

We are committed to providing [accessible customer service](#).

If you need accessible formats or communications supports, please [contact us](#).

Nous tenons à améliorer [l'accessibilité des services à la clientèle](#).

Si vous avez besoin de formats accessibles ou d'aide à la communication, veuillez [nous contacter](#).



Prospecting Report on the White Lake Property of Battery Mineral Resources Corp, Browning, Dufferin, Unwin, Stull, and Leask Townships, Northeastern Ontario.

March 9, 2021

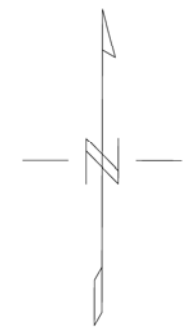
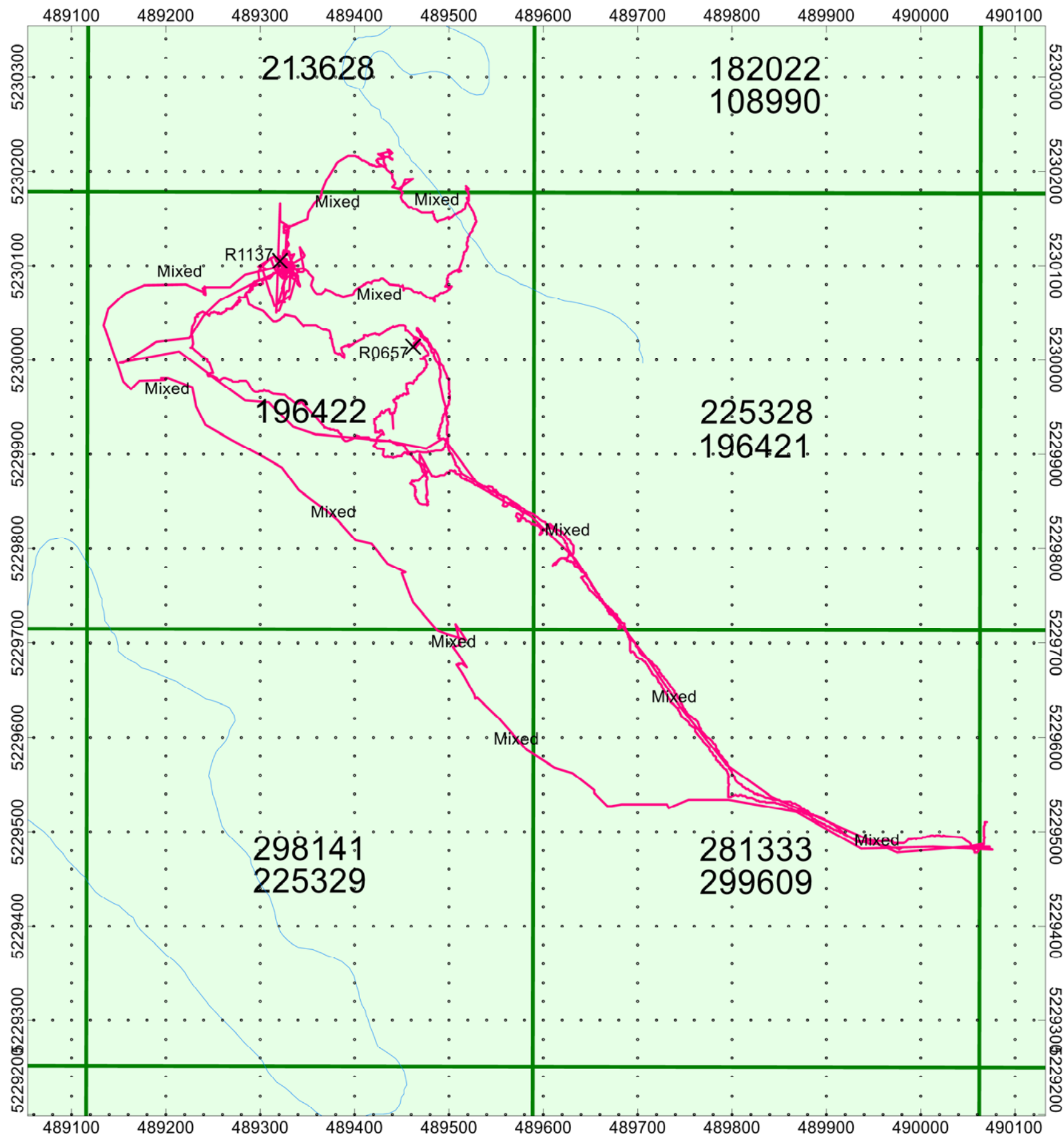
Prepared By:

Frank Ploeger, P.GEO  
Battery Mineral Resources Corp.  
&  
Peter Doyle, FAusIMM  
Battery Mineral Resources Corp.

With Contributions By:  
Andrew Salerno, B.Sc.

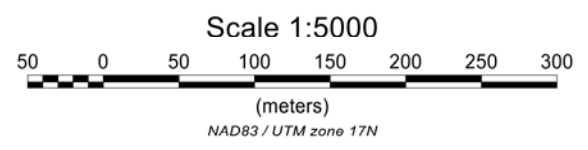
Prepared For:

Battery Mineral Resources Corp.  
P.O. Box 219, 14579 Government Road  
Larder Lake, Ontario, P0K 1L0 Canada



**BAT+ERY**  
**MINERAL RESOURCES**  
 White Lake Project - Major Leckie Shaft  
 Leask Township, Ontario

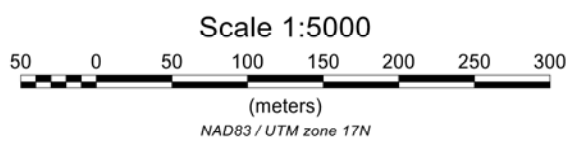
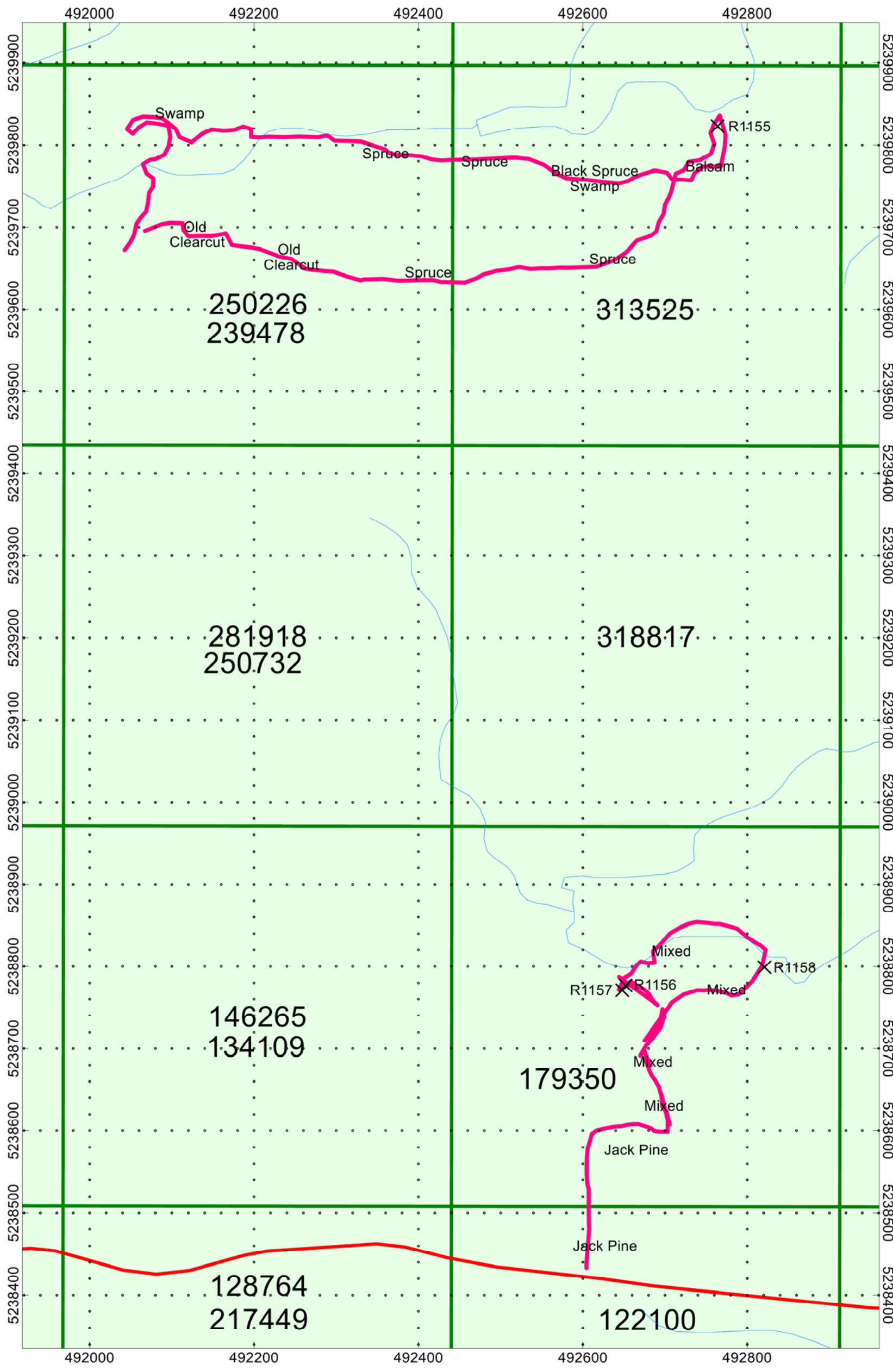
Prospecting Traverse  
 September 10, 2020



Map Drawn By: C Jason Ploeger, P.Geo  
 June 2021



Drawing: BMR-WhiteLake-MajorLeckie



# BATTERY

## MINERAL RESOURCES

**White Lake Project -White Lake and Saturday Lake  
Unwin Township, Ontario**

Prospecting Traverse  
September 11, 2020  
September 24, 2020

Map Drawn By: C Jason Ploeger, P.Geo  
June 2021



Drawing: BMR-WhiteLake-WhiteLake and Saturday

**TABLE OF CONTENTS**

**1.0 SURVEY OVERVIEW.....4**

1.1 Project Name .....4

1.2 Client.....4

1.3 Summary.....4

1.4 Activities Undertaken .....4

**2.0 SURVEY DETAILS.....5**

2.1 Location .....5

2.2 Access .....5

2.3 Mining Claims / Ownership.....6

2.4 Historic Work.....7

2.5 Regional and Local Geology .....8

2.6 Mineralization.....9

**3.0 PROSPECTING.....10**

3.1 Overview .....10

3.2 Plans & Permits.....10

3.3 Personnel.....10

3.4 Daily Log.....10

3.5 Traverses .....10

**4.0 RESULTS.....12**

4.1 Prospecting Results .....12

4.2 Sample Assay Results .....13

4.3 Summary and Recommendations .....14

**5.0 REFERENCES .....16**

**6.0 QUALIFICATIONS .....18**

**7.0 INSTRUMENT SPECIFICATIONS .....20**

**8.0 APPENDIX .....23**

**LIST OF APPENDICES**

- APPENDIX 1: MINING CLAIM CELLS LIST**  
**APPENDIX 2: ASSAY DATA AND CERTIFICATES OF ANALYSIS**

**LIST OF TABLES AND FIGURES**

**Figure 1: White Lake Property Location Map. .... 5**

**Figure 2: General Location and Access to the White Lake Property. .... 6**

**Figure 3: White Lake Claim Cells. .... 7**

---

<b>Figure 4:</b> Geology of the White Lake project area. (Ontario Geological Survey, 2003, portion of Map P.3531).....	9
<b>Figure 5:</b> Map displaying traverses completed during the 2020 prospecting of White Lake. ....	11
<b>Figure 6:</b> Detail showing traverses and sample locations from the 2020 prospecting of White Lake. ....	12
<b>Figure 7:</b> White Lake pit/shaft; Spectacular Co bloom on slip face (yellow arrow) and possible vertical 'feeder' slip/vein (dashed yellow line).....	14
<b>Table 1:</b> Summary of Work Undertaken.....	4
<b>Table 2:</b> Daily Log.....	10
<b>Table 3:</b> Sample coordinates and descriptions. ....	12
<b>Table 4:</b> Summary of assay results from the White Lake project. ....	13

**1.0 SURVEY OVERVIEW****1.1 PROJECT NAME**

This project is known as the **White Lake Project**.

**1.2 CLIENT**

BATTERY MINERAL RESOURCES CORP.

P.O. Box 219,  
14579 Government Road,  
Larder Lake, Ontario, P0K 1L0, Canada

**1.3 SUMMARY**

The Battery Mineral Resources' (BMR) White Lake project is comprised of 538 mining cell claims in Browning, Dufferin, Unwin, Stull and Leask townships, located 85 km north of Sudbury and 70 km southwest of Elk Lake, Ontario. In total, BMR holds 10,764.9 hectares of contiguous mining claims on the property.

Between September 10<sup>th</sup> and September 24<sup>th</sup>, 2020, BMR's field team comprised of Mercedes Rich, Andrew Salerno, Sean Hicks Ryan Wells and Stephan Trimmer, all of whom were contracted through Canadian Exploration Services (CXS), visited and prospected the White Lake project area. This was a follow up on the prospecting done in 2018 where geologists visited known mineral occurrences and AMIS features. Supervision was provided by BMR's Exploration Manager Frank Ploeger, and Vice President of Exploration Peter Doyle who also visited some sites.

The main objective of the work in 2020 was to investigate areas of geological interest for possible cobalt occurrences, ground truth geophysical features, verify the regional geological maps, and in general assess the viability of retaining such a large land package. A summary of work is provided in Table 1.

All coordinates presented in this report are in UTM NAD83 Z17N.

**1.4 ACTIVITIES UNDERTAKEN**

Activity	Dates	Details	Performed By
Prospecting	September , 2020	6 samples, 14.7 km traversed	CXS Geologists
Assaying	September , 2020	6 samples	ALS Minerals

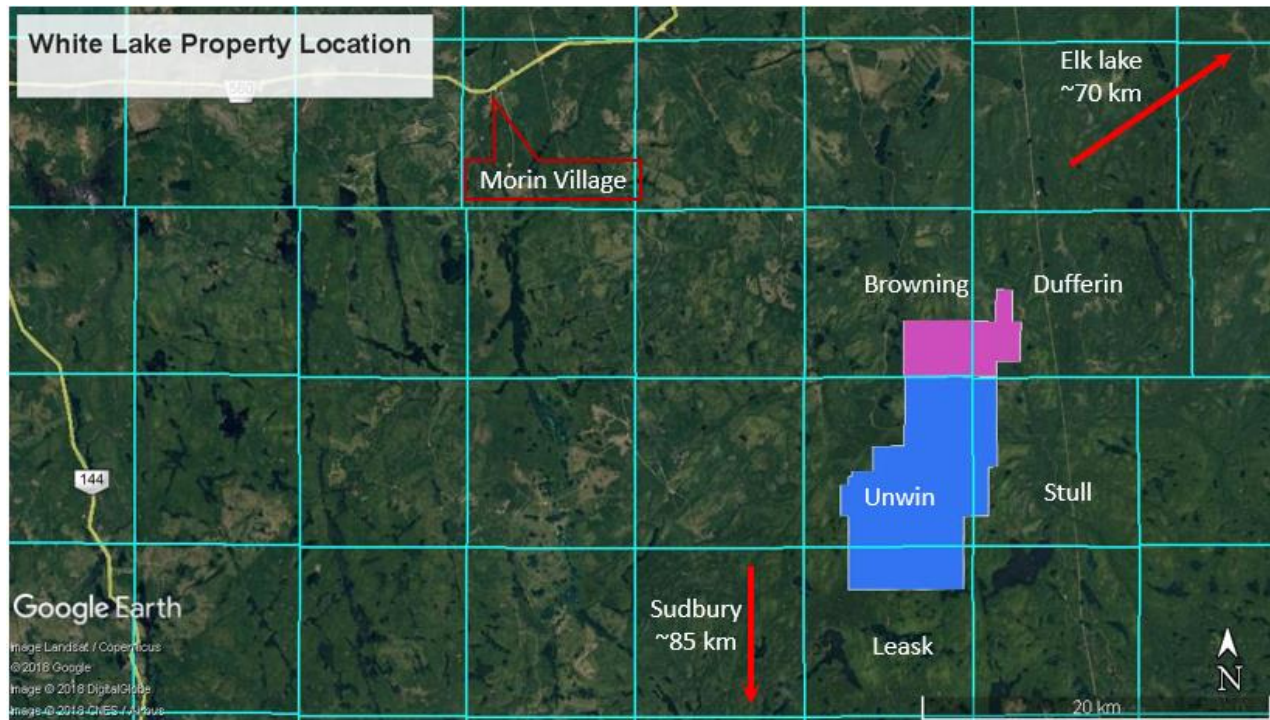
***Table 1: Summary of Work Undertaken.***



## 2.0 SURVEY DETAILS

### 2.1 LOCATION

The center of the White Lake project area is ~85 km north of Sudbury and 70 km southwest of Elk Lake, Ontario. It is located within Browning, Dufferin, Unwin, Stull, and Leask townships. Figure 1 shows the general location of the White Lake property.

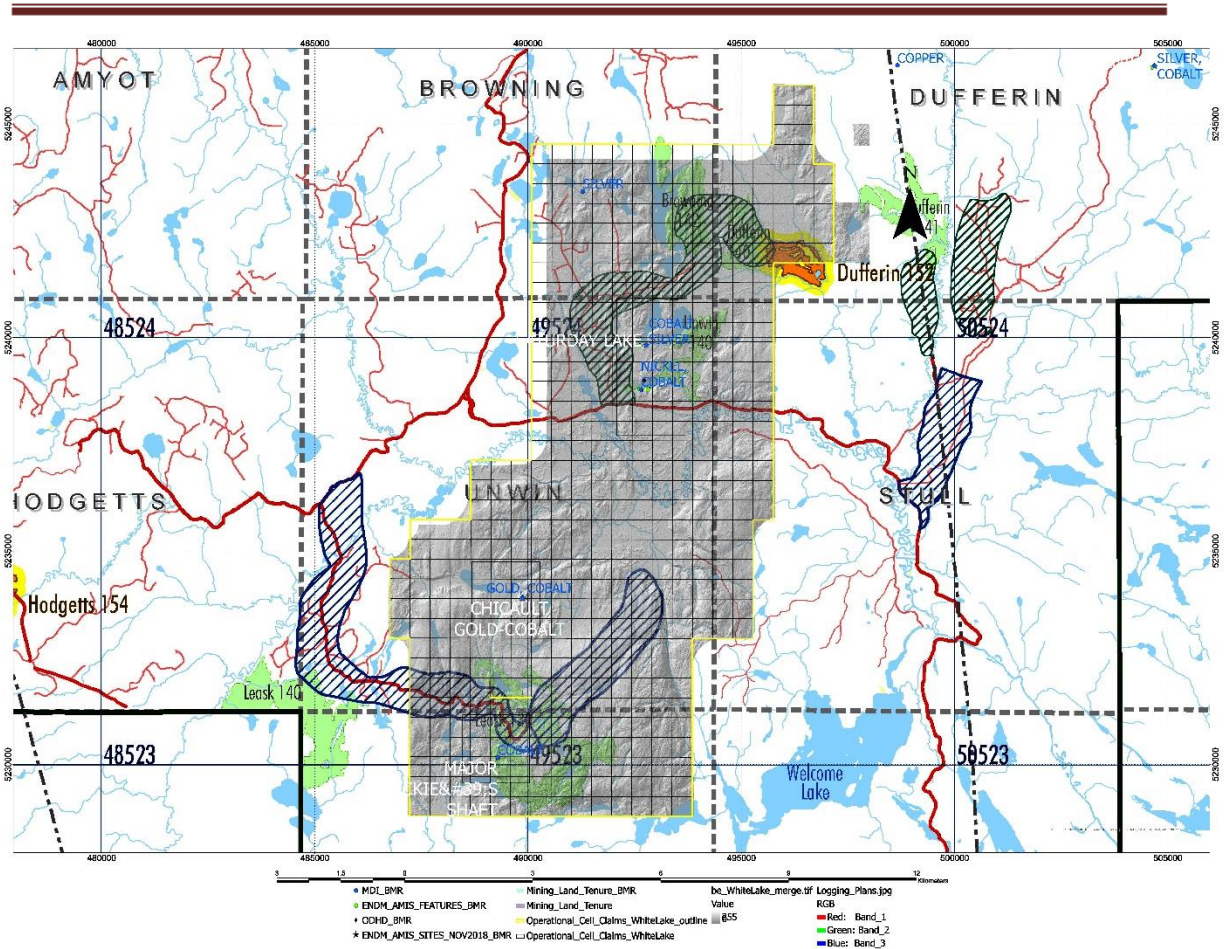


**Figure 1: White Lake Property Location Map.**

### 2.2 ACCESS

The White Lake property can be accessed by taking HWY 560 10 km west of Shining Tree to Sandy Lake Road, and then following Sandy Lake Road east for approximately 11.5 km to the main junction with Bay Lumber road and thence south to the 41 km marker. Further access off of the main road is provided by multiple bush roads and ATV trails. In Figure 2, the various roads and trails to access the White Lake project area are shown in red.



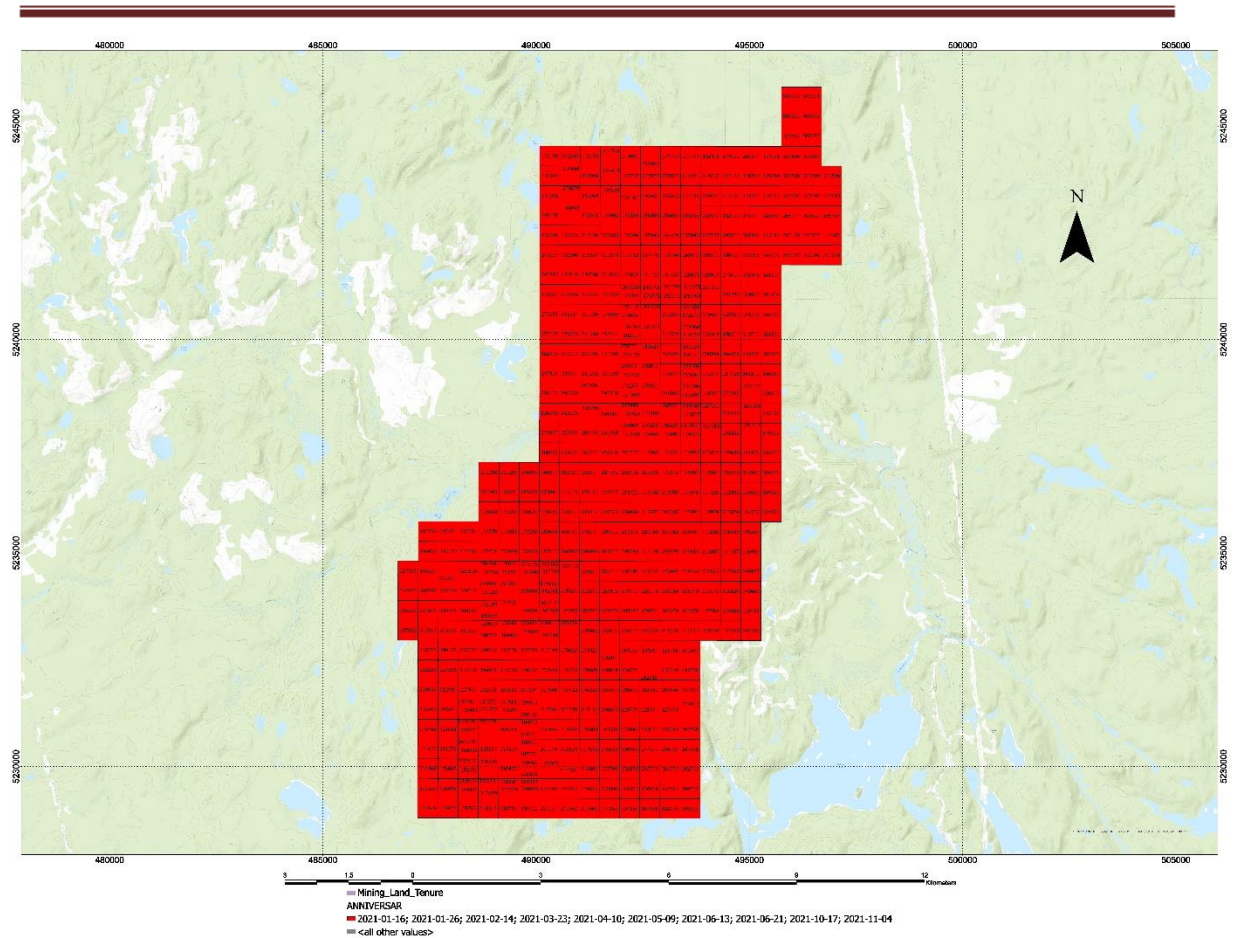


**Figure 2: General Location and Access to the White Lake Property.**

### 2.3 MINING CLAIMS / OWNERSHIP

The White Lake project is comprised of 538 contiguous mining cell claims, totaling 10,764.9 ha, in Browning, Dufferin, Unwin, Stull and Leask townships. Mineral rights on the White Lake property are held in two ways: a purchase agreement entered into with a prospector and claims staked and owned 100% by BMR.

Appendix 1 lists, and Figure 3 displays, the breakdown of the current claim tenure of Battery Mineral Resources on the White Lake property.



**Figure 3: White Lake Claim Cells.**

## 2.4 HISTORIC WORK

### ***1910 - Major Leckie Shaft***

The Major Leckie shaft is believed to have been sunk and operating around 1910, based on interviews with a prospector from Shining Tree, Ontario (now deceased), who was employed by Major J.A. Leckie in 1910 and worked on the shaft. The shaft followed a vein with massive cobalt sulphides, described as being 8-10 inches wide and persisting to depth, in hopes that it would also contain high silver grades, similar to the Cobalt Silver Camp. However, due to the presence of only trace amounts of silver and no market for cobalt, the project was abandoned (Elliot, 1984).

### ***Patino Mines***

In 1981 Patino Mines conducted basic prospect investigation and ground geophysics at the White Lake Prospect. The best sample from this survey was a 2-4" quartz vein, dipping 45°, which contained cobaltite and niccolite and pronounced cobalt and nickel bloom (secondary alteration). The sample collected assayed 7.16 % Co, 2 % Ni, and 0.05 oz/T Ag. Additionally, Patino mines conducted ground magnetics and EM-16 (Born, 1981).

---

**1984 – Elliott**

Elliott carried out a ground Self Potential and magnetic survey around the Major Leckie shaft area, interpreting that the anomalies reflect reported sulphide mineralization and extend NE and SW from the shaft. Chip samples were also collected, but no results were provided.

**Onitap Resources**

Onitap drilled two diamond drill holes (U84-1 and U84-2), the deeper of which appears to have intersected a quartz-carbonate vein with arsenopyrite or smaltite at 532 feet, but no assays were reported (Onitap, 1984): “At 532.5 - 532.7 at 700 to CA + 1% cpy + 1% arsenopyrite or smaltite”.

**Larry Salo – Land Lake/Chicault gold-cobalt (#21)**

In 2009 Larry Salo reported assessment work on this prospect that included a site visit, and sampling of cobalt bloom and visible galena, but no assays were reported (Salo, 2009).

**2018 - Battery Mineral Resources Ltd**

This report outlines the high-resolution helicopter-borne aeromagnetic and radiometric survey flown over the 2018 White lake survey blocks for Battery Mineral Resources Ltd. The survey was started on July 19, 2018 and finished on July 23, 2018 and covered an area of 91.0 km<sup>2</sup>.

**2018 - Battery Mineral Resources Ltd**

This report outlines the prospecting and lidar surveys that occurred in 2018. The lidar survey started and ended on June 12, 2018 with the survey area being 101.59 km<sup>2</sup>. The prospecting survey took place on July 4<sup>th</sup> to 6<sup>th</sup>, 2018 and September 30<sup>th</sup> to October 1<sup>st</sup>, 2018. With 12 samples being taken and assayed.

## 2.5 REGIONAL AND LOCAL GEOLOGY

### REGIONAL GEOLOGY

The White Lake project area occurs within the Superior Province, composed of northeast-trending Paleo- to Neoproterozoic gneissic complexes, granite-greenstone terranes, and sedimentary basins that were assembled by repeated island arc-microcontinent collisions (Bauer et al., 2011). The White Lake project is partially hosted in Paleoproterozoic (2.5-2.2 Ga) metasedimentary rocks of the Huronian Supergroup (HS) that form a ~60,000 km<sup>2</sup> irregular-shaped siliciclastic paleo-basin, colloquially known as the Cobalt Embayment (Potter and Taylor, 2009). The metasediments unconformably overly complexly folded and sub vertically dipping Neoproterozoic volcanic, intrusive, and sedimentary rocks of the Wawa-Abitibi terrane that forms the southernmost sub province of the Canadian portion of the Superior Province (Stott et al., 2010; Stott, 2011; Lodge, 2013). Throughout the region, both the Archean rocks and the HS have been intruded by Nipissing Diabase at approximately 2.219 Ga. These intrusions are primarily tholeiitic, sourced from MORB-type parental magmas, which took advantage of reactivated pre-HS faults (Corfu and Andrews, 1986; Potter and Taylor, 2009). The Nipissing diabase sills are considered the primary heat source that drove hydrothermal fluid circulation resulting in the significant Ag-Co mineralization that occurs throughout the Cobalt embayment.

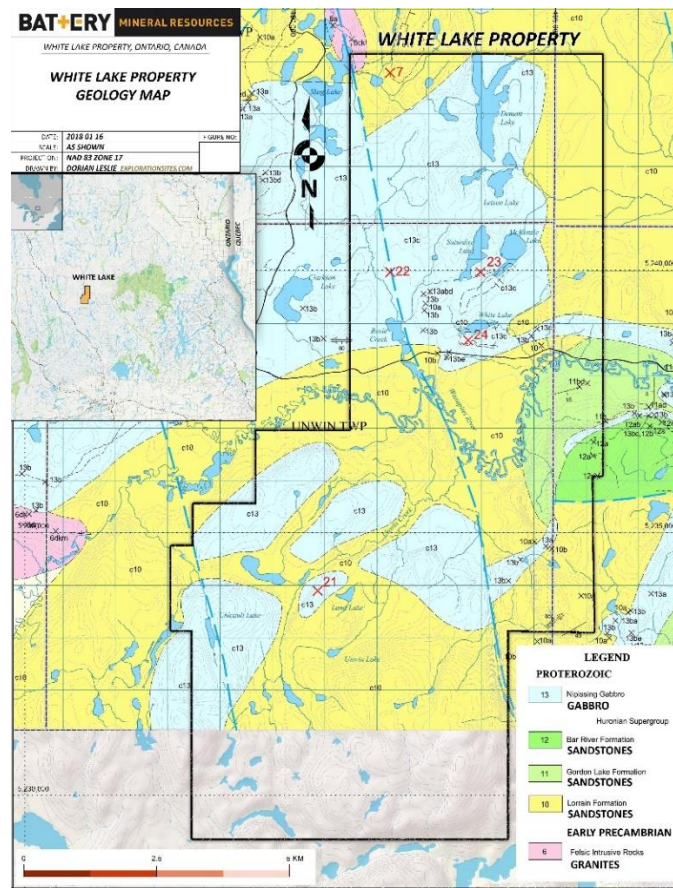


**PROPERTY GEOLOGY**

The White Lake project is predominantly underlain by Huronian group sediments of the Lorrain, Garden Lake and Bar River formations (including quartz arenite, feldspathic arenite, argillite and conglomerates), which are intruded by Nipissing diabase sills. The geology of the area is displayed in Figure 4 (after OGS, 2003).

**2.6 MINERALIZATION**

The cobalt mineralization occurs as smaltite and secondary alteration, cobalt and nickel blooms (erythrite and annabergite, respectively), primarily hosted in quartz-calcite fissure veins, within the Nipissing diabase intrusions.



**Figure 4: Geology of the White Lake project area.  
(Ontario Geological Survey, 2003, portion of Map P.3531).**

### 3.0 PROSPECTING

#### 3.1 OVERVIEW

During September of 2020, prospecting was completed at the White Lake property. The purpose of the mapping was to better understand the geological context of the area, define contact relationships between the sediments and diabase, as well as locate AMIS features which are generally centred on past developed zones of mineralization. Target areas generated by interpretation of available geophysical data (Weis, 2018; King, 2020) were also investigated. From the assessment files, it was noted that the area has seen very little exploration with most work targeting possible VMS mineralization beneath the Nipissing Diabase and the Huronian sediments in the Archean basement, or, barite veining in Proterozoic rocks.

A LiDAR survey was used as a tool for accurately locating some of the historic features and for plotting traverse tracks. Historically, the area had been explored mainly for silver, but the current work focussed on the exploration for cobalt. The information collected will be used to determine if the area provides the potential for locating a significant cobalt or silver deposit to justify the size of the land package.

#### 3.2 PLANS & PERMITS

The prospecting work reported was surficial and did not require any plans or permits.

#### 3.3 PERSONNEL

The prospecting crew consisted of BMR's field staff including: Andrew Salerno, Sean Hicks, Mercedes Rich, Stephan Trimmer and Ryan Wells, contracted through Canadian Exploration Services (CXS) of Larder Lake, Ontario. Exploration Manager Frank Ploeger and Vice President of Exploration Peter Doyle supervised the program and visited some sites to assist in prospecting and evaluation of site locations. The daily log is provided in Table 2.

#### 3.4 DAILY LOG

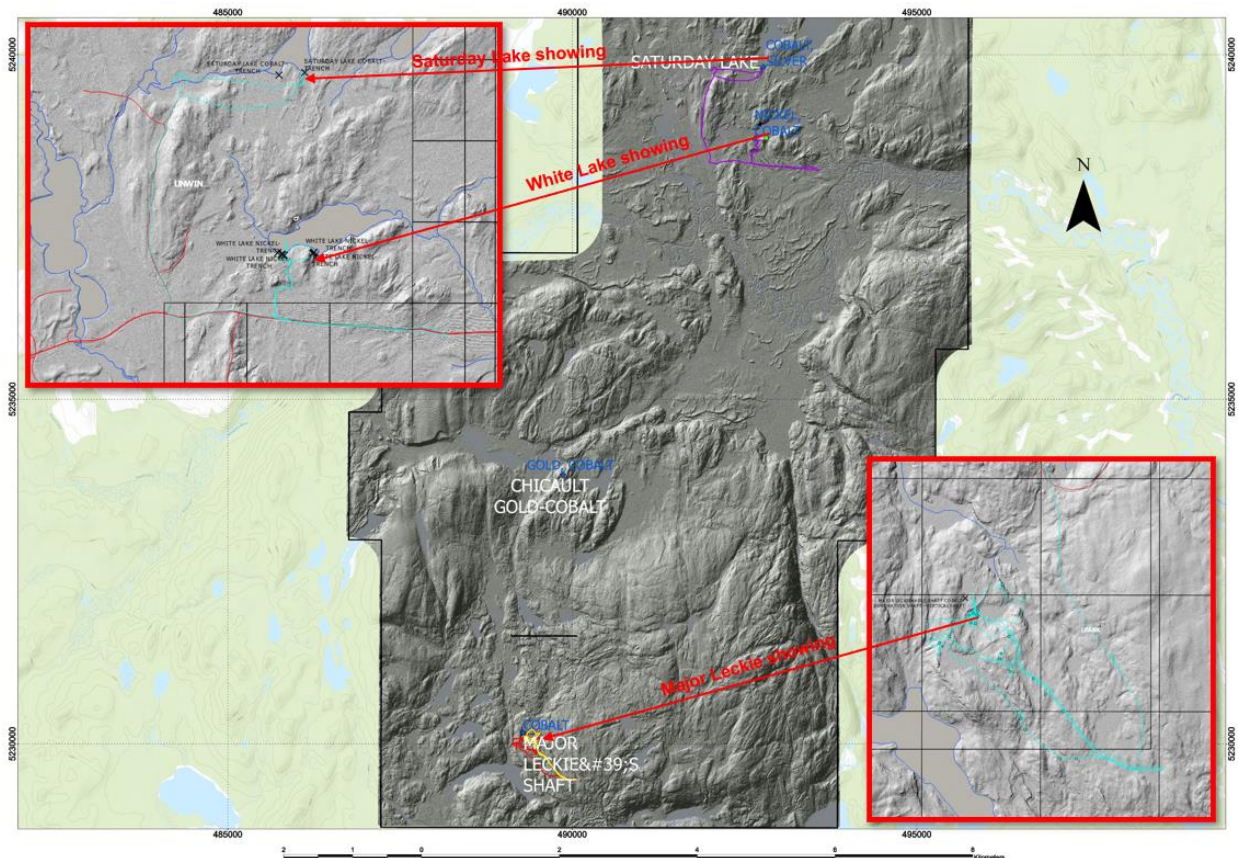
Date	Description	Samples Taken	Distance Traversed (km)
2020-09-10	Traversed and ground- truthed various LiDAR and AMIS features in Nipissing diabase around the Major Leckie AMIS site. One pit was found	2	8.6
2020-09-11	Traversed and ground- truthed various LiDAR AMIS features in Nipissing diabase around the Saturday Lake and White Lake AMIS sites.	4	2.6
2020-09-24	Return to the Major Leckie AMIS site following the clear cutting of the area to check new exposures. A shallow shaft and pit were found.	0	3.5

**Table 2: Daily Log.**

### 3.5 TRAVERSES

Prospecting work on the Elk Lake property involved traverses which focused on ground-truthing areas of interest derived from old reports, geology maps, geophysical interpretations and through examination of AMIS records and LiDAR tiles.

Traverse tracks were recorded using Garmin InReach GPS' and synced to the Garmin website using the InReach Sync software. Along with the traverses, the locations of samples taken, and any other points of interest were recorded using the Garmin and associated software. All the recorded information is illustrated in Figure 5.



**Figure 5: Map displaying traverses completed during the 2020 prospecting of White Lake.**



**4.0 RESULTS**

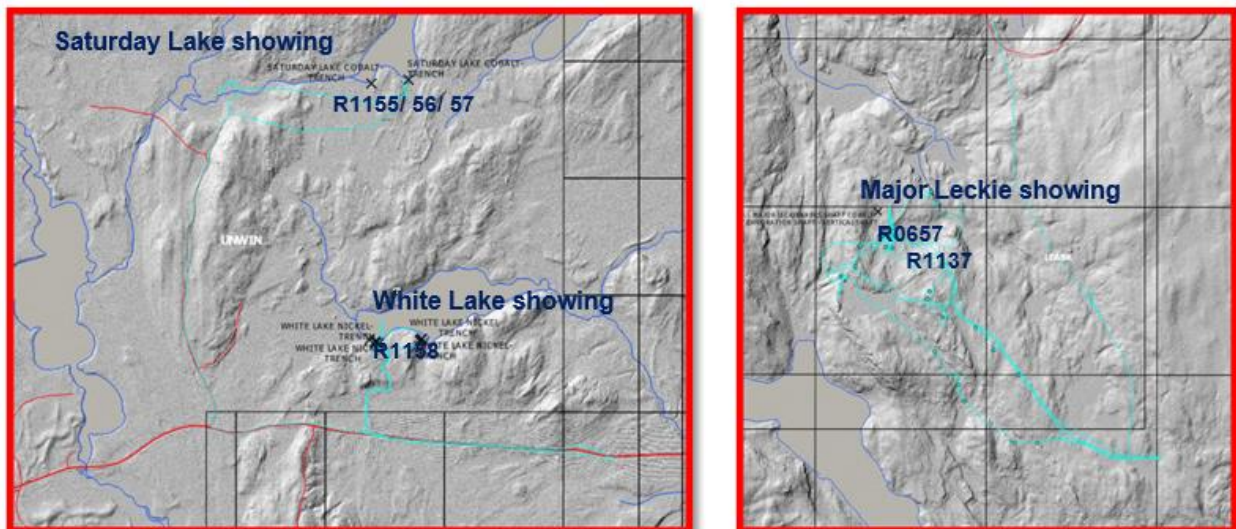
**4.1 PROSPECTING RESULTS**

During the prospecting of the White Lake project area, 6 grab samples, consisting mainly of vein material and containing cobalt bloom, were collected from rock dumps at pits and shafts and from outcrops surrounding the 2 highest priority targets, the White Lake- Saturday Lake, and the Major Leckie areas, both recommended in a re- interpretation of available geophysical data.

A small slab was cut from each sample at the CXS facility and retained as a reference specimen while the remainder was bagged and sent to ALS Minerals in Sudbury for analysis. The sample coordinates with brief field descriptions are detailed in Table 3; sample locations are displayed in Figure 6.

Sample	Easting	Northing	Rock Description
R0657	489462	5230014	fine grained, presumed to be volcanics, trace py
R1137	489321	5230105	Qtz-vein in Major Leckie muck pile with minor co-bloom and visible Ag along wall rock margins
R1155	492764	5239823	Saturday Lake showing- Muck pile for shaft
R1156	492652	5238777	Saturday Lake showing- Muck pile from main pit
R1157	492648	5238771	Saturday Lake showing- Quartz-carb vein Co near main pit
R1158	492821	5238799	White Lake showing- Muck pile from secondary pit

***Table 3: Sample coordinates and descriptions.***



***Figure 6: Detail showing traverses and sample locations from the 2020 prospecting of White Lake.***

## 4.2 SAMPLE ASSAY RESULTS

In total, 6 samples were submitted to ALS Minerals for multielement analysis. Table 4 summarizes the assay results for the main elements of interest, Co, Ag Cu, As, Ni and Au. Certificates of Analyses which detail the full assay results are attached as Appendix 2.

Sample ID	Cobalt (Co-ppm)	Silver (Ag-ppm)	Copper (Cu-ppm)	Arsenic (As-ppm)	Nickel (Ni-ppm)	Gold (Au-ppm)
R0657	54	0.08	80	11	53	0.002
R1137	3440	0.51	68	4590	196	0.094
R1155	40	0.18	49	50	8	<0.001
R1156	3520	1.21	46	7500	712	0.079
R1157	21400	1.47	61	41000	2150	0.199
R1158	80	0.60	886	135	57	0.061

***Table 4: Summary of assay results from the White Lake project.***

The best cobalt assays (3520 & 21400ppm Co) were obtained from the selected samples of vein material (R1156/ 57) from the muck piles of pits at the southwest end of Saturday Lake. They also returned anomalous Au (0.079 & 0.199ppm). Patino Mines sampled these historic pits extensively in 1981 where it was reported that:

“Here Cobalt-bloom occurs in a medium gabbro- diabase associated with minor syenite veinlets ( 2cm. thick) and along joint planes. However, no cobaltite is present and, therefore the assay values are low with 0.93 and 0.12% Co the best values.”

More extensive sampling of the host rocks surrounding the Saturday Lake showings was conducted by BMR in 2018 which returned only 1 slightly anomalous sample (1200ppm Co) of 6 collected.

The vein at the White Lake shaft/ pit consists of spectacular Co bloom in quartz- carbonate vein material exposed on a 45 degree sloped slip plane (Figure 7). Previous BMR sampling returned one sample with high Co, Ni and As values (all >10000ppm). During the current prospecting of the area, a pit approximately 180m of the main shaft was sampled which returned slightly anomalous gold (0.061ppm) and negligible Co and Ag.

The only other significant showing in the area, located approximately 9.5km SSW of White Lake (“as the crow flies”), is the Major Leckie shaft/ pit area. During the current visit, the entire area was crossed by a myriad of new logging roads which had obliterated the previous infrastructure but had uncovered new outcrop exposures which were noted. Sampling of the narrow vein material of the main pit/ shaft yielded a modest Co value of 3440ppm and slightly anomalous Au of 0.094ppm.



**Figure 7: White Lake pit/shaft; Spectacular Co bloom on slip face (yellow arrow) and possible vertical 'feeder' slip/vein (dashed yellow line).**

### 4.3 SUMMARY AND RECOMMENDATIONS

#### Summary

Between September 10<sup>th</sup> and September 24<sup>th</sup>, 2020, BMR geologists visited and prospected the White Lake project area. This was a follow up on the prospecting done by BMR in 2018 where known mineral occurrences and AMIS features were visited. The main objective of the 2020 work was to investigate areas of geological interest for possible cobalt occurrences, prospect over newly clear cut and geophysically targeted areas, verify the regional geological maps, and in general, assess the viability of retaining such a large land package.

A total of 6 samples, consisting mainly of vein material from rock dumps at pits and shafts, as well as samples from outcrops, were collected and submitted to ALS Minerals for multielement analysis.

As expected, the best cobalt assays were obtained from the selected samples of vein material from the muck piles of pits at the southwest end of Saturday Lake, the White Lake main pit/shaft, and the Major Leckie pit/shaft. From the mapping of outcrops surrounding these features, and investigation of new exposures in the clear cut areas, no new showings or areas of disseminated mineralization, were located.

#### Recommendations.

The White Lake project area covers an extensive claim package in which there are very few historic cobalt or silver occurrences noted. In reviewing the assessment files, it was revealed that there has been very little exploration work conducted in the area, with most work targeting possible VMS mineralization underneath the Nipissing Diabase and Huronian sediments in the

Archean basement, or, barite veining in Proterozoic rocks.

Prospecting and sampling of the various historic features, geophysical targets and newly exposed outcrops has not revealed any prospective areas for follow up. Perhaps of interest, are the syenitic- looking sections of the Nipissing diabase which may represent a late stage residual melt phase that may contain interstitial cobalt or other minerals. However, during the course of the prospecting, and historically, no such mineralization has been noted.

Therefore, it is recommended that:

- 1) no additional follow up work is recommended for the area around the White Lake or Saturday Lake showings;
- 2) no additional follow up work is recommended for the area around the Major Leckie showing;
- 3) The recommendations from the King (2020) and Weis (2018) interpretive geophysical reports be re- examined and some of the interpreted structural and alteration related targets be field checked.
- 4) as the Nipissing diabase sill and the immediate contact with the sediments is interpreted by the geophysicists as being of greatest interest as a host for potential Co-Ag mineralization, the remainder of the claim cells underlain by Huronian sediments only, be dropped.



---

---

**5.0 REFERENCES**

- Born, P., 1981, Patino Mines (Quebec) Limited, Geophysical Surveys, Annett Option - Unwin Township Property, September, 1981; Assessment Office, Report No. 41P06SE0020.
- Elliott, A., 1984, "Major Leckie's Shaft", Report on Magnetic & Sp. Surveys (cobalt-copper prospect), Leask Twp. Larder District, Ontario; Ontario Geology, Ministry of Northern Development and Mines, Assessment Report No. 41P03NE0011.
- King, A., 2020, White Lake Geophysical Review- for Battery Mineral Resources, 53 p.
- Onitap Resources Inc., 1984, Assessment Report, Geology Ontario Record No. 41P86SE0016; diamond drill logs by P Born.
- Ontario Geological Survey, 2003, Geological Map P.3531 Shining Tree South, Scale 1:50 000
- Salo, J., 2009, Report on Unwin Township South for Larry Salo.
- Weis, T., 2018, White Lake Geophysical Features Recommended for Ground Follow Up, 2018, E-mail Memorandum, for Battery Mineral Resources.

## Secondary References

- Andrews, A.J., Owsicki, L., Kerrich, R., and Strong, D.F., (1986a). The silver deposits at Cobalt and Gowganda, Ontario. I: Geology, petrography, and whole-rock geochemistry: Canadian Journal of Earth Sciences, v.23 (10), p. 1480-1506.
- Andrews, A.J., Masliwec, A., Morris, W.A., Owsicki, L., and York, D., (1986b). The silver deposits at Cobalt and Gowganda, Ontario. II: An experiment in age determinations employing radiometric and paleomagnetic measurements: Canadian Journal of Earth Sciences, v.23 (10), p. 1507-1518.
- Hanych, W. (1999). *Roy Lacarte Property, Geological Evaluation*. Tyrrell Township, Timiskaming District, Northeastern Ontario.
- Hitzman, M.W., Bookstrom, A. A., Slack, J. F., and Zientek, M. L. (2016). Cobalt—Styles of Deposits and the Search for Primary Deposits: USGS Open-File Report 2017–1155, 53 p.

Jambor, J.L. (1971). *The Nipissing Diabase*. *The Canadian Mineralogist*, 11(1):34-75.

Joyce, J.K. (n.d.). *The Cobalt-Gowganda Silver Mining Area*. Retrieved from [https://www.davidkjoyceminerals.com/pagefiles/articles\\_cobaltgowganda.asp](https://www.davidkjoyceminerals.com/pagefiles/articles_cobaltgowganda.asp).

Kerrich, R., Strong, D.F., Andrews, A.J., and Owsiacski, L., (1986). The silver deposits at Cobalt and Gowganda, Ontario. III: Hydrothermal regimes and source reservoirs—evidence from H, O, C, and Sr isotopes and fluid inclusions: *Canadian Journal of Earth Sciences*, v.23 (10), p. 1519-1550.

Lebrun, E., (2019). Gowganda Cobalt Exploration Project Site Visit. Internal Memo, SRK Consulting, p. 1-5.

Lindsey, D.A. (1969). *Glacial Sedimentology of the Precambrian Gowganda Formation, Ontario, Canada*. *GSA Bulletin*, 80 (9): p. 1685-1702.

Palmer, H. C.; Ernst, R. E.; Buchan, K. L. (2007). "Magnetic Fabric Studies of the Nipissing sill province and Senneterre dykes, Canadian shield, and Implications for Emplacement". *Canadian Journal of Earth Sciences. NRC Research Press* 44 (4): p. 507–528.

Siddom, James P. (1999). *Differential Uplift of the Archean Basement North of the Sudbury Basin: Petrographic Evidence from the Matachewan Dyke Swarm (submitted in conformity with the requirements for the degree of M.Sc. Graduate Department of Geology University of Toronto thesis)*.

Siemiatkowska, K.M. (1977). *Geology of the Wakomata Lake Area, District of Algoma*. Ontario Division of Mines: Geoscience Report 151.



**6.0 QUALIFICATIONS****CERTIFICATE OF QUALIFICATION AND CONSENT**

***I, Peter James Doyle of the city of Richmond Hill, Province of Ontario, do hereby certify:***

- 1) That I am an Exploration Geologist and reside at 79 Naughton Drive, Richmond Hill Ontario, L4C8B2.
- 2) That I graduated from Laurentian University at Sudbury, Ontario with an Honours Bachelor of Science degree in 1980.
- 3) That I am a **Fellow in good standing of the Australian Institute of Mining & Metallurgy (AUSIMM # 208850) as well as a member in good standing of Geological Association of Canada (GAC F0146); Canadian Institute of Mining & Metallurgy (CIMM # 91602); Prospectors & Developers Association of Canada (PDAC # 707); Society for Geology Applied to Mineral Deposits (SGA# 1333-08) and Society of Economic Geologists (SEG # 216720).**
- 4) That I have practiced my profession in various roles as a Mineral Exploration Geologist, Exploration Manager and Vice President of Exploration for a period of about 39 years principally within Canada & Australia as well as globally in United States of America, Mexico, Indonesia, China, Mongolia, Brazil, Argentina and Guyana.
- 5) This document is based on information various public documents and my personal observations during visits to the property during the exploration program.

*Although the information supplied to me is believed to be accurate and all reasonable care has been taken in the completion of this report, I hereby disclaim any and all liability arising out of its use and circulation. While I stand behind my interpretations, I cannot guarantee the accuracy of the source information and the use of this report or any part thereof shall be at the user's sole risk.*

6) I am currently employed full time as Exploration Manager – Canada for Battery Mineral Resources Limited and was directly involved in the planning and execution of the exploration program documented in this report.

7) *My written permission is required for the release of any summary or excerpt.*

---

Peter J. Doyle

Richmond Hill, Ontario, November 3, 2020

**CERTIFICATE OF QUALIFICATION AND CONSENT**

---

***I, Frank Rainer Ploeger of the town of Virginiatown, Province of Ontario, do hereby certify:***

- 1) That I am a Consulting Geologist and reside at 21 Waite Avenue, Virginiatown, Ontario, P0K 1X0.
- 2) That I graduated from Queen's University at Kingston, Ontario with a Bachelor of Applied Science degree in 1973; and, that I completed 2 years of an MSc program at McMaster University in Hamilton, Ontario (1980- 1982).
- 3) That I am a **member in good standing of the Association of Geoscientists of Ontario (#479), the Geological Association of Canada, the Prospectors and Developers Association, and the Northern Prospectors Association**. I have received a temporary permit (#2153) to practice in Quebec from the Ordre des geologues du Quebec pending acceptance by the Office Quebequois de la Langue Francaise (OQLF).
- 4) That I have practiced my profession as a mineral exploration and mine geologist for a period of about 45 years.
- 5) This document is based on information various public documents and my personal observations during several visits to the property.

*Although the information supplied to me is believed to be accurate and all reasonable care has been taken in the completion of this report, I hereby disclaim any and all liability arising out of its use and circulation. While I stand behind my interpretations, I cannot guarantee the accuracy of the source information and the use of this report or any part thereof shall be at the user's sole risk*

- 6) I have no interest, either directly or indirectly, in the subject property or client company.
- 7) *My written permission is required for the release of any summary or excerpt.*

---

Frank R. Ploeger

Virginiatown, Ontario, November 3, 2020

**7.0 INSTRUMENT SPECIFICATIONS**

**GARMIN INREACH EXPLORER+**



- *Specifications obtained from [www.garmin.com](http://www.garmin.com)*

<b>General</b>	
Physical dimensions	2.7" x 6.5" x 1.5" (6.8 x 16.4 x 3.8 cm) with keypad and SOS door bump
Display size	1.4"W x 1.9"H (3.5 x 4.7 cm); 2.31" diag (5.9 cm)
Display resolution	200 x 265 pixels
Display type	transflective color TFT
Weight	7.5 oz (213.0 g)
Battery	Rechargeable internal lithium ion
Battery life	Up to 100 hours at 10-minute tracking mode (default); up to 75 hours at 10-minute tracking with 1-second logging; up to 30 days at the 30-minute interval power save mode; and up to 3 years when powered off

<u>Water rating</u>	IPX7
Memory/History	2 GB
High-sensitivity receiver	
Interface	USB

<b>Maps &amp; Memory</b>	
Preloaded maps	yes. The North America SKU of the inReach Explorer+ comes preloaded with a 1:24k map of Garmin Yarmouth (Former DeLorme) North America data of the U.S. and Canada. Mexico also is included at a 1:125k scale (derived from Garmin Yarmouth's Digital Atlas of the Earth).
Ability to add maps	
Waypoints/favorites/locations	500
Routes	20

<b>Sensors</b>	
Barometric altimeter	
Compass	Yes (tilt-compensated 3-axis)

Outdoor Recreation Features	
Camera	no

Additional	
Additional	<ul style="list-style-type: none"> <li>• Wireless compatible: yes (Bluetooth®)</li> <li>• Trigger an interactive SOS with 24/7 search and rescue monitoring center: yes</li> <li>• Send and receive text messages to SMS and email: yes</li> <li>• Send and receive messages with other inReach users, exchange locations: yes</li> <li>• Track and share location with friends and family on web-based MapShare® portal: yes</li> <li>• Request weather forecasts for current location and planned destination: yes</li> <li>• Virtual keyboard for custom text messaging: yes</li> <li>• Send waypoints to MapShare portal during trip: yes</li> <li>• Send route selection to MapShare portal for friends and family to see progress: yes</li> </ul>

---

**8.0 APPENDIX**

**Appendix 1:** Mining Claim Cells List  
**Appendix 2:** Certificates of Analyses



Map Claim Reference Number	Tenure ID	Cell ID(s)	Tenure Type	Tenure Status	Anniversary Date	Due Date	Holder	Area (ha)	Township/Area	Work Required	Work Applied	Available Consultation Reserve	Available Exploration Reserve	Total Approved Reserve
1	107822	41P06B393	SCMC	Active	2021-01-26	2021-01-26	(100) BMR	21.92	UNWIN	\$ 400	\$ 800	\$ -	\$ 102	\$ 102
2	108394	41P06H384	SCMC	Active	2021-03-23	2021-03-23	(100) BMR	21.88	BROWNING	\$ 400	\$ 800	\$ -	\$ -	\$ -
3	112131	41P06H329	SCMC	Active	2021-03-23	2021-03-23	(100) BMR	21.88	BROWNING,DUFFERIN	\$ 400	\$ 800	\$ -	\$ -	\$ -
4	112132	41P06H369	SCMC	Active	2021-03-23	2021-03-23	(100) BMR	21.88	BROWNING,DUFFERIN	\$ 400	\$ 800	\$ -	\$ -	\$ -
5	115682	41P06H394	SCMC	Active	2021-06-13	2021-06-13	(100) BMR	21.88	DUFFERIN	\$ 400	\$ 800	\$ -	\$ 462	\$ 462
6	120253	41P03J096	BCMC	Active	2020-11-04	2020-11-04	(100) BMR	8.41	LEASK	\$ 200	\$ 400	\$ -	\$ 20	\$ 20
7	120254	41P03J117	SCMC	Active	2020-11-04	2020-11-04	(100) BMR	21.93	LEASK	\$ 400	\$ 800	\$ -	\$ 40	\$ 40
8	118904	41P06A184	BCMC	Active	2021-04-10	2021-04-10	(100) BMR	9.81	UNWIN	\$ 200	\$ 400	\$ -	\$ -	\$ -
9	118905	41P06A205	SCMC	Active	2021-04-10	2021-04-10	(100) BMR	21.90	UNWIN	\$ 400	\$ 800	\$ -	\$ -	\$ -
10	121981	41P06A228	SCMC	Active	2021-04-10	2021-04-10	(100) BMR	21.90	UNWIN	\$ 400	\$ 800	\$ -	\$ -	\$ -
11	121982	41P06A249	SCMC	Active	2021-04-10	2021-04-10	(100) BMR	21.90	STULL,UNWIN	\$ 400	\$ 800	\$ -	\$ -	\$ -
12	121980	41P06A230	SCMC	Active	2021-04-10	2021-04-10	(100) BMR	21.90	STULL	\$ 400	\$ 800	\$ -	\$ -	\$ -
13	122025	41P03J140	SCMC	Active	2021-01-16	2021-01-16	(100) BMR	21.93	LEASK	\$ 400	\$ 800	\$ -	\$ 40	\$ 40
14	121196	41P06A321	SCMC	Active	2021-04-10	2021-04-10	(100) BMR	21.91	UNWIN	\$ 400	\$ 800	\$ -	\$ -	\$ -
15	122055	41P06B319	SCMC	Active	2021-01-26	2021-01-26	(100) BMR	21.91	UNWIN	\$ 400	\$ 800	\$ -	\$ 40	\$ 40
16	122799	41P03J123	SCMC	Active	2021-02-14	2021-02-14	(100) BMR	21.93	LEASK	\$ 400	\$ 800	\$ -	\$ -	\$ -
17	122099	41P06A147	BCMC	Active	2020-11-04	2020-11-04	(100) BMR	13.89	UNWIN	\$ 200	\$ 400	\$ -	\$ 20	\$ 20
18	122100	41P06A165	SCMC	Active	2021-06-21	2021-06-21	(100) BMR	21.90	UNWIN	\$ 400	\$ 800	\$ -	\$ -	\$ -
19	123877	41P06A167	BCMC	Active	2021-03-23	2021-03-23	(100) BMR	7.99	UNWIN	\$ 200	\$ 400	\$ -	\$ -	\$ -
20	123361	41P03I006	SCMC	Active	2021-02-14	2021-02-14	(100) BMR	21.92	UNWIN	\$ 400	\$ 800	\$ -	\$ -	\$ -
21	123271	41P06A342	SCMC	Active	2021-04-10	2021-04-10	(100) BMR	21.91	UNWIN	\$ 400	\$ 800	\$ -	\$ -	\$ -
22	127378	41P03I066	SCMC	Active	2021-02-14	2021-02-14	(100) BMR	21.92	LEASK,UNWIN	\$ 400	\$ 800	\$ -	\$ -	\$ -
23	128715	41P06A325	SCMC	Active	2021-05-09	2021-05-09	(100) BMR	21.91	UNWIN	\$ 400	\$ 800	\$ -	\$ 40	\$ 40
24	131744	41P06A006	SCMC	Active	2021-03-23	2021-03-23	(100) BMR	21.88	BROWNING	\$ 400	\$ 800	\$ -	\$ -	\$ -
25	131623	41P03J078	BCMC	Active	2020-11-04	2020-11-04	(100) BMR	2.85	LEASK,UNWIN	\$ 200	\$ 400	\$ -	\$ 20	\$ 20
26	134109	41P06A144	BCMC	Active	2021-06-21	2021-06-21	(100) BMR	16.47	UNWIN	\$ 200	\$ 400	\$ -	\$ -	\$ -
27	133551	41P03J157	BCMC	Active	2021-01-16	2021-01-16	(100) BMR	14.75	LEASK	\$ 200	\$ 400	\$ -	\$ 20	\$ 20
28	133426	41P03I002	SCMC	Active	2021-01-16	2021-01-16	(100) BMR	21.92	UNWIN	\$ 400	\$ 800	\$ -	\$ 40	\$ 40
29	131398	41P06A044	BCMC	Active	2021-03-23	2021-03-23	(100) BMR	18.24	BROWNING,UNWIN	\$ 200	\$ 400	\$ -	\$ -	\$ -
30	132495	41P06H302	SCMC	Active	2021-02-14	2021-02-14	(100) BMR	21.88	BROWNING	\$ 400	\$ 600	\$ -	\$ -	\$ -
31	132496	41P06G320	SCMC	Active	2021-02-14	2021-02-14	(100) BMR	21.88	BROWNING	\$ 400	\$ 600	\$ -	\$ -	\$ -
32	132497	41P06G340	SCMC	Active	2021-02-14	2021-02-14	(100) BMR	21.88	BROWNING	\$ 400	\$ 600	\$ -	\$ -	\$ -
33	134815	41P03I142	SCMC	Active	2021-01-16	2021-01-16	(100) BMR	21.93	LEASK	\$ 400	\$ 800	\$ -	\$ 40	\$ 40
34	136874	41P03I124	SCMC	Active	2021-02-14	2021-02-14	(100) BMR	21.93	LEASK	\$ 400	\$ 800	\$ -	\$ -	\$ -
35	142283	41P06B357	BCMC	Active	2021-01-26	2021-01-26	(100) BMR	1.38	UNWIN	\$ 200	\$ 400	\$ -	\$ 20	\$ 20
36	143539	41P03I083	SCMC	Active	2021-02-14	2021-02-14	(100) BMR	21.92	LEASK	\$ 400	\$ 800	\$ -	\$ -	\$ -
37	142891	41P03I146	SCMC	Active	2021-02-14	2021-02-14	(100) BMR	21.93	LEASK	\$ 400	\$ 800	\$ -	\$ -	\$ -
38	146265	41P06A144	BCMC	Active	2021-02-14	2021-02-14	(100) BMR	5.43	UNWIN	\$ 200	\$ 400	\$ -	\$ 30	\$ 30
39	147416	41P06B140	SCMC	Active	2021-02-14	2021-02-14	(100) BMR	21.89	UNWIN	\$ 400	\$ 400	\$ -	\$ 82	\$ 82
40	149460	41P06B314	SCMC	Active	2021-01-26	2021-01-26	(100) BMR	21.91	UNWIN	\$ 400	\$ 800	\$ -	\$ 103	\$ 103

41	149520	41P06B279	SCMC	Active	2021-01-26	2021-01-26	(100) BMR	21.91	UNWIN	\$ 400	\$ 800	\$ -	\$ 40	\$ 40
42	149090	41P06H304	SCMC	Active	2021-03-23	2021-03-23	(100) BMR	21.88	BROWNING	\$ 400	\$ 600	\$ -	\$ -	\$ -
43	149091	41P06G360	SCMC	Active	2021-02-14	2021-02-14	(100) BMR	21.88	BROWNING	\$ 400	\$ 600	\$ -	\$ 102	\$ 102
44	149093	41P06H361	SCMC	Active	2021-02-14	2021-02-14	(100) BMR	21.88	BROWNING	\$ 400	\$ 800	\$ -	\$ -	\$ -
45	151766	41P06A170	SCMC	Active	2021-03-23	2021-03-23	(100) BMR	21.90	STULL	\$ 400	\$ 800	\$ -	\$ -	\$ -
46	150817	41P06A387	SCMC	Active	2021-05-09	2021-05-09	(100) BMR	21.92	UNWIN	\$ 400	\$ 800	\$ -	\$ 103	\$ 103
47	156093	41P06H366	SCMC	Active	2021-03-23	2021-03-23	(100) BMR	21.88	BROWNING	\$ 400	\$ 800	\$ -	\$ -	\$ -
48	159853	41P06H351	SCMC	Active	2021-03-23	2021-03-23	(100) BMR	21.88	DUFFERIN	\$ 400	\$ 800	\$ -	\$ 23	\$ 23
49	160973	41P06A207	SCMC	Active	2021-04-10	2021-04-10	(100) BMR	21.90	UNWIN	\$ 400	\$ 800	\$ -	\$ -	\$ -
50	161965	41P06A111	SCMC	Active	2021-03-23	2021-03-23	(100) BMR	21.89	STULL	\$ 400	\$ 800	\$ -	\$ -	\$ -
51	164490	41P06B398	BCMC	Active	2021-01-16	2021-01-16	(100) BMR	8.75	UNWIN	\$ 200	\$ 400	\$ -	\$ 20	\$ 20
52	161964	41P06A051	SCMC	Active	2021-03-23	2021-03-23	(100) BMR	21.89	DUFFERIN,STULL	\$ 400	\$ 800	\$ -	\$ -	\$ -
53	165759	41P06A281	SCMC	Active	2021-04-10	2021-04-10	(100) BMR	21.91	UNWIN	\$ 400	\$ 800	\$ -	\$ -	\$ -
54	166606	41P06A166	SCMC	Active	2020-11-04	2020-11-04	(100) BMR	21.90	UNWIN	\$ 400	\$ 800	\$ -	\$ 40	\$ 40
55	164626	41P03J114	SCMC	Active	2021-01-16	2021-01-16	(100) BMR	21.93	LEASK	\$ 400	\$ 800	\$ -	\$ 40	\$ 40
56	165761	41P06A322	SCMC	Active	2021-04-10	2021-04-10	(100) BMR	21.91	UNWIN	\$ 400	\$ 800	\$ -	\$ -	\$ -
57	168363	41P06A131	SCMC	Active	2021-03-23	2021-03-23	(100) BMR	21.89	STULL	\$ 400	\$ 800	\$ -	\$ -	\$ -
58	168386	41P06A148	SCMC	Active	2021-03-23	2021-03-23	(100) BMR	21.90	UNWIN	\$ 400	\$ 800	\$ -	\$ -	\$ -
59	167019	41P06A188	SCMC	Active	2021-04-10	2021-04-10	(100) BMR	21.90	UNWIN	\$ 400	\$ 800	\$ -	\$ -	\$ -
60	169718	41P06A203	SCMC	Active	2021-04-10	2021-04-10	(100) BMR	21.90	UNWIN	\$ 400	\$ 800	\$ -	\$ -	\$ -
61	172872	41P06A067	BCMC	Active	2021-10-17	2021-10-17	(100) BMR	13.79	UNWIN	\$ 200	\$ 400	\$ -	\$ -	\$ -
62	175564	41P06A368	SCMC	Active	2021-05-09	2021-05-09	(100) BMR	21.91	UNWIN	\$ 400	\$ 800	\$ -	\$ 103	\$ 103
63	174027	41P06B338	BCMC	Active	2020-11-04	2020-11-04	(100) BMR	18.64	UNWIN	\$ 200	\$ 400	\$ -	\$ 20	\$ 20
64	174331	41P06H311	SCMC	Active	2021-03-23	2021-03-23	(100) BMR	21.88	DUFFERIN	\$ 400	\$ 600	\$ -	\$ -	\$ -
65	174333	41P06H350	SCMC	Active	2021-03-23	2021-03-23	(100) BMR	21.88	DUFFERIN	\$ 400	\$ 800	\$ -	\$ -	\$ -
66	176656	41P06A041	SCMC	Active	2021-02-14	2021-02-14	(100) BMR	21.89	BROWNING,UNWIN	\$ 400	\$ 800	\$ -	\$ -	\$ -
67	176660	41P06B100	SCMC	Active	2021-02-14	2021-02-14	(100) BMR	21.89	UNWIN	\$ 400	\$ 600	\$ -	\$ 102	\$ 102
68	179297	41P06B278	SCMC	Active	2021-01-26	2021-01-26	(100) BMR	21.91	UNWIN	\$ 400	\$ 800	\$ -	\$ 40	\$ 40
69	179185	41P06B280	SCMC	Active	2021-04-10	2021-04-10	(100) BMR	21.91	UNWIN	\$ 400	\$ 800	\$ -	\$ -	\$ -
70	181214	41P06B380	BCMC	Active	2021-04-10	2021-04-10	(100) BMR	12.42	UNWIN	\$ 200	\$ 400	\$ -	\$ -	\$ -
71	178679	41P03J096	BCMC	Active	2021-01-16	2021-01-16	(100) BMR	13.52	LEASK	\$ 200	\$ 400	\$ -	\$ 20	\$ 20
72	178689	41P03J022	SCMC	Active	2021-01-16	2021-01-16	(100) BMR	21.92	UNWIN	\$ 400	\$ 800	\$ -	\$ 40	\$ 40
73	182022	41P03J119	BCMC	Active	2021-01-16	2021-01-16	(100) BMR	1.62	LEASK	\$ 200	\$ 400	\$ -	\$ 20	\$ 20
74	185216	41P06B320	SCMC	Active	2021-04-10	2021-04-10	(100) BMR	21.91	UNWIN	\$ 400	\$ 800	\$ -	\$ -	\$ -
75	184810	41P06B399	BCMC	Active	2021-01-16	2021-01-16	(100) BMR	8.74	UNWIN	\$ 200	\$ 400	\$ -	\$ 20	\$ 20
76	184812	41P03J039	SCMC	Active	2021-01-16	2021-01-16	(100) BMR	21.92	UNWIN	\$ 400	\$ 800	\$ -	\$ 40	\$ 40
77	184814	41P03J078	BCMC	Active	2021-01-16	2021-01-16	(100) BMR	19.04	LEASK,UNWIN	\$ 200	\$ 400	\$ -	\$ 20	\$ 20
78	183399	41P06A123	SCMC	Active	2021-02-14	2021-02-14	(100) BMR	21.89	UNWIN	\$ 400	\$ 800	\$ -	\$ 40	\$ 40
79	184426	41P06A025	SCMC	Active	2021-03-23	2021-03-23	(100) BMR	21.89	BROWNING	\$ 400	\$ 800	\$ -	\$ -	\$ -
80	185182	41P06H343	SCMC	Active	2021-02-14	2021-02-14	(100) BMR	21.88	BROWNING	\$ 400	\$ 800	\$ -	\$ 103	\$ 103
81	185183	41P06H364	SCMC	Active	2021-03-23	2021-03-23	(100) BMR	21.88	BROWNING	\$ 400	\$ 800	\$ -	\$ -	\$ -
82	185525	41P06B315	SCMC	Active	2021-01-26	2021-01-26	(100) BMR	21.91	UNWIN	\$ 400	\$ 800	\$ -	\$ 103	\$ 103
83	185526	41P06B336	SCMC	Active	2021-01-26	2021-01-26	(100) BMR	21.91	UNWIN	\$ 400	\$ 800	\$ -	\$ 103	\$ 103
84	186671	41P06A206	SCMC	Active	2021-04-10	2021-04-10	(100) BMR	21.90	UNWIN	\$ 400	\$ 800	\$ -	\$ -	\$ -
85	185991	41P06A227	SCMC	Active	2021-04-10	2021-04-10	(100) BMR	21.90	UNWIN	\$ 400	\$ 800	\$ -	\$ -	\$ -
86	185461	41P03J075	SCMC	Active	2021-01-16	2021-01-16	(100) BMR	21.92	LEASK,UNWIN	\$ 400	\$ 800	\$ -	\$ 40	\$ 40
87	185479	41P03J043	SCMC	Active	2021-02-14	2021-02-14	(100) BMR	21.92	UNWIN	\$ 400	\$ 800	\$ -	\$ 103	\$ 103

88	186049	41P03J174	SCMC	Active	2021-01-16	2021-01-16	(100) BMR	21.93	LEASK	\$ 400	\$ 800	\$ -	\$ 40	\$ 40
89	188697	41P06B220	SCMC	Active	2021-04-10	2021-04-10	(100) BMR	21.90	UNWIN	\$ 400	\$ 400	\$ -	\$ -	\$ -
90	188749	41P06B354	SCMC	Active	2021-01-26	2021-01-26	(100) BMR	21.91	UNWIN	\$ 400	\$ 800	\$ -	\$ 103	\$ 103
91	190825	41P06H381	SCMC	Active	2021-02-14	2021-02-14	(100) BMR	21.88	BROWNING	\$ 400	\$ 800	\$ -	\$ -	\$ -
92	190826	41P06A024	SCMC	Active	2021-03-23	2021-03-23	(100) BMR	21.89	BROWNING	\$ 400	\$ 800	\$ -	\$ -	\$ -
93	190199	41P03J015	SCMC	Active	2021-01-16	2021-01-16	(100) BMR	21.92	UNWIN	\$ 400	\$ 800	\$ -	\$ 40	\$ 40
94	193862	41P06H367	SCMC	Active	2021-03-23	2021-03-23	(100) BMR	21.88	BROWNING	\$ 400	\$ 800	\$ -	\$ -	\$ -
95	193863	41P06H389	SCMC	Active	2021-03-23	2021-03-23	(100) BMR	21.88	BROWNING,DUFFERIN	\$ 400	\$ 800	\$ -	\$ -	\$ -
96	194357	41P06A309	SCMC	Active	2021-05-09	2021-05-09	(100) BMR	21.91	STULL,UNWIN	\$ 400	\$ 800	\$ -	\$ 103	\$ 103
97	193528	41P06A389	SCMC	Active	2021-05-09	2021-05-09	(100) BMR	21.92	STULL,UNWIN	\$ 400	\$ 800	\$ -	\$ 103	\$ 103
98	192820	41P06A288	SCMC	Active	2021-05-09	2021-05-09	(100) BMR	21.91	UNWIN	\$ 400	\$ 800	\$ -	\$ 103	\$ 103
99	196506	41P06A089	SCMC	Active	2021-03-23	2021-03-23	(100) BMR	21.89	STULL,UNWIN	\$ 400	\$ 800	\$ -	\$ -	\$ -
100	198598	41P06A009	SCMC	Active	2021-03-23	2021-03-23	(100) BMR	21.88	BROWNING,DUFFERIN	\$ 400	\$ 800	\$ -	\$ -	\$ -
101	198599	41P06A008	SCMC	Active	2021-03-23	2021-03-23	(100) BMR	21.88	BROWNING	\$ 400	\$ 800	\$ -	\$ -	\$ -
102	202290	41P06B237	SCMC	Active	2021-01-26	2021-01-26	(100) BMR	21.90	UNWIN	\$ 400	\$ 400	\$ -	\$ 82	\$ 82
103	200128	41P06H392	SCMC	Active	2021-06-13	2021-06-13	(100) BMR	21.88	DUFFERIN	\$ 400	\$ 800	\$ -	\$ 423	\$ 423
104	199556	41P03I027	SCMC	Active	2021-02-14	2021-02-14	(100) BMR	21.92	UNWIN	\$ 400	\$ 800	\$ -	\$ -	\$ -
105	199557	41P03I047	SCMC	Active	2021-02-14	2021-02-14	(100) BMR	21.92	UNWIN	\$ 400	\$ 800	\$ -	\$ -	\$ -
106	202974	41P06A003	SCMC	Active	2021-02-14	2021-02-14	(100) BMR	21.88	BROWNING	\$ 400	\$ 800	\$ -	\$ -	\$ -
107	201539	41P03I126	SCMC	Active	2021-02-14	2021-02-14	(100) BMR	21.93	LEASK	\$ 400	\$ 800	\$ -	\$ -	\$ -
108	202937	41P06A066	SCMC	Active	2021-10-17	2021-10-17	(100) BMR	21.89	UNWIN	\$ 400	\$ 800	\$ -	\$ -	\$ -
109	204688	41P06H321	SCMC	Active	2021-02-14	2021-02-14	(100) BMR	21.88	BROWNING	\$ 400	\$ 800	\$ -	\$ -	\$ -
110	208161	41P06A012	SCMC	Active	2021-06-13	2021-06-13	(100) BMR	21.88	DUFFERIN	\$ 400	\$ 800	\$ -	\$ 423	\$ 423
111	211693	41P06A284	SCMC	Active	2021-05-09	2021-05-09	(100) BMR	21.91	UNWIN	\$ 400	\$ 800	\$ -	\$ 40	\$ 40
112	214538	41P06A110	SCMC	Active	2021-03-23	2021-03-23	(100) BMR	21.89	STULL	\$ 400	\$ 800	\$ -	\$ -	\$ -
113	213628	41P03J118	SCMC	Active	2020-11-04	2020-11-04	(100) BMR	21.93	LEASK	\$ 400	\$ 800	\$ -	\$ 40	\$ 40
114	213629	41P03J156	BCMC	Active	2020-11-04	2020-11-04	(100) BMR	2.73	LEASK	\$ 200	\$ 400	\$ -	\$ 20	\$ 20
115	216001	41P03I122	SCMC	Active	2021-01-16	2021-01-16	(100) BMR	21.93	LEASK	\$ 400	\$ 800	\$ -	\$ 40	\$ 40
116	217182	41P06A150	SCMC	Active	2021-03-23	2021-03-23	(100) BMR	21.90	STULL	\$ 400	\$ 800	\$ -	\$ -	\$ -
117	217183	41P06A168	SCMC	Active	2021-03-23	2021-03-23	(100) BMR	21.90	UNWIN	\$ 400	\$ 800	\$ -	\$ -	\$ -
118	217449	41P06A164	BCMC	Active	2020-11-04	2020-11-04	(100) BMR	16.44	UNWIN	\$ 200	\$ 400	\$ -	\$ 20	\$ 20
119	217450	41P06A187	BCMC	Active	2020-11-04	2020-11-04	(100) BMR	10.21	UNWIN	\$ 200	\$ 400	\$ -	\$ 230	\$ 230
120	216028	41P06A386	SCMC	Active	2021-05-09	2021-05-09	(100) BMR	21.92	UNWIN	\$ 400	\$ 800	\$ -	\$ 103	\$ 103
121	216029	41P06A384	SCMC	Active	2021-05-09	2021-05-09	(100) BMR	21.92	UNWIN	\$ 400	\$ 800	\$ -	\$ 103	\$ 103
122	218533	41P06A201	SCMC	Active	2021-04-10	2021-04-10	(100) BMR	21.90	UNWIN	\$ 400	\$ 800	\$ -	\$ -	\$ -
123	218534	41P06A222	SCMC	Active	2021-04-10	2021-04-10	(100) BMR	21.90	UNWIN	\$ 400	\$ 800	\$ -	\$ -	\$ -
124	218535	41P06A243	SCMC	Active	2021-04-10	2021-04-10	(100) BMR	21.90	UNWIN	\$ 400	\$ 800	\$ -	\$ -	\$ -
125	219422	41P03I081	SCMC	Active	2021-01-16	2021-01-16	(100) BMR	21.92	LEASK	\$ 400	\$ 800	\$ -	\$ 40	\$ 40
126	225201	41P03I003	SCMC	Active	2021-02-14	2021-02-14	(100) BMR	21.92	UNWIN	\$ 400	\$ 800	\$ -	\$ -	\$ -
127	225304	41P06B296	SCMC	Active	2021-01-26	2021-01-26	(100) BMR	21.91	UNWIN	\$ 400	\$ 800	\$ -	\$ 103	\$ 103
128	227386	41P03J035	SCMC	Active	2021-01-16	2021-01-16	(100) BMR	21.92	UNWIN	\$ 400	\$ 800	\$ -	\$ 40	\$ 40
129	228102	41P06B160	SCMC	Active	2021-02-14	2021-02-14	(100) BMR	21.90	UNWIN	\$ 400	\$ 400	\$ -	\$ -	\$ -
130	231259	41P06A043	SCMC	Active	2021-02-14	2021-02-14	(100) BMR	21.89	BROWNING,UNWIN	\$ 400	\$ 800	\$ -	\$ -	\$ -
131	230129	41P06A349	SCMC	Active	2021-05-09	2021-05-09	(100) BMR	21.91	STULL,UNWIN	\$ 400	\$ 800	\$ -	\$ 103	\$ 103
132	235196	41P06A147	BCMC	Active	2021-03-23	2021-03-23	(100) BMR	8.01	UNWIN	\$ 200	\$ 400	\$ -	\$ -	\$ -
133	235197	41P06A171	SCMC	Active	2021-03-23	2021-03-23	(100) BMR	21.90	STULL	\$ 400	\$ 800	\$ -	\$ -	\$ -
134	232614	41P03J040	SCMC	Active	2021-01-16	2021-01-16	(100) BMR	21.92	UNWIN	\$ 400	\$ 800	\$ -	\$ 40	\$ 40

135	232615	41P03J057	SCMC	Active	2021-01-16	2021-01-16	(100) BMR	21.92	UNWIN	\$ 400	\$ 800	\$ -	\$ 40	\$ 40
136	233325	41P03J154	SCMC	Active	2021-01-16	2021-01-16	(100) BMR	21.93	LEASK	\$ 400	\$ 800	\$ -	\$ 40	\$ 40
137	233270	41P03J061	SCMC	Active	2021-01-16	2021-01-16	(100) BMR	21.92	LEASK,UNWIN	\$ 400	\$ 800	\$ -	\$ 40	\$ 40
138	236891	41P06A186	BCMC	Active	2020-11-04	2020-11-04	(100) BMR	16.07	UNWIN	\$ 200	\$ 400	\$ -	\$ 20	\$ 20
139	236896	41P06B355	SCMC	Active	2021-01-26	2021-01-26	(100) BMR	21.91	UNWIN	\$ 400	\$ 800	\$ -	\$ 103	\$ 103
140	237445	41P03J100	SCMC	Active	2021-01-16	2021-01-16	(100) BMR	21.92	LEASK	\$ 400	\$ 800	\$ -	\$ 40	\$ 40
141	233891	41P06A127	BCMC	Active	2021-10-17	2021-10-17	(100) BMR	13.86	UNWIN	\$ 200	\$ 400	\$ -	\$ -	\$ -
142	233892	41P06A167	BCMC	Active	2020-11-04	2020-11-04	(100) BMR	13.91	UNWIN	\$ 200	\$ 400	\$ -	\$ 20	\$ 20
143	237822	41P06H325	SCMC	Active	2021-03-23	2021-03-23	(100) BMR	21.88	BROWNING	\$ 400	\$ 800	\$ -	\$ -	\$ -
144	240940	41P06A163	SCMC	Active	2021-02-14	2021-02-14	(100) BMR	21.90	UNWIN	\$ 400	\$ 800	\$ -	\$ -	\$ -
145	239505	41P06G400	SCMC	Active	2021-02-14	2021-02-14	(100) BMR	21.88	BROWNING	\$ 400	\$ 600	\$ -	\$ -	\$ -
146	239506	41P06A022	SCMC	Active	2021-02-14	2021-02-14	(100) BMR	21.89	BROWNING	\$ 400	\$ 800	\$ -	\$ -	\$ -
147	241026	41P06H327	SCMC	Active	2021-03-23	2021-03-23	(100) BMR	21.88	BROWNING	\$ 400	\$ 800	\$ -	\$ -	\$ -
148	239477	41P06A085	SCMC	Active	2021-10-17	2021-10-17	(100) BMR	21.89	UNWIN	\$ 400	\$ 800	\$ -	\$ -	\$ -
149	239478	41P06A104	BCMC	Active	2021-10-17	2021-10-17	(100) BMR	16.53	UNWIN	\$ 200	\$ 400	\$ -	\$ -	\$ -
150	242166	41P06A390	SCMC	Active	2021-05-09	2021-05-09	(100) BMR	21.92	STULL	\$ 400	\$ 800	\$ -	\$ 103	\$ 103
151	243143	41P06A045	BCMC	Active	2021-03-23	2021-03-23	(100) BMR	17.05	BROWNING,UNWIN	\$ 200	\$ 400	\$ -	\$ -	\$ -
152	243705	41P06A070	SCMC	Active	2021-03-23	2021-03-23	(100) BMR	21.89	STULL	\$ 400	\$ 800	\$ -	\$ -	\$ -
153	244470	41P06G380	SCMC	Active	2021-02-14	2021-02-14	(100) BMR	21.88	BROWNING	\$ 400	\$ 600	\$ -	\$ 102	\$ 102
154	246085	41P06A146	SCMC	Active	2020-11-04	2020-11-04	(100) BMR	21.90	UNWIN	\$ 400	\$ 800	\$ -	\$ 40	\$ 40
155	249595	41P06A306	SCMC	Active	2021-05-09	2021-05-09	(100) BMR	21.91	UNWIN	\$ 400	\$ 800	\$ -	\$ 103	\$ 103
156	249596	41P06A304	SCMC	Active	2021-05-09	2021-05-09	(100) BMR	21.91	UNWIN	\$ 400	\$ 800	\$ -	\$ 40	\$ 40
157	249663	41P06A350	SCMC	Active	2021-05-09	2021-05-09	(100) BMR	21.91	STULL	\$ 400	\$ 800	\$ -	\$ 103	\$ 103
158	249082	41P06H328	SCMC	Active	2021-03-23	2021-03-23	(100) BMR	21.88	BROWNING	\$ 400	\$ 800	\$ -	\$ -	\$ -
159	245811	41P06A029	SCMC	Active	2021-03-23	2021-03-23	(100) BMR	21.89	BROWNING,DUFFERIN	\$ 400	\$ 800	\$ -	\$ -	\$ -
160	247589	41P03J107	SCMC	Active	2021-02-14	2021-02-14	(100) BMR	21.93	LEASK	\$ 400	\$ 800	\$ -	\$ 103	\$ 103
161	247590	41P03J105	SCMC	Active	2021-02-14	2021-02-14	(100) BMR	21.93	LEASK	\$ 400	\$ 800	\$ -	\$ 103	\$ 103
162	248055	41P06B357	BCMC	Active	2020-11-04	2020-11-04	(100) BMR	20.53	UNWIN	\$ 200	\$ 400	\$ -	\$ 20	\$ 20
163	250226	41P06A104	BCMC	Active	2021-02-14	2021-02-14	(100) BMR	5.37	UNWIN	\$ 200	\$ 400	\$ -	\$ 20	\$ 20
164	250732	41P06A124	BCMC	Active	2021-02-14	2021-02-14	(100) BMR	5.40	UNWIN	\$ 200	\$ 400	\$ -	\$ 20	\$ 20
165	251232	41P06A049	SCMC	Active	2021-03-23	2021-03-23	(100) BMR	21.89	BROWNING,DUFFERIN,STULL,UNWIN	\$ 400	\$ 800	\$ -	\$ -	\$ -
166	251233	41P06A048	SCMC	Active	2021-03-23	2021-03-23	(100) BMR	21.89	BROWNING,UNWIN	\$ 400	\$ 800	\$ -	\$ -	\$ -
167	255867	41P06H305	SCMC	Active	2021-03-23	2021-03-23	(100) BMR	21.88	BROWNING	\$ 400	\$ 600	\$ -	\$ -	\$ -
168	253315	41P06A225	SCMC	Active	2021-04-10	2021-04-10	(100) BMR	21.90	UNWIN	\$ 400	\$ 800	\$ -	\$ -	\$ -
169	252767	41P03J136	BCMC	Active	2021-01-16	2021-01-16	(100) BMR	13.60	LEASK	\$ 200	\$ 400	\$ -	\$ 20	\$ 20
170	255349	41P06A181	SCMC	Active	2021-04-10	2021-04-10	(100) BMR	21.90	UNWIN	\$ 400	\$ 800	\$ -	\$ -	\$ -
171	255523	41P06B373	SCMC	Active	2021-01-26	2021-01-26	(100) BMR	21.91	UNWIN	\$ 400	\$ 800	\$ -	\$ 103	\$ 103
172	256898	41P06B239	SCMC	Active	2021-01-26	2021-01-26	(100) BMR	21.90	UNWIN	\$ 400	\$ 400	\$ -	\$ 82	\$ 82
173	260397	41P06B240	SCMC	Active	2021-04-10	2021-04-10	(100) BMR	21.90	UNWIN	\$ 400	\$ 400	\$ -	\$ -	\$ -
174	263233	41P06A091	SCMC	Active	2021-03-23	2021-03-23	(100) BMR	21.89	STULL	\$ 400	\$ 800	\$ -	\$ -	\$ -
175	263234	41P06A107	BCMC	Active	2021-03-23	2021-03-23	(100) BMR	8.05	UNWIN	\$ 200	\$ 400	\$ -	\$ -	\$ -
176	263954	41P06H342	SCMC	Active	2021-02-14	2021-02-14	(100) BMR	21.88	BROWNING	\$ 400	\$ 800	\$ -	\$ -	\$ -
177	266734	41P06H374	SCMC	Active	2021-06-13	2021-06-13	(100) BMR	21.88	DUFFERIN	\$ 400	\$ 800	\$ -	\$ 464	\$ 464
178	266744	41P06H372	SCMC	Active	2021-06-13	2021-06-13	(100) BMR	21.88	DUFFERIN	\$ 400	\$ 800	\$ -	\$ 424	\$ 424
179	272396	41P06A127	BCMC	Active	2021-03-23	2021-03-23	(100) BMR	8.03	UNWIN	\$ 200	\$ 400	\$ -	\$ -	\$ -
180	274714	41P06H306	SCMC	Active	2021-03-23	2021-03-23	(100) BMR	21.88	BROWNING	\$ 400	\$ 600	\$ -	\$ -	\$ -
181	277737	41P06H388	SCMC	Active	2021-03-23	2021-03-23	(100) BMR	21.88	BROWNING	\$ 400	\$ 800	\$ -	\$ -	\$ -

182	281333	41P03J159	BCMC	Active	2021-01-16	2021-01-16	(100) BMR	15.34	LEASK	\$ 200	\$ 400	\$ -	\$ 20	\$ 20
183	281334	41P03J180	SCMC	Active	2021-01-16	2021-01-16	(100) BMR	21.93	LEASK	\$ 400	\$ 800	\$ -	\$ 40	\$ 40
184	281918	41P06A124	BCMC	Active	2021-10-17	2021-10-17	(100) BMR	16.50	UNWIN	\$ 200	\$ 400	\$ -	\$ -	\$ -
185	281802	41P06A189	SCMC	Active	2021-04-10	2021-04-10	(100) BMR	21.90	STULL,UNWIN	\$ 400	\$ 800	\$ -	\$ -	\$ -
186	281803	41P06A211	SCMC	Active	2021-04-10	2021-04-10	(100) BMR	21.90	STULL	\$ 400	\$ 800	\$ -	\$ -	\$ -
187	281371	41P06B338	BCMC	Active	2021-01-26	2021-01-26	(100) BMR	3.27	UNWIN	\$ 200	\$ 400	\$ -	\$ 20	\$ 20
188	281272	41P03J115	SCMC	Active	2021-01-16	2021-01-16	(100) BMR	21.93	LEASK	\$ 400	\$ 800	\$ -	\$ 40	\$ 40
189	279256	41P06A081	SCMC	Active	2021-02-14	2021-02-14	(100) BMR	21.89	UNWIN	\$ 400	\$ 800	\$ -	\$ -	\$ -
190	282472	41P06A244	SCMC	Active	2021-04-10	2021-04-10	(100) BMR	21.90	UNWIN	\$ 400	\$ 800	\$ -	\$ -	\$ -
191	280499	41P06A302	SCMC	Active	2021-04-10	2021-04-10	(100) BMR	21.91	UNWIN	\$ 400	\$ 800	\$ -	\$ -	\$ -
192	284043	41P06B376	SCMC	Active	2021-01-26	2021-01-26	(100) BMR	21.91	UNWIN	\$ 400	\$ 800	\$ -	\$ 103	\$ 103
193	282646	41P03I046	SCMC	Active	2021-02-14	2021-02-14	(100) BMR	21.92	UNWIN	\$ 400	\$ 800	\$ -	\$ -	\$ -
194	285438	41P06B259	SCMC	Active	2021-01-26	2021-01-26	(100) BMR	21.90	UNWIN	\$ 400	\$ 800	\$ -	\$ 40	\$ 40
195	288047	41P06A364	SCMC	Active	2021-05-09	2021-05-09	(100) BMR	21.91	UNWIN	\$ 400	\$ 800	\$ -	\$ 103	\$ 103
196	287186	41P06B358	SCMC	Active	2020-11-04	2020-11-04	(100) BMR	21.91	UNWIN	\$ 400	\$ 800	\$ -	\$ 40	\$ 40
197	290536	41P06A186	BCMC	Active	2021-04-10	2021-04-10	(100) BMR	5.83	UNWIN	\$ 200	\$ 400	\$ -	\$ -	\$ -
198	290537	41P06A204	SCMC	Active	2021-04-10	2021-04-10	(100) BMR	21.90	UNWIN	\$ 400	\$ 800	\$ -	\$ -	\$ -
199	292703	41P03I127	SCMC	Active	2021-02-14	2021-02-14	(100) BMR	21.93	LEASK	\$ 400	\$ 800	\$ -	\$ -	\$ -
200	290697	41P03I007	SCMC	Active	2021-02-14	2021-02-14	(100) BMR	21.92	UNWIN	\$ 400	\$ 800	\$ -	\$ -	\$ -
201	290698	41P03I044	SCMC	Active	2021-02-14	2021-02-14	(100) BMR	21.92	UNWIN	\$ 400	\$ 800	\$ -	\$ -	\$ -
202	293485	41P06B257	SCMC	Active	2021-01-26	2021-01-26	(100) BMR	21.90	UNWIN	\$ 400	\$ 400	\$ -	\$ 20	\$ 20
203	297945	41P06A102	SCMC	Active	2021-02-14	2021-02-14	(100) BMR	21.89	UNWIN	\$ 400	\$ 800	\$ -	\$ -	\$ -
204	296090	41P06A141	SCMC	Active	2021-02-14	2021-02-14	(100) BMR	21.90	UNWIN	\$ 400	\$ 800	\$ -	\$ -	\$ -
205	299311	41P03J079	BCMC	Active	2021-01-16	2021-01-16	(100) BMR	19.21	LEASK,UNWIN	\$ 200	\$ 400	\$ -	\$ 20	\$ 20
206	298140	41P03J137	SCMC	Active	2020-11-04	2020-11-04	(100) BMR	21.93	LEASK	\$ 400	\$ 800	\$ -	\$ 296	\$ 296
207	298141	41P03J158	BCMC	Active	2020-11-04	2020-11-04	(100) BMR	7.13	LEASK	\$ 200	\$ 400	\$ -	\$ 20	\$ 20
208	299609	41P03J159	BCMC	Active	2020-11-04	2020-11-04	(100) BMR	6.59	LEASK	\$ 200	\$ 400	\$ -	\$ 20	\$ 20
209	299193	41P06B340	BCMC	Active	2021-04-10	2021-04-10	(100) BMR	13.71	UNWIN	\$ 200	\$ 400	\$ -	\$ -	\$ -
210	300859	41P06B397	BCMC	Active	2021-01-26	2021-01-26	(100) BMR	9.56	UNWIN	\$ 200	\$ 400	\$ -	\$ 20	\$ 20
211	302627	41P06H373	SCMC	Active	2021-06-13	2021-06-13	(100) BMR	21.88	DUFFERIN	\$ 400	\$ 800	\$ -	\$ 424	\$ 424
212	304858	41P03I164	SCMC	Active	2021-02-14	2021-02-14	(100) BMR	21.93	LEASK	\$ 400	\$ 800	\$ -	\$ -	\$ -
213	304234	41P06A185	BCMC	Active	2020-11-04	2020-11-04	(100) BMR	16.10	UNWIN	\$ 200	\$ 400	\$ -	\$ 20	\$ 20
214	302842	41P03I045	SCMC	Active	2021-02-14	2021-02-14	(100) BMR	21.92	UNWIN	\$ 400	\$ 800	\$ -	\$ -	\$ -
215	305523	41P03I103	SCMC	Active	2021-02-14	2021-02-14	(100) BMR	21.93	LEASK	\$ 400	\$ 800	\$ -	\$ -	\$ -
216	302809	41P03I143	SCMC	Active	2021-02-14	2021-02-14	(100) BMR	21.93	LEASK	\$ 400	\$ 800	\$ -	\$ -	\$ -
217	308342	41P06H390	SCMC	Active	2021-03-23	2021-03-23	(100) BMR	21.88	DUFFERIN	\$ 400	\$ 800	\$ -	\$ -	\$ -
218	309520	41P06A388	SCMC	Active	2021-05-09	2021-05-09	(100) BMR	21.92	UNWIN	\$ 400	\$ 800	\$ -	\$ 103	\$ 103
219	308815	41P06A328	SCMC	Active	2021-05-09	2021-05-09	(100) BMR	21.91	UNWIN	\$ 400	\$ 800	\$ -	\$ 103	\$ 103
220	308258	41P06A367	SCMC	Active	2021-05-09	2021-05-09	(100) BMR	21.91	UNWIN	\$ 400	\$ 800	\$ -	\$ 103	\$ 103
221	310097	41P06A101	SCMC	Active	2021-02-14	2021-02-14	(100) BMR	21.89	UNWIN	\$ 400	\$ 800	\$ -	\$ -	\$ -
222	311513	41P06B396	SCMC	Active	2021-01-26	2021-01-26	(100) BMR	21.92	UNWIN	\$ 400	\$ 800	\$ -	\$ 103	\$ 103
223	313631	41P03I085	SCMC	Active	2021-02-14	2021-02-14	(100) BMR	21.92	LEASK	\$ 400	\$ 800	\$ -	\$ -	\$ -
224	318741	41P03J178	SCMC	Active	2021-01-16	2021-01-16	(100) BMR	21.93	LEASK	\$ 400	\$ 800	\$ -	\$ 40	\$ 40
225	317155	41P06A047	BCMC	Active	2021-03-23	2021-03-23	(100) BMR	18.81	BROWNING,UNWIN	\$ 200	\$ 400	\$ -	\$ -	\$ -
226	318164	41P03J134	SCMC	Active	2021-01-16	2021-01-16	(100) BMR	21.93	LEASK	\$ 400	\$ 800	\$ -	\$ 40	\$ 40
227	318775	41P06B339	BCMC	Active	2021-01-26	2021-01-26	(100) BMR	3.23	UNWIN	\$ 200	\$ 400	\$ -	\$ 20	\$ 20
228	315047	41P06H387	SCMC	Active	2021-03-23	2021-03-23	(100) BMR	21.88	BROWNING	\$ 400	\$ 800	\$ -	\$ -	\$ -

229	317500	41P03J060	SCMC	Active	2021-01-16	2021-01-16	(100) BMR	21.92	UNWIN	\$ 400	\$ 800	\$ -	\$ 40	\$ 40
230	318817	41P06A125	SCMC	Active	2021-10-17	2021-10-17	(100) BMR	21.89	UNWIN	\$ 400	\$ 800	\$ -	\$ -	\$ -
231	317501	41P03J080	SCMC	Active	2021-01-16	2021-01-16	(100) BMR	21.92	LEASK,UNWIN	\$ 400	\$ 800	\$ -	\$ 40	\$ 40
232	315535	41P06A161	SCMC	Active	2021-02-14	2021-02-14	(100) BMR	21.90	UNWIN	\$ 400	\$ 800	\$ -	\$ -	\$ -
233	315547	41P06A290	SCMC	Active	2021-05-09	2021-05-09	(100) BMR	21.91	STULL	\$ 400	\$ 800	\$ -	\$ 103	\$ 103
234	315548	41P06A329	SCMC	Active	2021-05-09	2021-05-09	(100) BMR	21.91	STULL,UNWIN	\$ 400	\$ 800	\$ -	\$ 103	\$ 103
235	322887	41P06H371	SCMC	Active	2021-06-13	2021-06-13	(100) BMR	21.88	DUFFERIN	\$ 400	\$ 800	\$ -	\$ 423	\$ 423
236	325083	41P06B399	BCMC	Active	2020-11-04	2020-11-04	(100) BMR	13.17	UNWIN	\$ 200	\$ 400	\$ -	\$ 20	\$ 20
237	329922	41P06A069	SCMC	Active	2021-03-23	2021-03-23	(100) BMR	21.89	STULL,UNWIN	\$ 400	\$ 800	\$ -	\$ -	\$ -
238	335041	41P03I086	SCMC	Active	2021-02-14	2021-02-14	(100) BMR	21.92	LEASK	\$ 400	\$ 800	\$ -	\$ -	\$ -
239	335042	41P03I084	SCMC	Active	2021-02-14	2021-02-14	(100) BMR	21.92	LEASK	\$ 400	\$ 800	\$ -	\$ -	\$ -
240	336350	41P06A346	SCMC	Active	2021-05-09	2021-05-09	(100) BMR	21.91	UNWIN	\$ 400	\$ 800	\$ -	\$ 103	\$ 103
241	338214	41P06A061	SCMC	Active	2021-02-14	2021-02-14	(100) BMR	21.89	UNWIN	\$ 400	\$ 800	\$ -	\$ -	\$ -
242	339304	41P06A088	SCMC	Active	2021-03-23	2021-03-23	(100) BMR	21.89	UNWIN	\$ 400	\$ 800	\$ -	\$ -	\$ -
243	336408	41P06A310	SCMC	Active	2021-05-09	2021-05-09	(100) BMR	21.91	STULL	\$ 400	\$ 800	\$ -	\$ 103	\$ 103
244	328271	41P06A261	SCMC	Active	2021-04-10	2021-04-10	(100) BMR	21.91	UNWIN	\$ 400	\$ 800	\$ -	\$ -	\$ -
245	330961	41P06A151	SCMC	Active	2021-03-23	2021-03-23	(100) BMR	21.90	STULL	\$ 400	\$ 800	\$ -	\$ -	\$ -
246	343034	41P03J099	BCMC	Active	2021-01-16	2021-01-16	(100) BMR	1.66	LEASK	\$ 200	\$ 400	\$ -	\$ 20	\$ 20
247	340877	41P06A126	SCMC	Active	2021-10-17	2021-10-17	(100) BMR	21.89	UNWIN	\$ 400	\$ 800	\$ -	\$ -	\$ -
248	340312	41P03J179	SCMC	Active	2021-01-16	2021-01-16	(100) BMR	21.93	LEASK	\$ 400	\$ 800	\$ -	\$ 40	\$ 40
249	340313	41P03J177	SCMC	Active	2021-01-16	2021-01-16	(100) BMR	21.93	LEASK	\$ 400	\$ 800	\$ -	\$ 40	\$ 40
250	342125	41P06A224	SCMC	Active	2021-04-10	2021-04-10	(100) BMR	21.90	UNWIN	\$ 400	\$ 800	\$ -	\$ -	\$ -
251	340253	41P03I042	SCMC	Active	2021-01-16	2021-01-16	(100) BMR	21.92	UNWIN	\$ 400	\$ 800	\$ -	\$ 40	\$ 40
252	333356	41P06A030	SCMC	Active	2021-03-23	2021-03-23	(100) BMR	21.89	DUFFERIN	\$ 400	\$ 800	\$ -	\$ -	\$ -
253	503581	41P06H253	SCMC	Active	2021-04-10	2021-04-10	(100) BMR	21.87	DUFFERIN	\$ 400	\$ 400	\$ -	\$ 23	\$ 23
254	503582	41P06H272	SCMC	Active	2021-04-10	2021-04-10	(100) BMR	21.87	DUFFERIN	\$ 400	\$ 400	\$ -	\$ 23	\$ 23
255	503583	41P06H273	SCMC	Active	2021-04-10	2021-04-10	(100) BMR	21.87	DUFFERIN	\$ 400	\$ 400	\$ -	\$ 23	\$ 23
256	503588	41P06H332	SCMC	Active	2021-04-10	2021-04-10	(100) BMR	21.88	DUFFERIN	\$ 400	\$ 400	\$ -	\$ 23	\$ 23
257	503589	41P06H333	SCMC	Active	2021-04-10	2021-04-10	(100) BMR	21.88	DUFFERIN	\$ 400	\$ 400	\$ -	\$ 23	\$ 23
258	503592	41P06H353	SCMC	Active	2021-04-10	2021-04-10	(100) BMR	21.88	DUFFERIN	\$ 400	\$ 400	\$ -	\$ 23	\$ 23
259	503593	41P06H354	SCMC	Active	2021-04-10	2021-04-10	(100) BMR	21.88	DUFFERIN	\$ 400	\$ 400	\$ -	\$ 63	\$ 63
260	339593	41P03J019	SCMC	Active	2021-01-16	2021-01-16	(100) BMR	21.92	UNWIN	\$ 400	\$ 800	\$ -	\$ 40	\$ 40
261	339594	41P03J059	SCMC	Active	2021-01-16	2021-01-16	(100) BMR	21.92	UNWIN	\$ 400	\$ 800	\$ -	\$ 40	\$ 40
262	106822	41P03J175	SCMC	Active	2021-01-16	2021-01-16	(100) BMR	21.93	LEASK	\$ 400	\$ 800	\$ -	\$ 40	\$ 40
263	103706	41P06A362	SCMC	Active	2021-04-10	2021-04-10	(100) BMR	21.91	UNWIN	\$ 400	\$ 800	\$ -	\$ -	\$ -
264	103707	41P06A361	SCMC	Active	2021-04-10	2021-04-10	(100) BMR	21.91	UNWIN	\$ 400	\$ 800	\$ -	\$ -	\$ -
265	106757	41P03I021	SCMC	Active	2021-01-16	2021-01-16	(100) BMR	21.92	UNWIN	\$ 400	\$ 800	\$ -	\$ 40	\$ 40
266	104328	41P06A248	SCMC	Active	2021-04-10	2021-04-10	(100) BMR	21.90	UNWIN	\$ 400	\$ 800	\$ -	\$ -	\$ -
267	104329	41P06A270	SCMC	Active	2021-05-09	2021-05-09	(100) BMR	21.91	STULL	\$ 400	\$ 800	\$ -	\$ 102	\$ 102
268	106796	41P06B294	SCMC	Active	2021-01-26	2021-01-26	(100) BMR	21.91	UNWIN	\$ 400	\$ 800	\$ -	\$ 102	\$ 102
269	104750	41P06B378	SCMC	Active	2020-11-04	2020-11-04	(100) BMR	21.91	UNWIN	\$ 400	\$ 800	\$ -	\$ 40	\$ 40
270	107926	41P03I165	SCMC	Active	2021-02-14	2021-02-14	(100) BMR	21.93	LEASK	\$ 400	\$ 800	\$ -	\$ -	\$ -
271	108087	41P03I063	SCMC	Active	2021-02-14	2021-02-14	(100) BMR	21.92	LEASK,UNWIN	\$ 400	\$ 800	\$ -	\$ -	\$ -
272	108988	41P03J076	BCMC	Active	2020-11-04	2020-11-04	(100) BMR	1.07	LEASK,UNWIN	\$ 200	\$ 400	\$ -	\$ 20	\$ 20
273	108989	41P03J098	SCMC	Active	2020-11-04	2020-11-04	(100) BMR	21.92	LEASK	\$ 400	\$ 800	\$ -	\$ 40	\$ 40
274	108990	41P03J119	BCMC	Active	2020-11-04	2020-11-04	(100) BMR	20.30	LEASK	\$ 200	\$ 400	\$ -	\$ 20	\$ 20
275	107818	41P06A184	BCMC	Active	2020-11-04	2020-11-04	(100) BMR	12.09	UNWIN	\$ 200	\$ 400	\$ -	\$ 20	\$ 20



276	109442	41P06A326	SCMC	Active	2021-05-09	2021-05-09	(100) BMR	21.91	UNWIN	\$ 400	\$ 800	\$ -	\$ 102	\$ 102
277	115683	41P06H391	SCMC	Active	2021-06-13	2021-06-13	(100) BMR	21.88	DUFFERIN	\$ 400	\$ 800	\$ -	\$ 422	\$ 422
278	120252	41P03J077	BCMC	Active	2020-11-04	2020-11-04	(100) BMR	2.81	LEASK,UNWIN	\$ 200	\$ 400	\$ -	\$ 20	\$ 20
279	118906	41P06A245	SCMC	Active	2021-04-10	2021-04-10	(100) BMR	21.90	UNWIN	\$ 400	\$ 800	\$ -	\$ -	\$ -
280	118907	41P06A265	SCMC	Active	2021-05-09	2021-05-09	(100) BMR	21.91	UNWIN	\$ 400	\$ 800	\$ -	\$ 40	\$ 40
281	121983	41P06A271	SCMC	Active	2021-04-10	2021-04-10	(100) BMR	21.91	STULL	\$ 400	\$ 800	\$ -	\$ -	\$ -
282	122002	41P06B316	SCMC	Active	2021-01-26	2021-01-26	(100) BMR	21.91	UNWIN	\$ 400	\$ 800	\$ -	\$ 102	\$ 102
283	121979	41P06A210	SCMC	Active	2021-04-10	2021-04-10	(100) BMR	21.90	STULL	\$ 400	\$ 800	\$ -	\$ -	\$ -
284	121434	41P03J095	SCMC	Active	2021-01-16	2021-01-16	(100) BMR	21.92	LEASK	\$ 400	\$ 800	\$ -	\$ 40	\$ 40
285	119309	41P06A263	SCMC	Active	2021-05-09	2021-05-09	(100) BMR	21.91	UNWIN	\$ 400	\$ 800	\$ -	\$ 40	\$ 40
286	119310	41P06A262	SCMC	Active	2021-04-10	2021-04-10	(100) BMR	21.91	UNWIN	\$ 400	\$ 800	\$ -	\$ -	\$ -
287	123175	41P06A226	SCMC	Active	2021-04-10	2021-04-10	(100) BMR	21.90	UNWIN	\$ 400	\$ 800	\$ -	\$ -	\$ -
288	123304	41P06A381	SCMC	Active	2021-04-10	2021-04-10	(100) BMR	21.92	UNWIN	\$ 400	\$ 800	\$ -	\$ -	\$ -
289	123360	41P06A385	SCMC	Active	2021-05-09	2021-05-09	(100) BMR	21.92	UNWIN	\$ 400	\$ 800	\$ -	\$ 102	\$ 102
290	123272	41P06A363	SCMC	Active	2021-05-09	2021-05-09	(100) BMR	21.91	UNWIN	\$ 400	\$ 800	\$ -	\$ 102	\$ 102
291	128764	41P06A164	BCMC	Active	2021-02-14	2021-02-14	(100) BMR	5.45	UNWIN	\$ 200	\$ 400	\$ -	\$ 20	\$ 20
292	128765	41P06A162	SCMC	Active	2021-02-14	2021-02-14	(100) BMR	21.90	UNWIN	\$ 400	\$ 800	\$ -	\$ 40	\$ 40
293	128766	41P06B180	SCMC	Active	2021-02-14	2021-02-14	(100) BMR	21.90	UNWIN	\$ 400	\$ 400	\$ -	\$ 82	\$ 82
294	129485	41P06A370	SCMC	Active	2021-05-09	2021-05-09	(100) BMR	21.91	STULL	\$ 400	\$ 800	\$ -	\$ 102	\$ 102
295	126771	41P06A107	BCMC	Active	2021-10-17	2021-10-17	(100) BMR	13.84	UNWIN	\$ 200	\$ 400	\$ -	\$ -	\$ -
296	126800	41P06A001	SCMC	Active	2021-02-14	2021-02-14	(100) BMR	21.88	BROWNING	\$ 400	\$ 800	\$ -	\$ -	\$ -
297	126131	41P06B258	SCMC	Active	2021-01-26	2021-01-26	(100) BMR	21.90	UNWIN	\$ 400	\$ 800	\$ -	\$ 40	\$ 40
298	133570	41P06B297	SCMC	Active	2021-01-26	2021-01-26	(100) BMR	21.91	UNWIN	\$ 400	\$ 800	\$ -	\$ 40	\$ 40
299	131399	41P06A103	SCMC	Active	2021-02-14	2021-02-14	(100) BMR	21.89	UNWIN	\$ 400	\$ 800	\$ -	\$ 40	\$ 40
300	130271	41P06A348	SCMC	Active	2021-05-09	2021-05-09	(100) BMR	21.91	UNWIN	\$ 400	\$ 800	\$ -	\$ 102	\$ 102
301	133484	41P03J076	BCMC	Active	2021-01-16	2021-01-16	(100) BMR	20.85	LEASK,UNWIN	\$ 200	\$ 400	\$ -	\$ 20	\$ 20
302	133531	41P06B317	SCMC	Active	2021-01-26	2021-01-26	(100) BMR	21.91	UNWIN	\$ 400	\$ 800	\$ -	\$ 40	\$ 40
303	136665	41P06A183	SCMC	Active	2021-04-10	2021-04-10	(100) BMR	21.90	UNWIN	\$ 400	\$ 800	\$ -	\$ -	\$ -
304	134816	41P03I163	SCMC	Active	2021-02-14	2021-02-14	(100) BMR	21.93	LEASK	\$ 400	\$ 800	\$ -	\$ -	\$ -
305	134854	41P03I005	SCMC	Active	2021-02-14	2021-02-14	(100) BMR	21.92	UNWIN	\$ 400	\$ 800	\$ -	\$ -	\$ -
306	134855	41P03I024	SCMC	Active	2021-02-14	2021-02-14	(100) BMR	21.92	UNWIN	\$ 400	\$ 800	\$ -	\$ -	\$ -
307	138208	41P03J014	SCMC	Active	2021-01-16	2021-01-16	(100) BMR	21.92	UNWIN	\$ 400	\$ 800	\$ -	\$ 40	\$ 40
308	137535	41P03I102	SCMC	Active	2021-01-16	2021-01-16	(100) BMR	21.93	LEASK	\$ 400	\$ 800	\$ -	\$ 40	\$ 40
309	139343	41P06B398	BCMC	Active	2020-11-04	2020-11-04	(100) BMR	13.17	UNWIN	\$ 200	\$ 400	\$ -	\$ 20	\$ 20
310	139780	41P06H331	SCMC	Active	2021-03-23	2021-03-23	(100) BMR	21.88	DUFFERIN	\$ 400	\$ 800	\$ -	\$ 23	\$ 23
311	139781	41P06H330	SCMC	Active	2021-03-23	2021-03-23	(100) BMR	21.88	DUFFERIN	\$ 400	\$ 800	\$ -	\$ -	\$ -
312	138848	41P06A021	SCMC	Active	2021-02-14	2021-02-14	(100) BMR	21.89	BROWNING	\$ 400	\$ 800	\$ -	\$ -	\$ -
313	142500	41P06H346	SCMC	Active	2021-03-23	2021-03-23	(100) BMR	21.88	BROWNING	\$ 400	\$ 800	\$ -	\$ -	\$ -
314	142501	41P06H345	SCMC	Active	2021-03-23	2021-03-23	(100) BMR	21.88	BROWNING	\$ 400	\$ 800	\$ -	\$ -	\$ -
315	142028	41P06A011	SCMC	Active	2021-06-13	2021-06-13	(100) BMR	21.88	DUFFERIN	\$ 400	\$ 800	\$ -	\$ -	\$ -
316	145734	41P06H370	SCMC	Active	2021-03-23	2021-03-23	(100) BMR	21.88	DUFFERIN	\$ 400	\$ 800	\$ -	\$ -	\$ -
317	144282	41P06A087	BCMC	Active	2021-10-17	2021-10-17	(100) BMR	13.81	UNWIN	\$ 200	\$ 400	\$ -	\$ -	\$ -
318	142284	41P06B377	BCMC	Active	2021-01-26	2021-01-26	(100) BMR	1.37	UNWIN	\$ 200	\$ 400	\$ -	\$ 20	\$ 20
319	142285	41P06B375	SCMC	Active	2021-01-26	2021-01-26	(100) BMR	21.91	UNWIN	\$ 400	\$ 800	\$ -	\$ 103	\$ 103
320	148864	41P03I023	SCMC	Active	2021-02-14	2021-02-14	(100) BMR	21.92	UNWIN	\$ 400	\$ 800	\$ -	\$ -	\$ -
321	149422	41P03I041	SCMC	Active	2021-01-16	2021-01-16	(100) BMR	21.92	UNWIN	\$ 400	\$ 800	\$ -	\$ 40	\$ 40
322	149478	41P03I156	BCMC	Active	2021-01-16	2021-01-16	(100) BMR	19.20	LEASK	\$ 200	\$ 400	\$ -	\$ 20	\$ 20

323	149092	41P06H363	SCMC	Active	2021-02-14	2021-02-14	(100) BMR	21.88	BROWNING	\$ 400	\$ 800	\$ -	\$ -	\$ -
324	149403	41P03J094	SCMC	Active	2021-01-16	2021-01-16	(100) BMR	21.92	LEASK	\$ 400	\$ 800	\$ -	\$ 40	\$ 40
325	150818	41P03I026	SCMC	Active	2021-02-14	2021-02-14	(100) BMR	21.92	UNWIN	\$ 400	\$ 800	\$ -	\$ -	\$ -
326	153120	41P06A221	SCMC	Active	2021-04-10	2021-04-10	(100) BMR	21.90	UNWIN	\$ 400	\$ 800	\$ -	\$ -	\$ -
327	153121	41P06A242	SCMC	Active	2021-04-10	2021-04-10	(100) BMR	21.90	UNWIN	\$ 400	\$ 800	\$ -	\$ -	\$ -
328	156094	41P06H365	SCMC	Active	2021-03-23	2021-03-23	(100) BMR	21.88	BROWNING	\$ 400	\$ 800	\$ -	\$ -	\$ -
329	155886	41P06B377	BCMC	Active	2020-11-04	2020-11-04	(100) BMR	20.55	UNWIN	\$ 200	\$ 400	\$ -	\$ 20	\$ 20
330	160974	41P06A268	SCMC	Active	2021-05-09	2021-05-09	(100) BMR	21.91	UNWIN	\$ 400	\$ 800	\$ -	\$ 103	\$ 103
331	161812	41P06A130	SCMC	Active	2021-03-23	2021-03-23	(100) BMR	21.89	STULL	\$ 400	\$ 800	\$ -	\$ -	\$ -
332	159654	41P06B300	SCMC	Active	2021-04-10	2021-04-10	(100) BMR	21.91	UNWIN	\$ 400	\$ 800	\$ -	\$ -	\$ -
333	164491	41P03J037	SCMC	Active	2021-01-16	2021-01-16	(100) BMR	21.92	UNWIN	\$ 400	\$ 800	\$ -	\$ 40	\$ 40
334	164625	41P03J116	BCMC	Active	2021-01-16	2021-01-16	(100) BMR	13.56	LEASK	\$ 200	\$ 400	\$ -	\$ 20	\$ 20
335	165760	41P06A303	SCMC	Active	2021-05-09	2021-05-09	(100) BMR	21.91	UNWIN	\$ 400	\$ 800	\$ -	\$ 40	\$ 40
336	168647	41P06A031	SCMC	Active	2021-03-23	2021-03-23	(100) BMR	21.89	DUFFERIN	\$ 400	\$ 800	\$ -	\$ -	\$ -
337	167257	41P06H324	SCMC	Active	2021-03-23	2021-03-23	(100) BMR	21.88	BROWNING	\$ 400	\$ 800	\$ -	\$ -	\$ -
338	173413	41P06A004	SCMC	Active	2021-03-23	2021-03-23	(100) BMR	21.88	BROWNING	\$ 400	\$ 800	\$ -	\$ -	\$ -
339	172871	41P06A045	BCMC	Active	2021-10-17	2021-10-17	(100) BMR	4.83	BROWNING,UNWIN	\$ 200	\$ 400	\$ -	\$ -	\$ -
340	172776	41P03J036	SCMC	Active	2021-01-16	2021-01-16	(100) BMR	21.92	UNWIN	\$ 400	\$ 800	\$ -	\$ 40	\$ 40
341	174028	41P06B360	BCMC	Active	2020-11-04	2020-11-04	(100) BMR	9.55	UNWIN	\$ 200	\$ 400	\$ -	\$ 20	\$ 20
342	174029	41P06B379	SCMC	Active	2020-11-04	2020-11-04	(100) BMR	21.91	UNWIN	\$ 400	\$ 800	\$ -	\$ 40	\$ 40
343	174332	41P06H309	SCMC	Active	2021-03-23	2021-03-23	(100) BMR	21.88	BROWNING,DUFFERIN	\$ 400	\$ 600	\$ -	\$ -	\$ -
344	175637	41P06A068	SCMC	Active	2021-03-23	2021-03-23	(100) BMR	21.89	UNWIN	\$ 400	\$ 800	\$ -	\$ -	\$ -
345	174793	41P06A344	SCMC	Active	2021-05-09	2021-05-09	(100) BMR	21.91	UNWIN	\$ 400	\$ 800	\$ -	\$ 103	\$ 103
346	174794	41P06A365	SCMC	Active	2021-05-09	2021-05-09	(100) BMR	21.91	UNWIN	\$ 400	\$ 800	\$ -	\$ 103	\$ 103
347	178020	41P03J038	SCMC	Active	2021-01-16	2021-01-16	(100) BMR	21.92	UNWIN	\$ 400	\$ 800	\$ -	\$ 40	\$ 40
348	176657	41P06B060	SCMC	Active	2021-02-14	2021-02-14	(100) BMR	21.89	BROWNING,UNWIN	\$ 400	\$ 600	\$ -	\$ 102	\$ 102
349	176658	41P06A064	BCMC	Active	2021-02-14	2021-02-14	(100) BMR	5.31	UNWIN	\$ 200	\$ 400	\$ -	\$ 20	\$ 20
350	176659	41P06A063	SCMC	Active	2021-02-14	2021-02-14	(100) BMR	21.89	UNWIN	\$ 400	\$ 800	\$ -	\$ 40	\$ 40
351	178734	41P06B337	BCMC	Active	2021-01-26	2021-01-26	(100) BMR	4.49	UNWIN	\$ 200	\$ 400	\$ -	\$ 20	\$ 20
352	179298	41P06B299	SCMC	Active	2021-01-26	2021-01-26	(100) BMR	21.91	UNWIN	\$ 400	\$ 800	\$ -	\$ 40	\$ 40
353	178765	41P03J160	SCMC	Active	2021-01-16	2021-01-16	(100) BMR	21.93	LEASK	\$ 400	\$ 800	\$ -	\$ 40	\$ 40
354	178766	41P03J176	SCMC	Active	2021-01-16	2021-01-16	(100) BMR	21.93	LEASK	\$ 400	\$ 800	\$ -	\$ 40	\$ 40
355	179350	41P06A145	SCMC	Active	2021-06-21	2021-06-21	(100) BMR	21.90	UNWIN	\$ 400	\$ 800	\$ -	\$ -	\$ -
356	179938	41P06A191	SCMC	Active	2021-04-10	2021-04-10	(100) BMR	21.90	STULL	\$ 400	\$ 800	\$ -	\$ -	\$ -
357	179939	41P06A209	SCMC	Active	2021-04-10	2021-04-10	(100) BMR	21.90	STULL,UNWIN	\$ 400	\$ 800	\$ -	\$ -	\$ -
358	179940	41P06A247	SCMC	Active	2021-04-10	2021-04-10	(100) BMR	21.90	UNWIN	\$ 400	\$ 800	\$ -	\$ -	\$ -
359	178628	41P03I001	SCMC	Active	2021-01-16	2021-01-16	(100) BMR	21.92	UNWIN	\$ 400	\$ 800	\$ -	\$ 40	\$ 40
360	182075	41P03I144	SCMC	Active	2021-02-14	2021-02-14	(100) BMR	21.93	LEASK	\$ 400	\$ 800	\$ -	\$ 103	\$ 103
361	182076	41P03I166	SCMC	Active	2021-02-14	2021-02-14	(100) BMR	21.93	LEASK	\$ 400	\$ 800	\$ -	\$ 103	\$ 103
362	178680	41P03J135	SCMC	Active	2021-01-16	2021-01-16	(100) BMR	21.93	LEASK	\$ 400	\$ 800	\$ -	\$ 40	\$ 40
363	185217	41P06A323	SCMC	Active	2021-05-09	2021-05-09	(100) BMR	21.91	UNWIN	\$ 400	\$ 800	\$ -	\$ 40	\$ 40
364	184811	41P03J017	SCMC	Active	2021-01-16	2021-01-16	(100) BMR	21.92	UNWIN	\$ 400	\$ 800	\$ -	\$ 40	\$ 40
365	184813	41P03J058	SCMC	Active	2021-01-16	2021-01-16	(100) BMR	21.92	UNWIN	\$ 400	\$ 800	\$ -	\$ 40	\$ 40
366	183397	41P06A084	BCMC	Active	2021-02-14	2021-02-14	(100) BMR	5.34	UNWIN	\$ 200	\$ 400	\$ -	\$ 20	\$ 20
367	183398	41P06B120	SCMC	Active	2021-02-14	2021-02-14	(100) BMR	21.89	UNWIN	\$ 400	\$ 600	\$ -	\$ 102	\$ 102
368	184424	41P06H386	SCMC	Active	2021-03-23	2021-03-23	(100) BMR	21.88	BROWNING	\$ 400	\$ 800	\$ -	\$ -	\$ -
369	184425	41P06A026	SCMC	Active	2021-03-23	2021-03-23	(100) BMR	21.89	BROWNING	\$ 400	\$ 800	\$ -	\$ -	\$ -

370	184469	41P06A109	SCMC	Active	2021-03-23	2021-03-23	(100) BMR	21.89	STULL,UNWIN	\$ 400	\$ 800	\$ -	\$ -	\$ -
371	185527	41P06B334	SCMC	Active	2021-01-26	2021-01-26	(100) BMR	21.91	UNWIN	\$ 400	\$ 800	\$ -	\$ 103	\$ 103
372	185992	41P06A267	SCMC	Active	2021-05-09	2021-05-09	(100) BMR	21.91	UNWIN	\$ 400	\$ 800	\$ -	\$ 103	\$ 103
373	186048	41P03J155	SCMC	Active	2021-01-16	2021-01-16	(100) BMR	21.93	LEASK	\$ 400	\$ 800	\$ -	\$ 40	\$ 40
374	188696	41P06A182	SCMC	Active	2021-04-10	2021-04-10	(100) BMR	21.90	UNWIN	\$ 400	\$ 800	\$ -	\$ -	\$ -
375	190905	41P03J104	SCMC	Active	2021-02-14	2021-02-14	(100) BMR	21.93	LEASK	\$ 400	\$ 800	\$ -	\$ -	\$ -
376	190793	41P06A084	BCMC	Active	2021-10-17	2021-10-17	(100) BMR	16.55	UNWIN	\$ 200	\$ 400	\$ -	\$ -	\$ -
377	195945	41P06H385	SCMC	Active	2021-03-23	2021-03-23	(100) BMR	21.88	BROWNING	\$ 400	\$ 800	\$ -	\$ -	\$ -
378	192405	41P06H308	SCMC	Active	2021-03-23	2021-03-23	(100) BMR	21.88	BROWNING	\$ 400	\$ 600	\$ -	\$ -	\$ -
379	196421	41P03J139	BCMC	Active	2020-11-04	2020-11-04	(100) BMR	20.34	LEASK	\$ 200	\$ 400	\$ -	\$ 20	\$ 20
380	196422	41P03J138	SCMC	Active	2020-11-04	2020-11-04	(100) BMR	21.93	LEASK	\$ 400	\$ 800	\$ -	\$ -	\$ -
381	200978	41P03J120	SCMC	Active	2021-01-16	2021-01-16	(100) BMR	21.93	LEASK	\$ 400	\$ 800	\$ -	\$ 40	\$ 40
382	202289	41P06B238	SCMC	Active	2021-01-26	2021-01-26	(100) BMR	21.90	UNWIN	\$ 400	\$ 400	\$ -	\$ 82	\$ 82
383	202335	41P03J034	SCMC	Active	2021-01-16	2021-01-16	(100) BMR	21.92	UNWIN	\$ 400	\$ 800	\$ -	\$ 40	\$ 40
384	202938	41P06A065	SCMC	Active	2021-10-17	2021-10-17	(100) BMR	21.89	UNWIN	\$ 400	\$ 800	\$ -	\$ -	\$ -
385	204344	41P06A327	SCMC	Active	2021-05-09	2021-05-09	(100) BMR	21.91	UNWIN	\$ 400	\$ 800	\$ -	\$ 103	\$ 103
386	211067	41P06A308	SCMC	Active	2021-05-09	2021-05-09	(100) BMR	21.91	UNWIN	\$ 400	\$ 800	\$ -	\$ 103	\$ 103
387	214478	41P06A005	SCMC	Active	2021-03-23	2021-03-23	(100) BMR	21.88	BROWNING	\$ 400	\$ 800	\$ -	\$ -	\$ -
388	215956	41P06A246	SCMC	Active	2021-04-10	2021-04-10	(100) BMR	21.90	UNWIN	\$ 400	\$ 800	\$ -	\$ -	\$ -
389	215273	41P06A229	SCMC	Active	2021-04-10	2021-04-10	(100) BMR	21.90	STULL,UNWIN	\$ 400	\$ 800	\$ -	\$ -	\$ -
390	216002	41P03J121	SCMC	Active	2021-01-16	2021-01-16	(100) BMR	21.93	LEASK	\$ 400	\$ 800	\$ -	\$ 40	\$ 40
391	217156	41P06A129	SCMC	Active	2021-03-23	2021-03-23	(100) BMR	21.89	STULL,UNWIN	\$ 400	\$ 800	\$ -	\$ -	\$ -
392	217455	41P06B333	SCMC	Active	2021-01-26	2021-01-26	(100) BMR	21.91	UNWIN	\$ 400	\$ 800	\$ -	\$ 103	\$ 103
393	217456	41P06B374	SCMC	Active	2021-01-26	2021-01-26	(100) BMR	21.91	UNWIN	\$ 400	\$ 800	\$ -	\$ 103	\$ 103
394	218097	41P03J016	SCMC	Active	2021-01-16	2021-01-16	(100) BMR	21.92	UNWIN	\$ 400	\$ 800	\$ -	\$ 40	\$ 40
395	225987	41P06B200	SCMC	Active	2021-04-10	2021-04-10	(100) BMR	21.90	UNWIN	\$ 400	\$ 400	\$ -	\$ -	\$ -
396	225328	41P03J139	BCMC	Active	2021-01-16	2021-01-16	(100) BMR	1.59	LEASK	\$ 200	\$ 400	\$ -	\$ 20	\$ 20
397	225329	41P03J158	BCMC	Active	2021-01-16	2021-01-16	(100) BMR	14.80	LEASK	\$ 200	\$ 400	\$ -	\$ 20	\$ 20
398	226064	41P03J145	SCMC	Active	2021-02-14	2021-02-14	(100) BMR	21.93	LEASK	\$ 400	\$ 800	\$ -	\$ -	\$ -
399	224576	41P03J018	SCMC	Active	2021-01-16	2021-01-16	(100) BMR	21.92	UNWIN	\$ 400	\$ 800	\$ -	\$ 40	\$ 40
400	225305	41P06B335	SCMC	Active	2021-01-26	2021-01-26	(100) BMR	21.91	UNWIN	\$ 400	\$ 800	\$ -	\$ 103	\$ 103
401	224577	41P03J077	BCMC	Active	2021-01-16	2021-01-16	(100) BMR	19.11	LEASK,UNWIN	\$ 200	\$ 400	\$ -	\$ 20	\$ 20
402	225041	41P06B260	SCMC	Active	2021-04-10	2021-04-10	(100) BMR	21.90	UNWIN	\$ 400	\$ 800	\$ -	\$ -	\$ -
403	227387	41P03J056	SCMC	Active	2021-01-16	2021-01-16	(100) BMR	21.92	UNWIN	\$ 400	\$ 800	\$ -	\$ 40	\$ 40
404	228603	41P06B359	SCMC	Active	2020-11-04	2020-11-04	(100) BMR	21.91	UNWIN	\$ 400	\$ 800	\$ -	\$ 40	\$ 40
405	228604	41P06B397	BCMC	Active	2020-11-04	2020-11-04	(100) BMR	12.35	UNWIN	\$ 200	\$ 400	\$ -	\$ 20	\$ 20
406	228754	41P03J065	SCMC	Active	2021-02-14	2021-02-14	(100) BMR	21.92	LEASK,UNWIN	\$ 400	\$ 800	\$ -	\$ -	\$ -
407	228755	41P03J064	SCMC	Active	2021-02-14	2021-02-14	(100) BMR	21.92	LEASK,UNWIN	\$ 400	\$ 800	\$ -	\$ -	\$ -
408	228048	41P06A345	SCMC	Active	2021-05-09	2021-05-09	(100) BMR	21.91	UNWIN	\$ 400	\$ 800	\$ -	\$ 103	\$ 103
409	231260	41P06A082	SCMC	Active	2021-02-14	2021-02-14	(100) BMR	21.89	UNWIN	\$ 400	\$ 800	\$ -	\$ -	\$ -
410	231261	41P06A122	SCMC	Active	2021-02-14	2021-02-14	(100) BMR	21.89	UNWIN	\$ 400	\$ 800	\$ -	\$ -	\$ -
411	230060	41P06A285	SCMC	Active	2021-05-09	2021-05-09	(100) BMR	21.91	UNWIN	\$ 400	\$ 800	\$ -	\$ 40	\$ 40
412	235198	41P06A169	SCMC	Active	2021-03-23	2021-03-23	(100) BMR	21.90	STULL,UNWIN	\$ 400	\$ 800	\$ -	\$ -	\$ -
413	235109	41P06A341	SCMC	Active	2021-04-10	2021-04-10	(100) BMR	21.91	UNWIN	\$ 400	\$ 800	\$ -	\$ -	\$ -
414	234497	41P06A185	BCMC	Active	2021-04-10	2021-04-10	(100) BMR	5.80	UNWIN	\$ 200	\$ 400	\$ -	\$ -	\$ -
415	234498	41P06A264	SCMC	Active	2021-05-09	2021-05-09	(100) BMR	21.91	UNWIN	\$ 400	\$ 800	\$ -	\$ 40	\$ 40
416	233822	41P06A208	SCMC	Active	2021-04-10	2021-04-10	(100) BMR	21.90	UNWIN	\$ 400	\$ 800	\$ -	\$ -	\$ -

417	233823	41P06A250	SCMC	Active	2021-04-10	2021-04-10	(100) BMR	21.90	STULL	\$ 400	\$ 800	\$ -	\$ 1	\$ 1
418	233824	41P06A269	SCMC	Active	2021-05-09	2021-05-09	(100) BMR	21.91	STULL,UNWIN	\$ 400	\$ 800	\$ -	\$ 103	\$ 103
419	236651	41P06B400	BCMC	Active	2021-04-10	2021-04-10	(100) BMR	16.24	UNWIN	\$ 200	\$ 400	\$ -	\$ -	\$ -
420	240938	41P06A143	SCMC	Active	2021-02-14	2021-02-14	(100) BMR	21.90	UNWIN	\$ 400	\$ 800	\$ -	\$ -	\$ -
421	240939	41P06A142	SCMC	Active	2021-02-14	2021-02-14	(100) BMR	21.90	UNWIN	\$ 400	\$ 800	\$ -	\$ -	\$ -
422	238859	41P03J054	SCMC	Active	2021-01-16	2021-01-16	(100) BMR	21.92	UNWIN	\$ 400	\$ 800	\$ -	\$ 40	\$ 40
423	239610	41P03I067	SCMC	Active	2021-02-14	2021-02-14	(100) BMR	21.92	LEASK,UNWIN	\$ 400	\$ 800	\$ -	\$ -	\$ -
424	244412	41P06H303	SCMC	Active	2021-02-14	2021-02-14	(100) BMR	21.88	BROWNING	\$ 400	\$ 600	\$ -	\$ -	\$ -
425	244413	41P06H323	SCMC	Active	2021-02-14	2021-02-14	(100) BMR	21.88	BROWNING	\$ 400	\$ 800	\$ -	\$ 103	\$ 103
426	240764	41P06B337	BCMC	Active	2020-11-04	2020-11-04	(100) BMR	17.42	UNWIN	\$ 200	\$ 400	\$ -	\$ 20	\$ 20
427	240765	41P06B380	BCMC	Active	2020-11-04	2020-11-04	(100) BMR	9.49	UNWIN	\$ 200	\$ 400	\$ -	\$ 20	\$ 20
428	243384	41P06A121	SCMC	Active	2021-02-14	2021-02-14	(100) BMR	21.89	UNWIN	\$ 400	\$ 800	\$ -	\$ -	\$ -
429	243142	41P06A046	BCMC	Active	2021-03-23	2021-03-23	(100) BMR	17.03	BROWNING,UNWIN	\$ 200	\$ 400	\$ -	\$ -	\$ -
430	243706	41P06A090	SCMC	Active	2021-03-23	2021-03-23	(100) BMR	21.89	STULL	\$ 400	\$ 800	\$ -	\$ -	\$ -
431	246665	41P06A266	SCMC	Active	2021-05-09	2021-05-09	(100) BMR	21.91	UNWIN	\$ 400	\$ 800	\$ -	\$ 103	\$ 103
432	246987	41P06B040	SCMC	Active	2021-02-14	2021-02-14	(100) BMR	21.89	BROWNING	\$ 400	\$ 600	\$ -	\$ 102	\$ 102
433	245436	41P03I062	SCMC	Active	2021-01-16	2021-01-16	(100) BMR	21.92	LEASK,UNWIN	\$ 400	\$ 800	\$ -	\$ 40	\$ 40
434	249664	41P06A369	SCMC	Active	2021-05-09	2021-05-09	(100) BMR	21.91	STULL,UNWIN	\$ 400	\$ 800	\$ -	\$ 103	\$ 103
435	245474	41P06B295	SCMC	Active	2021-01-26	2021-01-26	(100) BMR	21.91	UNWIN	\$ 400	\$ 800	\$ -	\$ 103	\$ 103
436	249083	41P06H348	SCMC	Active	2021-03-23	2021-03-23	(100) BMR	21.88	BROWNING	\$ 400	\$ 800	\$ -	\$ -	\$ -
437	248978	41P06A330	SCMC	Active	2021-05-09	2021-05-09	(100) BMR	21.91	STULL	\$ 400	\$ 800	\$ -	\$ 103	\$ 103
438	246963	41P06A047	BCMC	Active	2021-10-17	2021-10-17	(100) BMR	3.07	BROWNING,UNWIN	\$ 200	\$ 400	\$ -	\$ -	\$ -
439	247588	41P03I087	SCMC	Active	2021-02-14	2021-02-14	(100) BMR	21.92	LEASK	\$ 400	\$ 800	\$ -	\$ 103	\$ 103
440	250225	41P06A042	SCMC	Active	2021-02-14	2021-02-14	(100) BMR	21.89	BROWNING,UNWIN	\$ 400	\$ 800	\$ -	\$ 103	\$ 103
441	254132	41P03I004	SCMC	Active	2021-02-14	2021-02-14	(100) BMR	21.92	UNWIN	\$ 400	\$ 800	\$ -	\$ -	\$ -
442	251049	41P03J136	BCMC	Active	2020-11-04	2020-11-04	(100) BMR	8.33	LEASK	\$ 200	\$ 400	\$ -	\$ 20	\$ 20
443	253418	41P06A343	SCMC	Active	2021-05-09	2021-05-09	(100) BMR	21.91	UNWIN	\$ 400	\$ 800	\$ -	\$ 103	\$ 103
444	255868	41P06H326	SCMC	Active	2021-03-23	2021-03-23	(100) BMR	21.88	BROWNING	\$ 400	\$ 800	\$ -	\$ -	\$ -
445	252870	41P06B318	SCMC	Active	2021-01-26	2021-01-26	(100) BMR	21.91	UNWIN	\$ 400	\$ 800	\$ -	\$ 40	\$ 40
446	260574	41P06H310	SCMC	Active	2021-03-23	2021-03-23	(100) BMR	21.88	DUFFERIN	\$ 400	\$ 600	\$ -	\$ -	\$ -
447	260398	41P06A301	SCMC	Active	2021-04-10	2021-04-10	(100) BMR	21.91	UNWIN	\$ 400	\$ 800	\$ -	\$ -	\$ -
448	263078	41P03J116	BCMC	Active	2020-11-04	2020-11-04	(100) BMR	8.37	LEASK	\$ 200	\$ 400	\$ -	\$ 20	\$ 20
449	263079	41P03J157	BCMC	Active	2020-11-04	2020-11-04	(100) BMR	7.17	LEASK	\$ 200	\$ 400	\$ -	\$ 20	\$ 20
450	269967	41P06A071	SCMC	Active	2021-03-23	2021-03-23	(100) BMR	21.89	STULL	\$ 400	\$ 800	\$ -	\$ -	\$ -
451	269968	41P06A087	BCMC	Active	2021-03-23	2021-03-23	(100) BMR	8.08	UNWIN	\$ 200	\$ 400	\$ -	\$ -	\$ -
452	269915	41P06A007	SCMC	Active	2021-03-23	2021-03-23	(100) BMR	21.88	BROWNING	\$ 400	\$ 800	\$ -	\$ -	\$ -
453	272377	41P06A128	SCMC	Active	2021-03-23	2021-03-23	(100) BMR	21.89	UNWIN	\$ 400	\$ 800	\$ -	\$ 64	\$ 64
454	270674	41P06H341	SCMC	Active	2021-02-14	2021-02-14	(100) BMR	21.88	BROWNING	\$ 400	\$ 800	\$ -	\$ -	\$ -
455	272397	41P06A149	SCMC	Active	2021-03-23	2021-03-23	(100) BMR	21.90	STULL,UNWIN	\$ 400	\$ 800	\$ -	\$ -	\$ -
456	271713	41P06A190	SCMC	Active	2021-04-10	2021-04-10	(100) BMR	21.90	STULL	\$ 400	\$ 800	\$ -	\$ -	\$ -
457	270465	41P06A382	SCMC	Active	2021-04-10	2021-04-10	(100) BMR	21.92	UNWIN	\$ 400	\$ 800	\$ -	\$ -	\$ -
458	277734	41P06H307	SCMC	Active	2021-03-23	2021-03-23	(100) BMR	21.88	BROWNING	\$ 400	\$ 600	\$ -	\$ -	\$ -
459	277735	41P06H349	SCMC	Active	2021-03-23	2021-03-23	(100) BMR	21.88	BROWNING,DUFFERIN	\$ 400	\$ 800	\$ -	\$ -	\$ -
460	277736	41P06H347	SCMC	Active	2021-03-23	2021-03-23	(100) BMR	21.88	BROWNING	\$ 400	\$ 800	\$ -	\$ -	\$ -
461	280067	41P03J099	BCMC	Active	2020-11-04	2020-11-04	(100) BMR	20.27	LEASK	\$ 200	\$ 400	\$ -	\$ 20	\$ 20
462	279255	41P06B080	SCMC	Active	2021-02-14	2021-02-14	(100) BMR	21.89	UNWIN	\$ 400	\$ 600	\$ -	\$ -	\$ -
463	283079	41P06A383	SCMC	Active	2021-05-09	2021-05-09	(100) BMR	21.92	UNWIN	\$ 400	\$ 800	\$ -	\$ 103	\$ 103

464	284042	41P06B356	SCMC	Active	2021-01-26	2021-01-26	(100) BMR	21.91	UNWIN	\$ 400	\$ 800	\$ -	\$ 103	\$ 103
465	282623	41P03I141	SCMC	Active	2021-01-16	2021-01-16	(100) BMR	21.93	LEASE	\$ 400	\$ 800	\$ -	\$ 40	\$ 40
466	282645	41P03I025	SCMC	Active	2021-02-14	2021-02-14	(100) BMR	21.92	UNWIN	\$ 400	\$ 800	\$ -	\$ -	\$ -
467	286112	41P06A064	BCMC	Active	2021-10-17	2021-10-17	(100) BMR	16.58	UNWIN	\$ 200	\$ 400	\$ -	\$ -	\$ -
468	286837	41P06H393	SCMC	Active	2021-06-13	2021-06-13	(100) BMR	21.88	DUFFERIN	\$ 400	\$ 800	\$ -	\$ 424	\$ 424
469	290661	41P03I162	SCMC	Active	2021-01-16	2021-01-16	(100) BMR	21.93	LEASE	\$ 400	\$ 800	\$ -	\$ 40	\$ 40
470	290662	41P03I161	SCMC	Active	2021-01-16	2021-01-16	(100) BMR	21.93	LEASE	\$ 400	\$ 800	\$ -	\$ 40	\$ 40
471	292704	41P03I125	SCMC	Active	2021-02-14	2021-02-14	(100) BMR	21.93	LEASE	\$ 400	\$ 800	\$ -	\$ -	\$ -
472	294119	41P06A044	BCMC	Active	2021-10-17	2021-10-17	(100) BMR	3.65	BROWNING,UNWIN	\$ 200	\$ 400	\$ -	\$ -	\$ -
473	294120	41P06A106	SCMC	Active	2021-10-17	2021-10-17	(100) BMR	21.89	UNWIN	\$ 400	\$ 800	\$ -	\$ -	\$ -
474	297944	41P06A083	SCMC	Active	2021-02-14	2021-02-14	(100) BMR	21.89	UNWIN	\$ 400	\$ 800	\$ -	\$ -	\$ -
475	294157	41P06B020	SCMC	Active	2021-02-14	2021-02-14	(100) BMR	21.88	BROWNING	\$ 400	\$ 600	\$ -	\$ -	\$ -
476	294738	41P03I106	SCMC	Active	2021-02-14	2021-02-14	(100) BMR	21.93	LEASE	\$ 400	\$ 800	\$ -	\$ -	\$ -
477	295318	41P06B400	BCMC	Active	2020-11-04	2020-11-04	(100) BMR	5.68	UNWIN	\$ 200	\$ 400	\$ -	\$ 20	\$ 20
478	296106	41P06A289	SCMC	Active	2021-05-09	2021-05-09	(100) BMR	21.91	STULL,UNWIN	\$ 400	\$ 800	\$ -	\$ 103	\$ 103
479	298138	41P03J079	BCMC	Active	2020-11-04	2020-11-04	(100) BMR	2.67	LEASE,UNWIN	\$ 200	\$ 400	\$ -	\$ 20	\$ 20
480	298139	41P03J097	SCMC	Active	2020-11-04	2020-11-04	(100) BMR	21.92	LEASE	\$ 400	\$ 800	\$ -	\$ 40	\$ 40
481	299192	41P06A283	SCMC	Active	2021-05-09	2021-05-09	(100) BMR	21.91	UNWIN	\$ 400	\$ 800	\$ -	\$ 40	\$ 40
482	300394	41P06A108	SCMC	Active	2021-03-23	2021-03-23	(100) BMR	21.89	UNWIN	\$ 400	\$ 800	\$ -	\$ -	\$ -
483	302628	41P06A014	SCMC	Active	2021-06-13	2021-06-13	(100) BMR	21.88	DUFFERIN	\$ 400	\$ 800	\$ -	\$ 464	\$ 464
484	304857	41P03I147	SCMC	Active	2021-02-14	2021-02-14	(100) BMR	21.93	LEASE	\$ 400	\$ 800	\$ -	\$ -	\$ -
485	301094	41P06H322	SCMC	Active	2021-02-14	2021-02-14	(100) BMR	21.88	BROWNING	\$ 400	\$ 800	\$ -	\$ -	\$ -
486	306793	41P06A046	BCMC	Active	2021-10-17	2021-10-17	(100) BMR	4.86	BROWNING,UNWIN	\$ 200	\$ 400	\$ -	\$ -	\$ -
487	305524	41P03I101	SCMC	Active	2021-01-16	2021-01-16	(100) BMR	21.93	LEASE	\$ 400	\$ 800	\$ -	\$ 40	\$ 40
488	308814	41P06A307	SCMC	Active	2021-05-09	2021-05-09	(100) BMR	21.91	UNWIN	\$ 400	\$ 800	\$ -	\$ 103	\$ 103
489	308259	41P06A366	SCMC	Active	2021-05-09	2021-05-09	(100) BMR	21.91	UNWIN	\$ 400	\$ 800	\$ -	\$ 103	\$ 103
490	306833	41P06H383	SCMC	Active	2021-02-14	2021-02-14	(100) BMR	21.88	BROWNING	\$ 400	\$ 800	\$ -	\$ -	\$ -
491	306834	41P06A002	SCMC	Active	2021-02-14	2021-02-14	(100) BMR	21.88	BROWNING	\$ 400	\$ 800	\$ -	\$ -	\$ -
492	306835	41P06A023	SCMC	Active	2021-02-14	2021-02-14	(100) BMR	21.89	BROWNING	\$ 400	\$ 800	\$ -	\$ -	\$ -
493	305253	41P06A202	SCMC	Active	2021-04-10	2021-04-10	(100) BMR	21.90	UNWIN	\$ 400	\$ 800	\$ -	\$ -	\$ -
494	310096	41P06A062	SCMC	Active	2021-02-14	2021-02-14	(100) BMR	21.89	UNWIN	\$ 400	\$ 800	\$ -	\$ -	\$ -
495	312946	41P03J055	SCMC	Active	2021-01-16	2021-01-16	(100) BMR	21.92	UNWIN	\$ 400	\$ 800	\$ -	\$ 40	\$ 40
496	313524	41P06A086	SCMC	Active	2021-10-17	2021-10-17	(100) BMR	21.89	UNWIN	\$ 400	\$ 800	\$ -	\$ -	\$ -
497	313525	41P06A105	SCMC	Active	2021-10-17	2021-10-17	(100) BMR	21.89	UNWIN	\$ 400	\$ 800	\$ -	\$ 690	\$ 690
498	313550	41P06H382	SCMC	Active	2021-02-14	2021-02-14	(100) BMR	21.88	BROWNING	\$ 400	\$ 800	\$ -	\$ -	\$ -
499	318163	41P03J074	SCMC	Active	2021-01-16	2021-01-16	(100) BMR	21.92	LEASE,UNWIN	\$ 400	\$ 800	\$ -	\$ 40	\$ 40
500	317499	41P03J020	SCMC	Active	2021-01-16	2021-01-16	(100) BMR	21.92	UNWIN	\$ 400	\$ 800	\$ -	\$ 40	\$ 40
501	316190	41P06A305	SCMC	Active	2021-05-09	2021-05-09	(100) BMR	21.91	UNWIN	\$ 400	\$ 800	\$ -	\$ 40	\$ 40
502	319816	41P06A028	SCMC	Active	2021-03-23	2021-03-23	(100) BMR	21.89	BROWNING	\$ 400	\$ 800	\$ -	\$ -	\$ -
503	321752	41P06A223	SCMC	Active	2021-04-10	2021-04-10	(100) BMR	21.90	UNWIN	\$ 400	\$ 800	\$ -	\$ -	\$ -
504	325082	41P06B340	BCMC	Active	2020-11-04	2020-11-04	(100) BMR	8.20	UNWIN	\$ 200	\$ 400	\$ -	\$ 20	\$ 20
505	329864	41P06A027	SCMC	Active	2021-03-23	2021-03-23	(100) BMR	21.89	BROWNING	\$ 400	\$ 800	\$ -	\$ -	\$ -
506	329921	41P06A050	SCMC	Active	2021-03-23	2021-03-23	(100) BMR	21.89	DUFFERIN,STULL	\$ 400	\$ 800	\$ -	\$ -	\$ -
507	336348	41P06A324	SCMC	Active	2021-05-09	2021-05-09	(100) BMR	21.91	UNWIN	\$ 400	\$ 800	\$ -	\$ 40	\$ 40
508	336349	41P06A347	SCMC	Active	2021-05-09	2021-05-09	(100) BMR	21.91	UNWIN	\$ 400	\$ 800	\$ -	\$ 103	\$ 103
509	339303	41P06A067	BCMC	Active	2021-03-23	2021-03-23	(100) BMR	8.10	UNWIN	\$ 200	\$ 400	\$ -	\$ -	\$ -
510	336407	41P06A287	SCMC	Active	2021-05-09	2021-05-09	(100) BMR	21.91	UNWIN	\$ 400	\$ 800	\$ -	\$ 103	\$ 103

511	335971	41P06H368	SCMC	Active	2021-03-23	2021-03-23	(100) BMR	21.88	BROWNING	\$ 400	\$ 800	\$ -	\$ -	\$ -
512	344164	41P06A241	SCMC	Active	2021-04-10	2021-04-10	(100) BMR	21.90	UNWIN	\$ 400	\$ 800	\$ -	\$ -	\$ -
513	343603	41P03I167	SCMC	Active	2021-02-14	2021-02-14	(100) BMR	21.93	LEASK	\$ 400	\$ 800	\$ -	\$ -	\$ -
514	342201	41P06B360	BCMC	Active	2021-04-10	2021-04-10	(100) BMR	12.37	UNWIN	\$ 200	\$ 400	\$ -	\$ -	\$ -
515	342985	41P06B353	SCMC	Active	2021-01-26	2021-01-26	(100) BMR	21.91	UNWIN	\$ 400	\$ 800	\$ -	\$ 103	\$ 103
516	342986	41P06B395	SCMC	Active	2021-01-26	2021-01-26	(100) BMR	21.92	UNWIN	\$ 400	\$ 800	\$ -	\$ 103	\$ 103
517	342987	41P06B394	SCMC	Active	2021-01-26	2021-01-26	(100) BMR	21.92	UNWIN	\$ 400	\$ 800	\$ -	\$ 103	\$ 103
518	331146	41P06H344	SCMC	Active	2021-03-23	2021-03-23	(100) BMR	21.88	BROWNING	\$ 400	\$ 800	\$ -	\$ -	\$ -
519	333355	41P06A010	SCMC	Active	2021-03-23	2021-03-23	(100) BMR	21.88	DUFFERIN	\$ 400	\$ 800	\$ -	\$ -	\$ -
520	332639	41P06H301	SCMC	Active	2021-02-14	2021-02-14	(100) BMR	21.88	BROWNING	\$ 400	\$ 600	\$ -	\$ -	\$ -
521	332640	41P06H362	SCMC	Active	2021-02-14	2021-02-14	(100) BMR	21.88	BROWNING	\$ 400	\$ 800	\$ -	\$ -	\$ -
522	503580	41P06H252	SCMC	Active	2021-04-10	2021-04-10	(100) BMR	21.87	DUFFERIN	\$ 400	\$ 400	\$ -	\$ 23	\$ 23
523	503584	41P06H292	SCMC	Active	2021-04-10	2021-04-10	(100) BMR	21.87	DUFFERIN	\$ 400	\$ 400	\$ -	\$ 23	\$ 23
524	503585	41P06H293	SCMC	Active	2021-04-10	2021-04-10	(100) BMR	21.87	DUFFERIN	\$ 400	\$ 400	\$ -	\$ 23	\$ 23
525	503586	41P06H312	SCMC	Active	2021-04-10	2021-04-10	(100) BMR	21.88	DUFFERIN	\$ 400	\$ 400	\$ -	\$ 23	\$ 23
526	503587	41P06H313	SCMC	Active	2021-04-10	2021-04-10	(100) BMR	21.88	DUFFERIN	\$ 400	\$ 400	\$ -	\$ 23	\$ 23
527	503590	41P06H334	SCMC	Active	2021-04-10	2021-04-10	(100) BMR	21.88	DUFFERIN	\$ 400	\$ 400	\$ -	\$ 23	\$ 23
528	503591	41P06H352	SCMC	Active	2021-04-10	2021-04-10	(100) BMR	21.88	DUFFERIN	\$ 400	\$ 400	\$ -	\$ 23	\$ 23
529	340179	41P06A282	SCMC	Active	2021-04-10	2021-04-10	(100) BMR	21.91	UNWIN	\$ 400	\$ 800	\$ -	\$ -	\$ -
530	337062	41P06A286	SCMC	Active	2021-05-09	2021-05-09	(100) BMR	21.91	UNWIN	\$ 400	\$ 800	\$ -	\$ 102	\$ 102
531	100068	41P06A013	SCMC	Active	2021-06-13	2021-06-13	(100) BMR	21.88	DUFFERIN	\$ 400	\$ 800	\$ -	\$ 422	\$ 422
532	106854	41P06B277	SCMC	Active	2021-01-26	2021-01-26	(100) BMR	21.91	UNWIN	\$ 400	\$ 400	\$ -	\$ 20	\$ 20
533	106855	41P06B298	SCMC	Active	2021-01-26	2021-01-26	(100) BMR	21.91	UNWIN	\$ 400	\$ 800	\$ -	\$ 40	\$ 40
534	104325	41P06A187	BCMC	Active	2021-04-10	2021-04-10	(100) BMR	11.69	UNWIN	\$ 200	\$ 400	\$ -	\$ -	\$ -
535	104326	41P06A231	SCMC	Active	2021-04-10	2021-04-10	(100) BMR	21.90	STULL	\$ 400	\$ 800	\$ -	\$ -	\$ -
536	104327	41P06A251	SCMC	Active	2021-04-10	2021-04-10	(100) BMR	21.90	STULL	\$ 400	\$ 800	\$ -	\$ -	\$ -
537	104749	41P06B339	BCMC	Active	2020-11-04	2020-11-04	(100) BMR	18.68	UNWIN	\$ 200	\$ 400	\$ -	\$ 20	\$ 20
538	108088	41P03I082	SCMC	Active	2021-01-16	2021-01-16	(100) BMR	21.92	LEASK	\$ 400	\$ 800	\$ -	\$ 40	\$ 40



ALS Canada Ltd.  
 2103 Dollarton Hwy  
 North Vancouver BC V7H 0A7  
 Phone: +1 604 984 0221 Fax: +1 604 984 0218  
 www.alsglobal.com/geochemistry

To: BATTERY MINERAL RESOURCES CORP.  
 THE PACIFIC BUILDING  
 SUITE 400, 744 WEST HASTINGS STREET  
 VANCOUVER BC V6C 1A5

Page: 1  
 Total # Pages: 2 (A - D)  
 Plus Appendix Pages  
 Finalized Date: 10-NOV-2020  
 This copy reported on  
 11-NOV-2020  
 Account: BMRPLLBW

**CERTIFICATE SD20222348**

Project: WHITE LAKE 2020 RECON

This report is for 5 Rock samples submitted to our lab in Sudbury, ON, Canada on 2-OCT-2020.

The following have access to data associated with this certificate:

PETER DOYLE FRANK PLOEGER	MIKE HENDRICKSON MERCEDES RICH	SEAN HICKS ANDREW SALERNO
------------------------------	-----------------------------------	------------------------------

SAMPLE PREPARATION	
ALS CODE	DESCRIPTION
WEI-21	Received Sample Weight
CRU-QC	Crushing QC Test
PUL-QC	Pulverizing QC Test
LOG-22	Sample login - Rcd w/o BarCode
CRU-31	Fine crushing - 70% <2mm
SPL-21	Split sample - riffle splitter
PUL-31	Pulverize up to 250g 85% <75 um

ANALYTICAL PROCEDURES		
ALS CODE	DESCRIPTION	
ME-MS61	48 element four acid ICP-MS	
ME-OG62	Ore Grade Elements - Four Acid	ICP-AES
Co-OG62	Ore Grade Co - Four Acid	
As-OG62	Ore Grade As - Four Acid	
Au-ICP21	Au 30g FA ICP-AES Finish	ICP-AES

This is the Final Report and supersedes any preliminary report with this certificate number. Results apply to samples as submitted. All pages of this report have been checked and approved for release.

\*\*\*\*\* See Appendix Page for comments regarding this certificate \*\*\*\*\*

**Signature:**   
 Saa Traxler, General Manager, North Vancouver



ALS Canada Ltd.  
 2103 Dollarton Hwy  
 North Vancouver BC V7H 0A7  
 Phone: +1 604 984 0221 Fax: +1 604 984 0218  
 www.alsglobal.com/geochemistry

To: BATTERY MINERAL RESOURCES CORP.  
 THE PACIFIC BUILDING  
 SUITE 400, 744 WEST HASTINGS STREET  
 VANCOUVER BC V6C 1A5

Page: 2 - A  
 Total # Pages: 2 (A - D)  
 Plus Appendix Pages  
 Finalized Date: 10-NOV-2020  
 Account: BMRPLLW

Project: WHITE LAKE 2020 RECON

**CERTIFICATE OF ANALYSIS SD20222348**

Sample Description	Method Analyte Units LOD	WEI-21	ME-MS61	ME-MS61	ME-MS61	ME-MS61	ME-MS61	ME-MS61	ME-MS61	ME-MS61	ME-MS61	ME-MS61	ME-MS61	ME-MS61	ME-MS61	
		Recvd Wt. kg	Ag ppm	Al %	As ppm	Ba ppm	Be ppm	Bi ppm	Ca %	Cd ppm	Ce ppm	Co ppm	Cr ppm	Cs ppm	Cu ppm	Fe %
		0.02	0.01	0.01	0.2	10	0.05	0.01	0.01	0.02	0.01	0.1	1	0.05	0.2	0.01
R1155		2.22	0.18	1.81	50.4	170	0.99	1.26	14.90	0.02	61.3	40.1	7	0.19	49.4	2.66
R1156		1.82	1.21	5.13	7500	120	2.94	524	6.35	0.14	19.60	3520	54	0.31	46.2	2.60
R1157		1.75	1.47	5.79	>10000	110	1.56	375	4.14	0.10	21.5	>10000	41	0.29	61.3	3.57
R1158		1.61	0.60	1.69	135.0	20	0.66	1700	2.32	0.07	2.91	79.8	68	0.40	886	2.36
R1137		1.11	0.51	4.66	4590	50	1.76	24.4	1.88	0.06	21.3	3440	45	0.29	67.7	3.26

\*\*\*\*\* See Appendix Page for comments regarding this certificate \*\*\*\*\*





ALS Canada Ltd.  
 2103 Dollarton Hwy  
 North Vancouver BC V7H 0A7  
 Phone: +1 604 984 0221 Fax: +1 604 984 0218  
 www.alsglobal.com/geochemistry

To: BATTERY MINERAL RESOURCES CORP.  
 THE PACIFIC BUILDING  
 SUITE 400, 744 WEST HASTINGS STREET  
 VANCOUVER BC V6C 1A5

Page: 2 - B  
 Total # Pages: 2 (A - D)  
 Plus Appendix Pages  
 Finalized Date: 10-NOV-2020  
 Account: BMRPLLW

Project: WHITE LAKE 2020 RECON

**CERTIFICATE OF ANALYSIS SD20222348**

Sample Description	Method	ME-MS61	ME-MS61	ME-MS61	ME-MS61	ME-MS61	ME-MS61	ME-MS61	ME-MS61	ME-MS61	ME-MS61	ME-MS61	ME-MS61	ME-MS61	ME-MS61	
	Analyte	Ga	Ge	Hf	In	K	La	Li	Mg	Mn	Mo	Na	Nb	Ni	P	Pb
Units		ppm	ppm	ppm	ppm	%	ppm	ppm	%	ppm	ppm	%	ppm	ppm	ppm	ppm
LOD		0.05	0.05	0.1	0.005	0.01	0.5	0.2	0.01	5	0.05	0.01	0.1	0.2	10	0.5
R1155		6.44	0.09	1.1	0.726	0.78	27.9	5.9	2.52	4640	1.51	0.71	1.3	8.2	100	3.9
R1156		10.70	0.06	2.4	0.268	1.86	7.5	15.9	0.41	1240	8.48	2.62	3.3	712	250	93.3
R1157		13.10	0.09	2.5	0.237	1.74	8.9	24.0	0.70	1200	7.47	2.83	3.5	2150	260	62.1
R1158		6.27	<0.05	0.2	0.038	0.28	1.1	25.0	0.56	493	2.48	0.53	0.3	56.9	50	937
R1137		15.25	0.05	2.4	0.043	0.37	10.1	28.1	0.95	343	16.85	2.49	3.8	196.0	350	33.4

\*\*\*\*\* See Appendix Page for comments regarding this certificate \*\*\*\*\*



ALS Canada Ltd.  
 2103 Dollarton Hwy  
 North Vancouver BC V7H 0A7  
 Phone: +1 604 984 0221 Fax: +1 604 984 0218  
 www.alsglobal.com/geochemistry

To: BATTERY MINERAL RESOURCES CORP.  
 THE PACIFIC BUILDING  
 SUITE 400, 744 WEST HASTINGS STREET  
 VANCOUVER BC V6C 1A5

Page: 2 - C  
 Total # Pages: 2 (A - D)  
 Plus Appendix Pages  
 Finalized Date: 10-NOV-2020  
 Account: BMRPLLW

Project: WHITE LAKE 2020 RECON

**CERTIFICATE OF ANALYSIS SD20222348**

Sample Description	Method Analyte Units LOD	ME-MS61	ME-MS61	ME-MS61	ME-MS61	ME-MS61	ME-MS61	ME-MS61	ME-MS61	ME-MS61	ME-MS61	ME-MS61	ME-MS61	ME-MS61	ME-MS61	
		Rb	Re	S	Sb	Sc	Se	Sn	Sr	Ta	Te	Th	Ti	Tl	U	V
		ppm	ppm	%	ppm	ppm	ppm	ppm	ppm	ppm	ppm	ppm	%	ppm	ppm	ppm
		0.1	0.002	0.01	0.05	0.1	1	0.2	0.2	0.05	0.05	0.01	0.005	0.02	0.1	1
R1155		22.1	<0.002	0.01	0.58	15.8	1	0.4	51.3	0.12	<0.05	1.84	0.111	0.10	0.7	69
R1156		49.8	0.008	0.14	7.32	22.3	1	0.8	54.6	0.27	0.05	4.12	0.310	0.25	8.3	142
R1157		43.9	0.043	1.00	10.25	23.0	2	0.9	44.6	0.29	0.10	4.36	0.315	0.23	10.1	150
R1158		9.4	<0.002	0.11	2.68	5.5	4	0.2	17.7	<0.05	<0.05	0.26	0.057	0.06	0.2	48
R1137		12.4	0.002	0.27	1.56	15.2	2	0.8	28.7	0.31	0.16	6.59	0.334	0.07	4.5	109

\*\*\*\*\* See Appendix Page for comments regarding this certificate \*\*\*\*\*



ALS Canada Ltd.  
 2103 Dollarton Hwy  
 North Vancouver BC V7H 0A7  
 Phone: +1 604 984 0221 Fax: +1 604 984 0218  
 www.alsglobal.com/geochemistry

To: BATTERY MINERAL RESOURCES CORP.  
 THE PACIFIC BUILDING  
 SUITE 400, 744 WEST HASTINGS STREET  
 VANCOUVER BC V6C 1A5

Page: 2 - D  
 Total # Pages: 2 (A - D)  
 Plus Appendix Pages  
 Finalized Date: 10-NOV-2020  
 Account: BMRPLLW

Project: WHITE LAKE 2020 RECON

**CERTIFICATE OF ANALYSIS SD20222348**

Sample Description	Method Analyte Units LOD	ME-MS61 W ppm 0.1	ME-MS61 Y ppm 0.1	ME-MS61 Zn ppm 2	ME-MS61 Zr ppm 0.5	As-OG62 As % 0.001	Co-OG62 Co % 0.0005	Au-ICP21 Au ppm 0.001	CRU-QC Pass2mm % 0.01	PUL-QC Pass75um % 0.01
R1155		0.4	42.8	28	44.8			<0.001	77.0	93.5
R1156		0.6	22.8	27	93.5			0.079		
R1157		0.6	20.3	47	98.1	4.10	2.14	0.199		
R1158		0.1	3.2	26	8.0			0.061		
R1137		0.9	47.5	37	99.1			0.094		

\*\*\*\*\* See Appendix Page for comments regarding this certificate \*\*\*\*\*



ALS Canada Ltd.  
 2103 Dollarton Hwy  
 North Vancouver BC V7H 0A7  
 Phone: +1 604 984 0221 Fax: +1 604 984 0218  
 www.alsglobal.com/geochemistry

To: BATTERY MINERAL RESOURCES CORP.  
 THE PACIFIC BUILDING  
 SUITE 400, 744 WEST HASTINGS STREET  
 VANCOUVER BC V6C 1A5

Page: Appendix 1  
 Total # Appendix Pages: 1  
 Finalized Date: 10-NOV-2020  
 Account: BMRPLLBW

Project: WHITE LAKE 2020 RECON

<b>CERTIFICATE OF ANALYSIS SD20222348</b>
---

	<b>CERTIFICATE COMMENTS</b>												
Applies to Method:	<p style="text-align: center;"><b>ANALYTICAL COMMENTS</b></p> <p>REEs may not be totally soluble in this method.            ME-MS61</p>												
Applies to Method:	<p style="text-align: center;"><b>LABORATORY ADDRESSES</b></p> <p>Processed at ALS Sudbury located at 1351-B Kelly Lake Road, Unit #1, Sudbury, ON, Canada.</p> <table style="width: 100%; border: none;"> <tr> <td style="width: 33%;">CRU-31</td> <td style="width: 33%;">CRU-QC</td> <td style="width: 33%;">LOG-22</td> <td style="width: 15%;"></td> <td style="width: 5%;"></td> <td style="width: 19%;"></td> </tr> <tr> <td>PUL-QC</td> <td>SPL-21</td> <td>WEI-21</td> <td></td> <td></td> <td>PUL-31</td> </tr> </table>	CRU-31	CRU-QC	LOG-22				PUL-QC	SPL-21	WEI-21			PUL-31
CRU-31	CRU-QC	LOG-22											
PUL-QC	SPL-21	WEI-21			PUL-31								
Applies to Method:	<p>Processed at ALS Vancouver located at 2103 Dollarton Hwy, North Vancouver, BC, Canada.</p> <table style="width: 100%; border: none;"> <tr> <td style="width: 33%;">As-OG62</td> <td style="width: 33%;">Au-ICP21</td> <td style="width: 33%;">Co-OG62</td> <td style="width: 15%;"></td> <td style="width: 5%;"></td> <td style="width: 19%;"></td> </tr> <tr> <td>ME-OG62</td> <td></td> <td></td> <td></td> <td></td> <td>ME-MS61</td> </tr> </table>	As-OG62	Au-ICP21	Co-OG62				ME-OG62					ME-MS61
As-OG62	Au-ICP21	Co-OG62											
ME-OG62					ME-MS61								



ALS Canada Ltd.  
 2103 Dollarton Hwy  
 North Vancouver BC V7H 0A7  
 Phone: +1 604 984 0221 Fax: +1 604 984 0218  
 www.alsglobal.com/geochemistry

To: BATTERY MINERAL RESOURCES CORP.  
 THE PACIFIC BUILDING  
 SUITE 400, 744 WEST HASTINGS STREET  
 VANCOUVER BC V6C 1A5

Page: 1  
 Total # Pages: 2 (A - D)  
 Plus Appendix Pages  
 Finalized Date: 11-NOV-2020  
 Account: BMRPLLBW

**CERTIFICATE SD20222362**

Project: SHINING TREE 2020 RECON

This report is for 9 Rock samples submitted to our lab in Sudbury, ON, Canada on 2-OCT-2020.

The following have access to data associated with this certificate:

PETER DOYLE FRANK PLOEGER	MIKE HENDRICKSON MERCEDES RICH	SEAN HICKS ANDREW SALERNO
------------------------------	-----------------------------------	------------------------------

SAMPLE PREPARATION	
ALS CODE	DESCRIPTION
WEI-21	Received Sample Weight
CRU-QC	Crushing QC Test
PUL-QC	Pulverizing QC Test
LOG-22	Sample login - Rcd w/o BarCode
CRU-31	Fine crushing - 70% <2mm
SPL-21	Split sample - riffle splitter
PUL-31	Pulverize up to 250g 85% <75 um

ANALYTICAL PROCEDURES		
ALS CODE	DESCRIPTION	
ME-MS61	48 element four acid ICP-MS	
Au-ICP21	Au 30g FA ICP-AES Finish	ICP-AES

This is the Final Report and supersedes any preliminary report with this certificate number. Results apply to samples as submitted. All pages of this report have been checked and approved for release.

\*\*\*\*\* See Appendix Page for comments regarding this certificate \*\*\*\*\*

**Signature:**   
 Saa Traxler, General Manager, North Vancouver



ALS Canada Ltd.  
 2103 Dollarton Hwy  
 North Vancouver BC V7H 0A7  
 Phone: +1 604 984 0221 Fax: +1 604 984 0218  
 www.alsglobal.com/geochemistry

To: BATTERY MINERAL RESOURCES CORP.  
 THE PACIFIC BUILDING  
 SUITE 400, 744 WEST HASTINGS STREET  
 VANCOUVER BC V6C 1A5

Page: 2 - A  
 Total # Pages: 2 (A - D)  
 Plus Appendix Pages  
 Finalized Date: 11-NOV-2020  
 Account: BMRPLLBW

Project: SHINING TREE 2020 RECON

**CERTIFICATE OF ANALYSIS SD20222362**

Sample Description	Method	WEI-21	ME-MS61	ME-MS61	ME-MS61	ME-MS61	ME-MS61	ME-MS61	ME-MS61	ME-MS61	ME-MS61	ME-MS61	ME-MS61	ME-MS61	ME-MS61	ME-MS61
	Analyte	Recvd Wt.	Ag	Al	As	Ba	Be	Bi	Ca	Cd	Ce	Co	Cr	Cs	Cu	Fe
	Units	kg	ppm	%	ppm	ppm	ppm	ppm	%	ppm	ppm	ppm	ppm	ppm	ppm	%
	LOD	0.02	0.01	0.01	0.2	10	0.05	0.01	0.01	0.02	0.01	0.1	1	0.05	0.2	0.01
R1135		0.65	0.09	1.80	1.7	<10	0.41	0.24	19.45	<0.02	30.6	10.3	19	0.39	98.0	3.55
R1136		0.50	0.77	0.30	224	<10	0.92	2.13	27.5	0.03	39.2	169.5	6	0.07	249	0.91
R1138		0.58	18.85	0.94	4050	10	0.73	9.27	28.1	0.11	52.6	1610	3	0.39	147.5	1.88
R0652		1.50	0.10	7.44	9.7	70	0.42	0.10	7.26	0.09	27.3	53.0	89	0.55	165.0	10.35
R0653		2.34	1.45	0.37	184.5	10	0.09	0.07	0.31	0.14	2.57	57.5	7	0.37	22.0	34.9
R0654		1.21	1.30	0.33	162.0	10	0.07	0.05	0.18	0.13	2.10	51.2	10	0.32	19.7	31.7
R0655		1.86	0.07	4.49	8.2	60	0.91	0.04	7.39	0.06	76.3	137.5	807	0.18	264	7.68
R0656		2.87	0.50	1.57	129.0	30	0.13	0.18	0.05	0.10	9.30	31.3	22	2.33	33.8	32.4
R0657		1.97	0.08	6.97	10.5	260	0.78	0.06	5.68	0.44	52.9	54.0	94	1.66	80.0	11.00



ALS Canada Ltd.  
 2103 Dollarton Hwy  
 North Vancouver BC V7H 0A7  
 Phone: +1 604 984 0221 Fax: +1 604 984 0218  
 www.alsglobal.com/geochemistry

To: BATTERY MINERAL RESOURCES CORP.  
 THE PACIFIC BUILDING  
 SUITE 400, 744 WEST HASTINGS STREET  
 VANCOUVER BC V6C 1A5

Page: 2 - B  
 Total # Pages: 2 (A - D)  
 Plus Appendix Pages  
 Finalized Date: 11-NOV-2020  
 Account: BMRPLLW

Project: SHINING TREE 2020 RECON

**CERTIFICATE OF ANALYSIS SD20222362**

Sample Description	Method Analyte Units LOD	ME-MS61	ME-MS61	ME-MS61	ME-MS61	ME-MS61	ME-MS61	ME-MS61	ME-MS61	ME-MS61	ME-MS61	ME-MS61	ME-MS61	ME-MS61	ME-MS61	
		Ga ppm 0.05	Ge ppm 0.05	Hf ppm 0.1	In ppm 0.005	K % 0.01	La ppm 0.5	Li ppm 0.2	Mg % 0.01	Mn ppm 5	Mo ppm 0.05	Na % 0.01	Nb ppm 0.1	Ni ppm 0.2	P ppm 10	Pb ppm 0.5
R1135		7.89	0.05	0.7	0.120	0.04	11.6	46.1	1.01	2360	1.74	0.49	1.4	18.4	130	3.6
R1136		2.34	0.05	0.1	0.465	0.02	18.1	24.0	0.22	3290	3.28	0.04	0.1	29.8	10	59.6
R1138		4.90	0.06	0.7	0.417	0.03	22.4	14.8	0.33	3240	13.80	0.40	0.9	152.5	100	1110
R0652		20.2	0.05	2.5	0.087	0.17	11.8	15.7	3.18	1520	0.76	1.81	4.2	75.1	480	9.3
R0653		0.99	0.10	0.2	0.011	0.01	1.1	1.6	0.59	3870	1.81	0.01	0.4	124.5	10	27.9
R0654		0.90	0.08	0.2	0.008	0.01	0.9	1.4	0.62	4290	1.99	0.01	0.3	123.0	10	23.0
R0655		13.35	0.09	2.6	0.061	0.01	35.2	23.5	2.95	1880	0.59	0.93	25.6	365	920	3.0
R0656		4.45	0.11	1.1	0.025	0.19	4.8	8.7	0.57	1750	1.37	0.02	1.7	92.1	40	28.8
R0657		18.50	0.09	4.0	0.093	0.84	24.8	28.0	3.31	1690	1.03	2.48	14.5	53.2	1160	19.8



ALS Canada Ltd.  
 2103 Dollarton Hwy  
 North Vancouver BC V7H 0A7  
 Phone: +1 604 984 0221 Fax: +1 604 984 0218  
 www.alsglobal.com/geochemistry

To: BATTERY MINERAL RESOURCES CORP.  
 THE PACIFIC BUILDING  
 SUITE 400, 744 WEST HASTINGS STREET  
 VANCOUVER BC V6C 1A5

Page: 2 - C  
 Total # Pages: 2 (A - D)  
 Plus Appendix Pages  
 Finalized Date: 11-NOV-2020  
 Account: BMRPLLBW

Project: SHINING TREE 2020 RECON

**CERTIFICATE OF ANALYSIS SD20222362**

Sample Description	Method	ME-MS61	ME-MS61	ME-MS61	ME-MS61	ME-MS61	ME-MS61	ME-MS61	ME-MS61	ME-MS61	ME-MS61	ME-MS61	ME-MS61	ME-MS61	ME-MS61	
	Analyte	Rb	Re	S	Sb	Sc	Se	Sn	Sr	Ta	Te	Th	Ti	Tl	U	V
Units		ppm	ppm	%	ppm	ppm	ppm	ppm	ppm	ppm	ppm	ppm	%	ppm	ppm	ppm
LOD		0.1	0.002	0.01	0.05	0.1	1	0.2	0.2	0.05	0.05	0.01	0.005	0.02	0.1	1
R1135		0.9	0.002	0.02	0.31	14.5	1	0.7	48.4	0.09	<0.05	1.00	0.173	<0.02	0.7	128
R1136		0.6	0.002	0.03	0.23	15.8	1	0.2	70.6	<0.05	<0.05	0.12	0.021	0.02	0.1	20
R1138		1.0	<0.002	0.20	2.60	14.6	1	<0.2	65.0	0.07	<0.05	0.76	0.133	0.04	0.3	7
R0652		12.3	<0.002	0.14	0.06	32.7	1	1.0	408	0.28	<0.05	2.03	0.608	0.07	0.5	272
R0653		0.7	0.003	>10.0	9.05	1.6	1	0.3	2.1	<0.05	0.09	0.22	0.013	0.53	0.1	4
R0654		0.7	0.003	>10.0	9.15	1.5	1	0.3	1.7	<0.05	0.18	0.19	0.011	0.44	0.1	4
R0655		0.8	<0.002	0.42	0.27	30.5	1	0.8	375	1.36	<0.05	2.48	0.924	<0.02	0.4	247
R0656		9.4	0.004	>10.0	8.59	2.2	3	0.6	4.5	0.16	0.17	0.93	0.067	0.46	0.3	16
R0657		59.9	0.002	0.23	1.25	37.7	<1	1.1	164.0	0.88	<0.05	2.96	1.105	0.38	0.5	334





ALS Canada Ltd.  
 2103 Dollarton Hwy  
 North Vancouver BC V7H 0A7  
 Phone: +1 604 984 0221 Fax: +1 604 984 0218  
 www.alsglobal.com/geochemistry

To: BATTERY MINERAL RESOURCES CORP.  
 THE PACIFIC BUILDING  
 SUITE 400, 744 WEST HASTINGS STREET  
 VANCOUVER BC V6C 1A5

Page: 2 - D  
 Total # Pages: 2 (A - D)  
 Plus Appendix Pages  
 Finalized Date: 11-NOV-2020  
 Account: BMRPLLBW

Project: SHINING TREE 2020 RECON

**CERTIFICATE OF ANALYSIS SD20222362**

Sample Description	Method Analyte Units LOD	ME-MS61 W ppm 0.1	ME-MS61 Y ppm 0.1	ME-MS61 Zn ppm 2	ME-MS61 Zr ppm 0.5	Au-ICP21 Au ppm 0.001	CRU-QC Pass2mm % 0.01	PUL-QC Pass75um % 0.01
R1135		0.1	32.6	27	25.0	0.006	86.2	90.2
R1136		<0.1	59.0	11	2.7	0.005		90.3
R1138		0.2	55.9	33	22.7	0.003		
R0652		0.4	24.9	123	90.7	0.005		
R0653		0.2	3.6	35	10.6	0.336		
R0654		0.2	3.1	37	9.3	0.467		
R0655		0.3	17.2	199	102.5	0.010		
R0656		0.8	4.5	24	41.4	0.029		
R0657		0.4	30.1	211	146.0	0.002		



ALS Canada Ltd.  
 2103 Dollarton Hwy  
 North Vancouver BC V7H 0A7  
 Phone: +1 604 984 0221 Fax: +1 604 984 0218  
 www.alsglobal.com/geochemistry

To: BATTERY MINERAL RESOURCES CORP.  
 THE PACIFIC BUILDING  
 SUITE 400, 744 WEST HASTINGS STREET  
 VANCOUVER BC V6C 1A5

Page: Appendix 1  
 Total # Appendix Pages: 1  
 Finalized Date: 11-NOV-2020  
 Account: BMRPLLBW

Project: SHINING TREE 2020 RECON

<b>CERTIFICATE OF ANALYSIS SD20222362</b>
---

	<b>CERTIFICATE COMMENTS</b>								
Applies to Method:	<p style="text-align: center;"><b>ANALYTICAL COMMENTS</b></p> <p>REEs may not be totally soluble in this method.            ME-MS61</p>								
Applies to Method:	<p style="text-align: center;"><b>LABORATORY ADDRESSES</b></p> <p>Processed at ALS Sudbury located at 1351-B Kelly Lake Road, Unit #1, Sudbury, ON, Canada.</p> <table style="width: 100%; border: none;"> <tr> <td style="width: 33%;">CRU-31</td> <td style="width: 33%;">CRU-QC</td> <td style="width: 33%;">LOG-22</td> <td style="width: 15%;"></td> </tr> <tr> <td>PUL-QC</td> <td>SPL-21</td> <td>WEI-21</td> <td>PUL-31</td> </tr> </table>	CRU-31	CRU-QC	LOG-22		PUL-QC	SPL-21	WEI-21	PUL-31
CRU-31	CRU-QC	LOG-22							
PUL-QC	SPL-21	WEI-21	PUL-31						
Applies to Method:	<p>Processed at ALS Vancouver located at 2103 Dollarton Hwy, North Vancouver, BC, Canada.</p> <table style="width: 100%; border: none;"> <tr> <td style="width: 50%;">Au-ICP21</td> <td style="width: 50%;">ME-MS61</td> </tr> </table>	Au-ICP21	ME-MS61						
Au-ICP21	ME-MS61								