

We are committed to providing [accessible customer service](#).

If you need accessible formats or communications supports, please [contact us](#).

Nous tenons à améliorer [l'accessibilité des services à la clientèle](#).

Si vous avez besoin de formats accessibles ou d'aide à la communication, veuillez [nous contacter](#).

Assessment Report

Dave Feeney

March 2nd 2021

Grass Roots Prospecting

Red Lake Mining Division

Township of Ear Falls

Camping Lake Area

Mining Claims:

Claim ID : 557533, 5557534

52K11K269

52K11K268

Prepared By: Dave Feeney and Peter Pomialowski B.Comm.

Ontario Prospector's Number: 2000322

Expiry Date: 2023-11-23

Client Number: 10001295

Location and Access:

The mining claims 52K11K268 and 52K11K269 in Northwestern Ontario are addressed from Winnipeg, Manitoba using Trans-Canada Highway 1 and 17 to the town of Vermillion Bay, and then north on Highway 105 to the town of Ear Falls. The claims are approximately 9 kilometers northwest of Ear Falls, Ontario.

The majority of the property is covered by second growth forest. New vegetation is dominated by pine, spruce, and fir with lesser amounts of birch, poplar, and alder. Low regions are saturated forming spruce bogs and swamps. East of Highway 105 are hydro powerlines and west is a natural gas pipeline.

The mining claims were accessed via Highway 105. A Garmin GPSMAP 64 was used to locate the coordinates on Highway 105 that runs through claims 52K11K268 and 52K11K269. Coordinates of each corner of the claims were also input into the Garmin GPS.

Grassroots Prospecting:

Start at first coordinate R10 on Highway 105 and proceed east to coordinate E21 and marked the northeast corner of claim 52K11K269. Then proceeded back to R10 at highway 105 and then west to E22 and marked northwest corner of 52K11K269 and northeast corner of 52K11K268.

There were a number of rock boulders that were exposed off Highway 105 along the north border of 52K11K269 to the cleared area to the hydro powerline. It appears that there is bedrock beneath the boulders and this will be examined on the next trip in 2021 pending Ontario Covid Restriction Levels.



Figure 1 Marker at E22



Figure 2- Rock Boulders Between Hydro Line and Hwy 105 - 557534



Figure 3- Right of Way Gas Line -557534/557533

Next, we drove southeast on Highway 105 to coordinate R08. We then walked west on access road to gas pipeline route to E11 and marked south east corner of 52K11K269. The area was open grassland, heavy bush and undergrowth cleared for the natural gas pipeline access that runs north and south through 52K11K269. Next trip we may continue west from E11 to mark southeast corner of 52K11K268 and explore the terrain.



Figure 4- Marker at E11 -557534

Map Coordinates:

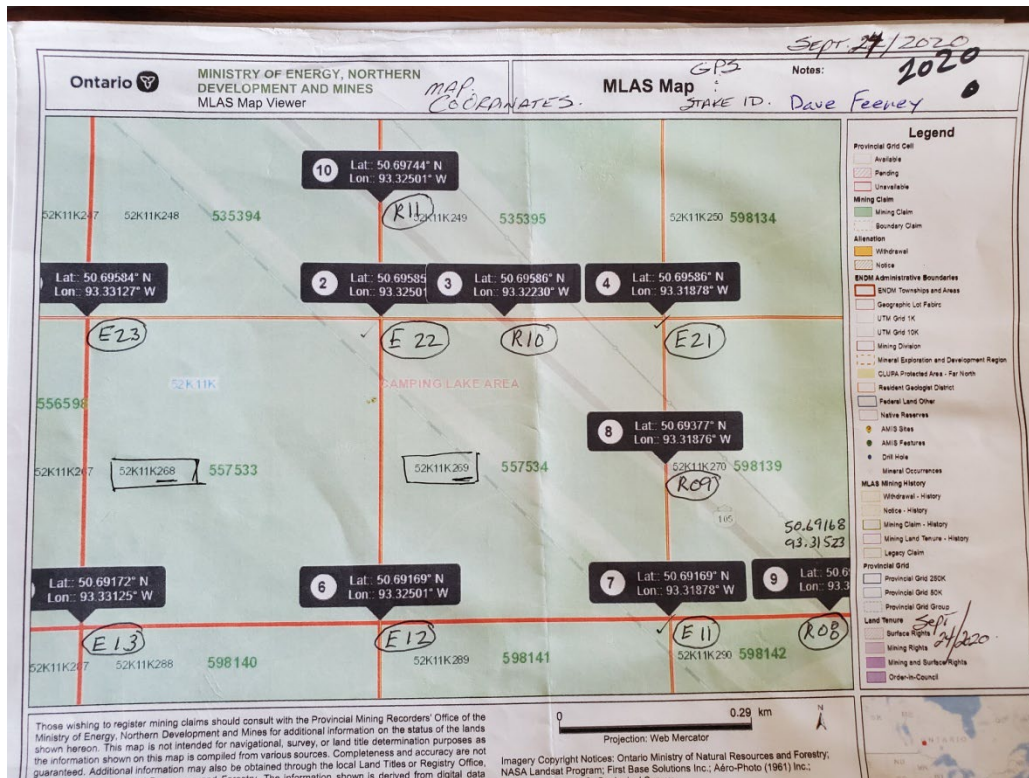


Figure 5- Map Coordinates

Grassroots Prospecting Route:

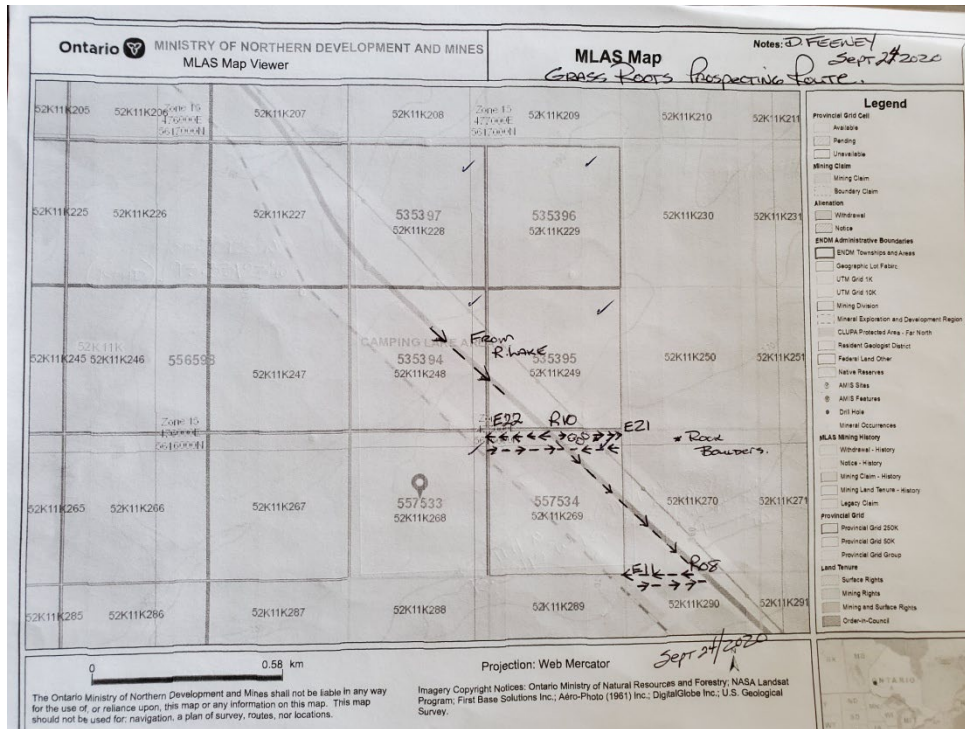


Figure 6- Prospecting Route

Daily Log for Grassroots Prospecting:

Conclusion:

The 2 claims 52K11K268 and 52K11K269 are covered by heavy overburden with the exception of the cleared pathway for the hydro power line to the east and the pathway for the natural gas pipeline to the west. On the northern edge of claim 52K11K269 are large rock boulders on the area between the highway 105 and pathway of the hydro power line. On the next trip we will obtain rock samples of the boulders and investigate if there is bedrock below the boulders. A geologist may come with us on our next prospecting trip.

Towards the west of the mining claims and west of Highway 105, a natural gas pipeline runs through both claims and should provide more accessibility for exploration and this is to be followed up on our next trip.

We will also research the previous Laurentian Goldfields Ltd. Report of July 2013 to further assess the possibility of mineral occurrences in the location of our claims.

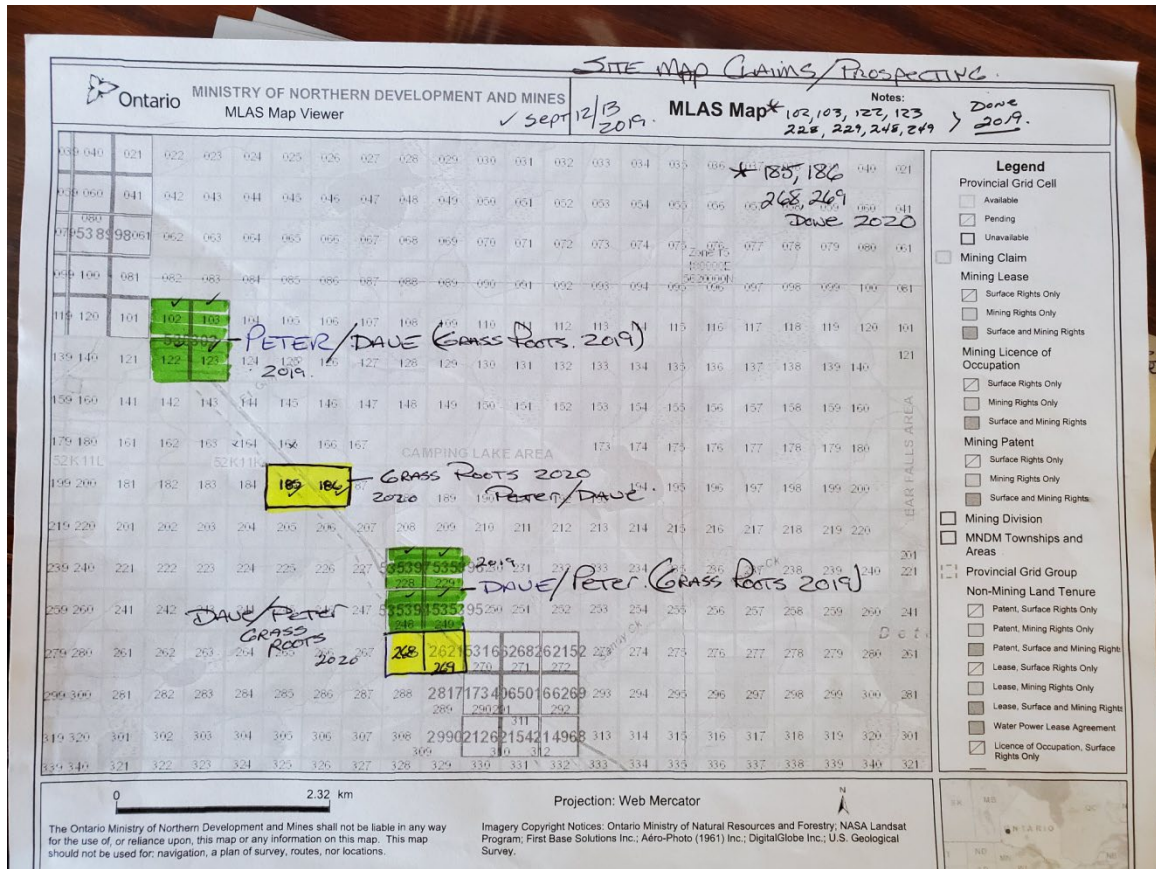


Figure 7- Grass Roots Prospecting All Claims 2019/2020

Cost for Assessment:

Date	Sweat Equity	Time	Amount	Description
9/13/2020	\$350.00	1 day/1 person	\$350.00	Download maps, input map coordinates into Garmin GPSMAP 64, Set location alarms
9/22/2020	\$350.00	1 day/2 people	\$700.00	Travel time from Ontario border to Ear Fall ON for Peter Pomialowski and Dave Feeney.
9/22/2020			\$36.06	Food
9/22/2020			\$79.10	Lodging
9/23/2020			\$79.10	Lodging
9/23/2020			\$40.54	Food
9/24/2020			\$79.10	Lodging
9/24/2020			\$29.65	Food
9/24/2020	\$350.00	1 day/2 people	\$700.00	Grassroots prospecting for Peter Pomialowski and Dave Feeney.
9/25/2020	\$350.00	1 day/2 people	\$700.00	Travel time from Ear Falls ON to Manitoba border
2/26/2021	\$350.00	4	\$350.00	Compile Data and Complete Report for Peter Pomialowski and Dave Feeney.
Total			\$3,143.55	



Figure 10 Gas Line on Claim 557534