

We are committed to providing [accessible customer service](#).

If you need accessible formats or communications supports, please [contact us](#).

Nous tenons à améliorer [l'accessibilité des services à la clientèle](#).

Si vous avez besoin de formats accessibles ou d'aide à la communication, veuillez [nous contacter](#).

Grass Roots Prospecting Report  
for the  
Parkin Creek Mining Claim(s)

Mancuso, Christopher  
MSc. Geology/Geophysics

`cwmancuso@hotmail.com`  
Claim Holder

July 22, 2021

# Contents

Table of Contents	ii
List of Figures	iii
Preamble	1
Abbreviations Used	1
1 Claims	1
2 Coordinate System	1
3 Location and Access	2
4 Personnel	3
5 Regional Geology	3
6 Previous Activities	3
7 Ongoing Exploration and Plans	4
8 Description of Exploration Activities	4
3.1 Log . . . . .	4
9 Interpretation of UAV Photography	8
References	9

## List of Figures

1	Key map showing the cell claims where the grass roots prospecting was done in relation townships, major highways, mining claims and bodies of water. . . . .	2
2	Map showing key activities as listed in Table 3. Bodies of water, forest cover and marsh indicated. Area photographed by UAV outlined. Elevation contours in 5 m increments. . . . .	6
3	Zoom of Figure 2 at 1:2000 scale emphasizing the activities in Multiple Cell 61229. Symbols and coordinate system as described in legend of Figure 2. . . . .	7
4	Overlapping, geo-referenced aerial photographs taken with UAV showing Parkin Creek with associated sandy-gravel bar. Image outlined on traverse map (Figure 2). Grid lines in are in 100 m increments. Coordinates are in NAD 83 17N. . . . .	8
5	A zoom of the image shown in Figure 4 where the Gravel Bar is indicated. The dots are spaced at 1 m apart for scale. . . . .	9

## List of Tables

1	Abbreviations used in this report. . . . .	1
2	Complete list of all personnel participating in grass roots exploration activities. . . . .	3
3	List of GPS way-points for activities by personnel while on the Parkin Creek claims. Activity locations mapped in Figure 2. . .	5

## Preamble

A technical report applied to grass roots prospecting assessment work that is required as part of an assessment work report submission pursuant to the Mining Act, R.S.O. 1990, C. M.14 and the Assessment Work Regulation (O. Reg. 65/18). This technical report includes a detailed explanation of the geoscience work done, maps or plans, where required and details of the expenses claimed for the work, together with supporting receipts, invoices and other documents for those expenses.

## Abbreviations Used

Table 1: Abbreviations used in this report.

<b>CM</b>	Christopher Mancuso
<b>SRO</b>	Surface Rights Owner
<b>MLAS</b>	Mining Land Administration System
<b>SIC</b>	Sudbury Igneous Complex
<b>DDH</b>	Diamond Drill Hole
<b>VG</b>	Visible Gold
<b>UAV</b>	Unmanned Aerial Vehicle

## 1 Claims

Mining Division: **Sudbury**

Township: **Parkin** (OGF ID #67075054)

Cell Numbers: **612229 642860 642861**

## 2 Coordinate System

All maps displayed in: UTM NAD83 17N

### 3 Location and Access

Access to the property claim blocks is by driving north on highways 84, 85 and 86 from Sudbury, Ontario for 38.2 km to the town of Capreol. Then 7.9 km north on highway 84 to the intersection with Portelance Road (see Figure 1). Then continuing north on Portelance for 14.9 km until it becomes the Gauthier lumber road. At this point vehicles turn left onto the local access road and follow it for 2.9 km to arrive at the claims. The claims are accessed from foot from this point on.

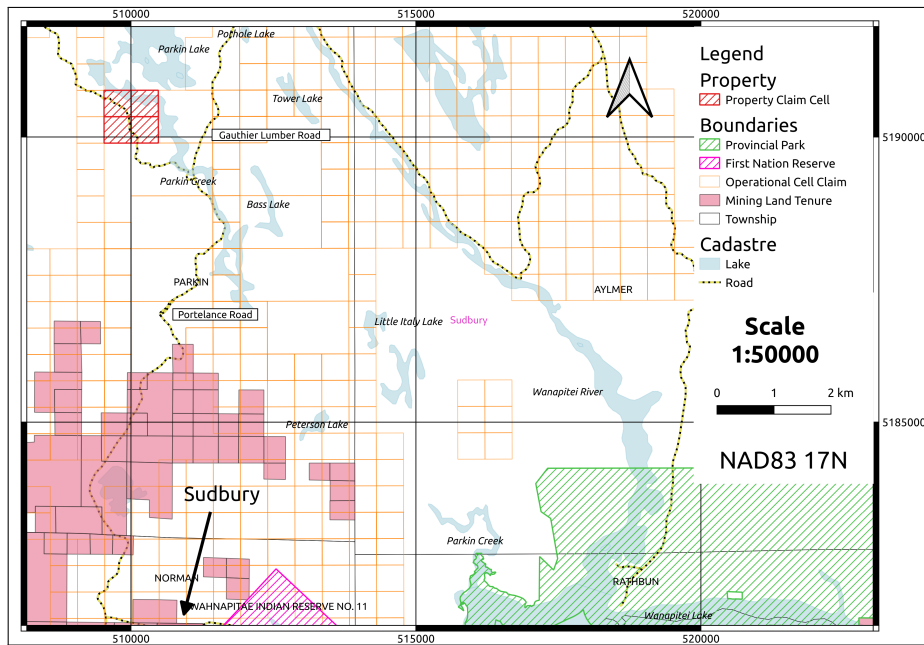


Figure 1: Key map showing the cell claims where the grass roots prospecting was done in relation townships, major highways, mining claims and bodies of water.

## 4 Personnel

First Name	Last Name	Phone	Email
Christopher Aaron	Mancuso Haavisto	204-962-0359 705-207-5764	cmancuso@hotmail.com aaron.haavisto@gmail.com

Table 2: Complete list of all personnel participating in grass roots exploration activities.

## 5 Regional Geology

The Parkin Creek claim is located in an under-explored poly-metallic gold district 40 km northeast of Sudbury, Ontario, within the estimated area influenced by the Sudbury Meteorite Impact Dressler (1982). In this area, the SIC, a concentric pattern of offset dykes and zones of Archean and Proterozoic rocks host mineralization.

The Parkin quartz diorite offset dyke, located east of Parkin Lake, is widely believed to represent the faulted extension of the mineralized Whistle offset dyke located to the south (Dunbar, 2000). Extensive soda metasomatism contributes to mineralization and abundant quartz veins host disseminated pyrite, chalcopyrite and/or galena.

## 6 Previous Activities

July 1993 - Victor Boulard drilled 2 shallow (less than 20 m) DDH's (MNDM # 200737 & #200738) into exposed bedrock. Intersections were assayed for gold and silver. No VG or other precious metals were observed in hand samples.

November 1995 - WMC International Ltd complete a season of field exploration with the aim to delineate the extent of the Parkin Offset dike. Many possible lithological contacts and structure are inferred and mapped within the relevant cell claims listed in this report.

February 2000 - Champion Bear Resources continue nearby field work related to Parkin Offset dike. More lithological contacts and structures inferred and mapped (Dunbar, 2000).

September 2000 - Victor Boulard performed stripping and trenching on an 65 m x 20 m area located on the western edge of the cell 612229 (indicated on Figure 2). Three quartz veins with pyrite were observed and one calcite vein. Samples were chemically assayed with values of Au, Pt and Pd near the detection limit (5 to 20 ppb).

September 2020 - Multiple cell claim 612229 for author became active on September 7. No SRO's identified by MLAS.

## 7 Ongoing Exploration and Plans

March 2021 - Single cell claims 642860, 642861 for author became active on March 1. No SRO's identified by MLAS.

March 2021 - An exploration plan was granted for the Parkin Creek project on March 16. This is Exploration Plan Application:

**PL-21-000018**

## 8 Description of Exploration Activities

Cell 612229 was prospected by the individuals listed Table 2 on October 17, 2020. Conveniently, the mining cells are cut by a local logging road. However, the geography is thickly wooded beyond the road and difficult to access on foot, particularly where Parkin Creek separates the northernmost extent of the claim. Use of a UAV facilitated early outcrop descriptions in these unreachable areas where traverse was not possible.

### 3.1 Log

October 17, 2020 - 9:32 - Depart Sudbury, ON and pick up A. Haavisto in Garson, ON.

October 17, 2020 - 10:52 - Arrived at Parkin Creek claims and parked vehicle at head of a wide trail (**1o1**). No exposed bedrock.

October 17, 2020 - 10:52 - 11:01 - Hiked north along trail. Looked for DDH hole 200738 (Figure 2), but was overgrown. North extent of trail blocked by human habitation (buildings and vehicles). Turned back to later re-asses possible SRO.

October 17, 2020 - 11:01 - 11:06 - Drove east along logging road to a small, level clearing (**1o2**).

October 17, 2020 - 11:06 - 11:20 - Took photographs of area. Searched for outcrops, no exposure. Affixed Ministry of Natural Resources 'Notice of Activity' (M-150-5376058956) to post to mark further development of a vehicle pad in the area (**1o3**).

October 17, 2020 - 11:20 - 11:43 - Traversed through forest in attempt to reach



Parkin Creek. Turned back at significant muskeg. Arrived at a small clearing in the forest at point **1o4**. Observed two outcrops along path which appear to me meta-sediments. Forest deemed impassible beyond this point without trail-cutting.

October 17, 2020 - 11:43 - 12:15 - Utilized UAV to explore further north along intended route towards Parkin Creek and Lake. Captured aerial photographs of the creek and its banks. Observed a bar of gravel on the embankment.

October 17, 2020 - 12:15 - 13:07 - Returned along previous traverse to vehicle.

October 17, 2020 - 13:07 - 13:11 - Drove south to another trail head and parked vehicle at **1o5**.

October 17, 2020 - 13:11 - 13:15 - Traversed north along trail observing outcrops in stripped away topsoil. Looked for possible contact indicated in prior work (WMC report). Possible buried contact at **1o6** photographed. October 17, 2020 - 13:15 - 13:19 - Returned to vehicle and departed claims.

October 17, 2020 - 14:45 - Arrived in Sudbury, ON.

Date & Time	Code	Activity	Comment
2020/10/17 10:52	1o1	Waypoint	Wide trail access point (road?)
2020/10/17 11:06	1o2	Waypoint	Parking spot access point
2020/10/17 11:20	1o3	Waypoint	Affixed building permit
2020/10/17 11:43	1o4	Waypoint	UAV flight and photos
2020/10/17 13:11	1o5	Waypoint	Parking and Outcrop
2020/10/17 13:15	1o6	Waypoint	Outcrop

Table 3: List of GPS way-points for activities by personnel while on the Parkin Creek claims. Activity locations mapped in Figure 2.

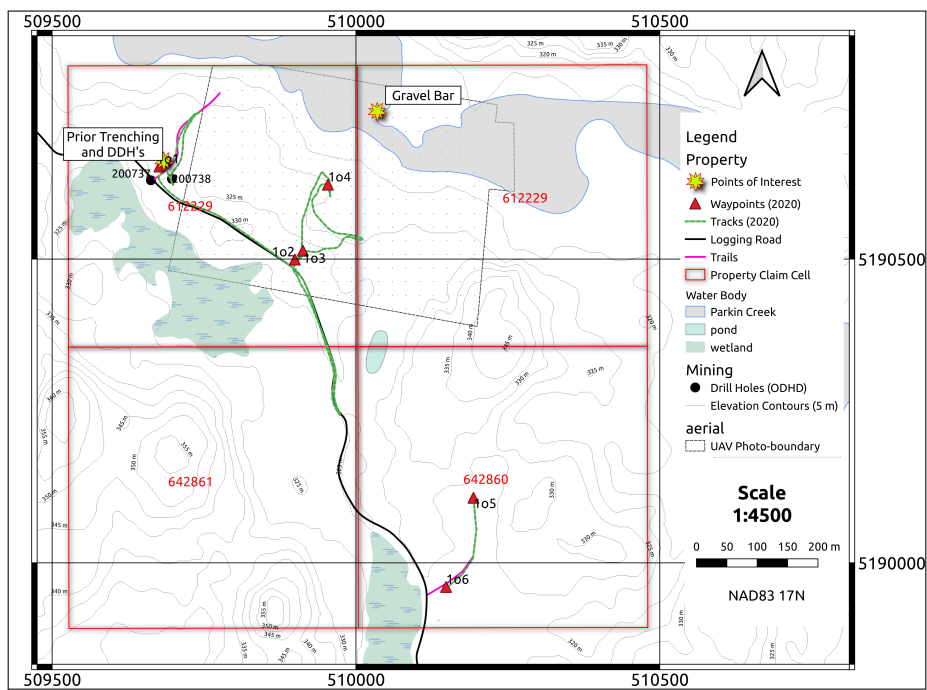


Figure 2: Map showing key activities as listed in Table 3. Bodies of water, forest cover and marsh indicated. Area photographed by UAV outlined. Elevation contours in 5 m increments.

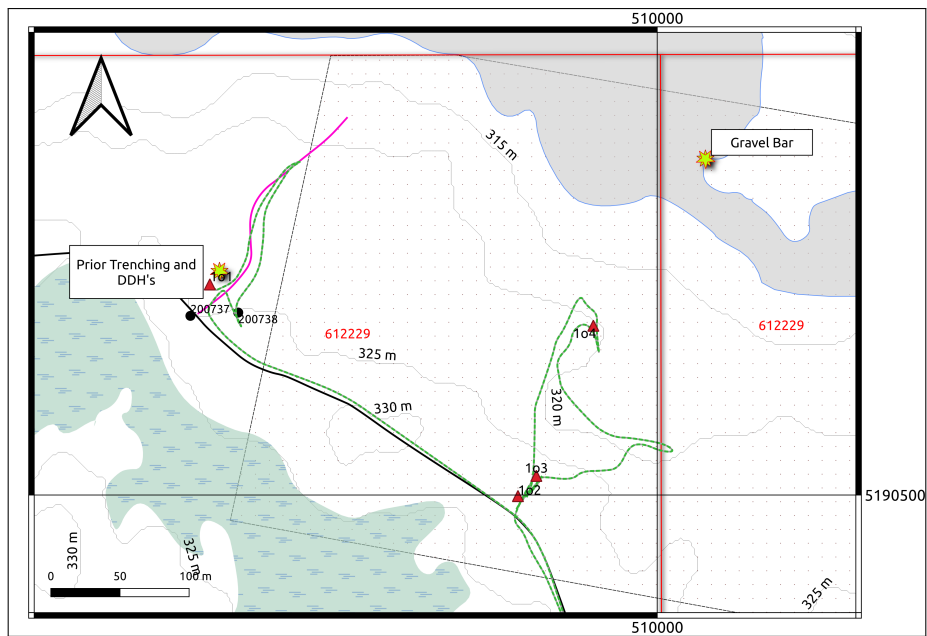


Figure 3: Zoom of Figure 2 at 1:2000 scale emphasizing the activities in Multiple Cell 61229. Symbols and coordinate system as described in legend of Figure 2.

## 9 Interpretation of UAV Photography

The forest cover was too thick to pass without cutting a trail, so UAV photography was utilized to remotely visualize the northern extent of claim cell 612229. Inferences made from these photos will influence future exploration decisions regarding accessing that part of the claim.

Photos were taken at a multitude of elevations and overlapped to generate high resolution image of the northern exploration zone in the cell (see Figure 4). These photos were geo-referenced onto UTM coordinate space and overlain on the maps (see Figure 2 for the outline of the compiled image).

Of particular importance to the present exploration strategy, a 10-20 m long bar of sand and gravel was imaged north of Parkin creek (labelled in Figures 2, 3 and 4). A zoom is provided in Figure 5. Leucocratic cobbles and boulders are evident in a matrix of coarse grained sand and pea gravel. The material could contain detritus of nearby quartz and carbonate veins and would be ideal to prospect for VG by bulk sampling (e.g., panning). The submitted exploration plan (PL-21-000018) provides a means to access this area in 2021 field season.

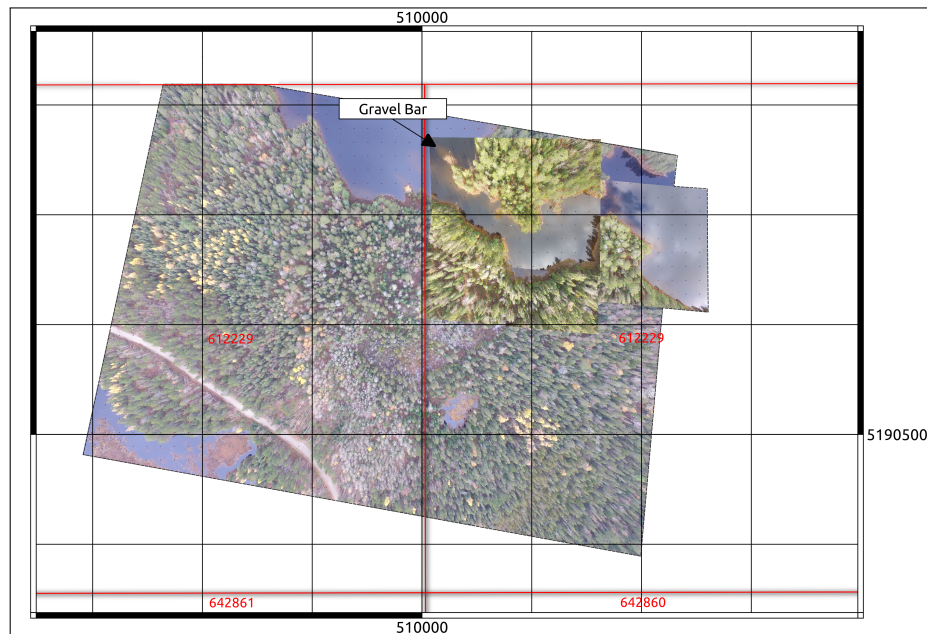


Figure 4: Overlapping, geo-referenced aerial photographs taken with UAV showing Parkin Creek with associated sandy-gravel bar. Image outlined on traverse map (Figure 2). Grid lines in are in 100 m increments. Coordinates are in NAD 83 17N.



Figure 5: A zoom of the image shown in Figure 4 where the Gravel Bar is indicated. The dots are spaced at 1 m apart for scale.

## References

- Dressler, B., 1982, Geology of the wanapitei lake area, district of Sudbury.
- Dunbar, P., 2000, Report on the field visit to the brady gold showing and search for parkin offset dyke in parkin township, sudbury area, ontario for champion bear resources ltd.