

We are committed to providing [accessible customer service](#).

If you need accessible formats or communications supports, please [contact us](#).

Nous tenons à améliorer [l'accessibilité des services à la clientèle](#).

Si vous avez besoin de formats accessibles ou d'aide à la communication, veuillez [nous contacter](#).

Abstract

The Wawa Diamonds Property is located in Echum and Dolson Townships, northeast of Wawa.

A two man crew spent two days prospecting. Over the two days prospecting, one kimberlite dike was located and sampled.

CJP Exploration Inc.

**Wawa Diamonds Property
Grass Roots Prospecting Program**

**C Jason Ploeger, P.Ge.
August 31, 2021**

TABLE OF CONTENTS

1.0 Survey Details	3
1.1 Project Name	3
1.2 Client.....	3
1.3 Location	3
1.4 Access	4
1.5 Ownership.....	4
1.6 Coordinates.....	4
2.0 Survey Work Undertaken	5
2.1 Survey Log.....	5
2.2 Personnel.....	5
2.3 Traverse Specifications and Purpose.....	5
3.0 Overview of survey results	6
3.1 Summary of Traverse on September 21 th , 2019	6
3.2 Summary of Traverse on September 22 nd , 2019.....	13
3.3 Recommendations	15
3.4 Conclusions.....	15

LIST OF APPENDICES

- APPENDIX A: STATEMENT OF QUALIFICATIONS**
- APPENDIX B: INSTRUMENT SPECIFICATIONS**
- APPENDIX C: LIST OF MAPS (IN MAP POCKET)**

LIST OF TABLES AND FIGURES

Figure 1: Location of the Wawa Diamonds Property	3
Figure 2: Anthony Ploeger on Kimberlite Dyke in outcrop.	6
Figure 3: Kimberlite Dyke Contact.....	7
Figure 4: Sample of Fletch Kimberlite	8
Figure 5: Picture of Sample 34188	9
Figure 6: Picture of Sample 34189	10
Figure 7: Picture of Sample 34190	11
Figure 8: Picture of Sample 34191	12
Figure 9: Picture of Sample 34192	14
Table 1: Cell Claims and Claim Holder.....	4
Table 2: Prospecting Log	5

1.0 SURVEY DETAILS

1.1 PROJECT NAME

This project is known as the **Wawa Diamonds Property**.

1.2 CLIENT

CJP Exploration Inc
15 MacDonald St.
Larder Lake, Ontario
P0K1L0

1.3 LOCATION

The Wawa Diamonds Property is located in Echum and Dolson Townships approximately 50km northeast of Wawa, Ontario. The traverse area covers two cell claims located within the Sault Ste Marie Mining Division of Ontario.

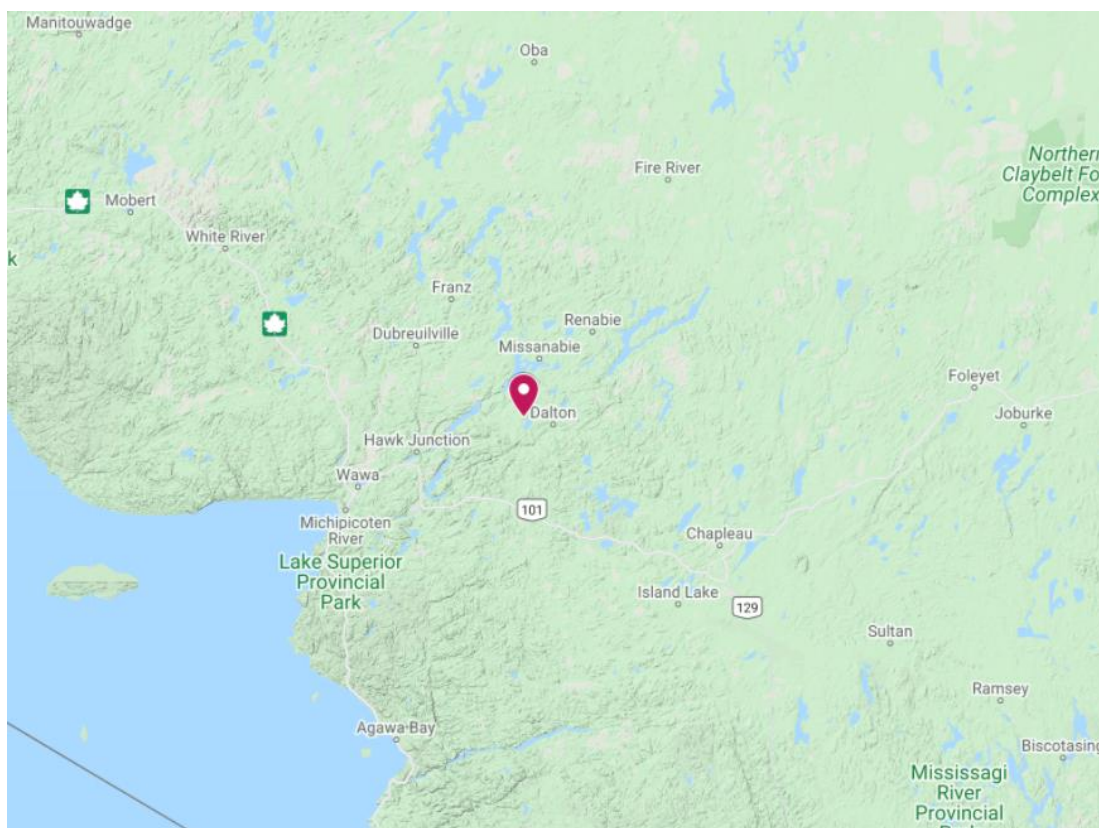


Figure 1: Location of the Wawa Diamonds Property

1.4 ACCESS

Access to the property was attained with a 4x4 truck by traveling east from Wawa, Ontario on highway 101 for approximately 60km. From here highway 651 was travelled north for 31.5km. At this point an ATV was used along an old un-named access road for 3.5-8.5km to the two traverse areas.

1.5 OWNERSHIP

Claim Number	Holder
535127	CJP Exploration Inc
535128	CJP Exploration Inc
535129	CJP Exploration Inc
535251	CJP Exploration Inc

Table 1: Cell Claims and Claim Holder

1.6 COORDINATES

All coordinates are in NAD 83, Zone 16N.

2.0 SURVEY WORK UNDERTAKEN

2.1 SURVEY LOG

Date	Description
September 20, 2019	Mobilize to Wawa
September 21, 2019	Locate and establish access to property and perform traverses.
September 22, 2019	Locate and establish access to property and perform traverse and Demobilize to Larder Lake

Table 2: Prospecting Log

2.2 PERSONNEL

Jason Ploeger and Anthony Ploeger both of Larder Lake, Ontario performed the prospecting traverse.

2.3 TRAVERSE SPECIFICATIONS AND PURPOSE

The purpose of the prospecting traverse was

- a) Determine access and possible access issues
- b) Locate any outcropping that may occur on the claims
- c) Locate MDI showings and obtain a sample

This meant that no set traverses were planned and that it was random generated in the field. Rough coordinates were generated and programmed into the GPS for the MDI showings. A property outline was also generated, to constrain the traverses.

3.0 OVERVIEW OF SURVEY RESULTS

3.1 SUMMARY OF TRAVERSE ON SEPTEMBER 21TH, 2019

The target for this prospecting traverse was to locate the Fletch Dike and sample it. The MDI location for this dike was reported to be located at coordinates 713851E and 5338753N. Once identified additional prospecting was performed in an attempt to locate more kimberlite outcrops.

All of the vegetation encountered was thick new growth tag alders and poplar.



Figure 2: Anthony Ploeger on Kimberlite Dyke in outcrop.



Figure 3: Kimberlite Dyke Contact

Sample - No Number

Rock Description:

- Kimberlite

Location:

709097E
5338272N



Figure 4: Sample of Fletch Kimberlite

Sample 34188

This is a sample of the wall/host rock of the dike.

Rock Description:

- Mafic Volcanic

Location:

709103E

5338270N



Figure 5: Picture of Sample 34188

Sample 34189

This is a sample of the alteration along the contact between the kimberlite dike and mafic volcanic.

Rock Description:

- Altered Mafic Volcanic

Location:

709098E

5338268N



Figure 6: Picture of Sample 34189

Sample 54190

Rock Description:

- Kimberlite

Location:

709116E

5338246N



Figure 7: Picture of Sample 34190

Sample 34191

Rock Description:

- Mafic Volcanic

Location:

709103E

5338270N



Figure 8: Picture of Sample 34191

3.2 SUMMARY OF TRAVERSE ON SEPTEMBER 22ND, 2019

The target for this prospecting traverse was to locate and identify the Geodex No 2 Dike and sample it. The MDI location for the dike was reported to be located at coordinates 713851E and 5338753N.

All outcropping noted during this traverse was mafic volcanic and no indication was located of this showing.

All of the vegetation encountered was thick new growth tag alders and poplar.

Sample 34191

Rock Description:

- Mafic Volcanic

Location:

714030E

5338805N



Figure 9: Picture of Sample 34192

3.3 RECOMMENDATIONS

The Fletch Dike was located in two different locations. Physical properties should be performed on the samples collected. If there is a contrast in the magnetics of the dike and the host mafic volcanic, a detailed drone magnetometer should be performed to trace the extent of the strike of the dike.

The Geodex No 2 Dike was not located. More research and a compilation should be done to better identify the probable location of the dike.

3.4 CONCLUSIONS

The prospecting was partially successful in accomplishing the first pass objectives. The Fletch dike was located and sampled; however the Geodex No 2 Dike was never located. No additional kimberlite outcrops were located.

APPENDIX A

STATEMENT OF QUALIFICATIONS

I, C. Jason Ploeger, hereby declare that:

1. I am a professional geophysicist with residence in Larder Lake, Ontario and am presently employed as a Geophysicist and Geophysical Manager of Canadian Exploration Services Ltd. of Larder Lake, Ontario.
2. I am a Practising Member of the Association of Professional Geoscientists, with membership number 2172.
3. I graduated with a Bachelor of Science degree in geophysics from the University of Western Ontario, in London Ontario, in 1999.
4. I have practiced my profession continuously since graduation in Africa, Bulgaria, Canada, Mexico and Mongolia.
5. I am a member of the Ontario Prospectors Association, a Director of the Northern Prospectors Association and a member of the Society of Exploration Geophysicists.
6. I do have an interest in the properties and securities of **CJP Exploration Inc.**
7. I am responsible for the field work, final processing and validation of the survey results and the compilation of the presentation of this report. The statements made in this report represent my professional opinion based on my consideration of the information available to me at the time of writing this report.

C. Jason Ploeger, P.Ge., B.Sc.



Larder Lake, ON
August 31, 2021

APPENDIX B

GARMIN GPS MAP 62S



Physical & Performance:	
Unit dimensions, WxHxD:	2.4" x 6.3" x 1.4" (6.1 x 16.0 x 3.6 cm)
Display size, WxH:	1.43" x 2.15" (3.6 x 5.5 cm); 2.6" diag (6.6 cm)
Display resolution, WxH:	160 x 240 pixels
Display type:	transflective, 65-K color TFT
Weight:	9.2 oz (260.1 g) with batteries
Battery:	2 AA batteries (not included); NiMH or Lithium recommended
Battery life:	20 hours
Waterproof:	yes (IPX7)
Floats:	no
High-sensitivity receiver:	yes
Interface:	high-speed USB and NMEA 0183 compatible

Maps & Memory:	
Basemap:	yes
Preloaded maps:	no
Ability to add maps:	yes
Built-in memory:	1.7 GB
Accepts data cards:	microSD™ card (not included)
Waypoints/favorites/locations:	2000
Routes:	200
Track log:	10,000 points, 200 saved tracks
Features & Benefits:	
Automatic routing (turn by turn routing on roads):	yes (with optional mapping for detailed roads)
Electronic compass:	yes (tilt-compensated, 3-axis)
Touchscreen:	no
Barometric altimeter:	yes
Camera:	no
<u>Geocaching-friendly:</u>	yes (paperless)
<u>Custom maps compatible:</u>	yes
Photo navigation (navigate to geotagged photos):	yes
Outdoor GPS games:	no
Hunt/fish calendar:	yes
Sun and moon information:	yes

Tide tables:	yes
Area calculation:	yes
Custom POIs (ability to add additional points of interest):	yes
Unit-to-unit transfer (shares data wirelessly with similar units):	yes
Picture viewer:	yes
Garmin Connect™ compatible (online community where you analyze, categorize and share data):	yes

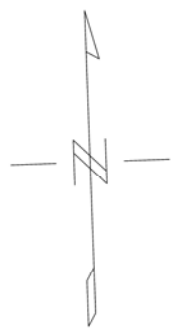
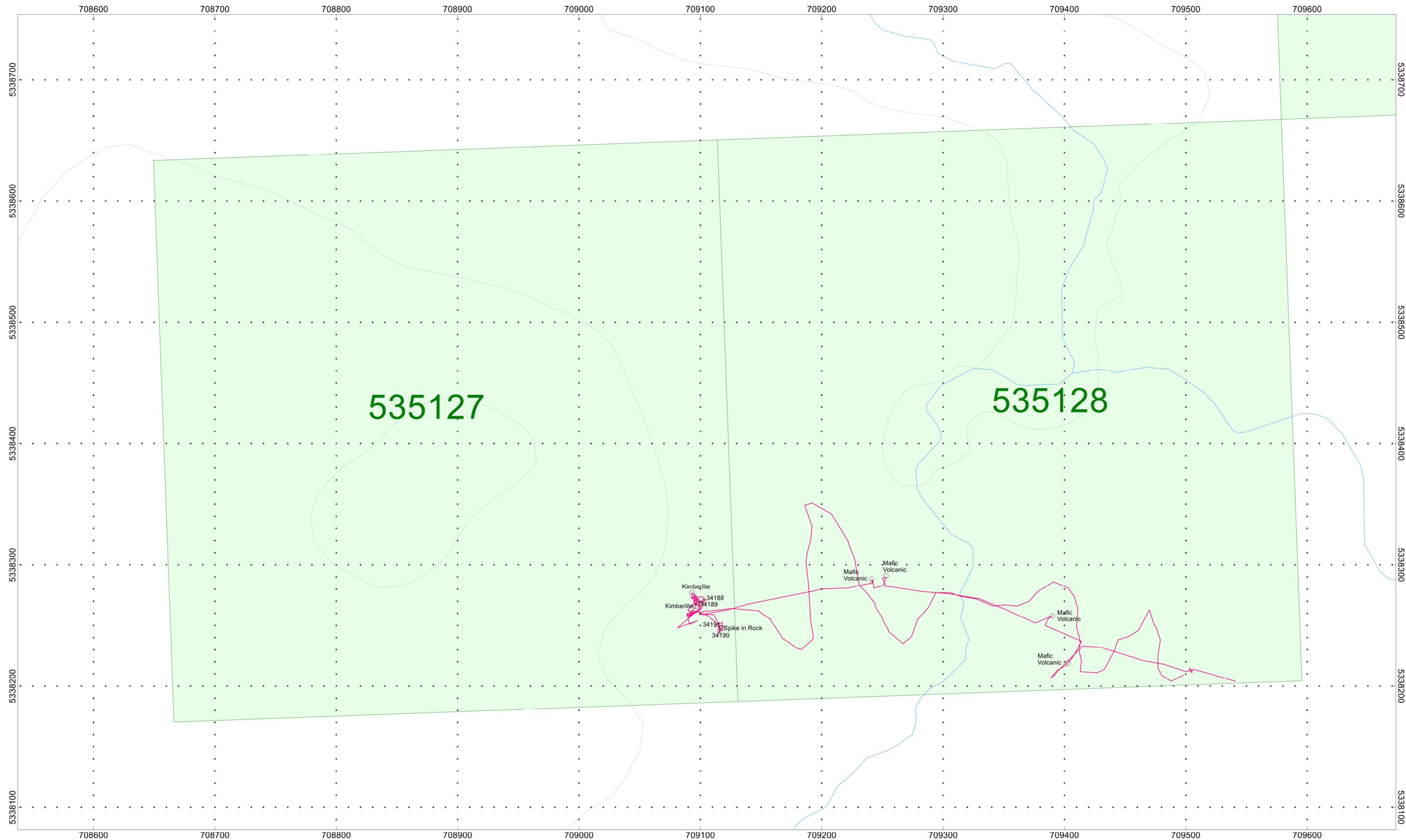
- *Specifications obtained from www.garmin.com*

APPENDIX C

LIST OF MAPS (IN MAP POCKET)

- 1) CJP-WawaDiamonds-Fletch-Prospecting-2019 (1:2000)
- 2) CJP-WawaDiamonds-Geodex-Prospecting-2019 (1:2000)

Total Maps = 2



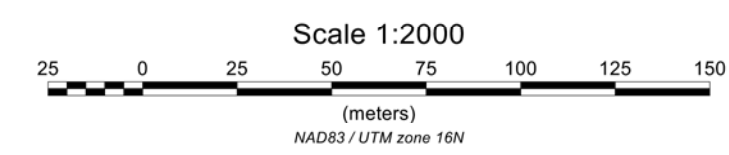
CJP EXPLORATION INC.

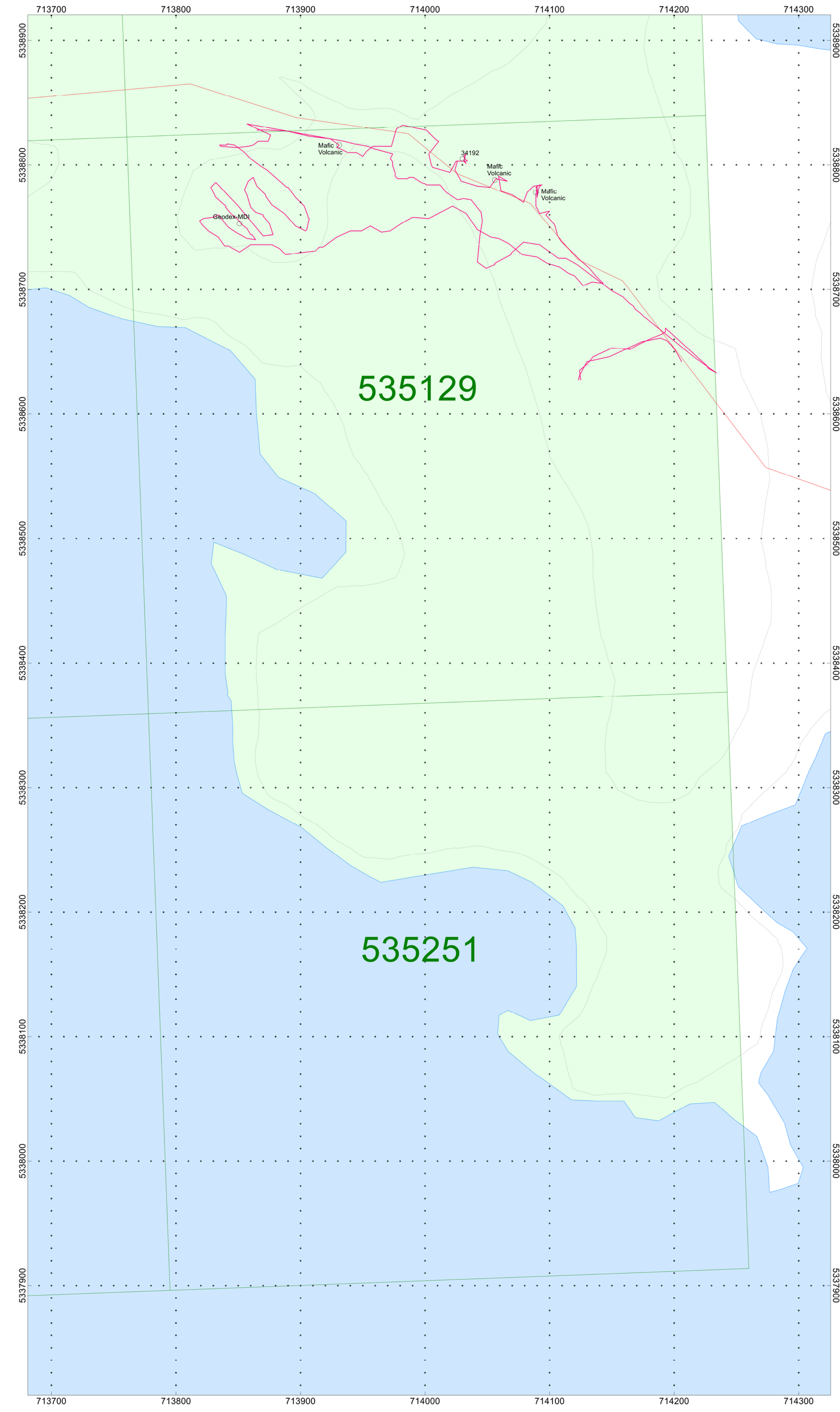
**Wawa Diamonds Property
Echum and Dolson Townships, Ontario**

Prospecting Traverse
September 21, 2019

Traverses By: Jason Ploeger
and Anthony Ploeger
Processed by: Jason Ploeger
Map Drawn By: C Jason Ploeger, P.Geo
August 2021

Drawing : CJP-WawaDiamonds-Fletch-Prospecting-2019





CJP EXPLORATION INC.

**Wawa Diamonds Property
Echum and Dolson Townships, Ontario**

Prospecting Traverse
September 22, 2019

Traverses By: Jason Ploeger
and Anthony Ploeger
Processed by: Jason Ploeger
Map Drawn By: C Jason Ploeger, P.Geo
August 2021

Drawing : CJP-WawaDiamonds-Geodex-Prospecting-2019

