

We are committed to providing [accessible customer service](#).

If you need accessible formats or communications supports, please [contact us](#).

Nous tenons à améliorer [l'accessibilité des services à la clientèle](#).

Si vous avez besoin de formats accessibles ou d'aide à la communication, veuillez [nous contacter](#).

**INTERNATIONAL EXPLORERS & PROSPECTORS INC**

**REPORT OF DRILL CORE SAMPLING**

**MAISONVILLE TOWNSHIP PROPERTY**

**MAISONVILLE TOWNSHIP  
LARDER MINING DIVISION, ONTARIO**

**PREPARED FOR**

**INTERNATIONAL EXPLORERS & PROSPECTORS INC**

**AUTHORED BY  
LIONEL BONHOMME**

**TIMMINS, ONTARIO**

**DECEMBER 13,2021**

## TABLE OF CONTENTS

Page

Summary Background Conclusion

1

### ATTACHMENTS

REGIONAL MAP 1

CLAIM LOCATION MAP

6MS 05-01 log

6MS 05-03 log

Drill hole plans with sample locations

Laboratoire Expert assay certificate

Actlabs assay certificate

## SUMMARY

In October 2021 Peter Colbert & Lionel Bonhomme planned a follow up program on the project. We inquired with the Resident Geologist office for the work report of 2005 drill program filed in 2007-2008. The files were not on the ministry office probably due to a fire. The original data was located in the archived material in Timmins. A review of drill core with litho-geochemistry sampling from 2007 & 2013 was located and 2 samples were collected for assay as well as 7 samples for litho-geochem +ree+metals. In the process of removing the core that was crossed piled it revealed a significant zone of sulphides marked for assay in 2005 had not been split and sent to the lab. This is in the process of being completed. That interval is from 302.0 m to 317.0 m.

## BACKGROUND

The property is located 110 km east of Timmins, by travelling highway 101 east then highway 11 south to the Bourque road turnoff. Then a gravel road to the local skidoo club hall leads to a south logging road leads to Wolf lake and a parking spot is located at nad 83 zone 17 559876 m.e. 5345477 m.n. Nad 83 zone 17

## GEOLOGY:

The property is located in the southern portion Abitibi Greenstone Belt within the Lower Blake River assemblage and locally confirmed extrusive volcanic intruded by Felsic and Mafic intrusive units . A few volcanic units were confirmed.

Previous sampling from 2007 has revealed that the logged graphitic units previously identified are actually calc-alkalic Dacites intruded a Quartz Feldspar Porphyry as photo attached in the report. Further downhole the volcanics rocks are of rhyolite, andesite and andesitic basalt with a 15 m interval containing, disseminated, semi & massive sulphides

The volcanics are transitional similar to Blake -river assemblage. (Dr Tim Barrett Ore systems consulting)

In reviewing the intrusives nearby, BHP-Utah identified syenites 4 miles northeast of this project dated at 2677 (3 margin of error) at the Winnie Lake intrusive complex near a few abandoned deposits northwest Bernhart/Maisonville township.(p.c. Dr M Hamilton U of T )

New samples collected for assay are as follows:

Sample #	ddh hole #	from	to	analysis
19552	6MS-05-01	245.6	245.77	assay
19553	6MS-05-01	308.5	308.71	assay
19505	6MS-05-03	24.5	24.72	assay litho ree
19506	6MS-05-03	44.0	44.18	assay litho ree
19507	6MS-05-03	39.0	39.24	assay litho ree
19508	6MS-05-03	88.36	88.56	assay litho ree
19509	6MS-05-01	209.0	209.4	assay litho ree
19510	6MS-05-01	243.6	245.77	assay litho ree
19511	6MS-05-01	308.5	308.71	assay litho ree

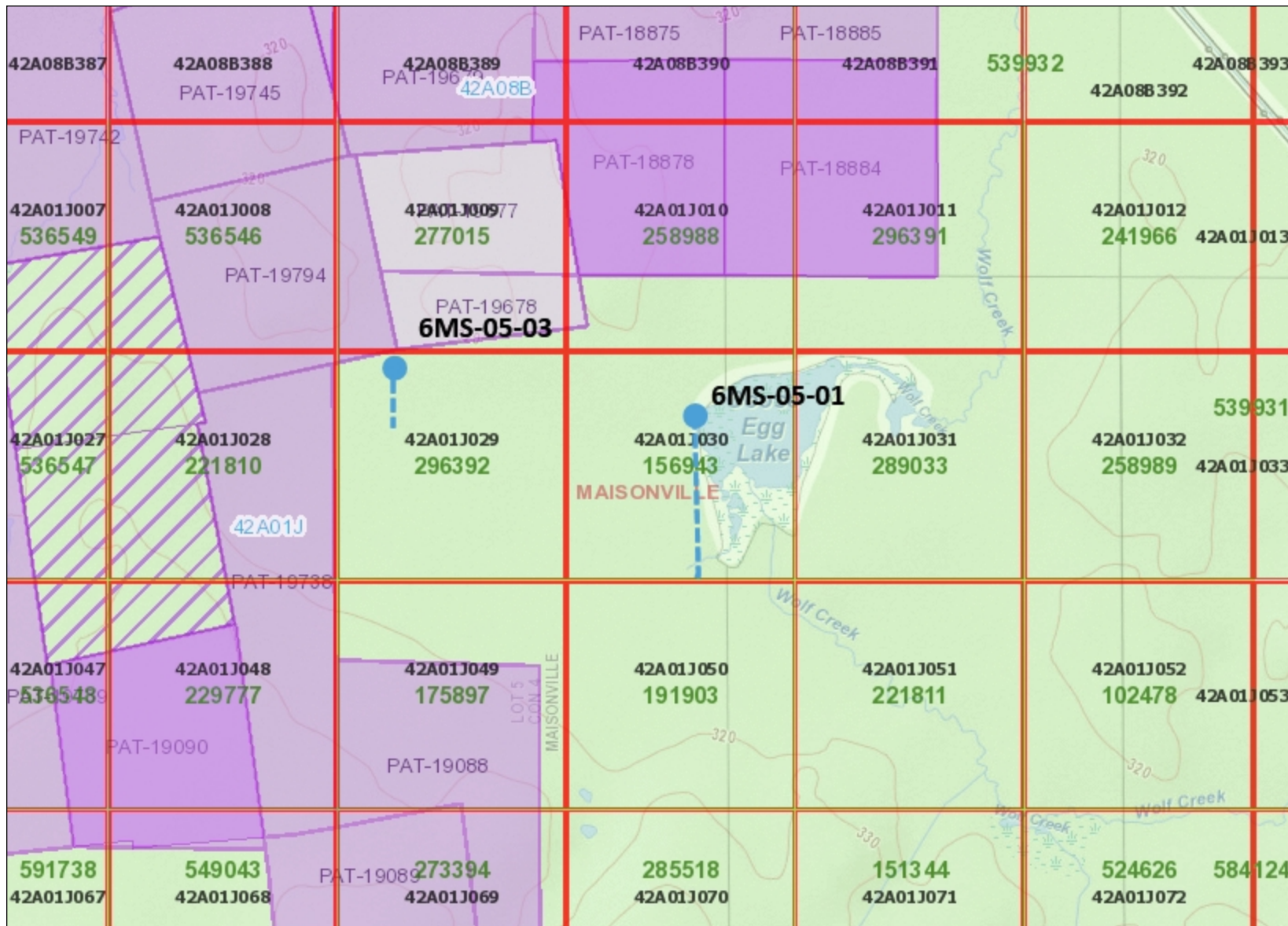
All results are attached with the invoice from the laboratories.



## CONCLUSION

A more detailed review will be completed when the splitting & assaying is complete with a detailed chemo-stratigraphic map being done to better understand the relationship of the contacts of Kinojevis and Blake -River Assemblage collision and the role of the QFP intruding in the sulphides bearing transitional volcanics.





### Legend

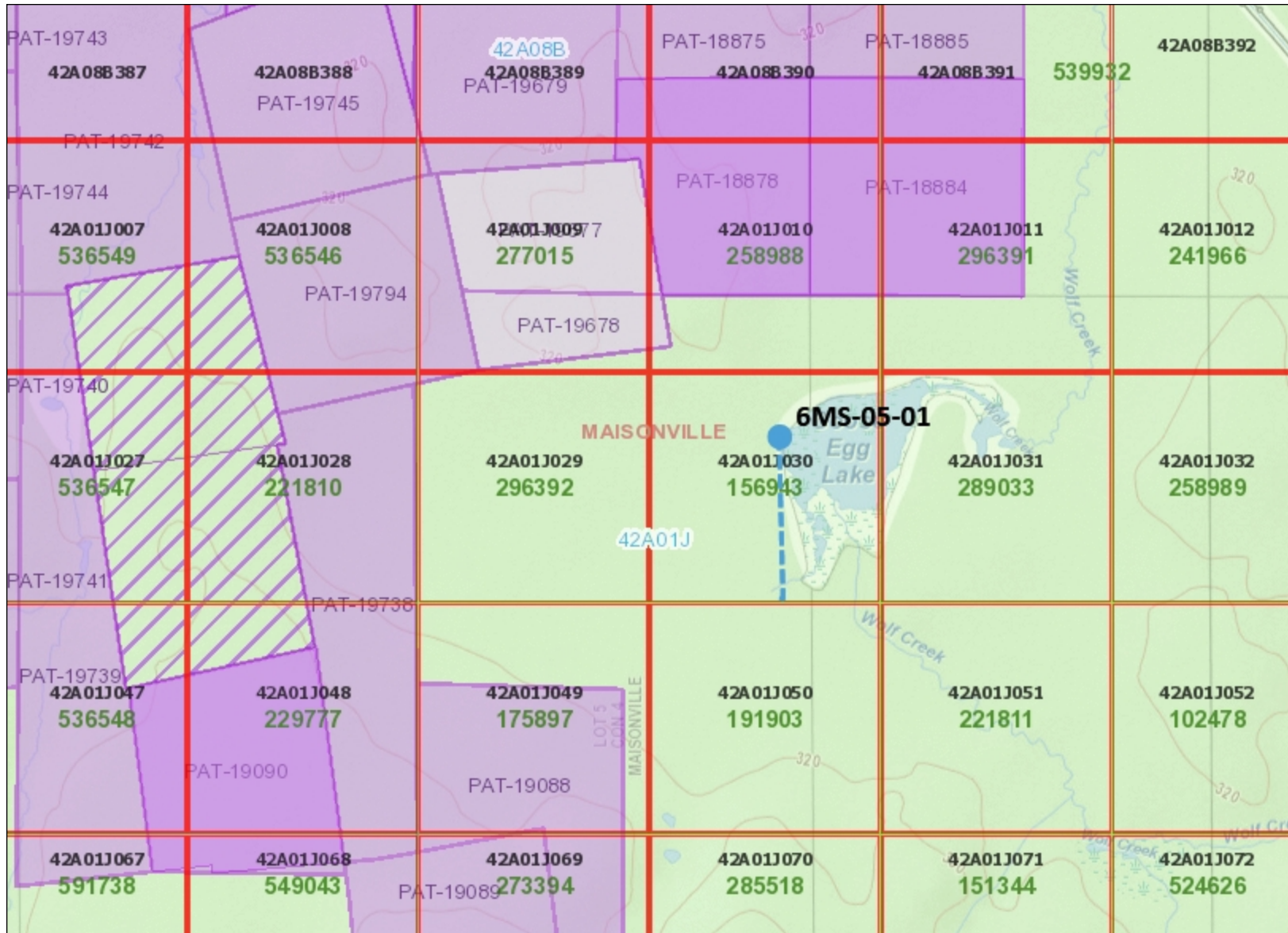
- Provincial Grid Cell**
  - Available
  - Pending
  - Unavailable
- Mining Claim**
  - Mining Claim
  - Boundary Claim
- Alienation**
  - Withdrawal
  - Notice
- ENDM Administrative Boundaries**
  - ENDM Townships and Areas
  - Geographic Lot Fabric
  - UTM Grid 1K
  - UTM Grid 10K
  - Mining Division
  - Mineral Exploration and Development Region
  - CLUPA Protected Area - Far North
  - Resident Geologist District
  - Federal Land Other
  - Native Reserves
- AMIS Sites**
  - AMIS Sites
  - AMIS Features
  - Drill Hole
  - Mineral Occurrences
- MLAS Mining History**
  - Withdrawal - History
  - Notice - History
  - Mining Claim - History
  - Mining Land Tenure - History
  - Legacy Claim
- Provincial Grid**
  - Provincial Grid 250K
  - Provincial Grid 50K
  - Provincial Grid Group
- Land Tenure**
  - Surface Rights
  - Mining Rights
  - Mining and Surface Rights
  - Order-in-Council

Those wishing to register mining claims should consult with the Provincial Mining Recorders' Office of the Ministry of Energy, Northern Development and Mines for additional information on the status of the lands shown hereon. This map is not intended for navigational, survey, or land title determination purposes as the information shown on this map is compiled from various sources. Completeness and accuracy are not guaranteed. Additional information may also be obtained through the local Land Titles or Registry Office, or the Ministry of Natural Resources and Forestry. The information shown is derived from digital data available in the Provincial Mining Recorders' Office at the time of downloading from the Ministry of Energy, Northern Development and Mines web site.



Imagery Copyright Notices: Ontario Ministry of Natural Resources and Forestry; NASA Landsat Program; First Base Solutions Inc.; Aéro-Photo (1961) Inc.; DigitalGlobe Inc.; U.S. Geological Survey.  
© Queen's Printer for Ontario, 2021





### Legend

- Provincial Grid Cell**
  - Available
  - Pending
  - Unavailable
- Mining Claim**
  - Mining Claim
  - Boundary Claim
- Alienation**
  - Withdrawal
  - Notice
- ENDM Administrative Boundaries**
  - ENDM Townships and Areas
  - Geographic Lot Fabric
  - UTM Grid 1K
  - UTM Grid 10K
  - Mining Division
  - Mineral Exploration and Development Region
  - CLUPA Protected Area - Far North
  - Resident Geologist District
  - Federal Land Other
  - Native Reserves
- AMIS Sites**
  - AMIS Sites
  - AMIS Features
  - Drill Hole
  - Mineral Occurrences
- MLAS Mining History**
  - Withdrawal - History
  - Notice - History
  - Mining Claim - History
  - Mining Land Tenure - History
  - Legacy Claim
- Provincial Grid**
  - Provincial Grid 250K
  - Provincial Grid 50K
  - Provincial Grid Group
- Land Tenure**
  - Surface Rights
  - Mining Rights
  - Mining and Surface Rights
  - Order-in-Council

Those wishing to register mining claims should consult with the Provincial Mining Recorders' Office of the Ministry of Energy, Northern Development and Mines for additional information on the status of the lands shown hereon. This map is not intended for navigational, survey, or land title determination purposes as the information shown on this map is compiled from various sources. Completeness and accuracy are not guaranteed. Additional information may also be obtained through the local Land Titles or Registry Office, or the Ministry of Natural Resources and Forestry. The information shown is derived from digital data available in the Provincial Mining Recorders' Office at the time of downloading from the Ministry of Energy, Northern Development and Mines web site.



Imagery Copyright Notices: Ontario Ministry of Natural Resources and Forestry; NASA Landsat Program; First Base Solutions Inc.; Aéro-Photo (1961) Inc.; DigitalGlobe Inc.; U.S. Geological Survey.  
© Queen's Printer for Ontario, 2021





Under section 8 of the Mining Act, this information is used to maintain a public record. / Aux termes de l'article 8 de la Loi sur les mines, ces renseignements serviront à tenir à jour les dossiers publics.

Hole ID / Forage n° 6MS-05-1		Claim No. / N° de concession minière L 3001439		Township/Area / Canton Maisonville	
Name of Land Holder / No. of 6070205 Canada Inc.		Azimuth 180 °	Dip / Inclinaison -45 °	End of Hole (m) / fin de forage (m) 500 m	Overburden Depth / profondeur des morts- terrains 21.0 m
Drilling Company / Compagnie de forage Norex Drilling Ltd.		Logged by (print) / Inscrit par (écrite en lettres moulées) Wayne Corstorphine		Core Size / Dimensions de la carotte NQ 47.6 mm	Collar Elevation / Élévation du collier 0
Date Hole Started (yyyy/mm/dd) / Date de commencement du forage (aaaa/mm/jj) 2005-05-13	Date Completed (yyyy/mm/dd) / Date d'achèvement (aaaa/mm/jj) 2005-05-20	Date Logged (yyyy/mm/dd) / Date d'inscription au journal (aaaa/mm/jj) 2005-05-22		Location of Core Storage / Endroit où la carotte est stockée Timmins ON, Airport Road Site	

DRILL HOLE COLLAR LOCATION CO-ORDINATES / COORDONNÉES DU COLLIER DE TROU DE FORAGE	
<u>UTM / MTU</u>	<u>Latitude / Longitude</u> degrees/minutes/seconds or decimal values degrés/minutes/secondes ou valeurs décimales
Datum: <input type="checkbox"/> NAD 27 <input checked="" type="checkbox"/> NAD 83	Datum: <input type="checkbox"/> NAD 27 <input checked="" type="checkbox"/> NAD 83
Zone: <input type="checkbox"/> 15 <input type="checkbox"/> 16 <input checked="" type="checkbox"/> 17 <input type="checkbox"/> 18	Latitude:
Northing / Ordonnée: 5343817	Longitude:
Easting / Abscisse: 560112	

Footage/Avancement		Rock type / type de roche	Description (Colour, grain size, texture, minerals, alteration, etc.) / Description (Couleur, granulométrie, texture, minéraux, transformation, etc.)	Planar Feature Angle * / Angle des caractéristiques planes	Core Specimen Footage / Longueur en pieds des carottes prélevées	Your Sample No. / N° d'échantillon du prospecteur	Sample Footage / Niveau de prélèvement de l'échantillon (en pieds)		Sample Length / Longueur de l'échantillon	Assays / Analyses minéralurgiques
From/De	To/À						From/De	To/À		
0.0	21.0	Overburden	Casing							
21.0	21.8	Sediments	Greywacke Coarse texture. sub-cm lithic clasts suspended in a fine-grained groundmass. Fragments are a darker, grey-black (argillite), angular and form 10-15% of the unit. The hosting groundmass has a slightly brownish-beige cast. Unmineralized. Lower contact sharp but irregular.							
21.8	287.6	Sediments	Graphitic Argillites Dark black to grey-black, very fine-grained, vaguely to well laminated on mm to							

*Wayne Corstorphine*

\*For features such as foliation, bedding, schistosity, measured from the long axis of the core. / \*Exemples de caractéristiques : foliation, schistosité, stratification. L'angle est mesuré par rapport à l'axe longitudinal de la carotte.

"Mining Lands Website: [http://www.mndm.gov.on.ca/mndm/mines/lands/default\\_e.asp](http://www.mndm.gov.on.ca/mndm/mines/lands/default_e.asp)"  
"Site Web de la Section des terrains miniers : [http://www.mndm.gov.on.ca/mndm/mines/lands/default\\_f.asp](http://www.mndm.gov.on.ca/mndm/mines/lands/default_f.asp)"



Footage/Avancement		Rock type / type de roche	Description (Colour, grain size, texture, minerals, alteration, etc.) / Description (Couleur, granulométrie, texture, minéraux, transformation, etc.)	Planar Feature Angle ° / Angle des caractéristiques planes	Core Specimen Footage / Longueur en pieds des carottes prélevées	Your Sample No. / N° d'échantillon du prospecteur	Sample Footage / Niveau de prélèvement de l'échantillon (en pieds)		Sample Length / Longueur de l'échantillon	Assays / Analyses minéralurgiques
From/De	To/À						From/De	To/À		
			cm scale.							
			33.0: bedding laminae 55 to core axis.							
			Sparsely scattered sub-cm sized clots of semimassive fine-grained pyrite.							
			Occasional breccia structure with white carbonate matrix over narrow 1-2 cm widths.							
			Occasional section of lighter grey wacke as at 33.6-34.66m.							
			A uniform sequence with greywacke sections becoming more prevalent after about 49.0m. Blackish graphitic laminae intersperse with the paler wacke sections.							
			59.0-77.0: Very blocky core, segments typically <10-20cm. Minor discoloration at 65.0-66.5m as pale feldspar-like "clasts" present in the groundmass.							
			77.0-88.0: Moderately blocky section.							
			88.0-92.0: Similar to 59.0-77.0.							
		Intrusive	64.5-67.3: Feldspar Porphyry							
			Medium grey to greenish and buff-grey.							
			Fine-grained groundmass with 3-5% pink-white subhedral, equidimensional to elongate feldspar crystals up to 4-5mm but averaging 2mm in size.							
			Massive to weakly foliated.							
			Nil sulphides.							
			Upper and lower contacts indistinct in blocky core. Host argillite at contacts exhibit a weak buffish alteration colour.							
			67.3-78.2: Graphitic Argillite							

\*For features such as foliation, bedding, schistosity, measured from the long axis of the core. / \*Exemples de caractéristiques : foliation, schistosité, stratification. L'angle est mesuré par rapport à l'axe longitudinal de la carotte.

"Mining Lands Website: [http://www.mndm.gov.on.ca/mndm/mines/lands/default\\_e.asp](http://www.mndm.gov.on.ca/mndm/mines/lands/default_e.asp)"

"Site Web de la Section des terrains miniers : [http://www.mndm.gov.on.ca/mndm/mines/lands/default\\_f.asp](http://www.mndm.gov.on.ca/mndm/mines/lands/default_f.asp)"

Footage/Avancement		Rock type / type de roche	Description (Colour, grain size, texture, minerals, alteration, etc.) / Description (Couleur, granulométrie, texture, minéraux, transformation, etc.)	Planar Feature Angle ° / Angle des caractéristiques planes	Core Specimen Footage / Longueur en pieds des carottes prélevées	Your Sample No./ N° d'échantillon du prospecteur	Sample Footage / Niveau de prélèvement de l'échantillon (en pieds)		Sample Length / Longueur de l'échantillon	Assays / Analyses minéralurgiques
From/De	To/À						From/De	To/À		
			Similar to previous. Some paler, greyish sections - possibly alteration as paler greywacke beds are of minor occurrence in this interval.							
		Intrusive	78.2-79.7: Feldspar Porphyry							
			Similar to 64.5-67.3 but with heavier feldspar phenocryst content at 5-10%.							
			Massive, medium grey with a fine-grained groundmass.							
			Feldspars up to 4-5mm, average is 1-2mm.							
			No sulphides of note.							
			Poorly defined contacts. Host argillite bleached at or near the contacts							
			79.7-287.6: continuation of graphitic argillites sequence with minor greywacke.							
			Same as previous such sections.							
			Blackish colour. Very fine-grained to aphanitic.							
			85.6: Bedding laminae at 50 degrees to core axis.							
			1-2% fracture calcite at random angles - brittle infill.							
			92.0-110.0: Blocky section - moderate to strong.							
			Rare pyrite as at 99.6m - massive, 6mm thick lens. Pyrite generally present only as coatings on fractures.							
			Subtle changes between the black argillites and greyer, finely textured wacke beds.							
			122.0-129.0: Section exhibits a pale grey-white discolouring due in part to alteration effects possibly related to carbonate-quartz infill of local breccias.							

\*For features such as foliation, bedding, schistosity, measured from the long axis of the core. / \*Exemples de caractéristiques : foliation, schistosité, stratification. L'angle est mesuré par rapport à l'axe longitudinal de la carotte.

"Mining Lands Website: [http://www.mndm.gov.on.ca/mndm/mines/lands/default\\_e.asp](http://www.mndm.gov.on.ca/mndm/mines/lands/default_e.asp)"

"Site Web de la Section des terrains miniers : [http://www.mndm.gov.on.ca/mndm/mines/lands/default\\_f.asp](http://www.mndm.gov.on.ca/mndm/mines/lands/default_f.asp)"

Footage/Avancement		Rock type / type de roche	Description (Colour, grain size, texture, minerals, alteration, etc.) / Description (Couleur, granulométrie, texture, minéraux, transformation, etc.)	Planar Feature Angle * / Angle des caractéristiques planes	Core Specimen Footage / Longueur en pieds des carottes prélevées	Your Sample No./ N° d'échantillon du prospecteur	Sample Footage / Niveau de prélèvement de l'échantillon (en pieds)		Sample Length / Longueur de l'échantillon	Assays / Analyses minéralurgiques
From/De	To/À						From/De	To/À		
			- nil to trace amounts of disseminated pyrite.							
			123.0-134.5: Blocky core.							
			Graphitic sections can be locally conductive in the black argillite sections.							
			134.0-142: 3-5% fine white calcite fracture veinlets throughout the core.							
			138.8-142.4: Greywacke-rich section.							
			142.4-257.8: continuation of typical graphitic argillite							
			Locally graphitic, fine breccia structure with white calcite infilling - same as							
			134.0-142.3m.							
			Interval is very blocky still especially 142.4-151.5m. Broken up more in the							
			more graphitic sections. 151.25 onward is more competent. less broken up.							
			154.65: A barren 40cm white carbonate-quartz vein.							
			159.3: Bedding laminae 60 degrees to core axis.							
			Occasional sub-cm thickness of fine, semimassive to massive pyrite, pyrrhotite							
			also common. Sulphides total <1% overall.							
			188.0: Excellent flame structure created by 2-3 thin laminae of greywacke							
			settling into soft black, graphitic mud. Tops are uphole.							
			194.2: Bedding laminae 45 degrees to core axis.							
			199.0: Bedding laminae 50 degrees to core axis.							
			213.6: Bedding laminae 40 degrees to core axis.							

\*For features such as foliation, bedding, schistosity, measured from the long axis of the core. / \*Exemples de caractéristiques : foliation, schistosité, stratification. L'angle est mesuré par rapport à l'axe longitudinal de la carotte.

"Mining Lands Website: [http://www.mndm.gov.on.ca/mndm/mines/lands/default\\_e.asp](http://www.mndm.gov.on.ca/mndm/mines/lands/default_e.asp)"

"Site Web de la Section des terrains miniers : [http://www.mndm.gov.on.ca/mndm/mines/lands/default\\_f.asp](http://www.mndm.gov.on.ca/mndm/mines/lands/default_f.asp)"



Footage/Avancement		Rock type / type de roche	Description (Colour, grain size, texture, minerals, alteration, etc.) / Description (Couleur, granulométrie, texture, minéraux, transformation, etc.)	Planar Feature Angle ° / Angle des caractéristiques planes	Core Specimen Footage / Longueur en pieds des carottes prélevées	Your Sample No. / N° d'échantillon du prospecteur	Sample Footage / Niveau de prélèvement de l'échantillon (en pieds)		Sample Length / Longueur de l'échantillon	Assays / Analyses minéralurgiques
From/De	To/À						From/De	To/À		
			214.8-215.9: 2% massive to semimassive pyrite beds and lenses up to 1-2cm in thickness. (Such lenses are scattered throughout the graphitic unit)							
			220.8-226.0: blocky core							
			240.0-249.7: 1-2% pyrite as scattered massive bands and clots up to 2cm in thickness. Mineralization sits within a thick sequence of graphitic argillite with minor greywacke (142.4-250.0 and onward).							
			246.0: bedding laminae 50 deg.							
			257.8-261.0: greywacke section - gradational contacts.							
			271.6: bedding laminae 60 deg.							
			281.2-287.6: Fine wacke-siltstone section. Gradational interbedding into greyish, very finely laminated, weakly graphitic and pyritic							
287.6	288.1	Sediments	Fault Zone							
			Graphitic with traces of sphalerite and galena							
			Distinctive zone - crumpled, tectonized graphitic argillite.							
			At upper contact the zone is sheared and well schisted.							
			288.0: 3-4cm interval with coarse sphalerite of red-brown colour, and bright, reflective, silvery soft galena. Estimate 3-5% of each in a 3cm interval displaying fine breccia texture in association with several sub-cm carbonate quartz veinlets. The veinlets themselves do not appear to contain any mineralization.							
			The fault zone carries 3-4% pyrite as massive blebs and clots.							

\*For features such as foliation, bedding, schistosity, measured from the long axis of the core. / \*Exemples de caractéristiques : foliation, schistosité, stratification. L'angle est mesuré par rapport à l'axe longitudinal de la carotte.

"Mining Lands Website: [http://www.mndm.gov.on.ca/mndm/mines/lands/default\\_e.asp](http://www.mndm.gov.on.ca/mndm/mines/lands/default_e.asp)"

"Site Web de la Section des terrains miniers : [http://www.mndm.gov.on.ca/mndm/mines/lands/default\\_f.asp](http://www.mndm.gov.on.ca/mndm/mines/lands/default_f.asp)"



# Drill Log Journal de forage

Footage/Avancement		Rock type / type de roche	Description (Colour, grain size, texture, minerals, alteration, etc.) / Description (Couleur, granulométrie, texture, minéraux, transformation, etc.)	Planar Feature Angle ° / Angle des caractéristiques planes	Core Specimen Footage / Longueur en pieds des carottes prélevées	Your Sample No./ N° d'échantillon du prospecteur	Sample Footage / Niveau de prélèvement de l'échantillon (en pieds)		Sample Length / Longueur de l'échantillon	Assays / Analyses minéralurgiques
							From/De	To/À		
288.1	290.0	Sediments	Graphitic Argillite Black, very fine-grained with 1-2% pyrite as large clasts. Similar to revious graphitic sections. Lower contact is gradational.							
290.0	293.3	Sediments	Intermixed Argillite and Siltstone/Wacke Similar to 281.2-287.6							
293.3	295.8	Sediments	Graphitic Argillite Similar to 288.1-290.0, greyish black, very subtle laminate bedding.							
295.8	297.1	Intrusive	Feldspar Porphyry Medium grey, very fine-grained to aphanitic groundmass with 2% lighter grey anhedral to subhedral feldspar phenocrysts up to 3mm in size. Massively textured. Upper contact paler over 10cm - bleached appearance. Unmineralized. Lower contact obscured in broken core.							
297.1	300.5	Volcanic	Silicified Zone - Felsic Volcanic (Rhyolite?) Aphanitic, dark blackish grey with near pervasive light grey to buff-grey alteration that gives a coarse mottled colouring to the rock. Alteration appears to be, in part, fracture controlled. The volcanic is aphyric.							

\*For features such as foliation, bedding, schistosity, measured from the long axis of the core. / \*Exemples de caractéristiques : foliation, schistosité, stratification. L'angle est mesuré par rapport à l'axe longitudinal de la carotte.

\*Mining Lands Website: [http://www.mndm.gov.on.ca/mndm/mines/lands/default\\_e.asp](http://www.mndm.gov.on.ca/mndm/mines/lands/default_e.asp)

\*Site Web de la Section des terrains miniers : [http://www.mndm.gov.on.ca/mndm/mines/lands/default\\_f.asp](http://www.mndm.gov.on.ca/mndm/mines/lands/default_f.asp)

Footage/Avancement		Rock type / type de roche	Description (Colour, grain size, texture, minerals, alteration, etc.) / Description (Couleur, granulométrie, texture, minéraux, transformation, etc.)	Planar Feature Angle * / Angle des caractéristiques planes	Core Specimen Footage / Longueur en pieds des carottes prélevées	Your Sample No./ N° d'échantillon du prospecteur	Sample Footage / Niveau de prélèvement de l'échantillon (en pieds)		Sample Length / Longueur de l'échantillon	Assays / Analyses minéralurgiques
From/De	To/À						From /De	To /À		
			Unmineralized							
300.5	301.7	Intrusive	Feldspar Porphyry Similar to 295.8-297.1, very blocky. Unmineralized.							
301.7	302.1	Sediments	Fault Zone - Graphitic Argillites Similar to 287.6-288.0 in appearance. Carries 2-4% carbonate-quartz material 3-5% pyrite present as semimassive, fine-grained clots and bands. Last 20cm is competent graphitic argillite. No evidence of sphalerite or galena.							
302.1	310.0	Volcanic	Felsic Volcanic - Rhyolite Medium grey with occasional darker bands - a sparse feature. Aphanitic groundmass. Exhibits a very crude layering structure. Possibly a tuff sequence or tight lapilli sequence. Grades into a breccia section with sulphides at 305.9. 305.9-306.1: MASSIVE SULPHIDE ZONE - Irregular patch of massive pyrrhotite comprising 60% of this 20cm interval. 306.5: Massive pyrrhotite + pyrite lens of irregular shape crossing the core. 305.9-310.0: patch of coarse, tightly pack breccia with 1-3% pyrrhotite + pyrite as scattered, irregular streaks as at 305.3m, and as small patches Lower contact moderately distinct - gradational aspect with 10-12% pyrrhotite			58145 58146 58147 58148 58149 58150	302.1 303.1 303.1 304.0 304.0 305.5 305.5 307.0 307.0 308.5 308.5 310.0	1.0 0.9 1.5 1.5 1.5 1.5		

\*For features such as foliation, bedding, schistosity, measured from the long axis of the core. / \*Exemples de caractéristiques : foliation, schistosité, stratification. L'angle est mesuré par rapport à l'axe longitudinal de la carotte.

"Mining Lands Website: [http://www.mndm.gov.on.ca/mndm/mines/lands/default\\_e.asp](http://www.mndm.gov.on.ca/mndm/mines/lands/default_e.asp)"

"Site Web de la Section des terrains miniers : [http://www.mndm.gov.on.ca/mndm/mines/lands/default\\_f.asp](http://www.mndm.gov.on.ca/mndm/mines/lands/default_f.asp)"

Footage/Avancement		Rock type / type de roche	Description (Colour, grain size, texture, minerals, alteration, etc.) / Description (Couleur, granulométrie, texture, minéraux, transformation, etc.)	Planar Feature Angle ° / Angle des caractéristiques planes	Core Specimen Footage / Longueur en pieds des carottes prélevées	Your Sample No./ N° d'échantillon du prospecteur	Sample Footage / Niveau de prélèvement de l'échantillon (en pieds)		Sample Length / Longueur de l'échantillon	Assays / Analyses minéralurgiques
From/De	To/À						From/De	To/À		
			+ pyrite as coarse disseminations over 10-15cm.							
310.0	322.2	Volcanic	Intermediate Volcanic - Andesite Flow-Breccia			58450	310.0	311.0	1.0	
			This unit has the appearance of an intermediate but could possibly be a felsic volcanic.			62658	311.0	312.5	1.5	
			Medium green-grey angular fragments up to 10-15cm with 10-20% black to grey-black, aphanitic, siliceous matrix material.			62659	312.5	314.0	1.5	
			Massively structured.			62660	314.0	315.5	1.5	
			Carries 1-5% pyrrhotite + pyrite locally, overall concentration only 1%.			62661	315.5	317.0	1.5	
			Moderately hard to siliceous in places, eg 312.6-316.6; changes are gradational.							
			312.6-316.6: more siliceous section of the breccia where the matrix groundmass is only 5% and is comprised of pyrrhotite + pyrite rather than graphitic-looking, blackish material. Breccia itself is a grey colour here.							
			At 316.6 the section grades back into flow-breccia of greener colour and of monolithic composition with no dark matrix component. The infill here is white quartz-carbonate at 3-5%. Sparse pyrrhotite + pyrite.							
			Lower contact sharp but irregular.							
322.2	330.0	Intrusive	Feldspar Porphyry							
			Dark grey-green, fine-grained massive matrix supporting 15% whitish, euhedral to subhedral feldspar phenocrysts up to 4-5mm in size - average 1-2mm.							
			A massive, competent section. Very hard. siliceous rock.							
			Trace to 1% very fine pyrrhotite in the groundmass.							

\*For features such as foliation, bedding, schistosity, measured from the long axis of the core. / \*Exemples de caractéristiques : foliation, schistosité, stratification. L'angle est mesuré par rapport à l'axe longitudinal de la carotte.

"Mining Lands Website: [http://www.mndm.gov.on.ca/mndm/mines/lands/default\\_e.asp](http://www.mndm.gov.on.ca/mndm/mines/lands/default_e.asp)"

"Site Web de la Section des terrains miniers : [http://www.mndm.gov.on.ca/mndm/mines/lands/default\\_f.asp](http://www.mndm.gov.on.ca/mndm/mines/lands/default_f.asp)"



Footage/Avancement		Rock type / type de roche	Description (Colour, grain size, texture, minerals, alteration, etc.) / Description (Couleur, granulométrie, texture, minéraux, transformation, etc.)	Planar Feature Angle ° / Angle des caractéristiques planes	Core Specimen Footage / Longueur en pieds des carottes prélevées	Your Sample No./ N° d'e hantillon du prospecteur	Sample Footage / Niveau de prélèvement de l'échantillon (en pieds)		Sample Length / Longueur de l'échantillon	Assays / Analyses minéralurgiques
From/De	To/À						From/De	To/À		
330.0	372.1	Volcanic	Intermediate Volcanic - Flow-Breccia - Andesite Appearance of an intermediate rock but may be felsic. Similar to 310.0-322.2 with strong internal, breccia-type structures. The matrix is quartz-carbonate to approximately 334.0m after which it is dark and probably graphitic and very siliceous. Sparse sulphides – trace to locally 1% pyrite + pyrrhotite. Exhibits a uniform overall appearance.							
			339.3-341.6: 3-5% pyrrhotite + pyrite as localized to in places pervasive semimassive matrix to lapilli-like and breccia intervals. Lapilli zones are cm-scale rounded fragments ranging between mm and 3-4cm in size.			62662	339.3	340.8	1.5	
			341.6-368.6: A continuous sequence of monolithic, flow-breccia – possibly some pyroclastic material but generally a coarse, irregular mass of angular, fragment- supported fragment shapes with 2-5% black, siliceous sub-matrix. Fragment size ranges from mm up to 10cm. Some exhibit a “crackle” type relationships with adjacent fragments.			62663	340.8	341.6	0.8	
			368.6-372.1: Sulphide-bearing section similar to 339.3-341.6m. Exhibits a more felsic fragmental-type character. Matrixed by pyrrhotite + pyrite - weakly magnetic.			62664	368.6	370.1	1.5	
			Clasts are pocked by fine pyrrhotite +/- pyrite grains giving them a spotted look. Compositionally the lithic fragments are probably similar to the flow-breccia lithology.			62665	370.1	371.6	1.5	
						62666	371.6	373.1	1.5	
372.1	482.1	Volcanic	Intermediate Flow – Dacite to Andesite Same lithology as the volcanic breccia material above.							

\*For features such as foliation, bedding, schistosity, measured from the long axis of the core. / \*Exemples de caractéristiques : foliation, schistosité, stratification. L'angle est mesuré par rapport à l'axe longitudinal de la carotte.

"Mining Lands Website: [http://www.mndm.gov.on.ca/mndm/mines/lands/default\\_e.asp](http://www.mndm.gov.on.ca/mndm/mines/lands/default_e.asp)"

"Site Web de la Section des terrains miniers : [http://www.mndm.gov.on.ca/mndm/mines/lands/default\\_f.asp](http://www.mndm.gov.on.ca/mndm/mines/lands/default_f.asp)"



Footage/Avancement		Rock type / type de roche	Description (Colour, grain size, texture, minerals, alteration, etc.) / Description (Couleur, granulométrie, texture, minéraux, transformation, etc.)	Planar Feature Angle * / Angle des caractéristiques planes	Core Specimen Footage / Longueur en pieds des carottes prélevées	Your Sample No./ N° d'échantillon du prospecteur	Sample Footage / Niveau de prélèvement de l'échantillon (en pieds)		Sample Length / Longueur de l'échantillon	Assays / Analyses minéralurgiques
							From/De	To/À		
			This unit is less distinctly a breccia in appearance – more homogeneous looking. Only rare blackish siliceous matrix material as at 403.85m.							
			Still exhibits a moderate breccia texture but more indistinct – paler shading and matrixed by fine white quartz veinlets in a web-like to lacey pattern.							
			Nil sulphides noted.							
			Faint flow breccias discernable locally and persistent through the section.							
			Unit is hard but not particularly siliceous.							
			Continues uniformly through 423m.							
			Exhibits continuous flow and flow-breccia structures with lacey, mm-scale quartz pockets. fracture and crackle-breccia infilling at 1-3% overall.							
			No mineralization noted.							
			Rare black, siliceous intraflow lenses at cm widths as at 421.2 and 451.15m etc.							
			Massive overall structure.							
			Occasional hyaloclastic texture as at 427.5m.							
			White, lacey quartz pervades the unit throughout at 5-6%. Varies from patchy stringers on mm and sub-cm scale to irregular clots and masses on cm-scale.							
			457.3: Lacey quartz component falls off to about 1% after this meterage.							
			The unit gradually becomes a little more variable in structural appearance and colour – ie more complex but the rock type is persistently the same.							
			Sections on sub-metre scale are deeper green as at 465.4-465.9 and appear to be of a more chloritic composition, possibly intravolcanic sediment.							
			Internal lithic structure is variable with indications of small flow fragmentation localized hyaloclastic material.							
			Lower contact distinct – colour change.							

\*For features such as foliation, bedding, schistosity, measured from the long axis of the core. / \*Exemples de caractéristiques : foliation, schistosité, stratification. L'angle est mesuré par rapport à l'axe longitudinal de la carotte.

"Mining Lands Website: [http://www.mndm.gov.on.ca/mndm/mines/lands/default\\_e.asp](http://www.mndm.gov.on.ca/mndm/mines/lands/default_e.asp)"

"Site Web de la Section des terrains miniers : [http://www.mndm.gov.on.ca/mndm/mines/lands/default\\_f.asp](http://www.mndm.gov.on.ca/mndm/mines/lands/default_f.asp)"

Footage/Avancement		Rock type / type de roche	Description (Colour, grain size, texture, minerals, alteration, etc.) / Description (Couleur, granulométrie, texture, minéraux, transformation, etc.)	Planar Feature Angle * / Angle des caractéristiques planes	Core Specimen Footage / Longueur en pieds des carottes prélevées	Your Sample No./ N° d'échantillon du prospecteur	Sample Footage / Niveau de prélèvement de l'échantillon (en pieds)		Sample Length / Longueur de l'échantillon	Assays/ Analyses minéralurgiques
From/De	To/À						From/De	To/À		
482.1	484.35	Volcanic	Chloritized Volcanic Appearance is similar to volcanic above but colour is more of a medium to deep green with pale highlights. Possibly basal unit with soft flow features. Unmineralized. Lower contact is sharp at 35 degrees. Contact exhibits fine angular breccia fragments on a 1-5mm scale over a 2-3cm width.							
484.35	487.0	Intrusive	Intermediate Dyke - Diorite Fine-grained with what appears to be dark blackish green, variably shaped fragments floating in very scattered distribution, through the groundmass (seen in 6MS-05-3 as well). The groundmass is a dark green-grey colour. Evenly textured throughout and of massive appearance but with subtle fabric. Fragment-like forms range from mm-scale up to 2cm. The groundmass on a cored surface is a fine-grained mix of feldspar and green hornblende. Suggestion of a subtle, coarser feldspar component through the groundmass. The interpreted "fragment" forms are likely inclusions of the dyke itself from the host volcanic. The unit is unusual in appearance – an atypical diorite. Trace amounts of fine pyrite are present in the groundmass. Lower contact is sharp at about 40 degrees.							
487.0	492.05	Volcanic	Intermediate Volcanic Flow - Andesite Similar to 372.1-482.1 Exhibits streaky, low-angle flow features – flow material matrixed by darker							

\*For features such as foliation, bedding, schistosity, measured from the long axis of the core. / \*Exemples de caractéristiques : foliation, schistosité, stratification. L'angle est mesuré par rapport à l'axe longitudinal de la carotte.

"Mining Lands Website: [http://www.mndm.gov.on.ca/mndm/mines/lands/default\\_e.asp](http://www.mndm.gov.on.ca/mndm/mines/lands/default_e.asp)"

"Site Web de la Section des terrains miniers : [http://www.mndm.gov.on.ca/mndm/mines/lands/default\\_f.asp](http://www.mndm.gov.on.ca/mndm/mines/lands/default_f.asp)"

Footage/Avancement		Rock type / type de roche	Description (Colour, grain size, texture, minerals, alteration, etc.) / Description (Couleur, granulométrie, texture, minéraux, transformation, etc.)	Planar Feature Angle ° / Angle des caractéristiques planes	Core Specimen Footage / Longueur en pieds des carottes prélevées	Your Sample No./ N° d'échantillon du prospecteur	Sample Footage / Niveau de prélèvement de l'échantillon (en pieds)		Sample Length / Longueur de l'échantillon	Assays / Analyses minéralurgiques
From/De	To/À						From/De	To/À		
			black-green selvage material.							
			Core angles are 35 degrees.							
			Flow forms are sub-10cm scale separated by streaks of sub-cm width – flame-like wisps of matrix material. Tends to have a streaky colouring of brownish-red ~							
			10%.							
			Lower contact sharp at 25 degrees.							
492.05	495.0	Intrusive	Intermediate Intrusive							
			Distinctive fine-grained groundmass of medium grey colour – with slight brown to greenish cast.							
			Massively textured.							
			Groundmass is a mix of 75% feldspar and 25% hornblende.							
			Set within the groundmass are lath-like crystals up to 2mm long by .1mm wide (8%).							
			Also, dark green hornblende crystal and crystal aggregates from <1mm up to 1cm are present at 5-8% - some are subhedral but mainly they are euhedral.							
			Brownish laths may be mica.							
			Hornblende megacrysts are distinct.							
			Carries 1-2% fine pyrite in the groundmass.							
495.0	500.0	Volcanic	Intermediate Volcanic Flow - Andesite							
			Similar to 487.0-492.05							
			Flow-breccia structures – darker matrix hosts fragment forms, 5% matrix material.							
			Fine-grained, greenish grey colour, moderately hard.							

\*For features such as foliation, bedding, schistosity, measured from the long axis of the core. / \*Exemples de caractéristiques : foliation, schistosité, stratification. L'angle est mesuré par rapport à l'axe longitudinal de la carotte.

"Mining Lands Website: [http://www.mndm.gov.on.ca/mndm/mines/lands/default\\_e.asp](http://www.mndm.gov.on.ca/mndm/mines/lands/default_e.asp)"

"Site Web de la Section des terrains miniers : [http://www.mndm.gov.on.ca/mndm/mines/lands/default\\_f.asp](http://www.mndm.gov.on.ca/mndm/mines/lands/default_f.asp)"





**\*\*\* Certificate of analysis \*\*\***

**Laboratoire Expert Inc.**

750 A rue Saguenay  
 Rouyn-Noranda, Québec  
 Canada, J9X 7B5  
 Telephone : (819) 762-7100, Fax : (819) 762-7510

Date : 2021/12/07

Page : 1 of 1

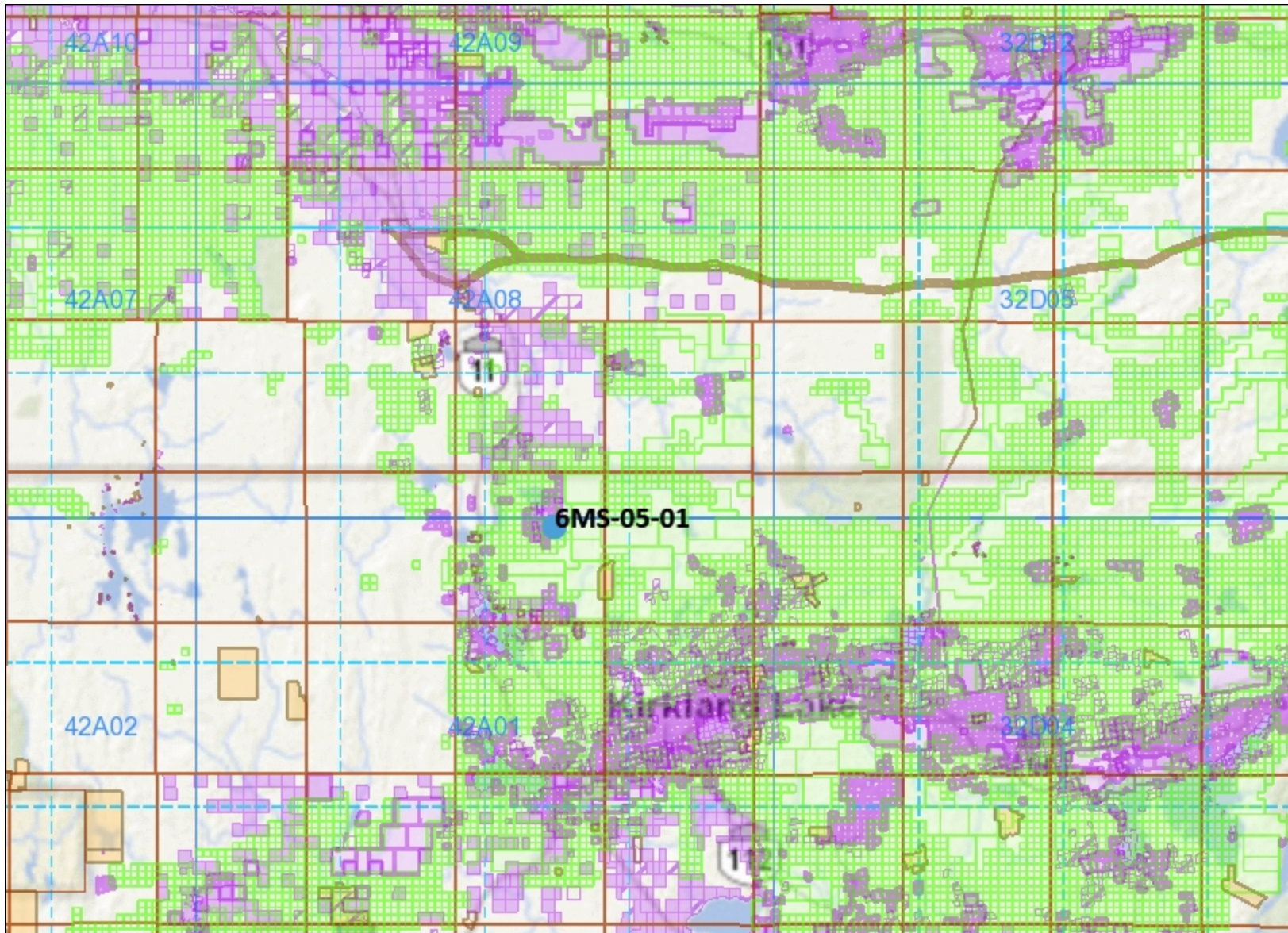
Client : <b>International Explorers and Prospectors Inc.</b> 168 Algonquin East.  Timmins ON, Canada, P4N 1A9 Telephone:	Folder : <b>61970</b>
	Order number :
Addressee : <b>Peter Colbert</b>	No Envoi (Dispatch) :
	Project : <b>AUCUN</b>
Total number of samples : <b>5</b>	

<u>Designation</u>	Au FA-GEO ppb 5	Au-Dup FA-GEO ppb 5	Ag AAT-7 ppm 0.2	Ag-Dup AAT-7 ppm 0.2	Cu AAT-7 ppm 2	Cu-Dup AAT-7 ppm 2	Ni AAT-7 ppm 2	Ni-Dup AAT-7 ppm 2
A19551	<5	<5	<0.2	<0.2	80	82	82	80
A19552	27		1.1		344		167	
A19553	<5		<0.2		141		104	
A19557	7		0.4		1240		1607	
A19558	9		0.6		403		186	

<u>Designation</u>	Zn AAT-7 ppm 2	Zn-Dup AAT-7 ppm 2	Pb AAT-7 ppm 2	Pb-Dup AAT-7 ppm 2	Co AAT-7 ppm 2	Co-Dup AAT-7 ppm 2
A19551	321	311	11	9	46	47
A19552	721		162		53	
A19553	212		16		47	
A19557	89		15		179	
A19558	126		14		59	



Joe Landers, Manager



### Legend

- Provincial Grid Cell**
  - Available
  - Pending
  - Unavailable
- Mining Claim**
  - Mining Claim
  - Boundary Claim
- Alienation**
  - Withdrawal
  - Notice
- ENDM Administrative Boundaries**
  - ENDM Townships and Areas
  - Geographic Lot Fabric
  - UTM Grid 1K
  - UTM Grid 10K
  - Mining Division
  - Mineral Exploration and Development Region
  - CLUPA Protected Area - Far North
  - Resident Geologist District
  - Federal Land Other
  - Native Reserves
- AMIS Sites**
  - AMIS Sites
  - AMIS Features
  - Drill Hole
  - Mineral Occurrences
- MLAS Mining History**
  - Withdrawal - History
  - Notice - History
  - Mining Claim - History
  - Mining Land Tenure - History
  - Legacy Claim
- Provincial Grid**
  - Provincial Grid 250K
  - Provincial Grid 50K
  - Provincial Grid Group
- Land Tenure**
  - Surface Rights
  - Mining Rights
  - Mining and Surface Rights
  - Order-in-Council

Those wishing to register mining claims should consult with the Provincial Mining Recorders' Office of the Ministry of Energy, Northern Development and Mines for additional information on the status of the lands shown hereon. This map is not intended for navigational, survey, or land title determination purposes as the information shown on this map is compiled from various sources. Completeness and accuracy are not guaranteed. Additional information may also be obtained through the local Land Titles or Registry Office, or the Ministry of Natural Resources and Forestry. The information shown is derived from digital data available in the Provincial Mining Recorders' Office at the time of downloading from the Ministry of Energy, Northern Development and Mines web site.



Imagery Copyright Notices: Ontario Ministry of Natural Resources and Forestry; NASA Landsat Program; First Base Solutions Inc.; Aéro-Photo (1961) Inc.; DigitalGlobe Inc.; U.S. Geological Survey.  
© Queen's Printer for Ontario, 2021



5343500N

5343600N

5343700N

5343800N

Maisonville Twp



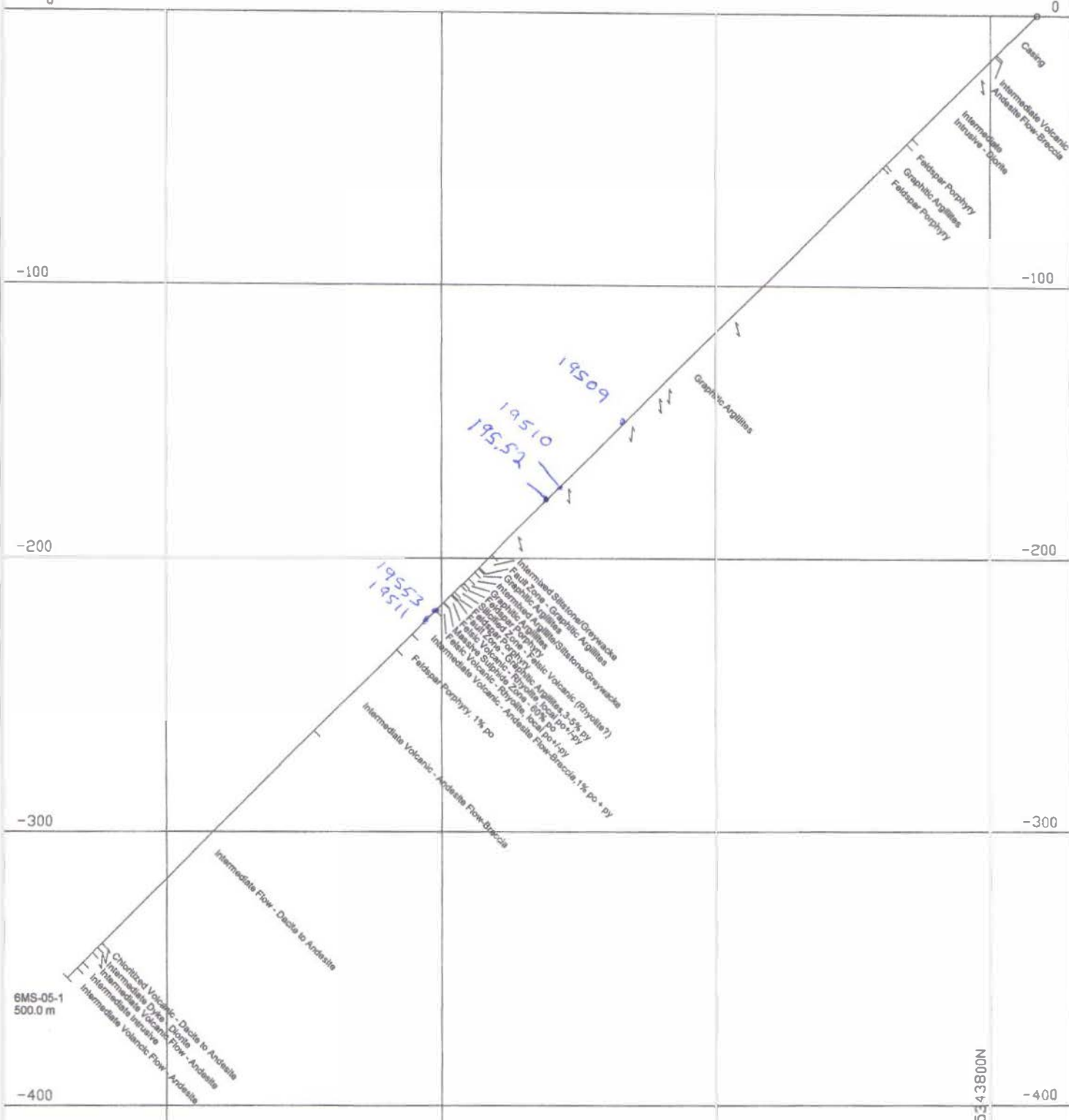
560112E

6MS-05-1

560112E

Collar Grid Location  
L42+00E, 0+25S

L3001439



-100

-200

-300

-400

-100

-200

-300

-400

5343800N

6070205 CANADA INC.  
 GOOSE EGG LAKE - MAISONVILLE TWP  
 SECTION 560112E  
 DRILL HOLE: 6MS-05-1

5343500N

5343600N

5343700N

MASONVILLE TWP  
CON IV L 5 N1/2 NW1/4

HR580

559512E

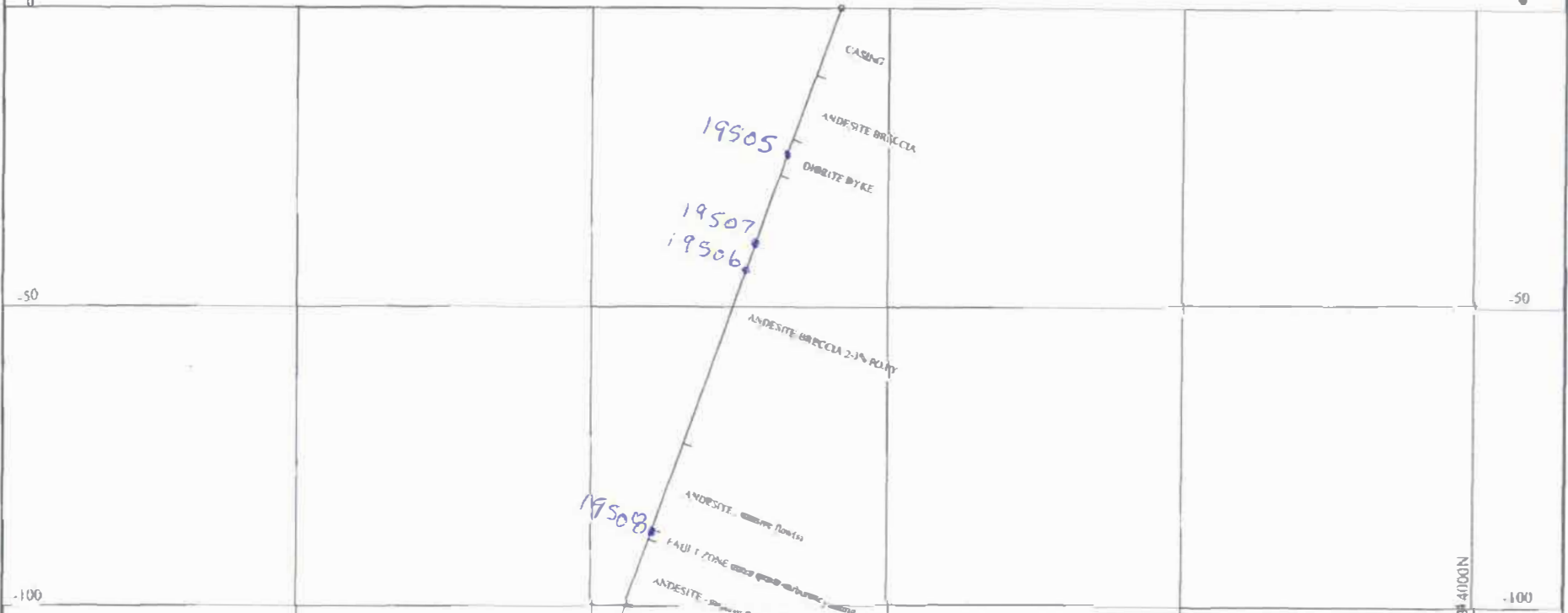
6MS-05-3

559512E

2.30443

L 3001439

L4238



*W. L. ...*

6070205 CANADA INC.

PROJECT: GOOSE EGG LAKE

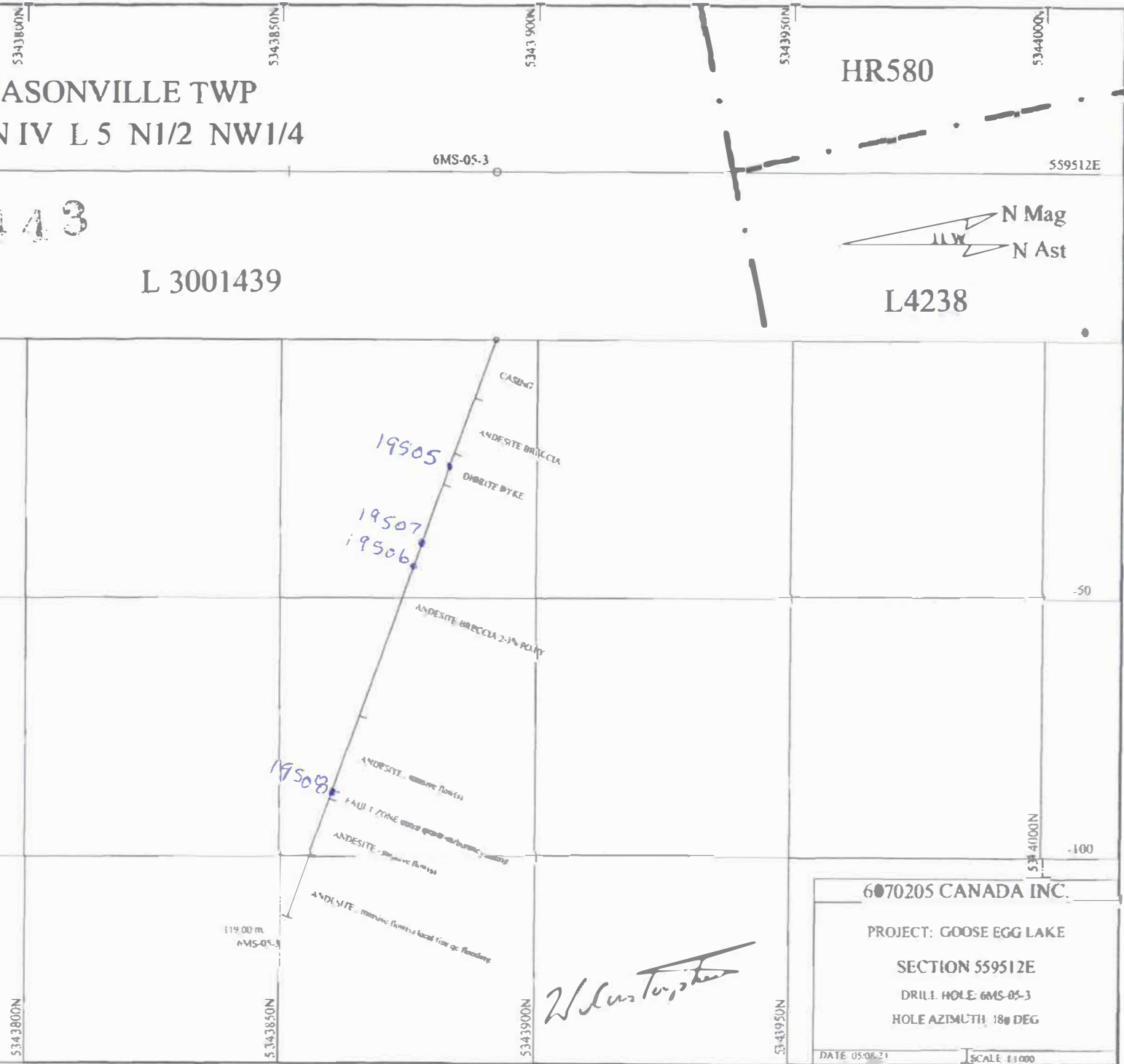
SECTION 559512E

DRILL HOLE: 6MS-05-3

HOLE AZIMUTH: 180 DEG

DATE: 05/08/21

SCALE: 1:1000





6070205 CANADA INC.

GOOSE EGG LAKE PROPERTY

MAISONVILLE TOWNSHIP (G3669)

LARDER LAKE MINING DIVISION

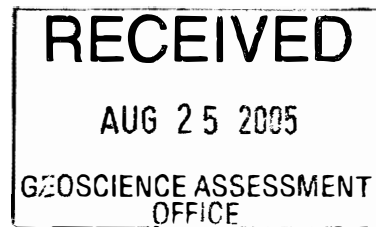
FOR

6070205 CANADA INC.

2. 30443

SUBMITTED BY

LIONEL BONHOMME



UTM ;NAD 83  
ZONE 17U  
0559512 ME  
5343892 MN

TIMMINS ONTARIO

AUGUST 22,2005

SUMMARY:

Numbered company 6070205 CANADA INC completed three diamond drill holes between May 12, 2005 and May 27, 2005 on mining claim L3001439 in Maisonville township. The claim is located in the central portion of the township.

Drill hole 6MS-01 was drilled to a depth of 500 metres, drill hole 6MS-02 was drilled to a depth of 83 metres and drill hole 6MS-03 was drilled to a depth of 119 metres for a total of 702 metres.

The property is located 14 km northwest of Kirkland Lake and can be accessed from Highway 11 at Bourques road to the community centre then southerly for 4 km to property.

This report is authored by Lionel Bonhomme who supervised the work in the field. Lionel Bonhomme resides at 888 Reg Pope Blvd, Timmins, Ontario, P4N 8K8.

Previous Work:

Kerr -Addison Mines Limited drilled 7 Holes in 1965 to 1969.

Ecstall Mining conducted geophysical surveys in 1974.

Questor Surveys Limited flew airborne surveys for Ontario Geological Survey in 1979.

Lacana Mining Limited drilled four holes in 1980.

Joutel Resources completed geological and geophysical surveys in 1988.

Opawica Explorations Inc drilled five holes in 1998.

6070205 Canada Inc. conducted geological and geophysical surveys in 2004.

Prepared by Lionel Bonhomme on behalf of

6070205 Canada Inc.



August 22, 2005

MASONVILLE TWP  
CON IV L 5 N1/2 NW1/4

HR580

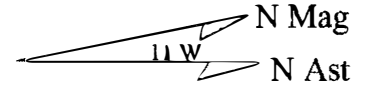
559512E

6MS-05-3

559512E

2.30443

L 3001439



L4238

0

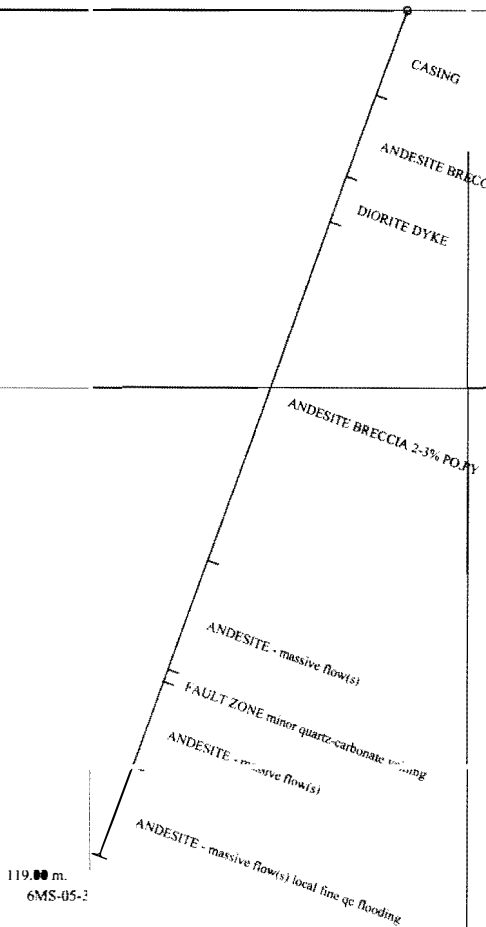
0

-50

-50

-100

-100



*W. Luster, etc.*

6070205 CANADA INC.

PROJECT: GOOSE EGG LAKE

SECTION 559512E

DRILL HOLE: 6MS-05-3

HOLE AZIMUTH: 180 DEG

DATE: 05/08/23

SCALE: 1/1000

5343800N

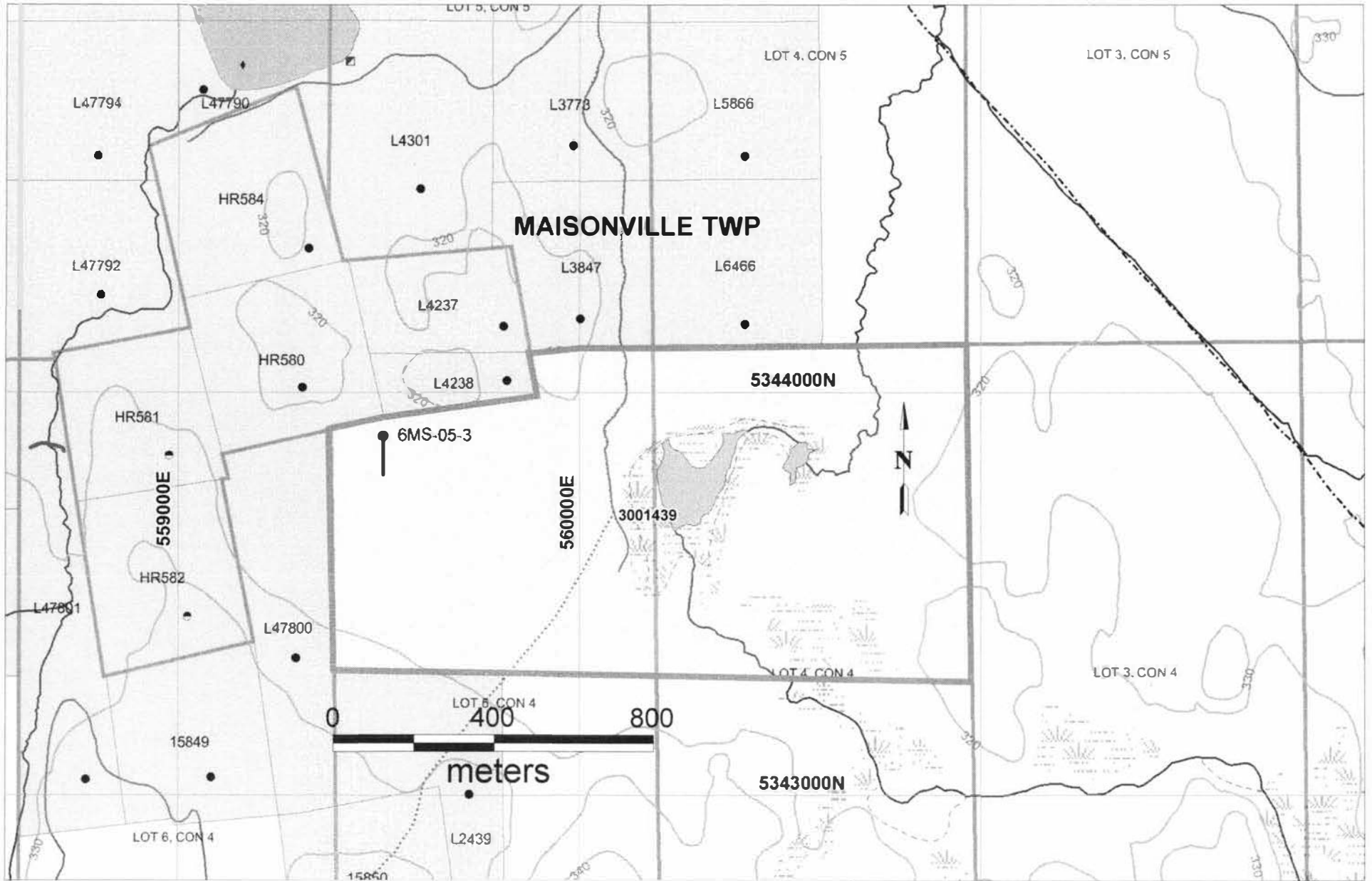
5343850N

5343900N

5343950N

5344000N

2.30443



DRILL HOLE LOCATION MAP

6070205 CANADA INC.

*W. L. ...*





**Diamond Drilling Log / Journal de forage au diamant**

Complete this form and related sketch in duplicate. REMPLIR EN DEUX EXEMPLAIRES LA PRÉSENTE FORMULE ET LE CROQUIS ANNEXÉ

Fill in on every page / Remplir ces cases chaque page

Under section 8 of the Mining Act, this information is used to maintain a public record. Aux termes de l'article 8 de la Loi sur les mines, ces renseignements serviront à tenir à jour les dossiers publics

Drilling Company / Compagnie de forage <b>NOREX DRILLING LTD.</b>	Core Size / Dimensions de la carotte <b>NQ (47.6 mm)</b>	Collar Elevation / Élévation du collier <b>SURFACE</b>	Bearing of hole from true North / Position du forage par rapport au nord vrai <b>180 Deg</b>	Total Meterage / Avancement total du forage <b>119.0 m</b>	Dip of Hole at Inclinaison du forage au <b>-70 Deg</b>	Address/Location where core stored / Adresse/endroit où la carotte est stockée <b>AIRPORT ROAD TIMMINS ON</b>	Map Reference No. / N° de référence sur la carte <b>G-3669</b>	Claim No. / N° de concession minière <b>L 3001439</b>
Date Hole Started / Date de commencement du forage <b>May 24, 2005</b>	Date Completed / Date d'achèvement <b>05/27/2005</b>	Date Logged / Date d'inscription au journal <b>06/23/2005</b>	Logged by (print) / Inscrit par (écrire en lettres moulées) <b>WAYNE CORSTORPHINE</b>	Logged by (Signature) / Inscrit par (signature) 			Location (Twp, Lot, Con or Lat. and Long.) / Emplacement (canton, lot, concession, ou latitude et longitude) <b>MAISONVILLE TWP CON IV L 5 N1/2 NW1/4</b>	UTM: (NAD 83) <b>ZONE 17U 0559512E 5343892N</b>
Exploration Co., Owner or Optionee / Compagnie d'exploration, propriétaire ou titulaire d'option <b>6070205 CANADA INC.</b>							Property Name / Nom de la propriété <b>GOOSE EGG LAKE</b>	

Footage/Avancement		Rock type	Description (Colour, grain size, texture, minerals, alteration, etc.)	Planar Feature Angle * / Angle des caractéristiques planes	Core Specimen Footage / Longueur en pieds des carottes prélevées	Sample No / N° d'échantillon du prospecteur	Sample Meterage / Niveau de prélèvement de l'échantillon (en mètres)	Sample Length / Longueur de l'échantillon (en mètres)	Assays/Analyses minéralurgiques
From/De	To/A	Type de roche	Description (Couleur, granulométrie, texture, minéraux, transformation, etc.)				From/De	To/A	
0.0	12.0	Casing							
12.0	23.5	Volcanic Breccia	Intermediate, andesitic breccia unit. Medium grey, very fine-grained, massive groundmass. Breccia structure is open, crackle-type but fairly tightly packed. Matrix is black, very fine-grained, and siliceous. Some places have whitish quartz-carbonate as part of matrix material. Fragments range from mm to 10-20cm in size and are sub-angular to angular. Groundmass is homogeneous with occasional very fine, whitish feldspar crystal. Estimate 10% matrix material. 12.1-14.1: Whitish, siliceous matrix dominant. Local concentrations of pyrrhotite +/- pyrite, as at 19.6m, as fine-grained, semimassive to massive wisps and well defined patches. Lower contact sharp at 10 deg.						
23.5	29.9	Intermediate Porphyritic Intrusive	Diorite Dyke – Porphyritic. Distinct finer textured contact zones over .5 to .75m – feldspar phenocryst aggregates are finer textured compared to those in central section of unit. Fine-grained groundmass, massive, medium to darkish grey with greenish cast. Homogeneous appearance.						

**RECEIVED**  
AUG 23 2005  
GEOSCIENCE ASSESSMENT OFFICE

\*For features such as foliation, bedding, schistosity, measured from the long axis of the core. \*Exemples de caractéristiques : foliation, schistosité, stratification. L'angle est mesuré par rapport à l'axe longitudinal de la carotte.



**Diamond Drilling Log / Journal de forage au diamant**

Complete this form and related sketch in duplicate. REMPLIR EN DEUX EXEMPLAIRES LA PRÉSENTE FORMULE ET LE CROQUIS ANNEXÉ

Fill in on every page / Remplir ces cases chaque page

Under section 8 of the Mining Act, this information is used to maintain a public record. Aux termes de l'article 8 de la Loi sur les mines, ces renseignements serviront à tenir à jour les dossiers publics.

Drilling Company Compagnie de forage <b>NOREX DRILLING LTD.</b>	Core Size Dimensions de la carotte <b>NQ (47.6 mm)</b>	Collar Elevation Élévation du collier <b>SURFACE</b>	Bearing of hole from true North/Position du forage par rapport au nord vrai <b>180 Deg</b>	Total Meterage Avancement total du forage <b>119.0 m</b>	Dip of Hole at Inclinaison du forage au  <b>-70 Deg</b>	Address/Location where core stored Adresse/endroit où la carotte est stockée <b>AIRPORT ROAD TIMMINS ON</b>	Map Reference No. N° de référence sur la carte <b>G-3669</b>	Claim No. N° de concession minière <b>L 3001439</b>
Date Hole Started Date de commencement du forage <b>May 24, 2005</b>	Date Completed Date d'achèvement <b>05/27/2005</b>	Date Logged Date d'inscription au journal <b>06/23/2005</b>	Logged by (print) Inscrit par (écrire en lettres moulées) <b>WAYNE CORSTORPHINE</b>	Logged by (Signature) Inscrit par (signature)			Location (Twp, Lot, Con. or Lat. and Long.) Emplacement (canton, lot, concession, ou latitude et longitude) <b>MAISONVILLE TWP CON IV L 5 N1/2 NW1/4</b>	
Exploration Co., Owner or Optionee Compagnie d'exploration, propriétaire ou titulaire d'option <b>6070205 CANADA INC.</b>							Property Name Nom de la propriété <b>GOOSE EGG LAKE</b>	

Footage/Avancement	Rock type	Description (Colour, grain size, texture, minerals, alteration, etc.)	Planar Feature Angle * / Angle des caractéristiques	Core Specimen Footage / Longueur en pieds des carottes	Your Sample No. N° d'échantillon du carottier	Sample Meterage Niveau de prélèvement de l'échantillon (en mètres)	Sample Length / Longueur de l'échantillon (en mètres)	Assays/Analyses minéralurgiques
From/De	To/A	Type de roche	Description (Couleur, granulométrie, texture, minéraux, transformation, etc.)	planes	prélevées	From/De	To/A	
29.9	77.6	Volcanic Breccia	Intermediate andesitic breccia. Similar to 12.0-23.5. Matrix is 95% white quartz-carbonate in this section, resembling some parts of 12.0-23.5 section. Sulphide content heavier at 2-3% as coarse to fine patches and disseminations of pyrrhotite +/- pyrite. Breccia is more massive (nonimbricated) and in medium to coarse fragment size range (lacks finer textured sections). Unit continues in uniform fashion through 60m. Note after 51.7m black matrix begins to reappear and mixes with the white quartz-carbonate and gradually quartz-carbonate becomes subordinate over metre-scale widths. In places black matrix nodes fleck the white quartz-carbonate matrix suggesting the white					

\*For features such as foliation, bedding, schistosity, measured from the long axis of the core. \*Exemples de caractéristiques : foliation, schistosité, stratification. L'angle est mesuré par rapport à l'axe longitudinal de la carotte.



**Diamond Drilling Log**

**Journal de forage au diamant**

Complete this form and related sketch in duplicate.  
Remplir en deux exemplaires la présente formule et le croquis annexé

Fill in on every page  
Remplir ces cases chaque page



Under section 8 of the Mining Act, this information is used to maintain a public record. Aux termes de l'article 8 de la Loi sur les mines, ces renseignements serviront à tenir à jour les dossiers publics.

Drilling Company Compagnie de forage <b>NOREX DRILLING LTD.</b>	Core Size Dimensions de la carotte <b>NQ (47.6 mm)</b>	Collar Elevation Élévation du collier <b>SURFACE</b>	Bearing of hole from true North/Position du forage par rapport au nord vrai <b>180 Deg</b>	Total Meterage Avancement total du forage <b>119.0 m</b>	Dip of Hole at Inclinaison du forage au <b>-70 Deg</b>	Address/Location where core stored Adresse/endroit où la carotte est stockée <b>AIRPORT ROAD TIMMINS ON</b>	Map Reference No. N° de référence sur la carte <b>G-3669</b>	Claim No. N° de concession minière <b>L 3001439</b>
Date Hole Started Date de commencement du forage <b>May 24, 2005</b>	Date Completed Date d'achèvement <b>05/27/2005</b>	Date Logged Date d'inscription au journal <b>06/23/2005</b>	Logged by (print) Inscrit par (écrire en lettres moulées) <b>WAYNE CORSTORPHINE</b>	Logged by (Signature) Inscrit par (signature)	Collar/collier M   M   M   M   M	Location (Twp. Lot, Con or Lat and Long.) Emplacement (canton, lot, concession, ou latitude et longitude) <b>MAISONVILLE TWP CON IV L 5 N1/2 NW1/4</b>	Property Name Nom de la propriété <b>GOOSE EGG LAKE</b>	UTM: (NAD 83) <b>ZONE 17U 0559512E 5343892N</b>
Exploration Co., Owner or Optionee Compagnie d'exploration, propriétaire ou titulaire d'option <b>6070205 CANADA INC.</b>								

Footage/Avancement		Rock type	Description (Colour, grain size, texture, minerals, alteration, etc.)	Planar Feature Angle / Angle des caractéristiques	Core Sossman Footage / Longueur en pieds des carottes	Your Sample No N° d'échantillon du prospecteur	Sample Meterage Niveau de prélèvement de l'échantillon (en mètres)	Sample Length Longueur de l'échantillon (en mètres)	Assays/Analyses minéralurgiques
From/De	To/À	Type de roche	Description (Couleur, granulométrie, texture, minéraux, transformation, etc.)	planes	pieds/mètres		From/De	To/À	
77.6	119.0	Intermediate Flow	quartz-carbonate is replacing the black as a secondary alteration. Lower contact is gradational.  Andesite – massive flow Medium grey to greenish grey, massive, fine-grained with occasional areas bearing dark mm-scale, blackish, rounded crystal aggregates – erratic, localized. Homogeneous overall in appearance. Local fracture-infill veining as at 80.1 and 81.6 – 20-40 deg and 1-3cm wide. 92.9-94.6: Fault Zone Broken rubble, minor quartz-carbonate in immediate upper contact host. Nil sulphides. 94.6-106.5: Pervasive fine carbonate seams and veinlets at 2-3% on mm-scale. Random orientations. Nil sulphides. Volcanic exhibits lighter colour through this section – taupish-buff in places. 106.5-119.0: Andesite continues with moderate to locally strong micro-veining and minor flooding as at 114.2-114.4 – silicification with carbonate as pervasive groundmass replacement and vein material. Nil sulphides. Uniform to end of hole.						
119.0			End of Hole						

\*For features such as foliation, bedding, schistosity, measured from the long axis of the core.

\*Exemples de caractéristiques : foliation, schistosité, stratification. L'angle est mesuré par rapport à l'axe longitudinal de la carotte.