

We are committed to providing [accessible customer service](#).

If you need accessible formats or communications supports, please [contact us](#).

Nous tenons à améliorer [l'accessibilité des services à la clientèle](#).

Si vous avez besoin de formats accessibles ou d'aide à la communication, veuillez [nous contacter](#).

2021 Exploration Program

Black Sturgeon Mine (Prospect)

Haycock Township

Kenora Mining Division

**George R. Zebruck BSc. F
Prospector Licence H10002
February 10, 2022**

Table of Contents

	Page
Acknowledgements.....	ii
Introduction.....	1
Description of the Property.....	1
Location and Access.....	2
Geology.....	3
Work History.....	3
Mineralization.....	4
• East Zone.....	4
• Shaft Zone.....	5
• Pogson Claims.....	5
Recent Work by Claimholders.....	5
2021 Exploration Program.....	6
• Sampling 1988 Drill Core.....	6
• Traverses.....	6
• Stripping and Sampling.....	7
Recommendations for work in 2022.....	8

Appendices

Appendix-A

• Description of Drill Core Samples.....	A-1
• Actlabs – Certificate of Analysis.....	A-2
• Assay Results.....	A-3
• Fig. 1 DDH 88-8 cross section showing sampling results location.....	A-4
• Fig. 2 DDH 88-10 Cross Section showing sample results location.....	A-5

Appendix-B

• Description of Channel Samples.....	B-1 to B-4
• Actlabs – Certificate of Analysis.....	B-5
• Assay Results.....	B-6 to B-8
• Fig. 3 Pogson Vein#2 – 2021 Stripping & Sampling.....	B-9
• Fig. 4 Unnamed Vein – 2021 Stripping & Sampling.....	B-10

Appendix-C

• GPS Locations of Old Workings.....	C-1
• Map BS 21-1 Traverses and location of old workings.....	C-2

References

Acknowledgements

In this report I have used the diamond drill hole cross-sections for DDH # 88-8 and 88-10 from a report by J.A. Goodwin and added in the location of and assay results from our sampling in 2021. I would like to thank Craig Ravnaas, Resident Geologist with MNDM for obtaining and providing me with the 1988 drill core during the Covid 19 disruption. I would also like to thank Nelson Granite Limited for allowing me to use their facilities and equipment at their Vermilion Bay plant to split the core.

Location and Access:

The claim is located approximately 3 kilometres northeast of the Kenora Airport on the north shore of Island Lake and lies between Island and Black Sturgeon Lakes. Good access is provided by Highway 671 which traverses through the property. Two natural gas pipelines and a hydro line also traverse the property.



Geology:

The property is underlain by mafic to intermediate volcanics in the northwest and the Island Lake quartz diorite stock in the southeast. The contact between the two lithologies is marked by a hybrid zone.

Work History:

- 1896 - Two shafts, 42 and 36 feet deep, were sunk on gold bearing quartz veins at the Black Sturgeon
- 1897 - 1898 – A new shaft was sunk at the Black Sturgeon location to a depth of 175 feet. Fifty-six and 82 feet of lateral development were done at the 90 foot and 170 foot levels.
- 1899 - 3 miners killed and 1 seriously injured due to failure of the hoist.
Mine closed.
- 1960 - Seven diamond drill holes totalling 608 feet, were drilled by American Yellowknife Mines Ltd.
- 1983 - G. Zebruck stakes 12 claims covering the Princess and Black Sturgeon Prospects. Options property to Kennco Exploration (Canada) Inc. G. Pogson stakes adjoining claims to east.
- 1985 - Kennco Exploration cut 25 kilometres of grid lines, geologically mapped and sampled the property and did 23 kilometres of magnetic and VLF-EM surveys.
- 1986 - 1987 G Pogson discovers 2 quartz veins carries out stripping, trenching and sampling.
Zebuck samples quartz vein material spread along south pipeline during construction of Bell Canada fiber optics line. Assay returns .30 oz./ton. Compass traverse from Pogson trench is in alignment with this material and Black Sturgeon Shaft prompting the collection of humus samples on closest Kennco grid line to their common claim boundary.
- 1987 - Zebruck options property to Kenora Gold Occurrences Inc.
G. Pogson options his property to J. P. Sheridan
- 1988 – Work done by Kenora Gold Occurrences Inc. includes the assaying of the humus samples leading to discovery of the East Zone; stripping and sampling; ground

magnetic and VLF-EM surveys; diamond drilling East Zone (9 holes, 1,211 ft.), Shaft Zone (10 holes, 1,440 ft).

J.P. Sheridan drills 3 holes, 299 metres on the Pogson Claims

1989 - 1990 – G Pogson carries out mechanical stripping, trenching and sampling

1990 - 1991 – Sampling of East zone by Placer Dome and Gold Fields Canadian Mining Limited during property visits.

G. Zebruck sampling and mini bulk sample from East Zone.

2014 - 2015 Canstar Resources - SGH soil survey indicates 3 deep gold anomalies in or proximal to zones of high strain.

Mineralization:

Gold occurs in quartz veins and in the sheared quartz diorite and sheared granodiorite that host them.

East Zone

Assays up to 13.06 oz./ton = 448 g/t were obtained in grab samples by Kenora Gold Occurrences Inc. at the Black Sturgeon East Zone. Placer Dome Exploration took 4 chip samples across the shear at 10 metre intervals. These samples include both quartz vein material as well as sheared granodiorite.

Sample No.	Interval	oz./ton Au			Avg Assay	g/t
		Assay	Rerun	Reject		
E19983	60 cm	0.04			0.04	1.4
E19984	90 cm	1.86	1.50	1.56	1.64	56.2
E19985	180 cm	.46	.46	.88	.60	20.6
E19986	200 cm	.12	.24	.58	.31	10.6

Gold Fields obtained similar results in their sampling of the East Zone

Zebuck took a 20 kg. composite mini bulk sample of vein material across and along the vein. This was sent to Casmyn Research and Engineering for initial metallurgical testing to get a better understanding of the potential grade of the deposit (eliminate bias of the nugget effect).

Four cyanide leach tests (bottle roll) gave a recovery of 98.65% of the gold in 24 hours at a grade of .30 oz./ton Au. There was little solution loss indicating a relative free milling gold situation.

Shaft Zone:

There is a large muck pile surrounding the collar of the shaft. Presumably this is mostly waste material with the ore being either milled on site or sent to the Reduction Works in Kenora. Sampling of this material returned erratic gold values mostly low but some samples returned as high as .52 oz/ton or 18 grams. The vein was exposed by mechanical stripping over a distance of 350 feet. Chip samples along the vein gave trace to 2 g/t.

Eight diamond drill holes from 4 set ups were drilled at this location. Only 3 of the holes intersected the vein. At least some of the remaining 5 holes appear to have been terminated short of the targeted vein. Best intersection was .22 oz./ton or 7.5 g/t. These holes were collared approximately 75 feet south of the shaft. Of interest is that at three of the four set ups the holes collared into quartz diorite or sheared quartz diorite that carried gold values as high as .09 oz/ton or 3 g/ton. The holes caught the edge of a new untested mineralized zone of undetermined width. Past exploration concentrated on the high-grade quartz veins while little attention until recently was paid to the exploration for low grade high tonnage gold deposits. There was no follow up to test this new mineralized zone so it remains an exploration target.

Pogson Claims:

G. Pogson held claims and explored the area east of the East Zone. He discovered at least 2 parallel veins striking about 75 degrees about 180 metres apart one of which we believe to be the extension of the Black Sturgeon vein. Both veins carried gold values with the best assay of the north vein being .98 oz/ton or 34 g/ton across 1 metre while the south vein had a best assay of .26 oz/ton or 9 g/ton over a 76-centimetre sample interval. If the north vein is proven to be the extension of the Black Sturgeon vein then the strike length would be at least 1.7 kilometres. The Black Sturgeon Mine, the East Zone and the Pogson discoveries are all located on the 8-cell mining claim 553220.

Recent Work by Claimholders:

In 2019 and 2020 the claimholders carried out grassroots prospecting on this claim which consisted of locating and sampling some of the old workings as well as exploring for new mineralized outcrops. The results of the sampling done confirmed the high-grade gold values found in the old workings. A report of this work was submitted for assessment credits in early 2021.

2021 Exploration Program

Sampling 1988 Drill Core:

Kenora Gold Occurrences drilled 19 holes on their Black Sturgeon property in 1988. Of particular interest to us was DDH 88-08 and DDH 88-10. These two holes set back about 70 feet south of the Black Sturgeon vein collared into the edge of a new mineralized structure of undetermined width. Assay values up to 3 grams/ton were obtained in sheared to altered diorite at the drill collar. At the time these holes were drilled there was little interest in exploring for low grade high tonnage gold deposits. There were some long sections of sheared and altered diorite further down these holes which had not been assayed at the time and merited a second look. The objective of this sampling was to confirm whether this mineralization was more widespread or if the mineralization encountered at the top of the holes was indeed a separate new zone.

The core from drill holes DDH 88-08 and DDH 88-10 was examined and seven samples approximately 1 meter in length were split using a diamond bladed saw. All samples contained disseminated pyrite in quartz diorite. A description of the samples, their position in the drill hole column Fig. 1 and 2, and assay certificate and results can be found in Appendix A.

Results:

Assays returned only low gold values with one anomalous section of 230 ppb.

Traverses:

Prospecting was initiated in early spring of 2021 with a view to locate and accurately map old workings using a GPS, and to prospect for any mineralized zones encountered along the northwest shore of Island Lake. The last serious work done on the property was in the early 1990's and many old pits and trenches had become overgrown and difficult to find. In the past all the old workings were referenced to the nearest claim post or to a cut grid. None of these reference points remain today so an accurate location and evaluation of the old workings is necessary prior to moving on to more serious new work.

The Kenora area experienced very dry conditions in 2020 with most lake levels dropping several feet. The winter of 2020-2021 was mild with very little snowfall. These conditions provided an opportunity to begin our exploration activities in early spring even though there was some snow on the ground. The water level on Island Lake had dropped approximately 2 feet or 60 centimetres. The lake remained ice covered with no snow on it and snow at the shoreline had melted up to the nearest vegetation. These conditions were ideal for prospecting the shoreline to examine rock types and possible new mineralized zones previously not visible when water levels were higher.

March 23, 2021 – A traverse of the area in the vicinity of the Pogson trench was conducted. The Pogson trench vein is believed to be the extension of the Black Sturgeon shear and vein system. GPS co-ordinates were noted for workings located at the Pogson trench as

well as pits and trenches found to the west-southwest. The Pogson south vein or Pog 2 was also located and co-ordinates noted.

Sample No. 1035352 was taken from a blasted boulder from the north pipeline trench which contained a 50 cm. wide sheared quartz vein carrying abundant pyrite. The location of this boulder was UTM: 0405150 mE, 5518514 mN and the vein in-situ must be nearby but could not be observed due to oberburden. The sample assayed 978 ppb gold.

March 24, 2021 – Prospecting around the Pog. 2 vein was carried out to search for additional workings or vein outcroppings. GPS co-ordinates were obtained for the shaft and trenches on the shaft zone and trenching on the east zone.

March 26, 2021 – A traverse was conducted along the northwest shoreline of Island Lake. Prospecting along the west side of Island Lake starting at Sturgeon Creek and traversing south the predominant rock type encountered was diorite and quartz diorite. A red granite outcrop was observed at UTM: 0404736 mE, 5518449 mN. Light coloured intrusive rocks were encountered on a point on the shoreline at UTM: 0404778 mE and 5518039 mN. From Sturgeon Creek traversing south, then east along the north shore of Island Lake, granitic rocks were observed on the narrow point about 70 metres from the outlet. White quartz float with abundant pyrite was found in several locations among the boulders along the shore but no veins were observed amongst the rubble. Their location is noted on the traverse map.

Map BS 21-1 shows the location of traverses as well as accurate locations of pits and trenches including the Black Sturgeon shaft and trench, east zone trenches, the Pogson trench and associated workings to the west-southwest, the Pog. 2 vein and the location of mineralized float.

Stripping and Sampling

Stripping and sampling was carried out on the Pog 2 vein as well as an unnamed vein located at the junction of a hydro line with the north pipeline. A map of this work along with rock types, sampling locations and assay results are illustrated in Fig. 1 Pog 2 Vein and Fig. 2 the unnamed vein.

The Pog 2 vein was discovered by Gordon Pogson in 1986. The assessment work files indicate that Pogson took 2 assays, one on the stripped area which ran trace and another sample on what appears to be the extension of the vein to the west which ran .25 oz./ton or about 7 grams. We observed channel sampling cuts in a number of places across parts of the vein but could not find any results of this work in the assessment files. The property was optioned by Pogson to J.P. Sheridan-Scramble Mining who drilled two holes on this vein and although the drill logs are in the assessment files none of the assay results were filed.

Our work consisted of cleaning off the outcrop that was previously stripped by Pogson and widening this out to expose the wall rocks using pick shovel and broom. The vein strikes 80 degrees. The rock sequence is a north wall of altered quartz diorite to granodiorite, followed by a laminated quartz vein, sheared quartz diorite with fine disseminated pyrite, a barren looking quartz vein and a southern wall of feldspar porphyry. Contacts are sharp separated by narrow shears.

Channel samples were cut using a diamond bladed rock saw at 3-meter intervals across the rock package. Samples were taken across each of the rock types within the vein structure, but the wall rocks were not sampled. The best assay results were from the laminated quartz vein with a best assay of 3990 ppb. or almost 4 grams per ton Au. Sheared quartz diorite had assay values up to 1680 ppb. And the southernmost barren looking quartz vein also had gold values up to 1720 ppb.

The unnamed vein is located at the junction of the north pipeline and a hydro-line at UTM: 0404202 mE 5518485 mN Zone 15. Stripping and sampling was carried out on June 9th. The vein consists of quartz in a rusty shear zone hosted by feldspar porphyry. The quartz vein assayed slightly better than 1000 ppb Au in all three samples taken while the feldspar porphyry containing some pyrite was anomalous at 200 ppb Au.

Sample descriptions, assay certificate and assay results, with accompanying maps Fig. 3 & Fig 4 can be found in Appendix B

Results:

Grass roots prospecting at the Black Sturgeon in 2021 was successful in finding more of the old workings and getting an accurate location for them. Stripping and sampling confirmed the widespread distribution of gold on the property.

Recommendation for work in 2022:

- Continue to locate and accurately map old workings.
- Strip and sample any new finds as well as old workings that show potential.
- Mechanically strip and or diamond drill the new structure located 25 metres south of the Black Sturgeon shaft.
- Cut a base line from the Black Sturgeon shaft south at 160 deg. to the south boundary of the property.
- Carry out humus sampling along this baseline to locate gold bearing structures obscured by overburden.

APPENDIX - A

Description of Drill Core Samples

Sample No. 10353342

Hole No. BS 88-08

From 94' 4" to 97' 10"

Assay result – 51 ppb

- Quartz diorite with about 5% pyrite, odd narrow quartz veinlet

Sample No.10353343

Hole No. BS 88-10

From 78' to 81' 8"

Assay result – 5 ppb

- Quartz diorite with 5 – 10% pyrite, feldspars have a slight pink colouration – potassium alteration? Plus unidentified black mineral, brassy coloured sulphide mineral in vugs.

Sample No. 10353344

Hole No. BS 88-10

From 108' to 112' 2"

Assay result - <5 ppb

- Coarse grained altered diorite with 10% pyrite. Feldspars show some potassium alteration.

Sample No. 10353345

Hole No. BS 88-08

From 98' to 100' 10"

Assay result – 16 ppb

- Quartz diorite with 5 - 10% pyrite

Sample No. 10353346

Hole No. BS 88-08

From 100' 10" to 104' 6"

Assay result – 24 ppb

- Quartz diorite with 5% pyrite some shearing

Sample No. 10353347

Hole No. BS 88-08

From 104' 6" to 107' 8"

Assay result – 230 ppb

- Quartz diorite with <5% pyrite, minor potassium feldspar crystals or alteration

Quality Analysis ...



Innovative Technologies

Report No.: A21-13186
 Report Date: 08-Sep-21
 Date Submitted: 06-Jul-21
 Your Reference:

George Zebruck
 1349 Airport Road
 Kenora Ontario
 Canada

ATTN: George Zebruck

CERTIFICATE OF ANALYSIS

26 Core samples were submitted for analysis.

The following analytical package(s) were requested:		Testing Date:
1F2-Tbay	QOP Total (Total Digestion ICPOES)	2021-09-03 12:26:35

REPORT A21-13186

This report may be reproduced without our consent. If only selected portions of the report are reproduced, permission must be obtained. If no instructions were given at time of sample submittal regarding excess material, it will be discarded within 90 days of this report. Our liability is limited solely to the analytical cost of these analyses. Test results are representative only of material submitted for analysis.

Notes:

If value exceeds upper limit we recommend reassay by fire assay gravimetric-Code 1A3

Values which exceed the upper limit should be assayed for accurate numbers.



LabID: 673

ACTIVATION LABORATORIES LTD.

1201 Walsh Street West, Thunder Bay, Ontario, Canada, P7E 4X6
 TELEPHONE +807 622-6707 or +1.888.228.5227 FAX +1.905.648.9613
 E-MAIL Tbay@actlabs.com ACTLABS GROUP WEBSITE www.actlabs.com

CERTIFIED BY:

A handwritten signature in black ink, appearing to read "Emmanuel Esemé".

Emmanuel Esemé, Ph.D.
 Quality Control Coordinator

Preliminary Report
Activation Laboratories

Report Number: A21-04581

Report Date: 29/3/2021

Analyte Symbol	Au
Unit Symbol	ppb
Detection Limit	5
Analysis Method	FA-AA
1035338	9
1035339	9
1035340	< 5
1035341	157
1035342	51
1035343	5
1035344	< 5
1035345	16
1035346	24
1035347	230

A-3

South

North

Figure 2

A - 5

SURFACE

BL 0

0+50 N

1+00 N

1+50 N

2+00 N

2+50 N

New Mineralized Zone →

Undetermined Width

SURFACE TRACE OF BLACK STURGEON VEIN

88-9
88-10
(26' W)

0.03
4.6

5 PPb

<5 PPb

88-9
(147')

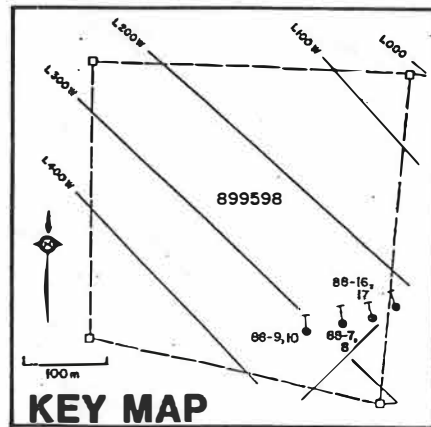
88-10
(158')

LEGEND

- 1 Granodiorite
- 2 Sheared granodiorite
- 3 Quartz vein
- 4 Diorite
- 5 Sheared & altered diorite
- 6 Intermediate dyke
- 7 Mafic volcanic
- 8 Granite aplite
- 9 Sheared & altered mafic volcanic
- 10 Felsic sill
- 11 Calcite vein & Magnetite, sulphides
- 12 Gabbro
- 13 Andesite fragmental
- 14 Carbonatized andesite fragmental
- 15 Dacitic tuff

0.10 oz/ton Au
4.2 sample length (feet)

2.12345
dup



SCALE: 1" = 20'



KENORA GOLD OCCURRENCES INC.

PRINCESS/BLACK STURGEON PROPERTY

Haycock Township, District of Kenora
Northwestern Ontario

Diamond Drill Hole
Cross-Section 16+50W
DDH# 88-9,88-10

LOOKING WEST

DATE: JAN. 1989

SCALE: 1" = 20'

FIGURE# 14

South

North

Figure 1

A - 4

SURFACE

BL 0

0+50 N

1+00 N

1+50 N

2+00 N

2+50 N

-50'

-100'

-150'

New Mineralized Zone →

Undetermined Width

88-7
88-8
(6' W)

0.02 / 2.3 0.09 / 3.3

SURFACE TRACE OF
BLACK STURGEON VEIN

51 PPb

16 PPb

24 PPb

230 PPb

0.22 / 2.2

0.10 / 1.9

0.06 / 1.7

88-7
(127')

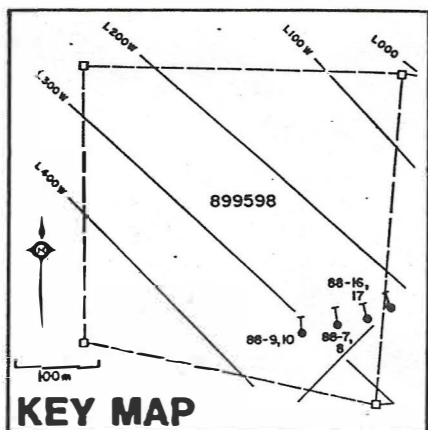
88-8
(148')

LEGEND

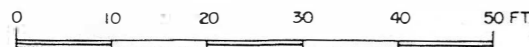
- 1 Granodiorite
- 2 Sheared granodiorite
- 3 Quartz vein
- 4 Diorite
- 5 Sheared & altered diorite
- 6 Intermediate dyke
- 7 Mafic volcanic
- 8 Granite aplite
- 9 Sheared & altered mafic volcanic
- 10 Felsic sill
- 11 Calcite vein & Magnetite, sulphides
- 12 Gabbro
- 13 Andesite fragmental
- 14 Carbonatized andesite fragmental
- 15 Dacitic tuff

0.10 oz/ton Au
4.2 sample length (feet)

2.12345
dup



SCALE: 1" = 20'



KENORA GOLD OCCURRENCES INC.
PRINCESS/BLACK STURGEON PROPERTY
 Haycock Township, District of Kenora
 Northwestern Ontario

**Diamond Drill Hole
 Cross-Section 15+50W
 DDH# 88-7,88-8**

LOOKING WEST

DATE: JAN. 1989 SCALE: 1" = 20' FIGURE# 13

APPENDIX - B

Description of Channel Samples

Pogson #2 Vein: UTM: 0405605 mE 5518384 mN Zone 15

Sample No. – 1035357

Location: Black Sturgeon – Pog 2 – Cut 1 - 0 to .77 metres

- Laminated grey quartz vein with reddish orange hematite staining or potassic alteration. Less than 1% pyrite found in black fracture seams along with sericite and chlorite. The wall rock consists of altered quartz diorite with pyrite.

Results: a 162 ppb Au *

b 204 ppb Au *

Sample No. – 1035358

Location: Black Sturgeon – Pog 2 – Cut 2 – 0 to 1.00 metres

- Laminated grey quartz vein with a similar description to Sample 1035357. The wall rock consisted of quartz diorite and granodiorite with an odd spot of magnetite.

Results: a 1,720 ppb Au *

b 2,470 ppb Au*

Sample No. – 1035359

Location: Black Sturgeon – Pog 2 – Cut 2 – 1.00 to 1.90 metres

- Fine grained altered and fractured quartz diorite with 1 – 2% pyrite in fracture planes. Chlorite and potassic alteration in places along with a few narrow grey quartz veins.

Results: 112 ppb Au

Sample No. – 1035360

Location: Black Sturgeon – Pog 2 – Cut 2 – 1.90 to 2.40 metres

- Light grey barren looking quartz vein with odd fleck of pyrite

Results: 72 ppb Au

Sample No. – 1035361

Location: Black Sturgeon – Pog 2 – Cut 3 – 0 to .45 metres

- Laminated grey, barren looking quartz vein with some potassic alteration, minor amounts of pyrite in fractures with darker sheared quartz diorite having up to 5% pyrite in places.

Results: 3,990 ppb Au

*** Note – a and b are subsamples taken from crushed material of the parent sample from different crushed splits. This was done to see how much variation there was within the same sample and if there was noticeable nugget affect. The biggest difference was in sample 1035369 with a 44.8% difference, seconded by sample 1035358 at 43.6%. Were guessing that this is not due to nugget effect but normal assay variation within a sample.**

Sample No. – 1035362

Location: Black Sturgeon – Pog 2 – Cut 3 - .45 to 1.45 metres

- Fine grained quartz diorite with up to 5% pyrite with red stained quartz stringers and chlorite

Results: 258 ppb Au

Sample No. – 1035363

Location: Black Sturgeon – Pog 2 – Cut 3 – 1.45 to 1.95 metres

- Grey to pinkish laminated quartz vein fractured in places with small amounts of pyrite predominately in fracture planes. Wall rocks are mafic with potassic alteration.

Results: 84 ppb Au

Sample No. – 1035364

Location: Black Sturgeon – Pog 2 – Cut 4 – 0 to .50 metres

- Grey fractured barren looking quartz containing small amounts of pyrite. Wall rock is quartz diorite where pyrite is more abundant.

Results: 648 ppb Au

Sample No. – 1035365

Location: Black Sturgeon – Pog 2 – Cut 4 - .50 to 1.20 metres

- Sheared quartz diorite with 5 – 10% pyrite containing 30% grey to reddish stained quartz veins and fragments.

Results: a 256 ppb Au*

b 268 ppb Au*

Sample No. – 1035366

Location: Black Sturgeon – Pog 2 – Cut 4 – 1.20 to 1.40 metres

- Grey glassy barren looking quartz vein with minor pyrite in fractures. Wall rocks are quartz diorite with potassic alteration and > 5% pyrite.

Results: 242 ppb Au

Sample No. – 1035367

Location: Black Sturgeon – Pog 2 – Cut 5 – 0 to .60 metres

- Laminated quartz vein with pyrite in fracture planes and in dark quartz diorite fracture fillings.

Results: 756 ppb Au

Sample No. – 1035368

Location: Black Sturgeon – Pog 2 – Cut 5 - .60 to 1.05 metres

- White to greyish barren looking quartz vein with rusty fracture planes, and odd speck of pyrite <1%.

Results: 1,720 ppb Au

Sample No. – 1035369

Location: Black Sturgeon – Pog 2 – Cut 5 – 1.05 to 1.60 metres

- Banded, sheared quartz diorite with up to 5% pyrite contains odd quartz veins with a little pyrite. Rock shows some potassic alteration. Unidentified white fibrous crystals with green rims noted.

Results: a 1,160 ppb Au *

b 1,680 ppb Au *

Unnamed Vein: UTM: 0405202 mE 5518485 mN Zone 15

Sample No. – 1035371

Location: Black Sturgeon – Unnamed Vein – Cut 1 – 0 to .30 metres

- Blue-grey quartz vein with 10% pyrite and potassic alteration in sheared quartz - feldspar porphyry.

Results: a 1,100 ppb Au *

b 1,050 ppb Au *

Sample No. – 1035372

Location: Black Sturgeon – Unnamed Vein – Cut 1 - .30 to 1.20 metres

- Feldspar porphyry with 1% pyrite.

Results: 200 ppb Au

Sample No. – 1035373

Location: Black Sturgeon – Unnamed Vein – Cut 2 – 0 to .45 metres

- Sheared and fractured blue-gray quartz vein with up to 10% pyrite in feldspar porphyry wall rock.

Results: 1,190 ppb Au

Grab Sample: UTM: 0405150 mE 5518514 mN Zone 15

Sample No. – 1035352

Location: Black Sturgeon – Large blasted rock fragment on north pipeline

- .50 metre quartz vein sheared with abundant pyrite

Result: 978 ppb Au

Quality Analysis ...**Innovative Technologies**

Report No.: A21-13186
Report Date: 08-Sep-21
Date Submitted: 06-Jul-21
Your Reference:

George Zebruck
1349 Airport Road
Kenora Ontario
Canada

ATTN: George Zebruck

CERTIFICATE OF ANALYSIS

26 Core samples were submitted for analysis.

The following analytical package(s) were requested:		Testing Date:
1A2-Dryden	QOP AA-Au (Au - Fire Assay AA)	2021-08-11 11:00:28
1A3-Dryden	QOP AA-Au (Au - Fire Assay Gravimetric)	2021-08-13 13:05:51

REPORT **A21-13186**

This report may be reproduced without our consent. If only selected portions of the report are reproduced, permission must be obtained. If no instructions were given at time of sample submittal regarding excess material, it will be discarded within 90 days of this report. Our liability is limited solely to the analytical cost of these analyses. Test results are representative only of material submitted for analysis.

Notes:

If value exceeds upper limit we recommend reassay by fire assay gravimetric-Code 1A3

Values which exceed the upper limit should be assayed for accurate numbers.



ACTIVATION LABORATORIES LTD.
 264 Government Road, Dryden, Ontario, Canada, P8N 2R3
 TELEPHONE +807 223-6168 or +1.888.228.5227 FAX +1.905.648.9613
 E-MAIL Dryden@actlabs.com ACTLABS GROUP WEBSITE www.actlabs.com

CERTIFIED BY:

Emmanuel Esemé, Ph.D.
 Quality Control Coordinator

**Preliminary Report
Activation Laboratories**

Report Number: A21-13186

Report Date: 16/8/2021

Analyte Symbol	Au	Au
Unit Symbol	ppb	g/tonne
Detection Limit	5	0.03
Analysis Method	FA-AA	FA-GRA
+ 1035356a	> 5000	12.4
+ 1035356b	> 5000	11.9
* 1035357a	162	
* 1035357b	204	
* 1035358a	1720	
* 1035358b	2470	
* 1035359	112	
* 1035360	72	
* 1035362	258	
* 1035363	84	
* 1035364	648	
* 1035365a	256	
* 1035365b	268	
* 1035366	242	
* 1035367	756	
* 1035368	1720	
* 1035369a	1160	
* 1035369b	1680	
+ 1035370	< 5	
* 1035371a	1100	
* 1035371b	1050	
* 1035372	200	
* 1035373	1190	
- 1035374	< 5	
- 1035375	< 5	
* 1035361	3990	

* BLACK STURGEON
+ TRIUMPH
- SCUILL

Results

Activation Laboratories Ltd.

Report: A21-13186

Analyte Symbol	Au	Ag	Al	As	Ba	Be	Bi	Ca	Cd	Co	Cr	Cu	Fe	Ga	K	Mg	Li	Mn	Mo	Na	Ni	P	Pb	
Unit Symbol	ppb	ppm	%	ppm	ppm	ppm	ppm	%	ppm	ppm	ppm	ppm	%	ppm	%	%	ppm	ppm	ppm	%	ppm	%	ppm	
Lower Limit	5	0.3	0.01	3	7	1	2	0.01	0.3	1	1	1	0.01	1	0.01	0.01	1	1	1	0.01	1	0.001	3	
Method Code	FA-AA	TD-ICP	TD-ICP	TD-ICP	TD-ICP	TD-ICP	TD-ICP	TD-ICP	TD-ICP	TD-ICP	TD-ICP	TD-ICP	TD-ICP	TD-ICP	TD-ICP	TD-ICP	TD-ICP	TD-ICP	TD-ICP	TD-ICP	TD-ICP	TD-ICP	TD-ICP	
1035356a	> 5000																							
1035356b	> 5000																							
1035357a	162																							
1035357b	204																							
1035358a	1720																							
1035358b	2470																							
1035359	112																							
1035360	72																							
1035362	258																							
1035363	84																							
1035364	648																							
1035365a	256																							
1035365b	268																							
1035366	242																							
1035367	756																							
1035368	1720																							
1035369a	1160																							
1035369b	1680																							
1035370	< 5	< 0.3	7.87	< 3	< 7	< 1	< 2	0.52	< 0.3	10	13	42	5.00	21	< 0.01	2.14	4	408	< 1	0.81	5	0.013	< 3	
1035371a	1100																							
1035371b	1050																							
1035372	200																							
1035373	1190																							
1035374	< 5																							
1035375	< 5																							
1035361	3990																							

Results

Activation Laboratories Ltd.

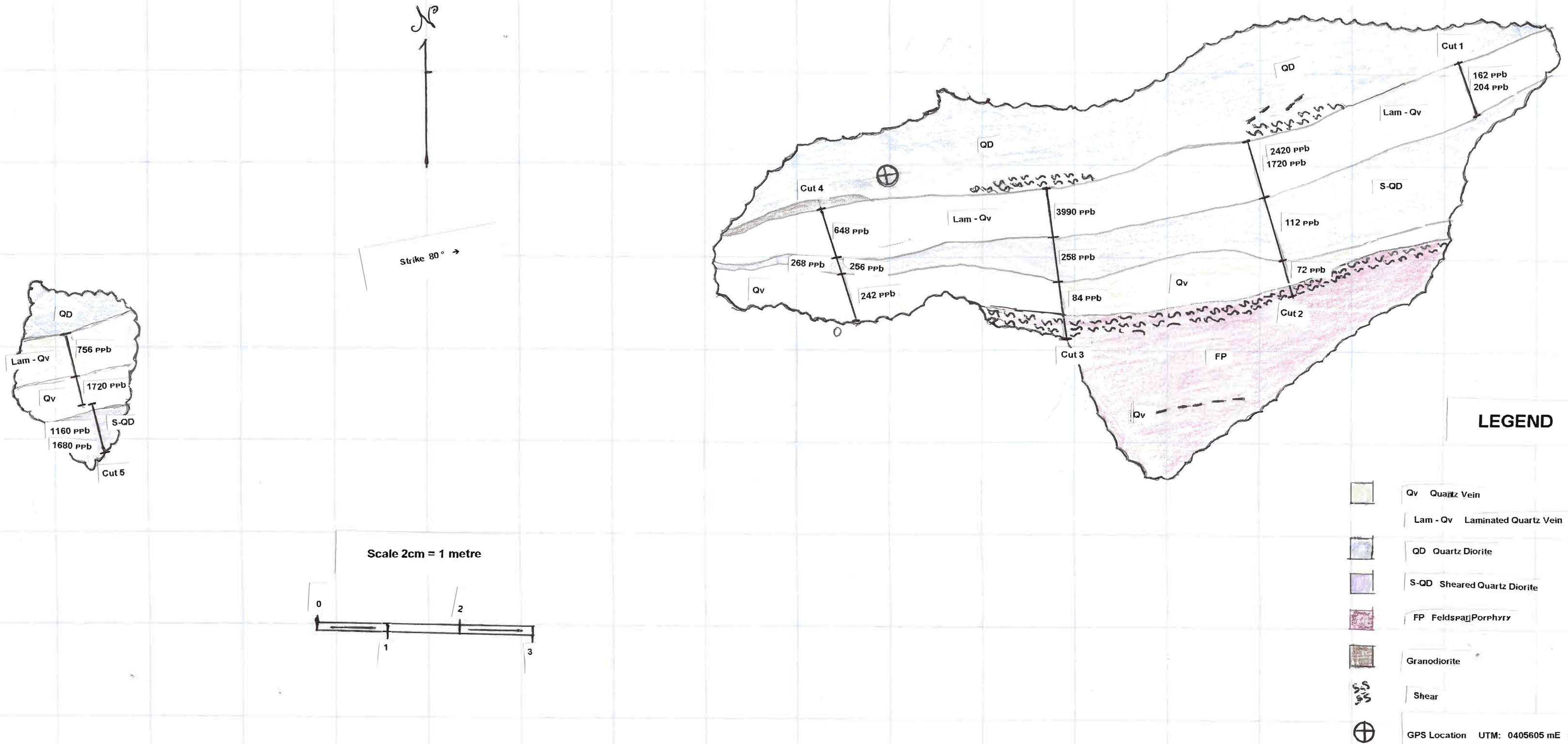
Report: A21-13186

Analyte Symbol	Sb	S	Sc	Sr	Te	Ti	Tl	U	V	W	Y	Zn	Zr	Au
Unit Symbol	ppm	%	ppm	ppm	ppm	%	ppm	ppm	ppm	ppm	ppm	ppm	ppm	g/tonne
Lower Limit	5	0.01	4	1	2	0.01	5	10	2	5	1	1	5	0.03
Method Code	TD-ICP	TD-ICP	TD-ICP	TD-ICP	TD-ICP	TD-ICP	TD-ICP	TD-ICP	TD-ICP	TD-ICP	TD-ICP	TD-ICP	TD-ICP	FA- GRA
1035356a														12.4
1035356b														11.9
1035357a														
1035357b														
1035358a														
1035358b														
1035359														
1035360														
1035362														
1035363														
1035364														
1035365a														
1035365b														
1035366														
1035367														
1035368														
1035369a														
1035369b														
1035370	< 5	0.19	27	135	< 2	0.35	< 5	< 10	327	< 5	4	69	17	
1035371a														
1035371b														
1035372														
1035373														
1035374														
1035375														
1035361														

Figure 3 Pogson Vein # 2

2021 Stripping & Sampling

B - 9

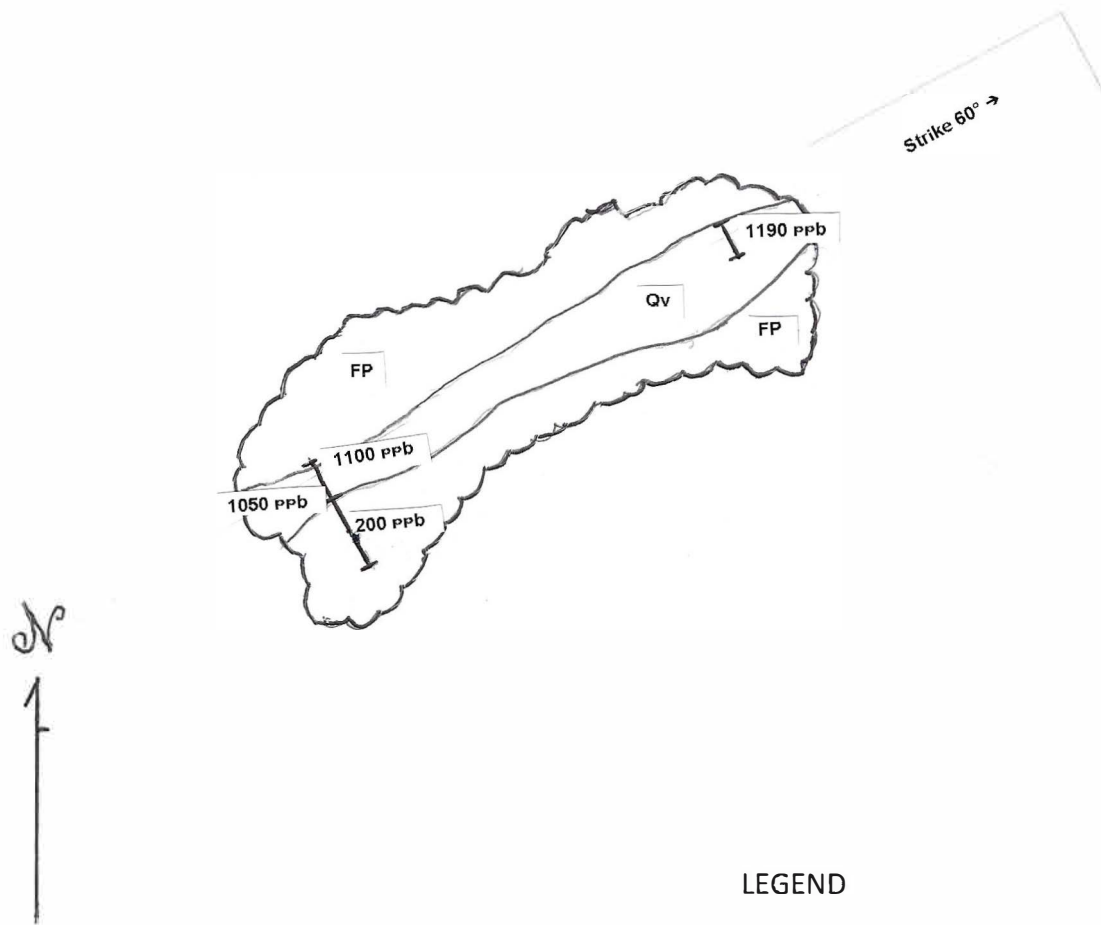


Unnamed Vein

Figure 4

2021 Stripping & Sampling

Location: UTM: 0405202 mE 5518485 mN



LEGEND

- FP Feldspar Porphyry
- Qv Quartz vein in rusty shear

Scale 1:50



APPENDIX - C

GPS Locations of Old Workings

Shaft Zone

- Black Sturgeon shaft UTM: 0404482 mE 5518331 mN Zone 15
- Trench extends to UTM: 0404550 mE 5518350 mN

East Zone

- Trench UTM: 0404859 mE 5518401 mN to UTM: 0404865 mE 5518398 mN
- Trench UTM: 0404871 mE 5518400 mN to UTM: 0404892 mE 5518403 mN
- Cross Trench UTM: 0404908 mE 5518400 mN to UTM: 0404906 mE 5518412 mN

Pogson Trench

- Trench UTM: 0405542 mE 5518653 mN to UTM: 0405484 mE 5518632 mN
- Continues to UTM: 0405457 mE 5518630 mN
- Cross Trench UTM: 0405530 mE 5518644 mN to UTM: 0405528 mE 5518660 mN
- Cross Trench UTM: 0405477 mE 5518629 mN to UTM: 0405473 mE 5518617 mN
- Pits along strike UTM: 0405319 mE 5518575 mN
UTM: 0405319 mE 5518569 mN
- Cross trenches along strike UTM: 0405322 mE 5518570 mN
UTM: 0405312 mE 5518574 mN

Unnamed Vein

- Stripping UTM: 0405202 mE 5518485 mN
- Pog. Trench UTM: 0405258 mE 5518504 mN to UTM: 0405277 mE 55185115mN

Pog 2 Vein

- Stripping UTM: 0405610 mE 5518384 mN
and UTM: 0405594 mE 5518382 mN

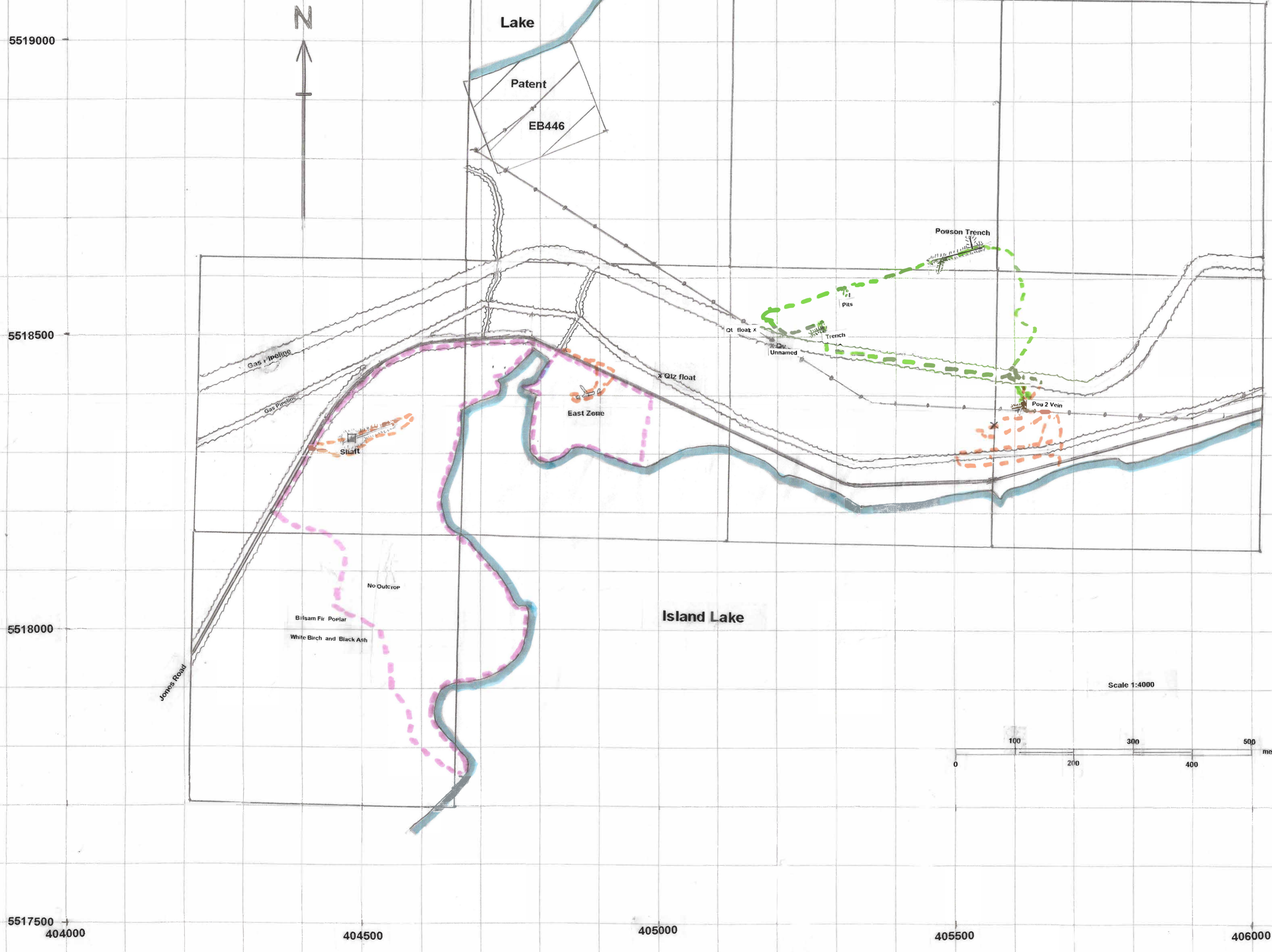
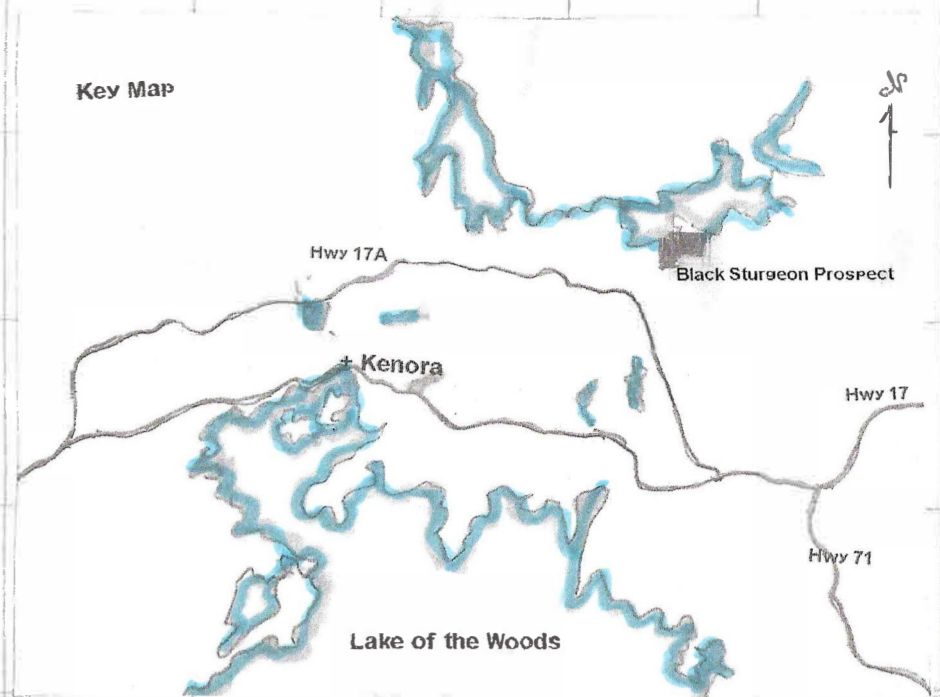
Mineralized Blasted Rock

- South Pipeline UTM: 0405003 mE 5518433 mN
- North Pipeline UTM: 0405215 mE 5518483 mN

BLACK STURGEON PROSPECT

Mining Claim 553320

8 cells



LEGEND

- Traverse
- March 23, 2021 (Green dashed line)
 - March 24, 2021 (Orange dashed line)
 - March 26, 2021 (Pink dashed line)

G. Zebruck
MAR 15, 2021

References

- 1960: American Yellowknife Mines Limited
Diamond Drilling – Princess Black Sturgeon Property
- 1985: Suchanek C.
Kennco Explorations (Canada) Ltd.
Geological Report – Zebruck Option
- 1988: Davies, J.C. and Smith, P.M.
The Geological Setting of Gold Occurrences in the Lake of the Woods Area;
Ontario Geological Survey, Open File Report 5695.
- 1988: Jagodits Frank L.
Kenora Gold Occurrences Inc.
Ground Magnetic and VLF Surveys – Princess, Black Sturgeon - Rajah, Roseman
Properties – Zebruck Option
- 1988: Kuehnbaum R.M. for J.P. Sheridan
Scramble Mining – Madeleine Mines Ltd.
Diamond Drilling – Pogson Property
- 1989: Goodwin J.A.
Kenora Gold Occurrences Inc.
Geochemical Sampling, Geophysics, Trenching and Diamond Drilling
Princess/Black Sturgeon Gold Property – Zebruck Option
- 1988: Pogson Gordon E.
1989: OPAP Reports – Prospecting, Overburden Stripping, Bedrock Trenching,
1990: Geochemical Sampling
1991: - Haycock Township – Black Sturgeon Property
1992:
- 1992: Zebruck George R.
OPAP Report – Prospecting, Geochemical Sampling, Metallurgical Testing,
Bulk Sampling
Princess, Black Sturgeon Property
- 2014: Canstar Resources Inc.
Actlabs – 3D SGH Soil Survey

2015: Canstar Resources Inc.
Pleson Geoscience – Soil Sampling Survey

2021: Zebruck, George R. and Zebruck, Richard J.
Grass Roots Prospecting
Black Sturgeon Mine Property

**Grass Roots Prospecting – Black Sturgeon Property
2021**

Statement of Expenditures

<u>Date</u>	<u>Prospector</u>	<u>Activity</u>	<u>Details</u>	<u>Amount</u>
Mar. 03	G. Zebruck	Procure drill core from Core Library - Ret. Mar. 31	½ day	\$ 200
Mar. 04	"	Examine core and mark for sampling	1 day	\$ 400
Mar. 13	"	Split core – sawing @ Nelson’s Vermilion Bay	1 day	\$ 400
Mar. 15	"	Prepare base map for Black Sturgeon Property	1 day	\$ 400
Mar. 17	"	Took samples to Actlabs in Dryden ON	½ day	\$ 200
Mar. 23	"	Prospecting - area of Pogson North Trench	1 day	\$ 400
Mar. 24	"	" - Shaft zone, East zone, Pog. 2	1 day	\$ 400
Mar. 26	"	" - Northwest shore of Island Lake	1 day	\$ 400
May 23	G. Zebruck	Stripping Pog. 2 Vein	½ day	\$ 200
	R. Zebruck	"	½ day	\$ 175
May 27	G. Zebruck	Stripping & Saw sampling Pog. 2 Vein	½ day	\$ 200
	R. Zebruck	" "	½ day	\$ 175
Jun. 01	G. Zebruck	Saw sampling Pog. 2 Vein	1 day	\$ 400
	R. Zebruck	" "	1 day	\$ 350
Jun. 09	G. Zebruck	Stripping & Saw Sampling – Unnamed Vein	½ day	\$ 200
	R. Zebruck	" "	½ day	\$ 175
July 04	G. Zebruck	Examination and description of samples	½ day	\$ 200
July 06	"	Took samples to Actlabs in Dryden ON	½ day	\$ 200
July 09	"	Grid, measured, geo. mapped Pog. 2 vein in field	1 day	\$ 400
Jan. 19 – Feb. 10	G. Zebruck	Report and Maps	5 days	\$2,000

Total Grass Roots Prospecting (not doubled) \$ 7,475

Other expenses:	Mileage 1070 kilometres @ \$.50/km.....	\$ 535
	Consumables – 2 diamond saw blades.....	\$ 264
	Assays.....	\$ 938
	Total other expense	\$ 1,737