

We are committed to providing [accessible customer service](#).

If you need accessible formats or communications supports, please [contact us](#).

Nous tenons à améliorer [l'accessibilité des services à la clientèle](#).

Si vous avez besoin de formats accessibles ou d'aide à la communication, veuillez [nous contacter](#).

N.T.S. 32D05NE

**GRASS ROOTS PROSPECTING REPORT
FIELD OF DREAMS PROPERTY
LARDER LAKE MINING DIVISION
HOLLOWAY-MARRIOTT-TANNAHILL TOWNSHIPS, ONTARIO**

**By:
Robert Dillman
Mount Brydges, Ontario
&
Jim Renaud
London, Ontario**

April 2, 2022

I N D E X

	page
Summary	2
Location and Access	2
Claim Logistics	4
Land Status and Topography	6
Regional and Local Geology	6
History of Exploration	8
Survey Dates and Personnel	9
Survey Logistics	9
Field Pictures and Rock Samples	12
Survey Results	16
Discussion of Results	16
Conclusions and Recommendations	17
References	18
Certificates of Author's	19
Figure 1. Property Location Map	3
Figure 2. Claim Map	5
Figure 3. Geology Map	7
Table 1: GPS Data: Waypoints & Geological Observations	10
Table 2: CAT Data: Geological Observations	11
Table 3: Rock Sample Descriptions, Locations and Assay Results	11
APPENDIX	
ASSAY CERTIFICATE	20
WAYPOINT & TRAVERSE LOCATION MAP: scale 1 : 5,000	29
GEOLOGY & SURFACE FEATURES MAP scale 1 : 5,000	30

Summary

This report summarizes the results of prospecting in the east section of the Field of Dreams (FOD) Property located at the junction of Holloway, Marriott and Tannahill townships, Ontario. The survey was performed by property owners: Robert Dillman and Dr. Jim Renaud. The work was completed in 3 days between October 22, 2021 to October 24, 2021. Approximately 3 km were traversed. Sections of the following claims were prospected:

claim 538208, cell 32D05J179	Holloway Twp.	October 22, 2021
claim 538209, cell 32D05J180	Marriott Twp.	October 22, 2021
claim 556447, cell 32D05J216	Holloway Twp.	October 23, 2021
claim 556449, cell 32D05J236	Holloway Twp.	October 23, 2021
claim 221813, cell 32D05J215	Holloway Twp.	October 23, 2021
claim 538209, cell 32D05J180	Marriott Twp.	October 23, 2021
claim 538208, cell 32D05J198	Holloway Twp.	October 23, 2021
claim 288548, cell 32D05J276	Tannahill Twp.	October 24, 2021
claim 175384, cell 32D05J256	Tannahill Twp.	October 24, 2021
claim 556449, cell 32D05J236	Holloway Twp.	October 24, 2021

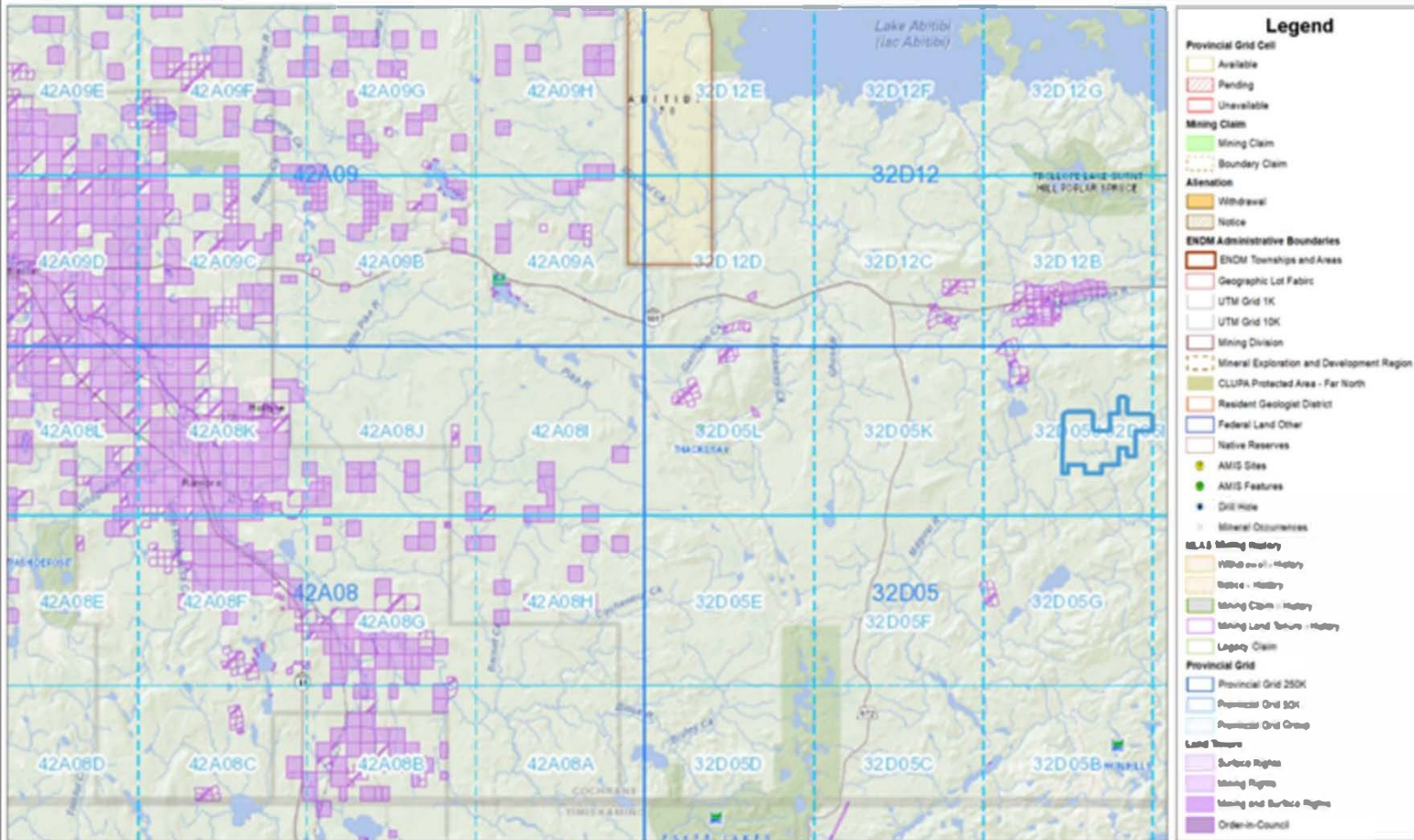
Outcrop exposure is sparse in the region. Rocks encountered during survey consisted of a mafic metavolcanic sequence of fine to coarse grained basaltic flows, pillowed flows, vesicular flows and flow top breccia. No areas of sulphide mineralization, veining, alteration, shearing or faulting were observed. Some boulders of carbonated and sheared mafic metavolcanic rock with specular hematite, minor green mica/ fuchsite and disseminated pyrite were found on claim 288548, cell 32D05J276.

Ten (10) rock samples were collected on the property. Assays for gold ranged 0.002 to 0.009 ppm Au. One rock sample of the boulders with carbonate alteration found on claim 288548 assayed 0.016 ppm Au.

Location and Access

The Field of Dreams (FOD) Property is located at the junction of Holloway, Marriott and Tannahill townships in the Larder Lake Mining Division, Ontario. The property is located approximately 60 kilometres east of the town of Matheson (Figure 1).

The property can be reached from the town of Matheson by travelling east on Highway 101 for approximately 59 km to the intersection of Magusi/ Roscoe Road. Travel south on the Magusi/ Roscoe Road. The Field of Dreams Property crosses the road approximately 7.7 km south of Highway 101.



Those wishing to register mining claims should consult with the Provincial Mining Recorders' Office of the Ministry of Energy, Northern Development and Mines for additional information on the status of the lands shown herein. This map is not intended for registration, survey, or land title determination purposes as the information shown on this map is compiled from various sources. Completeness and accuracy are not guaranteed. Additional information may also be obtained through the local Land Titles or Registry Office, or the Ministry of Natural Resources and Forestry. The information shown is derived from digital data available in the Provincial Mining Recorders' Office at the time of downloading from the Ministry of Energy, Northern Development and Mines web site.

Imagery Copyright Notices: Ontario Ministry of Natural Resources and Forestry, NASA Landsat Program, First Base Solutions Inc., Aero-Photo (1961) Inc., DigitalGlobe Inc., U.S. Geological Survey.
© Queen's Printer for Ontario, 2021



Claim Logistics

Figure 2 outlines the extent of the FOD Property. The property consists of 60 cells and 10 boundary cells located in Holloway, Tannahill and Marriott townships. The survey was performed on the following sections of the property:

claim 538208, cell 32D05J179	Holloway Twp.	October 22, 2021
claim 538209, cell 32D05J180	Marriott Twp.	October 22, 2021
claim 556447, cell 32D05J216	Holloway Twp.	October 23, 2021
claim 556449, cell 32D05J236	Holloway Twp.	October 23, 2021
claim 221813, cell 32D05J215	Holloway Twp.	October 23, 2021
claim 538209, cell 32D05J180	Marriott Twp.	October 23, 2021
claim 538208, cell 32D05J198	Holloway Twp.	October 23, 2021
claim 288548, cell 32D05J276	Tannahill Twp.	October 24, 2021
claim 175384, cell 32D05J256	Tannahill Twp.	October 24, 2021
claim 556449, cell 32D05J236	Holloway Twp.	October 24, 2021

The FOD Property covers a contiguous area of approximately 1,390 hectares.

All claims comprising the Field of Dreams Property are equally owned by:

Dr. Jim Renaud of London, Ontario

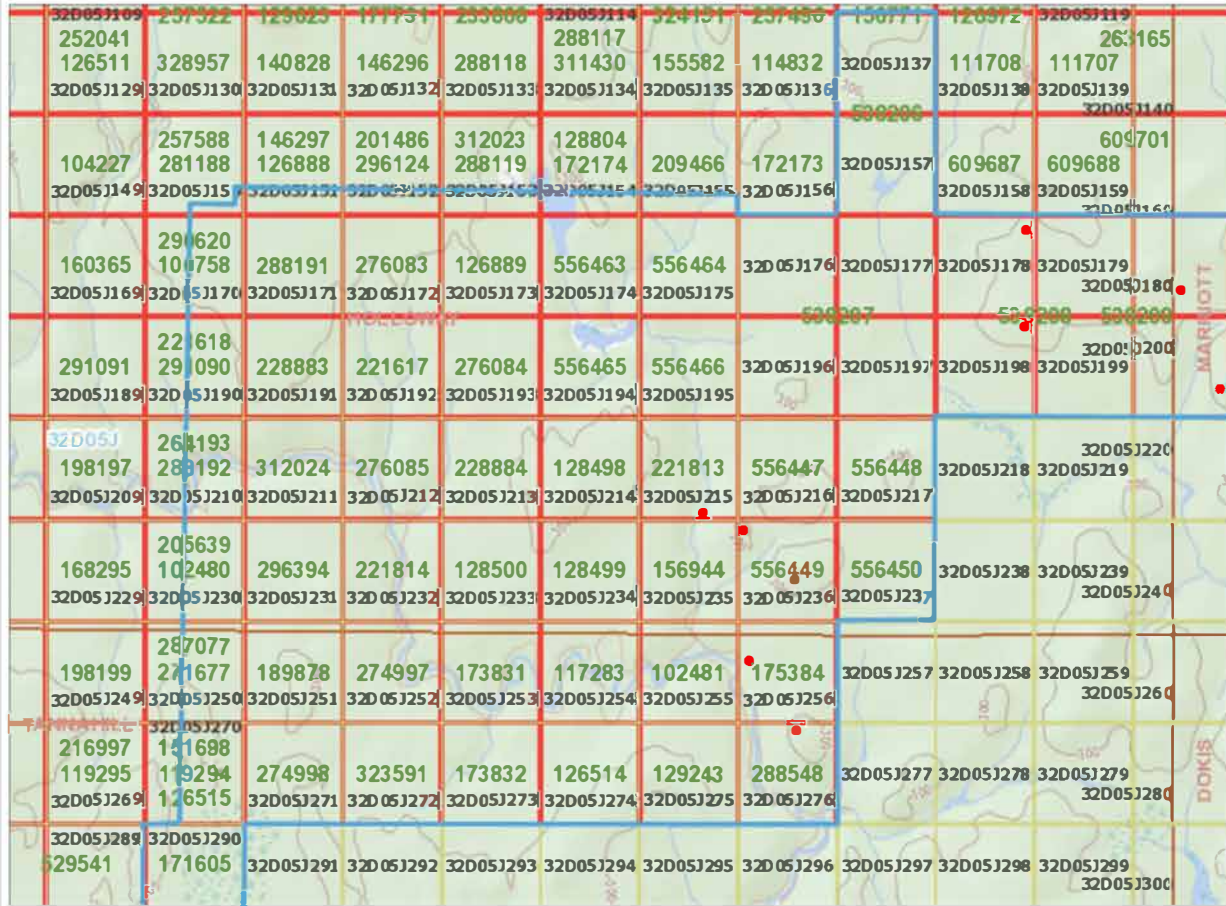
Robert J. Dillman of Mount Brydges, Ontario



MINISTRY OF ENERGY, NORTHERN
DEVELOPMENT AND MINES
MLAS Map Viewer

Figure 2. Claim Map

Notes: **FIELD OF DREAMS
PROPERTY
HOLLOWAY - TANNAHILL TWP.'S**



Legend

- Provincial Grid Cell**
 - Available
 - Pending
 - Unavailable
- Mining Claim**
 - Mining Claim
 - Boundary Claim
- Alienation**
 - Withdrawal
 - Notice
- ENDM Administrative Boundaries**
 - ENDM Townships and Areas
 - Geographic Lot Fabric
 - UTM Grid 1K
 - UTM Grid 10K
 - Mining Division
 - Mineral Exploration and Development Region
 - CLUPA Protected Area - Far North
 - Resident Geologist District
 - Federal Land Other
 - Native Reserves
 - AMIS Sites
 - AMIS Features
 - DnR Hole
 - Mineral Occurrences
- MLAS Mining History**
 - Withdrawal - History
 - Notice - History
 - Mining Claim - History
 - Mining Land Tenure - History
 - Legacy Claim
- Provincial Grid**
 - Provincial Grid 250K
 - Provincial Grid 50K
 - Provincial Grid Group
- Land Tenure**
 - Surface Rights
 - Mining Rights
 - Mining and Surface Rights
 - Order-in-Council

- Field of Dreams Property
- Traverse Locations



Land Status and Topography

The FOD Property is situated entirely on Crown Land. The property is uninhabited. There are no buildings or electrical powerlines. The Magusi / Roscoe Road crosses the central region of the property.

The FOD Property is relatively flat and considered gentle topography. The property is at mean elevation of 280 metres above sea level (ABS). Lower elevations such along the Magusi River and some creeks are at an elevation of 270 metres ABS. Higher elevations of hill tops range 300 metres ABS.

Most of the survey area has been logged within the last 2 decades. Some areas are partially reforested with spruce trees. Other areas are meadow-like with grass, alder, and sparse spruce trees. There are small patches of uncut forest with large spruce, poplar and balsam trees.

Much of the area traversed is covered by clay overburden. Boulder till is rare. Outcrops are rare also and are mostly found in areas of higher elevation.

Regional and Local Geology

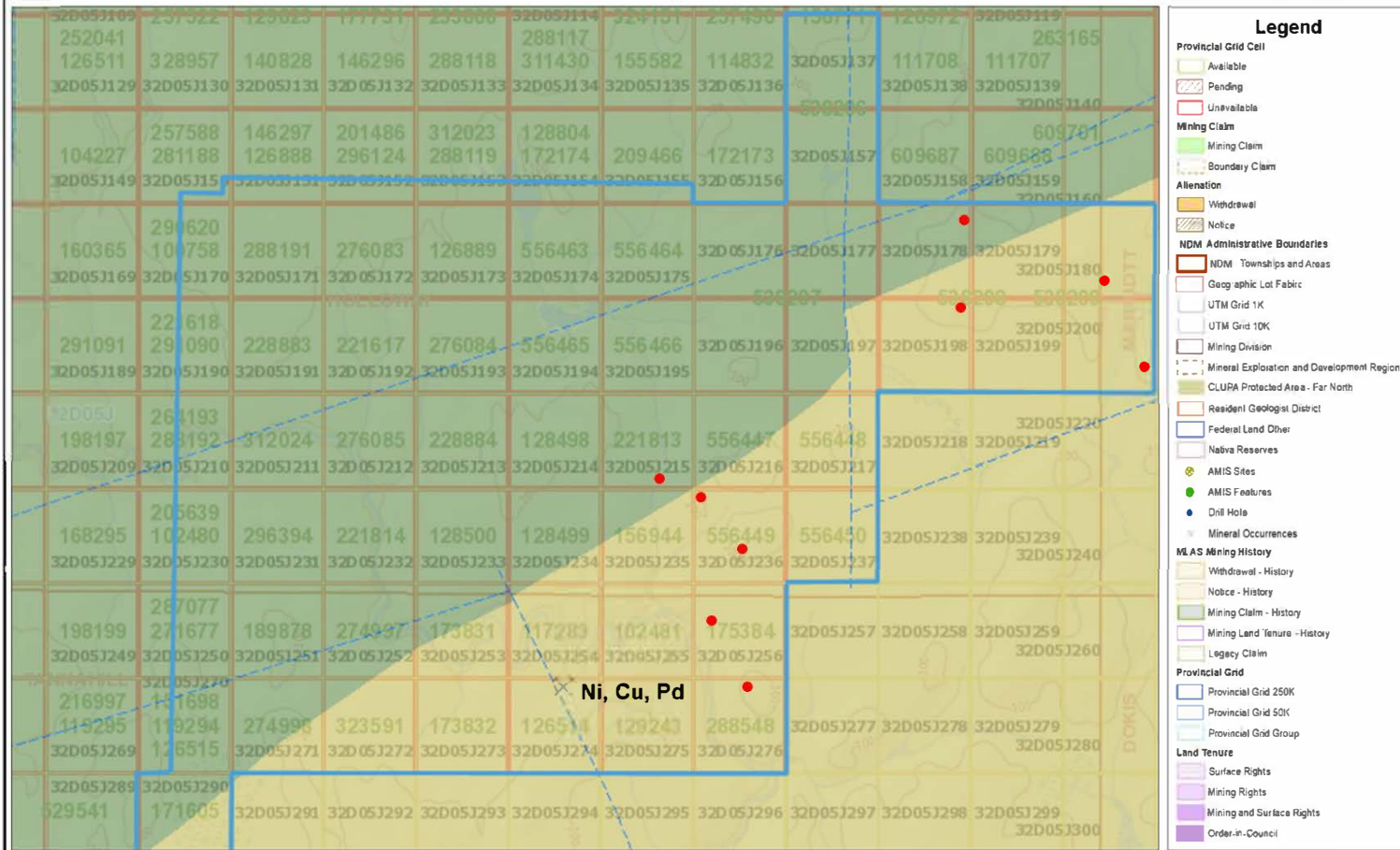
The FOD Property is in the Harker-Holloway section of the Abitibi Greenstone Belt. The property is underlain by Archean units of the Lower and Upper Blake River assemblage dated 2704 to 2696 Ma (Figure 3). Rock units consist mostly of massive to pillowed, vesicular and brecciated flows of mafic metavolcanic rocks intruded by gabbroic sills and plutons and crossed by north to northwest striking diabase dikes.

The Field of Dreams Property sits roughly 7 km south of the Destor Porcupine Fault Zone. The property is believed to be crossed by northeast trending faults and shear zones and by younger north trending faults which have displaced older structures and rock units. West of the property, some of the northeast trending shear zones host gold mineralization.

Drill indicated nickel-copper-palladium mineralization occurs in a gabbro pluton in the south section of the property.

Figure 3. Geology

Notes: **FIELD OF DREAMS
PROPERTY
HOLLOWAY - TANNAHILL TWP.'S**



Upper Blake River Formation
Lower Blake River Formation
Fault

Traverse Locations

0 1 : 40,000 1.35 km
Projection: Web Mercator



History of Exploration

Only a few records of exploration exist for the east section of the property. Most of the work was recorded over the last 45 years. Due to limited outcrop exposure, most of this work consists of airborne and ground geophysical surveys and limited geological mapping.

In 1986, Terraquest Ltd. flew an airborne magnetometer and VLF-EM survey just north of the survey area on behalf of Edda Resources Inc. 32D12SE0015

In 1992, Sudbury Contact Limited prospected and mapped surface features and geology on a small group of claims situated on the Holloway-Marriot township line southeast of the current survey area. 32D12SE2001

In 1997, Queenston Mining Inc. cut a grid consisting of lines spaced 200 metres apart and mapped geology. No outcrop was found in the vicinity to the area covered by this survey. 32D05NE2005

In 1998, Queenston Mining followed up with a regional scale IP survey. Several IP anomalies were detected.

In 2005, Ms. Wendy Weller cut a grid and completed ground magnetometer and VLF surveys on behalf of Tiger Gold Exploration Corporation. 32D05NE2046

In 2007, Ms. Wendy Weller mapped geology on behalf of Tiger Gold Exploration Corporation. Several basalt/andesite outcrops were discovered within the survey area. 20003574

In 2015, Canadian Exploration Services completed a reconnaissance spectrometer survey and a Beepmat survey on behalf of Tiger Gold Exploration Corporation. No anomalies were detected. 20000014588, 20000014608

In 2016, Canadian Exploration Services completed a reconnaissance VLF survey. No anomalies were detected. 20000013864

In 2019, the current property owners completed ground magnetometer and VLF surveys over two areas of the property. Additional magnetometer work was completed in 2021.

Survey Dates and Personnel

Field work for this report was completed in 3 days between October 22, 2021 to October 24, 2021.

The work was performed by property owners: Jim Renaud of London, Ontario and Robert Dillman of Mount Brydges, Ontario.

Survey Logistics

The prospecting traverses were initiated to explore for outcrops and mineralization in the east section of the FOD Property. The traverses and geology are plotted at a scale of 1 : 5,000 on maps appended to this report. Approximately 3 km was traversed on foot.

A compass and a Garmin GPS model GPSMAP 66st were used to navigate. The GPS unit was set to NAD83, Zone 17. Waypoints (WP) for the traverses were periodically recorded and are listed in Table 1. The authors also utilized a CAT S42 smartphone handheld device equipped with the Discovery MapInfo to take field measurements and photos. The CAT data is presented Table 2.

A total of 10 rock samples were collected during the traverses. The rock samples were delivered to AGAT Laboratory for analyses. The lab is in Mississauga, Ontario. All rock samples were Fire Assayed for gold using a 50 gram charge and finished by Inductively Coupled Plasma – Optical Emission Spectroscopy (ICP-OES) to measure the gold concentration. An Assay Certificate from the lab is appended to this report.

Rock sample locations, descriptions and assay results are presented in Table 3 and plotted with assay results on the geology map accompanying this report.

Table 1: GPS Data

GPS Notes	Oct. 22, 2021								
Waypoint	Township	Easting	Northing	Claim & Cell	Notes				
OB	Holloway	600654	5368831	538208, 32D05J178	Overburden, logged, small spruce				
Boulder MV	Holloway	600644	5368851	538208, 32D05J178	Boulder, mafic metavolcanic, logged, small spruce				
Fg MV	Holloway	600673	5368903	538208, 32D05J178	Outcrop, fine-grained mafic metavolcanic				
Var MV	Holloway	600662	5368945	538208, 32D05J178	Outcrop, fine-grained visicular mafic metavolcanic				
Var MV	Holloway	600673	5368940	538208, 32D05J178	Outcrop, fine-grained visicular mafic metavolcanic				
Var to pillow MV	Holloway	600629	5368943	538208, 32D05J178	Outcrop, visicular to pillowed mafic metavolcanic, west face steep hill, FOD21-3				
FOD21-1	Holloway	600664	5368987	538208, 32D05J178	Outcrop, gabbro, coarse to fine grained, FOD21-1 trace pyrite, 1m, best grab				
Fg MV	Holloway	600657	5368989	538208, 32D05J178	Outcrop, fine-grained mafic metavolcanic, base of hill, north side				
Fg MV	Holloway	600643	5368996	538208, 32D05J178	Outcrop, fine-grained mafic metavolcanic				
Fg MV	Holloway	600700	5368602	538208, 32D05J198	Outcrop, fine-grained mafic metavolcanic				
Fg to Cr por MV	Marriott	601188	5368794	538209, 32D05J180	Base of outcrop hill, fine to coarse porphyritic mafic metavolcanic				
Fg MV	Marriott	601199	5368845	538209, 32D05J180	Base of outcrop hill, fine grained mafic metavolcanic				
Crg MV	Marriott	601246	5368875	538209, 32D05J180	Base of outcrop hill, coarse grained mafic metavolcanic				
Fg brec MV	Marriott	601331	5368933	538209, 32D05J180	Base of outcrop hill, fine-grained flow breccia mafic metavolcanic				

GPS Notes	Oct. 23, 2021								
Waypoint	Township	Easting	Northing	Claim & Cell	Notes				
Ves MV	Holloway	600676	5368595	538208, 32D05J198	Outcrop, fine-grained visicular mafic metavolcanic				
Flow brec	Holloway	600651	5368589	538208, 32D05J198	Outcrop, mafic flow breccia				
Flow brec	Holloway	600665	5368568	538208, 32D05J198	Outcrop, mafic flow breccia				
Flow brec	Holloway	600559	5368528	538208, 32D05J198	Outcrop, mafic flow breccia				
Flow brec pillows	Holloway	600543	5368515	538208, 32D05J198	Outcrop, mafic flow breccia and pillowed flows				
Fg MV	Holloway	600530	5368506	538208, 32D05J198	Outcrop, fine-grained mafic metavolcanic				
Flow brec	Holloway	600530	5368513	538208, 32D05J198	Outcrop, mafic flow breccia				
Flow brec	Holloway	600524	5368516	538208, 32D05J198	Outcrop, mafic flow breccia				
OB Bir spr	Holloway	601363	5368345	538209, 32D05J200	Birch, spruce trees				
OB Bir spr	Holloway	601335	5368386	538209, 32D05J200	Birch, spruce trees				
Pop spr	Marriott	601501	5368362	538209, 32D05J200	Poplar, spruce trees				
Fg MV	Marriott	601589	5368348	538209, 32D05J200	Outcrop, fine-grained mafic metavolcanic				
Bir spr	Marriott	601589	5368348	538209, 32D05J200	Unlogged area. Birch and spruce				
Fg MV	Marriott	601590	5368318	538209, 32D05J200	Outcrop, fine-grained mafic metavolcanic				
Cr Ves	Marriott	601582	5368297	538209, 32D05J200	Outcrop, coarse-grained vesicular mafic metavolcanic				
Float MV	Marriott	601599	5368276	538209, 32D05J200	Boulder, mafic metavolcanic				
OC Fg MV	Marriott	601614	5368277	538209, 32D05J200	Outcrop, fine-grained mafic metavolcanic				
Ves MV	Marriott	601610	5368302	538209, 32D05J200	Outcrop, fine-grained vesicular mafic metavolcanic				
FOD21-4	Marriott	601640	5368345	538209, 32D05J200	Fine-grained mafic metavolcanic with wispy qtz breccia stringer striking 285				
OB cut	Holloway	599364	5367607	556449, 32D05J236	Overburden, logged				
Granite float	Holloway	599334	5367664	221813, 32D05J215	Granite boulders				
OB poplar	Holloway	599739	5367752	556447, 32D05J216	Overburden, poplar				

GPS Notes	Oct. 24, 2021								
Waypoint	Township	Easting	Northing	Claim & Cell	Notes				
Fg MV	Tannahill	599690	5366667	288548, 32D05J276	Outcrop, fine-grained mafic metavolcanic				
FOD21-7	Tannahill	599637	5366672	288548, 32D05J276	Pillowed to fine grained mafic metavolcanic with quartz breccia stringer with trace cpy				
MV OC	Tannahill	599637	5366688	288548, 32D05J276	Outcrop, mafic metavolcanic, logged area				
FOD21-12	Tannahill	599620	5366678	288548, 32D05J276	Fe-carbonated and sheared float				
FOD21-11	Tannahill	599618	5366676	288548, 32D05J276	Fe-carbonated quartz float with trace pyrite and hematite				
FOD21 -8 to 10	Tannahill	599620	5366670	288548, 32D05J276	+1m float, Fe-carbonated sheared metavolcanic with traces of pyrite, hematite, fuchsite/ green mica				
OB pop spr	Tannahill	599606	5366669	288548, 32D05J276	Overburden, poplar spruce				
OB pop spr	Tannahill	599485	5367041	175384, 32D05J256	Overburden, poplar spruce				
Granite float	Tannahill	599475	5367062	175384, 32D05J256	Granite boulders				
OB pop spr	Tannahill	599557	5367348	556449, 32D05J236	Overburden, poplar spruce				
OB	Tannahill	599594	5367405	556449, 32D05J236	Overburden, logged				

Table 2: CAT DATA: GEOLOGY OBSERVATIONS

ObservationID	Elevation	GPS_X	GPS_Y	Date	Township	Claim & Cell	ObservationType	Colour	Lithology	LithMod1	LithMod2	Photo1	Comment	UTM_EAST	UTM_NORTH
146	262.3	-79.6386	48.46598	Oct 22 2021	Holloway	538208, 32D05J178	Outcrop	Green	Basalt	fine-grained				600635.656	5368988.808
147	269.5	-79.6386	48.46595	Oct 22 2021	Holloway	538208, 32D05J178	Outcrop	Dark Grey	Basalt	fine-grained		yes	with gabbro dike	600633.867	5368985.769
148	265.9	-79.6383	48.46559	Oct 22 2021	Holloway	538208, 32D05J178	Outcrop	Dark Grey	Basalt	brecciated		yes	flow breccia	600661.936	5368945.687
149	276.8	-79.6382	48.46557	Oct 22 2021	Holloway	538208, 32D05J178	Outcrop		Basalt	fine-grained				600662.859	5368943.477
150	271.1	-79.6387	48.46557	Oct 22 2021	Holloway	538208, 32D05J178	Outcrop		Basalt	vesicular		yes	variolithic pillows	600630.181	5368943.227
151	272.5	-79.6385	48.46473	Oct 22 2021	Holloway	538208, 32D05J178	Float		Basalt	fine-grained			erratic	600643.894	5368849.966
152	269	-79.6378	48.46253	Oct 22 2021	Holloway	538208, 32D05J178			Basalt	fine-grained				600699.619	5368606.686
153	274.2	-79.6293	48.46535	Oct 22 2021	Marriott	538209, 32D05J180	Outcrop	Green	Basalt	fine-grained				601322.131	5368931.68
154	275.4	-79.6293	48.46544	Oct 22 2021	Marriott	538209, 32D05J180	Outcrop		Basalt	vesicular		yes	variolithic	601322.7	5368940.808
155	293.6	-79.6299	48.46504	Oct 22 2021	Marriott	538209, 32D05J180	Outcrop		Basalt	chilled margin			fine grained dike	601280.63	5368895.577
156	264.1	-79.6309	48.46462	Oct 22 2021	Marriott	538209, 32D05J180	Outcrop		Basalt	fine-grained				601204.051	5368848.287
157	276.4	-79.6312	48.46406	Oct 22 2021	Marriott	538209, 32D05J180	Outcrop		Basalt	fine-grained			minor disseminated sulphide	601188.309	5368785.849
158	266	-79.6312	48.46407	Oct 22 2021	Marriott	538209, 32D05J180	Outcrop		Basalt	brecciated		yes	brecciated porphyritic	601182.908	5368785.979
159	262.2	-79.6575	48.45446	Oct 23 2021	Holloway	221813, 32D05J215	Float		Granite					599261.932	5367684.013
160	252.3	-79.6586	48.4544	Oct 23 2021	Holloway	221813, 32D05J215	Float		Basalt	vesicular			variolithic	599180.347	5367676.135
161	280.1	-79.6258	48.45915	Oct 23 2021	Holloway	528309, 32D05J200	Float		Basalt					601596.784	5368246.359
162	281.3	-79.6256	48.45937	Oct 23 2021	Holloway	528309, 32D05J200	Outcrop		Metavolcanics	fine-grained				601611.494	5368271.634
163	278.5	-79.6255	48.45965	Oct 23 2021	Holloway	528309, 32D05J200	Outcrop		Basalt	vesicular				601612.706	5368302.788
164	293.1	-79.6258	48.45995	Oct 23 2021	Holloway	528309, 32D05J200	Outcrop		Basalt	fine-grained	amygdaloidal			601590.377	5368335.521
165	259	-79.6397	48.46185	Oct 23 2021	Holloway	528308, 32D05J198	Outcrop		Basalt	brecciated			flow breccia	600559.696	5368528.592
166	270.7	-79.6401	48.46171	Oct 23 2021	Holloway	528308, 32D05J198	Outcrop		Basalt	autobreccia			pillow and flow breccia	600529.516	5368512.265
167	267.7	-79.6401	48.46159	Oct 23 2021	Holloway	528308, 32D05J198	Outcrop		Basalt	fine-grained				600533.589	5368499.218
168	282.3	-79.6929	48.42182	Oct 23 2021		Off Property	Outcrop		Gabbro					596707.889	5364010.761
169	271.1	-79.6519	48.44525	Oct 24 2021	Tannahill	228548, 32D05J276	Outcrop		Basalt	fine-grained				599689.281	5366666.951
170	266.5	-79.6527	48.44526	Oct 24 2021	Tannahill	228548, 32D05J276	Outcrop		Basalt	pillowed			minor cpy	599635.419	5366667.45
171	264.7	-79.6911	48.4313	Oct 24 2021	Tannahill	228548, 32D05J276	Outcrop		Basalt	fine-grained				596818.597	5365067.006

TABLE 3: ROCK SAMPLES

SampleNo	UTM_X	UTM_Y	Township	Claim & Cell	GPS_X	GPS_Y	Date	SampleType	Colour	Lithology	AlterationType	Photo	Description	Gold ppm
FOD21-1	600666.2	5368986	Holloway	538208, 32D05J178	-79.6382	48.46595	Oct 22 2021	OutcropGrab	Dark Grey	Gabbro			coarse grained gabbro in a finer grained intermediate	0.002
FOD21-2	600678.6	5368966	Holloway	538208, 32D05J178	-79.638	48.46576	Oct 22 2021	FloatGrab	Dark Grey	Gabbro			30x15cm semi angular boulders w disseminated sulphide	0.002
FOD21-3	600626.8	5368943	Holloway	538208, 32D05J178	-79.6387	48.46557	Oct 22 2021	OutcropGrab		Basalt		yes	microbreccia hyaloclastite	0.001
FOD21-4	601637.1	5368345	Marriott	538200, 32D05J200	-79.6252	48.46003	Oct 23 2021	OutcropGrab		Basalt	Silicification	yes	basalt microbreccia w qtz vein cutting.. disseminated sulphide in breccia groundmass. vein trending 285	0.005
FOD21-5				Off Property			Oct 23 2021	FloatGrab		Basalt	Carbonate	yes	50x40cm fuchsite with qtz veins	0.002
FOD21-6				Off Property			Oct 23 2021	FloatGrab		Metavolcanics	Carbonate		carbonated and fuchsite	0.004
FOD21-7	599634.4	5366672	Tannahill	228548, 32D05J276	-79.6527	48.4453	Oct 24 2021			Basalt	Silicification		sulphides in shear cutting pillows	0.003
FOD21-8	599618.4	5366671	Tannahill	228548, 32D05J276	-79.6529	48.44529	Oct 24 2021	FloatGrab	RustyOrange	Basalt	Carbonate	yes	silicified and carbonate altered basalt microbreccia	0.004
FOD21-9	599620.1	5366665	Tannahill	228548, 32D05J276	-79.6529	48.44524	Oct 24 2021			Basalt	Carbonate		and sugary qtz	0.009
FOD21-10	599617.5	5366668	Tannahill	228548, 32D05J276	-79.6529	48.44527	Oct 24 2021	FloatGrab		Basalt	Carbonate		and silicification	0.003
FOD21-11	599617.9	5366675	Tannahill	228548, 32D05J276	-79.6529	48.44533	Oct 24 2021	FloatGrab	RustyRed	Metavolcanics	Carbonate	yes	hematite alteration cut by late qtz vein	0.003
FOD21-12	599617.3	5366676	Tannahill	228548, 32D05J276	-79.6529	48.44534	Oct 24 2021	FloatGrab		Basalt	Carbonate		microbreccia w disseminated sulphide	0.016
FOD21-13				Off Property				FloatGrab			Carbonate		carbonated and fuchsite	0.002
FOD21-14				Off Property				FloatGrab			Carbonate		carbonated and fuchsite	0.002



Geology Observation 147
Fine-grained basalt



Geology Observation 148
Flow breccia



Geology Observation 150
Vesicular basalt



Geology Observation 154
Vesicular basalt



Geology Observation 158
Flow breccia



Rock Sample: FOD21-3
Micro-breccia hyaloclastite



Rock Sample: FOD21-4
Quartz vein



Rock Sample: FOD21-8
Sheared and carbonated boulders



Rock Sample: FOD21-11
Carbonated mafic metavolcanic with quartz-Stringers and hematite



Rock Sample: FOD21-1 **0.002 ppm Au**



Rock Sample: FOD21-2 **0.002 ppm Au**



Rock Sample: FOD21-3 **0.001 ppm Au**



Rock Sample: FOD21-4 0.005 ppm Au



Rock Sample: FOD21-7 0.003 ppm Au



Rock Sample: FOD21-8 0.004 ppm Au



Rock Sample: FOD21-9 0.009 ppm Au



Rock Sample: FOD21-10 0.003 ppm Au



Rock Sample: FOD21-11 0.003 ppm Au



Rock Sample: FOD21-12

0.016 ppm Au

Survey Results

Clay overburden covers most of the areas traversed. Outcrops were found in some of the higher elevations. Some of these areas have good outcrop exposure. All outcrops were basaltic and consisted of either fine to coarse grained flows, vesicular, pillowed, or flow-top breccia. No zones of faulting, shearing, alteration, significant veining or sulphide mineralization were observed.

In the southeast corner of the property, a small quartz stringer with traces of pyrite and chalcopyrite were found in a basalt outcrop in claim 288548, cell 32D05J276. On the northwest face of the outcrop, several sheared boulders of mafic rock were found in till. The boulders are well carbonated and mineralized with hematite, traces green mica/ fuchsite and disseminated pyrite. The carbonated boulders do not appear to be related the small quartz stringer in the adjacent outcrop.

Assays on the 10 rock samples collected from the property did not return any significant values. Nine of the rock samples showed gold values ranging 0.001 ppm to 0.009 ppm Au. Sample FOD21-12, one of 5 samples collected from the carbonated boulders found in claim 288548, cell 32D05J276 assayed 0.016 ppm Au.

Discussion of Results

Overburden is a challenge to exploration on the FOD Property. Although some areas of outcrop occur on the property, at present, no areas of faulting, shearing, alteration or sulphide mineralization have been identified. However, the discovery of till containing carbonated and sheared boulders in the southeast section of the property is encouraging. Boulders of this type are fragile, easily weathered and typically do not transport considerable distances during glaciation. There is good probability the carbonated boulders are from a shear zone on the property situated a short distance to the northwest from the discovery site.

Conclusions and Recommendations

The survey has identified carbonated boulders from a shear zone potentially situated on the FOD Property. Further exploration is warranted to locate the shear zone as it may have the potential to host gold mineralization. Additional prospecting with ground magnetometer and VLF-EM surveys are recommended.

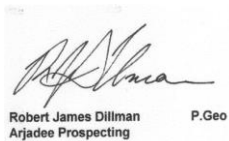
An estimated budget for the proposed work is \$35,000 and includes:

VLF Survey	\$10,000
Magnetometer Survey	10,000
Prospecting/ Geological Mapping	<u>15,000</u>
	\$35,000

Respectfully Submitted,



Dr. Jim Renard P.Ge.,
and,



Robert Dillman P.Ge., B.Sc.

April 2, 2022

References

- Berger, B.R., Luinstra, B. and Ropcan, J.C. 2002.** Precambrian geology of the highway 101 area, east of Matheson, Ontario; Ontario Geological Survey, Map 2676, scale 1: 50,000.
- Carmichael, S. J., 1997.** Report on Prospecting on the Holloway Township Project, Larder Lake Mining Division, District of Cochrane, Ont. For Queenston Mining Inc. 32D05NE2005
- Dillman, R. J., 2021.** Report on Magnetometer and Gradiometer Survey on the “C” Target, Field of Dreams Property, Holloway and Tannahill Townships, Ontario.
- JVX Limited, 1992.** A Logistical and Interpretive Report on VLF-EM, Magnetic and Gravity Surveys on the Diamond Lake Properties, Larder Lake Area, Northeastern Ontario. For Sudbury Contact Mines Ltd. 32D12SE2001
- JVX Limited, 1998.** A Logistical and Interpretive Report on Spectral IP / Resistivity Survey, Holloway – Marriott Township Area, Northeastern Ontario. For: Queenston Mining Inc. 32D05NE2003
- Ploeger, C. J., 2015.** Beepmat Survey Over the Harker Heritage Property, Area 11, Clifford, Elliot, Harker, Holloway, Tannahill and Marriott Townships, Ontario. For: Tiger Exploration Corporation. 2000014588
- Ploeger, C. J., 2015.** Spectrometer Survey Over the Harker Heritage Property, Area 11, Clifford, Elliot, Harker, Holloway, Tannahill and Marriott Townships, Ontario. For: Tiger Exploration Corporation. 2000014608
- Ploeger, C. J., 2016.** VLF Survey Over the Harker Heritage Property, Area 11, Clifford, Elliot, Harker, Holloway, Tannahill and Marriott Townships, Ontario. For: Tiger Exploration Corporation. 2000013864
- Terraquest Ltd. 1986.** Report on an Airborne Magnetic and VLF-EM Survey, Holloway and Marriott Township, Larder Lake Mining Division, Ontario. For: Edda Resources Inc. 32D12SE0015
- Weller, W. K., 2005.** Geophysical Survey Report on the Holloway—37, Holloway Township, Larder Lake Mining Division, District of Cochrane, Ontario. For Tiger Exploration Corporation. 32D05NE2046
- Weller, W. K., 2007.** Geology Report on the Holloway—9, Holloway Township, Larder Lake Mining Division, District of Cochrane, Ontario. For Tiger Exploration Corporation. 20003574

Dr. Jim Renaud P.Geo, PhD.
Renaud Geological Consulting Ltd.
21272 Denfield Rd, London, Ontario, N6H-5L2
519-473-3766
rgcltd@execulink.com

CERIFICATE of AUTHOR

I, Jim Renaud, **Professional Geologist**, do certify that:

1. I am the **President** and the holder of a **Certificate of Authorization** for:

Renaud Geological Consulting Ltd.,
21272 Denfield Rd
London, Ontario, Canada
N6H-5L2

2. That I have the degree of Bachelor of Science (Chemistry and Geology), 1999, from Western University; the degree of Honors Standing in Geology, 2000, from Western University; Masters of Science (Economic Geology), 2003, from Western University; and Doctor of Philosophy in Geology, 2014, from Western University;

3. I am an active member of:

Association of Professional Geoscientists of Ontario, APGO
Prospectors and Developers Association of Canada, PDAC

4. I have been a **licensed Prospector in Ontario** since 2000.

5. I have worked continuously as a Geologist for 18 years.

6. Unless stated otherwise, **I am responsible** for the preparation of all sections of the Assessment Report titled:

GRASS ROOTS PROSPECTING REPORT
FIELD OF DREAMS PROPERTY
LARDER LAKE MINING DIVISION
HOLLOWAY-TANNAHILL TOWNSHIPS, ONTARIO

7. I am not aware of any material fact or material change with respect to the subject matter of the Assessment Report that is not contained in the Assessment Report and its omission to disclose makes the Assessment Report misleading.

Dated this 2nd day of April 2022



Robert J. Dillman P.Geo, B.Sc.
ARJADEE PROSPECTING
8901 Reily Drive, Mount Brydges, Ontario, Canada, N0L1W0
Phone/ fax (519) 264-9278

CERIFICATE of AUTHOR

I, Robert J. Dillman, Professional Geologist, do certify that:

1. I am the President and the holder of a Certificate of Authorization for:

ARJADEE PROSPECTING
8901 Reily Drive, Mount Brydges, Ontario, Canada N0L1W0
2. I graduated in 1991 with a Bachelor of Science Degree in Geology from the University of Western Ontario.
3. I am an active member of:

Professional Geoscientists of Ontario, PGO
Prospectors and Developers Association of Canada, PDAC
4. I have been a licensed Prospector in Ontario since 1984.
5. I have worked continuously as a Professional Geologist for 31 years.
6. Unless stated otherwise, I am responsible for the preparation of all sections of the Assessment Report titled:

GRASS ROOTS PROSPECTING REPORT
FIELD OF DREAMS PROPERTY
LARDER LAKE MINING DIVISION,
HOLLOWAY-TANNAHILL TOWNSHIPS, ONTARIO
dated, April 2, 2022
7. I am not aware of any material fact or material change with respect to the subject matter of the Assessment Report that is not contained in the Assessment Report and its omission to disclose makes the Assessment Report misleading.

Dated this 2nd day of April 2022



Robert James Dillman
Arjadee Prospecting

P.Geo





CLIENT NAME: ROBERT DILLMAN
8901 REILY DRIVE
MOUNT BRYDGES, ON N0L 1W0
519-264-9278

ATTENTION TO: ROBERT DILLMAN, JIM RENAUD
PROJECT:

AGAT WORK ORDER: 21T837066

SOLID ANALYSIS REVIEWED BY: Meredith White, Senior Technician

DATE REPORTED: Jan 19, 2022

PAGES (INCLUDING COVER): 8

Should you require any information regarding this analysis please contact your client services representative at (905) 501-9998

Notes

Disclaimer

- All work conducted herein has been done using accepted standard protocols and generally accepted practices and methods. AGAT test methods may incorporate modifications from the specified reference methods to improve performance.
- All samples will be processed or within 90 days following analysis, unless expressly agreed otherwise in writing. Please contact your Client Project Manager if you require additional sample storage time.
- AGAT'S LIABILITY in connection with any delay, performance or non performance of these services is only to the Client and does not extend to any other third party. Unless expressly agreed otherwise in writing, AGAT'S LIABILITY is limited to the actual cost of the specific analysis or analyses included in the quotation.
- Our Certificate shall not be reproduced except in full, without the written approval of the laboratory.
- The test results remain the property of the client, only to the extent as provided by the laboratory.
- Measurement Uncertainty is not taken into consideration when stating conformity with a specified requirement.
- Application of guidelines is provided "as is" without warranty of any kind, either expressed or implied, including, but not limited to, warranties of merchantability, fitness for a particular purpose, or non-infringement. AGAT assumes no responsibility for any errors or omissions in the guidelines contained in this document.
- All reportable information, as specified by ISO/IEC 17025:2017 is available from AGAT Laboratories upon request.

AGAT Laboratories (VT)

Member of Association of Professional Engineers and Geoscientists of Alberta (APEGA)
Member of the Environmental Laboratory Association (NELA)
Environmental Services Association of Ontario (ESAA)

Page 4 of 8

AGAT Laboratories is accredited to ISO/IEC 17025 by the Canadian Association for Laboratory Accreditation Inc. (CALA) and the Standards Council of Canada (SCC) for specific tests listed on the scope of accreditation. AGAT Laboratories (Mississauga) is also accredited by the Canadian Association for Laboratory Accreditation Inc. (CALA) for specific drinking water tests. Accredited tests are location and parameter specific. A complete listing of parameters for each location is available from www.agat-labs.com or for www.scc.ca. The tests in this report may not necessarily be included in the scope of accreditation.



AGAT Laboratories

Certificate of Analysis

AGAT WORK ORDER: 21T837066

PROJECT:

5623 McADAM ROAD
MISSISSAUGA, ONTARIO
CANADA L4Z 1N9
TEL: (905) 501-9888
FAX: (905) 501-0088
http://www.agatlabs.com

CLIENT NAME: ROBERT DILLMAN

ATTENTION TO: ROBERT DILLMAN, JIM RENAUD

(200-) Sample Login Weight

DATE SAMPLED: Nov 29, 2021 DATE RECEIVED: Nov 15, 2021 DATE REPORTED: Jan 19, 2022 SAMPLE TYPE: Rock

Analyte:	Sample Login Weight
Unit:	kg
RDL:	0.01
FO021-1 (3269604)	1.75
FO021-2 (3269605)	1.39
FO021-3 (3269606)	0.99
FO021-4 (3269607)	0.75
FO021-5 (3269608)	1.05
FO021-6 (3269609)	2.05
FO021-7 (3269610)	1.75
FO021-8 (3269611)	1.70
FO021-9 (3269612)	1.03
FO021-10 (3269613)	2.63
FO021-11 (3269614)	3.90
FO021-12 (3269615)	3.73
FO021-13 (3269616)	0.93
FO021-14 (3269617)	1.31

Comments: RDL - Reported Detection Limit
Analysis performed at AGAT 5023 McAdam Rd. Mississauga (ON unless marked by *)
Insufficient Sample : IS
Sample Not Received : SNR

Certified By:



AGAT Laboratories

Certificate of Analysis

AGAT WORK ORDER: 21T837066
PROJECT:

5025 McADAM ROAD
MISSEGAUGA, ONTARIO
CANADA L4Z 1N9
TEL: (905) 601-0908
FAX: (905) 601-0568
http://www.agatlab.com

CLIENT NAME: ROBERT DILLMAN

ATTENTION TO: ROBERT DILLMAN, JIM RENAUD

(202.552) Fire Assay - Trace Au, ICP-OES finish (50g charge) (ppm)

DATE SAMPLED: Nov 29, 2021	DATE RECEIVED: Nov 15, 2021	DATE REPORTED: Jan 19, 2022	SAMPLE TYPE: Rock
	Analyte:	Au	
	Unit:	ppm	
	RDL:	0.001	
Sample ID (AGAT ID)			
F0D21-1 (3269604)		0.002	
F0D21-2 (3269605)		0.002	
F0D21-3 (3269606)		0.001	
F0D21-4 (3269607)		0.005	
F0D21-5 (3269608)		0.002	
F0D21-6 (3269609)		0.004	
F0D21-7 (3269610)		0.003	
F0D21-8 (3269611)		0.004	
F0D21-9 (3269612)		0.009	
F0D21-10 (3269613)		0.005	
F0D21-11 (3269614)		0.003	
F0D21-12 (3269615)		0.016	
F0D21-13 (3269616)		0.002	
F0D21-14 (3269617)		0.002	

Comments: RDL - Reported Detection Limit
Analysis performed at AGAT 5025 McAdam Rd., Mississauga, ON (unless marked by *)
Insufficient Sample - IS
Sample Not Received - SNR

Certified By:



Certificate of Analysis

AGAT WORK ORDER: 21T837066

PROJECT:

5723 McADAM ROAD
MISSISSAUGA, ONTARIO
CANADA L4Z 1N9
TEL (905)601-5339
FAX (905)601-0389
http://www.agatlab.com

CLIENT NAME: ROBERT HILLMAN

ATTENTION TO: ROBERT HILLMAN, JIM RENAUD

Sieving - % Passing (Crushing)

DATE SAMPLED: Nov 29, 2021	DATE RECEIVED: Nov 15, 2021	DATE REPORTED: Jan 19, 2022	SAMPLE TYPE: Rock
Analyte: Crush-Pass			
Unit: %			
Sample ID (AGAT ID)	RCL:		
F0021-1 (3263004)		0.01	75.87

Comments: RDL - Reported Detection Limit
Analysis Performed at AEA 1523 McAdam Rd., Mississauga, ON (unless marked by *)
Insufficient Sample: IS
Sample Not Received: SNR

Certified By:



Certificate of Analysis

AGAT WORK ORDER: 21T837066

PROJECT:

5623 MCADAM ROAD
MISSISSAUGA, ONTARIO
CANADA L4Z 1N9
TEL: (905) 601-8998
FAX: (905) 601-0508
<http://www.agatlabs.com>

CLIENT NAME: ROBERT DILLMAN

ATTENTION TO: ROBERT DILLMAN, JIM RENAUD

Sieving - % Passing (Pulverizing)

DATE SAMPLED: Nov 28, 2021 DATE RECEIVED: Nov 15, 2021 DATE REPORTED: Jan 19, 2022 SAMPLE TYPE: Rock

Sample ID (AGAT ID)	Analyte: Pul-Pass %	
	Unit:	%
H0021 1132606041	RCL:	0.01
		95.51

Comments: RLL - Reported Detection Limit
Analysis performed at AGAT 5623 McAdam Rd., Mississauga, ON (unless marked by *)
Insufficient Sample - IS
Sample Not Received - SNR

Certified By:



CLIENT NAME: ROBERT DILLMAN

ATTENTION TO: ROBERT DILLMAN, JIM RENAUD

(202-552) Fire Assay - Trace Au, ICP-OES finish (50g charge) (ppm)

Parameter	Sample ID	REPLICATE #1			RPD							
		Original	Replicate	RPD								
Au	3269E01	0.02	0.02	0.0%								



CLIENT NAME: ROBERT DILLMAN

ATTENTION TO: ROBERT DILLMAN, JIM RENAUD

(202-552) Fire Assay - Trace Au. ICP-OES finish (50g charge) (ppm)

Parameter	Expect.	CRM #1 (ref. 355A)		Limits				
		Actual	Recovery					
Au	5.04	4.94	98%	90% - 110%				



5523 MIDWAY ROAD
 MISSISSAUGA, ONTARIO
 CANADA L4E 1N9
 TEL: (905) 501-8988
 FAX: (905) 501-8589
 HTTP://WWW.AGAT.LAB.CA

Method Summary

CLIENT NAME: ROBERT DILLMAN

AGAT WORK ORDER: 21T827666

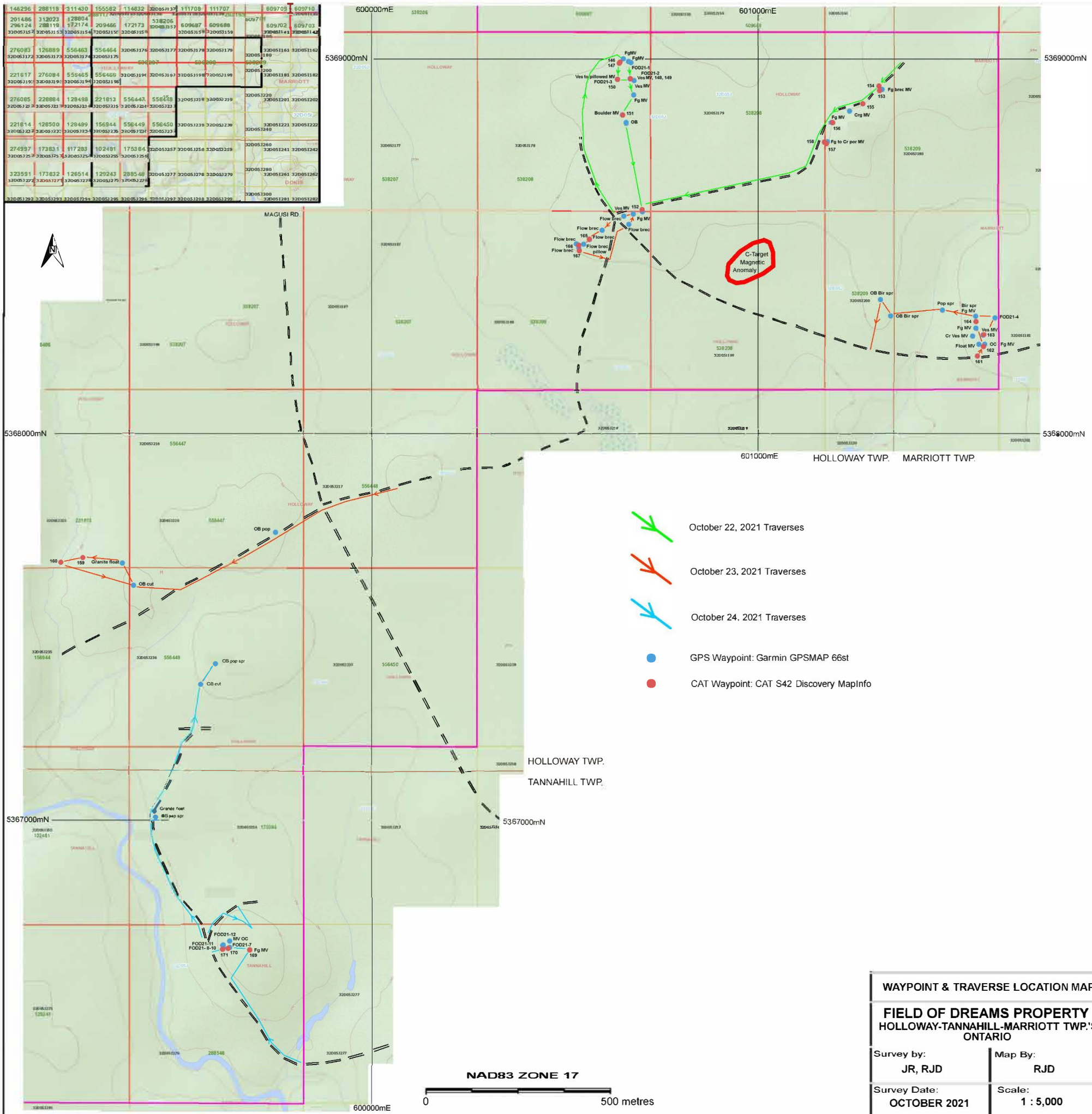
PROJECT:

ATTENTION TO: ROBERT DILLMAN, JIM REAUD

SAMPLING SITE:

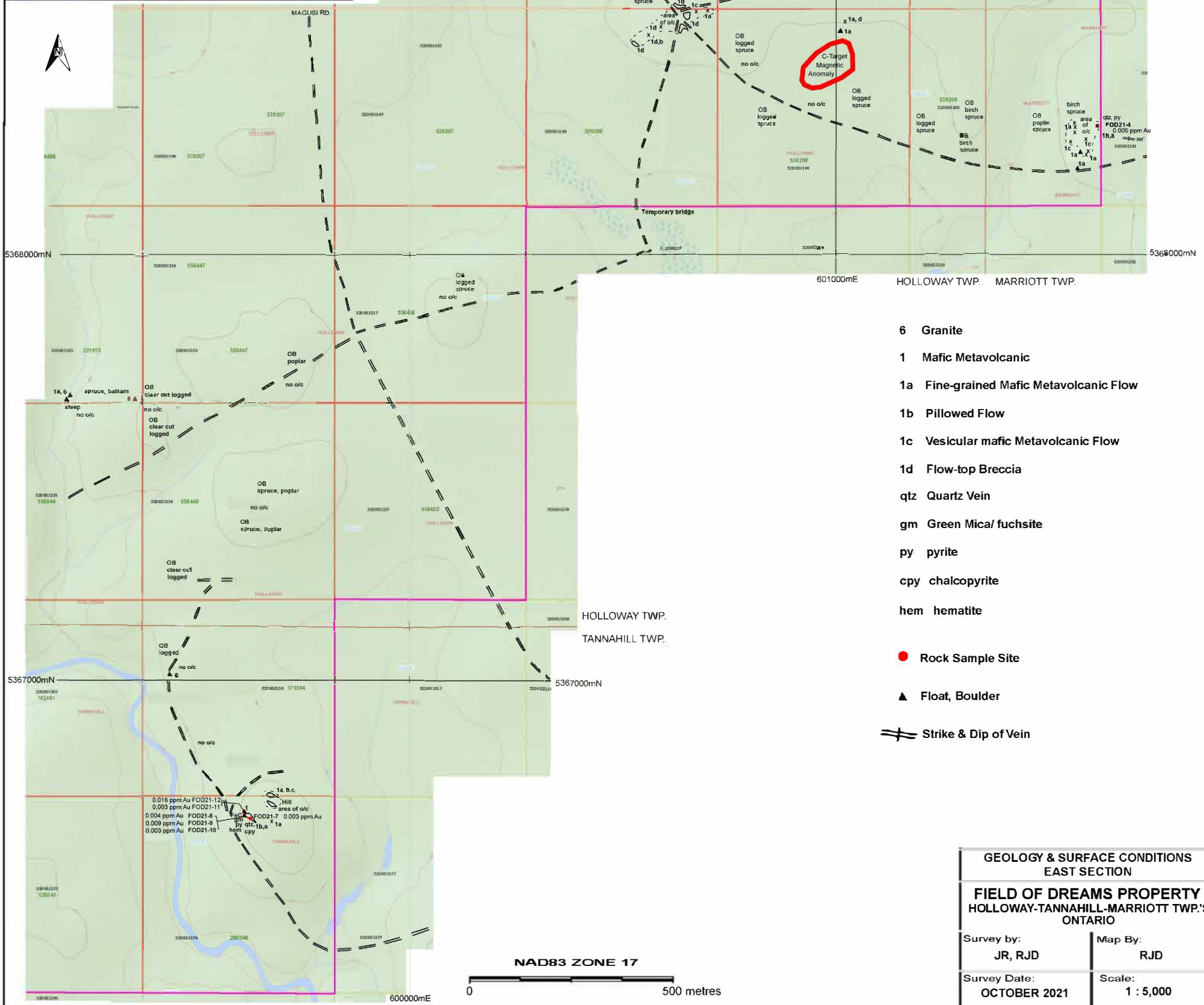
SAMPLED BY:

PARAMETER	AGAT S.O.P	LITERATURE REFERENCE	ANALYTICAL TECHNIQUE
Solid Analysis			
Sample Login Weight	MIN-12009		BALANCE
Au	MIN-12006, MIN-12004		ICP/OES
Crush-Pass %			BALANCE
Pul-Pass %			BALANCE



WAYPOINT & TRAVERSE LOCATION MAP	
FIELD OF DREAMS PROPERTY HOLLOWAY-TANNAHILL-MARRIOTT TWP.'S ONTARIO	
Survey by: JR, RJD	Map By: RJD
Survey Date: OCTOBER 2021	Scale: 1 : 5,000

146296	288118	311430	55582	114832	32005132	111708	111707	609709	609710
201486	312023	328804	209466	172174	32005137	609687	609688	609702	609703
296124	288119	172174	209466	172174	32005137	609687	609688	609702	609703
32005157	32005153	32005154	32005156	32005158	32005159	32005161	32005162	32005163	32005164
276083	126889	556463	556464	32005176	32005177	32005178	32005179	32005180	32005181
32005172	32005175	32005176	32005177	32005178	32005179	32005180	32005181	32005182	32005183
221817	276084	556465	556466	32005194	32005195	32005196	32005197	32005198	32005199
32005192	32005193	32005194	32005195	32005196	32005197	32005198	32005199	32005200	32005201
276085	228884	126498	221813	556447	556448	32005218	32005219	32005220	32005221
32005212	32005213	32005214	32005215	32005216	32005217	32005218	32005219	32005220	32005221
221814	126500	126499	156944	556449	556450	32005228	32005229	32005230	32005231
32005222	32005223	32005224	32005225	32005226	32005227	32005228	32005229	32005230	32005231
274997	173831	117283	102481	175384	32005257	32005258	32005259	32005260	32005261
32005252	32005253	32005254	32005255	32005256	32005257	32005258	32005259	32005260	32005261
323591	173832	126514	129243	288548	32005277	32005278	32005279	32005280	32005281
32005272	32005273	32005274	32005275	32005276	32005277	32005278	32005279	32005280	32005281
32005282	32005283	32005284	32005285	32005286	32005287	32005288	32005289	32005290	32005291



- 6 Granite
- 1 Mafic Metavolcanic
- 1a Fine-grained Mafic Metavolcanic Flow
- 1b Pillowed Flow
- 1c Vesicular mafic Metavolcanic Flow
- 1d Flow-top Breccia
- qtz Quartz Vein
- gm Green Mica/ fuchsite
- py pyrite
- cpy chalcopyrite
- hem hematite
- Rock Sample Site
- ▲ Float, Boulder
- ≡ Strike & Dip of Vein

GEOLOGY & SURFACE CONDITIONS EAST SECTION	
FIELD OF DREAMS PROPERTY HOLLOWAY-TANNAHILL-MARRIOTT TWP.'S ONTARIO	
Survey by: JR, RJD	Map By: RJD
Survey Date: OCTOBER 2021	Scale: 1 : 5,000