

We are committed to providing [accessible customer service](#).

If you need accessible formats or communications supports, please [contact us](#).

Nous tenons à améliorer [l'accessibilité des services à la clientèle](#).

Si vous avez besoin de formats accessibles ou d'aide à la communication, veuillez [nous contacter](#).



# **Gem Property Assessment Report**

Weaver Lake Area Township  
Ontario, Canada

NTS Map Sheet 052G09A

Latitude: 90.53774 W

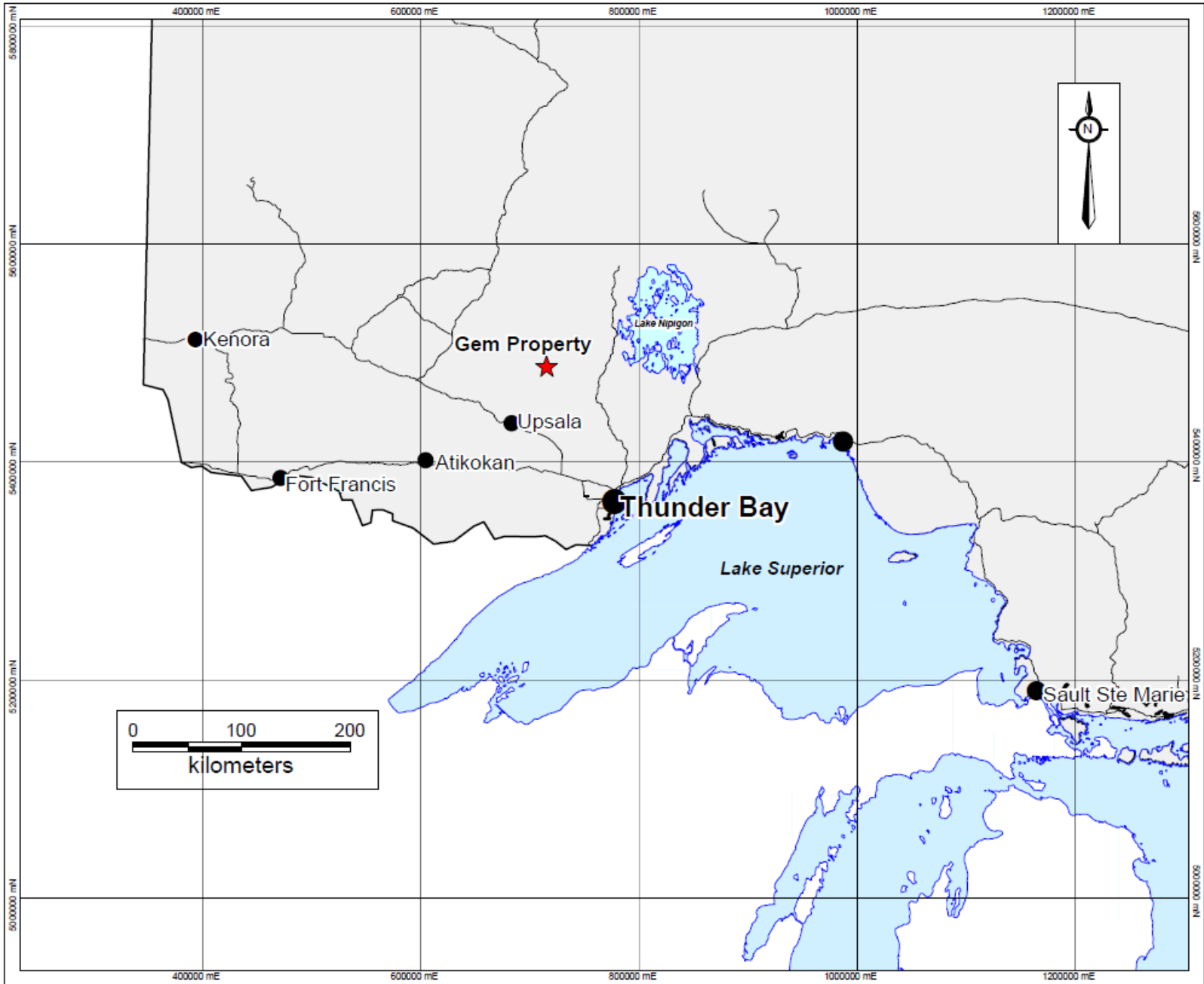
Longitude: 49.53774 N

UTM Datum: NAD 83, Zone 15u

Doug Kakeeway  
4-13-2022

## Table of Contents

Table of Contents	Page 1
Key Location Map	Page 2
Summary	Page 3
Introduction	Page 3
Regional Geology and Property Geology	Page 3
Location and Access	Page 3
Conclusion	Page 3
Recommendation	Page 3
Regional Geology Map	Page 4
GPS prospecting tracks	Page 4
Property Geology Map	Page 5
Claim Map	Page 6
GPS track May 13,2020	Page 7
GPS track May 19,2020	Page 8
GPS tracks May 28,2020 (1of2)	Page 9
GPS track May 28,2020 (2of2)	Page 10
Sample Location/Description Table	Page 11
Outcrop Picture GPS locations	Page 12 and 13
Invoice and Receipt	Page 14



**Summary**

The Gem property was acquired based on a historical exploration program that had a assay up to 13% zinc and 1.5 gr/t gold.

**Introduction**

In 2020 Doug and his assistant make three separate prospecting day trips into the Gem property. The first trip into the Gem property which was not yet claimed in May 13/2020 was to verify the several Gossans seen from the Mlas Google earth MNDM internet site. The second and third prospecting trips in May 19,2020 and May 28,2020 were to further prospect the former Benton Resources trenches etc. which assayed 1.5 gr/t gold. Twenty nine grab samples were picked up and the locations were recorded with the GPS and not analyzed in the Lab.

**Location and Access**

The Gem property is located in the Kearns Lake area, 200 kms from Thunder Bay, Ontario. The property is located on NTS sheet 52G09. Access to the property is traveling north on a paved highway 527, then down secondary logging road Highway 811 up to (Garden Lake Road) to km 30. At approximately km 22, the logging road crosses the south portion of the property.

**Property Geology**

Geological mapping in the Gem property was difficult due to thick overburden and very little exposed outcrop. The majority of the Gem property is comprised of mafic to intermediate metavolcanic rocks predominantly basaltic and andesitic flows, tuffs and breccias. The west end of the property has been previously mapped as a moderately foliated to- massive tonalite to grana-diorite suite. The same rock type has also been mapped in small section on the northern tip of the property. Mapping has also previously identified areas of metasedimentary rocks including conglomerate chert, greywacke and iron formation have also been noted on the property ( Kara Barnes 2008)

**Regional Geology**

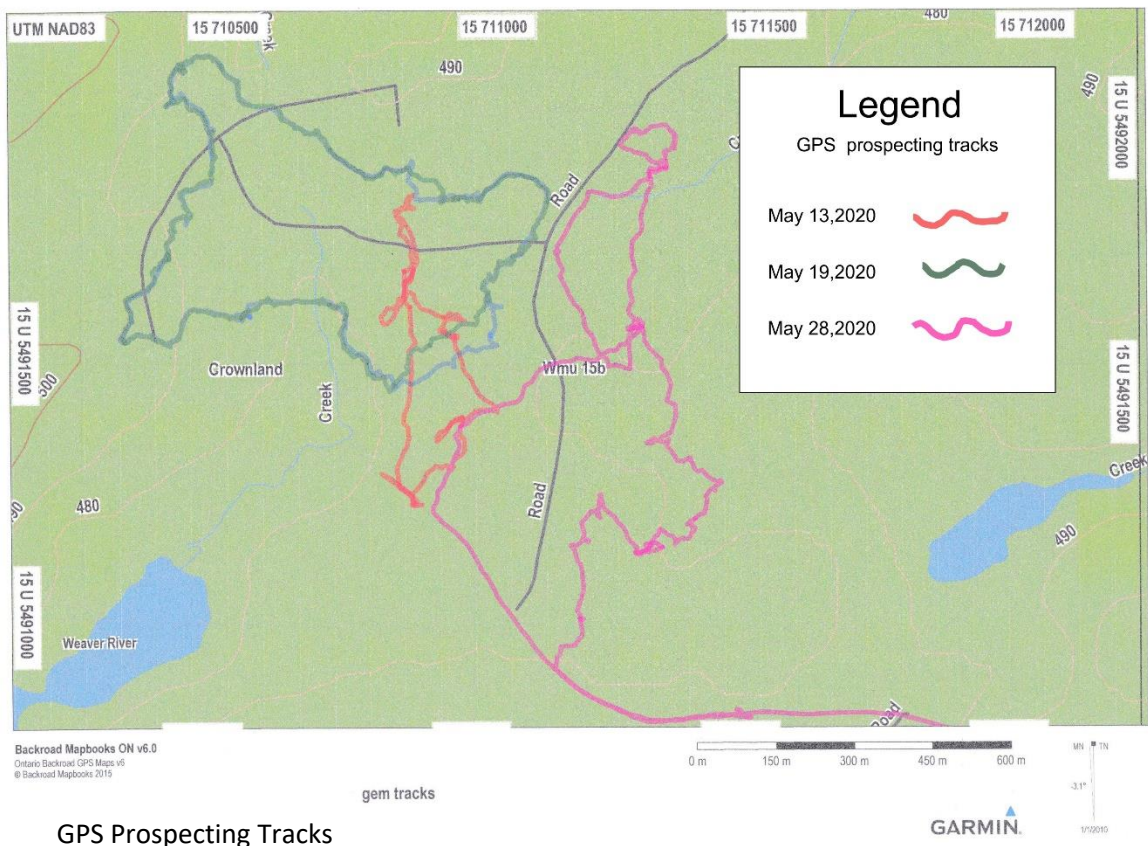
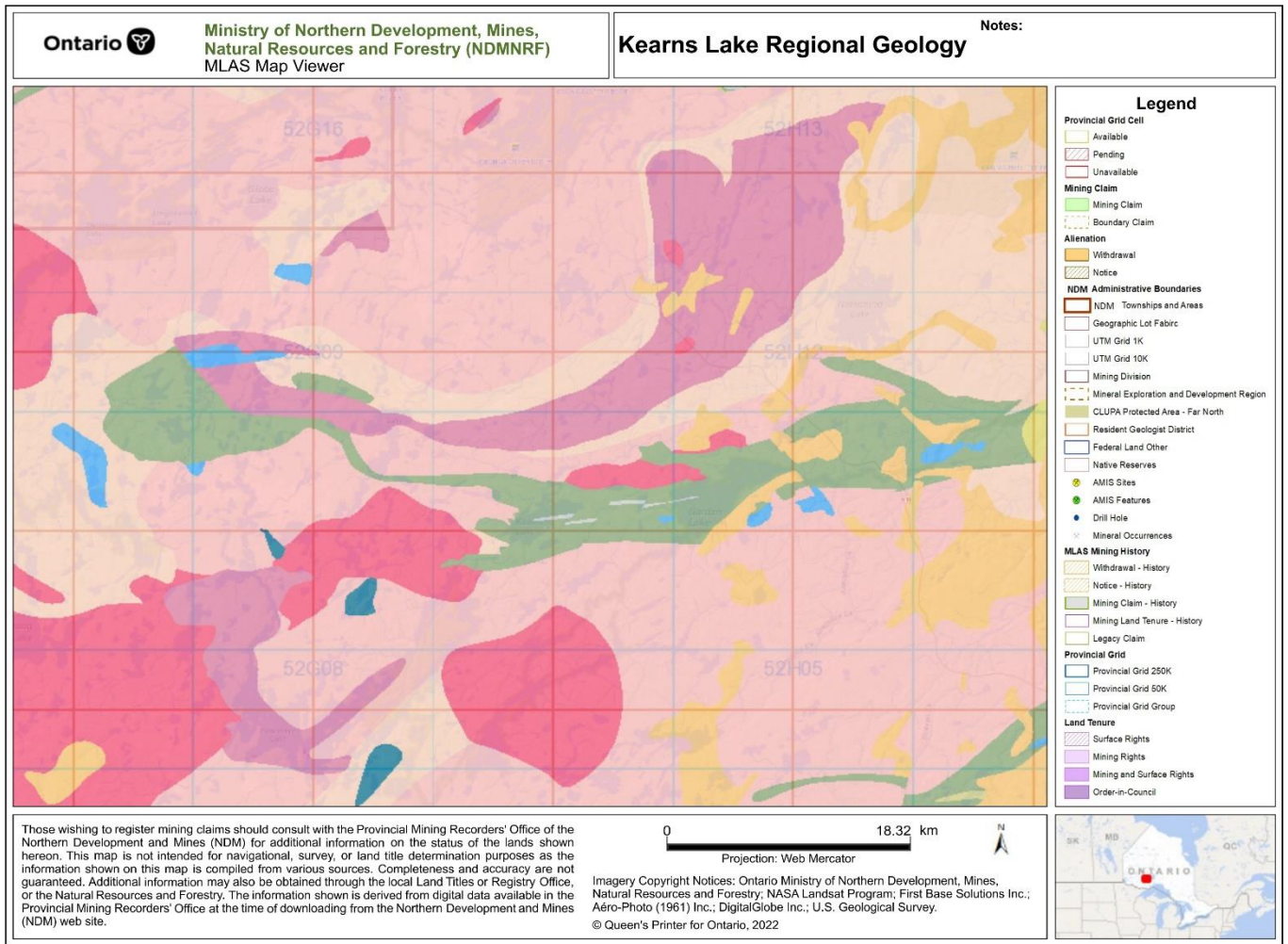
The Gem Property is located in the east west trending Wabigoon Subprovince, bounded to the north by the English River and Winnipeg River Subprovinces and to the south by the Quetico Subprovince. (Kara Barnes 2008)

**Conclusion**

The three prospecting trips into the Gem property has given me confidence of finding in the future good grades in base metal and precious metals on the property. On the 50% of the ground that was prospected on the Gem it was successful in finding elevated shearing, folding, silica, sericite, garnets and several meter wide gossans. Ground geophysical or diamond drilling program has not yet been implemented on the Gem Property.

**Recommendation**

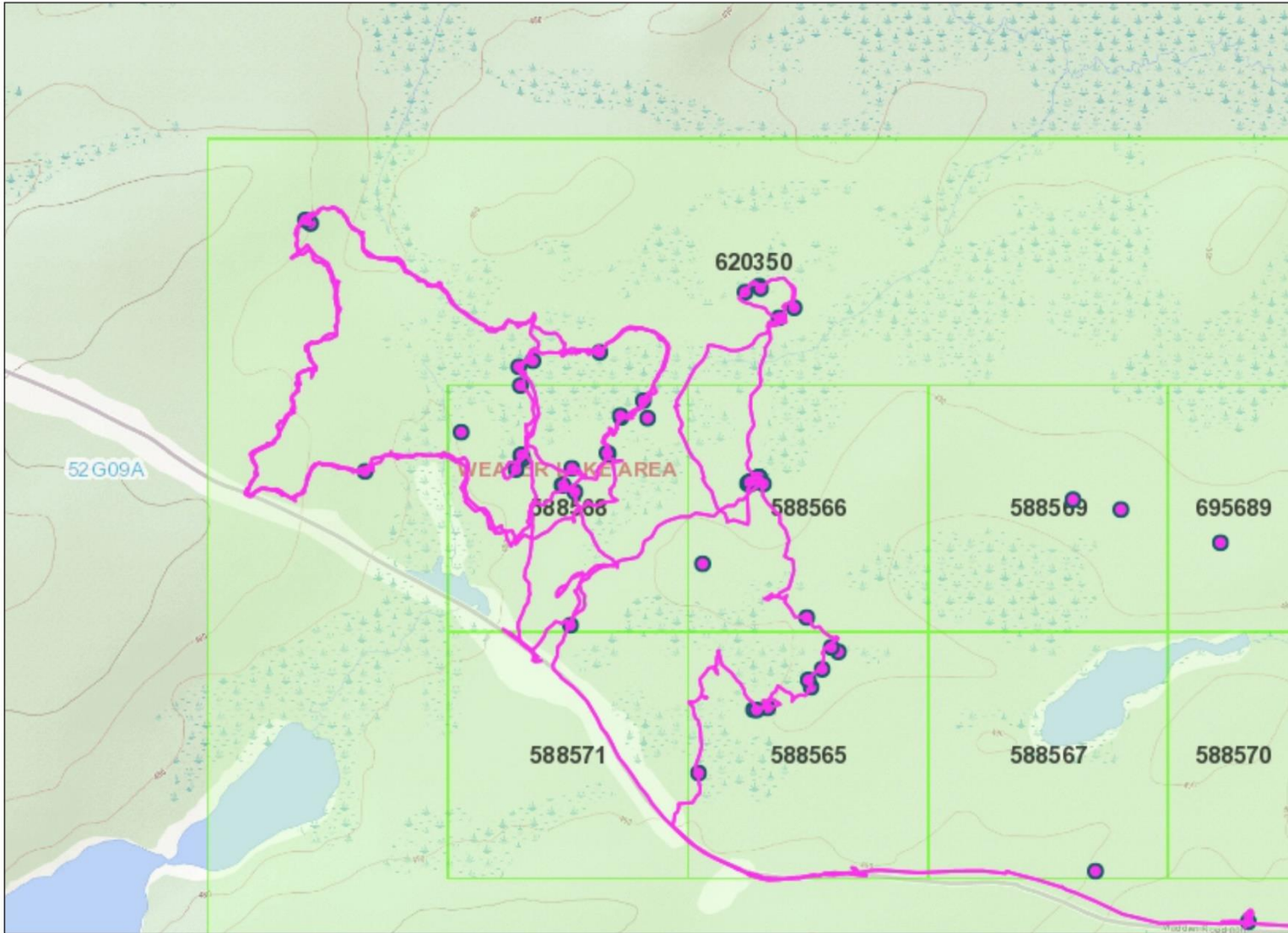
Ground geophysics followed by Diamond Drilling.



GPS Prospecting Tracks







### Legend

- Provincial Grid Cell**
  - Available
  - Pending
  - Unavailable
- Mining Claim**
  - Mining Claim
  - Boundary Claim
- Alienation**
  - Withdrawal
  - Notice
- NDM Administrative Boundaries**
  - NDM Townships and Areas
  - Geographic Lot Fabric
  - UTM Grid 1K
  - UTM Grid 10K
  - Mining Division
  - Mineral Exploration and Development Region
  - CLUPA Protected Area - Far North
  - Resident Geologist District
  - Federal Land Other
  - Native Reserves
- AMIS Sites**
  - AMIS Sites
  - AMIS Features
  - Drill Hole
  - Mineral Occurrences
- MLAS Mining History**
  - Withdrawal - History
  - Notice - History
  - Mining Claim - History
  - Mining Land Tenure - History
  - Legacy Claim
- Provincial Grid**
  - Provincial Grid 250K
  - Provincial Grid 50K
  - Provincial Grid Group
- Land Tenure**
  - Surface Rights
  - Mining Rights
  - Mining and Surface Rights
  - Order-in-Council

Those wishing to register mining claims should consult with the Provincial Mining Recorders' Office of the Northern Development and Mines (NDM) for additional information on the status of the lands shown hereon. This map is not intended for navigational, survey, or land title determination purposes as the information shown on this map is compiled from various sources. Completeness and accuracy are not guaranteed. Additional information may also be obtained through the local Land Titles or Registry Office, or the Natural Resources and Forestry. The information shown is derived from digital data available in the Provincial Mining Recorders' Office at the time of downloading from the Northern Development and Mines (NDM) web site.



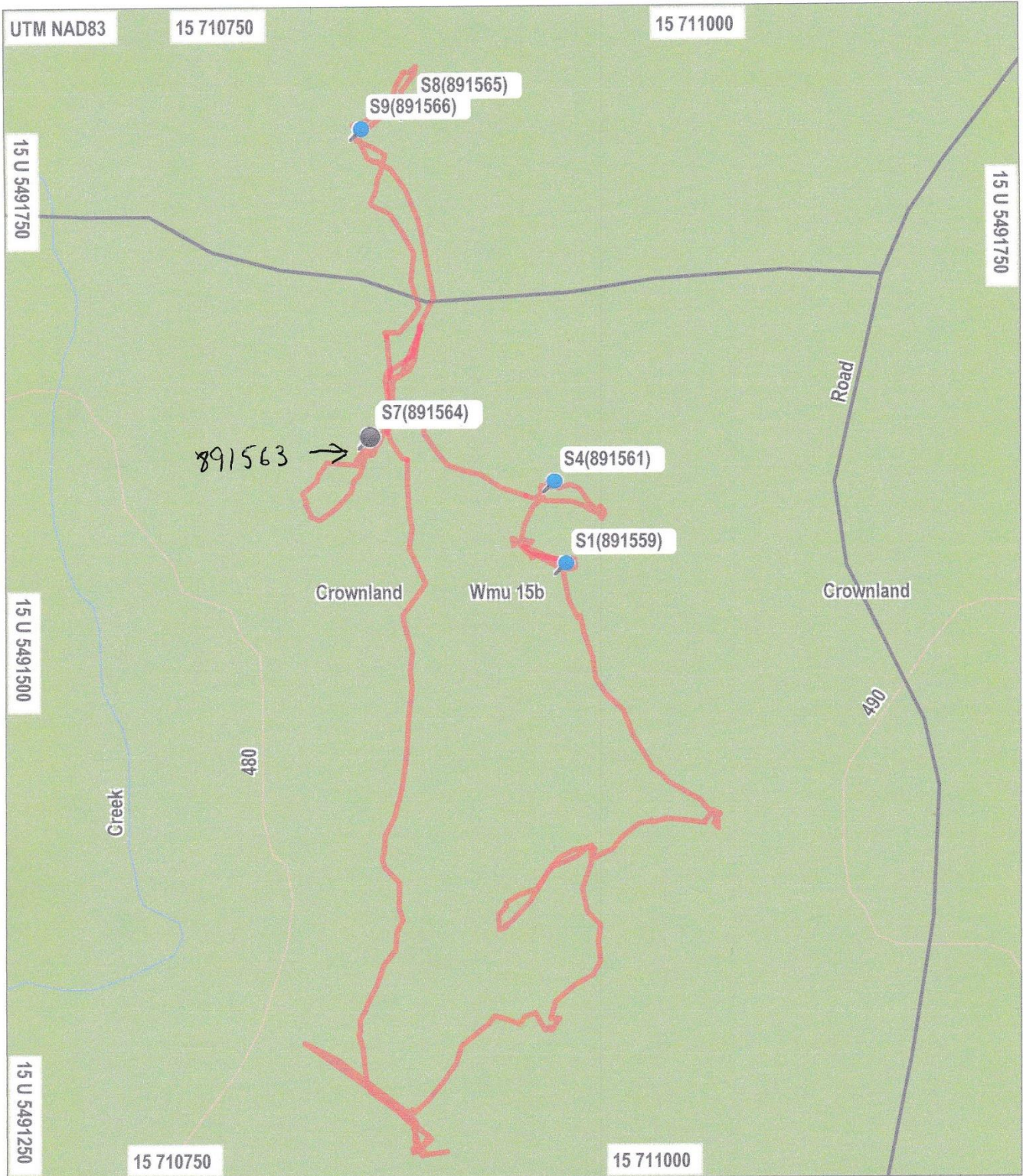
Imagery Copyright Notices: Ontario Ministry of Northern Development, Mines, Natural Resources and Forestry; NASA Landsat Program; First Base Solutions Inc.; Aéro-Photo (1961) Inc.; DigitalGlobe Inc.; U.S. Geological Survey.

© Queen's Printer for Ontario, 2022

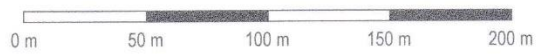




GPS Track May 13th, 2020



Backroad Mapbooks ON v6.0  
Ontario Backroad GPS Maps v6  
© Backroad Mapbooks 2015



Gem assess 2

Tracks for May 13/20







Backroad Mapbooks ON v6.0  
 Ontario Backroad GPS Maps v6  
 © Backroad Mapbooks 2015



Gem assess 3  
 Tracks for May 19 / 2020







Backroad Mapbooks ON v6.0  
Ontario Backroad GPS Maps v6  
© Backroad Mapbooks 2015



GEM assess

Track for May 28/20









Sample Location/ Description Table

Sample Tag	Date Sampled	UTM	Northing	Easting	Sample Description
a891558	may 13/2020	15u	710941	5491558	Limonite stained f.g sheared light gray host rock
a891559	may 13/2020	15u	710915	5491570	lemonite stained with some visible chalco in a f.g gray host rock
a891560	may 13/2020	15u	710918	5491570	Light lemonite stained and chlorite host with white gray Qtz.
a891561	may 13/2020	15u	710933	5491602	tightly banded with strong lemonite stain. Turned red with nickel powder test.
a891562	may 13/2020	15u	710837	5491694	Strong exterior lemonite stained.Fresh surface is f.g grayish white host with some glassy gray Qtz.
a891563	may 13/2020	15u	710836	5491622	Strong lemonite stained exterior and fresh surface is f.g dark gray with no visable sulfides
a891564	may 13/2020	15u	710837	5491624	Qtz
a891565	may 13/2020	15u	710852	5491801	Composite float. Milky white Qtz with some chlorite and light red staining in Qtz.
a891566	may 13/2020	15u	710825	5491789	Composite float. Milky white Qtz with light red staining in Qtz.
a891551	may 19/2020	15u	710423	5492043	White Qtz with Clorite- No Py
a891552	may 19/2020	15u	710977	5491822	2 cm White Qtz in f.g biotite with few small garnets
a891553	may 19/2020	15u	711063	5491735	2-3% py
a891554	may 19/2020	15u	711022	5491701	Glassy light gray Qtz and light limonitic stain on suface
a891555	may 19/2020	15u	711021	5491705	3% pyrite heavy limonite/fractured
a891556	may 19/2020	15u	711001	5491632	Very oxidized lemonite staining- sheared with light gray Qtz
a891557	may 19/2020	15u	711001	5491633	limonite stained on glassy light blue gray Qtz
a891567	may 19/2020	15u	711949	5490884	Dark blue gray cherty Qtz. In shear with blotchy light rust in host.
891568	may 29/2020	15u	711	549	very magnetic/very fine grain dark mica/hematite stained granular qtz with black mineral-Zinc??.
891569	may 29/2020	15u	711	549	Very rusty with Cu specks/ poss. Anthophllite??
891570	may 29/2020	15u	711949	5490884	White Qtz crosscutting vein
891571	may 29/2020	15u	711	549	Blue gray qv no sulfides
891572	may 29/2020	15u	711	549	Combined sample/rusty mafic slightly magnetic/ Hemititic Qtz.
891573	may 29/2020	15u	711949	5490884	slightly magnetic 1.5-2 m wide felsic with streaks of 3% py
891574	may 29/2020	15u	711	549	slightly magnetic rusty mafic with <1%Cu and coarse grain py.
891575	may 29/2020	15u	711	549	small fragments along qtz sweat
891576	may 29/2020	15u	711	549	non magnetic dark gray wall rock with visable Cu and 1 cm Zn ??
891577	may 29/2020	15u	711	549	Rusty wth blotchy cg Py
891578	may 29/2020	15u	711	549	slightly magnetic dark glue mafic with tiny streaks of py or po.
891579	may 29/2020	15u	711	549	none magnetic rusty sercite with 1% py

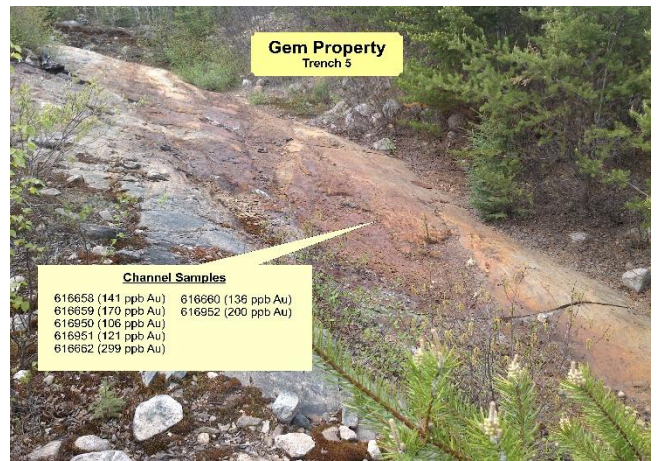




15u 711071/ 5491734



Sericite Schist



15u 711276/ 5441589



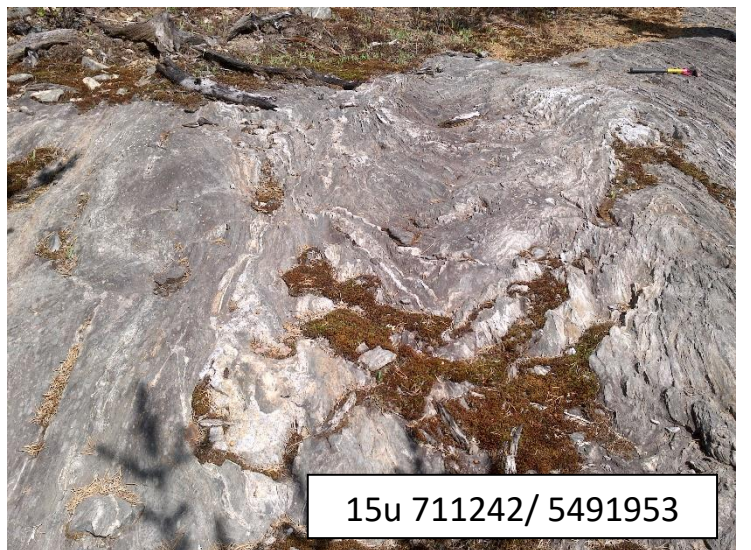
15u 710403/ 5491691



15u 710552/ 5491591



15 u 710977/ 5491822



15u 711242/ 5491953

Outcrop Picture GPS Locations

Gem Property Trench 5

Channel Samples

616656 (141 ppb Au)	616660 (136 ppb Au)
616659 (170 ppb Au)	616952 (200 ppb Au)
616650 (106 ppb Au)	
616951 (121 ppb Au)	
616652 (299 ppb Au)	





15u 710834/ 5491613



15u 710403/ 5491691



15u 711349/ 5491902



15u 711312/ 5491178



15u 711312/ 5491164



15u 711286/ 5491602  
Trench #5