

We are committed to providing [accessible customer service](#).

If you need accessible formats or communications supports, please [contact us](#).

Nous tenons à améliorer [l'accessibilité des services à la clientèle](#).

Si vous avez besoin de formats accessibles ou d'aide à la communication, veuillez [nous contacter](#).

Mallard Township Mining Claims Work Report:

Completed by John (Christopher) Leblanc
Prepared on May 5, 2022

Dates included in this report:
October 17, 2020
October 18, 2020
May 3, 2022

Mallard Twp. Work Report for MNDM

The following work report is for claim #'s 276247, 229018, 221035, 155685 which are located in Mallard Township near Ramsey Ontario. The legacy claim number is 4279005. The work included in this report was completed on October 17 and 18, 2020 and May 3, 2021. The work was completed by John (Christopher) Leblanc, and John Leblanc Sr. The report was prepared by John (Christopher) Leblanc.

Location: SEE CLAIM BOUNDARY MAP AT THE END OF THIS DOCUMENT

Mallard Twp is located approximately 220 km north-west of Sudbury Ontario in the Opeepeesway / Woman river area. It is accessed by driving 150 kms north from Sudbury on Hwy 144 to Sultan Road at the Watershed Restaurant. At the Watershed Restaurant turn left onto Sultan Rd and travel 45 Kms to Mallard Road. At Mallard Road, turn right and travel 25 kms to the Opeepeesway River bridge where the claims are located.

History:

In the past several decades, this area has shown excellent Au values in Mallard and Osway townships. The abandoned Jerome Mine is located on Opeepeesway Lake in Osway Township, which is adjacent to Mallard township. Recent exploration by IamGold has resulted in high Au values across several drill result intersections on the former mine property. Previous exploration in the area has also generated good results from grab sample assays and exploratory drilling assays.

Included in this work report are assay results from soil samples obtained in October 2020. Grab samples were also obtained, but have not been assayed as of the date of this report's filing. The reported soil samples 1 - 4 were obtained in October of 2020 and sent for assay. Unfortunately, due to a smart phone malfunction, the GPS location reference photos for samples 1 – 4 have been lost and were unrecoverable. New samples 5 – 8 were obtained on May 3, 2022 and will be sent for assay (see pictures).

Previous Works:

The following are based on assessment reports filed with MLAS of Ontario.

1931-1935: Woman River Gold Syndicate completed trenching and pitting along the Woman River and Opeepeesway Rivers. The former later became known as the River Zone (as termed by Noranda Exploration Ltd.).

1963: Anaconda American Brass Ltd. completed 11 drill holes totalling 1250 m (4,100 feet). Numerous graphitic metasediments containing sections of pyrite and pyrrhotite mineralization was interested. The logs also mention the intersection of altered feldspar porphyry with trace sulphide mineralization being intersected. Assays were not provided.

1970-1971: Bulldog Mines Ltd. completed geological mapping, magnetometer, and electromagnetic surveys.

1970-1971: Pancea Mining and Exploration Ltd. completed magnetometer and electromagnetic surveys.

1972: Claw Lake Mines Ltd. completed airborne geophysical surveys.

1974: Cominco Ltd. completed and airborne electromagnetic survey, line cutting, followed by magnetometer and electromagnetic (Max-Min) surveys.

1975-1976: US Steel International Ltd. completed prospecting, soil sampling, geological mapping and electromagnetic surveys.

1976: Gulf Minerals completed 2 drill holes west of the Opeepeesway River and south of the bridge. Assays are not provided in the drill logs.

1976: W.G. Wahl Ltd. completed two diamond drill holes totalling 256 m. The drill holes intersected a 60 cm wide section of massive pyrite and iron formation.

1979-1984: Adeline International Mines Ltd. completed line cutting, electromagnetic (VLF) & magnetometer surveys, geological mapping, stripping/trenching, and diamond drilling. Ten diamond drill holes were completed and intersected gold mineralization over narrow intervals was reported in the drill logs.

1981: Benton Resources Inc., Osway Resources Inc., Mallard Resources Inc., and the 4x4 Syndicate completed a regional airborne electromagnetic and magnetic surveys over Benton, Esther, Mallard, and Osway Townships. Several conductors were recommended for follow up.

1982: Granges Exploration AB completed line cutting and electromagnetic surveys, along with four drill holes in proximity to Opeepeesway Lake. No significant mineralization was intersected.

1984-1985: Berle Resources Ltd., Kidd Resources Ltd., and Noranda Exploration completed line cutting, soil sampling, geological mapping, magnetometer surveying, and channel sampling. Twelve drill holes totalling 2024.8 m (6,643 feet) were completed on the River and Camp Zones.

1985: Blue Falcon Gold Mines Ltd. completed airborne geophysical surveys over 15 townships in the Swayze area.

1989: Jarvis Resources Ltd. completed 9 diamond drill holes totalling 1086.6 m (3,565 feet). The holes were proximal to the drilling sites completed by Adeline International Mines Ltd. located northwest of the Opeepeesway River bridge. No significant mineralization was noted in the drill logs.

1991-2019: J.R. Morin completed prospecting and diamond drilling located east of the Opeepeesway River bridge. Grab samples up to 9.2 oz/t Au were obtained from a shear zone.

1996-2000: Sterling Mac Resources/Anderson completed line cutting, geophysical surveys (Induced Polarization (IP), electromagnetic (VLF), and magnetometer), and prospecting over the River Zone and further south along the west side of the Opeepeesway River. Fancamp Exploration Ltd. Exploration Works

2019-2020: Mallard Property 11 2001: Liberty Mineral Exploration Inc. completed mechanized stripping of geophysical targets previously outlined by Sterling Mac and Anderson along the west side of the Opeepeesway River. The anomalies were not explained, and the best assay was 122 ppb Au.

2006: D. McKinnon completed mechanized stripping northwest of the Opeepeesway River bridge. A total of approximately 1,500 m² was exposed. No sampling was completed. 2012: Nebu Resources Inc. completed magnetometer and Induced Polarization (IP) surveys, and six diamond drill holes totalling 1,137 m on the east side of the Opeepeesway River. Low grade gold values were intersected over narrow intervals (<1 m). 2013: Nebu Resources Inc. completed additional drilling on the west side of the Opeepeesway River testing additional IP anomalies. This work was not filed for assessment, and casings were pulled following the completion of the drill hole. The author attempted to retrieve the drill logs from Nebu Resources.

2018: Fancamp completed an electromagnetic and magnetic airborne survey over the present claims, and followed this up with a limited reconnaissance prospecting and surface geochemical sampling.

Information above was obtained from previous reports filed with MLAS.

Regional Geology:

The property is located within the Swayze greenstone belt, part of the western Abitibi Subprovince. The Swayze greenstone belt is bound to the north by the Nat River granitoid complex, to the west by the Kapuskasing Structural Zone, the south by the Ramsey-Algoma granitoid complex, and the east by the Kenogamissi granitoid complex.

Sample Preparation:

Soil samples of approximately 1kg each were obtained from 8 locations on the property. 4 of these obtained in October of 2020 were labelled and sent to Swastika Laboratories in Swastika, Ontario for assay (see attached assay results). Unfortunately, the GPS reference pictures from these samples were lost due to a malfunction of a smart phone and were unrecoverable. The most recent samples were obtained on May 3rd, 2022 (see attached pictures with GPS reference points). They will be sent for assay asap. Panning at the locations referenced on the map of this report were completed, but no trace of Au was found and no further panning will be completed. It was determined that placer gold is historically not present in the area, and continuing to pan in the area would be meritless.

Results of sampling:

October 16, 17 2020

Soil Samples 1 through 4 obtained in October 2020 were sent for assay at Swastika Laboratories who reported the following results (see attached certificate). Unfortunately the pictures from this prospecting trip were lost due to a smartphone failure.

Claim 276247, Sample # 1 location: N47.698455, -W82.277513

Appearance: Reddish-brown, silty sand.

Topography: Flat

Result: 10 ppb

Claim 155685, Sample # 2 location: N47.697863, -W82.273929
Appearance: Grey silty sand
Topography: Flat
Result: 10 ppb

Claim 221035, Sample #3 location: N47.699336, -W82.273586
Appearance: Dark brown coarse sand
Topography: Slight westward slope
Result: 20 ppb

Claim 229018, Sample #4 location N47.699856, -W82.275989
Appearance: Reddish- brown silty soil
Topography: Flat
Result: 10 ppb

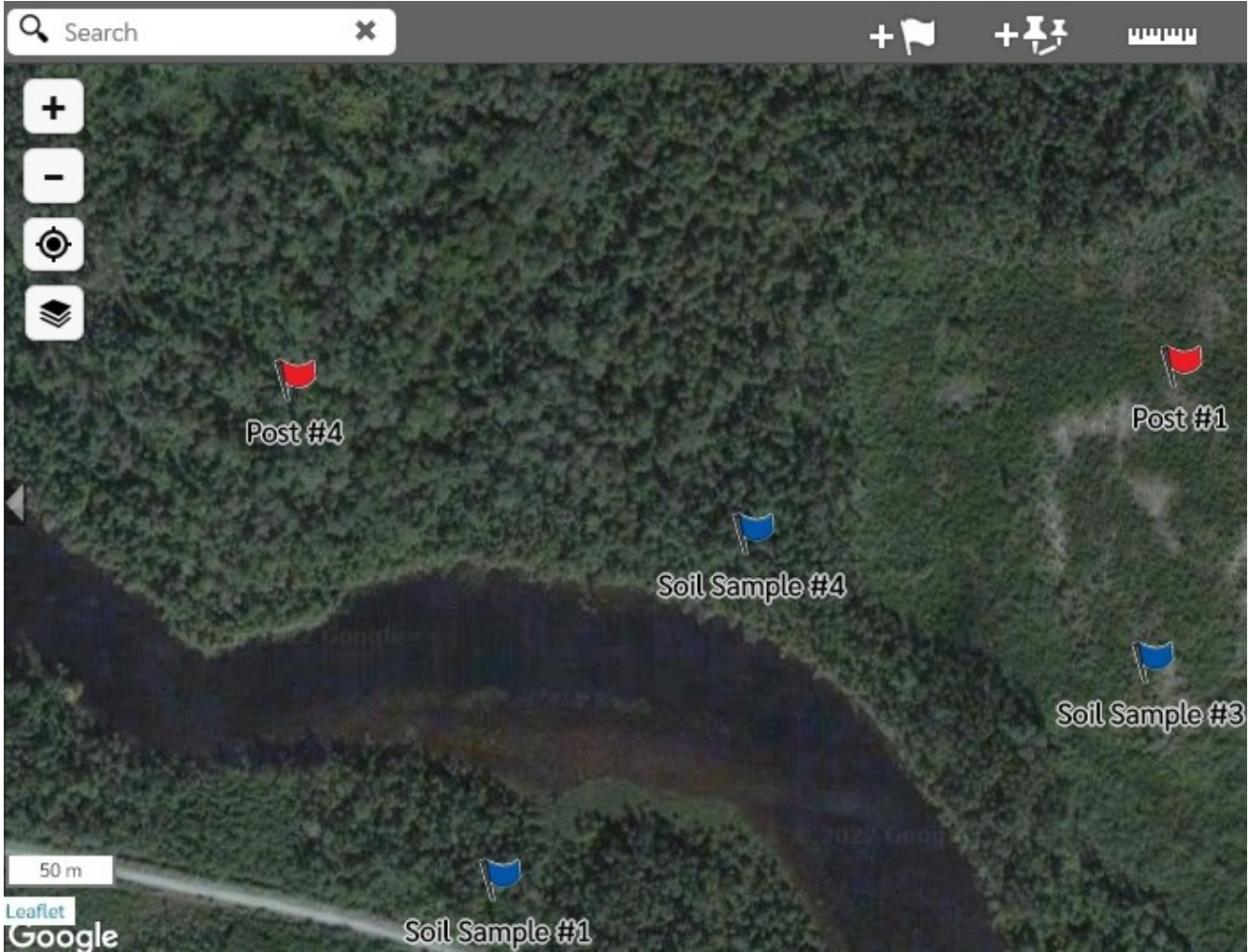
May 3, 2022

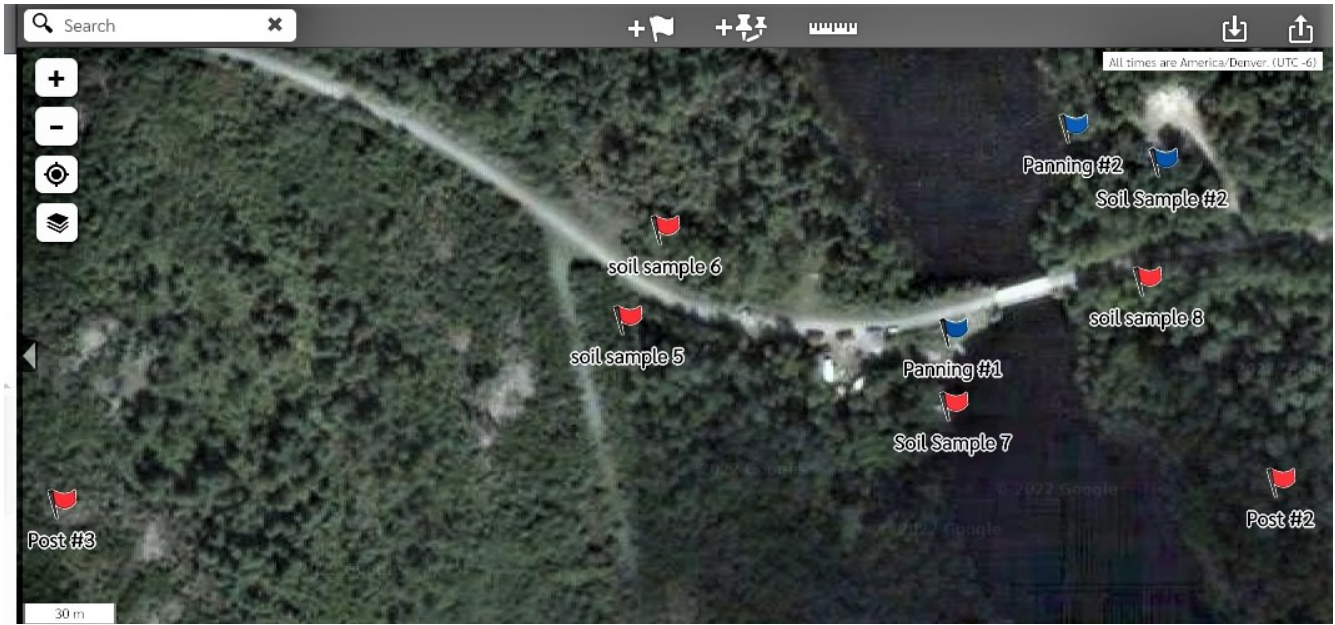
Claim 276247, Sample #5 location N47.697409, W-82.276233
Appearance: Dark brown medium coarse gravel
Topography: Flat
Result: TBD

Claim 276247, Sample #6 location: N47.697667, W-82.276071
Appearance: Brown medium coarse gravel
Topography: Flat
Result: TBD

Claim 155685, Sample #7 location: N47.697160, W-82.274831
Appearance: Reddish brown silty sand
Topography: Flat
Result: TBD

Claim 155685, Sample #8 location N47.697519, W-82.273999
Appearance: Light brown medium coarse gravel
Topography: Flat
Result: TBD







LINE-X
PROTECTANT
1000000000

GARRETT METAL DETECTORS

Since 1994

Since 1994

GOLD TRAP



garrett.com

SOIL SAMPLE # 5
MALLARD TWP
N 47.697409
W 82.276433



Zipper Seal
Soil Sample #6
MALLARD TWP.
N 47.697657
W 82.276074

Zipper Seal
Soil Sample #7
MALLARD TWP
N 47.697160
W 82.274831

Zipper Seal

Soil Sample # 8
MALLARD TWP
N 47.697519
W 82.273999

Exploration Results:

Taking the history of the area into consideration, more hard rock samples via grab and channel sampling must be done. The previously assayed soil showed trace amounts of au. Once the results of the newest samples are assayed, a decision will be made whether to pursue any more soil sampling. The plan moving forward is to obtain more hard rock samples from several new locations, and to continue prospecting unexplored areas of the property. The intention for 2022 is to take some small core samples utilizing a portable core drill which I have access to. The property shows potential and must be explored further.

Daily Log:

October 17, 2020:

- ~ John Christopher Leblanc and John Leblanc Sr. traveled to site from Sudbury, ON. Arrived late afternoon.
- ~ John Christopher Leblanc and John Leblanc Sr. obtained soil samples #1 and #2.
- ~ John Christopher Leblanc and John Leblanc Sr. panned for au at the locations indicated on the map provided above.

October 18, 2020:

- ~ John (Christopher) Leblanc and John Leblanc Sr. walked the noted locations to obtain soil samples #3 and #4
- ~ Traveled back to Sudbury, ON

May 3, 2020

- ~ John Christopher Leblanc and John Leblanc Sr. traveled to site from Sudbury, ON. Arrived mid-afternoon
- ~ Obtained samples # 5, #6, #7 and #8
- ~ Returned to Sudbury, ON

Expenses:

220 Kms x 4 (two return trips) @ .50 / km = \$440

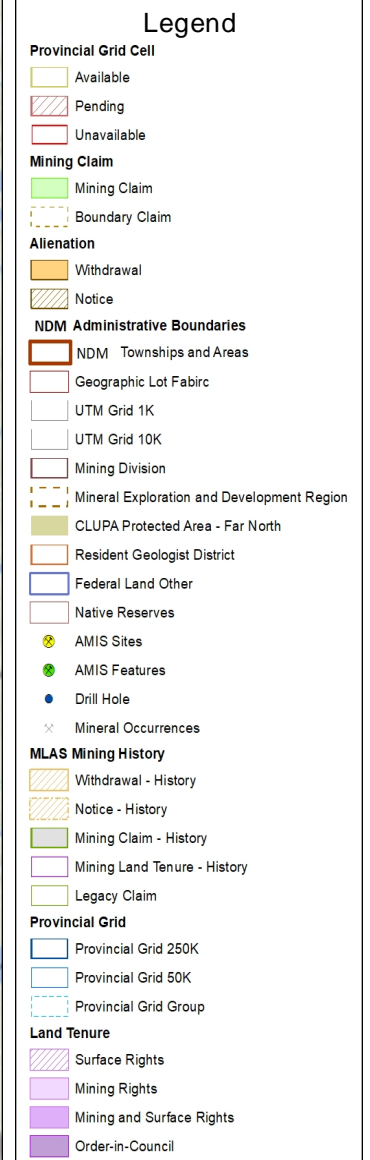
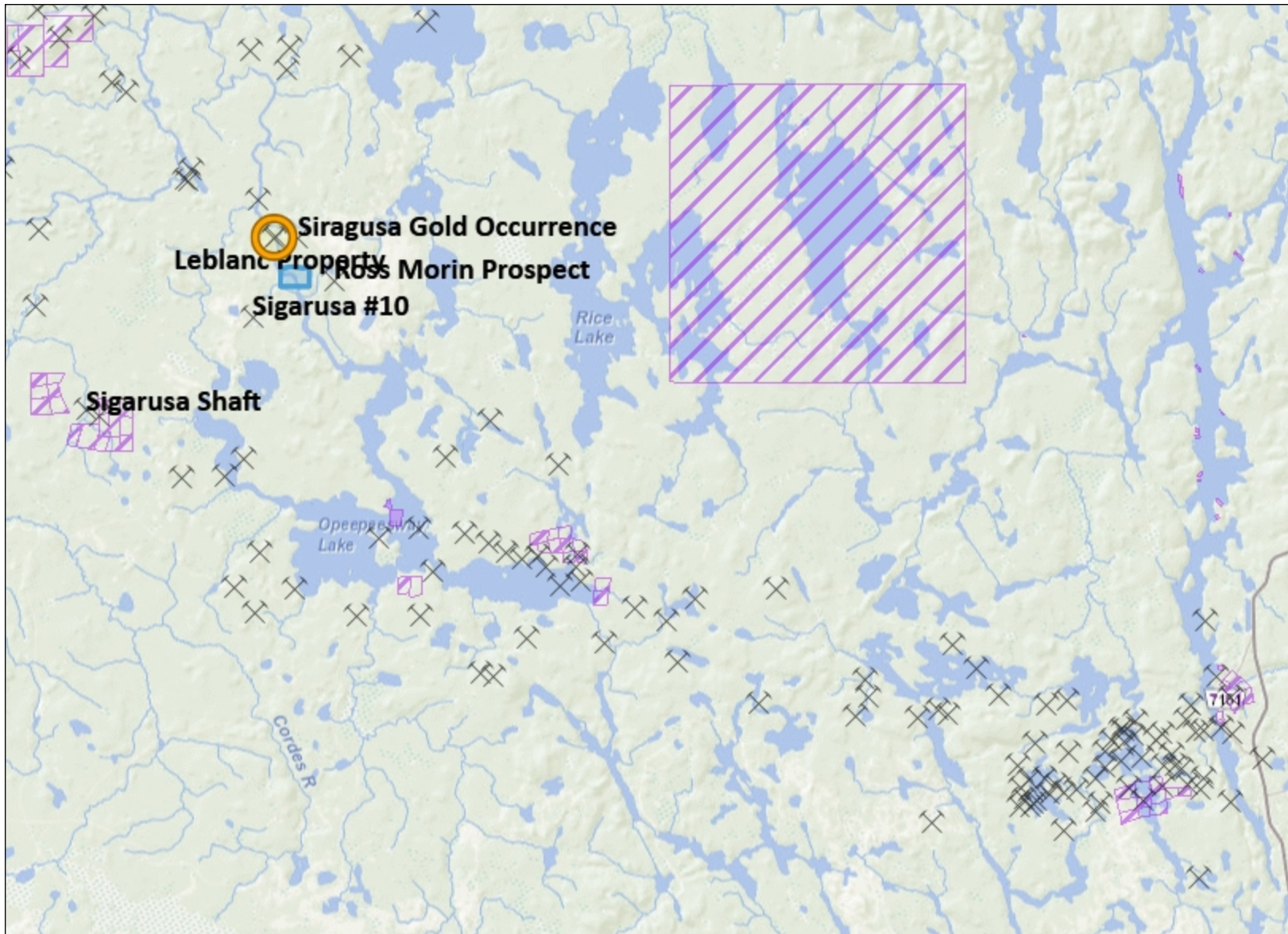
Per diem for two people @ \$150 / day per person x 3 days = \$900

Assay report = \$135.60

Total = \$1475.60 to be distributed evenly between claims 276247, 229018, 221035 and 155685.

Claim Boundary Map:

The screenshot displays the Ontario MLAS Map Viewer interface. The browser address bar shows the URL: <https://www.linfoapplications.lrc.gov.on.ca/MLAS/Index.html?viewer=mlas.mlas&locale=en-US&appAcronym=mlas>. The page header includes the Ontario logo and the text "MLAS Map Viewer" and "Ministry of Northern Development, Mines, Natural Resources and Forestry". A navigation menu at the top contains "About", "Navigation", "Map Information", and "Markup & Printing". A search bar at the top left contains the text "I want to..." followed by "270649". The main map area shows a grid of land parcels with various labels, including "PAT-10643", "PAT-10644", "PAT-10645", "PAT-10646", "PAT-10647", "PAT-10648", "PAT-10649", "PAT-10650", "PAT-10651", "PAT-10652", "PAT-10653", "PAT-10654", "PAT-10655", "PAT-10656", "PAT-10657", "PAT-10658", "PAT-10659", "PAT-10660", "PAT-10661", "PAT-10662", "PAT-10663", "PAT-10664", "PAT-10665", "PAT-10666", "PAT-10667", "PAT-10668", "PAT-10669", "PAT-10670", "PAT-10671", "PAT-10672", "PAT-10673", "PAT-10674", "PAT-10675", "PAT-10676", "PAT-10677", "PAT-10678", "PAT-10679", "PAT-10680", "PAT-10681", "PAT-10682", "PAT-10683", "PAT-10684", "PAT-10685", "PAT-10686", "PAT-10687", "PAT-10688", "PAT-10689", "PAT-10690", "PAT-10691", "PAT-10692", "PAT-10693", "PAT-10694", "PAT-10695", "PAT-10696", "PAT-10697", "PAT-10698", "PAT-10699", "PAT-10700". The map also shows a scale bar (0 to 0.3km) and a search bar at the bottom left. The footer contains the text "Powered by Land Information Ontario" and "Accessibility Privacy Terms of Use © Queen's Printer for Ontario, 2021 Imagery Copyright Notices Provincial Recording Office NDM - contact 1-888-415-9845". The Windows taskbar at the bottom shows the time as 9:01 AM on 2022-05-06.



Those wishing to register mining claims should consult with the Provincial Mining Recorders' Office of the Northern Development and Mines (NDM) for additional information on the status of the lands shown hereon. This map is not intended for navigational, survey, or land title determination purposes as the information shown on this map is compiled from various sources. Completeness and accuracy are not guaranteed. Additional information may also be obtained through the local Land Titles or Registry Office, or the Natural Resources and Forestry. The information shown is derived from digital data available in the Provincial Mining Recorders' Office at the time of downloading from the Northern Development and Mines (NDM) web site.

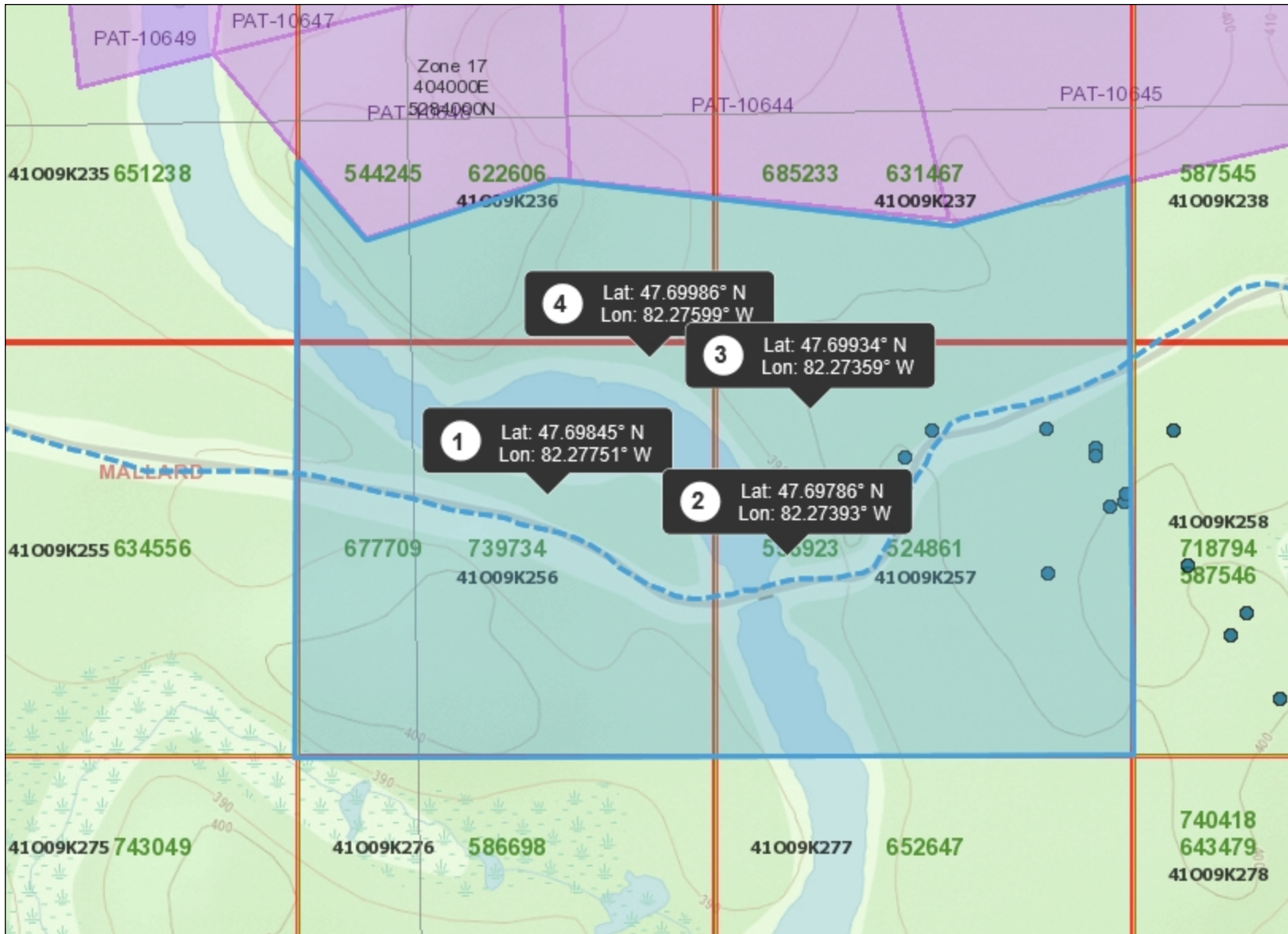
0 9.89 km

Projection: Web Mercator



Imagery Copyright Notices: Ontario Ministry of Northern Development, Mines, Natural Resources and Forestry; NASA Landsat Program; First Base Solutions Inc.; Aéro-Photo (1961) Inc.; DigitalGlobe Inc.; U.S. Geological Survey.
© Queen's Printer for Ontario, 2022





Legend

- Provincial Grid Cell**
 - Available
 - Pending
 - Unavailable
- Mining Claim**
 - Mining Claim
 - Boundary Claim
- Alienation**
 - Withdrawal
 - Notice
- NDM Administrative Boundaries**
 - NDM Townships and Areas
 - Geographic Lot Fabric
 - UTM Grid 1K
 - UTM Grid 10K
 - Mining Division
 - Mineral Exploration and Development Region
 - CLUPA Protected Area - Far North
 - Resident Geologist District
 - Federal Land Other
 - Native Reserves
- AMIS Sites**
 - AMIS Sites
 - AMIS Features
 - Drill Hole
 - Mineral Occurrences
- MLAS Mining History**
 - Withdrawal - History
 - Notice - History
 - Mining Claim - History
 - Mining Land Tenure - History
 - Legacy Claim
- Provincial Grid**
 - Provincial Grid 250K
 - Provincial Grid 50K
 - Provincial Grid Group
- Land Tenure**
 - Surface Rights
 - Mining Rights
 - Mining and Surface Rights
 - Order-in-Council

Those wishing to register mining claims should consult with the Provincial Mining Recorders' Office of the Northern Development and Mines (NDM) for additional information on the status of the lands shown hereon. This map is not intended for navigational, survey, or land title determination purposes as the information shown on this map is compiled from various sources. Completeness and accuracy are not guaranteed. Additional information may also be obtained through the local Land Titles or Registry Office, or the Natural Resources and Forestry. The information shown is derived from digital data available in the Provincial Mining Recorders' Office at the time of downloading from the Northern Development and Mines (NDM) web site.

0 0.34 km

Projection: Web Mercator



Imagery Copyright Notices: Ontario Ministry of Northern Development, Mines, Natural Resources and Forestry; NASA Landsat Program; First Base Solutions Inc.; Aéro-Photo (1961) Inc.; DigitalGlobe Inc.; U.S. Geological Survey.
© Queen's Printer for Ontario, 2022





Legend

- Provincial Grid Cell**
 - Available
 - Pending
 - Unavailable
- Mining Claim**
 - Mining Claim
 - Boundary Claim
- Alienation**
 - Withdrawal
 - Notice
- NDM Administrative Boundaries**
 - NDM Townships and Areas
 - Geographic Lot Fabric
 - UTM Grid 1K
 - UTM Grid 10K
 - Mining Division
 - Mineral Exploration and Development Region
 - CLUPA Protected Area - Far North
 - Resident Geologist District
 - Federal Land Other
 - Native Reserves
- AMIS Sites**
 - AMIS Sites
 - AMIS Features
 - Drill Hole
 - Mineral Occurrences
- MLAS Mining History**
 - Withdrawal - History
 - Notice - History
 - Mining Claim - History
 - Mining Land Tenure - History
 - Legacy Claim
- Provincial Grid**
 - Provincial Grid 250K
 - Provincial Grid 50K
 - Provincial Grid Group
- Land Tenure**
 - Surface Rights
 - Mining Rights
 - Mining and Surface Rights
 - Order-in-Council

Those wishing to register mining claims should consult with the Provincial Mining Recorders' Office of the Northern Development and Mines (NDM) for additional information on the status of the lands shown hereon. This map is not intended for navigational, survey, or land title determination purposes as the information shown on this map is compiled from various sources. Completeness and accuracy are not guaranteed. Additional information may also be obtained through the local Land Titles or Registry Office, or the Natural Resources and Forestry. The information shown is derived from digital data available in the Provincial Mining Recorders' Office at the time of downloading from the Northern Development and Mines (NDM) web site.



Imagery Copyright Notices: Ontario Ministry of Northern Development, Mines, Natural Resources and Forestry; NASA Landsat Program; First Base Solutions Inc.; Aéro-Photo (1961) Inc.; DigitalGlobe Inc.; U.S. Geological Survey.
© Queen's Printer for Ontario, 2022

