

We are committed to providing [accessible customer service](#).

If you need accessible formats or communications supports, please [contact us](#).

Nous tenons à améliorer [l'accessibilité des services à la clientèle](#).

Si vous avez besoin de formats accessibles ou d'aide à la communication, veuillez [nous contacter](#).

PROSPECTORS REPORT

MINING CLAIM 582579

SUMMARY OF FIELD WORK

SUMMER 2020 and FALL 2021

Submitted by David J Ross

## Summary of Field Work- Prospectors Report

Field work in 2020 and 2021 was conducted by David J Ross (License C39006) of Barrie Ontario.

Chris Ross, University student assisted with field work.

### LOCATION

Prospecting Mining claim 582579 is located on the S ½ Lot 9 Con 11, Monmouth Township, Highlands East, County of Haliburton, in Ontario Claim block 31D16K169. The claim is on Crown Land in the Southern Mining Division of the Ontario Ministry of Northern Development and Mines. Access and reference claim location is shown in Figure 1. It is accessed through Crown land east of Madill Road, where it becomes the Wildcat Trail. Parking for the claim is approximately 130 metres eastward on the trails north side, across from the access to the previously known Bear Lake Diggings. Access was also provided through private land by the owner of the last house on Madill Road.

Claim 58257 is staked for commercial mineral specimen potential, and possible future mineral tourism. There is substantial evidence of mineral collecting for this area in recent years. The claim was previously staked in the 1980's to access the bounty of mineral specimens in the area. Mineral collectors were encountered exiting the claim, while prospecting. A local mineral guide, with permission, accessed the claim during the period of this report. The area receives many visitors due to trail access, including rockhounds, hunters of game, ATV's, snowmobiles, hikers, and harvesters of wild leeks (ramps).

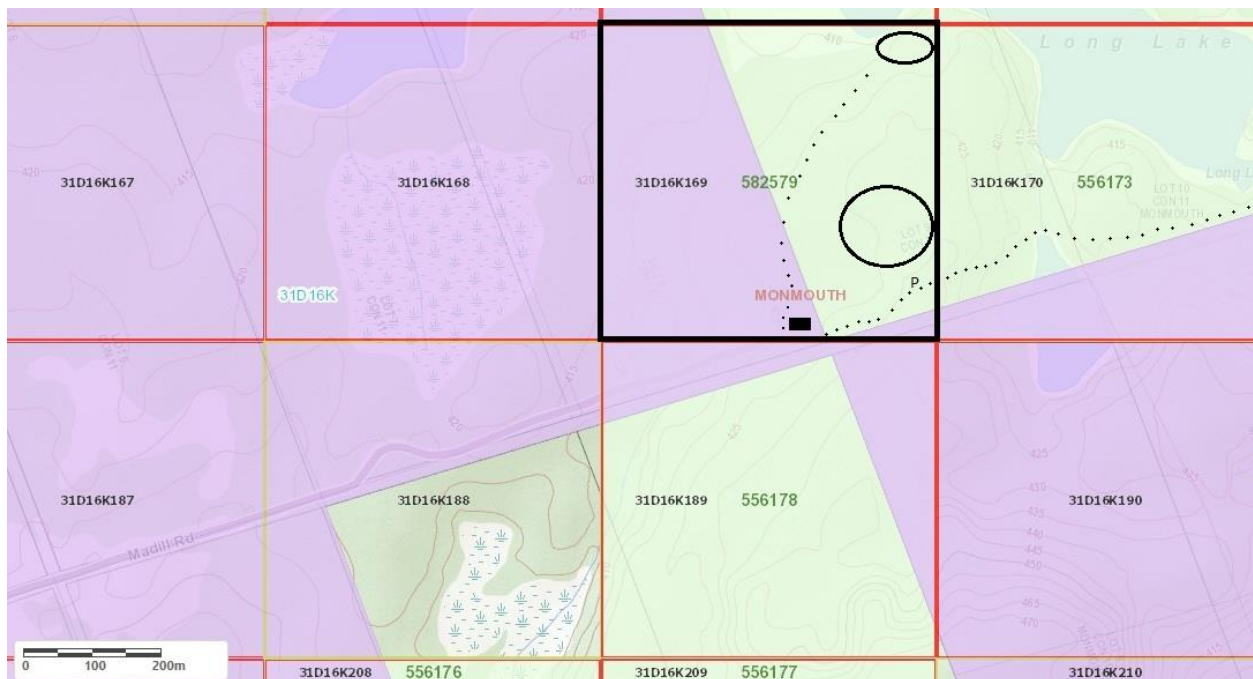


Figure 1. Monmouth Claim 582579, field survey areas, and access.

**See Figure 1 revision on page 7**

## FIELDWORK

This report summarizes early grass roots field investigation on three field visits, for a total of 2 days work; July 3 2020 ½ day (sites 252-256), Aug 2 2021 ½ day (sites 2-4), and 1 day Nov 7 2021 (sites 72-78). See figure 2. Claim visit ½ days occurred when working adjacent claims on the same day. Work on claims registered with a different anniversary will be in a separate report.

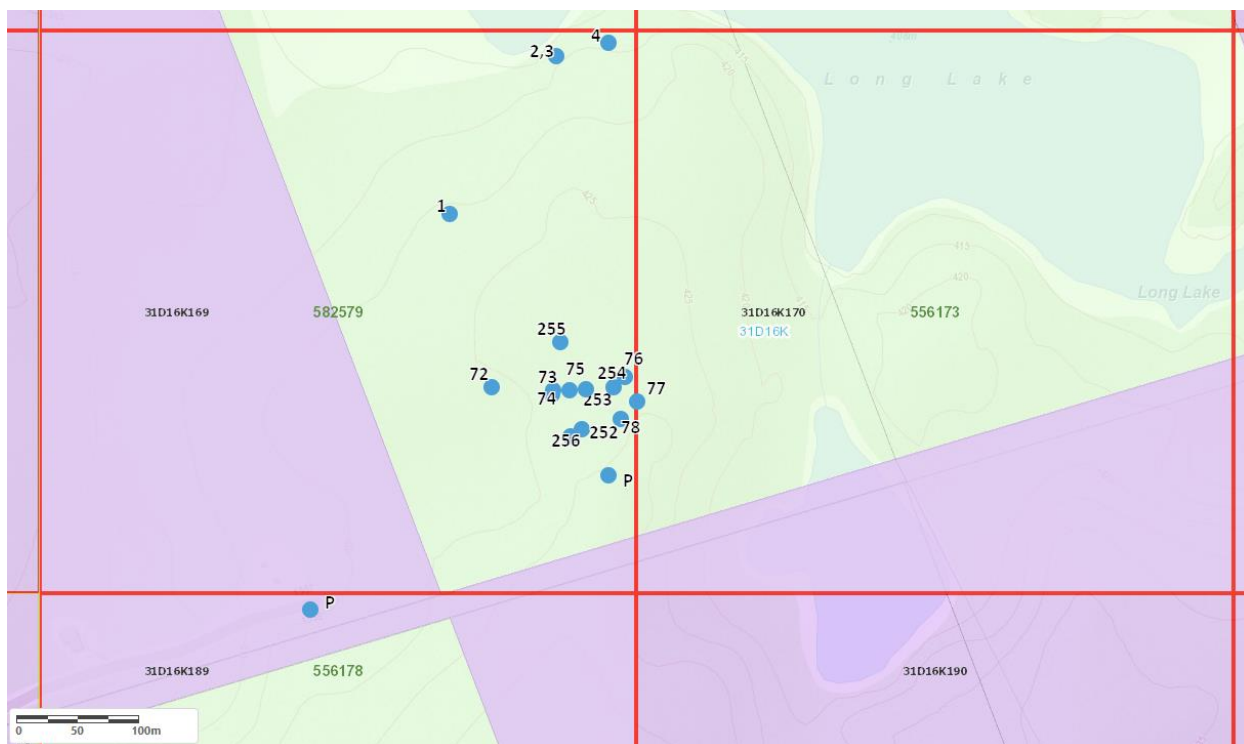


Figure 2. Monmouth Claim 582579, site locations of field data collection, parking and access.

**See Figure 2 revision on page 8**

## DATA COLLECTION

Information collected is summarized in Table 1 and identifies:

1/UTM

2/elevation

3/site feature

4/rock type/mineralization

5/photo numbers. Note: Digital photos are attached as a separate file appendix in pdf format.

Table. Field data Mining Claim 582579 for 2020 and 2021

Date	Site	Claim Number	UTM 17T	Elevation (m)	Photos	Strike degrees	Feature	Rock Type Mineralization	Comments
2020.07.03	252	582579	0711411, 4982415	431				mica, hornblende, fluorapatite	
	253		0711414, 4982448	422			hole 2 metres deep, looking uphill 30 m at 1.5 m wide, calcite vein dike		
	254		0711436, 4982450	424				fluorapatite, mica books	
	255		0711391, 4982486	426			evident that dug previously	orthoclase/K feldspar, fluorapatite, biotite mica, titanite, quartz	
	256		0711402, 4982409	433			hole, 3m across	mica apatite present	
	257		0711192, 4982259	425					Parking Location
2021.08.02	1	582579	0711297, 4982588	429					
	2		0711380, 4982721	413	645, 646, 650, 651, 653, 654, 3320	13	Steep slope where rock enters water. Opening at Long Lake looking out from shore, across from island outcrop. Exposed rock face.	Felsic, quartzite, (40% qtz, 30% black, 30% feldspar)	
	3		0711380, 4982721	415	656, 657, 659	312	A few metres uphill from site 2, calcite vein dike	Mica books 0.5-12cm, calcite vein, darker feldspar, small pieces of fluorapatite in calcite vein dike.	-note, existing flagging tape at site
	4		0711423, 4982734	428		110	upslope connected to site 3, Calcite vein. Exposed rock face.	Feldspar (18%), qtz 30%, black min 52%)	
2021.11.07	72	582579	0711366, 4982447	419	1102, 1104-1112, 6702, 6706		cave on side of 5 m X 10 m calcite depression, vein dike,	calcite, hornblende to 12 cm wide, fluorapatite 2mm to 6 cm Diam, Biotite Mica up to 10 cm Diam, also massive K feldspar w quartz	
	73		0711387, 4982447	422	1113-1116		calcite vein 10m long, up to 1.5 M wide, excavated previously	fluorapatite 1 to 3 cm diam, up to 8cm long, hornblende to 5cm at West end, mica to 6cm	

	74		0711386, 4982442	416	1117-1119, 1124	93	20 M long existing trench, up to 2 m wide, west side 1.5 m deep, rockhound previously excavated	calcite, black mica fine grain to 8cm, fluorapatite, feldspar to 2 cm, wall of mica books	
	75		0711400, 4982447	430	1126, 1128-1130	92	steep slope, 20 metres long calcite vein	northerly face fine grained feldspar w fine grained mica	
	76		0711455, 4982459	440	1131-1133, 6717, 6718, 6722, 6724	101	35 metres long eroded calcite vein	fine grained feldspar, hornblende, feldspar, titanite to 6cm, fluorapatite, calcite	
	77		0711457, 4982439	432	1134-1139	99	exposed rock face	multiple quartzite clast, in fine grained feldspar	
	78		0711443, 4982424		1140-1143, 1145, 1149	111	rockhound disturbance, with broken rock used as fill	banded quartzite,, black crystals - amphibole	

## SUMMARY of OBSERVATIONS

Many old trenches and holes proliferate the landscape, with disturbed areas of past mineral enthusiasts rehabilitating/regenerating naturally with the organic build up from leaf litter and movement of soil by runoff of rain and snowmelt. Often the recolonization/natural succession of herbaceous plants, and occasionally small trees is evident. The degree of plant regeneration varies throughout the area, yet the forest demonstrates it is quite efficient at covering up many of the collecting disturbances of previous visitors.

This early site Investigation included looking for exposed rock from natural processes and from previous activities of the former Claim Holder and rockhounds. Rock faces, reaching under rock faces, and sifting through dirt at the edge of rock faces were used to gather information for site characterization.

Many depressions are observed in the topography of Claim 582579, reflecting calcite vein dike occurrences and the dissolution of calcite over time. After calcite dissolution minerals are freely deposited in soils adjacent to rock faces of the eroded calcite vein dikes. Northern and southern parts of the claim both revealed calcite vein dikes, however they are particularly plentiful in the south eastern part. Strike orientation of the vein dikes may be similar when in close proximity to each other, but seems generally more variable within the larger area, when looking at the south eastern part of the claim, and north eastern part. Historical trenches and vein dike depressions were observed up to 30 metres long, up to 3 metres across and with holes up to 2 metres in depth.

Field visits show calcite veins on the claim typically contain biotite mica, fluorapatite, orthoclase/microcline feldspar, hornblende (calcium amphibole subgroup -much of it locally known to be ferri-fluoro-katophorite). Titanite was also encountered. At one location a large depression ranging

from 5 to 10 metres in diameter revealed a small cave with walls containing calcite, fluorapatite (2mm to 6 cm diam.) hornblende to 12 cm, and biotite mica to 10 cm.

Whatever the sequential rock forming and mineralization in calcite vein dikes might be, the influence of rock occurrence on mineralization at vein dikes deserves investigation. A detailed mapping of the claim would be useful, to show calcite vein dike occurrences, orientation within the claim unit, and the geological features in contact with the calcite vein dikes, to determine size, occurrence, composition, and the potential for mineralization. Initial assessment suggests efforts to mapping and selection of target sites is warranted. The karst landscape/topography offers excellent potential for mineral exploration.

#### FUTURE PROSPECTING

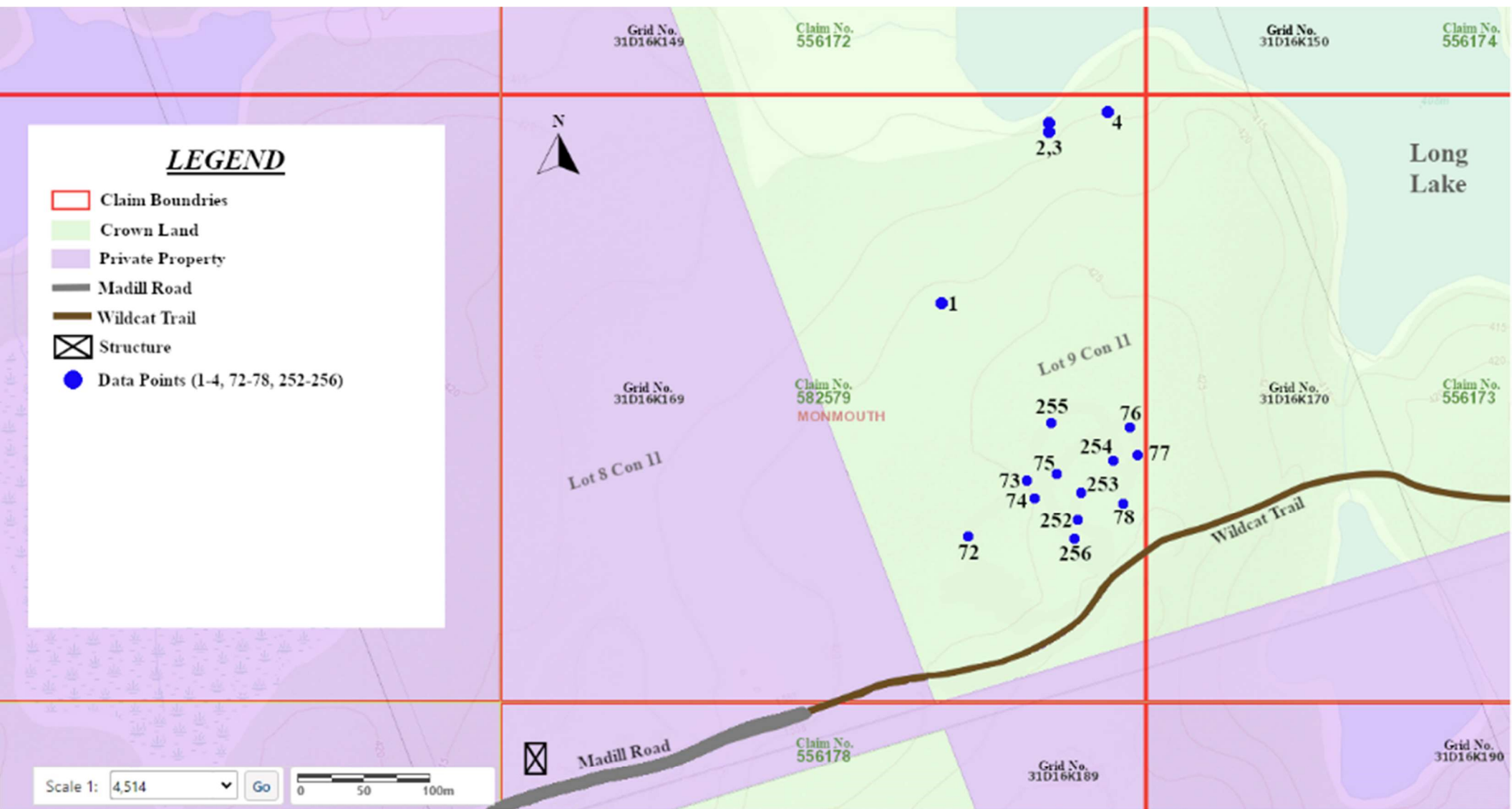
Field work conducted suggests significant mapping for the area is warranted.

Results and plans for future mineral exploration will be discussed with the MNDM Regional Geologist in Tweed. An application for a work permit to conduct excavation and trenching will be considered to assist with mineral assessment for the area.



*Figure 1. Claim 582579, Monmouth Township, Highlands East, Access & Traverses, 2020 & 2021*





**Figure 2. Claim 582579, Sites of Mineral Occurrences encountered in Grass Roots Prospecting, as described in Table 1.**

582579 Work Credits

David J Ross

License (C39006)

Work and Expenses Summer 2020 and Fall 2021

Prospecting Field Work

July 3 2020, ½ day, \$175

Aug 2 2021, ½ day \$175

Nov 7 2021, 1 day, \$350

Report Preparation

2 days @ \$300 per day, \$600

Travel

Home residence to work site (17 Kinzie Lane to Madill Road)

July 3 2020, ½ mileage is 146 km @ .59 cents, \$86.14

Aug 2 2021, ½ mileage is 146 km @.59 cents, \$86.14

Nov 7 2021, 292 km @.59 cents, \$172.28

Prospecting Field Work                      \$700

Report Preparation                              \$600

Travel    \$344

Total Work Credits                              \$1644

Claim 582579

Photos 2021.11.07

Site 72, 73, 74,75, .....(24 photos)



Site 72 (photo 1102)

Claim 582579



Site 72 (photo 1104)

Claim 582579



Site 72 (photo 1105)

Claim 582579



Site 72 (photo 1106)

Claim 582579



Site 72 (photo 1107)

Claim 582579

Site 72 (photo 1107)



Site 72 (photo 1108)



Claim 582579



Site 72 (photo 1109)

Claim 582579



Site 72 (photo 1110)

Claim 582579



Site 72 (photo 1111)

Claim 582579



Site 72 (photo 1112)

Claim 582579



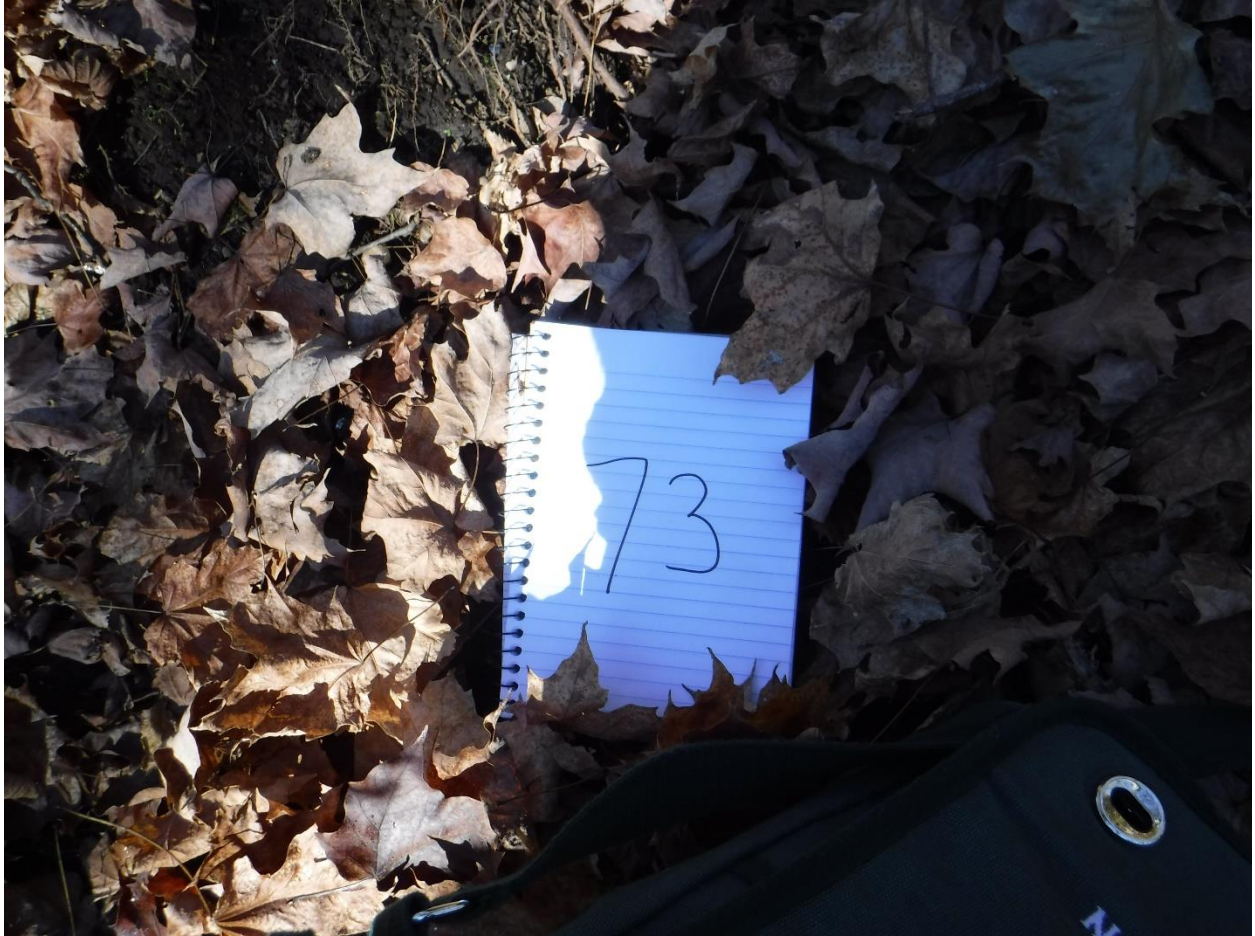
Site 72 (photo 6702)

Claim 582579



Site 72 (photo 6706)

Claim 582579



Site 73 (photo 1113)

Claim 582579



Site 73 (photo 1114)



Claim 582579



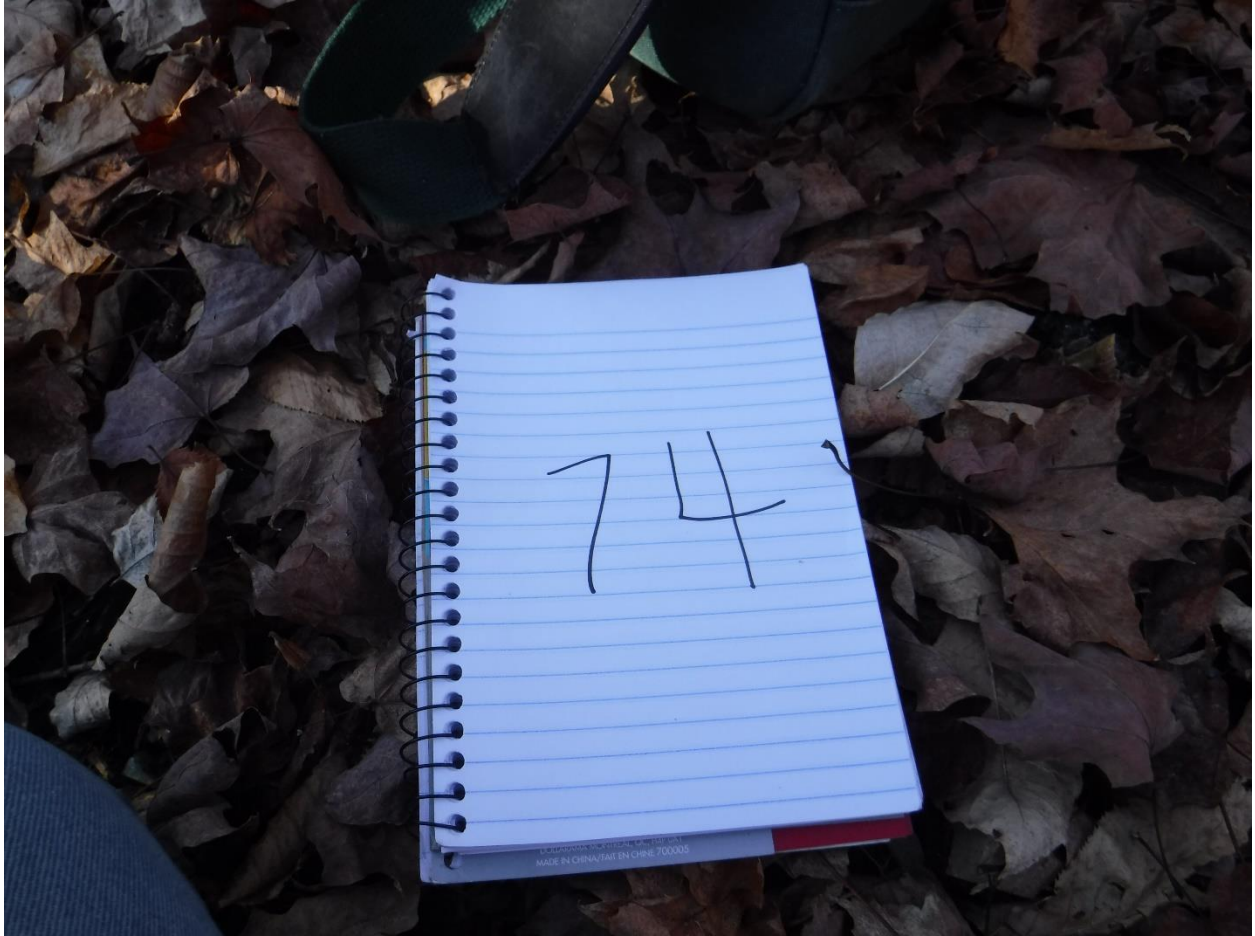
Site 73 (photo 1115)

Claim 582579



Site 73 (photo 1116)

Claim 582579



Site 74 (photo 1117)

Claim 582579



Site 74 (photo 1118)

Claim 582579

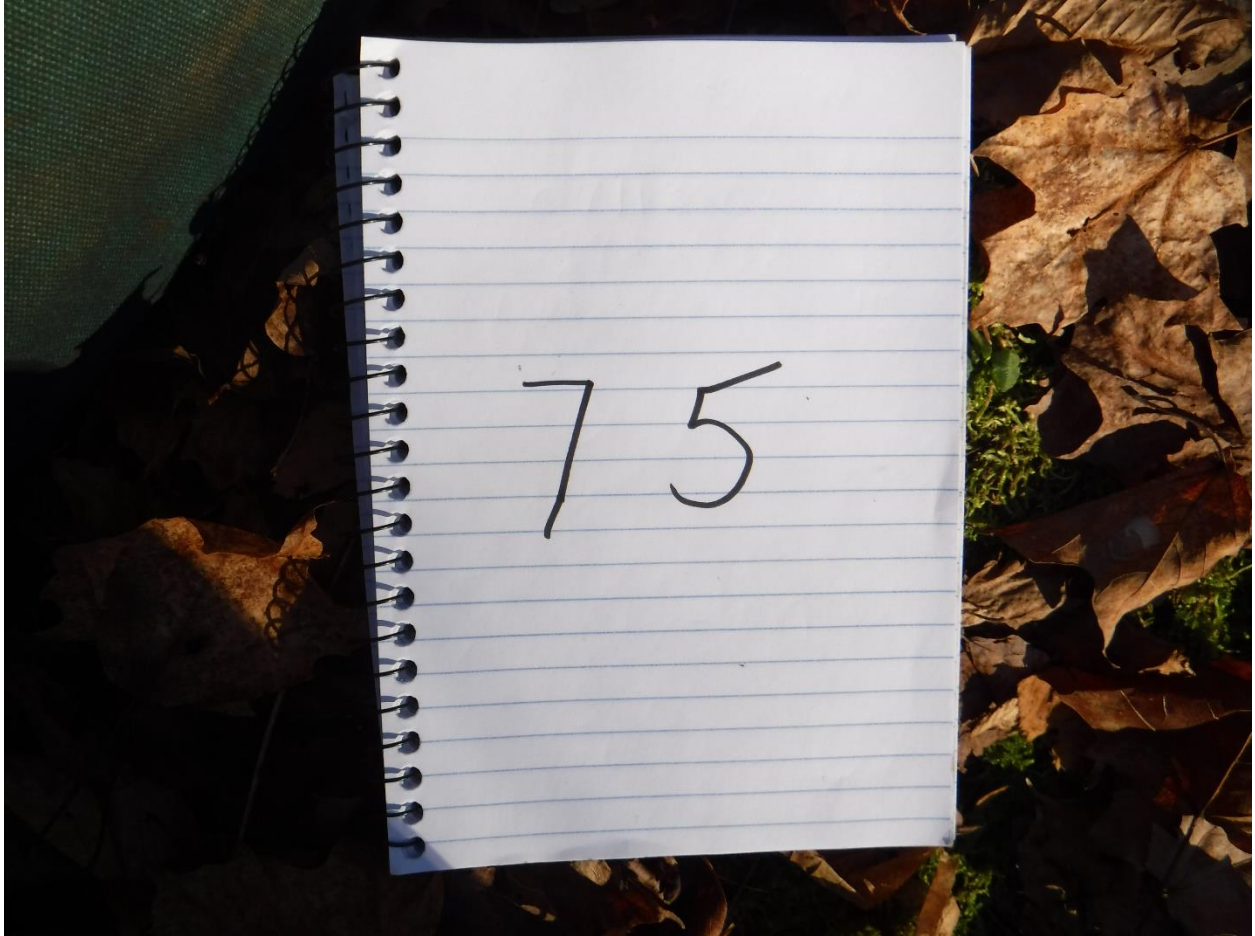


Site 74 (photo 1119)

Claim 582579



Site 74 (photo 1124)



Site 75 (photo 1126)

Claim 582579



Site 75 (photo 1128)



Claim 582579



Site 75 (photo 1129)

Claim 582579



Site 75 (photo 1130)

Claim 582579

Photos 2021.11.07

Sites 76, 77, 78 (19 photos)



Site 76 (photo 1131)

Claim 582579



Site 76 (photo 1132)

Claim 582579



Site 76 (photo 1133)



Site 76 (photo 6717)



Site 67 (photo 6718)



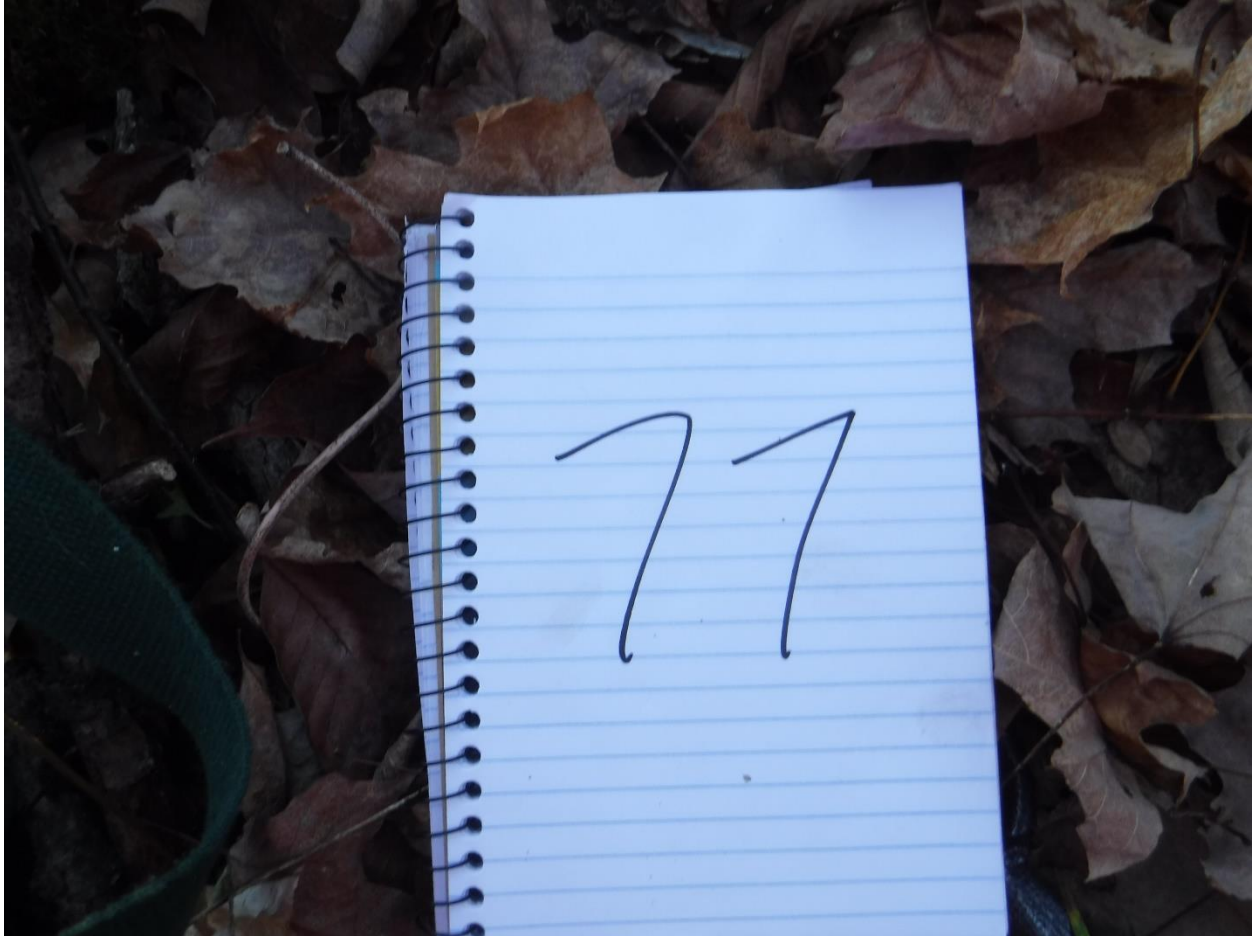
Father in a hole

Site 76 (photo 6722)





Site 76 (photo 6724)



Site 77 (photo 1134)

Claim 582579



Site 77 (photo 1135)

Claim 582579



Site 77 (photo 1136)

Claim 582579



Site 77 (photo 1137)

Claim 582579



Site 77 (photo 1138)

Claim 582579



Site 77 (photo 1139)

Claim 582579



Site 78 (photo 1140)



Claim 582579



Site 78 (photo 1141)

Claim 582579



Site 78 (photo 1142)

Claim 582579



Site 78 (photo 1143)

Claim 582579



Site 78 (photo 1145)

Claim 582579



Site 78 (photo 1149)