

We are committed to providing [accessible customer service](#).

If you need accessible formats or communications supports, please [contact us](#).

Nous tenons à améliorer [l'accessibilité des services à la clientèle](#).

Si vous avez besoin de formats accessibles ou d'aide à la communication, veuillez [nous contacter](#).

Assessment Report for Claims in Gould Twp.
Casson Twp. Haughton Twp.

Algoma District

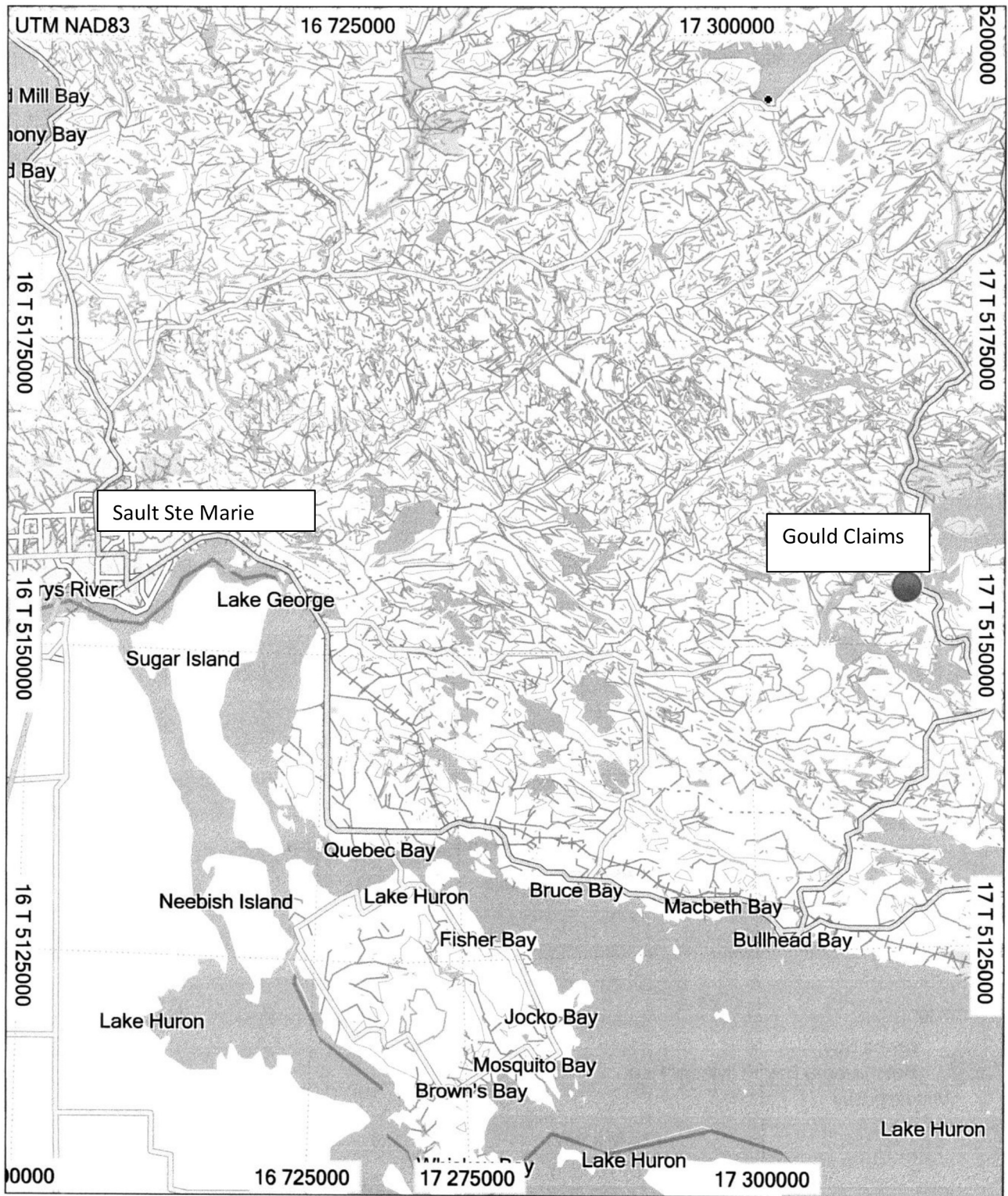
Prepared By

Clifford Hicks

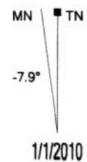
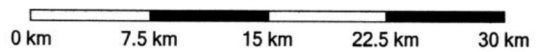
April 2022

INDEX

	Page
Regional location map	3
Claim Map.....	4
Claim Units.....	5
Work and milage.....	6
Lord Zone GPS Tracks.....	8
Gould Adit GPS Track.....	9
E12 GPS Track.....	10
Samples and Coordinates.....	11
Expense Summary.....	12
Assay Invoices and Reports.....	13



Topo Canada v4
 © Dmti Spatial Inc. 2008
 © Garmin Ltd. and Its Subsidiaries 2009



My Collection

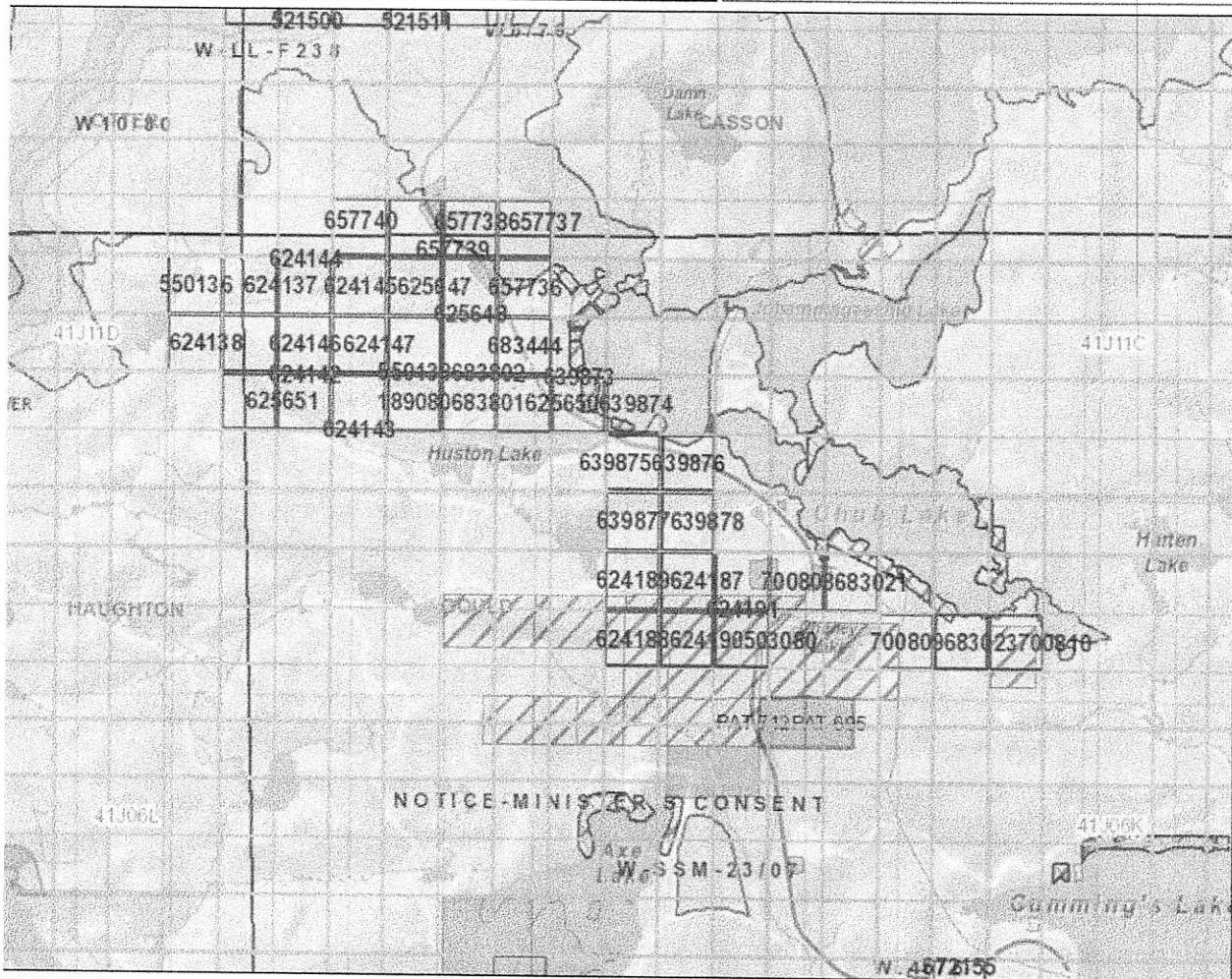
GARMIN.



Ministry of Northern Development, Mines,
Natural Resources and Forestry (NDMNRF)
MLAS Map Viewer

MLAS Map

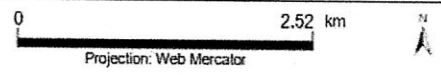
Notes:



Legend

- Provincial Grid Cell**
 - Available
 - Pending
 - Unavailable
- Mining Claim**
 - Mining Claim
 - Boundary Claim
- Alienation**
 - Withdrawal
 - Notice
- NDM Administrative Boundaries**
 - NDM Townships and Areas
 - Geographic Lot Fabric
 - UTM Grid 1K
 - UTM Grid 10K
 - Mining Division
 - Mineral Exploration and Development
 - CLUPA Protected Area - Federal
 - Resident Geologist District
 - Federal Land Other
 - Native Reserves
- AMIS Sites**
 - AMIS Sites
 - AMIS Features
 - Drill Hole
- Mineral Occurrences**
 - Mineral Occurrences
- MLAS Mining History**
 - Withdrawal - History
 - Notice - History
 - Mining Claim - History
 - Mining Land Tenure - History
 - Legacy Claim
- Provincial Grid**
 - Provincial Grid 250K
 - Provincial Grid 50K
 - Provincial Grid Group
- Land Tenure**
 - Surface Rights
 - Mining Rights
 - Mining and Surface Rights
 - Order-in-Council

Those wishing to register mining claims should consult with the Provincial Mining Recorders' Office of the Northern Development and Mines (NDM) for additional information on the status of the lands shown hereon. This map is not intended for navigational, survey, or land title determination purposes as the information shown on this map is compiled from various sources. Completeness and accuracy are not guaranteed. Additional information may also be obtained through the local Land Titles or Registry Office, or the Natural Resources and Forestry. The information shown is derived from digital data available in the Provincial Mining Recorders' Office at the time of downloading from the Northern Development and Mines (NDM) web site.



Imagery Copyright Notices: Ontario Ministry of Northern Development, Mines, Natural Resources and Forestry; NASA Landsat Program; First Base Solutions Inc.; Aéro-Photo (1961) Inc.; DigitalGlobe Inc.; U.S. Geological Survey.
© Queen's Printer for Ontario, 2022



Claim Unit Numbers

657740	657739	657738	657737	550136	624137	624145
625647	625648	657736	624138	624146	624147	550138
683802	683444	625651	624142	624143	189080	683801
625650	639873	639875	639876	639877	639878	624189
624187	624191	700808	683021	624148	624190	700809
683023	700810					

Work By Clifford Hicks

Month	Date	Work Type	Claim #	Mileage km
May	16	Prospecting	657738	289
	27	Prospecting	657739	288
	30	Prospecting	657740	281
June	13	Prospecting	624187	290
	15	Cleaned out old Trench	657739	302
July	1	Cleaned out old Trench	657739	298
	7	Prospecting	624190	295
	11	Cleaned out old Trench	657739	289
Aug	14	Cleaned out old Trench	657740	284
Sept	8	Prospecting	625648	290
	27	Prospecting	625648	296
	28	Prospecting	625647	298
Oct	18	Prospecting	624189	290
Nov	6	Prospecting	657738	290

Work by Jim Ralph

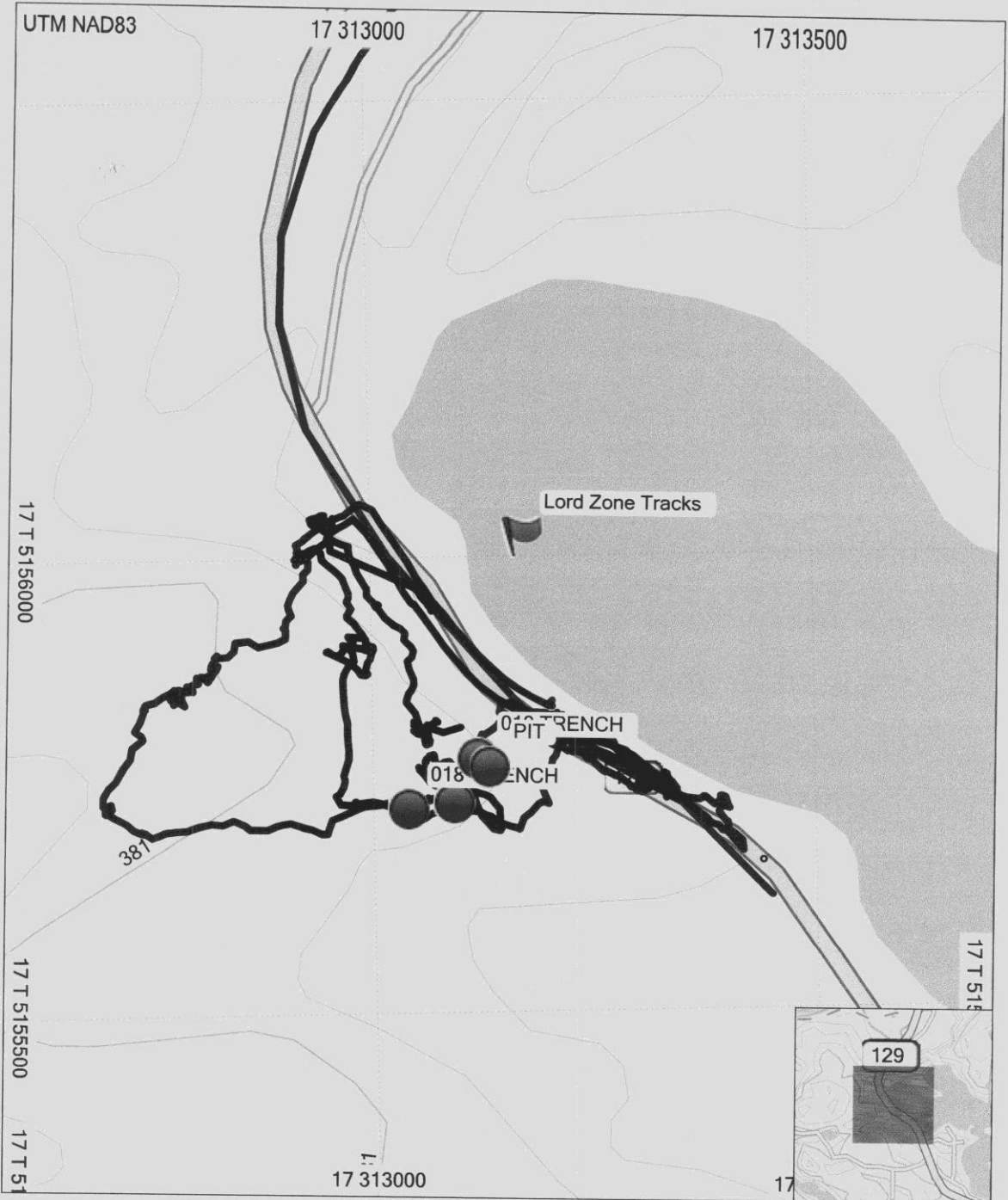
June	15	Prospecting	657739	
July	7	Prospecting	624190	300
	26	Prospecting	550136	300

Work by George Lucuik

June	15	Prospecting	657739
July	7	Prospecting	624190
Sept	26	Prospecting	550136

Total Days Worked 20

Total Milage 5271 km

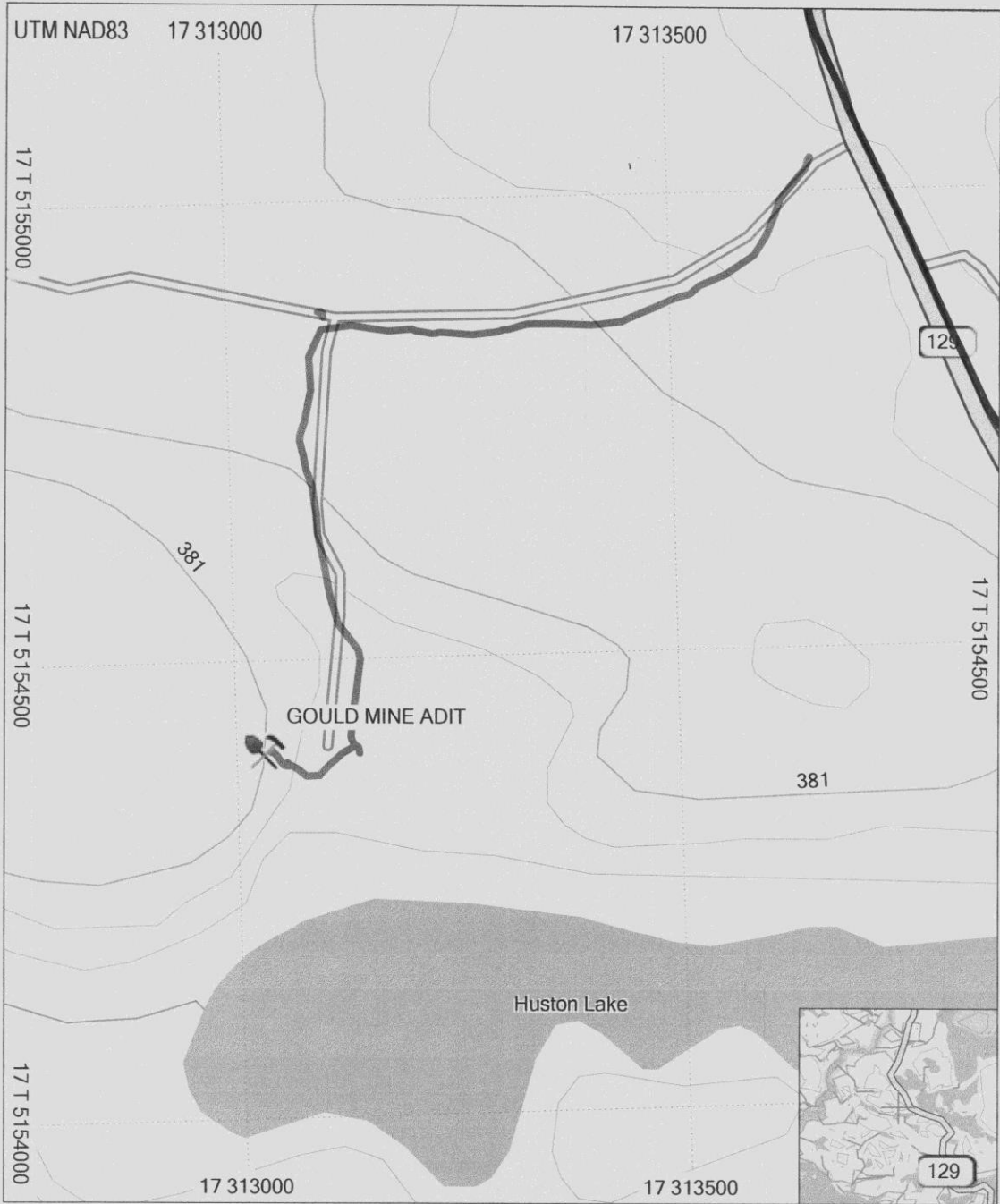


Topo Canada v4
 © Dmti Spatial Inc. 2008
 © Garmin Ltd. and its Subsidiaries 2009

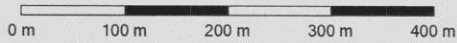
My Collection



GARMIN

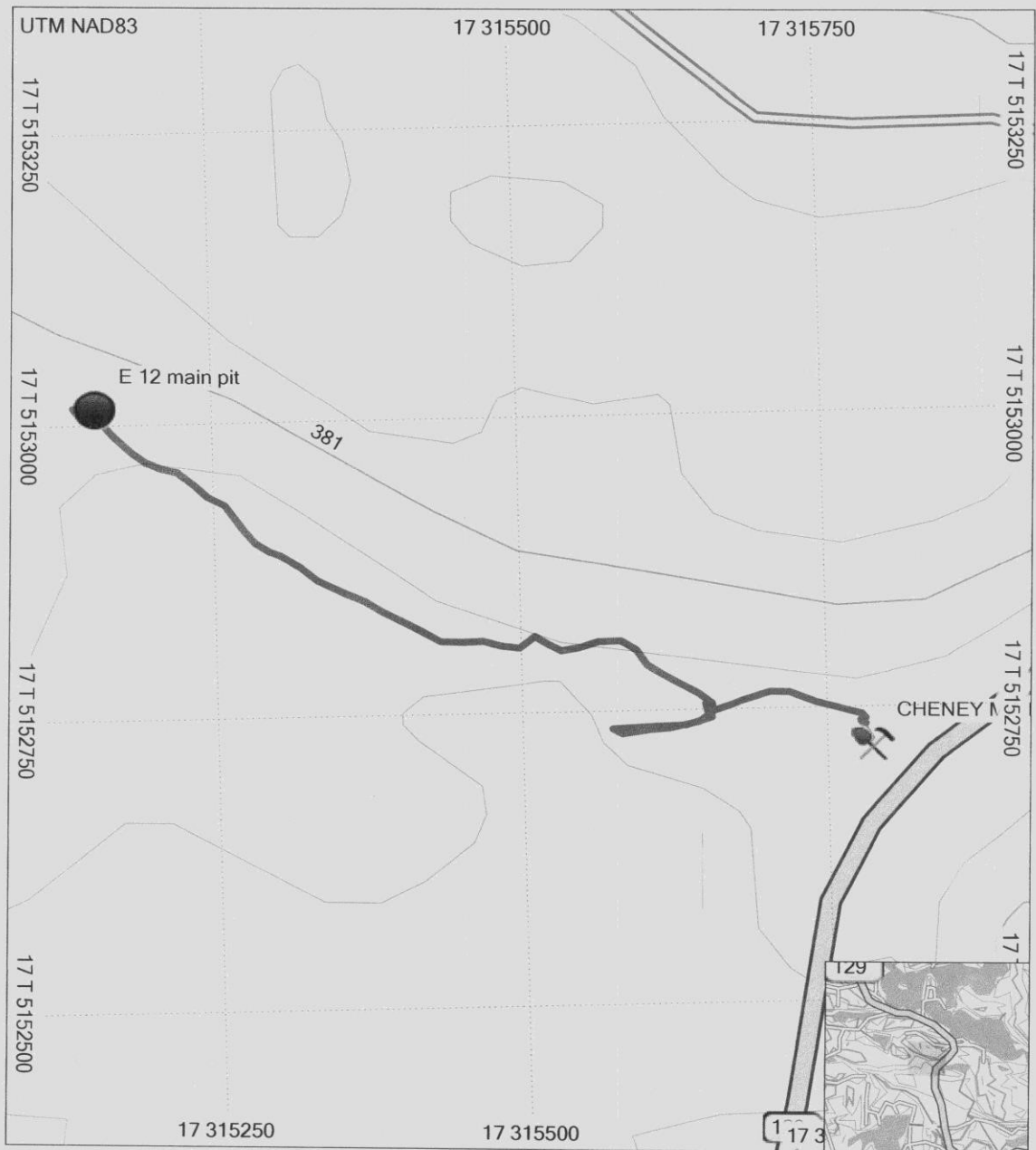


Topo Canada v4
 © Dmti Spatial Inc. 2008
 © Garmin Ltd. and its Subsidiaries 2009

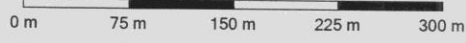


My Collection

GARMIN



Topo Canada v4
 © Dmti Spatial Inc. 2008
 © Garmin Ltd. and its Subsidiaries 2009



My Collection



SAMPLE LOCATION and DESCRIPTION

Sample #	UTM Coordinates			Sample type	Description
	Zone	Easting	Northing		
1	17	313369	5155712	Grab	Lord Zone main vein
2	17	313369	5155711	Grab	Lord Zone hanging wall
3	17	313369	5155713	Grab	Lord Zone foot wall
LZ-HEM and	17	313048	5155816	Grab	Lord Zone ankerite quartz
LZ Slate	17	313048	5155815	Grab	Lord Zone hanging wall
E of LZ	17	313133	5155769	Grab	fly rock from old pit
LZ-W	17	313037	5155769	Grab	fly rock from old pit
BM1	17	312777	5155847	Grab	argillite float
BM2	17	312819	5155869	Grab	argillite float
Iron	17	313017	5154410	Grab	quartz vein
Red Pit	17	311045	5155535	Grab	quartz vein
Near Red	17	311103	5155538	Grab	quartz vein
Red	17	311175	5155542	Grab	argillite wall rock
115	17	315138	5153013	Grab	quartz vein
112	17	315155	5153020	Grab	quartz vein
3A	17	315148	5153011	Grab	quartz vein
3B	17	315168	5153009	Grab	quartz vein

EXPENSE SUMMARY

Days worked 20 @ \$300.00 per day\$ 6000.00

Milage 5271 km @ .50 per km\$ 2355.50

Assaying June 11 2021\$ 114.41

June 21 2021\$ 154.58

Aug 13 2021\$ 386.46

TOTAL \$ 9010.95



GEORGE LUCUIK
30 CARLBERT ST
SAULT STE MARIE ON P6A 5S5
Canada

Report No.: A21-09411
Report Date: 11-Jun-21
Date Submitted: 25-May-21
Your Reference:

ATTN: GEORGE LUCUIK

CERTIFICATE OF ANALYSIS

3 Rock samples were submitted for analysis.

The following analytical package(s) were requested:		Testing Date:
UT-1-0.5g	QOP Ultratrace-1 (Aqua Regia ICPMS)	2021-06-08 14:05:55

REPORT **A21-09411**

This report may be reproduced without our consent. If only selected portions of the report are reproduced, permission must be obtained. If no instructions were given at time of sample submittal regarding excess material, it will be discarded within 90 days of this report. Our liability is limited solely to the analytical cost of these analyses. Test results are representative only of material submitted for analysis.

Notes:

Assays are recommended for values above the upper limit. The Au from AR-MS is for information purposes, for accurate Au fire assay 1A2 should be requested.



LabID: 266

CERTIFIED BY:

Emmanuel Esemé, Ph.D.
 Quality Control Coordinator

ACTIVATION LABORATORIES LTD.
 41 Bittern Street, Ancaster, Ontario, Canada, L9G 4V5
 TELEPHONE +905 648-9611 or +1.888.228.5227 FAX +1.905.648.9613
 E-MAIL Ancaster@actlabs.com ACTLABS GROUP WEBSITE www.actlabs.com

Results

Activation Laboratories Ltd.

Report: A21-09411

Analyte Symbol	Ti	S	P	Li	Be	B	Na	Mg	Al	K	Bi	Ca	Sc	V	Cr	Mn	Fe	Co	Ni	Cu	Zn	Ga	Ge
Unit Symbol	%	%	%	ppm	ppm	ppm	%	%	%	%	ppm	%	ppm	ppm	ppm	ppm	%	ppm	ppm	ppm	ppm	ppm	ppm
Lower Limit	0.001	1	0.001	0.1	0.1	1	0.001	0.01	0.01	0.01	0.02	0.01	0.1	1	1	1	0.01	0.1	0.1	0.2	0.1	0.02	0.1
Method Code	AR-MS	AR-MS	AR-MS	AR-MS	AR-MS	AR-MS	AR-MS	AR-MS	AR-MS	AR-MS	AR-MS	AR-MS	AR-MS	AR-MS	AR-MS	AR-MS	AR-MS	AR-MS	AR-MS	AR-MS	AR-MS	AR-MS	AR-MS
#1	0.002	<1	0.011	1.9	<0.1	5	0.028	0.02	0.24	0.03	0.31	0.04	1.4	21	6	55	0.77	3.2	4.6	> 10000	1.1	1.01	<0.1
#2	0.417	<1	0.038	23.7	<0.1	15	0.053	1.78	3.02	0.05	0.03	2.24	4.9	154	52	735	4.92	27.0	38.8	109	145	7.92	0.1
#3	0.440	<1	0.068	8.1	0.1	8	0.298	1.35	2.79	0.14	0.06	1.99	8.5	208	14	597	6.90	31.2	25.7	125	51.5	9.72	<0.1

Results

Activation Laboratories Ltd.

Report: A21-09411

Analyte Symbol	As	Rb	Sr	Y	Zr	Nb	Mo	Ag	In	Sn	Sb	Te	Cs	Ba	La	Ce	Cd	Pr	Nd	Sm	Se	Eu	Gd
Unit Symbol	ppm	ppm	ppm	ppm	ppm	ppm	ppm	ppm	ppm	ppm	ppm	ppm	ppm	ppm	ppm	ppm	ppm	ppm	ppm	ppm	ppm	ppm	ppm
Lower Limit	0.1	0.1	0.5	0.01	0.1	0.1	0.01	0.002	0.02	0.05	0.02	0.02	0.02	0.5	0.5	0.01	0.01	0.1	0.02	0.1	0.1	0.1	0.1
Method Code	AR-MS	AR-MS	AR-MS	AR-MS	AR-MS	AR-MS	AR-MS	AR-MS	AR-MS	AR-MS	AR-MS	AR-MS	AR-MS	AR-MS	AR-MS	AR-MS	AR-MS	AR-MS	AR-MS	AR-MS	AR-MS	AR-MS	AR-MS
#1	1.9	1.1	10.1	19.7	1.7	< 0.1	0.65	2.88	0.41	0.20	0.58	< 0.02	0.25	10.1	10.7	27.1	< 0.01	3.1	12.3	4.2	3.0	1.5	4.5
#2	19.9	14.4	75.9	752	5.3	0.2	0.24	0.145	< 0.02	0.24	0.57	0.03	0.27	58.9	2.9	7.61	0.63	1.0	4.42	1.1	< 0.1	0.3	1.5
#3	0.8	14.0	41.5	12.5	17.7	0.4	0.52	0.075	< 0.02	0.61	0.07	< 0.02	0.80	34.3	7.6	19.4	0.06	2.3	9.83	2.4	< 0.1	0.5	2.6

Results

Activation Laboratories Ltd.

Report: A21-09411

Analyte Symbol	To	Dy	Ho	Er	Tm	Yb	Lu	Hf	Ta	W	Re	Au	Tl	Pb	Th	U	Hg
Unit Symbol	ppm	ppm	ppm	ppm	ppm	ppm	ppm	ppm	ppm	ppm	ppm	ppb	ppm	ppm	ppm	ppm	ppb
Lower Limit	0.1	0.1	0.1	0.1	0.1	0.1	0.1	0.1	0.05	0.1	0.001	0.5	0.02	0.1	0.1	0.1	10
Method Code	ARM-S	ARM-S	ARM-S	ARM-S	ARM-S	ARM-S	ARM-S	ARM-S	ARM-S	ARM-S	ARM-S	ARM-S	ARM-S	ARM-S	ARM-S	ARM-S	ARM-S
#1	0.8	4.6	0.8	2.3	0.3	2.3	0.3	<0.1	<0.05	<0.1	<0.001	22.9	<0.02	1.7	0.4	1.5	280
#2	0.3	1.6	0.3	1.0	0.1	0.8	0.1	<0.1	<0.05	<0.1	<0.001	21.8	<0.02	46.9	0.8	0.1	70
#3	0.4	2.7	0.5	1.5	0.2	1.2	0.2	0.5	<0.05	0.2	<0.001	9.3	0.13	4.2	1.5	0.2	<10

Analyte Symbol	TI	S	P	LI	Be	B	Na	Mg	Al	K	BI	Ca	Sc	V	Cr	Mn	Fe	Co	Ni	Cu	Zn	Ga	Ge
Unit Symbol	%	%	%	ppm	ppm	ppm	%	%	%	%	ppm	%	ppm	ppm	ppm	ppm	%	ppm	ppm	ppm	ppm	ppm	ppm
Lower Limit	0.001	1	0.001	0.1	0.1	1	0.001	0.01	0.01	0.01	0.02	0.01	0.1	1	1	1	0.01	0.1	0.1	0.2	0.1	0.02	0.1
Method Code	AR-MS	AR-MS	AR-MS	AR-MS	AR-MS	AR-MS	AR-MS	AR-MS	AR-MS	AR-MS	AR-MS	AR-MS	AR-MS	AR-MS	AR-MS	AR-MS	AR-MS	AR-MS	AR-MS	AR-MS	AR-MS	AR-MS	AR-MS
OREAS 45d (Aqua Regia) Meas	< 1		0.036	16.5			0.032	0.17	5.31	0.11	0.25	0.10	37.8	180	448	388	12.9	25.7	183	336	38.2	16.7	
OREAS 45d (Aqua Regia) Cert		0.045	0.035	11.9			0.031	0.144	4.860	0.097	0.30	0.089	41.50	201.0	467	400.000	13.650	26.2	176.0	345.0	30.6	17.9	
OREAS 45d (Aqua Regia) Meas	< 1		0.034	16.7			0.034	0.15	5.66	0.11	0.27	0.09	40.8	185	466	415	14.0	27.9	190	370	37.6	17.0	
OREAS 45d (Aqua Regia) Cert		0.045	0.035	11.9			0.031	0.144	4.860	0.097	0.30	0.09	41.50	201.0	467	400.000	13.650	26.2	176.0	345.0	30.6	17.9	
OREAS 922 (AQUA REGIA) Meas	< 1		0.059	23.7			0.019	1.20	2.58	0.40	11.9	0.35	3.5	28	44	723	4.86	19.4	32.3	2190	250	6.67	
OREAS 922 (AQUA REGIA) Cert		0.386	0.063	22.8			0.021	1.33	2.72	0.376	10.3	0.324	3.15	29.4	40.7	730	5.05	19.4	34.3	2176	256	7.62	
OREAS 923 (AQUA REGIA) Meas	< 1		0.061	23.7				1.35	2.82	0.36	18.7	0.37	3.7	30	41	871	5.92	22.5	31.7	4740	348	7.63	
OREAS 923 (AQUA REGIA) Cert		0.684	0.061	23.4				1.43	2.80	0.322	21.8	0.326	3.09	30.6	39.4	850	5.91	22.2	32.7	4248	335	8.01	
OREAS 263 (Aqua Regia) Meas	< 1		0.038	21.3			0.068	0.53	1.75	0.33	0.58	0.87	3.2	23	48	442	3.36	30.5	60.8	78.9	119	3.26	
OREAS 263 (Aqua Regia) Cert		0.126	0.0410	20.1			0.0790	0.593	1.29	0.288	0.570	1.03	3.52	22.8	48.0	490	3.68	31.0	72.0	87.0	127	4.92	
OREAS 130 (Aqua Regia) Meas	0.032	6	0.084	29.9				0.94	1.09	0.51	3.04	1.70	3.4	36	26	1680	7.34	27.7	35.2	239	> 5000	4.96	
OREAS 130 (Aqua Regia) Cert		6.02	0.0860	29.9				0.892	1.10	0.500	3.05	1.81	3.42	33.1	23.2	1630	7.27	27.1	35.2	226	16900	4.78	
OREAS 623 (Aqua Regia) Meas	9		0.038	10.2			0.065	1.06	1.69	0.16	17.5	0.95	4.3	15	18	533	12.1	199	14.5	> 10000	> 5000	12.4	
OREAS 623 (Aqua Regia) Cert		8.75	0.0400	10.0			0.0680	1.11	1.80	0.175	16.9	1.09	4.63	15.8	19.4	570	13.0	216	15.6	17200	10100	11.9	
OREAS 623 (Aqua Regia) Meas	8		0.037	9.8			0.064	0.97	1.60	0.15	17.2	0.90	4.1	13	17	489	10.9	186	12.8	> 10000	> 5000	10.7	
OREAS 623 (Aqua Regia) Cert		8.75	0.0400	10.0			0.0680	1.11	1.80	0.175	16.9	1.09	4.63	15.8	19.4	570	13.0	216	15.6	17200	10100	11.9	
#3 Orig	0.444	< 1	0.067	8.1			0.297	1.34	2.79	0.14	0.06	2.03	8.5	208	14	599	6.88	31.1	25.1	125	51.6	9.89	
#3 Dup	0.436	< 1	0.068	8.0			0.299	1.36	2.79	0.14	0.06	1.95	8.6	208	14	594	6.93	31.3	26.3	126	51.4	9.74	
Method Blank	< 0.001	< 1	< 0.001	< 0.1			0.005	< 0.01	< 0.01	< 0.01	< 0.02	< 0.01	< 0.1	< 1	< 1	< 1	< 0.01	< 0.1	0.1	< 0.2	0.2	< 0.1	
Method Blank	< 0.001	< 1	0.002	0.1			0.006	< 0.01	< 0.01	< 0.01	< 0.02	< 0.01	< 0.1	< 1	< 1	< 1	< 0.01	< 0.1	0.1	< 0.2	1.1	0.07	
Method Blank	< 0.001	< 1	< 0.001	< 0.1			0.007	< 0.01	< 0.01	< 0.01	< 0.02	< 0.01	< 0.1	< 1	< 1	< 1	< 0.01	< 0.1	0.1	< 0.2	0.3	0.02	

Analyte Symbol	As	Hb	Sr	V	Zr	Nb	Mo	Ag	In	Sn	Sb	Te	Cs	Ba	La	Ce	Cd	Pr	Nd	Sm	Se	Eu	Gd
Unit Symbol	ppm	ppm	ppm	ppm	ppm	ppm	ppm	ppm	ppm	ppm	ppm	ppm	ppm	ppm	ppm	ppm	ppm	ppm	ppm	ppm	ppm	ppm	ppm
Lower Limit	0.1	0.1	0.5	0.07	0.1	0.1	0.01	0.002	0.02	0.05	0.02	0.02	0.02	0.5	0.5	0.01	0.01	0.1	0.02	0.1	0.1	0.1	0.1
Method Code	AR-MS	AR-MS	AR-MS	AR-MS	AR-MS	AR-MS	AR-MS	AR-MS	AR-MS	AR-MS	AR-MS	AR-MS	AR-MS	AR-MS	AR-MS	AR-MS	AR-MS	AR-MS	AR-MS	AR-MS	AR-MS	AR-MS	AR-MS
OREAS 45d (Aqua Regia) Meas	3.5	18.6	13.0	3.80					0.07	1.30				77.7	10.7	23.7							
OREAS 45d (Aqua Regia) Cert	6.50	20.9	11.0	5.08					0.085	1.950				80	9.960	24.8							
OREAS 45d (Aqua Regia) Meas	5.0	20.3	12.0	4.51					0.08	1.92				87.3	9.6	26.7							
OREAS 45d (Aqua Regia) Cert	6.50	20.9	11.0	5.08					0.085	1.950				80	9.960	24.8							
OREAS 922 (AQUA REGIA) Meas	6.0	21.6	14.4	17.9	9.7	0.4	0.79	0.811	0.23	4.14	0.72		1.78	76.0	30.4	72.0	0.25	7.6	29.3	5.2	2.4		
OREAS 922 (AQUA REGIA) Cert	6.12	22.7	15.0	16.0	22.3	0.35	0.69	0.851	0.24	3.83	0.57		1.76	70	32.5	63	0.28	7.33	27.5	4.98	3.44		4.44
OREAS 923 (AQUA REGIA) Meas	7.9	20.3	13.1	17.9	18.1		0.96	1.91	0.50	6.76	0.82		1.59	60.8	29.5	69.4	0.51	7.2	27.7	5.1	5.8		4.8
OREAS 923 (AQUA REGIA) Cert	7.07	19.6	13.6	14.3	22.5		0.84	1.82	0.45	5.99	0.58		1.56	54	30.0	60	0.40	6.79	25.4	4.34	5.99		4.07
OREAS 283 (Aqua Regia) Meas	27.7		14.4	11.0			0.53	0.288	0.03		8.24	0.21		174			0.24			3.6		0.8	3.9
OREAS 283 (Aqua Regia) Cert	30.8		16.9	12.0			0.570	0.285	0.0290		7.37	0.210		175			0.270			4.41		0.850	3.89
OREAS 130 (Aqua Regia) Meas	211	44.7	21.1	12.6	27.5		8.41	6.10	0.21		5.59	0.15	3.07		24.9	52.3	33.3	5.7					3.5
OREAS 130 (Aqua Regia) Cert	205	41.6	23.2	13.0	19.0		8.25	6.27	0.200		4.89	0.170	2.96		26.4	54.0	28.8	5.93					3.53
OREAS 623 (Aqua Regia) Meas	73.3		11.6	7.59	60.1		9.00	18.0	1.91	3.80	18.7	0.56	0.72		16.4	37.4	52.1				17.5		
OREAS 623 (Aqua Regia) Cert	76.0		14.2	7.43	50.0		8.38	20.4	1.94	4.07	20.2	0.570	0.750		17.9	36.4	52.0				18.6		
OREAS 623 (Aqua Regia) Meas	69.3		10.5	7.29	56.2		7.98	17.7	1.74	3.97	27.7	0.59	0.88		13.4	34.0	47.3				16.4		
OREAS 623 (Aqua Regia) Cert	76.0		14.2	7.43	50.0		8.38	20.4	1.94	4.07	20.2	0.570	0.750		17.9	36.4	52.0				18.6		
#3 Orig	0.7	14.1	41.5	12.5	18.4	0.4	0.51	0.071	<0.002	0.61	0.08	<0.02	0.81	34.5	7.6	19.5	0.07	2.3	9.76	2.3	<0.1	0.5	2.6
#3 Dup	0.9	13.9	41.4	12.6	17.1	0.5	0.53	0.079	<0.002	0.60	0.06	<0.02	0.79	34.0	7.5	19.4	0.05	2.3	9.90	2.6	<0.1	0.5	2.7
Method Blank	0.5	<0.1	<0.5	<0.01	<0.1	<0.1	0.02	<0.0002	<0.002	<0.05	<0.02	<0.02	<0.02	2.2	<0.5	<0.01	0.02	<0.1	<0.02	<0.1	0.1	<0.1	<0.1
Method Blank	<0.1	<0.1	<0.5	<0.01	<0.1	<0.1	<0.01	<0.0002	<0.002	<0.05	<0.02	<0.02	<0.02	2.1	<0.5	<0.01	<0.01	<0.1	<0.02	<0.1	0.6	<0.1	<0.1
Method Blank	<0.1	<0.1	<0.5	<0.01	<0.1	<0.1	0.06	<0.0002	<0.002	<0.05	<0.02	<0.02	<0.02	2.4	<0.5	<0.01	<0.01	<0.1	<0.02	<0.1	0.2	<0.1	<0.1

Analyte Symbol	Td	Dy	Ho	Er	Tm	Yo	Lu	Hr	Ta	W	Re	Au	Tl	Pb	Th	U	Hg
Unit Symbol	ppm	ppm	ppm	ppm	ppm	ppm	ppm	ppm	ppm	ppm	ppm	ppb	ppm	ppm	ppm	ppm	ppb
Lower Limit	0.1	0.1	0.1	0.1	0.1	0.1	0.1	0.1	0.05	0.1	0.001	0.5	0.02	0.1	0.1	0.1	10
Method Code	AR-MS	AR-MS	AR-MS	AR-MS	AR-MS	AR-MS	AR-MS	AR-MS	AR-MS	AR-MS	AR-MS	AR-MS	AR-MS	AR-MS	AR-MS	AR-MS	AR-MS
OREAS 450 (Aqua Regia) Mess												11.4			17.3	10.5	1.5
OREAS 450 (Aqua Regia) Cert												21			17.00	11.3	1.64
OREAS 450 (Aqua Regia) Mess												15.5			18.0	11.6	1.6
OREAS 450 (Aqua Regia) Cert												21			17.00	11.3	1.64
OREAS 922 (AQUA REGIA) Mess												1.3			63.4	16.1	2.3
OREAS 922 (AQUA REGIA) Cert												1.3			63.4	16.1	2.3
OREAS 923 (AQUA REGIA) Mess												1.12			60	14.5	1.98
OREAS 923 (AQUA REGIA) Cert												1.12			60	14.5	1.98
OREAS 923 (AQUA REGIA) Mess												2.1			82.9	15.5	2.2
OREAS 923 (AQUA REGIA) Cert												2.1			82.9	15.5	2.2
OREAS 263 (Aqua Regia) Mess												1.96			81	14.3	1.80
OREAS 263 (Aqua Regia) Cert												1.96			81	14.3	1.80
OREAS 263 (Aqua Regia) Mess												0.53			34.7	11.4	1.3
OREAS 263 (Aqua Regia) Cert												0.53			34.7	11.4	1.3
OREAS 263 (Aqua Regia) Mess												0.590			34.0	10.5	1.28
OREAS 263 (Aqua Regia) Cert												0.590			34.0	10.5	1.28
OREAS 130 (Aqua Regia) Mess												1.5			4.15	1370	10.0
OREAS 130 (Aqua Regia) Cert												1.5			4.15	1370	10.0
OREAS 130 (Aqua Regia) Mess												0.8			5.92	1300	10.3
OREAS 130 (Aqua Regia) Cert												0.8			5.92	1300	10.3
OREAS 623 (Aqua Regia) Mess												2.7			2440	4.9	1.7
OREAS 623 (Aqua Regia) Cert												2.7			2440	4.9	1.7
OREAS 623 (Aqua Regia) Mess												2.82			2520	4.72	1.43
OREAS 623 (Aqua Regia) Cert												2.82			2520	4.72	1.43
OREAS 623 (Aqua Regia) Mess												2.9			2450	4.8	1.6
OREAS 623 (Aqua Regia) Cert												2.9			2450	4.8	1.6
OREAS 523 (Aqua Regia) Mess												2.62			2590	4.72	1.43
OREAS 523 (Aqua Regia) Cert												2.62			2590	4.72	1.43
#3 Olig	0.4	2.6	0.5	1.5	0.2	1.2	0.2	0.5	<0.05	0.2	<0.001	12.6	0.13	4.2	1.5	0.2	20
#3 Dup	0.4	2.7	0.5	1.5	0.2	1.2	0.2	0.5	<0.05	0.2	<0.001	6.0	0.13	4.1	1.5	0.2	<10
Method Blank	<0.1	<0.1	<0.1	<0.1	<0.1	<0.1	<0.1	<0.1	<0.05	<0.1	<0.001	0.5	<0.002	<0.1	<0.1	<0.1	30
Method Blank	<0.1	<0.1	<0.1	<0.1	<0.1	<0.1	<0.1	<0.1	<0.05	<0.1	<0.001	0.8	<0.002	<0.1	<0.1	<0.1	<10
Method Blank	<0.1	<0.1	<0.1	<0.1	<0.1	<0.1	<0.1	<0.1	<0.05	<0.1	<0.001	0.8	<0.002	<0.1	<0.1	<0.1	<10
Method Blank	<0.1	<0.1	<0.1	<0.1	<0.1	<0.1	<0.1	<0.1	<0.05	<0.1	<0.001	0.8	<0.002	<0.1	<0.1	<0.1	<10

Quality Analysis ...



Innovative Technologies

Report No.: A21-10112

Report Date: 21-Jun-21

Date Submitted: 03-Jun-21

Your Reference:

GEORGE LUCUIK
30 CARLBERT ST
SAULT STE MARIE ON P6A 5S5
Canada

ATTN: GEORGE LUCUIK

CERTIFICATE OF ANALYSIS

4 Rock samples were submitted for analysis.

The following analytical package(s) were requested:		Testing Date:
UT-1-0.5g	QOP Ultratrace-1 (Aqua Regia ICPMS)	2021-06-17 14:20:17

REPORT A21-10112

This report may be reproduced without our consent. If only selected portions of the report are reproduced, permission must be obtained. If no instructions were given at time of sample submittal regarding excess material, it will be discarded within 90 days of this report. Our liability is limited solely to the analytical cost of these analyses. Test results are representative only of material submitted for analysis.

Notes:

Assays are recommended for values above the upper limit. The Au from AR-MS is for information purposes, for accurate Au fire assay 1A2 should be requested.



LabID: 266

ACTIVATION LABORATORIES LTD.

41 Bittern Street, Ancaster, Ontario, Canada, L9G 4V5
TELEPHONE +905 648-9611 or +1.888.228.5227 FAX +1.905.648.9613
E-MAIL Ancaster@actlabs.com ACTLABS GROUP WEBSITE www.actlabs.com

CERTIFIED BY:

Emmanuel Esemé, Ph.D.
Quality Control Coordinator

Analyte Symbol	TI	S	P	L	Be	B	Na	Mg	Al	K	Bi	Ca	Sc	V	Cr	Mn	Fe	Co	Ni	Cu	Zn	Ga	Ge
Unit Symbol	%	%	%	ppm	ppm	ppm	%	%	%	%	ppm	%	ppm	ppm	ppm	ppm	%	ppm	ppm	ppm	ppm	ppm	ppm
Lower Limit	0.001	1	0.001	0.1	0.1	1	0.001	0.01	0.01	0.01	0.02	0.01	0.1	1	1	1	0.01	0.1	0.1	0.1	0.1	0.02	0.1
Method Code	AR-MS	AR-MS	AR-MS	AR-MS	AR-MS	AR-MS	AR-MS	AR-MS	AR-MS	AR-MS	AR-MS	AR-MS	AR-MS	AR-MS	AR-MS	AR-MS	AR-MS	AR-MS	AR-MS	AR-MS	AR-MS	AR-MS	AR-MS
LZ-HEM	0.019	< 1	0.072	25.2	0.8	18	0.035	1.32	2.03	0.33	0.99	0.18	3.5	37	70	633	5.95	35.8	74.1	804	50.7	5.94	< 0.1
LZ-SLATE	0.009	< 1	0.072	8.4	0.7	13	0.011	0.11	1.63	0.28	1.22	0.15	2.3	22	32	33	1.47	11.2	22.3	1660	8.1	1.58	< 0.1
E OF LZ	0.005	< 1	0.009	15.2	< 0.1	6	0.023	0.93	1.05	0.02	0.15	0.04	7.8	47	15	280	3.50	3.7	7.7	7000	20.5	1.46	< 0.1
LZ-W	0.010	< 1	0.049	18.4	0.4	5	0.059	0.97	1.48	0.20	0.32	0.13	2.7	39	63	447	4.17	19.7	43.1	181	26.9	7.40	< 0.1

Analyte Symbol	As	Rb	Sr	Y	Zr	Nb	Mo	Ag	In	Sn	Sb	Te	Cs	Ba	La	Ce	Cd	Pr	Nd	Sm	Se	Eu	Gd
Unit Symbol	ppm	ppm	ppm	ppm	ppm	ppm	ppm	ppm	ppm	ppm	ppm	ppm	ppm	ppm	ppm	ppm	ppm	ppm	ppm	ppm	ppm	ppm	ppm
Lower Limit	0.1	0.1	0.5	0.01	0.1	0.1	0.01	0.002	0.02	0.05	0.02	0.02	0.02	0.5	0.5	0.01	0.01	0.1	0.02	0.1	0.1	0.1	0.1
Method Code	AR-MS	AR-MS	AR-MS	AR-MS	AR-MS	AR-MS	AR-MS	AR-MS	AR-MS	AR-MS	AR-MS	AR-MS	AR-MS	AR-MS	AR-MS	AR-MS	AR-MS	AR-MS	AR-MS	AR-MS	AR-MS	AR-MS	AR-MS
LZ-HEM	9.1	15.4	10.4	6.10	2.6	< 0.1	1.04	0.120	0.05	0.27	0.46	< 0.02	1.46	125	24.4	57.2	< 0.01	5.7	22.7	3.7	0.2	1.2	2.8
LZ-SLATE	4.6	12.6	11.1	5.22	0.6	< 0.1	0.66	0.341	< 0.02	0.19	0.26	0.05	0.69	192	16.1	36.7	< 0.01	3.7	15.0	2.5	0.1	0.8	2.3
E OF LZ	6.9	1.0	8.3	2.74	4.4	< 0.1	0.26	1.32	0.07	0.19	0.38	< 0.02	0.36	138	10.7	25.3	< 0.01	2.6	10.5	2.6	0.7	0.8	1.8
LZ-W	3.7	10.8	9.3	5.87	3.5	< 0.1	0.99	0.052	< 0.02	0.21	0.23	0.03	0.44	49.2	22.5	50.9	< 0.01	4.9	19.1	3.2	0.3	0.8	2.2

Analyte Symbol	Tb	Dy	Ho	Er	Tm	Yb	Lu	Hf	Ta	W	Re	Au	Tl	Pb	Th	U	Hg
Unit Symbol	ppm	ppm	ppm	ppm	ppm	ppm	ppm	ppm	ppm	ppm	ppm	ppb	ppm	ppm	ppm	ppm	ppb
Lower Limit	0.1	0.1	0.1	0.1	0.1	0.1	0.1	0.1	0.05	0.1	0.001	0.5	0.02	0.1	0.1	0.1	10
Method Code	AR-MS	AR-MS	AR-MS	AR-MS	AR-MS	AR-MS	AR-MS	AR-MS	AR-MS	AR-MS	AR-MS	AR-MS	AR-MS	AR-MS	AR-MS	AR-MS	AR-MS
LZ-HEM	0.3	1.6	0.2	0.8	< 0.1	0.5	< 0.1	< 0.1	< 0.05	0.3	< 0.001	5.4	0.09	2.6	5.8	1.7	110
LZ-SLATE	0.2	1.4	0.2	0.6	< 0.1	0.5	< 0.1	< 0.1	< 0.05	< 0.1	< 0.001	4.1	0.08	1.4	5.0	1.0	120
E OF LZ	0.1	0.7	< 0.1	0.3	< 0.1	0.2	< 0.1	< 0.1	< 0.05	0.2	< 0.001	8.2	< 0.02	2.3	1.5	1.9	160
LZ-W	0.2	1.3	0.2	0.7	< 0.1	0.6	< 0.1	< 0.1	< 0.05	< 0.1	< 0.001	3.6	0.07	1.9	5.2	1.4	90

Analyte Symbol	TI	S	P	Li	Be	B	Na	Mg	Al	K	Bi	Ca	Sc	V	Cr	Mn	Fe	Co	Ni	Cu	Zn	Ga	Ge
Unit Symbol	%	%	%	ppm	ppm	ppm	%	%	%	%	ppm	%	ppm	ppm	ppm	ppm	%	ppm	ppm	ppm	ppm	ppm	ppm
Lower Limit	0.001	1	0.001	0.1	0.1	1	0.001	0.01	0.01	0.01	0.02	0.01	0.1	1	1	1	0.01	0.1	0.1	0.2	0.1	0.02	0.1
Method Code	AR-MS	AR-MS	AR-MS	AR-MS	AR-MS	AR-MS	AR-MS	AR-MS	AR-MS	AR-MS	AR-MS	AR-MS	AR-MS	AR-MS	AR-MS	AR-MS	AR-MS	AR-MS	AR-MS	AR-MS	AR-MS	AR-MS	AR-MS
OREAS 45d (Aqua Regia) Meas		< 1	0.036	14.5			0.035	0.17	5.42	0.10	0.27	0.09	39.1	164	425	425	14.2	29.1	201	380	38.4	17.1	
OREAS 45d (Aqua Regia) Cert		0.045	0.035	11.9			0.031	0.144	4.860	0.097	0.30	0.09	41.50	201.0	467	400.000	13.650	26.2	176.0	345.0	30.6	17.9	
OREAS 45d (Aqua Regia) Meas		< 1	0.035	15.8			0.035	0.16	5.23	0.11	0.27	0.10	40.3	158	411	390	13.5	27.4	193	359	36.1	16.3	
OREAS 45d (Aqua Regia) Cert		0.045	0.035	11.9			0.031	0.144	4.860	0.097	0.30	0.09	41.50	201.0	467	400.000	13.650	26.2	176.0	345.0	30.6	17.9	
OREAS 45d (Aqua Regia) Meas		< 1	0.032	15.3			0.034	0.16	4.75	0.09	0.25	0.10	38.9	180	436	394	13.7	25.0	187	326	23.9	15.8	
OREAS 922 (AQUA REGIA) Meas		0.045	0.035	11.9			0.031	0.144	4.860	0.097	0.30	0.09	41.50	201.0	467	400.000	13.650	26.2	176.0	345.0	30.6	17.9	
OREAS 922 (AQUA REGIA) Cert		0.021	0.020	4.4			0.086	0.22	1.13	0.30	22.5	0.25	1.9	5	7	321	8.08	45.9	4.6	6150	148	13.5	
OREAS 907 (Aqua Regia) Meas		0.0170	0.0240	4.05	0.870		0.0860	0.221	0.945	0.286	22.3	0.280	2.16	5.12	8.59	330	8.18	43.7	4.74	6370	139	14.7	
OREAS 263 (Aqua Regia) Meas		< 1	0.043	19.7	1.2		0.077	0.62	1.68	0.31	0.55	0.96	3.5	26	53	482	3.65	32.1	69.2	83.6	130	3.92	
OREAS 263 (Aqua Regia) Cert		0.126	0.0410	20.1	1.22		0.0790	0.593	1.29	0.288	0.570	1.03	3.52	22.8	48.0	490	3.68	31.0	72.0	87.0	127	4.92	
OREAS 130 (Aqua Regia) Meas		0.030	0.093	28.4				0.88	1.10	0.49	3.38	1.66	3.5	34	28	1690	7.27	29.7	36.5	251	> 5000	5.04	
OREAS 130 (Aqua Regia) Cert		0.0270	0.0860	29.9				0.892	1.10	0.500	3.05	1.81	3.42	33.1	23.2	1630	7.27	27.1	35.2	226	16900	4.78	
OREAS 130 (Aqua Regia) Meas		0.029	0.078	27.9				0.80	0.97	0.46	3.25	1.58	3.1	33	23	1530	6.90	27.0	32.1	234	> 5000	4.69	
OREAS 130 (Aqua Regia) Cert		0.0270	0.0860	29.9				0.892	1.10	0.500	3.05	1.81	3.42	33.1	23.2	1630	7.27	27.1	35.2	226	16900	4.78	
OREAS 153b (Aqua Regia) Meas		0.055	0.050	3.5	0.1		0.162	1.45	2.25	0.33	1.74	1.30	9.7	143	15	285	3.63	16.2	10.8	6530	126	7.80	
OREAS 153b (Aqua Regia) Cert		0.0500	0.0470	3.28	0.180		0.148	1.47	2.28	0.365	1.81	1.32	9.98	153	16.2	240	3.60	14.9	11.1	6700	118	8.06	
OREAS 623 (Aqua Regia) Meas		8	0.043	8.9	0.3		0.071	1.07	1.66	0.17	18.5	1.04	4.4	15	22	571	12.9	226	16.8	> 10000	> 5000	12.9	
OREAS 623 (Aqua Regia) Cert		8.75	0.0400	10.0	0.370		0.0680	1.11	1.80	0.175	16.9	1.09	4.63	15.8	19.4	570	13.0	216	15.6	17200	10100	11.9	
E OF LZ Orig		0.006	< 1	0.009	15.1	0.2	0.024	0.93	1.04	0.02	0.15	0.04	7.7	47	15	278	3.46	3.7	7.6	6930	19.8	1.42	< 0.1
E OF LZ Dup		0.005	< 1	0.009	15.4	< 0.1	0.023	0.94	1.05	0.02	0.15	0.04	7.9	48	15	282	3.54	3.7	7.8	7080	21.2	1.50	< 0.1
Method Blank		< 0.001	< 0.001	< 0.1	< 0.1	< 0.1	0.008	< 0.01	< 0.01	< 0.01	< 0.02	< 0.01	< 0.1	< 1	< 1	< 1	< 0.01	< 0.1	< 0.1	< 0.2	0.3	0.04	< 0.1
Method Blank		< 0.001	< 1	< 0.001	< 0.1	< 0.1	0.008	< 0.01	< 0.01	< 0.01	< 0.02	< 0.01	< 0.1	< 1	< 1	< 1	< 0.01	< 0.1	1.0	0.4	0.3	0.12	< 0.1

Analyte Symbol	Ti	S	P	Li	Be	B	Na	Mg	Al	K	Bi	Ca	Sc	V	Cr	Mn	Fe	Co	Ni	Cu	Zn	Ga	Ge
Unit Symbol	%	%	%	ppm	ppm	ppm	%	%	%	%	ppm	%	ppm	ppm	ppm	ppm	%	ppm	ppm	ppm	ppm	ppm	ppm
Lower Limit	0.001	1	0.001	0.1	0.1	1	0.001	0.01	0.01	0.01	0.02	0.01	0.1	1	1	1	0.01	0.1	0.1	0.2	0.1	0.02	0.1
Method Code	AR-MS	AR-MS	AR-MS	AR-MS	AR-MS	AR-MS	AR-MS	AR-MS	AR-MS	AR-MS	AR-MS	AR-MS	AR-MS	AR-MS	AR-MS	AR-MS	AR-MS	AR-MS	AR-MS	AR-MS	AR-MS	AR-MS	AR-MS
Method Blank	< 0.001	< 1	< 0.001	< 0.1	< 0.1	< 0.1	0.006	< 0.01	< 0.01	< 0.01	< 0.02	< 0.01	0.1	< 1	< 1	< 1	< 0.01	< 0.1	< 0.1	< 0.2	< 0.1	0.08	< 0.1

Analyte Symbol	As	Rb	Sr	Y	Zr	Nb	Mo	Ag	In	Sn	Sb	Te	Cs	Ba	La	Ce	Cd	Pr	Nd	Sm	Se	Eu	Gd
Unit Symbol	ppm	ppm	ppm	ppm	ppm	ppm	ppm	ppm	ppm	ppm	ppm	ppm	ppm	ppm	ppm	ppm	ppm	ppm	ppm	ppm	ppm	ppm	ppm
Lower Limit	0.1	0.1	0.5	0.01	0.1	0.1	0.01	0.002	0.02	0.05	0.02	0.02	0.02	0.5	0.5	0.01	0.01	0.1	0.02	0.1	0.1	0.1	
Method Code	AR-MS	AR-MS	AR-MS	AR-MS	AR-MS	AR-MS	AR-MS	AR-MS	AR-MS	AR-MS	AR-MS	AR-MS	AR-MS	AR-MS	AR-MS	AR-MS	AR-MS	AR-MS	AR-MS	AR-MS	AR-MS	AR-MS	AR-MS
OREAS 45d (Aqua Regia) Meas	4.4	20.5	11.9	4.19					0.08	1.77				75.2	9.8	24.7							
OREAS 45d (Aqua Regia) Cert	6.50	20.9	11.0	5.08					0.085	1.950				80	9.960	24.8							
OREAS 45d (Aqua Regia) Meas	5.8	20.2	12.0	4.21					0.09	1.66				75.3	10.4	26.1							
OREAS 45d (Aqua Regia) Cert	6.50	20.9	11.0	5.08					0.085	1.950				80	9.960	24.8							
OREAS 45d (Aqua Regia) Meas	7.2	18.2	11.9	4.14					0.07	1.86				73.6	9.6	23.4							
OREAS 45d (Aqua Regia) Cert	6.50	20.9	11.0	5.08					0.085	1.950				80	9.960	24.8							
OREAS 922 (AQUA REGIA) Meas	6.12	22.7	15.0	16.0	22.3	0.35	0.69	0.851	0.24	3.83	0.57		1.76	70	32.5	63	0.28	7.33	27.5	4.98	3.44		4.44
OREAS 907 (Aqua Regia) Meas	36.8	18.1	12.0	6.48	7.7		4.91	1.20	2.23	2.52	1.88	0.19	1.28	214	34.9	73.6	0.47	7.1	26.5	4.7	8.9		3.6
OREAS 907 (Aqua Regia) Cert	37.0	16.7	11.7	6.52	43.7		5.64	1.30	2.35	2.34	2.28	0.230	1.17	225	36.1	73.0	0.540	7.36	27.8	4.79	9.05		3.45
OREAS 263 (Aqua Regia) Meas	29.5		17.2	11.0			0.53	0.301	0.03		8.86	0.15		174			0.17			4.4			3.7
OREAS 263 (Aqua Regia) Cert	30.8		16.9	12.0			0.570	0.285	0.0290		7.37	0.210		175			0.270			4.41			3.89
OREAS 130 (Aqua Regia) Meas	212	43.1	18.4	12.2	27.2		7.89	5.95	0.19		4.89	0.25	3.01		22.6	52.6	28.9	5.5					3.3
OREAS 130 (Aqua Regia) Cert	205	41.6	23.2	13.0	19.0		8.25	6.27	0.200		4.69	0.170	2.96		26.4	54.0	28.8	5.93					3.53
OREAS 130 (Aqua Regia) Meas	217	42.5	18.0	11.9	25.4		7.39	6.13	0.18		4.99	0.25	3.02		22.0	50.8	27.9	5.1					3.3
OREAS 130 (Aqua Regia) Cert	205	41.6	23.2	13.0	19.0		8.25	6.27	0.200		4.69	0.170	2.96		26.4	54.0	28.8	5.93					3.53
OREAS 130 (Aqua Regia) Meas	196	37.3	17.4	11.9	27.1		7.30	6.03	0.19		5.32	0.17	2.78		20.2	48.1	28.5	5.1					3.6
OREAS 130 (Aqua Regia) Cert	205	41.6	23.2	13.0	19.0		8.25	6.27	0.200		4.69	0.170	2.96		26.4	54.0	28.8	5.93					3.53
OREAS 153b (Aqua Regia) Meas	81.2	6.6	33.8	8.40	0.8		150	1.39	0.22		2.26	0.21	0.18	24.3	3.7	9.71	0.30		6.08	1.8	11.5		
OREAS 153b (Aqua Regia) Cert	80.0	7.34	31.4	9.38	0.860		156	1.40	0.210		2.12	0.250	0.260	22.8	3.79	9.11	0.240		6.31	1.71	10.5		
OREAS 623 (Aqua Regia) Meas	81.6		12.5	8.04	62.5		9.10	19.0	1.98		19.6	0.56	0.83		17.6	39.8	52.1						
OREAS 623 (Aqua Regia) Cert	76.0		14.2	7.43	50.0		8.38	20.4	1.94		20.2	0.570	0.750		17.9	36.4	52.0						
E OF LZ Orig	7.2	1.0	8.2	2.74	4.1	<0.1	0.25	1.31	0.07	0.16	0.38	0.02	0.35	138	10.7	24.9	<0.01	2.5	10.6	2.2	0.8		1.7
E OF LZ Dup	6.5	1.0	8.4	2.73	4.7	<0.1	0.26	1.32	0.06	0.21	0.39	<0.02	0.38	139	10.8	25.7	<0.01	2.7	10.5	3.0	0.7		1.8
Method Blank	0.2	<0.1	<0.5	<0.01	<0.1	<0.1	<0.01	<0.002	<0.02	0.07	0.04	<0.02	<0.02	3.1	<0.5	<0.01	<0.01	<0.1	<0.02	<0.1	0.3		<0.1
Method Blank	1.0	<0.1	<0.5	<0.01	0.1	<0.1	0.05	0.005	<0.02	<0.05	<0.02	0.02	<0.02	4.8	<0.5	0.05	<0.01	<0.1	<0.02	<0.1	0.7		<0.1

Analyte Symbol	As	Rb	Sr	Y	Zr	Nb	Mo	Ag	In	Sn	Sb	Te	Cs	Ba	La	Ce	Cd	Pr	Nd	Sm	Se	Eu	Gd
Unit Symbol	ppm	ppm	ppm	ppm	ppm	ppm	ppm	ppm	ppm	ppm	ppm	ppm	ppm	ppm	ppm	ppm	ppm	ppm	ppm	ppm	ppm	ppm	ppm
Lower Limit	0.1	0.1	0.5	0.01	0.1	0.1	0.01	0.002	0.02	0.05	0.02	0.02	0.02	0.5	0.5	0.01	0.01	0.1	0.02	0.1	0.1	0.1	0.1
Method Code	AR-MS	AR-MS	AR-MS	AR-MS	AR-MS	AR-MS	AR-MS	AR-MS	AR-MS	AR-MS	AR-MS	AR-MS	AR-MS	AR-MS	AR-MS	AR-MS	AR-MS	AR-MS	AR-MS	AR-MS	AR-MS	AR-MS	AR-MS
Method Blank	0.3	< 0.1	< 0.5	< 0.01	0.2	< 0.1	0.01	0.004	< 0.02	< 0.05	0.02	< 0.02	< 0.02	2.4	< 0.5	< 0.01	< 0.01	< 0.1	< 0.02	< 0.1	0.4	< 0.1	< 0.1

Analyte/Symbol	Tb	Dy	Ho	Er	Tm	Yb	Lu	Hf	Ta	W	Re	Au	Tl	Pb	Th	U	Hg
Unit/Symbol	ppm	ppm	ppm	ppm	ppm	ppm	ppm	ppm	ppm	ppm	ppm	ppb	ppm	ppm	ppm	ppm	ppb
Lower Limit	0.1	0.1	0.1	0.1	0.1	0.1	0.1	0.1	0.05	0.1	0.001	0.5	0.02	0.1	0.1	0.1	10
Method Code	AR-MS	AR-MS	AR-MS	AR-MS	AR-MS	AR-MS	AR-MS	AR-MS	AR-MS	AR-MS	AR-MS	AR-MS	AR-MS	AR-MS	AR-MS	AR-MS	AR-MS
OREAS 45d (Aqua Regia) Meas												11.1		16.7	10.4	1.5	
OREAS 45d (Aqua Regia) Cert												21		17.00	11.3	1.64	
OREAS 45d (Aqua Regia) Meas												21.0		17.4	10.5	1.5	
OREAS 45d (Aqua Regia) Cert												21		17.00	11.3	1.64	
OREAS 45d (Aqua Regia) Meas												17.9		16.9	10.7	1.4	
OREAS 45d (Aqua Regia) Cert												21		17.00	11.3	1.64	
OREAS 922 (AQUA REGIA) Meas	0.6							<0.1		1.2			0.17	61.1	15.0	2.1	
OREAS 922 (AQUA REGIA) Cert	0.62		0.480					0.61		1.12			0.14	60	14.5	1.98	
OREAS 907 (Aqua Regia) Meas	0.4	1.8	0.2	0.5	<0.1	0.3	<0.1	0.1	0.1	0.8		102	0.13	33.3	8.1	2.2	
OREAS 907 (Aqua Regia) Cert	0.430	1.63	0.210	0.430	0.0490	0.290	0.0390	1.09		0.980		101	0.120	34.1	8.04	2.15	
OREAS 263 (Aqua Regia) Meas	0.5	2.5	0.4	1.3		0.9							0.55	35.4	11.2	1.2	180
OREAS 263 (Aqua Regia) Cert	0.500	2.64	0.430	1.29		0.990							0.530	34.0	10.6	1.28	170
OREAS 130 (Aqua Regia) Meas			0.4				0.2	0.8		1.6			4.76	1240	9.8	8.4	550
OREAS 130 (Aqua Regia) Cert			0.480				0.150	0.610		1.40			5.92	1300	10.3	8.36	670
OREAS 130 (Aqua Regia) Meas			0.4				0.2	0.8		1.4			4.77	1230	9.6	8.3	560
OREAS 130 (Aqua Regia) Cert			0.480				0.150	0.610		1.40			5.92	1300	10.3	8.36	670
OREAS 130 (Aqua Regia) Meas			0.4				0.1	0.9		1.4			4.93	1320	9.8	7.9	540
OREAS 130 (Aqua Regia) Cert			0.480				0.150	0.610		1.40			5.92	1300	10.3	8.36	670
OREAS 153b (Aqua Regia) Meas	0.3	1.9			0.1	0.8	0.1				0.186	321	0.06	13.1	0.3	<0.1	100
OREAS 153b (Aqua Regia) Cert	0.310	1.92			0.130	0.83	0.110				0.170	320	0.0640	12.4	0.350	0.0610	66.0
OREAS 623 (Aqua Regia) Meas	0.340					0.800	0.120	1.32		2.62		797	0.260	2520	4.72	1.43	830
OREAS 623 (Aqua Regia) Cert	0.1	0.7	<0.1	0.3	<0.1	0.2	<0.1	<0.1	<0.05	0.2	<0.001	7.9	<0.02	2.3	1.5	1.9	160
E OF LZ Dup	0.1	0.7	0.1	0.2	<0.1	0.2	<0.1	0.1	<0.05	0.2	<0.001	8.5	<0.02	2.4	1.6	2.0	150
Method Blank	<0.1	<0.1	<0.1	<0.1	<0.1	<0.1	<0.1	<0.1	<0.05	<0.1	<0.001	2.2	<0.02	<0.1	<0.1	<0.1	50
Method Blank	<0.1	<0.1	<0.1	<0.1	<0.1	<0.1	<0.1	<0.1	<0.05	<0.1	<0.001	<0.5	<0.02	0.1	<0.1	<0.1	30

Analyte Symbol	Tb	Dy	Ho	Er	Tm	Yb	Lu	Hf	Ta	W	Re	Au	Tl	Pb	Th	U	Hg
Unit Symbol	ppm	ppm	ppm	ppm	ppm	ppm	ppm	ppm	ppm	ppm	ppm	ppb	ppm	ppm	ppm	ppm	ppb
Lower Limit	0.1	0.1	0.1	0.1	0.1	0.1	0.1	0.1	0.05	0.1	0.001	0.5	0.02	0.1	0.1	0.1	10
Method Code	AR-MS	AR-MS	AR-MS	AR-MS	AR-MS	AR-MS	AR-MS	AR-MS	AR-MS	AR-MS	AR-MS	AR-MS	AR-MS	AR-MS	AR-MS	AR-MS	AR-MS
Method Blank	< 0.1	< 0.1	< 0.1	< 0.1	< 0.1	< 0.1	< 0.1	< 0.1	< 0.05	< 0.1	< 0.001	< 0.5	< 0.02	< 0.1	< 0.1	< 0.1	30

Quality Analysis ...



Innovative Technologies

Report No.: A21-13331
Report Date: 13-Aug-21
Date Submitted: 14-Jul-21
Your Reference:

GEORGE LUCUIK
30 CARLBERT ST
SAULT STE MARIE ON P6A 5S5
Canada

ATTN: GEORGE LUCUIK

CERTIFICATE OF ANALYSIS

10 Rock samples were submitted for analysis.

The following analytical package(s) were requested:		Testing Date:
UT-1-0.5g	QOP Ultratrace-1 (Aqua Regia ICPMS)	2021-08-10 10:28:05

REPORT A21-13331

This report may be reproduced without our consent. If only selected portions of the report are reproduced, permission must be obtained. If no instructions were given at time of sample submittal regarding excess material, it will be discarded within 90 days of this report. Our liability is limited solely to the analytical cost of these analyses. Test results are representative only of material submitted for analysis.

Notes:

Assays are recommended for values above the upper limit. The Au from AR-MS is for information purposes, for accurate Au fire assay 1A2 should be requested.



LabID: 266

ACTIVATION LABORATORIES LTD.

41 Bittern Street, Ancaster, Ontario, Canada, L9G 4V5
TELEPHONE +905 648-9611 or +1.888.228.5227 FAX +1.905.648.9613
E-MAIL Ancaster@actlabs.com ACTLABS GROUP WEBSITE www.actlabs.com

CERTIFIED BY:

Emmanuel Esemé, Ph.D.
Quality Control Coordinator

Analyte Symbol	TI	S	P	LI	Be	B	Na	Mg	Al	K	Bi	Ca	Sc	V	Cr	Mn	Fe	Co	Ni	Cu	Zn	Ga	Ge
Unit Symbol	%	%	%	ppm	ppm	ppm	%	%	%	%	ppm	%	ppm	ppm	ppm	ppm	%	ppm	ppm	ppm	ppm	ppm	ppm
Lower Limit	0.001	1	0.001	0.1	0.1	1	0.001	0.01	0.01	0.01	0.02	0.01	0.1	1	1	1	0.01	0.1	0.1	0.2	0.1	0.02	0.1
Method Code	AR-MS	AR-MS	AR-MS	AR-MS	AR-MS	AR-MS	AR-MS	AR-MS	AR-MS	AR-MS	AR-MS	AR-MS	AR-MS	AR-MS	AR-MS	AR-MS	AR-MS	AR-MS	AR-MS	AR-MS	AR-MS	AR-MS	AR-MS
BMI	0.234	<1	0.040	21.0	0.5	7	0.088	1.00	1.36	0.54	0.15	0.48	5.1	49	65	361	3.59	9.6	19.8	18.7	87.3	6.54	<0.1
BMI	0.406	<1	0.063	10.0	0.3	12	0.127	1.34	2.08	0.25	0.03	1.60	7.9	205	35	584	6.60	28.3	40.5	146	93.4	11.2	<0.1
IRON	0.008	<1	0.009	7.7	0.3	5	0.024	0.45	0.43	0.02	0.42	0.05	3.8	19	7	181	2.24	10.3	8.2	1250	28.4	1.24	<0.1
RED PIT	0.004	<1	0.007	22.8	0.6	51	0.012	0.62	1.40	0.07	0.33	0.17	52.2	96	9	1690	7.48	15.5	9.4	322	42.1	2.09	<0.1
NEAR RED	0.005	<1	0.017	15.5	0.1	5	0.026	4.91	0.98	0.05	0.10	11.0	7.5	60	7	7430	6.48	14.3	17.4	12.7	10.0	7.79	<0.1
RED	<0.001	<1	0.001	1.7	0.1	8	0.013	0.06	0.17	0.03	0.05	0.02	32.3	5	2	238	0.93	2.2	2.0	186	4.4	0.40	<0.1
115	0.082	<1	0.035	41.6	0.5	5	0.011	3.62	3.19	<0.01	0.22	0.28	10.6	145	21	1840	7.84	22.1	37.7	108	91.7	13.1	<0.1
112	0.049	<1	0.042	30.9	0.4	5	0.072	1.53	1.59	0.06	0.27	0.08	11.2	157	11	470	7.14	17.6	51.1	2810	13.6	5.42	<0.1
3A	0.004	<1	0.025	7.5	0.3	9	0.023	1.93	0.74	0.03	0.09	5.93	19.7	80	23	5680	6.14	13.3	26.8	12.1	16.0	5.42	<0.1
3B	0.002	<1	0.004	8.3	<0.1	4	0.028	5.93	0.38	<0.01	0.03	15.9	12.0	35	3	>10000	6.71	8.8	8.2	16.1	5.3	3.21	<0.1

Analyte Symbol	As	Rb	Sr	Y	Zr	Nb	Mo	Ag	In	Sn	Sb	Te	Cs	Ba	La	Ce	Cd	Pr	Nd	Sm	Se	Eu	Gd
Unit Symbol	ppm	ppm	ppm	ppm	ppm	ppm	ppm	ppm	ppm	ppm	ppm	ppm	ppm	ppm	ppm	ppm	ppm	ppm	ppm	ppm	ppm	ppm	ppm
Lower Limit	0.1	0.1	0.5	0.01	0.1	0.1	0.01	0.002	0.02	0.05	0.02	0.02	0.02	0.5	0.5	0.01	0.01	0.1	0.02	0.1	0.1	0.1	0.1
Method Code	AR-MS	AR-MS	AR-MS	AR-MS	AR-MS	AR-MS	AR-MS	AR-MS	AR-MS	AR-MS	AR-MS	AR-MS	AR-MS	AR-MS	AR-MS	AR-MS	AR-MS	AR-MS	AR-MS	AR-MS	AR-MS	AR-MS	AR-MS
BMI	1.0	36.4	25.8	6.43	6.3	0.3	0.31	0.034	0.02	2.56	0.05	< 0.02	1.39	124	22.7	39.4	0.02	3.8	14.1	3.0	< 0.1	0.5	2.4
BM2	< 0.1	23.4	26.0	15.7	4.1	0.2	0.54	0.063	0.03	0.80	0.04	< 0.02	0.53	44.7	12.3	25.0	0.10	2.9	12.5	3.1	0.2	0.7	3.1
IRON	33.3	0.6	7.1	1.69	3.6	< 0.1	0.40	0.891	0.15	0.23	0.30	0.06	0.13	53.0	3.0	4.83	0.04	0.6	2.54	0.4	1.4	0.1	0.4
RED PIT	11.2	3.2	6.2	15.8	1.1	< 0.1	0.61	0.104	0.38	0.34	0.49	< 0.02	2.08	72.2	9.5	7.93	< 0.01	1.6	6.09	1.5	< 0.1	0.6	2.1
NEAR RED	< 0.1	1.0	36.5	26.5	2.5	< 0.1	0.08	0.014	0.23	< 0.05	0.07	< 0.02	0.06	13.0	14.8	31.0	0.02	3.8	18.0	5.0	< 0.1	1.5	3.0
RED	2.3	1.2	1.9	4.40	0.1	< 0.1	0.24	0.100	0.03	0.13	0.10	< 0.02	0.17	13.3	< 0.5	0.70	< 0.01	< 0.1	0.32	0.2	0.1	< 0.1	0.5
115	1.8	0.3	3.0	9.96	5.4	< 0.1	0.29	0.014	0.29	0.26	0.04	0.02	0.08	25.8	10.7	35.1	0.03	2.3	10.0	2.5	0.2	1.2	3.0
112	< 0.1	2.1	5.6	9.91	14.1	< 0.1	0.38	0.087	< 0.02	0.26	0.21	< 0.02	0.17	40.2	70.4	139	0.01	15.9	66.6	13.0	1.1	3.9	8.9
3A	0.5	1.3	69.4	21.8	2.5	< 0.1	0.22	0.012	0.21	0.13	0.06	< 0.02	0.14	20.6	16.4	32.2	0.04	4.0	18.1	4.5	< 0.1	1.5	5.4
3B	< 0.1	0.3	46.0	28.4	1.0	< 0.1	0.08	0.009	0.32	< 0.05	0.03	< 0.02	0.08	10.0	24.7	49.1	0.01	5.8	24.9	4.8	< 0.1	1.7	5.8

Analyte Symbol	Tb	Dy	Ho	Er	Tm	Yb	Lu	Hf	Ta	W	Re	Au	Tl	Pb	Th	U	Hg
Unit Symbol	ppm	ppm	ppm	ppm	ppm	ppm	ppm	ppm	ppm	ppm	ppm	ppb	ppm	ppm	ppm	ppm	ppb
Method Code	AR-MS	AR-MS	AR-MS	AR-MS	AR-MS	AR-MS	AR-MS	AR-MS	AR-MS	AR-MS	AR-MS	AR-MS	AR-MS	AR-MS	AR-MS	AR-MS	AR-MS
BMI	0.3	1.5	0.2	0.6	<0.1	0.4	<0.1	0.2	<0.05	0.1	<0.001	<0.5	0.26	5.8	7.8	0.5	130
BM2	0.5	2.9	0.6	1.8	0.2	1.3	0.2	<0.1	<0.05	<0.1	0.002	2.1	0.11	13.0	3.1	0.6	140
IRON	<0.1	0.3	<0.1	0.3	<0.1	0.2	<0.1	<0.1	<0.05	0.1	<0.001	13.2	<0.02	4.8	0.3	1.0	140
RED PIT	0.4	2.8	0.5	1.5	0.2	1.2	0.2	<0.1	<0.05	0.2	<0.001	<0.5	<0.02	9.2	0.3	1.0	110
NEAR RED	0.7	4.2	0.8	2.3	0.3	1.9	0.3	<0.1	<0.05	<0.1	<0.001	<0.5	<0.02	1.5	0.2	0.8	100
RED	0.1	0.8	0.2	0.6	<0.1	0.5	<0.1	<0.1	<0.05	<0.1	<0.001	<0.5	<0.02	0.6	<0.1	0.1	80
115	0.4	2.2	0.4	1.1	0.1	0.8	0.1	<0.1	<0.05	<0.1	<0.001	2.2	<0.02	2.1	1.0	0.2	80
112	0.7	2.6	0.4	1.1	0.1	0.9	0.1	0.3	<0.05	<0.1	<0.001	<0.5	<0.02	1.4	1.3	0.6	80
3A	0.8	4.3	0.7	2.2	0.3	1.8	0.3	<0.1	<0.05	<0.1	<0.001	<0.5	<0.02	3.0	0.4	0.2	90
3B	0.9	4.6	0.8	2.9	0.4	2.5	0.4	<0.1	<0.05	<0.1	<0.001	<0.5	<0.02	1.8	0.3	0.2	40

Analyte/Symbol	Tl	S	P	Li	Be	B	Na	Mg	Al	K	Bi	Ca	Sc	V	Cr	Mn	Fe	Co	Ni	Cu	Zn	Ga	Ge
Unit Symbol	%	%	%	ppm	ppm	ppm	%	%	%	%	ppm	%	ppm	ppm	ppm	ppm	%	ppm	ppm	ppm	ppm	ppm	ppm
Lower Limit	0.001	1	0.001	0.1	0.1	1	0.001	0.01	0.01	0.01	0.02	0.01	0.1	1	1	1	0.01	0.1	0.1	0.2	0.1	0.2	0.1
Method Code	AR-MS	AR-MS	AR-MS	AR-MS	AR-MS	AR-MS	AR-MS	AR-MS	AR-MS	AR-MS	AR-MS	AR-MS	AR-MS	AR-MS	AR-MS	AR-MS	AR-MS	AR-MS	AR-MS	AR-MS	AR-MS	AR-MS	AR-MS
OREAS 45d (Aqua Regia) Meas	< 1	0.039		18.0			0.038	0.19	6.42	0.13	0.28	0.10	48.4	192	487	436	15.1	28.1	226	382	38.2	20.5	
OREAS 45d (Aqua Regia) Cert		0.045	0.035	11.9			0.031	0.144	4.860	0.097	0.30	0.089	41.50	201.0	467	400.000	13.650	26.2	176.0	345.0	30.6	17.9	
OREAS 922 (AQUA REGIA) Meas	< 1	0.064		24.4	0.9		0.022	1.20	2.80	0.40	9.10	0.36	3.9	32	44	744	4.93	19.0	37.7	2270	261	7.54	< 0.1
OREAS 922 (AQUA REGIA) Cert		0.386	0.063	22.8	0.65		0.021	1.33	2.72	0.376	10.3	0.324	3.15	29.4	40.7	730	5.05	19.4	34.3	2176	256	7.62	0.10
OREAS 923 (AQUA REGIA) Meas	< 1	0.059		24.4	0.6			1.39	2.83	0.37	19.6	0.39	3.5	29	37	769	5.49	19.1	30.6	4080	304	7.95	
OREAS 923 (AQUA REGIA) Cert		0.684	0.061	23.4	0.61			1.43	2.80	0.322	21.8	0.326	3.09	30.6	39.4	850	5.91	22.2	32.7	4248	335	8.01	
OREAS 907 (Aqua Regia) Meas	0.021	< 1	0.022	4.8	0.8		0.087	0.23	1.27	0.34	21.6	0.26	2.3	5	10	316	8.11	44.4	6.4	6680	140	12.0	
OREAS 907 (Aqua Regia) Cert		0.0170	0.0660	4.05	0.870		0.0860	0.221	0.945	0.286	22.3	0.280	2.16	5.12	8.59	330	8.18	43.7	4.74	6370	139	14.7	
OREAS 907 (Aqua Regia) Meas	0.021	< 1	0.021	5.0	1.1		0.091	0.23	1.28	0.34	21.6	0.27	2.4	5	9	307	7.95	41.2	4.6	6180	144	13.6	
OREAS 907 (Aqua Regia) Cert		0.0170	0.0660	4.05	0.870		0.0860	0.221	0.945	0.286	22.3	0.280	2.16	5.12	8.59	330	8.18	43.7	4.74	6370	139	14.7	
OREAS 263 (Aqua Regia) Meas	< 1	0.040		20.5	1.3		0.078	0.58	1.98	0.35	0.51	1.03	3.5	25	51	500	3.60	30.7	75.8	93.4	133	3.49	
OREAS 263 (Aqua Regia) Cert		0.126	0.0410	20.1	1.22		0.0790	0.593	1.29	0.288	0.570	1.03	3.52	22.8	48.0	490	3.68	31.0	72.0	87.0	127	4.92	
OREAS 130 (Aqua Regia) Meas	0.029	7	0.091	33.4				0.96	1.28	0.52	3.53	1.74	3.7	37	26	1650	7.62	27.8	37.0	252	> 5000	5.47	
OREAS 130 (Aqua Regia) Cert		0.0270	0.0860	29.9				0.892	1.10	0.500	3.05	1.81	3.42	33.1	23.2	1630	7.27	27.1	35.2	226	16900	4.78	
OREAS 153b (Aqua Regia) Meas	0.050	1	0.044	3.6	0.3		0.156	1.40	2.67	0.34	1.52	1.19	9.2	149	15	243	3.52	13.8	11.2	6400	108	8.64	
OREAS 153b (Aqua Regia) Cert		0.0500	0.0470	3.28	0.180		0.148	1.47	2.28	0.365	1.81	1.32	9.98	153	16.2	240	3.60	14.9	11.1	6700	118	8.06	
OREAS 623 (Aqua Regia) Meas	11	0.043		9.2	0.4		0.077	1.13	2.00	0.18	18.6	1.10	5.1	16	20	585	13.6	232	16.4	> 10000	> 5000	14.9	
OREAS 623 (Aqua Regia) Cert		8.75	0.0400	10.0	0.370		0.0680	1.11	1.80	0.175	16.9	1.09	4.63	15.8	19.4	570	13.0	216	15.6	17200	10100	11.9	
OREAS 623 (Aqua Regia) Meas	9	0.034		7.2	0.4		0.061	0.92	1.63	0.15	16.8	0.93	4.4	14	17	504	11.9	193	14.0	> 10000	> 5000	12.2	
OREAS 623 (Aqua Regia) Cert		8.75	0.0400	10.0	0.370		0.0680	1.11	1.80	0.175	16.9	1.09	4.63	15.8	19.4	570	13.0	216	15.6	17200	10100	11.9	
OREAS 521 (Aqua Regia) Meas	0.133	2	0.074	14.1	0.6		0.047	0.90	1.20	0.45	5.89	3.53	9.5	192	33	3170	21.6	388	76.7	6300	27.3	13.2	< 0.1
OREAS 521 (Aqua Regia) Cert		0.141	0.081	16.7	0.5		0.045	1.1	1.44	0.53	5.84	3.66	10	200	33	3000	20.0	374	68.0	5990	23.6	14.3	0.3
RED PIT Orig	0.004	< 1	0.007	23.8	0.7		0.012	0.65	1.46	0.08	0.35	0.18	53.6	99	10	1740	7.80	16.1	9.7	335	44.2	2.27	< 0.1
RED PIT Dup	0.004	< 1	0.007	21.7	0.5		0.011	0.59	1.34	0.07	0.31	0.16	50.7	92	9	1650	7.15	14.9	9.1	309	40.0	1.90	< 0.1
Method Blank	< 0.001	< 1	< 0.001	< 0.1	0.2		0.007	< 0.01	< 0.01	< 0.01	< 0.02	< 0.01	0.2	< 1	2	< 1	< 0.01	< 0.1	< 0.1	< 0.2	< 0.1	0.04	< 0.1
Method Blank	< 0.001	< 1	< 0.001	< 0.1	0.3		0.007	< 0.01	< 0.01	< 0.01	< 0.02	< 0.01	0.1	< 1	1	< 1	< 0.01	< 0.1	< 0.1	0.3	0.6	0.07	< 0.1

Analyte Symbol	TI	S	P	Li	Be	B	Na	Mg	Al	K	Bi	Ca	Sc	V	Cr	Mn	Fe	Co	Ni	Cu	Zn	Ga	Ge
Unit Symbol	%	%	%	ppm	ppm	ppm	%	%	%	%	ppm	%	ppm	ppm	ppm	ppm	%	ppm	ppm	ppm	ppm	ppm	ppm
Lower Limit	0.001	1	0.001	0.1	0.1	1	0.001	0.01	0.01	0.01	0.02	0.01	0.1	1	1	1	0.01	0.1	0.1	0.2	0.1	0.02	0.1
Method Code	AR-MS	AR-MS	AR-MS	AR-MS	AR-MS	AR-MS	AR-MS	AR-MS	AR-MS	AR-MS	AR-MS	AR-MS	AR-MS	AR-MS	AR-MS	AR-MS	AR-MS	AR-MS	AR-MS	AR-MS	AR-MS	AR-MS	AR-MS
Method Blank	< 0.001	< 1	< 0.001	< 0.1	< 0.1	0.1	0.008	< 0.01	< 0.01	< 0.01	0.06	< 0.01	< 0.1	< 1	< 1	< 1	< 0.01	< 0.1	0.5	1.4	0.6	< 0.02	< 0.1

Analyte Symbol	As	Rb	Sr	Y	Zr	Nb	Mo	Ag	In	Sn	Sb	Te	Cs	Ba	La	Ce	Cd	Pr	Nd	Sm	Se	Eu	Gd	
Unit Symbol	ppm	ppm	ppm	ppm	ppm	ppm	ppm	ppm	ppm	ppm	ppm	ppm	ppm	ppm	ppm	ppm	ppm	ppm	ppm	ppm	ppm	ppm	ppm	
Lower Limit	0.1	0.1	0.5	0.01	0.1	0.1	0.01	0.002	0.02	0.05	0.02	0.02	0.02	0.5	0.5	0.01	0.01	0.1	0.02	0.1	0.1	0.1	0.1	
Method Code	AR-MS	AR-MS	AR-MS	AR-MS	AR-MS	AR-MS	AR-MS	AR-MS	AR-MS	AR-MS	AR-MS	AR-MS	AR-MS	AR-MS	AR-MS	AR-MS	AR-MS	AR-MS	AR-MS	AR-MS	AR-MS	AR-MS	AR-MS	
OREAS 45d (Aqua Regia) Meas	4.7	23.4	15.4	5.02					0.10	2.01				81.5	12.2	26.3								
OREAS 45d (Aqua Regia) Cert	6.50	20.9	11.0	5.08					0.085	1.950				80	9.960	24.8								
OREAS 922 (AQUA REGIA) Meas	6.3	23.5	15.3	17.8	16.4	0.4	0.74	0.781	0.25	4.01	0.69		1.91	77.3	39.4	70.4	0.29	7.8	30.4	5.4	3.3		4.7	
OREAS 922 (AQUA REGIA) Cert	6.12	22.7	15.0	16.0	22.3	0.35	0.69	0.851	0.24	3.83	0.57		1.76	70	32.5	63	0.28	7.33	27.5	4.98	3.44		4.44	
OREAS 923 (AQUA REGIA) Meas	6.0	19.5	12.8	15.6	19.6		0.84	1.44	0.42	6.01	0.59		1.48	32.6	31.3	60.1	0.39	6.9	26.6	4.8	4.7		4.3	
OREAS 923 (AQUA REGIA) Cert	7.07	19.6	13.6	14.3	22.5		0.84	1.62	0.45	5.99	0.58		1.56	54	30.0	60	0.40	6.79	25.4	4.34	5.99		4.07	
OREAS 907 (Aqua Regia) Meas	37.5	18.4	13.4	6.95	5.7		5.85	1.28	2.24	2.46	1.98	0.23	1.22	230	37.2	70.2	0.58	7.7	28.1	5.5	8.8		4.1	
OREAS 907 (Aqua Regia) Cert	37.0	16.7	11.7	6.52	43.7		5.64	1.30	2.35	2.34	2.28	0.230	1.17	225	36.1	73.0	0.540	7.36	27.8	4.79	9.05		3.45	
OREAS 907 (Aqua Regia) Meas	38.7	18.4	12.2	6.45	3.3		5.60	1.36	2.39	2.66	2.48	0.21	1.34	243	37.6	71.0	0.58	7.2	29.6	4.4	9.5		3.9	
OREAS 907 (Aqua Regia) Cert	37.0	16.7	11.7	6.52	43.7		5.64	1.30	2.35	2.34	2.28	0.230	1.17	225	36.1	73.0	0.540	7.36	27.8	4.79	9.05		3.45	
OREAS 263 (Aqua Regia) Meas	29.3		17.3	10.6			0.58	0.303	0.04		7.94	0.22		183			0.20			4.7			3.9	
OREAS 263 (Aqua Regia) Cert	30.8		16.9	12.0			0.570	0.285	0.0290		7.37	0.210		175			0.270			4.41			3.89	
OREAS 130 (Aqua Regia) Meas	222	43.5	20.7	13.3	25.7		8.66	6.52	0.20		4.76	0.17	2.99		25.7	53.1	30.7	6.0						3.7
OREAS 130 (Aqua Regia) Cert	205	41.6	23.2	13.0	19.0		8.25	6.27	0.200		4.69	0.170	2.96		26.4	54.0	28.8	5.93						3.53
OREAS 153b (Aqua Regia) Meas	77.4	6.2	34.9	8.22	0.7		155	1.35	0.20	2.77	1.71	0.24	0.17	16.6	3.5	8.52	0.22		5.97	1.2	10.1			
OREAS 153b (Aqua Regia) Cert	80.0	7.34	31.4	9.38	0.860		156	1.40	0.210	3.27	2.12	0.250	0.260	22.8	3.79	9.11	0.240		6.31	1.71	10.5			
OREAS 623 (Aqua Regia) Meas	87.8		15.2	8.72	68.0		11.3	21.5	2.07	4.32	23.6	0.68	0.80		20.6	40.7	54.9							22.8
OREAS 623 (Aqua Regia) Cert	76.0		14.2	7.43	50.0		8.38	20.4	1.94	4.07	20.2	0.570	0.750		17.9	36.4	52.0							18.6
OREAS 623 (Aqua Regia) Meas	78.9		13.2	7.73	62.0		9.42	19.1	1.84	3.86	20.6	0.55	0.75		17.9	36.5	47.4							18.5
OREAS 521 (Aqua Regia) Meas	76.0		14.2	7.43	50.0		8.38	20.4	1.94	4.07	20.2	0.570	0.750		17.9	36.4	52.0							18.6
OREAS 521 (Aqua Regia) Cert	342	28.6	37.4	14.0	42.3	0.6	139	0.836	0.18	5.81	4.21	0.76	0.53		118	106								2.5
OREAS 521 (Aqua Regia) Meas	333	31.8	54.0	15.0	38.3	0.5	133	0.817	0.17	5.78	3.65	0.74	0.55		147	121								2.4
RED PIT Orig	12.1	3.3	6.8	15.9	1.3	<0.1	0.63	0.106	0.39	0.33	0.51	<0.02	2.14	74.3	9.7	8.19	<0.01	1.6	6.31	1.6	<0.1	0.6		2.2
RED PIT Dup	10.3	3.1	5.6	15.7	1.0	<0.1	0.60	0.102	0.38	0.34	0.47	0.02	2.02	70.0	9.3	7.68	0.03	1.5	5.87	1.4	<0.1	0.6		2.0
Method Blank	<0.1	<0.1	<0.5	<0.01	<0.1	<0.1	0.04	0.007	<0.02	<0.05	0.14	<0.02	<0.02	2.5	<0.5	<0.01	0.02	<0.1	<0.02	<0.1	<0.1	<0.1		<0.1
Method Blank	<0.1	<0.1	<0.5	<0.01	<0.1	<0.1	0.02	0.004	<0.02	<0.05	0.04	<0.02	<0.02	3.0	<0.5	<0.01	0.01	<0.1	<0.02	<0.1	<0.1	<0.1		<0.1

Analyte Symbol	As	Rb	Sr	Y	Zr	Nb	Mo	Ag	In	Sn	Sb	Te	Cs	Ba	La	Ce	Cd	Pr	Nd	Sm	Se	Eu	Gd
Unit Symbol	ppm	ppm	ppm	ppm	ppm	ppm	ppm	ppm	ppm	ppm	ppm	ppm	ppm	ppm	ppm	ppm	ppm	ppm	ppm	ppm	ppm	ppm	ppm
Lower Limit	0.1	0.1	0.5	0.01	0.1	0.1	0.01	0.002	0.02	0.05	0.02	0.02	0.02	0.5	0.5	0.01	0.01	0.1	0.02	0.1	0.1	0.1	0.1
Method Code	AR-MS	AR-MS	AR-MS	AR-MS	AR-MS	AR-MS	AR-MS	AR-MS	AR-MS	AR-MS	AR-MS	AR-MS	AR-MS	AR-MS	AR-MS	AR-MS	AR-MS	AR-MS	AR-MS	AR-MS	AR-MS	AR-MS	AR-MS
Method Blank	< 0.1	< 0.1	< 0.5	0.02	< 0.1	< 0.1	0.07	0.005	< 0.02	< 0.05	0.03	< 0.02	< 0.02	3.2	< 0.5	0.03	< 0.01	< 0.1	< 0.02	< 0.1	0.5	< 0.1	< 0.1

Analyte Symbol	Tb	Dy	Ho	Er	Tm	Yb	Lu	Hf	Ta	W	Re	Au	Tl	Pb	Th	U	Hg
Unit Symbol	ppm	ppm	ppm	ppm	ppm	ppm	ppm	ppm	ppm	ppm	ppm	ppb	ppm	ppm	ppm	ppm	ppb
Lower Limit	0.1	0.1	0.1	0.1	0.1	0.1	0.1	0.1	0.05	0.1	0.001	0.5	0.02	0.1	0.1	0.1	10
Method Code	AR-MS	AR-MS	AR-MS	AR-MS	AR-MS	AR-MS	AR-MS	AR-MS	AR-MS	AR-MS	AR-MS	AR-MS	AR-MS	AR-MS	AR-MS	AR-MS	AR-MS
OREAS 45d (Aqua Regia) Meas												21.0		19.2	11.5	1.6	
OREAS 45d (Aqua Regia) Cert												21		17.00	11.3	1.64	
OREAS 922 (AQUA REGIA) Meas														0.16	57.9	14.7	2.2
OREAS 922 (AQUA REGIA) Cert														0.14	60	14.5	1.98
OREAS 923 (AQUA REGIA) Meas														0.13	73.6	13.1	1.9
OREAS 923 (AQUA REGIA) Cert														0.12	81	14.3	1.80
OREAS 907 (Aqua Regia) Meas														0.13	33.0	8.2	2.1
OREAS 907 (Aqua Regia) Cert														0.120	34.1	8.04	2.15
OREAS 907 (Aqua Regia) Meas														0.13	33.4	8.4	2.2
OREAS 907 (Aqua Regia) Cert														0.120	34.1	8.04	2.15
OREAS 263 (Aqua Regia) Meas														0.48	31.4	10.0	1.3
OREAS 263 (Aqua Regia) Cert														0.530	34.0	10.6	1.28
OREAS 130 (Aqua Regia) Meas														4.80	1290	10.1	8.8
OREAS 130 (Aqua Regia) Cert														5.92	1300	10.3	8.36
OREAS 130 (Aqua Regia) Meas														0.06	11.8	0.3	<0.1
OREAS 130 (Aqua Regia) Cert														0.06	11.8	0.3	<0.1
OREAS 153b (Aqua Regia) Meas														12.4	0.350	0.0610	66.0
OREAS 153b (Aqua Regia) Cert														12.4	0.350	0.0610	66.0
OREAS 623 (Aqua Regia) Meas														25.70	4.8	1.5	760
OREAS 623 (Aqua Regia) Cert														25.70	4.8	1.5	760
OREAS 623 (Aqua Regia) Meas														25.20	4.72	1.43	830
OREAS 623 (Aqua Regia) Cert														25.20	4.72	1.43	830
OREAS 521 (Aqua Regia) Meas														11.7	6.0	24.9	
OREAS 521 (Aqua Regia) Cert														9.04	7.8	28.2	
RED PIT Orig														9.6	0.3	1.0	120
RED PIT Dup														8.9	0.2	0.9	100
Method Blank														<0.1	<0.1	<0.1	30
Method Blank														<0.1	<0.1	<0.1	20

Analyte Symbol	Tb	Dy	Ho	Er	Tm	Yb	Lu	Hf	Ta	W	Re	Au	Tl	Pb	Th	U	Hg
Unit Symbol	ppm	ppm	ppm	ppm	ppm	ppm	ppm	ppm	ppm	ppm	ppm	ppb	ppm	ppm	ppm	ppm	ppb
Lower Limit	0.1	0.1	0.1	0.1	0.1	0.1	0.1	0.1	0.05	0.1	0.001	0.5	0.02	0.1	0.1	0.1	10
Method Code	AR-MS	AR-MS	AR-MS	AR-MS	AR-MS	AR-MS	AR-MS	AR-MS	AR-MS	AR-MS	AR-MS	AR-MS	AR-MS	AR-MS	AR-MS	AR-MS	AR-MS
Method Blank	< 0.1	< 0.1	< 0.1	< 0.1	< 0.1	< 0.1	< 0.1	< 0.1	< 0.05	0.3	< 0.001	< 0.5	< 0.02	0.2	< 0.1	< 0.1	20

