

We are committed to providing [accessible customer service](#).

If you need accessible formats or communications supports, please [contact us](#).

Nous tenons à améliorer [l'accessibilité des services à la clientèle](#).

Si vous avez besoin de formats accessibles ou d'aide à la communication, veuillez [nous contacter](#).

REPORT OF WORK

on claim 608068

McCool Township

Larder Lake Mining Division

by: Douglas Lalonde

May 03, 2022

mccool T.W.P.



10.5° WEST

SCALE 1:10:00

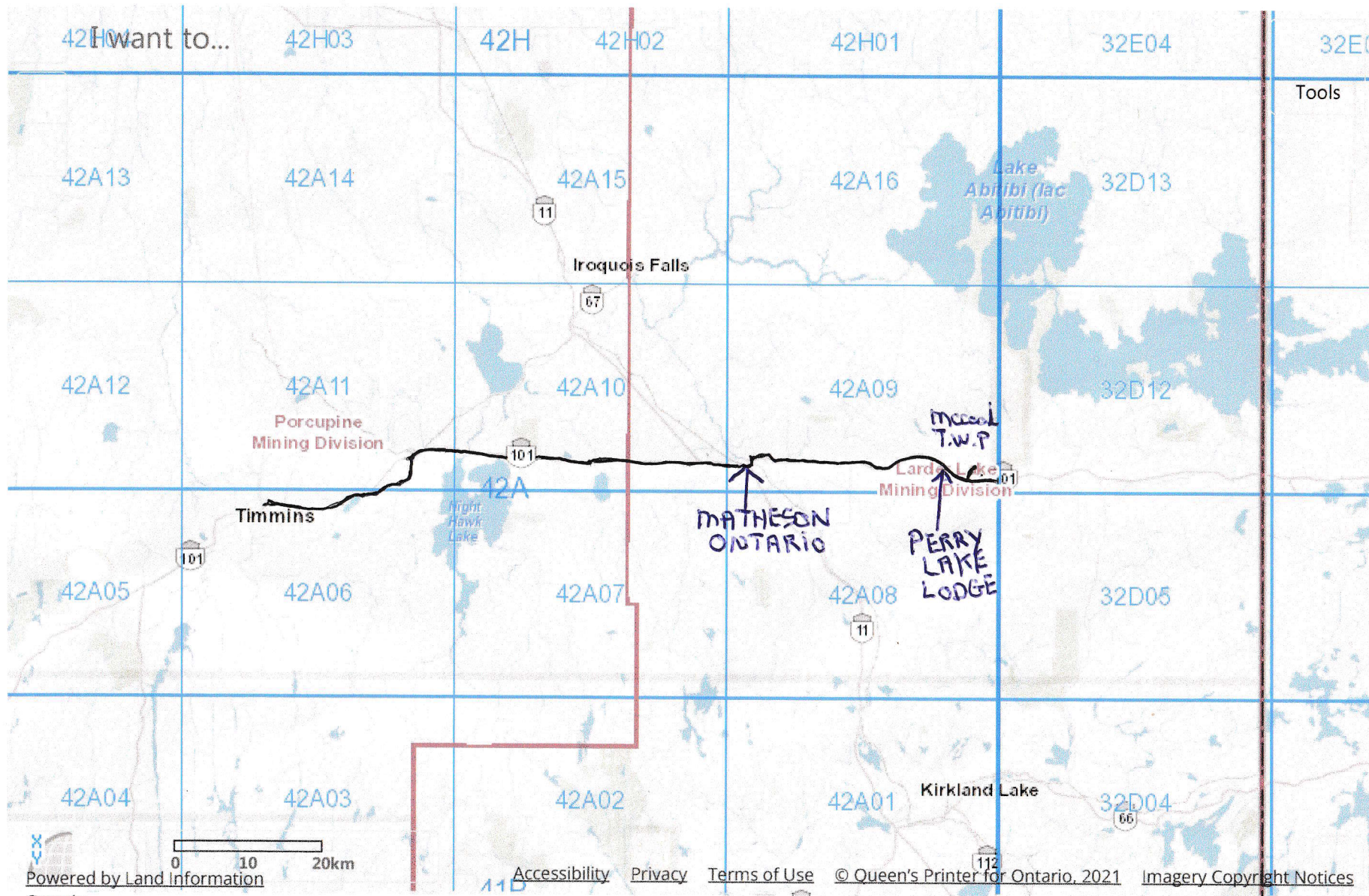
Map Changed. Scale: one to 1,155,581,1086.



MLAS Map Viewer

Ministry of Northern Development, Mines, Natural Resources and Forestry

français



DISTANCE FROM Timmins TO
 MCCOOL T.W.P. TURN OFF 98 KILOMETERS EACH WAY 200 Km Round trip

mccool T.W.P.



10.5° WEST SCALE 1:20:00

Map Changed. Center latitude: 48.5414 degrees North. Center longitude: 80.0457 degrees West. Visible Features: 3 features visible on Alienation, 12 features visible on Mining P... 1 features visible on Mining Licence of Occupation, 3 features visible on Mining Lease, 11 features visible on Non-Mining Land Tenure, 2 features visible on Provincial Grid Group, 1 features visible on Mining Division, 4 features visible on NDM Townships and Areas, 190 features visible on Provincial Grid Cell, 1 features visible on Indian Reserves

| | | | | | | | | | | | | |
|---------------------|---------------------|---------------------|---------------------|---------------------|---------------------|---------------------|---------------------|---------------------|---------------------|----------------------|---------------------|---------------------|
| 552780 42A09A125 | 552781 42A09A126 | 651022 42A09A127 | 299663 42A09A128 | 210481 42A09A129 | 42A09A130 | 42A09A131 | 42A09A132 | 189799 42A09A133 | 552808 42A09A134 | 6508068 42A09A135 | 654857 42A09A136 | 654858 42A09A137 |
| 144086 42A09A145 | 143391 42A09A146 | 131680 42A09A147 | 298716 42A09A148 | 08108 42A09A149 | 42A09A150 | 42A09A151 | 42A09A152 | 293811 42A09A153 | 552809 42A09A154 | 654860 42A09A155 | 654864 42A09A156 | 654865 42A09A157 |
| 312036 42A09A165 | 699347 42A09A166 | 42A09A167 | 42A09A168 | 42A09A169 | 42A09A170 | 42A09A171 | 42A09A172 | 171030 42A09A173 | 552810 42A09A174 | 553219 42A09A175 | 654872 42A09A176 | 654873 42A09A177 |
| 288206 42A09A185 | 214985 42A09A186 | 686221 42A09A187 | 663600 42A09A188 | 274206 42A09A189 | 266786 42A09A190 | 208131 42A09A191 | 322864 42A09A192 | 219752 42A09A193 | 552809 42A09A194 | 553202 42A09A195 | 553201 42A09A196 | 654874 42A09A197 |
| 337148 42A09A205 | 309523 42A09A206 | 175567 42A09A207 | 296811 42A09A208 | 301467 42A09A209 | 252218 42A09A210 | 185413 42A09A211 | 339692 42A09A212 | 245356 42A09A213 | 553031 42A09A214 | 173220 42A09A215 | 266908 42A09A216 | 118 42A09A217 |
| 129488 42A09A225 | 316258 42A09A226 | 130274 42A09A227 | 296812 42A09A228 | 225204 42A09A229 | 133430 42A09A230 | 318118 42A09A231 | 245370 42A09A232 | 118785 42A09A233 | 167093 42A09A234 | 234385 42A09A235 | 286978 42A09A236 | 173221 42A09A237 |
| 293314 42A09A245 | 256059 42A09A246 | 226696 42A09A247 | 189412 42A09A248 | 322447 42A09A249 | 301468 42A09A250 | 225205 42A09A251 | 106702 42A09A252 | 281848 42A09A253 | 103523 42A09A254 | 323018 42A09A255 | 329640 42A09A256 | 206976 42A09A257 |
| 225206 42A09A265 | 239326 42A09A266 | 37381 42A09A267 | 170432 42A09A268 | 153800 42A09A269 | 198945 42A09A270 | 340904 42A09A271 | 302188 42A09A272 | 252715 42A09A273 | 186567 42A09A274 | 320061 42A09A275 | 341506 42A09A276 | 302875 42A09A277 |
| 206977 42A09A285 | 206977 42A09A286 | 206977 42A09A287 | 206977 42A09A288 | 206977 42A09A289 | 206977 42A09A290 | 206977 42A09A291 | 206977 42A09A292 | 206977 42A09A293 | 206977 42A09A294 | 206977 42A09A295 | 206977 42A09A296 | 206977 42A09A297 |

BASELINE LINE

0571025 STARTING POINT

OLD PAKE TRAIL 1 km walk

MCCOOL

3.2 km old Logging Road

42A09A

VEHICLE PARKING

UTM 5378345

T.W.P. LINE

MICHAUD

Hyw 101 EAST

PERRY LAKE LODGE

UTM COORDINATES
TURN OFF
0567613
5378561

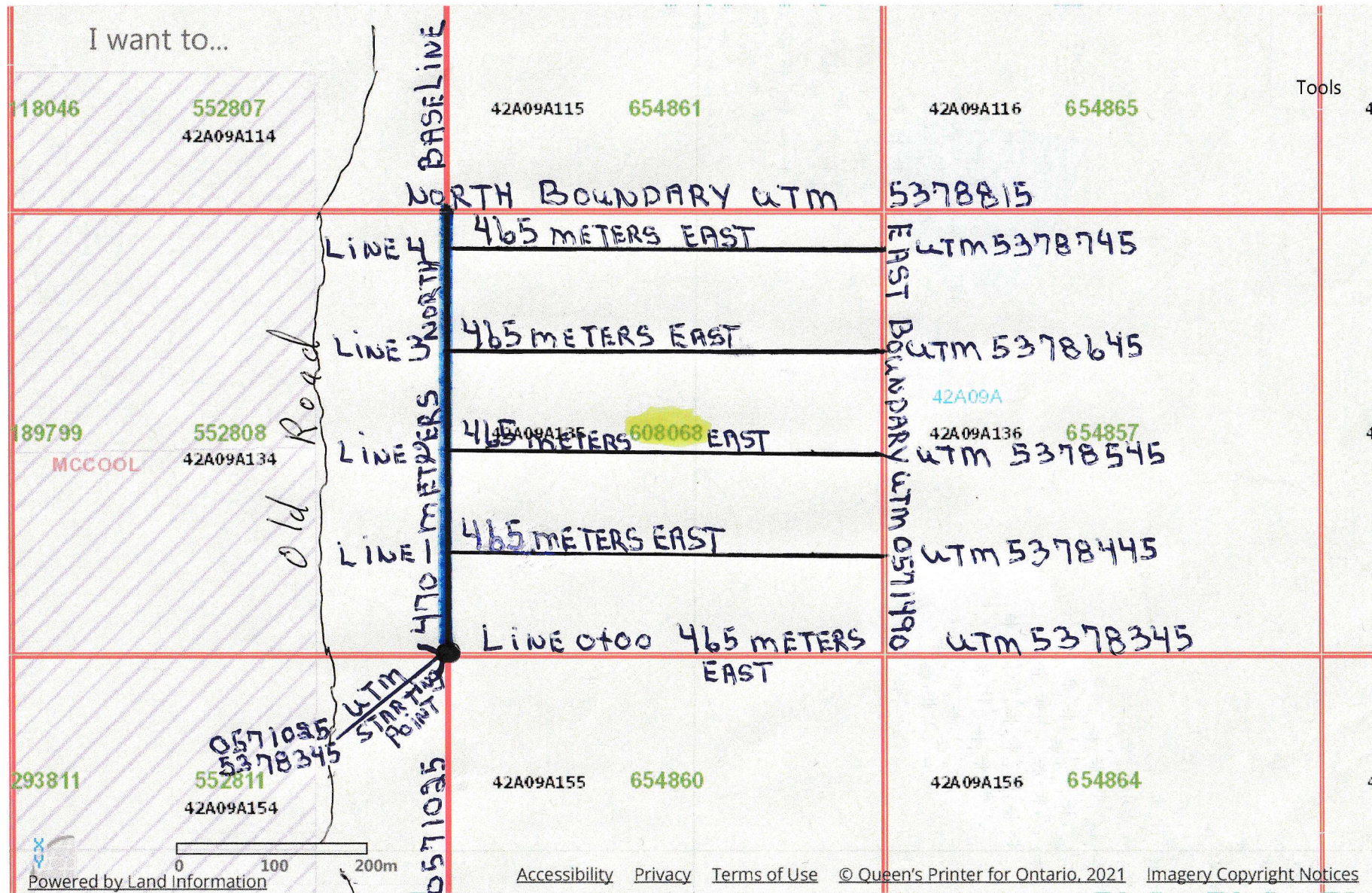
Provincial Recording Office NDM - contact 1-888-415-9845

MCCOOL T.W.P



10.5° WEST Scale 1:50:00

Map Changed. Center latitude: 48.5560 degrees North. Center longitude: 80.0301 degrees West. Visible Features: 3 features visible on Non-Mining Land Tenure. 1 features visible on Provincial Grid Group. 1 features visible on Mining Division. 1 features visible on NDM Townships and Areas. 18 features visible on Provincial Grid Cell.
Ministry of Northern Development, Mines, Natural Resources and Forestry



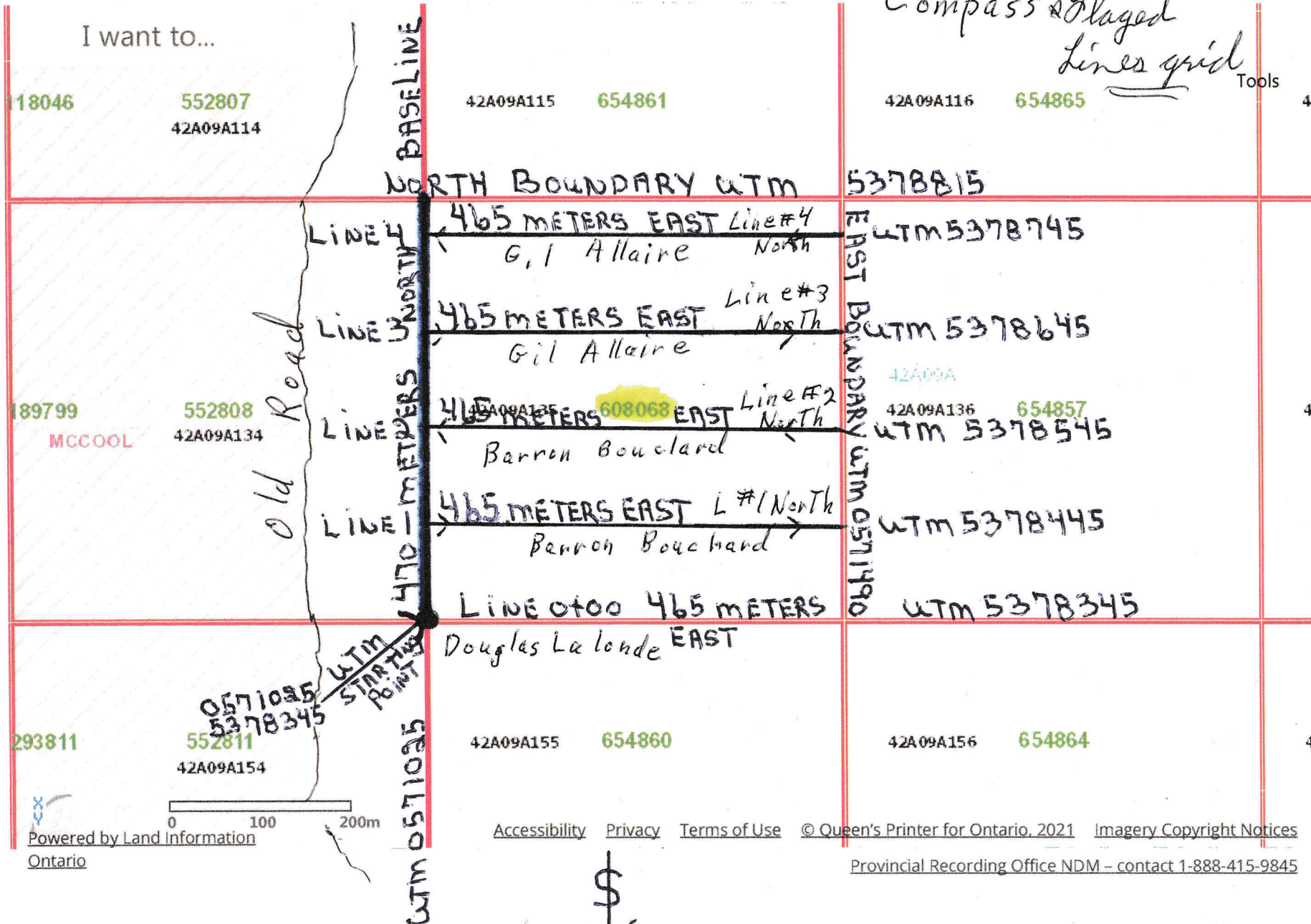
MCCOOL T.W.P

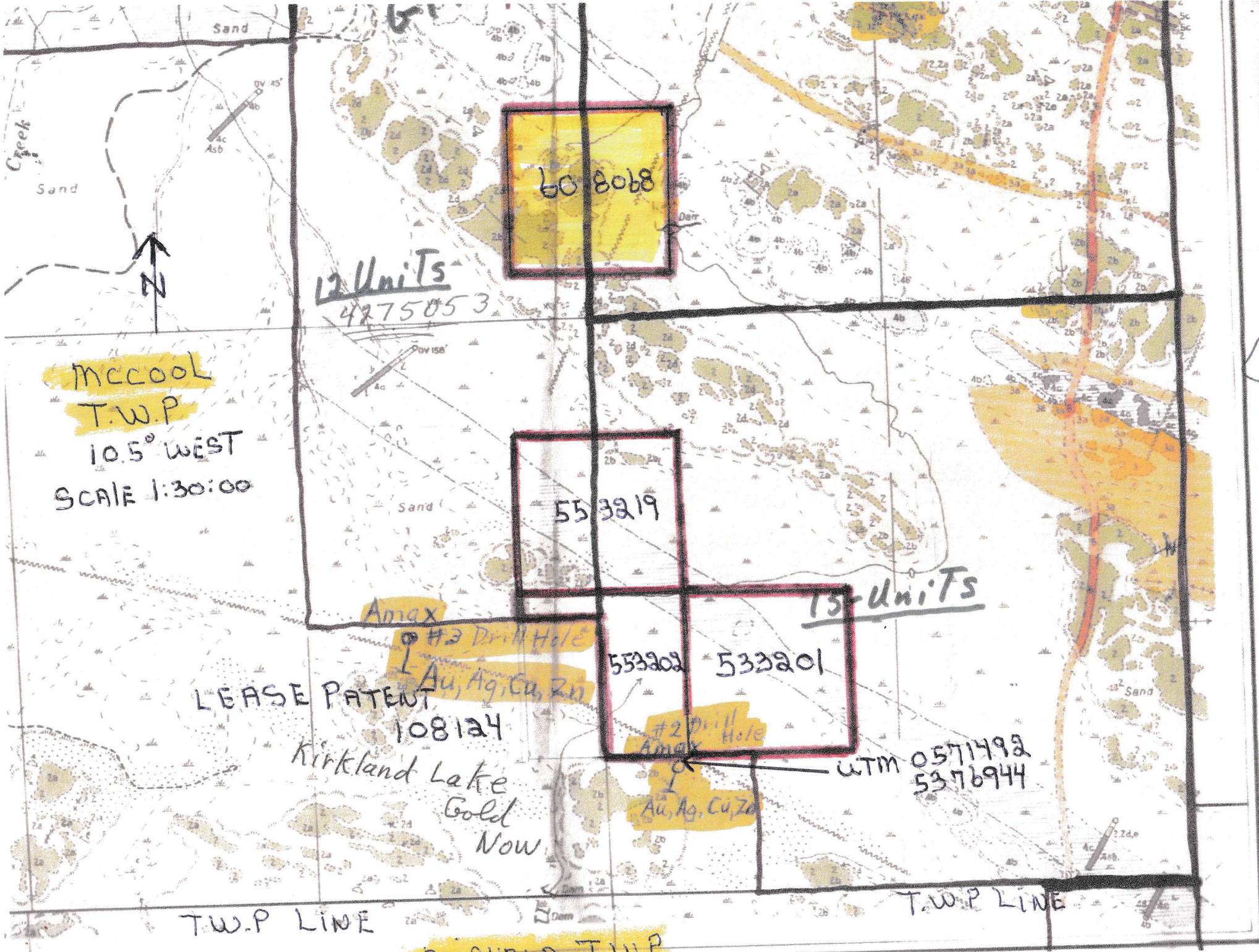


10.5° WEST Scale 1:50:00

Map Changed. Center latitude: 48.5560 degrees North. Center longitude: 80.0301 degrees West. Visible Features: 3 features visible on Non-Mining Land Tenure. 1 features visible on Provincial Grid Group. 1 features visible on Mining Division. 1 features visible on NDM Townships and Areas. 18 features visible on Provincial Grid Cell. Ministry of Northern Development, Mines, Natural Resources and Forestry

Compass & Placed Lines grid Tools





60 8068

12 Units
4275053

MCCOOL
T.W.P
10.5° WEST
SCALE 1:30:00

55 3219

553202 533201

13 Units

LEASE PATENT
108124
Kirkland Lake
Gold
Now

#2 Drill Hole
Amal
Au, Ag, Cu, Zn

#2 Drill Hole
Amal
Au, Ag, Cu, Zn

WTM 0571492
5376944

T.W.P LINE

T.W.P LINE

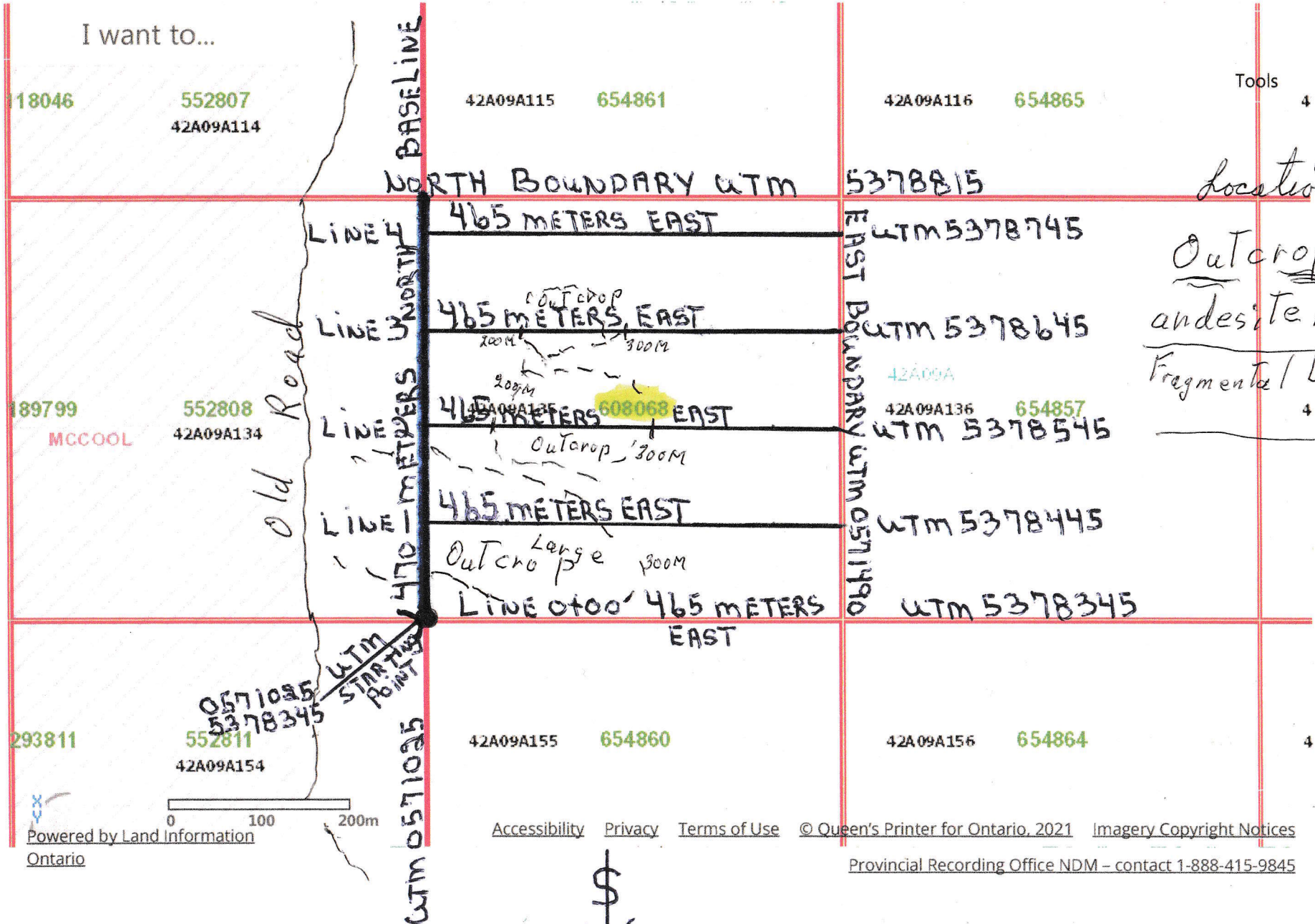
MCCOOL T.W.P

MCCOOL T.W.P



10.5° WEST Scale 1:50:00

Map Changed. Center latitude: 48.5560 degrees North. Center longitude: 80.0301 degrees West. Visible Features: 3 features visible on Non-Mining Land Tenure. 1 features visible on Provincial Grid Group. 1 features visible on Mining Division. 1 features visible on NDM Townships and Areas. 18 features visible on Provincial Grid Cell. Ministry of Northern Development, Mines, Natural Resources and Forestry



location of
Outcrops
andesite Basal
Fragmental Lava
+ Also

mccool T.W.P.



10.5° WEST SCALE 1:30:00

Map Changed. Center latitude: 48.5500 degrees North. Center longitude: 80.0317 degrees West. Visible Features: 2 features visible on Mining Lease. 4 features visible on Non-Mir and Tenure. 1 features visible on Provincial Grid Group. 1 features visible on Mining Division. 2 features visible on NDM Townships and Areas. 60 features visible on Provincial Grid Cell. 1 features visible on Indian Reserve, Resources and Forestry





*Used Gil Allaire Crew Cab
Truck*

Sent from my iPhone

Mc Cool Sup-Claim # 608068

Assessment Work Done

May 2/2022

Douglas Lalonde worked on Line 0+0 did flag line and compass line. There was a real large outcrop at about ⁵⁰ meter going east from Base line to about 200 meters east. The outcrop was massive andesite lava and fragmental breccia lava flow. No mineral was seen in the outcrop. No sample was taken.

Barron Bouchard work doing Lines ¹¹ # 2 North started at Base line. Out crop started at Base line and was about 200 meters wide on line ¹¹ and also on Line # 2 North the outcrop was about 200 meters wide also and about 20 meters in height it contain andesite lava and fragmental lava but no mineralization in the outcrop. No sample was taken for assaying. There was also a large outcrop at 200 m to 300 meters on L ¹¹ # 2 it was also andesite & fragmental lava with no mineral also. No sample taken for assaying either. This was done on compass & flag lines May 2/2022

Gillies Allaire dip compass and flag lines on
Line # 3 & #4 ^{North} Some large outcrop was found at
about 200M & 300meter section the outcrop was and #3
andesite basalt and fragmental lava. No mineralization
was found in outcrop no sample taken. On Line #4
there was no outcrops located on this line.

May 2/2022