

We are committed to providing [accessible customer service](#).

If you need accessible formats or communications supports, please [contact us](#).

Nous tenons à améliorer [l'accessibilité des services à la clientèle](#).

Si vous avez besoin de formats accessibles ou d'aide à la communication, veuillez [nous contacter](#).

REPORT OF WORK

on claims

553219, 553201, 553202

McCool Township

Larder Lake Mining Division

by: Douglas Lalonde

May 07, 2022

MCCOOL T.W.P.



10.5° WEST

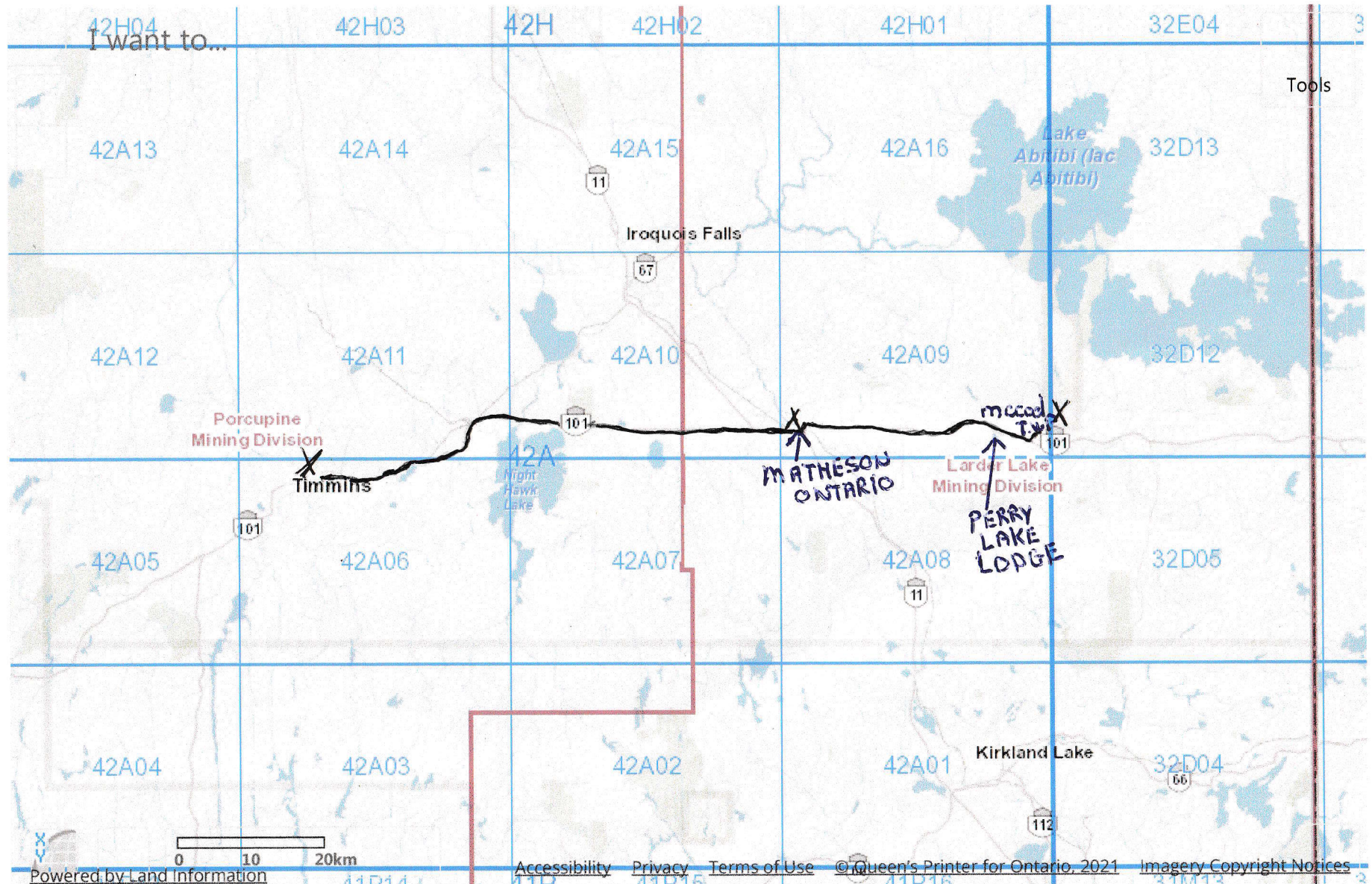
SCALE 1:10:00

Map Changed. Center latitude: 48.5066 degrees North. Center longitude: 80.1662 degrees West. Visible Features: 48 features visible on Provincial Grid 50K. 6 features visible on Provincial Grid 250K. 2 features visible on Mining Division.

MLAS Map Viewer

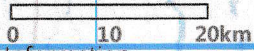
Ministry of Northern Development, Mines, Natural Resources and Forestry

français



I want to...

Tools



Powered by Land Information Ontario Accessibility Privacy Terms of Use © Queen's Printer for Ontario, 2021 Imagery Copyright Notices

Provincial Recording Office NDM - contact 1-888-415-9845

DISTANCE FROM TIMMINS TO MCCOOL T.W.P. TURN OFF 98 KILOMETERS

Each Way (200 KM Round Trip)

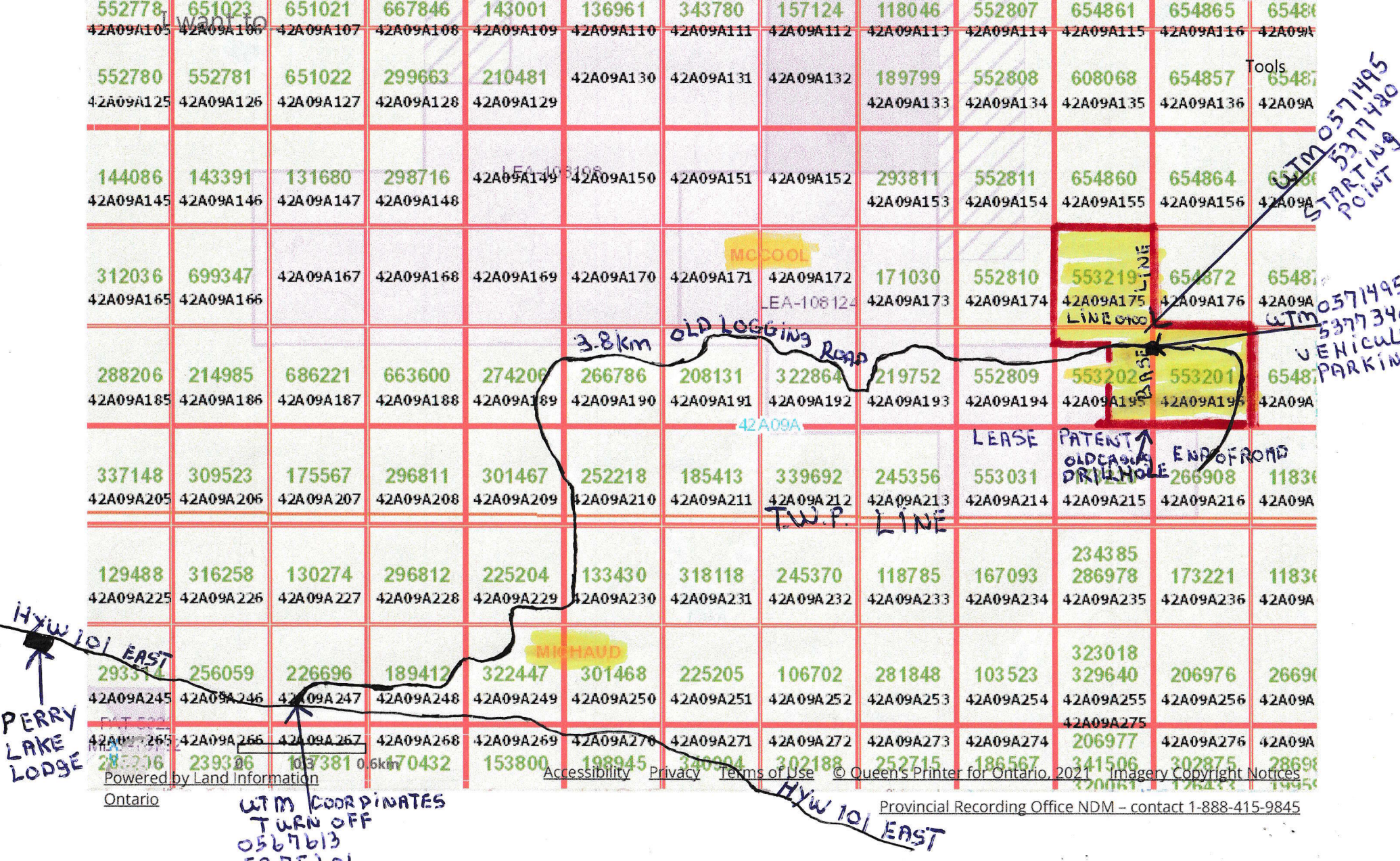
MCCOOL T.W.P



10.5° WEST SCALE 1:20:00

Map Changed. Center latitude: 48.5429 degrees North. Center longitude: 80.0442 degrees West. Visible Features: 12 features visible on Mining Patent. 1 features visible on Mining Lease of Occupation. 3 features visible on Mining Lease. 5 features visible on Non-Mining Land Tenure. 2 features visible on Provincial Grid Group. 1 features visible on Mining Division. 4 features visible on NDM, Townships and Areas. 162 features visible on Provincial Grid Cell. 1 features visible on Indian Reserve.

552778 42A09A105	651023 42A09A106	651021 42A09A107	667846 42A09A108	143001 42A09A109	136961 42A09A110	343780 42A09A111	157124 42A09A112	118046 42A09A113	552807 42A09A114	654861 42A09A115	654865 42A09A116	654861 42A09A117
552780 42A09A125	552781 42A09A126	651022 42A09A127	299663 42A09A128	210481 42A09A129	42A09A130	42A09A131	42A09A132	189799 42A09A133	552808 42A09A134	608068 42A09A135	654857 42A09A136	654857 42A09A137
144086 42A09A145	143391 42A09A146	131680 42A09A147	298716 42A09A148	42A09A149	42A09A150	42A09A151	42A09A152	293811 42A09A153	552811 42A09A154	654860 42A09A155	654864 42A09A156	654861 42A09A157
312036 42A09A165	699347 42A09A166	42A09A167	42A09A168	42A09A169	42A09A170	42A09A171	42A09A172	171030 42A09A173	552810 42A09A174	553219 42A09A175	654872 42A09A176	654872 42A09A177
288206 42A09A185	214985 42A09A186	686221 42A09A187	663600 42A09A188	274209 42A09A189	266786 42A09A190	208131 42A09A191	322864 42A09A192	219752 42A09A193	552809 42A09A194	553202 42A09A195	553201 42A09A196	654872 42A09A197
337148 42A09A205	309523 42A09A206	175567 42A09A207	296811 42A09A208	301467 42A09A209	252218 42A09A210	185413 42A09A211	339692 42A09A212	245356 42A09A213	553031 42A09A214	42A09A215	266908 42A09A216	118361 42A09A217
129488 42A09A225	316258 42A09A226	130274 42A09A227	296812 42A09A228	225204 42A09A229	133430 42A09A230	318118 42A09A231	245370 42A09A232	118785 42A09A233	167093 42A09A234	234385 42A09A235	286978 42A09A236	173221 42A09A237
293314 42A09A245	256059 42A09A246	226696 42A09A247	189412 42A09A248	322447 42A09A249	301468 42A09A250	225205 42A09A251	106702 42A09A252	281848 42A09A253	103523 42A09A254	323018 42A09A255	329640 42A09A256	206976 42A09A257
283216 42A09A265	239326 42A09A266	107381 42A09A267	170432 42A09A268	153800 42A09A269	198945 42A09A270	340904 42A09A271	302188 42A09A272	252715 42A09A273	186567 42A09A274	206977 42A09A275	341506 42A09A276	302875 42A09A277
283216 42A09A285	239326 42A09A286	107381 42A09A287	170432 42A09A288	153800 42A09A289	198945 42A09A290	340904 42A09A291	302188 42A09A292	252715 42A09A293	186567 42A09A294	206977 42A09A295	341506 42A09A296	302875 42A09A297



HYW 101 EAST
PERRY LAKE LODGE

UTM COORDINATES
TURN OFF
0567613
5375601

UTM 0571495
5377420
STARTING POINT
UTM 0571495
5377340
VEHICLE PARKING

HYW 101 EAST

No results found.

mccool T.W.P

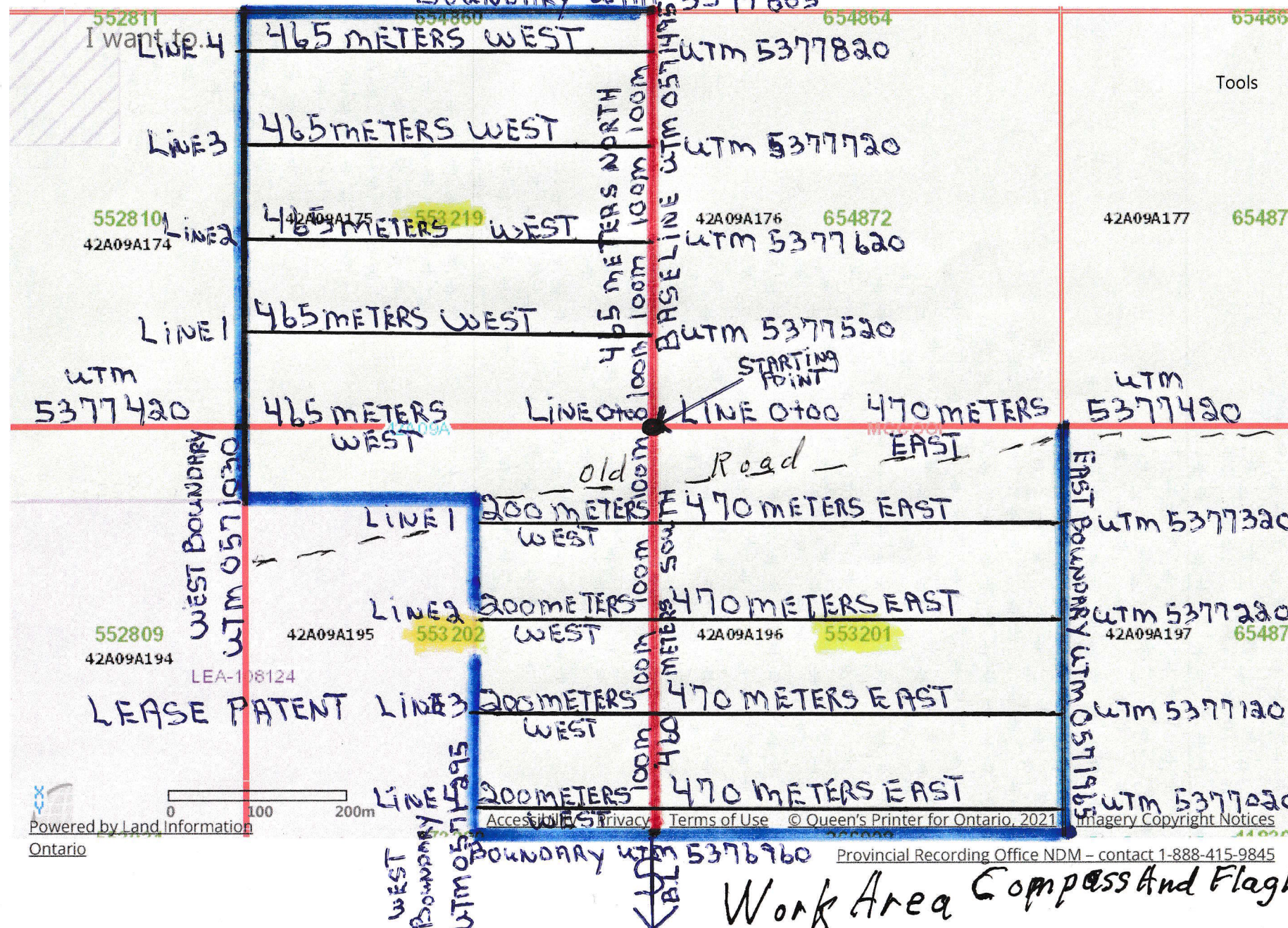
10.5° WEST Scale 1:50:00



MLAS Map Viewer

Ministry of Northern Development, Mines, Natural Resources and Forestry

français



Powered by Land Information Ontario

Accessibility Privacy Terms of Use © Queen's Printer for Ontario, 2021 Imagery Copyright Notices

mccool T.W.P

10.5° WEST Scale 1:50:00

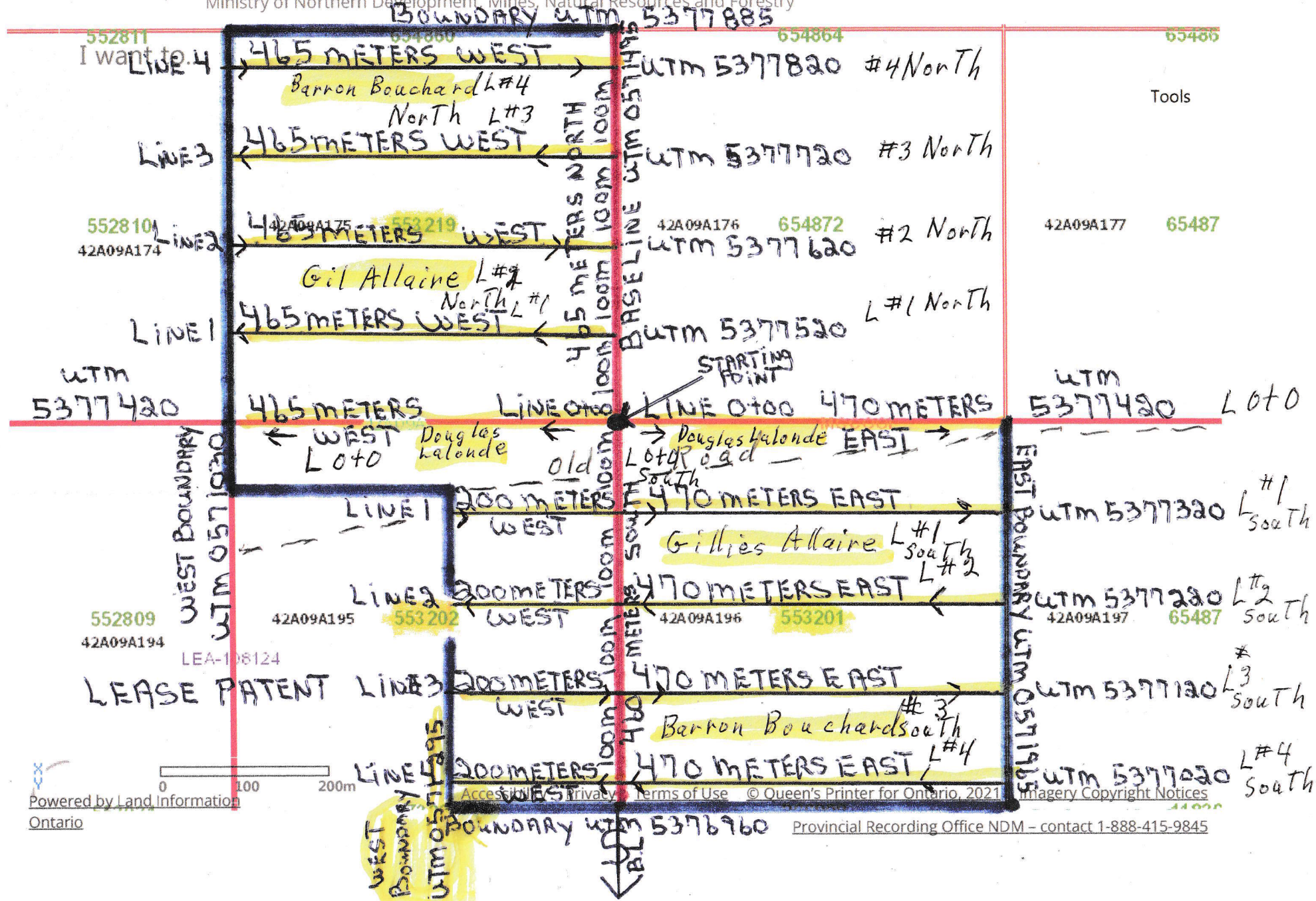
No results found.



MLAS Map Viewer

Ministry of Northern Development, Mines, Natural Resources and Forestry

français



Tools

552811

5528101

552809

552808

Boundary UTM 5377885

BASELINE UTM 057195

WEST BOUNDARY UTM 0571030

EAST BOUNDARY UTM 0571965

I want to LINE 4

LINE 3

LINE 2

LINE 1

LINE 0+00

LINE 0+00

LINE 1

LINE 2

LINE 3

LINE 4

LEASE PATENT

LEA-108124

BOUNDARY UTM 5376960

UTM 5377420 Lot 0

UTM 5377320 L#1 South

UTM 5377220 L#2 South

UTM 5377120 L#3 South

UTM 5377020 L#4 South

STARTING POINT

Douglas Kalonde

Douglas Kalonde

old Lot 0+00 road

Gillies Allaire L#1 South L#2

Barron Bouchard South L#3 L#4

Powered by Land Information Ontario

Access Privacy Terms of Use © Queen's Printer for Ontario, 2021 Imagery Copyright Notices

Provincial Recording Office NDM - contact 1-888-415-9845



Found Amox #2 Drill Hole

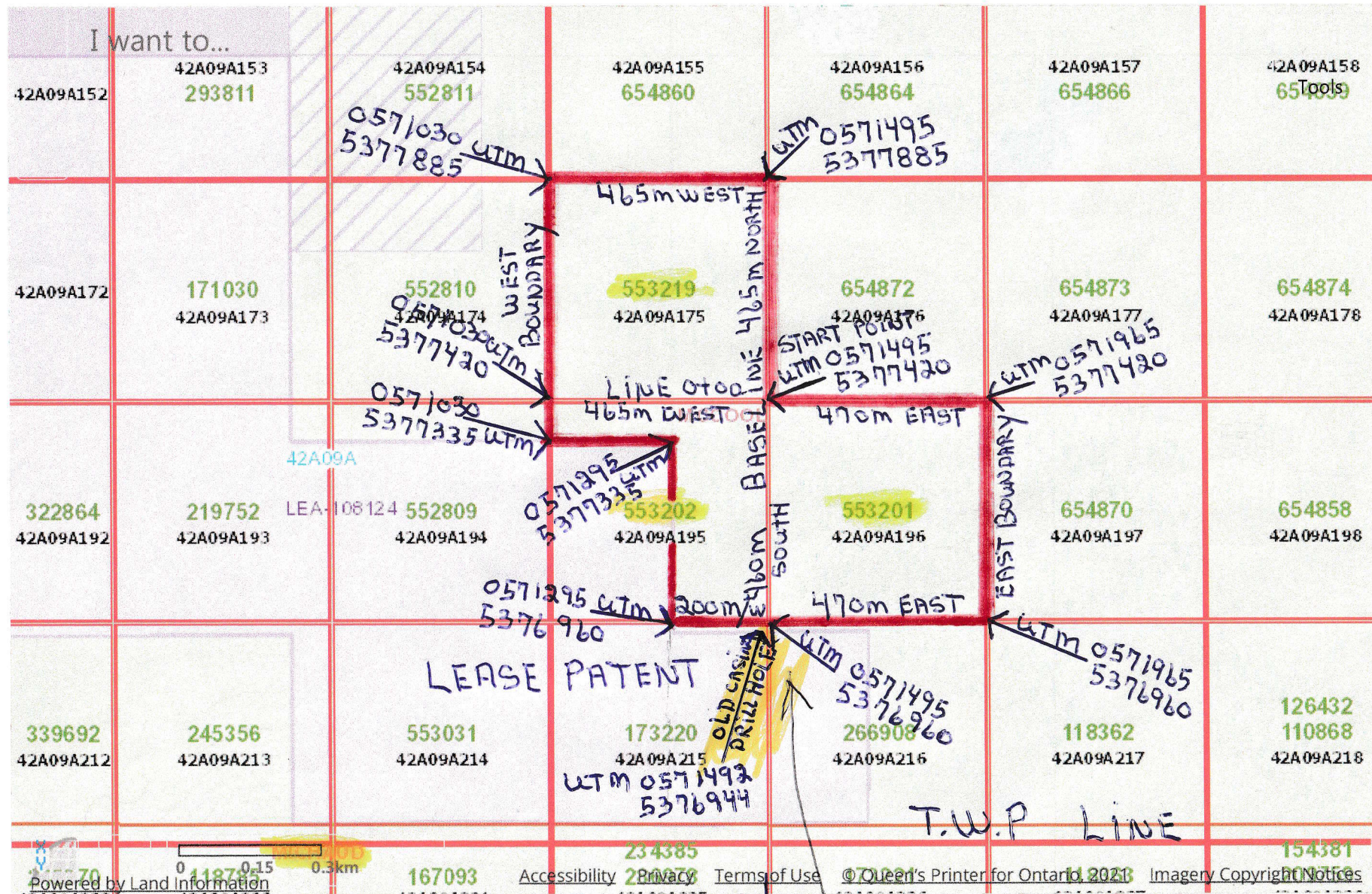
Sent from my iPhone

MCCOOL T.W.P.

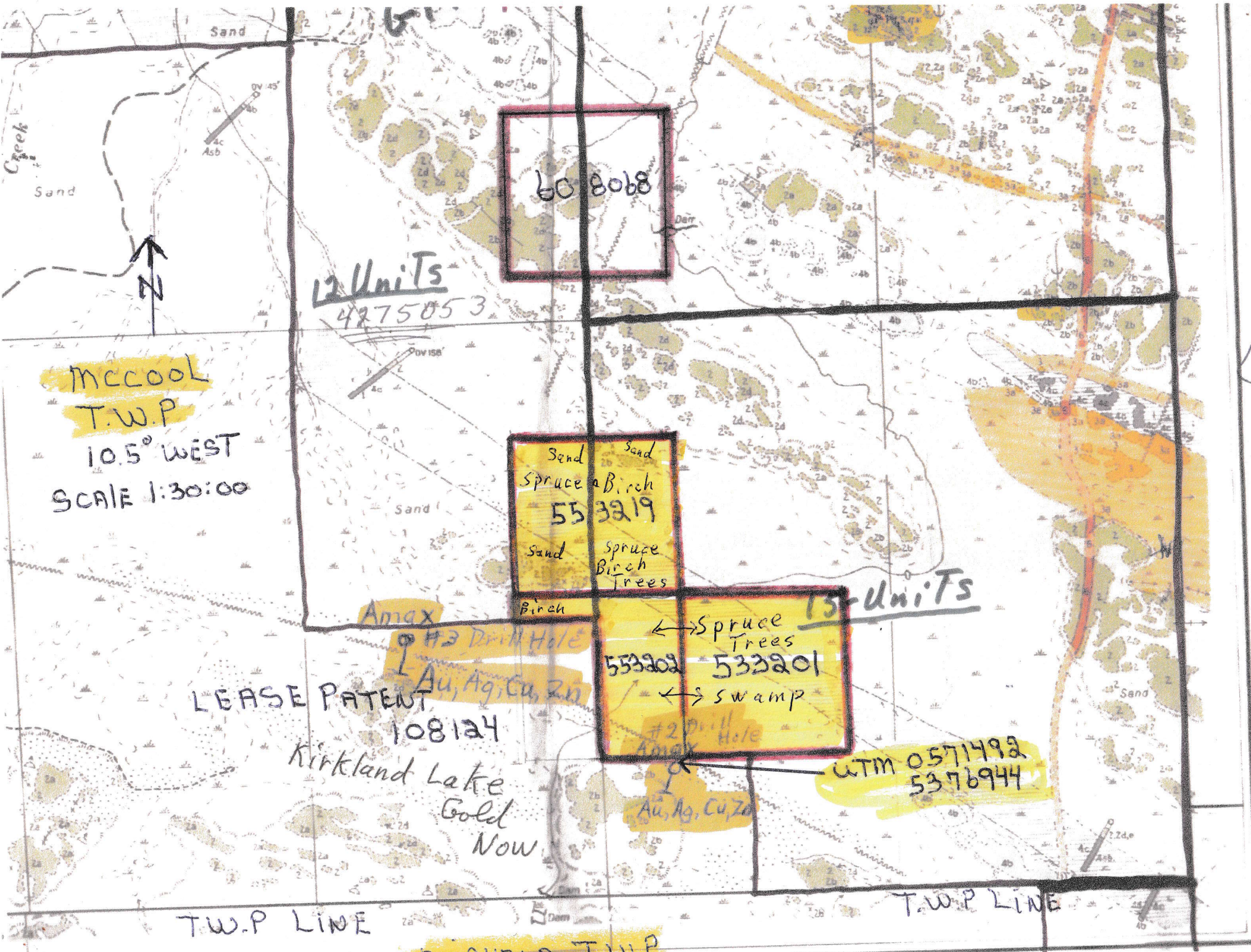


10.5° WEST SCALE 1:30:00

Map Changed. Center latitude: 48.5448 degrees North. Center longitude: 80.0255 degrees West. Visible Features: 3 features visible on Mining Patent. 1 features visible on Mining L 3 features visible on Non-Mining Land Tenure. 2 features visible on Provincial Grid Group. 1 features visible on Mining Division. 4 features visible on NDM Township and Areas 50 features visible on Provincial Grid Cell 2 features visible on Indian Reserve.



Old Amax Drill Casing



60 8068

12 Units
4275053

Sand Sand
Spruce Birch
55 3219
Sand Spruce
Birch
Trees
Birch

← Spruce Trees
553202 532201
→ Swamp
#2 Drill Hole
Amox
Au, Ag, Cu, Zn

13 Units

W.T.M. 0571492
5376944

MCCOOL
T.W.P.
10.5° WEST
SCALE 1:30:00

LEASE PATENT
108124
Kirkland Lake
Gold
Now

T.W.P. LINE

T.W.P. LINE

... T.W.P.

2 A

Found Drill Casing # 2 Amax

Found Drill Casing

Kirkland Lake Gold Property Now an Amax Drill Hole Claim

Lalonde Property Claim #4275052

DRILLHOLE SUMMARY										
Map Drilling Location Number	Company Name	Company Drillhole Number	Date Drilled	Bearing Azimuth	Initial Dip of Hole	Thickness of Overburden *	Total Length of Hole	Mineralization Noted in Log	Assay Data Included for	
1	Amax Minerals Expl. "McCool 2"	839-16-1	11/79	200°	-50°	68'	444'	po, cp, py, gf	-	
2	Amax Minerals Expl. "McCool 7"	839-28-1	11/79	200°	-50°	120'	560'	gf, qcv, po, cp	Au, Ag, Cu, Zn	
3	"	839-28-2	11/79	200°	-50°	134'	486'	gf, py, qcv, po	Au, Ag, Cu, Zn	
4	Amax Minerals Expl. "McCool 8"	839-29-11	08/80	210°	-50°	177'	430'	gf, py	-	
5	Area Mines Ltd.	315-1	07/63	200°	-45°	17'	280'	py, po, qcv, cp hem, mag, gf	-	
6	Betts Mining Synd. Ltd. "Lindsay Property"	B-4	09/54	0°	-60°	80'	666'	mag, serp, qcv talc	-	
7	Bonnacord Expl. Ltd.	B73-A1	08/73	57°	-70°	20'	357'	mag, py, po, cp, qcv	Au, Cu	
8	"	B73-B1	08/73	201°	-50°	169'	169'	No Bedrock		
9	"	B73-B2	09/73	201°	-70°	170'	421'	py, cp, qcv, po	Au, Cu, Zn 12' @ 0.02 oz Au/t	
10	Camrose Gold & Metal Mining Co.	1	09/50	180°	-45°	22'	835'	serp, mag, asb	asb	
11	"	2	10/50	190°	-45°	20'	736'	asb	asb	
12	"	3	11/50	180°	-45°	67'	894'	asb	asb	

GDIF FORM NO. 3

Map Drilling Location Number	Company Name	Company Drillhole Number	Date Drilled	Bearing Azimuth	Initial Dip of Hole	Thickness of Overburden *	Total Length of Hole	Mineralization Noted in Log	Assay Data Included for
13	Camrose Gold & Metal	4	01/51	180°	50°	22'	736'		

10 McCool Township

McCool Townships



*Used Gil Allaire Crew Cab
Truck*

Sent from my iPhone

Worked on 3 claims in Mc Cool Twp

553219, # 553201, # 553202

May 5/2022

Douglas Lalonde Start at base line; Prospecting
Worked on Claim # 553201 did compass and flag
line 0+0 going east for 470 M No outcrop found
sand & swamp areas. Per day wages \$300.00
Some Pine & spruce trees food

May 5/2022 Prospecting

Lillis Allaire Worked compass & flag lines #1 & #2
east and west of base line on claim # 553201, 553202
did 670 M on line #1 & 670 M on line #2 east and
west of baseline. No outcrop found sand & swamp
area some jack pine and spruce trees free birch trees also.
Per day wages \$300.00
food

May 5/2022 Prospecting

Barron Bouchard worked compass & flag lines #3 & #4 east
and west of base line. On claim 553201, 553202
did 670 M on line #3 and 670 M on line #4 east to west
No outcrops was located on either lines was spruce
jack pine some birch trees. Ground was sand & swamp.
But a diamond drill casing was located on line #4
Which was a max #2 drill holes and the UTM
coordinates are 0571495-5376960. The drill hole
was drilled going south word at 50°. Lucky find.

Per day Wages \$300.00
food

Total May 5/2022 = \$900.

May 6/2022 Prospecting

Douglas Lalonde worked on compass and flag line 0+0 going west from Base line on claim #553219 line was 465M no outcrop was located most of the line was sand and some swamp area trees was small Jackpine and some spruce trees also.

May 6/2022 Prospecting Wages per day \$300.00
food

Gillis Allaire worked doing compass & flag lines #1 & #2 West of Base line on claim #553219 No outcrops found on either line. The area is sand and some swamp areas. With small Jackpine and spruce trees. Two lines 465M long each line

Wages per day \$300.00
food

May 6/2022 Prospecting

Barron Bouchard work doing compass and flag lines #3 & #4 west of baseline on Claim #5532119 No outcrops was located. Two line 465M long each line The area is sand & some swamp areas. There is small Jackpine and some spruce trees. End of the project.

Wages per day \$300.00
food

May 6/2022

Total Wages = \$900.