

We are committed to providing [accessible customer service](#).

If you need accessible formats or communications supports, please [contact us](#).

Nous tenons à améliorer [l'accessibilité des services à la clientèle](#).

Si vous avez besoin de formats accessibles ou d'aide à la communication, veuillez [nous contacter](#).

TIGER GOLD EXPLORATION CORPORATION

Abstract

CXS was contracted to perform a magnetometer survey over a portion of the Bradette Property. The crew accessed the site on April 19, 2022.

A total length of 16.875 kilometres was covered with 703 magnetometer and VLF EM samples taken at a 25 meter interval. Historic airborne geophysical signatures were targeted in two areas. The first area identified a +200nT magnetic bullseye anomaly. The second identified a magnetic trend, however conditions didn't allow for the survey to extend over the EM target.

Tiger Gold Exploration Corporation

**Q3007– Bradette Property
Magnetometer and VLF EM Surveys**

C Jason Ploeger, P.Geo.

May 31, 2022

TABLE OF CONTENTS

1.	SUMMARY	4
1.1	PROJECT NAME.....	4
1.2	CLIENT	4
1.3	OVERVIEW	4
1.4	OBJECTIVE.....	4
1.5	SURVEY & PHYSICAL ACTIVITIES UNDERTAKEN.....	4
1.6	SUMMARY OF RESULTS, CONCLUSIONS & RECOMMENDATIONS.....	5
1.7	CO-ORDINATE SYSTEM	5
2.	SURVEY LOCATION DETAILS	6
2.1	LOCATION	6
2.2	ACCESS.....	6
2.3	MINING CLAIMS	6
2.4	PROPERTY HISTORY	9
2.5	GENERAL REGIONAL/LOCAL GEOLOGICAL SETTINGS.....	12
2.6	TARGET OF INTEREST	12
3.	SURVEY WORK UNDERTAKEN.....	13
3.1	SUMMARY	13
3.2	SURVEY GRID	13
3.3	SURVEY LOG.....	13
3.4	PERSONNEL	14
3.5	SAFETY	14
3.6	SURVEY SPECIFICATIONS.....	14
4.	OVERVIEW OF SURVEY RESULTS.....	16
4.1	SUMMARY	16

LIST OF APPENDICES

APPENDIX A	STATEMENT OF QUALIFICATIONS
APPENDIX B	EQUIPMENT SPECIFICATIONS
APPENDIX C	REFERENCES
APPENDIX D	DIGITAL DATA
APPENDIX E	LIST OF MAPS (IN MAP POCKET)

LIST OF TABLES AND FIGURES

Figure 1: Location of the Bradette Property (Map data ©2022 Google).....	6
Figure 2: Claim Map with the Bradette Property West Target Traverses.....	8
Figure 3: Claim Map with the Bradette Property North West Target Traverses....	9

Figure 4: Magnetometer Plan Map of West Target on Google Earth.....	16
Figure 5: VLF Fraser Filter NAA Map on Google Earth	17
Figure 6: Magnetometer Plan Map of West Target on Google Earth.....	18
Figure 7: VLF Fraser Filter Map on Google Earth.....	19
Figure 8: Ground Magnetometer on Georeferenced Sunburst Magnetometer with VLF Target Map	20
Table 1: Survey and Physical Activity Details	4
Table 2: Mining Land Cells Information	7
Table 1: Survey Log	14

1. SUMMARY

1.1 PROJECT NAME

This project is known as the **Bradette Property**.

1.2 CLIENT

Tiger Gold Exploration Corporation

103 Government Road.
Kirkland Lake, Ontario
P2N 1A9

1.3 OVERVIEW

CXS was contracted to perform a magnetometer survey over a portion of the Bradette Property. The crew accessed the site on April 19, 2022.

A total length of 16.875 kilometres was covered with 703 magnetometer and VLF EM samples taken at a 25 meter interval. Historic airborne geophysical signatures were targeted in two areas. The first area identified a +200nT magnetic bullseye anomaly. The second identified a magnetic trend, however conditions didn't allow for the survey to extend over the EM target.

1.4 OBJECTIVE

The objective of the magnetometer and VLF EM survey was to explore the area for magnetic and conductive signatures.

1.5 SURVEY & PHYSICAL ACTIVITIES UNDERTAKEN

Survey/Physical Activity	Dates	Total Days in Field	Total Line Kilometers
Magnetometer and VLF EM	April 19 to April 25, 2022	3	16.875

Table 1: Survey and Physical Activity Details

1.6 SUMMARY OF RESULTS, CONCLUSIONS & RECOMMENDATIONS

CXS was contracted to perform a magnetometer survey over a portion of the Bradette Property. The crew accessed the site on April 19, 2022.

A total length of 16.875 kilometres was covered with 703 magnetometer and VLF EM samples taken at a 25 meter interval. Historic airborne geophysical signatures were targeted in two areas. The first area identified a +200nT magnetic bullseye anomaly. The second identified a magnetic trend, however conditions didn't allow for the survey to extend over the EM target.

1.7 CO-ORDINATE SYSTEM

Projection: UTM zone 17N

Datum: NAD83

UTM Coordinates near center of area: 604280 Easting and 5490684 Northing

2. SURVEY LOCATION DETAILS

2.1 LOCATION

The Bradette Property is located approximately 165km north of Larder Lake, Ontario.

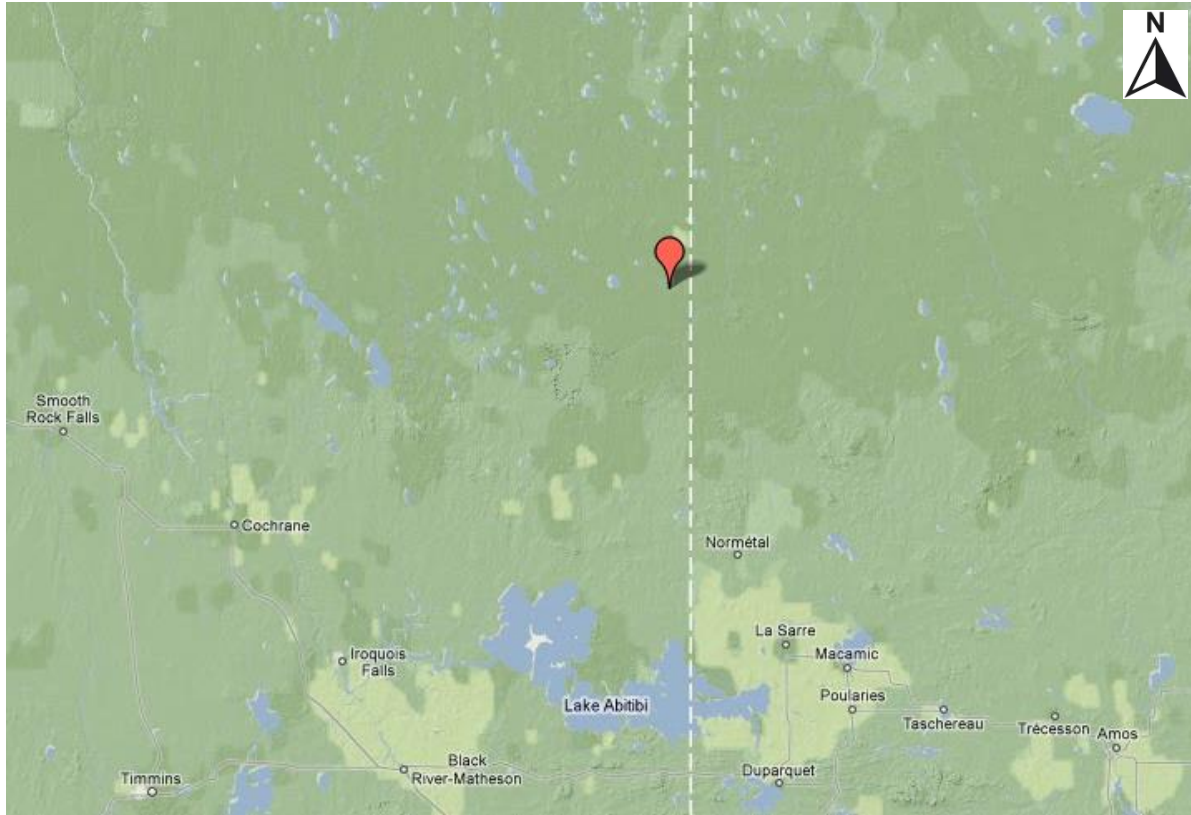


Figure 1: Location of the Bradette Property (Map data ©2022 Google)

2.2 ACCESS

The Bradette property was accessed by helicopter from the Expedition Helicopter Base in Cochrane, Ontario.

2.3 MINING CLAIMS

The survey area covered a portion of mining claims located in Kingroy Lake Area, within the Porcupine Mining Division. The property is owned by Tiger Gold Exploration Corporation. The details of these claims are in the table below.

Cell Number	Cell ID	Ownership of Land	Township
662617	32E12G328	Tiger Gold Exploration Corporation	Kingroy Lake
662619	32E12G329	Tiger Gold Exploration Corporation	Kingroy Lake
662618	32E12G348	Tiger Gold Exploration Corporation	Kingroy Lake
662620	32E12G349	Tiger Gold Exploration Corporation	Kingroy Lake
662615	32E12G368	Tiger Gold Exploration Corporation	Kingroy Lake
662616	32E12G349	Tiger Gold Exploration Corporation	Kingroy Lake
662604	32E12G380	Tiger Gold Exploration Corporation	Kingroy Lake
662603	32E12G400	Tiger Gold Exploration Corporation	Kingroy Lake
662602	32E12B020	Tiger Gold Exploration Corporation	Kingroy Lake

Table 2: Mining Land Cells Information

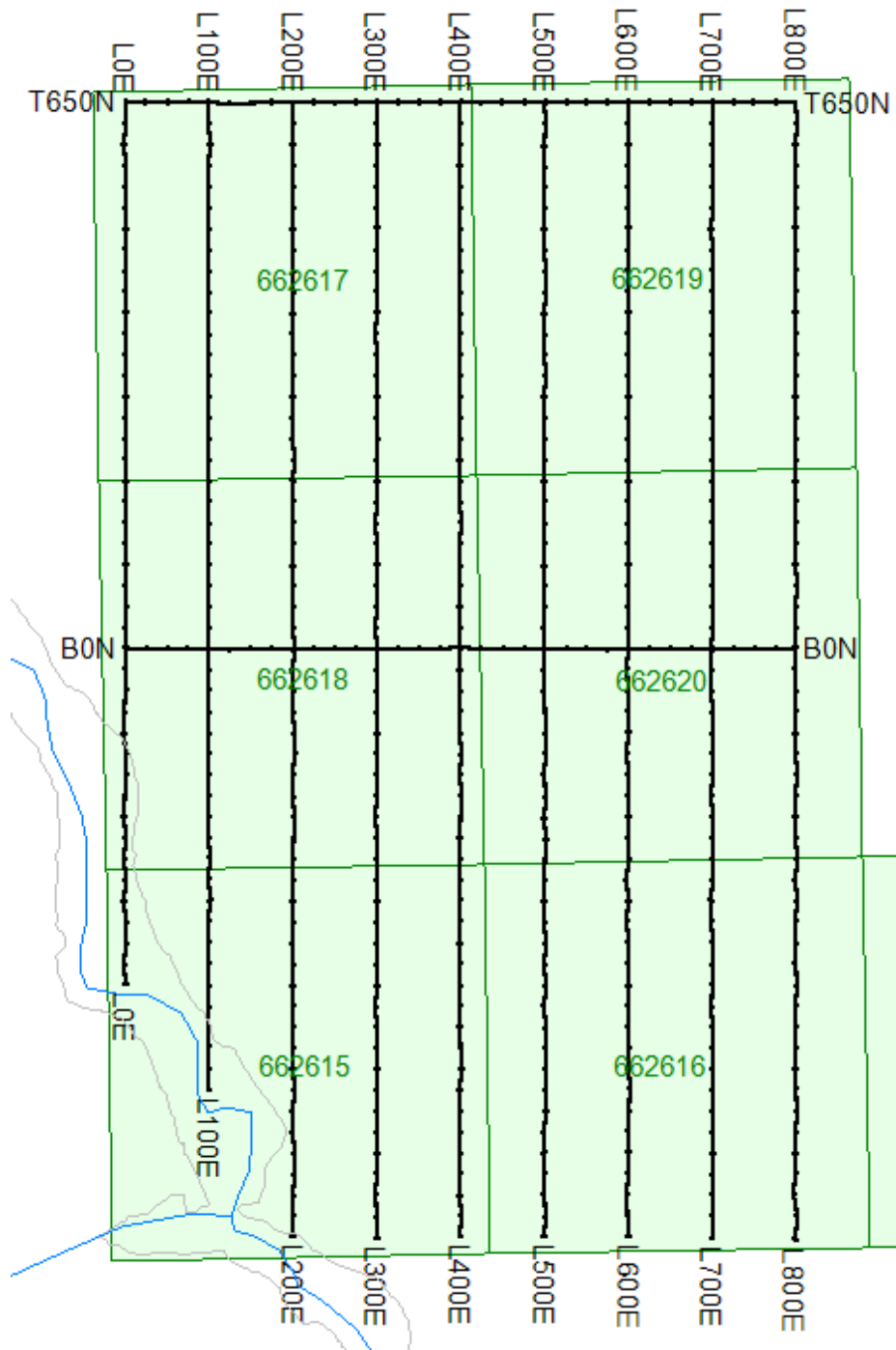


Figure 2: Claim Map with the Bradette Property West Target Traverses

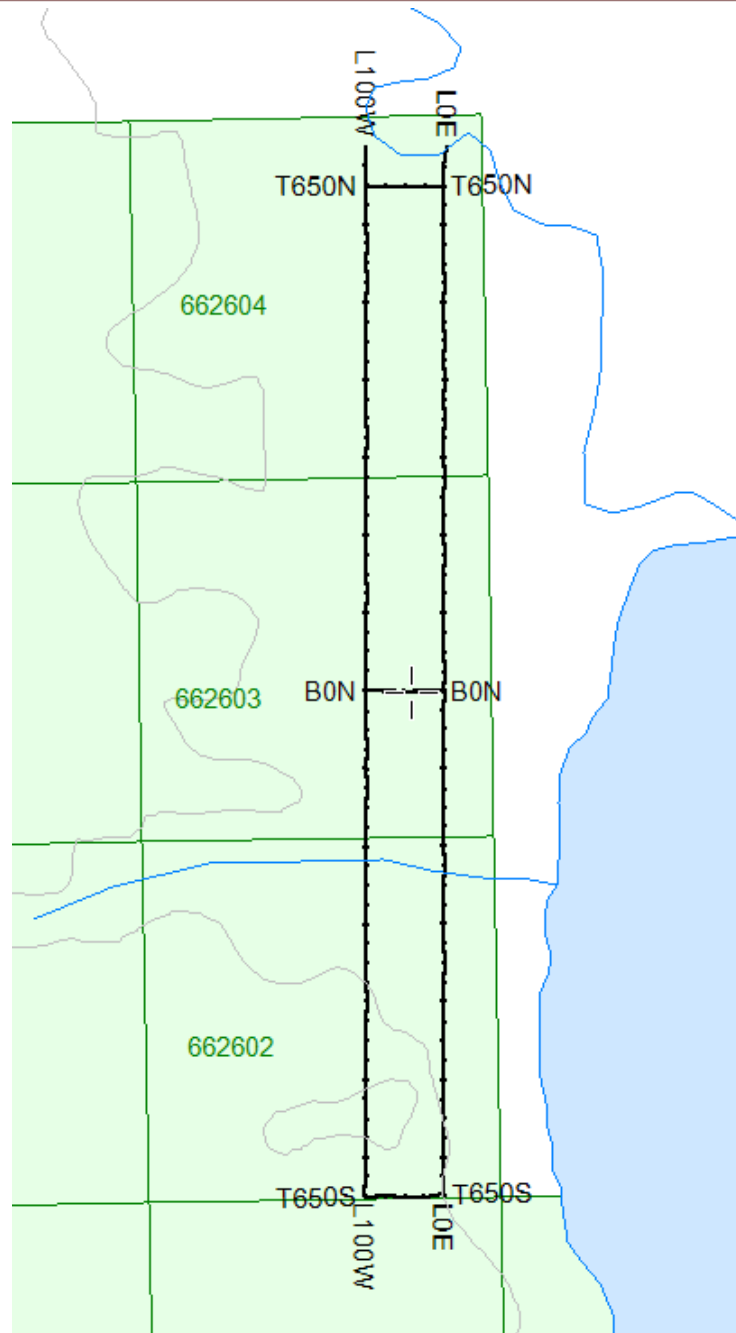


Figure 3: Claim Map with the Bradette Property Northwest Target Traverses

2.4 PROPERTY HISTORY

Significant historical exploration has been carried out over the years all over the survey area. The following list describes details of the previous geoscience work which was collected by the Mines and Minerals division and provided by OGSEarth (MNDM & OGSEarth, 2022).

- **1965: Onshore Petroleums Ltd (File 32E12SE0963)**
Diamond Drilling
Three diamond drill holes were reported for a total of 2101 feet.
- **1965: Onshore Petroleums Ltd (File 32E12SE0060)**
Ground EM and Magnetic Geophysical Surveys
Traverses using claim lines and pacing were performed. These lines were paced at 100-foot intervals.
- **1980: Hudbay Mining Ltd. (File 32E12NE0001)**
Airborne EM Geophysical Surveys
In 1980 Hudbay flew and electromagnetic survey.
- **1981: Noranda Exploration Co (File 32E12SE0050)**
Ground EM and Magnetic Geophysical Surveys
Picket lines 400' apart with station intervals of 100' were cut and chained. Magnetic readings were taken at each of the 100' stations. Approximately 2350 stations were read between the period of January 15 and February 9, 1981. 1913 in-phase and 1913 out-of-phase HEM readings were taken concurrently with magnetic readings.
- **1985: Noranda Exploration Co (File 32E12SE0050)**
Ground EM and Magnetic Geophysical Surveys
A total of 60.62 kilometres of grid and control lines were cut and chained between February and March 1984. An IP survey which consisted of 1083 readings over 26.10 km of grid was performed from April 1 to April 15, 1984. A magnetic survey which consisted of 2098 readings over 51.55 km of grid was performed from February 23 to March 2, 1985.
- **1986: Dome Exploration (Canada) Limited (File 32E12SE9999)**
Airborne VLF Electromagnetic and Magnetic Geophysical Survey
A total of 403 km of survey was flown with a total field magnetometer and VLF system in May 1986 for Dome Exploration Limited. Total magnetic field contours indicated the presence of several narrow magnetic highs, characterising banded iron formations.
- **1987: Sunburst Exploration Limited (File 32E12NE0981)**
Airborne VLF Electromagnetic and Magnetic Geophysical Survey
In 1987 Sunburst flew an airborne VLF and Magnetometer survey.
- **1987: Perrex Resources Inc (File 32E12NE0982)**
Airborne VLF Electromagnetic and Magnetic Geophysical Survey
On November 19, 1986 airborne geophysical surveys were carried out on the properties of Perrex Resources Ltd. under Bradette and Kingroy Townships, Ontario. Magnetic and VLF-EM data were collected by the airborne division of

-
- H. Ferderber Geophysics Ltd. A total of 1164 miles of data were collected. Magnetic highs associated with iron formations were observed.
- **1987: Noranda Exploration Co (File 32E12SE0065)**
Airborne Magnetic Geophysical Survey
From July 16, 1973 to July 22, 1973, an aeromagnetic survey was performed by Questor Surveys Limited for Noranda Exploration Company Limited. A total of 1485 line-miles was flown over the Burntbush River area of Northern Ontario. The responses due to iron formations dominated the magnetic data.
 - **1989: Aurogin Resources (File 32E12NE0980)**
Diamond Drilling
In 1989 Aurogin drilled one drill hole totalling 111.5 m.
 - **1989: Perrex Resources Inc (File 32E05NE0919)**
Airborne VLF Electromagnetic, Magnetic Geophysical Survey and Geological Interpretation
On March 21, 1989 an airborne geophysical survey was carried out on a property owned by Perrex Resources Ltd. in Bradette Township, Ontario. Magnetic and VLF-EM data were collected by the airborne division of H. Ferderber Geophysics Ltd. and a total of 94.35 miles of data were collected. The VLF-electromagnetic survey outlined a conductive zone which may be a shear zone or a metallic deposit containing gold.
 - **1990: Teck Corporation Ltd (Files 32E12SE0011 and 32E12SE0013)**
Diamond Drilling
Two diamond drill holes were reported for a total of 327 m.
 - **1990: Perron Gold Corp (Files 32E12SE0012 and 32E12SE0016)**
Airborne VLF Electromagnetic, Geological Mapping and Interpretation
A geophysical grid, at a 400-foot line spacing, was established by Perron over the whole Bradette property. A geological survey was performed in the summer of 1989. A VLF-EM survey using a Geonics EM16 Unit, was conducted in January 1990. The survey was performed only on the eastern half of the grid.
 - **2011-2019: Tiger Gold Exploration Corporation. (Files 20000007298, 20000006596, 20000017025, 20000014591 and 20000014590)**
Magnetic and VLF Geophysical Surveys
In 2011 through 2019, Tiger Gold contracted CXS to perform a series of no-grid magnetic and VLF EM surveys. These surveys were performed along north-south traverse lines spaced at 100 m. Magnetic and VLF EM samples were taken every 25 m along these traverses.
 - **2014-2015: Tiger Gold Exploration Corporation. (Files 20000008773 and 20000009176)**

Re-cutting of Claim Lines

In 2014 and 2015, Tiger Gold contracted CXS to locate and re-establish the claim boundaries for the Bradette Property.

2.5 GENERAL REGIONAL/LOCAL GEOLOGICAL SETTINGS

The property is located along the Casa Berardi Deformation Zone in the Abitibi Greenstone Belt of the Superior Province of the Canadian Shield. The Abitibi Greenstone Belt extends for nearly 350 miles in a west-east direction from Timmins to Chibougamau and is host to a variety of precious and base metal deposits.

The Northern Abitibi is an Archean supracrustal complex composed of moderate to highly deformed rocks of meta-volcanic rocks and meta-sedimentary assemblies, typically of the greenstone facies. The meta-volcanic rocks observed are predominantly massive or pillowed flows with minor feldspar interflow. The meta-sedimentary rocks typically occur as interbedded greywacke, siltstone, argillite and conglomerates. Banded iron formations are interbedded between volcanic flows. The metamorphic rocks are bounded by granitic rocks to the north, west, and south and are intruded by several large granitic batholiths. There are numerous late Precambrian diabase dykes which cut the rocks in the belt. The rocks generally strike east-west, have vertical dips and are highly folded, faulted and deformed. There is a poor geological understanding of the Abitibi Greenstone Belt because of both, the widespread scattering of outcrops and the complex structure of the belt.

Property Geology:

Geological mapping of the property is difficult due to the lack of outcrops. Therefore, geological interpretation is mainly based on drill cores. Volcanic rocks vary from mafic to intermediate and massive to pillow metavolcanic rocks with minor amounts of intermediate to felsic metavolcanic rocks. The volcanic rocks are typically intruded by quartz-feldspar porphyry dykes. The metasedimentary rocks are mainly biotite-rich meta-sediments, greywacke, conglomerate and magnetite-bearing iron formation. There are several mafic to intermediate dykes that intrude both the volcanic and sedimentary rocks. Late diabase dykes intrude all rock types mentioned above.

2.6 TARGET OF INTEREST

Targeting was based on historic information. The western most survey area represents a historic bullseye airborne magnetometer signature. The northwest target represents a historic airborne VLF EM signature.

3. SURVEY WORK UNDERTAKEN

3.1 SUMMARY

CXS was contracted to perform a magnetometer and VLF EM surveys over a portion of the Bradette Property. The crew accessed the site on April 19th and April 25th, 2022.

A total length of 16.875 kilometres was covered with 703 magnetometer and VLF EM samples taken at a 25 meter interval. Historic airborne geophysical signatures were targeted in two areas. The first area identified a +200nT magnetic bullseye anomaly. The second identified a magnetic trend, however conditions didn't allow for the survey to extend over the EM target.

3.2 SURVEY GRID

The traversed lines were established using a GPS in conjunction with the execution of the survey. The GPS operator would establish sample locations while remaining approximately 25m in front of the magnetometer operator. GPS waypoints and magnetic samples were taken every 25m along these controlled traverses. The GPS used was a Garmin GPSMAP 62s with an external antenna for added accuracy.

3.3 SURVEY LOG

Date	Description	Line	Min Extent	Max Extent	Total Survey (m)
April 19, 2022	Mobilize by helicopter to survey area. Problem with helicopter prevents landing.	-	-	-	-
April 20, 2022	Mobilize by helicopter to survey area, begin magnetometer survey over West Target.	0E	400S	650N	1050
		100E	525S	0S	525
		200E	700S	0S	700
		300E	0N	650N	650
		400E	0N	650N	650
		500E	700S	650N	1350
		600E	700S	650N	1350
		700E	700S	650N	1350
		800E	700S	650N	1350
		700S	200E	800E	600
		0N	0E	800E	800
		650N	0E	800E	800

Date	Description	Line	Min Extent	Max Extent	Total Survey (m)
April 25, 2022	Mobilize by helicopter to survey area, complete magnetometer survey over West Target and Begin Magnetometer survey of Northwest target.	100E	0N	650N	650
		200E	0N	650N	650
		300E	700S	0N	700
		400E	700S	0N	700
	Begin magnetometer and VLF EM survey over northwest target.	100W	650S	700N	1350
		0E	650S	700N	1350
		650S	100W	0E	100
		0N	100W	0E	100
		650N	100W	0E	100

Table 3: Survey Log

3.4 PERSONNEL

Claudia Moraga of Dobie, Ontario along with Giancarlo Smith of Virginiatown, Ontario conducted all the magnetic data collection with Bruce Lavalley of Dobie, Ontario and Cameron Hansen of Larder Lake, Ontario being responsible for GPS control and waypoint collection.

3.5 SAFETY

Canadian Exploration Services prides itself in creating and maintaining a safe work environment for its employees. Each crew member is briefed on the jobsite location, equipment safety, standard operating procedures along with our health and safety manual. An emergency response plan is generated relating to the specific job and with the jobsite predominantly in the field, which is unpredictable, morning safety briefings are essential. Topics are generally chosen based off jobsite characteristics of the area, time of year and crew experience.

3.6 SURVEY SPECIFICATIONS

The survey was conducted with a GSM-19 v7 Overhauser magnetometer/VLF with a second GSM-19 magnetometer for a base station mode for diurnal correction.

A total of 16.875 line kilometers of magnetometer and VLF EM surveys was read over the Bradette Property between April 19th and 25th, 2022. This consisted of 703

magnetometer and VLF EM samples taken at a 25 meter sample interval.

4. OVERVIEW OF SURVEY RESULTS

4.1 SUMMARY

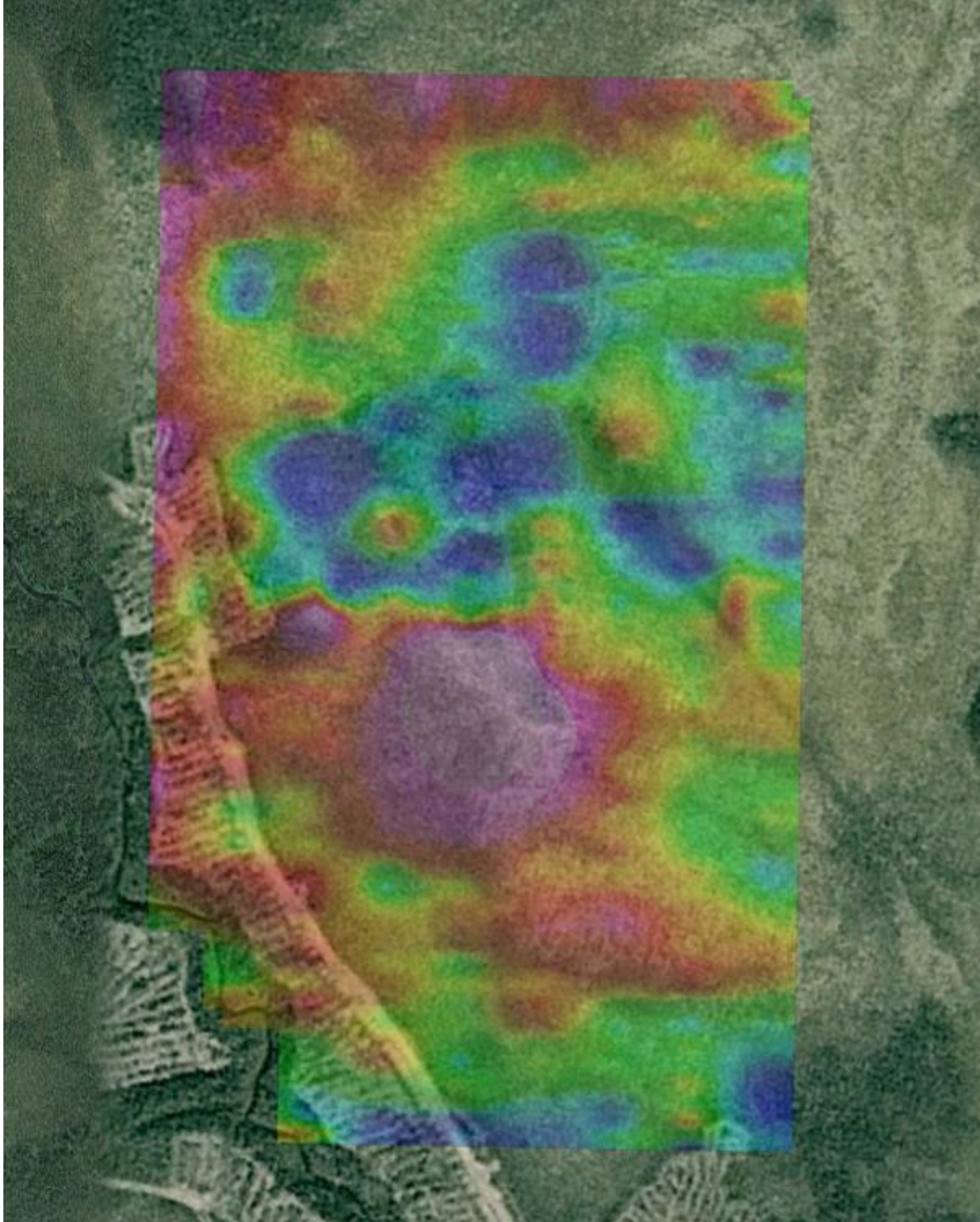


Figure 4: Magnetometer Plan Map of West Target on Google Earth

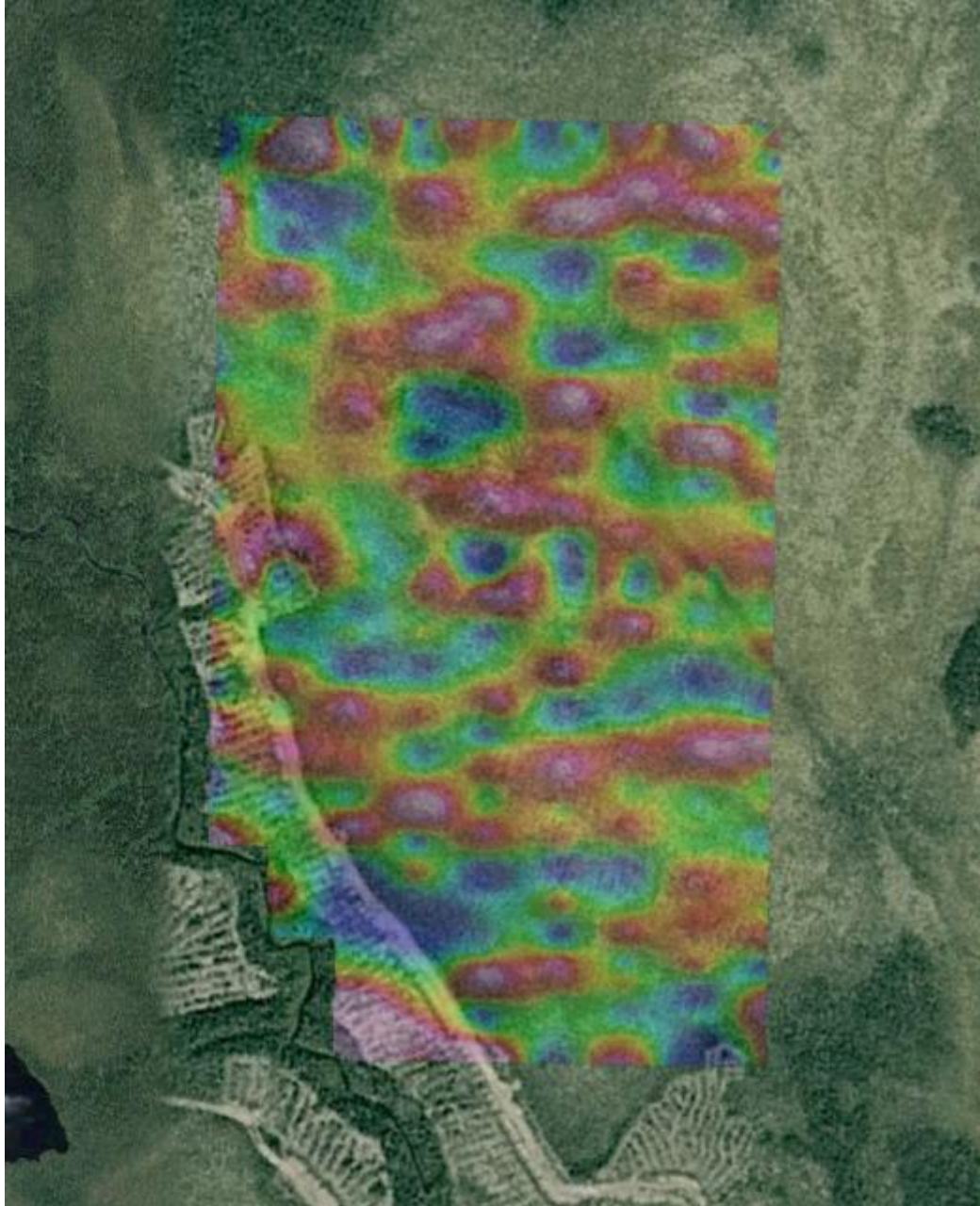


Figure 5: VLF Fraser Filter NAA Map on Google Earth

No culture was noted through the traverse area. This target was chosen from historic assessment files and government airborne maps.

The magnetometer signature indicates the presence of a magnetic bullseye anomaly. The 300nT circular bullseye anomaly appears to be approximately 200m-300m and appears to be on a weak linear 80 degree magnetic trend.

The VLF indicates a series of weak east west VLF trends.

It is recommended that the historical information be compiled and reviewed.

A drill hole is also recommended targeting coordinates 593925E and 5494200N.

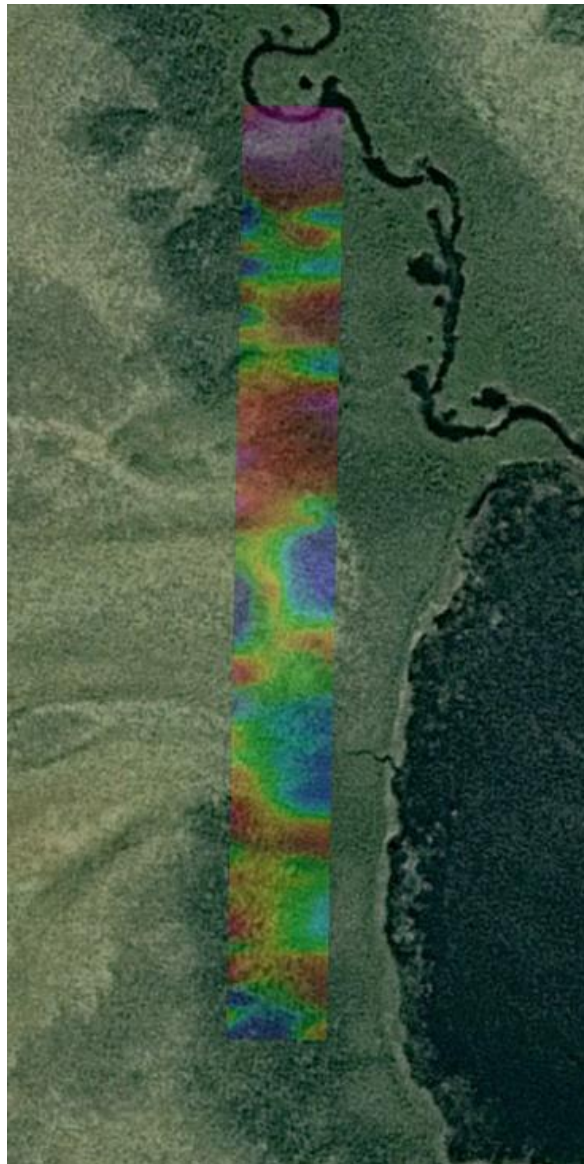


Figure 6: Magnetometer Plan Map of West Target on Google Earth

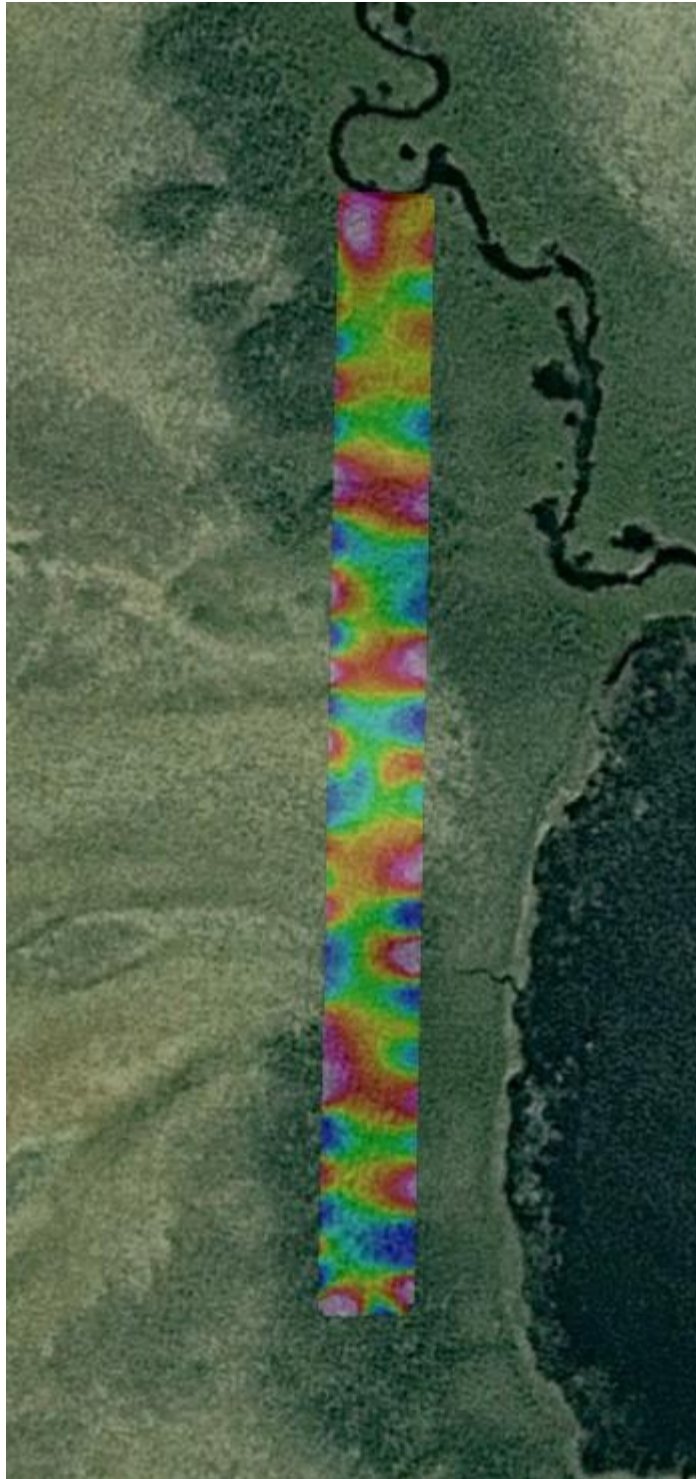


Figure 7: VLF Fraser Filter Map on Google Earth

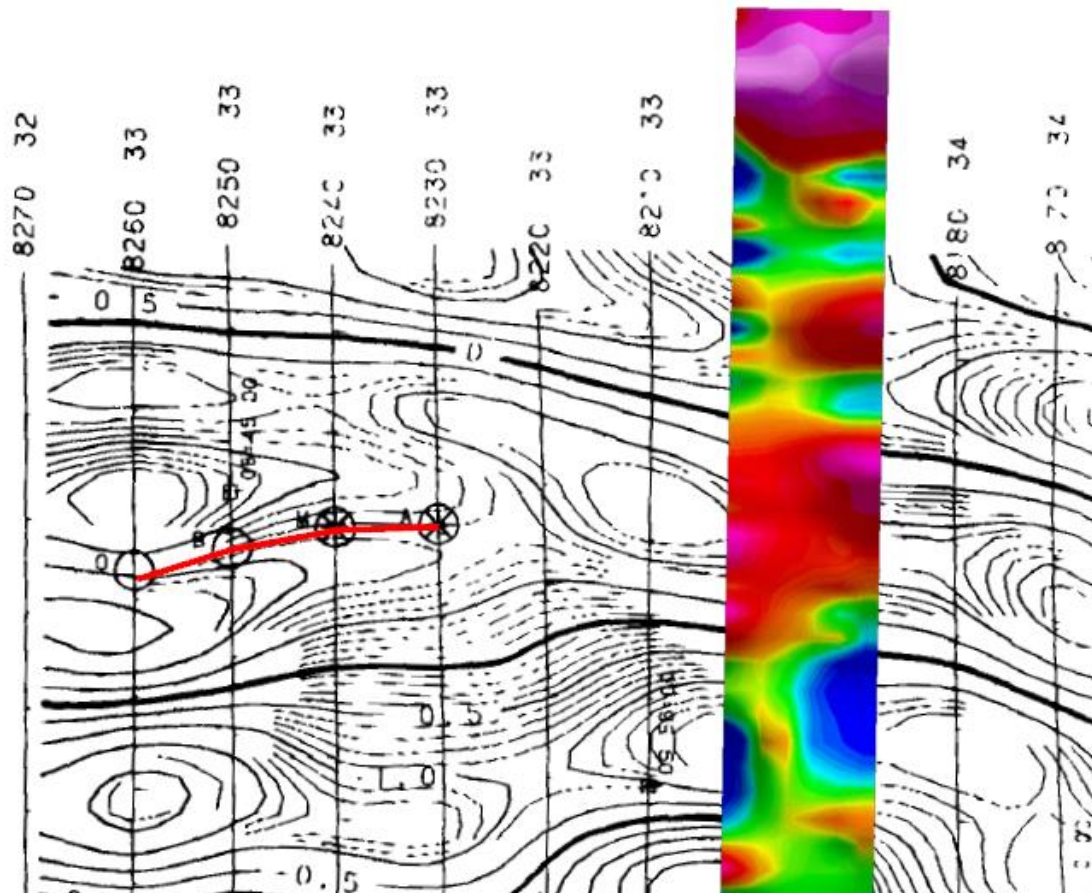


Figure 8: Ground Magnetometer on Georeferenced Sunburst Magnetometer with VLF Target Map

No culture was noted through the traverse area. This target was chosen from historic assessment files. During the survey period the snow conditions deteriorated significantly, making it impossible to continue the progress of the survey.

On the extreme north end of the magnetometer survey a magnetically elevated (+40nT) anomaly. This anomaly is unconstrained on the edge of the survey area and may represent an east-west dike or change in lithology.

The magnetically elevated trend from the 1987 Sunburst magnetometer survey appears to coincide with a magnetically elevated anomaly in the ground magnetometer survey.

No strong VLF EM signatures occur over the two lines surveyed. A weak VLF EM axis does flank the north edge of the magnetic anomaly. This may strengthen to the west and airborne VLF EM signature.

It is recommended that the magnetometer and VLF EM survey be extended to the west.

APPENDIX A

STATEMENT OF QUALIFICATIONS

I, C. Jason Ploeger, hereby declare that:

1. I am a professional geophysicist with residence in Larder Lake, Ontario and am presently employed as a Geophysicist and Geophysical Manager of Canadian Exploration Services Ltd. of Larder Lake, Ontario.
2. I am a Practising Member of the Association of Professional Geoscientists, with membership number 2172.
3. I graduated with a Bachelor of Science degree in geophysics from the University of Western Ontario, in London Ontario, in 1999.
4. I have practiced my profession continuously since graduation in Africa, Bulgaria, Canada, Mexico and Mongolia.
5. I am a member of the Ontario Prospectors Association, a Director of the Northern Prospectors Association, and a member of the Society of Exploration Geophysicists.
6. I do not have nor expect an interest in the properties and securities of **Tiger Gold Exploration Corporation**.
7. I am responsible for the final processing and validation of the survey results and the compilation of the presentation of this report. The statements made in this report represent my professional opinion based on my consideration of the information available to me at the time of writing this report.



C. Jason Ploeger, P.Geo., B.Sc.
Geophysical Manager
Canadian Exploration Services Ltd.

Larder Lake, ON
May 31, 202

APPENDIX C

REFERENCES

Google. (2022). *Location of the Bradette Property.*

CNES/Airbus & DigitalGlobe. (2022). *Survey design overlaid on Google Earth.* Google Earth.

MNDM & OGSEarth. (2022). *OGSEarth.* Ontario Ministry of Northern Development and Mines.

APPENDIX D

DIGITAL DATA

The digital data contains

- 1) PDF copy of this report
- 2) PDF copy of the maps
- 3) Pictures

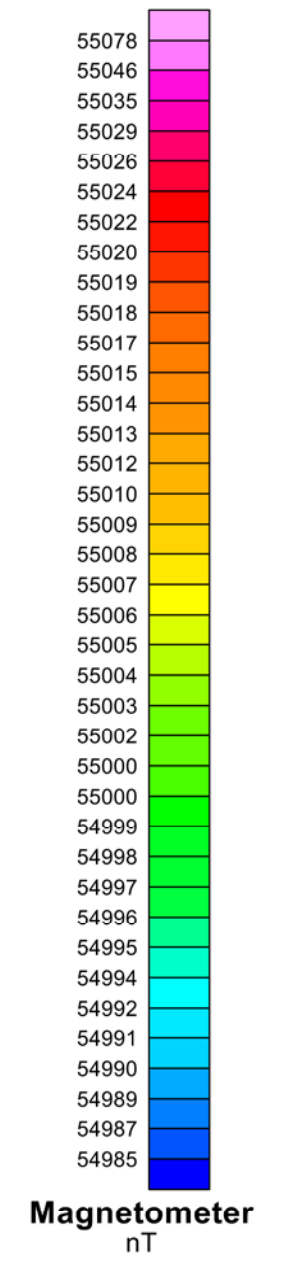
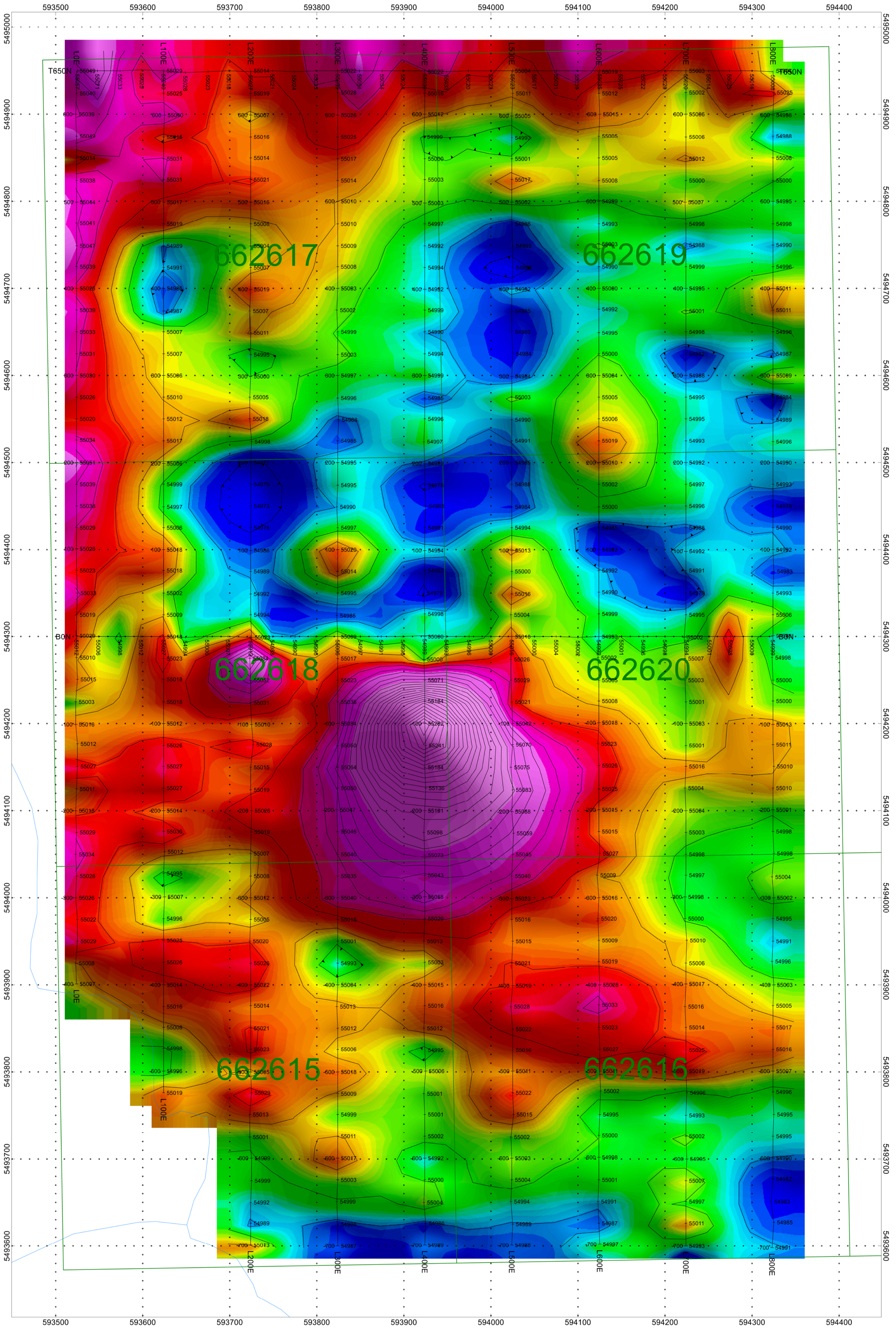
APPENDIX E

LIST OF MAPS (IN MAP POCKET)

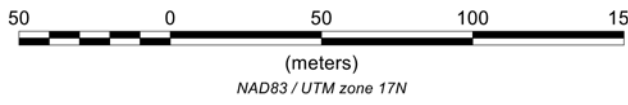
Plan Maps (1:2500)

- 1) Q3007-Tiger-Bradette-N-Mag-Cont
- 2) Q3007-Tiger-Bradette-N- VLF-NML
- 3) Q3007-Tiger-Bradette-NW-Mag-Cont
- 4) Q3007-Tiger-Bradette-NW-VLF-NML

TOTAL MAPS = 4



Scale 1:2500



NAD83 / UTM zone 17N

**TIGER GOLD
EXPLORATION CORPORATION**


**BRADETTE PROPERTY - West Target
Bradette Township, Ontario**

TOTAL FIELD MAGNETIC CONTOURED PLAN MAP
Base Station Corrected

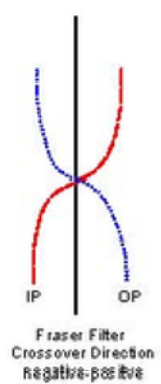
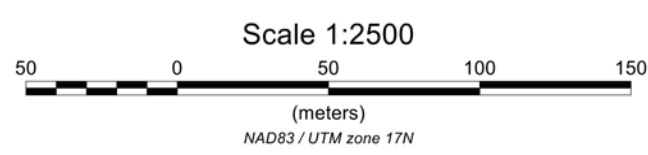
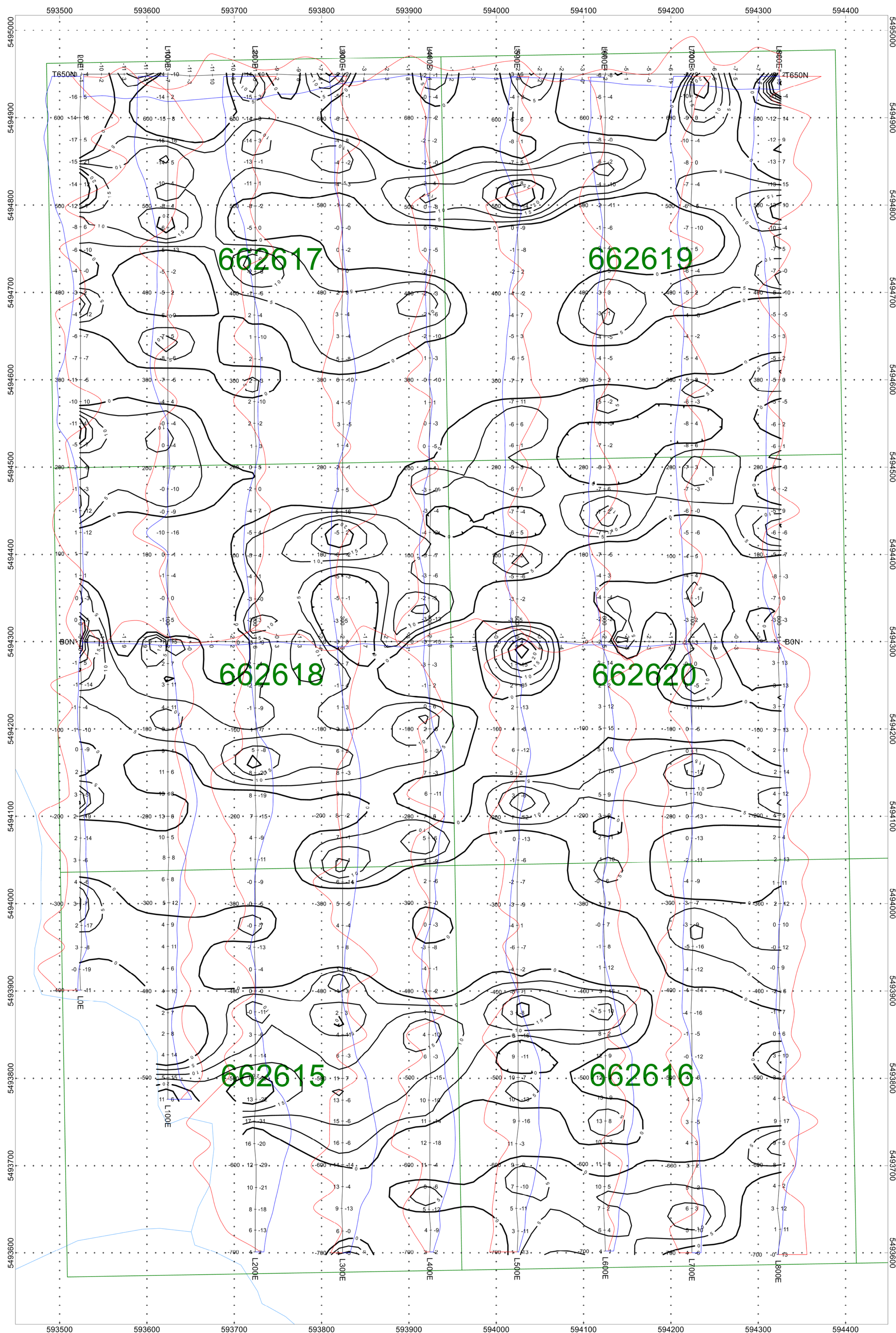
Posting Level: 0nT
Field Inclination/Declination: 73.5degN/11.4degW
Station Separation: 25 meters
Total Field Magnetic Contours: 10nT

GSM-19 OVERHAUSER MAGNETOMETER v7

Receiver Operated By: Claudia Moraga
and Giancarlo Smith
GPS Operated By: Bruce Lavalley and
Cameron Hansen
Processed by: C Jason Ploeger, P.Geo.
Map Drawn By: C Jason Ploeger, P.Geo.
May 2022



Drawing: Q3007-Tiger-Bradette-W-Mag-Cont



**TIGER GOLD
EXPLORATION CORPORATION**

**BRADETTE PROPERTY - West Target
Bradette Township, Ontario**

VLF IN PHASE/OUT PHASE PROFILE
25.2kHz NML - LaMOURE USA

In Phase: Posted Right/Bottom (Red)
Out Phase: Posted Left/Top (Blue)

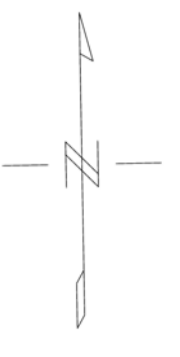
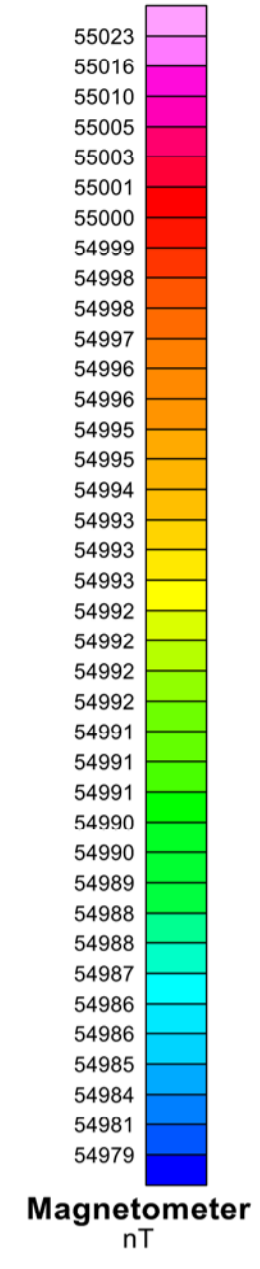
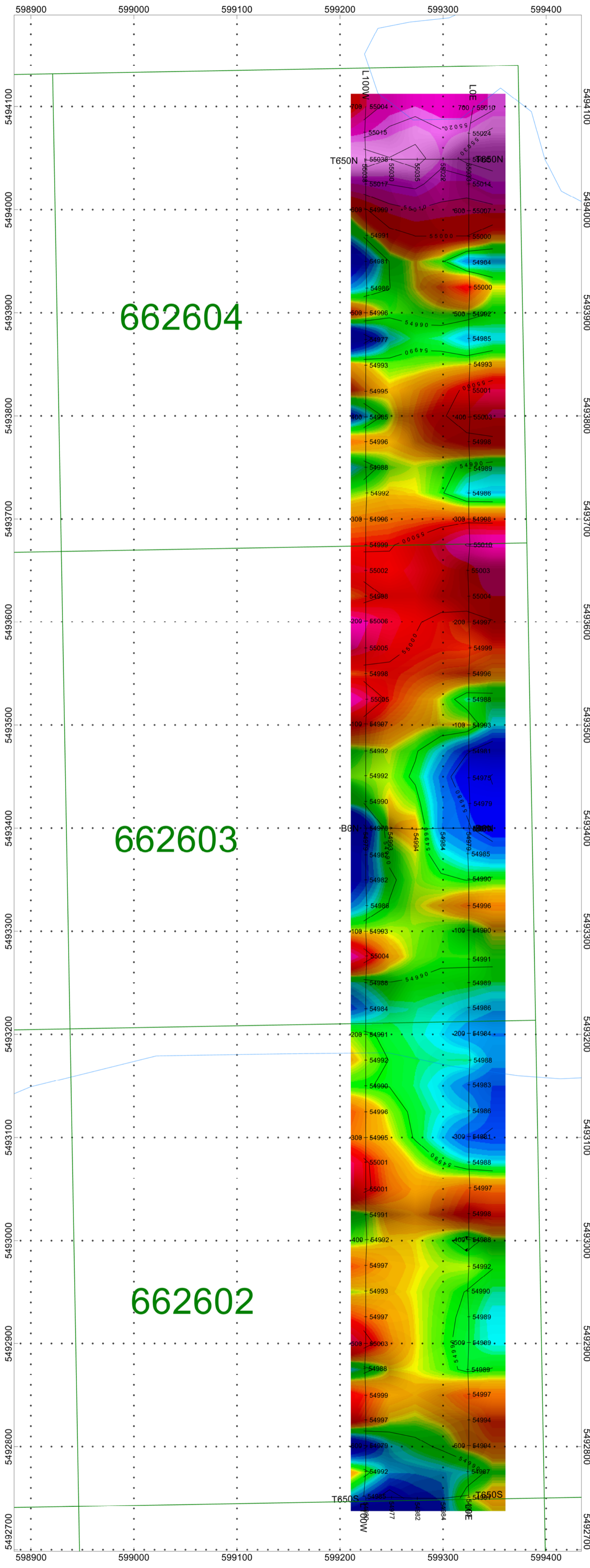
Vertical Profile Scales: 1 %/mm

Station Separation: 25 meters
Posting Level: 0

GSM-19 VLF v7

Receiver Operated By: Claudia Moraga
and Giancarlo Smith
GPS Operated By: Bruce Lavalley and
Cameron Hansen
Processed by: C Jason Ploeger, P.Geo.
Map Drawn By: C Jason Ploeger, P.Geo.
May 2022

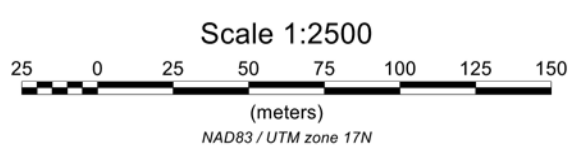




662604

662603

662602



**TIGER GOLD
EXPLORATION CORPORATION**

**BRADETTE PROPERTY - NorthWest Target
Bradette Township, Ontario**

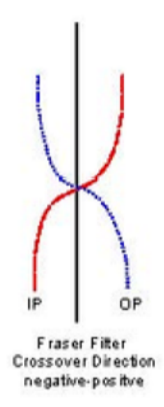
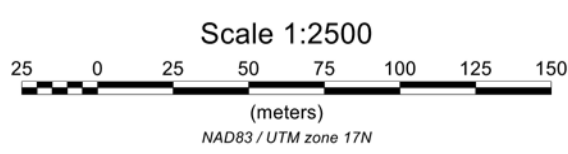
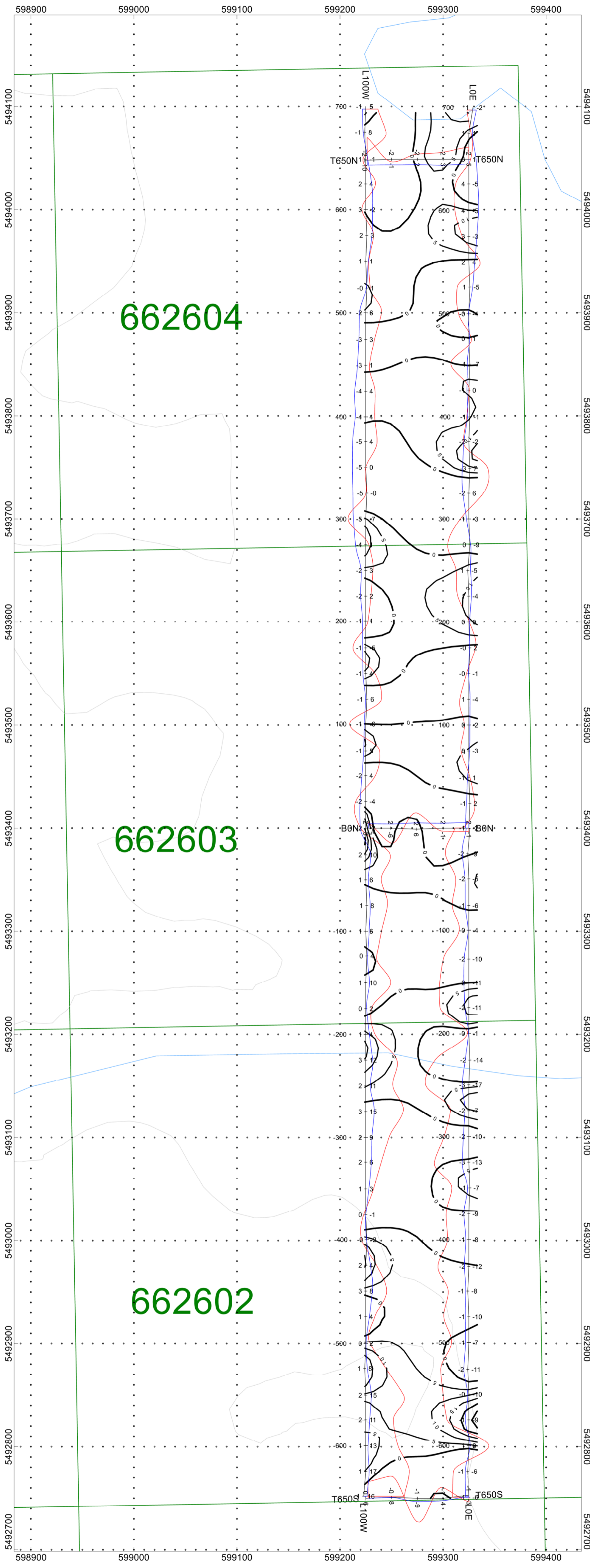
TOTAL FIELD MAGNETIC CONTOURED PLAN MAP
Base Station Corrected

Posting Level: 0nT
Field Inclination/Declination: 73.5degN/11.4degW
Station Separation: 25 meters
Total Field Magnetic Contours: 10nT

GSM-19 OVERHAUSER MAGNETOMETER v7

Receiver Operated By: Claudia Moraga and Giancarlo Smith
GPS Operated By: Bruce Lavalley and Cameron Hansen
Processed by: C Jason Ploeger, P.Geo.
Map Drawn By: C Jason Ploeger, P.Geo.
May 2022

Drawing: Q3007-Tiger-Bradette-NW-Mag-Cont



**TIGER GOLD
EXPLORATION CORPORATION**

**BRADETTE PROPERTY - NorthWest Target
Bradette Township, Ontario**

VLF IN PHASE/OUT PHASE PROFILE
25.2kHz NML - LaMOURE USA

In Phase: Posted Right/Bottom (Red)
Out Phase: Posted Left/Top (Blue)

Vertical Profile Scales: 1 %/mm

Station Separation: 25 meters
Posting Level: 0

GSM-19 VLF v7

Receiver Operated By: Claudia Moraga
and Giancarlo Smith
GPS Operated By: Bruce Lavalley and
Cameron Hansen
Processed by: C Jason Ploeger, P.Ge.
Map Drawn By: C Jason Ploeger, P.Ge.
May 2022

Drawing: Q3007-Tiger-Bradette-NW-VLF-NML