

We are committed to providing [accessible customer service](#).

If you need accessible formats or communications supports, please [contact us](#).

Nous tenons à améliorer [l'accessibilité des services à la clientèle](#).

Si vous avez besoin de formats accessibles ou d'aide à la communication, veuillez [nous contacter](#).

## Title Page

2022 work report for the eastern Tashota claims.  
Claim numbers 582476 and 582477.  
Work was completed on 2022/08/18

Work report was completed on 2022/06/29 .

Work report was completed and submitted by Peter Gehrels Client #406287.

## 2022 Work Report for Tashota East Property: aka The Lincon Gold Property

### Introduction

The Following report is of exploration work completed on claims 582476 and 582477 in the June of 2022 by Prospector Peter Gehrels .

One day was spent by Peter Gehrels to do an initial run over the property and to get the lay of the land and to see where how much of the 2000 striping program went in to these two units.

### Location and access.

The Tashota property is located 240 east of Thunder Bay, 5km past the Town of Jellico then 92 km north on the Kinghorn road. It is 2 north of the Northern CN rail line. The Middle of the property is at 16U 456993 5565209.

### Claims.

There are two claims registered under Peter Gehrels Client #406287, claims 582476 and 582477.

### Previous work.

1916: Early exploration at the start of the initial gold rush to the Tashota area, following the completion of the national transcontinental railway (i.e., the CNR mainline) in 1913. 1917: a 15 m, inclined shaft was sunk on a quartz vein system at what was then known as the "Hull Claims". 1928: Coniagas Mines Limited drilled 2 DDH totalling 306 m, near the south shaft area. Discouraging results forced the company to drop the property. Kipper Tashota Gold Mines Limited was formed to manage the property. A second, 10.5 m vertical shaft was sunk on what was thought to be the southern extension of the north shaft vein system (located east of Emily Creek road). 1936: Kipper Tashota Gold Mines Limited was chartered in Ontario and renamed Lincoln Gold Mines Limited. Extensive sampling of numerous hand-dug trenches and test pits was conducted into the late 1930s. 1973: The ground was restaked by J.F.M. Croteau. 1975: Derry, Michener and Booth completed an 11-hole Winkie diamond-drilling program, totalling 219 m, detailed geological mapping, and ground magnetometer surveys for Westburne-G.P. Drilling Ltd. Seven holes were completed near the north shaft and the remaining 4 holes were located near the south shaft (holes 75-1, 75-2, 75-10, and 75-11). 1998: NWT Copper Mines Ltd. acquired the property by staking late in 1998. 1999: NWT Copper Mines Ltd. completed an extensive prospecting, surface stripping and sampling program at the north and south shaft zones during the 1999 field season. 2000: the Lincoln property was optioned to International Taurus Resources Inc.; a joint venture for the project was arranged with International Kodiak Resources Inc. Field work in 2000 consisted of mechanical stripping, detailed mapping and sampling. Seventy-five trenches and stripped zones, covering a 350 by 800 m area, were exposed during the program. 2001: The two companies completed an 8.8 km long IP survey covering the main zones, which



subsequently uncovered 4 high-priority anomalies. 2003: Kodiak Exploration Limited completed a 13-hole diamond-drilling program across the south, central and northern portions of the main zone.

### Regional Geology.

The property lies in the eastern portion of the Wabigoon Subprovince of the Archean Superior province. The property is west of the Gzowski-Oboshkegan greenstone belt separated from the Gzowski-Oboshkegan volcanic center by the Gzowski Lake stock. The Deeds Lake, Gzowski Lake, Elbow Lake and Robinson Lake stocks surround the property (see Figure 3). This terrain is characterized by andesitic flows with minor volcanics and rare banded-iron formation. Regional metamorphism is upper greenschist to lower amphibolite facies. Linear, late Precambrian diabase dikes oriented NE-SW and NW-SE cut the stratigraphy.

### 2022 Work Program.

The work program consisted of just one day. Completed on my own on 2022/08/18. The initial idea was to find my way in there and do an initial visit to get a feel for the lay of the land, see what I was looking at for outcrop (as it looked pretty flat and swampy) and see where the stripping from the 2000 work program intersected my two claims.

The plan was to start in the Southern portion and traverse west to east and slowly work north as it looked to be the Highest of the land slowly dropping to a swamp as you head north. Overall there was not a lot of outcrop after the first traverse. I could see to the North that in the eastern section was more swampy and flat and that the western edge of the claims was higher but gradually dropped of into the swampy area as you headed east. As I explored you can see by my tracks that this was the case.

On the Start of the traverse I was south of a small creek and it seemed the bed rock encountered here was a medium grained Ultra mafic. I encountered one small rusty vein on an outcrop that was mineralized with CPY and minor malachite. It was located at 16 U 457040 5564907 and was sampled and has been submitted for assay, also a picture of the sample has been included as TA01. A second 15 cm wide quartz vein that I traced over 3m was encountered at 16 U 457088 5564999 TAQV2. It was a barren white quartz with no mineralization visible. As I got to the eastern edge of the claim I headed north crossing the low the creek area and heading back west the next outcrops encountered seemed to be of Greenstone. At 16 U 457033 5565181 I encountered an outcrop of this rock with a 30 cm wide barren qv that I traced for almost 15m. it was hard to sample but what I did see had no mineralization. A picture is included as OZVEIN30CM. From this point on it was very swampy and I trended west and back south to where I could see higher ground. I only encountered a few out cropping until I got to the western boundary and began to head back to the north. The next outcropping I encountered turned out to be extensions of the Northern stripping. The stripping went 30 to 50 m east into my claims and I ran into one area that looked like a pit or possible shaft at 16 U 456772 5565305. I have included a picture included called QVSTRIPE and took a sample from the debris pile next to the area that included quartz with cpy and py. The stripped area was fairly flat 20m by 35m with numerous 5 to 15 cm quartz veins running at various angles. At this point I was out of time and headed back to the truck. Both samples were submitted July 7<sup>th</sup> but with the great backlog I don't expect results back for up to two months.



Work claimed .

One day work on 2022/06/18 for \$350

One day for compiling the report on 2022/06/29 for \$350

Travel expenses for 664km return for \$332

For a total of \$1032

Conclusions and recommendations:

Finding that the 2000 stripping went into my units I think these are a essential part of the Tashota East Property: aka The Lincon Gold Property.

As I did not get to explore the far northern parts of the property or the eastern upper part in the swamp I would recommend at least one more day to explore these parts of the claims. I am hoping to get back once I receive the assays back in September.

References. MNDM

<http://www.geologyontario.mndm.gov.on.ca/mndmfiles/mdi/data/records/MDI42L04NE00028.html>



### Legend

- Provincial Grid Cell**
  - Available
  - Pending
  - Unavailable
- Mining Claim**
  - Mining Claim
  - Boundary Claim
- Alienation**
  - Withdrawal
  - Notice
- NDM Administrative Boundaries**
  - NDM Townships and Areas
  - Geographic Lot Fabric
  - UTM Grid 1K
  - UTM Grid 10K
  - Mining Division
  - Mineral Exploration and Development Region
  - CLUPA Protected Area - Far North
  - Resident Geologist District
  - Federal Land Other
  - Native Reserves
  - AMIS Sites
  - AMIS Features
  - Drill Hole
  - Mineral Occurrences
- MLAS Mining History**
  - Withdrawal - History
  - Notice - History
  - Mining Claim - History
  - Mining Land Tenure - History
  - Legacy Claim
- Provincial Grid**
  - Provincial Grid 250K
  - Provincial Grid 50K
  - Provincial Grid Group
- Land Tenure**
  - Surface Rights
  - Mining Rights
  - Mining and Surface Rights
  - Order-in-Council

Those wishing to register mining claims should consult with the Provincial Mining Recorders' Office of the Northern Development and Mines (NDM) for additional information on the status of the lands shown hereon. This map is not intended for navigational, survey, or land title determination purposes as the information shown on this map is compiled from various sources. Completeness and accuracy are not guaranteed. Additional information may also be obtained through the local Land Titles or Registry Office, or the Natural Resources and Forestry. The information shown is derived from digital data available in the Provincial Mining Recorders' Office at the time of downloading from the Northern Development and Mines (NDM) web site.

0 0.07 km

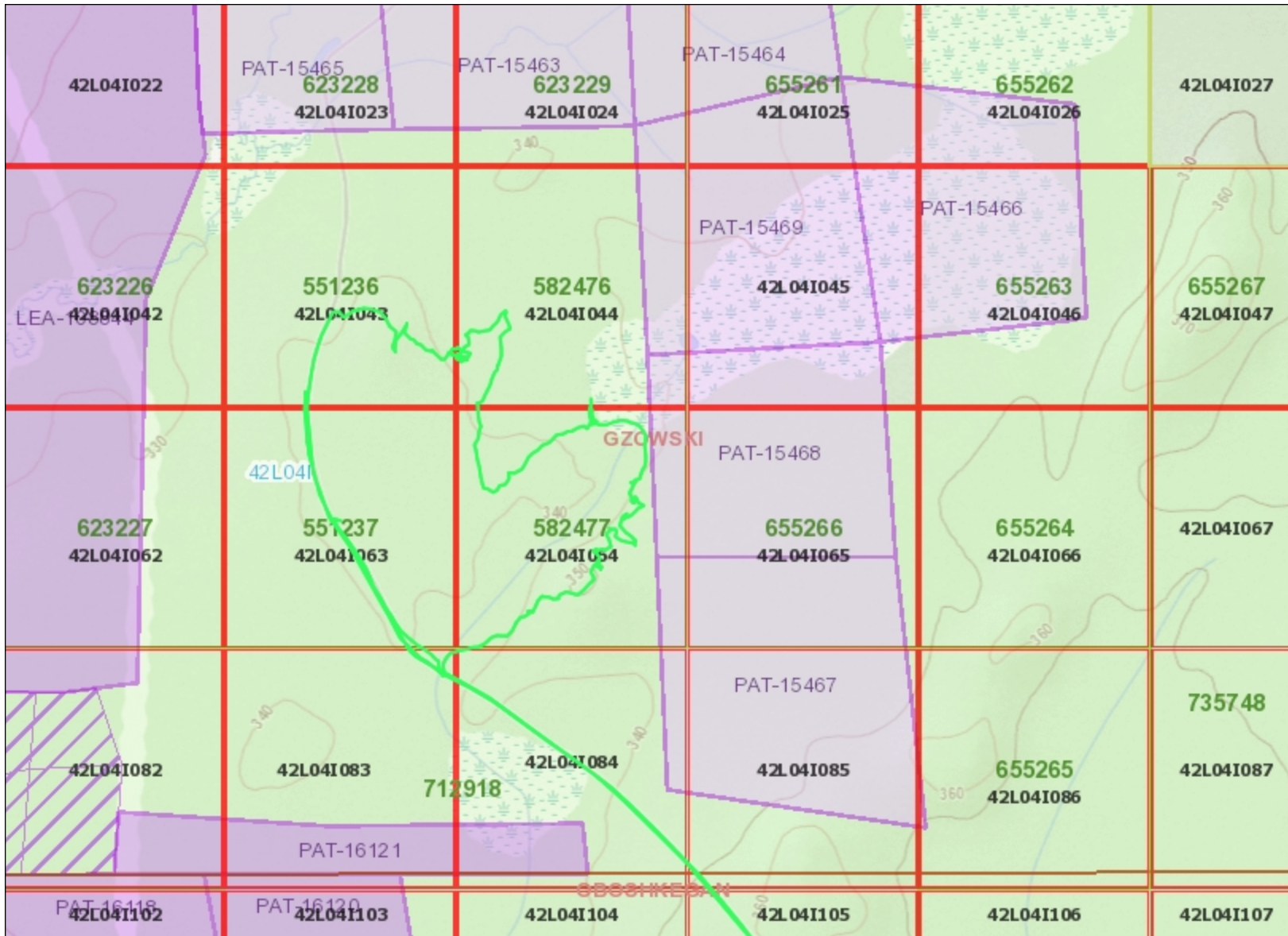
Projection: Web Mercator



Imagery Copyright Notices: Ontario Ministry of Northern Development, Mines, Natural Resources and Forestry; NASA Landsat Program; First Base Solutions Inc.; Aéro-Photo (1961) Inc.; DigitalGlobe Inc.; U.S. Geological Survey.  
© Queen's Printer for Ontario, 2022







### Legend

- Provincial Grid Cell**
  - Available
  - Pending
  - Unavailable
- Mining Claim**
  - Mining Claim
  - Boundary Claim
- Alienation**
  - Withdrawal
  - Notice
- NDM Administrative Boundaries**
  - NDM Townships and Areas
  - Geographic Lot Fabric
  - UTM Grid 1K
  - UTM Grid 10K
  - Mining Division
  - Mineral Exploration and Development Region
  - CLUPA Protected Area - Far North
  - Resident Geologist District
  - Federal Land Other
  - Native Reserves
- AMIS Sites**
  - AMIS Sites
  - AMIS Features
  - Drill Hole
  - Mineral Occurrences
- MLAS Mining History**
  - Withdrawal - History
  - Notice - History
  - Mining Claim - History
  - Mining Land Tenure - History
  - Legacy Claim
- Provincial Grid**
  - Provincial Grid 250K
  - Provincial Grid 50K
  - Provincial Grid Group
- Land Tenure**
  - Surface Rights
  - Mining Rights
  - Mining and Surface Rights
  - Order-in-Council

Those wishing to register mining claims should consult with the Provincial Mining Recorders' Office of the Northern Development and Mines (NDM) for additional information on the status of the lands shown hereon. This map is not intended for navigational, survey, or land title determination purposes as the information shown on this map is compiled from various sources. Completeness and accuracy are not guaranteed. Additional information may also be obtained through the local Land Titles or Registry Office, or the Natural Resources and Forestry. The information shown is derived from digital data available in the Provincial Mining Recorders' Office at the time of downloading from the Northern Development and Mines (NDM) web site.

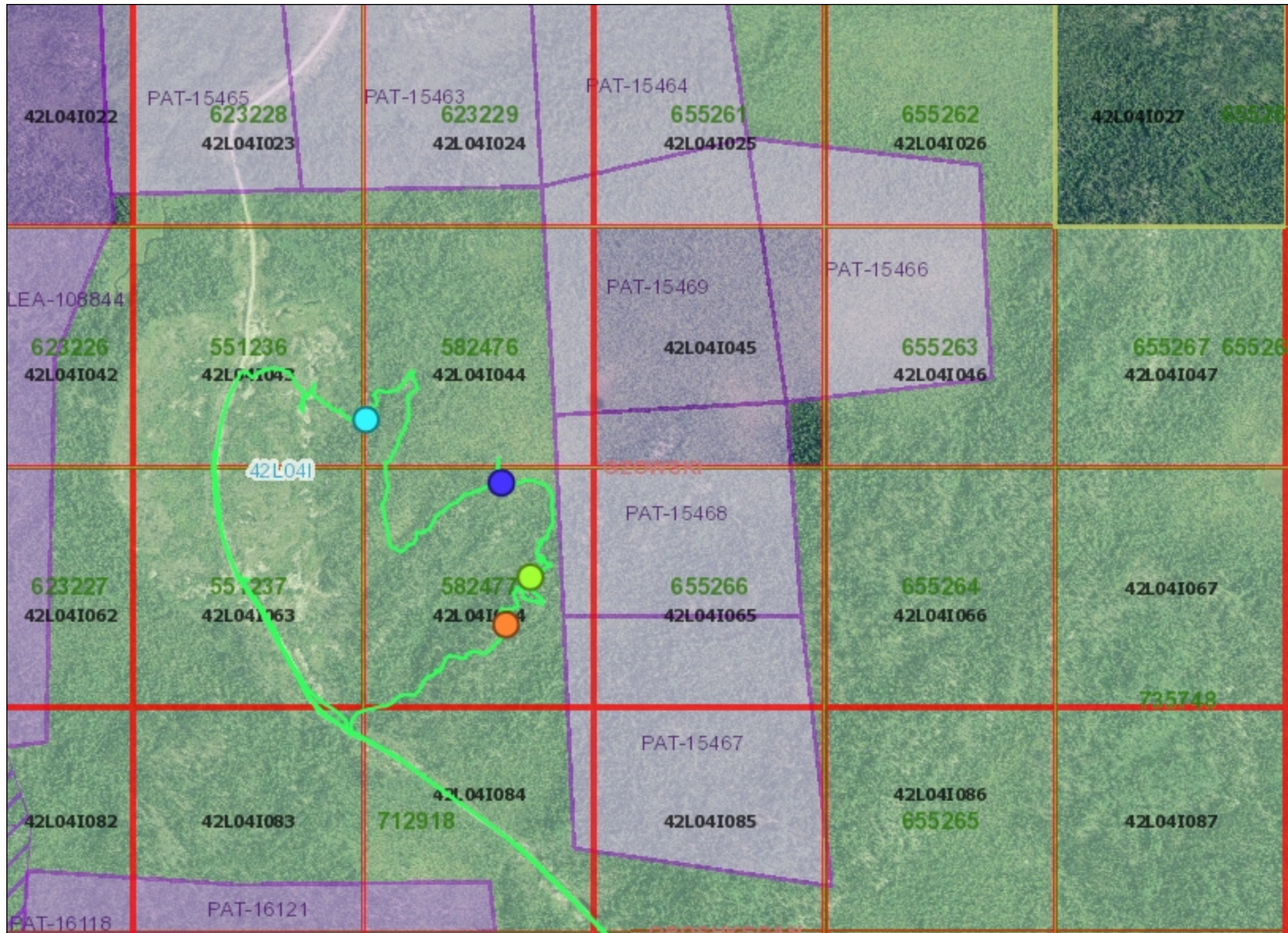


Projection: Web Mercator

Imagery Copyright Notices: Ontario Ministry of Northern Development, Mines, Natural Resources and Forestry; NASA Landsat Program; First Base Solutions Inc.; Aéro-Photo (1961) Inc.; DigitalGlobe Inc.; U.S. Geological Survey.  
© Queen's Printer for Ontario, 2022







### Legend

- Provincial Grid Cell**
  - Available
  - Pending
  - Unavailable
- Mining Claim**
  - Mining Claim
  - Boundary Claim
- Alienation**
  - Withdrawal
  - Notice
- NDM Administrative Boundaries**
  - NDM Townships and Areas
  - Geographic Lot Fabric
  - UTM Grid 1K
  - UTM Grid 10K
  - Mining Division
  - Mineral Exploration and Development Region
  - CLUPA Protected Area - Far North
  - Resident Geologist District
  - Federal Land Other
  - Native Reserves
- AMIS Sites**
  - AMIS Sites
  - AMIS Features
  - Drill Hole
  - Mineral Occurrences
- MLAS Mining History**
  - Withdrawal - History
  - Notice - History
  - Mining Claim - History
  - Mining Land Tenure - History
  - Legacy Claim
- Provincial Grid**
  - Provincial Grid 250K
  - Provincial Grid 50K
  - Provincial Grid Group
- Land Tenure**
  - Surface Rights
  - Mining Rights
  - Mining and Surface Rights
  - Order-in-Council

Those wishing to register mining claims should consult with the Provincial Mining Recorders' Office of the Northern Development and Mines (NDM) for additional information on the status of the lands shown hereon. This map is not intended for navigational, survey, or land title determination purposes as the information shown on this map is compiled from various sources. Completeness and accuracy are not guaranteed. Additional information may also be obtained through the local Land Titles or Registry Office, or the Natural Resources and Forestry. The information shown is derived from digital data available in the Provincial Mining Recorders' Office at the time of downloading from the Northern Development and Mines (NDM) web site.

0 0.59 km

Projection: Web Mercator



Imagery Copyright Notices: Ontario Ministry of Northern Development, Mines, Natural Resources and Forestry; NASA Landsat Program; First Base Solutions Inc.; Aéro-Photo (1961) Inc.; DigitalGlobe Inc.; U.S. Geological Survey.  
© Queen's Printer for Ontario, 2022





18/06/22  
TAOL



GPSMAP 64s  
16 U 0457037 GPS  
UTM 5564905 3m

GARMIN

MENU





GARMIN

80  
16 U 04 56773  
UTM 5565307  
343 m

1	2	3	4	5	6	7	8	9	10	11	12	13	14	15	16	17	18	19	20	21	22	23	24
1	2	3	4	5	6	7	8	9	10	11	12	13	14	15	16	17	18	19	20	21	22	23	24











