

We are committed to providing [accessible customer service](#).

If you need accessible formats or communications supports, please [contact us](#).

Nous tenons à améliorer [l'accessibilité des services à la clientèle](#).

Si vous avez besoin de formats accessibles ou d'aide à la communication, veuillez [nous contacter](#).

NTS: 32C14

**ASSAY RESULTS FOR ROCK SAMPLES COLLECTED ON
THE BLACK RIVER NORTH PROPERTY
GRIMSTHORPE TOWNSHIP, ONTARIO**

**For:
UNION GLORY GOLD LIMITED**

**By: Robert Dillman
ARJADEE PROSPECTING
Mount Brydges, Ontario**

I N D E X

	page
Summary	2
Location and Access	3
Claim Logistics	3
Land Status and Topography	7
Regional and Local Geology	7
History of Exploration	12
Survey Dates and Personnel	13
Survey Logistics	13
Survey Results	14
Discussion of Results	14
Rock Samples Pictures	16
Conclusions and Recommendations	20
References	21
Certificates of Author's	22
Figure 1. Property Location Map	4
Figure 2. Property Location Map	5
Figure 3. Claim Map & Location of Work	6
Figure 4. Regional Geology Map	7
Figure 5. Geology of Grimsthorpe Twp.	10
Figure 6. Property Geology Map	11
Figure 7. Rock Sample & Assays Map	19
Table 1: GPS Data: Waypoints & Rock Sample Descriptions, Locations, Assay Results	15

APPENDIX

Assay Certificates

Summary

This report discusses the results for assays on six rock samples collected on the Black River North Property in Grimsthorpe Township, Ontario. Rock samples were collected by the author, Robert Dillman and Dr. Jim Renaud during a brief property visit on September 16, 2021. All the samples were collected on claim: 249543, cell 32C14D004

The Black River North Property consists of 12 contiguous nonpatent boundary cell type mining claims. The property covers an area of 85.26 ha. All the claims are registered to the author, Robert Dillman. The work has been performed for Union Glory Gold Limited of Toronto, Ontario. Union Glory has an agreement to purchase the property from the author.

The rock samples were collected along a section of the Lingham Lake Access Road where it crosses claim 249543, cell 32C14D004. The samples consisted of loose material from underlying shallow outcrops of sulphide-rich metasedimentary rock dislodged by vehicles travelling along the road. Gold mineralization in silicified metasedimentary rocks and quartz veins has been found in samples collected previous by the author along this section of the road. Although well-mineralized with sulphides, gold content for five of the samples was low ranging 0.003 ppm to 0.011 ppm Au. One sample considered highly anomalous assayed 0.229 ppm Au.

Location and Access

The Black River North Property is located approximately 185 kilometres northeast of Toronto, Ontario, Canada (Figure 1). The property is situated in Grimsthorpe Township in Hastings County (Figure 2).

The property is within the Southern Ontario Mining Division and originally consisted of two contiguous unpatented mining claims covering the north half of Lot's 19 and 20, Concession XV and the south half of Lots 20 and 21, Concession XIV.

The property has good seasonal road access via the Lingham Lake Forest Access Road which crosses the property. From the town of Gimour on Highway 62, travel northeast on the Weslemkoon Lake Road for a distance of approximately 7.5 km to the Skootamatta Forest Access Road. Turn east on the Skootamatta Forest Access Road and continue for a distance of approximately 7.2 km to the Lingham Lake Access Road. Turning south on the Lingham Lake Access Road, the property is located 1.5 km from the intersection.

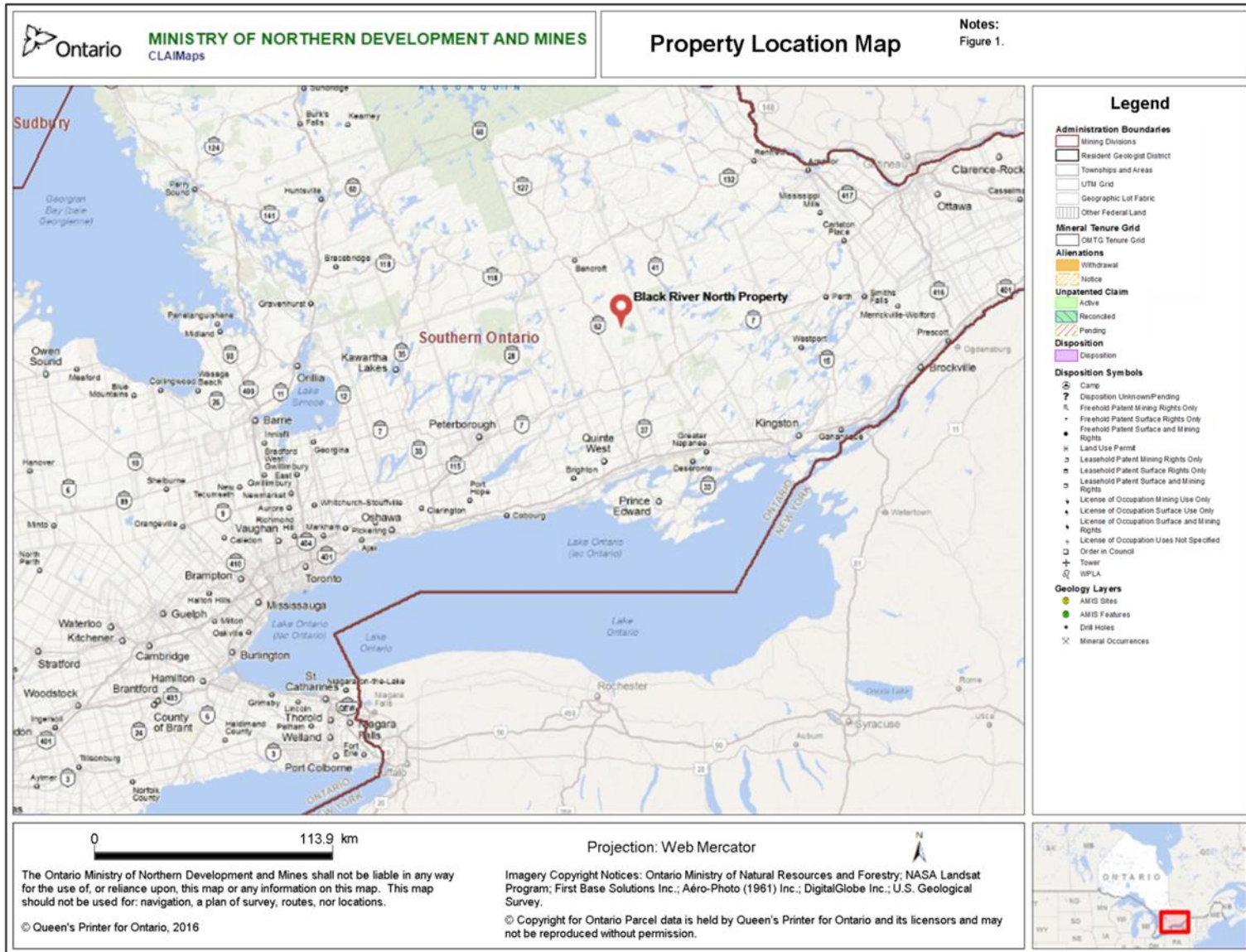
Claim Logistics and Location of Work

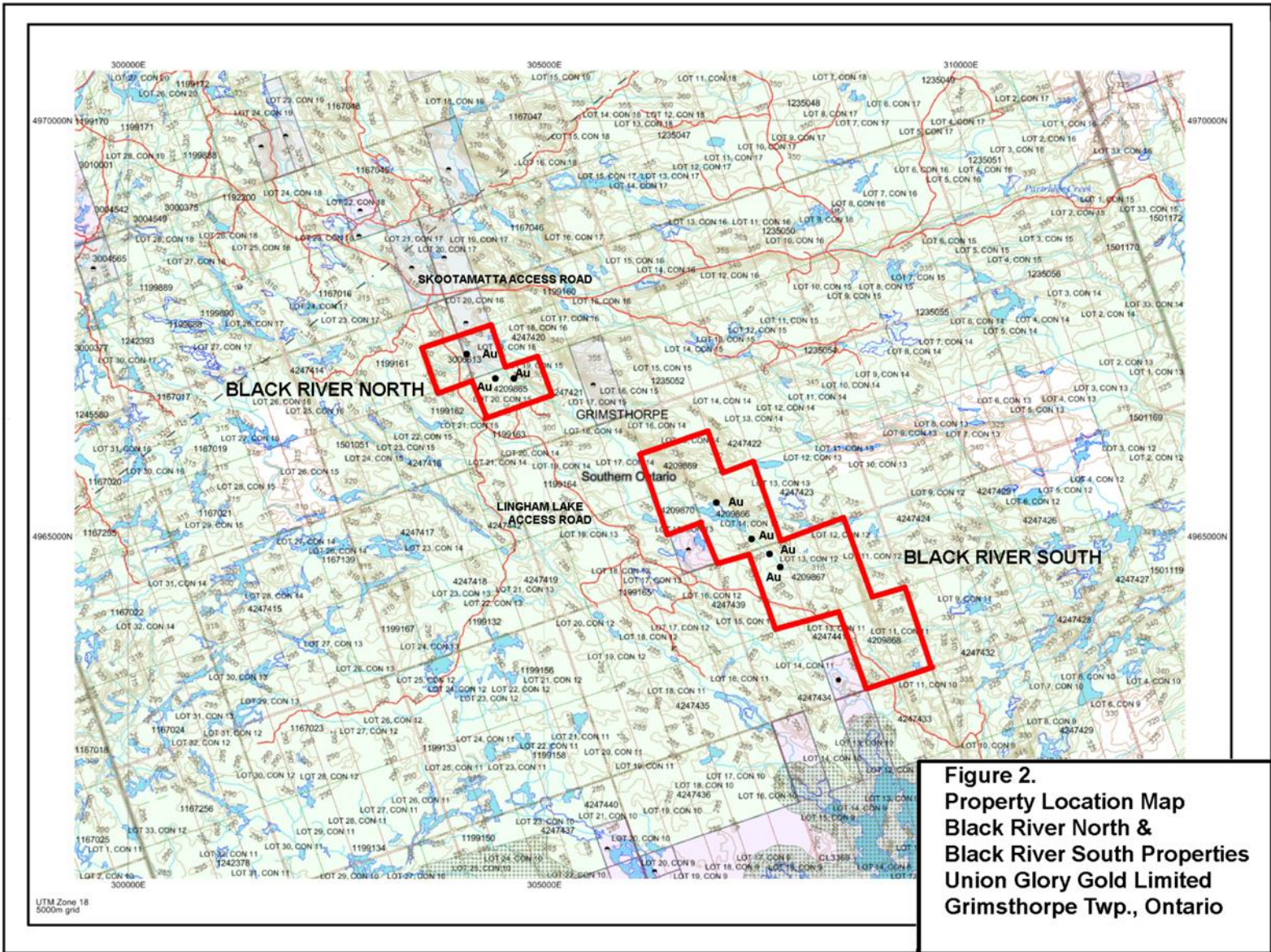
When the Mining Lands Administration came into effect in 2018, the property converted to 12 boundary claims (Figure 3). Titles to the mining claims comprising the Black River North property are recorded in the authors name:

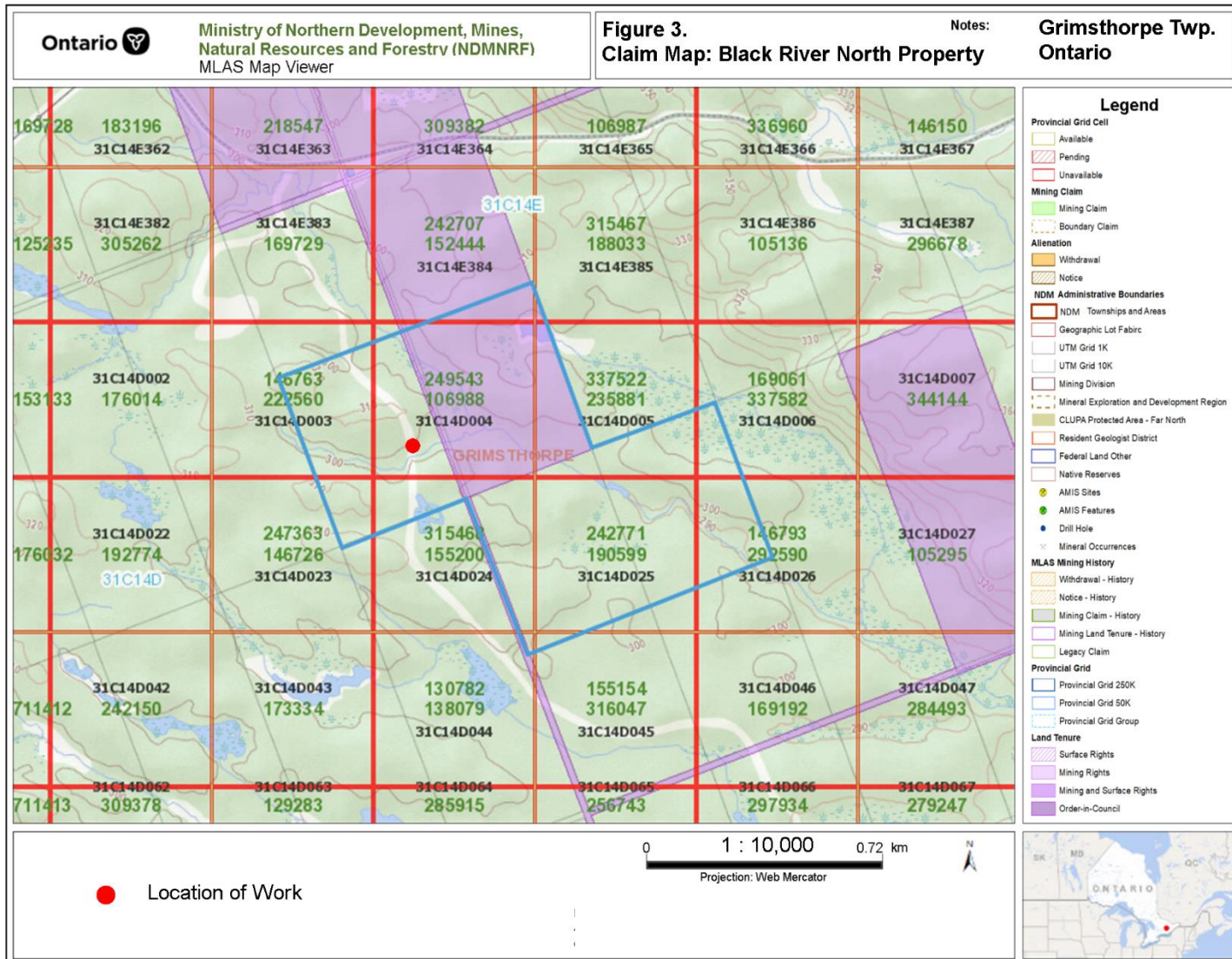
Robert Dillman of Mount Brydges, Ontario

At the time of this report, the Black River North Property is currently under a sales agreement with Union Glory Gold Limited, of Toronto, Ontario.

Work described in this report was performed on a section of claim 249543, cell 32C14D004.







Land Status and Topography

Three quarters (75%) of the Black River North Property is situated on lands designated as Crown Land (Figure 3). The surface status of the remaining 25% which includes the south half of lot 20, concession XIV, is designated as Surface Rights Only (S.R.O.) and title is held by the Queen of England.

The property is uninhabited. There are no buildings or habitats on the property. There are no powerlines.

The Black River North Property is at a mean elevation of 300 metres above sea level. The property has gentle topography with elevations ranging approximately 25 metres in height. The central region of the property is crossed by the Black River. The river drains towards the southeast and is generally rocky and fast flowing. The east side of the river is bounded by northwest-southeast orientated ridges of outcrop. The terrain west of the river is flat with some sections covered by gravelly till and swamp.

There is good outcrop exposure in many sections of the property especially east of the river and where higher elevations exist. Overburden is more frequent in areas west of the river and appears to be thin in low areas where outcrops are sparse. Overburden consists of till deposited by a glacier moving from north to south

Most of the property is covered by mixed forest dominated by spruce, pine, maple and poplar. Some areas east of the river have been partially logged in the last decade.

Regional and Local Geology

The Black River North Property is located within the Central Metasedimentary Belt of the Grenville Structural Provincial (Figure 4). The property is underlain by Proterozoic geological units belonging to the Grimsthorpe Domain dominated by mafic metavolcanic and volcanoclastic metasedimentary rocks older than 1270 Ma (Easton 1992). The Grimsthorpe Domain includes the Grimsthorpe Group, consisting mainly of metavolcanic-clastic metasedimentary rocks and minor metavolcanic flows of the Tudor Formation, minimum age 1279 +/-13 Ma (Easton 2004) and, the older Caniff Complex dominated by massive and pillowed tholeiitic metabasalts, metagabbro and metaperidotite. An unconformity exists between the Caniff Complex and the Tudor Formation.

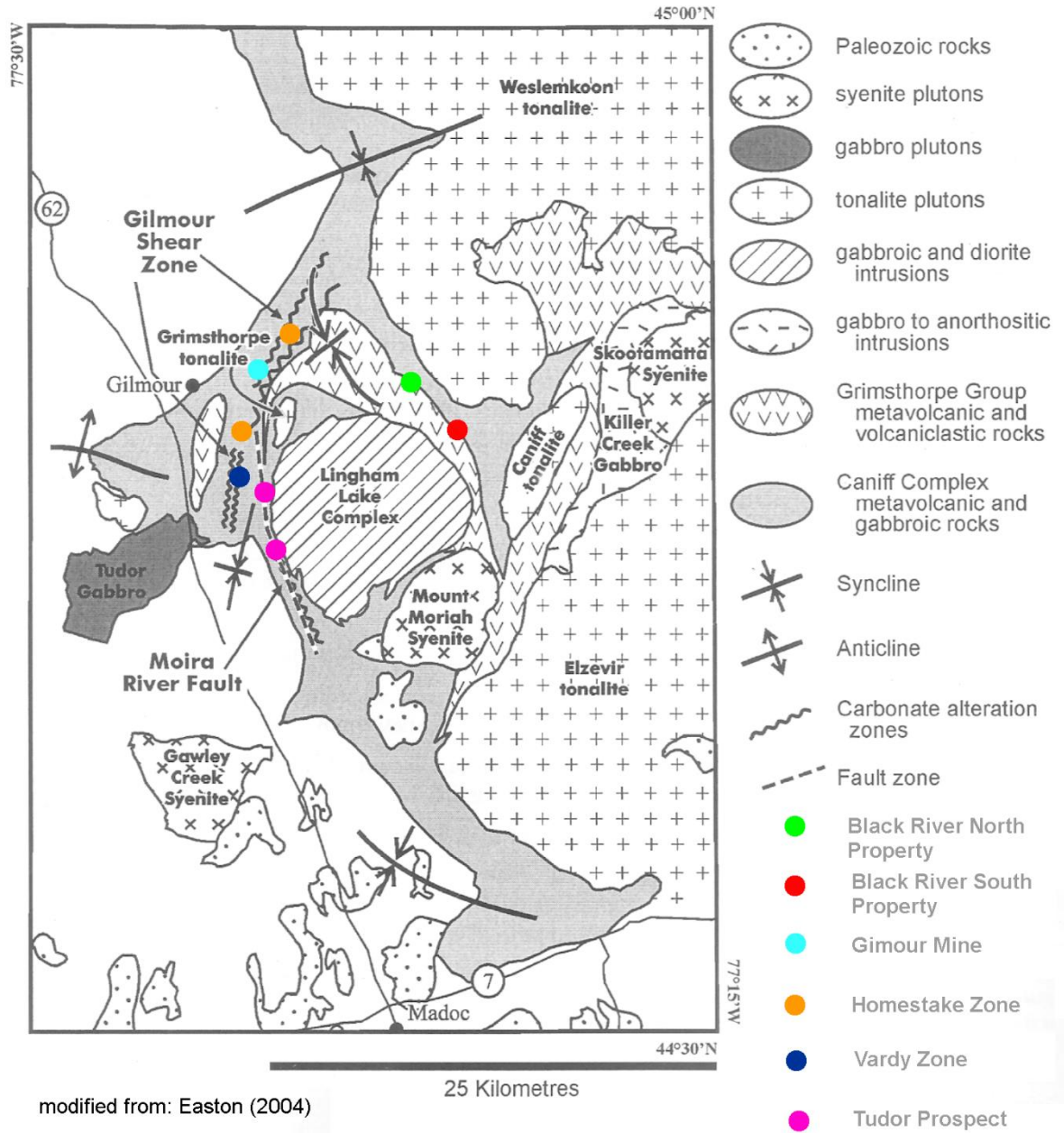


Figure 4. Regional Geology Tudor & Grimsthorpe Twp.'s

The Black River North Property is situated in southwest trending greenstone consisting of rock units belonging to the Grimsthorpe Domain and the Canniff Complex. These rock units are bordered to southwest by gabbroic and peridotite intrusive rocks of the Lingham Lake Complex and to the northeast, by granitic rocks of the Weslemkoon Tonalite. The property straddles the unconformity between the Grimsthorpe Domain and the Canniff Complex. East of the unconformity, rock units consist of massive basaltic and gabbroic flows. Rock units west of the unconformity consist mostly of large metavolcanic flows of basaltic rock and smaller metasedimentary units of greywacke, argillite and phyllite. Metasedimentary units strike northwest-southeast and dip moderately southwest to near-vertical with proximity to the unconformity.

Rock units west of the unconformity have been intruded by east-west trending diabase dikes which crosscut stratigraphy. It is unknown if the diabase dikes cross the unconformity and continue through the Canniff Complex. White, fine-grained felsite dikes have been observed in outcrops of the Grimsthorpe Domain and the Canniff Complex.

Metamorphic grade on the property ranges from the biotite grade of the Greenschist facies to hornblende grade of the Amphibolite facies. Alteration is limited and occurs mostly as silicification in metasedimentary rocks usually accompanied with quartz veins and stringers, pyrite, arsenopyrite and pyrrhotite.

Displacement of metasedimentary units along strike indicates the property is crossed by east-west orientated faults. Shearing is present with silicification in metasedimentary units of the Grimsthorpe Domain adjacent to the unconformity.

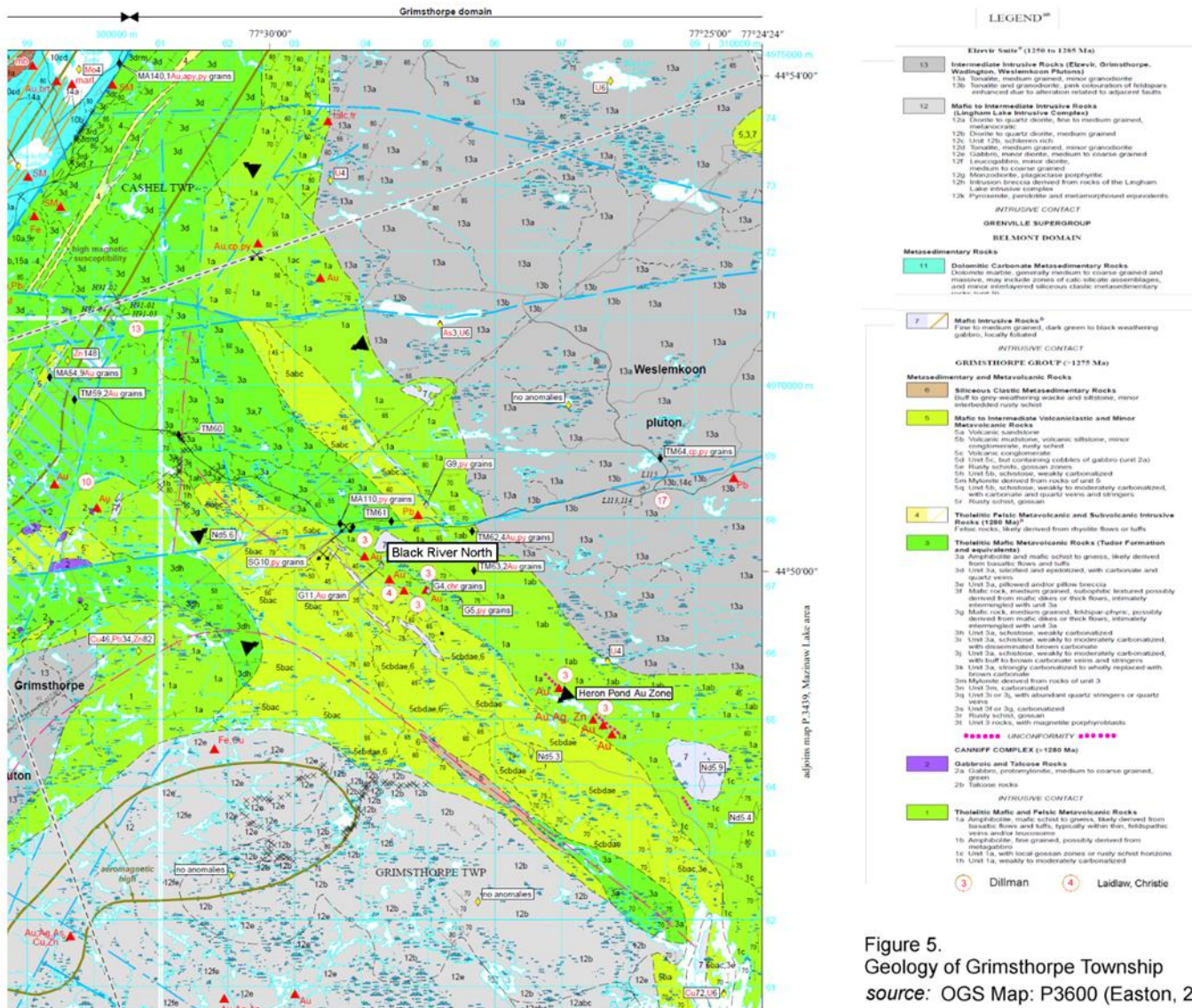
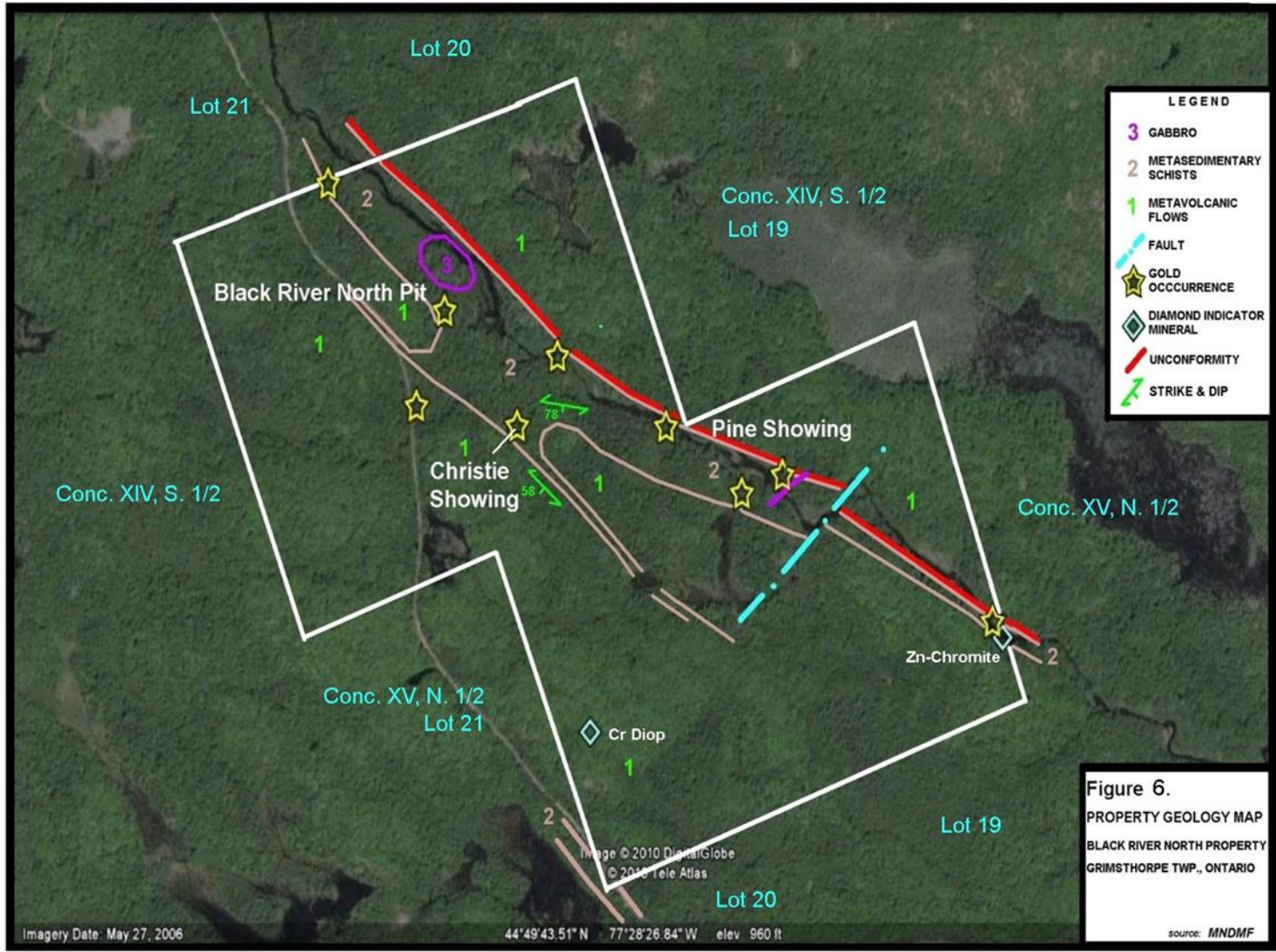


Figure 5. Geology of Grimsthorpe Township source: OGS Map: P3600 (Easton, 2008)



History of Exploration

In 1941 and 1942, the geology of Grimsthorpe Township and surrounding area was mapped by V. B. Meen on behalf of the Ontario Department of Mines. The area was re-mapped in 1990 by R. M. Easton of the Ontario Geological Survey. Prior to 1991, there is no record of mineral exploration in the area covered by the Black River North Property.

In 1991, the author using an OPAP grant discovered gold in sulphide rich metasedimentary schists in several areas in the vicinity to the Black River. Between 1991 and 2016, the author has performed various low-cost surveys on the property including: - prospecting, geological mapping, manual trenching, MMI and "B" horizon soil surveys, heavy mineral sampling, a ground radiometric survey, magnetometer and VLF surveys.

In 1992, Jim Laidlaw and Brian Christie prospected and collected soil samples on the property. The work was undertaken as part of a due diligence survey on the property on behalf of Homestake Minerals. The work led to the discovery of gold in the southwest section of lot 20, concession XIV now known as the Christie Showing.

In March 2010, a radiometric survey was completed over the property by Jim Chard. The survey outlined discrete radioactive highs in the vicinity to the gold occurrences on the property. The weak anomalies are attributed to potassic alteration occurring in the vicinity of the gold occurrences.

In 2012, the author and Mr. Chard completed a ground VLF-EM survey over the property. The survey detected several conductive features attributed to sulphide mineralization in metasedimentary schists. At the time, low water in the Black River led to the discovery of gold mineralization in a quartz vein in the southeast section of lot 20, concession XIV. The vein occurs in sheared metasedimentary schists exposed on the west side of the river and is very close to the unconformity. The site is known as the Pine Showing.

In July, 2016, the author and Mr. Chard completed a ground magnetometer survey over the property. The survey detected two areas with strong magnetics ranging greater than 60,000 nT. The magnetic anomalies occur over metasedimentary units in the south and southeast sections of the claim. Rock samples were also collected at the time.

Survey Dates and Personal

The rock samples collected on the Black River North property were collected during a brief property visit on September 16, 2021. Approximately 1.5 hours were devoted towards sampling.

The work was performed by Dr. Jim Renaud of London, Ontario and by the author, Robert Dillman of Mount Brydges, Ontario.

Survey Logistics

A total of 6 rock samples were collected on the property. Rock sample locations, descriptions and assay results are presented in Table 1 and plotted in Figure 7, the accompanying map included with this report. The map is at a scale of 1 : 5,000

Approximately 0.13 km was traversed to collect the rock samples.

A compass and a Garmin GPS model GPSMAP 66st was used for navigation and recording rock sample locations. The GPS unit was set to NAD83, Zone 17.

All rock samples were delivered to AGAT Laboratory for analysis. The lab is in Mississauga, Ontario. All the rock samples were Fire Assayed for gold using a 50 gram charge and finished by Inductively Coupled Plasma – Optical Emission Spectroscopy (ICP-OES) to measure the gold concentration. Assay certificates from the lab are appended to this report.

Survey Results

Six rock samples were collected along the section of the Lingham Lake Access Road crossing claim 249543, cell 32C14D004. Five of the samples consisted of sulphide bearing metasedimentary schists and one sample consisted silicified metavolcanic rock. All the samples were collected from loose rock material dislodged by vehicle traffic over shallow outcrop under the road.

Assay results for gold for five of the samples were low, ranging 0.003 to 0.011 ppm Au. Sample BRN-4 returned the highest assay of 0.229 ppm Au. This sample consisted of sheared and silicified metasedimentary rock with biotite slickened cleavages and well-mineralized with pyrite and traces of arsenopyrite.

Outcrops of metavolcanic rock and gabbro were observed on either side of the road. An outcrop of metasedimentary schists similar to the samples is exposed in the roadbed north of where the samples were collected.

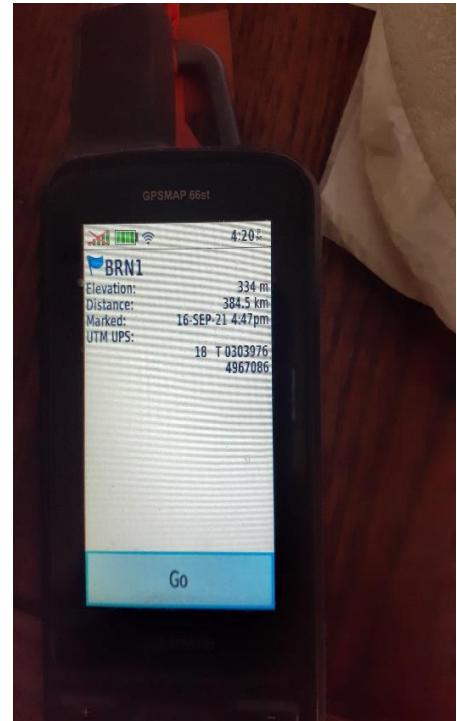
Discussion of Results

The metasedimentary unit underlying the road is part of the upper beds of the Grimsthorpe Group situated adjacent to the unconformity with the Canniff Complex. Sample BRN-4 is from a source situated under the road. The mineralization is similar in style to some of the gold occurrences found close to the unconformity including the Christie Showing located 250 metres southeast of the sample site and the Heron Pond Zone located on the Black River South Property 4.1 km to the southeast. Along this trend, gold occurs in a variety of structures including:

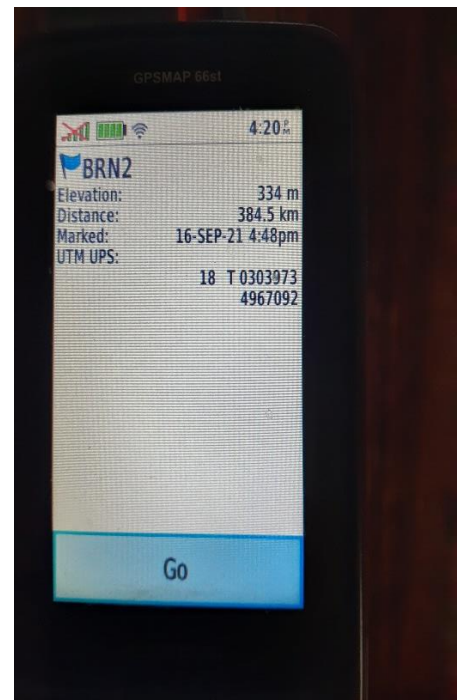
- 1.) deformed, sucrosic textured quartz veins mineralized with biotite, pyrite and arsenopyrite,
- 2.) bluish-grey quartz stringers mineralized with biotite, pyrite and arsenopyrite,
- 3.) silicified and breccia metasedimentary rocks mineralized with biotite, pyrite and arsenopyrite,
- 4.) white crystalline quartz veins mineralized with pyrite, chlorite and carbonate.

Table 1. Waypoint & Rock Sample Locations**Black River North Property, Grimsthorpe Township, Ontario NAD 83 Zone 17**

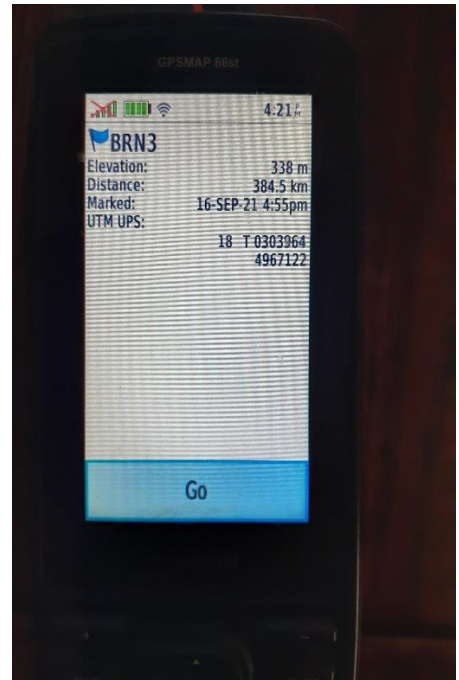
Waypoint	Date	Easting	Northing	Claim Cell	Au ppm	Notes
BRN-1	September 16, 2021 4:47 pm	303976	4967086	249543, 32C14D004	0.003	Loose in roadbed, angular <0.30m, representative, silicified metavolcanic? With hairline white quartz stringers, < 5% fine disseminated pyrite in wallrock.
BRN-2	September 16, 2021 4:48 pm	303973	4967092	249543, 32C14D004	0.010	Loose in roadbed, angular <0.30m, representative, sheared, sucrosic greywacke with stringers and clots to fine disseminated pyrite 10-30%
BRN-3	September 16, 2021 4:55 pm	303964	4967122	249543, 32C14D004	0.007	Loose in roadbed, angular <0.30m, representative, fine-grained greywacke schist with 1-5% very fine disseminated pyrite.
BRN-4	September 16, 2021 4:54 pm	303961	4967127	249543, 32C14D004	0.229	Loose in roadbed, angular <0.30m, representative, sheared, silicified greywacke, biotite-potassic alteration, 5-15% disseminated, clotty and stringered pyrite, Tr.-2% arsenopyrite.
BRN-5	September 16, 2021 4:56 pm	303957	4967130	249543, 32C14D004	0.011	Loose in roadbed, angular <0.30m, representative, sheared greywacke with strong pyrite mineralization 10 to 40%, coarse stringers to disseminated
BRN-6	September 16, 2021 4:57 pm	303954	4967147	249543, 32C14D004	0.010	Loose in roadbed, angular <0.30m, representative, , sheared greywacke with strong pyrite mineralization 5- 30%, coarse stringers to disseminated



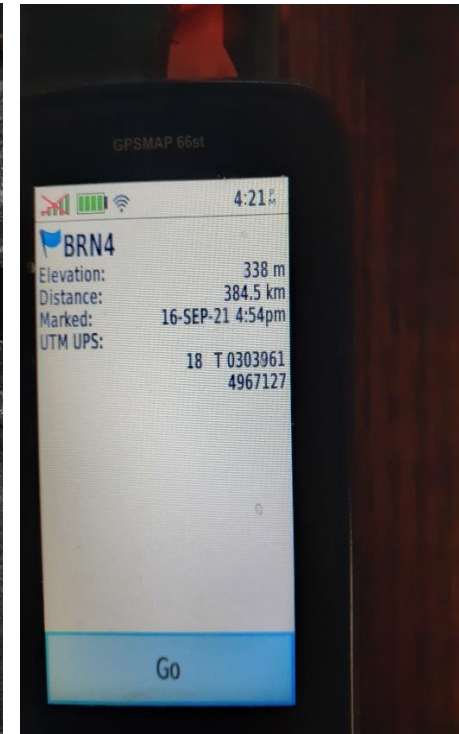
BRN-1 0.003 ppm Au



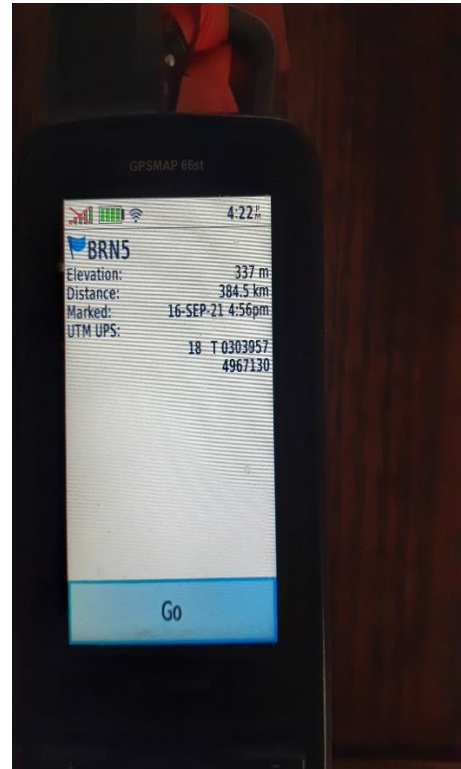
BRN-2 0.010 ppm Au



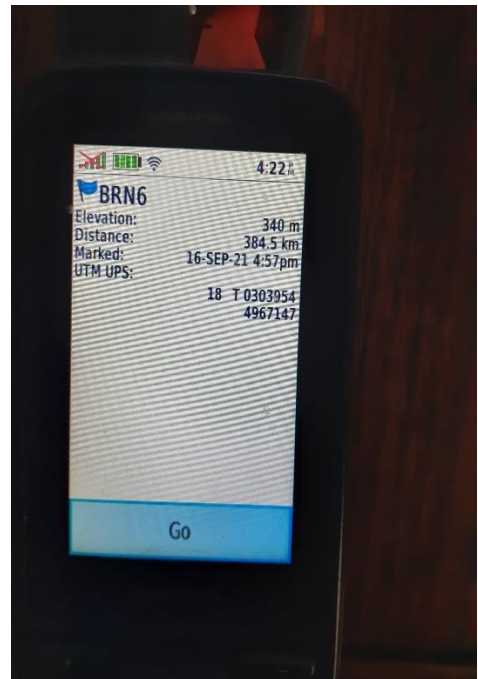
BRN-3 0.007 ppm Au



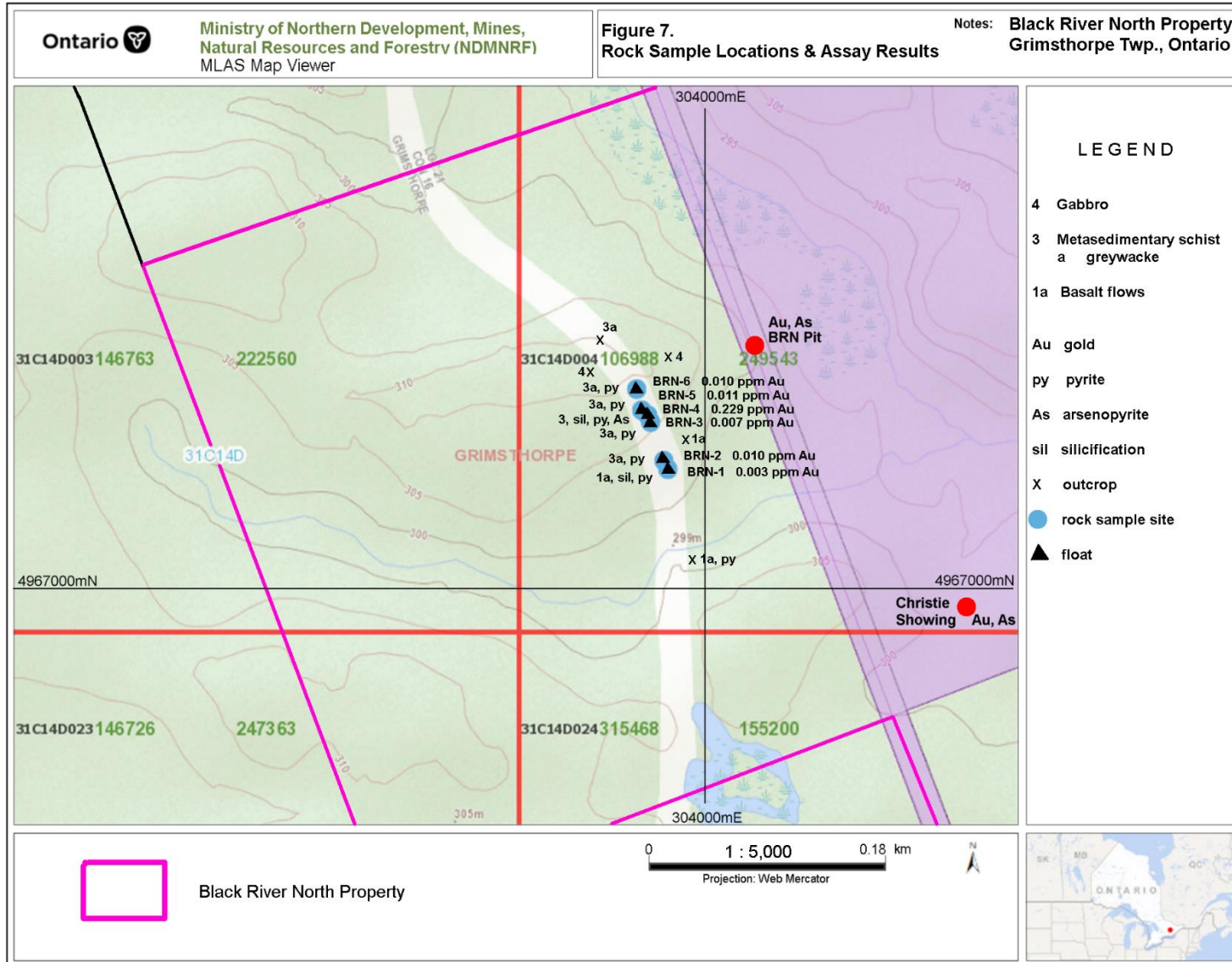
BRN-4 0.229 ppm Au



BRN-5 0.011 ppm Au



BRN-6 0.01 ppm Au

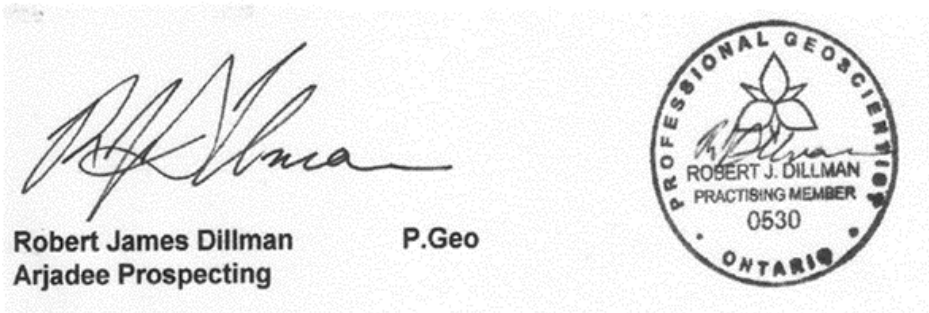


Conclusions and Recommendations

The gold occurrences on the Black River North Property are part of a series of metasedimentary hosted gold occurrences spatially associated with the unconformity between the Canniff Complex and the Grimsthorpe Group. Based on the results of the work to date, further exploration work is warranted to evaluate the potential of the property. It is recommended additional prospecting, geological mapping and overburden stripping be undertaken to evaluate the mineral potential of the property. The cost of the proposed work is \$30,000 and outlined as follows:

Prospecting	5,000
Geological Mapping	10,000
Overburden stripping	10,000
Assays	<u>5,000</u>
	\$30,000

Respectfully submitted,



Robert Dillman B.Sc. P.Geo.
 July 20, 2022

References

- Christie, B. J. 1992.** Report on Prospecting, Geological Mapping and Soil Sampling, Dillman: Black River Property, Grimsthorpe Township, Southern Ontario Mining Division, Ontario. Unpublished internal report for Homestake Minerals.
- Dillman, R.J. 2016.** Report On Rock Sampling Black River North Property, Grimsthorpe Township, Ontario. *For:* Union Glory Gold Limited. Unpublished assessment report.
- Dillman, R. J. and Chard, J. M. 2016.** Report on Ground Magnetometer Survey, Claim 3006613, Black River North Property, Grimsthorpe Township, Ontario. Unpublished assessment file.
- Dillman, R. J. and Chard, J. M. 2012.** Report on Ground VLF Electromagnetic (EM) Survey, Black River North Property, Grimsthorpe Township, Ontario. Unpublished assessment file.
- Dillman, R. J. 2010.** Report on Ground Gamma-Ray Spectrometer Survey, Black River North Property, Grimsthorpe Township, Ontario. Unpublished assessment file.
- Dillman, R. J. 2003.** Report on Prospecting and Rock Sampling on the Black River Property, Grimsthorpe Township, Ontario. Unpublished assessment file.
- Dillman, R. J. 2003.** Report on Additional Heavy Mineral Sampling on the Black River Property, Grimsthorpe Township, Ontario. Unpublished assessment file.
- Dillman, R. J. 2000.** Report on Rock and Heavy Mineral Sampling on the Black River Property, Grimsthorpe Township, Ontario. Unpublished assessment file.
- Dillman, R. J. 1992.** Report on Electromagnetic (VLF) and Magnetic Surveys. Black River Property, Grimsthorpe Township, Southern Ontario Mining Division, Ontario. Report for Ontario Prospectors Assistance Program, file no. OP92-235.
- Dillman, R. J. 1991.** Report on Prospecting, Grimsthorpe Township, Hastings County, Ontario. Report for Ontario Prospectors Assistance Program, file no. OP91-535.
- Easton, R. M. and Ford, F. 1990.** Geology of the Grimsthorpe Area: In Summary of Field Work and Other Activities 1990. Ontario Geological Survey, Miscellaneous Paper 151, p. 99-110.
- Meen, V. B. 1942.** Geology of Grimsthorpe-Barrie Area, Ontario Department of Mines, Vol. 51, pt. 4, p. 1-50 (with Map 51d: published 1944).

Robert J. Dillman P.Ge, B.Sc.
ARJADEE PROSPECTING
8901 Reily Drive, Mount Brydges, Ontario, Canada, N0L1W0
Phone/ fax (519) 264-9278

CERIFICATE of AUTHOR

I, Robert J. Dillman, Professional Geologist, do certify that:

1. I am the President and the holder of a Certificate of Authorization for:

ARJADEE PROSPECTING
8901 Reily Drive, Mount Brydges, Ontario, Canada N0L 1W0

2. I graduated in 1991 with a Bachelor of Science Degree in Geology from the University of Western Ontario.

3. I am an active member of:

Professional Geoscientists of Ontario, PGO
Prospectors and Developers Association of Canada, PDAC

4. I have been a licensed Prospector in Ontario since 1984.


5. I have worked continuously as a Professional Geologist for 31 years.


6. Unless stated otherwise, I am responsible for the preparation of all sections of the Assessment Report titled:

ASSAY RESULTS FOR ROCK SAMPLES COLLECTED ON THE BLACK RIVER NORTH PROPERTY
GRIMSTHORPE TOWNSHIP, ONTARIO
dated, July 20, 2022

7. I am not aware of any material fact or material change with respect to the subject matter of the Assessment Report that is not contained in the Assessment Report and its omission to disclose makes the Assessment Report misleading.

Dated this 22th day of July, 2022


Robert James Dillman P.Ge
Arjadee Prospecting





CLIENT NAME: ROBERT DILLMAN
8901 REILY DRIVE
MOUNT BRYDGES, ON N0L 1W0
519-264-9278

ATTENTION TO: ROBERT DILLMAN

PROJECT:

AGAT WORK ORDER: 21T810750

SOLID ANALYSIS REVIEWED BY: Sherin Moussa, Senior Technician

DATE REPORTED: Dec 08, 2021

PAGES (INCLUDING COVER): 8

Should you require any information regarding this analysis please contact your client services representative at (905) 501-9998

*Notes

Disclaimer:

- All work conducted herein has been done using accepted standard protocols, and generally accepted practices and methods. AGAT test methods may incorporate modifications from the specified reference methods to improve performance.
- All samples will be disposed of within 90 days following analysis, unless expressly agreed otherwise in writing. Please contact your Client Project Manager if you require additional sample storage time.
- AGAT's liability in connection with any delay, performance or non-performance of these services is only to the Client and does not extend to any other third party. Unless expressly agreed otherwise in writing, AGAT's liability is limited to the actual cost of the specific analysis or analyses included in the services.
- This Certificate shall not be reproduced except in full, without the written approval of the laboratory.
- The test results reported herewith relate only to the samples as received by the laboratory.
- Measurement Uncertainty is not taken into consideration when stating conformity with a specified requirement.
- Application of guidelines is provided "as is" without warranty of any kind, either expressed or implied, including, but not limited to, warranties of merchantability, fitness for a particular purpose, or non-infringement. AGAT assumes no responsibility for any errors or omissions in the guidelines contained in this document.
- All reportable information as specified by ISO/IEC 17025:2017 is available from AGAT Laboratories upon request.



Certificate of Analysis

AGAT WORK ORDER: 21T810750

PROJECT:

5623 McADAM ROAD
MISSISSAUGA, ONTARIO
CANADA L4Z 1N9
TEL (905)501-9998
FAX (905)501-0589
<http://www.agatlabs.com>

CLIENT NAME: ROBERT DILLMAN

ATTENTION TO: ROBERT DILLMAN

(200-) Sample Login Weight

DATE SAMPLED: Oct 03, 2021

DATE RECEIVED: Sep 30, 2021

DATE REPORTED: Dec 08, 2021

SAMPLE TYPE: Rock

Sample ID (AGAT ID)	Analyte:	Sample Login Weight
	Unit:	kg
	RDL:	0.01
BRN1 (3049898)		1.72
BRN2 (3049899)		2.39
BRN3 (3049900)		1.00
BRN4 (3049901)		3.82
BRN5 (3049902)		3.24
BRN6 (3049903)		1.76

Comments: RDL - Reported Detection Limit

Analysis performed at AGAT 5623 McAdam Rd., Mississauga, ON (unless marked by *)

Insufficient Sample : IS

Sample Not Received : SNR

Certified By:



Certificate of Analysis

AGAT WORK ORDER: 21T810750

PROJECT:

5623 McADAM ROAD
MISSISSAUGA, ONTARIO
CANADA L4Z 1N9
TEL (905)501-9998
FAX (905)501-0589
<http://www.agatlabs.com>

CLIENT NAME: ROBERT DILLMAN

ATTENTION TO: ROBERT DILLMAN

(202-552) Fire Assay - Trace Au, ICP-OES finish (50g charge) (ppm)

DATE SAMPLED: Oct 03, 2021

DATE RECEIVED: Sep 30, 2021

DATE REPORTED: Dec 08, 2021

SAMPLE TYPE: Rock

Analyte:	Unit:	RDL:
Au	ppm	0.001
Sample ID (AGAT ID)		
BRN1 (3049898)		0.003
BRN2 (3049899)		0.010
BRN3 (3049900)		0.007
BRN4 (3049901)		0.229
BRN5 (3049902)		0.011
BRN6 (3049903)		0.010

Comments: RDL - Reported Detection Limit

Analysis performed at AGAT 5623 McAdam Rd., Mississauga, ON (unless marked by *)

Insufficient Sample : IS

Sample Not Received : SNR

Certified By:



Certificate of Analysis

AGAT WORK ORDER: 21T810750

PROJECT:

5623 McADAM ROAD
MISSISSAUGA, ONTARIO
CANADA L4Z 1N9
TEL (905)501-9998
FAX (905)501-0589
<http://www.agatlabs.com>

CLIENT NAME: ROBERT DILLMAN

ATTENTION TO: ROBERT DILLMAN

Sieving - % Passing (Crushing)

DATE SAMPLED: Oct 03, 2021

DATE RECEIVED: Sep 30, 2021

DATE REPORTED: Dec 08, 2021

SAMPLE TYPE: Rock

Analyte: Crush-Pass
%

Unit: %

Sample ID (AGAT ID) RDL: 0.01

BRN1 (3049898) 76.47

Comments: RDL - Reported Detection Limit

Analysis performed at AGAT 5623 McAdam Rd., Mississauga, ON (unless marked by *)

Insufficient Sample : IS

Sample Not Received : SNR

Certified By:



Certificate of Analysis

AGAT WORK ORDER: 21T810750

PROJECT:

5623 McADAM ROAD
 MISSISSAUGA, ONTARIO
 CANADA L4Z 1N9
 TEL (905)501-9998
 FAX (905)501-0589
<http://www.agatlabs.com>

CLIENT NAME: ROBERT DILLMAN

ATTENTION TO: ROBERT DILLMAN

Sieving - % Passing (Pulverizing)

DATE SAMPLED: Oct 03, 2021

DATE RECEIVED: Sep 30, 2021

DATE REPORTED: Dec 08, 2021

SAMPLE TYPE: Rock

	Analyte: Pul-Pass %	
	Unit: %	
Sample ID (AGAT ID)	RDL: 0.01	
BRN1 (3049898)	88.96	

Comments: RDL - Reported Detection Limit

Analysis performed at AGAT 5623 McAdam Rd., Mississauga, ON (unless marked by *)

Insufficient Sample : IS

Sample Not Received : SNR

Certified By:



CLIENT NAME: ROBERT DILLMAN

ATTENTION TO: ROBERT DILLMAN

(202-552) Fire Assay - Trace Au, ICP-OES finish (50g charge) (ppm)

Parameter	Sample ID	REPLICATE #1		RPD									
		Original	Replicate										
Au	3049898	0.003	0.007										



AGAT Laboratories

Quality Assurance - Certified Reference materials
 AGAT WORK ORDER: 21T810750
 PROJECT:

5623 McADAM ROAD
 MISSISSAUGA, ONTARIO
 CANADA L4Z 1N9
 TEL (905)501-9998
 FAX (905)501-0589
<http://www.agatlabs.com>

CLIENT NAME: ROBERT DILLMAN

ATTENTION TO: ROBERT DILLMAN

(202-552) Fire Assay - Trace Au, ICP-OES finish (50g charge) (ppm)

Parameter	CRM #1 (ref.GS5X)													
	Expect	Actual	Recovery	Limits										
Au	5.04	5.15	102%	90% - 110%										



Method Summary

CLIENT NAME: ROBERT DILLMAN

AGAT WORK ORDER: 21T810750

PROJECT:

ATTENTION TO: ROBERT DILLMAN

SAMPLING SITE:

SAMPLED BY:

PARAMETER	AGAT S.O.P	LITERATURE REFERENCE	ANALYTICAL TECHNIQUE
Solid Analysis			
Sample Login Weight	MIN-12009		BALANCE
Au	MIN-12006, MIN-12004		ICP/OES
Crush-Pass %			BALANCE
Pul-Pass %			BALANCE

Expenses: J. Renaud, R. Dillman

Black River North Property: September 16, 2021 + July 22, 2022 report

		Charge	HST	Prorated	Total
Food					
Gas					
September 15, 2021	Trudy's Place, Gilmour	150.01	17.26	132.75	
Truck		km	rate		
September 11 & 17, 2021	Delaware to Bear Ridge Campground, Coe Hill and return	908 km	@ 0.45/ km	408.62	
September 11 – 16, 2021	Bear Ridge Campground to Property & return 6 days BRS & BRN	668 km	@ 0.45/ km	300.58	
Accommodations					
September 11 – 17, 2021	Bear Ridge Campground, Coe Hill	706.25	81.25	625.00	
Work					
September 16, 2021	Prospecting 2 men 1.5 hours @ \$50/hr.	150	0	150	150
Report					
July 18 – July 22, 2022	3 days \$500/ day July 22/ 22 Report	1500	0	1500	1500
Assays					
December 13, 2021	6 Assays @ \$35.17 /assay + HST	238.43	27.43	211	211

Expenses for Traverses: September 11 to 17, 2021

1.5 hours Prospecting	2 men x 1.5 x \$50 / hour	150.00
6 Assays	6 x \$35.17	211.00
Report	3 days x \$500/ day	<u>1,500.00</u>
		\$1,861.00