

We are committed to providing [accessible customer service](#).

If you need accessible formats or communications supports, please [contact us](#).

Nous tenons à améliorer [l'accessibilité des services à la clientèle](#).

Si vous avez besoin de formats accessibles ou d'aide à la communication, veuillez [nous contacter](#).



**2022 Work Report**  
**ATIKOKAN GOLD PROJECT**  
**LiDAR and Orthophoto Survey**  
**Atikokan Area, Ontario**  
**Solstice Gold Corp.**

**Work Conducted:** May 14, 2022

**NTS:** 052B14, 052B15, 052G02, 052G03

**Date Submitted:** August 3, 2022

**Work conducted by:**

KBM Resources Group

Work Report prepared by KBM Resources Group

**Report prepared by:**

Bruce A. Barham, MSc., P.Geo.

Senior Geologist

**For:** Solstice Gold Corp.

## Table of Contents

Table of Contents.....	2
List of Figures .....	2
List of Tables.....	2
1.0 SUMMARY.....	3
2.0 INTRODUCTION – EXPLORATION TARGET .....	3
3.0 PROPERTY DESCRIPTION, LOCATION .....	5
4.0 ACCESS, PHYSIOGRPAHY, CLIMATE, LOCAL RESOURCES .....	5
5.0 HISTORY.....	7
6.0 REGIONAL AND LOCAL GEOLOGY .....	11
6.1 Regional and Property Geology .....	11
6.2 Mineralization .....	13
7.0 EXPLORATION.....	17
8.0 INTERPRETATION .....	17
9.0 RECOMMENDATIONS.....	17
10.0 REFERENCES .....	18
APPENDIX A: Statement of Qualifications.....	20
APPENDIX B: Report .....	22
APPENDIX C: Claim List.....	23

## List of Figures

Figure 1: Atikokan Gold Project Location.....	4
Figure 2: Atikokan Gold Project Claims .....	6
Figure 3: Atikokan Area, Regional Geology .....	10
Figure 4: Ontario Geological Survey DEM (4A), Lidar Survey (2022: This Report) (4B) .....	14
Figure 5: Detail of Orthophotography (5A) and LiDAR (5B).....	15
Figure 6: Orthophotography of Atikokan Property with Flight Lines.....	16

## List of Tables

Table 1: Atikokan Gold Project LiDAR and Orthophoto Summary.....	3
Table 2: Marmion Batholith Historic Production – Hammond Reef Resources .....	7
Table 3: Atikokan Gold Project – Assessment Records.....	9
Table 4: Geologic Relationships, Hammond Reef (Modified from Backeberg, 2015) .....	12
Table 5: Costs of Recommended Future Work .....	17

## 1.0 SUMMARY

This report presents LiDAR and orthophoto images captured for Solstice Gold Corp over its Atikokan Gold Project located 26 km east of Atikokan, Ontario. Previous exploration results completed in the area of the property are also described. Additional exploration beginning with geological mapping and prospecting is recommended.

A summary of the parameters of the LiDAR and orthophoto taken from the technical report in Appendix B is provided in Table 1 below.

**Table 1: Atikokan Gold Project LiDAR and Orthophoto Summary**

LiDAR Acquisition Specifications	Units
Laser scanner manufacturer and model	Riegl VQ-780ii
Laser pulse repetition frequency (PRF)	1702 kHz
Laser scan frequency	208 Hz
Flying height	1540 m above ground level
Flying speed	67 m/s
Maximum scan angle	+/- 30o from nadir (60o field of view)
Pulse density (average per swath)	9.54 points per m <sup>2</sup>
Flight Lines	000-180 degrees, 26 total

## 2.0 INTRODUCTION – EXPLORATION TARGET

This is the third report submitted by Solstice Gold Corp. (Solstice) on its recently acquired Atikokan Gold Project covering 32,612 ha between Atikokan and Upsala, Ontario. Solstice is a gold explorer with expertise in the Precambrian geology of Northern Ontario and Nunavut, Canada. The Atikokan Gold Project claims cover underexplored portions of the Marmion Batholith and has only seen limited exploration in the past. The Atikokan Gold Project is transected by structures parallel or on strike with structures associated with recent gold discoveries in the Mercutio/Bedivere Lakes area. Solstice has initiated the exploration of the Atikokan Gold Project for its lode gold potential.

This report introduces the reported results of LiDAR and orthophotos captured by KBM Ltd. of Thunder Bay, Ontario from May 14 to 15, 2022. A technical report prepared by Shawn Mizon (KBM Consulting Ltd, June 2022) provides the details of the survey. Figure 1 shows the location of the Atikokan Gold Project.

Personnel for the 2022 LiDAR and orthophoto were provided by the contractor, KBM Contracting Ltd, and details are provided in Appendix B. This report is prepared by B. Barham, P.Ge, who assisted in the design of the survey and prepared the maps for this report.



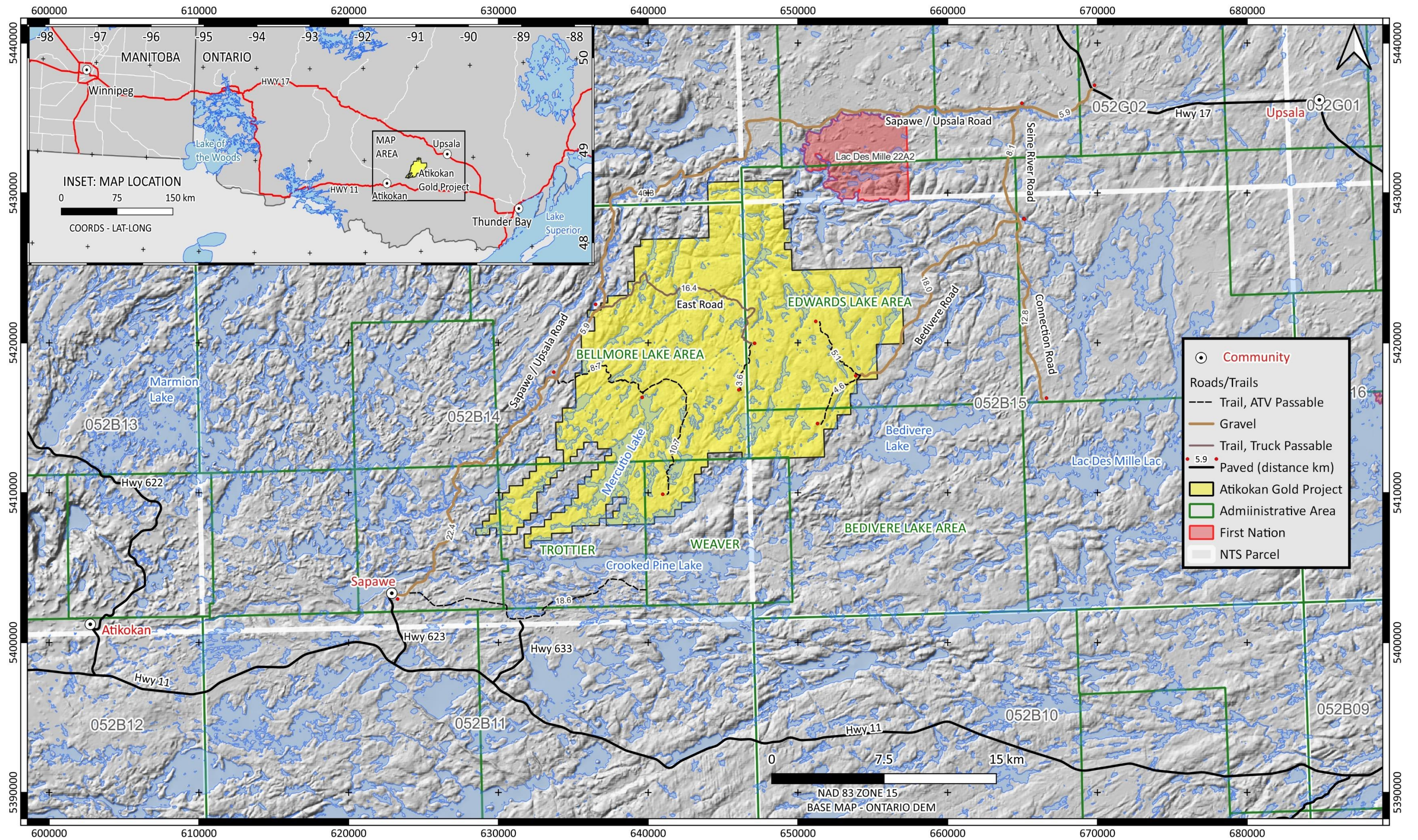


Figure 1: Atikokan Gold Project Location



### **3.0 PROPERTY DESCRIPTION, LOCATION**

The Atikokan Gold Project is located about 26 kilometers east-northeast of the Atikokan townsite (Figure 1) and consists of single cell and multicell claims as shown on Figure 2 and listed in Appendix C.

The Atikokan Gold Project consists of 642 claims, including 583 single-cell mining claims and 59 multicell mining claims. All claims are active, 100% held by (10004221) Solstice Gold Corp. and recorded in the Ontario's MLAS.

Twenty-nine cell claims (listed in Appendix C – Note \*) were registered By Traxxin Resources Inc. (10002434) between July 30, 2020 and September 11, 2020. The claims were subject to different option and sales agreements with Traxxin Resources Inc., Gravel Ridge Resources Ltd. and 1544230 ONTARIO INC. whereby Solstice Gold Corp. became 100% owner and claims were transferred 100% to Solstice Gold Corp. by January 6, 2022.

Twelve cell claims (listed in Appendix C – Note \*\*) were registered by PERRY ENGLISH (129617) between September 23, 2021 and October 2, 2021 and transferred 100% to (10004221) Solstice Gold Corp on January 7, 2022. These cell claims are subject to an active option agreement dated December 10, 2021 between 1544230 ONTARIO INC., a company owned by Perry English, and operator Solstice Gold Corp.

Five hundred eighty-eight cell claims (listed in Appendix C – Note \*\*\*) were registered by (10004221) Solstice Gold Corp. Four hundred seventy-one of these cell claims were registered on September 24, 2021 with one hundred seventeen registered on December 8, 2021.

Eight multicell-claims (listed in Appendix C – Note \*\*\*\*) were registered by Martin Tunney (10003651) on March 31, 2022 and transferred to (10004221) Solstice Gold Corp on April 8, 2022.

Twenty single-cell claims were registered by Martin Tunney (10003651) on March 31, 2022 and transferred to (10004221) Solstice Gold Corp on April 8, 2022 and amalgamated by Solstice Gold into one multicell-claim June13, 2022(listed in Appendix C – Note \*\*\*\*\*).

Ninety-seven single claims were registered (10004221 Solstice Gold Corp) by March 31, 2022 amalgamated by Solstice Gold into 4 multicell-claim June13, 2022 (listed in Appendix C – Note \*\*\*\*\*).

### **4.0 ACCESS, PHYSIOGRPAHY, CLIMATE, LOCAL RESOURCES**

Atikokan and Upsala, Ontario are full-service communities where lodging, groceries, field gear, and shipping can be arranged. Vehicles can be rented in Thunder Bay, Ontario, about 2 hours' drive to the east-southeast.

The Atikokan Gold Project is located within the Thunder Bay Mining Division in northwestern



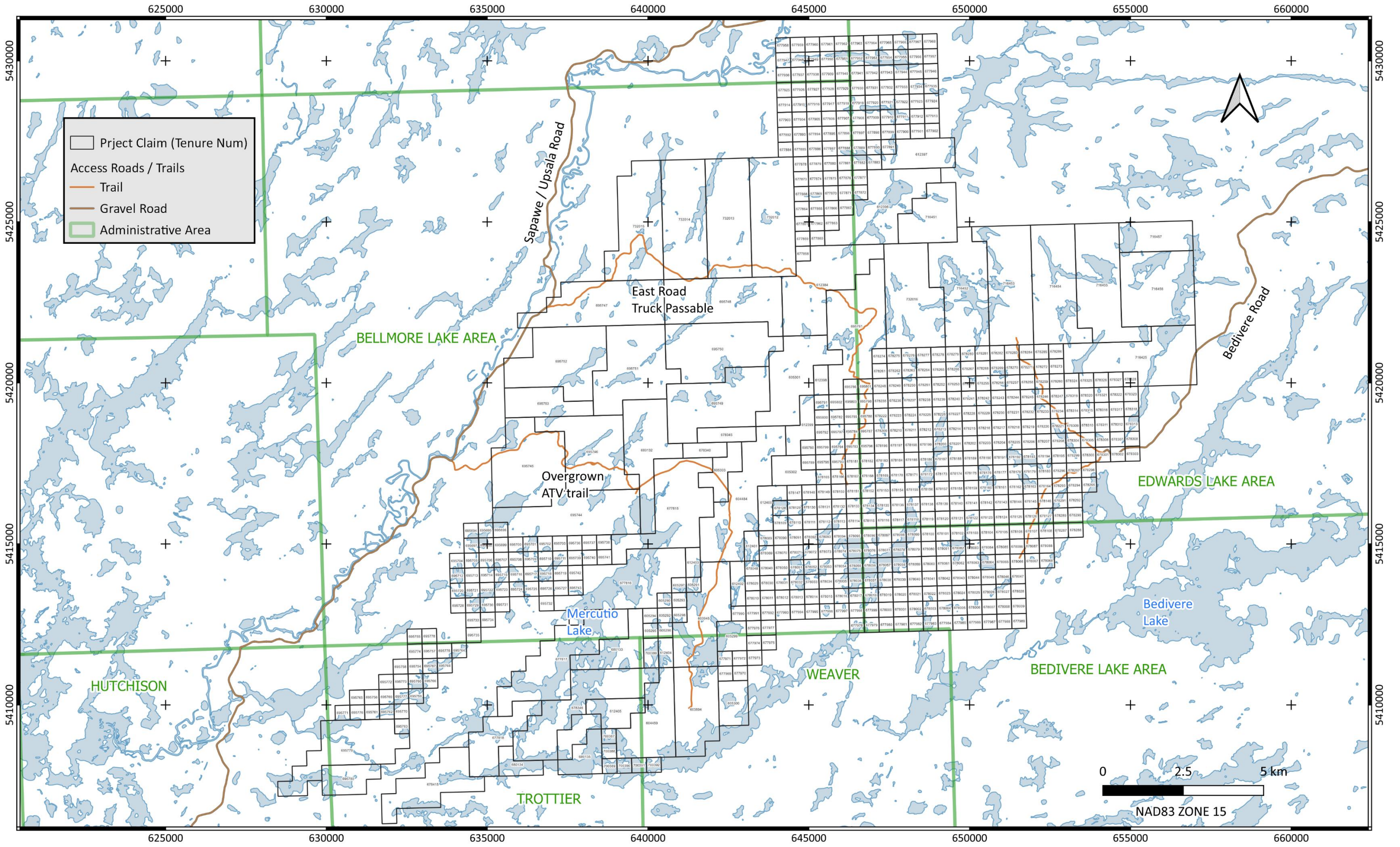


Figure 2: Atikokan Gold Project Claims



Ontario, approximately 27 km northeast of the town of Atikokan. From Atikokan travel to Sapawe via Highway 11 and Route 623 (Figure 1). From Sapawe, follow the Sapawe / Upsala Road for 22.4 km to where an ATV passable trail leads east to Mercutio Lake. To access the northern part of the Property, follow the Sapawe / Upsala Road another 5.9 km to where the East Road, recently brushed and truck passable, leads east. From Upsala, follow Highway 17 west to the turn off for the Sapawe / Upsala Road. The East Road turn off is 46 km from the turn off on Highway 17. The eastern part of the property can be accessed from Upsala by turning south on the Seine River Road 5.9 km west of the Highway 17 turn off.

Follow the Seine River Road for 8.1 km south to the intersection with the Bedivere Lake Road. Follow the Bedivere Lake Road southwest for 18 km to the end of the road. Here the road has been trenched but ATV passable trails continue into the property.

The Property can also be accessed by float plane from the airbase in Atikokan. Larger lakes such as Mercutio Lake provide good access to the southern part of the property but larger lakes accessible by float plane are rare in the northern part of the property.

The Property drains west towards Lake of the Woods and then to the north through Lake Winnipeg to Hudson’s Bay. The landscape consists of gently rolling topography with vegetation typical of mixed mature and logged boreal forest. The Property is covered by unconsolidated glacial till and glacio-fluvial sand. Outcrop exposure is moderate and common on lakeshores.

Climate in the area is typical of Northern Ontario, with cold winters and warm summers. Average January minimum temperatures range from -18°C to -32°C, and average July temperatures are between 24°C and 32°C. Mapping, mechanized stripping, and soil sampling activities are best performed from spring to fall, whereas drilling can occur any time of the year.

## 5.0 HISTORY

The map of Stone (2010) includes a table listing historical mining activity in the map area with details taken from Wilkinson’s (1982) review of Gold Deposits of the Atikokan area and other references listed on his map. Four properties are listed from within the Marmion Batholith with historic gold production (Table 2).

**Table 2: Marmion Batholith Historic Production – Hammond Reef Resources**

PRODUCTION					
Property	Year(s)	Commodity	Tonnes	Grade g/t Au	Au Oz
Sapawe	1964-66	Au	38,009	5.09	6198
Sunbeam	1904	Au	589	14.7	277



Sawbill	1897-99	Au	2,192	8.6	604
	1940-41	Au	2,679	6.51	559
Hammond Reef	1897-98	Au	2,072	7.2	478
<b>HAMMOND REEF RESOURCE (Agnico-Eagle Mines Ltd. 2021)</b>					
Proven / Probable	2021	Au	123,473,000	0.84	3,323,000
Measured / Indicated	2021	Au	133,367,000	0.54	2,298,000

The locations of these past gold producers are shown on Figure 3. The potential of the Marmion Batholith is shown by the large low-grade resource listed by Agnico-Eagle Mines Ltd (2021) for the Hammond Reef Gold Deposit (Table 2). This deposit was largely delineated by Osisko Mining Corporation with Agnico-Eagle Mines Ltd acquiring a 100% interest in 2018.

Fenwick (1976) and Wilkinson (1982) describe Marmion-type gold deposits as formed by quartz veins hosted by shear zones associated with north-east trending lineaments. Wilkinson (1982) further indicates that carbonatized, sericitized and sheared lenses of massive trondhjemite adjacent to and within north-east lineaments are favoured host rocks. Complex gneissic rocks within the batholith are less favoured. A comprehensive discussion of these topics can be found in Wilkinson (1982).

In the Bedivere Lake area, prospecting and sampling by Traxxin Resources Inc. (and associated companies) began in 2011 and culminated in the 2016 discovery of a quartz vein with visible gold assaying 1,281 g/t Au (41 oz/t Au, Puumala et al 2017, Figure 3). This property is currently held in joint venture with Bold Ventures Inc. and Lac Des Mille Lac First Nations where recent results continue to expand a northeast trending gold zone (Bold Ventures, 2022).

West of the Atikokan Gold Project, Traxxin Resources Inc. prospected their Melema West Property beginning in 2017 resulting in the discovery of two new gold zones (Schneider and Frymire, 2018). The property is under joint venture with Agnico-Eagle Mines Ltd. and recent channel sampling of 4.29 g/t Au over 4.4 meters (Figure 3) has been reported by Dix (2021).

These recent results are from quartz veins in carbonatized north-east trending structures confirming the observations of Fenwick (1976) and Wilkinson (1982). This Marmion deposit description, modified by later work, is the target of exploration for Solstice Gold Corp.

Other assessment records for the Atikokan Gold Project are listed on Table 3.

**Table 3: Atikokan Gold Project – Assessment Records**

<b>Year</b>	<b>Record</b>	<b>Sponsor</b>	<b>Target</b>	<b>Note</b>
1978	52B155E0014	Rio Tinto	Gold, Base Metals	Airborne Magnetometer Survey
1982	52G03SE0016	Mining North Explorations Ltd.	Gold, Base Metals	Airborne VLF-EM, Magnetometer
1985	52B14SE0017	Interquest Resources Corporation	Gold, Base Metals	Airborne VLF-EM, Magnetometer
1989	52B14SE8115	Rogi Exploration	Gold, Base Metals	Airborne VLF-EM, Magnetometer
1989	52B155W0003	MCS Capital Ltd	Gold, Base Metals	Airborne VLF-EM, Magnetometer
1992	52G10NW0001	Southampton Ventures Inc	Kimberlite	Lake Sed Anomalies, Magnetic spot highs, 6 Winkie DH - Negative
1999	MRD043	Ontario Geological Survey	General	Atikokan-Lumby Lake Area - Lake Sediment Geochemistry
2003	GDS1029	Ontario Geological Survey	General	Atikokan - Mine Centre - Airborne VLF-EM, Magnetometer
2012	20000006569	J. Clark Prospector	Gold	Lake Sediment Gold Anomalies, Lost Moose Claims



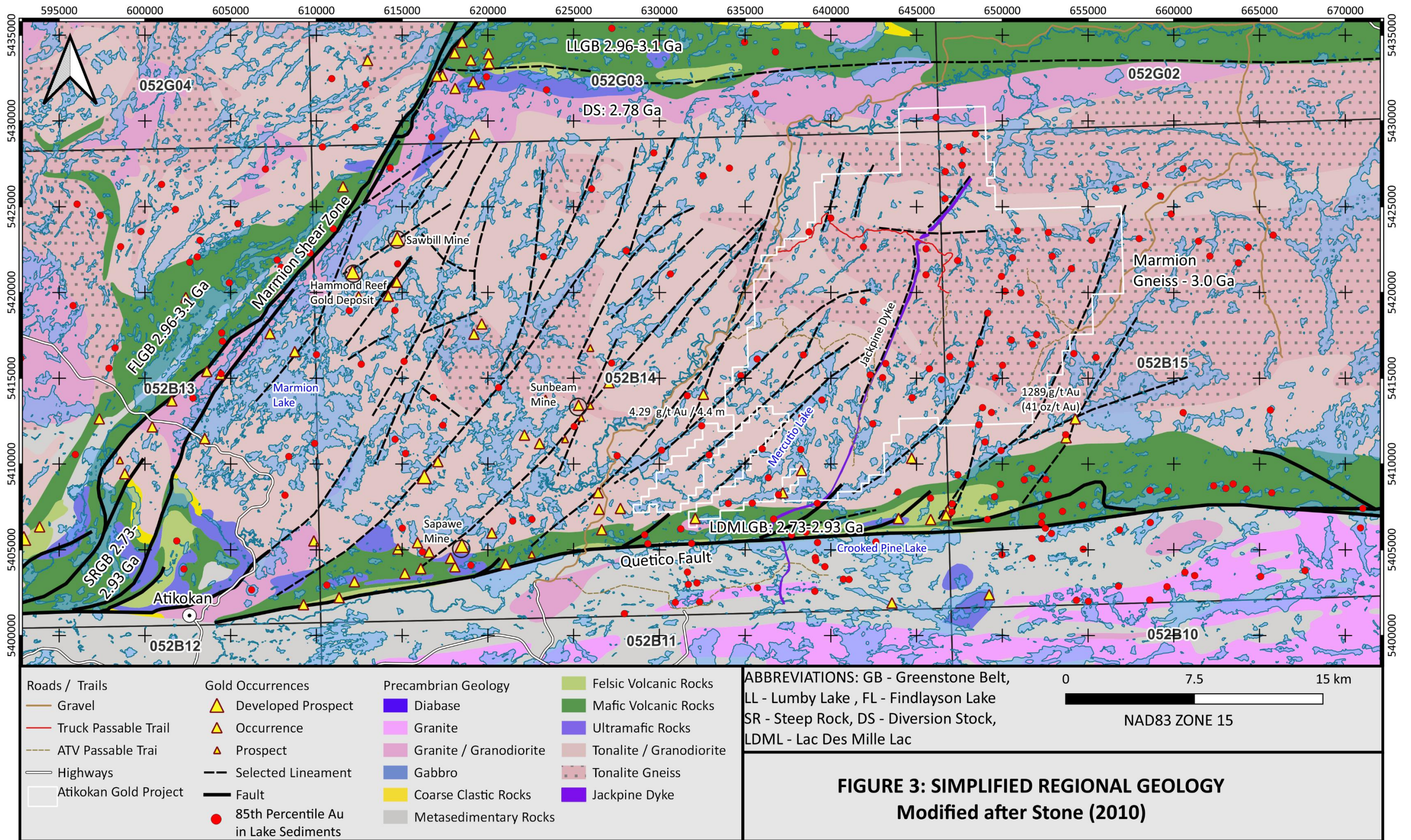


Figure 3: Atikokan Area, Regional Geology



Very little work has been filed within the boundaries of the Atikokan Gold Project. Exploration has focused on the Lac des Mille Lacs greenstones with airborne surveys sometimes covering the southern claims of the current Atikokan Gold Project. This data is not covered further as the data is supplanted by Ontario Geological Survey magnetometer – EM survey GDS1029 (2003) that provides continuous high-quality coverage of the property. This survey is reviewed later in this report. In 2006, Southampton Ventures Ltd. tested potential kimberlite targets on the basis of lake sediment chemistry and bulls-eye magnetic anomalies. Six Winkie drill holes were drilled to test for kimberlite with negative results (Boyd, 2006). Puumala et al (2017) drew attention to a cluster of gold in lake sediment anomalies (referred to as the Lost Moose anomalies) that Clark (2012) investigated. Clark (2012) confirmed the gold in lake sediment anomalies but was unable to locate a bedrock source.

The LiDAR and orthophoto described in this report was initiated to refine the resolution of prospective structures within the Marmion Batholith.

## **6.0 REGIONAL AND LOCAL GEOLOGY**

### **6.1 Regional and Property Geology**

Important bedrock geology maps for the Atikokan area were published by Shklanka (1972), Fenwick (1976), Pirie (1978) and more recently by Stone (2010). Stone (2010) is compiled and modified from years of mapping (Stone 2005, Stone 2008a, 2008b, 2008c). The source maps are important as they typically include outcrop locations not shown on Stone (2010). Some mappers such as Fenwick (1976) include an interpretation of lineaments along with a discussion in the accompanying text. Lineaments shown on Figure 3 are a combination of those highlighted on historic maps, private company press releases, and include some interpreted from a preliminary interpretation of provincial airborne magnetic and digital elevation data performed by the author.

The Marmion Batholith forms part of the Marmion Terrane, a subarea of the granite-greenstone Wabigoon Subprovince. The Wabigoon Subprovince forms a fundamental tectonic block of the Superior Province of the Canadian Shield (Percival, 2007). The Marmion Batholith consists of +/- 3.0 Ga principally tonalite to granodiorite foliated basement complex divided into gneissic hornblende-biotite variants and more massive granitoids with minor ferromagnesian minerals (Figure 3). Surrounding volcanic dominated greenstones of the Lumby Lake, Findlayson, Steep Rock and Lac des Mille Lacs greenstone belts have similar maximum ages. Chemical sediments dominated by carbonate and iron



formation occur locally with some providing important sources of historic iron ores (Shklanka, 1972). Both Archean and Proterozoic diabase dykes are widely reported but few are shown on any published maps.

The thesis of Backeberg (2015) documents the geologic history of the Findlayson Lake Greenstone Belt and Marmion Batholith and integrates the results with a detailed study of the mineralization at the Hammond Reef Gold Deposit. Table 4 summarizes relationships documented by Backeberg (2015).

**Table 4: Geologic Relationships, Hammond Reef (Modified from Backeberg, 2015)**

	PRIMARY	WABIGOON		SUTURE FLGB-MT	SUPERIOR ASSEMBLY		
+/- Ga	3.00	2.93		2.78			2.68
Defm	FINDLAYSON	D1	D2	D3	D4		QUETICO FAULT
Defm Detail		Schist	Sin Trans	Flat	brittle faults, reactivation		
Short Dir			NNW	NW	NW		
Chlorite			Chlorite				
	MARMION	MSZ	7-13 km throw	Suture	minor movement		
GOLD					Disseminated	Veins	
Sericite					sericite		
Chlorite				Chlorite			
Defm			Gneissosity	D3	D4		
Defm Detail			Mineral Align	Flat	Fault	Foliation	
Short Dir			NW		NW	NW	
ABBREVIATIONS: FLGB - Findlayson Lake Greenstone Belt, MT - Marmion Terrane, Defm - Deformation Dir -- Direction, MSZ - Marmion Shear Zone, Align - Alignment, Sin Tran - Sinistral Transpression, Flat - Flattening <b>Compiled and Modified after Backeberg (2015).</b>							QUETICO METASEDIMENTS
							QUETICO FAULT
							QUETICO SEDIMENTS

Backeberg (2015) provides plagioclase-hornblende pair thermobarometry suggesting that prior to D3 the Findlayson Lake Greenstone Belt (FLGB) was buried some 10 km deeper than the Marmion Batholith. D3 involved widespread retrogressive chloritization and dip slip movement of the FLGB up relative to the Marmion Batholith. This deformation was accompanied by the intrusion of the Diversion Stock at 2.78 Ga after which the Marmion Shear Zone is dormant and alteration becomes localized in anastomosing sericite-rich zones that record flattening (D4). Lower grade disseminated gold is introduced with pyrite within the sericitic zones. Late D4 is marked by higher grade quartz carbonate veining associated with west directed thrusting. At Hammond Reef, the Az 050° east-dipping Lynx Head Thrust Fault brings unaltered Marmion granitoids over chlorite and sericite altered granitoids. Backeberg (2015) remarks on the persistent NE-SW lineaments within the Marmion Batholith that are parallel to the Lynx Head Fault that could be surface expressions of similar thrust faults recording late NW-SE shortening.

The Marmion Batholith's south contact is marked by the crustal scale Quetico Fault with metasedimentary rocks of the +/- 2.7 Ga Quantico Subprovince to the south. Stone (2010) lists many authors who have examined this structure stating that most agree the fault postdates other deformation and has dextral displacement of the order of 150 kilometers. This fault zone can be up to 1 km in width and is characterized by intense and steeply dipping foliations.

On lithoprobe sections, the Quetico metasedimentary belt is modeled as a thin wedge overlying shallowly north dipping reflectors representing the upper surface of the underlying Wawa subprovince or related oceanic type crust (Percival et al 2006). Beckeberg (2015), Stone (2010) and Percival (2006) agree the Quetico Fault is part of the surface expression of the +/- 2.7 Ga north dipping subduction of the Wawa subprovince beneath the Wabigoon (Marmion) Terrane.

Little is known beyond what is shown on regional maps. Stone (2010) indicates several splay faults rooted on the Quetico Fault arcing to the north-east into the Atikokan Gold Project. A central magnetic anomaly within the property has been identified as corresponding to a north-east trending mafic dyke (Jackpine Dyke).

## **6.2 Mineralization**

The Atikokan Gold Project is flanked by recent discoveries that support the basic properties of a Marmion type gold occurrence as defined by Wilkinson (1982) and whose basic characteristics are reiterated by Beckeberg (2015). The area under claim has not had any substantial exploration work filed for assessment. North-east trending lineaments coupled with lake sediment anomalies suggest the possibility for the discovery of new mineralized zones. Recent geophysical surveys completed by SHA Geophysics Ltd over the Project show that a magnetic feature trends north north-east across the Project (Barham, 2022a). Examination of this anomaly identified a mafic dyke (Jackpine Dyke) with reports of carbonate altered outcrops with quartz veins and pyrite, which prompted the initial acquisition of the claim group. The Ontario Geological Survey DEM (Figure 4a) reveals north-east linear structural trends, which are further delineated by the LiDAR (Figure 4b). Figure 5 shows a detailed area of the property (identified in Figure 4), presented in both orthophoto (Figure 5A) and LiDAR (Figure 5B). Finally, the extent of the orthophotography as well as the flight lines are shown in Figure 6. Gold in lake sediment anomalies is clearly aligned along some structures. Structures mapped by Stone (2010) splay off the Quetico Fault trending into the Project. Additional interpretation and ground mapping and prospecting along north-east trends and ground truthing lake sediment anomalies is required.



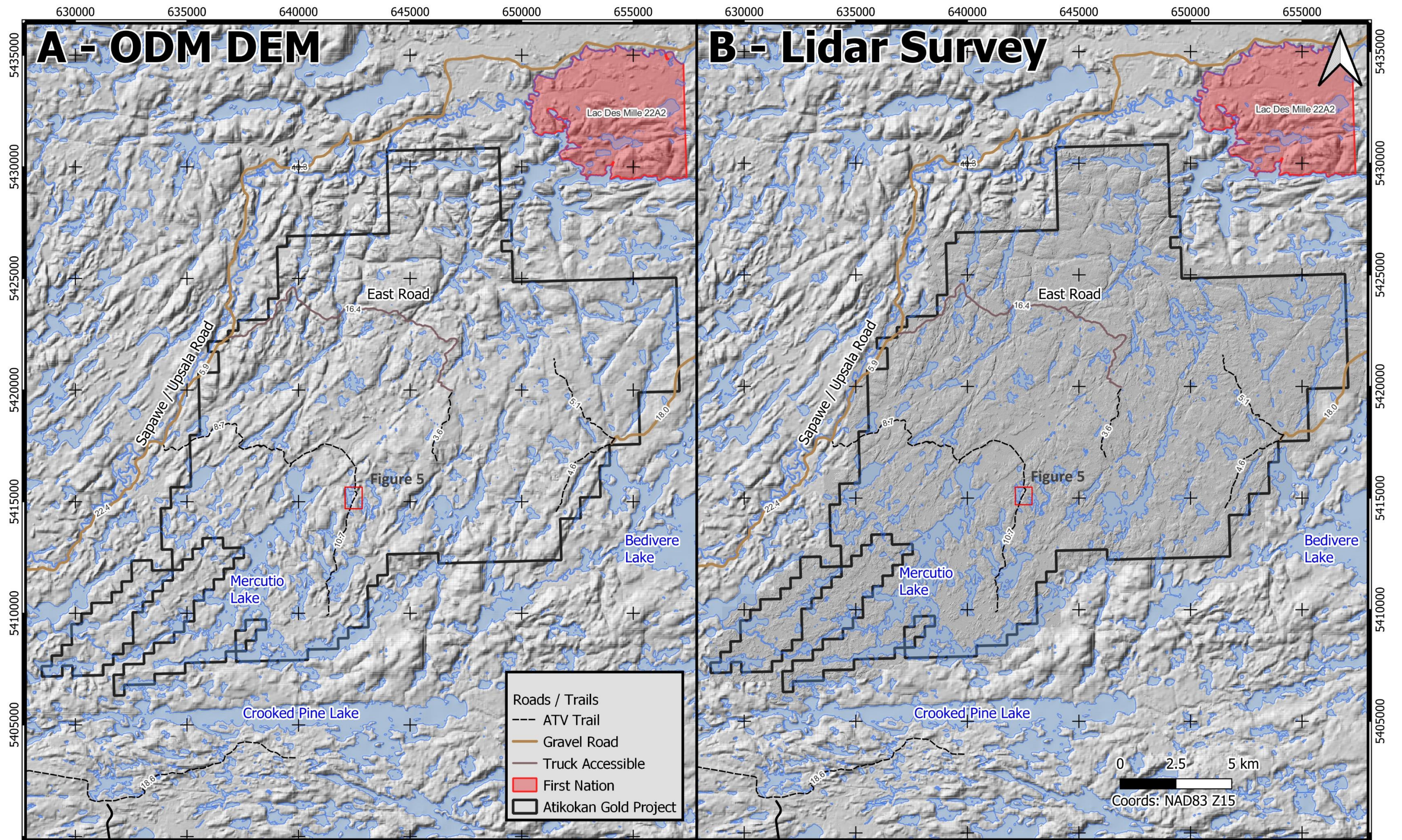


Figure 4: Ontario Geological Survey DEM (4A), Lidar Survey (2022: This Report) (4B)



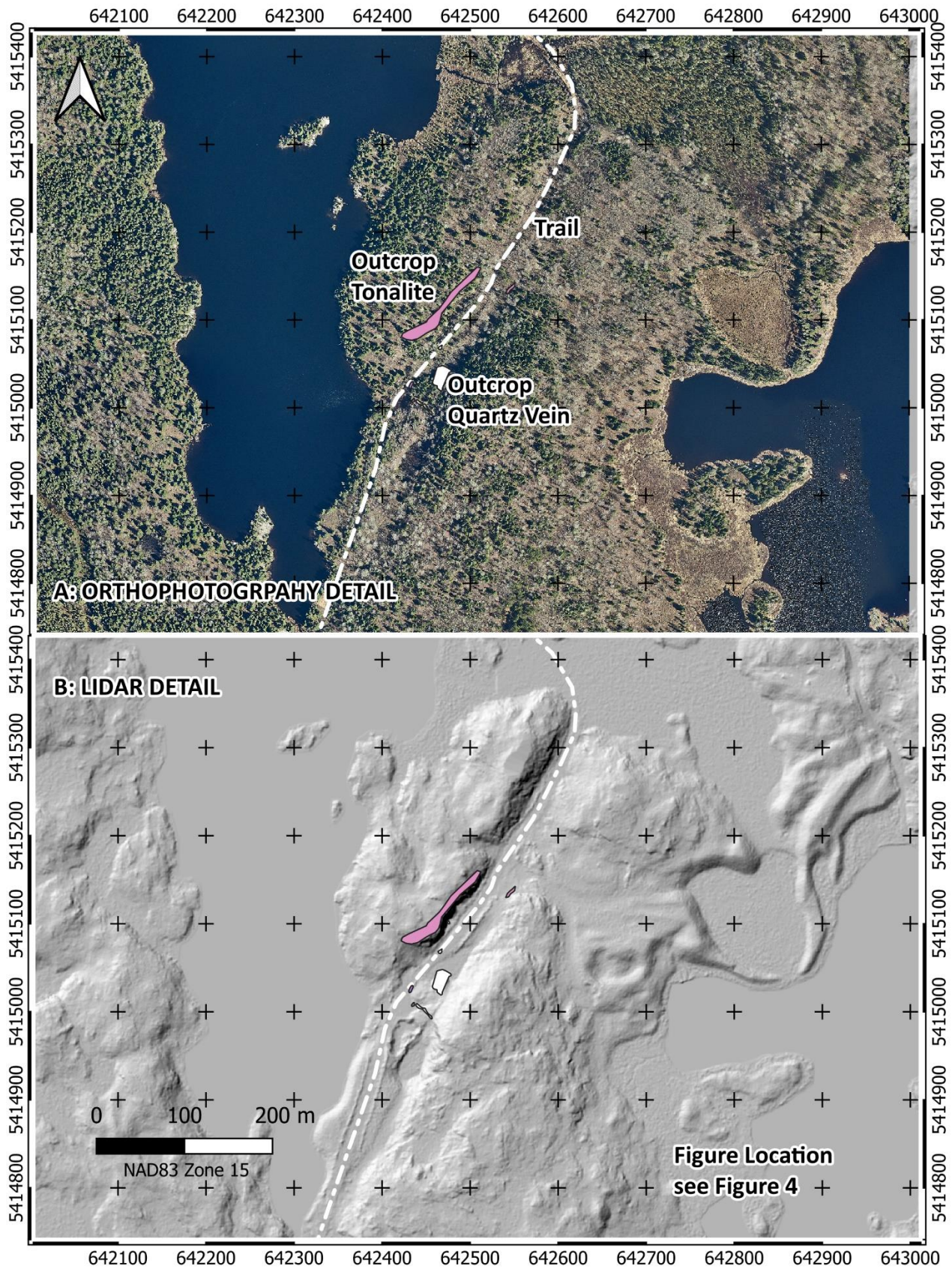


Figure 5: Detail of Orthophotography (5A) and LiDAR (5B)



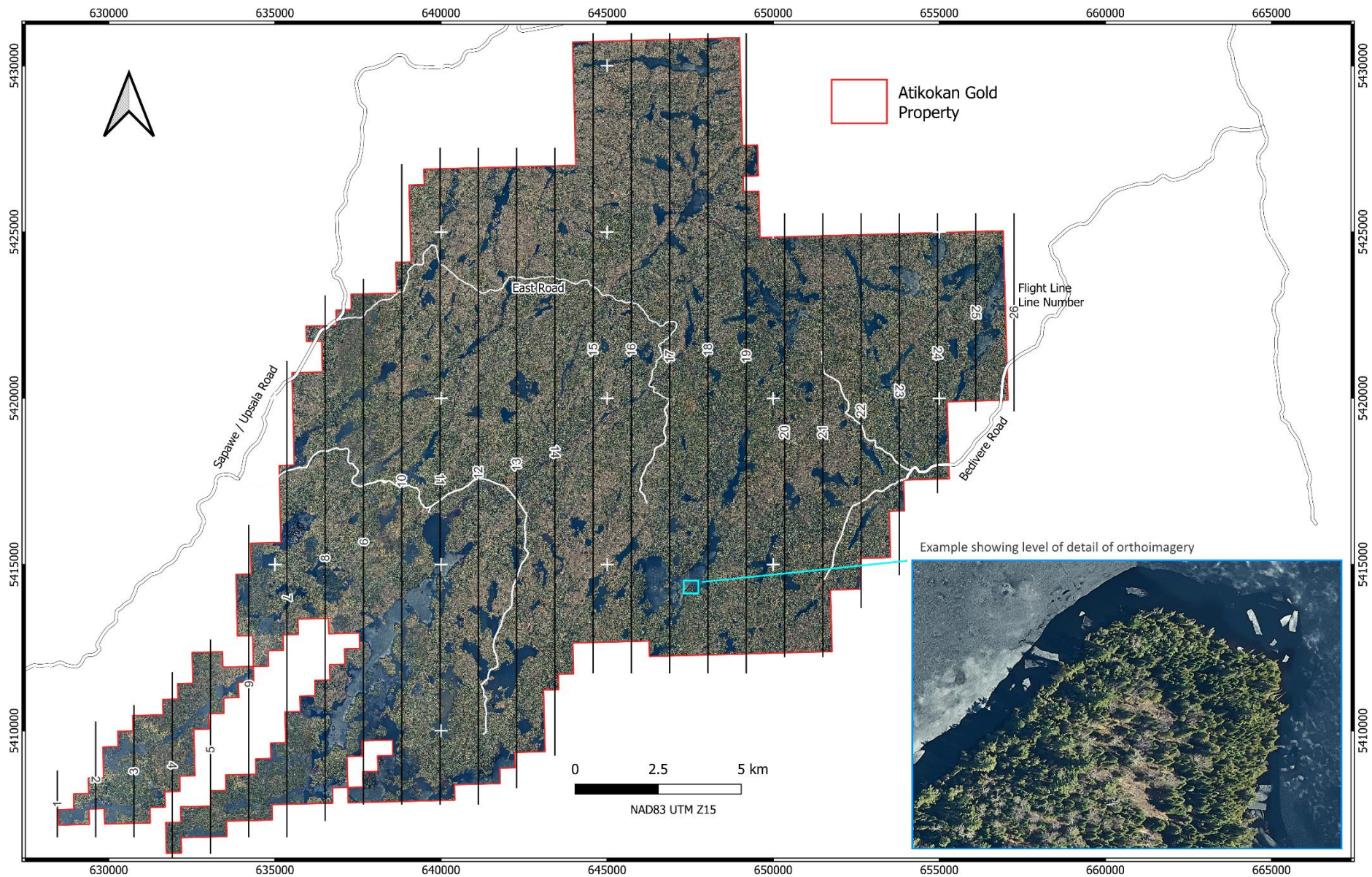


Figure 6: Orthophotography of Atikokan Property with Flight Lines

## 7.0 EXPLORATION

Exploration of the property is limited to the historical description provided above. The airborne magnetic survey for which an assessment report was filed in May 2022 constitutes the initial exploration conducted by Solstice Gold Corp. Appendix B of this report (Mizon, 2022) describes the LiDAR and orthophoto and the resulting interpretation. A summary of KBM's flight specifications is provided in Table 1.

## 8.0 INTERPRETATION

LiDAR and orthophotography are used in many contexts to identify prospective lineaments and structures that, in the context of this Project, could be associated with potential gold targets. From preliminary analysis, it is clear that the sharply defined north-east trending lineaments identified in the 2021 geophysical magnetic survey are identifiable in the LiDAR, as these structural features have topographic expression. The digital elevation products generated from the LiDAR await more detailed examination in conjunction with geophysical surveys described above (SHA Geophysics) to further identify surface expressions of structures with potential for gold exploration.

## 9.0 RECOMMENDATIONS

The LiDAR and orthophoto provide further detail of surface expressions of potential structure, which adds to the already powerful base for further exploration of the Atikokan Gold Project. Ground geological mapping and prospecting are recommended to aid in the development of a comprehensive exploration program. North-east and north-north-east lineaments require mapping and prospecting. Lake sediment anomalies help delineate prospective lineaments.

Induced polarization test surveys should also be considered to identify buried sulfidic segments of prospective targets. Wilkinson (1982) cautions that mineralized fault structures within the Marmion Batholith rarely outcrop.

Costs of the recommended work are included in Table 5.

**Table 5: Costs of Recommended Future Work**

<b>Work Program</b>	<b>Approximate Cost (\$CDN)</b>
Prospecting & Mapping Program	\$200,000
Ground IP Survey	\$100,000
<b>TOTAL</b>	<b>\$300,000</b>



## 10.0 REFERENCES

- Backeberg, N. R. (2015)** – Damaged Goods, Regional deformation history and structural controls on the Hammond Reef gold deposit, Atikokan, Ontario, thesis submitted in partial fulfilment of a Doctor of Philosophy, McGill University, 2015
- Barham, B.A., 2022a.** – Work Report, Atikokan Gold Project, Helicopter Borne Airborne Magnetic Survey, Atikokan Area, Ontario. Report prepared for Solstice Gold Corp.
- Barham, B.A., 2022b.** – Prospecting Work Report, Jackpine Claims, Gold and Base Metal Prospecting and Geological Mapping, Atikokan Area, Ontario. Report prepared for Solstice Gold Corp.
- Boyd, T. (2006)** – Exploration Program, Marmion Project, Airborne Geophysical Survey, Geological Investigation and Drilling, District of Rainy River, Thunder Bay Mining Division, NTS 52B/14 and 52B/15, Southampton Ventures Inc.
- Clark, J.G. (2012)** – Prospecting and Sampling of the Lost Moose Lake Property Claims, Chris Larrett, Edwards Lake Area, Thunder Bay Mining Division, ODM Assessment Report 20009400
- Dix, C. (2021)** – 2020 Assessment Report on the Melema Lake Property, Prospecting and Channel sampling, Structural Interpretation, Sapawe, Ontario, Thunder-Bay South Mining Division, NTS 052B14/052G03, report prepared for Agnico Eagle Mines Ltd.
- Fenwick, K.G.** 1976. Geology of the Finlayson Lake area, District of Rainy River; Ontario Division of Mines, Report 145, 86p.
- GDS1029 (2003)** Ontario airborne geophysical surveys, magnetic data, Atikokan–Mine Centre area; Ontario Geological Survey, Geophysical Data Set 1029
- Dyer, R.D. (1999)** – Atikokan Area High Density Lake Sediment and Water Geochemical Survey, Northwestern Ontario area: New Gold and PGE Exploration Targets, Ontario Geological Survey Open File Report, MRD 043
- Mizon, S. (2022)** – LIDAR Survey – Acquisition and Processing Report, Atikokan Property, Ontario. Prepared by KBM Resources Group for Solstice Gold Corp.
- Percival, J.A., 2007** – Geology and metallogeny of the Superior Province, Canada, *in* Goodfellow, W.D., ed., Mineral Deposits of Canada: A Synthesis of Major Deposit-Types, District Metallogeny, the Evolution of Geological Provinces, and Exploration Methods: Geological Association of Canada
- Percival J.A., M. Sanborn-Marie M., Skulski T., Stott G.M., Helmstaedt H. and White D.J. (2006)** – Tectonic evolution of the western Superior Province from NATMAP and Lithoprobe studies, Canadian Journal of Earth Sciences July 2006.
- Pirie, J. 1978** – Geology of the Crooked Pine Lake area, District of Rainy River; Ontario Geological Survey, Report 179, 73p.
- Puumala, M.A., Campbell, D.A., Paju, G.F., Daniels, C.M. Fudge, S.P., Pettigrew, T.K. and Dorado-Troughton, M. 2020.** Report of Activities 2019, Resident Geologist Program, Thunder Bay South Regional Resident Geologist Report: Thunder Bay South District; Ontario Geological Survey, Open File Report 6365, 105p.

- Puumala, M.A., Campbell, D.A., Tuomi, R.D., Fudge, S.P., Pettigrew, T.K. and Hinz, S.L.K. 2019. Report of Activities 2018**, Resident Geologist Program, Thunder Bay South Regional Resident Geologist Report: Thunder Bay South District; Ontario Geological Survey, Open File Report 6353, 109p
- Shklanka, R. 1972.** – Geology of the Steep Rock Lake area; *in* Geology of the Steep Rock Lake area, District of Rainy River; Ontario Department of Mines and Northern Affairs, Report 93, pt.1, p.1-80.
- Stone D. 2005.** – Precambrian geology, Bedivere Lake area; Ontario Geological Survey, Preliminary Map P.3523, scale 1:50 000.
- Stone, D. 2008a.** – Precambrian geology, Steep Rock Lake area (east); Ontario Geological Survey, Preliminary Map.3586, scale 1:10 000.
- Stone D. 2008b.** – Precambrian geology, Atikokan area; Ontario Geological Survey, Preliminary Map P.3349–Revised, scale 1:50 000.
- Stone D. 2008c.** – Precambrian geology, Sapawe area; Ontario Geological Survey, Preliminary Map P.3350–Revised, scale 1:50 000
- Stone, D. 2010.** – Precambrian geology of the central Wabigoon Subprovince area, northwestern Ontario; Ontario Geological Survey Open File Report 5422, 130p. Map 1:250000
- Schneider A. and Frymire M. 2018** – Melema Prospect, 2017 Prospecting Season, Traxxin Resources Inc.
- Wilkinson, S.J. 1982.** – Gold Deposits of the Atikokan Area, Ontario Geological Survey, Mineral Deposits Circular 24.

## **APPENDIX A: Statement of Qualifications**



**August 3, 2022**

I, Bruce Alexander Barham, do hereby certify that:

- 1 – I hold a Bachelor of Science, Honours in Geology from the University of Manitoba (1984) and a Master of Science, Geology from Carleton University, Ottawa, Ontario, 1987.
- 2 – I am a Professional Geoscientist (PGO number 3406) registered with the Professional Geoscientists of Ontario.
- 3 – I am employed by Solstice Gold Corp. whose head office is Suite 550 - 800 West Pender Street Vancouver, BC, Canada, V6C 2V6
- 4 – I am the author of this Technical Report on the Atikokan Gold Project, Atikokan, Ontario.
- 5 – I supervised the work reported on in this report.
- 6 – This report is complete and correct to the best of my knowledge.

Signed,



---

Bruce A. Barham, PGO

Senior Geologist

Solstice Gold Corp.

Calgary, Alberta

**APPENDIX B: Report**

**High-Resolution Heliborne Magnetic Survey  
Atikokan Gold Project, Atikokan Area  
Thunder Bay Mining Division, Ontario  
Technical Report prepared by S. Munro, BSc. April 2022**

## **APPENDIX C: Claim List**



Tenure NUM	Township	Tenure	Issue Date	Anniversary Date	Status	cell#	Work Required	Recorded Holder	Denote
603894	WEAVER	MC	2020-07-30	2022-07-30	Active	17	6800	100% (10004221) Solstice Gold Corp	*
603945	BELLMORE LAKE AREA,WEAVER	MC	2020-07-30	2022-07-30	Active	19	7600	100% (10004221) Solstice Gold Corp	*
604459	TROTTIER,WEAVER	MC	2020-08-02	2022-08-02	Active	16	6400	100% (10004221) Solstice Gold Corp	*
604484	BELLMORE LAKE AREA	MC	2020-08-03	2022-08-03	Active	25	10000	100% (10004221) Solstice Gold Corp	*
605290	BELLMORE LAKE AREA	SC	2020-08-06	2022-08-06	Active	1	400	100% (10004221) Solstice Gold Corp	*
605291	BELLMORE LAKE AREA	SC	2020-08-06	2022-08-06	Active	1	400	100% (10004221) Solstice Gold Corp	*
605292	BELLMORE LAKE AREA	SC	2020-08-06	2022-08-06	Active	1	400	100% (10004221) Solstice Gold Corp	*
605293	BELLMORE LAKE AREA	SC	2020-08-06	2022-08-06	Active	1	400	100% (10004221) Solstice Gold Corp	*
605294	BELLMORE LAKE AREA	SC	2020-08-06	2022-08-06	Active	1	400	100% (10004221) Solstice Gold Corp	*
605295	BELLMORE LAKE AREA,WEAVER	SC	2020-08-06	2022-08-06	Active	1	400	100% (10004221) Solstice Gold Corp	*
605296	BELLMORE LAKE AREA,WEAVER	SC	2020-08-06	2022-08-06	Active	1	400	100% (10004221) Solstice Gold Corp	*
605297	BELLMORE LAKE AREA	SC	2020-08-06	2022-08-06	Active	1	400	100% (10004221) Solstice Gold Corp	*
605298	BELLMORE LAKE AREA	SC	2020-08-06	2022-08-06	Active	1	400	100% (10004221) Solstice Gold Corp	*
605299	BELLMORE LAKE AREA,WEAVER	MC	2020-08-06	2022-08-06	Active	4	1600	100% (10004221) Solstice Gold Corp	*
605300	WEAVER	MC	2020-08-06	2022-08-06	Active	6	2400	100% (10004221) Solstice Gold Corp	*
605301	BELLMORE LAKE AREA	MC	2020-08-06	2022-08-06	Active	19	7600	100% (10004221) Solstice Gold Corp	*
605302	BELLMORE LAKE AREA	MC	2020-08-06	2022-08-06	Active	5	2000	100% (10004221) Solstice Gold Corp	*
605303	BELLMORE LAKE AREA	MC	2020-08-06	2022-08-06	Active	6	2400	100% (10004221) Solstice Gold Corp	*
612384	BELLMORE LAKE AREA,EDWARDS LAKE AREA	MC	2020-09-11	2022-09-11	Active	24	9600	100% (10004221) Solstice Gold Corp	*
612396	BELLMORE LAKE AREA,EDWARDS LAKE AREA	MC	2020-09-11	2022-09-11	Active	22	8800	100% (10004221) Solstice Gold Corp	*
612397	EDWARDS LAKE AREA	MC	2020-09-11	2022-09-11	Active	9	3600	100% (10004221) Solstice Gold Corp	*
612398	BELLMORE LAKE AREA	MC	2020-09-11	2022-09-11	Active	2	800	100% (10004221) Solstice Gold Corp	*
612399	BELLMORE LAKE AREA	MC	2020-09-11	2022-09-11	Active	5	2000	100% (10004221) Solstice Gold Corp	*
612400	BELLMORE LAKE AREA	MC	2020-09-11	2022-09-11	Active	4	1600	100% (10004221) Solstice Gold Corp	*
612401	BELLMORE LAKE AREA	MC	2020-09-11	2022-09-11	Active	2	800	100% (10004221) Solstice Gold Corp	*
612402	BELLMORE LAKE AREA	MC	2020-09-11	2022-09-11	Active	3	1200	100% (10004221) Solstice Gold Corp	*
612403	BELLMORE LAKE AREA	MC	2020-09-11	2022-09-11	Active	2	800	100% (10004221) Solstice Gold Corp	*
612404	WEAVER	MC	2020-09-11	2022-09-11	Active	2	800	100% (10004221) Solstice Gold Corp	*
612405	TROTTIER,WEAVER	MC	2020-09-11	2022-09-11	Active	6	2400	100% (10004221) Solstice Gold Corp	*

Tenure NUM	Township	Tenure	Issue Date	Anniversary Date	Status	cell#	Work Required	Recorded Holder	Denote
677815	BELLMORE LAKE AREA	MC	2021-09-23	2023-09-23	Active	25	10000	100% (10004221) Solstice Gold Corp	**
677816	BELLMORE LAKE AREA	MC	2021-09-23	2023-09-23	Active	25	10000	100% (10004221) Solstice Gold Corp	**
677817	BELLMORE LAKE AREA, TROTTIER	MC	2021-09-23	2023-09-23	Active	25	10000	100% (10004221) Solstice Gold Corp	**
677818	TROTTIER	MC	2021-09-23	2023-09-23	Active	12	4800	100% (10004221) Solstice Gold Corp	**
678346	TROTTIER, WEAVER	MC	2021-09-25	2023-09-25	Active	23	9200	100% (10004221) Solstice Gold Corp	**
678340	BELLMORE LAKE AREA	MC	2021-09-25	2023-09-25	Active	3	1200	100% (10004221) Solstice Gold Corp	**
678345	BELLMORE LAKE AREA	MC	2021-09-25	2023-09-25	Active	4	1600	100% (10004221) Solstice Gold Corp	**
678415	TROTTIER	MC	2021-09-27	2023-09-27	Active	16	6400	100% (10004221) Solstice Gold Corp	**
680132	BELLMORE LAKE AREA	MC	2021-10-02	2023-10-02	Active	19	7600	100% (10004221) Solstice Gold Corp	**
680133	BELLMORE LAKE AREA, TROTTIER, WEAVER	MC	2021-10-02	2023-10-02	Active	10	4000	100% (10004221) Solstice Gold Corp	**
680134	TROTTIER	MC	2021-10-02	2023-10-02	Active	4	1600	100% (10004221) Solstice Gold Corp	**
680135	TROTTIER	MC	2021-10-02	2023-10-02	Active	6	2400	100% (10004221) Solstice Gold Corp	**
677858	BELLMORE LAKE AREA	SC	2021-09-24	2023-09-24	Active	1	400	100% (10004221) Solstice Gold Corp	***
677859	BELLMORE LAKE AREA	SC	2021-09-24	2023-09-24	Active	1	400	100% (10004221) Solstice Gold Corp	***
677860	BELLMORE LAKE AREA	SC	2021-09-24	2023-09-24	Active	1	400	100% (10004221) Solstice Gold Corp	***
677861	BELLMORE LAKE AREA	SC	2021-09-24	2023-09-24	Active	1	400	100% (10004221) Solstice Gold Corp	***
677862	BELLMORE LAKE AREA	SC	2021-09-24	2023-09-24	Active	1	400	100% (10004221) Solstice Gold Corp	***
677863	BELLMORE LAKE AREA	SC	2021-09-24	2023-09-24	Active	1	400	100% (10004221) Solstice Gold Corp	***
677864	BELLMORE LAKE AREA	SC	2021-09-24	2023-09-24	Active	1	400	100% (10004221) Solstice Gold Corp	***
677865	BELLMORE LAKE AREA	SC	2021-09-24	2023-09-24	Active	1	400	100% (10004221) Solstice Gold Corp	***
677866	BELLMORE LAKE AREA	SC	2021-09-24	2023-09-24	Active	1	400	100% (10004221) Solstice Gold Corp	***
677867	BELLMORE LAKE AREA, EDWARDS LAKE AREA	SC	2021-09-24	2023-09-24	Active	1	400	100% (10004221) Solstice Gold Corp	***
677868	BELLMORE LAKE AREA	SC	2021-09-24	2023-09-24	Active	1	400	100% (10004221) Solstice Gold Corp	***
677869	BELLMORE LAKE AREA	SC	2021-09-24	2023-09-24	Active	1	400	100% (10004221) Solstice Gold Corp	***
677870	BELLMORE LAKE AREA	SC	2021-09-24	2023-09-24	Active	1	400	100% (10004221) Solstice Gold Corp	***
677871	BELLMORE LAKE AREA, EDWARDS LAKE AREA	SC	2021-09-24	2023-09-24	Active	1	400	100% (10004221) Solstice Gold Corp	***
677872	BELLMORE LAKE AREA, EDWARDS LAKE AREA	SC	2021-09-24	2023-09-24	Active	1	400	100% (10004221) Solstice Gold Corp	***
677873	BELLMORE LAKE AREA	SC	2021-09-24	2023-09-24	Active	1	400	100% (10004221) Solstice Gold Corp	***
677874	BELLMORE LAKE AREA	SC	2021-09-24	2023-09-24	Active	1	400	100% (10004221) Solstice Gold Corp	***

Tenure NUM	Township	Tenure	Issue Date	Anniversary Date	Status	cell#	Work Required	Recorded Holder	Denote
677875	BELLMORE LAKE AREA	SC	2021-09-24	2023-09-24	Active	1	400	100% (10004221) Solstice Gold Corp	***
677876	BELLMORE LAKE AREA, EDWARDS LAKE AREA	SC	2021-09-24	2023-09-24	Active	1	400	100% (10004221) Solstice Gold Corp	***
677877	BELLMORE LAKE AREA, EDWARDS LAKE AREA	SC	2021-09-24	2023-09-24	Active	1	400	100% (10004221) Solstice Gold Corp	***
677878	BELLMORE LAKE AREA	SC	2021-09-24	2023-09-24	Active	1	400	100% (10004221) Solstice Gold Corp	***
677879	BELLMORE LAKE AREA	SC	2021-09-24	2023-09-24	Active	1	400	100% (10004221) Solstice Gold Corp	***
677880	BELLMORE LAKE AREA	SC	2021-09-24	2023-09-24	Active	1	400	100% (10004221) Solstice Gold Corp	***
677881	BELLMORE LAKE AREA, EDWARDS LAKE AREA	SC	2021-09-24	2023-09-24	Active	1	400	100% (10004221) Solstice Gold Corp	***
677882	BELLMORE LAKE AREA, EDWARDS LAKE AREA	SC	2021-09-24	2023-09-24	Active	1	400	100% (10004221) Solstice Gold Corp	***
677883	EDWARDS LAKE AREA	SC	2021-09-24	2023-09-24	Active	1	400	100% (10004221) Solstice Gold Corp	***
677884	BELLMORE LAKE AREA	SC	2021-09-24	2023-09-24	Active	1	400	100% (10004221) Solstice Gold Corp	***
677885	BELLMORE LAKE AREA	SC	2021-09-24	2023-09-24	Active	1	400	100% (10004221) Solstice Gold Corp	***
677886	BELLMORE LAKE AREA	SC	2021-09-24	2023-09-24	Active	1	400	100% (10004221) Solstice Gold Corp	***
677887	BELLMORE LAKE AREA	SC	2021-09-24	2023-09-24	Active	1	400	100% (10004221) Solstice Gold Corp	***
677888	BELLMORE LAKE AREA, EDWARDS LAKE AREA	SC	2021-09-24	2023-09-24	Active	1	400	100% (10004221) Solstice Gold Corp	***
677889	BELLMORE LAKE AREA, EDWARDS LAKE AREA	SC	2021-09-24	2023-09-24	Active	1	400	100% (10004221) Solstice Gold Corp	***
677890	EDWARDS LAKE AREA	SC	2021-09-24	2023-09-24	Active	1	400	100% (10004221) Solstice Gold Corp	***
677891	EDWARDS LAKE AREA	SC	2021-09-24	2023-09-24	Active	1	400	100% (10004221) Solstice Gold Corp	***
677892	BELLMORE LAKE AREA	SC	2021-09-24	2023-09-24	Active	1	400	100% (10004221) Solstice Gold Corp	***
677893	BELLMORE LAKE AREA	SC	2021-09-24	2023-09-24	Active	1	400	100% (10004221) Solstice Gold Corp	***
677894	BELLMORE LAKE AREA	SC	2021-09-24	2023-09-24	Active	1	400	100% (10004221) Solstice Gold Corp	***
677895	BELLMORE LAKE AREA	SC	2021-09-24	2023-09-24	Active	1	400	100% (10004221) Solstice Gold Corp	***
677896	BELLMORE LAKE AREA, EDWARDS LAKE AREA	SC	2021-09-24	2023-09-24	Active	1	400	100% (10004221) Solstice Gold Corp	***
677897	BELLMORE LAKE AREA, EDWARDS LAKE AREA	SC	2021-09-24	2023-09-24	Active	1	400	100% (10004221) Solstice Gold Corp	***
677898	EDWARDS LAKE AREA	SC	2021-09-24	2023-09-24	Active	1	400	100% (10004221) Solstice Gold Corp	***
677899	EDWARDS LAKE AREA	SC	2021-09-24	2023-09-24	Active	1	400	100% (10004221) Solstice Gold Corp	***
677900	EDWARDS LAKE AREA	SC	2021-09-24	2023-09-24	Active	1	400	100% (10004221) Solstice Gold Corp	***
677901	EDWARDS LAKE AREA	SC	2021-09-24	2023-09-24	Active	1	400	100% (10004221) Solstice Gold Corp	***
677902	EDWARDS LAKE AREA	SC	2021-09-24	2023-09-24	Active	1	400	100% (10004221) Solstice Gold Corp	***
677903	BELLMORE LAKE AREA	SC	2021-09-24	2023-09-24	Active	1	400	100% (10004221) Solstice Gold Corp	***



Tenure NUM	Township	Tenure	Issue Date	Anniversary Date	Status	cell#	Work Required	Recorded Holder	Denote
677904	BELLMORE LAKE AREA	SC	2021-09-24	2023-09-24	Active	1	400	100% (10004221) Solstice Gold Corp	***
677905	BELLMORE LAKE AREA	SC	2021-09-24	2023-09-24	Active	1	400	100% (10004221) Solstice Gold Corp	***
677906	BELLMORE LAKE AREA	SC	2021-09-24	2023-09-24	Active	1	400	100% (10004221) Solstice Gold Corp	***
677907	BELLMORE LAKE AREA, EDWARDS LAKE AREA	SC	2021-09-24	2023-09-24	Active	1	400	100% (10004221) Solstice Gold Corp	***
677908	BELLMORE LAKE AREA, EDWARDS LAKE AREA	SC	2021-09-24	2023-09-24	Active	1	400	100% (10004221) Solstice Gold Corp	***
677909	EDWARDS LAKE AREA	SC	2021-09-24	2023-09-24	Active	1	400	100% (10004221) Solstice Gold Corp	***
677910	EDWARDS LAKE AREA	SC	2021-09-24	2023-09-24	Active	1	400	100% (10004221) Solstice Gold Corp	***
677911	EDWARDS LAKE AREA	SC	2021-09-24	2023-09-24	Active	1	400	100% (10004221) Solstice Gold Corp	***
677912	EDWARDS LAKE AREA	SC	2021-09-24	2023-09-24	Active	1	400	100% (10004221) Solstice Gold Corp	***
677913	EDWARDS LAKE AREA	SC	2021-09-24	2023-09-24	Active	1	400	100% (10004221) Solstice Gold Corp	***
677914	BELLMORE LAKE AREA	SC	2021-09-24	2023-09-24	Active	1	400	100% (10004221) Solstice Gold Corp	***
677915	BELLMORE LAKE AREA	SC	2021-09-24	2023-09-24	Active	1	400	100% (10004221) Solstice Gold Corp	***
677916	BELLMORE LAKE AREA	SC	2021-09-24	2023-09-24	Active	1	400	100% (10004221) Solstice Gold Corp	***
677917	BELLMORE LAKE AREA	SC	2021-09-24	2023-09-24	Active	1	400	100% (10004221) Solstice Gold Corp	***
677918	BELLMORE LAKE AREA, EDWARDS LAKE AREA	SC	2021-09-24	2023-09-24	Active	1	400	100% (10004221) Solstice Gold Corp	***
677919	BELLMORE LAKE AREA, EDWARDS LAKE AREA	SC	2021-09-24	2023-09-24	Active	1	400	100% (10004221) Solstice Gold Corp	***
677920	EDWARDS LAKE AREA	SC	2021-09-24	2023-09-24	Active	1	400	100% (10004221) Solstice Gold Corp	***
677921	EDWARDS LAKE AREA	SC	2021-09-24	2023-09-24	Active	1	400	100% (10004221) Solstice Gold Corp	***
677922	EDWARDS LAKE AREA	SC	2021-09-24	2023-09-24	Active	1	400	100% (10004221) Solstice Gold Corp	***
677923	EDWARDS LAKE AREA	SC	2021-09-24	2023-09-24	Active	1	400	100% (10004221) Solstice Gold Corp	***
677924	EDWARDS LAKE AREA	SC	2021-09-24	2023-09-24	Active	1	400	100% (10004221) Solstice Gold Corp	***
677925	BELLMORE LAKE AREA, RICHARDSON LAKE AREA	SC	2021-09-24	2023-09-24	Active	1	400	100% (10004221) Solstice Gold Corp	***
677926	BELLMORE LAKE AREA, RICHARDSON LAKE AREA	SC	2021-09-24	2023-09-24	Active	1	400	100% (10004221) Solstice Gold Corp	***
677927	BELLMORE LAKE AREA, RICHARDSON LAKE AREA	SC	2021-09-24	2023-09-24	Active	1	400	100% (10004221) Solstice Gold Corp	***
677928	BELLMORE LAKE AREA, RICHARDSON LAKE AREA	SC	2021-09-24	2023-09-24	Active	1	400	100% (10004221) Solstice Gold Corp	***
677929	BELLMORE LAKE AREA, EDWARDS LAKE AREA, RICHARDSON LAKE AREA	SC	2021-09-24	2023-09-24	Active	1	400	100% (10004221) Solstice Gold Corp	***
677930	BELLMORE LAKE AREA, EDWARDS LAKE AREA, RICHARDSON LAKE AREA	SC	2021-09-24	2023-09-24	Active	1	400	100% (10004221) Solstice Gold Corp	***
677931	EDWARDS LAKE AREA	SC	2021-09-24	2023-09-24	Active	1	400	100% (10004221) Solstice Gold Corp	***

Tenure NUM	Township	Tenure	Issue Date	Anniversary Date	Status	cell#	Work Required	Recorded Holder	Denote
677932	EDWARDS LAKE AREA	SC	2021-09-24	2023-09-24	Active	1	400	100% (10004221) Solstice Gold Corp	***
677933	EDWARDS LAKE AREA	SC	2021-09-24	2023-09-24	Active	1	400	100% (10004221) Solstice Gold Corp	***
677934	EDWARDS LAKE AREA	SC	2021-09-24	2023-09-24	Active	1	400	100% (10004221) Solstice Gold Corp	***
677935	EDWARDS LAKE AREA	SC	2021-09-24	2023-09-24	Active	1	400	100% (10004221) Solstice Gold Corp	***
677936	BELLMORE LAKE AREA,RICHARDSON LAKE AREA	SC	2021-09-24	2023-09-24	Active	1	400	100% (10004221) Solstice Gold Corp	***
677937	BELLMORE LAKE AREA,RICHARDSON LAKE AREA	SC	2021-09-24	2023-09-24	Active	1	400	100% (10004221) Solstice Gold Corp	***
677938	BELLMORE LAKE AREA,RICHARDSON LAKE AREA	SC	2021-09-24	2023-09-24	Active	1	400	100% (10004221) Solstice Gold Corp	***
677939	BELLMORE LAKE AREA,RICHARDSON LAKE AREA	SC	2021-09-24	2023-09-24	Active	1	400	100% (10004221) Solstice Gold Corp	***
677940	BELLMORE LAKE AREA,EDWARDS LAKE AREA,RICHARDSON LAKE AREA	SC	2021-09-24	2023-09-24	Active	1	400	100% (10004221) Solstice Gold Corp	***
677941	BELLMORE LAKE AREA,EDWARDS LAKE AREA,RICHARDSON LAKE AREA	SC	2021-09-24	2023-09-24	Active	1	400	100% (10004221) Solstice Gold Corp	***
677942	EDWARDS LAKE AREA	SC	2021-09-24	2023-09-24	Active	1	400	100% (10004221) Solstice Gold Corp	***
677943	EDWARDS LAKE AREA	SC	2021-09-24	2023-09-24	Active	1	400	100% (10004221) Solstice Gold Corp	***
677944	EDWARDS LAKE AREA	SC	2021-09-24	2023-09-24	Active	1	400	100% (10004221) Solstice Gold Corp	***
677945	EDWARDS LAKE AREA	SC	2021-09-24	2023-09-24	Active	1	400	100% (10004221) Solstice Gold Corp	***
677946	EDWARDS LAKE AREA	SC	2021-09-24	2023-09-24	Active	1	400	100% (10004221) Solstice Gold Corp	***
677947	RICHARDSON LAKE AREA	SC	2021-09-24	2023-09-24	Active	1	400	100% (10004221) Solstice Gold Corp	***
677948	RICHARDSON LAKE AREA	SC	2021-09-24	2023-09-24	Active	1	400	100% (10004221) Solstice Gold Corp	***
677949	RICHARDSON LAKE AREA	SC	2021-09-24	2023-09-24	Active	1	400	100% (10004221) Solstice Gold Corp	***
677950	RICHARDSON LAKE AREA	SC	2021-09-24	2023-09-24	Active	1	400	100% (10004221) Solstice Gold Corp	***
677951	EDWARDS LAKE AREA,RICHARDSON LAKE AREA	SC	2021-09-24	2023-09-24	Active	1	400	100% (10004221) Solstice Gold Corp	***
677952	EDWARDS LAKE AREA,RICHARDSON LAKE AREA	SC	2021-09-24	2023-09-24	Active	1	400	100% (10004221) Solstice Gold Corp	***
677953	EDWARDS LAKE AREA	SC	2021-09-24	2023-09-24	Active	1	400	100% (10004221) Solstice Gold Corp	***
677954	EDWARDS LAKE AREA	SC	2021-09-24	2023-09-24	Active	1	400	100% (10004221) Solstice Gold Corp	***
677955	EDWARDS LAKE AREA	SC	2021-09-24	2023-09-24	Active	1	400	100% (10004221) Solstice Gold Corp	***
677956	EDWARDS LAKE AREA	SC	2021-09-24	2023-09-24	Active	1	400	100% (10004221) Solstice Gold Corp	***
677957	EDWARDS LAKE AREA	SC	2021-09-24	2023-09-24	Active	1	400	100% (10004221) Solstice Gold Corp	***
677958	RICHARDSON LAKE AREA	SC	2021-09-24	2023-09-24	Active	1	400	100% (10004221) Solstice Gold Corp	***
677959	RICHARDSON LAKE AREA	SC	2021-09-24	2023-09-24	Active	1	400	100% (10004221) Solstice Gold Corp	***

Tenure NUM	Township	Tenure	Issue Date	Anniversary Date	Status	cell#	Work Required	Recorded Holder	Denote
677960	RICHARDSON LAKE AREA	SC	2021-09-24	2023-09-24	Active	1	400	100% (10004221) Solstice Gold Corp	***
677961	RICHARDSON LAKE AREA	SC	2021-09-24	2023-09-24	Active	1	400	100% (10004221) Solstice Gold Corp	***
677962	EDWARDS LAKE AREA,RICHARDSON LAKE AREA	SC	2021-09-24	2023-09-24	Active	1	400	100% (10004221) Solstice Gold Corp	***
677963	EDWARDS LAKE AREA,RICHARDSON LAKE AREA	SC	2021-09-24	2023-09-24	Active	1	400	100% (10004221) Solstice Gold Corp	***
677964	EDWARDS LAKE AREA	SC	2021-09-24	2023-09-24	Active	1	400	100% (10004221) Solstice Gold Corp	***
677965	EDWARDS LAKE AREA	SC	2021-09-24	2023-09-24	Active	1	400	100% (10004221) Solstice Gold Corp	***
677966	EDWARDS LAKE AREA	SC	2021-09-24	2023-09-24	Active	1	400	100% (10004221) Solstice Gold Corp	***
677967	EDWARDS LAKE AREA	SC	2021-09-24	2023-09-24	Active	1	400	100% (10004221) Solstice Gold Corp	***
677968	EDWARDS LAKE AREA	SC	2021-09-24	2023-09-24	Active	1	400	100% (10004221) Solstice Gold Corp	***
677969	WEAVER	SC	2021-09-24	2023-09-24	Active	1	400	100% (10004221) Solstice Gold Corp	***
677970	WEAVER	SC	2021-09-24	2023-09-24	Active	1	400	100% (10004221) Solstice Gold Corp	***
677971	WEAVER	SC	2021-09-24	2023-09-24	Active	1	400	100% (10004221) Solstice Gold Corp	***
677972	WEAVER	SC	2021-09-24	2023-09-24	Active	1	400	100% (10004221) Solstice Gold Corp	***
677973	WEAVER	SC	2021-09-24	2023-09-24	Active	1	400	100% (10004221) Solstice Gold Corp	***
677974	WEAVER	SC	2021-09-24	2023-09-24	Active	1	400	100% (10004221) Solstice Gold Corp	***
677975	WEAVER	SC	2021-09-24	2023-09-24	Active	1	400	100% (10004221) Solstice Gold Corp	***
677976	BELLMORE LAKE AREA,WEAVER	SC	2021-09-24	2023-09-24	Active	1	400	100% (10004221) Solstice Gold Corp	***
677977	BELLMORE LAKE AREA,WEAVER	SC	2021-09-24	2023-09-24	Active	1	400	100% (10004221) Solstice Gold Corp	***
677978	BEDIVERE LAKE AREA,BELLMORE LAKE AREA,WEAVER	SC	2021-09-24	2023-09-24	Active	1	400	100% (10004221) Solstice Gold Corp	***
677979	BEDIVERE LAKE AREA,BELLMORE LAKE AREA,WEAVER	SC	2021-09-24	2023-09-24	Active	1	400	100% (10004221) Solstice Gold Corp	***
677980	BEDIVERE LAKE AREA,WEAVER	SC	2021-09-24	2023-09-24	Active	1	400	100% (10004221) Solstice Gold Corp	***
677981	BEDIVERE LAKE AREA,WEAVER	SC	2021-09-24	2023-09-24	Active	1	400	100% (10004221) Solstice Gold Corp	***
677982	BEDIVERE LAKE AREA,WEAVER	SC	2021-09-24	2023-09-24	Active	1	400	100% (10004221) Solstice Gold Corp	***
677983	BEDIVERE LAKE AREA,WEAVER	SC	2021-09-24	2023-09-24	Active	1	400	100% (10004221) Solstice Gold Corp	***
677984	BEDIVERE LAKE AREA,WEAVER	SC	2021-09-24	2023-09-24	Active	1	400	100% (10004221) Solstice Gold Corp	***
677985	BEDIVERE LAKE AREA	SC	2021-09-24	2023-09-24	Active	1	400	100% (10004221) Solstice Gold Corp	***
677986	BEDIVERE LAKE AREA	SC	2021-09-24	2023-09-24	Active	1	400	100% (10004221) Solstice Gold Corp	***
677987	BEDIVERE LAKE AREA	SC	2021-09-24	2023-09-24	Active	1	400	100% (10004221) Solstice Gold Corp	***



Tenure NUM	Township	Tenure	Issue Date	Anniversary Date	Status	cell#	Work Required	Recorded Holder	Denote
677988	BEDIVERE LAKE AREA	SC	2021-09-24	2023-09-24	Active	1	400	100% (10004221) Solstice Gold Corp	***
677989	BEDIVERE LAKE AREA	SC	2021-09-24	2023-09-24	Active	1	400	100% (10004221) Solstice Gold Corp	***
677990	BELLMORE LAKE AREA	SC	2021-09-24	2023-09-24	Active	1	400	100% (10004221) Solstice Gold Corp	***
677991	BELLMORE LAKE AREA	SC	2021-09-24	2023-09-24	Active	1	400	100% (10004221) Solstice Gold Corp	***
677992	BELLMORE LAKE AREA	SC	2021-09-24	2023-09-24	Active	1	400	100% (10004221) Solstice Gold Corp	***
677993	BELLMORE LAKE AREA	SC	2021-09-24	2023-09-24	Active	1	400	100% (10004221) Solstice Gold Corp	***
677994	BELLMORE LAKE AREA	SC	2021-09-24	2023-09-24	Active	1	400	100% (10004221) Solstice Gold Corp	***
677995	BELLMORE LAKE AREA	SC	2021-09-24	2023-09-24	Active	1	400	100% (10004221) Solstice Gold Corp	***
677996	BELLMORE LAKE AREA	SC	2021-09-24	2023-09-24	Active	1	400	100% (10004221) Solstice Gold Corp	***
677997	BELLMORE LAKE AREA	SC	2021-09-24	2023-09-24	Active	1	400	100% (10004221) Solstice Gold Corp	***
677998	BEDIVERE LAKE AREA, BELLMORE LAKE AREA	SC	2021-09-24	2023-09-24	Active	1	400	100% (10004221) Solstice Gold Corp	***
677999	BEDIVERE LAKE AREA, BELLMORE LAKE AREA	SC	2021-09-24	2023-09-24	Active	1	400	100% (10004221) Solstice Gold Corp	***
678000	BEDIVERE LAKE AREA	SC	2021-09-24	2023-09-24	Active	1	400	100% (10004221) Solstice Gold Corp	***
678001	BEDIVERE LAKE AREA	SC	2021-09-24	2023-09-24	Active	1	400	100% (10004221) Solstice Gold Corp	***
678002	BEDIVERE LAKE AREA	SC	2021-09-24	2023-09-24	Active	1	400	100% (10004221) Solstice Gold Corp	***
678003	BEDIVERE LAKE AREA	SC	2021-09-24	2023-09-24	Active	1	400	100% (10004221) Solstice Gold Corp	***
678004	BEDIVERE LAKE AREA	SC	2021-09-24	2023-09-24	Active	1	400	100% (10004221) Solstice Gold Corp	***
678005	BEDIVERE LAKE AREA	SC	2021-09-24	2023-09-24	Active	1	400	100% (10004221) Solstice Gold Corp	***
678006	BEDIVERE LAKE AREA	SC	2021-09-24	2023-09-24	Active	1	400	100% (10004221) Solstice Gold Corp	***
678007	BEDIVERE LAKE AREA	SC	2021-09-24	2023-09-24	Active	1	400	100% (10004221) Solstice Gold Corp	***
678008	BEDIVERE LAKE AREA	SC	2021-09-24	2023-09-24	Active	1	400	100% (10004221) Solstice Gold Corp	***
678009	BEDIVERE LAKE AREA	SC	2021-09-24	2023-09-24	Active	1	400	100% (10004221) Solstice Gold Corp	***
678010	BELLMORE LAKE AREA	SC	2021-09-24	2023-09-24	Active	1	400	100% (10004221) Solstice Gold Corp	***
678011	BELLMORE LAKE AREA	SC	2021-09-24	2023-09-24	Active	1	400	100% (10004221) Solstice Gold Corp	***
678012	BELLMORE LAKE AREA	SC	2021-09-24	2023-09-24	Active	1	400	100% (10004221) Solstice Gold Corp	***
678013	BELLMORE LAKE AREA	SC	2021-09-24	2023-09-24	Active	1	400	100% (10004221) Solstice Gold Corp	***
678014	BELLMORE LAKE AREA	SC	2021-09-24	2023-09-24	Active	1	400	100% (10004221) Solstice Gold Corp	***
678015	BELLMORE LAKE AREA	SC	2021-09-24	2023-09-24	Active	1	400	100% (10004221) Solstice Gold Corp	***
678016	BELLMORE LAKE AREA	SC	2021-09-24	2023-09-24	Active	1	400	100% (10004221) Solstice Gold Corp	***

Tenure NUM	Township	Tenure	Issue Date	Anniversary Date	Status	cell#	Work Required	Recorded Holder	Denote
678017	BEDIVERE LAKE AREA,BELLMORE LAKE AREA	SC	2021-09-24	2023-09-24	Active	1	400	100% (10004221) Solstice Gold Corp	***
678018	BEDIVERE LAKE AREA,BELLMORE LAKE AREA	SC	2021-09-24	2023-09-24	Active	1	400	100% (10004221) Solstice Gold Corp	***
678019	BEDIVERE LAKE AREA	SC	2021-09-24	2023-09-24	Active	1	400	100% (10004221) Solstice Gold Corp	***
678020	BEDIVERE LAKE AREA	SC	2021-09-24	2023-09-24	Active	1	400	100% (10004221) Solstice Gold Corp	***
678021	BEDIVERE LAKE AREA	SC	2021-09-24	2023-09-24	Active	1	400	100% (10004221) Solstice Gold Corp	***
678022	BEDIVERE LAKE AREA	SC	2021-09-24	2023-09-24	Active	1	400	100% (10004221) Solstice Gold Corp	***
678023	BEDIVERE LAKE AREA	SC	2021-09-24	2023-09-24	Active	1	400	100% (10004221) Solstice Gold Corp	***
678024	BEDIVERE LAKE AREA	SC	2021-09-24	2023-09-24	Active	1	400	100% (10004221) Solstice Gold Corp	***
678025	BEDIVERE LAKE AREA	SC	2021-09-24	2023-09-24	Active	1	400	100% (10004221) Solstice Gold Corp	***
678026	BEDIVERE LAKE AREA	SC	2021-09-24	2023-09-24	Active	1	400	100% (10004221) Solstice Gold Corp	***
678027	BEDIVERE LAKE AREA	SC	2021-09-24	2023-09-24	Active	1	400	100% (10004221) Solstice Gold Corp	***
678028	BEDIVERE LAKE AREA	SC	2021-09-24	2023-09-24	Active	1	400	100% (10004221) Solstice Gold Corp	***
678029	BELLMORE LAKE AREA	SC	2021-09-24	2023-09-24	Active	1	400	100% (10004221) Solstice Gold Corp	***
678030	BELLMORE LAKE AREA	SC	2021-09-24	2023-09-24	Active	1	400	100% (10004221) Solstice Gold Corp	***
678031	BELLMORE LAKE AREA	SC	2021-09-24	2023-09-24	Active	1	400	100% (10004221) Solstice Gold Corp	***
678032	BELLMORE LAKE AREA	SC	2021-09-24	2023-09-24	Active	1	400	100% (10004221) Solstice Gold Corp	***
678033	BELLMORE LAKE AREA	SC	2021-09-24	2023-09-24	Active	1	400	100% (10004221) Solstice Gold Corp	***
678034	BELLMORE LAKE AREA	SC	2021-09-24	2023-09-24	Active	1	400	100% (10004221) Solstice Gold Corp	***
678035	BELLMORE LAKE AREA	SC	2021-09-24	2023-09-24	Active	1	400	100% (10004221) Solstice Gold Corp	***
678036	BEDIVERE LAKE AREA,BELLMORE LAKE AREA	SC	2021-09-24	2023-09-24	Active	1	400	100% (10004221) Solstice Gold Corp	***
678037	BEDIVERE LAKE AREA,BELLMORE LAKE AREA	SC	2021-09-24	2023-09-24	Active	1	400	100% (10004221) Solstice Gold Corp	***
678038	BEDIVERE LAKE AREA	SC	2021-09-24	2023-09-24	Active	1	400	100% (10004221) Solstice Gold Corp	***
678039	BEDIVERE LAKE AREA	SC	2021-09-24	2023-09-24	Active	1	400	100% (10004221) Solstice Gold Corp	***
678040	BEDIVERE LAKE AREA	SC	2021-09-24	2023-09-24	Active	1	400	100% (10004221) Solstice Gold Corp	***
678041	BEDIVERE LAKE AREA	SC	2021-09-24	2023-09-24	Active	1	400	100% (10004221) Solstice Gold Corp	***
678042	BEDIVERE LAKE AREA	SC	2021-09-24	2023-09-24	Active	1	400	100% (10004221) Solstice Gold Corp	***
678043	BEDIVERE LAKE AREA	SC	2021-09-24	2023-09-24	Active	1	400	100% (10004221) Solstice Gold Corp	***
678044	BEDIVERE LAKE AREA	SC	2021-09-24	2023-09-24	Active	1	400	100% (10004221) Solstice Gold Corp	***
678045	BEDIVERE LAKE AREA	SC	2021-09-24	2023-09-24	Active	1	400	100% (10004221) Solstice Gold Corp	***

Tenure NUM	Township	Tenure	Issue Date	Anniversary Date	Status	cell#	Work Required	Recorded Holder	Denote
678046	BEDIVERE LAKE AREA	SC	2021-09-24	2023-09-24	Active	1	400	100% (10004221) Solstice Gold Corp	***
678047	BEDIVERE LAKE AREA	SC	2021-09-24	2023-09-24	Active	1	400	100% (10004221) Solstice Gold Corp	***
678048	BELLMORE LAKE AREA	SC	2021-09-24	2023-09-24	Active	1	400	100% (10004221) Solstice Gold Corp	***
678049	BELLMORE LAKE AREA	SC	2021-09-24	2023-09-24	Active	1	400	100% (10004221) Solstice Gold Corp	***
678050	BELLMORE LAKE AREA	SC	2021-09-24	2023-09-24	Active	1	400	100% (10004221) Solstice Gold Corp	***
678051	BELLMORE LAKE AREA	SC	2021-09-24	2023-09-24	Active	1	400	100% (10004221) Solstice Gold Corp	***
678052	BELLMORE LAKE AREA	SC	2021-09-24	2023-09-24	Active	1	400	100% (10004221) Solstice Gold Corp	***
678053	BELLMORE LAKE AREA	SC	2021-09-24	2023-09-24	Active	1	400	100% (10004221) Solstice Gold Corp	***
678054	BELLMORE LAKE AREA	SC	2021-09-24	2023-09-24	Active	1	400	100% (10004221) Solstice Gold Corp	***
678055	BEDIVERE LAKE AREA, BELLMORE LAKE AREA	SC	2021-09-24	2023-09-24	Active	1	400	100% (10004221) Solstice Gold Corp	***
678056	BEDIVERE LAKE AREA, BELLMORE LAKE AREA	SC	2021-09-24	2023-09-24	Active	1	400	100% (10004221) Solstice Gold Corp	***
678057	BEDIVERE LAKE AREA	SC	2021-09-24	2023-09-24	Active	1	400	100% (10004221) Solstice Gold Corp	***
678058	BEDIVERE LAKE AREA	SC	2021-09-24	2023-09-24	Active	1	400	100% (10004221) Solstice Gold Corp	***
678059	BEDIVERE LAKE AREA	SC	2021-09-24	2023-09-24	Active	1	400	100% (10004221) Solstice Gold Corp	***
678060	BEDIVERE LAKE AREA	SC	2021-09-24	2023-09-24	Active	1	400	100% (10004221) Solstice Gold Corp	***
678061	BEDIVERE LAKE AREA	SC	2021-09-24	2023-09-24	Active	1	400	100% (10004221) Solstice Gold Corp	***
678062	BEDIVERE LAKE AREA	SC	2021-09-24	2023-09-24	Active	1	400	100% (10004221) Solstice Gold Corp	***
678063	BEDIVERE LAKE AREA	SC	2021-09-24	2023-09-24	Active	1	400	100% (10004221) Solstice Gold Corp	***
678064	BEDIVERE LAKE AREA	SC	2021-09-24	2023-09-24	Active	1	400	100% (10004221) Solstice Gold Corp	***
678065	BEDIVERE LAKE AREA	SC	2021-09-24	2023-09-24	Active	1	400	100% (10004221) Solstice Gold Corp	***
678066	BEDIVERE LAKE AREA	SC	2021-09-24	2023-09-24	Active	1	400	100% (10004221) Solstice Gold Corp	***
678067	BEDIVERE LAKE AREA	SC	2021-09-24	2023-09-24	Active	1	400	100% (10004221) Solstice Gold Corp	***
678068	BEDIVERE LAKE AREA	SC	2021-09-24	2023-09-24	Active	1	400	100% (10004221) Solstice Gold Corp	***
678069	BELLMORE LAKE AREA	SC	2021-09-24	2023-09-24	Active	1	400	100% (10004221) Solstice Gold Corp	***
678070	BELLMORE LAKE AREA	SC	2021-09-24	2023-09-24	Active	1	400	100% (10004221) Solstice Gold Corp	***
678071	BELLMORE LAKE AREA	SC	2021-09-24	2023-09-24	Active	1	400	100% (10004221) Solstice Gold Corp	***
678072	BELLMORE LAKE AREA	SC	2021-09-24	2023-09-24	Active	1	400	100% (10004221) Solstice Gold Corp	***
678073	BELLMORE LAKE AREA	SC	2021-09-24	2023-09-24	Active	1	400	100% (10004221) Solstice Gold Corp	***
678074	BELLMORE LAKE AREA	SC	2021-09-24	2023-09-24	Active	1	400	100% (10004221) Solstice Gold Corp	***



Tenure NUM	Township	Tenure	Issue Date	Anniversary Date	Status	cell#	Work Required	Recorded Holder	Denote
678075	BEDIVERE LAKE AREA,BELLMORE LAKE AREA	SC	2021-09-24	2023-09-24	Active	1	400	100% (10004221) Solstice Gold Corp	***
678076	BEDIVERE LAKE AREA,BELLMORE LAKE AREA	SC	2021-09-24	2023-09-24	Active	1	400	100% (10004221) Solstice Gold Corp	***
678077	BEDIVERE LAKE AREA	SC	2021-09-24	2023-09-24	Active	1	400	100% (10004221) Solstice Gold Corp	***
678078	BEDIVERE LAKE AREA	SC	2021-09-24	2023-09-24	Active	1	400	100% (10004221) Solstice Gold Corp	***
678079	BEDIVERE LAKE AREA	SC	2021-09-24	2023-09-24	Active	1	400	100% (10004221) Solstice Gold Corp	***
678080	BEDIVERE LAKE AREA	SC	2021-09-24	2023-09-24	Active	1	400	100% (10004221) Solstice Gold Corp	***
678081	BEDIVERE LAKE AREA	SC	2021-09-24	2023-09-24	Active	1	400	100% (10004221) Solstice Gold Corp	***
678082	BEDIVERE LAKE AREA	SC	2021-09-24	2023-09-24	Active	1	400	100% (10004221) Solstice Gold Corp	***
678083	BEDIVERE LAKE AREA	SC	2021-09-24	2023-09-24	Active	1	400	100% (10004221) Solstice Gold Corp	***
678084	BEDIVERE LAKE AREA	SC	2021-09-24	2023-09-24	Active	1	400	100% (10004221) Solstice Gold Corp	***
678085	BEDIVERE LAKE AREA	SC	2021-09-24	2023-09-24	Active	1	400	100% (10004221) Solstice Gold Corp	***
678086	BEDIVERE LAKE AREA	SC	2021-09-24	2023-09-24	Active	1	400	100% (10004221) Solstice Gold Corp	***
678087	BEDIVERE LAKE AREA	SC	2021-09-24	2023-09-24	Active	1	400	100% (10004221) Solstice Gold Corp	***
678088	BEDIVERE LAKE AREA	SC	2021-09-24	2023-09-24	Active	1	400	100% (10004221) Solstice Gold Corp	***
678089	BELLMORE LAKE AREA	SC	2021-09-24	2023-09-24	Active	1	400	100% (10004221) Solstice Gold Corp	***
678090	BELLMORE LAKE AREA	SC	2021-09-24	2023-09-24	Active	1	400	100% (10004221) Solstice Gold Corp	***
678091	BELLMORE LAKE AREA	SC	2021-09-24	2023-09-24	Active	1	400	100% (10004221) Solstice Gold Corp	***
678092	BELLMORE LAKE AREA	SC	2021-09-24	2023-09-24	Active	1	400	100% (10004221) Solstice Gold Corp	***
678093	BELLMORE LAKE AREA	SC	2021-09-24	2023-09-24	Active	1	400	100% (10004221) Solstice Gold Corp	***
678094	BELLMORE LAKE AREA	SC	2021-09-24	2023-09-24	Active	1	400	100% (10004221) Solstice Gold Corp	***
678095	BEDIVERE LAKE AREA,BELLMORE LAKE AREA,EDWARDS LAKE AREA	SC	2021-09-24	2023-09-24	Active	1	400	100% (10004221) Solstice Gold Corp	***
678096	BEDIVERE LAKE AREA,BELLMORE LAKE AREA,EDWARDS LAKE AREA	SC	2021-09-24	2023-09-24	Active	1	400	100% (10004221) Solstice Gold Corp	***
678097	BEDIVERE LAKE AREA,EDWARDS LAKE AREA	SC	2021-09-24	2023-09-24	Active	1	400	100% (10004221) Solstice Gold Corp	***
678098	BEDIVERE LAKE AREA,EDWARDS LAKE AREA	SC	2021-09-24	2023-09-24	Active	1	400	100% (10004221) Solstice Gold Corp	***
678099	BEDIVERE LAKE AREA,EDWARDS LAKE AREA	SC	2021-09-24	2023-09-24	Active	1	400	100% (10004221) Solstice Gold Corp	***
678100	BEDIVERE LAKE AREA,EDWARDS LAKE AREA	SC	2021-09-24	2023-09-24	Active	1	400	100% (10004221) Solstice Gold Corp	***
678101	BEDIVERE LAKE AREA,EDWARDS LAKE AREA	SC	2021-09-24	2023-09-24	Active	1	400	100% (10004221) Solstice Gold Corp	***
678102	BEDIVERE LAKE AREA,EDWARDS LAKE AREA	SC	2021-09-24	2023-09-24	Active	1	400	100% (10004221) Solstice Gold Corp	***

Tenure NUM	Township	Tenure	Issue Date	Anniversary Date	Status	cell#	Work Required	Recorded Holder	Denote
678103	BEDIVERE LAKE AREA, EDWARDS LAKE AREA	SC	2021-09-24	2023-09-24	Active	1	400	100% (10004221) Solstice Gold Corp	***
678104	BEDIVERE LAKE AREA, EDWARDS LAKE AREA	SC	2021-09-24	2023-09-24	Active	1	400	100% (10004221) Solstice Gold Corp	***
678105	BEDIVERE LAKE AREA, EDWARDS LAKE AREA	SC	2021-09-24	2023-09-24	Active	1	400	100% (10004221) Solstice Gold Corp	***
678106	BEDIVERE LAKE AREA, EDWARDS LAKE AREA	SC	2021-09-24	2023-09-24	Active	1	400	100% (10004221) Solstice Gold Corp	***
678107	BEDIVERE LAKE AREA, EDWARDS LAKE AREA	SC	2021-09-24	2023-09-24	Active	1	400	100% (10004221) Solstice Gold Corp	***
678108	BEDIVERE LAKE AREA, EDWARDS LAKE AREA	SC	2021-09-24	2023-09-24	Active	1	400	100% (10004221) Solstice Gold Corp	***
678109	BELLMORE LAKE AREA	SC	2021-09-24	2023-09-24	Active	1	400	100% (10004221) Solstice Gold Corp	***
678110	BELLMORE LAKE AREA	SC	2021-09-24	2023-09-24	Active	1	400	100% (10004221) Solstice Gold Corp	***
678111	BELLMORE LAKE AREA	SC	2021-09-24	2023-09-24	Active	1	400	100% (10004221) Solstice Gold Corp	***
678112	BELLMORE LAKE AREA	SC	2021-09-24	2023-09-24	Active	1	400	100% (10004221) Solstice Gold Corp	***
678113	BELLMORE LAKE AREA	SC	2021-09-24	2023-09-24	Active	1	400	100% (10004221) Solstice Gold Corp	***
678114	BEDIVERE LAKE AREA, BELLMORE LAKE AREA, EDWARDS LAKE AREA	SC	2021-09-24	2023-09-24	Active	1	400	100% (10004221) Solstice Gold Corp	***
678115	BEDIVERE LAKE AREA, BELLMORE LAKE AREA, EDWARDS LAKE AREA	SC	2021-09-24	2023-09-24	Active	1	400	100% (10004221) Solstice Gold Corp	***
678116	BEDIVERE LAKE AREA, EDWARDS LAKE AREA	SC	2021-09-24	2023-09-24	Active	1	400	100% (10004221) Solstice Gold Corp	***
678117	BEDIVERE LAKE AREA, EDWARDS LAKE AREA	SC	2021-09-24	2023-09-24	Active	1	400	100% (10004221) Solstice Gold Corp	***
678118	BEDIVERE LAKE AREA, EDWARDS LAKE AREA	SC	2021-09-24	2023-09-24	Active	1	400	100% (10004221) Solstice Gold Corp	***
678119	BEDIVERE LAKE AREA, EDWARDS LAKE AREA	SC	2021-09-24	2023-09-24	Active	1	400	100% (10004221) Solstice Gold Corp	***
678120	BEDIVERE LAKE AREA, EDWARDS LAKE AREA	SC	2021-09-24	2023-09-24	Active	1	400	100% (10004221) Solstice Gold Corp	***
678121	EDWARDS LAKE AREA	SC	2021-09-24	2023-09-24	Active	1	400	100% (10004221) Solstice Gold Corp	***
678122	BEDIVERE LAKE AREA, EDWARDS LAKE AREA	SC	2021-09-24	2023-09-24	Active	1	400	100% (10004221) Solstice Gold Corp	***
678123	BEDIVERE LAKE AREA, EDWARDS LAKE AREA	SC	2021-09-24	2023-09-24	Active	1	400	100% (10004221) Solstice Gold Corp	***
678124	BEDIVERE LAKE AREA, EDWARDS LAKE AREA	SC	2021-09-24	2023-09-24	Active	1	400	100% (10004221) Solstice Gold Corp	***
678125	BEDIVERE LAKE AREA, EDWARDS LAKE AREA	SC	2021-09-24	2023-09-24	Active	1	400	100% (10004221) Solstice Gold Corp	***
678126	BEDIVERE LAKE AREA, EDWARDS LAKE AREA	SC	2021-09-24	2023-09-24	Active	1	400	100% (10004221) Solstice Gold Corp	***
678127	BEDIVERE LAKE AREA, EDWARDS LAKE AREA	SC	2021-09-24	2023-09-24	Active	1	400	100% (10004221) Solstice Gold Corp	***
678128	BELLMORE LAKE AREA	SC	2021-09-24	2023-09-24	Active	1	400	100% (10004221) Solstice Gold Corp	***
678129	BELLMORE LAKE AREA	SC	2021-09-24	2023-09-24	Active	1	400	100% (10004221) Solstice Gold Corp	***
678130	BELLMORE LAKE AREA	SC	2021-09-24	2023-09-24	Active	1	400	100% (10004221) Solstice Gold Corp	***

Tenure NUM	Township	Tenure	Issue Date	Anniversary Date	Status	cell#	Work Required	Recorded Holder	Denote
678131	BELLMORE LAKE AREA	SC	2021-09-24	2023-09-24	Active	1	400	100% (10004221) Solstice Gold Corp	***
678132	BELLMORE LAKE AREA	SC	2021-09-24	2023-09-24	Active	1	400	100% (10004221) Solstice Gold Corp	***
678133	BELLMORE LAKE AREA, EDWARDS LAKE AREA	SC	2021-09-24	2023-09-24	Active	1	400	100% (10004221) Solstice Gold Corp	***
678134	BELLMORE LAKE AREA, EDWARDS LAKE AREA	SC	2021-09-24	2023-09-24	Active	1	400	100% (10004221) Solstice Gold Corp	***
678135	EDWARDS LAKE AREA	SC	2021-09-24	2023-09-24	Active	1	400	100% (10004221) Solstice Gold Corp	***
678136	EDWARDS LAKE AREA	SC	2021-09-24	2023-09-24	Active	1	400	100% (10004221) Solstice Gold Corp	***
678137	EDWARDS LAKE AREA	SC	2021-09-24	2023-09-24	Active	1	400	100% (10004221) Solstice Gold Corp	***
678138	EDWARDS LAKE AREA	SC	2021-09-24	2023-09-24	Active	1	400	100% (10004221) Solstice Gold Corp	***
678139	EDWARDS LAKE AREA	SC	2021-09-24	2023-09-24	Active	1	400	100% (10004221) Solstice Gold Corp	***
678140	EDWARDS LAKE AREA	SC	2021-09-24	2023-09-24	Active	1	400	100% (10004221) Solstice Gold Corp	***
678141	EDWARDS LAKE AREA	SC	2021-09-24	2023-09-24	Active	1	400	100% (10004221) Solstice Gold Corp	***
678142	EDWARDS LAKE AREA	SC	2021-09-24	2023-09-24	Active	1	400	100% (10004221) Solstice Gold Corp	***
678143	EDWARDS LAKE AREA	SC	2021-09-24	2023-09-24	Active	1	400	100% (10004221) Solstice Gold Corp	***
678144	EDWARDS LAKE AREA	SC	2021-09-24	2023-09-24	Active	1	400	100% (10004221) Solstice Gold Corp	***
678145	EDWARDS LAKE AREA	SC	2021-09-24	2023-09-24	Active	1	400	100% (10004221) Solstice Gold Corp	***
678146	EDWARDS LAKE AREA	SC	2021-09-24	2023-09-24	Active	1	400	100% (10004221) Solstice Gold Corp	***
678147	BELLMORE LAKE AREA	SC	2021-09-24	2023-09-24	Active	1	400	100% (10004221) Solstice Gold Corp	***
678148	BELLMORE LAKE AREA	SC	2021-09-24	2023-09-24	Active	1	400	100% (10004221) Solstice Gold Corp	***
678149	BELLMORE LAKE AREA	SC	2021-09-24	2023-09-24	Active	1	400	100% (10004221) Solstice Gold Corp	***
678150	BELLMORE LAKE AREA	SC	2021-09-24	2023-09-24	Active	1	400	100% (10004221) Solstice Gold Corp	***
678151	BELLMORE LAKE AREA, EDWARDS LAKE AREA	SC	2021-09-24	2023-09-24	Active	1	400	100% (10004221) Solstice Gold Corp	***
678152	BELLMORE LAKE AREA, EDWARDS LAKE AREA	SC	2021-09-24	2023-09-24	Active	1	400	100% (10004221) Solstice Gold Corp	***
678153	EDWARDS LAKE AREA	SC	2021-09-24	2023-09-24	Active	1	400	100% (10004221) Solstice Gold Corp	***
678154	EDWARDS LAKE AREA	SC	2021-09-24	2023-09-24	Active	1	400	100% (10004221) Solstice Gold Corp	***
678155	EDWARDS LAKE AREA	SC	2021-09-24	2023-09-24	Active	1	400	100% (10004221) Solstice Gold Corp	***
678156	EDWARDS LAKE AREA	SC	2021-09-24	2023-09-24	Active	1	400	100% (10004221) Solstice Gold Corp	***
678157	EDWARDS LAKE AREA	SC	2021-09-24	2023-09-24	Active	1	400	100% (10004221) Solstice Gold Corp	***
678158	EDWARDS LAKE AREA	SC	2021-09-24	2023-09-24	Active	1	400	100% (10004221) Solstice Gold Corp	***
678159	EDWARDS LAKE AREA	SC	2021-09-24	2023-09-24	Active	1	400	100% (10004221) Solstice Gold Corp	***



Tenure NUM	Township	Tenure	Issue Date	Anniversary Date	Status	cell#	Work Required	Recorded Holder	Denote
678160	EDWARDS LAKE AREA	SC	2021-09-24	2023-09-24	Active	1	400	100% (10004221) Solstice Gold Corp	***
678161	EDWARDS LAKE AREA	SC	2021-09-24	2023-09-24	Active	1	400	100% (10004221) Solstice Gold Corp	***
678162	EDWARDS LAKE AREA	SC	2021-09-24	2023-09-24	Active	1	400	100% (10004221) Solstice Gold Corp	***
678163	EDWARDS LAKE AREA	SC	2021-09-24	2023-09-24	Active	1	400	100% (10004221) Solstice Gold Corp	***
678164	EDWARDS LAKE AREA	SC	2021-09-24	2023-09-24	Active	1	400	100% (10004221) Solstice Gold Corp	***
678165	BELLMORE LAKE AREA	SC	2021-09-24	2023-09-24	Active	1	400	100% (10004221) Solstice Gold Corp	***
678166	BELLMORE LAKE AREA	SC	2021-09-24	2023-09-24	Active	1	400	100% (10004221) Solstice Gold Corp	***
678167	BELLMORE LAKE AREA, EDWARDS LAKE AREA	SC	2021-09-24	2023-09-24	Active	1	400	100% (10004221) Solstice Gold Corp	***
678168	BELLMORE LAKE AREA, EDWARDS LAKE AREA	SC	2021-09-24	2023-09-24	Active	1	400	100% (10004221) Solstice Gold Corp	***
678169	EDWARDS LAKE AREA	SC	2021-09-24	2023-09-24	Active	1	400	100% (10004221) Solstice Gold Corp	***
678170	EDWARDS LAKE AREA	SC	2021-09-24	2023-09-24	Active	1	400	100% (10004221) Solstice Gold Corp	***
678171	EDWARDS LAKE AREA	SC	2021-09-24	2023-09-24	Active	1	400	100% (10004221) Solstice Gold Corp	***
678172	EDWARDS LAKE AREA	SC	2021-09-24	2023-09-24	Active	1	400	100% (10004221) Solstice Gold Corp	***
678173	EDWARDS LAKE AREA	SC	2021-09-24	2023-09-24	Active	1	400	100% (10004221) Solstice Gold Corp	***
678174	EDWARDS LAKE AREA	SC	2021-09-24	2023-09-24	Active	1	400	100% (10004221) Solstice Gold Corp	***
678175	EDWARDS LAKE AREA	SC	2021-09-24	2023-09-24	Active	1	400	100% (10004221) Solstice Gold Corp	***
678176	EDWARDS LAKE AREA	SC	2021-09-24	2023-09-24	Active	1	400	100% (10004221) Solstice Gold Corp	***
678177	EDWARDS LAKE AREA	SC	2021-09-24	2023-09-24	Active	1	400	100% (10004221) Solstice Gold Corp	***
678178	EDWARDS LAKE AREA	SC	2021-09-24	2023-09-24	Active	1	400	100% (10004221) Solstice Gold Corp	***
678179	EDWARDS LAKE AREA	SC	2021-09-24	2023-09-24	Active	1	400	100% (10004221) Solstice Gold Corp	***
678180	EDWARDS LAKE AREA	SC	2021-09-24	2023-09-24	Active	1	400	100% (10004221) Solstice Gold Corp	***
678181	BELLMORE LAKE AREA, EDWARDS LAKE AREA	SC	2021-09-24	2023-09-24	Active	1	400	100% (10004221) Solstice Gold Corp	***
678182	BELLMORE LAKE AREA, EDWARDS LAKE AREA	SC	2021-09-24	2023-09-24	Active	1	400	100% (10004221) Solstice Gold Corp	***
678183	EDWARDS LAKE AREA	SC	2021-09-24	2023-09-24	Active	1	400	100% (10004221) Solstice Gold Corp	***
678184	EDWARDS LAKE AREA	SC	2021-09-24	2023-09-24	Active	1	400	100% (10004221) Solstice Gold Corp	***
678185	EDWARDS LAKE AREA	SC	2021-09-24	2023-09-24	Active	1	400	100% (10004221) Solstice Gold Corp	***
678186	EDWARDS LAKE AREA	SC	2021-09-24	2023-09-24	Active	1	400	100% (10004221) Solstice Gold Corp	***
678187	EDWARDS LAKE AREA	SC	2021-09-24	2023-09-24	Active	1	400	100% (10004221) Solstice Gold Corp	***
678188	EDWARDS LAKE AREA	SC	2021-09-24	2023-09-24	Active	1	400	100% (10004221) Solstice Gold Corp	***







Tenure NUM	Township	Tenure	Issue Date	Anniversary Date	Status	cell#	Work Required	Recorded Holder	Denote
678276	EDWARDS LAKE AREA	SC	2021-09-24	2023-09-24	Active	1	400	100% (10004221) Solstice Gold Corp	***
678277	EDWARDS LAKE AREA	SC	2021-09-24	2023-09-24	Active	1	400	100% (10004221) Solstice Gold Corp	***
678278	EDWARDS LAKE AREA	SC	2021-09-24	2023-09-24	Active	1	400	100% (10004221) Solstice Gold Corp	***
678279	EDWARDS LAKE AREA	SC	2021-09-24	2023-09-24	Active	1	400	100% (10004221) Solstice Gold Corp	***
678280	EDWARDS LAKE AREA	SC	2021-09-24	2023-09-24	Active	1	400	100% (10004221) Solstice Gold Corp	***
678281	EDWARDS LAKE AREA	SC	2021-09-24	2023-09-24	Active	1	400	100% (10004221) Solstice Gold Corp	***
678282	EDWARDS LAKE AREA	SC	2021-09-24	2023-09-24	Active	1	400	100% (10004221) Solstice Gold Corp	***
678283	EDWARDS LAKE AREA	SC	2021-09-24	2023-09-24	Active	1	400	100% (10004221) Solstice Gold Corp	***
678284	EDWARDS LAKE AREA	SC	2021-09-24	2023-09-24	Active	1	400	100% (10004221) Solstice Gold Corp	***
678285	EDWARDS LAKE AREA	SC	2021-09-24	2023-09-24	Active	1	400	100% (10004221) Solstice Gold Corp	***
678286	EDWARDS LAKE AREA	SC	2021-09-24	2023-09-24	Active	1	400	100% (10004221) Solstice Gold Corp	***
678287	BEDIVERE LAKE AREA, EDWARDS LAKE AREA	SC	2021-09-24	2023-09-24	Active	1	400	100% (10004221) Solstice Gold Corp	***
678288	BEDIVERE LAKE AREA, EDWARDS LAKE AREA	SC	2021-09-24	2023-09-24	Active	1	400	100% (10004221) Solstice Gold Corp	***
678289	EDWARDS LAKE AREA	SC	2021-09-24	2023-09-24	Active	1	400	100% (10004221) Solstice Gold Corp	***
678290	EDWARDS LAKE AREA	SC	2021-09-24	2023-09-24	Active	1	400	100% (10004221) Solstice Gold Corp	***
678291	EDWARDS LAKE AREA	SC	2021-09-24	2023-09-24	Active	1	400	100% (10004221) Solstice Gold Corp	***
678292	EDWARDS LAKE AREA	SC	2021-09-24	2023-09-24	Active	1	400	100% (10004221) Solstice Gold Corp	***
678293	EDWARDS LAKE AREA	SC	2021-09-24	2023-09-24	Active	1	400	100% (10004221) Solstice Gold Corp	***
678294	EDWARDS LAKE AREA	SC	2021-09-24	2023-09-24	Active	1	400	100% (10004221) Solstice Gold Corp	***
678295	EDWARDS LAKE AREA	SC	2021-09-24	2023-09-24	Active	1	400	100% (10004221) Solstice Gold Corp	***
678296	EDWARDS LAKE AREA	SC	2021-09-24	2023-09-24	Active	1	400	100% (10004221) Solstice Gold Corp	***
678297	EDWARDS LAKE AREA	SC	2021-09-24	2023-09-24	Active	1	400	100% (10004221) Solstice Gold Corp	***
678298	EDWARDS LAKE AREA	SC	2021-09-24	2023-09-24	Active	1	400	100% (10004221) Solstice Gold Corp	***
678299	EDWARDS LAKE AREA	SC	2021-09-24	2023-09-24	Active	1	400	100% (10004221) Solstice Gold Corp	***
678300	EDWARDS LAKE AREA	SC	2021-09-24	2023-09-24	Active	1	400	100% (10004221) Solstice Gold Corp	***
678301	EDWARDS LAKE AREA	SC	2021-09-24	2023-09-24	Active	1	400	100% (10004221) Solstice Gold Corp	***
678302	EDWARDS LAKE AREA	SC	2021-09-24	2023-09-24	Active	1	400	100% (10004221) Solstice Gold Corp	***
678303	EDWARDS LAKE AREA	SC	2021-09-24	2023-09-24	Active	1	400	100% (10004221) Solstice Gold Corp	***
678304	EDWARDS LAKE AREA	SC	2021-09-24	2023-09-24	Active	1	400	100% (10004221) Solstice Gold Corp	***



Tenure NUM	Township	Tenure	Issue Date	Anniversary Date	Status	cell#	Work Required	Recorded Holder	Denote
678305	EDWARDS LAKE AREA	SC	2021-09-24	2023-09-24	Active	1	400	100% (10004221) Solstice Gold Corp	***
678306	EDWARDS LAKE AREA	SC	2021-09-24	2023-09-24	Active	1	400	100% (10004221) Solstice Gold Corp	***
678307	EDWARDS LAKE AREA	SC	2021-09-24	2023-09-24	Active	1	400	100% (10004221) Solstice Gold Corp	***
678308	EDWARDS LAKE AREA	SC	2021-09-24	2023-09-24	Active	1	400	100% (10004221) Solstice Gold Corp	***
678309	EDWARDS LAKE AREA	SC	2021-09-24	2023-09-24	Active	1	400	100% (10004221) Solstice Gold Corp	***
678310	EDWARDS LAKE AREA	SC	2021-09-24	2023-09-24	Active	1	400	100% (10004221) Solstice Gold Corp	***
678311	EDWARDS LAKE AREA	SC	2021-09-24	2023-09-24	Active	1	400	100% (10004221) Solstice Gold Corp	***
678312	EDWARDS LAKE AREA	SC	2021-09-24	2023-09-24	Active	1	400	100% (10004221) Solstice Gold Corp	***
678313	EDWARDS LAKE AREA	SC	2021-09-24	2023-09-24	Active	1	400	100% (10004221) Solstice Gold Corp	***
678314	EDWARDS LAKE AREA	SC	2021-09-24	2023-09-24	Active	1	400	100% (10004221) Solstice Gold Corp	***
678315	EDWARDS LAKE AREA	SC	2021-09-24	2023-09-24	Active	1	400	100% (10004221) Solstice Gold Corp	***
678316	EDWARDS LAKE AREA	SC	2021-09-24	2023-09-24	Active	1	400	100% (10004221) Solstice Gold Corp	***
678317	EDWARDS LAKE AREA	SC	2021-09-24	2023-09-24	Active	1	400	100% (10004221) Solstice Gold Corp	***
678318	EDWARDS LAKE AREA	SC	2021-09-24	2023-09-24	Active	1	400	100% (10004221) Solstice Gold Corp	***
678319	EDWARDS LAKE AREA	SC	2021-09-24	2023-09-24	Active	1	400	100% (10004221) Solstice Gold Corp	***
678320	EDWARDS LAKE AREA	SC	2021-09-24	2023-09-24	Active	1	400	100% (10004221) Solstice Gold Corp	***
678321	EDWARDS LAKE AREA	SC	2021-09-24	2023-09-24	Active	1	400	100% (10004221) Solstice Gold Corp	***
678322	EDWARDS LAKE AREA	SC	2021-09-24	2023-09-24	Active	1	400	100% (10004221) Solstice Gold Corp	***
678323	EDWARDS LAKE AREA	SC	2021-09-24	2023-09-24	Active	1	400	100% (10004221) Solstice Gold Corp	***
678324	EDWARDS LAKE AREA	SC	2021-09-24	2023-09-24	Active	1	400	100% (10004221) Solstice Gold Corp	***
678325	EDWARDS LAKE AREA	SC	2021-09-24	2023-09-24	Active	1	400	100% (10004221) Solstice Gold Corp	***
678326	EDWARDS LAKE AREA	SC	2021-09-24	2023-09-24	Active	1	400	100% (10004221) Solstice Gold Corp	***
678327	EDWARDS LAKE AREA	SC	2021-09-24	2023-09-24	Active	1	400	100% (10004221) Solstice Gold Corp	***
678328	EDWARDS LAKE AREA	SC	2021-09-24	2023-09-24	Active	1	400	100% (10004221) Solstice Gold Corp	***
695694	BELLMORE LAKE AREA	SC	2021-12-08	2023-12-08	Active	1	400	100% (10004221) Solstice Gold Corp	***
695695	BELLMORE LAKE AREA	SC	2021-12-08	2023-12-08	Active	1	400	100% (10004221) Solstice Gold Corp	***
695696	BELLMORE LAKE AREA	SC	2021-12-08	2023-12-08	Active	1	400	100% (10004221) Solstice Gold Corp	***
695697	BELLMORE LAKE AREA	SC	2021-12-08	2023-12-08	Active	1	400	100% (10004221) Solstice Gold Corp	***
695698	BELLMORE LAKE AREA	SC	2021-12-08	2023-12-08	Active	1	400	100% (10004221) Solstice Gold Corp	***



Tenure NUM	Township	Tenure	Issue Date	Anniversary Date	Status	cell#	Work Required	Recorded Holder	Denote
695728	BELLMORE LAKE AREA	SC	2021-12-08	2023-12-08	Active	1	400	100% (10004221) Solstice Gold Corp	***
695729	BELLMORE LAKE AREA	SC	2021-12-08	2023-12-08	Active	1	400	100% (10004221) Solstice Gold Corp	***
695730	BELLMORE LAKE AREA	SC	2021-12-08	2023-12-08	Active	1	400	100% (10004221) Solstice Gold Corp	***
695731	BELLMORE LAKE AREA	SC	2021-12-08	2023-12-08	Active	1	400	100% (10004221) Solstice Gold Corp	***
695732	BELLMORE LAKE AREA	SC	2021-12-08	2023-12-08	Active	1	400	100% (10004221) Solstice Gold Corp	***
695733	BELLMORE LAKE AREA	SC	2021-12-08	2023-12-08	Active	1	400	100% (10004221) Solstice Gold Corp	***
695734	BELLMORE LAKE AREA	SC	2021-12-08	2023-12-08	Active	1	400	100% (10004221) Solstice Gold Corp	***
695735	BELLMORE LAKE AREA,TROTTIER	SC	2021-12-08	2023-12-08	Active	1	400	100% (10004221) Solstice Gold Corp	***
695736	BELLMORE LAKE AREA	SC	2021-12-08	2023-12-08	Active	1	400	100% (10004221) Solstice Gold Corp	***
695737	BELLMORE LAKE AREA	SC	2021-12-08	2023-12-08	Active	1	400	100% (10004221) Solstice Gold Corp	***
695738	BELLMORE LAKE AREA	SC	2021-12-08	2023-12-08	Active	1	400	100% (10004221) Solstice Gold Corp	***
695739	BELLMORE LAKE AREA	SC	2021-12-08	2023-12-08	Active	1	400	100% (10004221) Solstice Gold Corp	***
695740	BELLMORE LAKE AREA	SC	2021-12-08	2023-12-08	Active	1	400	100% (10004221) Solstice Gold Corp	***
695741	BELLMORE LAKE AREA	SC	2021-12-08	2023-12-08	Active	1	400	100% (10004221) Solstice Gold Corp	***
695742	BELLMORE LAKE AREA	SC	2021-12-08	2023-12-08	Active	1	400	100% (10004221) Solstice Gold Corp	***
695743	BELLMORE LAKE AREA	SC	2021-12-08	2023-12-08	Active	1	400	100% (10004221) Solstice Gold Corp	***
695744	BELLMORE LAKE AREA	MC	2021-12-08	2023-12-08	Active	25	10000	100% (10004221) Solstice Gold Corp	***
695745	BELLMORE LAKE AREA	MC	2021-12-08	2023-12-08	Active	25	10000	100% (10004221) Solstice Gold Corp	***
695746	BELLMORE LAKE AREA	MC	2021-12-08	2023-12-08	Active	23	9200	100% (10004221) Solstice Gold Corp	***
695747	BELLMORE LAKE AREA	MC	2021-12-08	2023-12-08	Active	25	10000	100% (10004221) Solstice Gold Corp	***
695748	BELLMORE LAKE AREA	MC	2021-12-08	2023-12-08	Active	25	10000	100% (10004221) Solstice Gold Corp	***
695749	BELLMORE LAKE AREA	MC	2021-12-08	2023-12-08	Active	25	10000	100% (10004221) Solstice Gold Corp	***
695750	BELLMORE LAKE AREA	MC	2021-12-08	2023-12-08	Active	25	10000	100% (10004221) Solstice Gold Corp	***
695751	BELLMORE LAKE AREA	MC	2021-12-08	2023-12-08	Active	25	10000	100% (10004221) Solstice Gold Corp	***
695752	BELLMORE LAKE AREA	MC	2021-12-08	2023-12-08	Active	25	10000	100% (10004221) Solstice Gold Corp	***
695753	BELLMORE LAKE AREA	MC	2021-12-08	2023-12-08	Active	10	4000	100% (10004221) Solstice Gold Corp	***
695754	TROTTIER	SC	2021-12-08	2023-12-08	Active	1	400	100% (10004221) Solstice Gold Corp	***
695755	BELLMORE LAKE AREA,TROTTIER	SC	2021-12-08	2023-12-08	Active	1	400	100% (10004221) Solstice Gold Corp	***
695756	TROTTIER	SC	2021-12-08	2023-12-08	Active	1	400	100% (10004221) Solstice Gold Corp	***

Tenure NUM	Township	Tenure	Issue Date	Anniversary Date	Status	cell#	Work Required	Recorded Holder	Denote
695757	TROTTIER	SC	2021-12-08	2023-12-08	Active	1	400	100% (10004221) Solstice Gold Corp	***
695758	TROTTIER	SC	2021-12-08	2023-12-08	Active	1	400	100% (10004221) Solstice Gold Corp	***
695759	TROTTIER	SC	2021-12-08	2023-12-08	Active	1	400	100% (10004221) Solstice Gold Corp	***
695760	TROTTIER	SC	2021-12-08	2023-12-08	Active	1	400	100% (10004221) Solstice Gold Corp	***
695761	TROTTIER	SC	2021-12-08	2023-12-08	Active	1	400	100% (10004221) Solstice Gold Corp	***
695762	TROTTIER	SC	2021-12-08	2023-12-08	Active	1	400	100% (10004221) Solstice Gold Corp	***
695763	TROTTIER	SC	2021-12-08	2023-12-08	Active	1	400	100% (10004221) Solstice Gold Corp	***
695764	TROTTIER	SC	2021-12-08	2023-12-08	Active	1	400	100% (10004221) Solstice Gold Corp	***
695765	TROTTIER	SC	2021-12-08	2023-12-08	Active	1	400	100% (10004221) Solstice Gold Corp	***
695766	TROTTIER	SC	2021-12-08	2023-12-08	Active	1	400	100% (10004221) Solstice Gold Corp	***
695767	TROTTIER	SC	2021-12-08	2023-12-08	Active	1	400	100% (10004221) Solstice Gold Corp	***
695768	TROTTIER	SC	2021-12-08	2023-12-08	Active	1	400	100% (10004221) Solstice Gold Corp	***
695769	TROTTIER	SC	2021-12-08	2023-12-08	Active	1	400	100% (10004221) Solstice Gold Corp	***
695770	TROTTIER	SC	2021-12-08	2023-12-08	Active	1	400	100% (10004221) Solstice Gold Corp	***
695771	TROTTIER	SC	2021-12-08	2023-12-08	Active	1	400	100% (10004221) Solstice Gold Corp	***
695772	TROTTIER	SC	2021-12-08	2023-12-08	Active	1	400	100% (10004221) Solstice Gold Corp	***
695773	TROTTIER	SC	2021-12-08	2023-12-08	Active	1	400	100% (10004221) Solstice Gold Corp	***
695774	TROTTIER	SC	2021-12-08	2023-12-08	Active	1	400	100% (10004221) Solstice Gold Corp	***
695775	TROTTIER	SC	2021-12-08	2023-12-08	Active	1	400	100% (10004221) Solstice Gold Corp	***
695776	TROTTIER	SC	2021-12-08	2023-12-08	Active	1	400	100% (10004221) Solstice Gold Corp	***
695777	TROTTIER	SC	2021-12-08	2023-12-08	Active	1	400	100% (10004221) Solstice Gold Corp	***
695778	BELLMORE LAKE AREA, TROTTIER	SC	2021-12-08	2023-12-08	Active	1	400	100% (10004221) Solstice Gold Corp	***
695779	HUTCHINSON, TROTTIER	MC	2021-12-08	2023-12-08	Active	21	8400	100% (10004221) Solstice Gold Corp	***
695780	HUTCHINSON, TROTTIER	MC	2021-12-08	2023-12-08	Active	7	2800	100% (10004221) Solstice Gold Corp	***
695781	BELLMORE LAKE AREA, EDWARDS LAKE AREA	MC	2021-12-08	2023-12-08	Active	25	10000	100% (10004221) Solstice Gold Corp	***
695782	BELLMORE LAKE AREA	SC	2021-12-08	2023-12-08	Active	1	400	100% (10004221) Solstice Gold Corp	***
695783	BELLMORE LAKE AREA, EDWARDS LAKE AREA	SC	2021-12-08	2023-12-08	Active	1	400	100% (10004221) Solstice Gold Corp	***
695784	BELLMORE LAKE AREA, EDWARDS LAKE AREA	SC	2021-12-08	2023-12-08	Active	1	400	100% (10004221) Solstice Gold Corp	***
695785	BELLMORE LAKE AREA, EDWARDS LAKE AREA	SC	2021-12-08	2023-12-08	Active	1	400	100% (10004221) Solstice Gold Corp	***

Tenure NUM	Township	Tenure	Issue Date	Anniversary Date	Status	cell#	Work Required	Recorded Holder	Denote
695786	BELLMORE LAKE AREA, EDWARDS LAKE AREA	SC	2021-12-08	2023-12-08	Active	1	400	100% (10004221) Solstice Gold Corp	***
695787	BELLMORE LAKE AREA, EDWARDS LAKE AREA	SC	2021-12-08	2023-12-08	Active	1	400	100% (10004221) Solstice Gold Corp	***
695788	BELLMORE LAKE AREA, EDWARDS LAKE AREA	SC	2021-12-08	2023-12-08	Active	1	400	100% (10004221) Solstice Gold Corp	***
695789	BELLMORE LAKE AREA	SC	2021-12-08	2023-12-08	Active	1	400	100% (10004221) Solstice Gold Corp	***
695790	BELLMORE LAKE AREA	SC	2021-12-08	2023-12-08	Active	1	400	100% (10004221) Solstice Gold Corp	***
695791	BELLMORE LAKE AREA	SC	2021-12-08	2023-12-08	Active	1	400	100% (10004221) Solstice Gold Corp	***
695792	BELLMORE LAKE AREA	SC	2021-12-08	2023-12-08	Active	1	400	100% (10004221) Solstice Gold Corp	***
695793	BELLMORE LAKE AREA	SC	2021-12-08	2023-12-08	Active	1	400	100% (10004221) Solstice Gold Corp	***
695794	BELLMORE LAKE AREA	SC	2021-12-08	2023-12-08	Active	1	400	100% (10004221) Solstice Gold Corp	***
695795	BELLMORE LAKE AREA	SC	2021-12-08	2023-12-08	Active	1	400	100% (10004221) Solstice Gold Corp	***
695796	BELLMORE LAKE AREA, EDWARDS LAKE AREA	SC	2021-12-08	2023-12-08	Active	1	400	100% (10004221) Solstice Gold Corp	***
695797	BELLMORE LAKE AREA	SC	2021-12-08	2023-12-08	Active	1	400	100% (10004221) Solstice Gold Corp	***
695798	BELLMORE LAKE AREA, EDWARDS LAKE AREA	SC	2021-12-08	2023-12-08	Active	1	400	100% (10004221) Solstice Gold Corp	***
695799	BELLMORE LAKE AREA	SC	2021-12-08	2023-12-08	Active	1	400	100% (10004221) Solstice Gold Corp	***
695800	BELLMORE LAKE AREA	SC	2021-12-08	2023-12-08	Active	1	400	100% (10004221) Solstice Gold Corp	***
695801	BELLMORE LAKE AREA, EDWARDS LAKE AREA	SC	2021-12-08	2023-12-08	Active	1	400	100% (10004221) Solstice Gold Corp	***
695802	BELLMORE LAKE AREA	SC	2021-12-08	2023-12-08	Active	1	400	100% (10004221) Solstice Gold Corp	***
695803	BELLMORE LAKE AREA, EDWARDS LAKE AREA	SC	2021-12-08	2023-12-08	Active	1	400	100% (10004221) Solstice Gold Corp	***
700386	WEAVER	MC	2021-12-08	2024-01-07	Active	2	800	100% (10004221) Solstice Gold Corp	***
700387	TROTTIER	SC	2021-12-08	2024-01-08	Active	1	400	100% (10004221) Solstice Gold Corp	***
700388	TROTTIER	SC	2021-12-08	2024-01-08	Active	1	400	100% (10004221) Solstice Gold Corp	***
700389	TROTTIER	SC	2021-12-08	2024-01-08	Active	1	400	100% (10004221) Solstice Gold Corp	***
700390	TROTTIER	SC	2021-12-08	2024-01-08	Active	1	400	100% (10004221) Solstice Gold Corp	***
700391	TROTTIER, WEAVER	SC	2021-12-08	2024-01-08	Active	1	400	100% (10004221) Solstice Gold Corp	***
700392	WEAVER	SC	2021-12-08	2024-01-08	Active	1	400	100% (10004221) Solstice Gold Corp	***
716425	EDWARDS LAKE AREA	MC	2022-03-31	2024-03-31	Active	25	10000	100% (10004221) Solstice Gold Corp	****
716451	EDWARDS LAKE AREA	MC	2022-03-31	2024-03-31	Active	13	5200	100% (10004221) Solstice Gold Corp	****
716452	EDWARDS LAKE AREA	MC	2022-03-31	2024-03-31	Active	25	10000	100% (10004221) Solstice Gold Corp	****
716453	EDWARDS LAKE AREA	MC	2022-03-31	2024-03-31	Active	25	10000	100% (10004221) Solstice Gold Corp	****



Tenure NUM	Township	Tenure	Issue Date	Anniversary Date	Status	cell#	Work Required	Recorded Holder	Denote
716454	EDWARDS LAKE AREA	MC	2022-03-31	2024-03-31	Active	25	10000	100% (10004221) Solstice Gold Corp	****
716455	EDWARDS LAKE AREA	MC	2022-03-31	2024-03-31	Active	25	10000	100% (10004221) Solstice Gold Corp	****
716456	EDWARDS LAKE AREA	MC	2022-03-31	2024-03-31	Active	25	10000	100% (10004221) Solstice Gold Corp	****
716457	EDWARDS LAKE AREA	MC	2022-03-31	2024-03-31	Active	10	4000	100% (10004221) Solstice Gold Corp	****
732012	BELLMORE LAKE AREA	MC	2022-06-13	2024-03-31	Active	24	9600	100% (10004221) Solstice Gold Corp	*****
732013	BELLMORE LAKE AREA	MC	2022-06-13	2024-03-31	Active	24	9600	100% (10004221) Solstice Gold Corp	*****
732014	BELLMORE LAKE AREA	MC	2022-06-13	2024-03-31	Active	24	9600	100% (10004221) Solstice Gold Corp	*****
732015	BELLMORE LAKE AREA	MC	2022-06-13	2024-03-31	Active	25	10000	100% (10004221) Solstice Gold Corp	*****
732016	EDWARDS LAKE AREA	MC	2022-06-13	2024-03-31	Active	25	10000	100% (10004221) Solstice Gold Corp	*****



# LIDAR Survey – Acquisition and Processing Report

8/6/2022

Solstice Gold Corp

**Prepared for:**

Solstice Gold Corp  
Suite 550 - 800 West Pender Street  
Vancouver, BC V6C 2V6

**Prepared by:**

KBM Resources Group  
349 Mooney Ave.  
Thunder Bay, ON P7B 5L5

**Solstice Gold Corp Contact:**

Dana Dobrescu  
Email: [ddobrescu@solsticegold.com](mailto:ddobrescu@solsticegold.com)

**KBM Contact:**

Shawn Mizon  
Tel: +1-807-345-5445 x226  
Email: [smizon@kbm.ca](mailto:smizon@kbm.ca)

# Contents

<b>1. PROJECT OVERVIEW.....</b>	<b>1</b>
Project Area .....	1
Data Acquisition Requirements .....	2
LIDAR .....	2
Geodetic parameters .....	2
LIDAR .....	2
<b>2. DATA PROCESSING.....</b>	<b>3</b>
Calibration .....	3
Positioning .....	3
LIDAR Point cloud processing .....	3
<b>3. ACCURACY ASSESSMENT .....</b>	<b>4</b>
SBET accuracy .....	4
LIDAR absolute vertical accuracy .....	4
LIDAR relative vertical accuracy .....	4
LIDAR density .....	5
Attachments.....	5

## 1. PROJECT OVERVIEW

Solstice Gold contracted KBM Resources Group to acquire LIDAR near Atikokan, Ontario. The following is a report that outlines data acquisition, processing and accuracy assessment procedures used for delivered LIDAR for the project. Data were acquired over the project area on 14-May-2022.

### Project Area

Figure 1 is an overview of the project area that covers approximately 391 sq. km. The area designated in red represents the area acquired

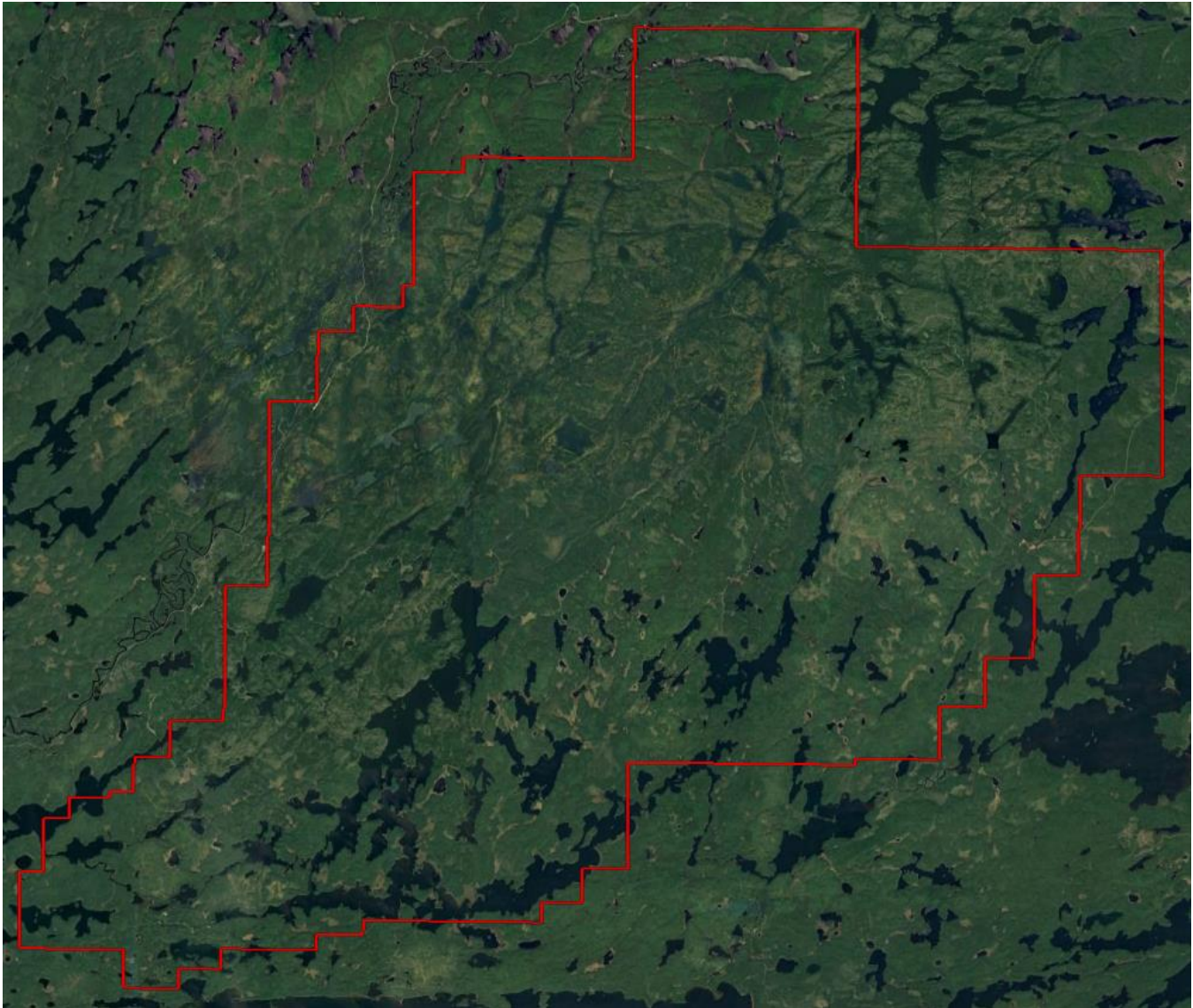


FIGURE 1: OVERVIEW OF SURVEY AREA

## Data Acquisition Requirements

The survey was planned to achieve the following requirements:

### LIDAR

- Minimum pulse density 6 pulses/sq. m

### Geodetic parameters

All positional data were processed to the following geodetic parameters,

Horizontal datum : NAD83(CSRS), Epoch 2010.00

Vertical datum : CGVD2013 using CGG2013

Projection : UTM Zone 15 - North

### LIDAR

Planned LIDAR acquisition specifications were as follows:

Laser scanner manufacturer and model : Riegl VQ-780ii

Laser pulse repetition frequency (PRF) : 1702 kHz

Laser scan frequency : 208 Hz

Flying height : 1540 m above ground level

Flying Speed : 67 m/s

Max. scan angle : +/-30° from nadir (60° field of view)

Pulse density (avg. per swath) : 9.54points per sq. m



## 2. DATA PROCESSING

### Calibration

A complete and rigorous calibration for boresight and lens distortion offsets occurs two to three times a year or if equipment is changed or dismantled from the aircraft frame. The last calibration was performed on 6-MAY-2022. After acquisition, roll, pitch, heading and scale offsets are reconfirmed during the processing workflow using overlapping features in opposing and/or perpendicular flightlines.

### Positioning

The positioning workflow requires precise coordinates over a static point or a network of static points to position the aircraft trajectory. For this area, a network Can-Net active control stations were used to generate virtual reference stations for each acquisition session. Additional information including base coordinates can be found in attached trajectory quality check documents.

### LIDAR Point cloud processing

The LIDAR point-cloud processing workflow includes, extracting the range point-cloud from LIDAR sensor, transforming the point-cloud into real-world coordinates by combining the SBET with LIDAR ranges, checking and correcting relative and global offsets, tiling data into 1km x 1km tiles, extracting ground points, de-noising and quality checks. The following is a summary of each step in the workflow

Processing Step	Software used
Extract discrete LIDAR returns from raw pulse waveform data with range, precise timestamp and other attributes such as intensity and scan angle.	RiAnalyze v7.1.1
Combine ranges and SBET using timestamps to generate a globally referenced LIDAR point cloud, apply a CGVD2013 geoid correction to convert elevations to orthometric heights and export point cloud in LAS 1.2 format. Three-dimensional projected UTM grid position, GPS timestamp, scan angle and flightline attributes are maintained. Data are checked for minor (< 5cm) relative and absolute vertical offsets and adjusted if necessary.	RiProcess v1.9.2, Terramatch v22
Eliminate outliers such as multipath and mid-air returns (class 7), segment data into manageable 1000 m x 1000 m tiles each with point-clouds classified as ground points (class 2) and non-ground (class 1).	LASTools v20 and custom KBM software.
Manual inspection and quality checks for missing outliers or misclassification. Correct if required.	Terrascan v22

### 3. ACCURACY ASSESSMENT

A general accuracy assessment is as follows:

#### **SBET accuracy**

Detailed assessment of trajectory can be found in attached diagnostic QC reports

#### **LIDAR absolute vertical accuracy**

Due to the lack of ground control data absolute accuracy has not been assessed.

#### **LIDAR relative vertical accuracy**

To assess relative accuracy, elevation differences between overlapping flightlines were used. Open-water areas were not used for comparison. Average relative accuracy of all data acquired is -0.00007 m.

Flightline	dZ
13400	0.002
13401	0.007
13402	0.008
13403	0.006
13404	0.002
13405	0.003
13406	0.000
13407	0.008
13408	0.003
13409	0.003
13410	0.007
13411	0.006
13412	0.006
13413	-0.002
13414	0.001
13415	0.002
13416	0.002
13417	0.001
13418	-0.008
13419	-0.007
13420	-0.002
13421	-0.01
13422	-0.009
13423	-0.006
13424	-0.012
13425	-0.013

## LIDAR density

Calculated average point density of last returns only for the area of interest is 13.6 pulses/sq. m. Figure 2 is a visual illustration of pulse density over the area of interest.

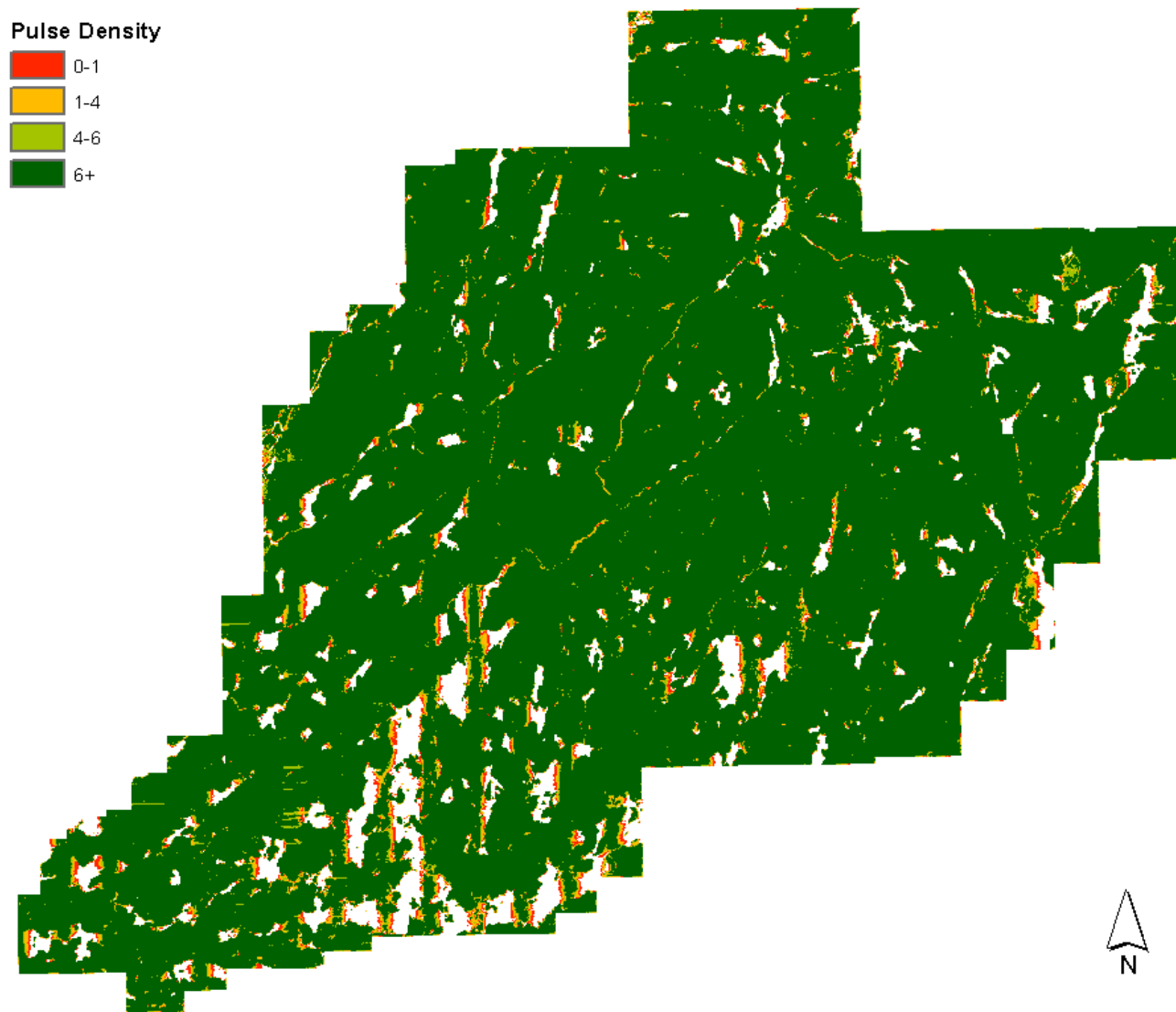


FIGURE 2: AGGREGATE LIDAR DENSITY MAP (LAST RETURNS ONLY)

## Attachments

Trajectory diagnostic QC assessment -

20220514\_Solstice\_Gold\_PPX\_QC.pdf

Work Type	Work Subtype	From Date	To Date	Unit of Work
Airborne Geophysical Survey Work	Lidar survey	5/14/2022	5/15/2022	sq km
Report/Map	Report writing, maps	16-May-22	31-May-22	days

391 sq km in total



Cost/Unit	Actual Cost
\$133.80	\$52,319
525	\$2,625
	<b>54,944</b>