

We are committed to providing [accessible customer service](#).

If you need accessible formats or communications supports, please [contact us](#).

Nous tenons à améliorer [l'accessibilité des services à la clientèle](#).

Si vous avez besoin de formats accessibles ou d'aide à la communication, veuillez [nous contacter](#).

# Skead Holdings Ltd.

## **Abstract**

Canadian Exploration Services Limited (CXS) performed a grassroots prospecting program for Skead Holdings Ltd. over a portion of the Aberdeen property. The crew accessed the site on May 16<sup>th</sup>, 2022. The prospecting survey was designed to locate historic showings and any outcrops encountered during the traverse. To accomplish this, traverses were performed to target these previously mentioned points of interest. Also, random traverses were performed over the prospecting areas to try and cover as much ground as possible. Any outcrop encountered had a representative rock sample taken. A total of 30 samples were collected and sent to the client.

## **Skead Holdings Ltd**

**Q3015 – Aberdeen Property  
Grass Roots Prospecting Program**

**C Jason Ploeger, P.Geol.  
Macpherson Williams**

**July 5<sup>th</sup>, 2022**

## TABLE OF CONTENTS

<b>1.</b>	<b>SURVEY DETAILS .....</b>	<b>10</b>
1.1	PROJECT NAME .....	10
1.2	CLIENT .....	10
1.3	SUMMARY .....	10
1.4	LOCATION .....	11
1.5	ACCESS .....	11
1.6	OWNERSHIP .....	12
1.7	GENERAL GEOLOGY .....	13
1.8	PROPERTY HISTORY .....	13
<b>2.</b>	<b>PROSPECTING .....</b>	<b>15</b>
2.1	OVERVIEW .....	15
2.2	PLANS & PERMITS .....	16
2.3	DAILY LOG .....	16
2.4	PERSONNEL .....	16
2.5	TRAVERSE SPECIFICATIONS .....	16
<b>3.</b>	<b>RESULTS .....</b>	<b>17</b>
3.1	SUMMARY OF SAMPLES COLLECTED .....	17
3.2	DAY 1 – MAY 17, 2022 .....	18
3.3	DAY 2 – MAY 18, 2022 .....	26
3.4	DAY 3 – MAY 19, 2022 .....	43

## LIST OF APPENDICES

<b>APPENDIX A .....</b>	<b>STATEMENT OF QUALIFICATIONS</b>
<b>APPENDIX B .....</b>	<b>INSTRUMENT SPECIFICATIONS</b>
<b>APPENDIX C .....</b>	<b>LIST OF MAPS (IN MAP POCKET)</b>

## LIST OF TABLES AND FIGURES

Figure 1: Location of Aberdeen Property .....	11
Figure 2: All Traverses .....	15
Figure 3: Traverse conducted on May 17th, 2022 .....	18
Figure 4: Cross-section of Sample 1003 .....	19
Figure 5: Cross Section of Sample 1004 .....	20
Figure 6: Cross Section of Sample 1005 .....	21
Figure 7: Cross Section of Sample 1006 .....	22
Figure 8: Cross Section of Sample 1101 .....	23

---

Figure 9: Cross Section of Sample 1102 .....	24
Figure 10: Cross Section of Sample 1103 .....	25
Figure 11: Location of traverse on May 18th, 2022 .....	26
Figure 12: Previous Trench work located .....	27
Figure 13: Previous Trench work located .....	28
Figure 14: Cross Section of Sample 1007 .....	29
Figure 15: Cross Section of Sample 1008 .....	30
Figure 16: Cross Section of Sample 1009 .....	31
Figure 17: Cross Section of Sample 1010 .....	32
Figure 18: Cross Section of Sample 1011 .....	33
Figure 19: Cross Section of Sample 1012 .....	34
Figure 20: Cross Section of Sample 1104 .....	35
Figure 21: Cross Section of Sample 1105 .....	36
Figure 22: Cross Section of Sample 1106 .....	37
Figure 23: Cross Section of Sample 1107 .....	38
Figure 24: Cross Section of Sample 1108 .....	39
Figure 25: Cross Section of Sample 1109 .....	40
Figure 26: Cross Section of Sample 1110 .....	41
Figure 27: Traverse conducted on May 19th, 2022 .....	42
Figure 28: Cross Section of Sample 1013 .....	43
Figure 29: Cross Section of Sample 1014 .....	44
Figure 30: Cross Section of Sample 1015 .....	45
Figure 31: Cross Section of Sample 1111 .....	46
Figure 32: Cross Section of Sample 1112 .....	47
Figure 33: Cross Section of Sample 1113 .....	48
Figure 34: Cross Section of Sample 1114 .....	49
Figure 35: Cross Section of Sample 1115 .....	50
Figure 36: Cross Section of Sample 1116 .....	51
Figure 37: Cross Section of Sample 1201 .....	52
Table 1: List of Cell Claims .....	12
Table 2: Daily Prospecting Log.....	16
Table 3: Summary of Samples Collected .....	17
Table 4: Features Located.....	17



---

## 1. SURVEY DETAILS

### 1.1 PROJECT NAME

This project is known as the **Aberdeen Property**.

### 1.2 CLIENT

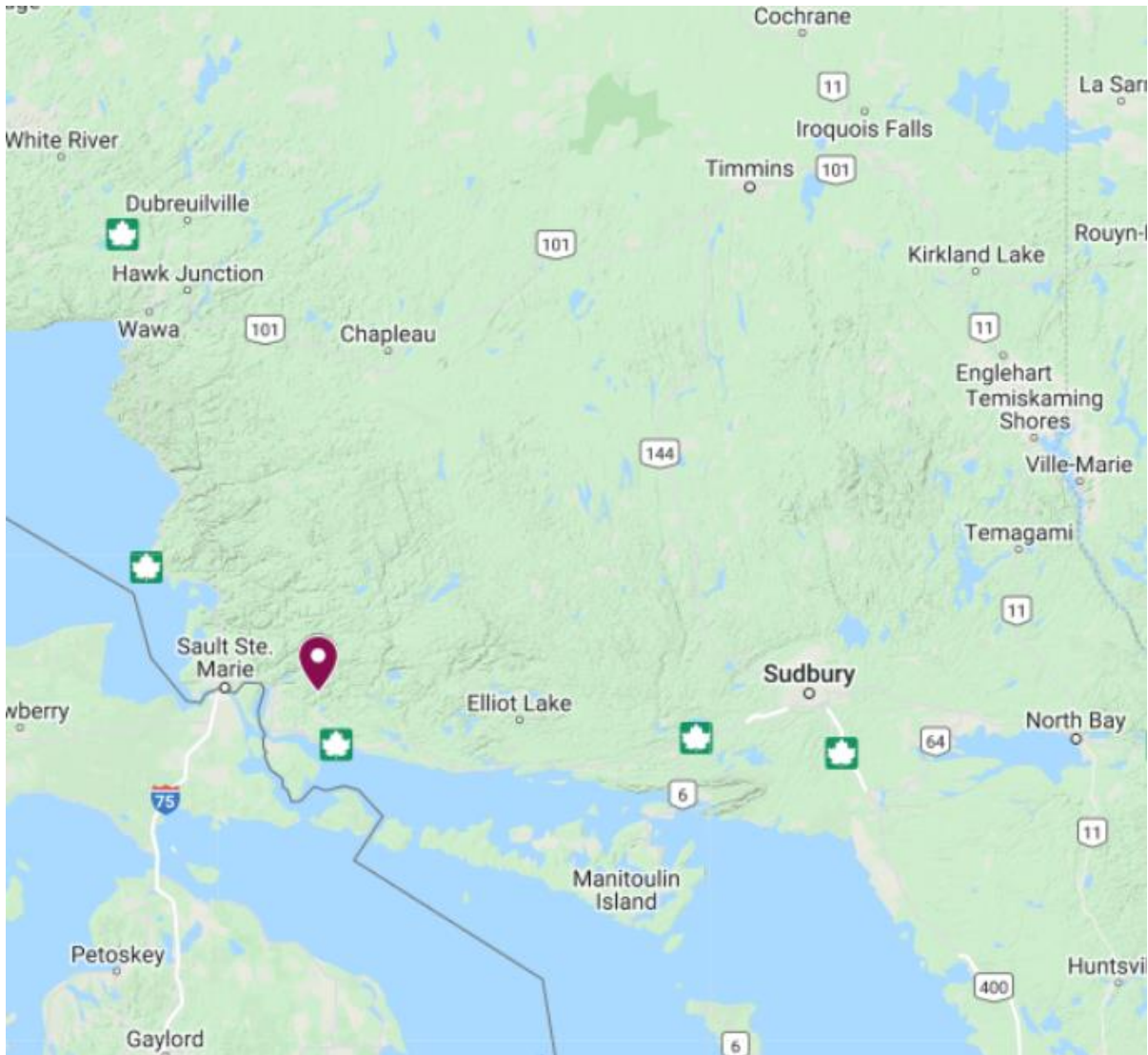
Skead Holdings Ltd.  
28 Ford St.  
Sault Ste. Marie, Ontario  
P6A 4N4

### 1.3 SUMMARY

Canadian Exploration Services Limited (CXS) performed a grassroots prospecting program for Skead Holdings Ltd. over a portion of the Aberdeen property in May of 2022. The prospecting survey was designed to locate historic showings and any outcrops encountered during the traverse. To accomplish this, traverses were performed to target these previously mentioned points of interest. Also, random traverses were performed over the prospecting areas to try and cover as much ground as possible. Any outcrop encountered had a representative rock sample taken. A total of 30 samples were collected and sent to the client.

## 1.4 LOCATION

The Aberdeen Property is located approximately 19.0 kilometres east of Echo Bay, Ontario. The survey on the property covers a portion of mining claims 628495, 628496, 628461, 628462, 628463, 628467, 628498, 628499, 628500, 628501, 628502, 628503, 628506 and 628507 all located in Aberdeen Township, within the Sault Ste. Marie Mining Division.



***Figure 1: Location of Aberdeen Property***

## 1.5 ACCESS

Access to the Aberdeen Property was attained with a 4x4 truck and ATV via Bass Lake Road. From Echo Bay, Highway 638 was travelled 22.5 kilometres east to Bass Lake Road. The Bass Lake Road was travelled an additional 3.5 km; from there, an ATV was used to access portions of the survey area.

## 1.6 OWNERSHIP

Claim Number	Provincial ID	Holder	Township
628495	41J12C368	SKEAD HOLDINGS LTD.	Aberdeen
628496	41J12C369	SKEAD HOLDINGS LTD.	Aberdeen
628461	41J12C388	SKEAD HOLDINGS LTD.	Aberdeen
628462	41J12C389	SKEAD HOLDINGS LTD.	Aberdeen
628463	41J12C390	SKEAD HOLDINGS LTD.	Aberdeen
628467	41J05K009	SKEAD HOLDINGS LTD.	Aberdeen
628498	41J05K032	SKEAD HOLDINGS LTD.	Aberdeen
628499	41J05K033	SKEAD HOLDINGS LTD.	Aberdeen
628500	41J05K052	SKEAD HOLDINGS LTD.	Aberdeen
628501	41J05K053	SKEAD HOLDINGS LTD.	Aberdeen
628502	41J05K054	SKEAD HOLDINGS LTD.	Aberdeen
628503	41J05K055	SKEAD HOLDINGS LTD.	Aberdeen
628506	41J05K074	SKEAD HOLDINGS LTD.	Aberdeen
628507	41J05K075	SKEAD HOLDINGS LTD.	Aberdeen

**Table 1: List of Cell Claims**

---

## 1.7 GENERAL GEOLOGY

Taken from MacGregor, 1986

This property and its claims lie in the Southern Geological Province and are underlain by Middle Precambrian rocks of the Huronian Supergroup. An assemblage of sedimentary and volcanic rocks makes up the Huronian Supergroup and consists of homocline striking WNW-ESE and is intruded by sheets, sills, and dykes of the Nipissing Diabase. Faulting in the region also follows a WNW-ESE trend and is potentially related to the major Murray Fault located approximately 8 miles south.

## 1.8 PROPERTY HISTORY

There have been many historical exploration projects conducted over the years, all over the survey area. The following list describes details of the previous geoscience work which was collected by the Mines and Minerals Division and provided by OGSEarth (MNDM & OGSEarth, 2022).

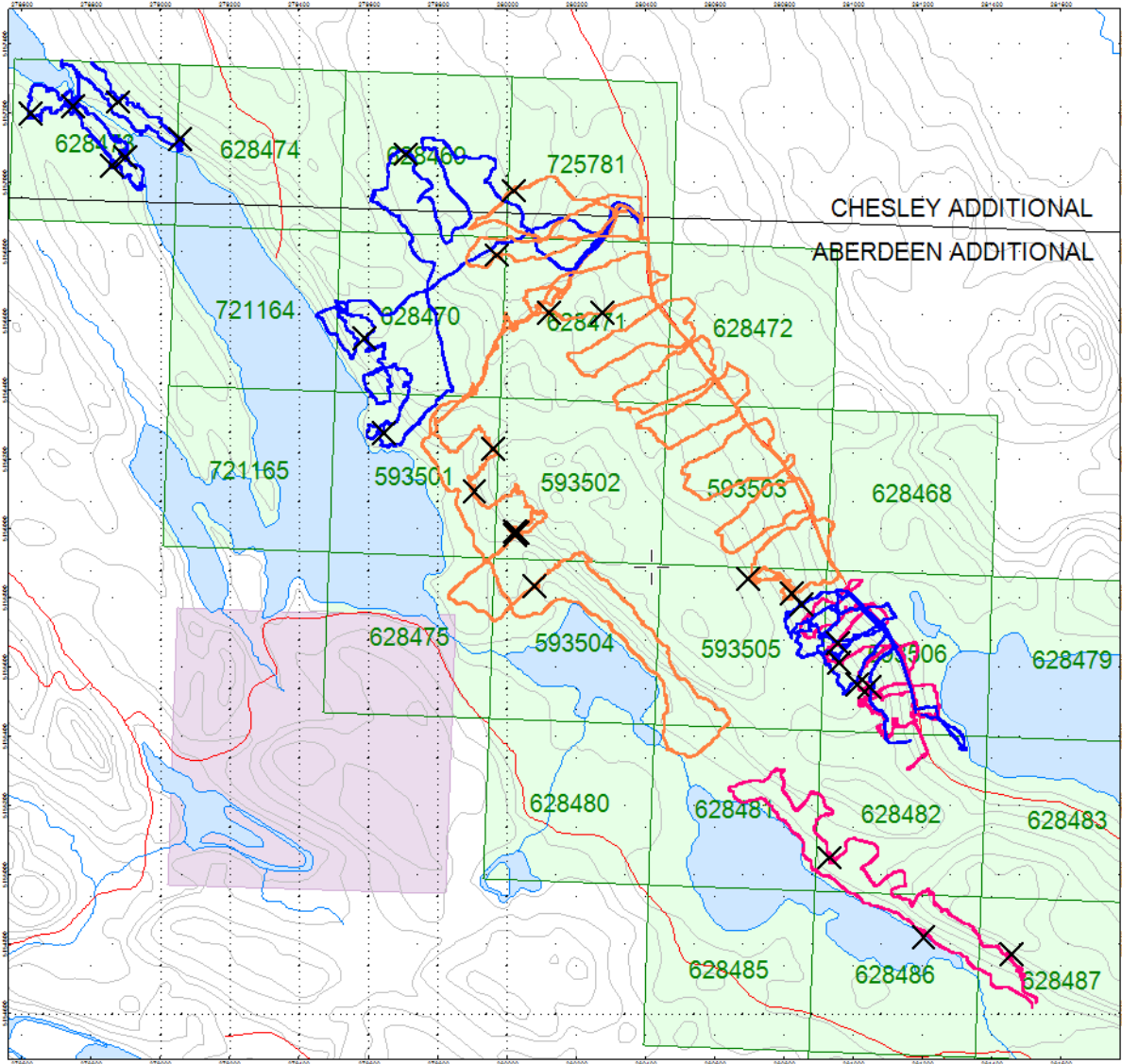
- **1963 – 1964: A Laframboise, Conwest Exploration Company Ltd, New Senator-Rouyn Ltd. (File 41J12SW0026)**  
***Geological, Physical, and Diamond Drilling***  
In 1963 and 1964 Laframboise et al. reported geological mapping and bed-rock trenching. They also reported drilling 33 drill holes totalling 3514 feet.
- **1968: Canadian Johns-Manville Company Ltd. (File 41J12SW0012)**  
***Airborne Geophysics***  
In 1968 Canadian John-Manville reported flying an airborne EM, radiometric, and magnetometer survey.
- **1970 – 1971: Safari Exploration Ltd. (Files 41J12SW0023, 41J12SW0028, and 41J12SW0029)**  
***Ground Geophysical, Geological, and Geochemical***  
In 1970 and 1970 Safari reported performing geological mapping and assaying, as well as performing an IP survey.
- **1971: Gulf Minerals Ltd. (File 41J12SW0016)**  
***Diamond Drilling***  
In 1971 Gulf Minerals reported drilling 3 drill holes totalling 4043 feet.
- **1974: Cavalier Energy Inc. (Files 41J12SW0027, 41J12SW0027, and 41J1SW9467)**  
***Diamond Drilling and other***  
In 1974 Cavalier reporting drilling 3 holes totalling 524.3 feet. Cavalier also reported writing a prospectus report.

- 
- **1986: Brink Mining & Resources Ltd. (File 41J05NW0001)**  
***Geochemical***  
In 1986 Brink reported some sampling being performed.
  - **2018: Battery Mineral Resources Ltd. (File 20000017205)**  
***Airborne Geophysics***  
In 2018 Battery reported flying an airborne magnetometer, EM, and radio-metric survey.
  - **2020 – 2021: Ewegeniy Seminenko (File 20000019678)**  
***Geochemical***  
In 2020 and 2021 Seminenko reported some sampling being performed.

**2. PROSPECTING**

**2.1 OVERVIEW**

In May of 2022, prospecting was completed over the Aberdeen Project in order to investigate historic features such as shafts, pits, trenches, and stripped areas along with any outcrops and mineralization encountered.



**Figure 2: All Traverses**



---

## 2.2 PLANS & PERMITS

The prospecting work reported on here was surficial and did not require any plans or permits.

## 2.3 DAILY LOG

Date	Description
May 16th, 2022	Mobilization to the prospecting area.
May 17th, 2022	Locate access and begin prospecting traverses.
May 18th, 2022	Complete with prospecting traverses in the middle into west outlined areas.
May 19th, 2022	Continue with prospecting and complete prospecting traverses in the west area.
May 20th, 2022	Demobilization from the prospecting area, back to Larder Lake, Ontario.

**Table 2: Daily Prospecting Log**

## 2.4 PERSONNEL

Bruce Lavalley and Mike Sheldon of Dobie, Ontario, and Larder Lake, Ontario, represented the prospecting crew.

## 2.5 TRAVERSE SPECIFICATIONS

The property boundary along with specific target areas, were identified and uploaded to a GPS. This boundary acted as a constraint for the prospecting traverse.

At each sample site, a long bright orange ribbon was hung with only the sample number listed with a black marker. Below the ribbon, the sample was taken. Using a rock hammer, rock was broken up and sampled. The sample was placed in a plastic sampling bag with a sample tag and taped closed. The sample number was recorded on the sampling bag as well. The sample is then put into a packsack for transportation.

While sampling, a picture is taken of the satellite information on the GPS at that sample's specific location.

At the end of the day, the samples are put into white "rice" bags. These bags are sealed and kept by the crew each day. The GPSs were also downloaded, which identified sample locations and traverse routes.

### 3. RESULTS

ALL SAMPLES WERE TAKEN FOR REFERENCE PURPOSES ONLY. ALL SAMPLES WERE PRESENTED TO SKEAD HOLDINGS LTD.

#### 3.1 SUMMARY OF SAMPLES COLLECTED

Rock Samples Collected	
Date	Sample Number
May 17, 2022	1003 – 1006
	1101 – 1103
May 18, 2022	1007 – 1012
	1104 – 1110
May 19, 2022	1013 – 1015
	1111 – 1116
	1201

**Table 3: Summary of Samples Collected**

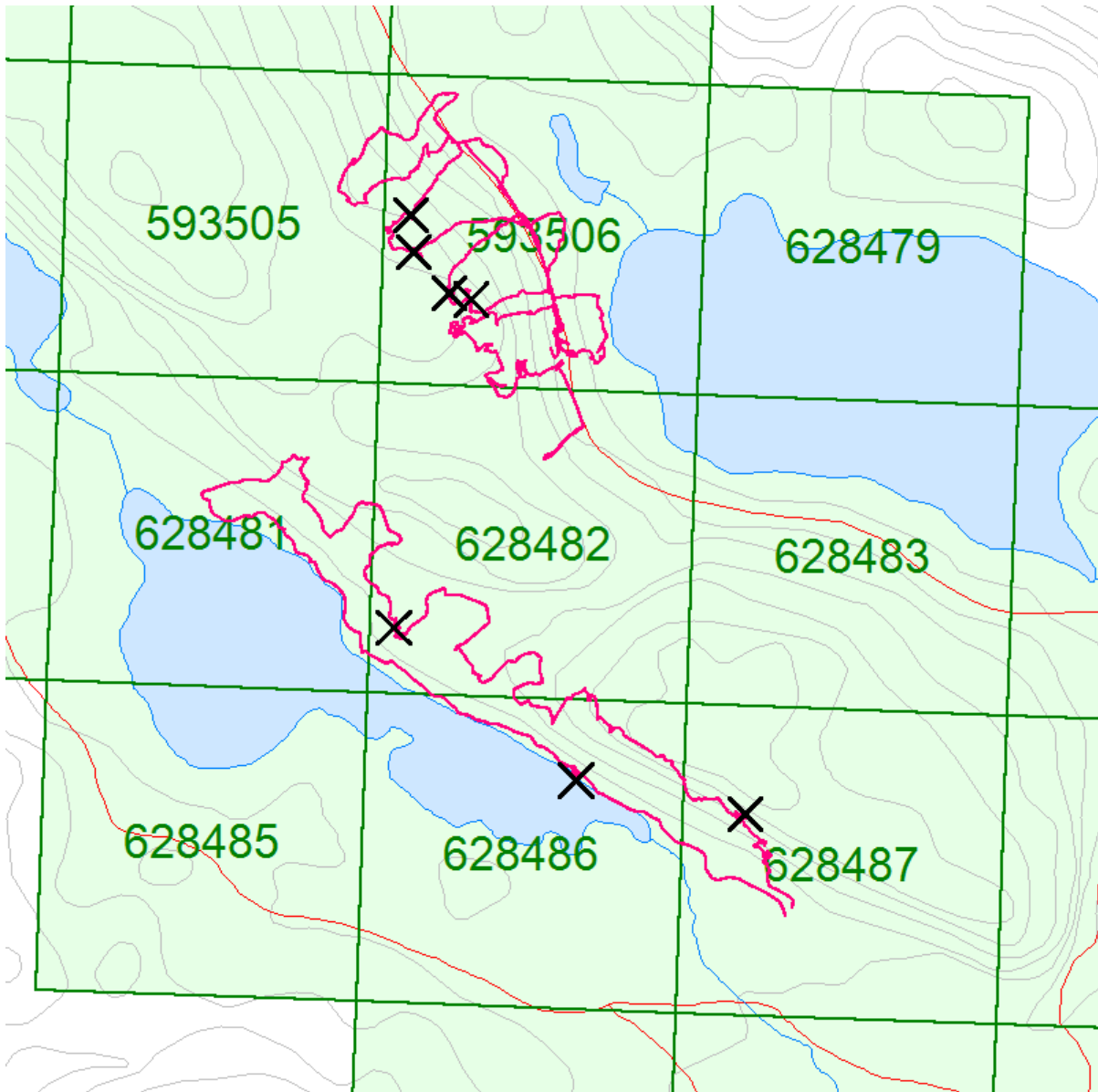
Significant sites observed throughout the traverse were noted by the prospecting crew, and their locations were recorded.

Feature	Easting	Northing
Trench	280024	5155985
Trench	280015	5155987

**Table 4: Features Located**



**3.2 DAY 1 – MAY 17TH, 2022**



**Figure 3: Traverse conducted on May 17th, 2022**

---

Sample 1003

Rock Description:

- Coarse-grained magnetic meta gabbro

Location:

281046E

5155544N



**Figure 4: Cross-section of Sample 1003**

---

Sample 1004

Rock Description:

- Pyroxene gabbro

Location:  
281013E  
515553N



**Figure 5: Cross Section of Sample 1004**

---

Sample 1005

Rock Description:

- Medium to coarse-grained gabbro

Location:  
280960E  
5155615N



**Figure 6: Cross Section of Sample 1005**



---

Sample 1006

Rock Description:

- Pyroxene gabbro

Location:  
280956E  
5155670N



**Figure 7: Cross Section of Sample 1006**

---

Sample 1101

Rock Description:

- Coarse-grained gabbro

Location:  
281457E  
5154773N



**Figure 8: Cross Section of Sample 1101**

---

Sample 1102

Rock Description:

- Coarse-grained gabbro with pyroxene groundmass

Location:  
280930E  
5155052N



**Figure 9: Cross Section of Sample 1102**



---

Sample 1103

Rock Description:

- Sericite altered gabbro with quartz veining (2-5 cm)

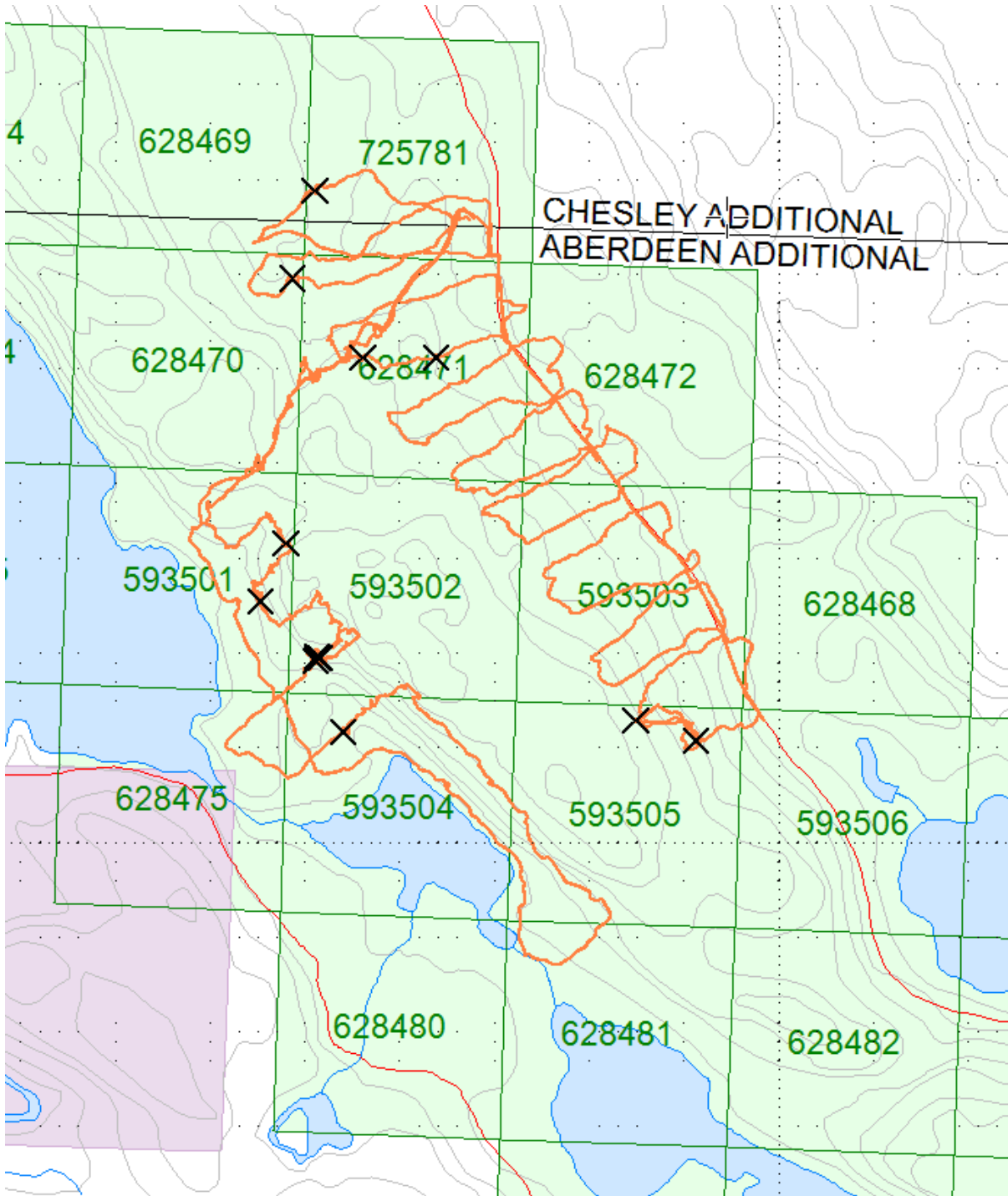
Location:  
721385E  
4991385N



**Figure 10: Cross Section of Sample 1103**



**3.3 DAY 2 – MAY 18TH, 2022**



***Figure 11: Location of traverse on May 18th, 2022***

**Figure 11: Traverse conducted on May 18th, 2022**



**Figure 12: Previous Trench work located**





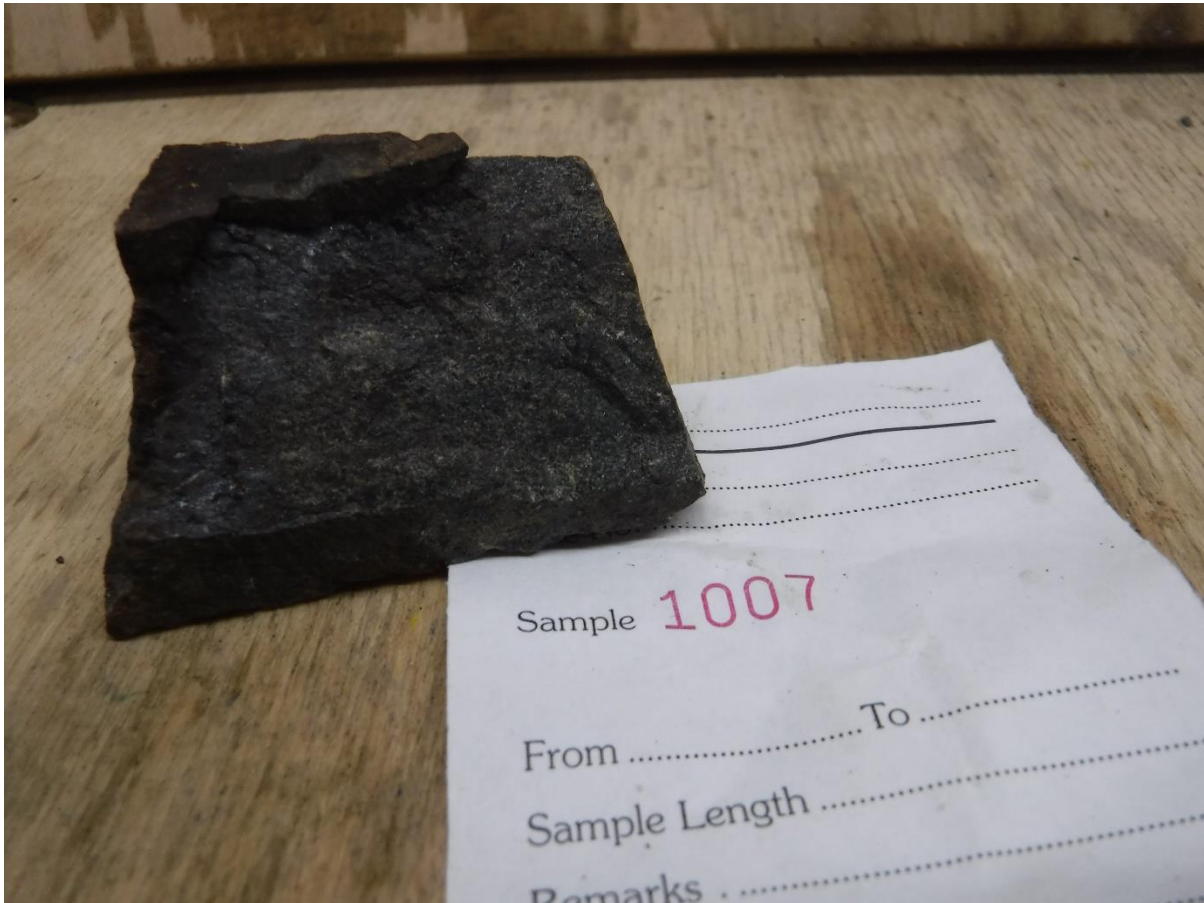
**Figure 13: Previous Trench work located**

Sample 1007

Rock Description:

- Medium-grained gabbro with minor sericite alteration

Location:  
280823E  
5155816N



**Figure 14: Cross Section of Sample 1007**



---

Sample 1008

Rock Description:

- Coarse-grained meta-gabbro

Location:  
280697E  
5155858N



**Figure 15: Cross Section of Sample 1008**

---

Sample 1009

Rock Description:

- Quartzite

Location:  
280276E  
5156624N



**Figure 16: Cross Section of Sample 1009**

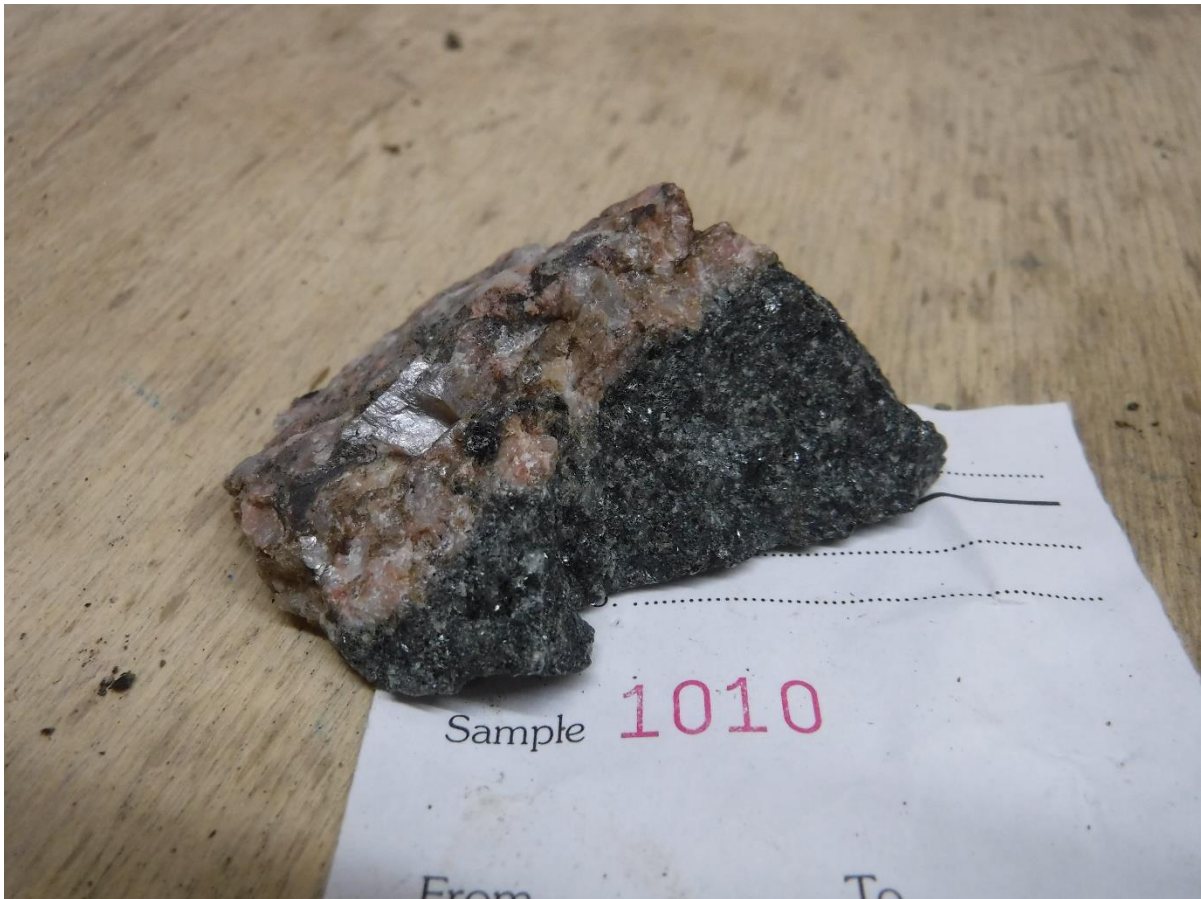
---

Sample 1010

Rock Description:

- Coarse-grained anorthosite contact with pyroxene gabbro

Location:  
280121E  
5156624N



**Figure 17: Cross Section of Sample 1010**



---

Sample 1011

Rock Description:

- Quartzite

Location:  
279971E  
5156792N



**Figure 18: Cross Section of Sample 1011**



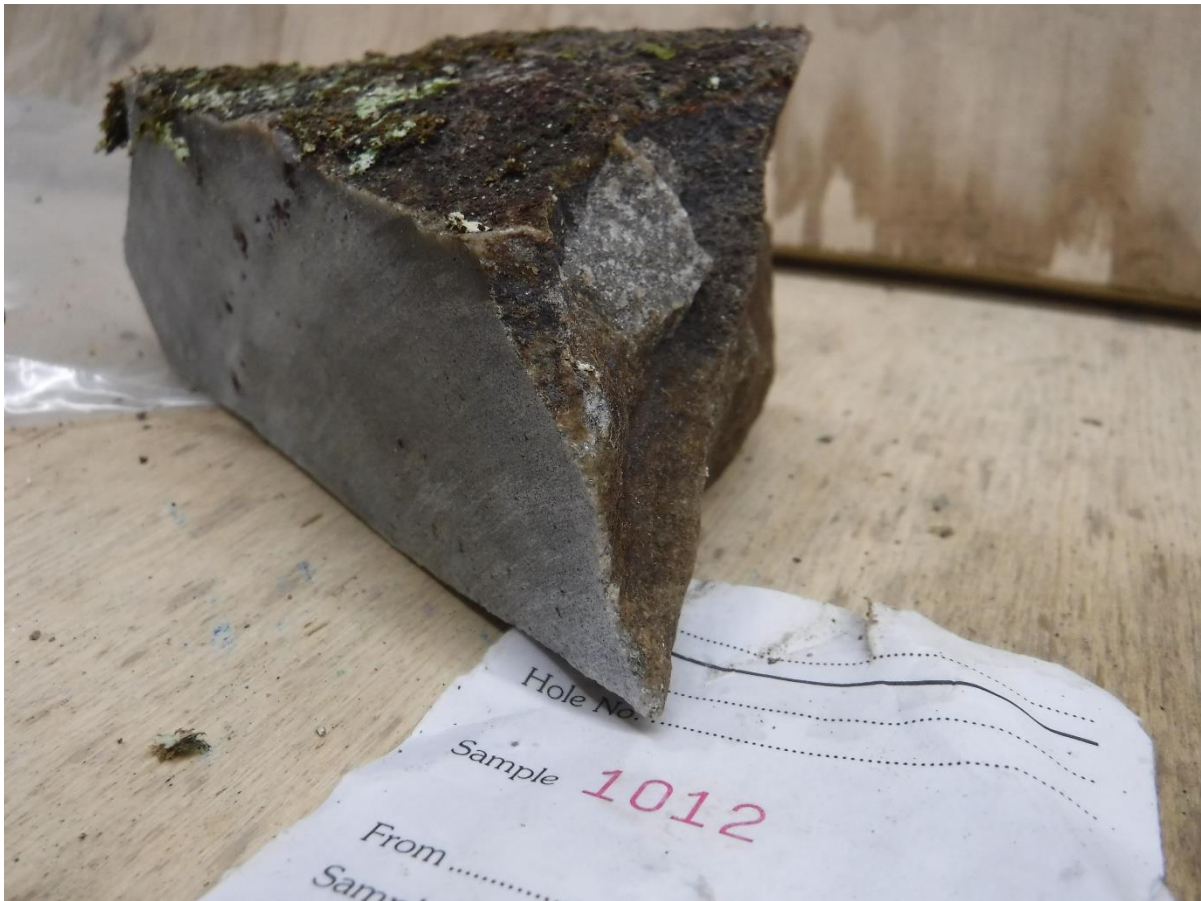
---

Sample 1012

Rock Description:

- Quartzite

Location:  
280019E  
5156978N



**Figure 19: Cross Section of Sample 1012**

---

Sample 1104

Rock Description:

- Coarse-grained meta gabbro

Location:  
279958E  
5156233N



**Figure 20: Cross Section of Sample 1104**

---

Sample 1105

Rock Description:

- Coarse-grained sericite altered meta gabbro with altered quartz veining

Location:  
279905E  
5156110N



**Figure 21: Cross Section of Sample 1105**



---

Sample 1106

Rock Description:

- Coarse-grained meta-diorite with disseminated sulphides

Location:  
280031E  
5155991N



**Figure 22: Cross Section of Sample 1106**

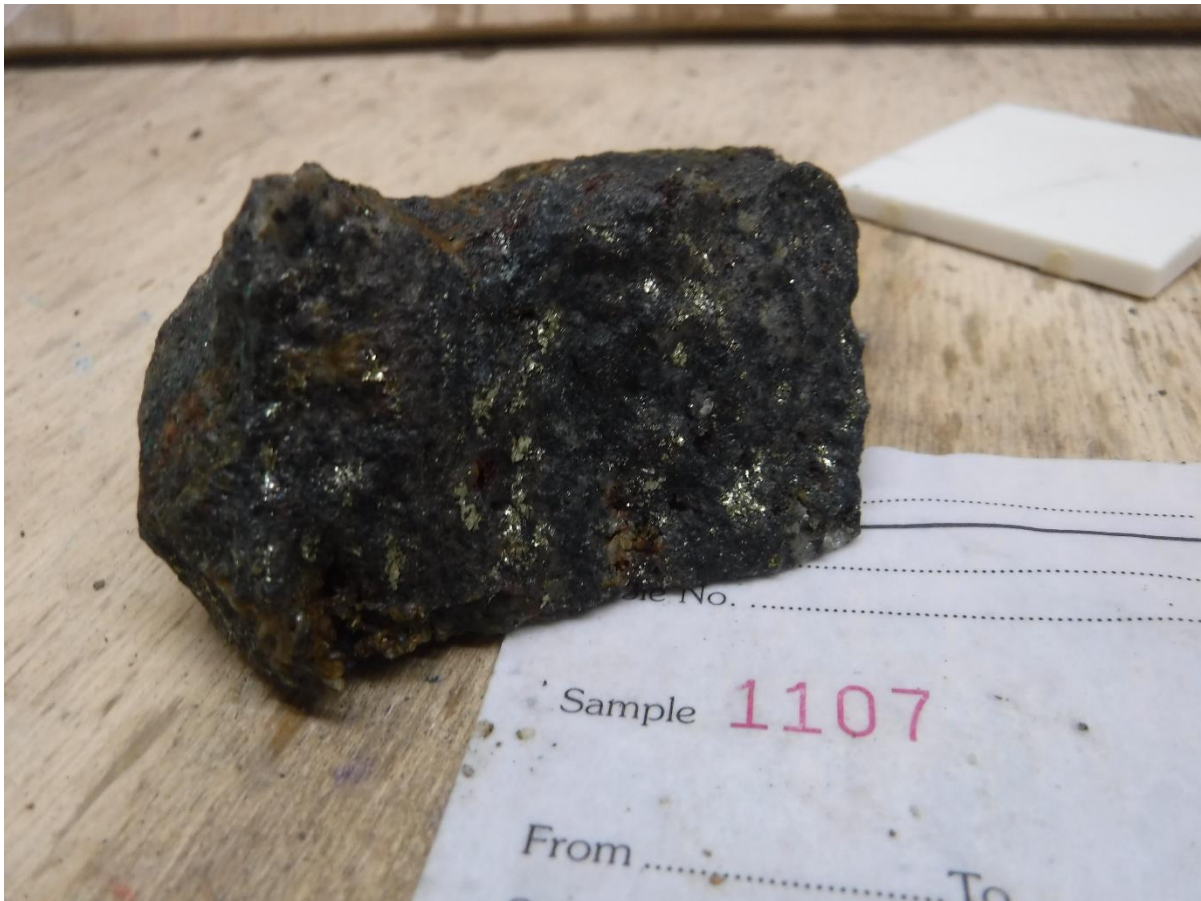
---

Sample 1107

Rock Description:

- Coarse-grained vesicular meta diabase with sulphides

Location:  
280024E  
5155993N



**Figure 23: Cross Section of Sample 1107**

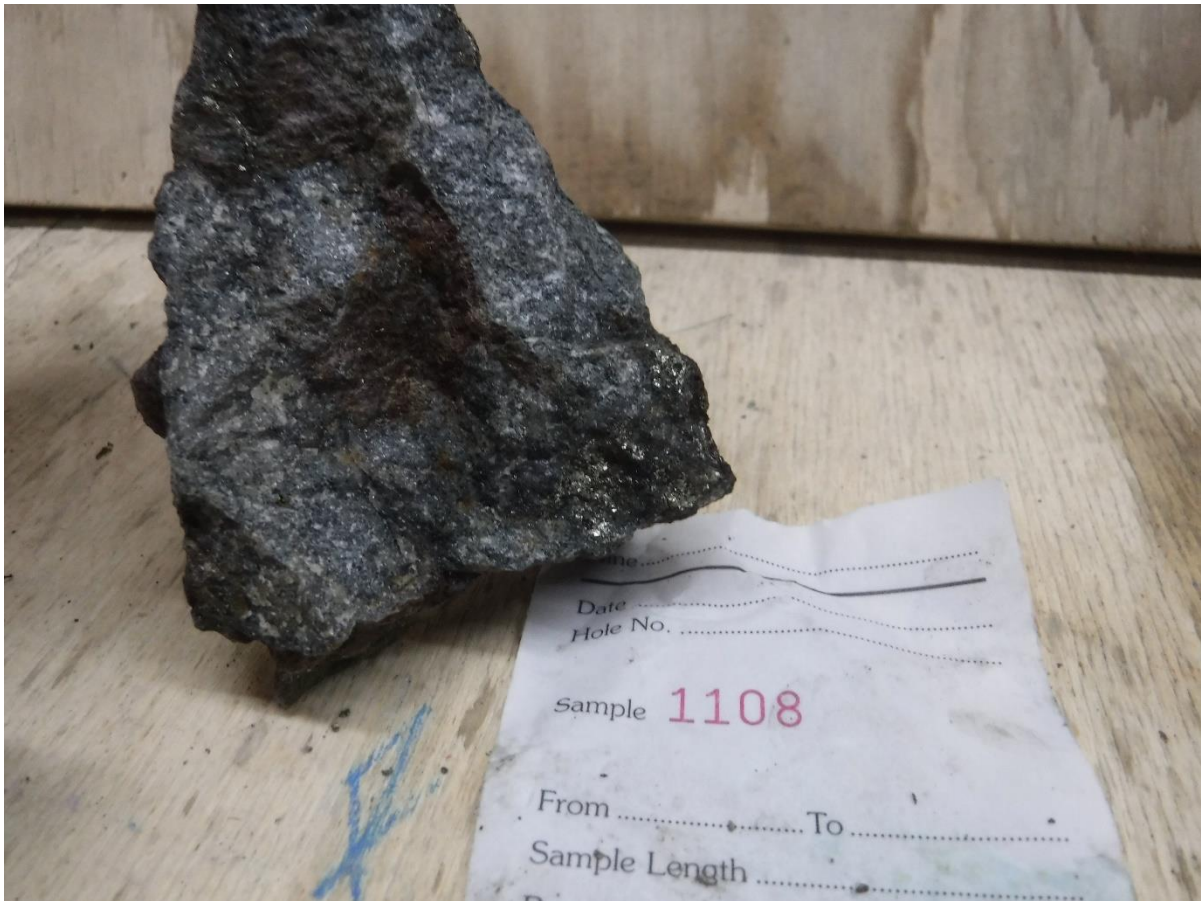
---

Sample 1108

Rock Description:

- Coarse-grained gabbro with disseminated sulphides

Location:  
280022E  
5155984N



**Figure 24: Cross Section of Sample 1108**



---

Sample 1109

Rock Description:

- Coarse-grained vesicular meta gabbro with disseminated sulphides

Location:  
280026E  
5155990N



**Figure 25: Cross Section of Sample 1109**

---

Sample 1110

Rock Description:

- Fine-medium grained weakly magnetic meta gabbro

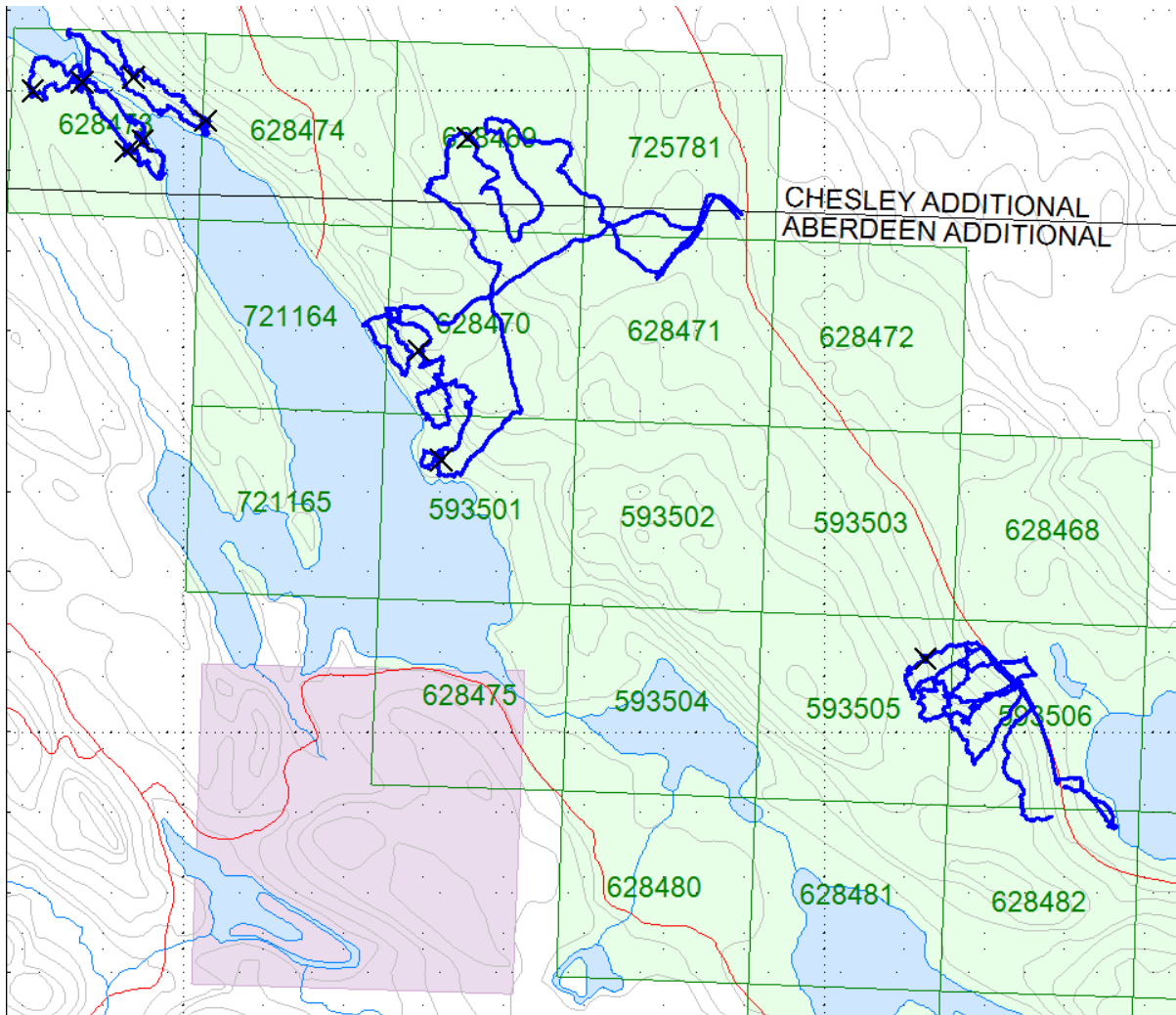
Location:  
280079E  
5155835N



**Figure 26: Cross Section of Sample 1110**



**3.4 DAY 3 – MAY 19TH, 2022**



**Figure 27: Traverse conducted on May 19th, 2022**

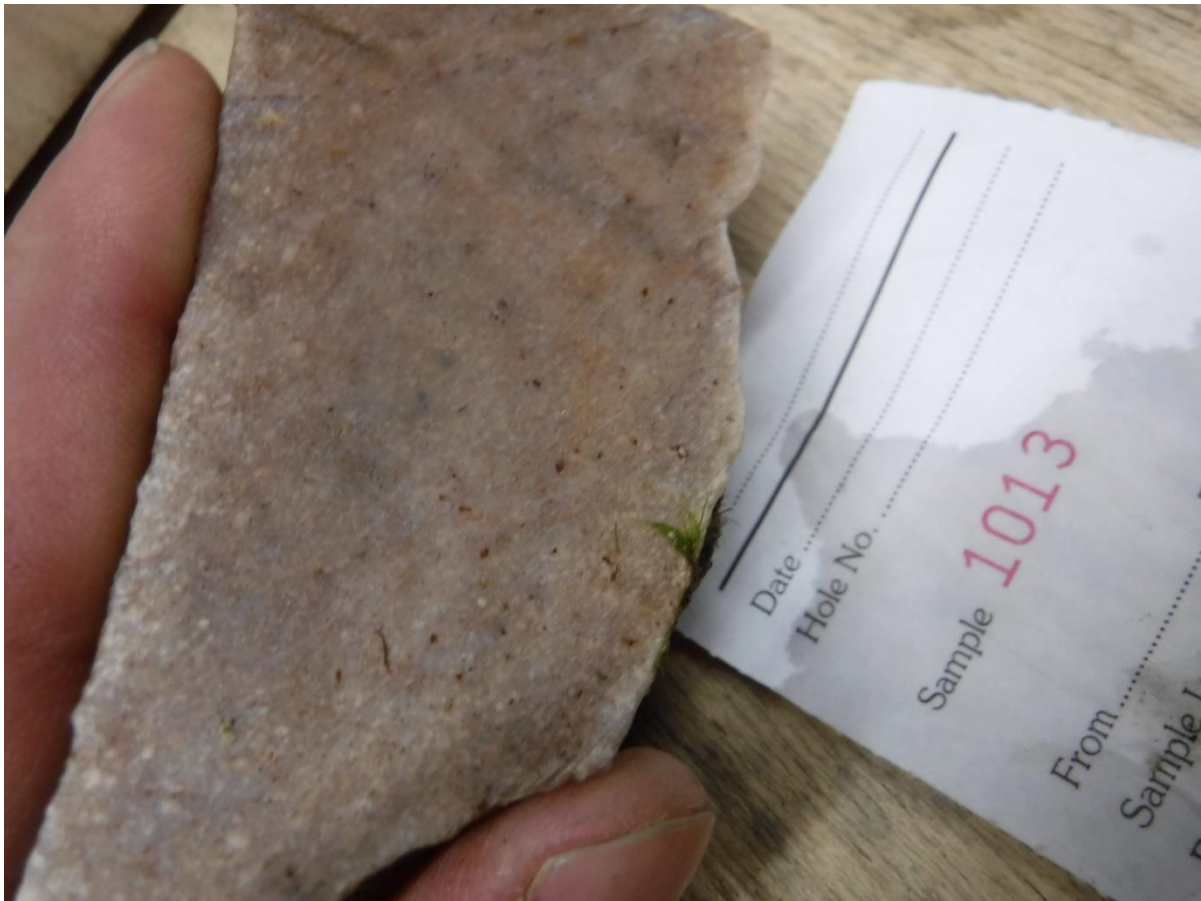
---

Sample 1013

Rock Description:

- Quartzite

Location:  
279708E  
5157083N



**Figure 28: Cross Section of Sample 1013**

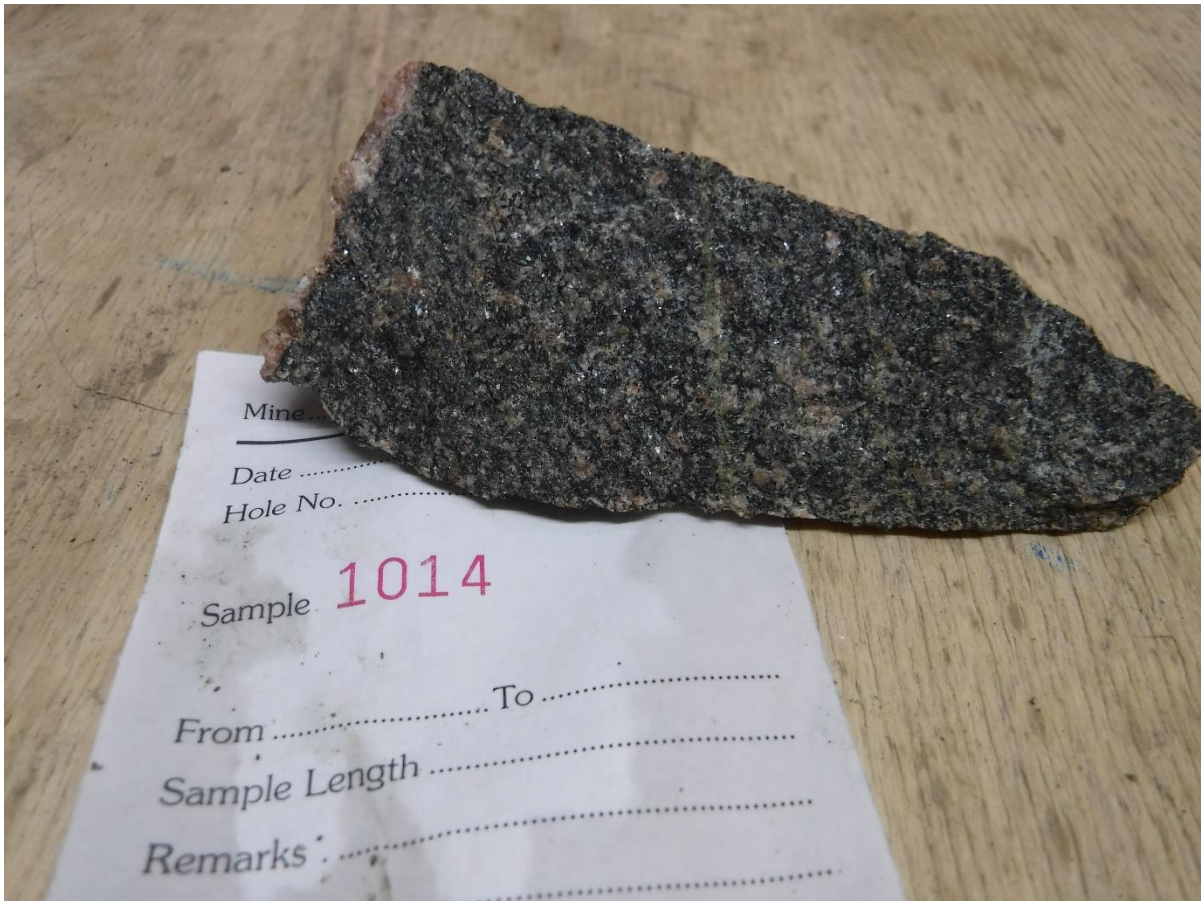
---

Sample 1014

Rock Description:

- Coarse-grained gabbro

Location:  
279643E  
5156279N



**Figure 29: Cross Section of Sample 1014**

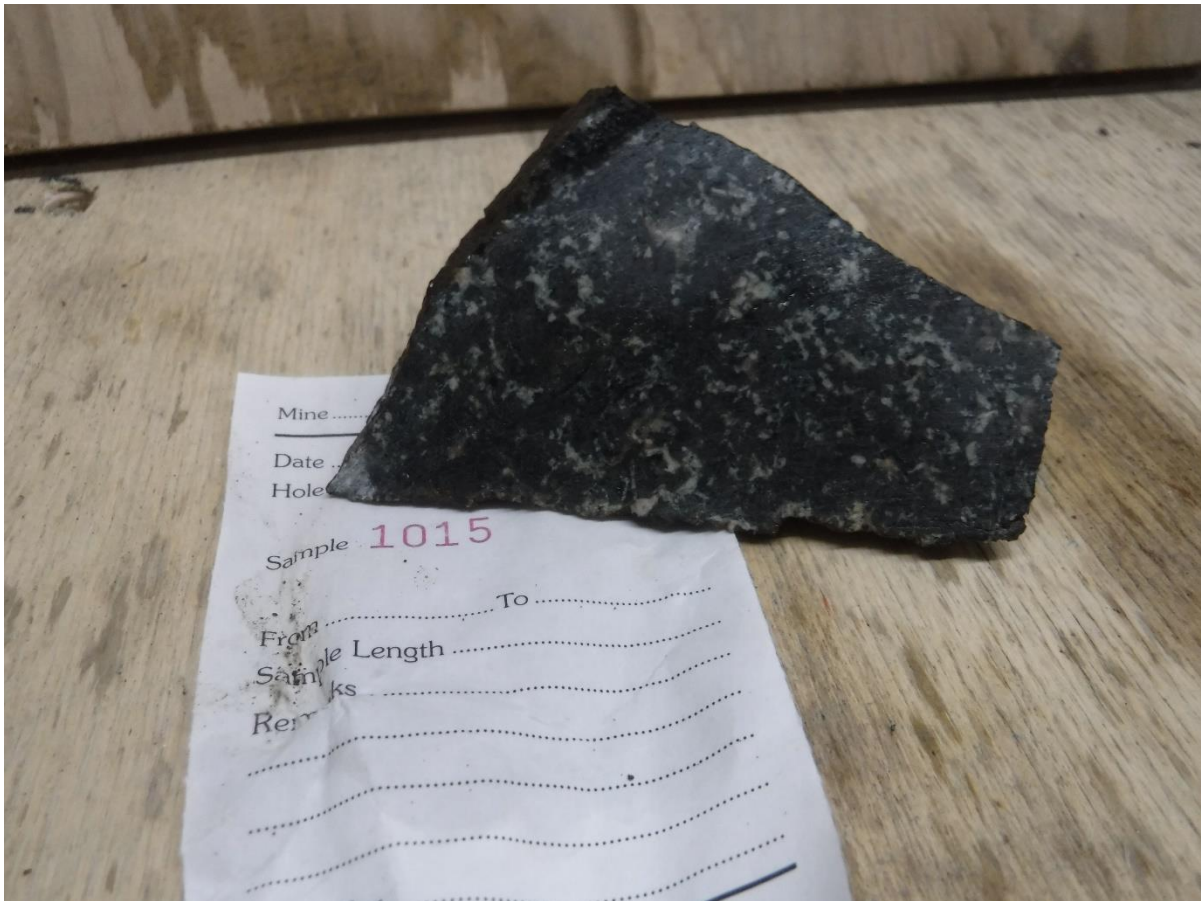
---

Sample 1015

Rock Description:

- Medium to coarse-grained weakly magnetic meta gabbro

Location:  
279587E  
5156553N



**Figure 30: Cross Section of Sample 1015**



---

Sample 1111

Rock Description:

- Medium-grained gabbro with quartz phenocryst and disseminated sulphides

Location:  
278747E  
5157221N



**Figure 31: Cross Section of Sample 1111**

---

Sample 1112

Rock Description:

- Fine-grained volcanic with contact to a coarse-grained meta-gabbro
- Disseminated sulphides and minor chlorite/sericite alteration

Location:  
278623E  
5157200N



**Figure 32: Cross Section of Sample 1112**

---

Sample 1113

Rock Description:

- Subarkosic quartzite

Location:  
278897E  
5157075N



**Figure 33: Cross Section of Sample 1113**

---

Sample 1114

Rock Description:

- Fine-grained volcanic, from Nipissing diabase

Location:  
278857E  
5157079N



**Figure 34: Cross Section of Sample 1114**



---

Sample 1115

Rock Description:

- Coarse-grained meta gabbro with minor sericite alteration of plagioclase

Location:  
279055E  
5157126N



**Figure 35: Cross Section of Sample 1115**

---

Sample 1116

Rock Description:

- Coarse-grained pyroxene gabbro with trace sulphides

Location:  
278875E  
5157234N



**Figure 36: Cross Section of Sample 1116**

---

Sample 1201

Rock Description:

- Coarse-grained meta-gabbro with minor sericite alteration and disseminated sulphides.

Location:  
280851E  
5155784N



**Figure 37: Cross Section of Sample 1201**



---

## APPENDIX A

### STATEMENT OF QUALIFICATIONS

I, C. Jason Ploeger, hereby declare that:

1. I am a professional geophysicist with residence in Larder Lake, Ontario and am presently employed as a Geophysicist and Geophysical Manager of Canadian Exploration Services Ltd. of Larder Lake, Ontario.
2. I am a Practising Member of the Association of Professional Geoscientists, with membership number 2172.
3. I graduated with a Bachelor of Science degree in geophysics from the University of Western Ontario, in London, Ontario, in 1999.
4. I have practiced my profession continuously since graduation in Africa, Bulgaria, Canada, Mexico and Mongolia.
5. I am a member of the Ontario Prospectors Association, a Director of the Northern Prospectors Association and a member of the Society of Exploration Geophysicists.
6. I do not have nor expect interest in the properties and securities of Skead Holdings Ltd.
7. I am responsible for the final processing and validation of the survey results and the compilation of the presentation of this report. The statements made in this report represent my professional opinion based on my consideration of the information available to me at the time of writing this report.



C. Jason Ploeger, P.Geo., B.Sc.  
Geophysical Manager  
Canadian Exploration Services Ltd.

Larder Lake, ON  
July 5<sup>th</sup>, 2022



---

## APPENDIX A

### STATEMENT OF QUALIFICATIONS

I, Macpherson Williams, hereby declare that:

1. I am a Junior geological & geophysical technician with Canadian Exploration Services Ltd. of Larder Lake, Ontario.
2. I am currently in my 4<sup>th</sup> year of a Bachelor of Science degree majoring in Earth Sciences from Carleton University in Ottawa, Ontario.
3. I have previous geological work experience during my education.
4. I do not have nor expect interest in the properties and securities of Skead Holdings Ltd.
5. I am responsible for the final processing and validation of the survey results and the compilation of the presentation of this report. The statements made in this report represent my professional opinion based on my consideration of the information available to me at the time of writing this report.

Macpherson Williams  
Junior Geological & Geophysical Technician  
Canadian Exploration Services Ltd.

Larder Lake, ON  
July 5<sup>th</sup>, 2022

## APPENDIX B

### GARMIN GPS MAP 62S



<b>Physical &amp; Performance:</b>	
Unit dimensions, WxHxD:	2.4" x 6.3" x 1.4" (6.1 x 16.0 x 3.6 cm)
Display size, WxH:	1.43" x 2.15" (3.6 x 5.5 cm); 2.6" diag (6.6 cm)
Display resolution, WxH:	160 x 240 pixels
Display type:	transflective, 65-K color TFT
Weight:	9.2 oz (260.1 g) with batteries
Battery:	2 AA batteries (not included); NiMH or Lithium recommended
Battery life:	20 hours
Waterproof:	yes (IPX7)
Floats:	no
High-sensitivity receiver:	yes
Interface:	high-speed USB and NMEA 0183 compatible
<b>Maps &amp; Memory:</b>	
Basemap:	yes
Preloaded maps:	no
Ability to add maps:	yes
Built-in memory:	1.7 GB
Accepts data cards:	microSD™ card (not included)

Waypoints/favorites/locations:	2000
Routes:	200
Track log:	10,000 points, 200 saved tracks
<b>Features &amp; Benefits:</b>	
Automatic routing (turn by turn routing on roads):	yes (with optional mapping for detailed roads)
Electronic compass:	yes (tilt-compensated, 3-axis)
Touchscreen:	no
Barometric altimeter:	yes
Camera:	no
<u>Geocaching-friendly:</u>	yes (paperless)
<u>Custom maps compatible:</u>	yes
Photo navigation (navigate to geotagged photos):	yes
Outdoor GPS games:	no
Hunt/fish calendar:	yes
Sun and moon information:	yes
Tide tables:	yes
Area calculation:	yes
Custom POIs (ability to add additional points of interest):	yes
Unit-to-unit transfer (shares data wirelessly with similar units):	yes
Picture viewer:	yes
Garmin Connect™ compatible (online community where you analyze, categorize and share data):	yes

- *Specifications obtained from [www.garmin.com](http://www.garmin.com)*

---

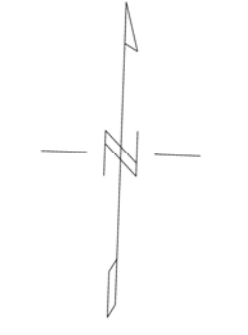
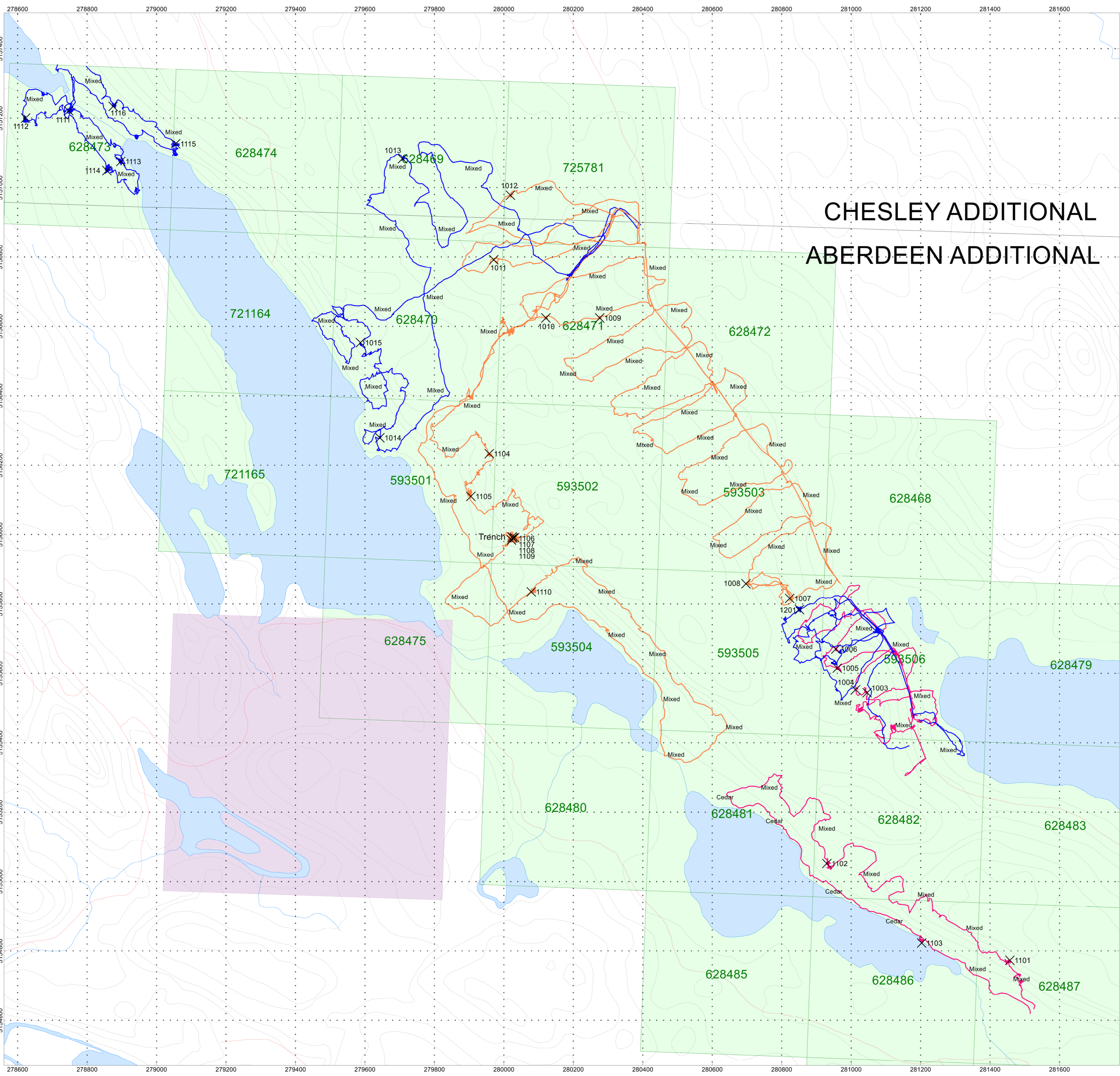
**APPENDIX C**

**LIST OF MAPS (IN MAP POCKET)**

1) Q3015-Skead-Aberdeen-Prospecting (1:5000)

**Total Maps = 1**





# CHESLEY ADDITIONAL ABERDEEN ADDITIONAL

- May 17, 2022
- May 18, 2022
- May 19, 2022


**SKEAD HOLDINGS LTD.**

**ABERDEEN PROPERTY**  
Aberdeen Additional and  
Chesley Additional, Ontario

Prospecting Traverses

---

Traverses By: Bruce Lavalley and  
Michael Sheldon  
Processed by: C Jason Ploeger, P.Geo.  
Map Drawn By: C Jason Ploeger, P.Geo.  
June 2022



Drawing: Q3015-Skead-Aberdeen-Prospecting

