

We are committed to providing [accessible customer service](#).

If you need accessible formats or communications supports, please [contact us](#).

Nous tenons à améliorer [l'accessibilité des services à la clientèle](#).

Si vous avez besoin de formats accessibles ou d'aide à la communication, veuillez [nous contacter](#).

(Revised Report of Work Submission)

Feildwork on Claim #294454

Tudhope TWP.

**Larder Lake Mining Division
Ontario, Canada**

Prepared by: Fred Pritchard

December 20, 2022

Fieldwork on claim #294454 Tudhope Twp.

Day 1 - June 3

Used a compass and GPS-NAD 83 to walk the perimeter of the claim and clear lines from over growth.

Checked for previous line cuts and that markers were present.

We Entered along the claim line off of HWY 65 W and Started at post #3 walked North to post#4 then headed East to post#1 claim line then headed South to Post #2.

Located old trenches stripped ends to examine and sample.

Day 2 - June 25

Brought in hand held metal detector to old trench pit, marsh area, and Wabun Creek to look for metallic minerals. we spent the day checking the 3 areas.

Day 3 - July 9

Brought panning trays and shovels in to further explore the areas that were previously looked at with the metal detector. (marsh area, and wabun creek. Started at the Wabun creek spent several hours with the metal detector, digging, looking for samples, and some panning. We spent very little time at the marsh area, only taking a few samples to look at later.

Day 4 - July 30

We went to the old trench pit where we spent the day using the metal detector and shovels to look for minerals. Ground was not disturbed except when a target was found. Minerals have not been confirmed yet except for Nicklein and Arckian with Quartz, and the only other things found were old pieces of rusted metal mining tool remnance.

No lines were cut, routes were done using a compass, GPS and metal detector.

Suspected Minerals/samples taken

Wabun Creek- clay, so far dissapointing

Marsh- possible kimberlite

Old pit/trench-Arckian Rock with lots of Quartz

GPS Co-ordinates used in co-ordinance with

Ontario Geological survey map 81 871

Airborne magnetic survey (Round Lake Batholith Area) NTS References: 41 P/9,16

Post 1 (557230E At the / 528420N)

Post 2 (557230E / 528020N)

Post 3 (556830E / 528020N)

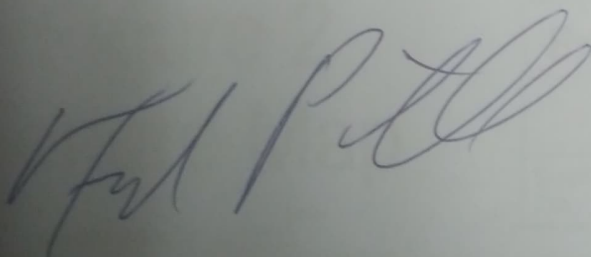
Post 4 (556830E / 528420N)

Old trench/pit (557310W / 5260130N)

Marsh area (557000W / 5280000N)

Wabun Creek(556890W / 5280400N)

Fred Pritchard



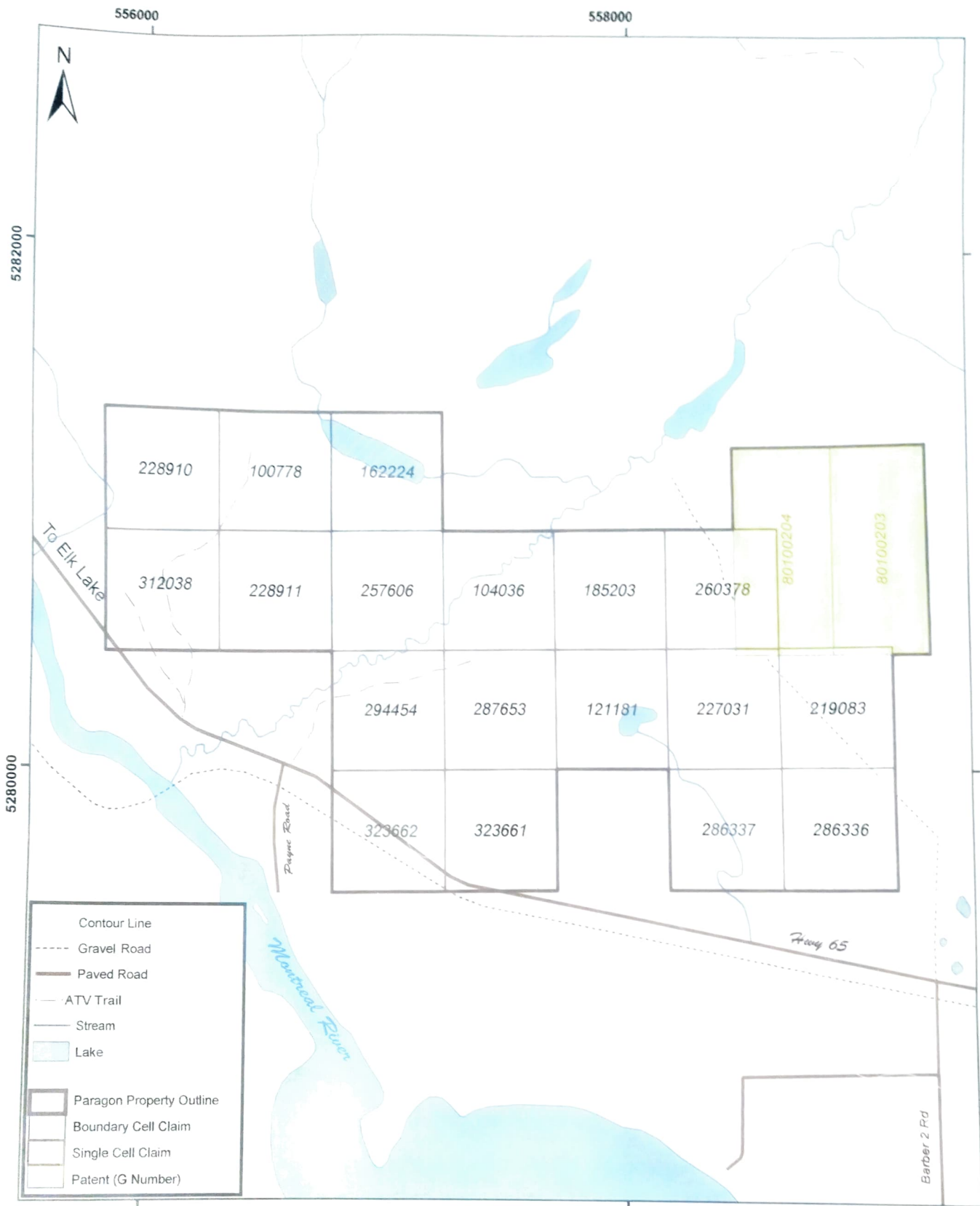


Figure 2 Tenure Map

Explorex Resources Inc.

Paragon-Hitchcock Property
Larder Lake Mining Division

Drawn By:
JWL

Scale:
1:5,000,000

Date: Dec 18, 2018
UTM NAD83 Zone 17

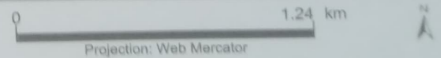


172156 41P09K297	41P09K298	41P09K299	41P09K300	41P09J281	288992 41P09J282	241895 41P09J283	241894 41P09J284	241893 41P09J285	41P09J286	41P09J287
324140 41P09K317	312707 41P09K318	41P09K319	41P09K320	41P09J301	119578 41P09J302	289013 41P09J303	229745 41P09J304	162992 41P09J305	41P09J306	41P09J307
287594 41P09K337	158206 41P09K338	41P09K339	734835 41P09K340	734836 41P09J321	229746 41P09J322	325049 41P09J323	162993 41P09J324	128467 41P09J325	41P09J326	41P09J327
TUDHOPE 275487 41P09K357	41P09K358 100745 158207	41P09K359	734834 41P09K360	41P09J341	228911 41P09J342	257606 41P09J343	296356 41P09J344	185203 41P09J345	260378 41P09J346	41P09J347
275488 41P09K377	41P09K378 278140 257572	312006 41P09K379	228863 41P09K380	41P09J361	294454 41P09J362	287653 41P09J363	121181 41P09J364	227031 41P09J365	219083 41P09J366	41P09J367
117270 41P09K397 41P09K398	272490 279657	135968 114908	291844 257573	126355 291843	41P09J382 323662	41P09J383 323661	41P09J384	41P09J385 286337	41P09J386 286336	41P09J387
121952 41P09F017	41P09F018 121951 151870	254627 41P09F019	41P09F020	41P09G001	41P09G002	41P09G003	41P09G004	41P09G005	41P09G006	41P09G007
BARBER 104298 41P09F037	41P09F038 295523 252631	288278 41P09F039	144157 41P09F040	210160 41P09G021	324835 41P09G022	210159 41P09G023	210158 41P09G024	41P09G025	41P09G026	41P09G027
271231 41P09F057	186386 114983	126981 41P09F059	228983 41P09F060	295524 41P09G041	276165 41P09G042	162286 41P09G043	276164 41P09G044	41P09G045	41P09G046	41P09G047

Legend

- Provincial Grid Cell**
 - Available
 - Pending
 - Unavailable
- Mining Claim**
 - Mining Claim
 - Boundary Claim
- Alienation**
 - Withdrawal
 - Notice
- NDM Administrative Boundaries**
 - NDM Townships and Areas
 - Geographic Lot Fabric
 - UTM Grid 1K
 - UTM Grid 10K
- Mining Division**
 - Mineral Exploration and Development Region
 - CLUPA Protected Area - Far North
 - Resident Geologist District
- Federal Land Other**
 - Native Reserves
 - AMIS Sites
 - AMIS Features
 - Drill Hole
 - Mineral Occurrences
- MLAS Mining History**
 - Withdrawal - History
 - Notice - History
 - Mining Claim - History
 - Mining Land Tenure - History
 - Legacy Claim
- Provincial Grid**
 - Provincial Grid 250K
 - Provincial Grid 50K
 - Provincial Grid Group
- Land Tenure**
 - Surface Rights
 - Mining Rights
 - Mining and Surface Rights
 - Order-in-Council

Those wishing to register mining claims should consult with the Provincial Mining Recorders' Office of the Northern Development and Mines (NDM) for additional information on the status of the lands shown hereon. This map is not intended for navigational, survey, or land title determination purposes as the information shown on this map is compiled from various sources. Completeness and accuracy are not guaranteed. Additional information may also be obtained through the local Land Titles or Registry Office, or the Natural Resources and Forestry. The information shown is derived from digital data available in the Provincial Mining Recorders' Office at the time of downloading from the Northern Development and Mines (NDM) web site.



Imagery Copyright Notices: Ontario Ministry of Northern Development, Mines, Natural Resources and Forestry; NASA Landsat Program; First Base Solutions Inc.; Aero-Photo (1961) Inc.; DigitalGlobe Inc.; U.S. Geological Survey.
© Queen's Printer for Ontario, 2022





Muriel

Con 1

#257606

#164036

PARAGON
HITCHCOCK

LOIS
RAMP
WEST

LOTS
RAMP
EAST

Con 1

#228911

Wabun
Creek.

EPLET
NORTH WEST
LOT 9 NW $\frac{1}{2}$

EPLET
NORTH EAST

Con 1

#294454
#323662

#287653
#323661

EPLET
SOUTH WEST

EPLET
SOUTH EAST

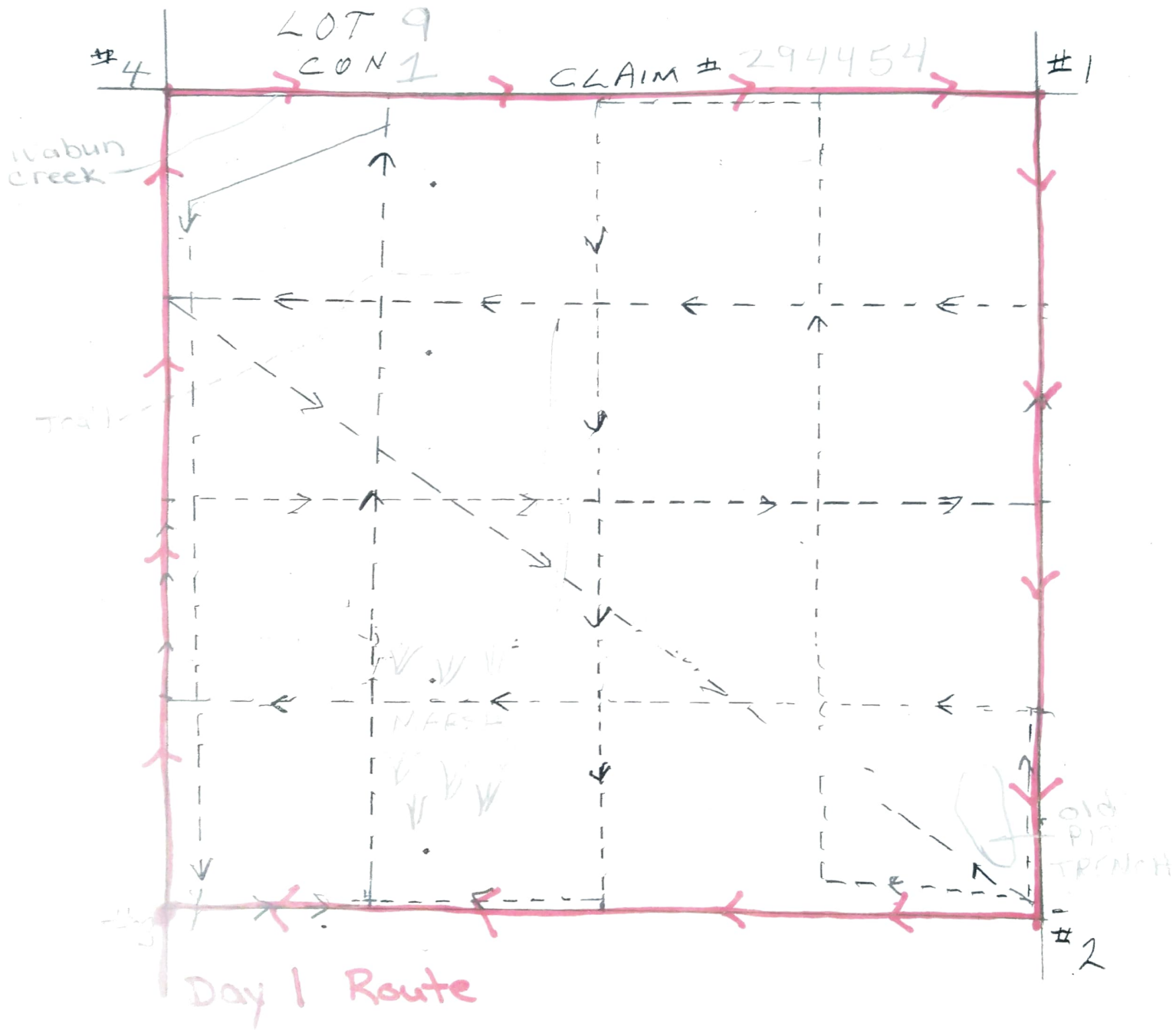
Con 1

Hwy 65 W

Old Rail Road

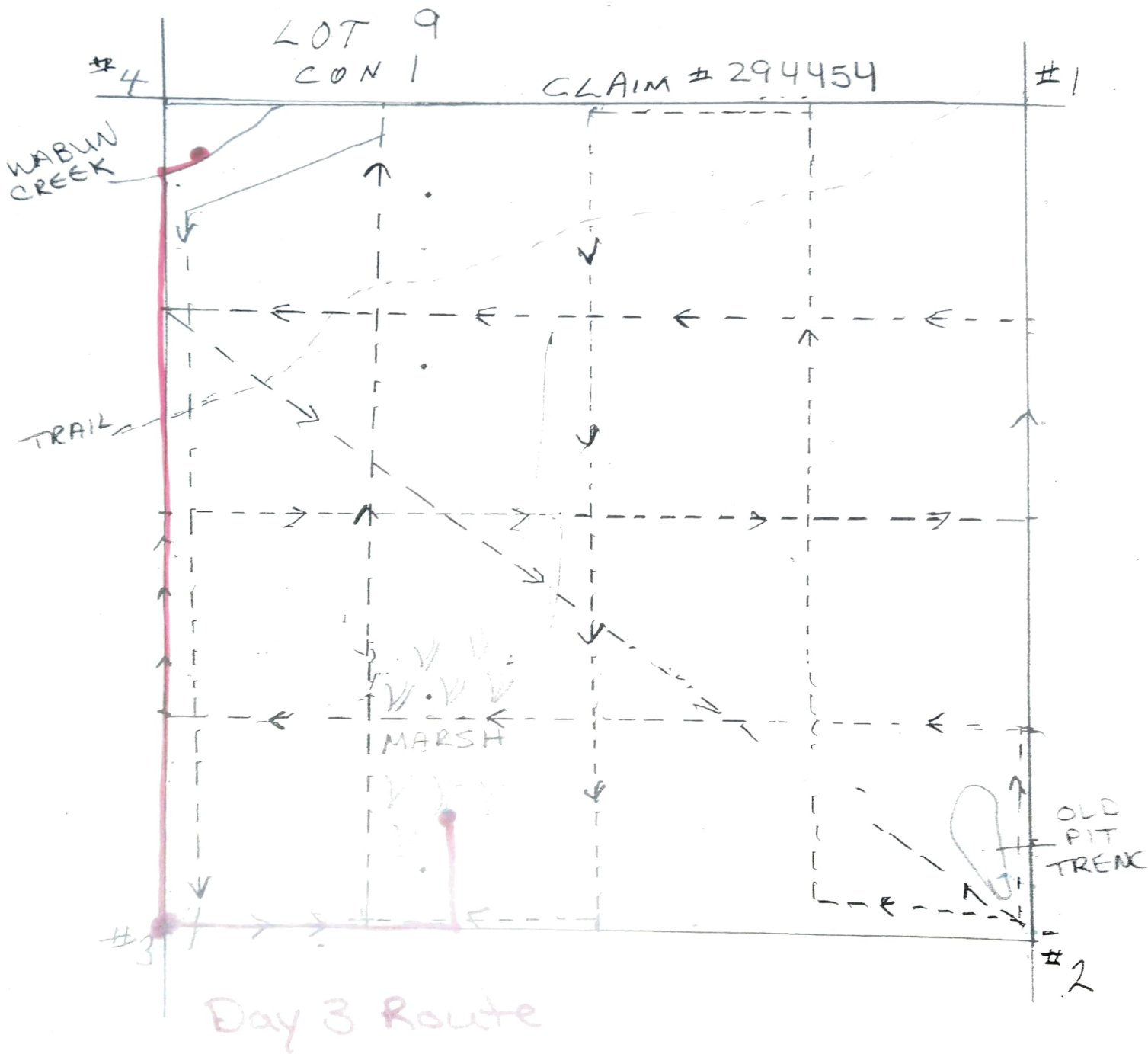
LOT 9

Eplet
North West
NW 1/4 of S 1/2



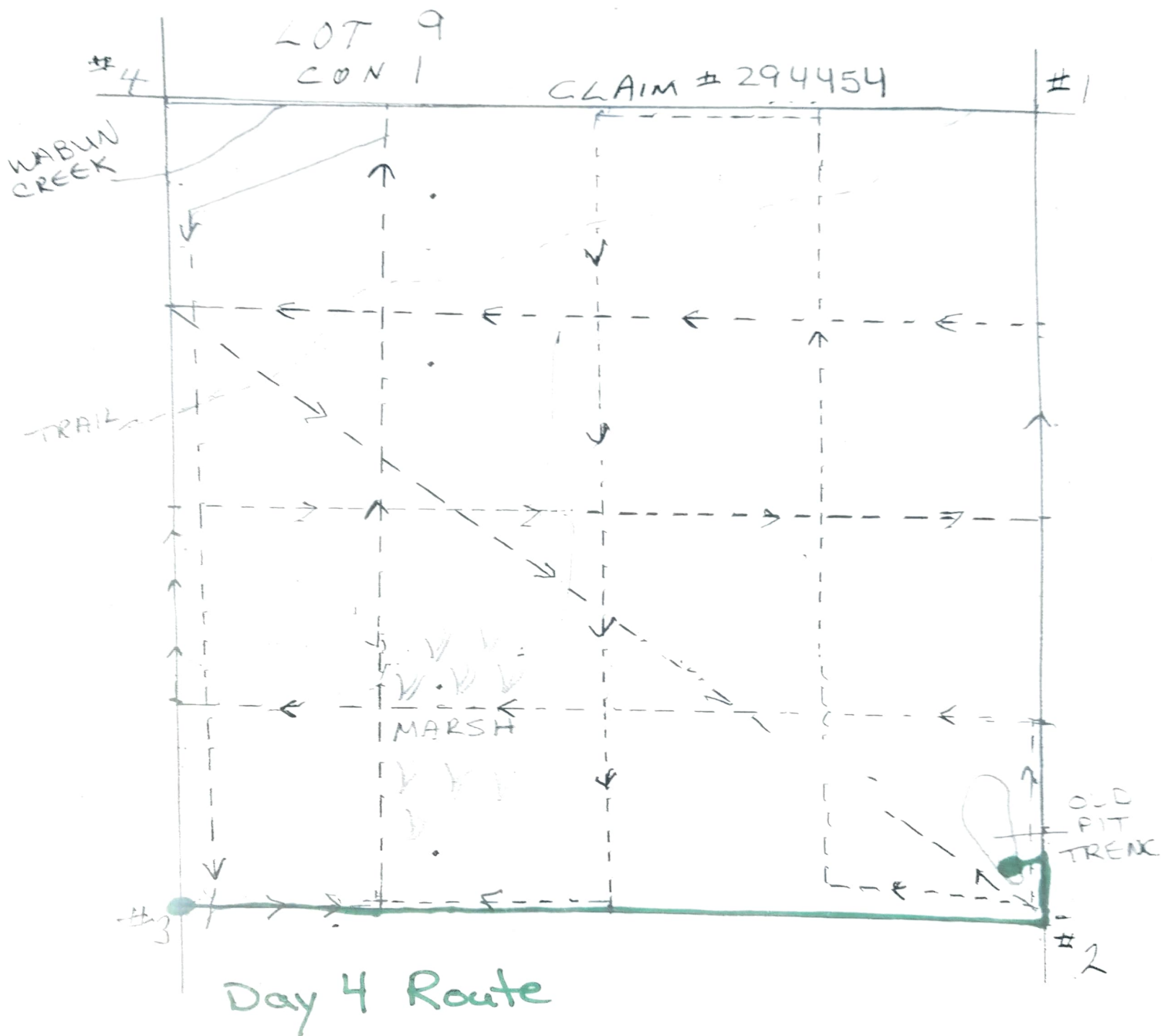
SCALE 1 1/2 IN. = 100 M

Eplet.
North West
NW 1/4 of S 1/2



SCALE 1 1/2 IN. = 100 M

Eplet.
North West
NW 1/4 of S 1/2



SCALE 1 1/2 IN. = 100 M