

We are committed to providing [accessible customer service](#).

If you need accessible formats or communications supports, please [contact us](#).

Nous tenons à améliorer [l'accessibilité des services à la clientèle](#).

Si vous avez besoin de formats accessibles ou d'aide à la communication, veuillez [nous contacter](#).

LOUGHRIN AND HENRY TOWNSHIPS
BUILDING STONE PROJECT 2022

AUTHOR: JOHN BRADY
SEPTEMBER 12, 2022 REV. MARCH 10, 2023

1] INTRODUCTION

The purpose of the 2022 Building Stone Prospecting Project in Loughrin and Henry Townships was to obtain unfinished dimension stone samples from my old stone quarry site for viewing and possible testing. There has been a recent revival of industry interest in building stone for both dimension stone and niche market applications.

For example Derek Leung of the Harquill School of Mines, Laurentian University has recently expressed interest in competent stone for use as curling rocks. He attended with me to view some of my cut and polished stone samples from my Loughrin/Henry quarry site and asked me if I was able to obtain additional unfinished samples from the site for viewing and possible testing. In addition, Wahnapiatae First Nations and also local landscape contractors have expressed interest.

Work for this program was performed by John Brady [Prospector License C32203] with support by Marie Brady.

2] PROPERTY/LOCATION/ACCESS

The property consists of 4 single cell mining claims: 562967; 562968; 562969; 562970. The claims are contiguous and straddle the north-south Loughrin-Henry township boundary. The property is located adjacent to highway 535 and is located 17 KM north of Hagar Ontario which is 60 KM east of Sudbury, Ontario. A key map [map 1 -Regional Map] is attached.

3. PREVIOUS WORK

1993-1994 Stone quarry pre-development and large block extraction performed by J. Brady. An assessment report by Norwin Geological -Edward Sawitzky was filed with MNDM in 1994 and indicated – ‘significant economic potential ---’ for both the black and pink ‘granite’ deposits.

4. GEOLOGY

The property is located within the Grenville Province and is underlain by a massive pink granite body on the west side of Hwy 535. On the east side of the highway a 40 meter wide black diabase intrusive dyke underlies the deposit.

5. 2022 PROSPECTING PROGRAM

PROSPECTING WAS CARRIED OUT BY THE AUTHOR WITH ASSISTANCE from Marie Brady between April and June of 2022 on the mining claims.

The purpose of the 2022 program was to identify dimension stone areas suitable for obtaining rock samples, relocate and cleaning out old stone pits, restore access trails and collect samples.

Field work was carried out using picks, shovels, brooms, sledge hammers and chisels. Additional details related to the samples are shown on map 3 Prospecting Traverses to relocate old work sites, and map 4 to cut and flag trails and brushed out and cleaned work sites and collected samples. Also detailed in daily log [5.1] and sampling sections [5.2] contained in this report.

5.1 DAILY LOG

April 19, 20, 28, 2022-Map 3 -Prospecting Traverses – Traverse 1 -John & Marie Brady-old quarry work sites brushed and cleaned out sites C and D [map4] -both sites contain massive medium grained pink granite.

May 11, 16, 23, 30, June 5, 2022 -Map3 Traverse 2 -John & Marie Brady-Map 4 re opened trails and brushed and cleaned out 4 old quarry work sites brushed out and cleaned out sites A and B – fine grained black diabase and sites C and D -medium grained pink granite. Collected 40 KG of samples.

June 21, 22, 2022 Cleaned and sized samples and delivered ~12 KG to Sudbury Resident Geologist Shirley Peloquin for transfer to Derek Leung [Harquil School of Mines] for viewing and possible analysis/thin section. Remainder of samples stored at 1227 Holland Rd. for future industry evaluation.

5.2 SAMPLING

Six samples were collected from the project for review. Each sample was approximately 40 KG of material.

Table 1 -2022 rock samples description.

Sample 1 -old pit A—black fine grained diabase.

Sample 2 -from large block at B black fine grained diabase.

Samples 3 and 4 old pit at C – medium grained pink granite.

Samples 5 and 6 old pit at D – medium grained pink granite with narrow 5 mm pegmatite veins at ~20 cm intervals that give the stone an attractive marbled appearance.

COSTS

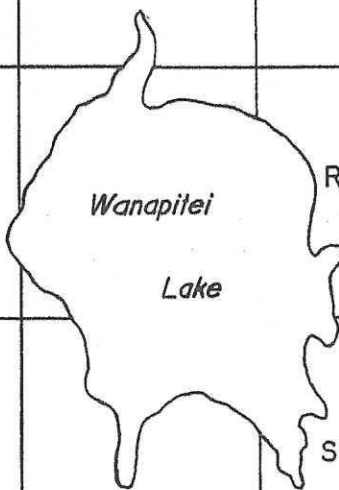

John Brady – 12 days @500. = 6,000.

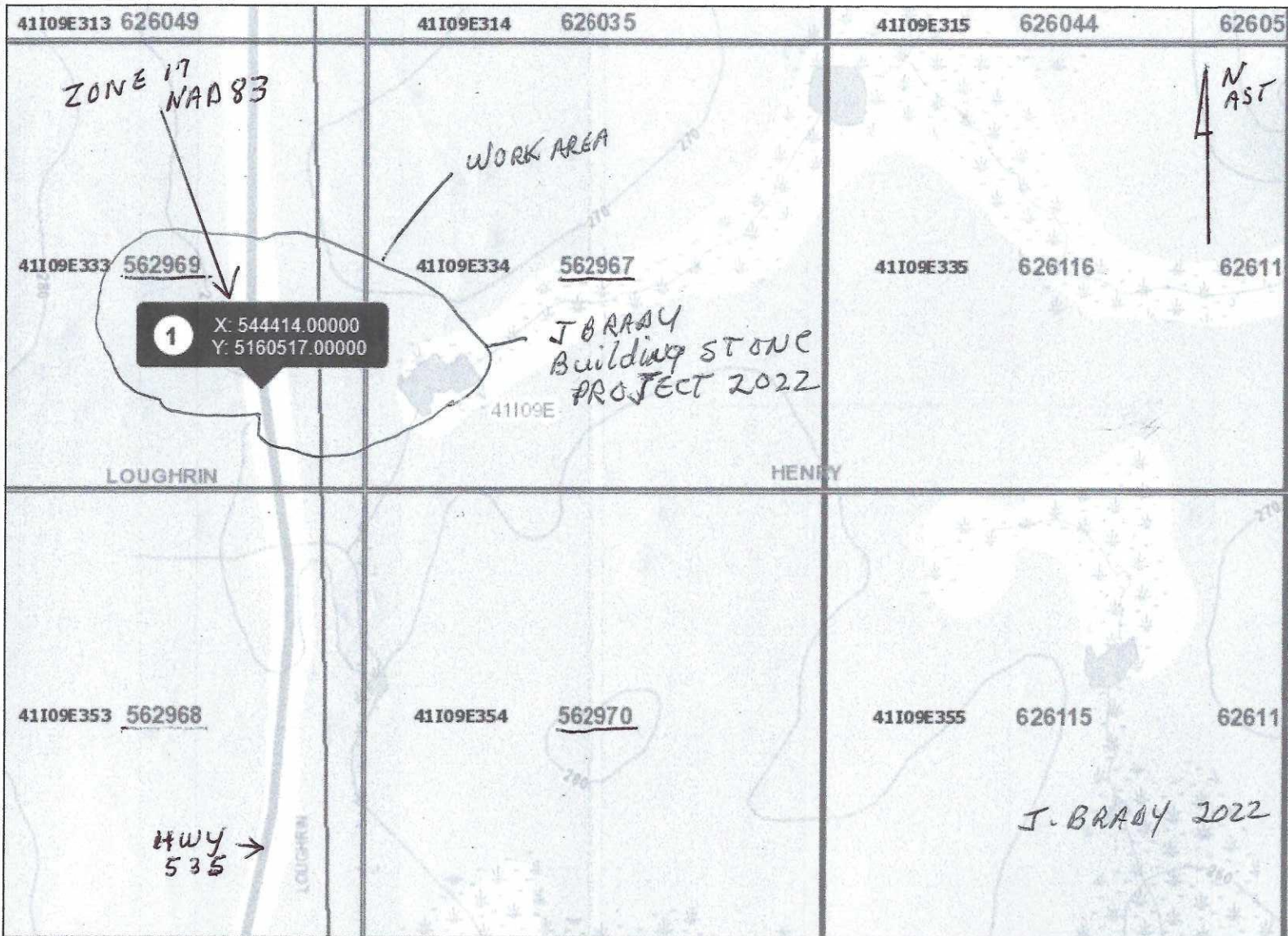
Marie Brady – 7 days @ 400. = 2,800

Travel – 8 trips to property at 154 KM return X 8 X .61/KM = 551

Total expenses = 8,800 + 551 = 9,351

Revised by John Brady March 10, 2022

		FRALECK			MAP 1 PROPERTY LOCATION		
Hess → OFFSET	HUTTON	PARKIN <i>PARKIN OFFSET</i>	AYLMER	MACKELCAN			↑ N
	WISNER	NORMAN	 Wanapitei Lake		RATHBUN	KELLY	
	HANMER	<i>Capreol</i> CAPREOL	MACLENNAN	SCADDING	DAVIS	JAMES	
	BLEZARD	GARSON	<i>MANCHESTER</i> FALCONBRIDGE <i>Falconbridge</i>	STREET	LOUGHRIN	 HENRY	<i>J. BRADY BUILDING STONE PROJECT 2022</i>
	McKIM <i>Sudbury</i>	NEELON <i>Coniston</i>	DRYDEN	J. BRADY PROPERTY PROPERTY LOCATION - 2022 DISTRICT OF SUDBURY			



Legend

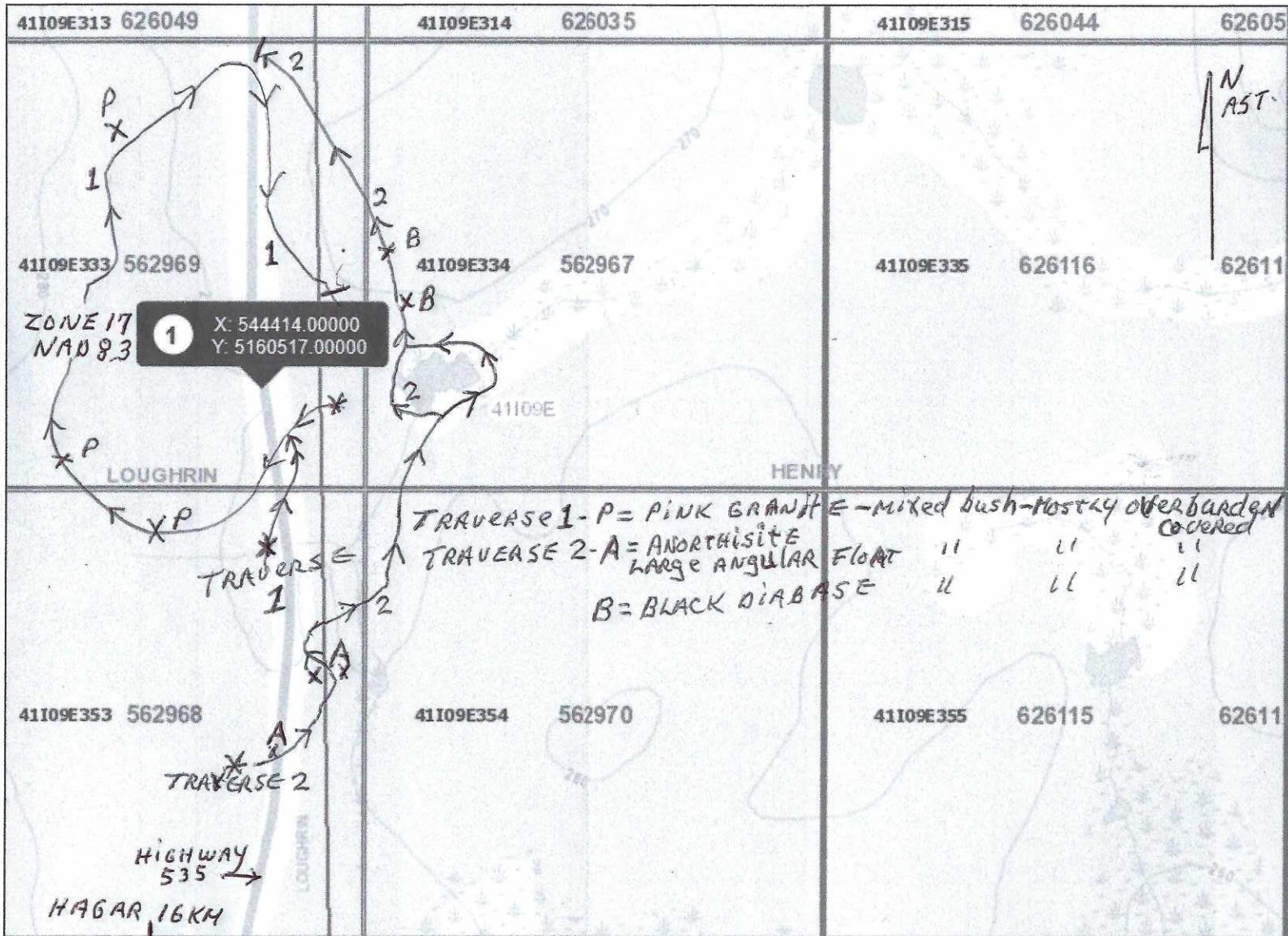
- Provincial Grid Cell**
 - Available
 - Pending
 - Unavailable
- Mining Claim**
 - Mining Claim
 - Boundary Claim
- Alienation**
 - Withdrawal
 - Notice
- NDM Administrative Boundaries**
 - NDM Townships and Areas
 - Geographic Lot Fabric
 - UTM Grid 1K
 - UTM Grid 10K
 - Mining Division
 - Mineral Exploration and Development Region
 - CLUPA Protected Area - Far North
 - Resident Geologist District
 - Federal Land Other
 - Native Reserves
 - AMIS Sites
 - AMIS Features
 - Drill Hole
 - Mineral Occurrences
- MLAS Mining History**
 - Withdrawal - History
 - Notice - History
 - Mining Claim - History
 - Mining Land Tenure - History
 - Legacy Claim
- Provincial Grid**
 - Provincial Grid 250K
 - Provincial Grid 50K
 - Provincial Grid Group
- Land Tenure**
 - Surface Rights
 - Mining Rights
 - Mining and Surface Rights
 - Order-in-Council

Those wishing to register mining claims should consult with the Provincial Mining Recorders' Office of the Northern Development and Mines (NDM) for additional information on the status of the lands shown hereon. This map is not intended for navigational, survey, or land title determination purposes as the information shown on this map is compiled from various sources. Completeness and accuracy are not guaranteed. Additional information may also be obtained through the local Land Titles or Registry Office, or the Natural Resources and Forestry. The information shown is derived from digital data available in the Provincial Mining Recorders' Office at the time of downloading from the Northern Development and Mines (NDM) web site.

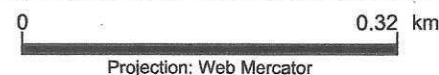


Imagery Copyright Notices: Ontario Ministry of Northern Development, Mines, Natural Resources and Forestry; NASA Landsat Program; First Base Solutions Inc.; Aéro-Photo (1961) Inc.; DigitalGlobe Inc.; U.S. Geological Survey.
© Queen's Printer for Ontario, 2022





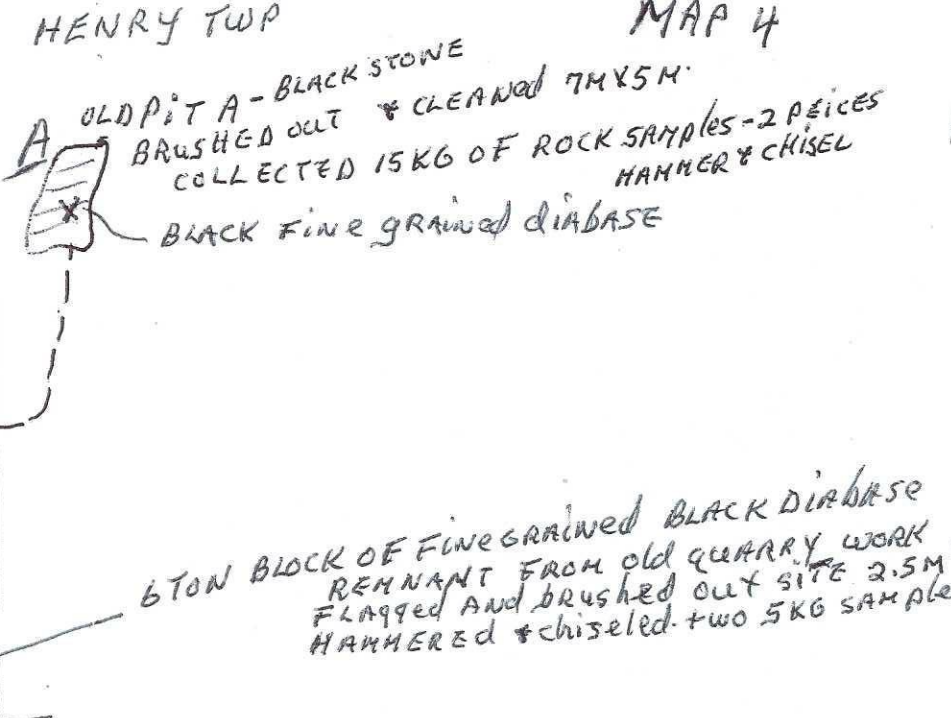
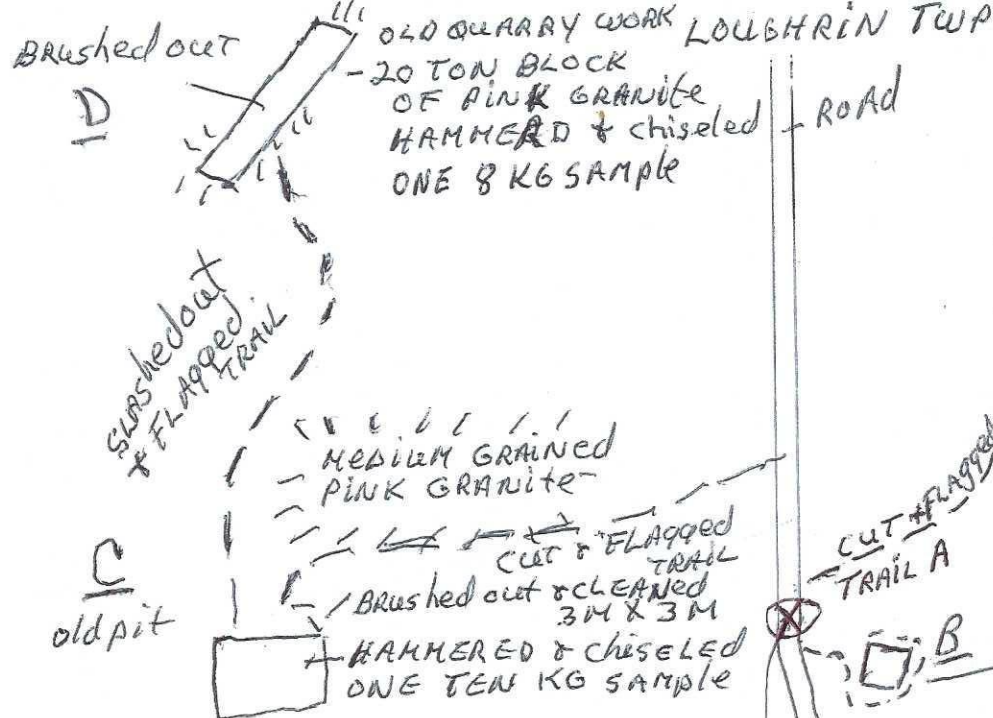
Those wishing to register mining claims should consult with the Provincial Mining Recorders' Office of the Northern Development and Mines (NDM) for additional information on the status of the lands shown hereon. This map is not intended for navigational, survey, or land title determination purposes as the information shown on this map is compiled from various sources. Completeness and accuracy are not guaranteed. Additional information may also be obtained through the local Land Titles or Registry Office, or the Natural Resources and Forestry. The information shown is derived from digital data available in the Provincial Mining Recorders' Office at the time of downloading from the Northern Development and Mines (NDM) web site.



Imagery Copyright Notices: Ontario Ministry of Northern Development, Mines, Natural Resources and Forestry; NASA Landsat Program; First Base Solutions Inc.; Aéro-Photo (1961) Inc.; DigitalGlobe Inc.; U.S. Geological Survey.

© Queen's Printer for Ontario, 2022





CLAIM 562969
CLAIM 562968

POST 2 3 POST
POST 1 4 POST

CLAIM 562967
CLAIM 562970

MAP 4
SAMPLE COLLECTION SITES
TOTAL SAMPLES COLLECTED - SIX
+/- 40 KG. TOTAL

⊗ 544414 E; 5160517 N - UTEM
ZONE 17 NAD 83

0 5M 10M

HIGHWAY 535
TO HAGAR
16 KM

