

We are committed to providing [accessible customer service](#).

If you need accessible formats or communications supports, please [contact us](#).

Nous tenons à améliorer [l'accessibilité des services à la clientèle](#).

Si vous avez besoin de formats accessibles ou d'aide à la communication, veuillez [nous contacter](#).

Copenace Nickle Occurrence 2019

Ni, Cr Project

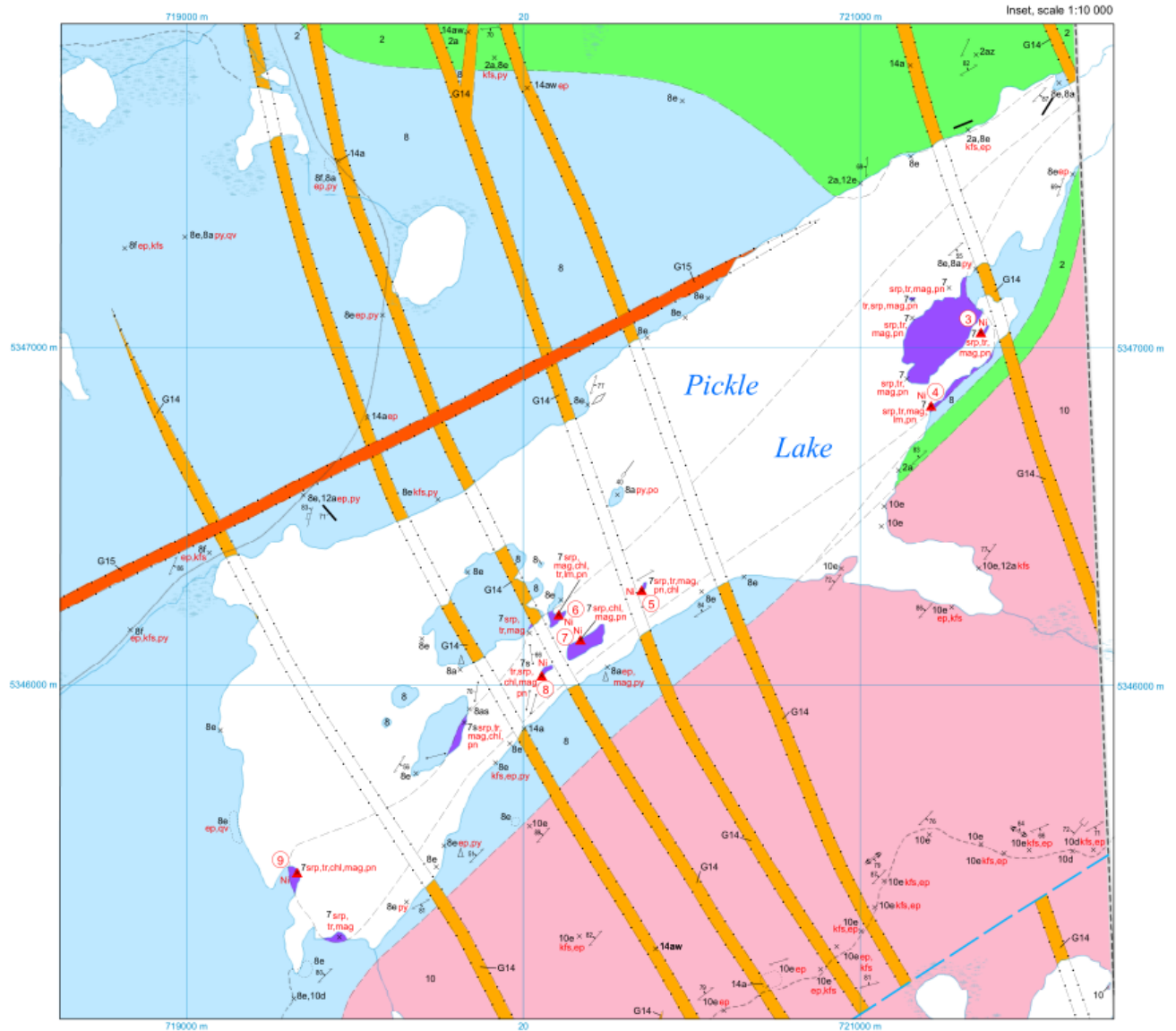
Traxxin
Resources Inc

September 2022

Adam Schneider
Michael Frymire

Overview

The Copenace Nickle Property is a block of 39 claim units located approximately 40km north of Hwy 101 halfway between Chapleau and Wawa, Ontario and encapsulates the majority of Pickle Lake. The property was unexplored until the Ontario Geological Survey visited the area in 2016. OGS sampled the shorelines and lake islands which with no visible mineralization other than magnetite returned a total of 7 samples assaying from 2504ppm up to 4477ppm Ni. Traxxin Resources Inc quickly claimed the area and preformed a short sampling program in the summer of 2019.



Source:

Walker, J. and Robichaud, L. 2018. Precambrian geology of Copenace Township, Michipicoten greenstone belt; Ontario Geological Survey, Preliminary Map P.3814, scale 1:20 000.

(Occurrences listed on following page)

OCCURRENCES^a

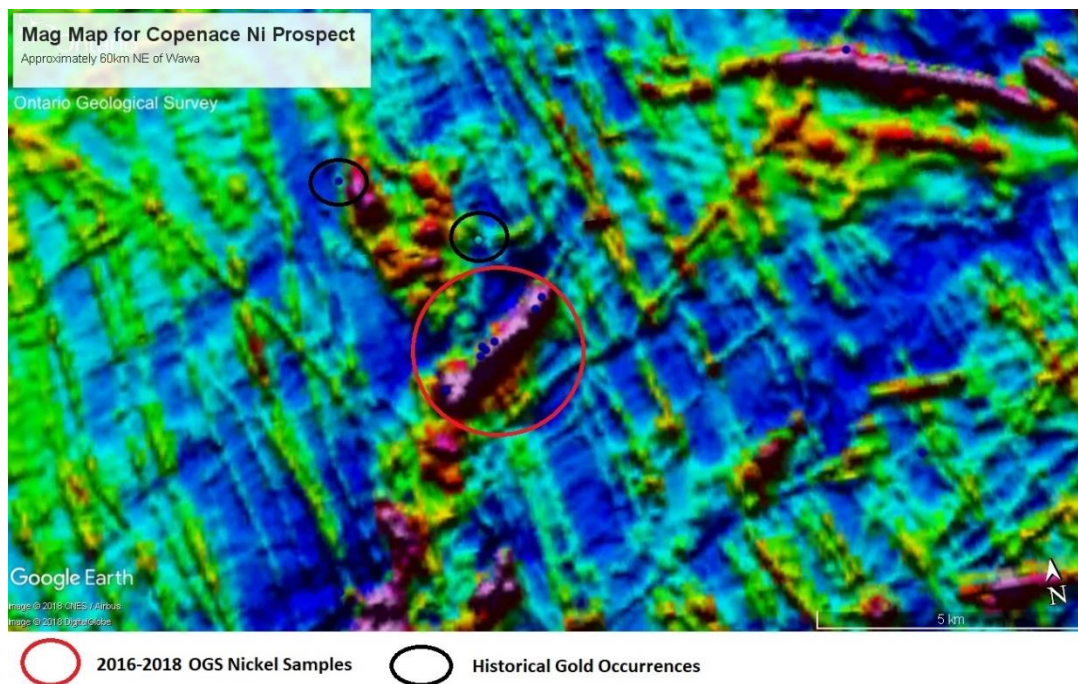
Number ^b	Occurrence	Commodity	Best Historic Value	Host Units
1	MDI42C08SE00095 Anglehart Discovery prospect	Au (Cu)	Up to 0.167 oz/t Au and 2166 ppm Cu	Quartz veins in mafic intrusive rocks
2	MDI42C01NE00011 Gilbert option	Au	Up to 2.40 dwt (4.11 g/t) Au	Shear zone in mafic metavolcanic rocks
3	MDI000000002067 Sample 16JW831A	Ni	Up to 2504 ppm Ni ^c	Serpentinized ultramafic intrusive rocks
4	MDI000000002066 Sample 16JW830A	Ni	Up to 3003 ppm Ni ^c	Serpentinized ultramafic intrusive rocks
5	MDI000000002065 Sample 16JW826A2	Ni	Up to 3042 ppm Ni ^c	Serpentinized ultramafic intrusive rocks
6	MDI000000002069 Sample 16JW852A	Ni	Up to 3786 ppm Ni ^c	Serpentinized ultramafic intrusive rocks
7	MDI000000002064 Sample 16JW822A1	Ni	Up to 3795 ppm Ni ^c	Serpentinized ultramafic intrusive rocks
8	MDI000000002063 Sample 16JW821A1Dark	Ni	Up to 4477 ppm Ni ^c	Serpentinized ultramafic intrusive rocks
9	MDI000000002068 Sample 16JW842A1	Ni	Up to 2719 ppm Ni ^c	Serpentinized ultramafic intrusive rocks
10	MDI000000002070 Sample 16JW906A2	Ni	Up to 2620 ppm Ni ^c	Serpentinized ultramafic intrusive rocks
11	MDI000000002062 Sample 16JW584	Cu	Up to 3474 ppm Cu ^c	Biotite-bearing ultramafic rocks

^a Source: Ontario Geological Survey (2017).

^b "Number" indicates the occurrence location on the map. Discrepancies may occur in the location of the MDI points. Users should verify critical locations.

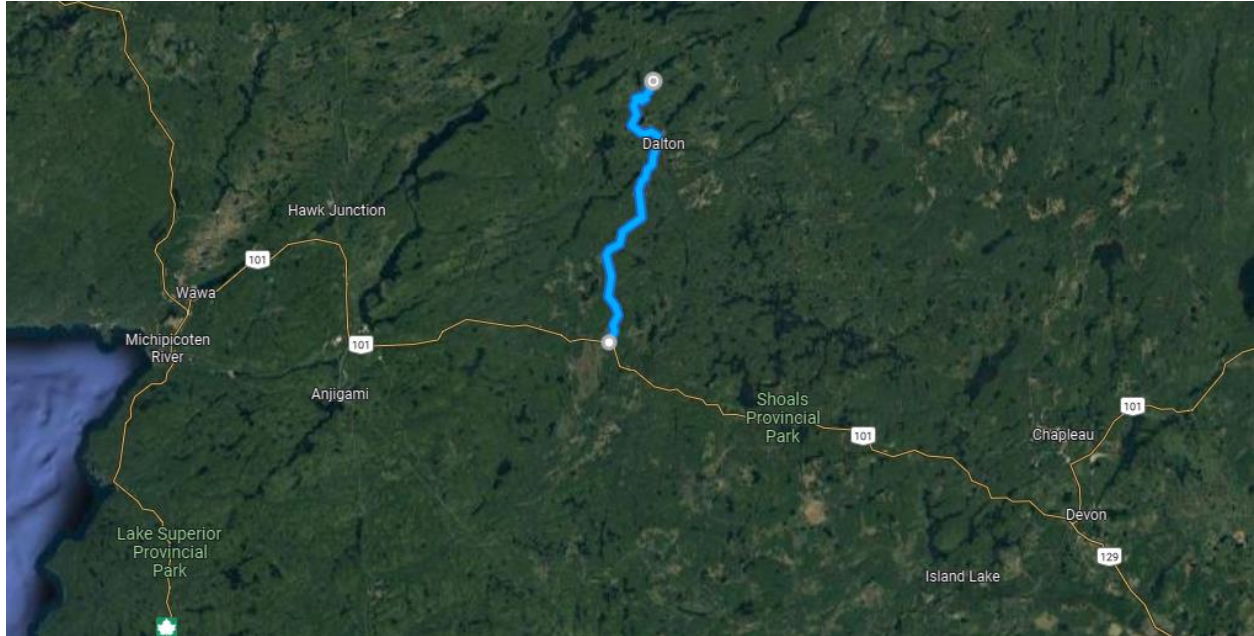
^c Assay values are based on X-ray fluorescence analyses performed during 2016 and 2017 at the Geoscience Laboratories, Ontario Geological Survey, Sudbury. For complete analyses see Walker (2017).

Abbreviations: MDI, Mineral Deposit Inventory; dwt, pennyweight (for denarius weight); g/t, gram per tonne; oz, ounces; oz/t, ounce per ton; ppm = part per million.

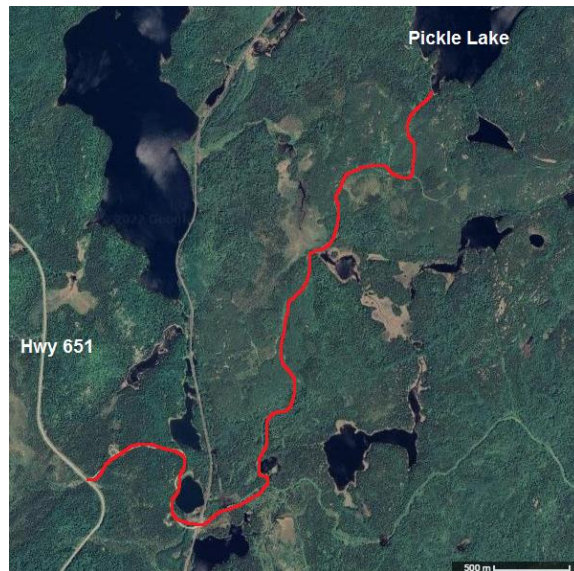


Location and Access

The Copenace Nickle Property is located north of Sault Ste Marie, approximately 40km north of highway 101 between Wawa and Chapleau. To access the property travel 35km north along Hwy 651 then 5km by bush road the south shore of Pickle Lake. Some occurrences are located on islands so a boat (or snow machine in winter) is necessary. Pickle Lake is a lake trout fishing lake and multiple aluminum boats from Northern Portage Lodge are placed on the shores. The property is located within 5km of Hwy 651 and a rail line runs within eye shot of the lake.



Source: Google Maps



Source: Google Maps

Previous Work

The Ontario Geological Survey performed a broad mapping program of the Precambrian Geology of the Copenace Township in 2016 and 2017. This survey returned a grouping of highly anomalous chromium and nickel occurrences along Pickle Lake (listed earlier). Aside from multiple claim posts throughout the property no other signs of work have been done in the area. No other reports of activity have been found.

Current Work

Adam Schneider and Ian Kerslake visited the Copenace claim block in July of 2019 to perform a project overview and sampling program. This included investigating access and visiting noteworthy sites based on the previous visit from the OGS in 2016. A camp was set up and exploration by canoe was completed as well as a total of 26 samples gathered from which 16 were assayed (see table below). Michael Frymire and Katie Misner, also of Traxxin Resources, visited the property on September 9, 2019 for a firsthand view of the property and mainly checked sample sites by Adam and Ian.

Sample No	Easting	Northing	Cr (%)	Ni(%)	Sampler	Date
COP3010	719732	5345728			AS	19-Jul-19
COP4049	719739	5345774			IK	19-Jul-19
COP4050	719722	5345767			IK	19-Jul-19
COP4051	719803	5345818	0.1	0.068	AS	19-Jul-19
COP4052	720054	5346035	1.04	0.402	AS	19-Jul-19
COP4053	720059	5346028			AS	19-Jul-19
COP4054	720141	5346081	1.08	0.426	AS	19-Jul-19
COP4055	720103	5346210			AS	19-Jul-19
COP4056	720120	5346210	1.05	0.414	AS	19-Jul-19
COP4057	719959	5346142			AS	19-Jul-19
COP4058	719819	5346059			IK	19-Jul-19
COP4059	721358	5347009	0.5	0.213	AS	20-Jul-19
COP4060	721269	5346978			AS	20-Jul-19
COP4061	721150	5346897	0.41	0.2	AS	20-Jul-19
COP4062	721186	5346890	0.12	0.053	AS	20-Jul-19
COP4063	721133	5346982			IK	20-Jul-19
COP4064	721154	5347138			AS	20-Jul-19
COP4065	721115	5346639			IK	20-Jul-19
COP4066	720530	5346270	0.02	0.007	AS	20-Jul-19
COP4067	720360	5346300	0.19	0.094	AS	20-Jul-19
COP4068	719271	5345401			AS	21-Jul-19
COP4069	719313	5345460	0.44	0.293	AS	21-Jul-19
COP4070	719301	5345358			AS	21-Jul-19
COP4071	719291	5345278	0.03	0.015	AS	21-Jul-19
COP4072	719350	5345187			AS	21-Jul-19
COP4073	719450	5345267	0.49	0.207	AS	21-Jul-19

*Note not all samples taken were assayed



Location of sample COP4054 (Image by: Adam Schneider)



Conglomerate formation on south shore of Pickle Lake. (Image by: Adam Schneider)

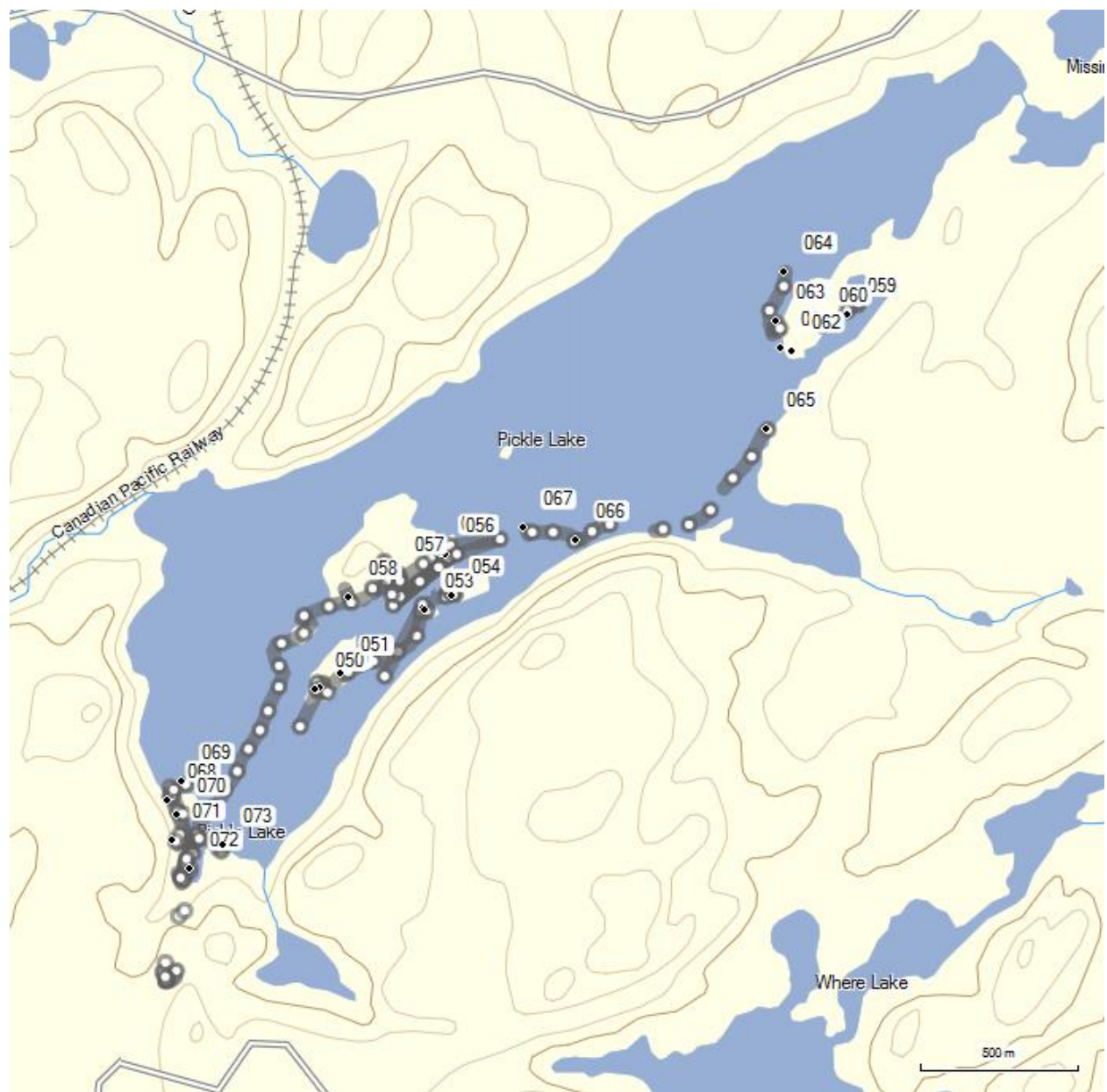
Conclusions and Recommendations

The access to the lake is good with only an approximately 500m hike from a drivable road to the lakes edge. The sampling was done by boating along the lakes shores and islands which makes a boat or canoe necessary however there are multiple aluminum boats owned by the Northern Portage Lodge on shore and the owner could be consulted to save the labour of carrying in another.

After visiting the site, it is recommended that further exploration is needed. Upon this short visit Traxxin was able to replicate the exciting results produced by the OGS. The results gathered by Traxxin included 3 samples over 1% Cr and 0.4% Ni by shoreline canoeing and sampling. The property has only had a couple short exploration passes and gives encouraging results. A more extensive inland and on island exploration program should be completed and perhaps bulk sampling on some of the high chromium and nickel sample points.

Claim Summary (39 Total Claim Units)

Claim Num.	Date Registered	Mining District	Topwnship	Holder
531587	27-Sep-18	Sault Ste Marie	Copenace	Traxxin Resources Inc
531588	27-Sep-18	Sault Ste Marie	Copenace	Traxxin Resources Inc
531589	27-Sep-18	Sault Ste Marie	Copenace	Traxxin Resources Inc
531590	27-Sep-18	Sault Ste Marie	Copenace	Traxxin Resources Inc
531591	27-Sep-18	Sault Ste Marie	Copenace	Traxxin Resources Inc
531697	27-Sep-18	Sault Ste Marie	Copenace	Traxxin Resources Inc
531698	27-Sep-18	Sault Ste Marie	Copenace	Traxxin Resources Inc
531699	27-Sep-18	Sault Ste Marie	Copenace	Traxxin Resources Inc
531700	27-Sep-18	Sault Ste Marie	Copenace	Traxxin Resources Inc
531701	27-Sep-18	Sault Ste Marie	Copenace	Traxxin Resources Inc
531702	27-Sep-18	Sault Ste Marie	Copenace	Traxxin Resources Inc
531703	27-Sep-18	Sault Ste Marie	Copenace	Traxxin Resources Inc
531704	27-Sep-18	Sault Ste Marie	Copenace	Traxxin Resources Inc
531705	27-Sep-18	Sault Ste Marie	Copenace	Traxxin Resources Inc
531706	27-Sep-18	Sault Ste Marie	Copenace	Traxxin Resources Inc
531707	27-Sep-18	Sault Ste Marie	Copenace	Traxxin Resources Inc
531708	27-Sep-18	Sault Ste Marie	Copenace	Traxxin Resources Inc
531709	27-Sep-18	Sault Ste Marie	Copenace	Traxxin Resources Inc
531710	27-Sep-18	Sault Ste Marie	Copenace	Traxxin Resources Inc
531711	27-Sep-18	Sault Ste Marie	Copenace	Traxxin Resources Inc
531712	27-Sep-18	Sault Ste Marie	Copenace	Traxxin Resources Inc
531713	27-Sep-18	Sault Ste Marie	Copenace	Traxxin Resources Inc
531714	27-Sep-18	Sault Ste Marie	Copenace	Traxxin Resources Inc
531715	27-Sep-18	Sault Ste Marie	Copenace	Traxxin Resources Inc
531716	27-Sep-18	Sault Ste Marie	Copenace	Traxxin Resources Inc
531717	27-Sep-18	Sault Ste Marie	Copenace	Traxxin Resources Inc
531718	27-Sep-18	Sault Ste Marie	Copenace	Traxxin Resources Inc
531719	27-Sep-18	Sault Ste Marie	Copenace	Traxxin Resources Inc
531720	27-Sep-18	Sault Ste Marie	Copenace	Traxxin Resources Inc
531721	27-Sep-18	Sault Ste Marie	Copenace	Traxxin Resources Inc
531722	27-Sep-18	Sault Ste Marie	Copenace	Traxxin Resources Inc
531723	27-Sep-18	Sault Ste Marie	Copenace	Traxxin Resources Inc
531724	27-Sep-18	Sault Ste Marie	Copenace	Traxxin Resources Inc
531725	27-Sep-18	Sault Ste Marie	Copenace	Traxxin Resources Inc
531726	27-Sep-18	Sault Ste Marie	Copenace	Traxxin Resources Inc
531727	27-Sep-18	Sault Ste Marie	Copenace	Traxxin Resources Inc
531728	27-Sep-18	Sault Ste Marie	Copenace	Traxxin Resources Inc
531729	27-Sep-18	Sault Ste Marie	Copenace	Traxxin Resources Inc
531730	27-Sep-18	Sault Ste Marie	Copenace	Traxxin Resources Inc



Prospecting Tracks July 2019 (Adam Schneider, Ian Kerslake, GPS Unit (#4): Garmin GPS 76)



Images of Ian Kerslake during sampling July 2019 (Images by: Adam Schneider).
COP4054 Top Left, COP4052 Top Right, COP4061 Bottom



Images from Michael Frymire and Katie Misner's property visit September 2019. (Images by: Katie Misner)



Date Submitted: 09-Aug-19
Invoice No.: A19-10390
Invoice Date: 29-Aug-19
Your Reference:

Traxin Resources
377 Albert Street
Stratford Ontario N5A-2L1
Canada

ATTN: Mike Frymire

CERTIFICATE OF ANALYSIS

22 Rock samples were submitted for analysis.

The following analytical package(s) were requested:

Code 1A2 QOP AA-Au (Au - Fire Assay AA)
Code 1C-Assay OES QOP PGE-OES (Fire Assay ICPOES)
Code 8-Peroxide ICP QOP Sodium Peroxide (Sodium Peroxide Fusion ICP)

REPORT **A19-10390**

This report may be reproduced without our consent. If only selected portions of the report are reproduced, permission must be obtained. If no instructions were given at time of sample submittal regarding excess material, it will be discarded within 90 days of this report. Our liability is limited solely to the analytical cost of these analyses. Test results are representative only of material submitted for analysis.

Notes:

If value exceeds upper limit we recommend reassay by fire assay gravimetric-Code 1A3

CERTIFIED BY:

A handwritten signature in black ink, appearing to read "Emmanuel Esemé". The signature is written over a horizontal line.

Emmanuel Esemé , Ph.D.
Quality Control

ACTIVATION LABORATORIES LTD.
41 Bittern Street, Ancaster, Ontario, Canada, L9G 4V5
TELEPHONE +905 648-9611 or +1.888.228.5227 FAX +1.905.648.9613
E-MAIL Ancaster@actlabs.com ACTLABS GROUP WEBSITE www.actlabs.com

Analyte Symbol	Cr	Cu	Ni	Au	Pd	Pt	Au
Unit Symbol	%	%	%	ppb	ppb	ppb	ppb
Lower Limit	0.01	0.005	0.005	2	5	5	5
Method Code	FUS- Na2O2	FUS- Na2O2	FUS- Na2O2	FA-ICP	FA-ICP	FA-ICP	FA-AA
COP 4051	0.10	< 0.005	0.068	< 2	< 5	< 5	
COP 4052	1.04	< 0.005	0.402	< 2	< 5	< 5	
COP 4054	1.08	< 0.005	0.426	< 2	< 5	< 5	
COP 4056	1.05	< 0.005	0.414	< 2	< 5	8	
COP 4059	0.50	< 0.005	0.213	4	< 5	< 5	
COP 4061	0.41	< 0.005	0.200	< 2	< 5	< 5	
COP 4062	0.12	< 0.005	0.053	< 2	< 5	< 5	
COP 4066	0.02	< 0.005	0.007	< 2	< 5	< 5	
COP 4067	0.19	< 0.005	0.094	< 2	< 5	< 5	
COP 4069	0.44	< 0.005	0.293	< 2	< 5	< 5	
COP 4071	0.03	< 0.005	0.015	< 2	< 5	< 5	
COP 4073	0.49	< 0.005	0.207	< 2	< 5	< 5	
19PT001	< 0.01	< 0.005	< 0.005	14	< 5	< 5	
19PT002	0.08	1.07	0.383	71	34	125	
19PT006	0.04	0.020	0.008	< 2	8	< 5	
19PT007	0.07	0.089	0.040	17	71	242	
19MEL008							< 5
19MEL009							6
19MEL010							< 5
19SMI043							322
19SMI045							234
19SMI047							1180

Analyte Symbol	Cr	Cu	Ni	Au	Au	Pd	Pt
Unit Symbol	%	%	%	ppb	ppb	ppb	ppb
Lower Limit	0.01	0.005	0.005	5	2	5	5
Method Code	FUS-Na2O2	FUS-Na2O2	FUS-Na2O2	FA-AA	FA-ICP	FA-ICP	FA-ICP
PTM-1a Meas		23.5	46.6				
PTM-1a Cert		24.96	47.44				
DTS-2b Meas	1.58	< 0.005	0.388				
DTS-2b Cert	1.55	0.00030 0	0.378				
Oreas 74a (Fusion) Meas	0.18	0.117	3.23				
Oreas 74a (Fusion) Cert	0.18	0.124	3.24				
MP-1b Meas		3.06					
MP-1b Cert		3.07					
NCS DC73304 (GBW 07106) Meas	< 0.01	< 0.005	< 0.005				
NCS DC73304 (GBW 07106) Cert							
PK2 Meas					4910	6080	4840
PK2 Cert					4785	5918	4749
CZN-4 Meas		0.404					
CZN-4 Cert		0.403					
OREAS 922 (Peroxide Fusion) Meas	< 0.01	0.222	< 0.005				
OREAS 922 (Peroxide Fusion) Cert	0.009	0.222	0.004				
CCU-1e Meas		22.0					
CCU-1e Cert		22.9					
OREAS 254 Fire Assay Meas				2500			
OREAS 254 Fire Assay Cert				2550			
OREAS 254 Fire Assay Meas				2470			
OREAS 254 Fire Assay Cert				2550			
OREAS 220 (Fire Assay) Meas				836			
OREAS 220 (Fire Assay) Cert				866			
COP 4059 Orig					4	< 5	< 5
COP 4059 Dup					4	< 5	< 5
COP 4066 Orig	0.02	< 0.005	0.007				
COP 4066 Dup	0.02	< 0.005	0.007				

Analyte Symbol	Cr	Cu	Ni	Au	Au	Pd	Pt
Unit Symbol	%	%	%	ppb	ppb	ppb	ppb
Lower Limit	0.01	0.005	0.005	5	2	5	5
Method Code	FUS-Na2O2	FUS-Na2O2	FUS-Na2O2	FA-AA	FA-ICP	FA-ICP	FA-ICP
COP 4069 Orig	0.45	< 0.005	0.294				
COP 4069 Dup	0.44	< 0.005	0.292				
19PT006 Orig					< 2	8	< 5
19PT006 Dup					< 2	8	< 5
19PT007 Orig	0.07	0.089	0.041				
19PT007 Dup	0.07	0.089	0.040				
19MEL008 Orig				< 5			
19MEL008 Split PREP DUP				< 5			
Method Blank	< 0.01	< 0.005	< 0.005				
Method Blank	< 0.01	< 0.005	< 0.005				
Method Blank					< 2	< 5	< 5
Method Blank					< 2	< 5	< 5
Method Blank				< 5			
Method Blank				5			
Method Blank				< 5			

Copenace 2019 Cost Breakdown

Category	Date	Payee	Description	Amount
Prospecting	July 19, 2019	Adam, Ian	\$400/Day/Prospector	\$800.00
	July 20, 2019	Adam, Ian	\$400/Day/Prospector	\$800.00
	July 21, 2019	Adam, Ian	\$400/Day/Prospector	\$800.00
	Sept. 9, 2019	Mike, Katie	\$400/Day/Prospector	\$800.00
Reporting	Sept. 2022	Adam		\$400.00
			Sub-Total	\$3600.00
Food Allowance	July 19, 2019	Adam, Ian	\$50/Day/Prospector	\$100.00
	July 20, 2019	Adam, Ian	\$50/Day/Prospector	\$100.00
	July 21, 2019	Adam, Ian	\$50/Day/Prospector	\$100.00
	Sept. 9, 2019	Mike, Katie	\$50/Day/Prospector	\$100.00
			Sub-Total	\$400.00
Transportation*	July 19, 2019	Adam (1 Vehicle)	980km @ \$0.55/km	\$539.00
	July 21, 2019	Adam (1 Vehicle)	980km @ \$0.55/km	\$539.00
	Sept. 9, 2019	Mike (1 Vehicle)	980km @ \$0.55/km	\$539.00
	Sept. 10, 2019	Mike (1 Vehicle)	980km @ \$0.55/km	\$539.00
			Sub-Total	\$2156.00
Assay**	Aug. 29, 2019	Actlabs	16 Samples Cert. A19-10390	\$1047.74
			Total	\$7203.74

*Transportation costs are based on travel from Stratford, Ont. to Dalton, Ont. (980km) at an allowance of \$0.55 per km. This is meant to cover fuel, vehicle use and driving time.

**Assay costs are calculated from assay A19-10390 which included more samples than from this property alone. Only applicable costs were used.