

We are committed to providing [accessible customer service](#).

If you need accessible formats or communications supports, please [contact us](#).

Nous tenons à améliorer [l'accessibilité des services à la clientèle](#).

Si vous avez besoin de formats accessibles ou d'aide à la communication, veuillez [nous contacter](#).

Copenace Nickle Occurrence 2022

Ni, Cr Project

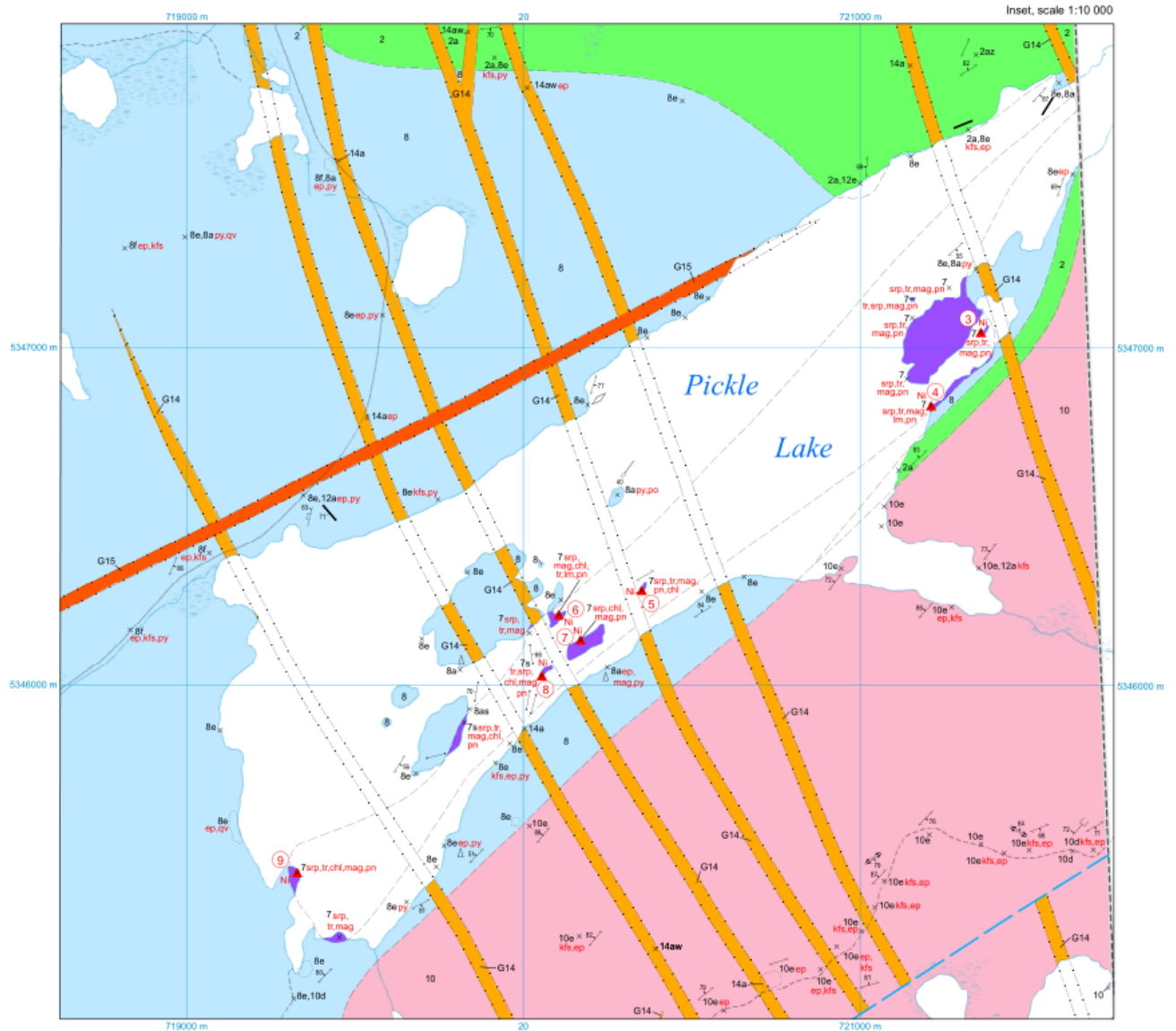
Traxxin
Resources Inc

September 2022

Adam Schneider
Michael Frymire

Overview

The Copenace Nickle Property is a block of 39 claim units located approximately 40km north of Hwy 101 halfway between Chapleau and Wawa, Ontario and encapsulates the majority of Pickle Lake. The property was unexplored until the Ontario Geological Survey visited the area in 2016. OGS sampled the shorelines and lake islands which with no visible mineralization other than magnetite returned a total of 7 samples assaying from 2504ppm up to 4477ppm Ni. Traxxin Resources Inc quickly claimed the area and preformed a short sampling program in the summer of 2019.



Source:

Walker, J. and Robichaud, L. 2018. Precambrian geology of Copenace Township, Michipicoten greenstone belt; Ontario Geological Survey, Preliminary Map P.3814, scale 1:20 000.

(Occurrences listed on following page)

OCCURRENCES^a

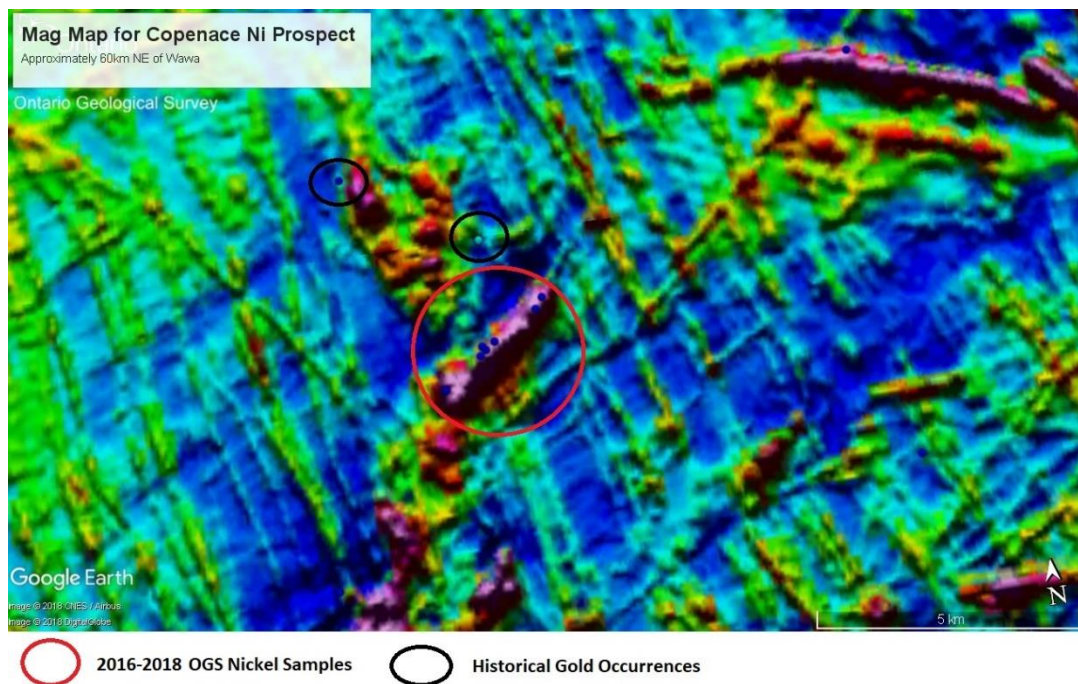
Number ^b	Occurrence	Commodity	Best Historic Value	Host Units
1	MDI42C08SE00095 Anglehart Discovery prospect	Au (Cu)	Up to 0.167 oz/t Au and 2166 ppm Cu	Quartz veins in mafic intrusive rocks
2	MDI42C01NE00011 Gilbert option	Au	Up to 2.40 dwt (4.11 g/t) Au	Shear zone in mafic metavolcanic rocks
3	MDI000000002067 Sample 16JW831A	Ni	Up to 2504 ppm Ni ^c	Serpentinized ultramafic intrusive rocks
4	MDI000000002066 Sample 16JW830A	Ni	Up to 3003 ppm Ni ^c	Serpentinized ultramafic intrusive rocks
5	MDI000000002065 Sample 16JW826A2	Ni	Up to 3042 ppm Ni ^c	Serpentinized ultramafic intrusive rocks
6	MDI000000002069 Sample 16JW852A	Ni	Up to 3786 ppm Ni ^c	Serpentinized ultramafic intrusive rocks
7	MDI000000002064 Sample 16JW822A1	Ni	Up to 3795 ppm Ni ^c	Serpentinized ultramafic intrusive rocks
8	MDI000000002063 Sample 16JW821A1Dark	Ni	Up to 4477 ppm Ni ^c	Serpentinized ultramafic intrusive rocks
9	MDI000000002068 Sample 16JW842A1	Ni	Up to 2719 ppm Ni ^c	Serpentinized ultramafic intrusive rocks
10	MDI000000002070 Sample 16JW906A2	Ni	Up to 2620 ppm Ni ^c	Serpentinized ultramafic intrusive rocks
11	MDI000000002062 Sample 16JW584	Cu	Up to 3474 ppm Cu ^c	Biotite-bearing ultramafic rocks

^a Source: Ontario Geological Survey (2017).

^b "Number" indicates the occurrence location on the map. Discrepancies may occur in the location of the MDI points. Users should verify critical locations.

^c Assay values are based on X-ray fluorescence analyses performed during 2016 and 2017 at the Geoscience Laboratories, Ontario Geological Survey, Sudbury. For complete analyses see Walker (2017).

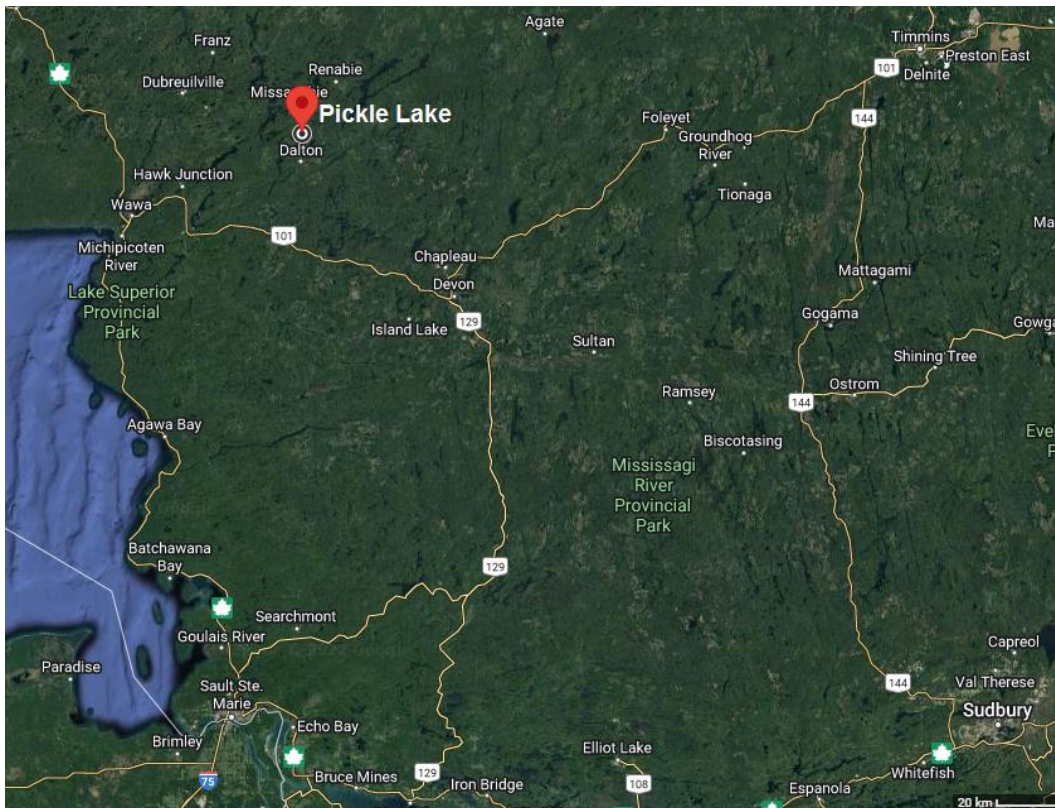
Abbreviations: MDI, Mineral Deposit Inventory; dwt, pennyweight (for denarius weight); g/t, gram per tonne; oz, ounces; oz/t, ounce per ton; ppm = part per million.



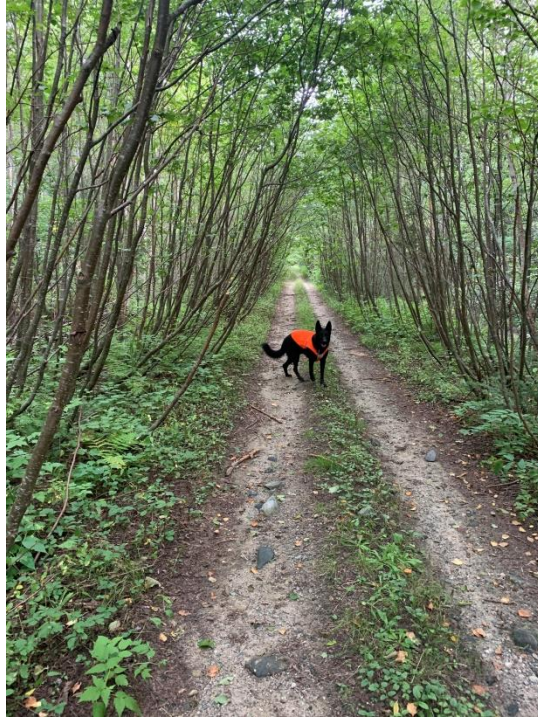
Location and Access

The Copenace Nickle Property is located north of Sault Ste Marie, approximately 40km north of highway 101 between Wawa and Chapleau. To access the property travel 35km north along Hwy 651 just beyond the Dalton turn off then by bush road to Pickle Lake.

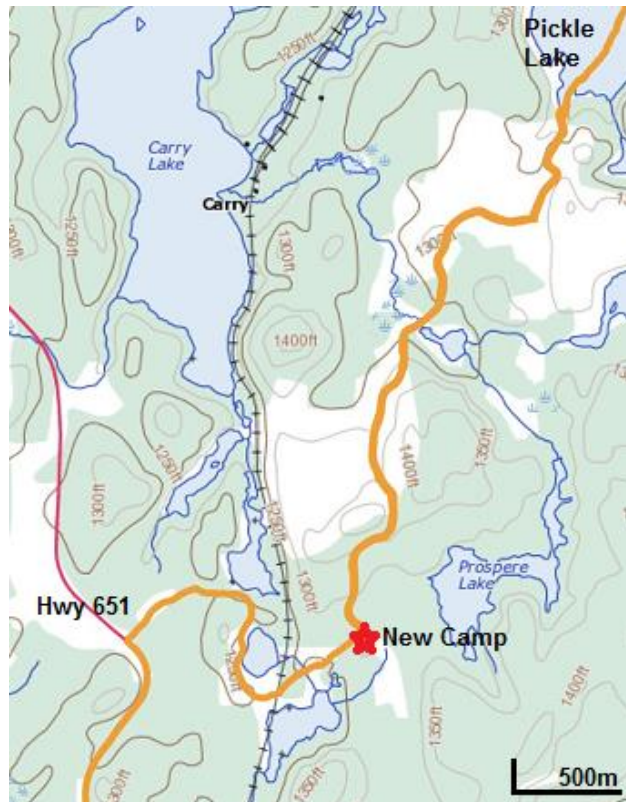
The bush road has grown in considerably since last visited by Traxxin Resources in 2019 and is only drivable by road vehicle for approximately 1.5km of the 5km distance. It is recommended to bring an ATV or vehicle appropriate for the grown in road if one is to avoid the 3km hike and getting a boat to the lakes edge. It should be considered that there are boats marked Northern Portage Lodge located at the south shore of Pickle Lake and on the west shore where the CP rail track is visible from the lake and the owner could be contacted. A boat or canoe is necessary as most occurrences are located on islands on the lake.



Source: Google Maps



A good section of the bush road to Pickle Lake (Photo by: Adam Schneider)



Bush road to access Pickle Lake (Map: Toporama - 042C01; Natural Resources Canada)

Previous Work

The Ontario Geological Survey performed a broad mapping program of the Precambrian Geology of the Copenace Township in 2016 and 2017. This survey returned a grouping of highly anomalous chromium and nickel occurrences along Pickle Lake (listed earlier).

In July of 2019, Adam Schneider and Ian Kerslake of Traxin Resources visited the property and completed a first pass of sampling to locate and replicate that of the OGS. They were able to find some of the past sample points with help from old flagging tape and pictures from the OGS report. Adam and Ian had sampled these and more locations and yielded assay results including 7 samples $\geq 0.2\%$ Ni and 4 samples $> 1\%$ Cr.

Sample No	Easting	Northing	Cr (%)	Ni(%)	Sampler	Date
COP3010	719732	5345728			AS	19-Jul-19
COP4049	719739	5345774			IK	19-Jul-19
COP4050	719722	5345767			IK	19-Jul-19
COP4051	719803	5345818	0.1	0.068	AS	19-Jul-19
COP4052	720054	5346035	1.04	0.402	AS	19-Jul-19
COP4053	720059	5346028			AS	19-Jul-19
COP4054	720141	5346081	1.08	0.426	AS	19-Jul-19
COP4055	720103	5346210			AS	19-Jul-19
COP4056	720120	5346210	1.05	0.414	AS	19-Jul-19
COP4057	719959	5346142			AS	19-Jul-19
COP4058	719819	5346059			IK	19-Jul-19
COP4059	721358	5347009	0.5	0.213	AS	20-Jul-19
COP4060	721269	5346978			AS	20-Jul-19
COP4061	721150	5346897	0.41	0.2	AS	20-Jul-19
COP4062	721186	5346890	0.12	0.053	AS	20-Jul-19
COP4063	721133	5346982			IK	20-Jul-19
COP4064	721154	5347138			AS	20-Jul-19
COP4065	721115	5346639			IK	20-Jul-19
COP4066	720530	5346270	0.02	0.007	AS	20-Jul-19
COP4067	720360	5346300	0.19	0.094	AS	20-Jul-19
COP4068	719271	5345401			AS	21-Jul-19
COP4069	719313	5345460	0.44	0.293	AS	21-Jul-19
COP4070	719301	5345358			AS	21-Jul-19
COP4071	719291	5345278	0.03	0.015	AS	21-Jul-19
COP4072	719350	5345187			AS	21-Jul-19
COP4073	719450	5345267	0.49	0.207	AS	21-Jul-19

*Note not all samples taken were assayed

Current Work

After a long hiatus due to Covid-19, Traxxin had finally returned to the Copenace Nickel Prospect at Pickle Lake near Dalton, Ont in late August of 2022. Adam Schneider and Lionel Schneider visited the property from August 28th through the 30th. The focus of the trip was to continue sampling and begin to measure and map the intrusion. This was however cut short as the weather would not cooperate with the short window of time set for the trip. The condition of the road made the productivity of the days considerably shorter due to the unexpected 3km hike to and from the lake. This was also with thunderstorms made being on the lake unsafe. As so the first day was used to assess and clear bad sections of the road to gain access to the lake with the canoe. The next day was spent sampling the islands as they were the areas of most interest and Adam and Lionel were met by an afternoon thunderstorm. Lastly the third day was spent organizing samples and retrieving the canoe in the rain.

The productivity of the trip was cut to a minimum by weather and prospecting should continue but may be on hold until the summer of 2023.



Lionel Schneider exploring the islands of Pickle Lake (Photo by: Adam Schneider)

Conclusions and Recommendations

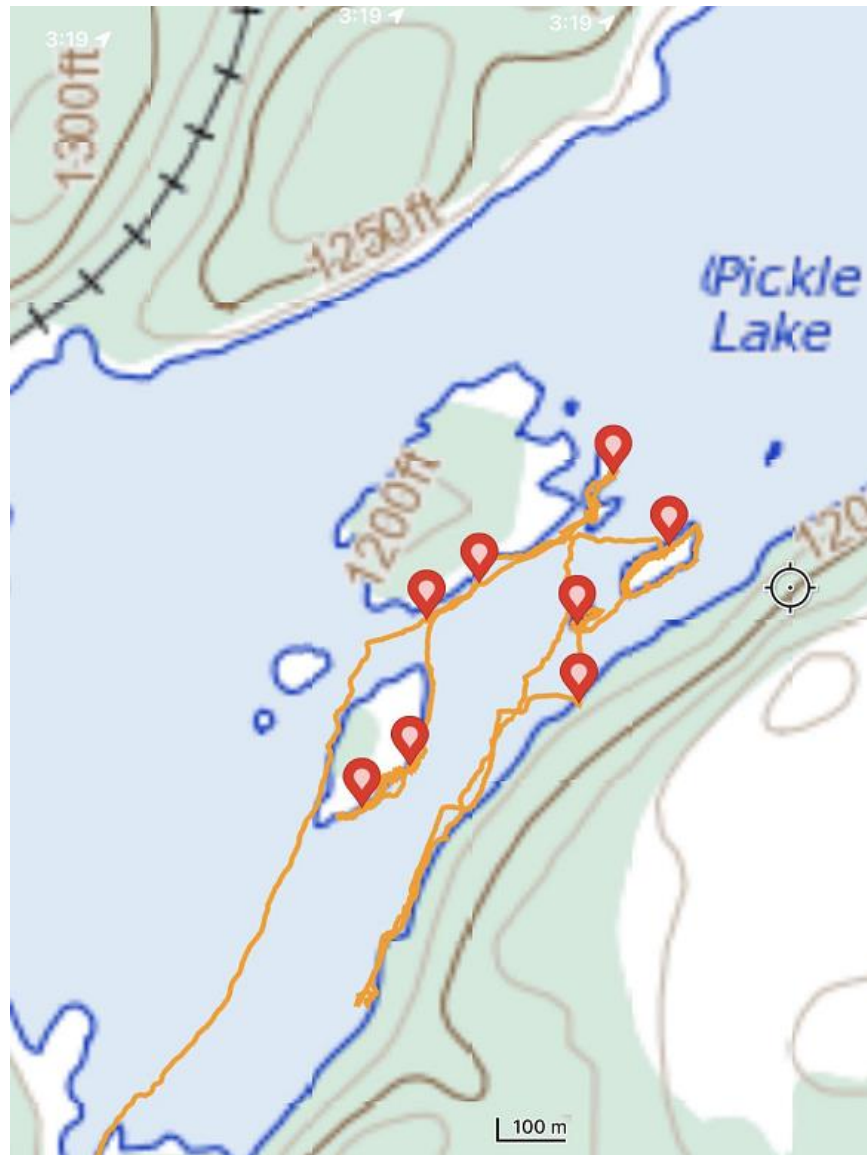
The Copenace Prospect is an exciting property especially considering the ease of grabbing samples which will return considerable nickel and chromium values. The lake gives easy access to areas of interest as long as you can gain access by boat. The road should be opened back up to allow easy driving access to save time and energy by setting up camp closer to the lake's shore.

Given the results from the first pass of the property, yielding assay results including 7 samples $\geq 0.2\%$ Ni and 4 samples $> 1\%$ Cr, as stated earlier, it must have further work performed.

The showings need to be further mapped and defined and time should be spent on the lakes shores to determine the extent of the intrusion. This property is still in its infancy and warrants further exploration.

Claim Summary (39 Total Claim Units)

Claim Num.	Date Registered	Mining District	Topwnship	Holder
531587	27-Sep-18	Sault Ste Marie	Copenace	Traxxin Resources Inc
531588	27-Sep-18	Sault Ste Marie	Copenace	Traxxin Resources Inc
531589	27-Sep-18	Sault Ste Marie	Copenace	Traxxin Resources Inc
531590	27-Sep-18	Sault Ste Marie	Copenace	Traxxin Resources Inc
531591	27-Sep-18	Sault Ste Marie	Copenace	Traxxin Resources Inc
531697	27-Sep-18	Sault Ste Marie	Copenace	Traxxin Resources Inc
531698	27-Sep-18	Sault Ste Marie	Copenace	Traxxin Resources Inc
531699	27-Sep-18	Sault Ste Marie	Copenace	Traxxin Resources Inc
531700	27-Sep-18	Sault Ste Marie	Copenace	Traxxin Resources Inc
531701	27-Sep-18	Sault Ste Marie	Copenace	Traxxin Resources Inc
531702	27-Sep-18	Sault Ste Marie	Copenace	Traxxin Resources Inc
531703	27-Sep-18	Sault Ste Marie	Copenace	Traxxin Resources Inc
531704	27-Sep-18	Sault Ste Marie	Copenace	Traxxin Resources Inc
531705	27-Sep-18	Sault Ste Marie	Copenace	Traxxin Resources Inc
531706	27-Sep-18	Sault Ste Marie	Copenace	Traxxin Resources Inc
531707	27-Sep-18	Sault Ste Marie	Copenace	Traxxin Resources Inc
531708	27-Sep-18	Sault Ste Marie	Copenace	Traxxin Resources Inc
531709	27-Sep-18	Sault Ste Marie	Copenace	Traxxin Resources Inc
531710	27-Sep-18	Sault Ste Marie	Copenace	Traxxin Resources Inc
531711	27-Sep-18	Sault Ste Marie	Copenace	Traxxin Resources Inc
531712	27-Sep-18	Sault Ste Marie	Copenace	Traxxin Resources Inc
531713	27-Sep-18	Sault Ste Marie	Copenace	Traxxin Resources Inc
531714	27-Sep-18	Sault Ste Marie	Copenace	Traxxin Resources Inc
531715	27-Sep-18	Sault Ste Marie	Copenace	Traxxin Resources Inc
531716	27-Sep-18	Sault Ste Marie	Copenace	Traxxin Resources Inc
531717	27-Sep-18	Sault Ste Marie	Copenace	Traxxin Resources Inc
531718	27-Sep-18	Sault Ste Marie	Copenace	Traxxin Resources Inc
531719	27-Sep-18	Sault Ste Marie	Copenace	Traxxin Resources Inc
531720	27-Sep-18	Sault Ste Marie	Copenace	Traxxin Resources Inc
531721	27-Sep-18	Sault Ste Marie	Copenace	Traxxin Resources Inc
531722	27-Sep-18	Sault Ste Marie	Copenace	Traxxin Resources Inc
531723	27-Sep-18	Sault Ste Marie	Copenace	Traxxin Resources Inc
531724	27-Sep-18	Sault Ste Marie	Copenace	Traxxin Resources Inc
531725	27-Sep-18	Sault Ste Marie	Copenace	Traxxin Resources Inc
531726	27-Sep-18	Sault Ste Marie	Copenace	Traxxin Resources Inc
531727	27-Sep-18	Sault Ste Marie	Copenace	Traxxin Resources Inc
531728	27-Sep-18	Sault Ste Marie	Copenace	Traxxin Resources Inc
531729	27-Sep-18	Sault Ste Marie	Copenace	Traxxin Resources Inc
531730	27-Sep-18	Sault Ste Marie	Copenace	Traxxin Resources Inc



Prospecting tracks and sample points Aug. 2022 (Adam Schneider and Lionel Schneider, Avenza Maps; Map; Toporama – 042C01, Natural Resources Canada)

Sample Points

Sample No	Easting	Northing	Sampler	Date	Comment
22AS001	719805	5345820	AS	Aug. 29, 2022	Dark ultramafic
22AS002	720110	5346254	AS	Aug. 29, 2022	Dark olive coloured ultramafic, highly weathered
22AS003	720056	5346029	AS	Aug. 29, 2022	Lighter olive coloured ultramafic, highly weathered
22AS004	720194	5346147	AS	Aug. 29, 2022	Dark grey ultramafic
22AS005F	720059	5345912	AS	Aug. 29, 2022	Light olive colour, altered, Float
22AS006	719733	5345757	AS	Aug. 29, 2022	Dark black ultramafic, very altered
22AS007	719909	5346094	AS	Aug. 29, 2022	Dark black ultramafic, weathers very light brown
22AS008	719830	5346039	AS	Aug. 29, 2022	Dark olive ultramafic



Abandoned mining post (NAD83; UTM 16N; E719733, N5345757) (top left), small island with MDI00000002063 located upon (top right), CP Rail line visible from the lake (bottom) (Photos by: Adam Schneider)

Copenace 2019 Cost Breakdown

Category	Date	Payee	Description	Amount
Prospecting	Aug. 28, 2022	Adam, Lionel	\$400/Day/Prospector	\$800.00
	Aug. 29, 2022	Adam, Lionel	\$400/Day/Prospector	\$800.00
	Aug. 30, 2022	Adam, Lionel	\$400/Day/Prospector	\$800.00
Reporting	Sept. 2022	Adam		\$400.00
			Sub-Total	\$2800.00
Food Allowance	Aug. 28, 2022	Adam, Lionel	\$60/Day/Prospector	\$120.00
	Aug. 29, 2022	Adam, Lionel	\$60/Day/Prospector	\$120.00
	Aug. 30, 2022	Adam, Lionel	\$60/Day/Prospector	\$120.00
			Sub-Total	\$360.00
Transportation*	Aug. 28, 2022	Adam (1 Vehicle)	980km @ \$0.60/km	\$588.00
	Aug. 30, 2022	Adam (1 Vehicle)	980km @ \$0.60/km	\$588.00
			Sub-Total	\$1176.00
			Total	\$4336.00

*Transportation costs are based on travel from Stratford, Ont. to Dalton, Ont. (980km) at an allowance of \$0.60 per km. This is meant to cover fuel, vehicle use and driving time.