

We are committed to providing [accessible customer service](#).

If you need accessible formats or communications supports, please [contact us](#).

Nous tenons à améliorer [l'accessibilité des services à la clientèle](#).

Si vous avez besoin de formats accessibles ou d'aide à la communication, veuillez [nous contacter](#).

PROSPECTING LOG 2022
BARTLETT PROPERTY
BARTLETT TOWNSHIP
PORCUPINE MINING DIVISION
VICTOR WARFORD
October 29 2022

Report for Prospecting Work For Claims #563060 (42A03F31) and #563059(42A03F051)

Location and Access

Claims #563060 and #563059 are located in the northwest of Bartlett Township 3km south west of Marceau Lake. Access using Pine ST south 30km to a logging road to the south 3km to the truck park. An ATV is used for the last 3km.

July 15 2022

Traveled with Willium Baker to claims via Pine St to truck park. The last 3 km is very grown in and had to cut our way through an th Black Flies were very bad. Made it to sample location #1 and explored a pile of large boulders with unusual mineralization. Colected sample 1. Cut our way back to the truck pritty scatched up frme the overgroath.

July 16 2022

Traveled with Willium Baker to claims via Pine S2 to truck park. The last 3 km was a lot easier and there was some wind. Traveled around a previous pit which consists of a large quarts vein. Took samples ant sample locaton 2 and 3.

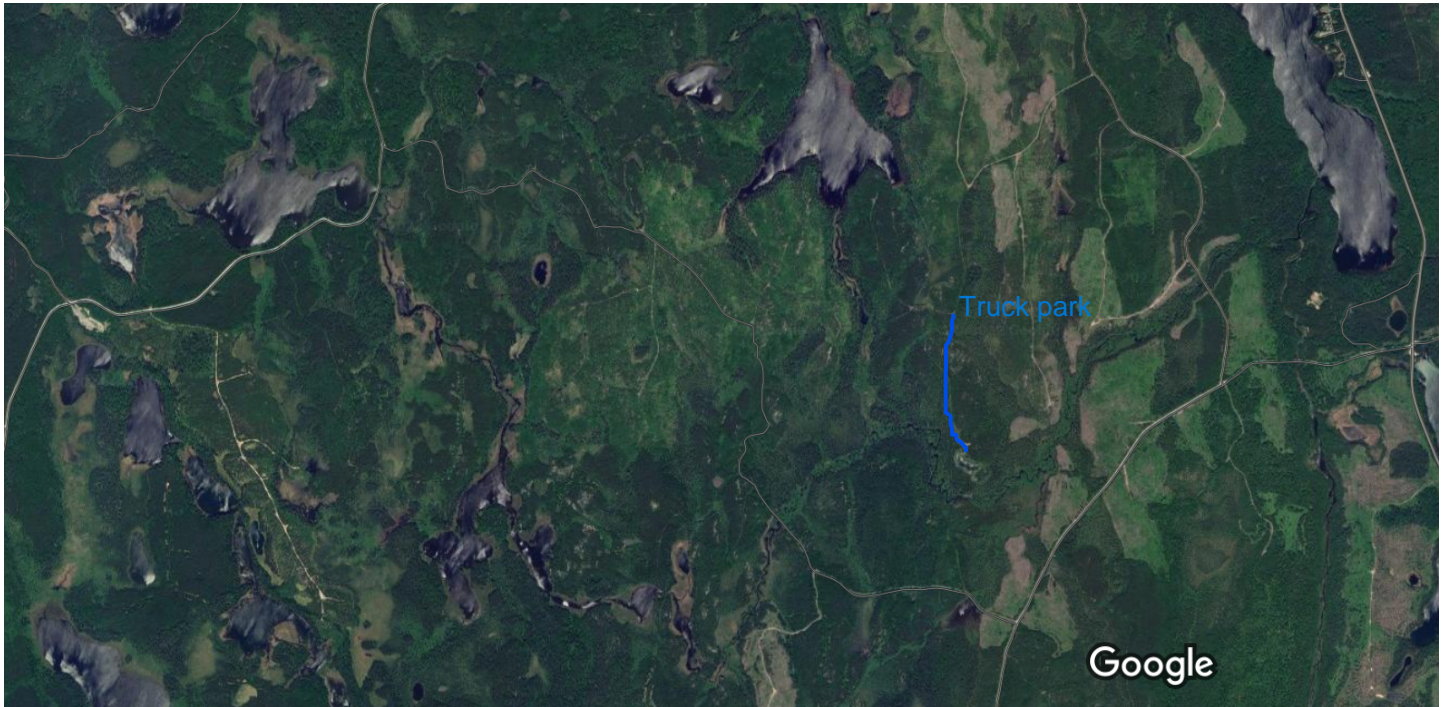
July 29 2022

Prepeped samples and contacted lab for sampling for gold in telirium. It is very expensive Samples are pending.

October 29 2022

Created report

**Total Time: Victor Warford 3.5 Days
Willium Baker 2.0 Days**




Imagery ©2022 CNES / Airbus, Landsat / Copernicus, Maxar Technologies, Map data ©2022 500 m



Timmins

Ontario


Clear · 2°C
8:00 AM



Directions



Save



Nearby



Send to
phone



Share

Quick facts



Ministry of Northern Development, Mines, Natural Resources and Forestry (NDMNR) Mining Lands Claim Map

Administrative Districts

Township
BARTLETT
Mining Division
Porcupine
Land Registry
TIMISKAMING
Natural Resources and Forestry District Office
Timmins

Topographic

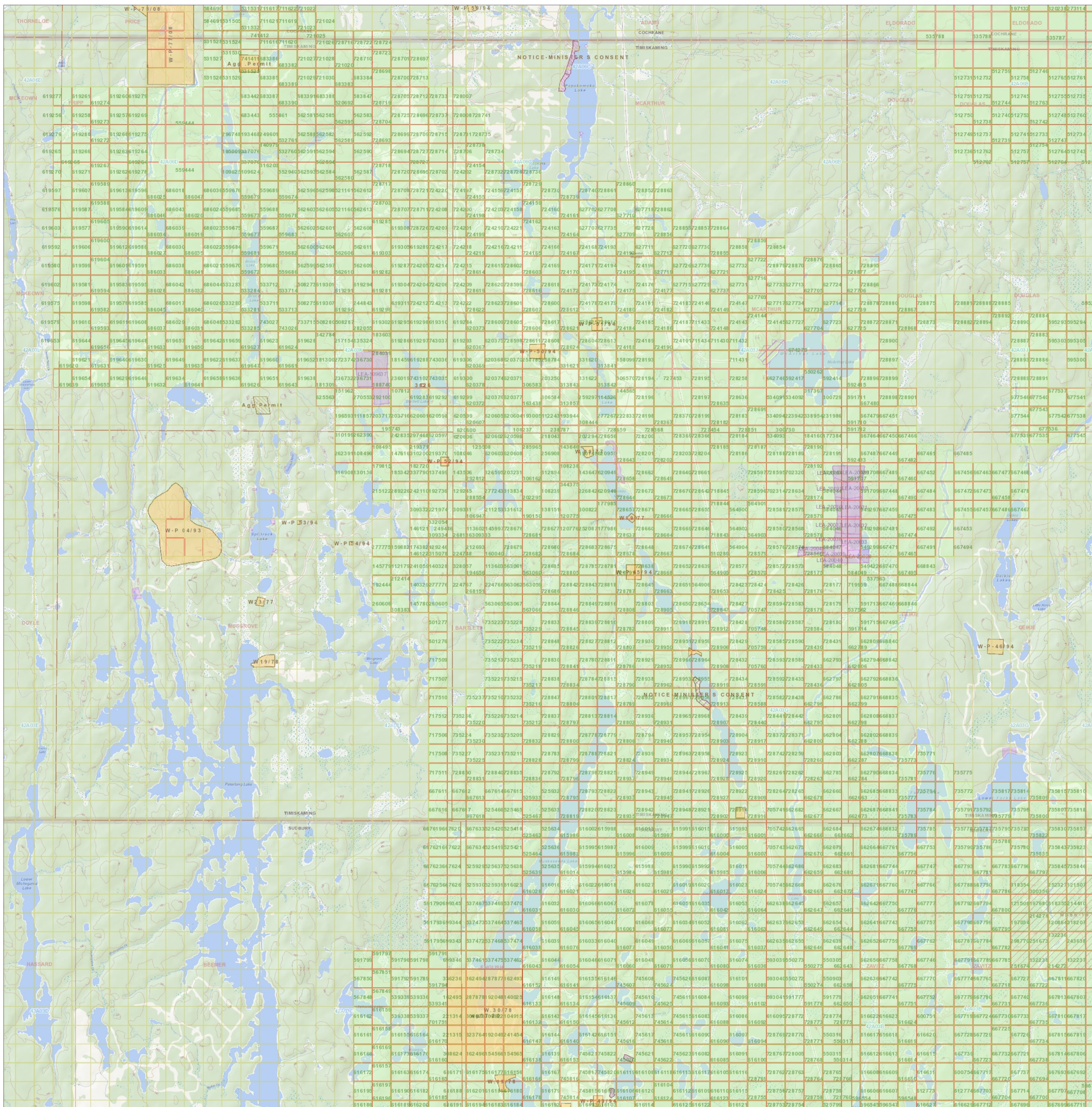
Legend

- Mining Claim
- Mining Claim
- Boundary Claim
- Legacy Claim
- Alienation**
- Withdrawal
- Notice
- NDM Administrative Boundaries**
- NDM Townships and Areas
- Geographic Lot Fabric
- Mining Division
- Land Tenure**
- Surface Rights
- Mining Rights
- Mining and Surface Rights
- Order-in-Council
- Federal Land Other

Scale: 1:36,111

0 7.22 km

Map Datum: NAD 83
Projection: Web Mercator



Those wishing to register mining claims should consult with the Provincial Mining Recorder's Office of the Northern Development and Mines (NDM) for additional information on the status of the lands shown hereon. This map is not intended for navigational, survey, or land title determination purposes as the information shown on this map is compiled from various sources.

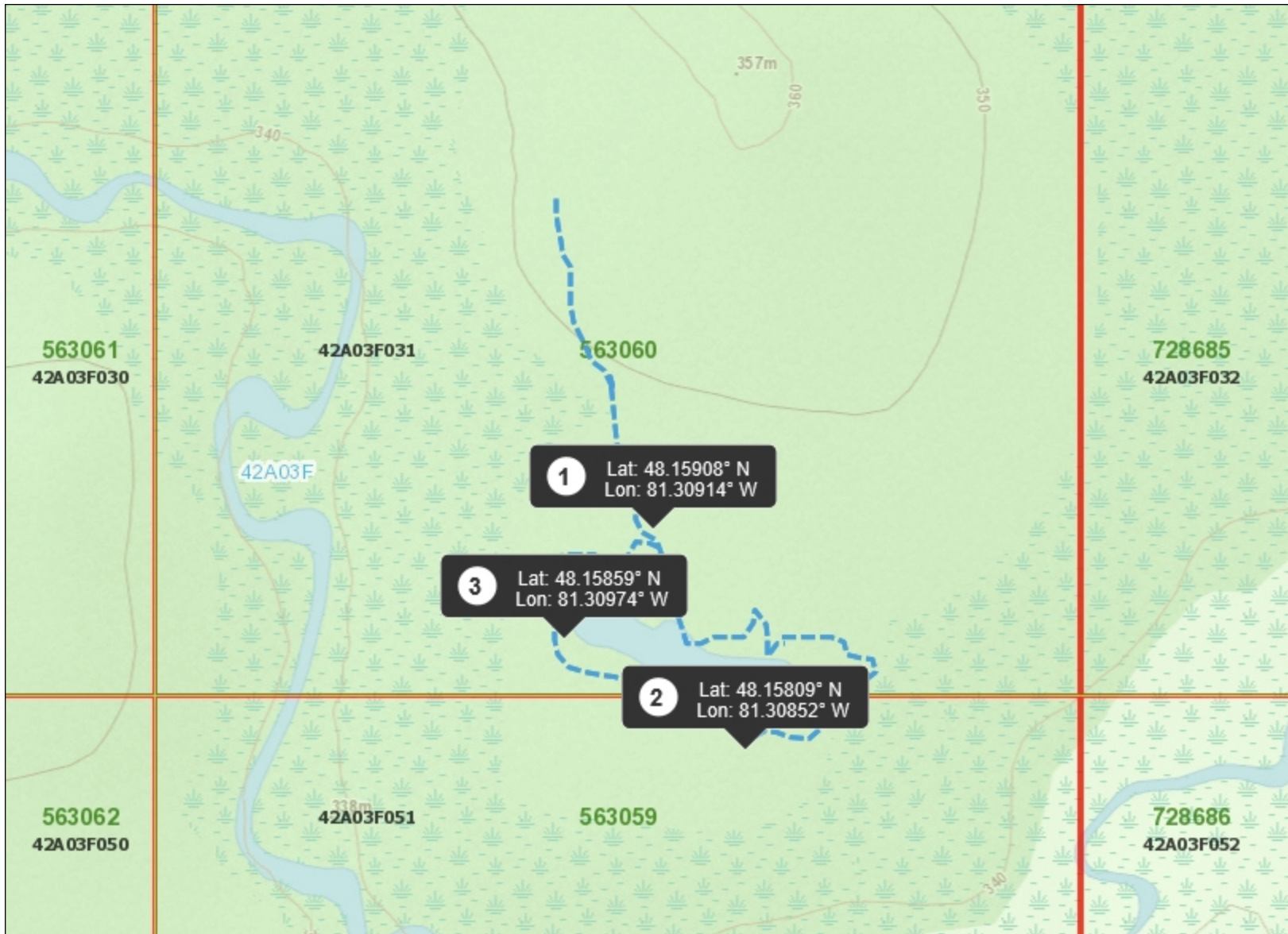
Completeness and accuracy are not guaranteed.

Additional information may also be obtained through the local Land Titles or Registry Office, or the Natural Resources and Forestry.

The information shown is derived from digital data available in the Provincial Mining Recorder's Office at the time of downloading from the Northern Development and Mines (NDM) web site.

© King's Printer for Ontario, 2022





Legend

- Provincial Grid Cell**
 - Available
 - Pending
 - Unavailable
- Mining Claim**
 - Mining Claim
 - Boundary Claim
- Alienation**
 - Withdrawal
 - Notice
- NDM Administrative Boundaries**
 - NDM Townships and Areas
 - Geographic Lot Fabric
 - UTM Grid 1K
 - UTM Grid 10K
 - Mining Division
 - Mineral Exploration and Development Region
 - CLUPA Protected Area - Far North
 - Resident Geologist District
 - Federal Land Other
 - Native Reserves
- AMIS Sites**
 - AMIS Sites
 - AMIS Features
 - Drill Hole
 - Mineral Occurrences
- MLAS Mining History**
 - Withdrawal - History
 - Notice - History
 - Mining Claim - History
 - Mining Land Tenure - History
 - Legacy Claim
- Provincial Grid**
 - Provincial Grid 250K
 - Provincial Grid 50K
 - Provincial Grid Group
- Land Tenure**
 - Surface Rights
 - Mining Rights
 - Mining and Surface Rights
 - Order-in-Council

Those wishing to register mining claims should consult with the Provincial Mining Recorders' Office of the Northern Development and Mines (NDM) for additional information on the status of the lands shown hereon. This map is not intended for navigational, survey, or land title determination purposes as the information shown on this map is compiled from various sources. Completeness and accuracy are not guaranteed. Additional information may also be obtained through the local Land Titles or Registry Office, or the Natural Resources and Forestry. The information shown is derived from digital data available in the Provincial Mining Recorders' Office at the time of downloading from the Northern Development and Mines (NDM) web site.



Imagery Copyright Notices: Ontario Ministry of Northern Development, Mines, Natural Resources and Forestry; NASA Landsat Program; First Base Solutions Inc.; Aéro-Photo (1961) Inc.; DigitalGlobe Inc.; U.S. Geological Survey.
© King's Printer for Ontario, 2022











A

542151



kages (circle)

Expl., 1C Research

1E, 1E1, 1E2, 1H, 1H2

2, 3

or

chemical

Assay



A 542151

Actlabs

kages (circle)

Expl., 1C Research

1E, 1E1, 1E2, 1H, 1H2

2, 3

or

Chemical Assay

A 542152
Actlabs
Packages (circle)
1A2, 1C Expl, 1C Research
1D Env, 1E, 1E1, 1E2, 1H, 1H2
Ultratrace 1, 2, 3
4B, 4Litho
Other _____
Analysis For _____
Geochemical Assay





HT

OLMA 433