

We are committed to providing [accessible customer service](#).

If you need accessible formats or communications supports, please [contact us](#).

Nous tenons à améliorer [l'accessibilité des services à la clientèle](#).

Si vous avez besoin de formats accessibles ou d'aide à la communication, veuillez [nous contacter](#).

December 2022



**2022 Exploration Campaign
Jackpot property
Northern Claims**

**Barbara Lake Township,
NTS sheet 42E05,
Lake Nipigon area, Ontario.**



Lake Jean, Jackpot property.



Michel Boily, PhD., P. geo.

**CERTIFICATE OF QUALIFICATIONS
DATE AND SIGNATURE**

I, Michel Boily, Ph.D., P. Geo. HEREBY CERTIFY THAT:

I am a Canadian citizen residing at 2121 de Romagne, Laval, Québec, Canada.

I obtained a PhD. in geology from the Université de Montréal in 1988.

I am a registered Professional Geologist in good standing with l'Ordre des Géologues du Québec (OGQ; permit # 1097). I have practiced the profession of geologist for the last 44 years.

I had the following work experience:

From 1986 to 1987: Research Associate in Cosmochemistry at the **University of Chicago**, Chicago, Illinois, USA.

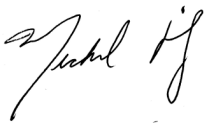
From 1988 to 1992: Researcher at **IREM-MERI/McGill University**, Montréal, Québec as a coordinator and scientific investigator in the high technology metals project undertaken in the Abitibi greenstone belt and Labrador.

From 1992 to present: Geology consultant with **Geon Ltée**, Montréal, Québec. Consultant for several mining companies. I participated, as a geochemist, in two of the most important geological and metallogenic studies accomplished by the Ministère des Richesses naturelles du Québec (MRNQ) in the James Bay area and the Far North of Québec (1998-2005). I am a specialist of granitoid-hosted precious and rare metal deposits and of the stratigraphy and geochemistry of Archean greenstone belts.

I have gathered field experience in the following regions : James Bay, Quebec; Strange Lake, Labrador/Quebec; Val d'Or and Rouyn-Noranda, Quebec; Grenville (Saguenay and Gatineau area); Cadillac, Quebec; Otish Mountains, Quebec, Lower North Shore, Quebec, Sinaloa, Sonora and Chihuahua states, Mexico, Marrakech and Ouarzazate, Morocco, San Juan, Argentina and Nicaragua

I am the author of the assessment report entitled : "Assessment Report, 2022 Exploration Campaign, Jackpot property, Northern Claims, Barbara Lake Township, NTS sheet 42E05SW, Lake Nipigon area, Ontario" written for IMAGINE LITHIUM CORP.

The Qualified Person, Michel Boily is responsible for the content of this report.



Michel Boily, PhD, P. Geo

December 10, 2022



DATE AND SIGNATURE	ii
TABLE OF CONTENTS	iii
1- SUMMARY	1
2-PROPERTY LOCATION AND DESCRIPTION	2
2.1- <i>Access</i>	2
2.2- <i>Climate</i>	6
2.3- <i>Flora and Fauna</i>	6
2.4- <i>Physiography</i>	6
2.5- <i>Local Resources and Infrastructure</i>	7
3- HISTORY OF THE JACKPOT PROPERTY	7
4- GEOLOGICAL SETTING AND MINERALIZATION	11
4.1- <i>Regional Geology</i>	11
4.2- <i>Geology of the Jackpot Property</i>	14
4.2.1- <i>Geology of Jackpot North A and B Group of Claims</i>	16
4.3- <i>Mineralization</i>	17
5- EXPLORATION	17
5.1.- <i>LIDAR Map and High-Resolution Air Photos</i>	17
5.2- <i>Field Exploration</i>	18
6- CONCLUSIONS	19
7- REFERENCES	19

LIST OF FIGURES

Figure 1. Localization map of the Jackpot property near Lake Nipigon, Ontario.	3
Figure 2. Localization of the claim cells for the Jackpot property, Nipigon Lake, Ontario.	4
Figure 3. Location of the northern Jackpot group of claims (Jackpot North A and B).	5
Figure 4. Geology of the Superior Province of Ontario showing the Archean plutonic, volcanoplutonic, metasedimentary and high-grade gneiss subprovinces. The Jackpot property is located in the metasedimentary Quetico Sub-Province.	12
Figure 5. Geology of the Quetico Sub-Province in the Lake Nipigon, Ontario. The outlines of the Jackpot property are reported on the map.	13
Figure 6. Geological map showing the sites of different rare element granitic pegmatites in the vicinity of the Jackpot property. Note the intrusion of Proterozoic mafic dykes within the Archean metasediments and the suspected presence of iron formations. From Duguet (2019).	15
Figure 7. a) Bare Earth LiDAR map of Jackpot North A claim showing the location and lithology of visited outcrops and the tracking data, b) High resolution air photo of Jackpot North A claim showing the location and lithology of visited outcrops and the tracking data.	20
Figure 8. a) Bare Earth LiDAR map of Jackpot North B claim showing the location and lithology of visited outcrops and the tracking data, b) High resolution air photo of Jackpot North B claim showing the location and lithology of visited outcrops and the tracking data.	21

LIST OF TABLE

Table 1. Table 1. Waypoints coordinates accompanied by the rock types identified, Jackpot property, Jackpot Nort A et B groups of claims.	22
--	----

APPENDIX

Appendix 1. List of claims, Jackpot property.	28
Appendix 2. Detailed summary of the exploration work completed on the Jackpot North A and B during the course of the 2022 summer period.	35

1- SUMMARY

Imagine Lithium Inc. completed an exploratory geological survey of its two northernmost groups of claims of the Jackpot property near Lake Jean during the 2022 summer period. The objective of this small campaign was to confirm the presence of granitic pegmatite dykes and granitic plutons historically investigated by Armeno Resources (Foster-Lew pegmatites). The work program was performed by Wade Kornik (P. geo) and Gerhard Jacob (P. Geo) who devoted eleven days to the exploration work distributed during the months of July, August and September 2022. The UTM coordinate system used for data collection is in NAD83; Zone 15N. The Jackpot North A and B claims did reveal outcrops of paragneiss (quartz-biotite metasediments) and of dioritic intrusive rocks within a 424 hectares area. No granitic pegmatite outcrops were found.

The Jackpot property is situated about 1 km southeast of Georgia Lake, 50 km northeast of the town of Nipigon by road and 140 km northeast of Thunder Bay. The property comprises three non-contiguous claim blocks of 299-unit cells covering 19051 ha or 190.5 km² and is 100% owned by Infinite Ore Corp. (now Imagine Lithium Inc.). The investigated claims are the Jackpot North A and Jackpot North B group of multi-cell claims having the tenure number 536783 and 536786

The Jackpot property is within the Archean Quetico subprovince of the Superior Province consisting of greenschist to amphibolite facies metasediments laid down between 2.70 and 2.69 Ga. Igneous rocks include abundant felsic and intermediate intrusions, suites of gabbroic and ultramafic rocks and late felsic intrusions designated as S-type granitoids. An important deposit type consists of late-stage Li-Be-Ta-Nb and Sn granitic pegmatites bodies.

The principal mineral constituents of the Jackpot Li-bearing granitic pegmatites are quartz, feldspar and spodumene with minor amounts of muscovite. Accessory minerals include apatite, beryl, garnet and tantalite. Spodumene varies in colour from buff white to pale apple green colour when fresh and becomes greyish-blackish or cream in colour when

altered. The granitic pegmatite dykes are poorly zoned and occasionally display fine grained sugary albite, muscovite, black tantalite and blue fluoro-apatite (aplite) at the pegmatite/wallrock contact.

Spodumene mineralization in granitic pluton or granitic pegmatite dykes was not unearthed by Imagine Lithium geologists, even if historical work has shown the presence of Li mineralization in granitic pegmatite dykes in both groups of claims (Foster and Lew pegmatites). It is thus recommended to pursue in more detail the exploration of the two blocks by focusing on specific areas where spodumene mineralization was discovered.

2-PROPERTY LOCATION AND DESCRIPTION

The core of the Jackpot property is situated about 1 km southeast of Georgia Lake, 50 km northeast of the town of Nipigon and 140 km northeast of Thunder Bay. The property is within the Thunder Bay Mining Division, Barbara Lake Township, NTS sheet 42E05. The approximate center of Infinite Ore claims is UTM 432551 E, 5461493 N, Zone 16, NAD83 or longitude/latitude 87°55'40" W and 49°18'9" N. The Jackpot property comprises three non-contiguous claim blocks of 299-unit cells (56 boundary cells, 35 multi-cells and 207 single cells) covering 19051 ha or 190.5 km², with the list presented in Appendix 1. The claims visited during the exploration campaign are attributed to tenure numbers 536783 (Jackpot North A) and 536786 (Jackpot North B). All claim units are 100% owned by Infinite Ore Corp. (Figures 1, 2 and 3). Note Mining Lease LEA-108703 at the core of the property.

There are no historic mine workings, tailings, or environmental liabilities on the property. The description of the mineral titles is based on a review of land tenure under Ontario's Ministry of Energy, Northern Development and Mines, Mining Lands Administration System (MLAS) program.

2.1- Access

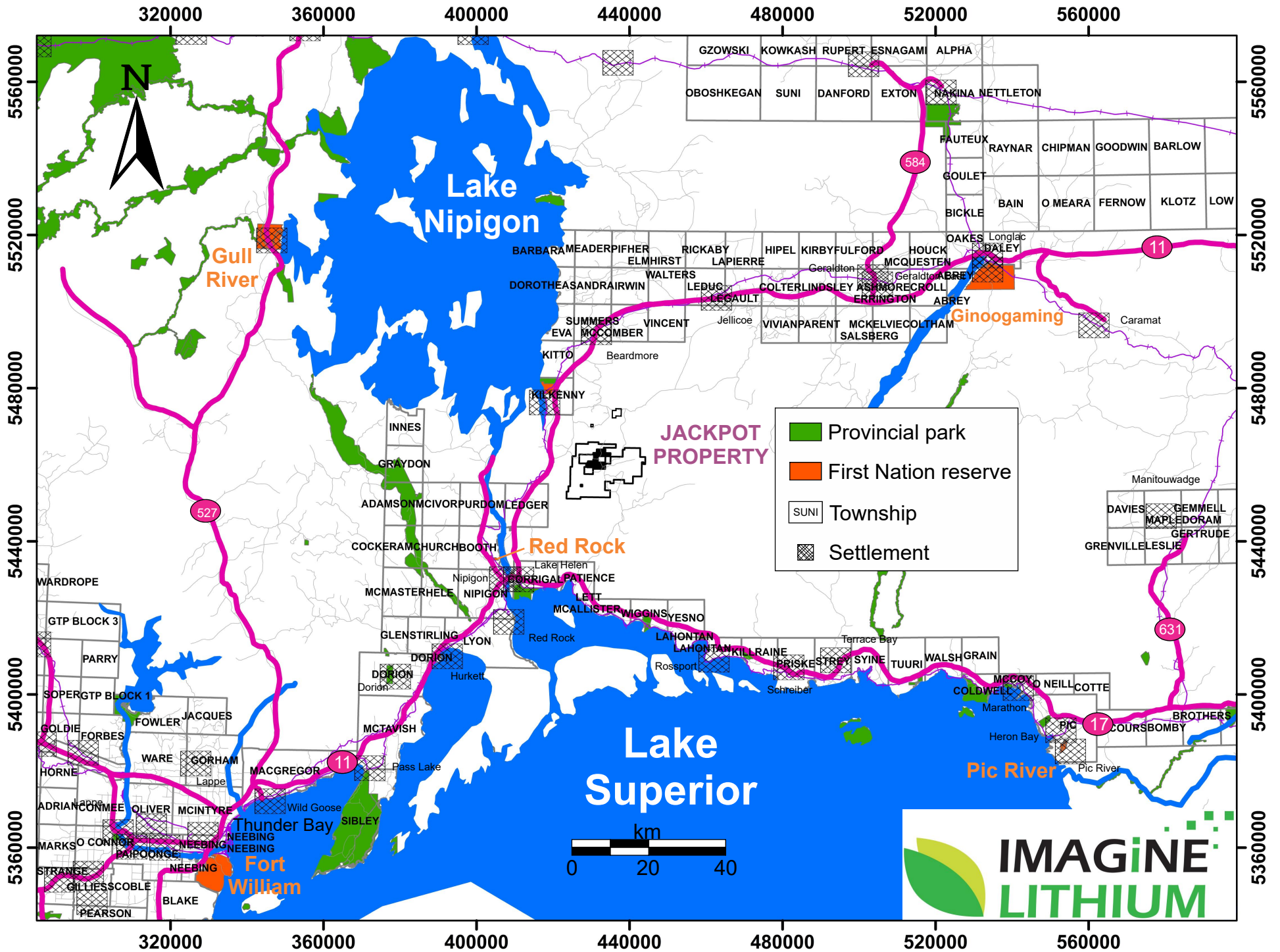


Figure 1. Localization map of the Jackpot property near Lake Nipigon, Ontario.

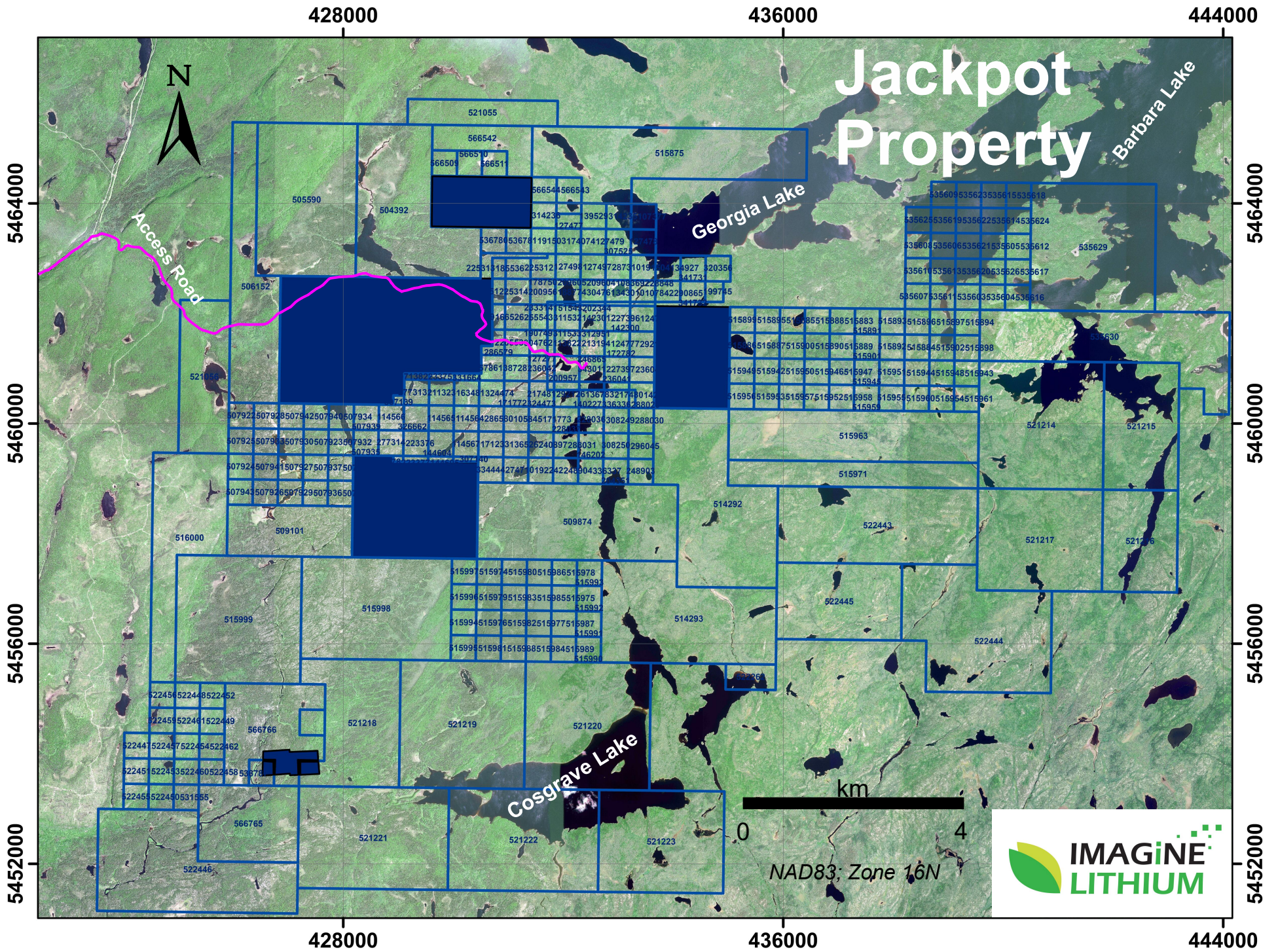


Figure 2. List of the southern Jackpot claims as of October 2022, Imagine Lithium.

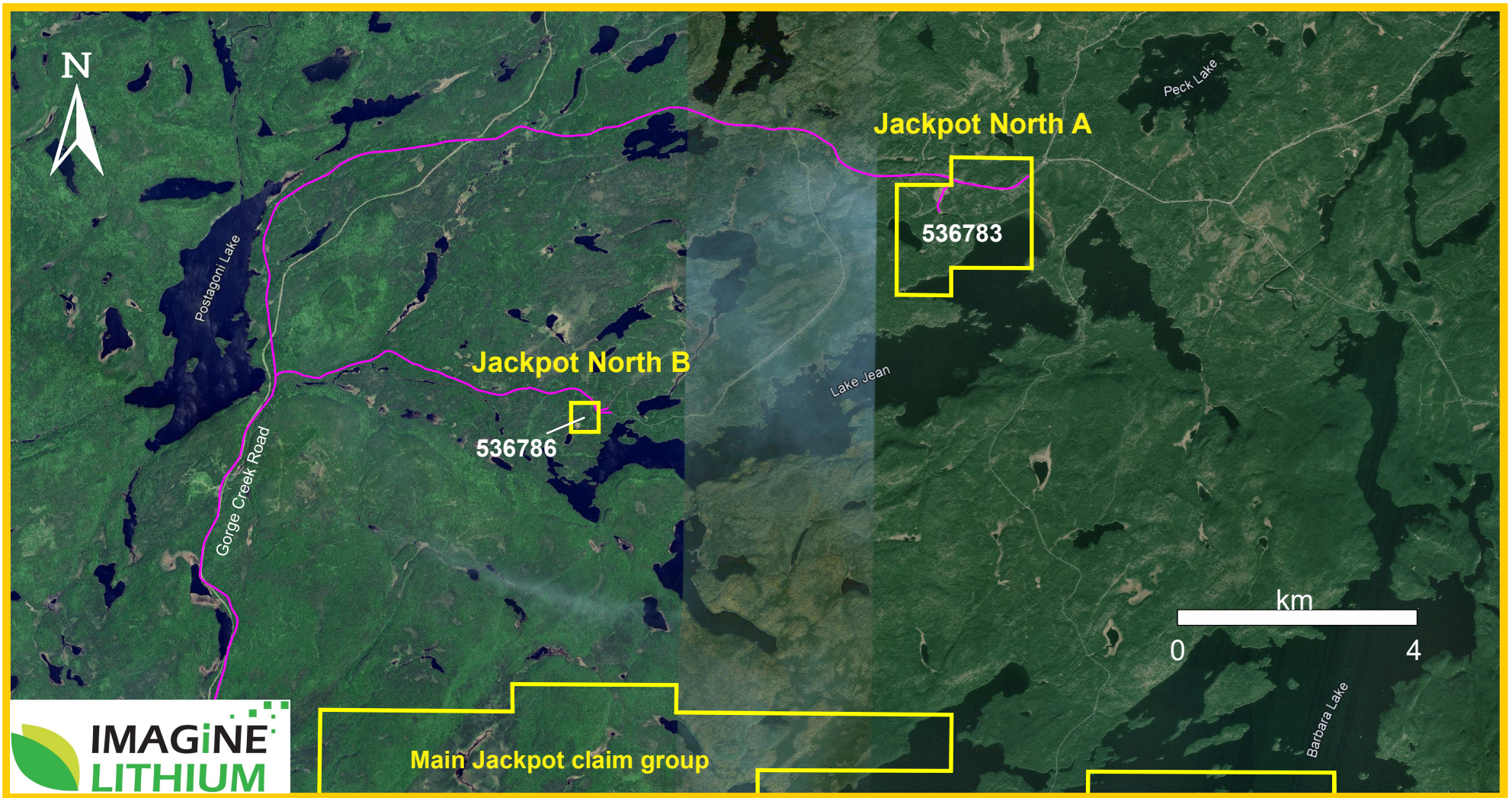


Figure 3. Location of the northern Jackpot group of claims (Jackpot North A and B).

Access to the main group of Jackpot claims is by the Gorge Creek Road branching off Highway 11, 40 km north of the town of Nipigon, Ontario. Traveling 3.8 km we reach, by ATV or a 4 x 4 truck, a bush road tracking south and southeast for 10.6 km ending at the main site where extensive drilling was performed in 2018 (Figure 1). The northern claim groups are also reached by travelling on the Gorge Creek Road from Highway 11. Instead of turning southeast at 4.5 km in direction of the main Jackpot zone, we continue N/NE then eastward on the gravel road for 30 km before reaching another small dirt road traversing the Jackpot North A claim group to the south. Jackpot North B group of claim can also be accessed by the Gorge Creek Road. However, one has to turn east for 6 km on a dirt road intersecting the main road at about 12 km from highway 11 intersection.

2.2- Climate

The climate in the area is continental and marked by cold and long winters lasting from early November to late March. Temperature in the winter months ranges between -10° and -25°C. Low average temperature reaches -16°C in January, with a high average temperature of 17°C in July. 255 cm of snow fall between October and May, whereas 944 mm of rain precipitations occur between March and November.

2.3- Flora and Fauna

The Georgia Lake forest is typical of a continental climate presenting a mixture of coniferous (pine, cedar, balsam, and black spruce) and deciduous (primarily birch and minor poplar) trees. Typical boreal fauna species include large mammals such as moose, and black bear, as well as furbearers such as beaver, otter, mink, muskrat, lynx, fox, and timber wolf. Pike, pickerel, and trout are abundant in lakes and streams.

2.4- Physiography

Areas characterized by a sedimentary substrate display mostly a low relief, whereas parts underlain by granitic rocks are rugged, with rounded hills rising to about 45 m.

Kewaneewan sheet like bodies of diabase form high near vertical cliffs (Pyke, 1965). Outcrops are abundant and in between there is a thin mantle of glacial deposits consisting of stratified accumulations of unconsolidated sand and gravel. The topography of the Georgia Lake Property is moderate, with elevations between 250 to 560 m ASL.

2.5- Local Resources and Infrastructure

The town of Beardmore (pop. 4,636) is the closest community, located 40 km north of the Jackpot Property. Nipigon (pop. 1,512), 50 km to the south of the property, has the basic supplies needed for exploration work. However, Thunder Bay (pop. 110,172) located 140 km south from the property is the largest city in northwestern Ontario, serving as a regional commercial hub. The town is a major source of workforce, contracting services, and transportation for the mining industry. Powerlines are also within a few kilometers range of the Jackpot property and there are numerous lakes, rivers, and streams from which to extract water for drilling purposes.

3-HISTORY OF THE JACKPOT PROPERTY

1955- Discovery of spodumene mineralization in the Georgia Lake granitic pegmatites. 3200 claims were staked and within a brief time numerous additional lithium deposits were located.

1955- Conwest Exploration Company Limited. Three properties were staked, including the Jackpot, Salo and Southwest properties. Conwest mapped all granitic pegmatite outcrops. 31 DDH holes for a total of 3,284 m of core were collared on the Jackpot property. Best historic Li assays were: 1.22 m @ 3.03 wt. % Li₂O, 13.72 m @ 1.31 wt. % Li₂O, 7.77 m @ 0.42 % Li₂O and 6.71 m @ 1.41 wt. % Li₂O (Conwest Exploration, 1956a, b; MNDMF 42E05SW007, 0010) .

1956- Northern Miner, March 22, 1956, p. 32. Conwest. A historic resource estimate of 1,814,369 t @ 1.09 wt. % Li₂O was calculated for the Jackpot property.*

1956- Goldale Syndicate. 12 DDHs totaling 1769 m drilled on the Jackpot A group of claims. The drilled core consisted predominantly of spodumene-bearing granitic pegmatite dykes and veins, a white granite and of metasediments (quartz-feldspar gneiss). The best drill intersection reported by Middaugh (1988) was 1.04 Li₂O (wt. %) over 9.4 m, with the remainder of the drill assays indicating an average grade of < 1.00 Li₂O (wt. %).

1957- Ontario Lithium. Additional holes on the Salo property.

1957- Stanley (1957). Ontario Lithium Co. Ltd. 3 DDH totaling 53 m of core on the Point Lithium showing. 42E05SW0013.

1965- Pye (1965). Geology and Lithium Deposits of Georgia Lake Area

District of Thunder Bay, Ontario Department of Mines.

1987- Middaugh (1987). Armeno Resources Inc. Phantom Exploration Services Ltd. Completed an 8 km magnetic and electromagnetic (VLF) survey on the Jackpot A group of claims (Foster Lew). The survey indicated weak magnetic trend associated principally with metasedimentary gneisses and a small granitic plug. Conductive trends located seem to be caused by low swampy topographic features. 42E05NW0003.

1988- Middaugh (1988a). Armeno Resources Inc. Trenching, overburden stripping and rock sampling of granite and granitic pegmatite basement. 42E05NW0005.

1988- Middaugh (1988b). Armeno Resources Inc. A geological survey was conducted on an 8 km grid. 42E05NW0002.

1989- Middaugh (1989). Armeno Resources Inc. One 49 m DDH drilled on the Northern Jackpot A group of claims (Foster Lew). The drillhole intersected a medium-grained

biotite-rich with granite invaded by cm-size granitic pegmatite veins containing spodumene. The granite is intrusive in metasediments (wacke). No analytical data is available. 42E05NW0001

2008- Breaks et al. (2008). Geology and metallogeny of the Georgia Lake rare-element pegmatite field and related S-type, peraluminous granite, Quetico Subprovince, north-central Ontario. Ontario Geological Survey.

2010- Selway (2010). 43-101 report completed on the Jackpot Lithium Property, by Caracle Creek International Consulting Inc. on behalf of Golden Dory Resources Corp.

2010- Rennick (2010). Rock Tech Resources Inc. Ground prospecting and geological work for locating pegmatite dykes and historical drill holes. Only one sample (GL-14) was collected from a pegmatite outcrop on the Foster-Lew claim block providing a Li₂O concentration of 2.26 wt. %. One 86 m deep drill hole was collared and encountered massive, fine grained, medium grey colored quartz-hornblende gneiss and narrow granitic pegmatite dykes containing quartz, feldspar and muscovite with no spodumene. 20008309.

2011- Barrie (2011). Canadian Copper Core Inc. Horizontal Aero-Magnetic Gradient & XDS VLF-EM Survey completed on 832 linear-km on an area covering most of the southern jackpot property claims. 20010257.

2016- Kornik (2016). Everton Resources Inc. Geological survey, mapping and rock sampling on claims now owned by Imagine Lithium. 38 granitic pegmatite rock samples, most spodumene bearing, were taken and submitted for laboratory analysis of lithium. 2_57197_10.

2016- Pirzada and Pleson (2016). Ultra Lithium Inc. The company detained six blocks of claims, several claims in the Jean Lake, Georgia Lake and Jackpot area now owned by Imagine Lithium. The work consisted of prospecting, mapping, surface sampling,

trenching and channel sampling of historically reported lithium pegmatite outcrops. A total of 21 grab rock samples were collected and assay results indicated ten samples showing over 1% Li₂O with 2% or more Li₂O. 2_57570_10.

2017-2018- Weicker (2019). Infinite Ore Corp. Phase 1 of diamond drill program on the lithium-bearing granitic pegmatites situated in the Main Zone. 66 DDHs consisting of 2,750 meters HQ core. A larger exploration program included geological mapping, prospecting, rock sampling, stripping of overburden, trenching, channel sampling and a high-resolution LIDAR survey. Salient assay results from the channel sampling and drilling program are presented below:

- DDH JS-18-01A: 19.80m @ 1.27 wt. % Li₂O including 7.00m @ 1.63 wt. % Li₂O;
- DDH JS-18-01B: 14.60m @ 1.05 wt. % Li₂O including 4.00m @ 2.09 wt. % Li₂O;
- DDH JS-18-02A: 17.20m @ 1.24 wt. % Li₂O including 5.00m @ 2.09 wt. % Li₂O;
- DDH JS-18-02B: 13.05m @ 1.25 wt. % Li₂O including 2.00m @ 2.63 wt. % Li₂O;
- DDH J-18-04: 7.23m @ 2.47 wt. % Li₂O including 2.00m @ 4.48 wt. %
- DDH J-18-06: 7.00m @ 1.60 wt. % Li₂O;
- DDH J-18-13: 5.00m @ 3.02 wt. % Li₂O including 1.00 m of 5.11 wt. % Li₂O;
- DDH J-18-52: 22.45m @ 1.27 wt. % Li₂O including 7.00m @ 2.27 wt. % Li₂O;
- Channel A4-CH1: 65.10m @ 1.10 wt. % Li₂O;
- Channel A6-CH1: 7.70m @ 2.42 wt. % Li₂O;
- Channel A11-CH1: 34.30m @ 1.45 wt. % Li₂O;

2019- Kornick (2019). LiDAR survey covering part of Imagine Lithium's Jackpot claims. 20000017271_01.

2021- Boily (2022). Novatema Inc. completed a very high-resolution heliborne magnetic survey on the Jackpot property along 9,489 linear km of flight lines spaced by 25m. The survey encompassed 3 blocks, respectively named North, Centre and South.

2021- Boily (2021). Field work carried out by Imagine Lithium on the Jackpot property included the collection of grab and channel samples from granitic pegmatite outcrops. Thirty-seven (37) samples returned assay values exceeding 0.5 wt. % Li₂O, ranging from 0.52 wt. to 2.95 wt. %, respectively. A northeasterly extension of the spodumene bearing granitic pegmatite dykes was clearly apparent through the assay results provided by the OUTC4 (i.e., 1.30 Li₂O (wt. %) over 12.0 m) and OUTC22 channel sample sites (i.e., 0.76 Li₂O (wt. %) over 8.50 m, 1.37 Li₂O (wt. %) over 2.00 m and 0.35 Li₂O (wt. %) over 1.00 m). Channel samples assay results from the Main Zone (i.e., channel sampling site OUTC1) yielded significant Li₂O (wt. %) intersections: 1.61 Li₂O (wt. %) over 1.15 m, 0.85 Li₂O (wt. %) over 4.00 m, 1.32 Li₂O (wt. %) over 4.00 m, 1.69 Li₂O (wt. %) over 6.50 m and 1.27 Li₂O (wt. %) over 2.50 m.

**The resources estimates presented are treated as historic information and have not been verified or relied upon for economic evaluation by the Issuer or the writer.*

4- GEOLOGICAL SETTING AND MINERALIZATION

4.1- Regional Geology

Imagine Lithium's Jackpot property is within the Quetico subprovince of the Superior Province. The former is bounded by the granite-greenstone Wabigoon Subprovince to the north and the Wawa Subprovince to the south (Williams, 1991) (Figure 4). The Quetico Subprovince consists of metasediments (wacke, iron formation, conglomerate, ultramafic wacke, and siltstone) laid down between 2.70 and 2.69 Ga. Igneous rocks include abundant felsic and intermediate intrusions and suites of gabbroic and ultramafic rocks. Late felsic intrusions are designated as S-type granitoids (White and Chapell, 1983) (Figure 5). The Quetico Subprovince underwent four deformational events (2.70-

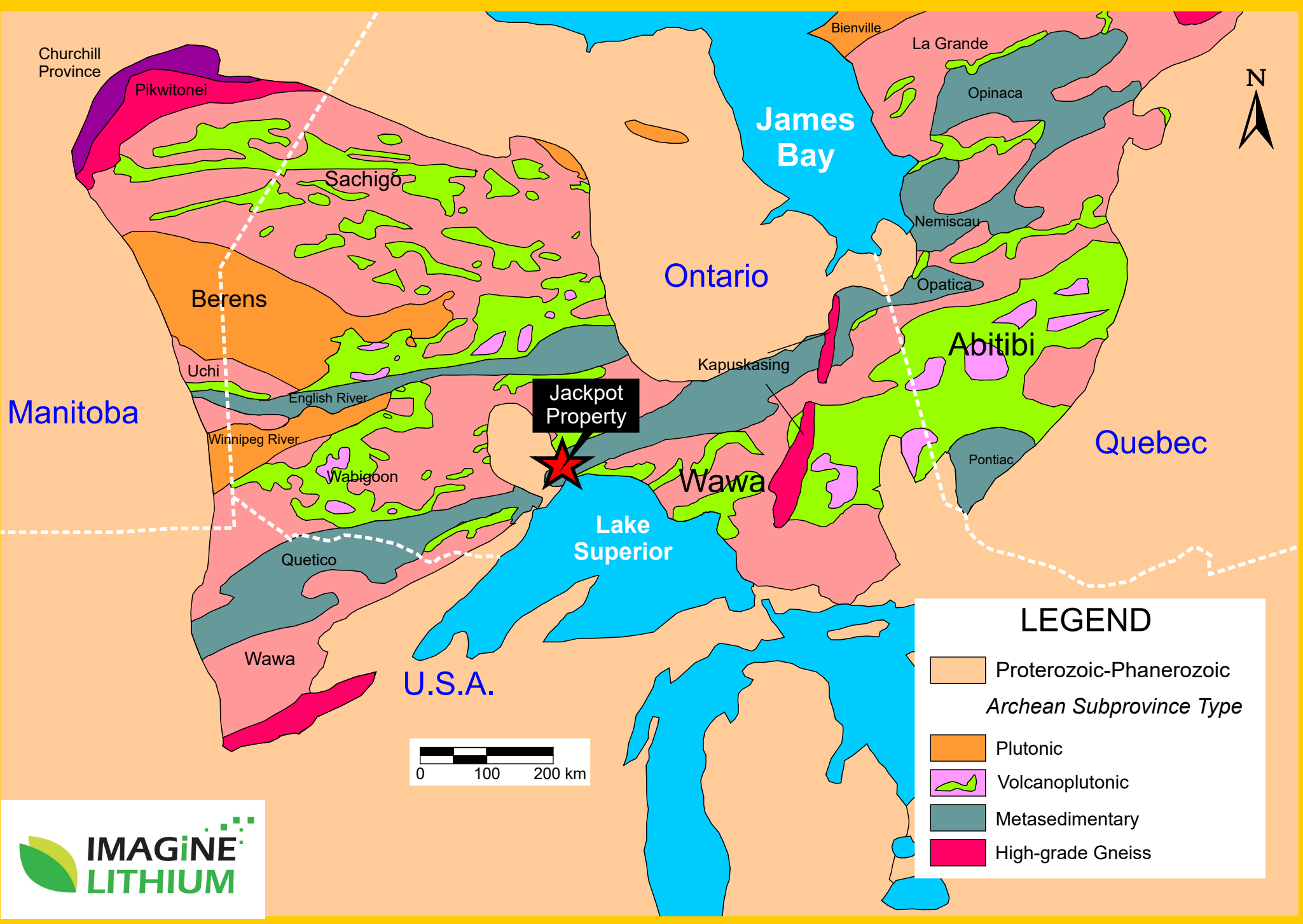


Figure 4. Geology of the Superior Province of Ontario showing the Archean plutonic, volcanoplutonic, metasedimentary and high-grade gneiss Sub-provinces. The Jackpot property is located in the metasedimentary Quetico Sub-province.

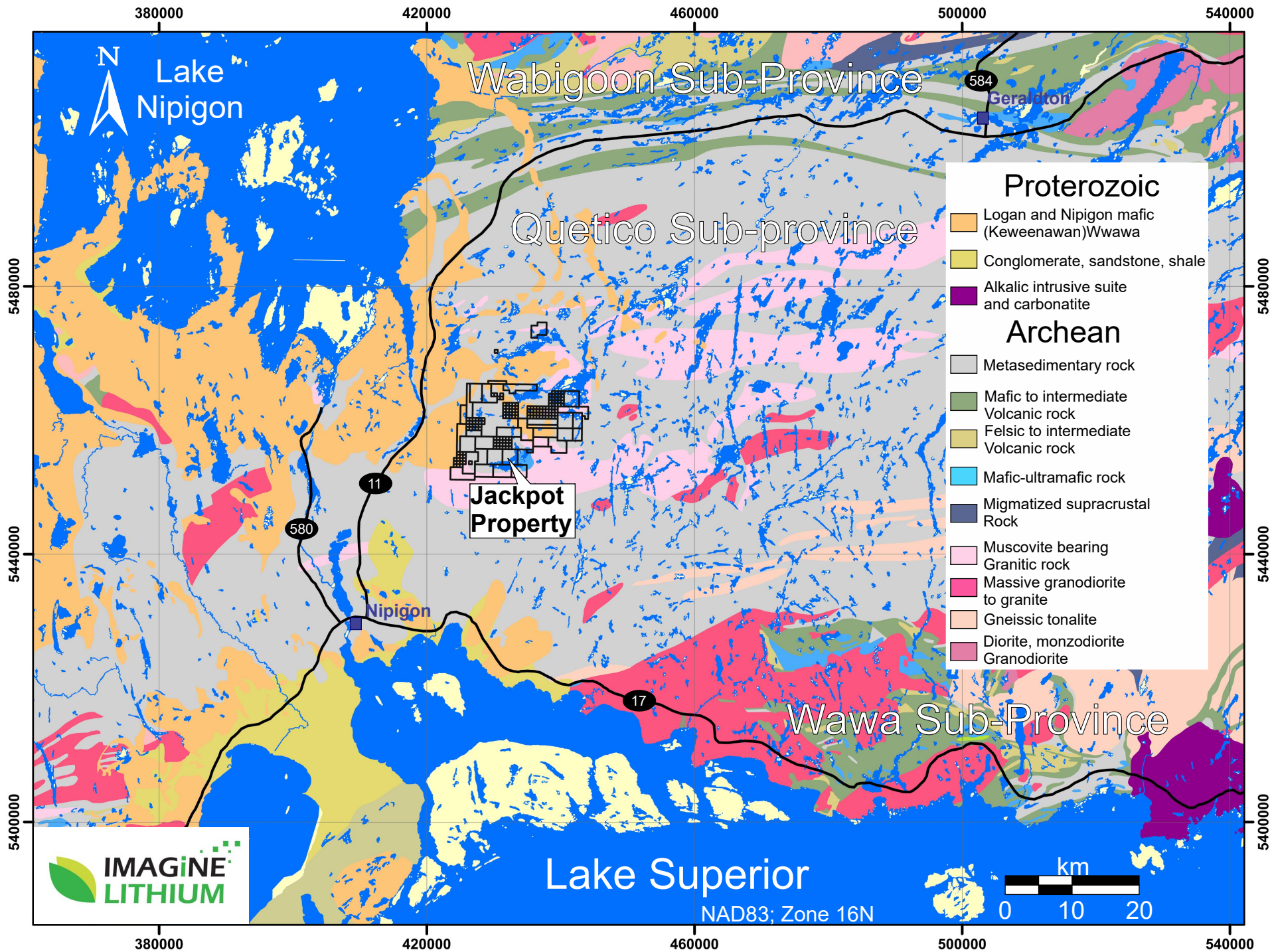


Figure 5. Geology of the Quetico Sub-Province in the Lake Nipigon area, Ontario. The outlines of the Jackpot property are reported on the map.

2.66 Ga) that involved regional shortening and dextral shearing. Metamorphism, migmatite formation and granite intrusion occurred between 2.67 and 2.65 Ga (Williams, 1991). Metamorphic grade varies from lower greenschist to amphibolite facies. An important deposit type consists of late-stage, Li-Be-Ta-Nb and Sn granitic pegmatites (Williams, 1991). The rare-element pegmatites are widely distributed in the Quetico Subprovince (Breaks et al., 2008) (Figure 6). The granitic pegmatites dykes are hosted by metasediments and by their parent granitic plutons (Pye, 1965; Breaks et al. 2003).

4.2- Geology of the Jackpot Property

The geology of the Georgia Lake area that includes the Jackpot property was thoroughly mapped and described by Pye (1965).

The oldest rocks are Archean metasediments forming a dark grey, granoblastic to porphyroblastic schist or gneiss composed of biotite-quartz-feldspar \pm garnet \pm cordierite \pm staurolite. The metasediments strike east-northeast and in general dip steeply to the north. The metasedimentary assemblage displays a distinct banded appearance due to compositional variations reflecting an original sedimentary stratification, with individual layers less than 2-3 cm to a few meters thick.

The metasediments were intruded by large masses of granitic rocks and by numerous sills and dykes of genetically related porphyry, pegmatite and aplite. The granitic rocks are equigranular occasionally porphyritic with microcline phenocrysts. They are pale-grey or pale pink in color and contain 45-65 vol.% feldspar (microcline and plagioclase), 40 vol.% quartz, and one or both of muscovite and biotite and rarely hornblende. The contacts between the equigranular granitic rocks and the metasediments are generally sharp.

Granitic pegmatites dykes and bodies are abundant close to and within the large masses of granitic rocks. A regional zoning is apparent, and a genetic association of pegmatites and granite is indicated. The pegmatites occur in two geometries: as irregular-shaped bodies and as thin dykes, sills and attenuated lenses. The irregular bodies of pegmatite are

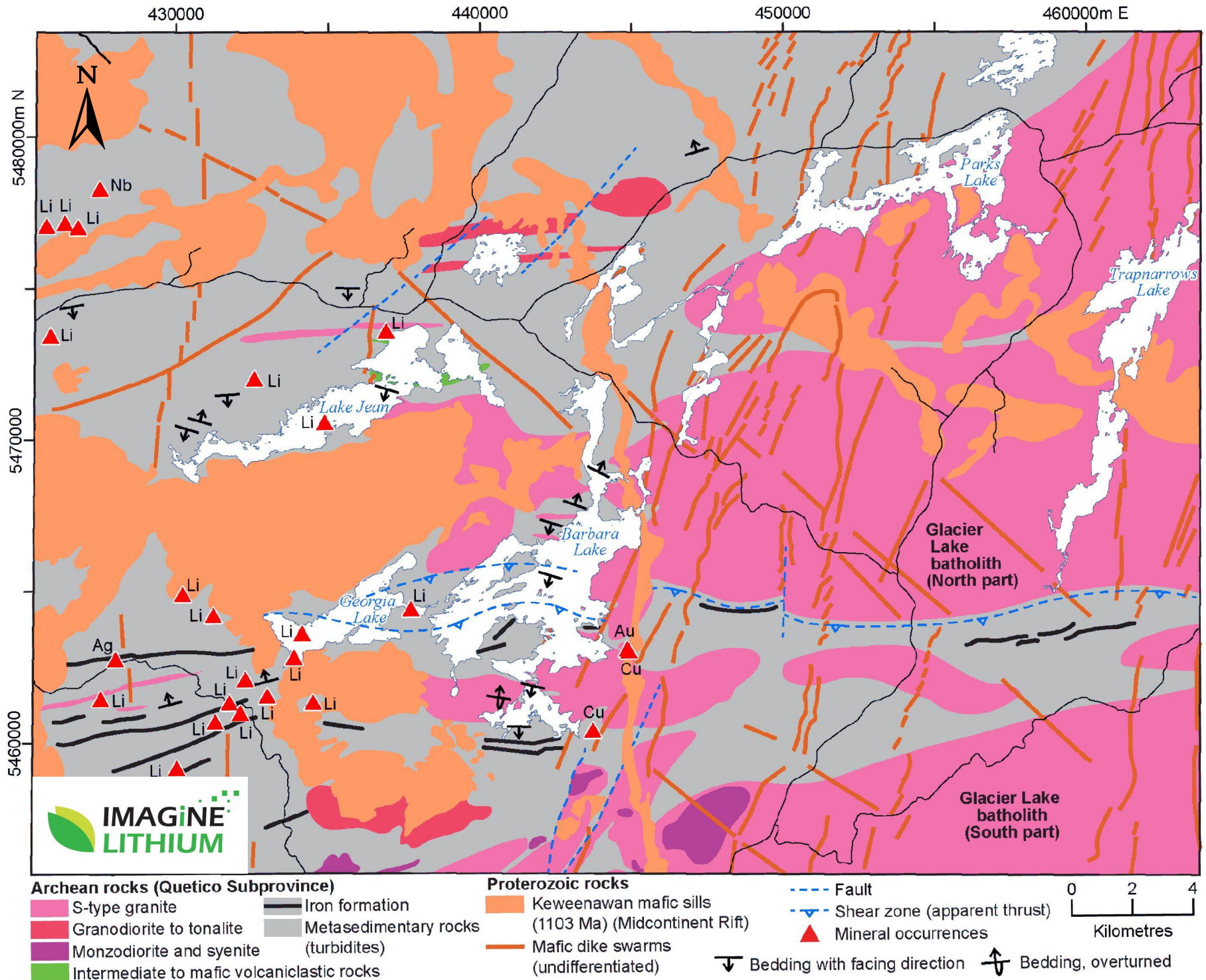


Figure 6. Geological map showing the sites of different types of rare element granitic pegmatites in the vicinity of the jackpot property. Note the intrusion of Proterozoic mafic dykes within the Archean metasediments and the suspected presence of iron formations. From Duguet (2019),

intimately associated with the granite bodies often within a few hundred feet of the contact zone. They typically are medium- to coarse-grained, up to very coarse-grained and are made up of quartz, microcline, perthite and little muscovite. These would be classified as potassic pegmatites. Accessory minerals include biotite, tourmaline, beryl and garnet.

The pegmatite dykes, sills and lenses can be subdivided into rare-element pegmatites and granitic pegmatites. The rare-element pegmatites are of economic significance, and they contain microcline or perthite, albite, quartz, muscovite, spodumene and minor amounts of beryl, columbite-tantalite, cassiterite and apatite. Some of the pegmatites are parallel to the foliation or bedding of the metasediments, whereas others occur in joints in either the metasediments or granites. Contacts are usually sharp and, except where dykes cut granitic rocks, often found to be marked by a thin border zone of aplitic or granitoid composition. A few pegmatites are internally zoned with mica-rich or tourmaline-rich rock along or close to the walls and quartz cores.

Intrusive into the Archean rocks are bodies of Proterozoic diabase sills. The largest occur as flat sheets (Logan sills), up to about 200 m in thickness, and as dykes of vertical or near-vertical attitude. Most of the dykes are related closely to the sheets and are Keweenawan in age. The gently dipping diabase sheets are dark colored and massive. They are well-jointed and most of the joints are vertical or steeply dipping. In outcrop, the diabase shows poorly formed columnar structure.

Diabase dykes are equigranular or porphyritic, with the former being more abundant. The porphyritic diabase dykes, found on the Jackpot property, are massive and medium-grained, dark-colored rocks characterized by pale-greenish yellow phenocrysts of highly altered plagioclase.

4.2.1- Geology of the Jackpot North A and B Group of Claims

The Jackpot North A and B claim groups expose principally a succession a succession of granoblastic to porphyroblastic biotite- quartz-feldspar schists (metasediments) having a banded appearance. Massive medium to coarse grained granitic rocks are pale grey or pale pink in color and consist primarily of K-feldspar, quartz and biotite. Granitic

pegmatite dykes are closely associated with the granites, with the potential economic types consist of K-feldspar, albite, quartz, muscovite and spodumene.

4.3- Mineralization

Gilmour (1955) described the mineralogy of the Jackpot spodumene-bearing granitic pegmatites. The principal mineral constituents are quartz, feldspar and spodumene with minor amounts of muscovite. Accessory minerals include apatite, beryl, garnet and tantalite. Quartz is often interstitial and occasionally intergrown with K-feldspar to form a graphic texture. The pegmatite dykes contains 5-10% fine to medium grained silver to light green muscovite occasionally forming veinlets. Crystals of feldspar and spodumene are randomly distributed arrangement. K-feldspar is white and occurs in crystals small plates or large rectangular crystals (up to 1 m-long). Albite form cm-size elongated laths. Spodumene varies in colour from buff white to pale apple green colour when fresh and becomes greyish/blackish or cream in colour when altered. Spodumene may show alteration defined by flakes of dark green, very fine-grained micas. Elongated medium to very coarse grained spodumene is up to 45 cm long and usually interstitial with quartz with intergrowth textures The granitic pegmatite dykes are poorly zoned and occasionally display fine grained sugary albite, muscovite, black tantalite and blue fluoro-apatite in aplite at the pegmatite wallrock contact. Coarse-grained, spodumene-bearing zone at may occur at the core of the dykes.

Pyke (1965) identified two main granitic pegmatite dykes at the core of the Jackpot property. Historical drilling confirmed the presence of a near the surface dyke (No. 1) with the second (No. 2) lying beneath. The No. 1 pegmatite is a flat-lying body variably exposed at surface, with thicknesses ranging from 6 to 9 m. The lower No. 2 pegmatite strikes at N65° degrees east and dips 15°- 25° NW.

5- EXPLORATION

5.1.- LIDAR Map and High-Resolution Air Photos

The exploration campaign made use of the acquisition of a LIDAR map from Airborne Imaging Inc. covering the entirety of the Jackpot property. The map of the 2 northern blocks of claims allowed a better understanding of the topography while helping to identify accessible areas and zones of possible outcropping. A mosaic of color air photos having a horizontal resolution of 10 cm was also produced.

Airborne Imagine used a fixed wing aircraft equipped with a Riegl VQ 1560ii LiDAR system. The plane flew at an altitude of 1,200 m at a 296 km/h covering an area of 192 km². The data was divided into 1000m x 1000m tiles following the UTM Grid System. Airborne Imaging performs a complete calibration on every LiDAR acquisition flight. The data is first produced with its predetermined boresight values and then the calibration refined by applying corrections to the attitude of the aircraft (roll, pitch and heading) and fluctuations if necessary. To statistically quantify the accuracy, the company compares the LiDAR elevations with independently surveyed ground points. A GPS mounted truck collects data while driving on an open road. The kinematic positions on the road are post-processed from a nearby base station to provide ground truth points. The Horizontal Accuracy at 95% or 2σ is 35 cm, whereas the Fundamental Vertical Accuracy (on flat hard surfaces) at 95% or 2σ is 15 cm.

The LiDAR imaging revealed a relatively flat area in the northern portion of the Jackpot North A group of claims with a crude NE/SW topographic orientation, whereas in the southwestern part near Jean Lake, the topography is more developed. The Jackpot North B terrane shows a bit more topographic variation with again a NE/SW trend and some small, dispersed mounds.

5.2- Field Exploration

The two groups of claims north of the core of the Jackpot property regions (i.e., tenure numbers 536783 and 536786) were visited by Imagine Lithium geologists Wade Kornik and Gerhard Jacob, both professional geologists, during the months of July, August and September 2022. In total the geologists devoted nine days to the Jackpot North A et B

claim groups. The visit consisted of exploring areas with potential outcroppings by walking through the bush or along dirt roads to unearth granitic pegmatite dykes and bodies. Access to the sites were by 4 x 4 vehicles and dirt/gravel roads connected to Highway 11. Inspection of both sites lead to the identification of metasedimentary outcrops (quartz-biotite paragneiss) and dioritic intrusive rocks (Figures 7, 8). The tracking data with the waypoint stations are reported in the figures. Table 1 presents the UTM coordinates (NAD83; Zone 15N) where outcrops were encountered. No granitic pegmatite dykes were seen, and no grab rock sample was collected. A summary of the work accomplished on both claim groups is included in Appendix 2.

8- CONCLUSIONS

The two northernmost groups of the Jackpot property were surveyed during the 2002 summer period to identified granitic pegmatite dykes and bodies. The exploratory investigation found no such lithologies.

Despite the absence of observed spodumene mineralization in granitic pluton or granitic pegmatite dykes by Imagine Lithium geologists, historical work has shown the presence of Li mineralization in granitic pegmatite dykes in both groups of claims (Foster and Lew pegmatites). It is thus recommended to pursue in more detail the exploration of the two blocks by focusing on specific areas where spodumene mineralization was discovered.

9- REFERENCES

Barrie, C. 2011. Operations Report for Canadian Copper Core Inc. Horizontal Aero-Magnetic Gradient & XDS VLF-EM Survey, Jackpot I and Jackpot II Projects, Thunder Bay Area, ON. 20010257; 45 pp.

Boily, M. 2021a. Assessment Report. 2021 Exploration Campaign, Jackpot property, Barbara Lake Township, NTS sheet 42E05SW, Lake Nipigon area, Ontario. Imagine Lithium Corp.; 53 pp.

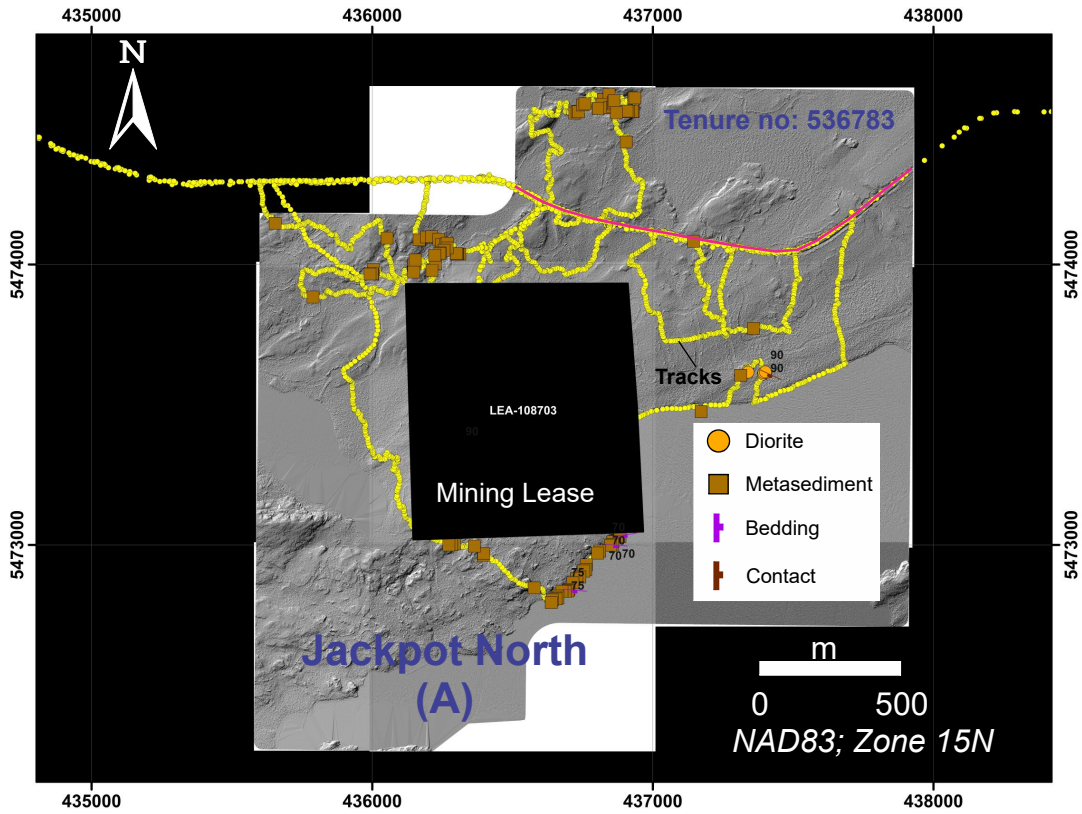


Figure 7a. Bare Earth LiDAR map of Jackpot North A claim showing the location and lithology of visited outcrops and the tracking data.

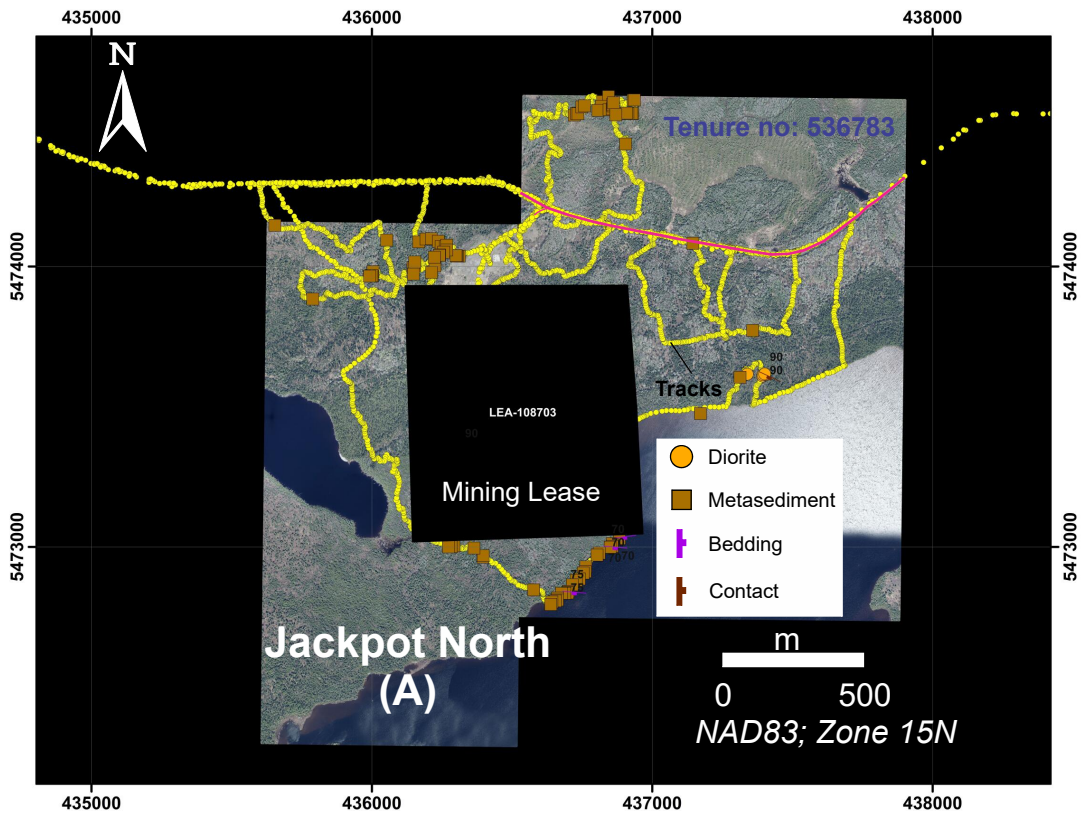


Figure 7b. High resolution air photo of Jackpot North A claim showing the location and lithology of visited outcrops and the tracking data.

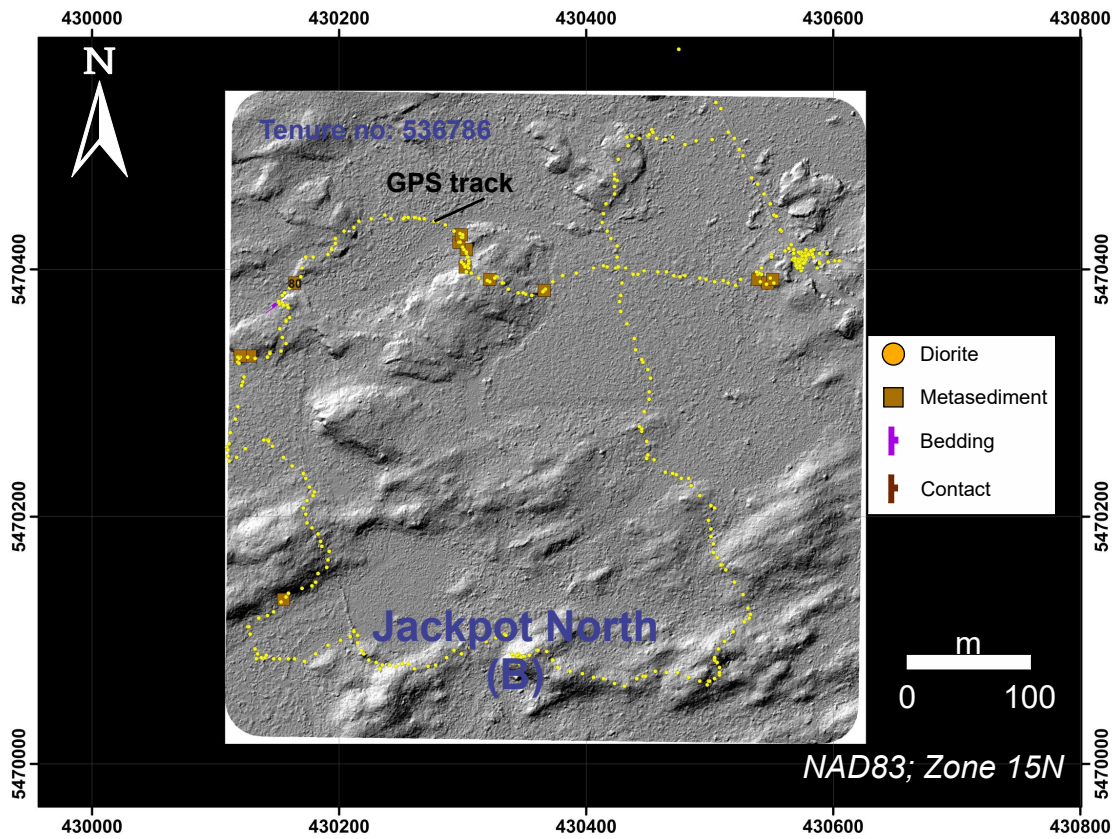


Figure 8a. Bare Earth LiDAR map of Jackpot North B claim showing the location and lithology of visited outcrops and the tracking data.

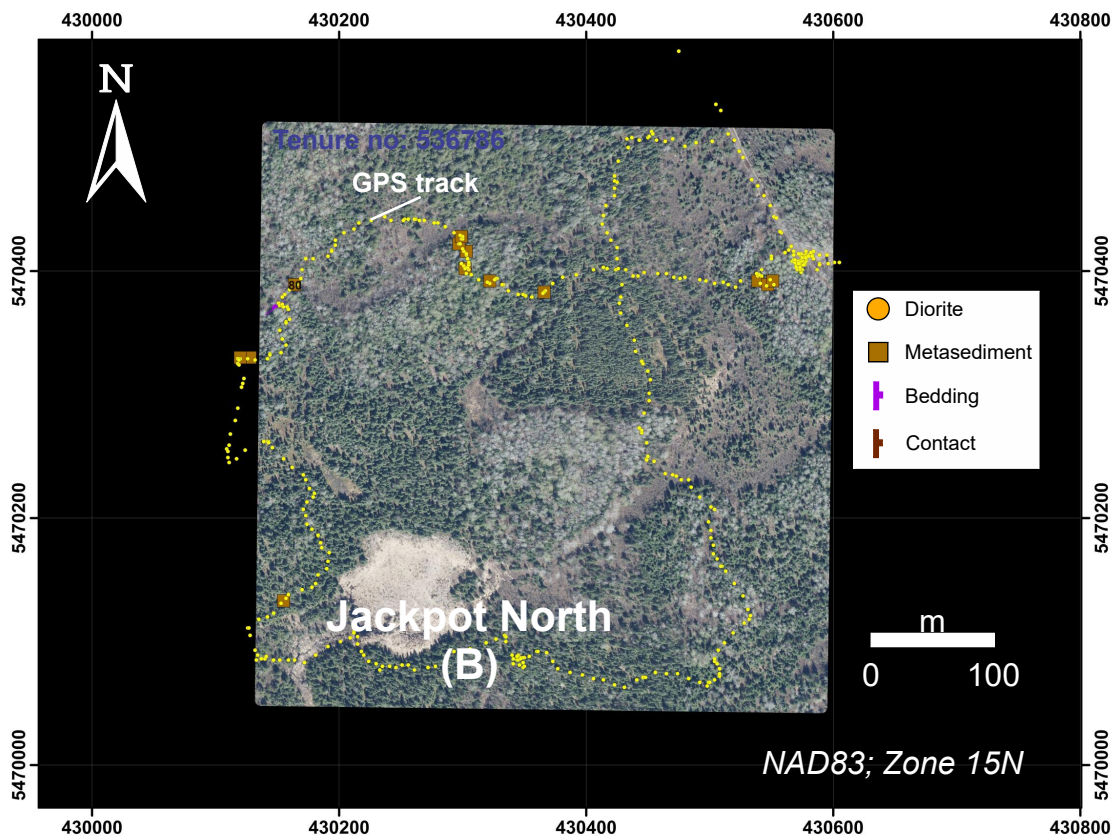


Figure 8b. High resolution air photo of Jackpot North B claim showing the location and lithology of visited outcrops and the tracking data.

Table 1. Waypoints coordinates accompanied by the rock types identified, Jackpot property, Jackpot Nort A et B groups of claims.

Easting	Northing *	Elevation (m)	Rock Type
Jackpot North A			
435654	5474147	467	Metasediment
435789	5473884	451	Metasediment
435992	5473966	454	Metasediment
436000	5473967	455	Metasediment
436002	5473966	456	Metasediment
436004	5473982	456	Metasediment
436053	5474094	462	Metasediment
436146	5473996	457	Metasediment
436147	5473996	457	Metasediment
436148	5473973	455	Metasediment
436153	5474004	455	Metasediment
436153	5474016	457	Metasediment
436167	5474088	459	Metasediment
436193	5474098	457	Metasediment
436212	5474099	454	Metasediment
436213	5473979	452	Metasediment
436221	5473994	452	Feldspar Porphyry
436223	5474033	456	Metasediment
436225	5474003	454	Metasediment
436237	5474090	455	Metasediment
436241	5474040	456	Metasediment
436242	5474041	458	Metasediment
436247	5474071	455	Metasediment
436252	5474051	454	Metasediment
436256	5474051	457	Metasediment
436262	5474071	453	Metasediment
436267	5474076	455	Metasediment
436267	5474059	454	Metasediment
436273	5473000	432	Metasediment
436273	5473000	432	Metasediment
436283	5473001	429	Metasediment
436283	5473001	429	Metasediment
436293	5473004	427	Metasediment
436293	5473004	427	Metasediment
436300	5474039	452	Metasediment
436303	5474037	452	Metasediment
436305	5474037	452	Metasediment
436312	5474037	451	Metasediment
436364	5473638	438	Diorite
436364	5472996	428	Metasediment
436364	5472996	428	Metasediment
436377	5473641	436	Diorite
436396	5472964	427	Metasediment
436396	5472964	427	Metasediment
436397	5472969	428	Metasediment
436397	5472969	428	Metasediment
436577	5472847	420	Metasediment
436577	5472847	420	Metasediment
436638	5472795	415	Metasediment
436638	5472795	415	Metasediment
436642	5472804	414	Metasediment
436642	5472804	414	Metasediment
436655	5472808	415	Metasediment
436655	5472808	415	Metasediment
436662	5472818	414	Metasediment

Table 1. Waypoints coordinates accompanied by the rock types identified, Jackpot property, Jackpot Nort A et B groups of claims.

Easting	Northing *	Elevation (m)	Rock Type
436662	5472818	414	Metasediment
436662	5472811	415	Metasediment
436662	5472811	415	Metasediment
436676	5472835	414	Metasediment
436676	5472835	414	Metasediment
436688	5472835	414	Metasediment
436688	5472835	414	Metasediment
436698	5472837	415	Metasediment
436698	5472837	415	Metasediment
436698	5472836	415	Metasediment
436698	5472836	415	Metasediment
436701	5472841	415	Metasediment
436701	5472841	415	Metasediment
436715	5472865	416	Metasediment
436715	5472865	416	Metasediment
436722	5474540	450	Metasediment
436729	5472881	415	Metasediment
436729	5472881	415	Metasediment
436730	5474546	454	Metasediment
436735	5474545	450	Metasediment
436740	5472886	415	Metasediment
436740	5472886	415	Metasediment
436749	5474569	449	Metasediment
436754	5472907	415	Metasediment
436754	5472907	415	Metasediment
436758	5474573	451	Metasediment
436761	5472912	412	Metasediment
436761	5472912	412	Metasediment
436763	5472929	415	Metasediment
436763	5472929	415	Metasediment
436803	5472971	415	Metasediment
436803	5472971	415	Metasediment
436806	5474557	444	Metasediment
436811	5472978	416	Metasediment
436811	5472978	416	Metasediment
436819	5474571	444	Metasediment
436823	5474588	445	Metasediment
436844	5474606	448	Metasediment
436846	5474559	442	Metasediment
436850	5472999	416	Metasediment
436850	5472999	416	Metasediment
436857	5473002	415	Metasediment
436857	5473002	415	Metasediment
436857	5474562	442	Metasediment
436858	5473012	415	Metasediment
436858	5473012	415	Metasediment
436859	5474579	444	Metasediment
436860	5474573	441	Metasediment
436862	5474584	444	Metasediment
436870	5474541	445	Metasediment
436883	5473030	415	Metasediment
436883	5473030	415	Metasediment
436905	5474437	438	Metasediment
436908	5474547	444	Metasediment
436913	5474545	444	Metasediment
436927	5474546	446	Metasediment
436930	5474545	446	Metasediment
436932	5474593	442	Metasediment

Table 1. Waypoints coordinates accompanied by the rock types identified, Jackpot property, Jackpot Nort A et B groups of claims.

Easting	Northing *	Elevation (m)	Rock Type
436936	5474594	440	Metasediment
437145	5474083	434	Metasediment
437145	5474083	434	Metasediment
437172	5473476	423	Metasediment
437172	5473476	423	Metasediment
437312	5473605	425	Diorite
437312	5473605	425	Diorite
437313	5473605	426	Metasediment
437313	5473605	426	Metasediment
437339	5473616	424	Diorite
437339	5473616	424	Diorite
437358	5473772	435	Metasediment
437394	5473609	422	Diorite
437394	5473609	422	Diorite
437396	5473614	420	Diorite
437396	5473614	420	Diorite
437401	5473617	421	Diorite
437401	5473617	421	Diorite
437401	5473613	421	Diorite
437401	5473613	421	Diorite
Jackpot North B			
430120	5470330	428	Metasediment
430128	5470330	429	Metasediment
430155	5470133	428	Metasediment
430164	5470389	433	Metasediment
430297	5470422	435	Metasediment
430299	5470428	433	Metasediment
430302	5470402	437	Metasediment
430303	5470416	433	Metasediment
430322	5470392	437	Metasediment
430366	5470383	434	Metasediment
430539	5470392	435	Metasediment
430547	5470389	436	Metasediment
430551	5470392	438	Metasediment

*NAD83; Zone 15N

Boily, M. 2021b. Assessment Report. High-resolution heliborne MAG survey on the Jackpot property, Barbara Lake Township, Lake Nipigon area, Ontario, NTS sheet 42E05SW. Imagine Lithium Corp.; 31 pp.

Breaks, F.W., Selway, J.B. and Tindle, A.G. 2003. Fertile peraluminous granites and related rare element mineralization in pegmatites, Superior province, northwest and northeast Ontario: Operation Treasure Hunt. Ontario Geological Survey, Open File Report 6099; 179 pp.

Breaks, F.W., Selway, J.B., Tindle, A.G. 2008. The Georgia Lake rare-element pegmatite field and related S-type, peraluminous granite, Quetico Subprovince, north-central Ontario. Ontario Geological Survey, Open File Report 6199; 176 pp.

Conwest Exploration. 1956a. Diamond Drill log. MNDMF 42E05SW007; 2 pp.

Conwest Exploration. 1956b. Diamond Drill log. MNDMF 42E05SW010; 48 pp.

Duguet, M. 2019. Project NW-19-003. Archean and Proterozoic Geology of the Georgia Lake Area, Quetico Subprovince, Ontario, In Ontario Geological Survey Open File Report 6360, Summary of Field Work and Other Activities (2019). Edited by Easton, R.M., Préfontaine, S., Bajc, A.F., Hamilton, S.M., Rainsford, D.R.B., Burnham, O.M.; p. 12-1 – 12-9.

Gilmour, P. 1955. Geological report. Ontario Lithium Company Ltd, Georgia Lake property. Assessment report 42E05SW0026; 29 pp.

Goldale Syndicate. 1956. DDH logs, Lake Jean Area, 42E05NW0010;30 pp.

Kornik, W. 2016. 2016 Geological Report, Barbara Lake Area, Claim Group 4257865, 4257866, 4257868, 4257869 for Everton Resources, 2_57197_10; 94 pp.

Kornik, W. 2019. 2019 LIDAR and Geological Report, Barbara Lake Area, 20000017271_01; 37 pp.

Middaugh, R.D. 1989a. DDH log, Lake Jean Area, Armono Resources Inc., 42E05NW0001; 4 pp.

Middaugh, R.D. 1988a. Report of Work, Lake Jean Area, 42E05NW0005; 4 pp.

Middaugh, R.D. 1988n. Geological Survey, Foster-Lew Project, Phantom Exploration Services Ltd, 42E05NW0005; 15 pp.

Middaugh, R.D. 1987. Proton Magnetometer and VLF Electromagnetic Surveys, Foster-Lew Project, NTS 42E05, Phantom Exploration Services Ltd., 42E05NW0003; 15 pp.

Mouge, P. 2021. Technical Report, Novatem G2. Very high resolution heliborne magnetic survey on the Jackpot property, On. For Infinite Ore Corp; 28 pp.

Pirzada, A., Pleson, A. J. 2017. Assessment Work Report On the Georgia Lake Lithium Pegmatite Property, Thunder Bay Mining District, Northwestern Ontario, Canada, Claims, 4266301, 4266302, 4266303, 4266304, 4266305, 4266306, 4266308, 4266309, 4266310, 4266312, 4266313, 4266314, 4266315, 4266316, 4266316, 4266317, and 4266318, for Ultra Lithium Inc., 2_57570_10; 70 pp.

Pye, E.G., 1965. Geology and Lithium Deposits of Georgia Lake Area District of Thunder Bay Ontario Department of Mines, Geological Report No. 31.

Rennick, M.W. 2010. James bay Midarctic Development Inc. report on Exploration Work 2009, Georgia Lake Lithium and Rare-Earths Project, Georgia Lake, Northwestern Ontario, Canada, N.T.S. References: 42-E-4, 42-E-5, 52-H-1, 52-H-8. 20008309; 161 pp.

Selway, J.B., Breaks, F.W., Tindle, A.G. 2005. A review of rare-element (Li-Cs-Ta) pegmatite exploration techniques for the Superior Province, Canada and large worldwide Tantalum deposits, *Exploration and Mining Geology*, v. 14; p. 1-30.

Selway, J.B. 2010. Property Report on the Jackpot Lithium Property, 43-101 report completed by Caracle Creek International Consulting Inc., on behalf of Golden Dory Resources Corp., Gander, Newfoundland, and Labrador.

Stanley, H. 1957. DDH logs, Barbara Lake area, 42E05SW0013; 9 pp.

Weicker, RFW. 2019. Assessment Report on Aerial Survey (LIDAR) conducted by RME Geomatics on the Jackpot Property, Thunder Bay Mining Division, Barbara Lake Township for Infinite Lithium Corp. ; 46 pp.

White, A.J.R., Chappell, B.W. 1983. Granitoid types and their distribution in the Lachlan Fold Belt, southeastern Australia, In *Circum-Pacific Plutonic Terranes*, Geological Society of America, Memoir 159; p. 21-34.

Williams, H.R. 1991. Quetico Subprovince, In *Geology of Ontario*, Ontario Geological Survey, Special Volume 4; p.383-404

Appendix 1. List of claims, Jackpot property

TENURE_NUM	PROV_CELL_GRID	TYPE	EXPIRATION_DATE	HOLDER	LEGACY_CLAIM	TOWNSHIP
105845	42E05D209	Single Cell Mining Claim	8/9/2023 0:00	(100 %) Imagine Lithium Inc.	4257868	BARBARA LAKE AREA
107377	42E05D054	Single Cell Mining Claim	7/17/2023 0:00	(100 %) Imagine Lithium Inc.	4257866	BARBARA LAKE AREA
108369	42E05D113	Boundary Cell Mining Claim	7/17/2023 0:00	(100 %) Imagine Lithium Inc.	4257866	BARBARA LAKE AREA
113822	42E05D151	Boundary Cell Mining Claim	6/9/2025 0:00	(100 %) Imagine Lithium Inc.	4245840	BARBARA LAKE AREA
114564	42E05D207	Single Cell Mining Claim	8/9/2023 0:00	(100 %) Imagine Lithium Inc.	4273501	BARBARA LAKE AREA
114565	42E05D206	Single Cell Mining Claim	8/9/2023 0:00	(100 %) Imagine Lithium Inc.	4273501	BARBARA LAKE AREA
114566	42E05D204	Single Cell Mining Claim	8/9/2023 0:00	(100 %) Imagine Lithium Inc.	4273501	BARBARA LAKE AREA
114567	42E05D227	Single Cell Mining Claim	8/9/2023 0:00	(100 %) Imagine Lithium Inc.	4273501	BARBARA LAKE AREA
124776	42E05D134	Single Cell Mining Claim	7/17/2023 0:00	(100 %) Imagine Lithium Inc.	4257869	BARBARA LAKE AREA
124777	42E05D153	Boundary Cell Mining Claim	7/17/2023 0:00	(100 %) Imagine Lithium Inc.	4257869	BARBARA LAKE AREA
127277	42E05D170	Boundary Cell Mining Claim	7/17/2023 0:00	(100 %) Imagine Lithium Inc.	4257868	BARBARA LAKE AREA
127477	42E05D051	Boundary Cell Mining Claim	7/17/2023 0:00	(100 %) Imagine Lithium Inc.	4257866	BARBARA LAKE AREA
127478	42E05D074	Single Cell Mining Claim	7/17/2023 0:00	(100 %) Imagine Lithium Inc.	4257866	BARBARA LAKE AREA
127479	42E05D072	Single Cell Mining Claim	7/17/2023 0:00	(100 %) Imagine Lithium Inc.	4257866	BARBARA LAKE AREA
127497	42E05D092	Single Cell Mining Claim	7/17/2023 0:00	(100 %) Imagine Lithium Inc.	4257866	BARBARA LAKE AREA
127498	42E05D091	Single Cell Mining Claim	7/17/2023 0:00	(100 %) Imagine Lithium Inc.	4257866	BARBARA LAKE AREA
134927	42E05D095	Single Cell Mining Claim	8/9/2023 0:00	(100 %) Imagine Lithium Inc.	4273500	BARBARA LAKE AREA
136526	42E05D229	Single Cell Mining Claim	8/9/2023 0:00	(100 %) Imagine Lithium Inc.	4273502	BARBARA LAKE AREA
136783	42E05D192	Boundary Cell Mining Claim	7/17/2023 0:00	(100 %) Imagine Lithium Inc.	4257869	BARBARA LAKE AREA
138728	42E05D169	Single Cell Mining Claim	7/17/2023 0:00	(100 %) Imagine Lithium Inc.	4257868	BARBARA LAKE AREA
139529	42E05D052	Single Cell Mining Claim	7/17/2023 0:00	(100 %) Imagine Lithium Inc.	4257866	BARBARA LAKE AREA
140227	42E05D192	Boundary Cell Mining Claim	8/9/2023 0:00	(100 %) Imagine Lithium Inc.	4273503	BARBARA LAKE AREA
142300	42E05D133	Boundary Cell Mining Claim	7/17/2023 0:00	(100 %) Imagine Lithium Inc.	4257869	BARBARA LAKE AREA
142301	42E05D132	Boundary Cell Mining Claim	7/17/2023 0:00	(100 %) Imagine Lithium Inc.	4257869	BARBARA LAKE AREA
144604	42E05D226	Single Cell Mining Claim	8/9/2023 0:00	(100 %) Imagine Lithium Inc.	4273501	BARBARA LAKE AREA
144605	42E05D246	Boundary Cell Mining Claim	8/9/2023 0:00	(100 %) Imagine Lithium Inc.	4273501	BARBARA LAKE AREA
146201	42E05D191	Boundary Cell Mining Claim	8/9/2023 0:00	(100 %) Imagine Lithium Inc.	4273503	BARBARA LAKE AREA
146202	42E05D232	Single Cell Mining Claim	8/9/2023 0:00	(100 %) Imagine Lithium Inc.	4273503	BARBARA LAKE AREA
151543	42E05D131	Boundary Cell Mining Claim	6/9/2026 0:00	(100 %) Imagine Lithium Inc.	4245840	BARBARA LAKE AREA
155786	42E05D168	Boundary Cell Mining Claim	8/9/2023 0:00	(100 %) Imagine Lithium Inc.	4257868	BARBARA LAKE AREA
163481	42E05D187	Single Cell Mining Claim	8/9/2023 0:00	(100 %) Imagine Lithium Inc.	4273501	BARBARA LAKE AREA
166526	42E05D129	Single Cell Mining Claim	7/17/2023 0:00	(100 %) Imagine Lithium Inc.	4257865	BARBARA LAKE AREA
171233	42E05D228	Single Cell Mining Claim	8/9/2023 0:00	(100 %) Imagine Lithium Inc.	4273501	BARBARA LAKE AREA
171772	42E05D189	Single Cell Mining Claim	7/17/2023 0:00	(100 %) Imagine Lithium Inc.	4257868	BARBARA LAKE AREA
171773	42E05D210	Single Cell Mining Claim	8/9/2023 0:00	(100 %) Imagine Lithium Inc.	4257868	BARBARA LAKE AREA
172782	42E05D153	Boundary Cell Mining Claim	6/9/2027 0:00	(100 %) Imagine Lithium Inc.	4245837	BARBARA LAKE AREA
174074	42E05D071	Single Cell Mining Claim	7/17/2023 0:00	(100 %) Imagine Lithium Inc.	4257866	BARBARA LAKE AREA
178750	42E05D110	Boundary Cell Mining Claim	7/17/2023 0:00	(100 %) Imagine Lithium Inc.	4257865	BARBARA LAKE AREA
178751	42E05D108	Boundary Cell Mining Claim	7/17/2023 0:00	(100 %) Imagine Lithium Inc.	4257865	BARBARA LAKE AREA
185536	42E05D089	Boundary Cell Mining Claim	7/17/2023 0:00	(100 %) Imagine Lithium Inc.	4257865	BARBARA LAKE AREA
188774	42E05D111	Boundary Cell Mining Claim	7/17/2023 0:00	(100 %) Imagine Lithium Inc.	4257869	BARBARA LAKE AREA
190749	42E05D150	Boundary Cell Mining Claim	7/17/2023 0:00	(100 %) Imagine Lithium Inc.	4257865	BARBARA LAKE AREA
191503	42E05D070	Single Cell Mining Claim	7/17/2023 0:00	(100 %) Imagine Lithium Inc.	4257866	BARBARA LAKE AREA
191504	42E05D094	Single Cell Mining Claim	8/9/2023 0:00	(100 %) Imagine Lithium Inc.	4257866	BARBARA LAKE AREA
192242	42E05D250	Single Cell Mining Claim	8/9/2023 0:00	(100 %) Imagine Lithium Inc.	4273502	BARBARA LAKE AREA
199745	42E05D117	Single Cell Mining Claim	8/9/2023 0:00	(100 %) Imagine Lithium Inc.	4273500	BARBARA LAKE AREA
200956	42E05D110	Boundary Cell Mining Claim	7/17/2023 0:00	(100 %) Imagine Lithium Inc.	4257869	BARBARA LAKE AREA
200957	42E05D171	Single Cell Mining Claim	11/5/2024 0:00	(100 %) Imagine Lithium Inc.	4257869	BARBARA LAKE AREA
202344	42E05D132	Boundary Cell Mining Claim	6/9/2027 0:00	(100 %) Imagine Lithium Inc.	4245837	BARBARA LAKE AREA
204351	42E05D253	Single Cell Mining Claim	8/9/2023 0:00	(100 %) Imagine Lithium Inc.	4273503	BARBARA LAKE AREA
209604	42E05D112	Boundary Cell Mining Claim	7/17/2023 0:00	(100 %) Imagine Lithium Inc.	4257866	BARBARA LAKE AREA
209605	42E05D111	Boundary Cell Mining Claim	7/17/2023 0:00	(100 %) Imagine Lithium Inc.	4257866	BARBARA LAKE AREA
211323	42E05D186	Single Cell Mining Claim	8/9/2023 0:00	(100 %) Imagine Lithium Inc.	4273501	BARBARA LAKE AREA
213194	42E05D152	Boundary Cell Mining Claim	11/5/2026 0:00	(100 %) Imagine Lithium Inc.	4281948	BARBARA LAKE AREA
217480	42E05D193	Boundary Cell Mining Claim	7/17/2023 0:00	(100 %) Imagine Lithium Inc.	4257869	BARBARA LAKE AREA
217481	42E05D190	Boundary Cell Mining Claim	7/17/2023 0:00	(100 %) Imagine Lithium Inc.	4257869	BARBARA LAKE AREA
220553	42E05D149	Single Cell Mining Claim	7/17/2023 0:00	(100 %) Imagine Lithium Inc.	4257865	BARBARA LAKE AREA
223375	42E05D166	Boundary Cell Mining Claim	8/9/2023 0:00	(100 %) Imagine Lithium Inc.	4273501	BARBARA LAKE AREA
223376	42E05D225	Single Cell Mining Claim	8/9/2023 0:00	(100 %) Imagine Lithium Inc.	4273501	BARBARA LAKE AREA
223377	42E05D245	Boundary Cell Mining Claim	8/9/2023 0:00	(100 %) Imagine Lithium Inc.	4273501	BARBARA LAKE AREA
223378	42E05D244	Boundary Cell Mining Claim	8/9/2023 0:00	(100 %) Imagine Lithium Inc.	4273501	BARBARA LAKE AREA
225312	42E05D090	Boundary Cell Mining Claim	7/17/2023 0:00	(100 %) Imagine Lithium Inc.	4257865	BARBARA LAKE AREA
225313	42E05D088	Boundary Cell Mining Claim	7/17/2023 0:00	(100 %) Imagine Lithium Inc.	4257865	BARBARA LAKE AREA
225314	42E05D109	Single Cell Mining Claim	7/17/2023 0:00	(100 %) Imagine Lithium Inc.	4257865	BARBARA LAKE AREA
227396	42E05D133	Boundary Cell Mining Claim	6/9/2027 0:00	(100 %) Imagine Lithium Inc.	4245837	BARBARA LAKE AREA
227397	42E05D173	Boundary Cell Mining Claim	6/9/2026 0:00	(100 %) Imagine Lithium Inc.	4245837	BARBARA LAKE AREA
228036	42E05D212	Single Cell Mining Claim	8/9/2023 0:00	(100 %) Imagine Lithium Inc.	4273503	BARBARA LAKE AREA
228037	42E05D211	Single Cell Mining Claim	8/9/2023 0:00	(100 %) Imagine Lithium Inc.	4273503	BARBARA LAKE AREA
233314	42E05D130	Boundary Cell Mining Claim	7/17/2023 0:00	(100 %) Imagine Lithium Inc.	4257865	BARBARA LAKE AREA
236040	42E05D174	Single Cell Mining Claim	7/17/2023 0:00	(100 %) Imagine Lithium Inc.	4257869	BARBARA LAKE AREA
236041	42E05D173	Boundary Cell Mining Claim	7/17/2023 0:00	(100 %) Imagine Lithium Inc.	4257869	BARBARA LAKE AREA
236042	42E05D170	Boundary Cell Mining Claim	7/17/2023 0:00	(100 %) Imagine Lithium Inc.	4257869	BARBARA LAKE AREA
240897	42E05D230	Single Cell Mining Claim	8/9/2023 0:00	(100 %) Imagine Lithium Inc.	4273502	BARBARA LAKE AREA
245489	42E05D128	Boundary Cell Mining Claim	7/17/2023 0:00	(100 %) Imagine Lithium Inc.	4257865	BARBARA LAKE AREA
246865	42E05D172	Boundary Cell Mining Claim	6/9/2027 0:00	(100 %) Imagine Lithium Inc.	4245837	BARBARA LAKE AREA
248903	42E05D254	Single Cell Mining Claim	8/9/2023 0:00	(100 %) Imagine Lithium Inc.	4273503	BARBARA LAKE AREA
248904	42E05D251	Single Cell Mining Claim	8/9/2023 0:00	(100 %) Imagine Lithium Inc.	4273503	BARBARA LAKE AREA
255543	42E05D130	Boundary Cell Mining Claim	7/17/2023 0:00	(100 %) Imagine Lithium Inc.	4257869	BARBARA LAKE AREA

Appendix 1. List of claims, Jackpot property

TENURE_NUM	PROV_CELL_GRID	TYPE	EXPIRATION_DATE	HOLDER	LEGACY_CLAIM	TOWNSHIP
274710	42E05D249	Single Cell Mining Claim	8/9/2023 0:00	(100 %) Imagine Lithium Inc.	4273502	BARBARA LAKE AREA
277312	42E05D164	Boundary Cell Mining Claim	8/9/2023 0:00	(100 %) Imagine Lithium Inc.	4273501	BARBARA LAKE AREA
277313	42E05D185	Boundary Cell Mining Claim	8/9/2023 0:00	(100 %) Imagine Lithium Inc.	4273501	BARBARA LAKE AREA
277314	42E05D224	Single Cell Mining Claim	8/9/2023 0:00	(100 %) Imagine Lithium Inc.	4273501	BARBARA LAKE AREA
286579	42E05D148	Boundary Cell Mining Claim	7/17/2023 0:00	(100 %) Imagine Lithium Inc.	4257865	BARBARA LAKE AREA
286580	42E05D208	Single Cell Mining Claim	8/9/2023 0:00	(100 %) Imagine Lithium Inc.	4257868	BARBARA LAKE AREA
287310	42E05D093	Single Cell Mining Claim	7/17/2023 0:00	(100 %) Imagine Lithium Inc.	4257866	BARBARA LAKE AREA
288030	42E05D214	Single Cell Mining Claim	8/9/2023 0:00	(100 %) Imagine Lithium Inc.	4273503	BARBARA LAKE AREA
288031	42E05D231	Single Cell Mining Claim	8/9/2023 0:00	(100 %) Imagine Lithium Inc.	4273503	BARBARA LAKE AREA
290865	42E05D115	Single Cell Mining Claim	8/9/2023 0:00	(100 %) Imagine Lithium Inc.	4273500	BARBARA LAKE AREA
292125	42E05D154	Single Cell Mining Claim	7/17/2023 0:00	(100 %) Imagine Lithium Inc.	4257869	BARBARA LAKE AREA
292126	42E05D191	Boundary Cell Mining Claim	7/17/2023 0:00	(100 %) Imagine Lithium Inc.	4257869	BARBARA LAKE AREA
296045	42E05D234	Single Cell Mining Claim	8/9/2023 0:00	(100 %) Imagine Lithium Inc.	4273503	BARBARA LAKE AREA
304761	42E05D112	Boundary Cell Mining Claim	7/17/2023 0:00	(100 %) Imagine Lithium Inc.	4257869	BARBARA LAKE AREA
304762	42E05D150	Boundary Cell Mining Claim	7/17/2023 0:00	(100 %) Imagine Lithium Inc.	4257869	BARBARA LAKE AREA
307138	42E05D165	Boundary Cell Mining Claim	8/9/2023 0:00	(100 %) Imagine Lithium Inc.	4273501	BARBARA LAKE AREA
307139	42E05D184	Boundary Cell Mining Claim	8/9/2023 0:00	(100 %) Imagine Lithium Inc.	4273501	BARBARA LAKE AREA
307140	42E05D247	Boundary Cell Mining Claim	8/9/2023 0:00	(100 %) Imagine Lithium Inc.	4273501	BARBARA LAKE AREA
307525	42E05D073	Single Cell Mining Claim	7/17/2023 0:00	(100 %) Imagine Lithium Inc.	4257866	BARBARA LAKE AREA
308249	42E05D213	Single Cell Mining Claim	8/9/2023 0:00	(100 %) Imagine Lithium Inc.	4273503	BARBARA LAKE AREA
308250	42E05D233	Single Cell Mining Claim	8/9/2023 0:00	(100 %) Imagine Lithium Inc.	4273503	BARBARA LAKE AREA
311532	42E05D131	Boundary Cell Mining Claim	7/17/2023 0:00	(100 %) Imagine Lithium Inc.	4257869	BARBARA LAKE AREA
311533	42E05D151	Boundary Cell Mining Claim	11/5/2025 0:00	(100 %) Imagine Lithium Inc.	4257869	BARBARA LAKE AREA
312951	42E05D152	Boundary Cell Mining Claim	6/9/2027 0:00	(100 %) Imagine Lithium Inc.	4245837	BARBARA LAKE AREA
314235	42E05D053	Single Cell Mining Claim	7/17/2023 0:00	(100 %) Imagine Lithium Inc.	4257866	BARBARA LAKE AREA
314236	42E05D050	Single Cell Mining Claim	7/17/2023 0:00	(100 %) Imagine Lithium Inc.	4257866	BARBARA LAKE AREA
320356	42E05D097	Single Cell Mining Claim	8/9/2023 0:00	(100 %) Imagine Lithium Inc.	4273500	BARBARA LAKE AREA
324473	42E05D190	Boundary Cell Mining Claim	8/9/2023 0:00	(100 %) Imagine Lithium Inc.	4257868	BARBARA LAKE AREA
324474	42E05D188	Single Cell Mining Claim	8/9/2023 0:00	(100 %) Imagine Lithium Inc.	4257868	BARBARA LAKE AREA
326662	42E05D205	Single Cell Mining Claim	8/9/2023 0:00	(100 %) Imagine Lithium Inc.	4273501	BARBARA LAKE AREA
331664	42E05D167	Boundary Cell Mining Claim	8/9/2023 0:00	(100 %) Imagine Lithium Inc.	4273501	BARBARA LAKE AREA
334444	42E05D248	Single Cell Mining Claim	8/9/2023 0:00	(100 %) Imagine Lithium Inc.	4273501	BARBARA LAKE AREA
336336	42E05D193	Boundary Cell Mining Claim	8/9/2023 0:00	(100 %) Imagine Lithium Inc.	4273503	BARBARA LAKE AREA
336337	42E05D252	Single Cell Mining Claim	8/9/2023 0:00	(100 %) Imagine Lithium Inc.	4273503	BARBARA LAKE AREA
341731	42E05D096	Single Cell Mining Claim	8/9/2023 0:00	(100 %) Imagine Lithium Inc.	4273500	BARBARA LAKE AREA
341732	42E05D116	Single Cell Mining Claim	8/9/2023 0:00	(100 %) Imagine Lithium Inc.	4273500	BARBARA LAKE AREA
343010	42E05D113	Boundary Cell Mining Claim	7/17/2023 0:00	(100 %) Imagine Lithium Inc.	4257869	BARBARA LAKE AREA
343011	42E05D172	Boundary Cell Mining Claim	11/5/2025 0:00	(100 %) Imagine Lithium Inc.	4257869	BARBARA LAKE AREA
504392	42E05D045	Multi-cell Mining Claim	4/10/2023 0:00	(100 %) Imagine Lithium Inc.		BARBARA LAKE AREA
505590	52H08A099,52H08A100,52H08A079,52H08A080,52H08A059,52H08A060,52H08A039,52H08A040,52H08A019,52H08A020,52H08H399,52H08H400,42E05D081,42E05D082,42E05D061,42E05D062,42E05D041,42E05D04	Multi-cell Mining Claim	4/10/2023 0:00	(100 %) Imagine Lithium Inc.		BARBARA LAKE AREA,KEEMLE LAKE AREA
506152	52H08A198,52H08A199,52H08A178,52H08A179,52H08A158,52H08A159,52H08A138,52H08A139,52H08A118,52H08A119,52H08A098,52H08A078,52H0	Multi-cell Mining Claim	4/10/2023 0:00	(100 %) Imagine Lithium Inc.		KEEMLE LAKE AREA
507922	52H08A218	Single Cell Mining Claim	4/10/2023 0:00	(100 %) Imagine Lithium Inc.		KEEMLE LAKE AREA
507923	42E05D221	Single Cell Mining Claim	4/10/2023 0:00	(100 %) Imagine Lithium Inc.		BARBARA LAKE AREA,KEEMLE LAKE AREA
507924	52H08A258	Single Cell Mining Claim	4/10/2023 0:00	(100 %) Imagine Lithium Inc.		KEEMLE LAKE AREA
507925	52H08A238	Single Cell Mining Claim	4/10/2023 0:00	(100 %) Imagine Lithium Inc.		KEEMLE LAKE AREA
507926	52H08A279	Single Cell Mining Claim	4/10/2023 0:00	(100 %) Imagine Lithium Inc.		KEEMLE LAKE AREA
507927	52H08A260	Single Cell Mining Claim	4/10/2023 0:00	(100 %) Imagine Lithium Inc.		BARBARA LAKE AREA,KEEMLE LAKE AREA
507928	52H08A219	Single Cell Mining Claim	4/10/2023 0:00	(100 %) Imagine Lithium Inc.		KEEMLE LAKE AREA
507929	52H08A280	Single Cell Mining Claim	4/10/2023 0:00	(100 %) Imagine Lithium Inc.		BARBARA LAKE AREA,KEEMLE LAKE AREA
507930	52H08A240	Single Cell Mining Claim	4/10/2023 0:00	(100 %) Imagine Lithium Inc.		BARBARA LAKE AREA,KEEMLE LAKE AREA
507931	42E05D262	Single Cell Mining Claim	4/10/2023 0:00	(100 %) Imagine Lithium Inc.		BARBARA LAKE AREA
507932	42E05D222	Single Cell Mining Claim	4/10/2023 0:00	(100 %) Imagine Lithium Inc.		BARBARA LAKE AREA
507933	52H08A239	Single Cell Mining Claim	4/10/2023 0:00	(100 %) Imagine Lithium Inc.		KEEMLE LAKE AREA
507934	42E05D202	Single Cell Mining Claim	4/10/2023 0:00	(100 %) Imagine Lithium Inc.		BARBARA LAKE AREA
507935	42E05D223	Single Cell Mining Claim	4/10/2023 0:00	(100 %) Imagine Lithium Inc.		BARBARA LAKE AREA

Appendix 1. List of claims, Jackpot property

TENURE_NUM	PROV_CELL_GRID	TYPE	EXPIRATION_DATE	HOLDER	LEGACY_CLAIM	TOWNSHIP
507936	42E05D261	Single Cell Mining Claim	4/10/2023 0:00	(100 %) Imagine Lithium Inc.		BARBARA LAKE AREA,KEEMLE LAKE AREA
507937	42E05D241	Single Cell Mining Claim	4/10/2023 0:00	(100 %) Imagine Lithium Inc.		BARBARA LAKE AREA,KEEMLE LAKE AREA
507938	42E05D242	Single Cell Mining Claim	4/10/2023 0:00	(100 %) Imagine Lithium Inc.		BARBARA LAKE AREA
507939	42E05D203	Single Cell Mining Claim	4/10/2023 0:00	(100 %) Imagine Lithium Inc.		BARBARA LAKE AREA
507940	42E05D201	Single Cell Mining Claim	4/10/2023 0:00	(100 %) Imagine Lithium Inc.		BARBARA LAKE AREA,KEEMLE LAKE AREA
507941	52H08A259	Single Cell Mining Claim	4/10/2023 0:00	(100 %) Imagine Lithium Inc.		KEEMLE LAKE AREA
507942	52H08A220	Single Cell Mining Claim	4/10/2023 0:00	(100 %) Imagine Lithium Inc.		BARBARA LAKE AREA,KEEMLE LAKE AREA
507943	52H08A278	Single Cell Mining Claim	4/10/2023 0:00	(100 %) Imagine Lithium Inc.		KEEMLE LAKE AREA
509101	52H08A298,52H08A299,52H08A300,42E05D281,42E05D282,52H08A318,52H08A319,52H08A320,42E05D288,42E05D289,42E05D290,42E05D291,42E05D292,42E05D293,42E05D294,42E05D295,42E05D268,42E05D269,42E05D270,42E05D271,42E05D272,42E05D273,42E05D274,42E05D275,42E05D308,42E05D309,42E05D310	Multi-cell Mining Claim	4/10/2023 0:00	(100 %) Imagine Lithium Inc.		BARBARA LAKE AREA,KEEMLE LAKE AREA
509874	42E05D288,42E05D289,42E05D290,42E05D291,42E05D292,42E05D293,42E05D294,42E05D295,42E05D268,42E05D269,42E05D270,42E05D271,42E05D272,42E05D273,42E05D274,42E05D275,42E05D308,42E05D309,42E05D310	Multi-cell Mining Claim	4/10/2023 0:00	(100 %) Imagine Lithium Inc.		BARBARA LAKE AREA
511281	42E05D046	Single Cell Mining Claim	4/10/2023 0:00	(100 %) Imagine Lithium Inc.		BARBARA LAKE AREA
511282	42E05D047	Single Cell Mining Claim	4/10/2023 0:00	(100 %) Imagine Lithium Inc.		BARBARA LAKE AREA
514292	42E05D336,42E05D337,42E05D338,42E05D339,42E05D296,42E05D297,42E05D298,42E05D299,42E05D276,42E05D277,42E05D278,42E05D279,42E05D255,42E05D256,42E05D257,42E05D235,42E05D236,42E05D237,42E05D393,42E05D394,42E05D395,42E05D396,42E05D397,42E05D398,42E05D399,42E05D373,42E05D374,42E05D375,42E05D376,42E05D377,42E05D378,42E05D379,42E05D353,42E05D354,42E05D355,42E05D356,42E05D032,42E05D003,42E05D010,42E05D011,42E05D012,42E05D013,42E05D014,42E05D015,42E05D016,42E05D017,42E05D018,42E05D019,42E05D020,42E05E390,42E05E391,42E05E392,42E05E393,42E05E394,42E05E395	Multi-cell Mining Claim	4/11/2023 0:00	(100 %) Imagine Lithium Inc.		BARBARA LAKE AREA
514293	42E05D393,42E05D394,42E05D395,42E05D396,42E05D397,42E05D398,42E05D399,42E05D373,42E05D374,42E05D375,42E05D376,42E05D377,42E05D378,42E05D379,42E05D353,42E05D354,42E05D355,42E05D356,42E05D032,42E05D003,42E05D010,42E05D011,42E05D012,42E05D013,42E05D014,42E05D015,42E05D016,42E05D017,42E05D018,42E05D019,42E05D020,42E05E390,42E05E391,42E05E392,42E05E393,42E05E394,42E05E395	Multi-cell Mining Claim	4/11/2023 0:00	(100 %) Imagine Lithium Inc.		BARBARA LAKE AREA
515875	42E05D032,42E05D003,42E05D010,42E05D011,42E05D012,42E05D013,42E05D014,42E05D015,42E05D016,42E05D017,42E05D018,42E05D019,42E05D020,42E05E390,42E05E391,42E05E392,42E05E393,42E05E394,42E05E395	Multi-cell Mining Claim	4/12/2023 0:00	(100 %) Imagine Lithium Inc.		BARBARA LAKE AREA
515883	42E05C122	Single Cell Mining Claim	4/12/2023 0:00	(100 %) Imagine Lithium Inc.		BARBARA LAKE AREA
515884	42E05C145	Single Cell Mining Claim	4/12/2023 0:00	(100 %) Imagine Lithium Inc.		BARBARA LAKE AREA
515885	42E05D140	Single Cell Mining Claim	4/12/2023 0:00	(100 %) Imagine Lithium Inc.		BARBARA LAKE AREA
515886	42E05D158	Single Cell Mining Claim	4/12/2023 0:00	(100 %) Imagine Lithium Inc.		BARBARA LAKE AREA
515887	42E05D159	Single Cell Mining Claim	4/12/2023 0:00	(100 %) Imagine Lithium Inc.		BARBARA LAKE AREA
515888	42E05C121	Single Cell Mining Claim	4/12/2023 0:00	(100 %) Imagine Lithium Inc.		BARBARA LAKE AREA
515889	42E05C142	Single Cell Mining Claim	4/12/2023 0:00	(100 %) Imagine Lithium Inc.		BARBARA LAKE AREA
515890	42E05C141	Single Cell Mining Claim	4/12/2023 0:00	(100 %) Imagine Lithium Inc.		BARBARA LAKE AREA
515891	42E05C123	Single Cell Mining Claim	4/12/2023 0:00	(100 %) Imagine Lithium Inc.		BARBARA LAKE AREA
515892	42E05C144	Single Cell Mining Claim	4/12/2023 0:00	(100 %) Imagine Lithium Inc.		BARBARA LAKE AREA
515893	42E05C124	Single Cell Mining Claim	4/12/2023 0:00	(100 %) Imagine Lithium Inc.		BARBARA LAKE AREA
515894	42E05C127	Single Cell Mining Claim	4/12/2023 0:00	(100 %) Imagine Lithium Inc.		BARBARA LAKE AREA
515895	42E05D139	Single Cell Mining Claim	4/12/2023 0:00	(100 %) Imagine Lithium Inc.		BARBARA LAKE AREA
515896	42E05C125	Single Cell Mining Claim	4/12/2023 0:00	(100 %) Imagine Lithium Inc.		BARBARA LAKE AREA
515897	42E05C126	Single Cell Mining Claim	4/12/2023 0:00	(100 %) Imagine Lithium Inc.		BARBARA LAKE AREA
515898	42E05C147	Single Cell Mining Claim	4/12/2023 0:00	(100 %) Imagine Lithium Inc.		BARBARA LAKE AREA
515899	42E05D138	Single Cell Mining Claim	4/12/2023 0:00	(100 %) Imagine Lithium Inc.		BARBARA LAKE AREA
515900	42E05D160	Single Cell Mining Claim	4/12/2023 0:00	(100 %) Imagine Lithium Inc.		BARBARA LAKE AREA
515901	42E05C143	Single Cell Mining Claim	4/12/2023 0:00	(100 %) Imagine Lithium Inc.		BARBARA LAKE AREA
515902	42E05C146	Single Cell Mining Claim	4/12/2023 0:00	(100 %) Imagine Lithium Inc.		BARBARA LAKE AREA
515942	42E05D179	Single Cell Mining Claim	4/12/2023 0:00	(100 %) Imagine Lithium Inc.		BARBARA LAKE AREA
515943	42E05C167	Single Cell Mining Claim	4/12/2023 0:00	(100 %) Imagine Lithium Inc.		BARBARA LAKE AREA
515944	42E05C165	Single Cell Mining Claim	4/12/2023 0:00	(100 %) Imagine Lithium Inc.		BARBARA LAKE AREA
515945	42E05C163	Single Cell Mining Claim	4/12/2023 0:00	(100 %) Imagine Lithium Inc.		BARBARA LAKE AREA
515946	42E05C161	Single Cell Mining Claim	4/12/2023 0:00	(100 %) Imagine Lithium Inc.		BARBARA LAKE AREA

Appendix 1. List of claims, Jackpot property

TENURE_NUM	PROV_CELL_GRID	TYPE	EXPIRATION_DATE	HOLDER	LEGACY_CLAIM	TOWNSHIP
515947	42E05C162	Single Cell Mining Claim	4/12/2023 0:00	(100 %) Imagine Lithium Inc.		BARBARA LAKE AREA
515948	42E05C166	Single Cell Mining Claim	4/12/2023 0:00	(100 %) Imagine Lithium Inc.		BARBARA LAKE AREA
515949	42E05D178	Single Cell Mining Claim	4/12/2023 0:00	(100 %) Imagine Lithium Inc.		BARBARA LAKE AREA
515950	42E05D180	Single Cell Mining Claim	4/12/2023 0:00	(100 %) Imagine Lithium Inc.		BARBARA LAKE AREA
515951	42E05C164	Single Cell Mining Claim	4/12/2023 0:00	(100 %) Imagine Lithium Inc.		BARBARA LAKE AREA
515952	42E05C181	Single Cell Mining Claim	4/12/2023 0:00	(100 %) Imagine Lithium Inc.		BARBARA LAKE AREA
515953	42E05D199	Single Cell Mining Claim	4/12/2023 0:00	(100 %) Imagine Lithium Inc.		BARBARA LAKE AREA
515954	42E05C186	Single Cell Mining Claim	4/12/2023 0:00	(100 %) Imagine Lithium Inc.		BARBARA LAKE AREA
515955	42E05C184	Single Cell Mining Claim	4/12/2023 0:00	(100 %) Imagine Lithium Inc.		BARBARA LAKE AREA
515956	42E05D198	Single Cell Mining Claim	4/12/2023 0:00	(100 %) Imagine Lithium Inc.		BARBARA LAKE AREA
515957	42E05D200	Single Cell Mining Claim	4/12/2023 0:00	(100 %) Imagine Lithium Inc.		BARBARA LAKE AREA
515958	42E05C182	Single Cell Mining Claim	4/12/2023 0:00	(100 %) Imagine Lithium Inc.		BARBARA LAKE AREA
515959	42E05C183	Single Cell Mining Claim	4/12/2023 0:00	(100 %) Imagine Lithium Inc.		BARBARA LAKE AREA
515960	42E05C185	Single Cell Mining Claim	4/12/2023 0:00	(100 %) Imagine Lithium Inc.		BARBARA LAKE AREA
515961	42E05C187	Single Cell Mining Claim	4/12/2023 0:00	(100 %) Imagine Lithium Inc.		BARBARA LAKE AREA
515963	42E05D238,42E05D239,42E05D240,42E05C221,42E05C222,42E05C223,42E05C224,42E05C225,42E05C226,42E05C227,42E05D218,42E05D219,42E05D220,42E05C201,42E05C202,42E05D258,42E05D259,42E05D260,42E05C241,42E05C242,42E05C243,42E05C244,42E	Multi-cell Mining Claim	4/12/2023 0:00	(100 %) Imagine Lithium Inc.		BARBARA LAKE AREA
515971	42E05D258,42E05D259,42E05D260,42E05C241,42E05C242,42E05C243,42E05C244,42E	Multi-cell Mining Claim	4/12/2023 0:00	(100 %) Imagine Lithium Inc.		BARBARA LAKE AREA
515974	42E05D328	Single Cell Mining Claim	4/12/2023 0:00	(100 %) Imagine Lithium Inc.		BARBARA LAKE AREA
515975	42E05D351	Single Cell Mining Claim	4/12/2023 0:00	(100 %) Imagine Lithium Inc.		BARBARA LAKE AREA
515976	42E05D368	Single Cell Mining Claim	4/12/2023 0:00	(100 %) Imagine Lithium Inc.		BARBARA LAKE AREA
515977	42E05D370	Single Cell Mining Claim	4/12/2023 0:00	(100 %) Imagine Lithium Inc.		BARBARA LAKE AREA
515978	42E05D331	Single Cell Mining Claim	4/12/2023 0:00	(100 %) Imagine Lithium Inc.		BARBARA LAKE AREA
515979	42E05D348	Single Cell Mining Claim	4/12/2023 0:00	(100 %) Imagine Lithium Inc.		BARBARA LAKE AREA
515980	42E05D329	Single Cell Mining Claim	4/12/2023 0:00	(100 %) Imagine Lithium Inc.		BARBARA LAKE AREA
515981	42E05D388	Single Cell Mining Claim	4/12/2023 0:00	(100 %) Imagine Lithium Inc.		BARBARA LAKE AREA
515982	42E05D369	Single Cell Mining Claim	4/12/2023 0:00	(100 %) Imagine Lithium Inc.		BARBARA LAKE AREA
515983	42E05D349	Single Cell Mining Claim	4/12/2023 0:00	(100 %) Imagine Lithium Inc.		BARBARA LAKE AREA
515984	42E05D390	Single Cell Mining Claim	4/12/2023 0:00	(100 %) Imagine Lithium Inc.		BARBARA LAKE AREA
515985	42E05D350	Single Cell Mining Claim	4/12/2023 0:00	(100 %) Imagine Lithium Inc.		BARBARA LAKE AREA
515986	42E05D330	Single Cell Mining Claim	4/12/2023 0:00	(100 %) Imagine Lithium Inc.		BARBARA LAKE AREA
515987	42E05D371	Single Cell Mining Claim	4/12/2023 0:00	(100 %) Imagine Lithium Inc.		BARBARA LAKE AREA
515988	42E05D389	Single Cell Mining Claim	4/12/2023 0:00	(100 %) Imagine Lithium Inc.		BARBARA LAKE AREA
515989	42E05D391	Single Cell Mining Claim	4/12/2023 0:00	(100 %) Imagine Lithium Inc.		BARBARA LAKE AREA
515990	42E05D392	Single Cell Mining Claim	4/12/2023 0:00	(100 %) Imagine Lithium Inc.		BARBARA LAKE AREA
515991	42E05D372	Single Cell Mining Claim	4/12/2023 0:00	(100 %) Imagine Lithium Inc.		BARBARA LAKE AREA
515992	42E05D352	Single Cell Mining Claim	4/12/2023 0:00	(100 %) Imagine Lithium Inc.		BARBARA LAKE AREA
515993	42E05D332	Single Cell Mining Claim	4/12/2023 0:00	(100 %) Imagine Lithium Inc.		BARBARA LAKE AREA
515994	42E05D367	Single Cell Mining Claim	4/12/2023 0:00	(100 %) Imagine Lithium Inc.		BARBARA LAKE AREA
515995	42E05D387	Single Cell Mining Claim	4/12/2023 0:00	(100 %) Imagine Lithium Inc.		BARBARA LAKE AREA
515996	42E05D347	Single Cell Mining Claim	4/12/2023 0:00	(100 %) Imagine Lithium Inc.		BARBARA LAKE AREA
515997	42E05D327	Single Cell Mining Claim	4/12/2023 0:00	(100 %) Imagine Lithium Inc.		BARBARA LAKE AREA
515998	42E05D381,42E05D382,42E05D383,42E05D384,42E05D385,42E05D386,42E05D361,42E05D362,42E05D363,42E05D364,42E05D365,42E05D366,42E05D341,42E05D342,42E05D343,42E05D344,42E05D345,42E05D346,4	Multi-cell Mining Claim	4/12/2023 0:00	(100 %) Imagine Lithium Inc.		BARBARA LAKE AREA,KEEMLE LAKE AREA
515999	52H011016,52H011017,52H011018,52H011019,52H011020,52H08A396,52H08A397,52H08A398,52H08A399,52H08A400,52H08A376,52H08A377,52H08A378,52H08A379,52H08A380,52H08A356,52H08A357,52H08A358,52H011015,52H08A395,52H08A375,52H08A355,52H08A335,52H08A295,52H08A296,52H08A297,52H08A275,52H08A276,52H08A277,52H08A255,52H08	Multi-cell Mining Claim	4/12/2023 0:00	(100 %) Imagine Lithium Inc.		BARBARA LAKE AREA,COSGRAVE LAKE AREA,KEEMLE LAKE AREA
516000	52H011015,52H08A395,52H08A375,52H08A355,52H08A335,52H08A295,52H08A296,52H08A297,52H08A275,52H08A276,52H08A277,52H08A255,52H08	Multi-cell Mining Claim	4/12/2023 0:00	(100 %) Imagine Lithium Inc.		KEEMLE LAKE AREA
521055	42E05E365,42E05E366,42E05E367,42E05E368,42E05E369,42E05E	Multi-cell Mining Claim	5/9/2023 0:00	(100 %) Imagine Lithium Inc.		BARBARA LAKE AREA
521056	52H08A196,52H08A197,	Multi-cell Mining Claim	5/9/2023 0:00	(100 %) Imagine Lithium Inc.		KEEMLE LAKE AREA

Appendix 1. List of claims, Jackpot property

TENURE_NUM	PROV_CELL_GRID	TYPE	EXPIRATION_DATE	HOLDER	LEGACY_CLAIM	TOWNSHIP
521214	42E05C248,42E05C24 9,42E05C250,42E05C 251,42E05C252,42E05 C228,42E05C229,42E 05C230,42E05C231,42 E05C232,42E05C208, 42E05C209,42E05C21 0,42E05C211,42E05C 212,42E05C188,42E05 C189,42E05C190,42E	Multi-cell Mining Claim	5/11/2023 0:00	(100 %) Imagine Lithium Inc.		BARBARA LAKE AREA
521215	42E05C253,42E05C25 4,42E05C255,42E05C 233,42E05C234,42E05 C235,42E05C213,42E 05C214,42E05C215,42 E05C193,42E05C194,	Multi-cell Mining Claim	5/11/2023 0:00	(100 %) Imagine Lithium Inc.		BARBARA LAKE AREA
521216	42E05C333,42E05C33 4,42E05C335,42E05C 293,42E05C294,42E05 C295,42E05C273,42E 05C274,42E05C275,42	Multi-cell Mining Claim	5/11/2023 0:00	(100 %) Imagine Lithium Inc.		BARBARA LAKE AREA
521217	42E05C328,42E05C32 9,42E05C330,42E05C 331,42E05C332,42E05 C288,42E05C289,42E 05C290,42E05C291,42 E05C292,42E05C268, 42E05C269,42E05C27 0,42E05C271,42E05C	Multi-cell Mining Claim	5/11/2023 0:00	(100 %) Imagine Lithium Inc.		BARBARA LAKE AREA
521218	42E04L081,42E04L08 2,42E04L083,42E04L0 84,42E04L062,42E04L 063,42E04L064,42E04 L042,42E04L043,42E0 4L044,42E04L022,42E 04L023,42E04L024,42	Multi-cell Mining Claim	5/11/2023 0:00	(100 %) Imagine Lithium Inc.		BARBARA LAKE AREA,COSGRAVE LAKE AREA,HANSON LAKE AREA,KEEMLE LAKE AREA
521219	42E04L085,42E04L08 6,42E04L087,42E04L0 88,42E04L089,42E04L 065,42E04L066,42E04 L067,42E04L068,42E0 4L069,42E04L045,42E 04L046,42E04L047,42 E04L048,42E04L049,4 2E04L025,42E04L026, 42E04L027,42E04L02	Multi-cell Mining Claim	5/11/2023 0:00	(100 %) Imagine Lithium Inc.		BARBARA LAKE AREA,COSGRAVE LAKE AREA
521220	42E04L090,42E04L09 1,42E04L092,42E04L0 93,42E04L094,42E04L 070,42E04L071,42E04 L072,42E04L073,42E0 4L074,42E04L050,42E 04L051,42E04L052,42 E04L053,42E04L054,4 2E04L030,42E04L031, 42E04L032,42E04L03	Multi-cell Mining Claim	5/11/2023 0:00	(100 %) Imagine Lithium Inc.		BARBARA LAKE AREA,COSGRAVE LAKE AREA
521221	42E04L161,42E04L16 2,42E04L163,42E04L1 64,42E04L165,42E04L 166,42E04L141,42E04 L142,42E04L143,42E0 4L144,42E04L145,42E 04L146,42E04L121,42 E04L122,42E04L123,4 2E04L124,42E04L125, 42E04L167,42E04L16	Multi-cell Mining Claim	5/11/2023 0:00	(100 %) Imagine Lithium Inc.		COSGRAVE LAKE AREA,HANSON LAKE AREA
521222	8,42E04L169,42E04L1 70,42E04L171,42E04L 172,42E04L147,42E04 L148,42E04L149,42E0 4L150,42E04L151,42E 04L152,42E04L127,42 E04L128,42E04L129,4 2E04L130,42E04L131, 42E04L173,42E04L17	Multi-cell Mining Claim	5/11/2023 0:00	(100 %) Imagine Lithium Inc.		COSGRAVE LAKE AREA
521223	4,42E04L175,42E04L1 76,42E04L177,42E04L 153,42E04L154,42E04 L155,42E04L156,42E0 4L157,42E04L133,42E 04L134,42E04L135,42 E04L136,42E04L137,4	Multi-cell Mining Claim	5/11/2023 0:00	(100 %) Imagine Lithium Inc.		COSGRAVE LAKE AREA
522262	42E04L018, 42E04L019	Multi-cell Mining Claim	5/30/2023 0:00	(100 %) Imagine Lithium Inc.		BARBARA LAKE AREA,COSGRAVE LAKE AREA

Appendix 1. List of claims, Jackpot property

TENURE_NUM	PROV_CELL_GRID	TYPE	EXPIRATION_DATE	HOLDER	LEGACY_CLAIM	TOWNSHIP
522443	42E04L018,42E04L019,42E05D300,42E05C281,42E05C282,42E05C283,42E05C284,42E05C285,42E05C286,42E05C287,42E05D280,42E05C261,42E05C262,42E05C263,42E05C264,42E05C265,42E05C266,42E05C267,42E05C268	Multi-cell Mining Claim	12/3/2023 0:00	(100 %) Imagine Lithium Inc.		BARBARA LAKE AREA
522444	42E04K006,42E04K007,42E04K008,42E04K009,42E04K010,42E05C386,42E05C387,42E05C388,42E05C389,42E05C390,42E05C365,42E05C366,42E05C367,42E05C368,42E05C369,42E05C370,42E05C345,42E05C346,42E05C347	Multi-cell Mining Claim	12/3/2023 0:00	(100 %) Imagine Lithium Inc.		BARBARA LAKE AREA,COSGRAVE LAKE AREA
522445	42E05D380,42E05C361,42E05C362,42E05C363,42E05C364,42E05D360,42E05C341,42E05C342,42E05C343,42E05C344,42E05D340,42E05D341	Multi-cell Mining Claim	12/3/2023 0:00	(100 %) Imagine Lithium Inc.		BARBARA LAKE AREA
522446	52H01193,52H01194,52H01195,52H01196,52H01197,52H01198,52H01199,52H01200,52H01173,52H01174,52H01175,52H01176,52H01177,52H01178,52H01179,52H01180,52H01153,52H01154	Multi-cell Mining Claim	12/3/2023 0:00	(100 %) Imagine Lithium Inc.		COSGRAVE LAKE AREA,HANSON LAKE AREA
522447	52H011074	Single Cell Mining Claim	12/3/2023 0:00	(100 %) Imagine Lithium Inc.		HANSON LAKE AREA
522448	52H011036	Single Cell Mining Claim	12/3/2023 0:00	(100 %) Imagine Lithium Inc.		HANSON LAKE AREA,KEEMLE LAKE AREA
522449	52H011057	Single Cell Mining Claim	12/3/2023 0:00	(100 %) Imagine Lithium Inc.		HANSON LAKE AREA
522450	52H011115	Single Cell Mining Claim	12/3/2023 0:00	(100 %) Imagine Lithium Inc.		HANSON LAKE AREA
522451	52H011094	Single Cell Mining Claim	12/3/2023 0:00	(100 %) Imagine Lithium Inc.		HANSON LAKE AREA
522452	52H011037	Single Cell Mining Claim	12/3/2023 0:00	(100 %) Imagine Lithium Inc.		HANSON LAKE AREA,KEEMLE LAKE AREA
522453	52H011095	Single Cell Mining Claim	12/3/2023 0:00	(100 %) Imagine Lithium Inc.		HANSON LAKE AREA
522454	52H011076	Single Cell Mining Claim	12/3/2023 0:00	(100 %) Imagine Lithium Inc.		HANSON LAKE AREA
522455	52H011114	Single Cell Mining Claim	12/3/2023 0:00	(100 %) Imagine Lithium Inc.		HANSON LAKE AREA
522456	52H011035	Single Cell Mining Claim	12/3/2023 0:00	(100 %) Imagine Lithium Inc.		HANSON LAKE AREA,KEEMLE LAKE AREA
522457	52H011075	Single Cell Mining Claim	12/3/2023 0:00	(100 %) Imagine Lithium Inc.		HANSON LAKE AREA
522458	52H011097	Single Cell Mining Claim	12/3/2023 0:00	(100 %) Imagine Lithium Inc.		HANSON LAKE AREA
522459	52H011055	Single Cell Mining Claim	12/3/2023 0:00	(100 %) Imagine Lithium Inc.		HANSON LAKE AREA
522460	52H011096	Single Cell Mining Claim	12/3/2023 0:00	(100 %) Imagine Lithium Inc.		HANSON LAKE AREA
522461	52H011056	Single Cell Mining Claim	12/3/2023 0:00	(100 %) Imagine Lithium Inc.		HANSON LAKE AREA
522462	52H011077	Single Cell Mining Claim	12/3/2023 0:00	(100 %) Imagine Lithium Inc.		HANSON LAKE AREA
531555	52H011116	Single Cell Mining Claim	9/18/2023 0:00	(100 %) Imagine Lithium Inc.		HANSON LAKE AREA
535603	42E05C107	Single Cell Mining Claim	12/2/2023 0:00	(100 %) Imagine Lithium Inc.		BARBARA LAKE AREA
535604	42E05C108	Single Cell Mining Claim	12/2/2023 0:00	(100 %) Imagine Lithium Inc.		BARBARA LAKE AREA
535605	42E05C068	Single Cell Mining Claim	12/2/2023 0:00	(100 %) Imagine Lithium Inc.		BARBARA LAKE AREA
535606	42E05C066	Single Cell Mining Claim	12/2/2023 0:00	(100 %) Imagine Lithium Inc.		BARBARA LAKE AREA
535607	42E05C105	Single Cell Mining Claim	12/2/2023 0:00	(100 %) Imagine Lithium Inc.		BARBARA LAKE AREA
535608	42E05C065	Single Cell Mining Claim	12/2/2023 0:00	(100 %) Imagine Lithium Inc.		BARBARA LAKE AREA
535609	42E05C026	Single Cell Mining Claim	12/2/2023 0:00	(100 %) Imagine Lithium Inc.		BARBARA LAKE AREA
535610	42E05C085	Single Cell Mining Claim	12/2/2023 0:00	(100 %) Imagine Lithium Inc.		BARBARA LAKE AREA
535611	42E05C106	Single Cell Mining Claim	12/2/2023 0:00	(100 %) Imagine Lithium Inc.		BARBARA LAKE AREA
535612	42E05C069	Single Cell Mining Claim	12/2/2023 0:00	(100 %) Imagine Lithium Inc.		BARBARA LAKE AREA
535613	42E05C086	Single Cell Mining Claim	12/2/2023 0:00	(100 %) Imagine Lithium Inc.		BARBARA LAKE AREA
535614	42E05C048	Single Cell Mining Claim	12/2/2023 0:00	(100 %) Imagine Lithium Inc.		BARBARA LAKE AREA
535615	42E05C028	Single Cell Mining Claim	12/2/2023 0:00	(100 %) Imagine Lithium Inc.		BARBARA LAKE AREA
535616	42E05C109	Single Cell Mining Claim	12/2/2023 0:00	(100 %) Imagine Lithium Inc.		BARBARA LAKE AREA
535617	42E05C089	Single Cell Mining Claim	12/2/2023 0:00	(100 %) Imagine Lithium Inc.		BARBARA LAKE AREA
535618	42E05C029	Single Cell Mining Claim	12/2/2023 0:00	(100 %) Imagine Lithium Inc.		BARBARA LAKE AREA
535619	42E05C046	Single Cell Mining Claim	12/2/2023 0:00	(100 %) Imagine Lithium Inc.		BARBARA LAKE AREA
535620	42E05C087	Single Cell Mining Claim	12/2/2023 0:00	(100 %) Imagine Lithium Inc.		BARBARA LAKE AREA
535621	42E05C067	Single Cell Mining Claim	12/2/2023 0:00	(100 %) Imagine Lithium Inc.		BARBARA LAKE AREA
535622	42E05C047	Single Cell Mining Claim	12/2/2023 0:00	(100 %) Imagine Lithium Inc.		BARBARA LAKE AREA
535623	42E05C027	Single Cell Mining Claim	12/2/2023 0:00	(100 %) Imagine Lithium Inc.		BARBARA LAKE AREA
535624	42E05C049	Single Cell Mining Claim	12/2/2023 0:00	(100 %) Imagine Lithium Inc.		BARBARA LAKE AREA
535625	42E05C045	Single Cell Mining Claim	12/2/2023 0:00	(100 %) Imagine Lithium Inc.		BARBARA LAKE AREA
535626	42E05C088	Single Cell Mining Claim	12/2/2023 0:00	(100 %) Imagine Lithium Inc.		BARBARA LAKE AREA

Appendix 1. List of claims, Jackpot property

TENURE_NUM	PROV_CELL_GRID	TYPE	EXPIRATION_DATE	HOLDER	LEGACY_CLAIM	TOWNSHIP
535629	42E05C110,42E05C111,42E05C112,42E05C113,42E05C114,42E05C090,42E05C091,42E05C092,42E05C093,42E05C094,42E05C070,42E05C071,42E05C072,42E05C073,42E05C074,42E05C050,42E05C051,42E05C052,42E05C197,42E05C176,42E05C177,42E05C148,42E05C149,42E05C150,42E05C151,42E05C152,42E05C153,42E05C154,42E05C155,42E05C156,42E05C157,42E05C128,42E05C129,42E05C130,42E05	Multi-cell Mining Claim	12/2/2023 0:00	(100 %) Imagine Lithium Inc.		BARBARA LAKE AREA
535630	42E05C197,42E05C176,42E05C177,42E05C148,42E05C149,42E05C150,42E05C151,42E05C152,42E05C153,42E05C154,42E05C155,42E05C156,42E05C157,42E05C128,42E05C129,42E05C130,42E05	Multi-cell Mining Claim	12/2/2023 0:00	(100 %) Imagine Lithium Inc.		BARBARA LAKE AREA
536780	42E05D068	Single Cell Mining Claim	12/15/2023 0:00	(100 %) Imagine Lithium Inc.		BARBARA LAKE AREA
536781	42E05D069	Single Cell Mining Claim	12/15/2023 0:00	(100 %) Imagine Lithium Inc.		BARBARA LAKE AREA
536782	42E05D049	Single Cell Mining Claim	12/15/2023 0:00	(100 %) Imagine Lithium Inc.		BARBARA LAKE AREA
536783	42E05E079,42E05E080,42E05E059,42E05E060,42E05F041,42E05F042,42E05F043,42E05E039,42E05E040,42E05F021,42E05F022,42E05F023,42E05E019,42E05E020,42E05F001,4	Multi-cell Mining Claim	12/15/2022 0:00	(100 %) Imagine Lithium Inc.		LAKE JEAN AREA
536786	42E05E167	Single Cell Mining Claim	12/15/2022 0:00	(100 %) Imagine Lithium Inc.		LAKE JEAN AREA
536787	52H011099	Single Cell Mining Claim	12/15/2023 0:00	(100 %) Imagine Lithium Inc.		HANSON LAKE AREA
566509	42E05D006	Single Cell Mining Claim	12/15/2023 0:00	(100 %) Imagine Lithium Inc.		BARBARA LAKE AREA
566510	42E05D007	Single Cell Mining Claim	12/15/2023 0:00	(100 %) Imagine Lithium Inc.		BARBARA LAKE AREA
566511	42E05D008	Single Cell Mining Claim	12/15/2023 0:00	(100 %) Imagine Lithium Inc.		BARBARA LAKE AREA
566512	42E05D028	Single Cell Mining Claim	12/15/2023 0:00	(100 %) Imagine Lithium Inc.		BARBARA LAKE AREA
566513	42E05D029	Single Cell Mining Claim	12/15/2023 0:00	(100 %) Imagine Lithium Inc.		BARBARA LAKE AREA
566539	42E05D048	Single Cell Mining Claim	12/15/2023 0:00	(100 %) Imagine Lithium Inc.		BARBARA LAKE AREA
566540	42E05D026	Single Cell Mining Claim	12/15/2023 0:00	(100 %) Imagine Lithium Inc.		BARBARA LAKE AREA
566541	42E05D027	Single Cell Mining Claim	12/15/2023 0:00	(100 %) Imagine Lithium Inc.		BARBARA LAKE AREA
566542	42E05D009,42E05E386,42E05E387,42E05E3	Multi-cell Mining Claim	12/15/2023 0:00	(100 %) Imagine Lithium Inc.		BARBARA LAKE AREA
566543	42E05D031	Single Cell Mining Claim	12/15/2023 0:00	(100 %) Imagine Lithium Inc.		BARBARA LAKE AREA
566544	42E05D030	Single Cell Mining Claim	12/15/2023 0:00	(100 %) Imagine Lithium Inc.		BARBARA LAKE AREA
566765	52H011157,52H011158,52H011159,52H011160,52H011137,52H011138,52H011139,52H011140,52H011117,52H011118,52H011119,52H0	Multi-cell Mining Claim	12/15/2023 0:00	(100 %) Imagine Lithium Inc.		COSGRAVE LAKE AREA,HANSON LAKE AREA
566766	52H011098,52H011100,52H011078,52H011079,52H011080,52H011058,52H011059,52H011060,52H011038,52H011039,52H011040,42E04L061,42E04L021	Multi-cell Mining Claim	12/15/2023 0:00	(100 %) Imagine Lithium Inc.		COSGRAVE LAKE AREA,HANSON LAKE AREA,KEEMLE LAKE AREA
698251	42E04L041	Single Cell Mining Claim	12/18/2023 0:00	(100 %) Imagine Lithium Inc.		COSGRAVE LAKE AREA,HANSON LAKE AREA
755362	42E05D114	Single Cell Mining Claim	8/9/2023 0:00	(100 %) Imagine Lithium Inc.		BARBARA LAKE AREA
755363	42E05D194	Single Cell Mining Claim	8/9/2023 0:00	(100 %) Imagine Lithium Inc.		BARBARA LAKE AREA

Appendix 2. Detailed summary of the exploration work completed on the Jackpot North A and B during the course of the 2022 summer period.

Date	Claim	Cell Grid ID	Day on Claim	Traverse (m)	Structures	Rock Type
Jackpot North A						
07-15-2022	536783	42E05E079,42E05E080,42E05E059,42E05E060,42E05F041,42E05F042,42E05F043,42E05E039,42E05E040,42E05F021,42E05F022,42E05F023,42E05E019,42E05E020,42E05F001,42E05F002,42E05F003,42E05K381,42E05K382,42E05K383	1.0	1989		
08-20-2022	536783		1.0	464		
08-21-2022	536783		1.0	1468		8
09-02-2022	536783		1.0	8834	8	74
09-03-2022	536783		1.0	6033		3
09-07-2022	536783		1.0	2483		25
09-08-2022	536783		0.5	3500		22
	Total		6.5	24771	8	132
Jackpot North B						
09-08-2022	536786	42E05E167	0.5	373		
09-11-2022	536786		1.0	2425	1	11
	Total		1.5	2798	1	11

DAILY LOG		
Date	Claim ID	Description
07-15-2022	536783	Wade and Gerhard visited claim 536783 to check access and begin prospecting work.
08-20-2022	536783	Visited claim 536783, not outcrop noted
08-21-2022	536783	Wade prospected claim 536783. Outcrops of Metasedments
09-02-2022	536783	Wade prospected claim 536783. Outcrops of Metasedments in the south and Diorite on the eastern part of the claim. Bedding striking 82-95/dipping 70-75 in metasediment
09-03-2022	536783	Wade prospected claim 536783. Outcrops of Metasedments
09-07-2022	536783	Wade prospected claim 536783. Outcrops of Metasedments in north western part of claim
09-08-2022	536783	Wade prospected claim 536783. Outcrops of Metasedments in north part of claim
09-08-2022	536786	Prospecting claim 536786.
09-11-2022	536786	Prospecting claim 536786. Outcrops of metasediments

Expenditure Details (Receipt entries)															NOTES
Primary Cost Category		Secondary Cost Category	Work Performed		Invoice	Invoice Reference #	Invoice Date DD-MM-YYYY	Billing Unit	Unit Price	# Units	Total Cost (No Tax)	Rounded	Invoice Reference #		
Primary Exploration Activity	Work Subtype	Associated Cost Type	Start Date (DD-MM-YYYY)	End Date											
Prospecting	Grass_Roots_Propecting	Report/Map	February 10, 2022	February 14, 2022	Wade Kornik	WTK 2022 04 30	April 30, 2022	\$/Day	\$ 650.00	2.00	\$ 1,300.00	\$ 1,300	1	Review and Preparation for visit to Claim 536783	
Prospecting	Grass_Roots_Propecting		July 15, 2022	July 15, 2022	Wade Kornik	WTK 2022 07 15	July 15, 2022	\$/Day	\$ 650.00	1.00	\$ 650.00	\$ 650	2	July 15, Days on Claim 536783	
Prospecting	Grass_Roots_Propecting	Personal Transportation	July 15, 2022	July 15, 2022	Wade Kornik	WTK 2022 07 15	July 15, 2022	\$/km	\$ 0.61	164.00	\$ 100.04	\$ 100	2	Pro-rated to CRA allowance	
Prospecting	Grass_Roots_Propecting	Lodging	July 15, 2022	July 15, 2022	Wade Kornik	WTK 2022 07 15	July 15, 2022	\$/night	\$ 89.00	1.00	\$ 89.00	\$ 89	2	1 night accommodation	
Prospecting	Grass_Roots_Propecting	Food	July 15, 2022	July 15, 2022	Wade Kornik	WTK 2022 07 15	July 15, 2022	\$/Day	\$ 50.00	1.00	\$ 50.00	\$ 50	2	pro-rated per diem	
Prospecting	Grass_Roots_Propecting		August 20, 2022	August 24, 2022	Wade Kornik	WTK 2022 08 31	August 31, 2022	\$/Day	\$ 650.00	2.00	\$ 1,300.00	\$ 1,300	3	Days on Claim 536783	
Prospecting	Grass_Roots_Propecting	Personal Transportation	August 20, 2022	August 24, 2022	Wade Kornik	WTK 2022 08 31	August 31, 2022	\$/km	\$ 0.61	656.00	\$ 400.16	\$ 400	3		
Prospecting	Grass_Roots_Propecting	Personal Transportation	August 20, 2022	August 24, 2022	Wade Kornik	WTK 2022 08 31	August 31, 2022	\$/km	\$ 0.61	112.25	\$ 68.47	\$ 68	3	Transport to workplace 8/96 days	
Prospecting	Grass_Roots_Propecting	Lodging	August 20, 2022	August 24, 2022	Wade Kornik	WTK 2022 08 31	August 31, 2022	\$/night	\$ 89.00	2.00	\$ 178.00	\$ 178	3		
Prospecting	Grass_Roots_Propecting	Food	August 20, 2022	August 24, 2022	Wade Kornik	WTK 2022 08 31	August 31, 2022	\$/Day	\$ 50.00	2.00	\$ 100.00	\$ 100	3		
Prospecting	Grass_Roots_Propecting		September 1, 2022	September 8, 2022	Wade Kornik	WTK 2022 09 15	September 15, 2022	\$/Day	\$ 650.00	3.50	\$ 2,275.00	\$ 2,275	4	Days on Claim 536783	
Prospecting	Grass_Roots_Propecting	Personal Transportation	September 1, 2022	September 8, 2022	Wade Kornik	WTK 2022 09 15	September 15, 2022	\$/km	\$ 0.61	820.00	\$ 500.20	\$ 500	4		
Prospecting	Grass_Roots_Propecting	Lodging	September 1, 2022	September 8, 2022	Wade Kornik	WTK 2022 09 15	September 15, 2022	\$/night	\$ 89.00	3.50	\$ 311.50	\$ 312	4		
Prospecting	Grass_Roots_Propecting	Food	September 1, 2022	September 8, 2022	Wade Kornik	WTK 2022 09 15	September 15, 2022	\$/Day	\$ 50.00	3.50	\$ 175.00	\$ 175	4		
Prospecting	Grass_Roots_Propecting		September 9, 2022	September 11, 2022	Wade Kornik	WTK 2022 09 15	September 15, 2022	\$/Day	\$ 650.00	1.50	\$ 975.00	\$ 975	4	Days on Claim 536786	
Prospecting	Grass_Roots_Propecting	Personal Transportation	September 9, 2022	September 11, 2022	Wade Kornik	WTK 2022 09 15	September 15, 2022	\$/km	\$ 0.61	328.00	\$ 200.08	\$ 200	4	receipt attached	
Prospecting	Grass_Roots_Propecting	Lodging	September 9, 2022	September 11, 2022	Wade Kornik	WTK 2022 09 15	September 15, 2022	\$/night	\$ 89.00	1.50	\$ 133.50	\$ 134	4		
Prospecting	Grass_Roots_Propecting	Food	September 9, 2022	September 11, 2022	Wade Kornik	WTK 2022 09 15	September 15, 2022	\$/Day	\$ 50.00	1.50	\$ 75.00	\$ 75	4		
Prospecting	Grass_Roots_Propecting	Rental	May 26, 2022	September 15, 2022	Nigaani Drilling	2022-ATV-001	November 22, 2022	\$/Day	\$ 100.00	6.50	\$ 650.00	\$ 650	5	Days on Claim 536783	
Prospecting	Grass_Roots_Propecting	Rental	May 26, 2022	September 15, 2022	Nigaani Drilling	2022-ATV-001	November 22, 2022	\$/Day	\$ 100.00	1.50	\$ 150.00	\$ 150	5	Days on Claim 536786	
Prospecting	Grass_Roots_Propecting		July 15, 2022	July 15, 2022	GeoConsult	07/30	July 29, 2022	\$/Day	\$ 1,000.00	1.00	\$ 1,000.00	\$ 1,000	6	July 15, Days on Claim 536783	
Prospecting	Grass_Roots_Propecting	Rental	July 15, 2022	July 15, 2022	GeoConsult	xpens 7/2022	July 31, 2022	\$/Week	\$ 600.00	0.14	\$ 85.71	\$ 86	7	July 15, Days on Claim 536783	
Prospecting	Grass_Roots_Propecting	Personal Transportation	November 22, 2022	November 23, 2022	Wade Kornik	WTK 2022 01 23	November 23, 2022	\$/km	\$ 0.61	138.83	\$ 84.69	\$ 85	8	Transport to workplace 8/96 days (return trip)	
Prospecting	Grass_Roots_Propecting	Contractor Mob/Demob	November 22, 2022	November 23, 2022	Wade Kornik	WTK 2022 01 23	November 23, 2022	\$/Day	\$ 650.00	0.29	\$ 189.58	\$ 190	8		
		Report/Map			GEON	2022-40	December 1, 2022		\$ 3,000.00	1.00	\$ 3,000.00	\$ 3,000	9		
Remote Sensing Imagery	LIDAR			June 15, 2022	Clean Harbours	1004205944			\$ 19,658.00	1.00	\$ 19,658.00	\$ 19,658	10	Cost for this submission have bee pro-rated abased on claim area. See expenditure breakdown	
Remote Sensing Imagery	LIDAR			June 26, 2022	Clean Harbours	1004252906			\$ 19,685.00	1.00	\$ 19,685.00	\$ 19,685	11	Cost for this submission have bee pro-rated abased on claim area. See expenditure breakdown	
Remote Sensing Imagery	Imagery			June 26, 2022	Clean Harbours	1004252906			\$ 29,100.00	1.00	\$ 29,100.00	\$ 29,100	11	Cost for this submission have bee pro-rated abased on claim area. See expenditure breakdown	
											\$ -				
											\$ 82,484	\$ 82,485			