

We are committed to providing [accessible customer service](#).

If you need accessible formats or communications supports, please [contact us](#).

Nous tenons à améliorer [l'accessibilité des services à la clientèle](#).

Si vous avez besoin de formats accessibles ou d'aide à la communication, veuillez [nous contacter](#).

Report on Additional Analysis

Cardiff Township, Ontario

by

R.A MacGregor, P Eng

February 02, 2023

Additional analysis for fluorine and a few rare earths was carried out on grab samples previously collected and analysed by ICP-MS for multi elements. Pulps were retrieved from archives, placed in marked coin envelopes, recorded for previous sample numbers and shipped to Bureau Veritas Labs for analysis

Original sample numbers are listed with assay numbers for fluorine and rare earths on the assay sheets. Original assay numbers from previous analysis along with UTM co-ordinates are also listed for reference.

Previous report Afro No. 2.44561, permanent link [20000005931](#) gives details of the original prospecting survey along with maps and sample locations. Reports Afro No. 2.51259 permanent link [20000007173](#) and Afro No. 2.51493 permanent link [20000007268](#) give details of previous analysis by other methods.

HAL – 01 Grabs

Sample No.	IMA	REE	F	Location	UTM	Zone 17
3001	1104		137	720807E	4986106N	
3002	1107		138	720795	4986059	
3003	1108		139	720799	4986152	
3004	1103	878	085	720798	4986202	
3005	1100		140	720800	4986255	
3006	1094	48	086	720801	4986312	
3007	1099		141	720707	4986436	
3008	1098		152	720693	4986270	
3009	1093	53	154	720695	4986252	
3010	1097		274	720696	4986202	
3011	1096		157	720695	4986096	
3012	1095		158	720691	4986064	
3013	1089		159	720700	4986050	
3014	1086	49	087	720494	4985997	
3015	1109		275	720300	4986166	
3016	1105		277	720299	4986249	
3017	1102		142	720385	4986364	
3018	1110		143	720411	4986295	
3019	1106	879	088	720412	4986271	
3020	1091		144	720401	4986289	
3021	1101	50	153	720502	4986286	
3022	1111	52	156	720613	4986461	

HAL – 01 Grabs

Sample No.	IMA	REE	F	Location	UTM	Zone 17
3023	1090		092	721207E	4986677N	
3024	1092		160	721003	4986443	
3025	1088	51	093	721115	4986473	
3026	1087		244	721682	4986644	
3027	914		145	721981	4987837	
3028	sn	sn	089	722023	4987864	
3029	915		146	722042	4987902	
3030	1016	44	090	722043	4988031	
3031	sn	sn	091	722042	4988025	
3032	sn	sn	150	722042	4988025	
3033	sn	sn	151	722042	4988025	
3034	sn	sn	306	722035	4988020	
3035	sn	sn	161	721794	4989323	
3036	963		162	721798	4989328	
3037	962		163	721756	4989283	
3038	916		164	721859	4989181	
3039	1356		165	722164	4988675	
3040	sn	sn	147	722187	4988652	
3041	961	29	148	722255	4988459	
3042	sn	sn	245	722039	4988458	
3043	1023		149	721903	4988488	
3044	sn	sn	271	721821	4988285	

HAL – 01 Grabs

Sample No.	IMA	REE	F	Location	UTM	Zone 17
3045	1022		155	721786	4988523	
3046	960	28	166	721845	4988550	
3047	917		167	721857	4988658	
3048	899		168	721782	4988648	
3049	900		169	722025	4988810	
3050	sn	sn	170	722070	4988839	
3051	918		177	722067	4988627	
3052	1021	142	176	722043	4988629	
3053	919		272	721867	4988897	
3054	959		273	721904	4988928	
3055	953		178	722094	4988944	
3056	1020		179	722096	4988933	
3057	sn	sn	300	722094	4988979	
3058	954		301	721966	4989278	
3059	955		288	721941	4989261	
3060	1019		289	722064	4989299	
3061	920		292	722254	4988899	
3062	sn	sn	291	722287	4988771	
3063	sn	sn	302	722256	4988764	
3064	1018		098	Trench 1		
3065	956	8	095	""		
3066	sn	sn	094	"		

HAL – 01 Grabs

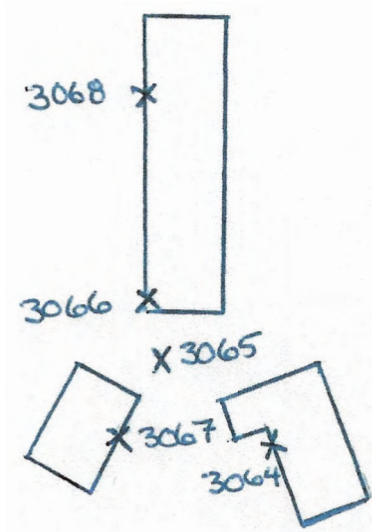
Sample No.	IMA	REE	F	Location	UTM	Zone 17
3067	sn	sn	096	Trench 1		
3068	sn	sn	097	"		
3069	957	7	293	Trench 3		
3070	sn	sn	287	"		
3071	958	6	294	"		
3072	921		290	"		
3073	1071	45	295	"		
3074	sn	sn	305	Trench 4		
3075	sn	sn	296	"		
3076	964	9	298	"		
3077	922		299	"		
3078-79	1015	46	297	Trench 5		
3080	923	852	133	Trench 6		
3081	925	853	134	"		
3082	965	854	135	"		
3083	924	855	136	"		
3084	sn	sn	303	"		

Sn – sample number

Trench 1

1:100

x Sample location



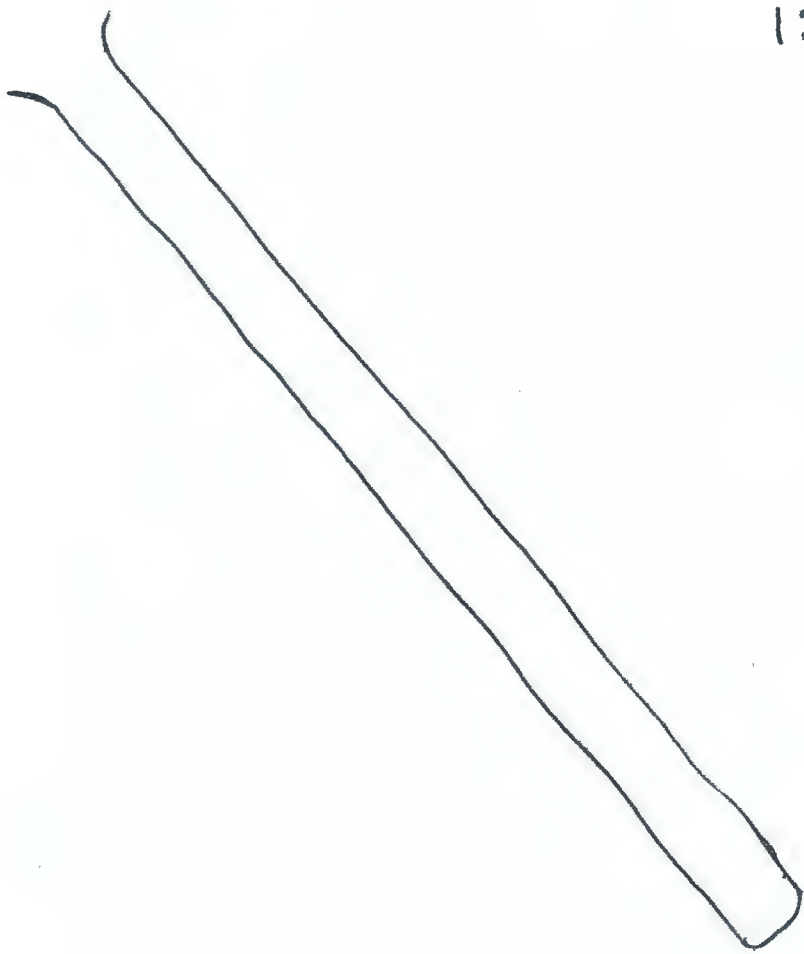
UTM - NAD83 ZONE 17
721990 E 4988012 N

Trench 2

UTM - NAD83 - ZONE 17
722020 E , 4988010 N



1:100



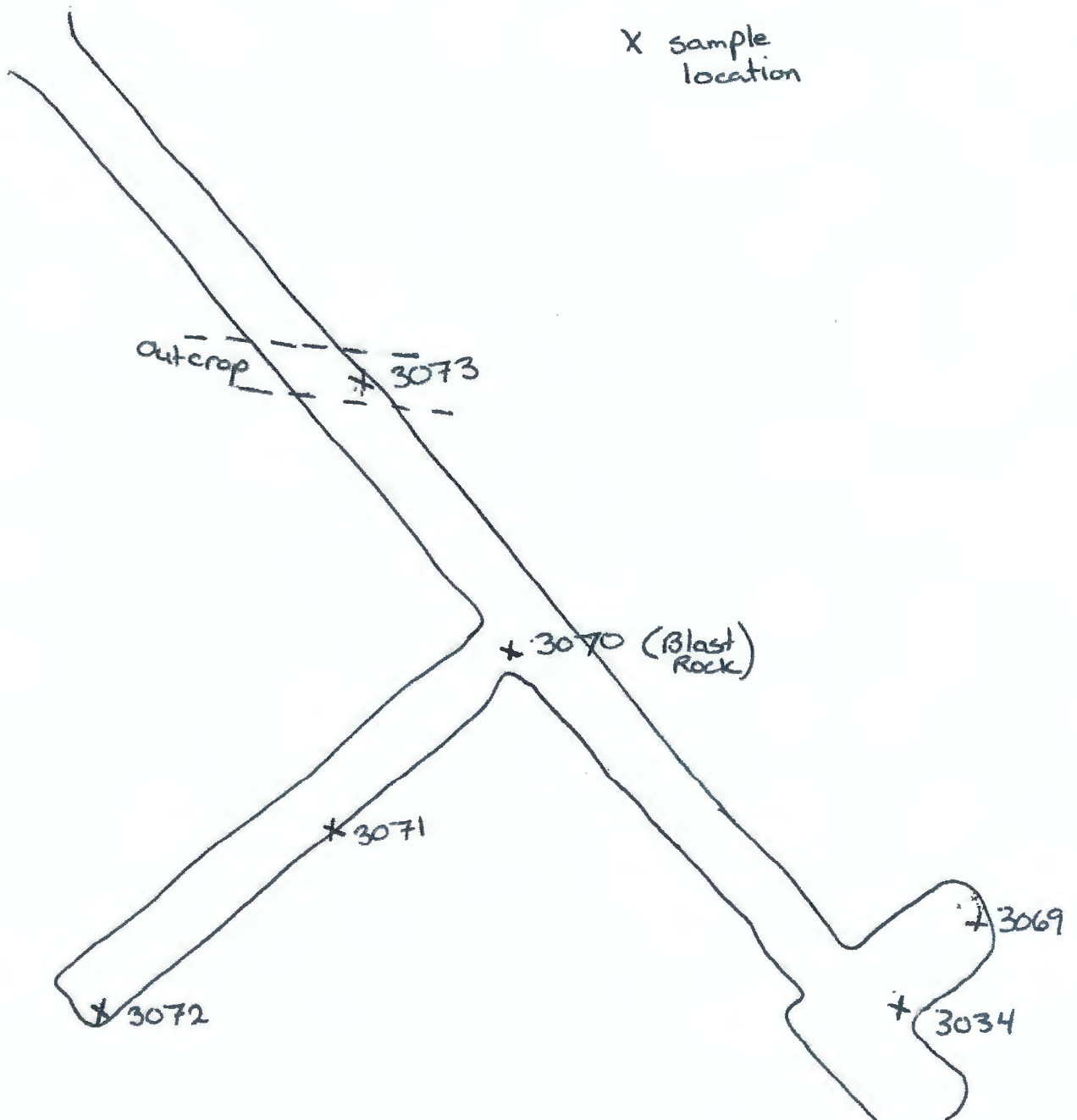
Trench 3

UTM-NAD 83 - ZONE 17
722025E 4988018N



1:100

X sample location



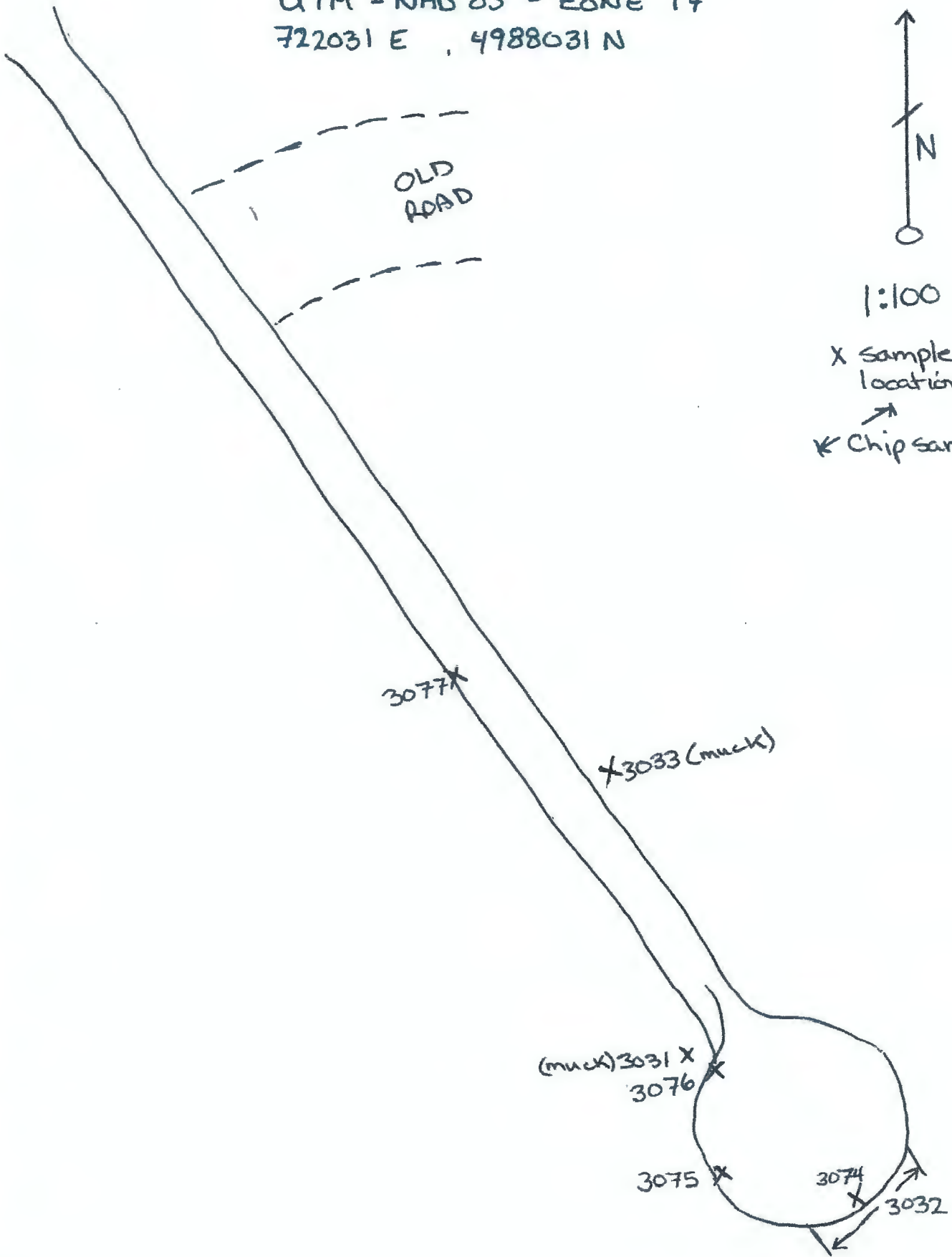
Trench 4

UTM - NAD 83 - ZONE 17
722031 E , 4988031 N



1:100

X Sample location
↗ Chip sample

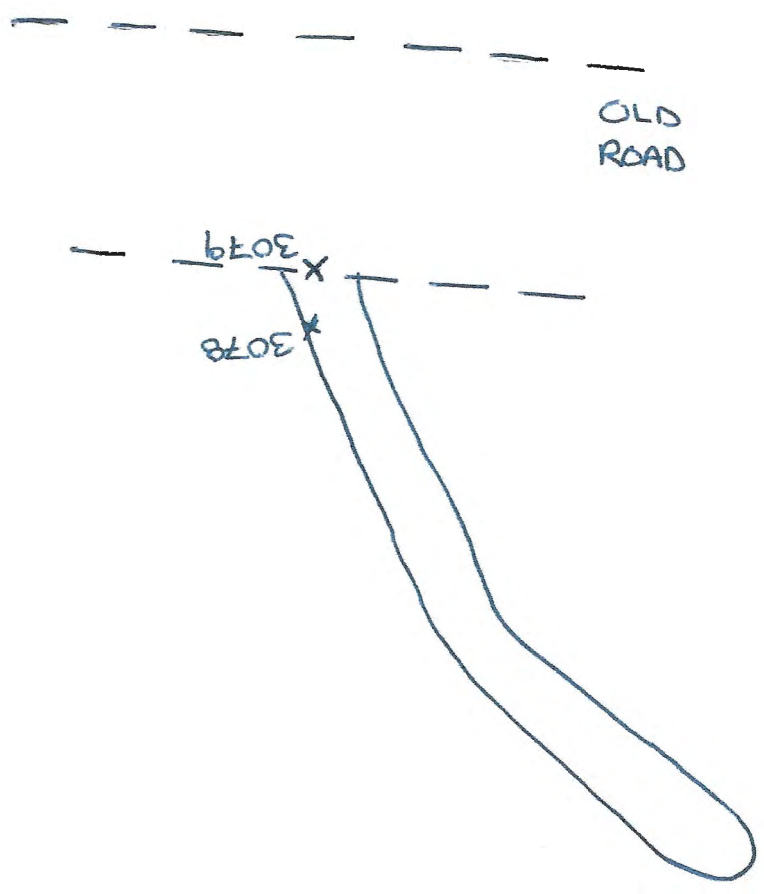


Trench 5
UTM - NAD 83 - ZONE 17
722035 E 4988021 N



1:100

X Sample location



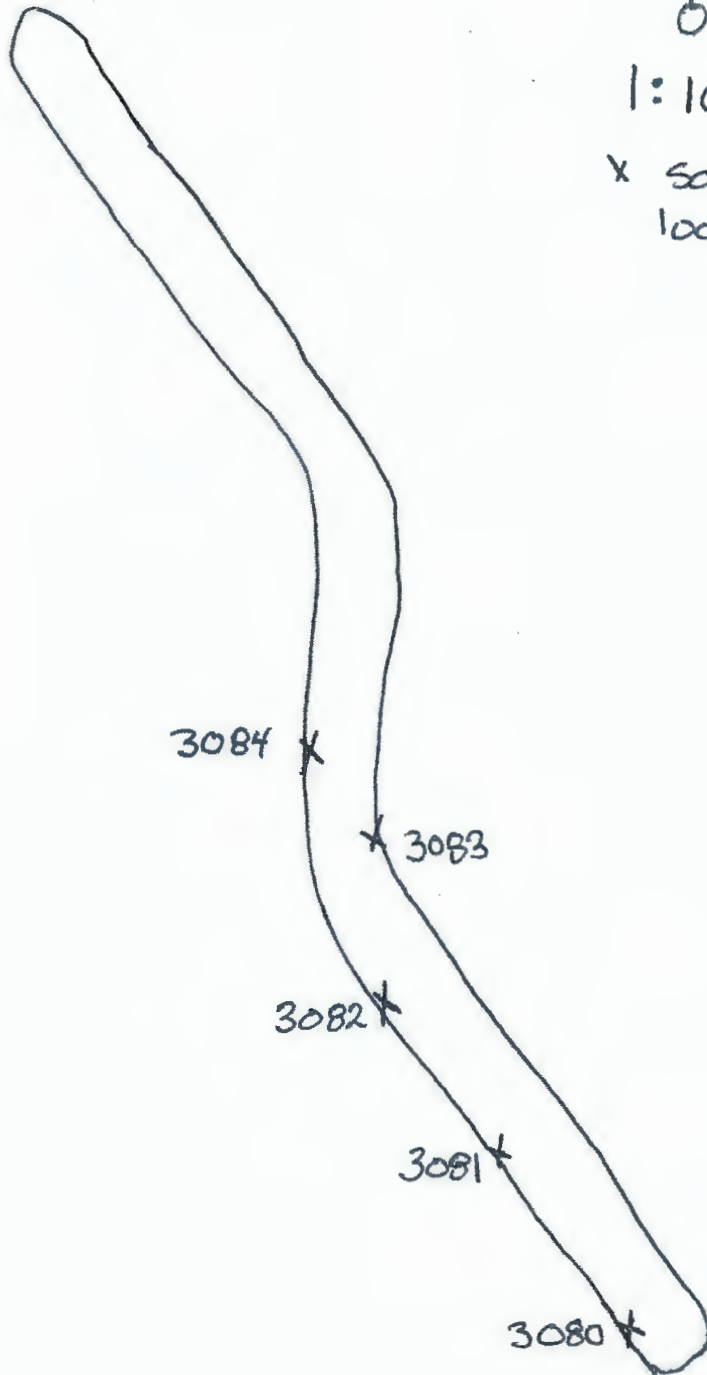
Trench 6

UTM - NAD83 - ZONE 17
722055 E 4988049 N



1:100

x Sample location



Costs

Analysis	REE	4 samples @38.90	155.60
	F	56 samples @25.80	1444.80
	F	27 samples @29.15	787.05
Shipping		June 15/22 – Nov. 21/22 22hrs@50/hr	1100.00
Report		Feb. 02, 2023	100.00
		Total	2587.45