

We are committed to providing [accessible customer service](#).

If you need accessible formats or communications supports, please [contact us](#).

Nous tenons à améliorer [l'accessibilité des services à la clientèle](#).

Si vous avez besoin de formats accessibles ou d'aide à la communication, veuillez [nous contacter](#).

WORK REPORT
On the
CHAMPION MINE PROJECT
HAYCOCK TOWNSHIP
KENORA MINING DIVISION
For
JOSHUA GOLD RESOURCES INC.

Submitted by: Steve Anderson
2041663 Ontario Ltd.
VISION EXPLORATION
1780 Coyote Ridge Road
Crystal Falls, Ontario
P0H 1L0
Phone: 705-266-4703
Email: visionexploration@persona.ca

February 2023

TABLE OF CONTENTS

<u>Page #</u>	<u>Contents</u>
3	Introduction
5	Location and access
5	Personnel
6	Previous work
6	Claims
9	Work program
9	Results
19	Recommendations and conclusions
20	Certificate

Figures

1	Location map
2	Regional location map
3	Claim Sketch
4	Prospecting sketch

Appendix

A	Assay Certificate
---	-------------------

INTRODUCTION

The following report will deal with the results of a preliminary prospecting program carried out on the Champion Mine Project on behalf of Joshua Gold Inc. The property consists of 8, contiguous, single cell mining claims located in Haycock Township, Kenora Mining Division. The work was carried out on a contract basis by Vision Exploration.

A total of 4 travel days and 1 field day were spent by two individuals, in an attempt to locate the historic Champion Mine Showing. A total of 11 grab samples were taken from the property, all of which were sent for gold assay. The purpose of this program was to locate and confirm the previously reported gold occurrence as well as the associated gold values. This work was carried out from October 12th to 16th, 2022.

This report will deal with the results of the preliminary prospecting program conducted on the above-mentioned property.



CHAMPION MINE PROJECT

Location Map

Figure #1

LOCATION AND ACCESS

The Champion Mine consists of 8 contiguous, single cell mining claims located in the south-western portion of Haycock Township, Kenora Mining Division (Figure #2). The property is located approximately 10 km south-east of the town of Kenora, Ontario

Access to the property was gained by taking Hwy 17 east from the town of Kenora to the Hwy 17A bypass. Travelling north on Hwy 17A for approximately 4km to UTM 404375mE/5513470mN will take one to where a network of old logging roads head east from the Hwy. From here an ATV was used to travel the old logging roads which provide access to within 25m of the north boundary of claim 545982. (Fig 4)

PERSONNEL

The following people were directly involved in carrying out the preliminary prospecting on the Champion Mine Project.

Prospector
Helper

Steve Anderson
Glenda Anderson

Crystal Falls
Crystal Falls

PREVIOUS WORK

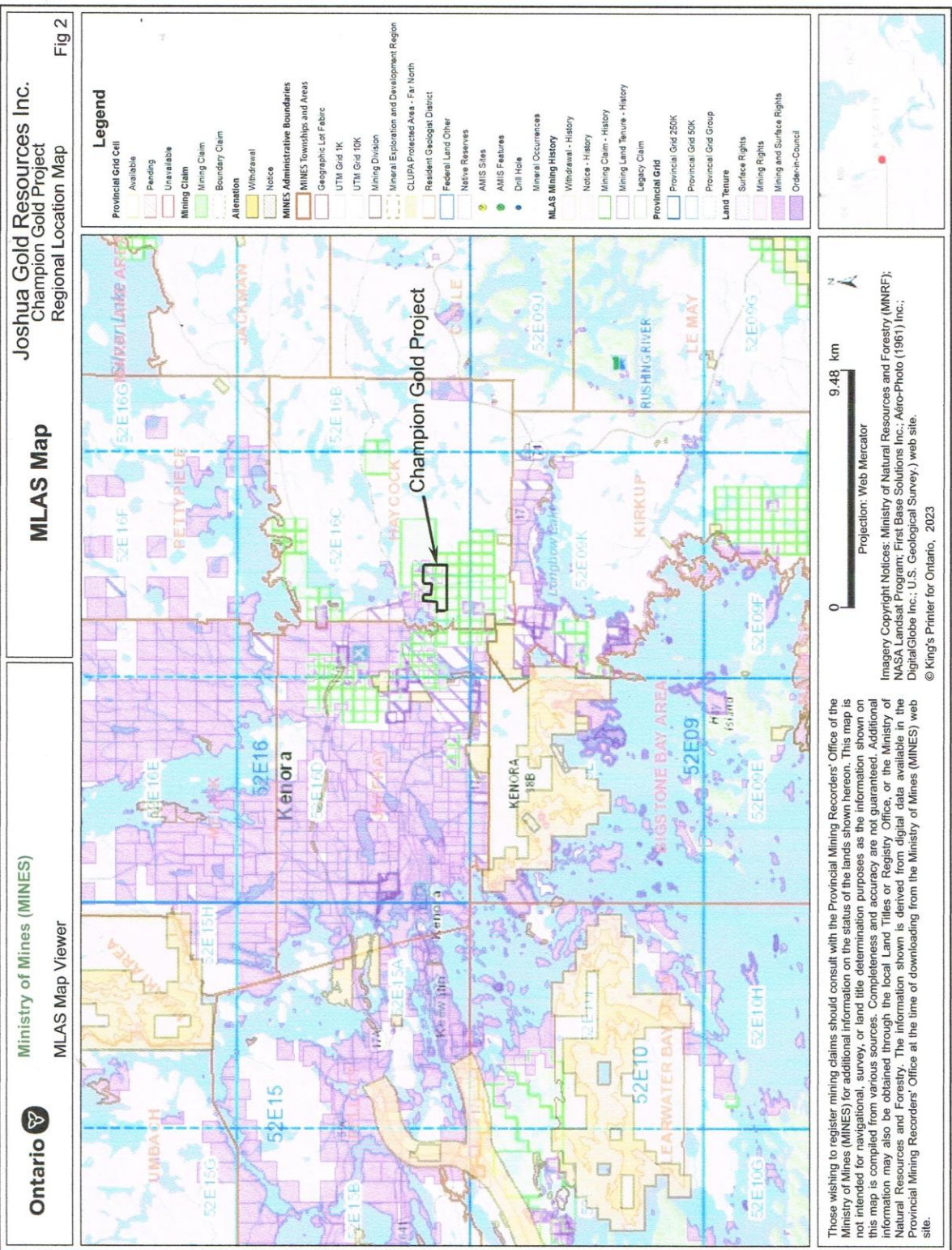
The first phase of exploration to be conducted by Joshua Gold Resources Inc. The claims that make up the Champion Mine Project have had the following historic work programs conducted, as reported on the Joshua Gold Resources Inc. web site. (www.joshuagoldresources.com)

The Champion Mine was discovered in 1898. Historical records are sketchy, but in 1926, 231 tons of ore was milled, producing 107 ounces of gold and 15 ounces of silver. Fred Sharpley, P. Geo, describes the Champion Mine's geology: "The Haycock Gold Property consists of northeast trending Island Lake Quartz Diorite and mafic volcanics to the south. Shearing at 030 degrees later occurred in both rock types with banded quartz-tourmaline gold mineralization." His description goes on to state, "The Champion Mine Shaft on the Silverman Zone was sunk to a depth of 235 feet with an inclined shaft, with levels at 120 and 220 feet. Six diamond drill holes in 1945-46 totalling 230 meters returned gold values over a length of 14 feet assaying 0.40 oz/t, 0.56 oz/t over 11 feet: 0.48 oz/t over 7 feet and 0.176 oz/t over 1.5 feet.

CLAIMS

The claims that make up the Champion Mine Project consist of 8, contiguous, single cell mining claims located in Haycock Township, Kenora Mining Division. The claims are recorded 100% in the name of Joshua Gold Resources Inc. and are as follows:

<u>Claim #</u>	<u>Cells</u>	<u>Due date</u>
545981	1 cell	2023-02-19
545982	1 cell	2023-02-19
545983	1 cell	2023-02-19
545984	1 cell	2023-02-19
545985	1 cell	2023-02-19
545986	1 cell	2023-02-19
604504	1 cell	2023-08-23
604505	1 cell	2023-08-23



WORK PROGRAM

The current work program involved spending 4 days travelling from Crystal Falls and 1 day prospecting on the subject property. The focus of prospecting was the Champion Mine Showing, which involved locating and sampling the old workings. This served two purposes, to confirm the location of the showings and to collect rock samples to confirm the historic gold grades reported.

SURVEY RESULTS

One day was spent on the property by a prospector and helper in an attempt to locate the historic Champion Mines gold showings (Fig. #3). In general, the outcropping observed in the area traversed was shown to be granitic rocks.

The old working were located and took the form of an adit and two incline shafts. The adit is located at the base of a hill and heads south for approximately 40 meters where it meets the bottom of one of the incline shafts, which extends to surface at roughly a 60 degree angle. Sample 19482 was taken where the adit meets the incline shaft. A second incline shaft located at the top of the hill descends at roughly a 30 degree angle. This adit has lateral working at the same angle that follows a quartz vein that varies in width from 1-2 inches to 2 feet. Samples 19483 to 19489 were taken from the quartz vein within the incline shaft.

A vertical open cut within the granitic rocks was also observed. This seems to have focused on a one foot wide, vertical quartz vein from which sample 1940 was taken. The last area sampled was a gossan zone along the properties northern boundary. Samples 19491 and 19492 were taken from this gossan.

The assay results for all samples taken can be found under appendix A of this report.

The following is a description as well as a UTM location for all samples taken. It should be noted that the UTM coordinates for samples taken from within the adit and incline shaft are the location of the entrance to these features as the GPS would not work underground. All UTM coordinated are in NAD 83.

Sample 19482

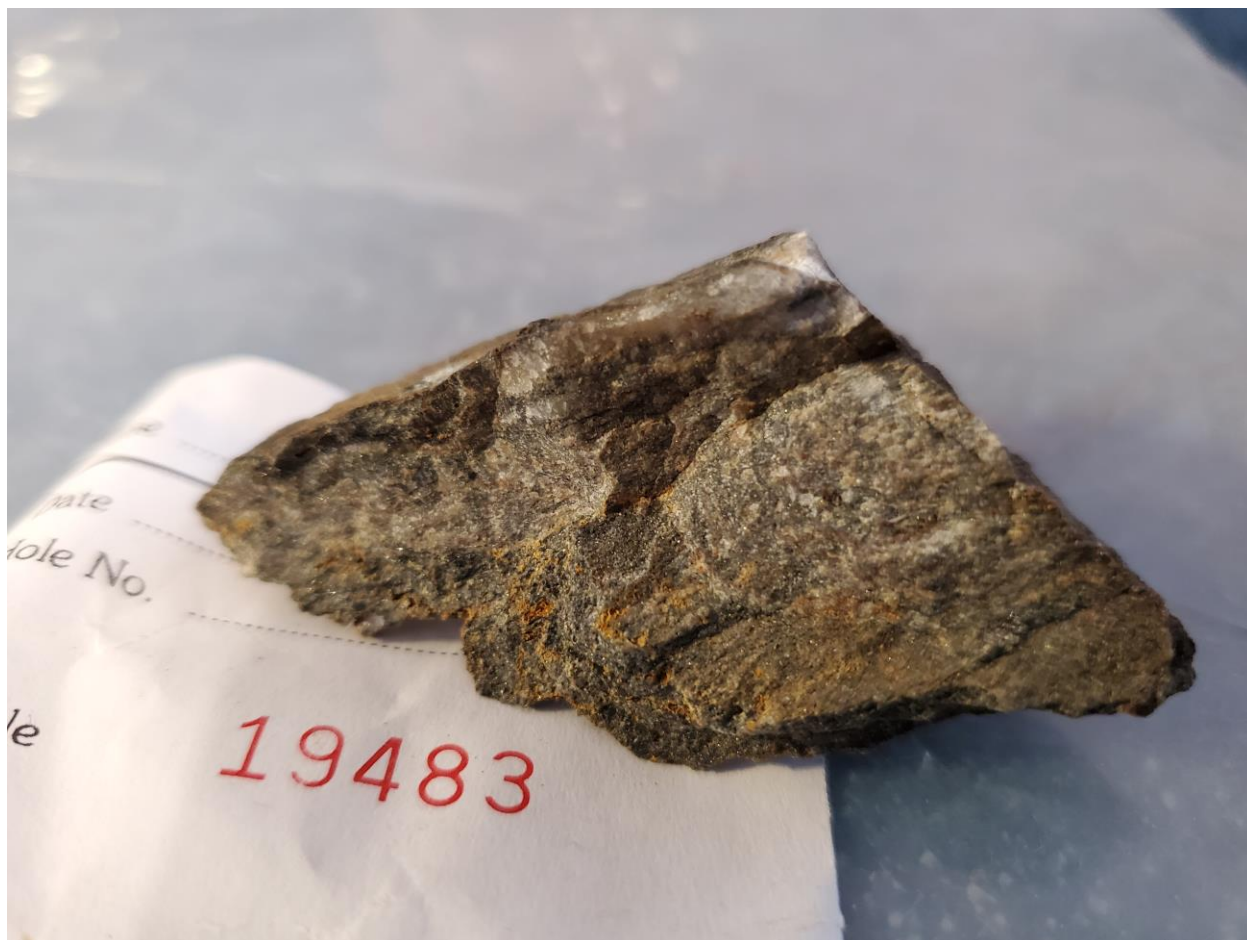
UTM: Zone 15
404927mE
5513462mN

Granitic rock with brown carbonate staining

Sample 19483

UTM: Zone 15
404897mE
5513455mN

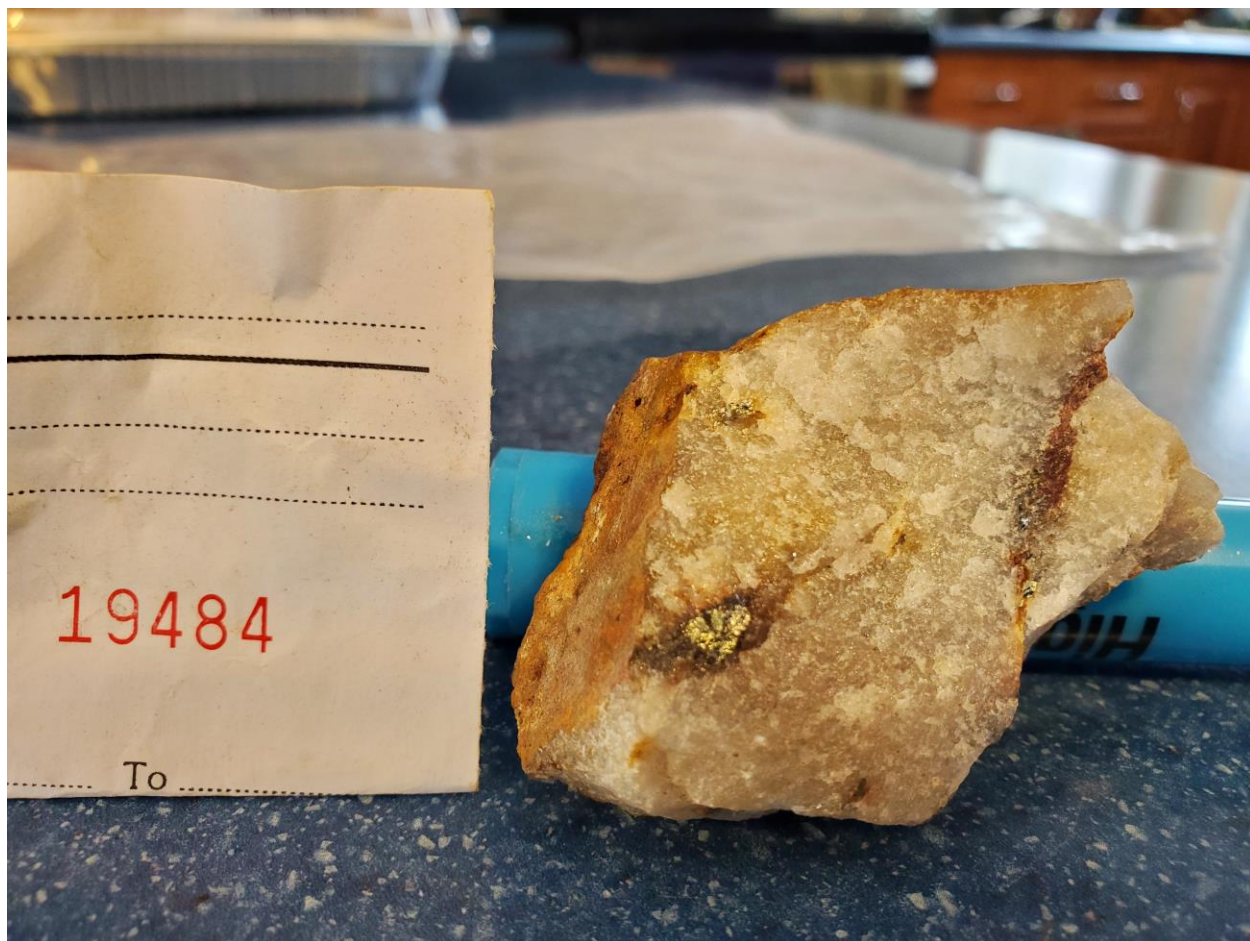
Quartz vein with minor sulphides: 33.6 grams per ton Au



Sample 19484

UTM: Zone 15
404897mE
5513455mN

Quartz vein with sulphide blebs: 123.0 grams per ton Au



Sample 19485

UTM: Zone 15
404897mE
5513455mN

Quartz vein with carbonate staining

Sample 19486

UTM: Zone 15
404897mE
5513455mN

Quartz vein

Sample 19487

UTM: Zone 15
404897mE
5513455mN

Quartz vein with 1-2% sulphides

Sample 19488

UTM: Zone 15
404897mE
5513455mN

Quartz vein

Sample 19489

UTM: Zone 15
404897mE
5513455mN

Quartz vein

Sample 19490

UTM: Zone 15
404889mE
5513495mN

Quartz stringers within granitic rock

Sample 19491

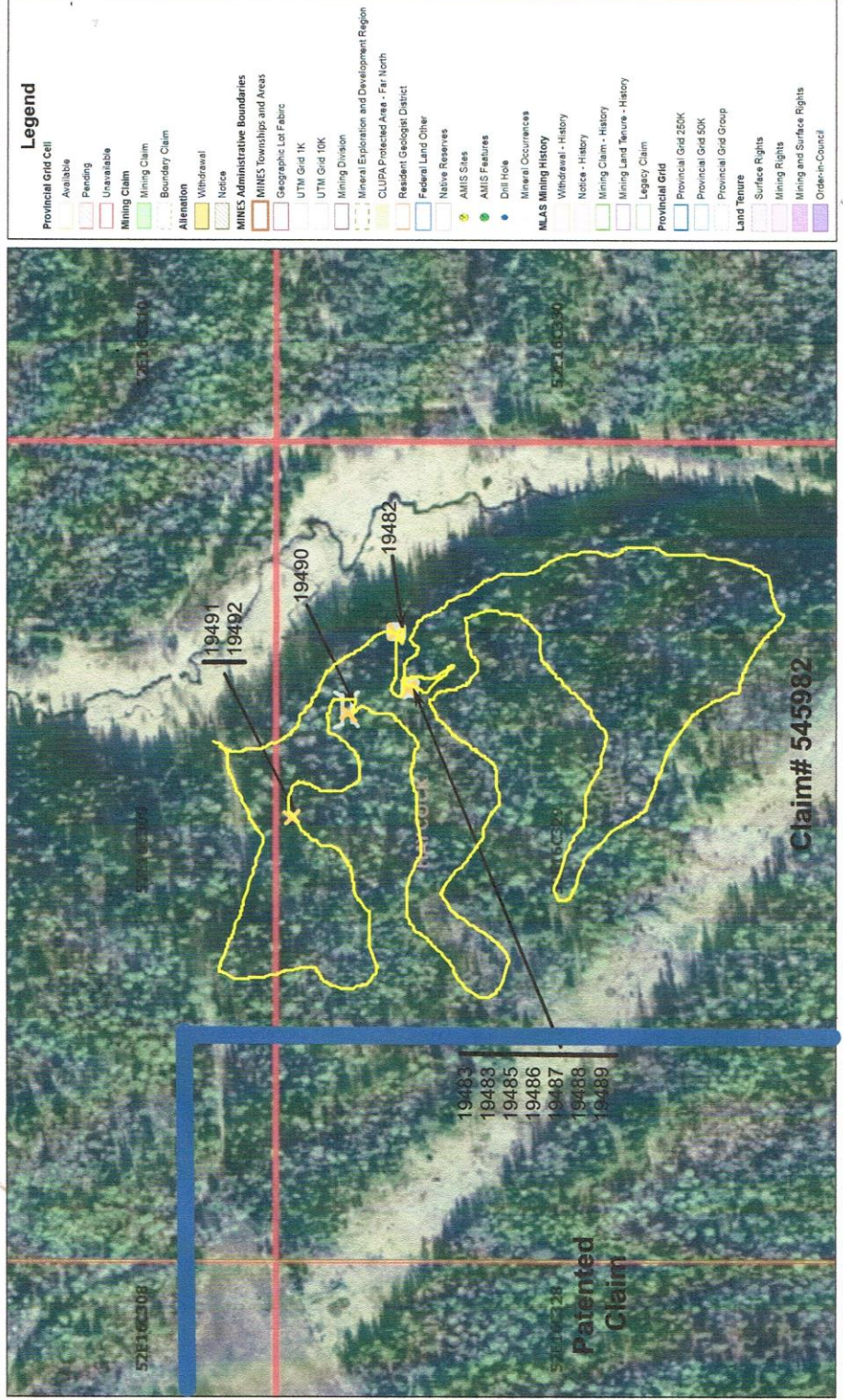
UTM: Zone 15
404837mE
5513525mN

Quartz vein with 5% sulphides

Sample 19492

UTM: Zone 15
404837mE
5513525mN

Quartz vein with 5 % sulphides



Legend
 Provincial Grid Cell
 Available
 Pending
 Unavailable
 Mining Claim
 Mining Claim
 Boundary Claim
 Alienation
 Withdrawal
 Notice
 MINES Administrative Boundaries
 MINES Townships and Areas
 Geographic Lot Fabric
 UTM Grid 1K
 UTM Grid 10K
 Mining Division
 Mineral Exploration and Development Region
 CLUPA Protected Area - Fair North
 Resident Geologist District
 Federal Land Other
 Native Reserves
 AMIS Sites
 AMIS Features
 Drill Hole
 Mineral Occurrences
MLAS Mining History
 Withdrawal - History
 Notice - History
 Mining Claim - History
 Mining Land Tenure - History
 Legacy Claim
 Provincial Grid
 Provincial Grid 250K
 Provincial Grid 50K
 Provincial Grid Group
 Land Tenure
 Surface Rights
 Mining Rights
 Mining and Surface Rights
 Order-in-Council

0 0.15 km
 Projection: Web Mercator

Imagery Copyright Notices: Ministry of Natural Resources and Forestry (MNRF); NASA Landsat Program; First Base Solutions Inc.; Aero-Photo (1961) Inc.; DigitalGlobe Inc.; U.S. Geological Survey; web site.
 © King's Printer for Ontario, 2023

Prospecting traverse
 Open Cut
 Adit/Incline shaft
 Sample Location
 19482 Sample number



Adit Entrance

UTM: Zone 15

404927mE

5513462mN



Incline Shaft Entrance

UTM: Zone 15

404897mE

5513455mN



Open Cut

UTM: Zone 15

404889mE

5513495mN

**Gossan Zone**

UTM: Zone 15

404838mE

5513525mN

RECOMMENDATIONS AND CONCLUSIONS

The prospecting program carried out on the Champion Mine Project was successful in locating and sampling the historic showing.

The samples taken show the subject claims occur within a geological environment favourable for gold deposition with two of the samples returning high grade gold values of 33.6 and 123.0 grams per ton. Both these values were obtained from a relatively flat lying quartz vein (30 degrees) within the incline shaft. This vein would appear to have been the focus of the historic workings.

Additional prospecting should be carried out on the remainder of the property to search for additional historic workings. Detailed geological mapping and sampling should be conducted, focusing on the high-grade quartz vein. All data should then be compiled and if warranted, a diamond drill program be carried out.

CERTIFICATION

I, Steve Anderson of Crystal Falls, Ontario hereby certifies that:

1. I hold a three-year Geological Technologist Diploma from Sir Sandford Fleming College, Lindsay, Ontario, obtained in May 1981.
2. I have been practising my profession since 1979 in Ontario, Quebec, Nova Scotia, New Brunswick, Newfoundland, NWT, Manitoba, Saskatchewan and Greenland.
3. I have been employed directly with Asamera Oil Inc. Urangellschaft Canada Ltd. Nanisivik Mines Ltd., R.S. Middleton Exploration Services Ltd., Rayan Exploration Ltd and I am currently the owner of Vision Exploration.
4. I have based conclusions and recommendations contained in this report on knowledge of the area, my previous experience and on the results of the fieldwork conducted on the property during October 2022

Dated this 15th day of February 2023
At Crystal Falls, Ontario.

Appendix A
Assay Results



ALS Canada Ltd.
 2103 Dollarton Hwy
 North Vancouver, BC V7H 0A7
 Phone: +1 604 984 0221 Fax: +1 604 984 0218
 www.alsglobal.com/geochemistry

To: JOSHUA GOLD RESOURCES INC.
 883 ISABEL STREET
 WOODSTOCK ON N4S 2A7

Page: 2 - A
 Total # Pages: 2 (A)
 Plus Appendix Pages
 Finalized Date: 13-NOV-2022
 Account: JGSJHFOL

Project: JAFFRAY PROJECT

CERTIFICATE OF ANALYSIS SD22301502

Sample Description	Method Analyte Units LOD	WEI-21 Recvd Wt. kg	AU-AA23 Au ppm	AU-GRA21 Au ppm	CRU-OC Pass2mm %	PUL-OC Pass75um %
19482		0.55	0.385			89.1
19483		0.44	>10.0	33.6	86.7	92.3
19484		0.76	>10.0	123.0		
19485		1.29	0.174			
19486		0.53	0.512			
19487		1.16	1.520			
19488		0.39	0.241			
19489		0.35	0.727			
19490		1.11	0.035			
19491		0.54	0.012			
19492		0.50	0.025			

***** See Appendix Page for comments regarding this certificate *****