

We are committed to providing [accessible customer service](#).

If you need accessible formats or communications supports, please [contact us](#).

Nous tenons à améliorer [l'accessibilité des services à la clientèle](#).

Si vous avez besoin de formats accessibles ou d'aide à la communication, veuillez [nous contacter](#).

Cover

Exploration and Technical report: 2022 Mechanical stripping and pitting program, District of Sudbury, township of Cunningham. Hereinafter called the "Allen Lake project"

Written by Andy Dziadura (409503) for 1537763 Ontario inc. (411961)

Work performed by 1551970 Ontario inc. and Andy Dziadura, work duration 2 days December 29, 2022 and December 30, 2022, total duration 4 days including travel to and from the area. Mobilization by 1551970 Ontario inc.

Technical Report

The Allen Lake Project

The purpose of the work performed was to explore a claim group in Cunningham township, Porcupine mining division consisting of 6 Boundary claims. Claim numbers (105297, 125220, 125221, 188690, 255343, 321748) formally legacy claim # 4275506 the claims are contiguous and are located approximately 100km south west of Timmins Ontario in the district of Sudbury. Access to the claim group is from the Dore road, now sometimes called the Foleyet Timber road that runs north, south between the Sultan road (the westerly extension of Highway #560) and highway # 101, then west and north on an un named road (sometimes called "the Garnet Road") located just south of a bridge that spans the Wakami river at the mile 48 marker, then approximately 10km to an unnamed road at UTM zone 17 379213 E and 5290649 N, then north west approximately .5km on said road to another unnamed road at UTM zone 17 379906 E and 5290855 N then south/west for approximately 1km to enter the claim group from the north side. Access to site was gained through unpatented claim #208609 and then #105297. The commodity looked for Gold (Precious Metal). On claim #105297 an area approximately 4'-0" x 5'-0" at UTM zone 17 378407 E and 5290282 N was cleared to expose the bedrock, depth of overburden was approximately 6" to 9" on average. What appeared to be Swayze greenstone was observed (Basalt rock type), however the colour of this greenstone seemed darker than what would be expected in this area. This was reported in a previous report of work performed in early December 2022 in the same area, quartz veining was also present in this darker Greenstone, width of the veining was average +/- .25". This veining was examined and although a small quantity of what was believed to be Gold was observed, the amount was very small and not in a sufficient quantity to be commercially viable. On the next trip to the site the scrapped area was expanded 4'-0" to the east. In addition to Swayze Greenstone, iron formation with quartz veining approximately .25" was observed (sedimentary rock type), the quartz veining in this iron formation showed very little to no gold, what is believed to be embedded pyrite was observed throughout the iron formation at approximately 1-2%. It is recommended that further exploration work be done on this claim and associated group perhaps in a westerly or southerly direction as the areas are lower in elevation and some transitioning was observed Due to the present findings and the history of this area with the Swayze Huycke gold finding/mine of 1934 in close proximity to this claim group further exploration is warranted.

Claim # 105297 cell # 41015A361
EX PLAN PL-22-00016

NOTES

Cunningham Township
Backpack stripping for gold
work performed Dec 29 and 30
2022 by 1551970 Ontario Inc
Caterpillar 225 Excavator
245.00/hr inc generator and fuel
Dec 29/22 start 9:00 am, stop 5:00 pm
Travel 3 hrs vtm/378407 E
Scrape #1 zone 17 (5290282 N)
overburden 6" to 9"
area 4x5'

Dark coloured Swagge
Greenstone (Basalt) quartz
veining 1/4" average, small
amount of gold, not much in
the quartz veins

Dec 30/22 Same machine 245.00/hr
start 8:30 am stop 4:00 pm

Scrape #2 east side of scrape #1
4' x 5' overburden 6" to 9"
Greenstone swagge (basalt)

in NW area. SE area iron
formation quartz veining little
to no gold in quartz veins
embedded pyrite in iron formation
19 to 290.

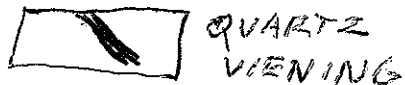
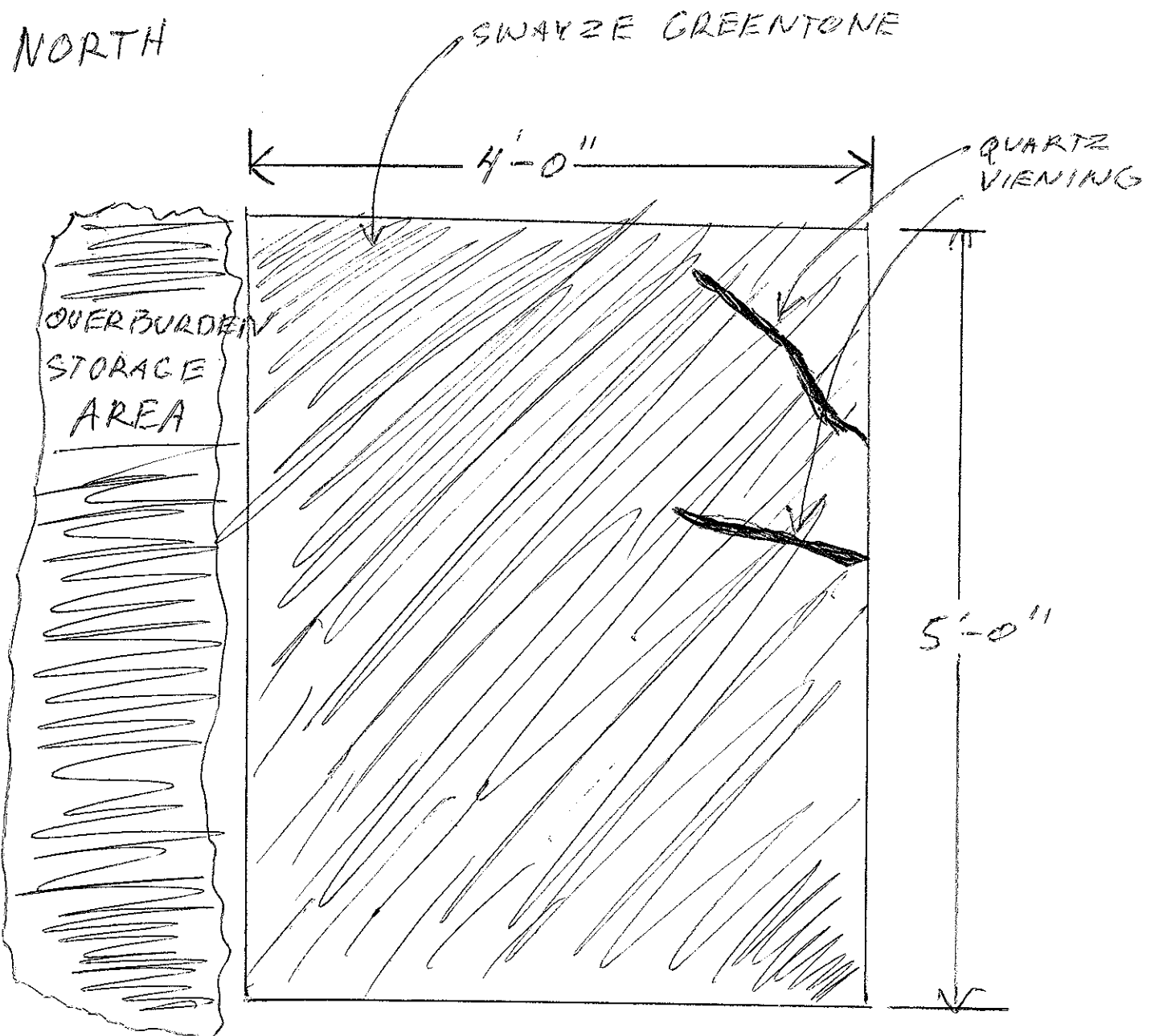
Rock types: Greenstone (Basalt)
Iron formation (Sedimentary)
Gneiss (felsic, igneous)

no outcrops seen at site or
on the way to site. Machine left
here for possible future work.

SCRAPE # 1
ALLEN LAKE PROJECT

DETAIL MAP

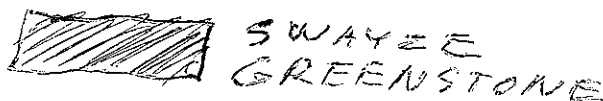
NORTH



QUARTZ
VIENTING

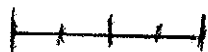


OVERBURDEN
STORAGE AREA



SWAYZE
GREENSTONE

MAP
SCALE 1:12

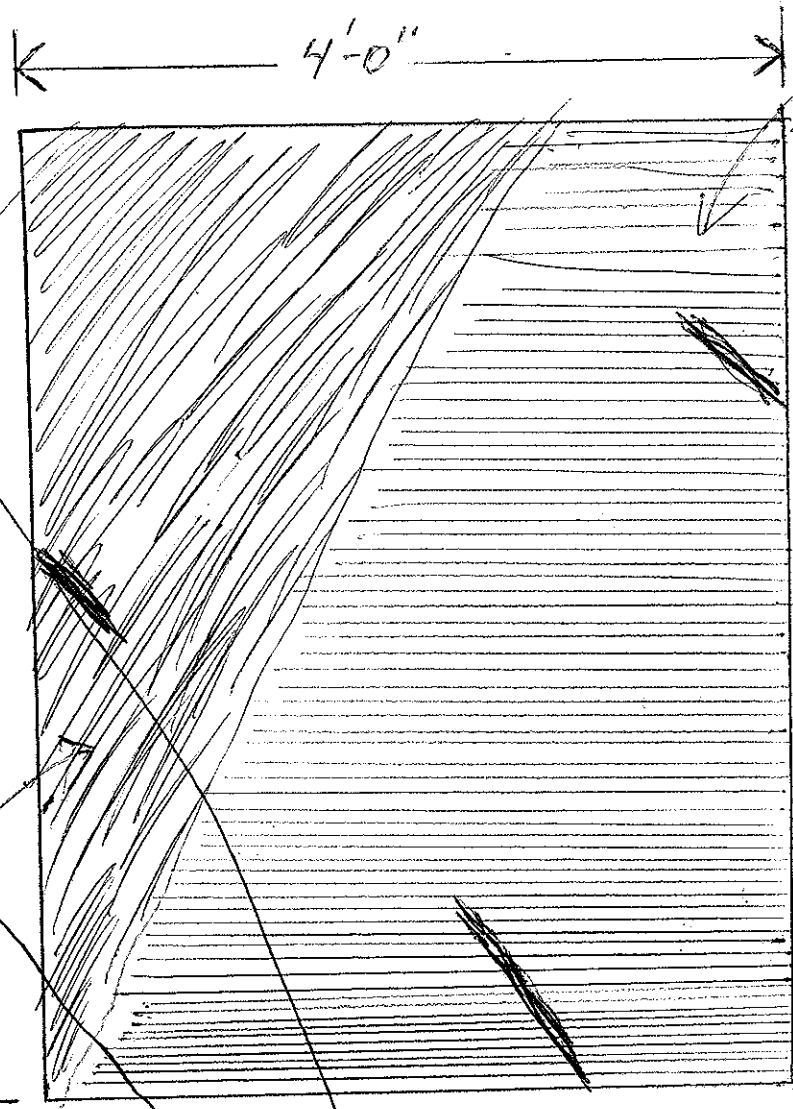


ONE INCH = 12 INCHS / 1 FOOT

↑
NORTH

SCRAPE #2 ALLEN LAKE PROJECT

DETAIL MAP



SWAYZE GREENSTONE

PREVIOUSLY STRIPPED AREA (SCRAPE #1)



OVERBURDEN STORAGE



SWAYZE GREENSTONE

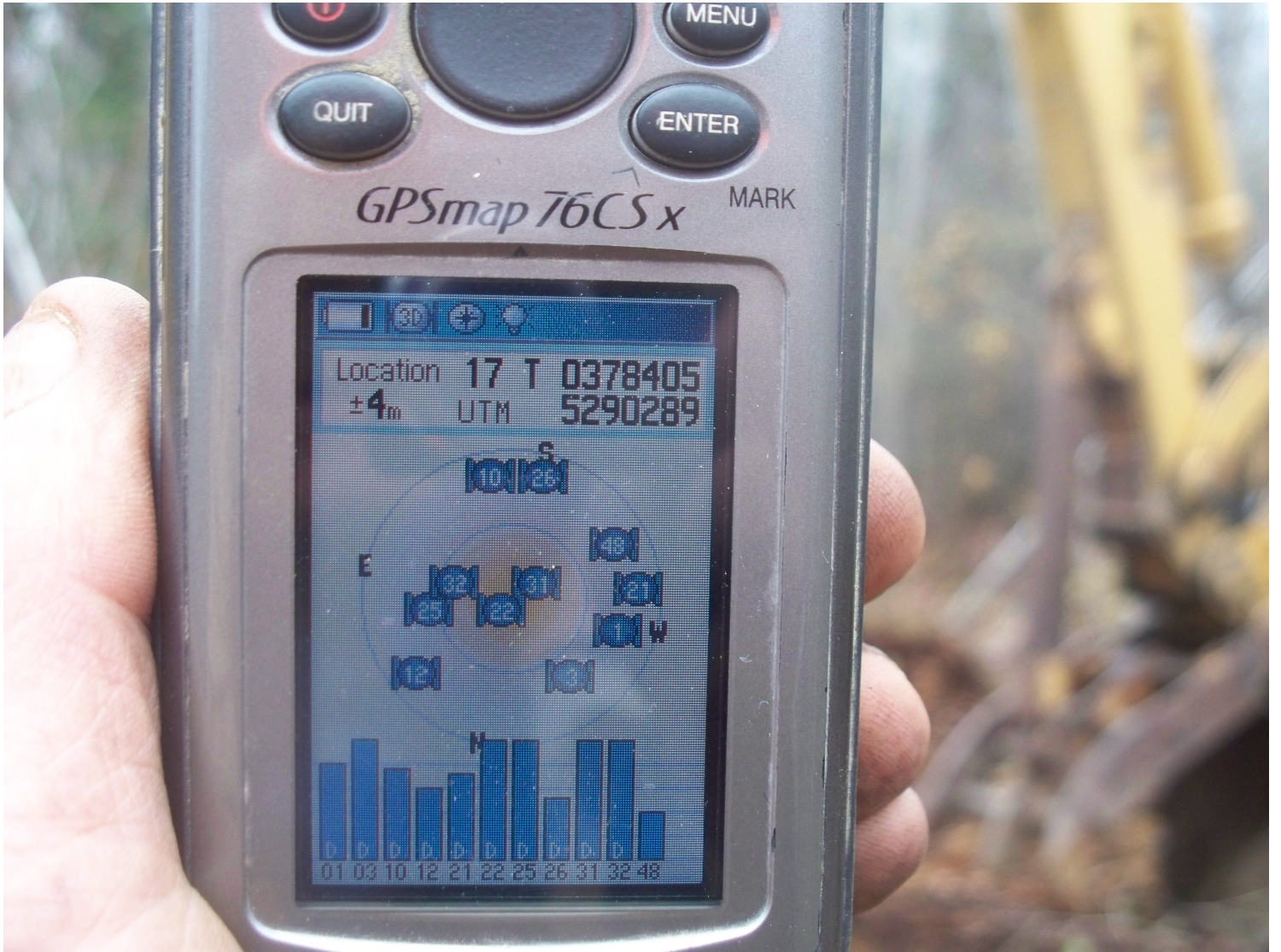


IRON FORMATION



QUARTZ VEINING

MAP SCALE 1:12 ||||| ONE INCH = 12 INCHES / 1 FOOT









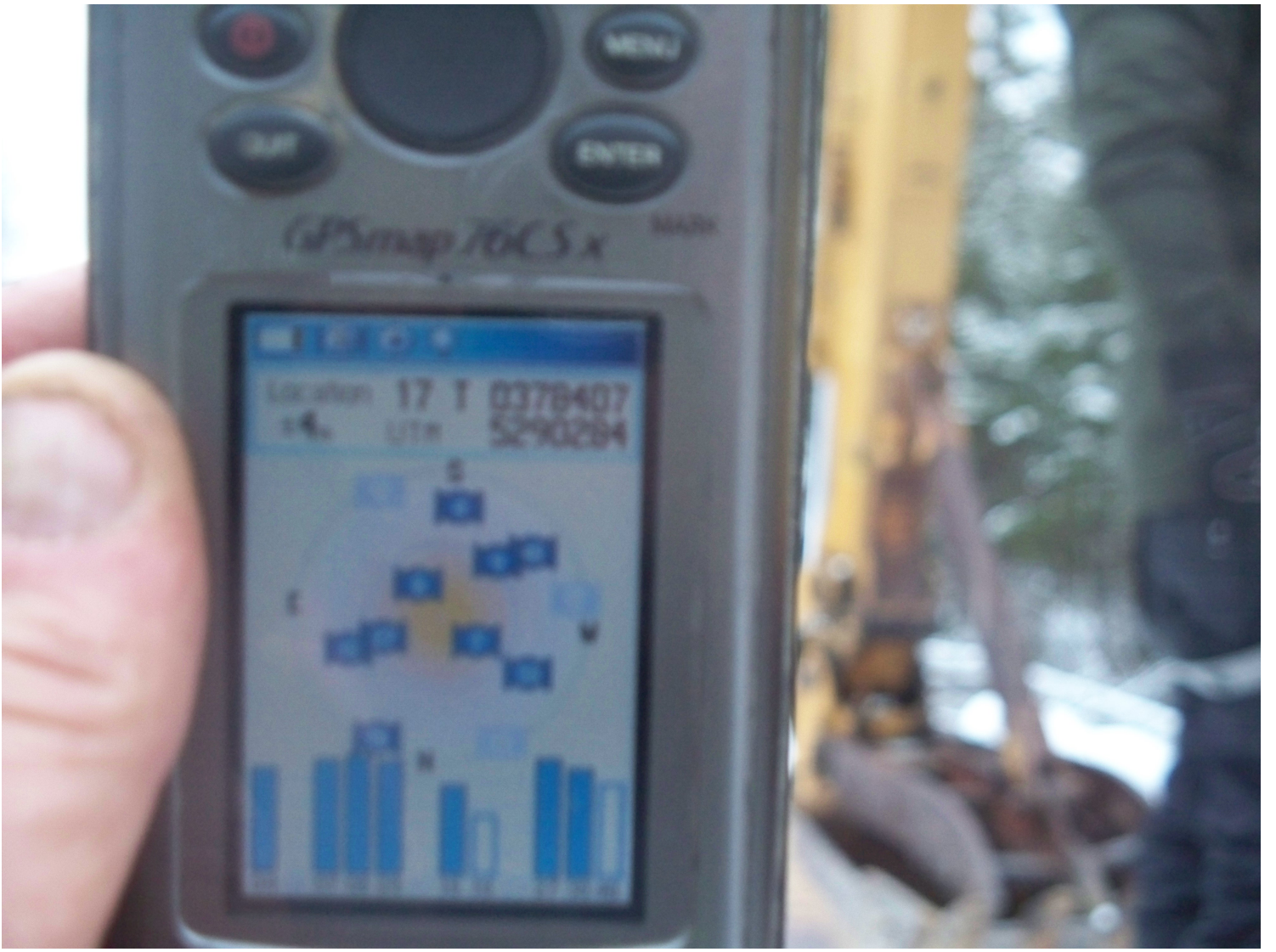


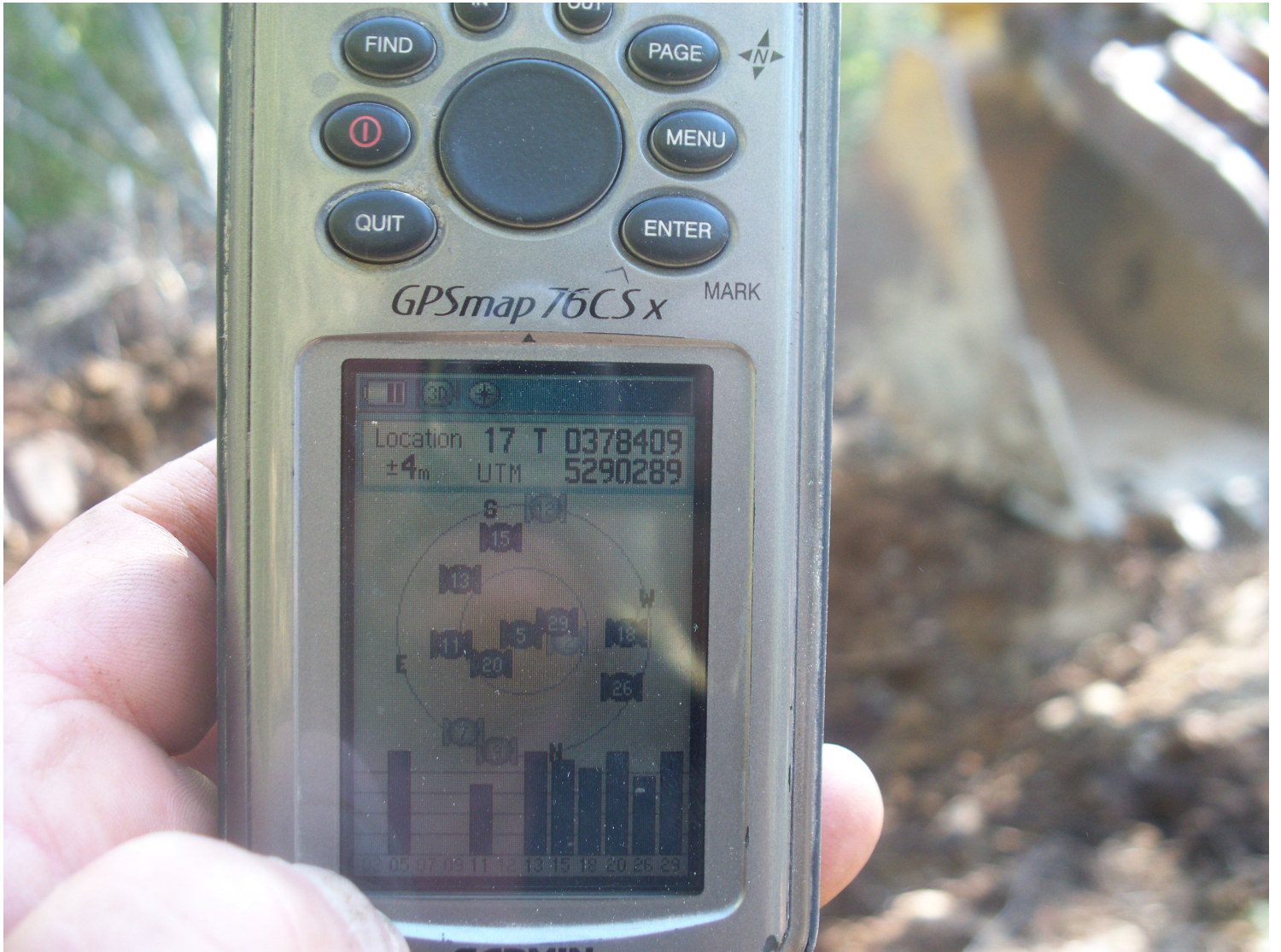


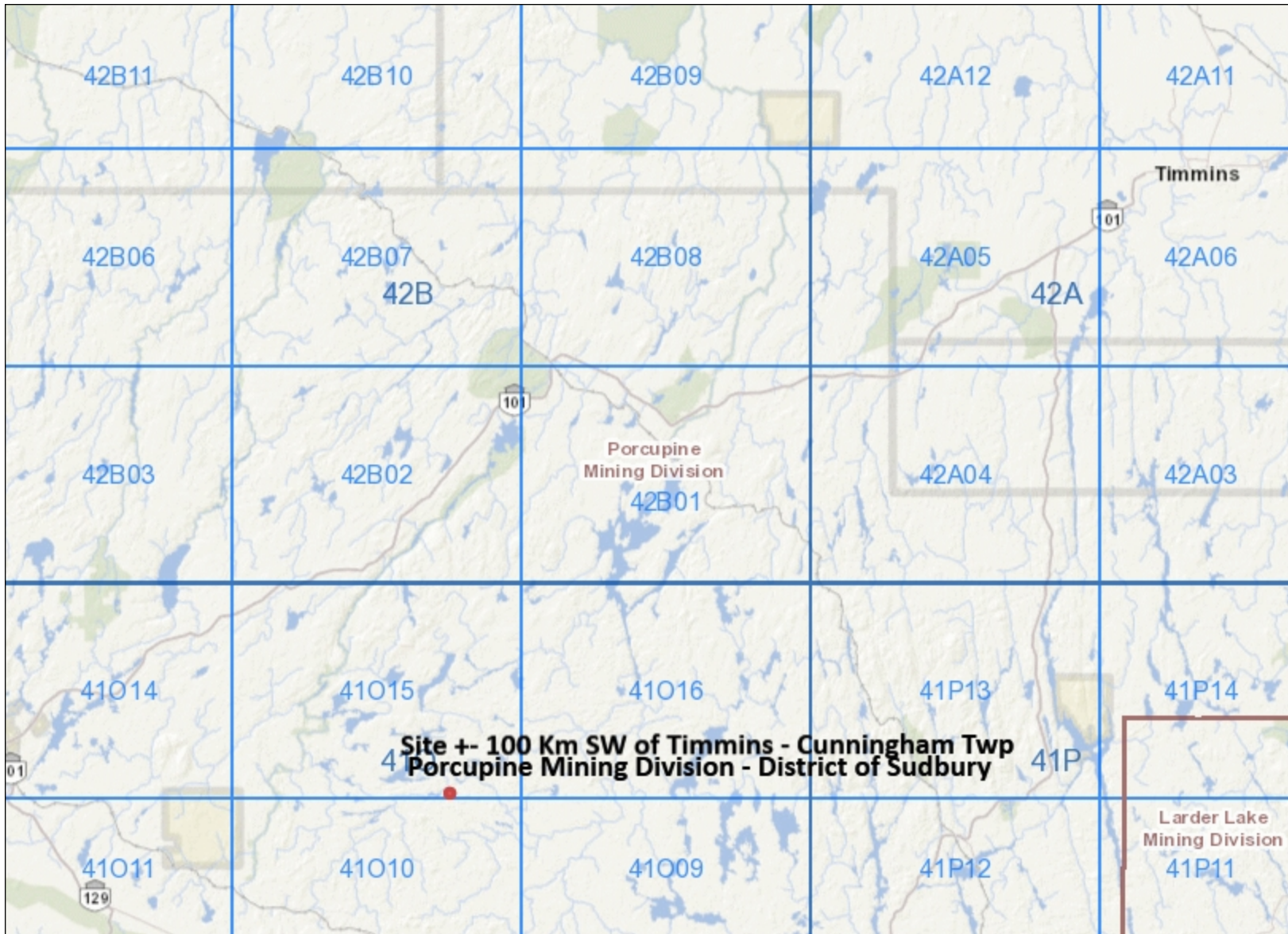








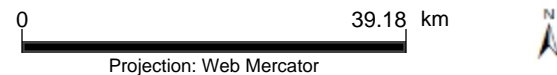




Legend

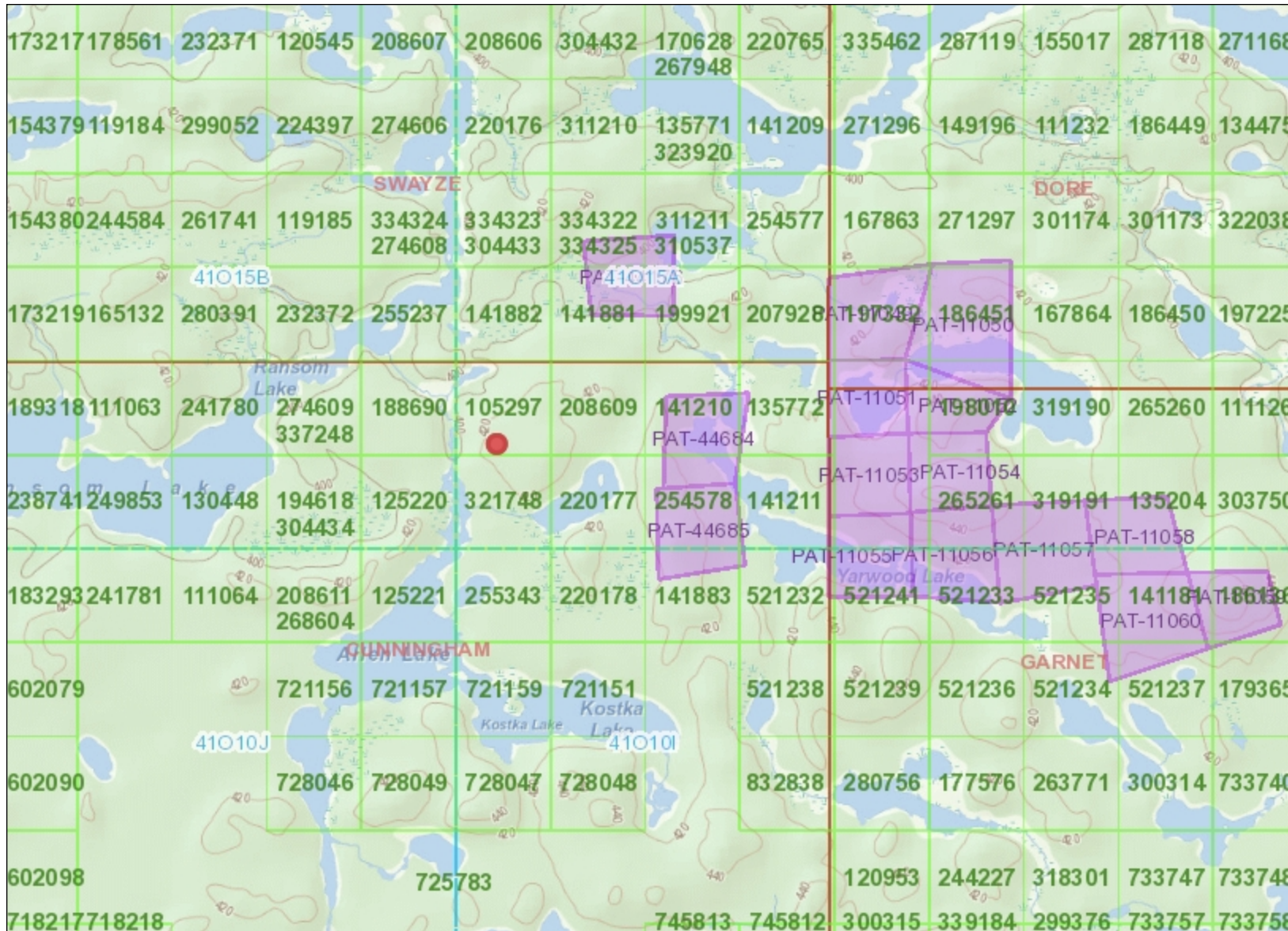
- Provincial Grid Cell**
 - Available
 - Pending
 - Unavailable
- Mining Claim**
 - Mining Claim
 - Boundary Claim
- Alienation**
 - Withdrawal
 - Notice
- MINES Administrative Boundaries**
 - MINES Townships and Areas
 - Geographic Lot Fabric
 - UTM Grid 1K
 - UTM Grid 10K
 - Mining Division
 - Mineral Exploration and Development Region
 - CLUPA Protected Area - Far North
 - Resident Geologist District
 - Federal Land Other
 - Native Reserves
- AMIS**
 - AMIS Sites
 - AMIS Features
 - Drill Hole
 - Mineral Occurrences
- MLAS Mining History**
 - Withdrawal - History
 - Notice - History
 - Mining Claim - History
 - Mining Land Tenure - History
 - Legacy Claim
- Provincial Grid**
 - Provincial Grid 250K
 - Provincial Grid 50K
 - Provincial Grid Group
- Land Tenure**
 - Surface Rights
 - Mining Rights
 - Mining and Surface Rights
 - Order-in-Council

Those wishing to register mining claims should consult with the Provincial Mining Recorders' Office of the Ministry of Mines (MINES) for additional information on the status of the lands shown hereon. This map is not intended for navigational, survey, or land title determination purposes as the information shown on this map is compiled from various sources. Completeness and accuracy are not guaranteed. Additional information may also be obtained through the local Land Titles or Registry Office, or the Ministry of Natural Resources and Forestry. The information shown is derived from digital data available in the Provincial Mining Recorders' Office at the time of downloading from the Ministry of Mines (MINES) web site.



Imagery Copyright Notices: Ministry of Natural Resources and Forestry (MNR); NASA Landsat Program; First Base Solutions Inc.; Aéro-Photo (1961) Inc.; DigitalGlobe Inc.; U.S. Geological Survey.) web site.
© King's Printer for Ontario, 2023





Legend

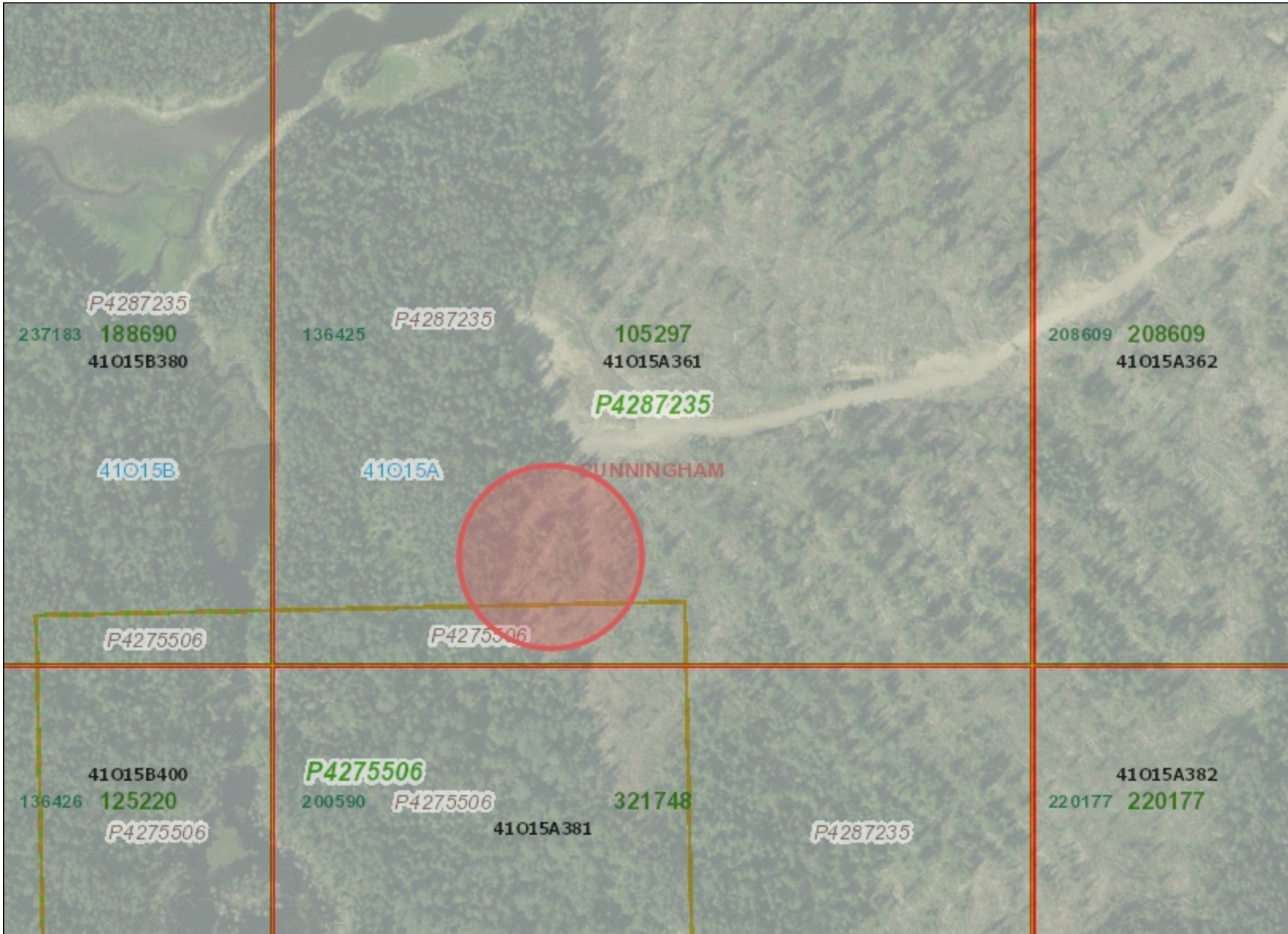
- Provincial Grid Cell**
 - Available
 - Pending
 - Unavailable
- Mining Claim**
 - Mining Claim
 - Boundary Claim
- Alienation**
 - Withdrawal
 - Notice
- MINES Administrative Boundaries**
 - MINES Townships and Areas
 - Geographic Lot Fabric
 - UTM Grid 1K
 - UTM Grid 10K
 - Mining Division
 - Mineral Exploration and Development Region
 - CLUPA Protected Area - Far North
 - Resident Geologist District
 - Federal Land Other
 - Native Reserves
- AMIS Sites**
 - AMIS Sites
 - AMIS Features
 - Drill Hole
 - Mineral Occurrences
- MLAS Mining History**
 - Withdrawal - History
 - Notice - History
 - Mining Claim - History
 - Mining Land Tenure - History
 - Legacy Claim
- Provincial Grid**
 - Provincial Grid 250K
 - Provincial Grid 50K
 - Provincial Grid Group
- Land Tenure**
 - Surface Rights
 - Mining Rights
 - Mining and Surface Rights
 - Order-in-Council

Those wishing to register mining claims should consult with the Provincial Mining Recorders' Office of the Ministry of Mines (MINES) for additional information on the status of the lands shown hereon. This map is not intended for navigational, survey, or land title determination purposes as the information shown on this map is compiled from various sources. Completeness and accuracy are not guaranteed. Additional information may also be obtained through the local Land Titles or Registry Office, or the Ministry of Natural Resources and Forestry. The information shown is derived from digital data available in the Provincial Mining Recorders' Office at the time of downloading from the Ministry of Mines (MINES) web site.



Imagery Copyright Notices: Ministry of Natural Resources and Forestry (MNR); NASA Landsat Program; First Base Solutions Inc.; Aéro-Photo (1961) Inc.; DigitalGlobe Inc.; U.S. Geological Survey.) web site.
© King's Printer for Ontario, 2023





Legend

- Provincial Grid Cell**
 - Available
 - Pending
 - Unavailable
- Mining Claim**
 - Mining Claim
 - Boundary Claim
- Alienation**
 - Withdrawal
 - Notice
- MINES Administrative Boundaries**
 - MINES Townships and Areas
 - Geographic Lot Fabric
 - UTM Grid 1K
 - UTM Grid 10K
 - Mining Division
 - Mineral Exploration and Development Region
 - CLUPA Protected Area - Far North
 - Resident Geologist District
 - Federal Land Other
 - Native Reserves
 - AMIS Sites
 - AMIS Features
 - Drill Hole
 - Mineral Occurrences
- MLAS Mining History**
 - Withdrawal - History
 - Notice - History
 - Mining Claim - History
 - Mining Land Tenure - History
 - Legacy Claim
- Provincial Grid**
 - Provincial Grid 250K
 - Provincial Grid 50K
 - Provincial Grid Group
- Land Tenure**
 - Surface Rights
 - Mining Rights
 - Mining and Surface Rights
 - Order-in-Council

Those wishing to register mining claims should consult with the Provincial Mining Recorders' Office of the Ministry of Mines (MINES) for additional information on the status of the lands shown hereon. This map is not intended for navigational, survey, or land title determination purposes as the information shown on this map is compiled from various sources. Completeness and accuracy are not guaranteed. Additional information may also be obtained through the local Land Titles or Registry Office, or the Ministry of Natural Resources and Forestry. The information shown is derived from digital data available in the Provincial Mining Recorders' Office at the time of downloading from the Ministry of Mines (MINES) web site.



Imagery Copyright Notices: Ministry of Natural Resources and Forestry (MNR); NASA Landsat Program; First Base Solutions Inc.; Aéro-Photo (1961) Inc.; DigitalGlobe Inc.; U.S. Geological Survey.) web site.
© King's Printer for Ontario, 2023

