

We are committed to providing [accessible customer service](#).

If you need accessible formats or communications supports, please [contact us](#).

Nous tenons à améliorer [l'accessibilité des services à la clientèle](#).

Si vous avez besoin de formats accessibles ou d'aide à la communication, veuillez [nous contacter](#).

**CJP EXPLORATION
INC.
and
ALEXIS MORIN**

**Prospecting of
the
METEOR LAKE PROPERTY
Beulah Township, Ontario**

TABLE OF CONTENTS

1.	SURVEY DETAILS.....	3
1.1	PROJECT NAME	3
1.2	CLIENT.....	3
1.3	SUMMARY	3
1.3	LOCATION	3
1.4	ACCESS	4
1.5	PROSPECTING AREA/OWNERSHIP	4
1.6	OWNERSHIP	5
2.	PROSPECTING	6
2.1	OVERVIEW	6
2.2	PLANS & PERMITS	6
2.3	DAILY LOG	6
2.4	PERSONNEL	6
2.5	SURVEY SPECIFICATIONS	6
1.	RESULTS	7
3.1	SUMMARY OF SAMPLES COLLECTED.....	7
3.2	DAY 1 – JUNE 12, 2021	8
3.3	DAY 2 – 14 AUGUST 2021.....	14
2.6	CONCLUSIONS	16
2.7	RECOMMENDATIONS	16

LIST OF APPENDICES

APPENDIX A: STATEMENT OF QUALIFICATIONS

APPENDIX B: INSTRUMENT SPECIFICATIONS

APPENDIX C: LIST OF MAPS (IN MAP POCKET)

LIST OF TABLES AND FIGURES

Figure 1: Location of Meteor Lake Property.....	4
Figure 2: Claim Map with Claims being Prospected.....	5
Figure 3: Traverses conducted on June 12 th , 2021.....	8
Figure 4: Old Bulldozer Found	10
Figure 5: Old Overburden Drill Found.....	11
Figure 6: Gold panned from Historic Pit	13
Figure 7: Traverse conducted on August 14 th , 2021	14

Table 2: List of Cell Claims	5
Table 3: Daily Prospecting Log	6

1. SURVEY DETAILS

1.1 PROJECT NAME

This project is known as the **Meteor Lake Property**.

1.2 CLIENT

CJP Exploration
15 MacDonald St
Larder Lake, Ontario
P0K1L0

1.3 SUMMARY

During the summer of 2021 grassroots prospecting for placer gold was performed on the Meteor Lake Property. The prospecting was performed to determine the possible extent of the placer gold previously noted in the gravel. Prospecting was accomplished by panning a 5 gallon pail of material that was collected at a variety of locations on the claim group.

All coordinates presented in this report are in UTM NAD83 Zone 17N.

1.3 LOCATION

The Meteor Lake Property is located in Baulah Township approximately 30 km south-southwest of Shining Tree, Ontario. The traverse area covers a portion of claims numbered 228904, 156191, 663530, 663533, 663540 and 663553 located in Beulah Township, within the Sudbury Mining Division.



Figure 1: Location of Meteor Lake Property

1.4 ACCESS

Access to the property was attained with a 4x4 truck via highway 560 approximately 19 km west of the Shining Tree. At this point the Meteor Lake Road was travelled south for 31 kilometers to a side road that heads 2.5 kilometers north to the boat launch on Meteor Lake. Other old forestry roads were also taken to allow for additional access.

1.5 PROSPECTING AREA/OWNERSHIP

The claims being prospected are numbered 228904, 156191, 663544, 663530, 663533 663540 and 663553 which are located in Beulah Township, within the Sudbury Mining Division.

1.6 OWNERSHIP

Claim Number	Provincial ID	Holder	Township
228904	41P06D116	CJP Exploration Inc and Alexis Morin	Beulah
156191	41P06D117	CJP Exploration Inc and Alexis Morin	Beulah
663530	41P06C122	CJP Exploration Inc and Alexis Morin	Beulah
663533	41P06C143	CJP Exploration Inc and Alexis Morin	Beulah
663540	41P06C184	CJP Exploration Inc and Alexis Morin	Beulah
663553	41P06D240	CJP Exploration Inc and Alexis Morin	Beulah

Table 1: List of Cell Claims

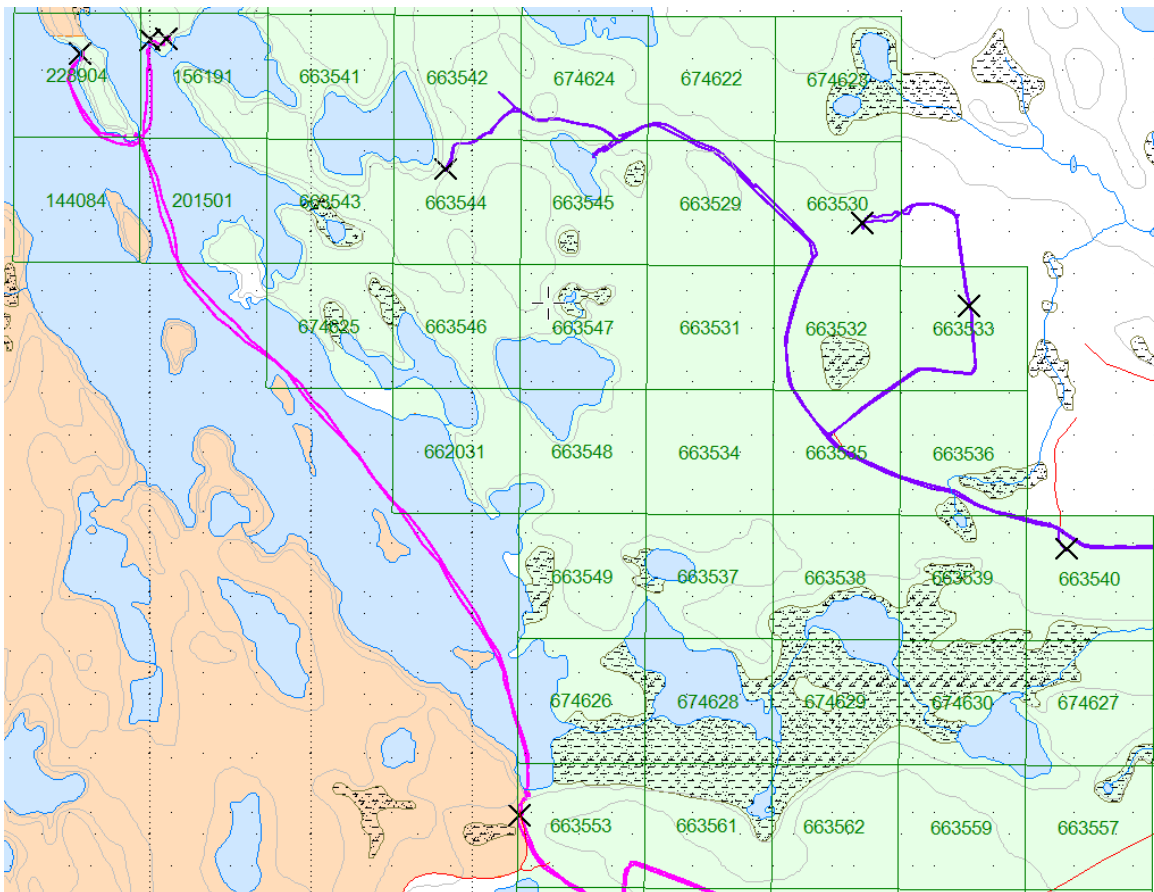


Figure 2: Claim Map with Claims being Prospected

2. PROSPECTING

2.1 OVERVIEW

During the summer of 2021 two prospecting traverses were performed on the Meteor Lake Property. The purpose of the traverses were to determine the extent and relative quantity of gold grains in the gravel. This was accomplished by filling a 5 gallon pail of gravels and then panning them onsite to obtain an approximate gold count.

2.2 PLANS & PERMITS

The prospecting work reported on here was surficial and did not require any plans or permits.

2.3 DAILY LOG

Date	Description
June 12, 2021	Alexis Morin and Christine Belisle locate lake access and historic placer area. Pan to determine rough quantity, size and recoverability in pan. Examine and pan areas accessible by water.
August 14, 2021	Jason Ploeger and Alexis Morin traverse and pan various regions on the property.

Table 2: Daily Prospecting Log

2.4 PERSONNEL

Jason Ploeger of Larder Lake, Alexis Morin and Christine Belisle of Englehart, Ontario prospected the property.

2.5 SURVEY SPECIFICATIONS

Historically the best gold counts were on the point of land on Meteor Lake. Traverses were made near the historic location and around the extremities of the staked claims. At each site a hole was dug to a depth where gravel was encountered. A five-gallon pail of material was then collected and panned using a gold pan.

3. RESULTS

3.1 SUMMARY OF SAMPLES COLLECTED

This area was accessed by water by Alexis and Christine.

No Significant sites were noted.

3.2 DAY 1 – JUNE 12, 2021

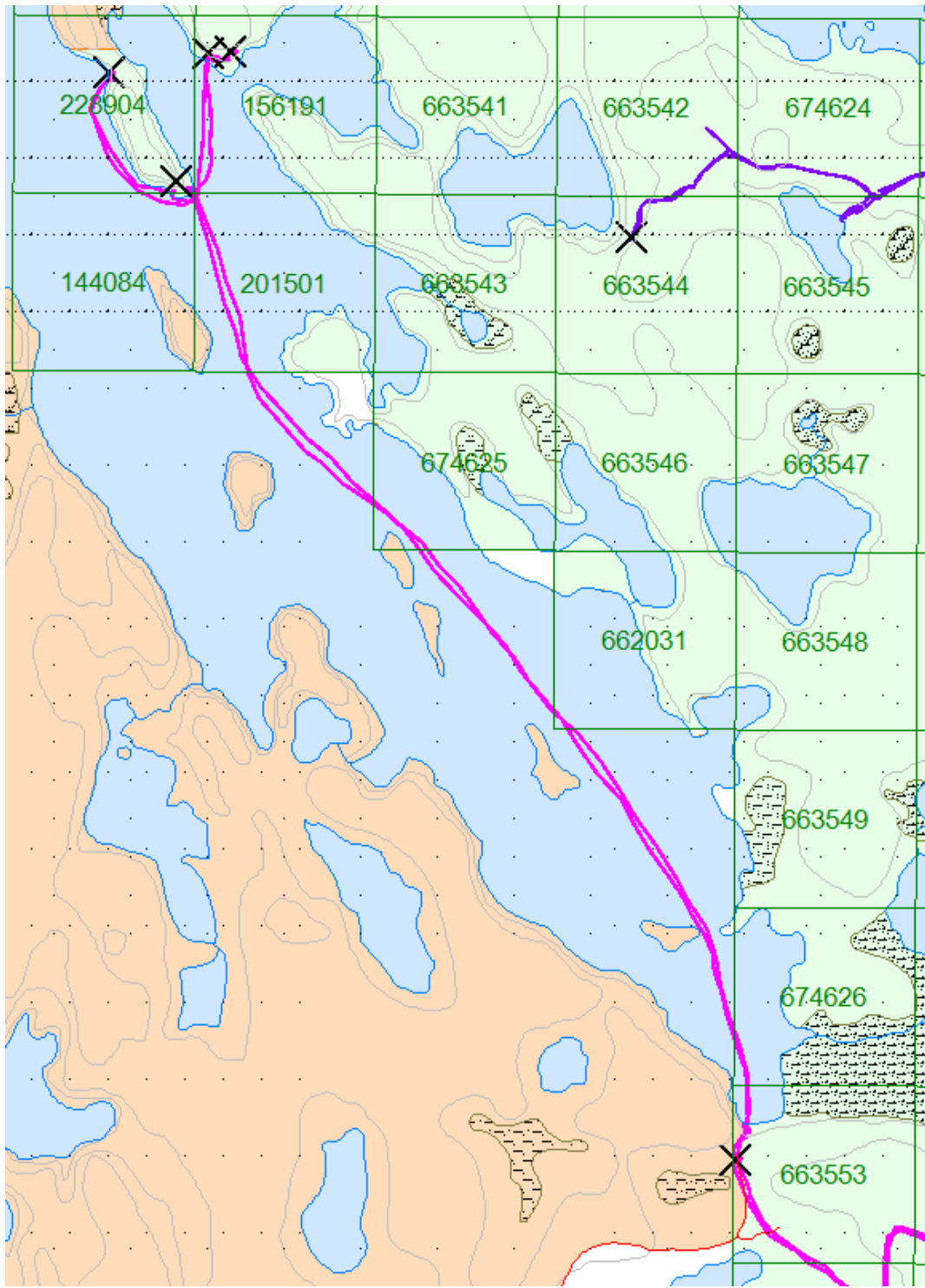


Figure 3: Traverses conducted on June 12th, 2021

Alexis Morin and Christine Belisle located and accessed the property by boat. They located a pit on the point and proceeded to sample the gravels from the bottom of the historic pits/trenches. The cobbles were well rounded and consisted mainly of granite. They accessed and panned an area on the west side of the peninsula. On the east side of the bay (claim 156191) they located an area of coarse tailings along with an overburden shaft.

Only prospecting for placer gold was performed, however no outcropping was encountered.

The entire area was covered with spruce.

Coarse Tailings:	469860E 5239877N
Overburden Shaft:	469800E 5239871N
Historic Pit/Trenches:	469752E 5239517N
Old Machinery:	471176E 5236990N



Figure 4: Old Bulldozer Found



Figure 5: Old Overburden Drill Found

Sample

Rock Description: This was panned from a 5 gallon (0.03 yards) pail of gravel/cobble obtained from a historic overburden pit. The cobble was predominantly granite. The sample was collected from a shallow hole that was dug with a shovel. This represents the gravels directly below the organic layer.

Location:
469541E
5239822N

The results of the pan showed a fine flour gold with over 5 but less than 20 gold grains observed.

Sample

Rock Description: This was panned from a 5 gallon (0.03 yards) pail of gravel/cobble obtained from a historic overburden pit. The cobble was predominantly granite. The samples was collected from surface gravels uncovered from the historic program.

Location:
469860E
5239877N

The results of the pan showed a fine flour gold with over 1 but less than 5 gold grains observed.

Sample

Rock Description: This was panned from a 5 gallon (0.03 yards) pail of gravel/cobble obtained from a historic overburden pit. The cobble was predominantly granite. This sample was collected by digging into the side at the bottom of the historic pit/trench at a depth of about 4 feet below grade.

Location:
576368E
5344202N



Figure 6: Gold panned from Historic Pit

The resulting gold can be seen in the above pan.

3.3 DAY 2 – 14 AUGUST 2021

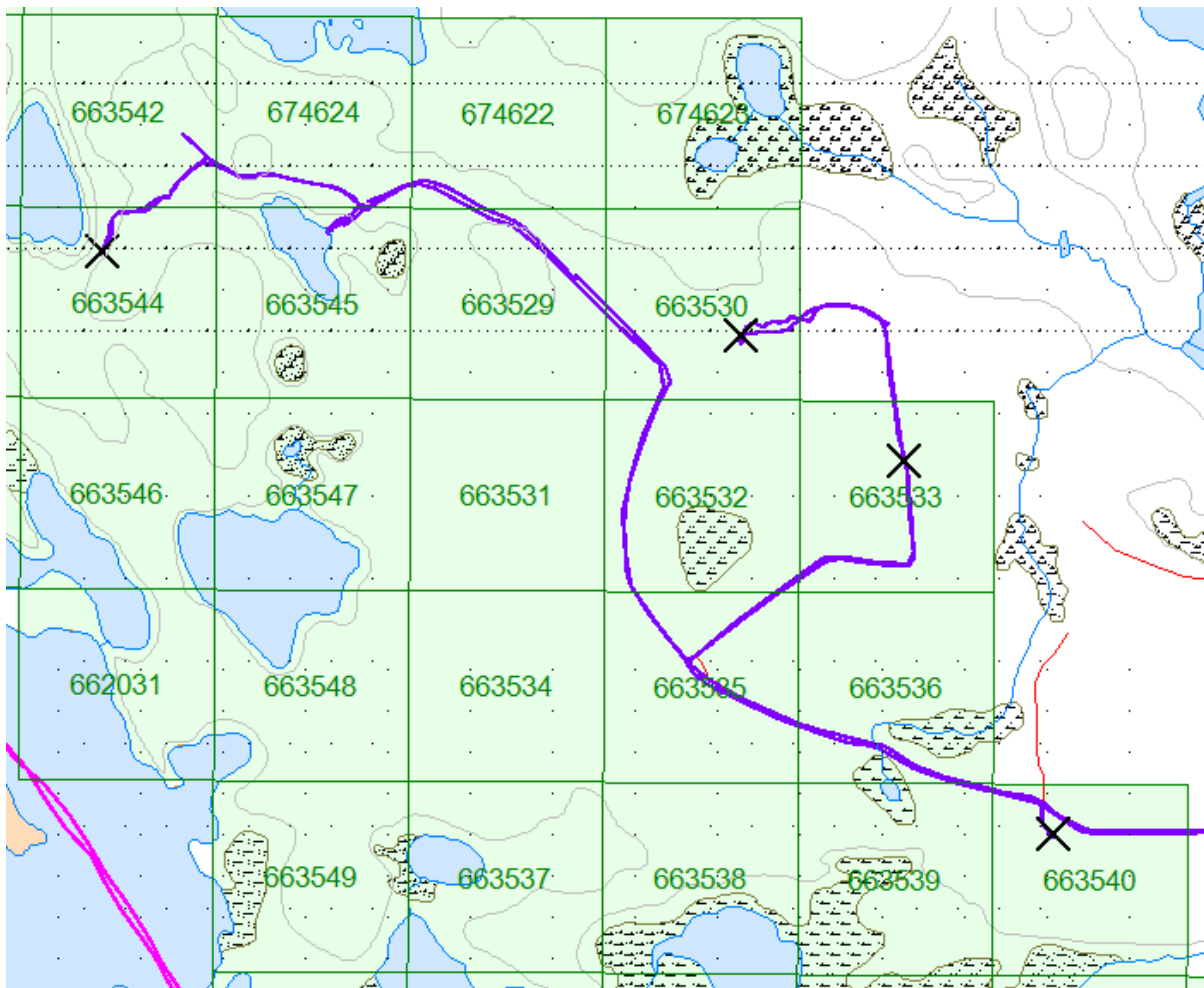


Figure 7: Traverse conducted on August 14th, 2021

Alexis Morin and Jason Ploeger performed traverses by travelling down various old forestry roads and attempting to locate historic pits. At various sites 5-gallon pails (0.03 yards) samples were collected and panned. These were classified as a range of colors seen. All sites provided gold grains which were small flour gold in size. The higher grain counts appeared to have an association with larger granite cobbles, with black veining.

Only overburden prospecting for placer gold was performed.

Sample

Rock Description: This was panned from a 5 gallon (0.03 yards) pail of gravel/cobble obtained from a historic overburden pit. The cobble was predominantly granite. The samples was collected from surface gravels from an area of excavation from recent forestry activity. Also located in this area was a wood stove with a concrete base, which may indicate the presence of a historic exploration camp.

Location:
473212E
5237981N

The results of the pan showed a fine flour gold with over 1 but less than 5 gold grains observed.

Sample

Rock Description: This was panned from a 5 gallon (0.03 yards) pail of gravel/cobble obtained from a historic overburden pit. The cobble was predominantly granite. This sample was collected from an area where the old forestry road was cut into the overburden.

Location:
472848E
5238884N

The results of the pan showed a fine flour gold with over 1 but less than 5 gold grains observed.

Sample

Rock Description: This was panned from a 5 gallon (0.03 yards) pail of gravel/cobble obtained from a historic overburden pit. The cobble was predominantly granite. This sample was collected from an area where the old forestry road was cut into the overburden.

Location:
470902E
5239392N

The results of the pan showed a fine flour gold with over 1 but less than 5 gold

grains observed.

Sample

Rock Description: This was panned from a 5 gallon (0.03 yards) pail of gravel/cobble obtained from a historic overburden pit. This sample was collected from what appeared to be an old pit which was encountered on the traverse. A hole was dug in the loam to a depth of about 1 foot where a gravel with few cobbles was encountered.

Location:
472453E
5239191N

The results of the pan showed a fine flour gold with over 1 but less than 5 gold grains observed.

2.6 CONCLUSIONS

Every site produced 1-5 flour gold grains with exception to the samples collected close to Meteor Lake. This may show the background range being between 1 and 5 grains. The sample collected this year from the historic trenches/pits was collected at a greater depth than previous samples and showed more gold in the pan, which indicates an increase in gold with depth in the gravels.

2.7 RECOMMENDATIONS

It is recommended that a LiDAR survey be performed to locate any additional areas where historic work may have occurred. This may also help to identify the channel responsible for the placer deposition.

Systematic prospecting should also be performed northward from Meteor Lake, to determine the extent of the Placer Deposit. Samples should be collected from a depth where cobbles are encountered.

Gold collected should also be examined under the microscope to determine if it is rounded and if a large enough sample is collected, a laser ablation study should be done to determine the origin of it.

APPENDIX A

STATEMENT OF QUALIFICATIONS

I, C. Jason Ploeger, hereby declare that:

1. I am a professional geophysicist with residence in Larder Lake, Ontario and am presently employed as a Geophysicist and President of CJP Exploration Inc. of Larder Lake, Ontario.
2. I am a Practising Member of the Association of Professional Geoscientists, with membership number 2172.
3. I graduated with a Bachelor of Science degree in geophysics from the University of Western Ontario, in London Ontario, in 1999.
4. I have practiced my profession continuously since graduation in Africa, Bulgaria, Canada, Mexico and Mongolia.
5. I am a member of the Ontario Prospectors Association, a Director of the Northern Prospectors Association and a member of the Society of Exploration Geophysicists.
6. I am responsible for the final processing and validation of the survey results and the compilation of the presentation of this report. The statements made in this report represent my professional opinion based on my consideration of the information available to me at the time of writing this report.



C. Jason Ploeger, P.Geo., B.S.
President
CJP Exploration Inc.

Larder Lake, ON
March 31, 2023

APPENDIX B

GARMIN GPS MAP 62S



Physical & Performance:	
Unit dimensions, WxHxD:	2.4" x 6.3" x 1.4" (6.1 x 16.0 x 3.6 cm)
Display size, WxH:	1.43" x 2.15" (3.6 x 5.5 cm); 2.6" diag (6.6 cm)
Display resolution, WxH:	160 x 240 pixels
Display type:	transflective, 65-K color TFT
Weight:	9.2 oz (260.1 g) with batteries
Battery:	2 AA batteries (not included); NiMH or Lithium recommended
Battery life:	20 hours
Waterproof:	yes (IPX7)
Floats:	no
High-sensitivity receiver:	yes

Interface:	high-speed USB and NMEA 0183 compatible
------------	---

Maps & Memory:	
Basemap:	yes
Preloaded maps:	no
Ability to add maps:	yes
Built-in memory:	1.7 GB
Accepts data cards:	microSD™ card (not included)
Waypoints/favorites/locations:	2000
Routes:	200
Track log:	10,000 points, 200 saved tracks

Features & Benefits:	
Automatic routing (turn by turn routing on roads):	yes (with optional mapping for detailed roads)
Electronic compass:	yes (tilt-compensated, 3-axis)
Touchscreen:	no
Barometric altimeter:	yes
Camera:	no
<u>Geocaching-friendly:</u>	yes (paperless)
<u>Custom maps compatible:</u>	yes
Photo navigation (navigate to geotagged photos):	yes
Outdoor GPS games:	no
Hunt/fish calendar:	yes

Sun and moon information:	yes
Tide tables:	yes
Area calculation:	yes
Custom POIs (ability to add additional points of interest):	yes
Unit-to-unit transfer (shares data wirelessly with similar units):	yes
Picture viewer:	yes
Garmin Connect™ compatible (online community where you analyze, categorize and share data):	yes

- *Specifications obtained from www.garmin.com*

APPENDIX B

GOLD PAN



Gold panning is a simple process. Once a suitable placer deposit is located, some alluvial deposits are scooped into a pan, where they are then wetted and loosed from attached soils by soaking, fingering, and aggressive agitation in water. This is called stratification; which helps dense materials, like gold, sink to the bottom of the pan. Materials with low specific gravity will rise upward, allowing these to be washed out of the pan, whereas materials with higher specific gravity, sinking to the bottom of the sediment during stratification, will remain in the pan allowing examination and collection by the prospector. These dense materials usually consist of black sand with whatever stones or dense metal particles that may be found in the deposit that is used for source material.

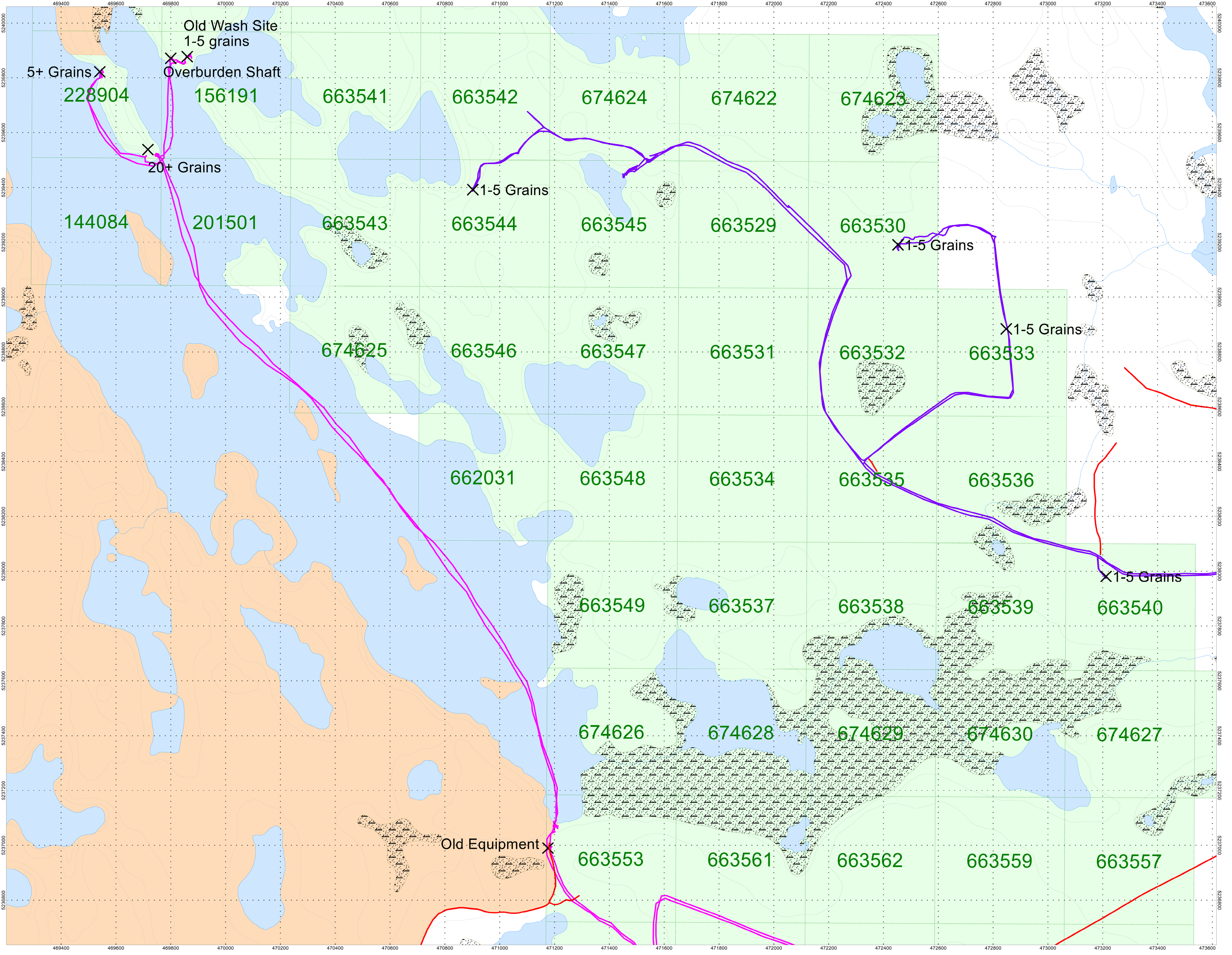
APPENDIX C

LIST OF MAPS (IN MAP POCKET)

Posted Claim Georeference Map (1:2000)

- 1) CJP-Meteor-Prospecting

TOTAL MAPS=1



- X Gold Grains in Pan
- Traverse June 12, 2021
- Traverse August 14, 2021

**CJP Exploration Inc.
and
Alexis Morin**

METEOR LAKE PROPERTY
Beulah Township, Ontario

PROSPECTING TRAVERSE PLAN MAP

Map Drawn By: C Jason Ploeger
March 2023

Drawing: CJP-Meteor-Prospecting 2021