

We are committed to providing [accessible customer service](#).

If you need accessible formats or communications supports, please [contact us](#).

Nous tenons à améliorer [l'accessibilité des services à la clientèle](#).

Si vous avez besoin de formats accessibles ou d'aide à la communication, veuillez [nous contacter](#).



2020 PROSPECTING REPORT
ON THE
SIOUX LOOKOUT PROPERTY

SIOUX LOOKOUT AREA
District of Thunder Bay, Ontario, Canada
Patricia Mining Division of Ontario
NTS MAP 52K/01 & 52K/04
Zone 15

Prepared by:
Lyshia Goodhue, P.Geol and Gabriela Murray, P.Geol.

Supervised by:
Jim Edwards, P.Geol and Elizabeth Vida, P.Geol.

August 1 2022

TABLE OF CONTENTS

LIST OF TABLES	2
LIST OF FIGURES	2
1.0 SUMMARY	3
2.0 INTRODUCTION	3
3.0 LOCATION	4
4.0 ACCESS	4
5.0 CLAIMS.....	5
6.0 PHYSIOGRAPHY.....	6
7.0 HISTORY	7
8.0 GEOLOGICAL SETTING	8
8.1 REGIONAL GEOLOGY.....	8
8.2 LOCAL GEOLOGY.....	8
9.0 ASSESSMENT WORK	9
10.0 RESULTS OF PROGRAM.....	10
11.0 CONCLUSIONS AND RECOMMENDATIONS.....	13
12.0 REFERENCES.....	14
13.0 STATEMENT OF QUALIFICATIONS.....	15
APPENDICES.....	17
APPENDIX 1: INVOICES	18
APPENDIX 2: ASSAY CERTIFICATE	21

LIST OF TABLES

TABLE 1. Sioux Lookout Property Claim Details.....	6
TABLE 2. Sioux Lookout Project Historical Exploration Summary.	7
TABLE 3. Money spent for field work performed by Sans Peur Exploration Services	10
Table 4. Sample location, description, and assay results. Colour Codes: BG-Beige; BR-Brown; GR-Green; GY-Grey; RD-Red; WH-White. Lithology Codes: MB-Basalt; MGB-Gabbro; SH-Schist; VQZ-Quartz Vein	13

LIST OF FIGURES

Figure 1. Sioux Lookout Project Location Map. Datum NAD 83, Zone 15	4
Figure 2. Land Tenure for Sioux Lookout Project (Revel Resources Ltd.). Datum NAD 83, Zone 15	5
Figure 3. Regional Geology Map. Simplified from MERC Superior Craton Geological Map (Montsion et al., 2018).....	8
Figure 4. Property Geology Map. Modified from MERC Superior Craton Geological Map (Montsion et al., 2018) by Sans Peur Exploration Services. Datum NAD83 Zone 15	9
Figure 5. Sample Location And Daily Boat Traverse Map. Datum NAD83 Zone 15	10
Figure 6. Sample Location And Boat Traverse DAY 1 Map. Datum NAD83 Zone 15	11
Figure 7. Sample Location And Boat Traverse DAY 2 Map. Datum NAD83 Zone 15	11
Figure 8. Sample Location And Boat Traverse DAY 3 Map. Datum NAD83 Zone 15	12
Figure 9. Sample Location And Boat Traverse DAY 4 Map. Datum NAD83 Zone 15	12

1.0 SUMMARY

Sans Peur Exploration Services was contracted by AuTeco Minerals Ltd to perform prospecting work on the Sioux Lookout Claims from August 15 to August 21, 2020. The Property is located approximately 260 kilometers northwest of the city of Thunder Bay, Ontario and forms a U shape around the southern edge Sioux Lookout (Figure 1). The Sioux Lookout Property is in the Drayton Township with GTP Block 10, as well as the Jordan, Vermilion Lake, Zarn Lake and Sharron Lake Townships. It is within the Patricia Mining Division of Ontario, on NTS Map sheets 52 K/01 and 52 J/04, Datum NAD 83, and Zone 15. Gold is the primary commodity being explored for this region.

The Sioux Lookout Property is 100% owned by Revel Resources Ltd., the Canadian subsidiary of AuTeco Minerals Ltd, an Australian listed company and consists of 39 contiguous mining claims (Figure 2), covering a total of 166.7 square kilometers (Table 1).

The Property is located in the Western Wabigoon subprovince just below the English River and Winnipeg River subprovinces (Figure 3). Local geology (Figure 4) displays several Archean shear zones with several north verging thrusts with Timiskaming type-conglomerates.

From Sioux Lookout, the property can be accessed via secondary logging roads, ATV trails and by boat. Tyrell Sutherland and Charlene Duffett from Sans Peur Exploration Services conducted the prospecting exploration of the Property and collected 31 samples to assay for gold.

The objective of this program was to determine the geology, mineralization and the structures of the Sioux Lookout Property and to assess it for future work. Figure 4 shows the location of the best of these gold assays values with one significant hit of 0.873g/t Au. The rest of the sample assays were less than 0.1 g/t Au (Table 3).

In addition to the collection of grab samples, the 2020 prospecting program determined that additional work needs to be performed:

1. Major geophysical structures have never been prospected.
2. The prospecting program suggests historic showings have limited exploration (filled in trenches etc.).
3. It is recommended that an airborne geophysics program is flown.
4. From the interpretation of the airborne geophysics, diamond drill targets along with additional prospecting targets and sampling to be performed.
5. Additional soil sampling survey across identified favourable geophysical structures and anomalies is also recommended.

2.0 INTRODUCTION

Sans Peur Exploration was contracted by AuTeco Minerals Ltd to prospect the Sioux Lookout Property claims from August 15 to August 21, 2020. This report was prepared for AuTeco Minerals Ltd, an Australian listed company who owns 100% of Revel Resources Ltd, their Canadian subsidiary and contains a summary of the work completed. This report documents the prospecting field work that took place in the field. The Sioux Lookout property is 100% owned by Revel Resources Ltd and consists of 39 contiguous mining claims (Figure 2), covering

a total of 166.7 square kilometers (Table 1). The Property is located approximately 260 kilometers northwest of the city of Thunder Bay, Ontario and forms a U shape around the southern edge Sioux Lookout (Figure 1).

The goal of this program was to understand the geology, the associated mineralization and structures of the area in order to identify future drill targets for diamond drilling.

3.0 LOCATION

The Sioux Lookout Property (hereafter simply referred to as “The Property”) is primarily in the Drayton Township with GTP Block 10, as well as the Jordan, Vermilion Lake, Zarn Lake and Sharron Lake Townships. The Property is situated in the Patricia Mining Division of Ontario, on NTS sheets 52 K/01 and 52 J/04, Datum NAD 83, Zone 15. The property is approximately 260 kilometers northwest of the city of Thunder Bay, Ontario and forms a U shape around the southern edge of the town of Sioux Lookout (Figure 1).

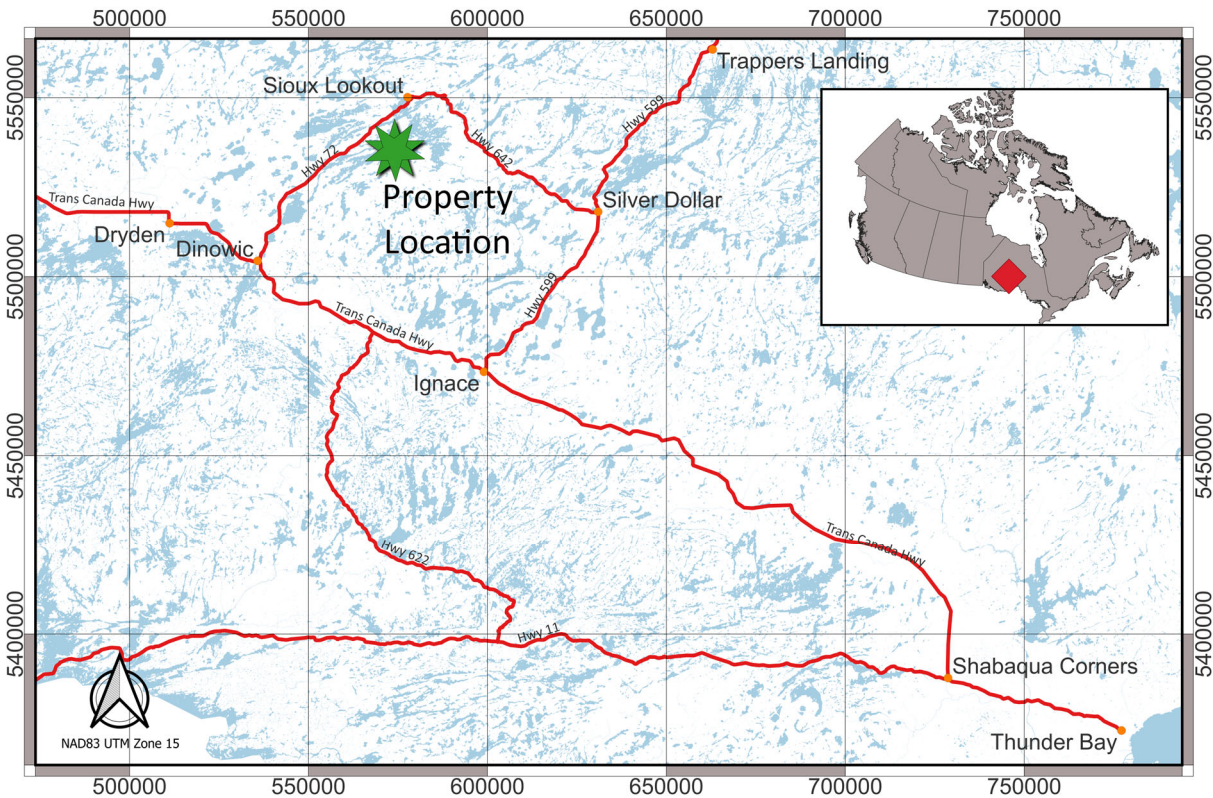


FIGURE 1. SIOUX LOOKOUT PROJECT LOCATION MAP. DATUM NAD 83, ZONE 15

4.0 ACCESS

Sioux Lookout Property can be reached from Thunder Bay by travelling west on highway 11/17, until the turnoff for highway 72 which travels north towards Sioux Lookout. From Sioux Lookout the property can be access via secondary logging roads, ATV trails and by boat.

The City of Thunder Bay (population of 110,000) can provide support services, equipment, and skilled labor for both the mineral exploration and mining industry. Rail, national highway, port and international airport services are also available out of Thunder Bay. Tertiary supports are also available out of the town of Sioux Lookout and Dryden, Ontario.

5.0 CLAIMS

The Property is comprised of legal mineral properties registered under and subject to the Mineral Tenure Act and Mineral Land Tax Act of the Province of Ontario. The Property consists of 39 contiguous mining claims (Figure 2), covering a total of 166.7 square kilometers and are listed in Table 1. All claims are located on the NTS Map Sheets 52 K/01 and 52 J/04, Datum NAD 83, and Zone 15. The Sioux Lookout Property is 100% owned by Revel Resources, the Canadian subsidiary of AuTeco Minerals Ltd, an Australian listed Company. All claims have not been legally surveyed and they have no environmental liabilities. All are in good standing as of the publication of this report.

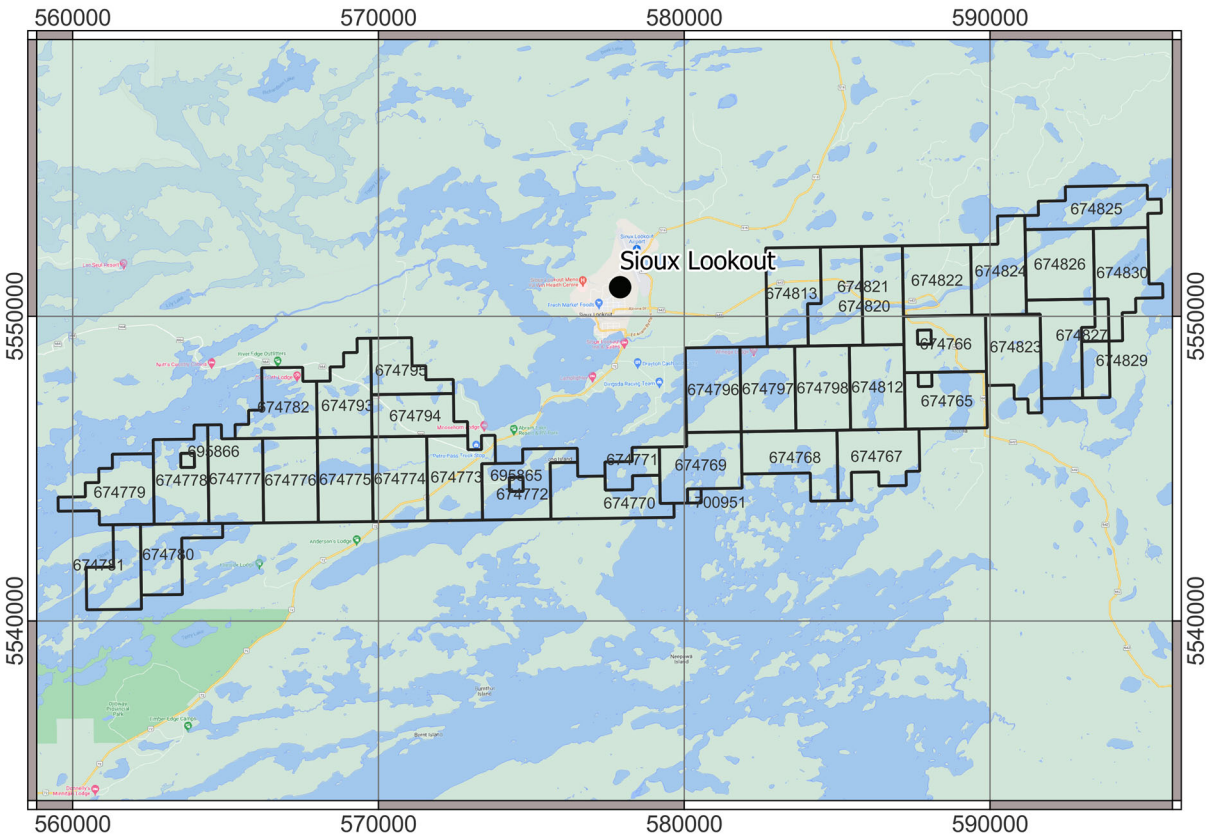


FIGURE 2. LAND TENURE FOR SIOUX LOOKOUT PROJECT (REVEL RESOURCES LTD.). DATUM NAD 83, ZONE 15

	Township / Area	Tenure ID	Tenure Type	Anniversary Date	Tenure Status	Area (Ha)	Work Required
1	DRAYTON	674765	Multi-cell Mining Claim	2022-08-05	Active	477.0	\$9,200
2	DRAYTON,GTP BLOCK 10	674766	Multi-cell Mining Claim	2022-08-05	Active	476.8	\$9,200
3	DRAYTON	674767	Multi-cell Mining Claim	2022-08-05	Active	456.4	\$8,800
4	DRAYTON	674768	Multi-cell Mining Claim	2022-08-05	Active	518.6	\$10,000
5	DRAYTON	674769	Multi-cell Mining Claim	2022-08-05	Active	497.9	\$9,600
6	DRAYTON	674770	Multi-cell Mining Claim	2022-08-05	Active	518.7	\$10,000
7	DRAYTON	674771	Multi-cell Mining Claim	2023-09-07	Active	166.0	\$0
8	DRAYTON	674772	Multi-cell Mining Claim	2022-08-05	Active	477.2	\$9,200
9	DRAYTON	674773	Multi-cell Mining Claim	2022-08-05	Active	518.6	\$10,000
10	DRAYTON	674774	Multi-cell Mining Claim	2022-08-05	Active	497.9	\$9,600
11	DRAYTON	674775	Multi-cell Mining Claim	2022-08-05	Active	497.9	\$9,600
12	DRAYTON	674776	Multi-cell Mining Claim	2022-08-05	Active	497.9	\$9,600
13	DRAYTON	674777	Multi-cell Mining Claim	2022-08-05	Active	518.6	\$10,000
14	DRAYTON,JORDAN	674778	Multi-cell Mining Claim	2022-08-05	Active	497.9	\$9,600
15	JORDAN,VERMILION	674779	Multi-cell Mining Claim	2022-08-05	Active	477.2	\$9,200
16	DRAYTON,JORDAN	674780	Multi-cell Mining Claim	2022-08-05	Active	373.6	\$7,200
17	JORDAN,VERMILION	674781	Multi-cell Mining Claim	2022-08-05	Active	373.6	\$7,200
18	DRAYTON	674782	Multi-cell Mining Claim	2022-08-07	Active	456.2	\$8,800
19	DRAYTON	674793	Multi-cell Mining Claim	2022-08-07	Active	456.2	\$8,800
20	DRAYTON	674794	Multi-cell Mining Claim	2022-08-07	Active	394.0	\$7,600
21	DRAYTON	674795	Multi-cell Mining Claim	2022-08-07	Active	331.7	\$6,400
22	DRAYTON	674796	Multi-cell Mining Claim	2022-08-05	Active	497.6	\$9,600
23	DRAYTON	674797	Multi-cell Mining Claim	2022-08-05	Active	497.6	\$9,600
24	DRAYTON	674798	Multi-cell Mining Claim	2022-08-05	Active	497.6	\$9,600
25	DRAYTON	674812	Multi-cell Mining Claim	2022-08-05	Active	497.6	\$9,600
26	DRAYTON,GTP BLOCK 10	674813	Multi-cell Mining Claim	2022-08-05	Active	518.1	\$10,000
27	DRAYTON,GTP BLOCK 10	674820	Multi-cell Mining Claim	2022-08-05	Active	497.4	\$9,600
28	DRAYTON,GTP BLOCK 10	674821	Multi-cell Mining Claim	2022-08-05	Active	435.2	\$8,400
29	GTP BLOCK 10	674822	Multi-cell Mining Claim	2022-08-05	Active	518.0	\$10,000
30	DRAYTON,GTP BLOCK 10,ZARN LAKE AREA	674823	Multi-cell Mining Claim	2022-08-07	Active	476.8	\$9,200
31	GTP BLOCK 10	674824	Multi-cell Mining Claim	2022-08-05	Active	497.3	\$9,600
32	GTP BLOCK 10,SHARRON LAKE AREA,ZARN LAKE AREA	674825	Multi-cell Mining Claim	2022-08-05	Active	497.1	\$9,600
33	GTP BLOCK 10,ZARN LAKE AREA	674826	Multi-cell Mining Claim	2022-08-05	Active	518.0	\$10,000
34	GTP BLOCK 10,ZARN LAKE AREA	674827	Multi-cell Mining Claim	2022-08-07	Active	497.5	\$9,600
35	ZARN LAKE AREA	674829	Multi-cell Mining Claim	2022-08-07	Active	165.9	\$3,200
36	ZARN LAKE AREA	674830	Multi-cell Mining Claim	2022-08-05	Active	518.0	\$10,000
37	DRAYTON	695865	Single Cell Mining Claim	2023-12-10	Active	20.7	\$0
38	JORDAN	695866	Single Cell Mining Claim	2023-12-10	Active	20.7	\$0
39	DRAYTON	700951	Single Cell Mining Claim	2024-01-12	Active	20.7	\$0

TABLE 1. SIOUX LOOKOUT PROPERTY CLAIM DETAILS

6.0 PHYSIOGRAPHY

Relief over the area is low, with areas of high relief being dominated by eskers. The region is covered by glaciofluvial and glacialacustrine sediments topped by aeolian sands and gravels (Chubb, 1998). Outcrop exposure is limited on the property.

Vegetation consists of moderately sized cedar swamps and cedar forests in the topographic lows, and cedar, jackpine, spruce, white and rock maple, poplar and balsam in the topographic highs (Chubb, 1998).

Climate is typical of Northwestern Ontario. A typical temperature range for the winter months would be -8°C to -24°C with extreme lows of <-40°C. While in the summer months, a typical temperature range would be 10°C to

25°C with extreme highs of >35°C. The average annual rainfall for the area is 517mm and the average annual snowfall would be 204 cm.

7.0 HISTORY

An investigation of the Ministry of Northern Development and Mines assessment files was conducted and resulted in a number of files being identified on and adjacent to the Property. A variety of work was conducted in the area since 1951 to the most current of 2017. Table 2 provides a summary of assessment work listed by area, company, year and type of work that was performed.

The historical work provided by the Province has been obtained in this report through the digital portal on the Ministry of Northern Development and Mines online geoscience database (Ontario Assessment File Database). The files contain technical reports on exploration work in the area. These details include locations, property ownerships, and work performed. It should be noted that the historical property location associated with the assessment reports is, in some cases difficult to determine and as such requires validation and verification. In addition, raw data (e.g. airborne geophysical survey data) are typically not supplied and therefore cannot be verified by the author.

Area	Work Performed By	Year	Work Type	Report No.
Jordan Township	Moneta Porcupine Mines Inc.	1951	Diamond Drilling	52K01SE8980
Zarn Lake	Kerr-Addison Mines Ltd.	1968	Diamond Drilling	52J04SE2120
Drayton Township	Kerr-Addison Mines Ltd.	1968	Diamond Drilling	52J04SW0047
Zarn Lake	Kerr-Addison Mines Ltd.	1969	Diamond Drilling	52J04SE0026
Drayton Township	Kerr-Addison Mines Ltd.	1969	Diamond Drilling	52J04SW0042
Drayton Township	Kerr-Addison Mines Ltd.	1969	Diamond Drilling	52J04SW0045
Whipper Lake	Oja Ltd.	1969	Airborne Radiometric Survey	52K01SW9511
Drayton Township	Norman Paterson & Associates Limited	1970	Magnetometer Survey	52J04SW8930
Sturgeon Lake Area, Alcona Area, Drayton Area	Conwest Exploration Company Ltd.	1971	Electromagnetic and Magnetic Survey	52J02NE0462
FirstLoon Lake	Klement Danda and Jan Klein	1971	Airborne Geophysics	52P12SE9000
Drayton Township	Conwest Exploration Company Ltd.	1972	Electromagnetic and Magnetic Survey	52J04SW0024
Drayton Township	Geophysical Engineering	1977	Diamond Drilling	52J04SW0034
Whipper Lake	Nahanni Mines Limited	1983	Magnetometer and Electromagnetic Surveys	52J04SW0010
Drayton Township	Nahanni Mines Limited	1983	Diamond Drilling	52J04SW0011
Jordan Township	J.L. Wahl	1983	Geological Mapping, soil/rock geochemistry, Magnetic and VLF geophysical surveys	20007560
Drayton Township	Kenneth Guy Exploration Services	1984	Prospecting, Geological Mapping	52J04SW8927
Vermillion	William E. MacRae Geological Services	1986	Airborne Mag, Electromagnetic and geology mapping	52K01SE0005
Jordan Township	Moneta Porcupine Mines Inc.	1987	Diamond Drilling	52K01SE8954
Vermillion Township	TerraQuest Ltd	1987	Airborn Magnetic and VLF-EM Surveys	52K04SW0500
Drayton, Zarn Lake and Sharron Lake Area	Placer Dome	1997	Ground Magnetometer Survey	52J04NE0012
Drayton Township	Superior Exploration	2017	Geophysical Modelling and Interpretation, drill core splitting and assaying	20000015248_01

TABLE 2. SIOUX LOOKOUT PROJECT HISTORICAL EXPLORATION SUMMARY.

8.0 GEOLOGICAL SETTING

8.1 REGIONAL GEOLOGY

The Sioux Lookout property is located in the Western Wabigoon subprovince just below the English River and Winnipeg River subprovinces (Figure 3). The Sioux Lookout orogenic (“greenstone”) belt, a relatively small part of the western Wabigoon subprovince in northwest Ontario, is composed of the following tectonized stratigraphic units, from north to south: 1) the Northern Volcanic belt; 2) the Patara Formation; 3) the “Big Vermilion–Daredevil unit”; 4) the Ament Bay Formation; 5) the Daredevil Formation stratotype; 6) the Central Volcanic belt also known as the Neepawa group; 7) the Minnitaki Group; and 8) the Southern Volcanic belt. The Sioux Lookout belt is bounded to the north by the Winnipeg River subprovince and to the south by the Basket Lake batholith (Devaney, 2000).

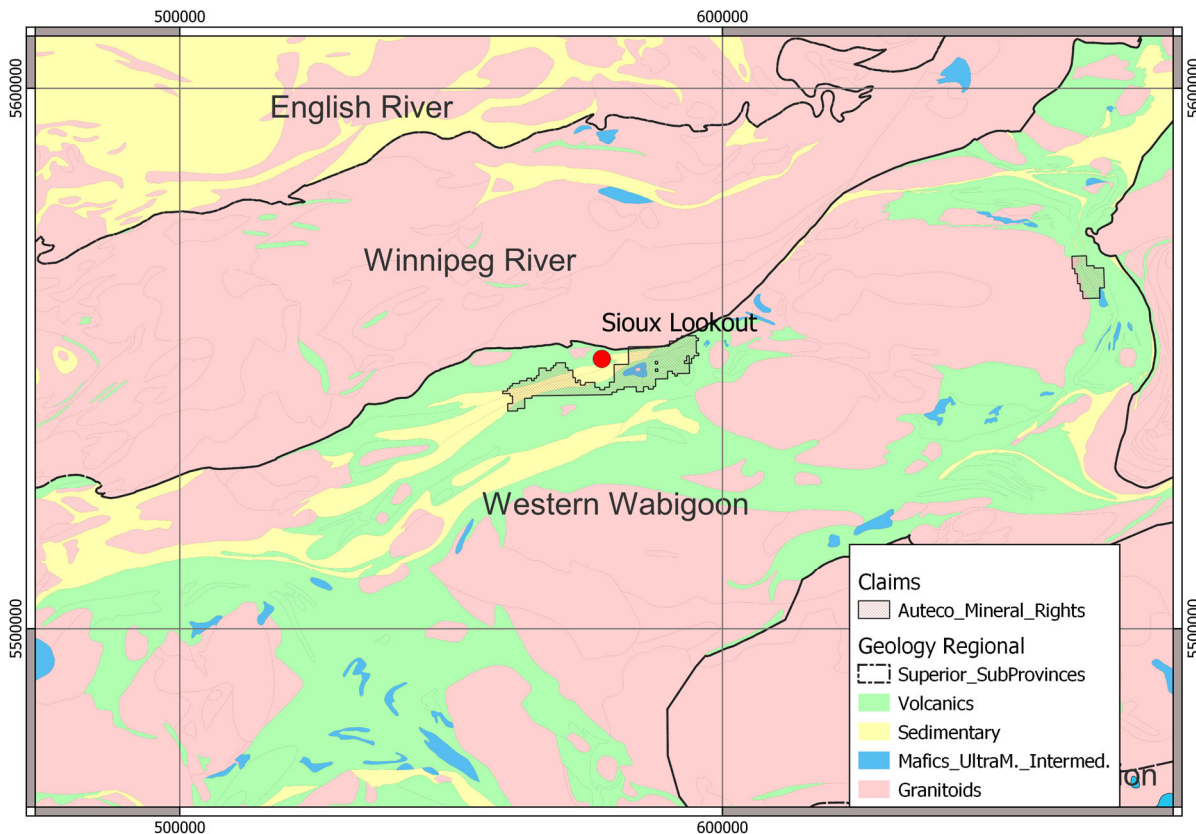


FIGURE 3. REGIONAL GEOLOGY MAP. SIMPLIFIED FROM MERC SUPERIOR CRATON GEOLOGICAL MAP (MONTSION ET AL., 2018).

8.2 LOCAL GEOLOGY

Local geology (Figure 4) displays several Archean shear zones with several north verging thrusts with Timiskaming type-conglomerates. There are several historical advanced showings of assays up to 1.76oz/t from 26 drill hole data, but most of the holes have no data reported. The region is known to have multiple verging thrust basins with nearby multi-million oz gold deposits.

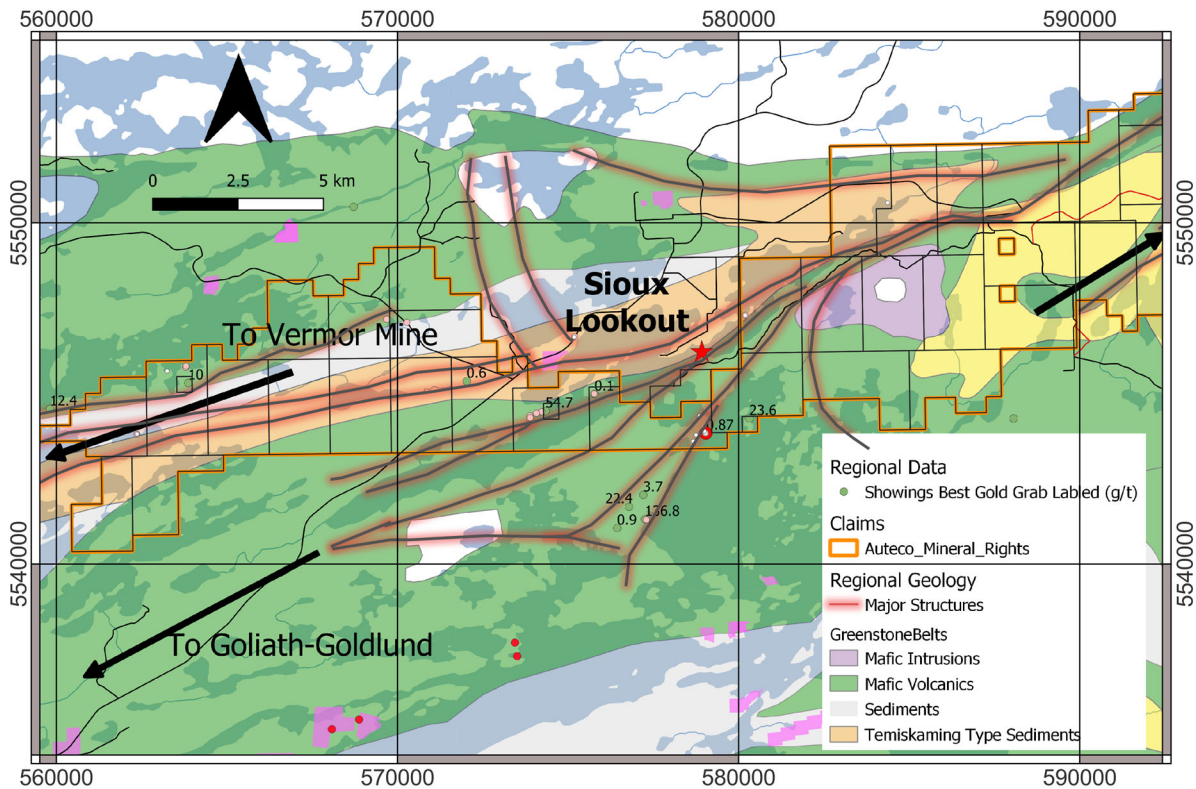


FIGURE 4. PROPERTY GEOLOGY MAP. MODIFIED FROM MERC SUPERIOR CRATON GEOLOGICAL MAP (MONTSION ET AL., 2018) BY SANS PEUR EXPLORATION SERVICES. DATUM NAD83 ZONE 15

9.0 ASSESSMENT WORK

Sans Peur Exploration Services was contracted to perform prospecting work on the Sioux Lookout Claims held 100% by Revel Resources Ltd., a subsidiary of AuTeco Mineral Ltd. They performed the work between August 15 to August 21, 2020. The purpose of the program was to get understand the geology, structure and mineralization of the area and the direction for future work.

Sans Peur Exploration Services spent five days prospecting. During that time, they:

1. Sampled several deformed quartz feldspar porphyries.
2. Observed lamprophyres, displayed proximal to major shear zones, which is prime gold mineralization.
3. Determined that historic showings have not been recently explored (filled in trenches etc.)

Money spent for the work performed can be found in Table 3.

	Unit	Rate	Total
Day Rate - Supervisor	12	\$ 550	\$ 6,600
Day Rate - Geologist	11	\$ 550	\$ 6,050
Truck Rental	12	\$ 100	\$ 1,200
Boat Rental	7	\$ 125	\$ 875
Accommodation	10	\$ 125	\$ 1,250
Per Diem	23	\$ 50	\$ 1,150
Incidentals	12	\$ 100	\$ 1,200
Sample Transport	1	\$ 125	\$ 125
Assays	28	\$ 21	\$ 620
Total			\$ 19,070

TABLE 3. MONEY SPENT FOR FIELD WORK PERFORMED BY SANS PEUR EXPLORATION SERVICES

10.0 RESULTS OF PROGRAM

While Sans Peur Exploration Services was prospecting, a number of samples (28) were taken for geochemical analysis (Figure 5). There was only one significant hit of gold at 0.873 g/t. All other results were less than 0.1 g/t (Table 4). Samples were taken predominately in the volcanics with only 5 in the meta-sediments. Figure 6 to Figure 9 display daily traverses taken by boat, samples were taken along shoreline where the boat had reasonable access. Table 4 displays all information related to the sampling including the date which they were taken. It should be noted that the Assay Certificates were listed as Drill Core. This was in error due to Sans Peur Exploration Services methods. They sent the lab Grab Samples and Drill Core on the same work order.

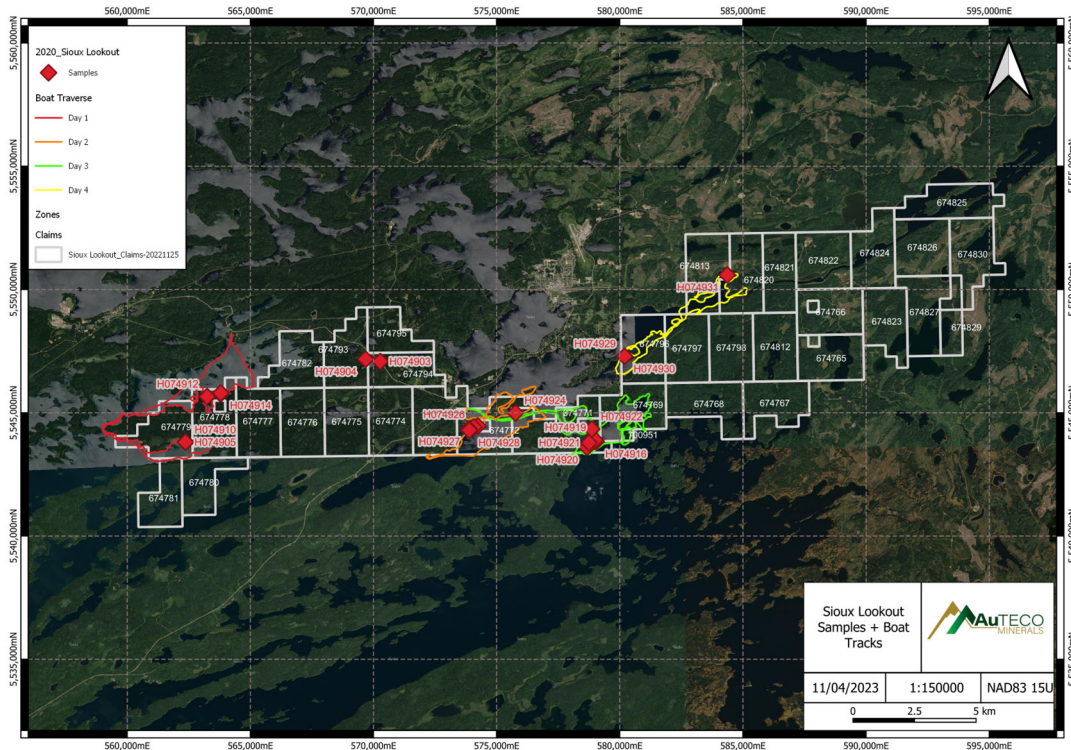


FIGURE 5. SAMPLE LOCATION AND DAILY BOAT TRAVERSE MAP. DATUM NAD83 ZONE 15

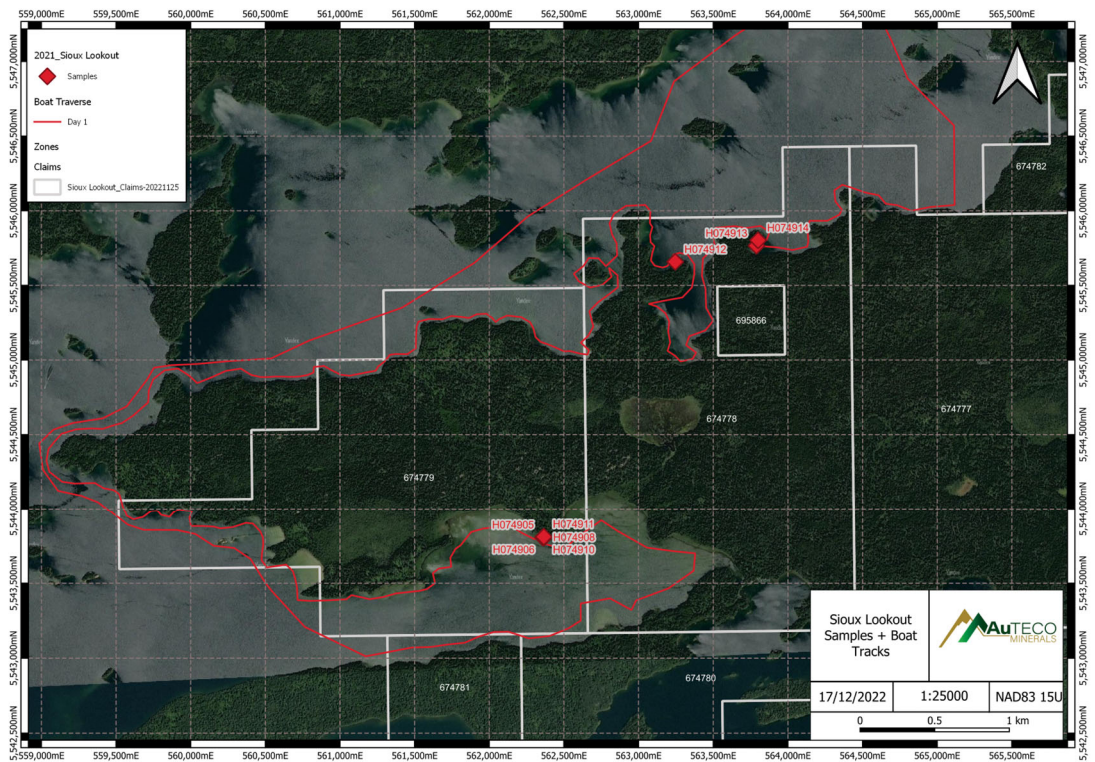


FIGURE 6. SAMPLE LOCATION AND BOAT TRAVERSE DAY 1 MAP. DATUM NAD83 ZONE 15

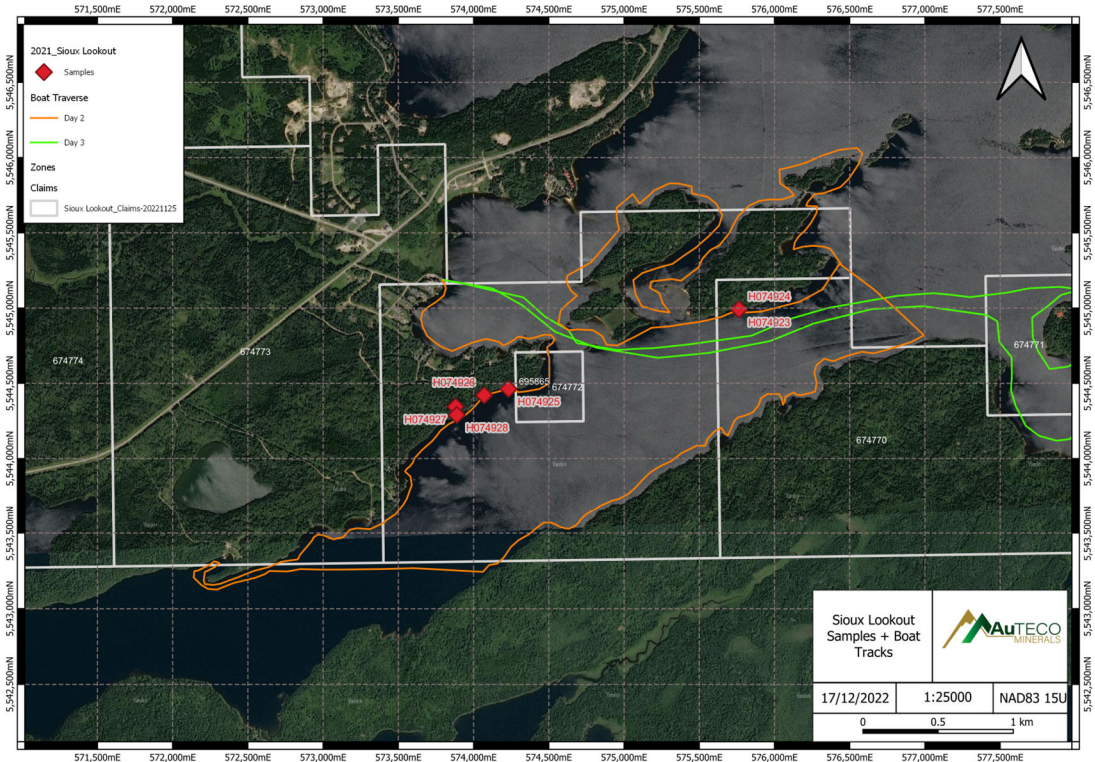


FIGURE 7. SAMPLE LOCATION AND BOAT TRAVERSE DAY 2 MAP. DATUM NAD83 ZONE 15

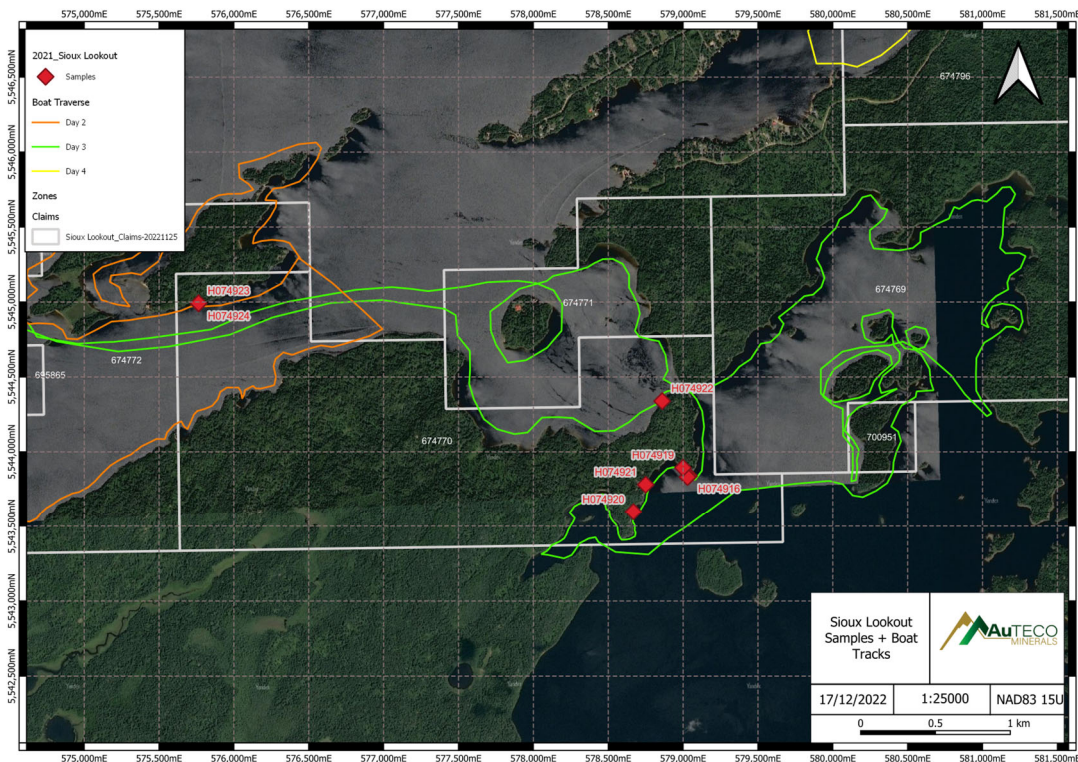


FIGURE 8. SAMPLE LOCATION AND BOAT TRAVERSE DAY 3 MAP. DATUM NAD83 ZONE 15

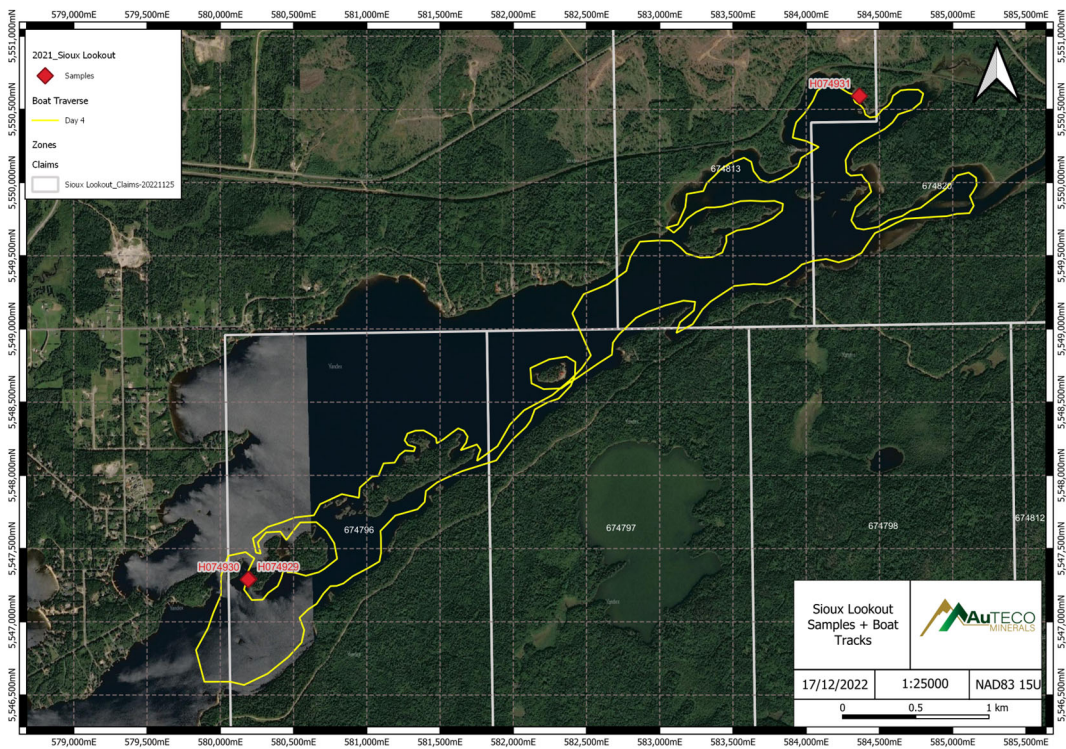


FIGURE 9. SAMPLE LOCATION AND BOAT TRAVERSE DAY 4 MAP. DATUM NAD83 ZONE 15

Sample ID	Sample Type	X	Y	Z	Date	Outcrop/Subcrop	Lith1	Lith2	Description	Sample Wt (kg)	AU (g/t)
H074903	Rock_Chip	570272	5547080	352	16-Aug-20	O	GR	MB	sheeted qtz veins up to 20cm over 2m, buggy Fe stained	0.77	0.012
H074904	Grab	569679	5547173	352	16-Aug-20	S	GY	VQZ	dark grey banded crystalline qtz vein float over 50m strike. one band up to 10%cpy. occasionally vuggy, not exposed	1.3	0.057
H074905	Grab	562359	5543805	352	16-Aug-20	O	RD	SH	vuggy coarse brecciated crystalline qtz vein. 2 filled trenches sample from dumps, box work gossan after sulfides, coats muscovite and spec hem	0.93	0.023
H074906	Grab	562364	5543810	352	16-Aug-20	O	BR	VQZ	rusty qtz vein in chl mylonite, with gold colored sericite,	0.77	0.01
H074907	Grab	562366	5543806	352	16-Aug-20	O	GR	VQZ	qtz vn in chl mylonite, with 3-5% tetrahedral asp, entrained chl frags	1.03	0.008
H074908	Grab	562366	5543806	352	16-Aug-20	O	GY	VQZ	qtz vein adjacent to sample 7, possibly cut by asp bearing phase	1.13	0.003
H074909	Grab	562366	5543806	352	16-Aug-20	O	BR	VQZ	3cm vein in mylonite peripheral to 3m qtz vein, gossan filled vugs Fe stained, mylonite strongly hemd	0.81	0.004
H074910	Grab	562365	5543808	352	16-Aug-20	O	BR	SH	carbonated mylonite with Fe carb strings and rare Py	0.56	0.003
H074911	Grab	562365	5543810	352	16-Aug-20	O	BG	SH	silicified sericite schist with gossan patches and rare carb stringers	0.86	0.004
H074912	Grab	563245	5545658	352	16-Aug-20	O	GY	VQZ	50% tourmaline with fibrous aligned orientation, blebby calcite and chl patches irregular strike with blow outs upto 1m	0.96	0.002
H074913	Grab	563789	5545766	352	16-Aug-20	O	GR	MB	qtz vein zone in pillow basalts, occasional blebs up to 5cm of copy and pos stb, buggy after dissolved sulfides or carbs	0.57	0.043
H074914	Grab	563800	5545802	352	16-Aug-20	O	GR	MB	green chrystallinr qtz vein with sulfide cpy/py bearing graphitic blebs up to 10cm b	0.6	0.033
H074916	Grab	579039	5543839	352	17-Aug-20	O	GR	MB	epi altered qtz vein up to 30cm with 5%cpy strongly hemd Halo POS fqp host clay epidote altered with 5%cpy CHL along selvages in hemd mafic agglomerate	0.96	0.873
H074917	Rock_Chip	579029	5543832	352	17-Aug-20	O	GY	MB	qtze vein with cpy, clay alteration and hem alteration halo	0.83	0.006
H074918	Rock_Chip	579029	5543832	352	17-Aug-20	O	GY	MB	qtze vein with cpy, clay alteration and hem alteration halo	0.83	0.006
H074919	Grab	578999	5543894	352	17-Aug-20	S	GY	VQZ	angular qtz vein float with gossanous selvages	1.54	0.008
H074920	Grab	578668	5543598	352	17-Aug-20	O	GR	MB	massive qtz vein with blebs of pink carbonate and wispy chl	0.87	0.003
H074921	Rock_Chip	578750	5543781	352	17-Aug-20	O	GR	MB	epidote altd vein set over two m of exposure 2%veining with hem alteration halo	0.68	0.007
H074922	Rock_Chip	578860	5544339	352	17-Aug-20	O	GR	MB	CHL shear zone with multiple 15cm qtz veins and ch py in vein an surrounding wall rock	0.92	0.0064
H074923	Rock_Chip	575763	5544990	352	18-Aug-20	O	BG	SH	sericite shear zone with vuggy qtz strings and py bearing qtz veins along margins. Fe carb flooding. sericite shear within chl shear	0.67	0.094
H074924	Grab	575764	5544992	352	18-Aug-20	S	WH	VQZ	fragments. up to 50cm of qtz float, py along selvages, wispy chl	2.22	0.015
H074925	Grab	574232	5544463	352	18-Aug-20	O	GR	MGB	qtz carb CHL vein, with rare py, variable vein orientation s nearby all with the same characteristics	1.35	0.012
H074926	Rock_Chip	574070	5544421	352	18-Aug-20	O	WH	MGB	grey. with banded and block sections rare specularite blebs chl wisps veining over 2m 30%vein	1.07	0.013
H074927	Grab	573880	5544345	352	18-Aug-20	O	BR	MGB	abundant cg py in carbonate veined SER CHL shear. trace qtz strings strong fe stain	0.81	0.0436
H074928	Grab	573888	5544290	352	18-Aug-20	O	BR	MGB	abundant cg py in carbonate veined SER CHL shear. trace qtz strings strong fe stain	1.32	0.015
H074929	Grab	580195	5547291	352	19-Aug-20	O	GY	VQZ	Chunky qtz vein with blebs of Fe carbonate	0.76	0.0167
H074930	Grab	580190	5547289	352	19-Aug-20	O	RD	VQZ	carbonate phase of large qtz vein, common FG diss py	0.96	0.01
H074931	Grab	584363	5550591	352	19-Aug-20	O	WH	SH	en echelon vein set over 10width individual veins generally >5m long and 20cm wide. veins contain patches of cg see, bi, and occasionally k-spar	1.5	0.003

TABLE 4. SAMPLE LOCATION, DESCRIPTION, AND ASSAY RESULTS. COLOUR CODES: BG-BEIGE; BR-BROWN; GR-GREEN; GY-GREY; RD-RED; WH-WHITE. LITHOLOGY CODES: MB-BASALT; MGB-GABBRO; SH-SCHIST; VQZ-QUARTZ VEIN

11.0 CONCLUSIONS AND RECOMMENDATIONS

The 2020 prospecting program determined that additional work needs to be performed:

1. Major geophysical structures have never been prospected.
2. Prospecting suggests historic showings have limited exploration (filled in trenches etc.).
3. It is recommended that an airborne geophysics program and Lidar survey be flown.
4. From the interpretation of the airborne geophysics and Lidar will aid in prospecting and diamond drill targets work to be completed on the property.
5. Additional work of creating several soils sample surveys across identified and favourable geophysical structures and anomalies is also recommended.

12.0 REFERENCES

Babin, D. Koziol, M and Samson, J. 2002. Black Lake Property 2002 Winter Diamond Drilling Program, Sharron Lake and Zarn Lake Areas, Ontario, Cameco Gold Inc., MNM Assessment File and Research Imaging (AFRI), AFRI#52J04NE2007.

Chubb, P. and Leskiw, P. 1998. 1997 Trenching Report, Black Lake Property, Ontario, Cameco Corporation., MNM Assessment File Research Imaging (AFRI), AFRI#52J04NE2001.

Devaney, J.R., 2000. Regional Geology of the Sioux Lookout Orogenic Belt, Western Wabigoon Subprovince: Stages of Archean Volcanism, Sedimentation, Tectonism and Mineralization; Ontario Geological Survey, Open file Report 6017, 158 pages.

Montsion, R., Thurston, P., Ayer, J., 2018, 1:2 000 000 Scale Geological Compilation of the Superior Craton – Version 1: Mineral Exploration Research Centre, Harquail School of Earth Sciences, Laurentian University Document Number MERC-ME-2018-017

13.0 STATEMENT OF QUALIFICATIONS

STATEMENT OF QUALIFICATIONS

I, Jim Edwards, of the town of Caledon, Ontario, do hereby swear and affirm that:

1. I am a Professional Geologist registered in good standing with the Association of Professional Geoscientists of Ontario (Membership #2215) (since 2009).
2. I have an Honours B.Sc. degree in Geology from Laurentian University in Sudbury, ON.
3. I was employed as an exploration geologist by several major mining companies and the public sector on a full-time or contract basis from 1992 to 2022 throughout Ontario. From 2005 to March 2015. I was employed at the Musselwhite gold mine as a Senior Geologist. Mine Geologist in 2016 with Harte Gold at the Sugar Zone. In 2017-2018 Employed as a Senior Project Geologist with Agnico Eagle Nunavut. I consulted in 2019-2020 and have been employed by Auteco Minerals since September 2021.
4. I am currently an Exploration Manager at Auteco Minerals and personally overseen the geological work and directly supervised all contractors and employees on site.
5. I have no financial interest in Auteco Minerals or the properties it owns.

Jim Edwards

Date: _June 6, 2022

STATEMENT OF QUALIFICATIONS

I, Elizabeth Vida, of the city of Thunder Bay, Ontario, do hereby swear and affirm that:

1. I am a Professional Geologist registered in good standing with the Professional Geoscientists of Ontario (Membership #1660) (since 2009).
2. I have an Honours B.Sc. (4 year) degree in Geology from University of Toronto in Toronto, ON.
3. I have been employed as a Consulting Geologist for over 30 years, managing exploration Projects worldwide and within Canada. I have held a director role with Midlands Minerals in their subsidiary companies. Currently, I am employed by Auteco Minerals since July 6, 2022.
4. I am currently a Regional Exploration Manager at Auteco Minerals and personally oversee all the geological work and directly supervise all contractors and employees on site and on remote locations.
5. I have no financial interest in Auteco Minerals or the properties it owns.

Elizabeth Vida

Date: July 14, 2022

APPENDICES

APPENDIX 1: INVOICES

APPENDIX 2: ASSAY CERTIFICATE

CLIENT NAME: REVEL RESOURCES (JV PROJECTS) LTD.
 LEVEL 3, 24 OUTRAM STREET, WEST PERTH
 WESTERN AUSTRALIA, AUSTRALIA 6005
 647-526-7094

ATTENTION TO: Tyrell Sutherland

PROJECT:

AGAT WORK ORDER: 20B639846

SOLID ANALYSIS REVIEWED BY: Siamak Agahzamin, Lab Technician

DATE REPORTED: Apr 12, 2022

PAGES (INCLUDING COVER): 10

Should you require any information regarding this analysis please contact your client services representative at (905) 501-9998

***Notes**

Disclaimer:

- All work conducted herein has been done using accepted standard protocols, and generally accepted practices and methods. AGAT test methods may incorporate modifications from the specified reference methods to improve performance.
- All samples will be disposed of within 90 days following analysis, unless expressly agreed otherwise in writing. Please contact your Client Project Manager if you require additional sample storage time.
- AGAT's liability in connection with any delay, performance or non-performance of these services is only to the Client and does not extend to any other third party. Unless expressly agreed otherwise in writing, AGAT's liability is limited to the actual cost of the specific analysis or analyses included in the services.
- This Certificate shall not be reproduced except in full, without the written approval of the laboratory.
- The test results reported herewith relate only to the samples as received by the laboratory.
- Measurement Uncertainty is not taken into consideration when stating conformity with a specified requirement.
- Application of guidelines is provided "as is" without warranty of any kind, either expressed or implied, including, but not limited to, warranties of merchantability, fitness for a particular purpose, or non-infringement. AGAT assumes no responsibility for any errors or omissions in the guidelines contained in this document.
- All reportable information as specified by ISO/IEC 17025:2017 is available from AGAT Laboratories upon request.



Certificate of Analysis

AGAT WORK ORDER: 20B639846
PROJECT:

5623 McADAM ROAD
MISSISSAUGA, ONTARIO
CANADA L4Z 1N9
TEL (905)501-9998
FAX (905)501-0599
http://www.agatlabs.com

CLIENT NAME: REVEL RESOURCES (JV PROJECTS) LTD.

ATTENTION TO: Tyrell Sutherland

(200-) Sample Login Weight

DATE SAMPLED: Aug 18, 2020	DATE RECEIVED: Aug 19, 2020	DATE REPORTED: Apr 12, 2022	SAMPLE TYPE: Drill Core
Sample ID (AGAT ID)	Analyte:	Sample Login Weight	
	Unit:	kg	
	RDL:	0.01	
H074901 (1368117)		.62	
H074902 (1368118)		.78	
H074903 (1368119)		.77	
H074904 (1368120)		1.30	
H074905 (1368121)		.93	
H074906 (1368122)		.77	
H074907 (1368123)		1.03	
H074908 (1368124)		1.13	
H074909 (1368125)		.81	
H074910 (1368126)		.56	
H074911 (1368127)		.88	
H074912 (1368128)		.96	
H074913 (1368129)		.57	
H074914 (1368130)		.60	
H074915 (1368131)		1.79	
H074916 (1368132)		.96	
H074917 (1368133)		.81	
H074918 (1368134)		.83	
H074919 (1368135)		1.54	
H074920 (1368136)		.87	
H074921 (1368137)		.68	
H074922 (1368138)		.92	
H074923 (1368139)		.67	
H074924 (1368140)		2.22	
H074925 (1368141)		1.35	
H074926 (1368142)		1.07	
H074927 (1368143)		.81	
H074928 (1368144)		1.32	
H074929 (1368145)		.76	
H074930 (1368146)		.96	
H074931 (1368147)		1.50	

Certified By:



Certificate of Analysis

AGAT WORK ORDER: 20B639846
PROJECT:

5623 McADAM ROAD
MISSISSAUGA, ONTARIO
CANADA L4Z 1N9
TEL (905)501-9998
FAX (905)501-0599
http://www.agatlabs.com

CLIENT NAME: REVEL RESOURCES (JV PROJECTS) LTD.

ATTENTION TO: Tyrell Sutherland

(200-) Sample Login Weight

DATE SAMPLED: Aug 18, 2020	DATE RECEIVED: Aug 19, 2020	DATE REPORTED: Apr 12, 2022	SAMPLE TYPE: Drill Core
----------------------------	-----------------------------	-----------------------------	-------------------------

Comments: RDL - Reported Detection Limit
Analysis performed at AGAT 1046 Gorham St, Thunder Bay, ON (unless marked by *)
Insufficient Sample : IS
Sample Not Received : SNR

Certified By: _____



Certificate of Analysis

AGAT WORK ORDER: 20B639846
PROJECT:

5623 McADAM ROAD
MISSISSAUGA, ONTARIO
CANADA L4Z 1N9
TEL (905)501-9998
FAX (905)501-0589
http://www.agatlabs.com

CLIENT NAME: REVEL RESOURCES (JV PROJECTS) LTD.

ATTENTION TO: Tyrell Sutherland

(202-552) Fire Assay - Trace Au, ICP-OES finish (50g charge) (ppm)

DATE SAMPLED: Aug 18, 2020	DATE RECEIVED: Aug 19, 2020	DATE REPORTED: Apr 12, 2022	SAMPLE TYPE: Drill Core
	Analyte: Au		
	Unit: ppm		
	RDL: 0.001		
Sample ID (AGAT ID)			
H074901 (1368117)		0.015	
H074902 (1368118)		0.004	
H074903 (1368119)		0.012	
H074904 (1368120)		0.057	
H074905 (1368121)		0.023	
H074906 (1368122)		0.010	
H074907 (1368123)		0.008	
H074908 (1368124)		0.003	
H074909 (1368125)		0.004	
H074910 (1368126)		0.003	
H074911 (1368127)		0.004	
H074912 (1368128)		0.002	
H074913 (1368129)		0.043	
H074914 (1368130)		0.033	
H074915 (1368131)		0.016	
H074916 (1368132)		0.873	
H074917 (1368133)		0.045	
H074918 (1368134)		0.006	
H074919 (1368135)		0.008	
H074920 (1368136)		0.003	
H074921 (1368137)		.007	
H074922 (1368138)		.0064	
H074923 (1368139)		.094	
H074924 (1368140)		.015	
H074925 (1368141)		.012	
H074926 (1368142)		.013	
H074927 (1368143)		.0436	
H074928 (1368144)		.015	
H074929 (1368145)		.0167	
H074930 (1368146)		.010	
H074931 (1368147)		.003	

Certified By:



Certificate of Analysis

AGAT WORK ORDER: 20B639846
PROJECT:

5623 McADAM ROAD
MISSISSAUGA, ONTARIO
CANADA L4Z 1N9
TEL (905)501-9998
FAX (905)501-0599
http://www.agatlabs.com

CLIENT NAME: REVEL RESOURCES (JV PROJECTS) LTD.

ATTENTION TO: Tyrell Sutherland

(202-552) Fire Assay - Trace Au, ICP-OES finish (50g charge) (ppm)

DATE SAMPLED: Aug 18, 2020

DATE RECEIVED: Aug 19, 2020

DATE REPORTED: Apr 12, 2022

SAMPLE TYPE: Drill Core

Comments: RDL - Reported Detection Limit
Analysis performed at AGAT 1046 Gorham St, Thunder Bay, ON (unless marked by *)
Insufficient Sample : IS
Sample Not Received : SNR

Certified By:



Certificate of Analysis

AGAT WORK ORDER: 20B639846

PROJECT:

5623 McADAM ROAD
MISSISSAUGA, ONTARIO
CANADA L4Z 1N9
TEL (905)501-9998
FAX (905)501-0599
http://www.agatlabs.com

CLIENT NAME: REVEL RESOURCES (JV PROJECTS) LTD.

ATTENTION TO: Tyrell Sutherland

Sieving - % Passing (Crushing)

DATE SAMPLED: Aug 18, 2020	DATE RECEIVED: Aug 19, 2020	DATE REPORTED: Apr 12, 2022	SAMPLE TYPE: Drill Core
Analyte:	Pass %		
Unit:	%		
Sample ID (AGAT ID)	RDL:	0.01	
H074901 (1368117)		80.5	
H074921 (1368137)		76.5	

Comments: RDL - Reported Detection Limit
Analysis performed at AGAT 1046 Gorham St, Thunder Bay, ON (unless marked by *)
Insufficient Sample: IS
Sample Not Received: SNR

Certified By:



Certificate of Analysis

AGAT WORK ORDER: 20B639846
PROJECT:

5623 McADAM ROAD
MISSISSAUGA, ONTARIO
CANADA L4Z 1N9
TEL (905)501-9998
FAX (905)501-0599
http://www.agatlabs.com

CLIENT NAME: REVEL RESOURCES (JV PROJECTS) LTD.

ATTENTION TO: Tyrell Sutherland

Sieving - % Passing (Pulverizing)			
DATE SAMPLED: Aug 18, 2020	DATE RECEIVED: Aug 19, 2020	DATE REPORTED: Apr 12, 2022	SAMPLE TYPE: Drill Core
Analyte:	Pass %		
Unit:	%		
Sample ID (AGAT ID)	RDL:	0.01	
H074902 (1368118)		95	

Comments: RDL - Reported Detection Limit
Analysis performed at AGAT 1046 Gorham St, Thunder Bay, ON (unless marked by *)
Insufficient Sample : IS
Sample Not Received : SNR

Certified By:



Quality Assurance - Replicate
AGAT WORK ORDER: 20B639846
PROJECT:

5623 McADAM ROAD
 MISSISSAUGA, ONTARIO
 CANADA L4Z 1N9
 TEL (905)501-9998
 FAX (905)501-0599
 http://www.agatlabs.com

CLIENT NAME: REVEL RESOURCES (JV PROJECTS) LTD.

ATTENTION TO: Tyrell Sutherland

(202-552) Fire Assay - Trace Au, ICP-OES finish (50g charge) (ppm)																
Parameter	REPLICATE #1				REPLICATE #2				REPLICATE #3							
	Sample ID	Original	Replicate	RPD	Sample ID	Original	Replicate	RPD	Sample ID	Original	Replicate	RPD				
Au	1368117	0.015	0.016	7.5%	1368132	0.873	0.763	13.4%	1368142	.013	.017	26.7%				



Quality Assurance - Certified Reference materials
 AGAT WORK ORDER: 20B639846
 PROJECT:

5623 McADAM ROAD
 MISSISSAUGA, ONTARIO
 CANADA L4Z 1N9
 TEL (905)501-9998
 FAX (905)501-0599
 http://www.agatlabs.com

CLIENT NAME: REVEL RESOURCES (JV PROJECTS) LTD.

ATTENTION TO: Tyrell Sutherland

(202-552) Fire Assay - Trace Au, ICP-OES finish (50g charge) (ppm)												
Parameter	CRM #1 (GSZT)				CRM #2 (GS7H)							
	Expect	Actual	Recovery	Limits	Expect	Actual	Recovery	Limits				
Au	1.75	1.80	103%	90% - 110%	6.56	6.64	101%	90% - 110%				



Method Summary

CLIENT NAME: REVEL RESOURCES (JV PROJECTS) LTD.

AGAT WORK ORDER: 20B639846

PROJECT:

ATTENTION TO: Tyrell Sutherland

SAMPLING SITE:

SAMPLED BY:

PARAMETER	AGAT S.O.P	LITERATURE REFERENCE	ANALYTICAL TECHNIQUE
Solid Analysis			
Sample Login Weight	MIN-12009		BALANCE
Au	MW-200-12006	BUGBEE, E;A Textbook of Fire Assay	ICP/OES
Pass %			BALANCE