

We are committed to providing [accessible customer service](#).

If you need accessible formats or communications supports, please [contact us](#).

Nous tenons à améliorer [l'accessibilité des services à la clientèle](#).

Si vous avez besoin de formats accessibles ou d'aide à la communication, veuillez [nous contacter](#).

## Cover

Exploration and Technical report: 2022 Mechanical stripping and pitting program, District of Sudbury, township of Cunningham. Hereinafter called the "Allen Lake project"

Written by Andy Dziadura (409503) for 1537763 Ontario inc. (411961)

Work performed by 1551970 Ontario inc. and Andy Dziadura, work duration 2 days December 3, 2022 and December 4, 2022, total duration 4 days including travel to and from the area. Mobilization by 1551970 Ontario inc.

## Technical Report (Revised)

### The Allen Lake Project

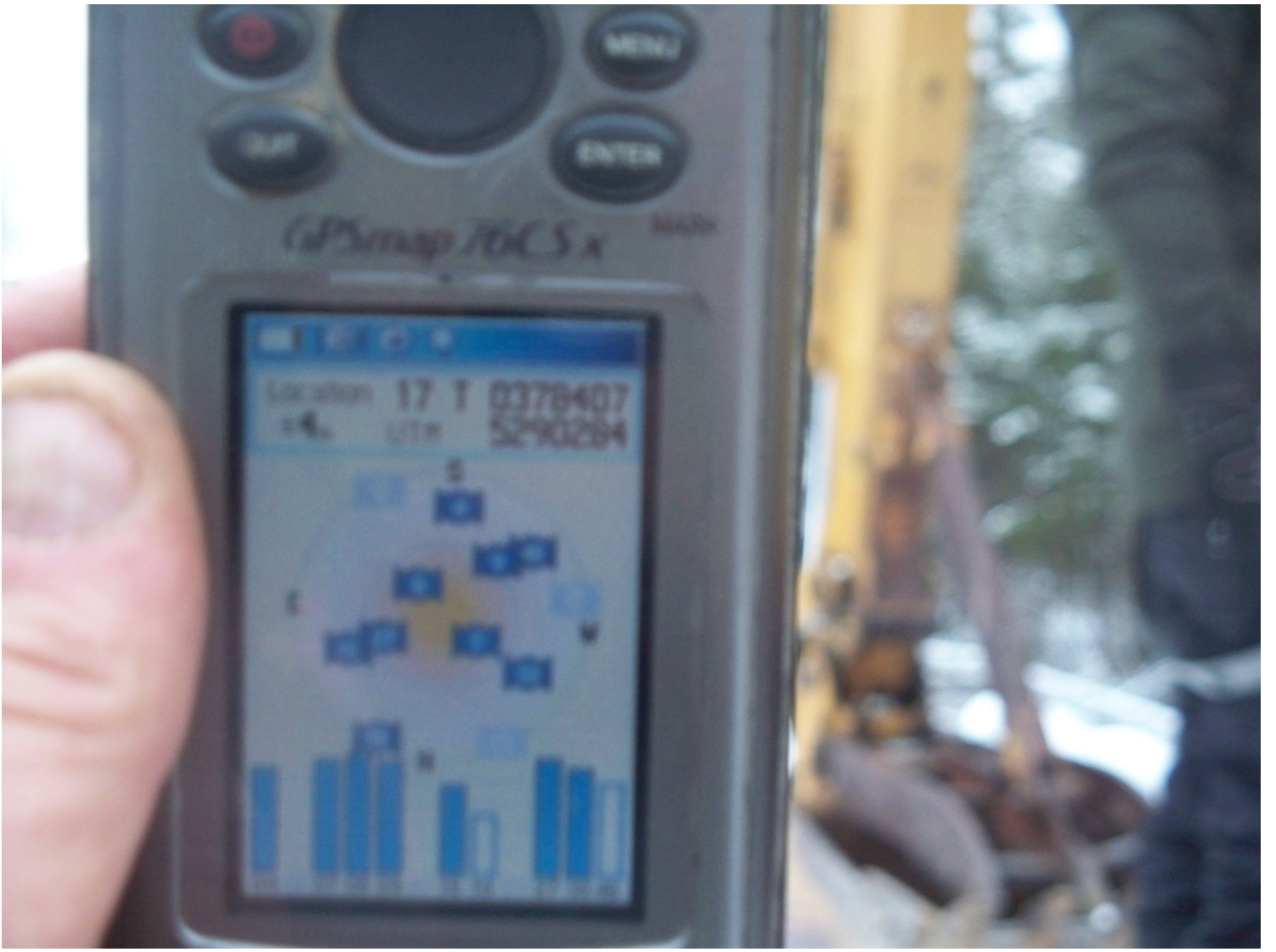
The purpose of the work performed was to explore a claim group in Cunningham township, Porcupine mining division consisting of 6 Boundary claims. Claim numbers (105297, 125220, 125221, 188690, 255343, 321748) formally legacy claim # 4275506 the claims are contiguous and are located approximately 100km south west of Timmins Ontario in the district of Sudbury.

The work was performed according to **exploration plan number PL-22-00016**. The work was performed on claim number 105297 that is within cell number **41015A361 on the Provincial grid (NTS sheet)**. Access to the claim group is from the Dore road, now sometimes called the Foleyet Timber road that runs north, south between the Sultan road and highway # 101, then west and north on an unnamed road (sometimes called "the Garnet Road") located just south of a bridge that spans the Wakami river at the mile 48 marker, approximately 10km to an unnamed road at UTM zone 17 379213 E and 5290649 N, then north west approximately .5km on said road to another unnamed road at UTM zone 17 379906 E and 5290855 N then south/west for approximately 1km to enter the claim group from the north side. Access to site was gained through unpatented claim #208609 and then #105297. The commodity looked for Gold (Precious Metal). On claim #105297 an area approximately 4'-0" x 4'-0" at UTM zone 17 378407 E and 5290284 N was cleared to expose the bedrock, depth of overburden was approximately 8" to 9" average. What appeared to be Swayze greenstone was observed (Basalt rock type), however the colour of this greenstone seemed darker than what would be expected, quartz veining was present, width of the veining was average +/- .25". This veining was examined and negligible Gold was observed. On the next trip to the site the scrapped area was expanded 4'-0" to the east. In addition to Swayze Greenstone, iron formation with quartz veining was observed (sedimentary rock type), the quartz veining showed very little gold, what is believed to be embedded pyrite was observed in iron formation at approximately 1%, also a small amount of what appeared to be Jasper (sedimentary rock type) in one area was found, no quartz veining was observed in this sample. **The total volume of material stripped was approximately .65 cubic meters. No visible rock outcrops were noted at the work site itself or during travel to the work site.** It is recommended that further exploration work be done on this claim group due to the present findings and the history of this area with the Swayze Huycke finding/mine of 1934 in close proximity to this claim group.

Claim # 105297 Cell # 41015 A361  
 Exploration plan # PL-22-00016  
 Cuyahoga Township  
 stripping Dec 3 and Dec 4 2002  
 work done by 1951970 Caterpillar  
 Inc Caterpillar 225 operator  
 245.00 per hour inc. operator  
 and fuel. Dec 3/22 start time  
 9:00 am, stop time 5:30 pm toward  
 to ~~site~~ job 3 hrs UTM (378407E  
 5290292N)  
 overburden 8" to 9" over 4' x 4'  
 Dark colored average Greenstone  
 (Basalt rock) some quartz veining  
 1/4" + - thick not much gold  
 Dec 4/22 Stripper to east side  
 of previous area starting 8:00 am  
 stop time 5:30 pm overburden  
 8" to 9" over stripped 4' x 4' Dark  
 greenstone in west side iron formation  
 on east side. Iron has ± 1% pyrite  
 some quartz veining ± 1/4" thick, very  
 little gold found. Greenstone is Basalt  
 and iron formation is sedimentary  
 rock type, quartz is fibrous, irregular  
 rock type. Sent machine away  
 at 5:30 pm return toward 3 hrs.  
 No cut crops seen on way or at  
 site. More quartz seen  
 on the greenstone than the iron  
 formation. Small amount of red  
 Jasper seen on south east ~~corner~~  
 (no quartz veining in the Jasper  
 sedimentary rock) south west of  
 here is more true jasper and should  
 be done next.

NOTES











FIND

PAGE

⏻

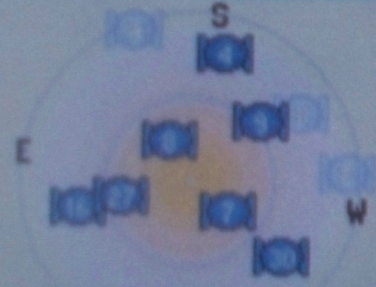
MENU

QUIT

ENTER

GPSmap 76CSx MARK

Location 17 T 0378406  
±3m UTM 5290283



N









QUIT MENU ENTER

GPSmap 76CSx MARK



















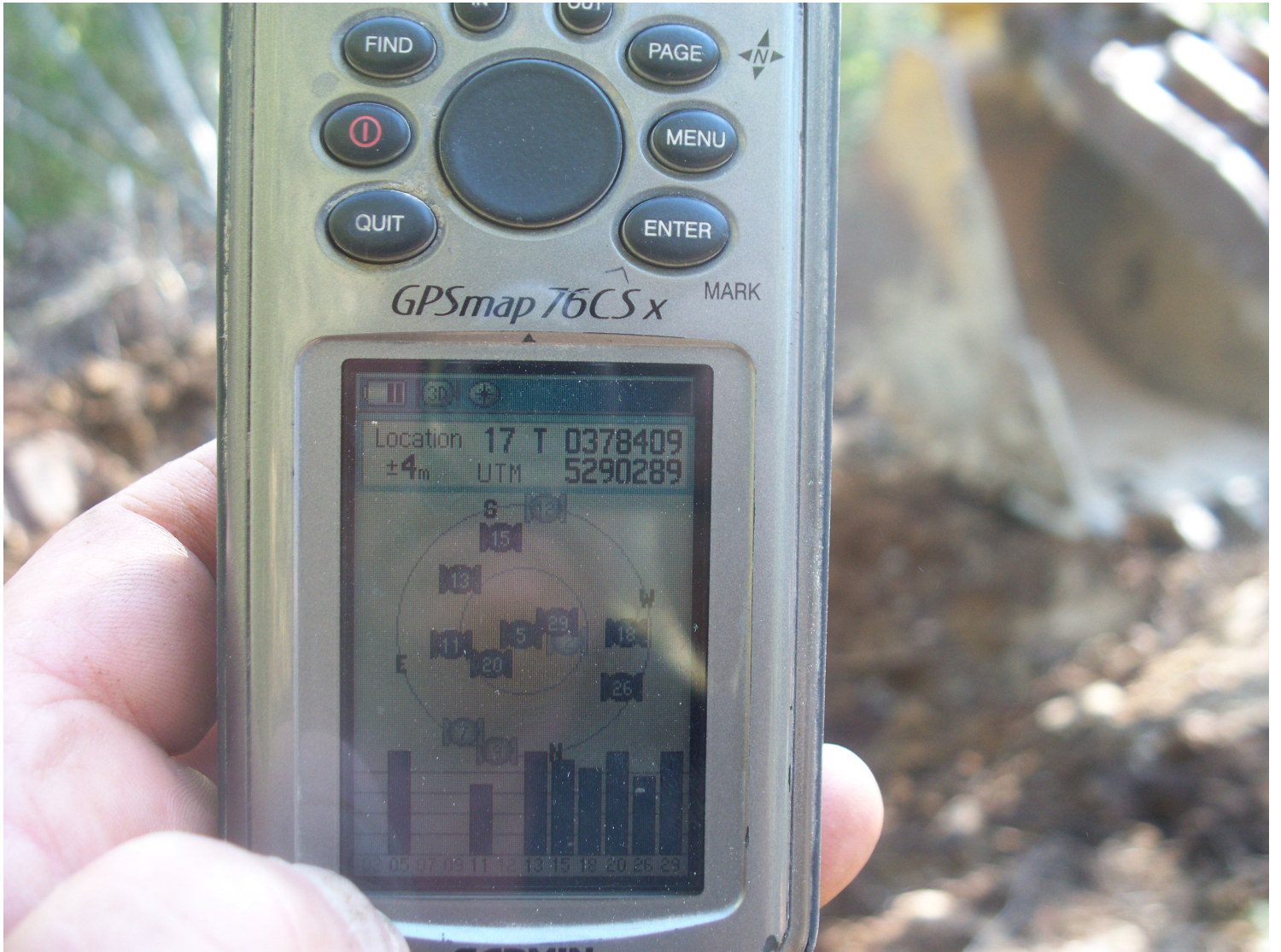




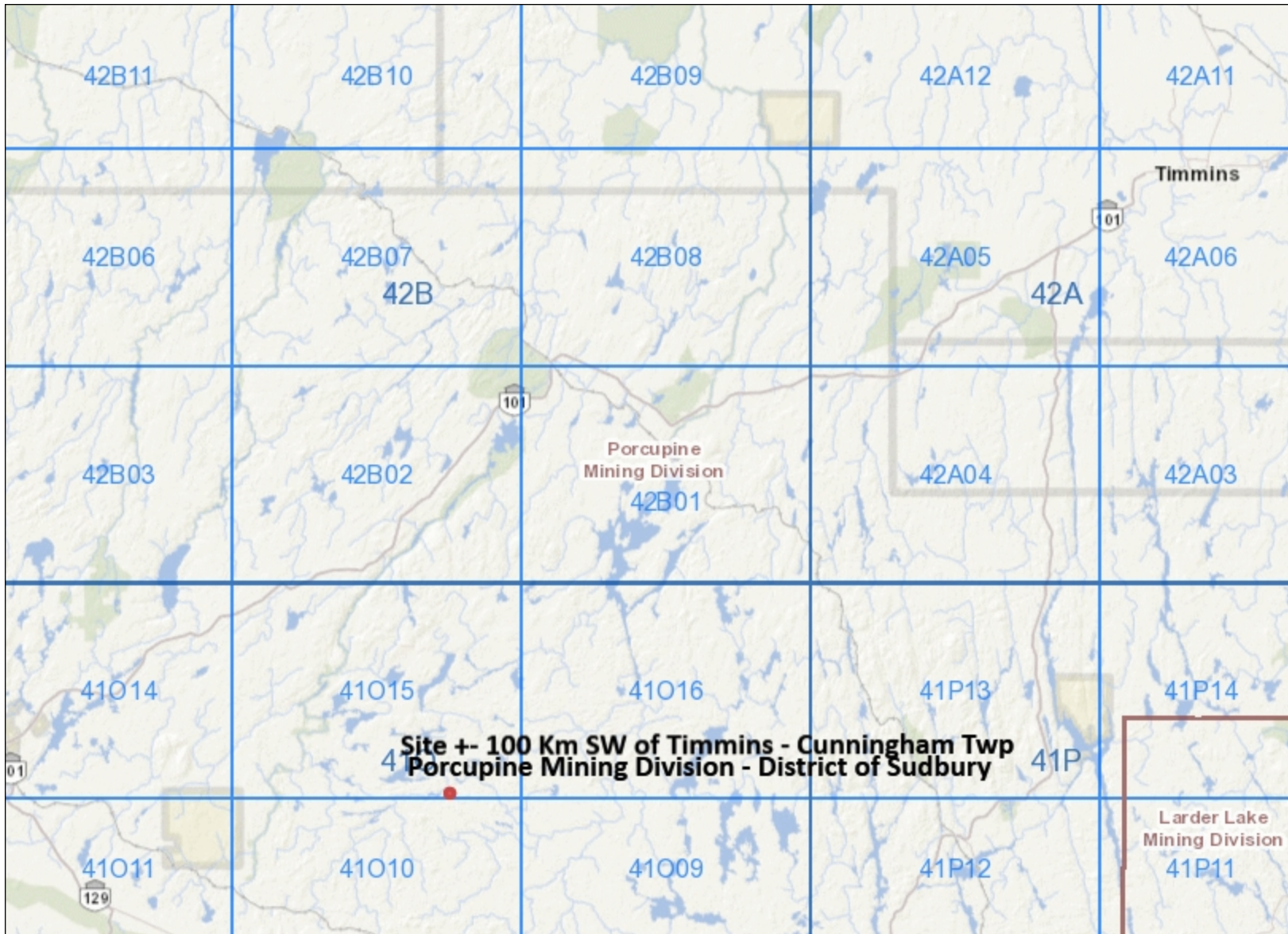








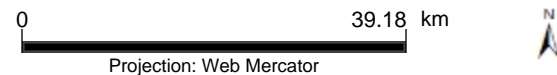




### Legend

- Provincial Grid Cell**
  - Available
  - Pending
  - Unavailable
- Mining Claim**
  - Mining Claim
  - Boundary Claim
- Alienation**
  - Withdrawal
  - Notice
- MINES Administrative Boundaries**
  - MINES Townships and Areas
  - Geographic Lot Fabric
  - UTM Grid 1K
  - UTM Grid 10K
  - Mining Division
  - Mineral Exploration and Development Region
  - CLUPA Protected Area - Far North
  - Resident Geologist District
  - Federal Land Other
  - Native Reserves
- AMIS**
  - AMIS Sites
  - AMIS Features
  - Drill Hole
  - Mineral Occurrences
- MLAS Mining History**
  - Withdrawal - History
  - Notice - History
  - Mining Claim - History
  - Mining Land Tenure - History
  - Legacy Claim
- Provincial Grid**
  - Provincial Grid 250K
  - Provincial Grid 50K
  - Provincial Grid Group
- Land Tenure**
  - Surface Rights
  - Mining Rights
  - Mining and Surface Rights
  - Order-in-Council

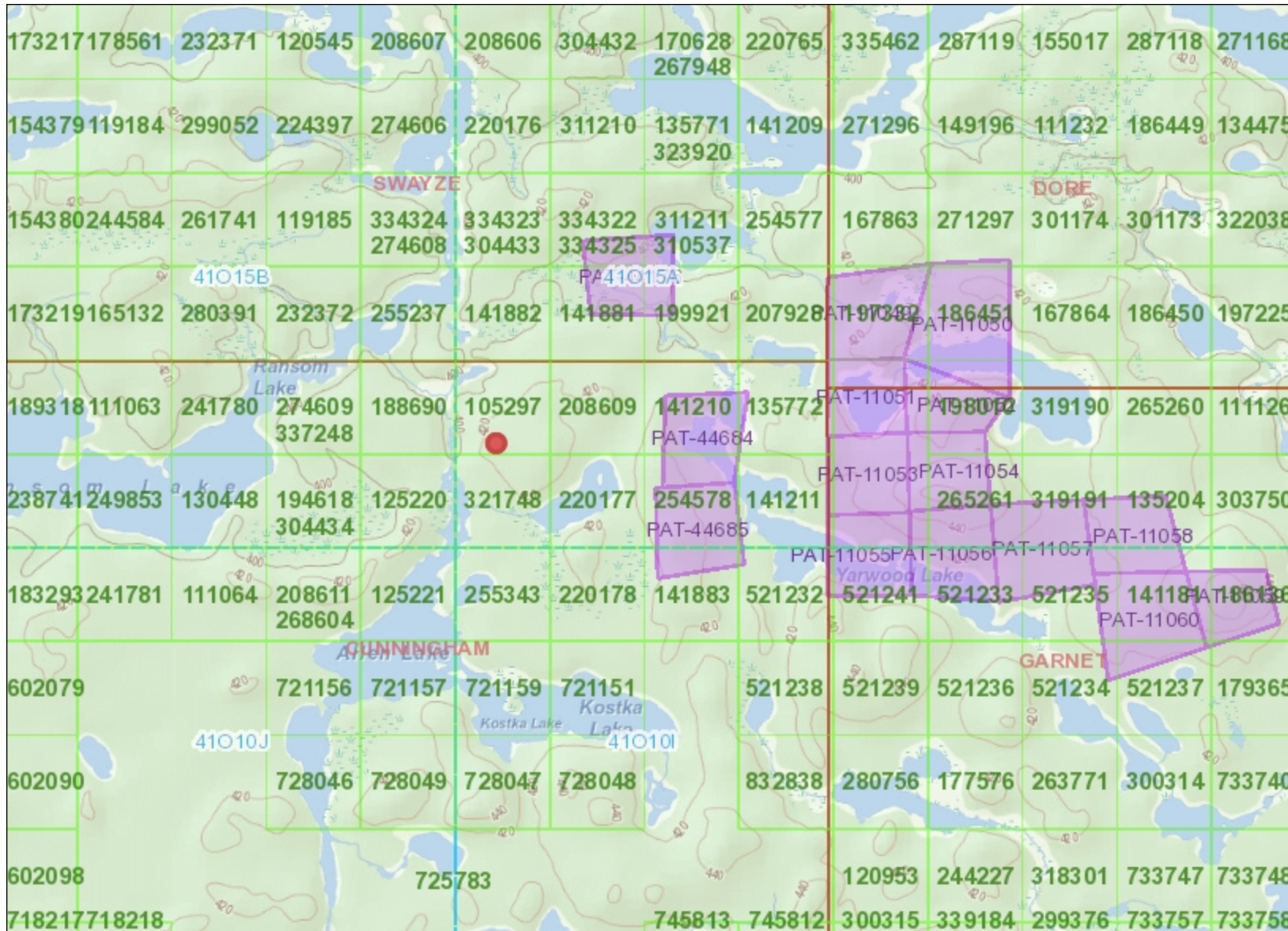
Those wishing to register mining claims should consult with the Provincial Mining Recorders' Office of the Ministry of Mines (MINES) for additional information on the status of the lands shown hereon. This map is not intended for navigational, survey, or land title determination purposes as the information shown on this map is compiled from various sources. Completeness and accuracy are not guaranteed. Additional information may also be obtained through the local Land Titles or Registry Office, or the Ministry of Natural Resources and Forestry. The information shown is derived from digital data available in the Provincial Mining Recorders' Office at the time of downloading from the Ministry of Mines (MINES) web site.



Imagery Copyright Notices: Ministry of Natural Resources and Forestry (MNR); NASA Landsat Program; First Base Solutions Inc.; Aéro-Photo (1961) Inc.; DigitalGlobe Inc.; U.S. Geological Survey.) web site.  
© King's Printer for Ontario, 2023







### Legend

- Provincial Grid Cell**
  - Available
  - Pending
  - Unavailable
- Mining Claim**
  - Mining Claim
  - Boundary Claim
- Alienation**
  - Withdrawal
  - Notice
- MINES Administrative Boundaries**
  - MINES Townships and Areas
  - Geographic Lot Fabric
  - UTM Grid 1K
  - UTM Grid 10K
  - Mining Division
  - Mineral Exploration and Development Region
  - CLUPA Protected Area - Far North
  - Resident Geologist District
  - Federal Land Other
  - Native Reserves
- AMIS Sites**
  - AMIS Sites
  - AMIS Features
  - Drill Hole
  - Mineral Occurrences
- MLAS Mining History**
  - Withdrawal - History
  - Notice - History
  - Mining Claim - History
  - Mining Land Tenure - History
  - Legacy Claim
- Provincial Grid**
  - Provincial Grid 250K
  - Provincial Grid 50K
  - Provincial Grid Group
- Land Tenure**
  - Surface Rights
  - Mining Rights
  - Mining and Surface Rights
  - Order-in-Council

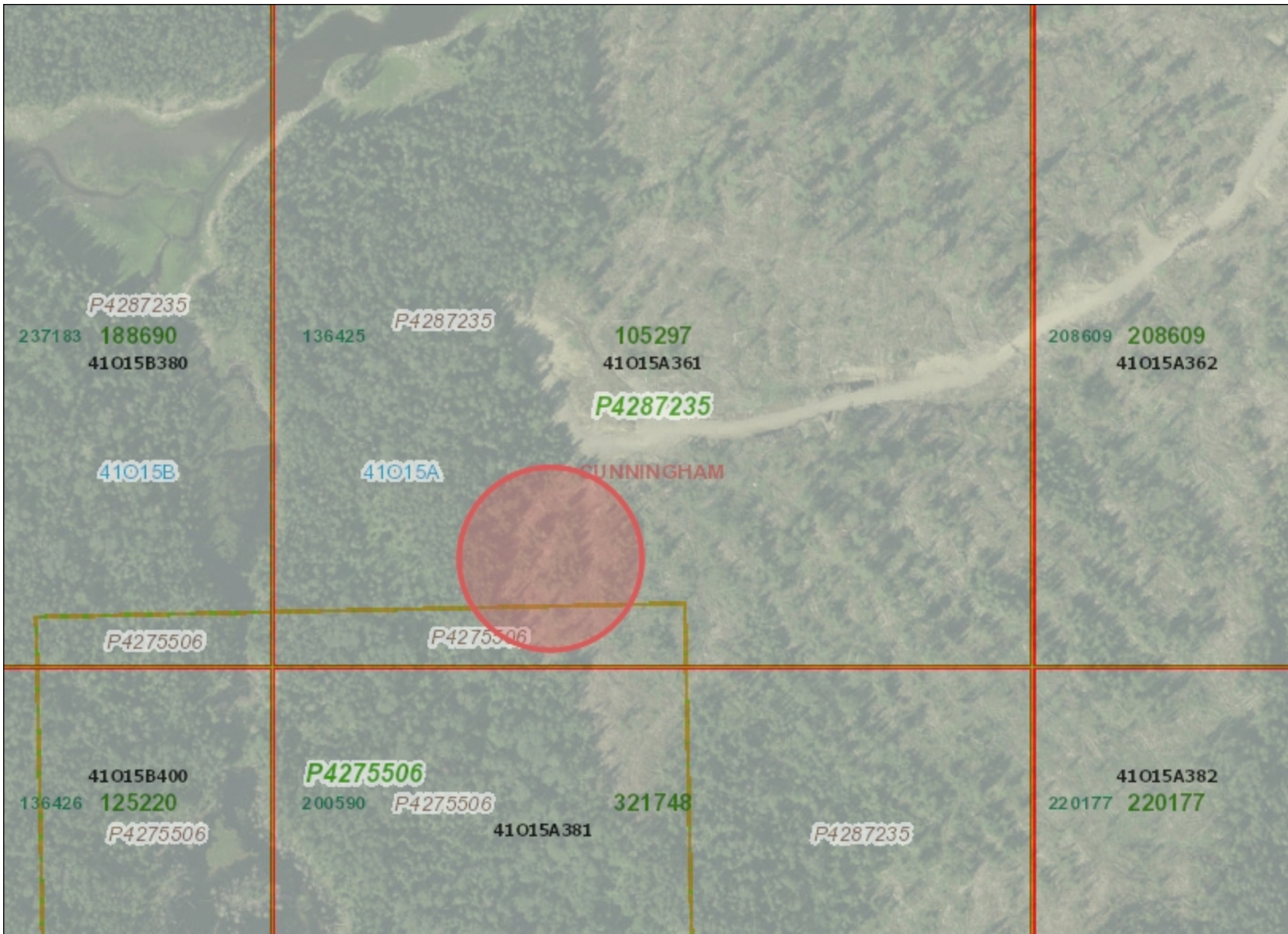
Those wishing to register mining claims should consult with the Provincial Mining Recorders' Office of the Ministry of Mines (MINES) for additional information on the status of the lands shown hereon. This map is not intended for navigational, survey, or land title determination purposes as the information shown on this map is compiled from various sources. Completeness and accuracy are not guaranteed. Additional information may also be obtained through the local Land Titles or Registry Office, or the Ministry of Natural Resources and Forestry. The information shown is derived from digital data available in the Provincial Mining Recorders' Office at the time of downloading from the Ministry of Mines (MINES) web site.



Imagery Copyright Notices: Ministry of Natural Resources and Forestry (MNR); NASA Landsat Program; First Base Solutions Inc.; Aéro-Photo (1961) Inc.; DigitalGlobe Inc.; U.S. Geological Survey.) web site.  
© King's Printer for Ontario, 2023







### Legend

- Provincial Grid Cell**
  - Available
  - Pending
  - Unavailable
- Mining Claim**
  - Mining Claim
  - Boundary Claim
- Alienation**
  - Withdrawal
  - Notice
- MINES Administrative Boundaries**
  - MINES Townships and Areas
  - Geographic Lot Fabric
  - UTM Grid 1K
  - UTM Grid 10K
  - Mining Division
  - Mineral Exploration and Development Region
  - CLUPA Protected Area - Far North
  - Resident Geologist District
  - Federal Land Other
  - Native Reserves
  - AMIS Sites
  - AMIS Features
  - Drill Hole
  - Mineral Occurrences
- MLAS Mining History**
  - Withdrawal - History
  - Notice - History
  - Mining Claim - History
  - Mining Land Tenure - History
  - Legacy Claim
- Provincial Grid**
  - Provincial Grid 250K
  - Provincial Grid 50K
  - Provincial Grid Group
- Land Tenure**
  - Surface Rights
  - Mining Rights
  - Mining and Surface Rights
  - Order-in-Council

Those wishing to register mining claims should consult with the Provincial Mining Recorders' Office of the Ministry of Mines (MINES) for additional information on the status of the lands shown hereon. This map is not intended for navigational, survey, or land title determination purposes as the information shown on this map is compiled from various sources. Completeness and accuracy are not guaranteed. Additional information may also be obtained through the local Land Titles or Registry Office, or the Ministry of Natural Resources and Forestry. The information shown is derived from digital data available in the Provincial Mining Recorders' Office at the time of downloading from the Ministry of Mines (MINES) web site.



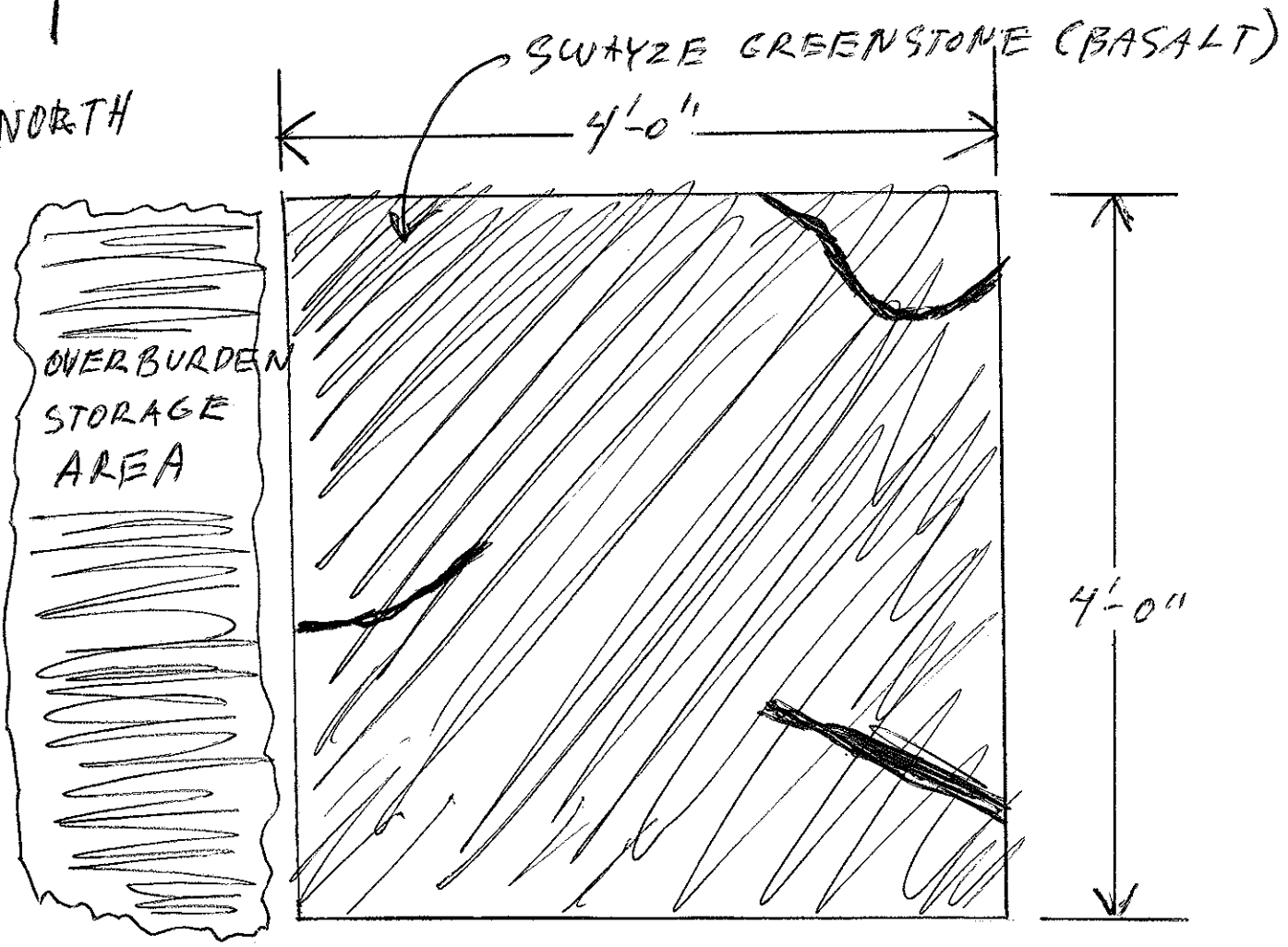
Imagery Copyright Notices: Ministry of Natural Resources and Forestry (MNR); NASA Landsat Program; First Base Solutions Inc.; Aéro-Photo (1961) Inc.; DigitalGlobe Inc.; U.S. Geological Survey.) web site.  
© King's Printer for Ontario, 2023





STRIPPED AREA #1  
ALLEN LAKE PROJECT  
DETAIL MAP

NORTH ↑



QUARTZ  
VENUING



OVERBURDEN  
STORAGE AREA



SWAYZE  
GREENSTONE (DARK)  
(BASALT ROCK)

MAP SCALE 1:12



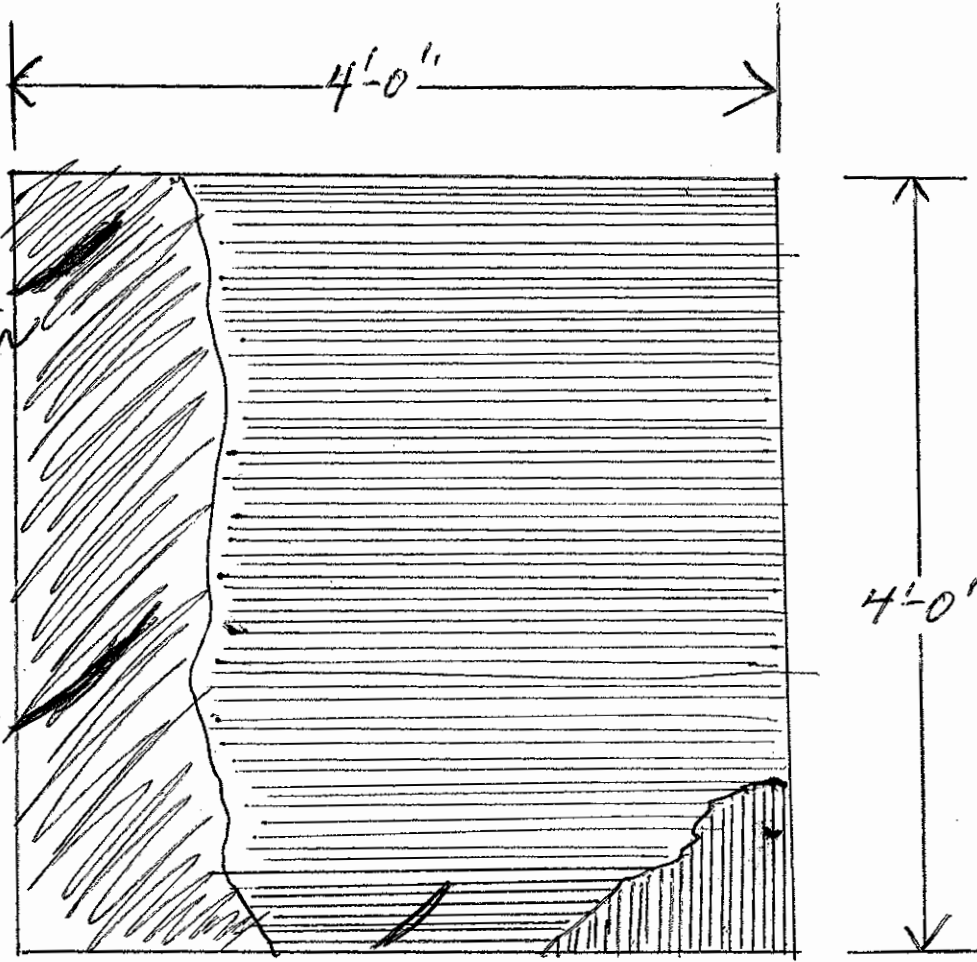
ONE INCHES = 12 INCHES / 1 FOOT

STRIPPED AREA #2  
ALLEN LAKE PROJECT

DETAIL MAP



NORTH



OVERBURDEN  
STORAGE  
AREA

4'-0"

4'-0"

PREVIOUSLY STRIPPED  
AREA

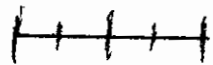
QUARTZ  
VEINING

SWAYZE GREENSTONE  
DARK (BASALT)

IRON FORMATION  
(SEDIMENTARY ROCK)  
190 PYRITE

JASPER (SEDIMENTARY)

MAP SCALE 1:12



ONE INCH = 12 INCHES / 1 FOOT