

We are committed to providing [accessible customer service](#).

If you need accessible formats or communications supports, please [contact us](#).

Nous tenons à améliorer [l'accessibilité des services à la clientèle](#).

Si vous avez besoin de formats accessibles ou d'aide à la communication, veuillez [nous contacter](#).

Cover

Technical report late 2022

Yarwood wood lake project-Claims , 521241, 521239, 521236, 521233, 521235, 521234,

521237. Completion date May 11, 2023 :Authored by Andy Dziadura.

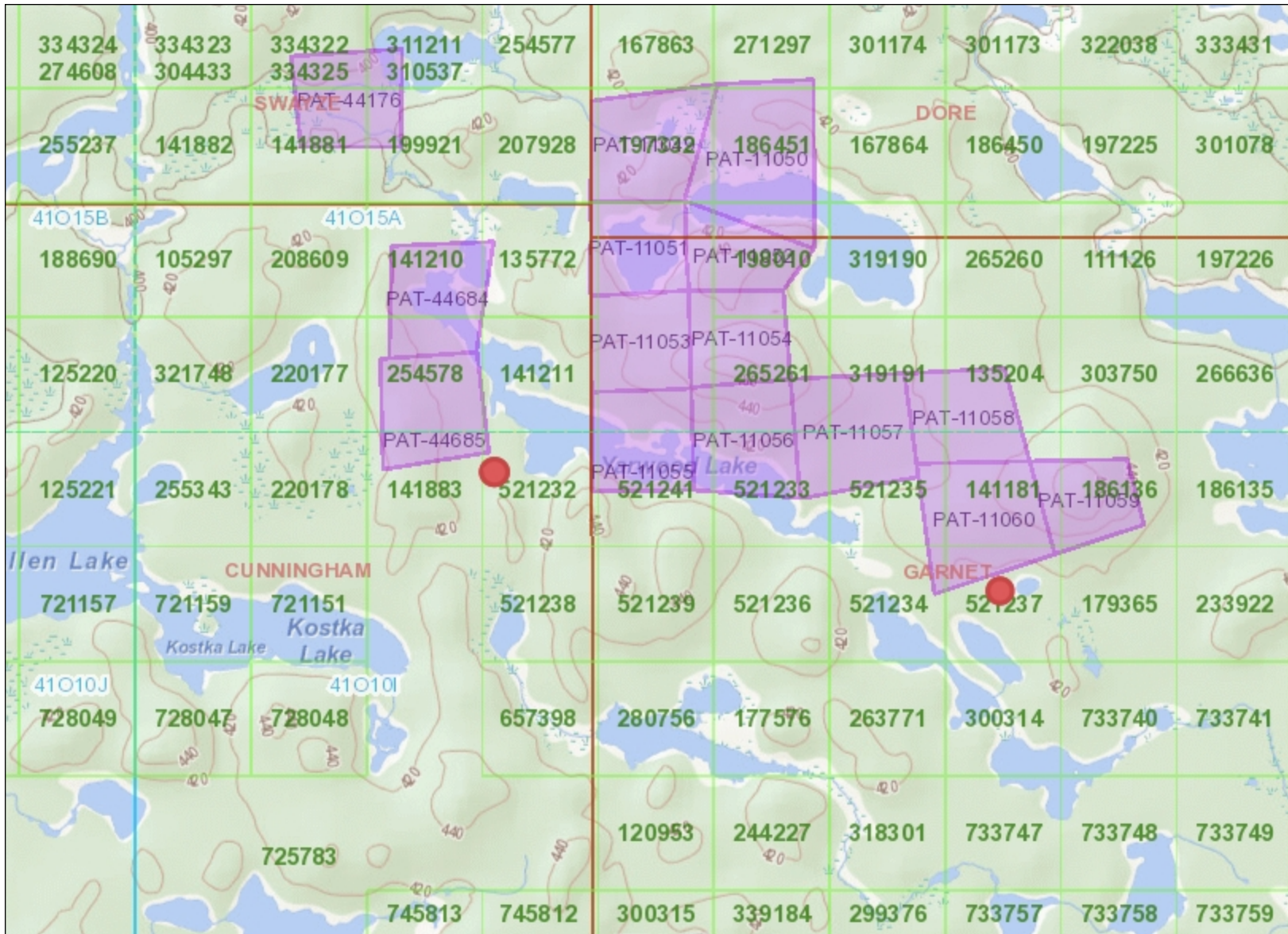
Technical report : 2022 Mechanical stripping and pitting program, townships of Cunningham and Garnet. Completed May December 19, 2022.

Written by Andy Dziadura (409503) for 1537763 Ontario inc. (411961)

Work performed by 1551970 Ontario inc. and Andy Dziadura on two occasions December 10, 11, 12, 2022 and December 18 and 19, 2022. Duration 9 days including travel.

Report: The purpose of the work performed was to explore a claim group consisting of 9 unpatented claims located in the mining division of porcupine, Sudbury district, townships of Cunningham and Garnet. Claim numbers as follows 521232, 521238, 521241, 521239, 521236, 521233, 521235, 521234, 521237. The claims are contiguous and located approximately 100km southwest of Timmins Ontario in the district of Sudbury. The claim group is accessed from the Dore road that runs north south between highway 101 and the Sultan industrial road and turning west at approximately mile 48/km 77 (as marked) on an unnamed road (sometimes called the Garnet Road), traveling first west then north for approximately 8km then turning east for a distance one half of 1 km to the western boundary of the claim group at claim #521232. The claims that work was performed on in regards to this report are 521237 and 521232. The provincial cell numbers of these claims are 410101028 and 410101004 respectively. Work was performed according to Exploration Plan PL-22-000117. The commodity explored for on the claims was gold (precious metal). On claim 521232 an area of approximately 4'-0" x 6'-0" was stripped at UTM zone 17 E 0379606 N 5289625, what was believed to be Iron formation was encountered at +- 10" depth (sedimentary rock) what was believed to be embedded pyrite was observed at approximately 1% to 2%. Total overburden removal was approximately .5 to .75 cubic meters. No outcrops were observed during the course of this work, although samples were closely observed none were removed from the site. Access to this claim was gained through unpatented claim # 141883. See detail map (scrap #1). On claim # 521237 an area approximately 6'-0" x 6'-0" x 11" deep was exposed at UTM zone 17 E 0381667 N 5289129. What was believed to be Swayze greenstone (Basalt rock type) was encountered with some quartz veining present, however gold was not observed in these veins, a small amount of what is believed to be red Jasper stone (igneous rock) was observed in one area along with a larger area of iron formation (sedimentary rock) with a small amount of pyrite embedded at less than 1%. The amount of over burden removal was approximately .95 cubic meters. See detail map (scrap #2). No significant rock outcrops were observed and no samples were removed from site as no gold was detected during the exploration process. Access to this claim was gained through patented claim #11060.

It is recommended that further work in other areas of this large claim group be carried out, due to the present findings and history of the area.



Legend

- Provincial Grid Cell**
 - Available
 - Pending
 - Unavailable
- Mining Claim**
 - Mining Claim
 - Boundary Claim
- Alienation**
 - Withdrawal
 - Notice
- MINES Administrative Boundaries**
 - MINES Townships and Areas
 - Geographic Lot Fabric
 - UTM Grid 1K
 - UTM Grid 10K
 - Mining Division
 - Mineral Exploration and Development Region
 - CLUPA Protected Area - Far North
 - Resident Geologist District
 - Federal Land Other
 - Native Reserves
- AMIS Sites**
 - AMIS Sites
 - AMIS Features
 - Drill Hole
 - Mineral Occurrences
- MLAS Mining History**
 - Withdrawal - History
 - Notice - History
 - Mining Claim - History
 - Mining Land Tenure - History
 - Legacy Claim
- Provincial Grid**
 - Provincial Grid 250K
 - Provincial Grid 50K
 - Provincial Grid Group
- Land Tenure**
 - Surface Rights
 - Mining Rights
 - Mining and Surface Rights
 - Order-in-Council

Those wishing to register mining claims should consult with the Provincial Mining Recorders' Office of the Ministry of Mines (MINES) for additional information on the status of the lands shown hereon. This map is not intended for navigational, survey, or land title determination purposes as the information shown on this map is compiled from various sources. Completeness and accuracy are not guaranteed. Additional information may also be obtained through the local Land Titles or Registry Office, or the Ministry of Natural Resources and Forestry. The information shown is derived from digital data available in the Provincial Mining Recorders' Office at the time of downloading from the Ministry of Mines (MINES) web site.



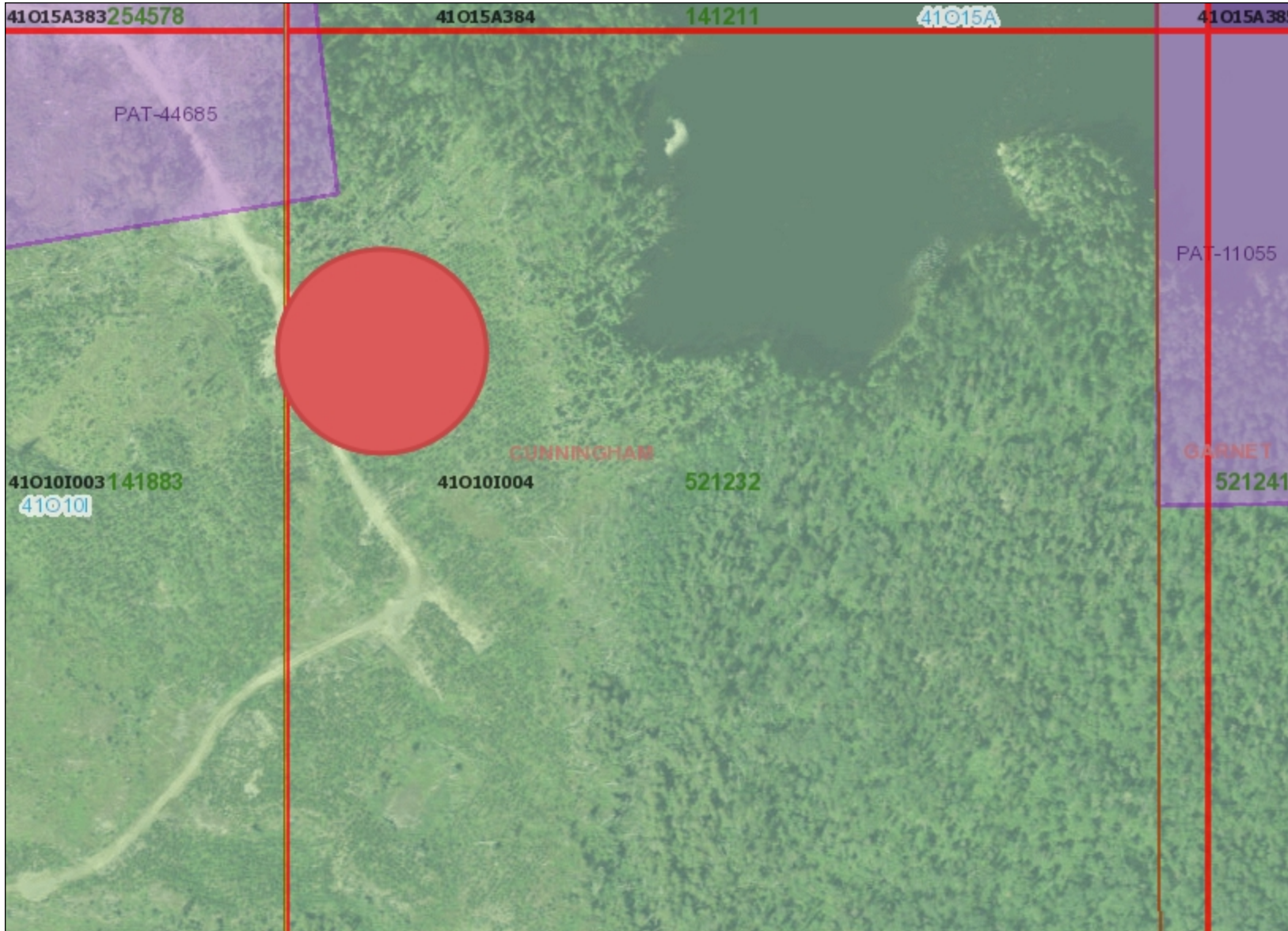
Projection: Web Mercator



Imagery Copyright Notices: Ministry of Natural Resources and Forestry (MNR); NASA Landsat Program; First Base Solutions Inc.; Aéro-Photo (1961) Inc.; DigitalGlobe Inc.; U.S. Geological Survey.) web site.

© King's Printer for Ontario, 2023





Legend

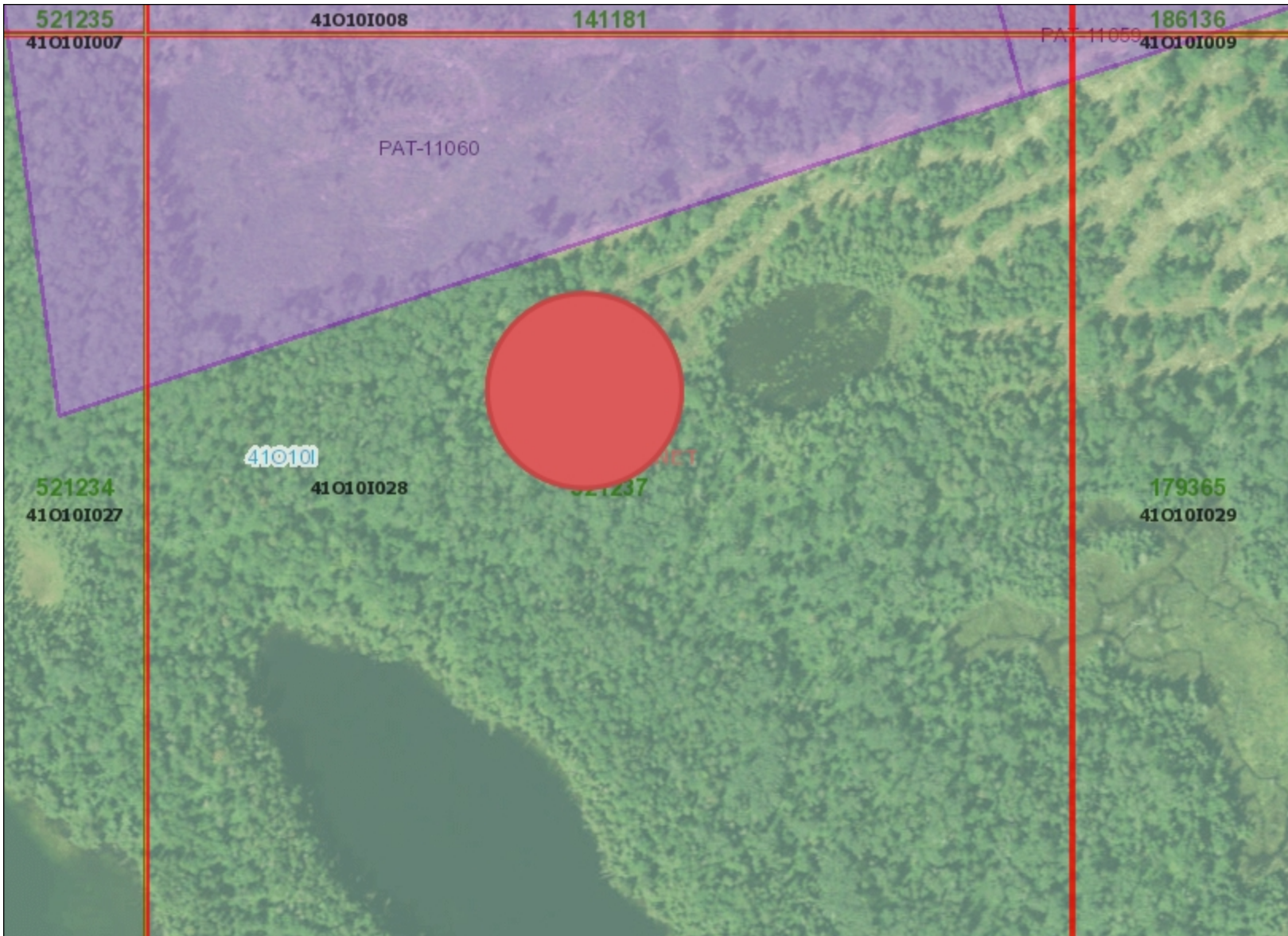
- Provincial Grid Cell**
 - Available
 - Pending
 - Unavailable
- Mining Claim**
 - Mining Claim
 - Boundary Claim
- Alienation**
 - Withdrawal
 - Notice
- MINES Administrative Boundaries**
 - MINES Townships and Areas
 - Geographic Lot Fabric
 - UTM Grid 1K
 - UTM Grid 10K
 - Mining Division
 - Mineral Exploration and Development Region
 - CLUPA Protected Area - Far North
 - Resident Geologist District
 - Federal Land Other
 - Native Reserves
- AMIS Sites**
 - AMIS Sites
 - AMIS Features
 - Drill Hole
 - Mineral Occurrences
- MLAS Mining History**
 - Withdrawal - History
 - Notice - History
 - Mining Claim - History
 - Mining Land Tenure - History
 - Legacy Claim
- Provincial Grid**
 - Provincial Grid 250K
 - Provincial Grid 50K
 - Provincial Grid Group
- Land Tenure**
 - Surface Rights
 - Mining Rights
 - Mining and Surface Rights
 - Order-in-Council

Those wishing to register mining claims should consult with the Provincial Mining Recorders' Office of the Ministry of Mines (MINES) for additional information on the status of the lands shown hereon. This map is not intended for navigational, survey, or land title determination purposes as the information shown on this map is compiled from various sources. Completeness and accuracy are not guaranteed. Additional information may also be obtained through the local Land Titles or Registry Office, or the Ministry of Natural Resources and Forestry. The information shown is derived from digital data available in the Provincial Mining Recorders' Office at the time of downloading from the Ministry of Mines (MINES) web site.



Imagery Copyright Notices: Ministry of Natural Resources and Forestry (MNR); NASA Landsat Program; First Base Solutions Inc.; Aéro-Photo (1961) Inc.; DigitalGlobe Inc.; U.S. Geological Survey.) web site.
© King's Printer for Ontario, 2023





Legend

- Provincial Grid Cell**
 - Available
 - Pending
 - Unavailable
- Mining Claim**
 - Mining Claim
 - Boundary Claim
- Alienation**
 - Withdrawal
 - Notice
- MINES Administrative Boundaries**
 - MINES Townships and Areas
 - Geographic Lot Fabric
 - UTM Grid 1K
 - UTM Grid 10K
 - Mining Division
 - Mineral Exploration and Development Region
 - CLUPA Protected Area - Far North
 - Resident Geologist District
 - Federal Land Other
 - Native Reserves
- AMIS Sites**
 - AMIS Sites
 - AMIS Features
 - Drill Hole
 - Mineral Occurrences
- MLAS Mining History**
 - Withdrawal - History
 - Notice - History
 - Mining Claim - History
 - Mining Land Tenure - History
 - Legacy Claim
- Provincial Grid**
 - Provincial Grid 250K
 - Provincial Grid 50K
 - Provincial Grid Group
- Land Tenure**
 - Surface Rights
 - Mining Rights
 - Mining and Surface Rights
 - Order-in-Council

Those wishing to register mining claims should consult with the Provincial Mining Recorders' Office of the Ministry of Mines (MINES) for additional information on the status of the lands shown hereon. This map is not intended for navigational, survey, or land title determination purposes as the information shown on this map is compiled from various sources. Completeness and accuracy are not guaranteed. Additional information may also be obtained through the local Land Titles or Registry Office, or the Ministry of Natural Resources and Forestry. The information shown is derived from digital data available in the Provincial Mining Recorders' Office at the time of downloading from the Ministry of Mines (MINES) web site.



Imagery Copyright Notices: Ministry of Natural Resources and Forestry (MNR); NASA Landsat Program; First Base Solutions Inc.; Aéro-Photo (1961) Inc.; DigitalGlobe Inc.; U.S. Geological Survey.) web site.
© King's Printer for Ontario, 2023



NOTES Cat 225 245.00/hr inc. fuel

Dec 10/22 Claim # 921237
Cat 225 245.00/hr inc. fuel charge
start 9:00 am travel time 3 1/4 hrs
finish 5:45 pm

Dec 11/22 Cat 225
start 5:30 am
stop 5:30 pm

Dec 12/22 225 Cat
start 5:30 am
stop 2:30 pm sand machine avg
travel 3 1/4 hrs

Dryas, Greenstone NW corner
small quartz veins (no gold)
in veins. Middle argillaceous
stone formation pyrite 19%
no gold. S.F. Jasper rock +
iron formation. No gold sent
machine avg.

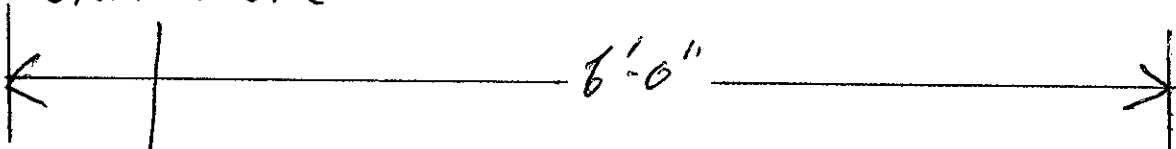
Dec 13/22 Cat 225 245.00/hr
start 9:00 am inc. fuel
stop 5:00 pm travel 3 1/4 hrs

Dec 14/22
start 9:00 am
stop 2:30 pm sand machine
avg travel

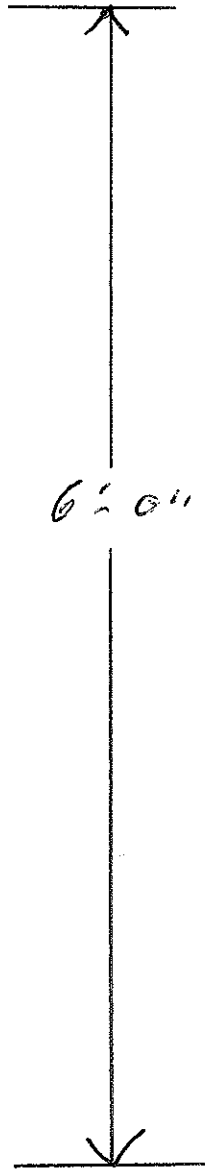
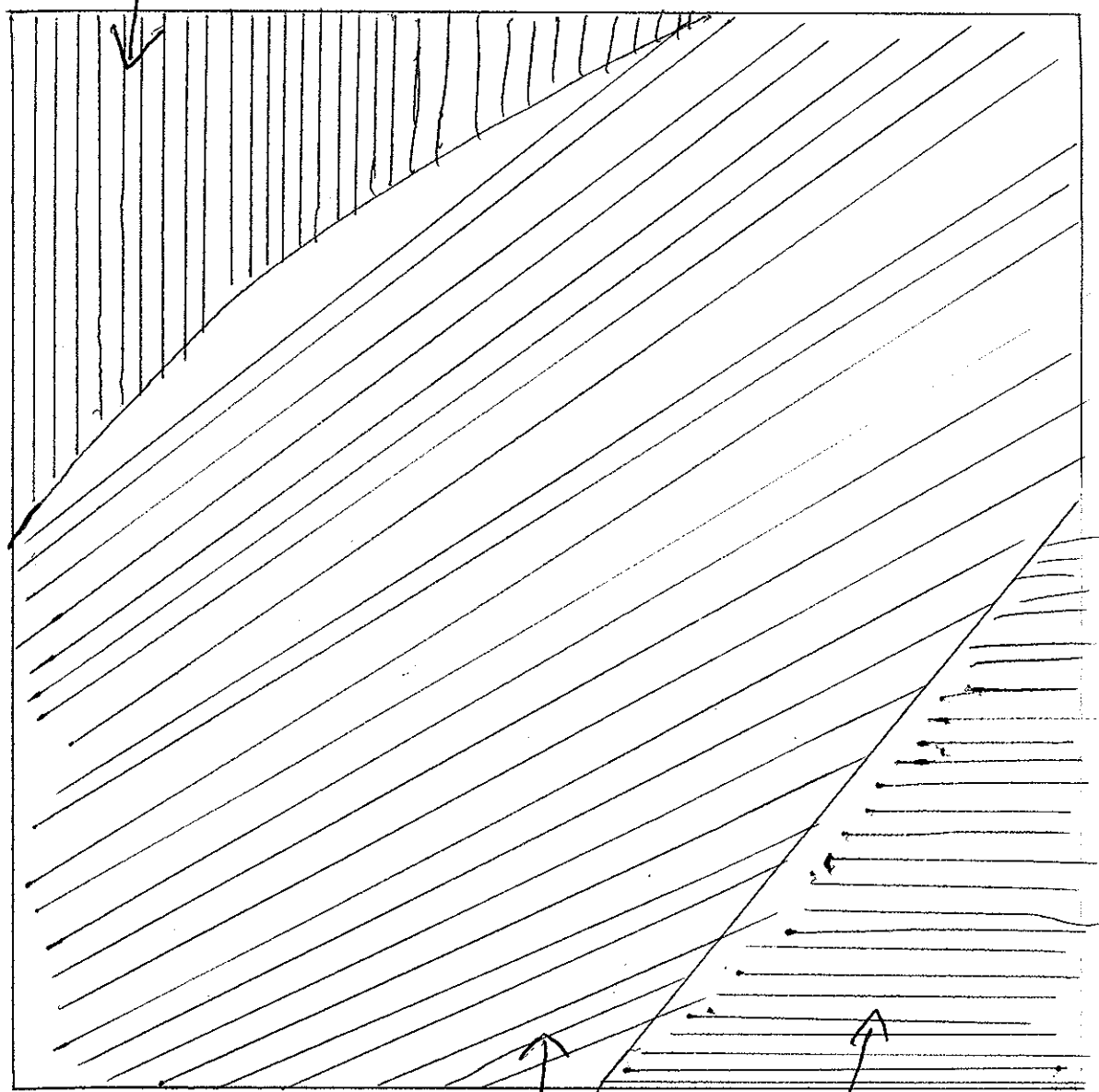
All iron stone formation bits
of chert and pyrite 19% → 29%

SWAYZE
GREENSTONE

SCRAP #2 DETAIL MAP



OVERBURDEN STORAGE AREA



IRON
FORMATION

RED JASPER

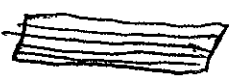
SWAYZE GREENSTONE



IRON FORMATION

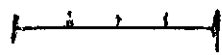


RED JASPER



↑
NORTH

SCALE 1:12

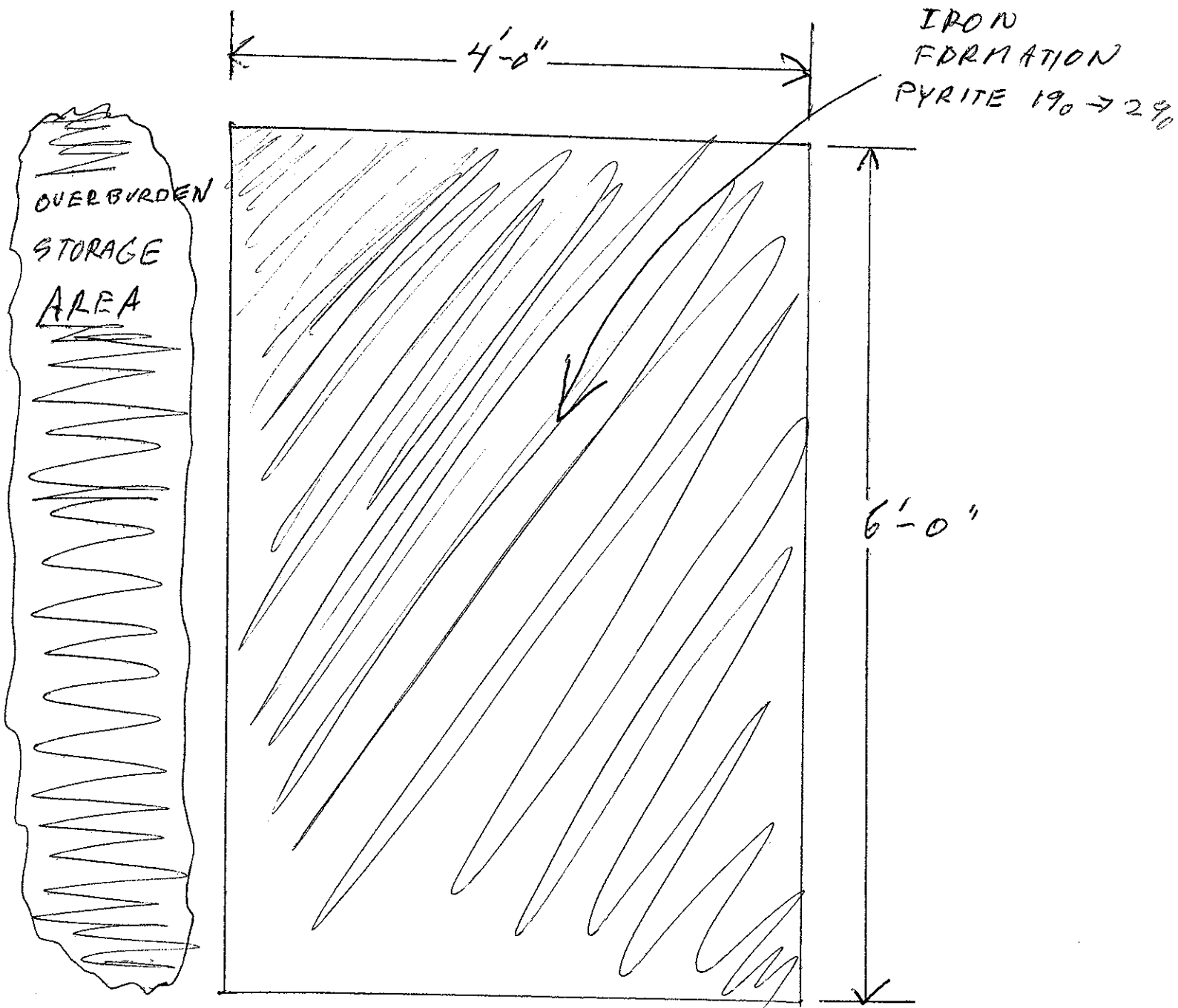


ONE INCH = 1 FOOT / 12 INCHS

SCRAP # 1

DETAIL MAP

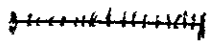
NORTH →



IRON FORMATION



SCALE 1:12



ONE INCH = 1 FOOT / 12 INCHES







Location 17 T 0381667
±3m UTM 5289130





