

We are committed to providing [accessible customer service](#).

If you need accessible formats or communications supports, please [contact us](#).

Nous tenons à améliorer [l'accessibilité des services à la clientèle](#).

Si vous avez besoin de formats accessibles ou d'aide à la communication, veuillez [nous contacter](#).



Abstract

Canadian Exploration Services Limited (CXS) performed a grassroots prospecting program for Ashley Gold Mines Limited over the Hodgetts Property in the Spring of 2023. The prospecting was designed to locate and obtain a sample from outcrops encountered and attempt to locate and sample the historical Seldore site.

The prospecting successfully located and identified the historic Seldore showing. The 12 samples collected should be assayed, and further prospecting should be performed.

ASHLEY GOLD MINES LIMITED
Q3145 – Hodgetts Property
Grass Roots Prospecting Program

C Jason Ploeger, P.Geol.
Kajal P. Makwana

May 29, 2023

TABLE OF CONTENTS

1.	SURVEY DETAILS	10
1.1	PROJECT NAME	10
1.2	CLIENT	10
1.3	SUMMARY	10
1.4	LOCATION	10
1.5	ACCESS	11
1.6	OWNERSHIP	11
1.7	GENERAL GEOLOGY	12
1.8	PROPERTY HISTORY	12
2.	PROSPECTING.....	14
2.1	OVERVIEW	14
2.2	PLANS & PERMITS	14
2.3	DAILY LOG	15
2.4	PERSONNEL	15
2.5	TRAVERSE SPECIFICATIONS	15
3.	RESULTS	17
3.1	SUMMARY OF SAMPLES COLLECTED	17
3.2	DAY 1 – 25 MAY 2023	18
3.3	DAY 2 – 26 MAY 2023	20
3.4	DAY 3 – 27 MAY 2023	34
3.5	RECOMMENDATIONS	34
3.6	CONCLUSIONS.....	35

LIST OF APPENDICES

APPENDIX A	STATEMENT OF QUALIFICATIONS
APPENDIX B	INSTRUMENT SPECIFICATIONS
APPENDIX C	REFERENCES
APPENDIX D	LIST OF MAPS (IN MAP POCKET)

LIST OF TABLES AND FIGURES

Figure 1: Location of the Hodgetts Property	11
Figure 2: Areas Prospected	14
Figure 3: Area Outlined on Google Earth for the Crew	16
Figure 4: Traverse conducted on May 25, 2023	18
Figure 5: Cross Section of Sample 0270	19
Figure 6: Traverse conducted on May 26, 2023	20

Figure 7: Blast Pit Located	20
Figure 8: Muck Pile Located	21
Figure 9: Trench Located	21
Figure 10: Cross Section of Sample 0133	23
Figure 11: Cross Section of Sample 0134	24
Figure 12: Cross Section of Sample 0135	25
Figure 13: Cross Section of Sample 0136	26
Figure 14: Cross Section of Sample 0137	27
Figure 15: Cross Section of Sample 0138	28
Figure 16: Cross Section of Sample 0139	29
Figure 17: Cross Section of Sample 0140	30
Figure 18: Cross Section of Sample 0141	31
Figure 19: Cross Section of Sample 0271	32
Figure 20: Cross Section of Sample 0272	33
Figure 4: Traverse conducted on May 27, 2023	34
Table 1: List of Cell Claims	12
Table 2: Daily Prospecting Log	15
Table 3: Summary of Samples Collected	17

1. SURVEY DETAILS

1.1 PROJECT NAME

This project is known as the **Hodgetts Property**.

1.2 CLIENT

Ashley Gold Mines Limited

14579 Government Rd.
Larder Lake, Ontario
P0K1L0

1.3 SUMMARY

Canadian Exploration Services Limited (CXS) performed a grassroots prospecting program for Ashley Gold Mines Limited over the Hodgetts Property in the Spring of 2023. The prospecting was designed to locate and obtain a sample from outcrops encountered and attempt to locate and sample the historical Seldore site.

The prospecting successfully located and identified the historic Seldore showing. The 12 samples collected should be assayed, and further prospecting should be performed.

All coordinates presented in this report are in UTM NAD83 Zone 17N.

1.4 LOCATION

The Hodgetts Property is approximately 33km south of Shining Tree, Ontario. The survey on the property covers a portion of mining 551339, 551337, 551346, 551347, 551336, 551345, 551348, 551349, 551344, 551341, 551338, 551343, 551352, 551354, 551351, 551350 and 551355 located in Hodgetts Townships within the Sudbury Mining Division.

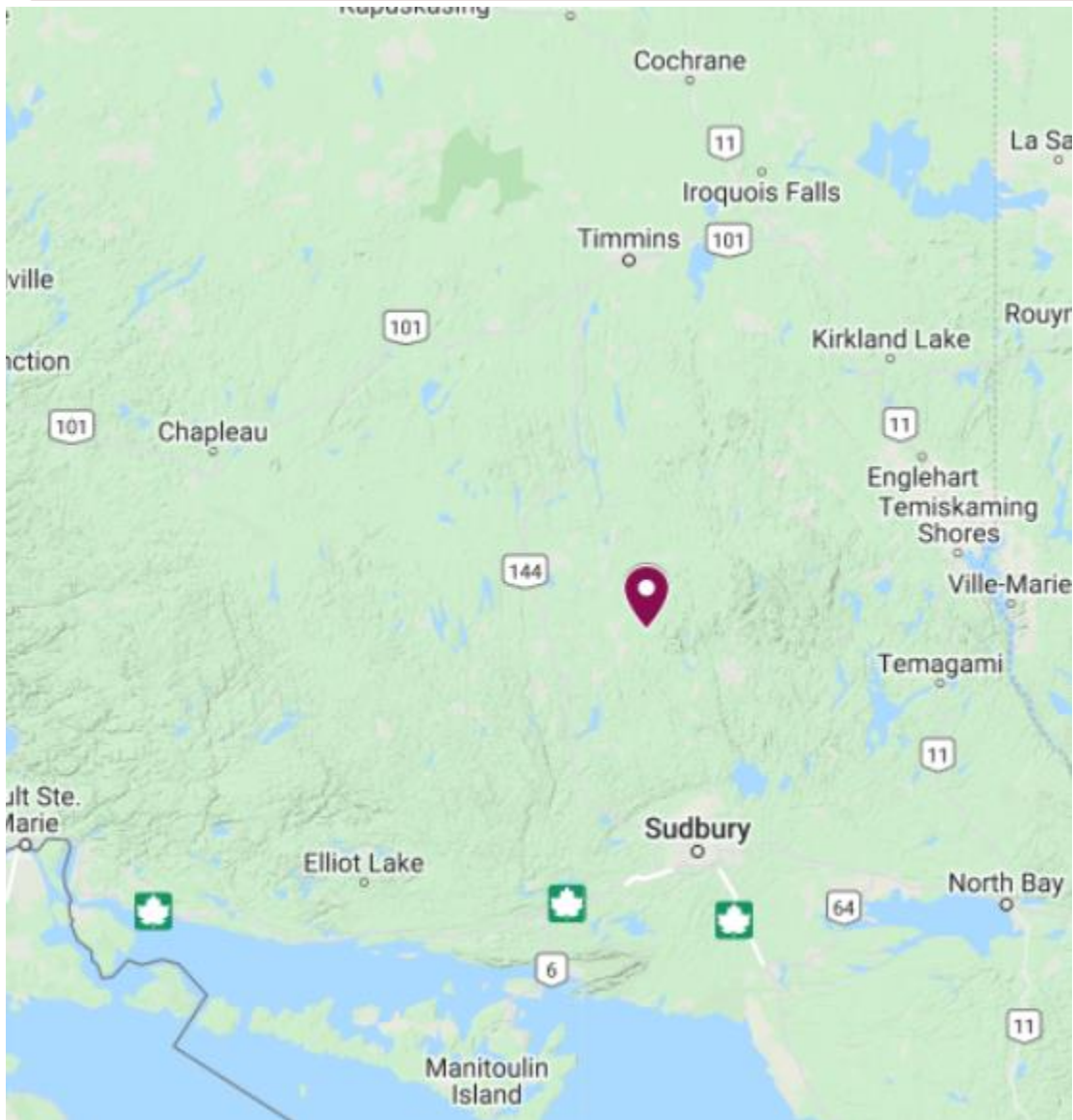


Figure 1: Location of the Hodgetts Property

1.5 ACCESS

Access to the property was attained with a 4x4 truck via Highway 560, approximately 19 km west of Shining Tree, Ontario. At this point, the Meteor Lake Road was travelled south for 31 kilometres to a fork where Lampman Road was travelled for an additional 10.5km. At this point, access was obtained through a new clearcut.

1.6 OWNERSHIP

The survey area covers a portion of mining claims 551339, 551337, 551346, 551347, 551336, 551345, 551348, 551349, 551344, 551341, 551338, 551343,

551352, 551354, 551351, 551350 and 551355 all located in Hodgetts Townships, within the Sudbury Mining Division.

Cell Number	Provincial Grid Cell ID	Ownership of Land	Township
551339	41P06B324	Ashley Gold Mines Limited	Hodgetts
551337	41P06B325	Ashley Gold Mines Limited	Hodgetts
551346	41P06C360	Ashley Gold Mines Limited	Hodgetts
551347	41P06B341	Ashley Gold Mines Limited	Hodgetts
551336	41P06B342	Ashley Gold Mines Limited	Hodgetts
551345	41P06B343	Ashley Gold Mines Limited	Hodgetts
551348	41P06C380	Ashley Gold Mines Limited	Hodgetts
551349	41P06B361	Ashley Gold Mines Limited	Hodgetts
551344	41P06B362	Ashley Gold Mines Limited	Hodgetts
551341	41P06B363	Ashley Gold Mines Limited	Hodgetts
551338	41P06B364	Ashley Gold Mines Limited	Hodgetts
551343	41P06B365	Ashley Gold Mines Limited	Hodgetts
551352	41P06C400	Ashley Gold Mines Limited	Hodgetts
551354	41P06B381	Ashley Gold Mines Limited	Hodgetts
551351	41P03K020	Ashley Gold Mines Limited	Hodgetts
551350	41P03J001	Ashley Gold Mines Limited	Hodgetts
551355	41P03J002	Ashley Gold Mines Limited	Hodgetts

Table 1: List of Cell Claims

1.7 GENERAL GEOLOGY

The underlying geology is a foliated felsic intrusive. This has been covered with a sequence of Huronian Supergroup. These packages have been intruded with a Nipissing Diabase—the final intrusive results in mineralized vein structures.

1.8 PROPERTY HISTORY

Some historical exploration projects have been carried out throughout the survey area. The following list describes details of the previous geoscience work, which was collected by the Mines and Minerals division and provided by OGSEarth (MNMD & OGSEarth, 2023).

-
- **1956-1960: Minada Exploration Limited (File 41P06SE0027, 41P06SE8516)**
Geological and Ground Geophysics
Between 1956 and 1960, Minada mapped the geology and performed a magnetometer and EM survey.
 - **1969: AGN Syndicate (File 41P06SE0026)**
Ground Geophysics
In 1969 AGN reported performing a magnetometer and EM survey.
 - **1977: Card Lake Copper Mines Limited (File 41P06SE0025)**
Diamond Drilling
In 1977 Card Lake reported drilling three holes totalling 1022 feet.
 - **1978: Rio Tinto (File 41P06SE0024)**
Geological and Ground Geophysics
1978 Rio Tinto reported mapping the geology and performing magnetometer and IP surveys.
 - **1983-1984: Goldmac Exploration Inc. (Files 41P06SE0023, 41P06SE0622)**
Geochemical, Geological and Ground Geophysics
In 1983 and 1984, Goldmac reported mapping the geology and performing a magnetometer and VLF EM survey.

2. PROSPECTING

2.1 OVERVIEW

In May of 2023, prospecting was completed over the Hodgetts Property to investigate historic features such as shafts, pits, trenches, and stripped areas, along with any outcrops and mineralization encountered.

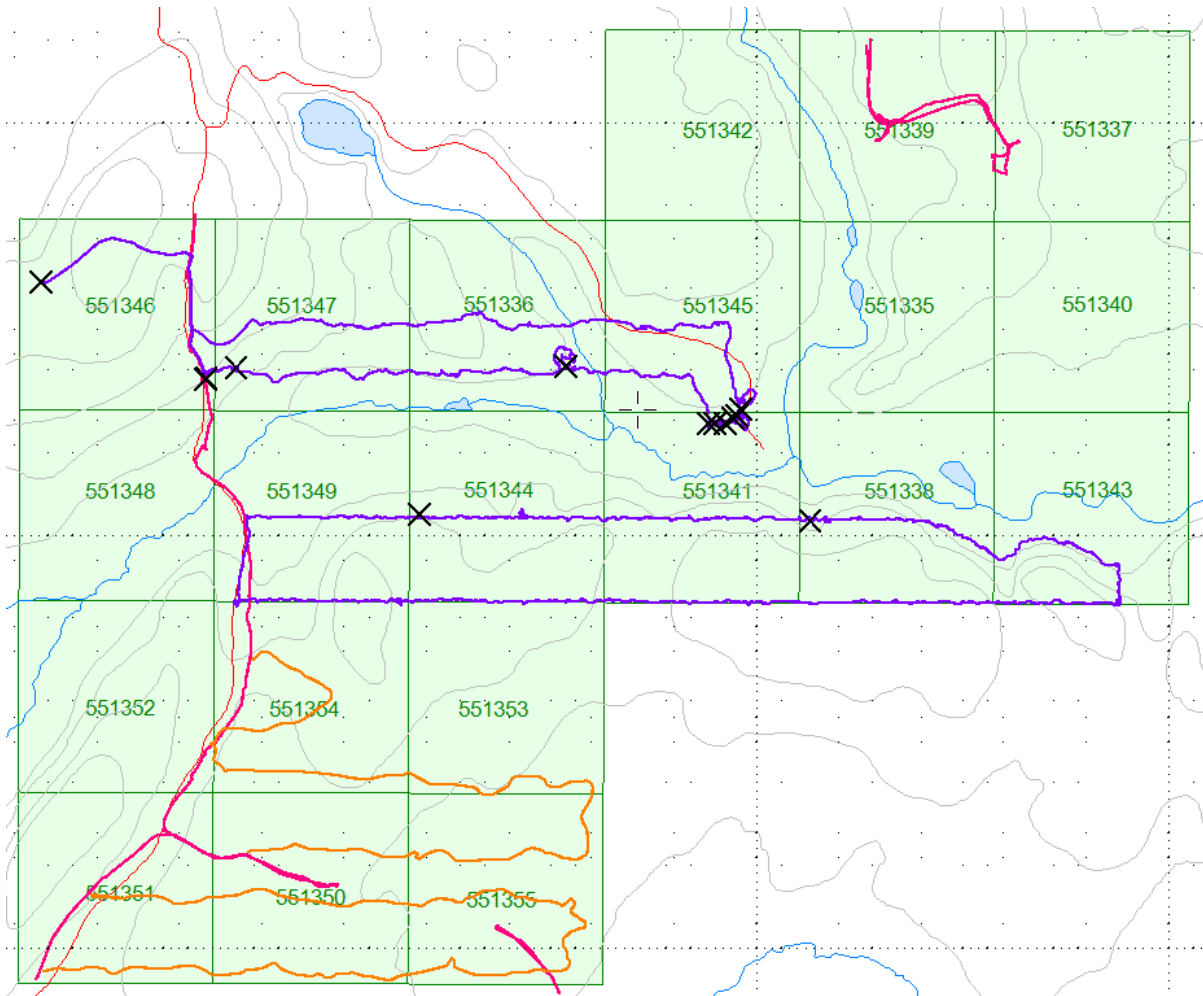


Figure 2: Areas Prospected

2.2 PLANS & PERMITS

The prospecting work reported here was surficial and required no plans or permits.

2.3 DAILY LOG

Date	Description
May 25, 2023	Locate the prospecting area. Work on access and begin traverses.
May 26, 2023	Continue prospecting, targeting main historic showing.
May 27, 2023	Complete the prospecting traverses and demobilize.

Table 2: Daily Prospecting Log

2.4 PERSONNEL

Bruce Lavalley of Dobie and Claudia Moraga of Dobie, Ontario, represented the prospecting crew.

2.5 TRAVERSE SPECIFICATIONS

The property boundary, specific target areas, and any traverse corridors were identified and uploaded to a GPS. This boundary acted as a constraint for the prospecting traverses.

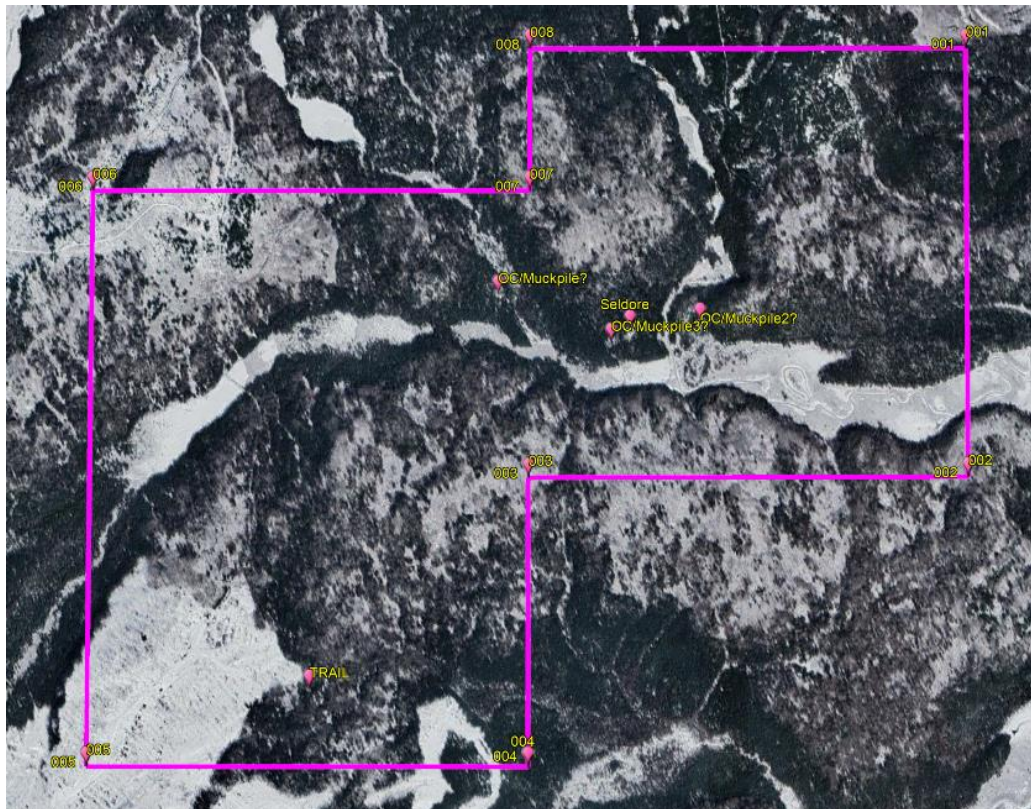


Figure 3: Area Outlined on Google Earth for the Crew

A long bright orange ribbon was hung at each sample site with only the sample number listed with a black marker. Below the ribbon, the sample was taken. Using a rock hammer, rock was broken up and sampled. The sample was placed in a plastic sampling bag with a sample tag and taped closed. The sample number was recorded on the sampling bag as well. The sample is then put into a packsack for transportation.

While sampling, a picture of the satellite information on the GPS at that sample's specific location is taken.

The samples are put into white "rice" bags. These bags are sealed and kept by the crew each day. The GPSs were also downloaded, which identified sample locations and traverse routes.

3. RESULTS

ALL SAMPLES WERE TAKEN FOR REFERENCE PURPOSES ONLY. ALL SAMPLES WERE PRESENTED TO ASHLEY GOLD MINES LIMITED.

3.1 SUMMARY OF SAMPLES COLLECTED

Rock Samples Collected	
Date	Sample Number
May 25, 2023	0270
May 26, 2023	0133 - 0141
	0271 - 0272
May 27, 2023	No samples

Table 3: Summary of Samples Collected

The historic AMIS site (05205), identified as the Seldor Showing, was located. It was found to consist of a series of trenches and blast sites.

The trenches were located at UTM coordinates:

- 1) 482327E 5233873N
- 2) 482366E 5233893N
- 3) 482360E 5233880N
- 4) 482348E 5233880N

3.2 DAY 1 – 25 MAY 2023

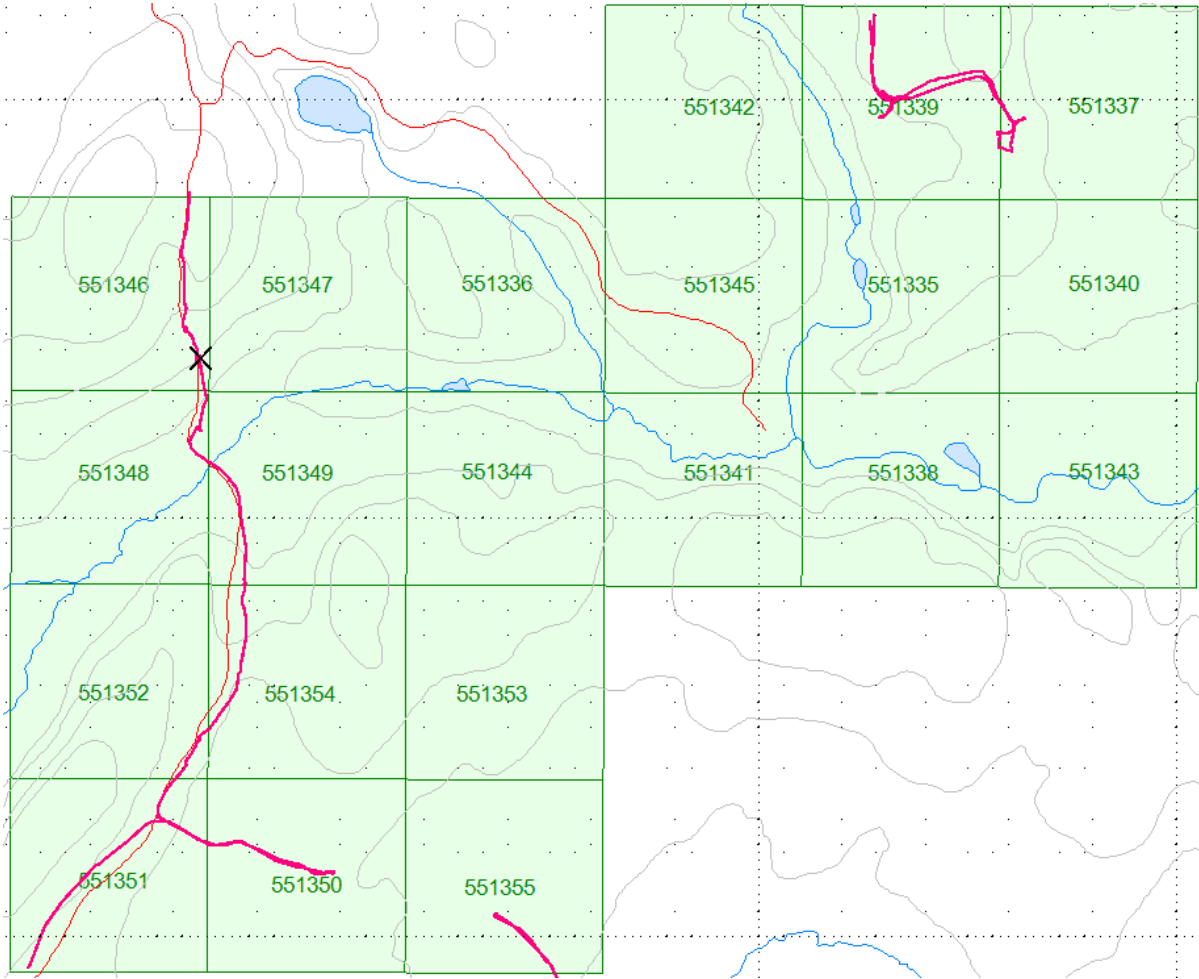


Figure 4: Traverse conducted on May 25, 2023

Sample 0270

Rock Description:

- Tillite

Location:

481063E

5233979N



Figure 5: Cross Section of Sample 0270



Figure 8: Muck Pile Located



Figure 9: Trench Located

The historic AMIS site (05205), identified as the Seldor Showing, was located. It was found to consist of a series of trenches and blast sites.

The trenches were located at UTM coordinates:

- 5) 482327E 5233873N
- 6) 482366E 5233893N
- 7) 482360E 5233880N
- 8) 482348E 5233880N

Sample 0133

Rock Description:

- Volcanic

Location:
480664E
5234215N



Figure 10: Cross Section of Sample 0133

Sample 0134

Rock Description:

- sandstone

Location:
481136E
5234006N



Figure 11: Cross Section of Sample 0134

Sample 0135

Rock Description:

- Argillite/quartzite with hematite alteration
- magnetic

Location:
481937E
5234009N

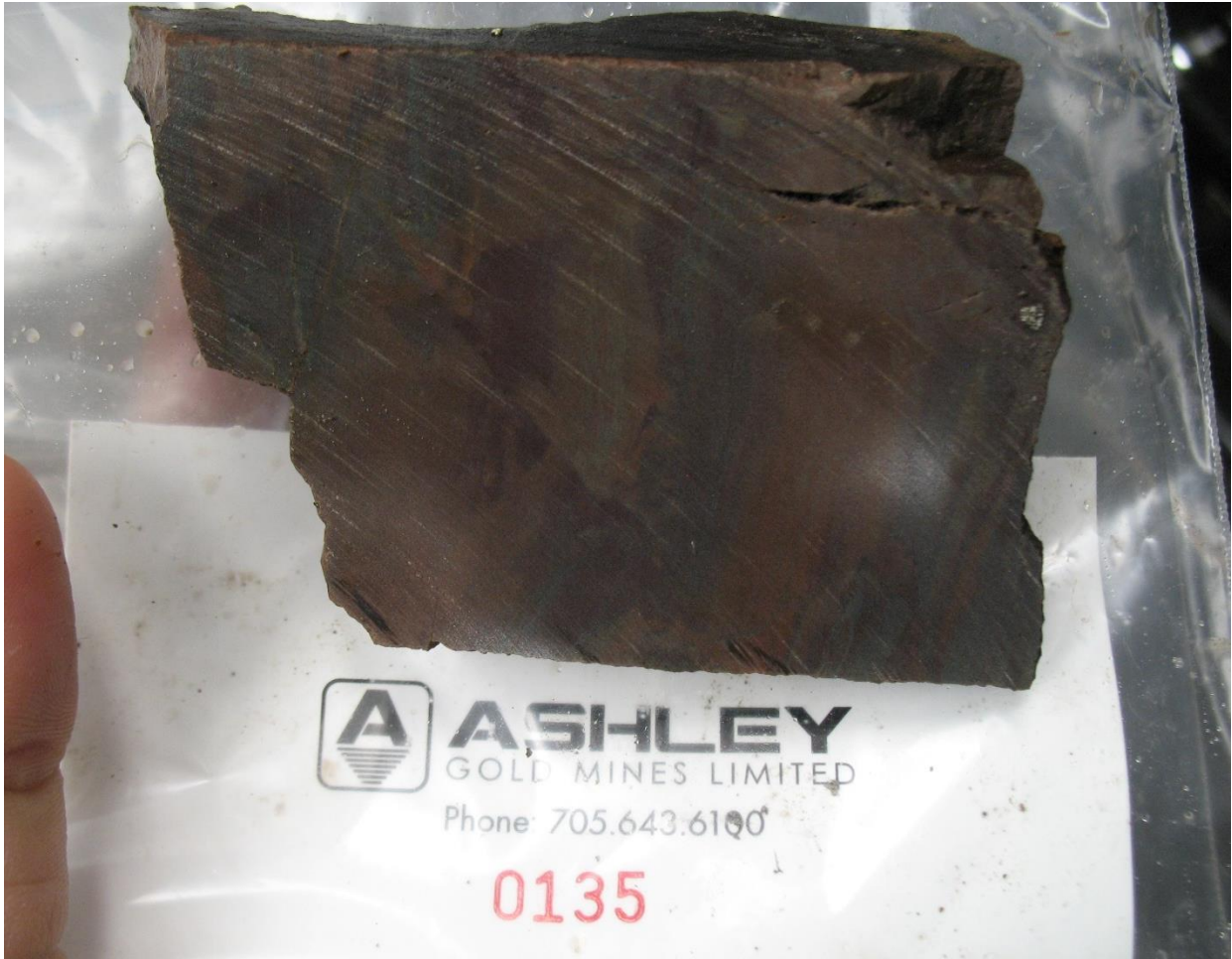


Figure 12: Cross Section of Sample 0135

Sample 0136

Rock Description:

- Quartz
- Minor disseminated pyrite

Location:

482283E

5233871N



Figure 13: Cross Section of Sample 0136

Sample 0137

Rock Description:

- Quartz flooded argillite

Location:
482299E
5233872N



Figure 14: Cross Section of Sample 0137

Sample 0138

Rock Description:

- Fine grained greenish grey slate with quartz veining and pyrite

Location:
482324E
5233873N



Figure 15: Cross Section of Sample 0138

Sample 0139

Rock Description:

- Slate with Quartz vein and blebs of pyrite

Location:
482341E
5233884N



Figure 16: Cross Section of Sample 0139

Sample 0140

Rock Description:

- Slate with Quartz
- Fine grain pyrite throughout

Location:
482351E
5233892N



Figure 17: Cross Section of Sample 0140

Sample 0141

Rock Description:

- Quartz
- Disseminated pyrite

Location:
482360E
5233907N



Figure 18: Cross Section of Sample 0141

Sample 0271

Rock Description:

- Arkose Sandstone

Location:
481580E
5233653N



Figure 19: Cross Section of Sample 0271

Sample 0272

Rock Description:

- Slate
- Attracts magnet

Location:
482529E
5233636N



Figure 20: Cross Section of Sample 0272

3.6 CONCLUSIONS

The prospecting successfully located and identified the historic Seldor showing. The samples collected should be assayed, and further prospecting should be performed.

APPENDIX A

STATEMENT OF QUALIFICATIONS

I, C. Jason Ploeger, at this moment, declare that:

1. I am a professional geophysicist with residence in Larder Lake, Ontario and am presently employed as a Geophysicist and Geophysical Manager of Canadian Exploration Services Ltd. of Larder Lake, Ontario.
2. I am a Practising Member of the Association of Professional Geoscientists, with membership number 2172.
3. I graduated with a Bachelor of Science in geophysics from the University of Western Ontario in London, Ontario 1999.
4. I have practiced my profession continuously since graduation in Africa, Bulgaria, Canada, Mexico and Mongolia.
5. I am a member of the Ontario Prospectors Association, a Director of the Northern Prospectors Association and a member of the Society of Exploration Geophysicists.
6. I do have an interest in the properties and securities of **Ashley Gold Mines Limited**.
7. I am responsible for the final processing and validation of the results and the compilation of the presentation of this report. The statements in this report represent my professional opinion based on my consideration of the information available when writing this report.



C. Jason Ploeger, P.Geo., B.Sc.
Geophysical Manager
Canadian Exploration Services Ltd.

Larder Lake, ON
May 29, 2023

STATEMENT OF QUALIFICATIONS

I, Kajal P. Makwana, at this moment, declare that:

1. I am a Junior Geologist/Exploration Geologist residing in Virginiatown, Ontario and employed with Canadian Exploration Services Ltd. of Larder Lake, Ontario.
2. I graduated with a Bachelor of Science in Geology from The Maharaja Sayajirao University of Baroda, Gujarat, India 2017.
3. I have previous geological work experience with Battery Mineral Resources, 2021-2022.
4. I do not have nor expect interest in the properties and securities of **Ashley Gold Mines Limited**.
5. I am responsible for processing the results and the compilation of the presentation of this report. The statements in this report represent my professional opinion based on considering the information available when writing this report.

Kajal P. Makwana, B.Sc.
Junior Geologist/Exploration Geologist
Canadian Exploration Services Ltd.

Larder Lake, ON
May 29, 2023

APPENDIX B

GARMIN GPS MAP 62S



Physical & Performance:	
Unit dimensions, WxHxD:	2.4" x 6.3" x 1.4" (6.1 x 16.0 x 3.6 cm)
Display size, WxH:	1.43" x 2.15" (3.6 x 5.5 cm); 2.6" diag (6.6 cm)
Display resolution, WxH:	160 x 240 pixels
Display type:	transflective, 65-K colour TFT
Weight:	9.2 oz (260.1 g) with batteries
Battery:	2 AA batteries (not included); NiMH or Lithium recommended
Battery life:	20 hours
Waterproof:	yes (IPX7)
Floats:	no
High-sensitivity receiver:	yes
Interface:	High-speed USB and NMEA 0183 compatible
Maps & Memory:	
Basemap:	yes
Preloaded maps:	no
Ability to add maps:	yes
Built-in memory:	1.7 GB
Accepts data cards:	microSD™ card (not included)

Waypoints/favourites/locations:	2000
Routes:	200
Track log:	10,000 points, 200 saved tracks
Features & Benefits:	
Automatic routing (turn-by-turn routing on roads):	Yes (with optional mapping for detailed roads)
Electronic compass:	yes (tilt-compensated, 3-axis)
Touchscreen:	no
Barometric altimeter:	yes
Camera:	no
<u>Geocaching-friendly:</u>	yes (paperless)
<u>Custom maps compatible:</u>	yes
Photo navigation (navigate to geotagged photos):	yes
Outdoor GPS games:	no
Hunt/fish calendar:	yes
Sun and moon information:	yes
Tide tables:	yes
Area calculation:	yes
Custom POIs (ability to add additional points of interest):	yes
Unit-to-unit transfer (shares data wirelessly with similar units):	yes
Picture viewer:	yes
Garmin Connect™ compatible (online community where you analyze, categorize and share data):	yes

- *Specifications obtained from www.garmin.com*

- **APPENDIX C**

- **REFERENCES**

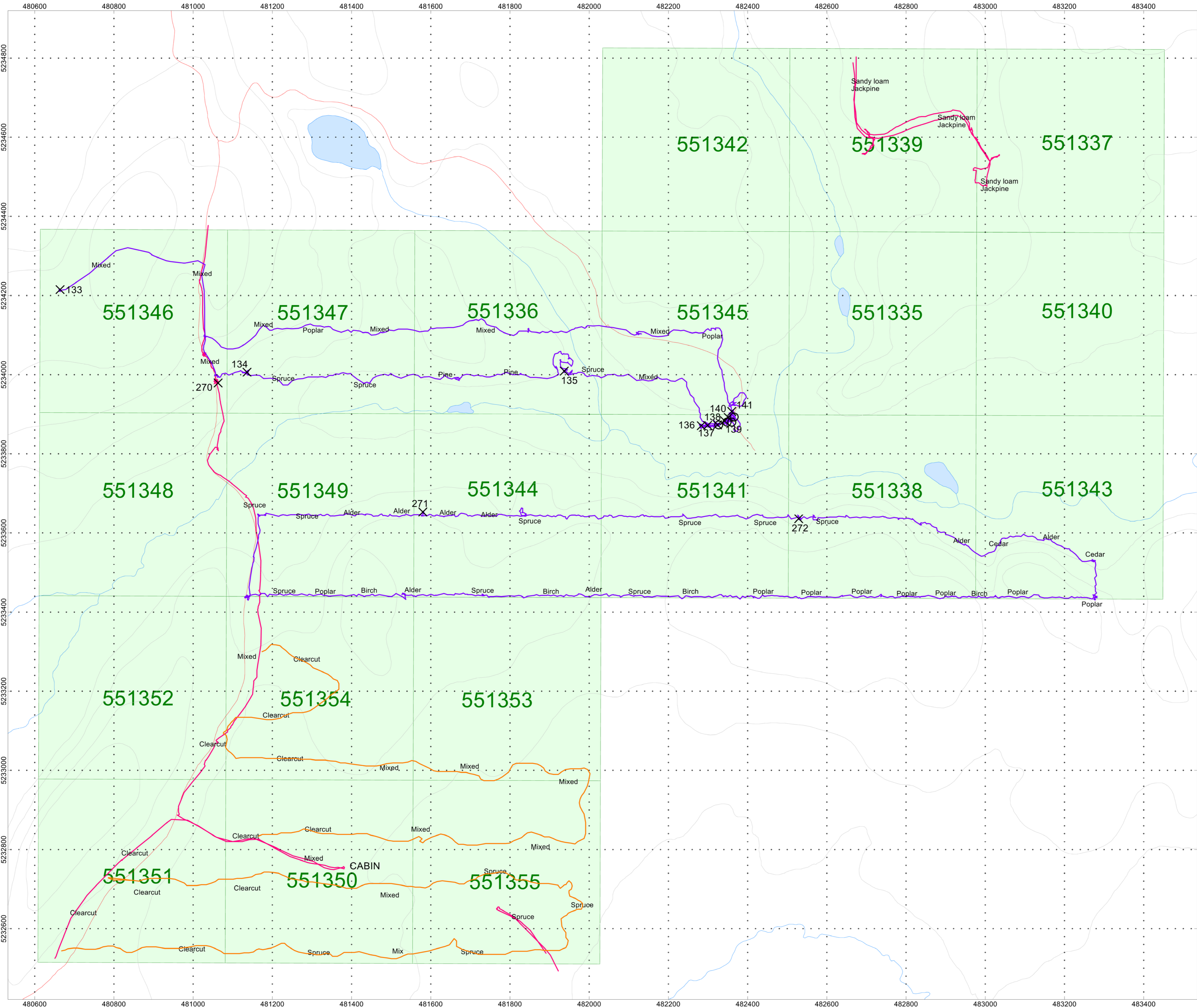
- Google. (2023). *Location of the Hodgetts Property*.
- Maxar Technologies. (2023).
- MNDM & OGSEarth. (2023). *OGSEarth*. Ontario Ministry of Northern Development and Mines.

APPENDIX D

LIST OF MAPS (IN MAP POCKET)

1) *Map-Q3145-AGM-Hodgetts-Prospecting-2023 (1:5000)*

Total Maps = 1



-  May 25, 2023
-  May 26, 2023
-  May 27, 2023



HODGETTS PROPERTY
Hodgetts Township, Ontario

Prospecting Traverses

Traverses By: Claudia Moraga
and Bruce Lavalley
Processed By: C Jason Ploeger, P.Geo.
Map Drawn By: C Jason Ploeger, P.Geo.
May 2023

