

We are committed to providing [accessible customer service](#).

If you need accessible formats or communications supports, please [contact us](#).

Nous tenons à améliorer [l'accessibilité des services à la clientèle](#).

Si vous avez besoin de formats accessibles ou d'aide à la communication, veuillez [nous contacter](#).

**ROOSTER
CANYON
PROPERTY**

DON SKALESKY/KALEN SKALESKY

Sept. 29 – Oct. 1, 2021

TABLE OF CONTENTS

1. Daily Log	3
2. Samples	4
3. Statement of Expenditures	5
4. Maps (see attachments: 6)	
▪ Claims Map	
▪ Location Map	
▪ Access Maps (3)	
▪ Scale Map	
5. Act Lab Invoice/Receipt/Assay Results (see attachments: 3)	
6. Expenditure Receipts (see attachment)	

Daily Log

Sept. 29 – Oct. 1, 2021

The purpose for doing work is that it is required on a couple of claims to keep them in good standing. We also wanted to see if we could locate some new showings on the property that would further garner interest in the property.

Wednesday Sept. 29, 2021 (Day 1)

In June 2011 while Lloyd and I were looking for a post, he mentioned that he had stumbled across some quartz veins which we never did check out. We headed up to the claim (332404) on the Casque Isles hiking trail to try to locate these veins. We headed west on the trail past the east adit of the Northshore Mine and continued on heading north past the west adit. We kept north along the fault and prospected and manually stripped on the east side at the base of the 25m high ridge. After about an hour we crossed over to the west side and prospected along the trail continuing north for about 10 minutes more until we came across the information checkpoint which is approximately 25 minutes past the west adit at this point we decided to head back and continue prospecting across the fault on both sides and hopefully find some veins. We found some meta volcanic floats along the way and checked them out but to no avail. We arrived back at the west adit and climbed the ridge to get onto our claim. We walked about 20m and came across the old trench to the east which measured 50m long x 2m wide x 2m deep. We were able to trench a small area by breaking the rock. We continued prospecting and did more manual stripping that led us to a pit measuring 5m x 4m x 3m and kept prospecting and stripping where we could as we hooked up with our OPAP 97 trail and arrived at the open stope 39m east of the intersection of trail we came off of from the west and the OPAP 97 trail. We did some stripping to the west end of the stope. We came across the quartz vein where we had taken a sample from a number of years back. The quartz vein with sulphides was in the host rock volcanic. We called it a day.

Thursday Sept. 30, 2021 (Day 2)

We were waiting for Gerry White (geologist) at the Sunset Motel. We left together for the property. We took him to the west trail off the ATV Backhoe trail to the old trench and pit from there we proceeded to the open stope. Kalen and I

headed west of the stope stripping some overburden and banging rocks while Gerald was prospecting at the stope and taking some notes. We then continued along the trail for 32m east of the sugar quartz vein. We spent a while here prospecting and pounding rocks and some stripping where there was overburden. We continued onto the open cut 96m NE of the sugar quartz vein. We spent the rest of the day in and around the open cut as we had taken a high-grade sample out of here previously. Gerry made his observation and took notes after a long day and we were prospecting in and around the cut. The host rock around this area is felsic to meta volcanics. After he was done, we decided to leave as it was late in the day and we thanked Gerry for the visit and wished him a safe trip back home.

Friday Oct. 1, 2021 (Day 3)

We prospected, stripped and trenched where we could. Our main focus was to concentrate in and around the adit to the east and beyond the adit extension. We ended up taking four samples between 40 and 42m to the northeast of the east shaft. SL #1 is about 8" east of SL #2; SL #2 is about 1' south of SL #3; SL #3 is about 6" south of SL #4. The host rock in the area is hornblend syenite to intermediate felsic volcanics. When we were done bagging our samples, we headed out.

Note: The vegetation varies from mature jack pine and black spruce to moose maple and alder. Swampy conditions are rare and are usually only located around beaver ponds. There are also birch, poplar, spruce and balsam trees on our property as well as the surrounding areas.

Description and Sample Numbers

September 29, 30, and October 1, 2021

S/L #1 – 48.771851 – 87.271660 Dark grey to green fine grained meta-volcanic tuff (andesite). Some quartz porphyry noticed. Partially silicified contains less than 1% very fine disseminated pyrite. Some minor gossan noticed.

S/L #2 – 48.771853 – 87.271682 Dark grey to green meta volcanic host more silicified than S/L #1. Contains vuggy quartz veining 2% disseminated and patches of pyrite.

S/L #3 – 48.771883 – 87.271678 Fine grained intrusive. Possible syenite pink K-feldspar noted. Pyrite noted along fracture face up to 5% (disseminated and patches). Sample is medium to highly siliceous.

S/L #4 – 48.771915 – 87.271671 Same rock, same fine grained syenite as sample S/L #3 siliceous with 5-7% pyrite.

STATEMENT OF EXPENDITURES

DATES	PERSONNEL	TASK	COST	TOTAL
Sept. 29 – Oct. 1, 2021	Don Skalesky (Prospector)	Grassroots prospecting/prospecting, manual stripping & trenching, sampling: 3 days x cost	\$300	\$900
Mar. 29, 2023	Don Skalesky	Report: 1 day x cost	\$300	300
Sept. 29 – Oct. 1, 2021	Kalen Skalesky (Prospector helper)	Grassroots prospecting/prospecting, manual stripping & trenching, sampling: 3 days x cost	\$200	600
Sept. 30, 2021	Gerald White (Geologist)	Grassroots prospecting/prospecting, sampling & geological services 1 day x cost	\$300	300
Aug. 22, 2022		Assays (not including \$18.33 HST)		141.00
DATES		TRANSPORTATION COSTS		
Sept. 29 – Oct. 1, 2021		Thunder Bay to Schreiber return 203 km x 2 = 406 km x \$0.50/km		203.00
Sept. 29 – Oct. 1, 2021		Sunset Motel to 2011 ATV-Backhoe Trail 10 km return = 20 km x \$0.50/km x 3 days		30.00
DATES		FOOD & LODGING COSTS		
Sept. 29 – Oct. 1, 2021		Filane's Restaurant, Schreiber, ON (not including HST \$12.60)		94.18
Sept. 29 – Oct. 1, 2021		Costa's Grocery (not including HST \$3.82)		55.76
Sept. 29 – Oct. 1, 2021		Sunset Motel, Schreiber, ON (no HST) 3 nights accommodation		237.30
TOTAL COST				2,861.24



Report No.: A22-10591
Report Date: 02-Aug-22
Date Submitted: 28-Jul-22
Your Reference:

Don Skalesky
732 Ernestine Ave.
Thunder Bay Ontario P7E-1W8
Canada

ATTN: Don Skalesky

CERTIFICATE OF ANALYSIS

4 Rock samples were submitted for analysis.

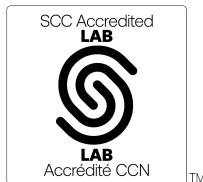
Table with 2 columns: Analytical package(s) requested and Testing Date. Row 1: 1A2-50-Tbay, QOP AA-Au (Au - Fire Assay AA), 2022-08-02 14:25:19

REPORT A22-10591

This report may be reproduced without our consent. If only selected portions of the report are reproduced, permission must be obtained. If no instructions were given at time of sample submittal regarding excess material, it will be discarded within 90 days of this report. Our liability is limited solely to the analytical cost of these analyses. Test results are representative only of material submitted for analysis.

Notes:

If value exceeds upper limit we recommend reassay by fire assay gravimetric-Code 1A3



LabID: 673

ACTIVATION LABORATORIES LTD.
1201 Walsh Street West, Thunder Bay, Ontario, Canada, P7E 4X6
TELEPHONE +807 622-6707 or +1.888.228.5227 FAX +1.905.648.9613
E-MAIL Tbay@actlabs.com ACTLABS GROUP WEBSITE www.actlabs.com

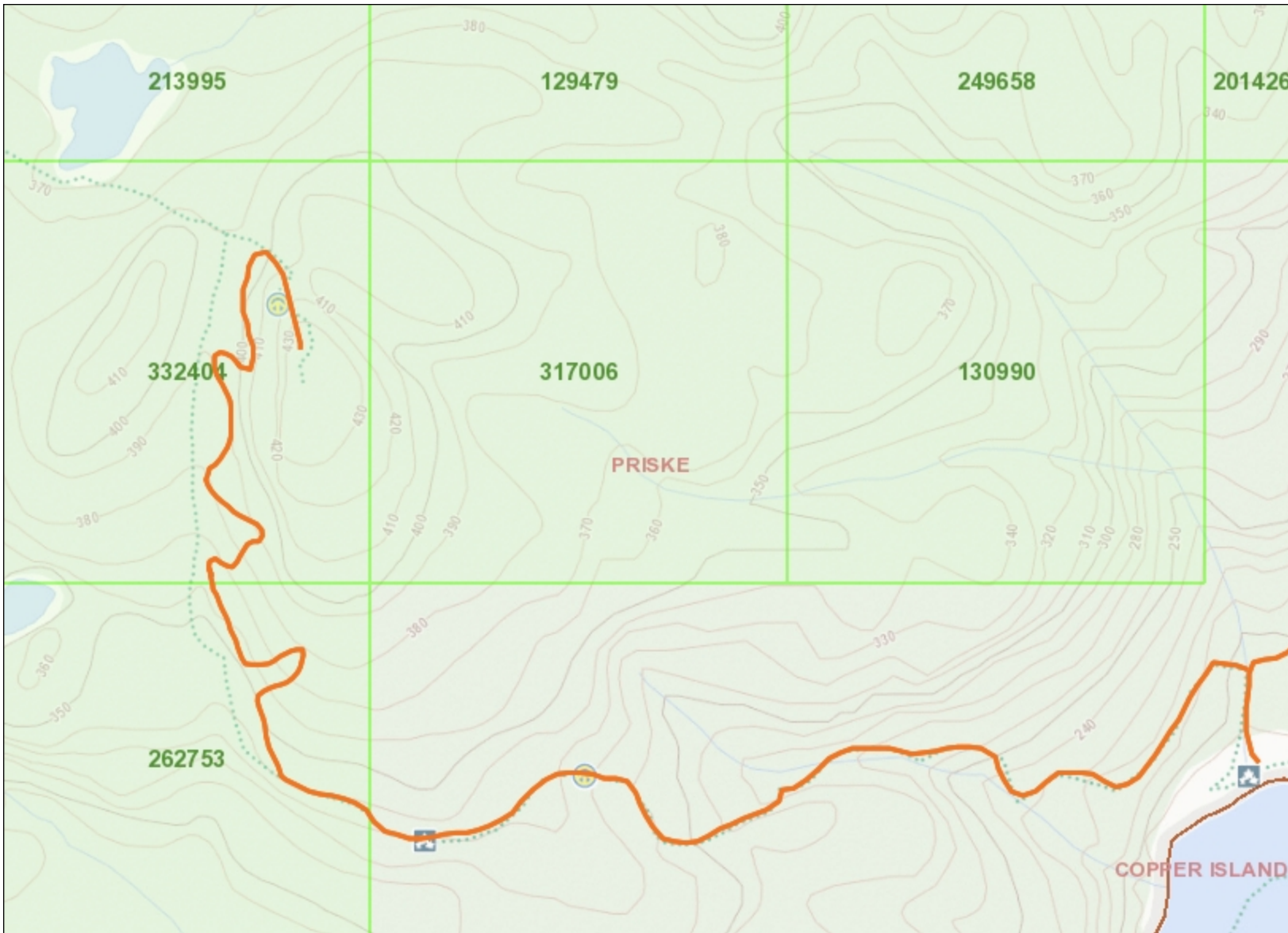
CERTIFIED BY:

Handwritten signature of Emmanuel Eseme

Emmanuel Eseme, Ph.D.
Quality Control Coordinator

Analyte Symbol	Au
Unit Symbol	ppb
Lower Limit	5
Method Code	FA-AA
SL-01	< 5
SL-02	66
SL-03	< 5
SL-04	6

Analyte Symbol	Au
Unit Symbol	ppb
Lower Limit	5
Method Code	FA-AA
OREAS 238 (Fire Assay) Meas	3020
OREAS 238 (Fire Assay) Cert	3030
Oreas E1336 (Fire Assay) Meas	512
Oreas E1336 (Fire Assay) Cert	510.000
SL-03 Orig	< 5
SL-03 Dup	< 5
Method Blank	< 5
Method Blank	< 5



Legend

- Provincial Grid Cell**
 - Available
 - Pending
 - Unavailable
- Mining Claim**
 - Mining Claim
 - Boundary Claim
- Alienation**
 - Withdrawal
 - Notice
- MINES Administrative Boundaries**
 - MINES Townships and Areas
 - Geographic Lot Fabric
 - UTM Grid 1K
 - UTM Grid 10K
 - Mining Division
 - Mineral Exploration and Development Region
 - CLUPA Protected Area - Far North
 - Resident Geologist District
 - Federal Land Other
 - Native Reserves
- AMIS Sites**
 - AMIS Sites
 - AMIS Features
 - Drill Hole
 - Mineral Occurrences
- MLAS Mining History**
 - Withdrawal - History
 - Notice - History
 - Mining Claim - History
 - Mining Land Tenure - History
 - Legacy Claim
- Provincial Grid**
 - Provincial Grid 250K
 - Provincial Grid 50K
 - Provincial Grid Group
- Land Tenure**
 - Surface Rights
 - Mining Rights
 - Mining and Surface Rights
 - Order-in-Council

Those wishing to register mining claims should consult with the Provincial Mining Recorders' Office of the Ministry of Mines (MINES) for additional information on the status of the lands shown hereon. This map is not intended for navigational, survey, or land title determination purposes as the information shown on this map is compiled from various sources. Completeness and accuracy are not guaranteed. Additional information may also be obtained through the local Land Titles or Registry Office, or the Ministry of Natural Resources and Forestry. The information shown is derived from digital data available in the Provincial Mining Recorders' Office at the time of downloading from the Ministry of Mines (MINES) web site.

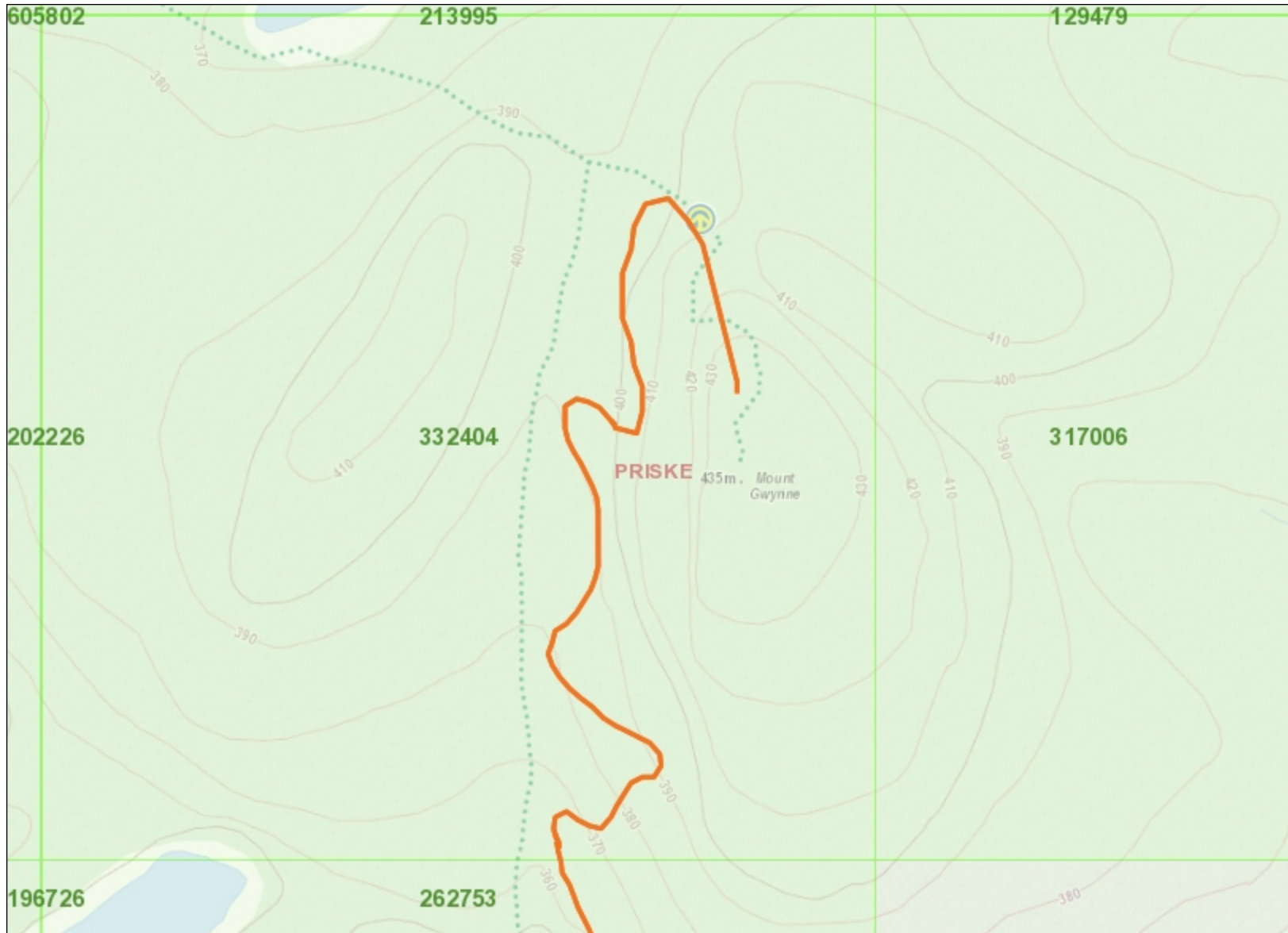
0 0.33 km

Projection: Web Mercator

Imagery Copyright Notices: Ministry of Natural Resources and Forestry (MNR); NASA Landsat Program; First Base Solutions Inc.; Aéro-Photo (1961) Inc.; DigitalGlobe Inc.; U.S. Geological Survey.) web site.

© King's Printer for Ontario, 2023





Legend

- Provincial Grid Cell**
 - Available
 - Pending
 - Unavailable
- Mining Claim**
 - Mining Claim
 - Boundary Claim
- Alienation**
 - Withdrawal
 - Notice
- MINES Administrative Boundaries**
 - MINES Townships and Areas
 - Geographic Lot Fabric
 - UTM Grid 1K
 - UTM Grid 10K
 - Mining Division
 - Mineral Exploration and Development Region
 - CLUPA Protected Area - Far North
 - Resident Geologist District
 - Federal Land Other
 - Native Reserves
- AMIS Sites**
 - AMIS Sites
 - AMIS Features
 - Drill Hole
 - Mineral Occurrences
- MLAS Mining History**
 - Withdrawal - History
 - Notice - History
 - Mining Claim - History
 - Mining Land Tenure - History
 - Legacy Claim
- Provincial Grid**
 - Provincial Grid 250K
 - Provincial Grid 50K
 - Provincial Grid Group
- Land Tenure**
 - Surface Rights
 - Mining Rights
 - Mining and Surface Rights
 - Order-in-Council

Those wishing to register mining claims should consult with the Provincial Mining Recorders' Office of the Ministry of Mines (MINES) for additional information on the status of the lands shown hereon. This map is not intended for navigational, survey, or land title determination purposes as the information shown on this map is compiled from various sources. Completeness and accuracy are not guaranteed. Additional information may also be obtained through the local Land Titles or Registry Office, or the Ministry of Natural Resources and Forestry. The information shown is derived from digital data available in the Provincial Mining Recorders' Office at the time of downloading from the Ministry of Mines (MINES) web site.

0 0.17 km

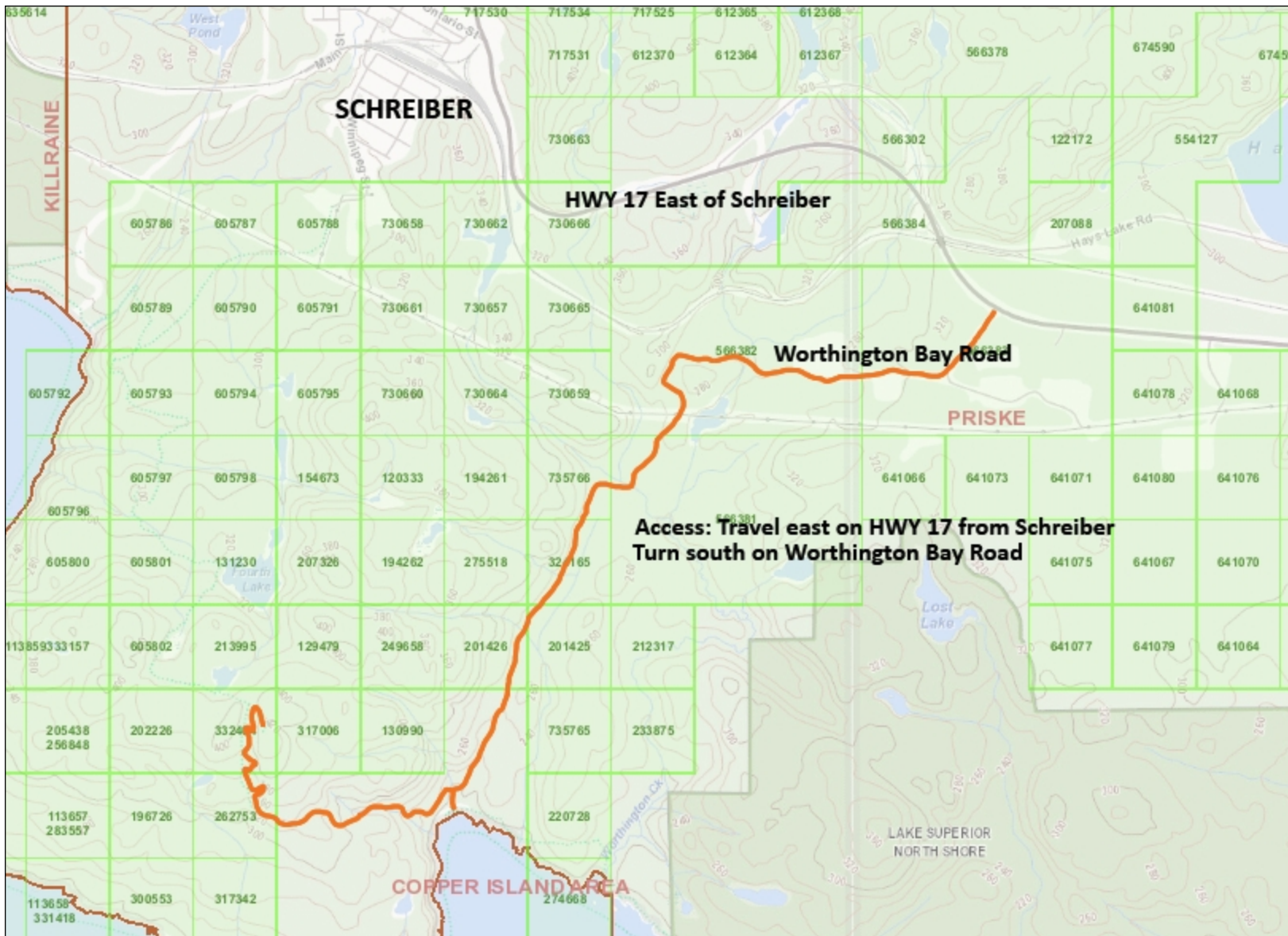
Projection: Web Mercator



Imagery Copyright Notices: Ministry of Natural Resources and Forestry (MNR); NASA Landsat Program; First Base Solutions Inc.; Aéro-Photo (1961) Inc.; DigitalGlobe Inc.; U.S. Geological Survey.) web site.

© King's Printer for Ontario, 2023





Legend

- Provincial Grid Cell**
 - Available
 - Pending
 - Unavailable
- Mining Claim**
 - Mining Claim
 - Boundary Claim
- Allienation**
 - Withdrawal
 - Notice
- MINES Administrative Boundaries**
 - MINES Townships and Areas
 - Geographic Lot Fabric
 - UTM Grid 1K
 - UTM Grid 10K
 - Mining Division
 - Mineral Exploration and Development Region
 - CLUPA Protected Area - Far North
 - Resident Geologist District
 - Federal Land Other
 - Native Reserves
- AMIS Sites**
 - AMIS Sites
 - AMIS Features
 - Drill Hole
 - Mineral Occurrences
- MLAS Mining History**
 - Withdrawal - History
 - Notice - History
 - Mining Claim - History
 - Mining Land Tenure - History
 - Legacy Claim
- Provincial Grid**
 - Provincial Grid 250K
 - Provincial Grid 50K
 - Provincial Grid Group
- Land Tenure**
 - Surface Rights
 - Mining Rights
 - Mining and Surface Rights
 - Order-in-Council

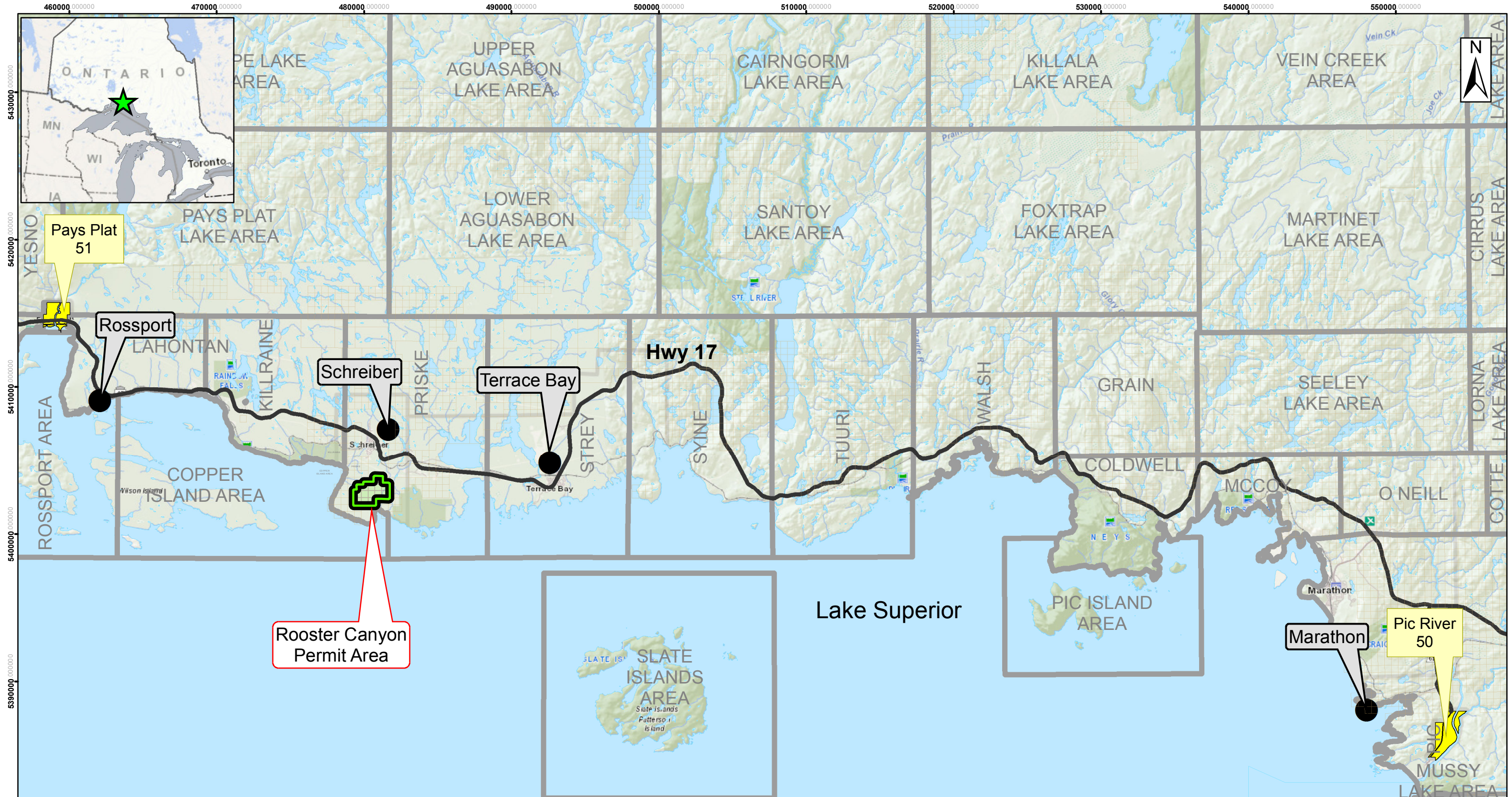
Those wishing to register mining claims should consult with the Provincial Mining Recorders' Office of the Ministry of Mines (MINES) for additional information on the status of the lands shown hereon. This map is not intended for navigational, survey, or land title determination purposes as the information shown on this map is compiled from various sources. Completeness and accuracy are not guaranteed. Additional information may also be obtained through the local Land Titles or Registry Office, or the Ministry of Natural Resources and Forestry. The information shown is derived from digital data available in the Provincial Mining Recorders' Office at the time of downloading from the Ministry of Mines (MINES) web site.



Imagery Copyright Notices: Ministry of Natural Resources and Forestry (MNR); NASA Landsat Program; First Base Solutions Inc.; Aéro-Photo (1961) Inc.; DigitalGlobe Inc.; U.S. Geological Survey.) web site.
© King's Printer for Ontario, 2023



Rooster Canyon Project: Regional Map



Legend

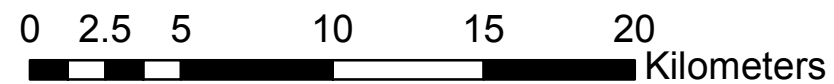
- Rooster Canyon Permit Border
- Rooster Canyon Permit Claims
- Operational Cell Claims
- MENDM Townships and Lake
- First Nations Communities
- Settlements
- Roads
- Waterbodies

Reference data from Land Information Ontario and Ministry of Energy Northern Development and Mines.

Projection:
NAD83 UTM Zone 16N

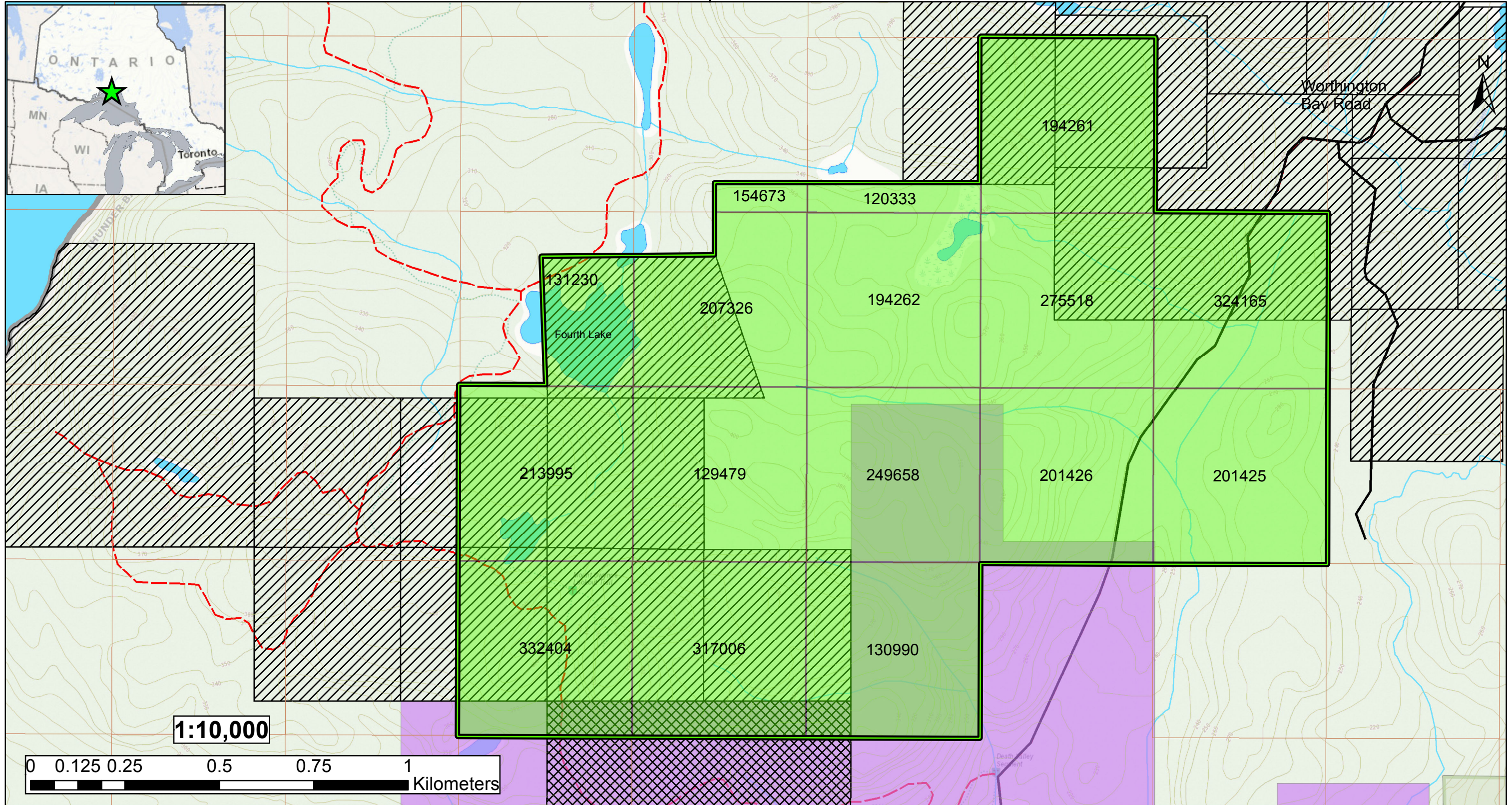
Map by 29homson Environmental
June 25, 2021

1:250,000



Rooster Canyon Property: Project Map

480000 000000



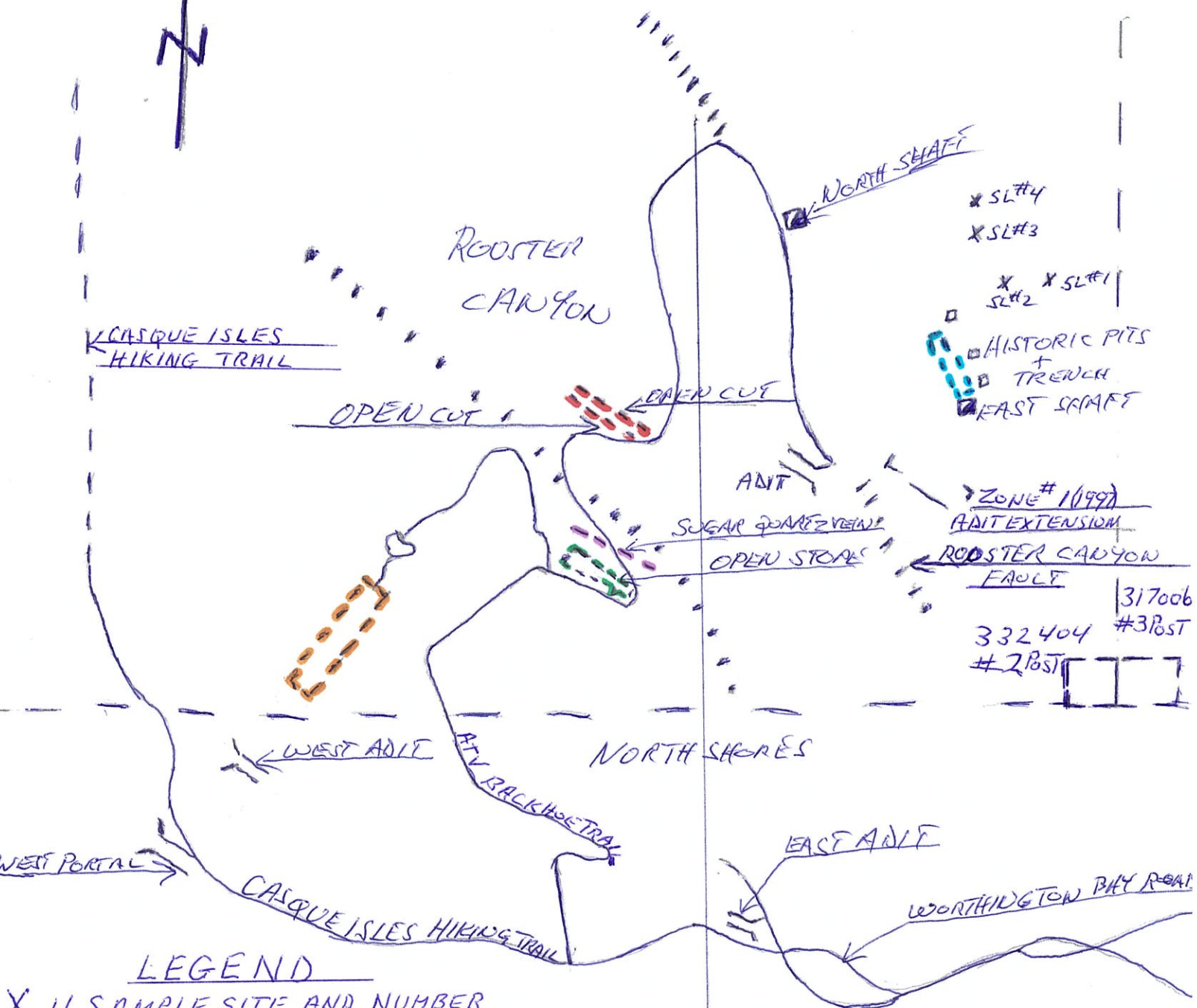
Legend

- | | | | |
|------------------------------|------------------------|---------------------------|---------------------------------|
| Rooster Canyon Permit Border | Non Mining Land Tenure | First Nations Communities | MENDM_Administrative_Boundaries |
| Rooster Canyon Permit Claims | MSR | Contour | Waterbodies |
| Mining Land Tenure | SR | Roads | Watercourse |
| Patent | Active Cell Claims | Trails | |

Reference data from Land Information Ontario and Ministry of Energy Northern Development and Mines.

Projection:
NAD83 UTM Zone 16N

Map by 29homson Environmental
June 25, 2021



X SL#4
 X SL#3
 X SL#1
 X SL#2
 HISTORIC PITS + TRENCH
 EAST SHAFT

ZONE # 1 (1997)
 ADIT EXTENSION
 ROOSTER CANYON FAULT
 317006
 332404 #3 POST
 #2 POST

LEGEND

- X 4 SAMPLE SITE AND NUMBER
- 4 ROCK SAMPLES
- ▣ SHAFT
- └ ADIT
- HISTORIC PITS
- ┌ TRENCH
- ┌ OLD TRENCH
- 50M L X 2HW X 2MD
- ┌ PIT 5ML X 4MW X 3MD
- ┌ OPEN CUT
- ┌ SUGAR QUARTZ VEIN
- ┌ OPEN STOPE
- ┌ CASQUE ISLES HIKING TRAIL
- ┌ ATV BACKHOE TRAIL - ACCESS TO ROOSTER CANYON PROPERTY (1997)