

We are committed to providing [accessible customer service](#).

If you need accessible formats or communications supports, please [contact us](#).

Nous tenons à améliorer [l'accessibilité des services à la clientèle](#).

Si vous avez besoin de formats accessibles ou d'aide à la communication, veuillez [nous contacter](#).

Abstract

The Meteor Lake Property is known for its placer gold, and a parallel prospecting campaign was in progress investigating the outcrops. This program revolved around exploration for placer gold on the property.

The property appears to be mostly covered with overburden with few outcrops. Good gold along with some historic features were located during this campaign. More sampling should be performed near where the goods gold counts were located.

CJP Exploration Inc. and Alexis Morin

Meteor Lake Property Grass Roots Prospecting Program

C Jason Ploeger, P.Geol.
June 16, 2023

TABLE OF CONTENTS

1.0 Survey Details	4
1.1 Project Name	4
1.2 Client.....	4
1.3 Overview	4
1.4 Objective	4
1.5 Survey & Physical Activities Undertaken.....	4
1.6 Summary of Results, Conclusions & Recommendations	5
1.7 Co-ordinate System	5
2.0 Survey Location Details	6
2.1 Location	6
2.2 Access	6
2.3 Mining Claims.....	7
2.4 Property History	8
2.5 General Regional/Local Geological Settings	9
2.6 Target of Interest.....	10
3.0 Planning	11
3.1 Plans & Permits.....	11
4.0 Work Undertaken	12
4.1 Summary.....	12
4.2 Work/Traverses.....	12
4.3 Daily Log	13
4.4 Personnel.....	13
4.5 Survey Specifications.....	13
5.0 Overview of survey results	16
5.1 Summary of Samples Collected	16
5.2 Day 1 – 21 August 2022.....	18
5.3 Day 2 – 23 October 2022	31
5.4 Day 3 – 1 November 2022	37
5.5 Recommendations	43
5.6 Conclusions.....	43

LIST OF APPENDICES

APPENDIX A: STATEMENT OF QUALIFICATIONS

APPENDIX B: INSTRUMENT SPECIFICATIONS

APPENDIX C: LIST OF MAPS (IN MAP POCKET)

LIST OF TABLES AND FIGURES

Figure 1: Location of Meteor Lake Property 6
Figure 2: Claim Map with Claims being Prospected..... 8
Figure 3: Claim Map with Work Performed..... 12
Figure 4: Samples Waiting to be Classified..... 14
Figure 5: Classified Samples Waiting to be Panned 15
Figure 6: Total Gold Recovered From All Samples 17
Figure 7: Prospecting Traverse August 21, 2022 18
Figure 8: Picture of Classified Material from Sample 183..... 19
Figure 9: Picture of Classified Material from Sample 184..... 20
Figure 10: Picture of Classified Material from Sample 185..... 21
Figure 11: Picture of Classified Material from Sample 186..... 22
Figure 12: Picture of Classified Material from Sample 206..... 23
Figure 13: Picture of Classified Material from Sample 206..... 24
Figure 14: Picture of Classified Material from Sample 207..... 25
Figure 15: Picture of Classified Material from Sample 208..... 26
Figure 16: Picture of Classified Material from Sample 209..... 27
Figure 17: Picture of Classified Material from Sample 210..... 28
Figure 18: Picture of Classified Material from Sample 212..... 29
Figure 19: Picture of Classified Material from Sample 213..... 30
Figure 20: Prospecting Traverse October 23, 2022..... 31
Figure 21: Picture of Classified Material from Sample 265..... 32
Figure 22: Picture of Classified Material from Sample 266..... 33
Figure 23: Picture of Classified Material from Sample 267..... 34
Figure 24: Picture of Classified Material from Sample 268..... 35
Figure 25: Prospecting Traverse October 9, 2022 37
Figure 26: Picture of Classified Material from Sample 554-685 39
Figure 27: Picture of Gold from Sample 561-727 40
Figure 28: Picture of Classified Material from Sample 614-774 42

Table 1: Survey and Physical Activity Details..... 4
Table 2: Cell Claims and Claim Holder..... 7
Table 3: Daily Prospecting Log 13
Table 4: Summary of Samples Collected 16
Table 5: Summary of Features Located 16
Table 4: Features Located **Error! Bookmark not defined.**

1.0 SURVEY DETAILS

1.1 PROJECT NAME

This project is known as the **Meteor Lake Property**.

1.2 CLIENT

CJP Exploration Inc.
15 MacDonald St.
Larder Lake, Ontario
P0K1L0

And

Alexis Morin
PO Box 246
Kirkland Lake, Ontario
P2N 3H7

1.3 OVERVIEW

During the summer of 2022 two days of prospecting traverses along with one day of overburden pitting were performed on the Meteor Lake Property. The prospecting was performed to determine the possible extent of the placer gold previously noted in the gravel. Prospecting was accomplished by panning equivalent to a 5 gallon pail of material that was collected at a variety of locations on the claim group.

1.4 OBJECTIVE

The objective of the overburden pitting was to obtain samples from a deeper sediment horizon.

1.5 SURVEY & PHYSICAL ACTIVITIES UNDERTAKEN

Survey/Physical Activity	Dates	Total Days	Overburden Pits
Prospecting	May 19 th to May 24 th , 2022	2	
Overburden Pitting	August 21 and October 23, 2022	1	3
Sample Processing	May 6 to June 5, 2022	4	

Table 1: Survey and Physical Activity Details

1.6 SUMMARY OF RESULTS, CONCLUSIONS & RECOMMENDATIONS

The Meteor Lake Property is known for its placer gold, and a parallel prospecting campaign was in progress investigating the outcrops. This program revolved around exploration for placer gold on the property.

The property appears to be mostly covered with overburden with few outcrops. Good gold along with some historic features were located during this campaign. More sampling should be performed near where the goods gold counts were located.

Two days of placer prospecting and one day of excavator work was performed in the summer and fall of 2022.

1.7 CO-ORDINATE SYSTEM

Projection: UTM zone 17N

Datum: NAD83

UTM Coordinates near the center of Grid: 17 T 472300 Easting, 5238600 Northing

2.0 SURVEY LOCATION DETAILS

2.1 LOCATION

The Meteor Lake Property is located mostly in Baulah Township approximately 30 km south-southwest of Shining Tree, Ontario. The traverse area covers a portion of claims numbered 663566, 674277, 663572, 674276, 663542, 663543, 663544, 674624, 674622, 663530, 663540, 674641, 674635, 674636, 674632, 674640 and 674633, located in Beulah, Moffat and Hodgetts Townships, within the Sudbury Mining Division.

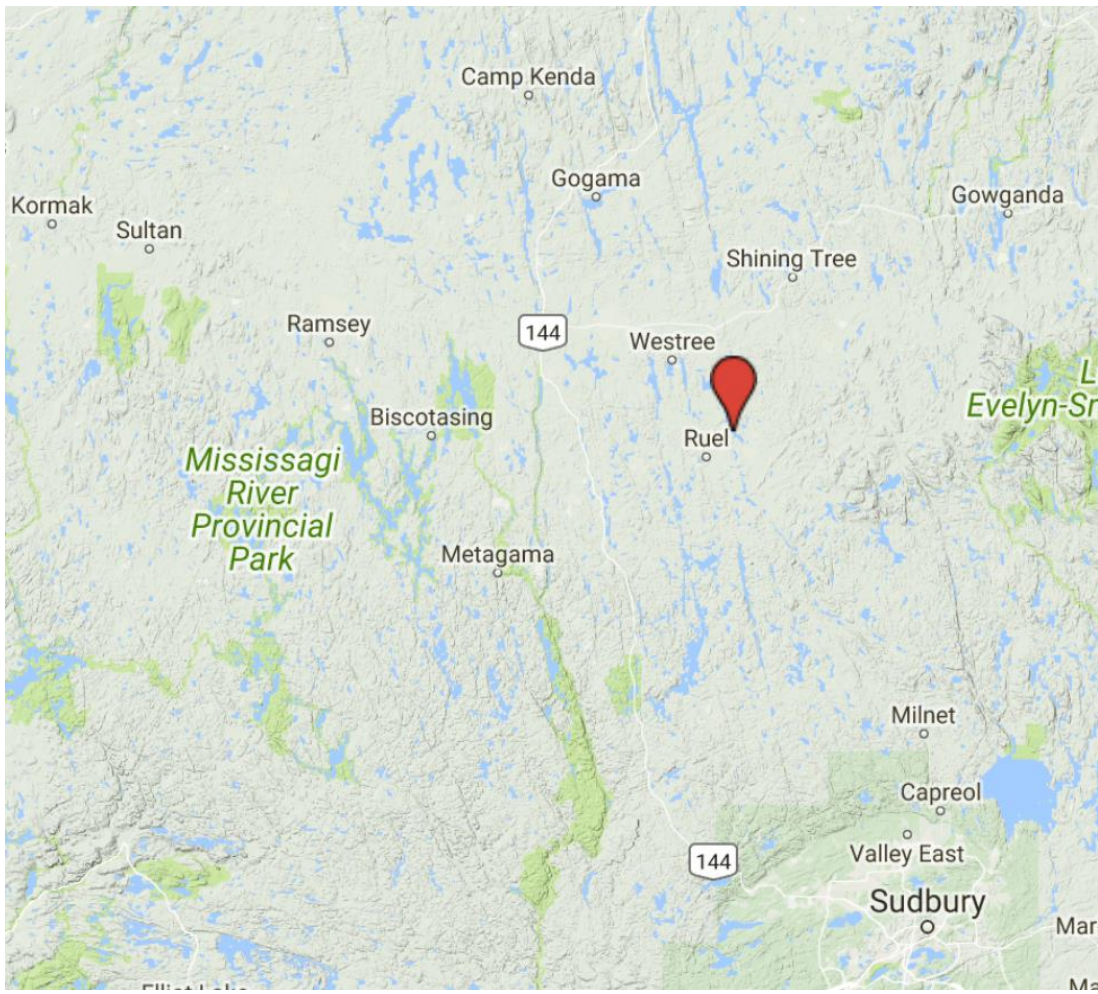


Figure 1: Location of Meteor Lake Property

2.2 ACCESS

Access to the property was attained with a 4x4 truck via highway 560 approximately 19 km west of the Shining Tree. At this point the Meteor Lake Road was travelled south for

31 kilometers to a point where the property straddles the road. Other old forestry roads were also taken to allow for additional access.

2.3 MINING CLAIMS

Claim Number	Cell ID	Holder	Township
663566	41P06D076	CJP Exploration Inc. and Alexis Morin	BEULAH
674277	41P06D077	CJP Exploration Inc.	BEULAH
663572	41P06D097	CJP Exploration Inc. and Alexis Morin	BEULAH
674276	41P06D098	CJP Exploration Inc.	BEULAH
663542	41P06D119	CJP Exploration Inc. and Alexis Morin	BEULAH
663543	41P06D138	CJP Exploration Inc. and Alexis Morin	BEULAH
663544	41P06D139	CJP Exploration Inc. and Alexis Morin	BEULAH
674624	41P06D120	CJP Exploration Inc.	BEULAH
674622	41P06C101	CJP Exploration Inc.	BEULAH
663530	41P06C122	CJP Exploration Inc. and Alexis Morin	BEULAH
663540	41P06C184	CJP Exploration Inc. and Alexis Morin	BEULAH
674641	41P06C207	CJP Exploration Inc.	BEULAH
674635	41P06C227	CJP Exploration Inc.	BEULAH
674636	41P06C248	CJP Exploration Inc.	BEULAH, HODGETTS
674632	41P06C269	CJP Exploration Inc.	HODGETTS
674640	41P06C270	CJP Exploration Inc.	HODGETTS
674633	41P06C271	CJP Exploration Inc.	HODGETTS

Table 2: Cell Claims and Claim Holder

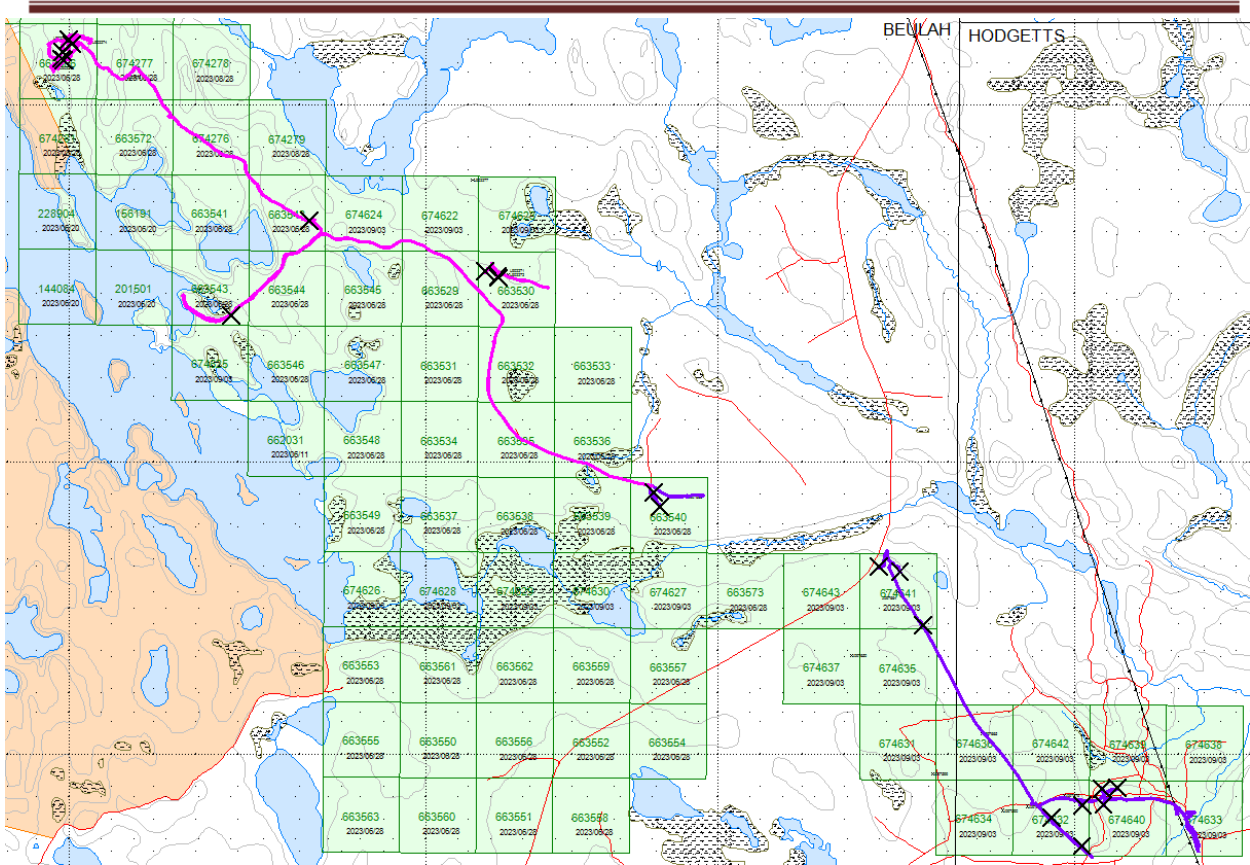


Figure 2: Claim Map with Claims being Prospected.

2.4 PROPERTY HISTORY

Some historical exploration has been carried out over the survey area. The following list describes the previous geoscience work, which was collected by the Mines and Minerals Division and provided by OGSEarth (MNMD & OGSEarth, 2023).

- **1958-1960: Kamis Uranium Mines Limited (File 41P06SW0012, 41P06NW0023)**
Drilling and Compilation
Between 1958 and 1960 Kamis compiled data and drilled 6 overburden holes, totalling 287 feet.
- **1958-1960: Casgoran Mines (41P06NW0022)**
Compilation
Between 1958 and 1960 Casgoran reported compiling data.
- **1960: Concor Chibougamau Mines (41P06NW0024)**

Compilation

In 1960 Concor reported compiling data.

- **1980: EW Bazinet, GH Coyne (41P06SW0002)**
Airborne Geophysics
In 1980 Bazinet and Coyne flew an airborne Magnetometer and EM surveys.
- **1980-1981: Canadian Gold & Metals Inc, Meteor Resources Inc (Files 41P06NW0021, 42A08NE0230)**
Airborne Geophysics
Between 1980 and 1981 Canadian Gold and Meteor Resources flew an airborne Magnetometer and EM surveys.
- **1981: Vermillion Placers Inc and W T Investments Ltd (File 41P06SW0010 and 41P06SW0009)**
Drilling
In 1981 Vermillion Placers drilled 29 overburden holes, totalling 2324 feet.
- **1983-1987: Harlin Resources Ltd (Files 41P06NW0010, 41P06SW0011, 41P06NW0012 and 41P06NW0011)**
Airborne Geophysics, Ground Geophysics, Drilling and Physical
Between 1983 and 1987 Harlin flew an airborne Magnetometer and EM surveys and performed some ground magnetometer, EM and Seismic surveys. They also dug test pits along with drilling 35 overbuden holes totalling 2197 feet
- **1997-2004: G Salo (File 41P06SW2001 and 20000001169)**
Physical
Between 1997 and 2004 Salo prospected and dug test pits.

2.5 GENERAL REGIONAL/LOCAL GEOLOGICAL SETTINGS

The Geology was taken from Les Demczuk and Michael Philpot (Marlin Resources Limited), "Report on the Vermillion River Placer Property Meteor-Opikinimika Lake Area, Garibaldi, Moffat and Baulah Townships Larder Lake Mining Division, Ontario" 1986.

"Regional Geology Bedrock consists of the following Precambrian rocks: Keewatin Formation (mafic to felsic metavolcanics), Timiskaming Formation (metasediments), Pre-Algonian Formation (ultramafic to intermediate intrusives), Algoma Formation (intermediate to felsic intrusives), and Matachewan Formation (diabase dikes). Porphyritic granite, gneiss, granodiorite and diorite of the Algoma Formation are the most predominant rock type in the vicinity of the property.

There is approximately 10 percent bedrock exposure as the area has been masked by

Pleistocene glacio-fluvial sediments. The Vermilion River system appears to be partly controlled by a north-northwesterly fault system. Within this system lies the following glacial deposits: glacio-eolian: dune sands and silts glaciolacustrine: lake bottom silts and clays, deltaic deposits glacio-fluvial: gravels, sands and silts deposited as eskers, kame terraces or outwash.”

2.6 TARGET OF INTEREST

The target of interest is identifying the areas of concentration of the placer gold.

3.0 PLANNING

3.1 PLANS & PERMITS

The prospecting work reported on here was surficial and did not require any plans or permits. The excavator work was performed under permit PR-22-000131.

4.0 WORK UNDERTAKEN

4.1 SUMMARY

During the summer of 2022 two days of prospecting traverses along with one day of overburden pitting were performed on the Meteor Lake Property. The Meteor Lake Property is known for its placer gold and parallel prospecting campaigns were in progress investigating the placer gold. This program revolved around prospecting the outcrops on the property to locate underlying rock types and potential mineralization.

4.2 WORK/TRAVERSES

Traverses were performed on the north and south of property with the excavator work being on a single claim in the northern part of the property.

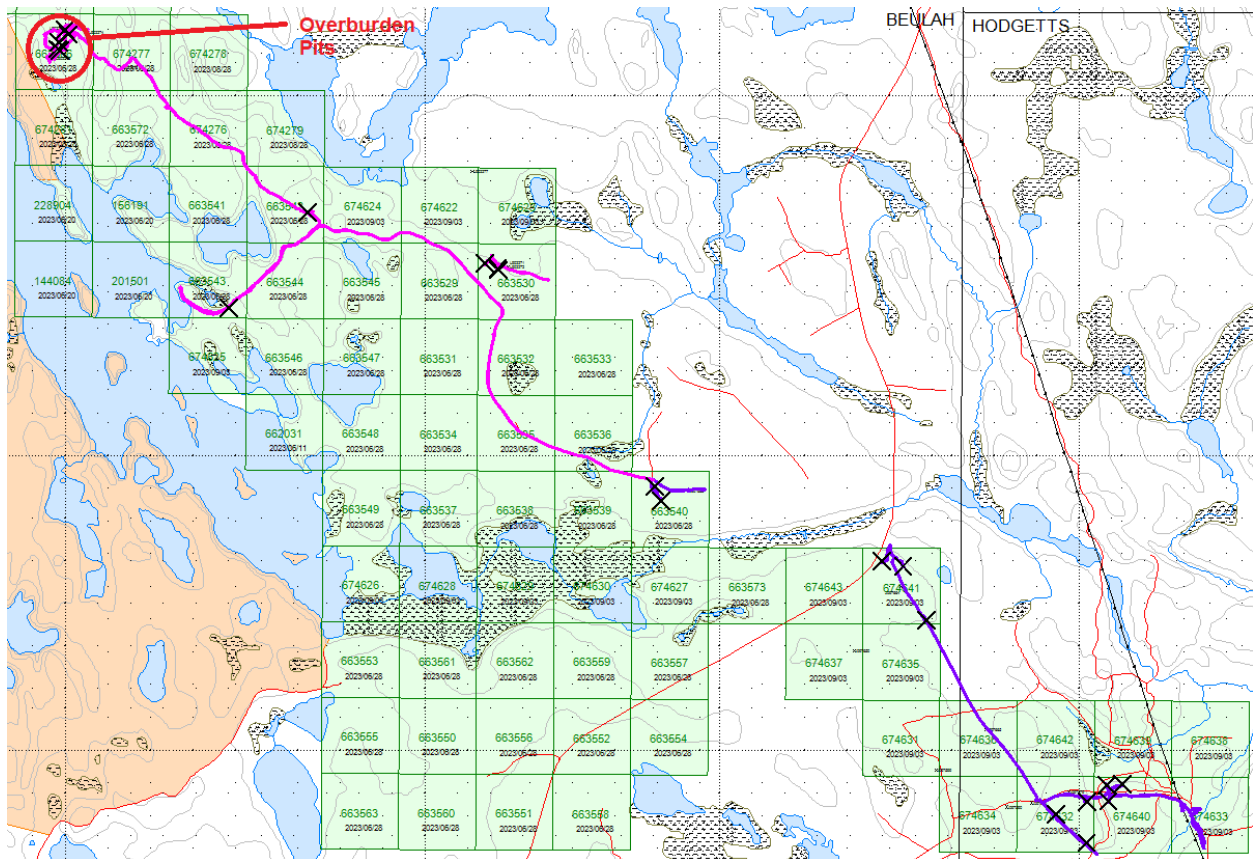


Figure 3: Claim Map with Work Performed

4.3 DAILY LOG

Date	Description
August 21, 2022	Alexis and Christine performed a prospecting traverse for placers near the south end of the property.
October 23, 2022	Alexis and Christine performed a prospecting traverse for placers near the north end of the property.
November 1, 2022	An excavator was floated to the property and catted in approximately 2km. Alexis and operator dug and rehabbed 3 test pits and collected 4 samples from a depth of 6 feet. The excavator was then demobilized out.

Table 3: Daily Prospecting Log

4.4 PERSONNEL

Alexis Morin and Christine Belisle of Englehart, Ontario prospected the property for placer gold.

4.5 SURVEY SPECIFICATIONS

Historically the best gold counts were on the point of land on Meteor Lake. Traverses were made around the extremities of the staked claims. At each site a hole was dug to a depth where gravel was encountered which was generally within the first foot. A five-gallon pail worth of material was then collected. The material was then classified and run through sluice. The concentrate was then panned to determine if placer gold was present.

The excavator was used to dig small overburden pits to obtain a deeper sample of material. A similar size sample and the same processing method was used as in the prospecting. The hole was immediately filled in after the sample was taken.



Figure 4: Samples Waiting to be Classified



Figure 5: Classified Samples Waiting to be Panned

5.0 OVERVIEW OF SURVEY RESULTS

5.1 SUMMARY OF SAMPLES COLLECTED

CJP- Placer Samples			
Date	Sample Number	Total	Processed
August 21, 2022	183 – 186	4	4
	206—210, 212-213	8	8
October 23, 2022	265-268, 595-804	5	5
November 1, 2022	554-685, 561-727, 567-676, and 614-774	4	4

Table 4: Summary of Samples Collected

Easting	Northing	Feature
469595	5240801	Overburden pit
469543	5240646	Overburden pit
469526	5240804	Overburden pit
469497	5240789	Overburden trench
476439	5236026	Overburden pit
476519	5236032	Overburden trench/historic placer mine

Table 5: Summary of Features Located



Figure 6: Total Gold Recovered From All Samples

5.2 DAY 1 – 21 AUGUST 2022

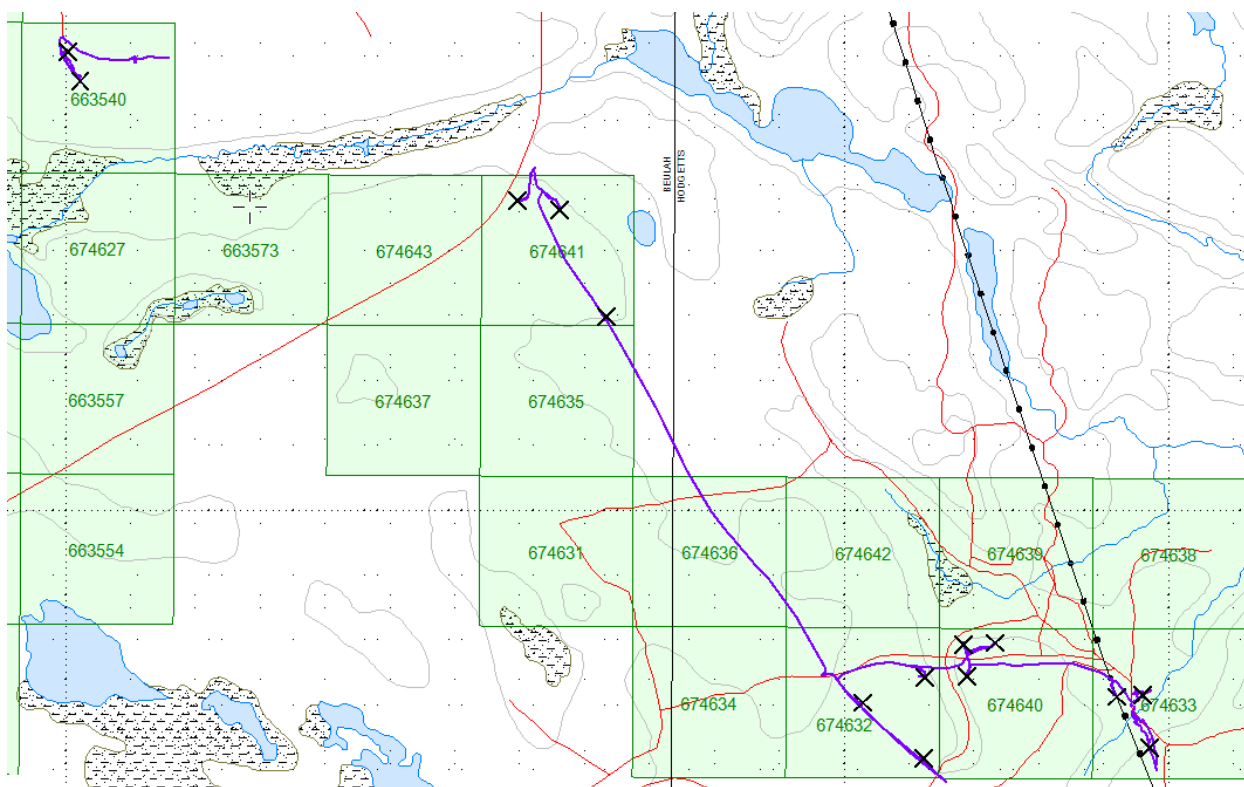


Figure 7: Prospecting Traverse August 21, 2022

Sample 183

Description:

- Depth: 0-1 foot
- Weight: 62.6 pounds
- Percent Panned after being classified: 36%
- Gold Recovered: 3 fine grains

Location:

UTM Zone 17T
475978E
5236089N



Figure 8: Picture of Classified Material from Sample 183

Sample 184

Description:

- Depth: 0-1 foot
- Weight: 62.4 pounds
- Percent Panned after being classified: 33%
- Gold Recovered: 1 medium grain

Location:

UTM Zone 17T
475967E
5236188N



Figure 9: Picture of Classified Material from Sample 184

Sample 185

Description:

- Depth: 0-1 foot
- Weight: 54.4 pounds
- Percent Panned after being classified: 37%
- Gold Recovered: 15 fine grains

Location:
UTM Zone 17T
476065E
5236192N



Figure 10: Picture of Classified Material from Sample 185

Sample 186

Description:

- Depth: 0-1 foot
- Weight: 51.6 pounds
- Percent Panned after being classified: 49%
- Gold Recovered: 6 fine grains

Location:
UTM Zone 17T
475848E
5236084N



Figure 11: Picture of Classified Material from Sample 186

Sample 206

Description:

- Depth: 2-3 feet
- Weight: 46.7 pounds
- Percent Panned after being classified: 61%
- Gold Recovered: 3 medium grains

Location:

UTM Zone 17T
475844E
5235836N



Figure 12: Picture of Classified Material from Sample 206

Sample 206

Description:

- Depth: 8 feet
- Weight: 62.6 pounds
- Percent Panned after being classified: 16%
- Gold Recovered: 3 medium grains

Location:

UTM Zone 17T
475844E
5235836N



Figure 13: Picture of Classified Material from Sample 206

Sample 207

Description:

- Depth: 0-1 feet
- Weight: 48.1 pounds
- Percent Panned after being classified: 47%
- Gold Recovered: 3 fine grains

Location:

UTM Zone 17T
475655E
5236008N



Figure 14: Picture of Classified Material from Sample 207

Sample 208

Description:

- Depth: 0-1 feet
- Weight: 48.1 pounds
- Percent Panned after being classified: 47%
- Gold Recovered: 3 fine grains

Location:

UTM Zone 17T
474865E
5237197N



Figure 15: Picture of Classified Material from Sample 208

Sample 209

Description:

- Depth: 0-1 feet
- Weight: 61.9 pounds
- Percent Panned after being classified: 18%
- Gold Recovered: 1 fine grain

Location:

UTM Zone 17T

474722E

5237527N



Figure 16: Picture of Classified Material from Sample 209

Sample 210

Description:

- Depth: 0-1 feet
- Weight: 68.8 pounds
- Percent Panned after being classified: 37%
- Gold Recovered: 3 fine grains

Location:

UTM Zone 17T
474592E
5237555N



Figure 17: Picture of Classified Material from Sample 210

Sample 212

Description:

- Depth: 0-1 feet
- Weight: 71.2 pounds
- Percent Panned after being classified: 25%
- Gold Recovered: 2 fine grains

Location:
UTM Zone 17T
473243E
5237922N



Figure 18: Picture of Classified Material from Sample 212

Sample 213

Description:

- Depth: 0-1 feet
- Weight: 71.4 pounds
- Percent Panned after being classified: 14%
- Gold Recovered: 4 fine grains

Location:
UTM Zone 17T
473204E
5238013N



Figure 19: Picture of Classified Material from Sample 213

5.3 DAY 2 – 23 OCTOBER 2022

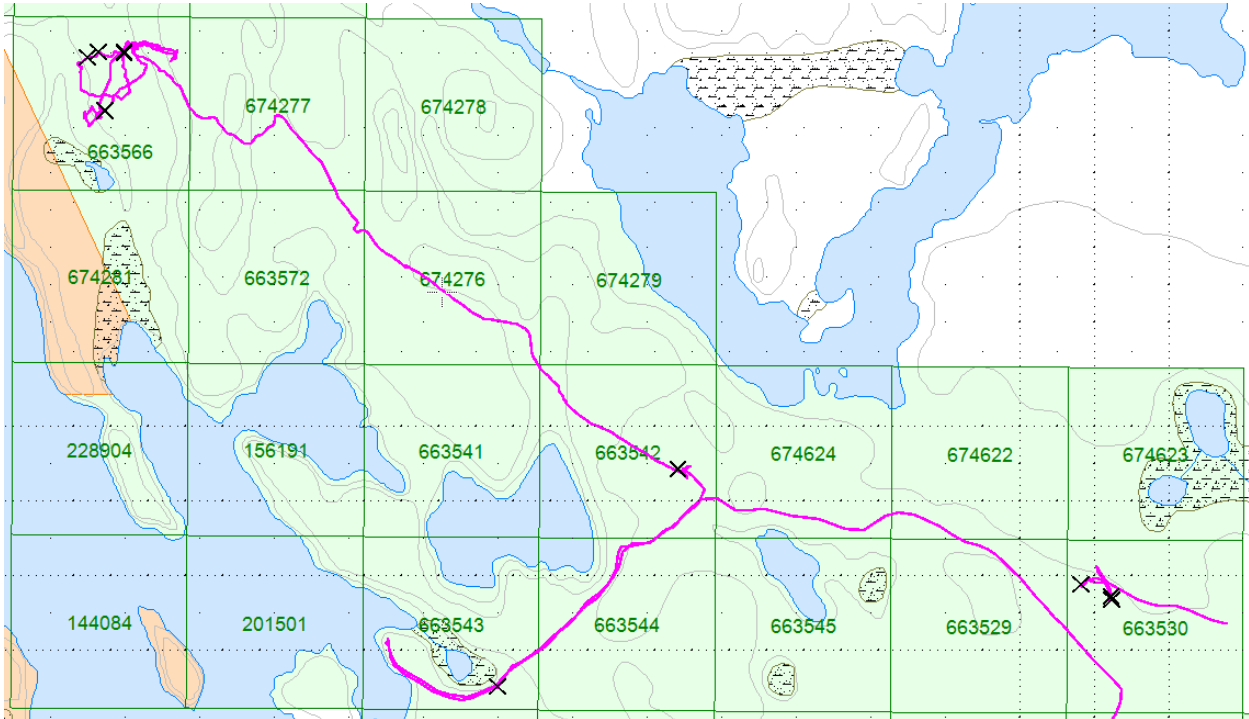


Figure 20: Prospecting Traverse October 23, 2022

This area represented regrowth of poplar and jackpine.

Sample 265

Description:

- Depth: 0-1 feet
- Weight: 52.2 pounds
- Percent Panned after being classified: 36%
- Gold Recovered: 5 medium grains

Location:

UTM Zone 17T
472245E
5239335N



Figure 21: Picture of Classified Material from Sample 265

Sample 266

Description:

- Depth: 0-1 feet
- Weight: 63.7 pounds
- Percent Panned after being classified: 10%
- Gold Recovered: 6 fine grains

Location:

UTM Zone 17T
472244E
5239344N



Figure 22: Picture of Classified Material from Sample 266

Sample 267

Description:

- Depth: 0-1 feet
- Weight: 69.9 pounds
- Percent Panned after being classified: 32%
- Gold Recovered: 4 fine grains

Location:

UTM Zone 17T
472163E
5239376N



Figure 23: Picture of Classified Material from Sample 267

Sample 268

Description:

- Depth: 0-1 feet
- Weight: 55.6 pounds
- Percent Panned after being classified: 76%
- Gold Recovered: 5 fine grains

Location:
UTM Zone 17T
470598E
5239103N



Figure 24: Picture of Classified Material from Sample 268

Sample 269

Description:

- Depth: 0-1 feet
- Weight: 71.4 pounds
- Percent Panned after being classified: 14%
- Gold Recovered: 4 fine grains

Location:
UTM Zone 17T
471081E
5239686N

PICTURE LOST

Sample 595-804

Description:

- Depth: 2 feet - bottom of old pit
- Weight: 47 pounds
- Percent Panned after being classified: 100%
- Gold Recovered: 5 fine and 1 medium grains

Location:
UTM Zone 17T
469595E
5240804N

100% Classified Material; therefore, no material remaining.

5.4 DAY 3 – 1 NOVEMBER 2022

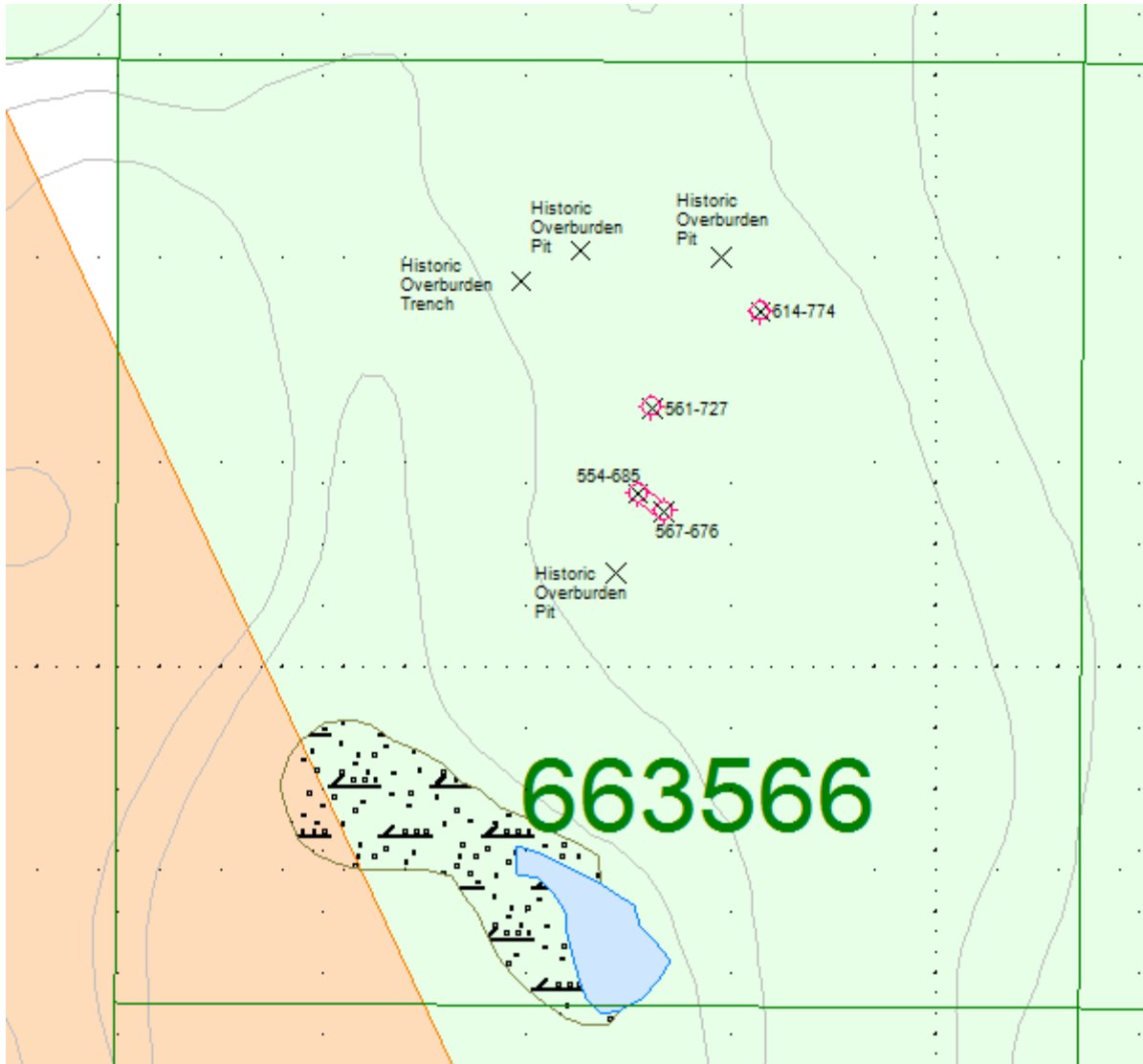


Figure 25: Prospecting Traverse November 1, 2022

Sample 554-685

Description:

- Depth: 6 feet
- Weight: 58 pounds
- Percent Panned after being classified: 97%
- Gold Recovered: 6 fine grains

Location:

UTM Zone 17T
469554E
5240685N



Figure 26: Picture of Classified Material from Sample 554-685

Sample 561-727

Description:

- Depth: 6 feet
- Weight: 41.4 pounds
- Percent Panned after being classified: 88%
- Gold Recovered: 1 fine grains

Location:

UTM Zone 17T
469561E
5240727N

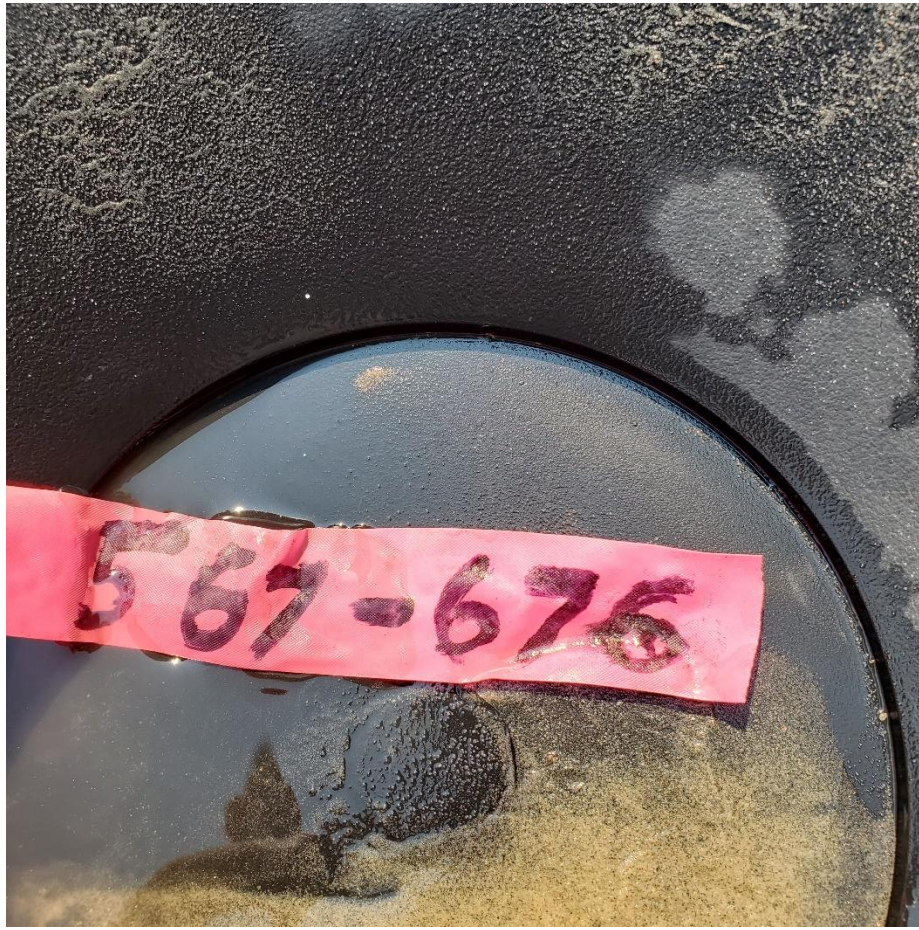


Figure 27: Picture of Gold from Sample 561-727

Sample 567-676

Description:

- Depth: 6 feet
- Weight: 56.2 pounds
- Percent Panned after being classified: 100%
- Gold Recovered: 50+ fine grains

Location:
UTM Zone 17T
469567E
5240676N

Sample 595-804

Description:

- Depth: 2 feet
- Weight: 47 pounds
- Percent Panned after being classified: 100%
- Gold Recovered: 5 fine and 1 medium grains

Location:
UTM Zone 17T
469595E
5240804N

Sample 614-774

Description:

- Depth: 6 feet
- Weight: 44.5 pounds
- Percent Panned after being classified: 99%
- Gold Recovered: 22 fine grains

Location:

UTM Zone 17T
469614E
5240774N



Figure 28: Picture of Classified Material from Sample 614-774

5.5 RECOMMENDATIONS

It is recommended that a LiDAR survey be flown for the area. This would allow for outcrop locations to be more easily located. This may also assist in locating the channels that are associated with the placer deposits.

The old data should be georeferenced and compiled to better determine if there is a pattern to the placer gold.

More sampling should be performed near where the goods gold counts and historical features were located.

Poor gold was located on some of the claims. These claims should be dropped.

5.6 CONCLUSIONS

The property appears to be mostly covered with overburden with few outcrops. Good gold along with some historic features were located during this campaign. More sampling should be performed near where the goods gold counts were located.

APPENDIX A

STATEMENT OF QUALIFICATIONS

I, C. Jason Ploeger, hereby declare that:

1. I am a professional geophysicist with residence in Larder Lake, Ontario and am presently employed as a Geophysicist and Geophysical Manager of Canadian Exploration Services Ltd. of Larder Lake, Ontario.
2. I am a Practising Member of the Association of Professional Geoscientists, with membership number 2172.
3. I graduated with a Bachelor of Science degree in geophysics from the University of Western Ontario, in London Ontario, in 1999.
4. I have practiced my profession continuously since graduation in Africa, Bulgaria, Canada, Mexico and Mongolia.
5. I am a member of the Ontario Prospectors Association, a Director of the Northern Prospectors Association and a member of the Society of Exploration Geophysicists.
6. I do have an interest in the properties and securities of **CJP Exploration Inc.**
7. I am responsible for the field work, final processing and validation of the survey results and the compilation of the presentation of this report. The statements made in this report represent my professional opinion based on my consideration of the information available to me at the time of writing this report.

C. Jason Ploeger, P.Geo., B.Sc.
Geophysical Manager
Canadian Exploration Services Ltd.

Larder Lake, ON
June 16, 2023



APPENDIX B

GARMIN GPS MAP 62S



Physical & Performance:	
Unit dimensions, WxHxD:	2.4" x 6.3" x 1.4" (6.1 x 16.0 x 3.6 cm)
Display size, WxH:	1.43" x 2.15" (3.6 x 5.5 cm); 2.6" diag (6.6 cm)
Display resolution, WxH:	160 x 240 pixels
Display type:	transflective, 65-K color TFT
Weight:	9.2 oz (260.1 g) with batteries
Battery:	2 AA batteries (not included); NiMH or Lithium recommended
Battery life:	20 hours
Waterproof:	yes (IPX7)
Floats:	no
High-sensitivity receiver:	yes
Interface:	high-speed USB and NMEA 0183 compatible
Maps & Memory:	

Basemap:	yes
Preloaded maps:	no
Ability to add maps:	yes
Built-in memory:	1.7 GB
Accepts data cards:	microSD™ card (not included)
Waypoints/favorites/locations:	2000
Routes:	200
Track log:	10,000 points, 200 saved tracks
Features & Benefits:	
Automatic routing (turn by turn routing on roads):	yes (with optional mapping for detailed roads)
Electronic compass:	yes (tilt-compensated, 3-axis)
Touchscreen:	no
Barometric altimeter:	yes
Camera:	no
<u>Geocaching-friendly:</u>	yes (paperless)
<u>Custom maps compatible:</u>	yes
Photo navigation (navigate to geotagged photos):	yes
Outdoor GPS games:	no
Hunt/fish calendar:	yes
Sun and moon information:	yes
Tide tables:	yes

Area calculation:	yes
Custom POIs (ability to add additional points of interest):	yes
Unit-to-unit transfer (shares data wirelessly with similar units):	yes
Picture viewer:	yes
Garmin Connect™ compatible (online community where you analyze, categorize and share data):	yes

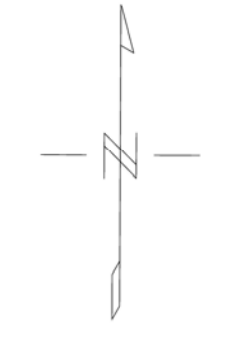
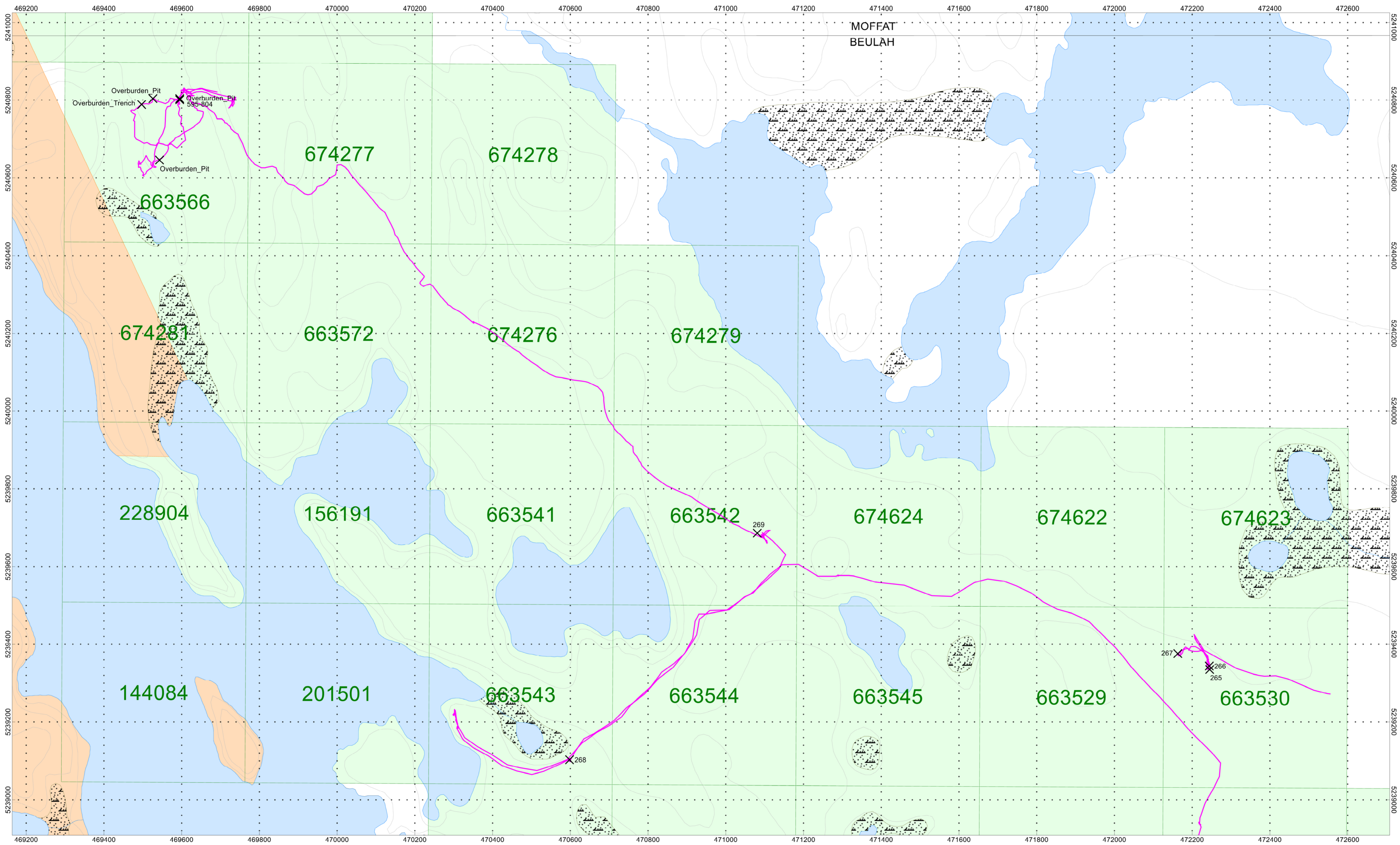
- *Specifications obtained from www.garmin.com*

APPENDIX C

LIST OF MAPS (IN MAP POCKET)

- 1) CJP-Meteor-Prospecting-North-Placer-2022 (1:5000)
- 2) CJP-Meteor-Prospecting-South-Placer-2022 (1:5000)
- 3) CJP-Meteor-Prospecting-North-Pits-2022 (1:2500)

Total Maps = 3



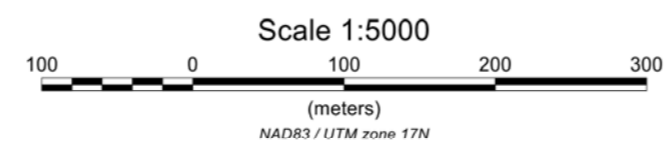
**CJP EXPLORATION INC.
and
ALEXIS MORIN**

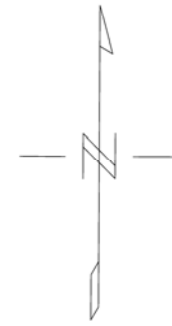
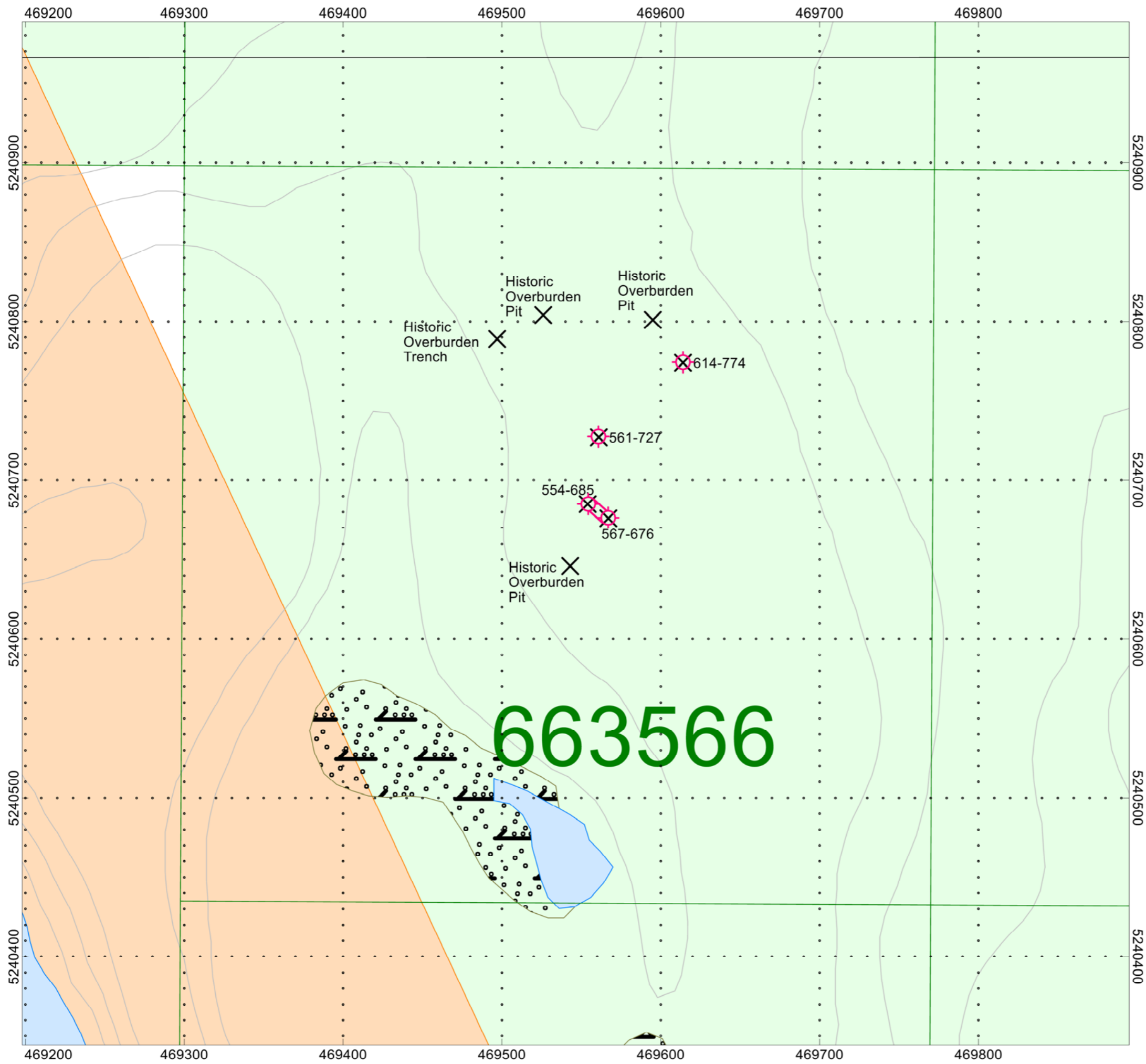
METEOR LAKE PROPERTY
Beulah, Hodgetts and
Moffat Townships, Ontario



Placer Prospecting Traverse Map
October 23, 2022

Samples Collected By: Alexis Morin
and Christine Belisle
Map Drawn By: C Jason Ploeger
May 2023

Drawing: CJP-Meteor-Prospecting-North-Placer-2022





-  Overburden Test Pit 6 Feet Deep Rehabbed
-  Overburden Trench with Test Pits 6 Feet Deep Rehabbed

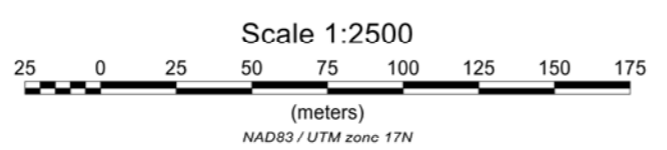
**CJP EXPLORATION INC.
and
ALEXIS MORIN**

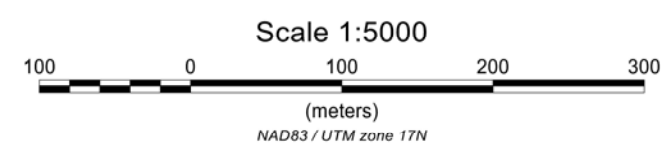
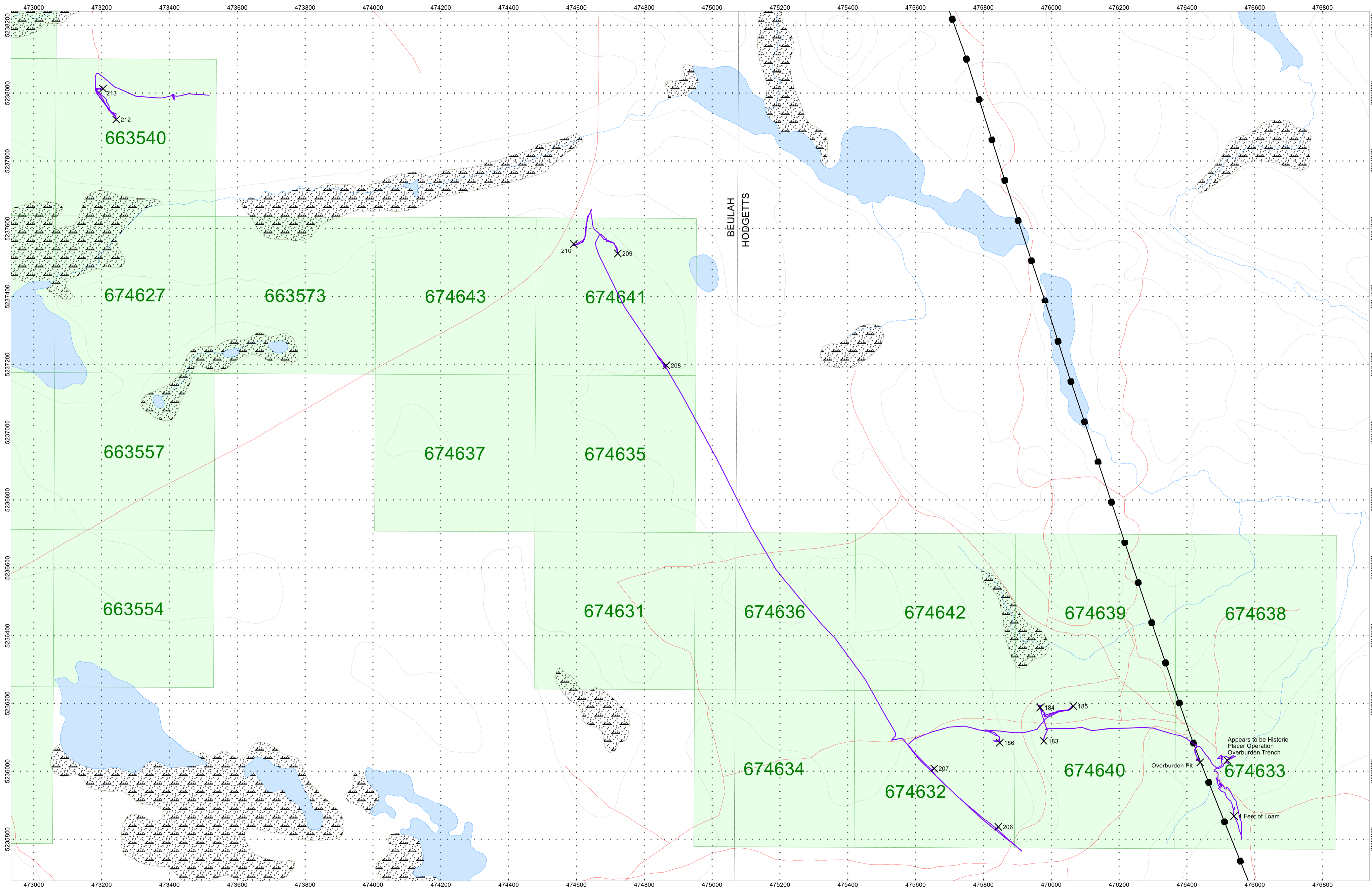
**METEOR LAKE PROPERTY
Beulah Township, Ontario**

Test Pits Plan Map
November 1, 2022

Samples Collected By: Alexis Morin
Map Drawn By: C Jason Ploeger
June 2023

Drawing: CJP-Meteor-Prospecting-North-Pits-2022





CJP EXPLORATION INC. and ALEXIS MORIN	
METEOR LAKE PROPERTY Beulah, Hodgetts and Moffat Townships, Ontario	
Placer Prospecting Traverse Map August 21, 2022	
Samples Collected By: Alexis Morin and Christine Belsle Map Drawn By: C Jason Ploeger May 2023	
Drawing: CJP-Meteor-Prospecting-South-Placer-2022	