

We are committed to providing [accessible customer service](#).

If you need accessible formats or communications supports, please [contact us](#).

Nous tenons à améliorer [l'accessibilité des services à la clientèle](#).

Si vous avez besoin de formats accessibles ou d'aide à la communication, veuillez [nous contacter](#).



# Assessment Report

*2021 Phase One -  
Prospecting Program  
Gowganda West Property*

(NAD 83 UTM, Zone 17 North)

Leith – Leonard – Milner – Tyrrell– Townships  
Larder Lake Mining Division Ontario

March 8, 2023,

Brian Madill  
Mark Rochefort



# Table of Contents

Abbreviation Table .....	3
Figure Table .....	4
Table List.....	4
1. Introduction.....	5
2. Location, Access & Property Description .....	5
2.1 Location and Access .....	5
2.2 Property Description .....	6
3. Topography and Climate .....	7
3.1 Physiography:.....	7
3.2 Climate: .....	7
4. Property History .....	7
5. Geology .....	9
5.1 - Regional Geology .....	9
5.2 - Property Geology .....	11
6. 2021 Field Program .....	11
6.1 Phase 1 – Prospecting .....	11
7.0 Conclusions and Recommendations.....	28
References .....	29
Appendix .....	30
Appendix A– Statement of Qualifications.....	30
Appendix B - Claim Group.....	32
Appendix C– Grab Sample List .....	41
Appendix D– Grab Sample Assay Certifications.....	47

## Abbreviation Table

(In order of appearance)

Abbreviation	Definitions
m	metres
°C	Degree Celsius
°F	Degree Fahrenheit
mm	millimetres
in	Inches
OGS	Ontario Geological Survey
ODM	Ontario Division of Mines
GR	Geology Reports
#	Number
ddh	Diamond Drill Hole
oz	Ounces
Au	Gold
Ag	Silver
%	Percentage
Cu	Copper
oz/t	Ounces per Ton
km	Kilometer
MNDM	Ministry of Development and Mines
g/t	Grams per Ton
NAD 83	North American Datum 1983
UTM	Universal Transverse Mercator
QA/QC	Quality Assurance / Quality Control
Sq. m.	Square meters
E-W	East-West
N	North
NW	North-West
EXP	Exposure
Qtz	Quartz
Carb	Carbonate
mod	Moderate
Py	Pyrite
Po	Pyrrhotite
Cal	Calcite
tr	Trace
Cpy	Chalcopyrite
diss	Disseminated
fg	Fine grained
QV	Quartz Vein
chl	Chlorite
cm	Centimeter
mg	Medium Grained

## Figure Table

Figure	Scale	Page
Figure 2.1 - Location & Access Map	1: 750000	5
Figure 2.2 - Property Description Map	1: 100000	6
Figure 5.1 - Regional Geology	1: 250000	10
Figure 6.1.1 Gowganda West 2021 Prospecting Traverses	1: 100000	12
Figure 6.1.2 Prospecting Grab Sample Locations	1: 100000	13
Figure 6.1.3 Grab Sample Highlights Zone 1	1: 5000	15
Figure 6.1.4 Grab Sample Highlights Zone 3	1: 500	16
Figure 6.1.4 Prospecting Grab Sample Locations	1: 5000	17
Figure 6.1.5 Prospecting Grab Sample Locations	1: 5000	18
Figure 6.1.6 Prospecting Grab Sample Locations	1: 5000	19
Figure 6.1.7 Prospecting Grab Sample Locations	1: 5000	20
Figure 6.1.8 Prospecting Grab Sample Locations	1: 5000	21
Figure 6.1.9 Prospecting Grab Sample Locations	1: 5000	22
Figure 6.1.10 Prospecting Grab Sample Locations	1: 5000	23
Figure 6.1.11 Prospecting Grab Sample Locations	1: 5000	24
Figure 6.1.12 Prospecting Grab Sample Locations	1: 5000	25
Figure 6.1.13 Prospecting Grab Sample Locations	1: 5000	26
Figure 6.1.14 Prospecting Grab Sample Locations	1: 5000	27

## Table List

Table	Page
Appendix B - Table 2.2 - Property Claim Group	32
Table 6.1 - Prospecting Highlights	14
Appendix C – Grab Sample List	41

# 1. Introduction

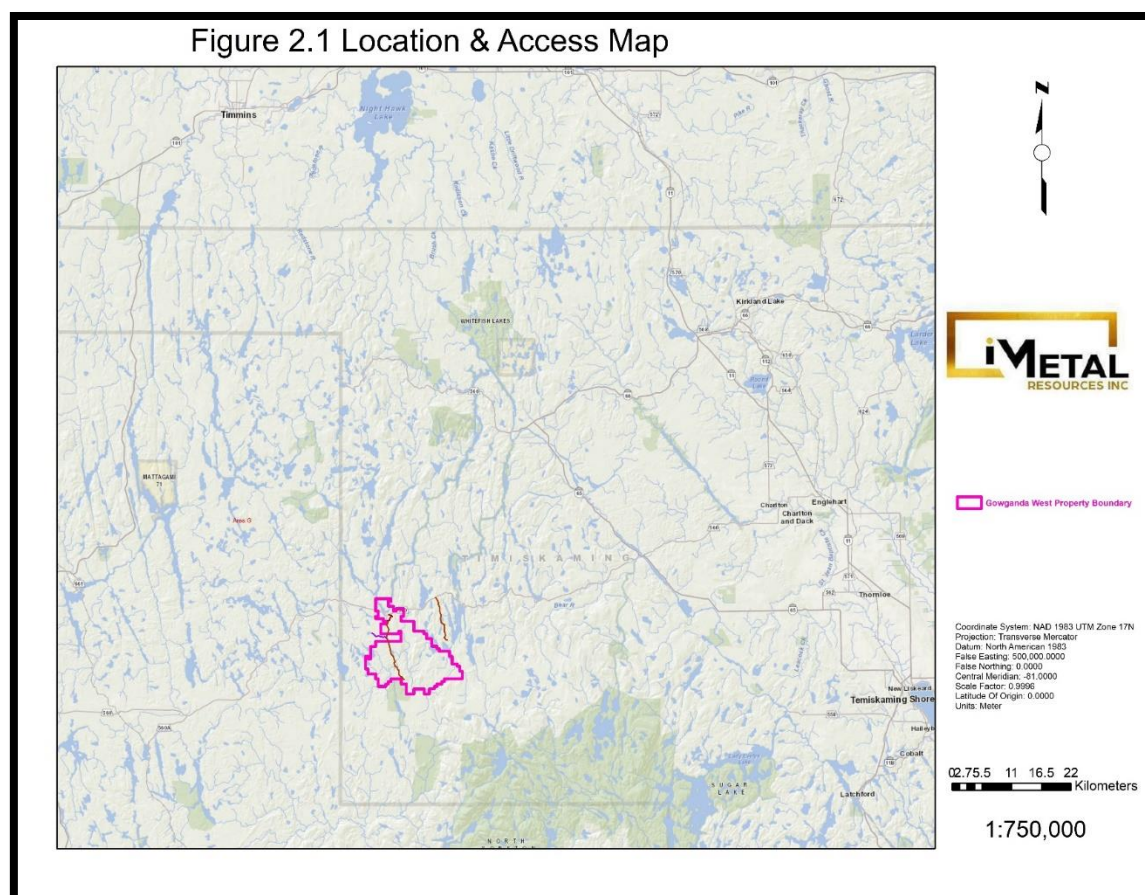
Between April 20th and November 17, 2021, a two-phase field program consisting of prospecting and channel sampling was carried out on active unpatented mining claim cells registered to IMetals Resources Inc. in Leonard, Leith, Milner and Tyrrell Townships, Larder Lake Mining division, Ontario, Canada.

This report covers the 2021 Phase One Prospecting Program completed on behalf of IMetals Resources Inc. by Omni Resource Consulting Ltd. and Riverside Resources Consulting Ltd. between April 24 and May 21, 2021, whereas authors reliance from contracted field observation and third-party analysis aided by publicly available historical records forms the basis of information included therein.

## 2. Location, Access & Property Description

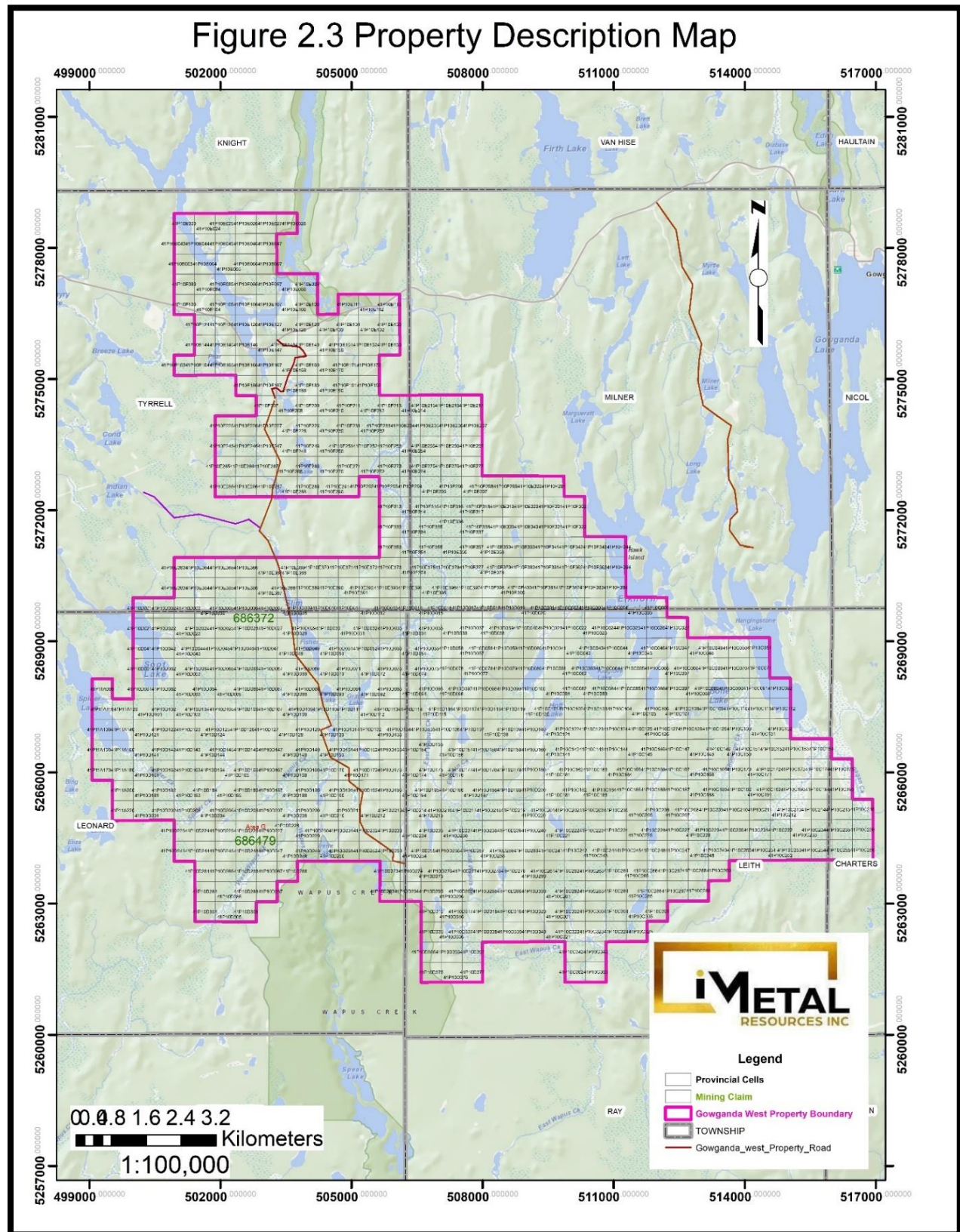
### 2.1 Location and Access

The property is easily accessed by Highway 560 which runs west from highway 11 in the small Town Englehart. From there Highway 560 travels westward to the Town of Elk Lake which is approximately 45 km west of Englehart. Highway 560 then runs west for another 45 kilometers west to the small town of Gowganda as is seen in Figure 2.1. The Spear Lake Road which is 17 kilometers west of Gowganda is a dry weather road lying south of highway 560 transects the Gowganda West Property in north to south directions and is primary project access.



## 2.2 Property Description

The property consists of 852 claim cells and covers 5 townships. The claim group is centered around Leith and Leonard Townships and expands northward to cover parts of Tyrrell, and Milner Townships, and eastward to Charters. See *Figure 2.3 Property Description & Table 2.2 Claim Group List in Appendix B.*



## 3. Topography and Climate

**3.1 Physiography:** The project area lies within the central Canadian Shield in the lower Abitibi geologic sub-province. The region can be generalized as being in the boreal climactic region, characteristically covered by forest, swamps and lakes with some relief. Relief on the property ranges between 330m to 390m. The claim group has moderate bedrock exposure and generally thin overburden

**3.2 Climate:** The climatic conditions are typical for the central Canadian Shield with short, mild summer and long, cold winters. Mean temperatures range from  $-17^{\circ}\text{C}$  ( $0^{\circ}\text{F}$ ) in January, to  $18^{\circ}\text{C}$  ( $64^{\circ}\text{F}$ ) in July and mean annual precipitation throughout the region ranges from 812 to 876 mm (32-35in).

## 4. Property History

The level of historical exploration within the area defined by boundary limits of the current mining land cells have been very low to generally nil over much of the Gowganda West Gold Project property. There was prospecting and sampling regionally during the Gowganda silver rush in 1906, and with further gold prospecting following this silver rush. Later from the 1940's and onward into the present there have been local areas where exploration has taken place and includes ground geophysical surveys generally followed by limited drilling of the exploration targets. The historical information and data of early exploration indicates there are some areas that lie within limits of the current IMetals Resources Inc. property. The historical work and exploration activities have been sourced from reports produced by the Ontario Geological Survey (OGS) and/or from the Ontario Division of Mines (ODM) from their Geology Reports (GRs) in the 1970's and their Data Inventory Folios from the 1990's that describe most exploration activities up to those publication dates. Also, more modern data from assessment reports that have been filed have also provided some current data. The following is a list of historical activities within the current mining claim block and is very limited for each of the four townships with dates and type of exploration activity reported

### **Tyrrell Township:**

A review of the Ontario Division of Mines, Geoscience Report 152, Geology of Macmurchy and Tyrrell Townships, Districts of Sudbury, and Timiskaming by M.W. Carter in 1977 indicates some exploration activities and work were reported historically over parts of the current IMetals Resources Inc. property. The following activities are reported for those areas in Tyrrell Township.

### **Timiskaming Nickel Limited:**

In 1971, asbestos and copper showing prospect located northwest of Owl Lake in east central Tyrrell, and in ultramafic peridotite rock # 46 on Map #2365 in GR # 152, Owl Lake Group; and also map referenced by letter S for asbestos and copper in Mineral Occurrences section, and #'s 43 & 44 in Type of Work section and the work carried out on the property as reported in OGS 1990 Geological Data Inventory 508 Folio and located on the accompanying maps in the folio. The work reported was Airborne Magnetometer and Airborne Electromagnetic surveys (1968) + drilling 4 ddh that reported serpentine in the drill logs (1967-1968) + stripping-trenching-geology (1970-1971) also includes notation of reported work by Bengal Development Corporation Limited in 1960 of geophysical magnetometer and electromagnetic ground surveys



## **Benvan Mines Limited:**

In 1965-1971, gold, silver, cobalt and copper calcite vein prospect and showings located on the east side of Mosher Lake in northeast Tyrrell and within the Nipissing Diabase sill that overlies Cobalt Group sediments #26 and # 40 (1971 Putman, J.S. no work) on Map #2365 in GR # 152; and also map referenced by the letter Q for gold, silver, cobalt and copper in Mineral Occurrences section, and #'s 4, 5, 6, 7, 8, and 39 in Drill Hole Summary section and the work carried out on the property as reported in OGS 1990 Geological Data Inventory 508 Folio and accompanying folio maps. The work reported by Sinclair Miller Mines Ltd. formerly Sinclair Prospecting Syndicate (1961-1962) was geology + drilling 3 ddh's with pyrite, chalcopyrite, and galena reported in the logs and work reported by Benvan Mines Limited (1965) was drilling of 10 ddh totaling 1000 meters that reported pyrite, chalcopyrite, galena, smaltite, arsenopyrite, and niccolite reported in the drill logs in calcite veins.

The best assay reported (1965) was taken from surface copper oxide exposure adjacent to the Sundstrom Fault that returned 0.1 oz Au, 0.74 oz Ag, and 0.7% Cu as reported in the GR #152 page 37. Also as reported in GR # 152, on page 61 a 30-meter adit was driven to the Mosher Lake Zone from the east shore of Mosher Lake where a grab sample from the No. 2 vein in the upper Sinclair Zone assayed 587.73 oz/t Ag, and another grab sample from in the central Mosher Zone ran 175 oz/t Ag.

## **MacCallum-Pinkerton Prospect:**

In 2004, the work that was reported for assessment purposes was 1 ddh for 258 feet (78.64 meters) located approximately 350 meters north of the north end of the western lobe of Slim Lake.

The hole is reported to have intersected Proterozoic aged, Cobalt Group, fine grained argillite of the Gowganda Formation with little mineralization noted and with only trace pyrrhotite and rare chalcopyrite smeared along slips or in quartz stringers.

## **Leonard Township:**

A review of the Ontario Division of Mines, Geoscience Report 146, Geology of Fawcett and Leonard Townships, Districts of Sudbury, and Timiskaming by M.W. Carter in 1977 indicates that there are no showings and no exploration activities reported or took place to report on that lies within the in the east half of Leonard Township or over the IMetals Resources Inc current property. All the reported exploration activities historically occurred in the west half of Leonard Township.

In the OGS 1990, Geological Data Inventory Folio 508, there are two Mineral Occurrences located by designated by map reference letters Y and Z and mapped during early township mapping by the OGS on Map P.280 and Map 2359. The Y occurrence is a showing of chalcopyrite and malachite in quartz-calcite veinlets and is located just west of the Spear Lake Forest access road east of Wapus Creek 500 meters south of the bridge crossing on the creek and 1.0 km north of Irene Lake. The Z occurrence is a showing of chalcopyrite and is located at the northwestern tip of Grand Lake and 1.5 kilometers east of the Spear Lake Forest access road.

## **Milner Township:**

A review of OGS Report 175 Geology of the Gowganda Lake-Miller Lake Silver Area, District of Timiskaming by W.H. McIlwaine in 1978 indicates that there are no showings and no exploration activities reported or took place to report on within the southwest corner of Milner Township or over the IMetals Resources Inc current property. The Geology Map 2348 for Van Hise and Milner Townships that accompanies the OGS report indicates that geology in the southwest corner is underlain by the Proterozoic aged, Cobalt Group, sedimentary rocks of the Gowganda Formation and further subdivided as part of the Coleman Member. This map shows no known mineralization in the southwest corner of Milner Township but does show a series of parallel fault structures that are north-south trending and part of the Silver Five Lake and the Firth Lake fault system.

## **Leith Township:**

A review of Ontario Department of Mines and Northern Affairs Geological Report 89, Geology of Leith, Charters and Corkhill Townships, District of Timiskaming by W.H. McIlwaine in 1971 indicates that there are no showings and no exploration activities reported or took place to report on throughout most of Leith Township or over the IMetals Resources Inc current property. The Geology Map 2208 for Leith, Charters and Corkhill Townships that accompanies the OGS report indicates that geology in Leith is mostly underlain by the Proterozoic aged, Cobalt Group, sedimentary rocks of the Gowganda Formation that are locally intruded by Nipissing Diabase over the IMetals Resources Inc property.

There is a small window of Archean basement older mafic volcanic rocks and local minor iron formation in northern Leith Township and located on the west side of Elkhorn Lake. On the western side of Leith Township there are many quartz veins located within Nipissing Diabase. The only historically active exploration and mining activity is located within the southeast corner of Leith Township and is known as the Rustex Mining Corporation property. This was a small silver mine in the Nipissing diabase sill that operated in 1936-1938, and again in 1964-1966 and produced 80,186 ounces silver as reported in 1968. No other exploration activity is reported in Leith Township.

## **5. Geology**

### **5.1 - Regional Geology**

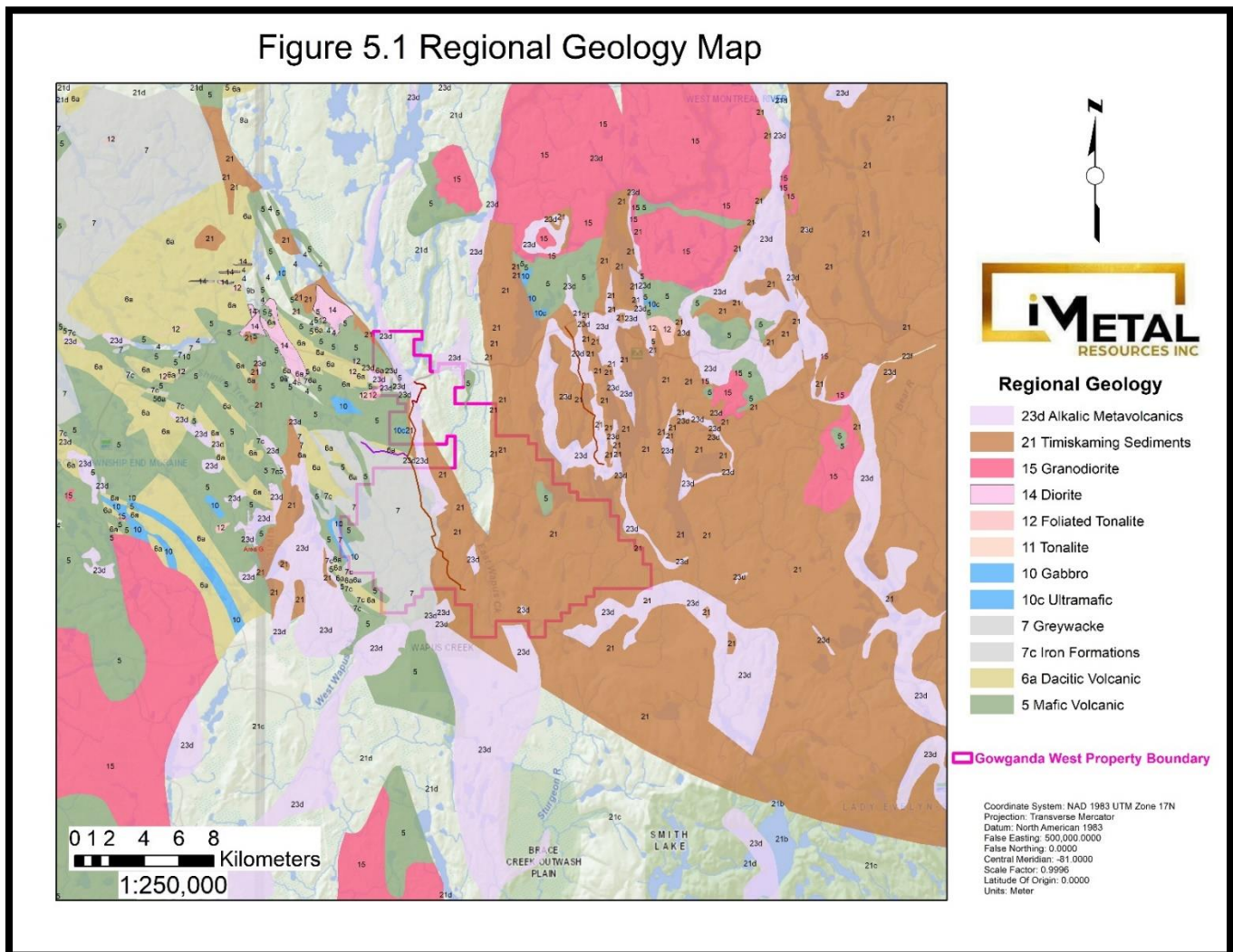
The area the Gowganda West Property as seen in Figure 5.1 covers an area of Archean volcanic and sedimentary rocks that occurs south of the main part of the Abitibi green stone belt. Volcanic sedimentary rocks of the Shining Tree area are intruded in the northwest by the Kenogamissi Batholith intruded to the southwest by the - Algoma granitoid complex and are conformably overlain to the east and south by sediments of the Huronian Super group.

Recent geochronological work has correlated the Archean stratigraphy of the Shining Tree area. In the area north of the Gowganda West group Archean volcanics are thought to be part of the Kidd – Munro assemblage, and the sediments are considered to belong to the Timiskaming assemblage. In addition, the Cadillac – Larder Lake Fault is now in recent years is now interpreted to extend westward into the Shining Tree area.

This fault system hosts important gold deposits at Kirkland Lake, Kerr Addison and in the Matachewan area. Nipissing diabase and quartz diabase occur within the area out cropping over large areas. The intrusive relationship to the Gowganda Formation has a structural relationship to the Gowganda and Lorrain formations indicate that the large masses are parts of the intrusive sills. As considerable erosion has occurred since the intrusion of the Nipissing diabase, these dikes tend to strike north–northwest throughout the area. To the north of the Gowganda West property the former Temex Resources Corp. property is thought to be underlain by Archean mafic and lesser intermediate volcanic rocks separated from abundant Timiskaming aged sediments by the northwest trending Tyrrell Structural Zone which is overlain unconformably to the east by Proterozoic sediments of the Gowganda Formation and intruded by the Nipissing Gabbro to the east. Numerous late feldspar porphyritic dikes and diabase dikes occur on the property.

Over most of the length of the Tyrrell Structural Zone a stratigraphy containing ultramafic and mafic volcanic flows occur to the north of the Tyrrell Structural Zone and are juxtaposed against a mafic volcanic stratigraphy to the south. In the south-central part of Tyrrell Township, Timiskaming aged sediments occur to the south of the Tyrrell Structural Zone. The Tyrrell Structural Zone strikes at 105 to 115 degrees and hosts several gold mineralized zones and has a known strike distance of 2500 meters and has a near vertical dip and has an average width of 100 meters. The Juby deposit is similar to third class mesothermal gold deposit associated with monzonitic to syenitic intrusions and formed from large magmatic – hydrothermal porphyry systems. The Juby Zone is estimated to contain 4 million ounces of gold averaging 1 gram per metric ton.

Figure 5.1 Regional Geology Map



## 5.2 - Property Geology

The available geological maps provided by the MNDM show that the property is covered by the Gowganda Formation which mostly consists of polymictic conglomerate. The Gowganda Formation occurs in the northwestern, northeastern, and central parts of Leonard Township. Its distribution is closely associated with that of the Nipissing Diabase.

The polymictic conglomerate consists of subangular and rounded cobbles and boulders of granite, gneiss, schists iron formation and felsic metavolcanics. Numerous diabase dikes striking northeast are shown on Map 2359 covering Fawcett and Leonard Townships. The diabase is medium to coarse grain and is known as the Nipissing diabase. In the northwestern part of the property on the eastern side of Soot Lake the diabase dikes tend to strike in a northwestern direction.

Although the diabase contains different facies, the commonest type is a medium – grained, mottled black and white ophitic rock. The pyroxene is subhedral and black, and the feldspar is usually pale green. Pyrite is usually present in the amounts of 2 percent. Some phases of the diabase are quartz bearing usually fine grained and altered. It is green in color and may contain irregular areas of white calcite. Chalcopyrite is often present in amounts of 1 to 3 percent. On the eastern side of Soot Lake Map 2359 shows northwestern bands of Metavolcanics and metasediments such as conglomerates and breccia, also bands of Felsic Metavolcanics such as Lapilli–tuffs. Historically little exploration work was done in the Gowganda West Group area due to the absence of proximal intrusive granite and by the extensive drift cover.

## 6. 2021 Field Program

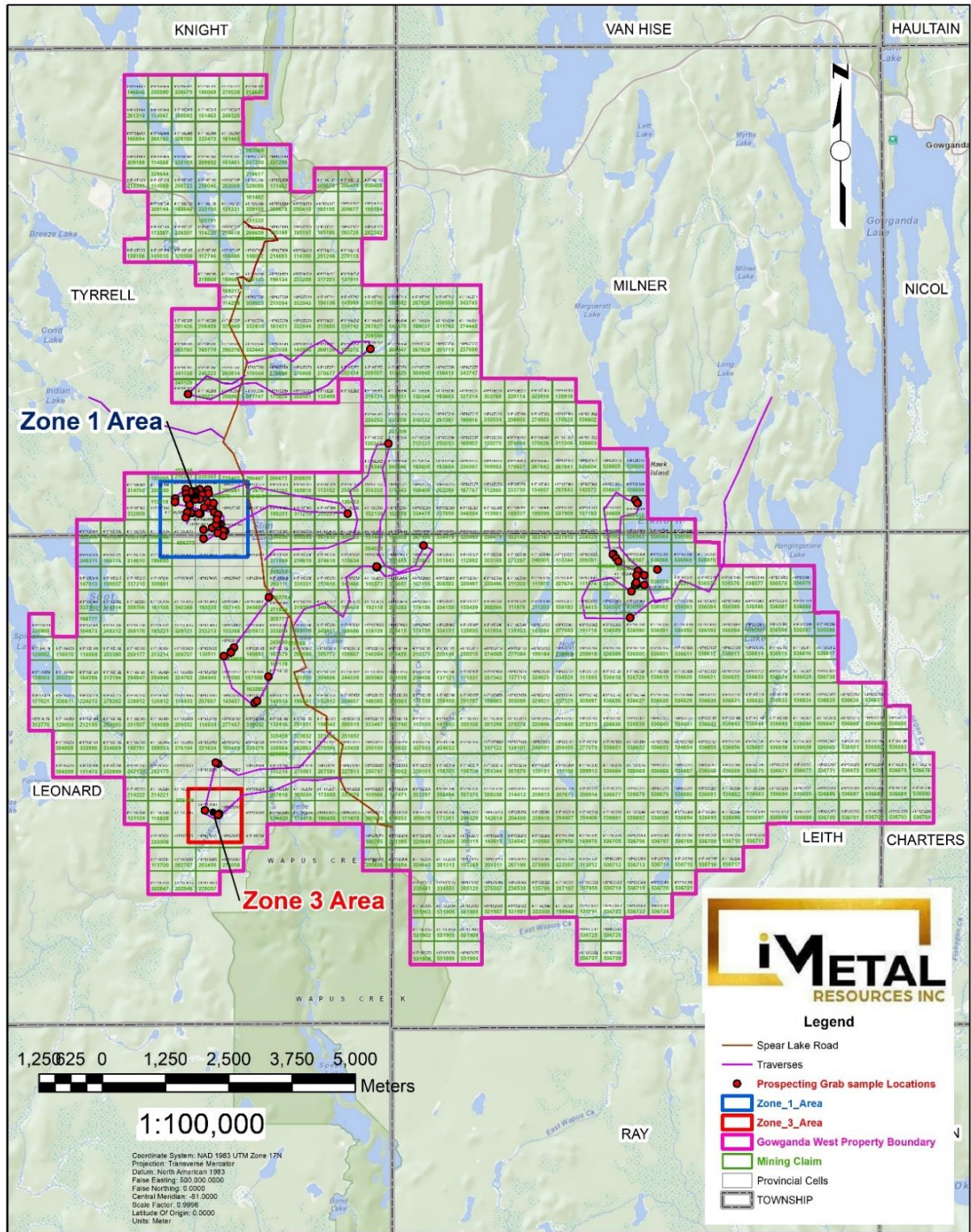
### 6.1 Phase 1 – Prospecting

The first phase to a two-prong approach to the 2021 field program was conducted between April 24 and May 21 was aimed at following up on favorable anomalous and high-grade grab samples collected from previously completed field investigation and to further delineate Phase 2 Stripping and channel sampling locations. *See Figure 6.1.1 Prospecting Traverses and Figure 6.1.2. Prospecting Grab Sample Locations*

A total of 120 grab samples were collected and shipped to ALS Canada laboratory located in Timmins, Ontario for analysis. Of the 120 samples analyzed 26 assays returned anomalous values between 0.167 to 0.99 Au g/t with several higher grade results between 1.1 to 67.9 Au g/t. The most notable results were received in previously identified Areas Zone 1 and Zone 3 which confirmed and augmented their mineralization significance within the Gowganda West Property.

Prospecting highlights are located in Table 6.1 with complete list of all sample collected and accompanying analysis certifications located in appendix.

# Figure 6.1.1 Prospecting Traverses



# Figure 6.1.2 Prospecting Grab Sample Locations

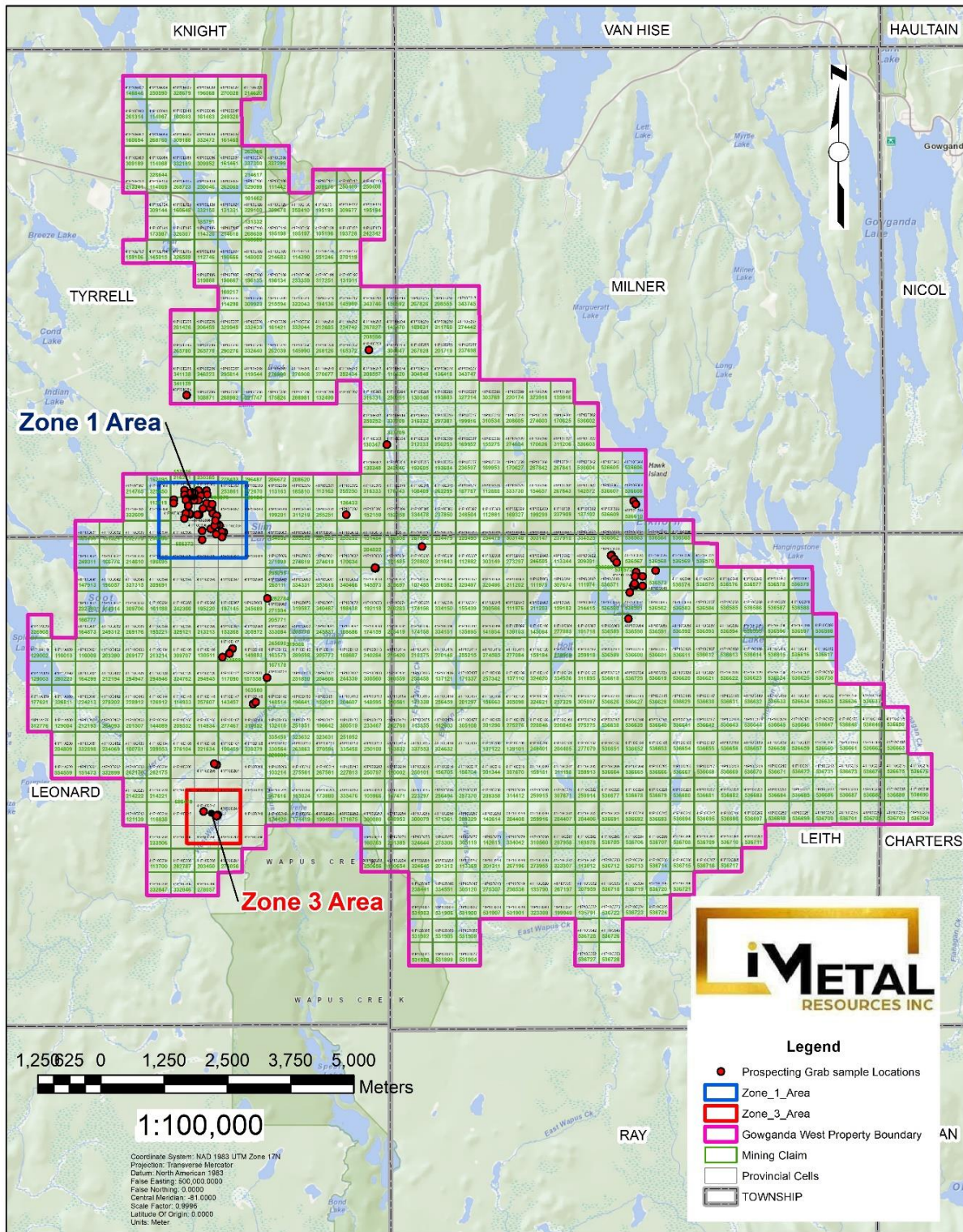
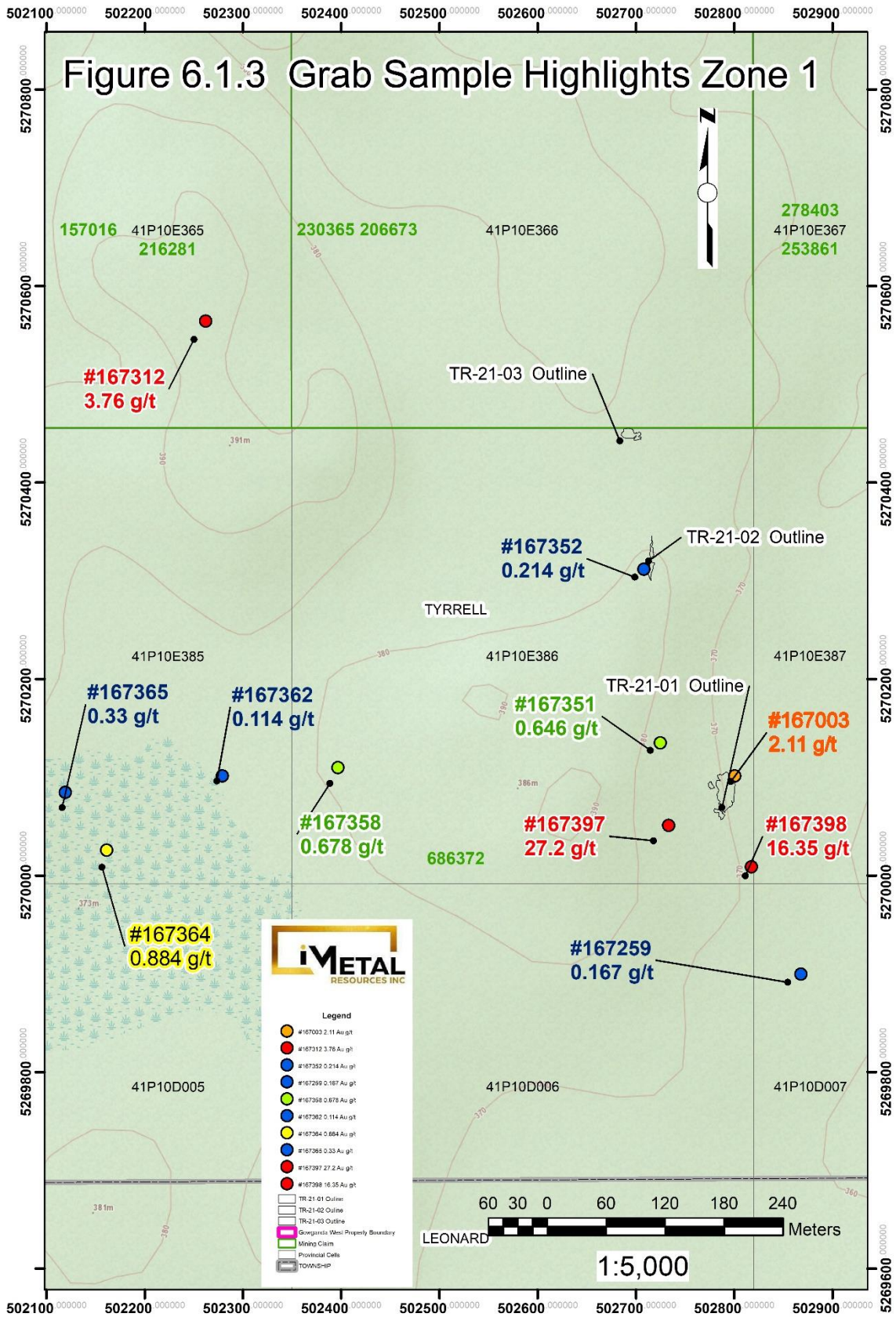


Table 6.1 Prospecting Highlights

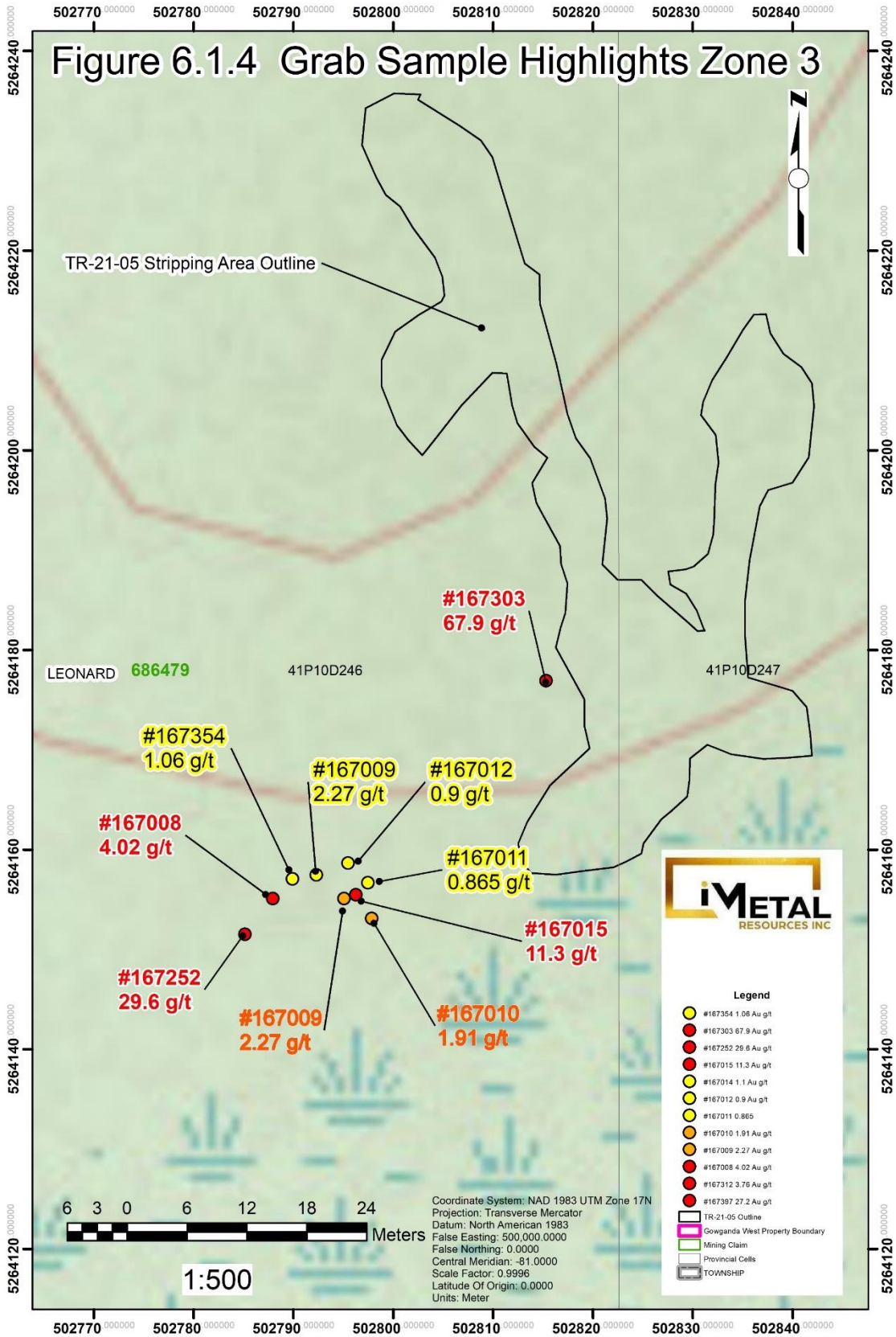
Sample ID	Easting	Northing	Sampler	Cell#	Claim	Twp	Certificate	Au (g/t)
167003	502797	5270089	A Pleson	41P10E386	686372	Tyrrell	TB21117686	2.11
167005	510591	5269303	A Pleson	41P10C023	536566	Leith	TB21117686	0.615
167008	502788	5264155	A Pleson	41P10D246	686479	Leonard	TB21117686	4.02
167009	502796	5264156	A Pleson	41P10D246	686479	Leonard	TB21117686	2.27
167010	502796	5264156	A Pleson	41P10D246	686479	Leonard	TB21117686	1.91
167011	502796	5264156	A Pleson	41P10D246	686479	Leonard	TB21117686	0.865
167012	502796	5264156	A Pleson	41P10D246	686479	Leonard	TB21117686	0.9
167014	502796	5264156	A Pleson	41P10D246	686479	Leonard	TB21117686	1.1
167015	502796	5264156	A Pleson	41P10D246	686479	Leonard	TB21117686	11.3
167016	502796	5264156	A Pleson	41P10D246	686479	Leonard	TB21117686	0.552
167252	502785	5264151	Crew B	41P10D246	686479	Leonard	TB21117682	29.6
167259	502843	5269902	Crew B	41P10D007	686372	Tyrrell	TB21117682	0.167
167266	505939	5269058	Crew B	41P10D053	145573	Leonard	TB21117682	0.809
167301	502537	5264244	Crew A	41P10D246	686479	Leonard	TB21117682	0.99
167303	502815	5264177	Crew A	41P10D246	686479	Leonard	TB21117682	67.9
167312	502263	5270548	Crew A	41P10E365	216281	Tyrrell	TB21117682	3.76
167351	502718	5270135	A. Pleson	41P10E386	686372	Tyrrell	TB21117686	0.646
167352	502703	5270317	A. Pleson	41P10E386	686372	Tyrrell	TB21117686	0.214
167354	502790	5264157	A. Pleson	41P10D246	686479	Leonard	TB21117686	1.06
167358	502411	5270112	A. Pleson	41P10E386	686372	Tyrrell	TB21117686	0.678
167362	502254	5270131	A. Pleson	41P10E385	686372	Tyrrell	TB21117686	0.114
167364	502155	5270034	A. Pleson	41P10E385	686372	Tyrrell	TB21117682	0.884
167365	502155	5270034	A. Pleson	41P10E385	686372	Tyrrell	TB21117682	0.33
167389	505925	5269066	A. Pleson	41P10D053	145573	Leonard	TB21117682	0.971
167397	502793	5270090	A. Pleson	41P10E386	686372	Tyrrell	TB21117682	27.2
167398	502788	5270090	A. Pleson	41P10E386	686372	Tyrrell	TB21117682	16.35

# Figure 6.1.3 Grab Sample Highlights Zone 1

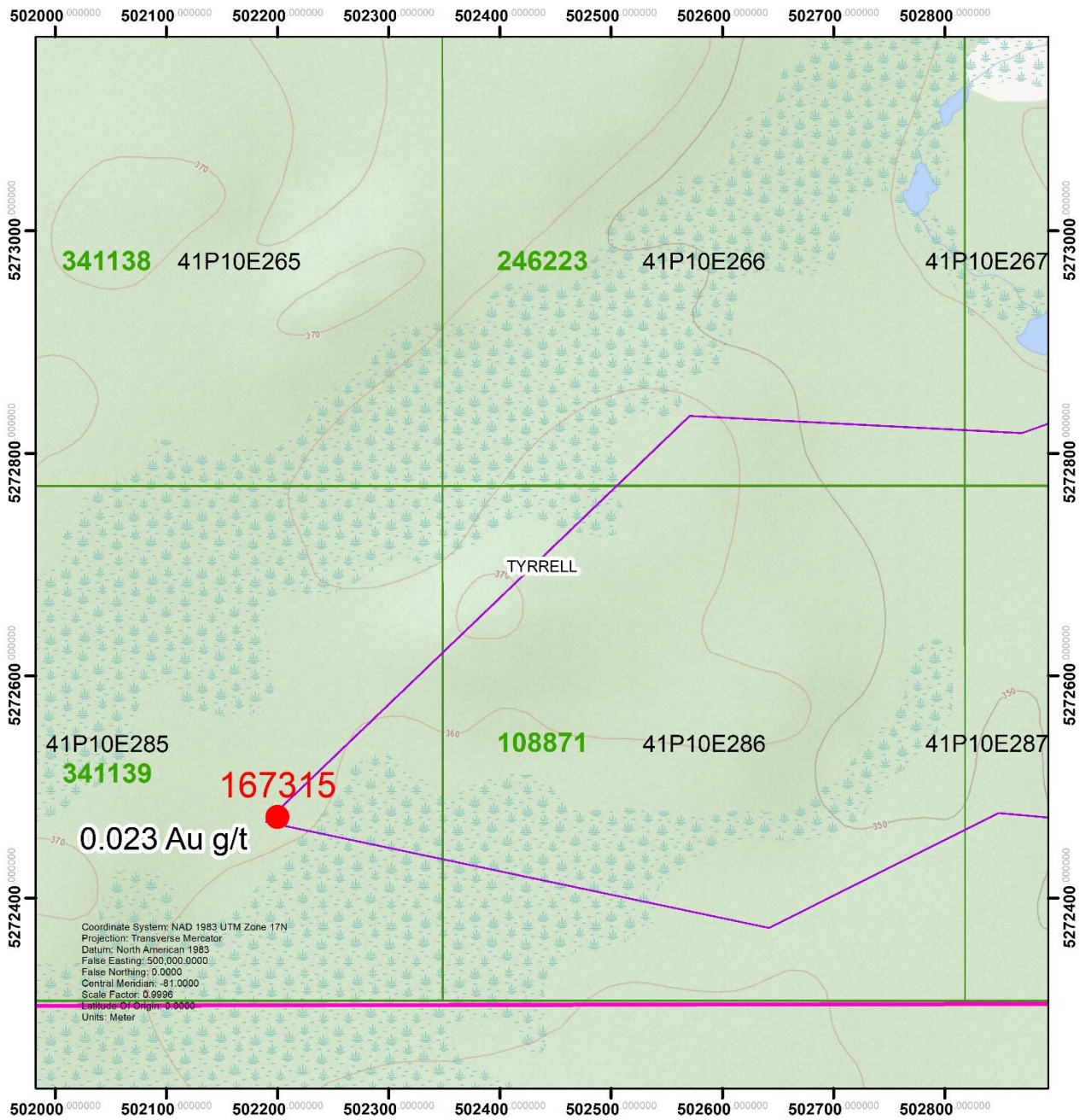




# Figure 6.1.4 Grab Sample Highlights Zone 3



# Figure 6.1.4 Propsecting Grab Samples



Coordinate System: NAD 1983 UTM Zone 17N  
 Projection: Transverse Mercator  
 Datum: North American 1983  
 False Easting: 500,000.0000  
 False Northing: 0.0000  
 Central Meridian: -81.0000  
 Scale Factor: 0.9996  
 Latitude Of Origin: 0.0000  
 Units: Meter



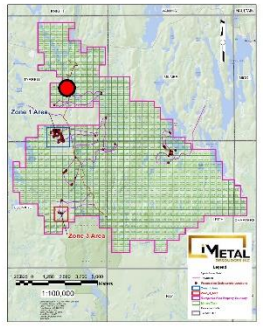
1:5,000

### Legend

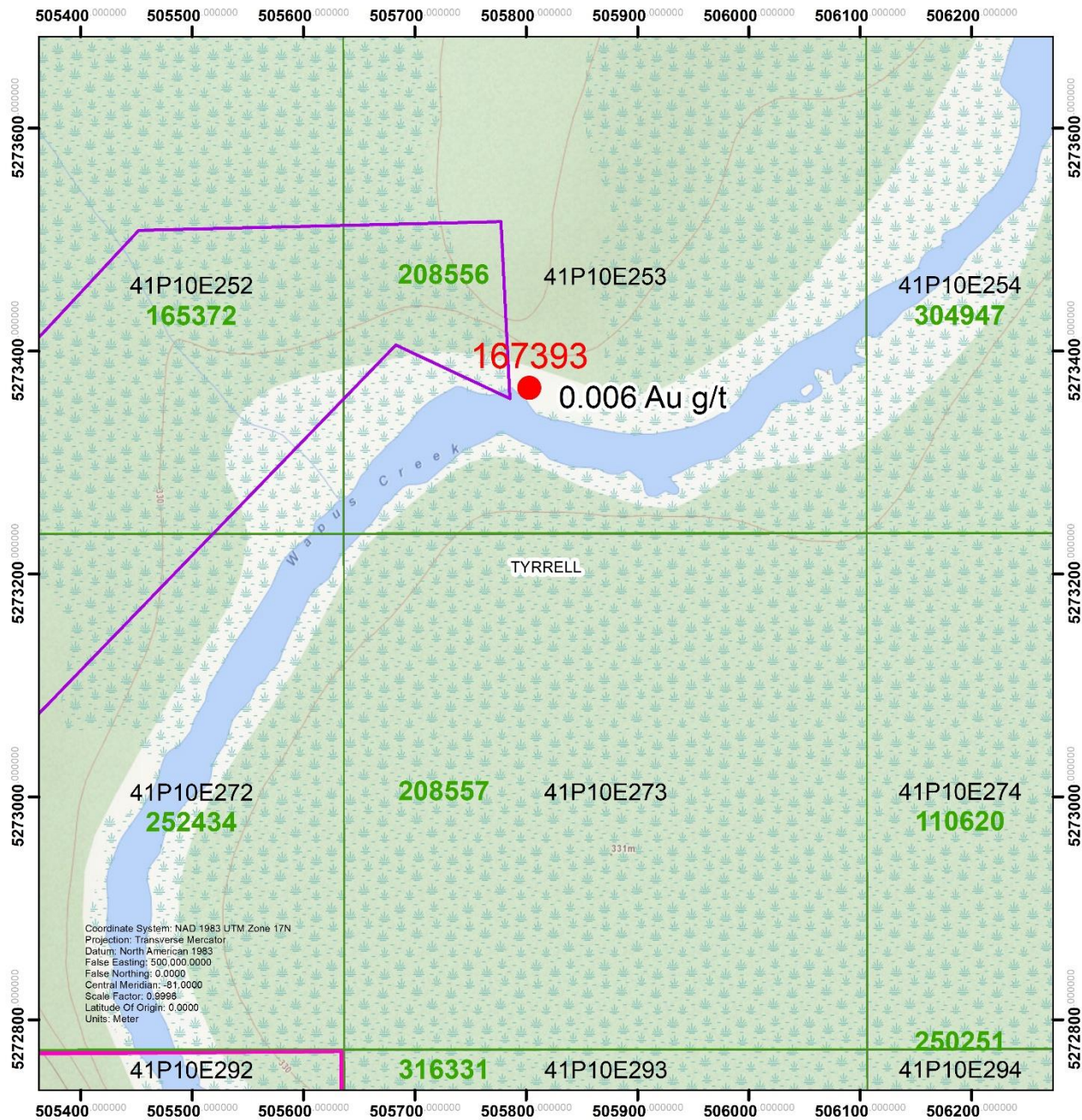
- Traverses
- Prospecting Grab sample Locations
- Gowganda West Property Boundary
- Mining Claim
- Provincial Cells
- TOWNSHIP



Figure 6.1.1 Prospecting Traverses



# Figure 6.1.5 Propsecting Grab Samples



Coordinate System: NAD 1983 UTM Zone 17N  
 Projection: Transverse Mercator  
 Datum: North American 1983  
 False Easting: 500,000.0000  
 False Northing: 0.0000  
 Central Meridian: -81.0000  
 Scale Factor: 0.9996  
 Latitude Of Origin: 0.0000  
 Units: Meter

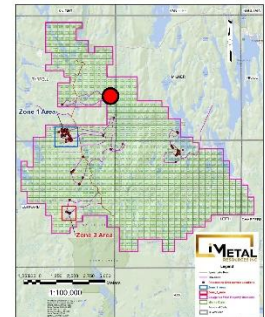


1:5,000

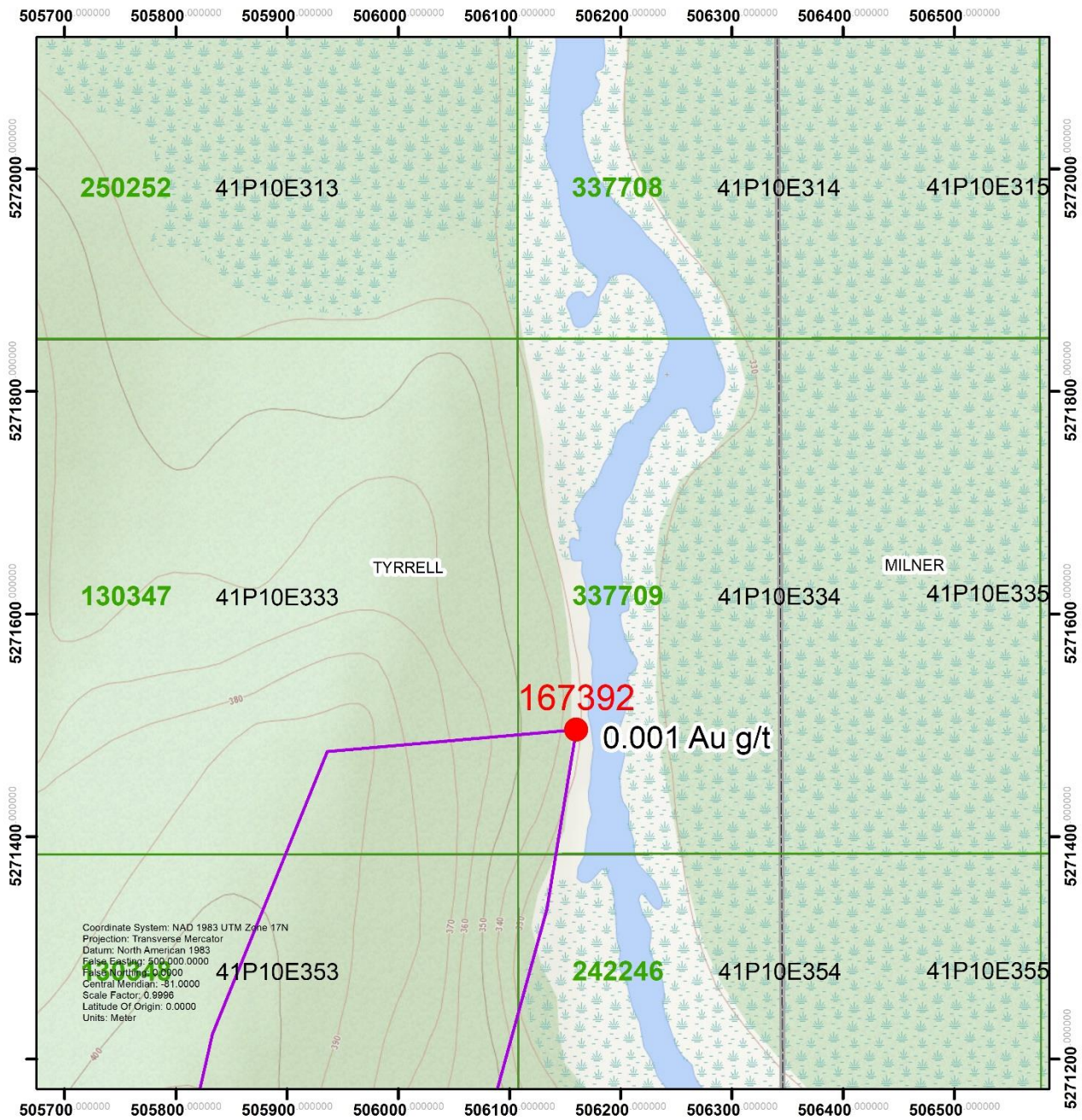
- Legend**
- Traverses
  - Prospecting Grab sample Locations
  - Gowganda West Property Boundary
  - Mining Claim
  - Provincial Cells
  - TOWNSHIP



Figure 6.1.1 Prospecting Traverses



# Figure 6.1.6 Propsecting Grab Samples



Coordinate System: NAD 1983 UTM Zone 17N  
 Projection: Transverse Mercator  
 Datum: North American 1983  
 False Easting: 500,000.0000  
 False Northing: 100,000.0000  
 Central Meridian: -81.0000  
 Scale Factor: 0.9996  
 Latitude Of Origin: 0.0000  
 Units: Meter



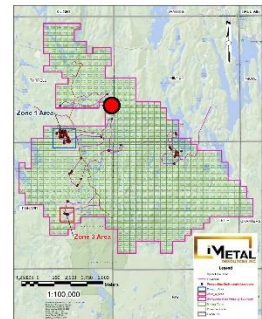
1:5,000

**Legend**

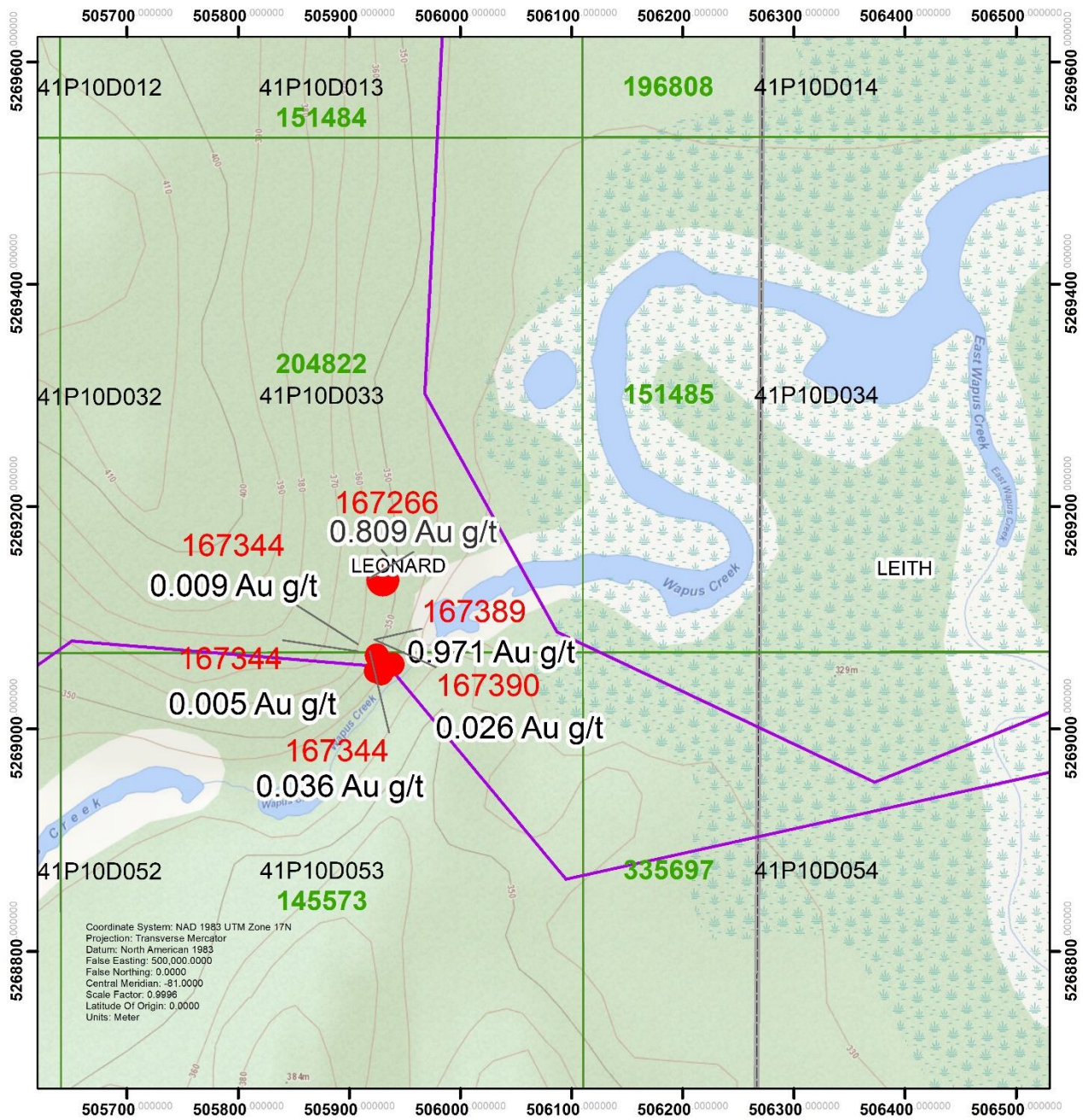
- Traverses
- Prospecting Grab sample Locations
- Gowganda West Property Boundary
- Mining Claim
- Provincial Cells
- TOWNSHIP



Figure 6.1.1 Prospecting Traverses



# Figure 6.1.7 Propsecting Grab Samples



Coordinate System: NAD 1983 UTM Zone 17N  
 Projection: Transverse Mercator  
 Datum: North American 1983  
 False Easting: 500,000.0000  
 False Northing: 0.0000  
 Central Meridian: -81.0000  
 Scale Factor: 0.9996  
 Latitude Of Origin: 0.0000  
 Units: Meter



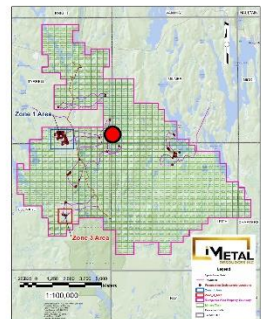
1:5,000

### Legend

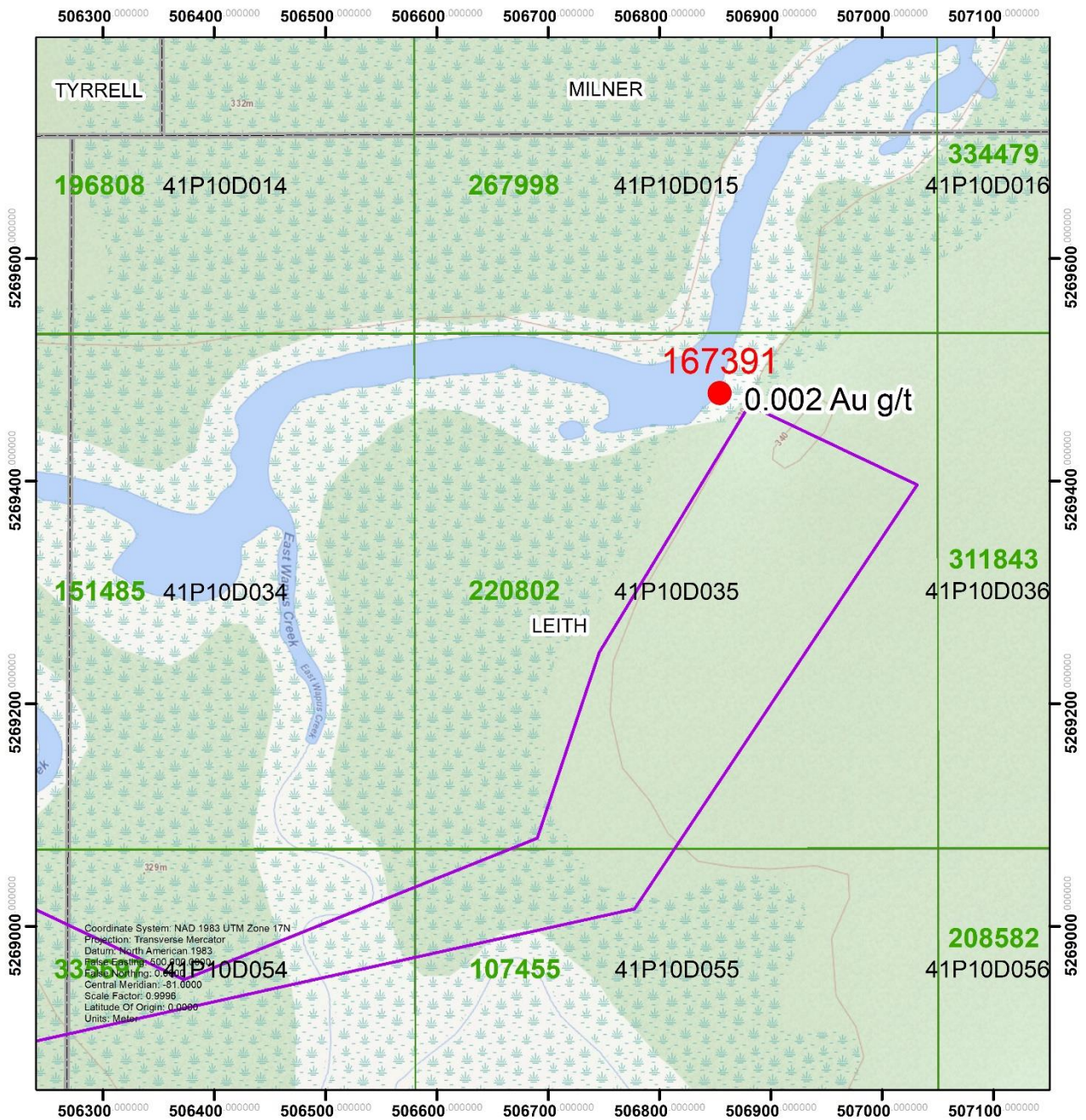
- Traverses
- Prospecting Grab sample Locations
- Gowganda West Property Boundary
- Mining Claim
- Provincial Cells
- TOWNSHIP



Figure 6.1.1 Prospecting Traverses



# Figure 6.1.8 Propsecting Grab Samples

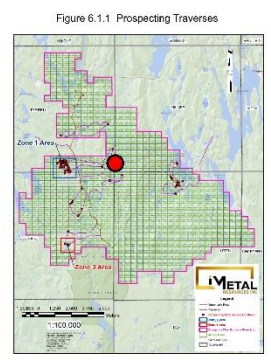


Coordinate System: NAD 1983 UTM Zone 17N  
 Projection: Transverse Mercator  
 Datum: North American 1983  
 False Easting: 500,000.0000  
 False Northing: 0.0000  
 Central Meridian: -81.0000  
 Scale Factor: 0.9996  
 Latitude Of Origin: 0.0000  
 Units: Meter

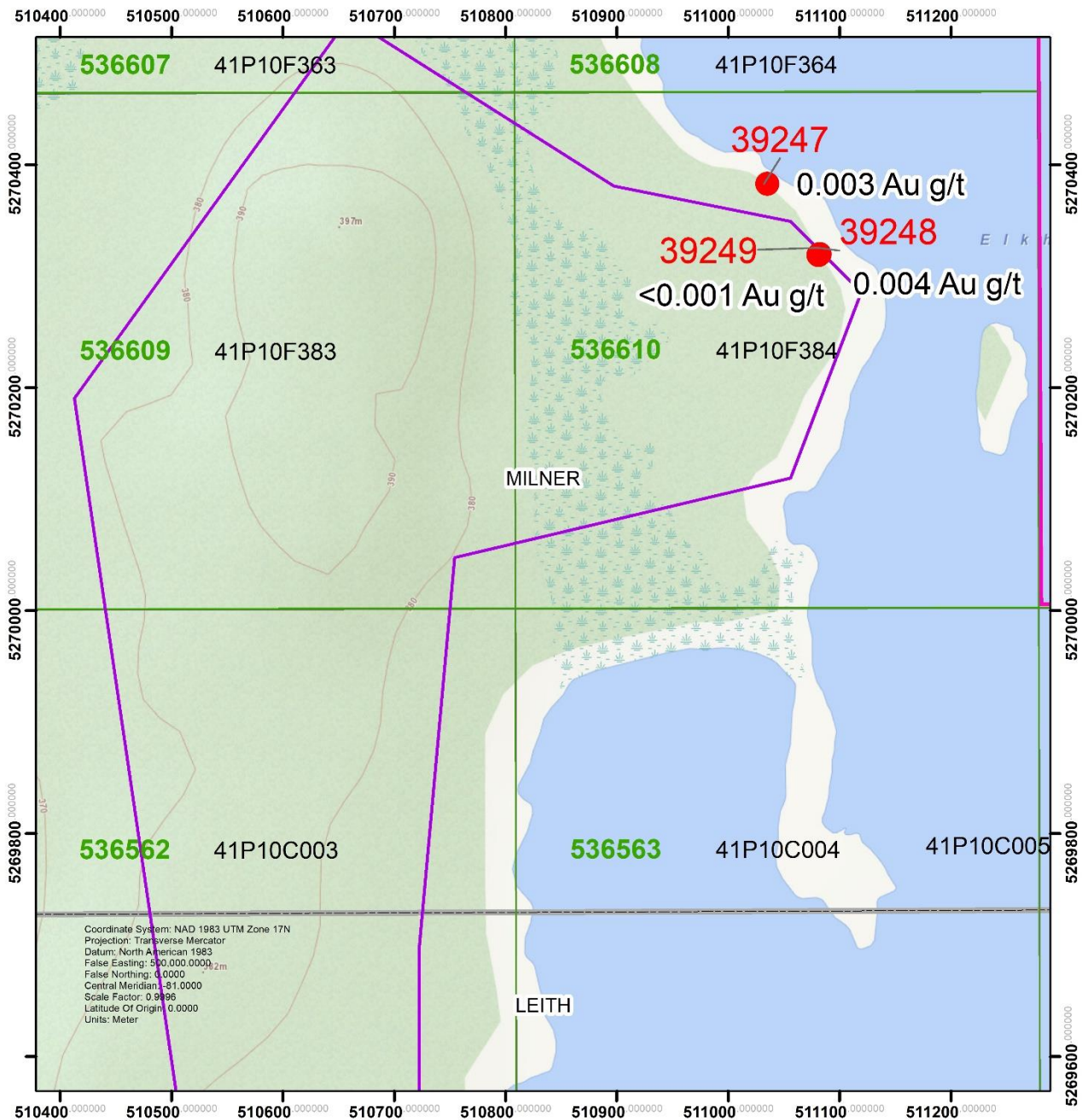


1:5,000

- Legend**
- Traverses
  - Prospecting Grab sample Locations
  - Gowganda West Property Boundary
  - Mining Claim
  - Provincial Cells
  - TOWNSHIP



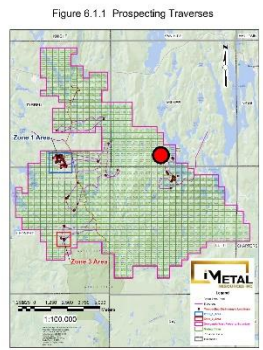
# Figure 6.1.9 Propsecting Grab Samples



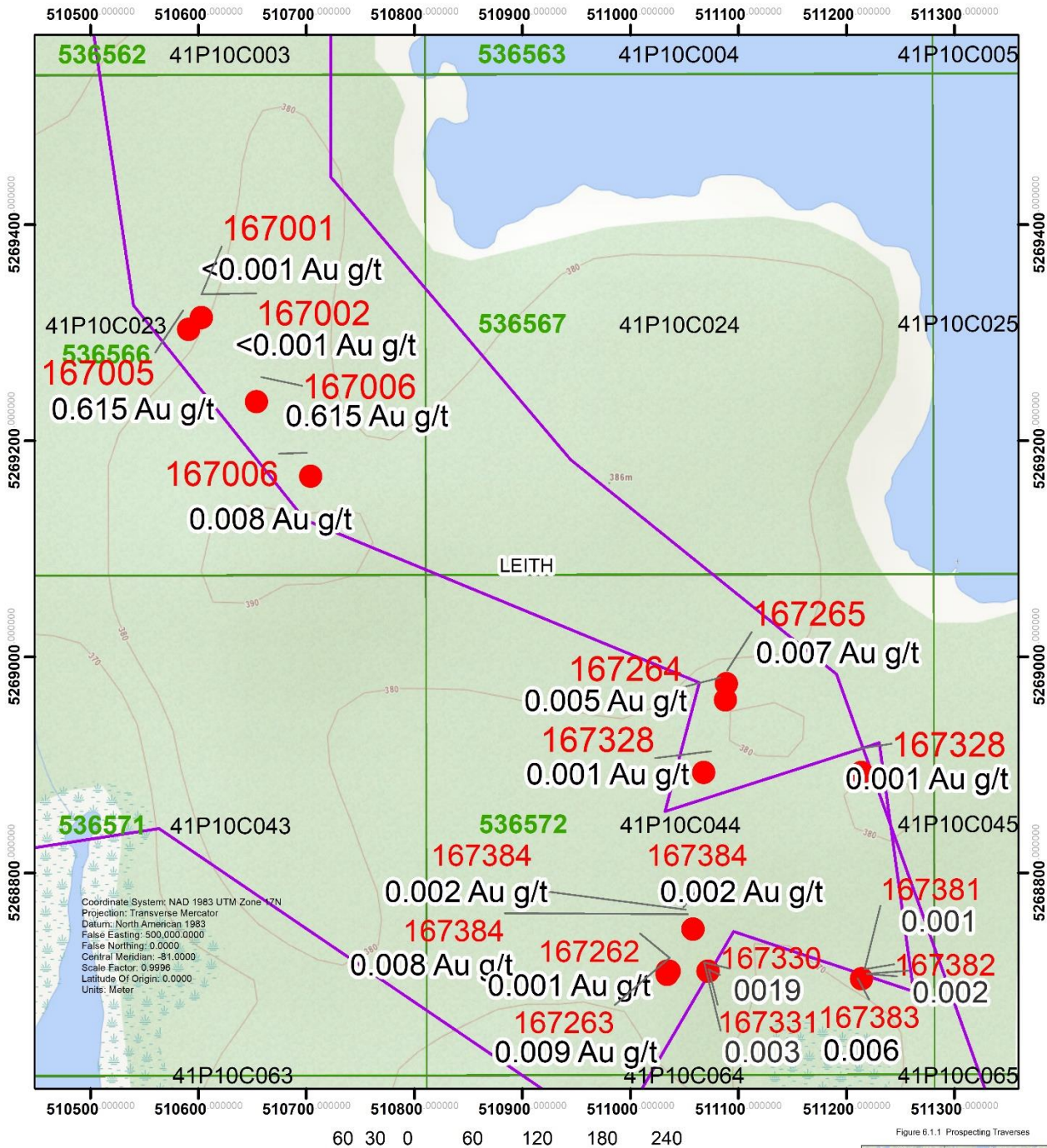
1:5,000

**Legend**

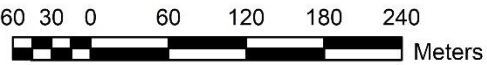
- Traverses
- Prospecting Grab sample Locations
- Gowganda West Property Boundary
- Mining Claim
- Provincial Cells
- TOWNSHIP



# Figure 6.1.10 Propsecting Grab Samples



Coordinate System: NAD 1983 UTM Zone 17N  
 Projection: Transverse Mercator  
 Datum: North American 1983  
 False Easting: 500,000.0000  
 False Northing: 0.0000  
 Central Meridian: -81.0000  
 Scale Factor: 0.9996  
 Latitude Of Origin: 0.0000  
 Units: Meter



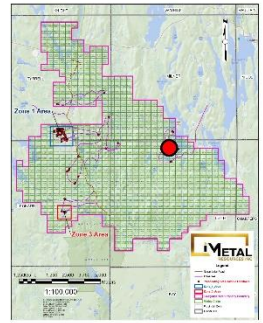
### Legend

- Traverses
- Prospecting Grab sample Locations
- Gowganda West Property Boundary
- Mining Claim
- Provincial Cells
- TOWNSHIP

1:5,000

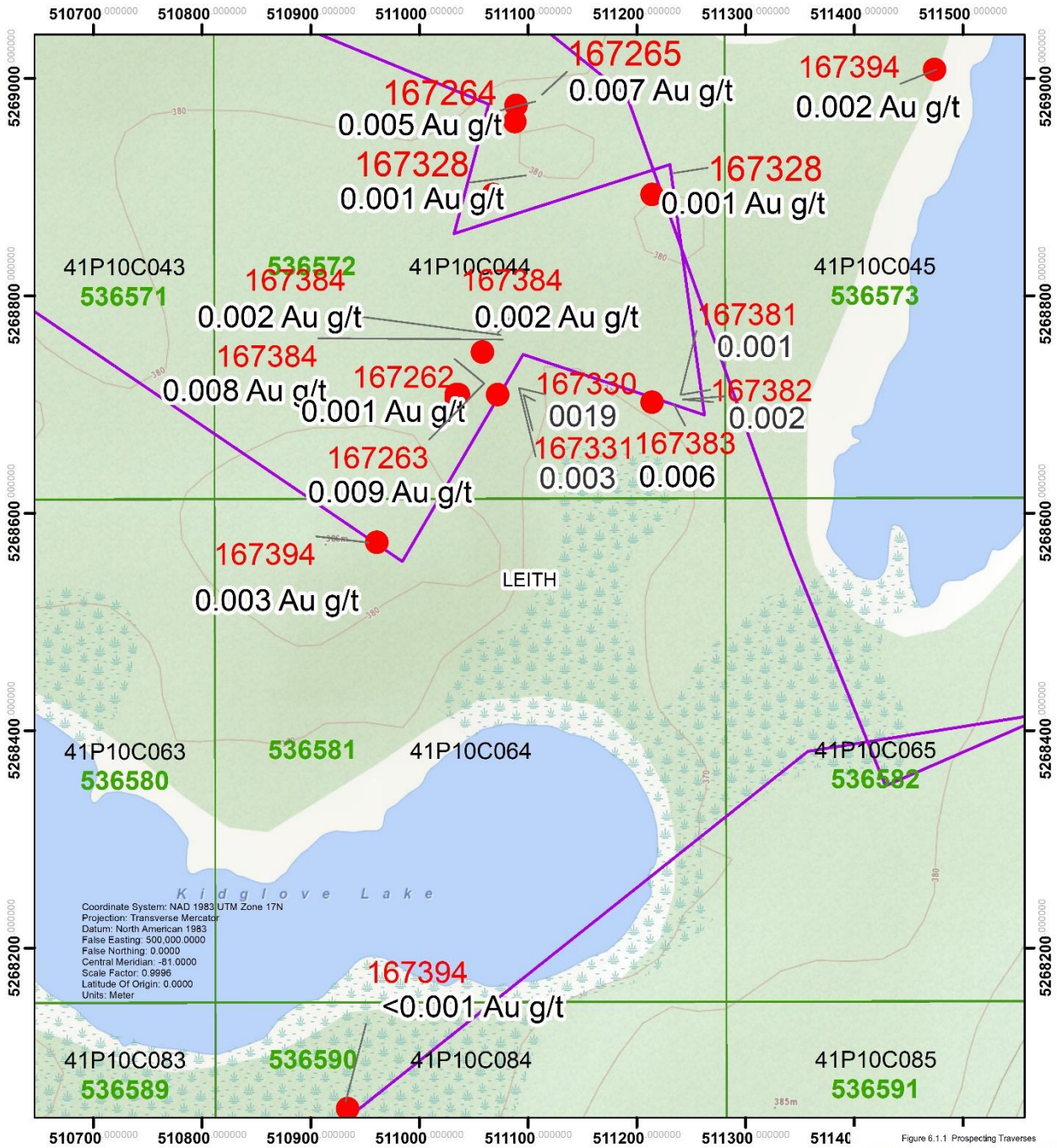


Figure 6.1.1 Prospecting Traverses





# Figure 6.1.11 Propsecting Grab Samples

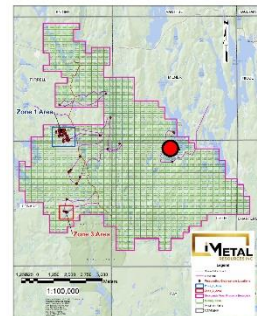


### Legend

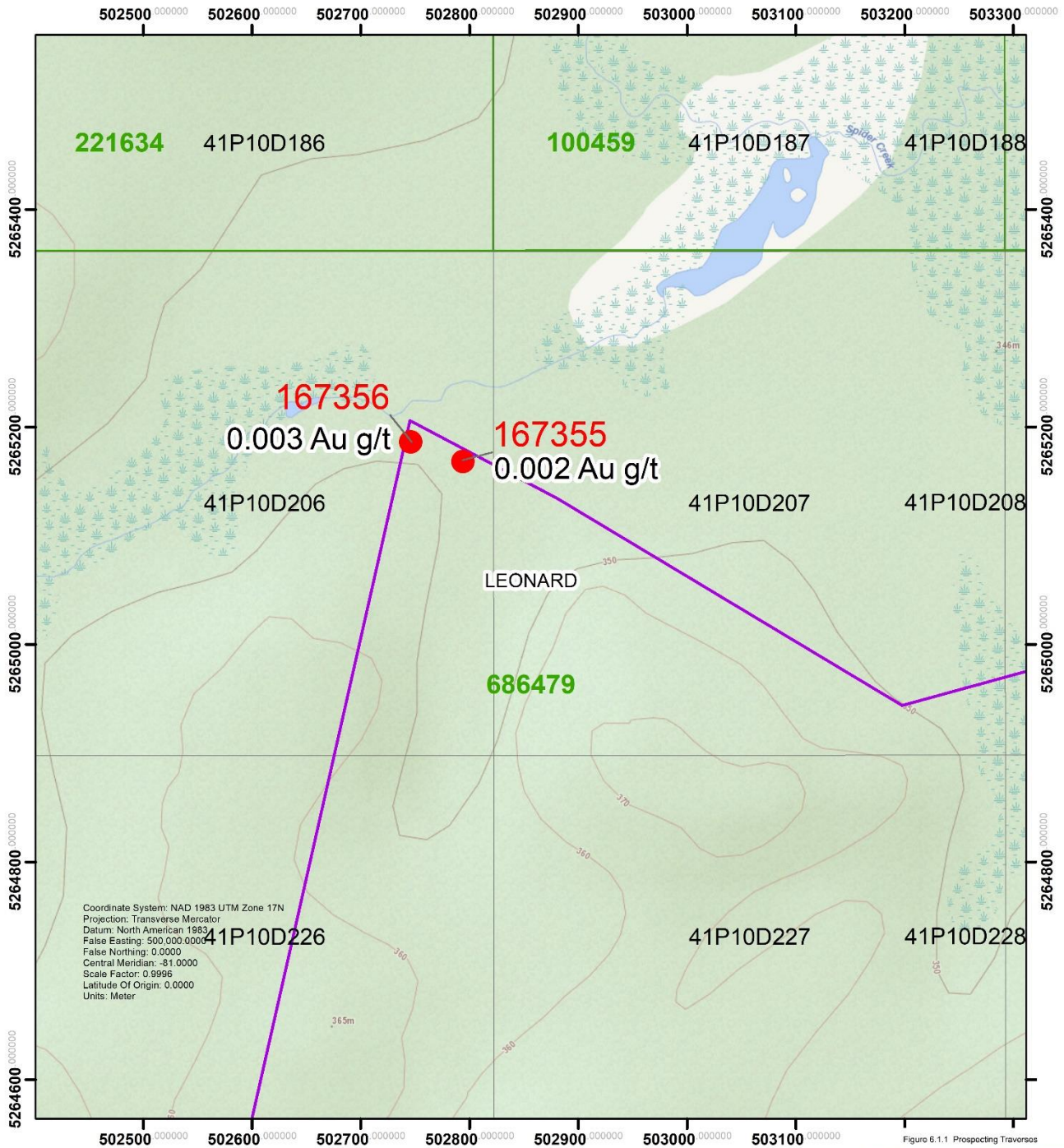
- Traverses
- Propsecting Grab sample Locations
- Gowganda West Property Boundary
- Mining Claim
- Provincial Cells
- TOWNSHIP



Figure 6.1.1 Propsecting Traverses



# Figure 6.1.12 Propsecting Grab Samples

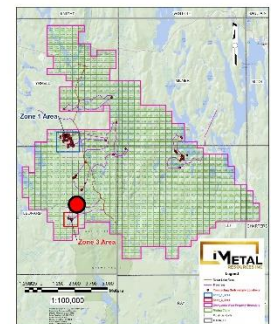


### Legend

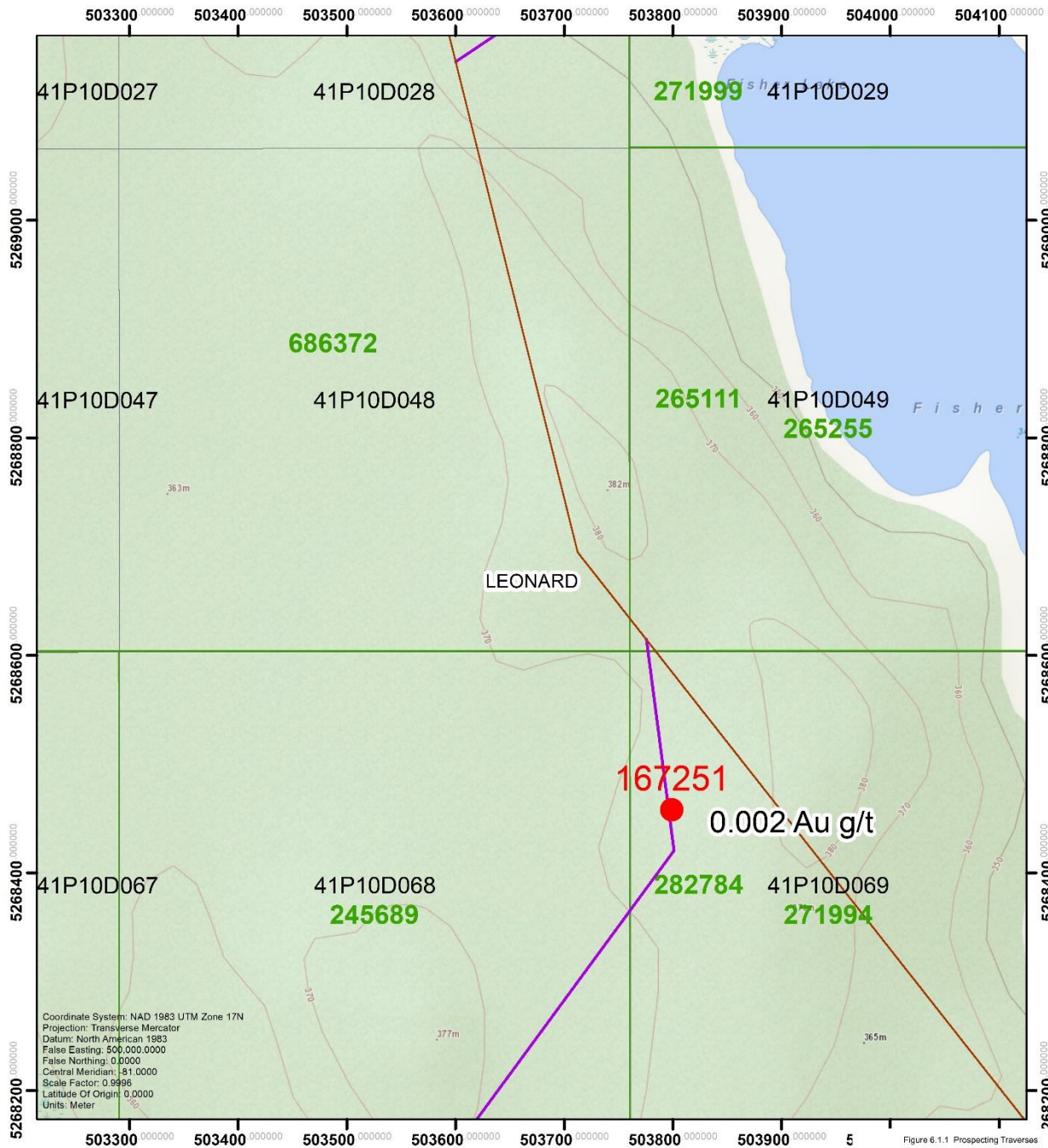
- Traverses
- Prospecting Grab sample Locations
- Gowganda West Property Boundary
- Mining Claim
- Provincial Cells
- TOWNSHIP



Figure 6.1.1 Prospecting Traverses

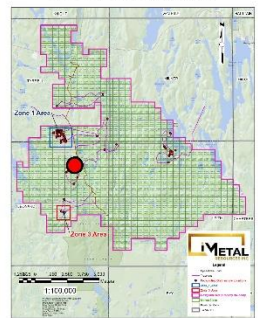


# Figure 6.1.13 Propsecting Grab Samples

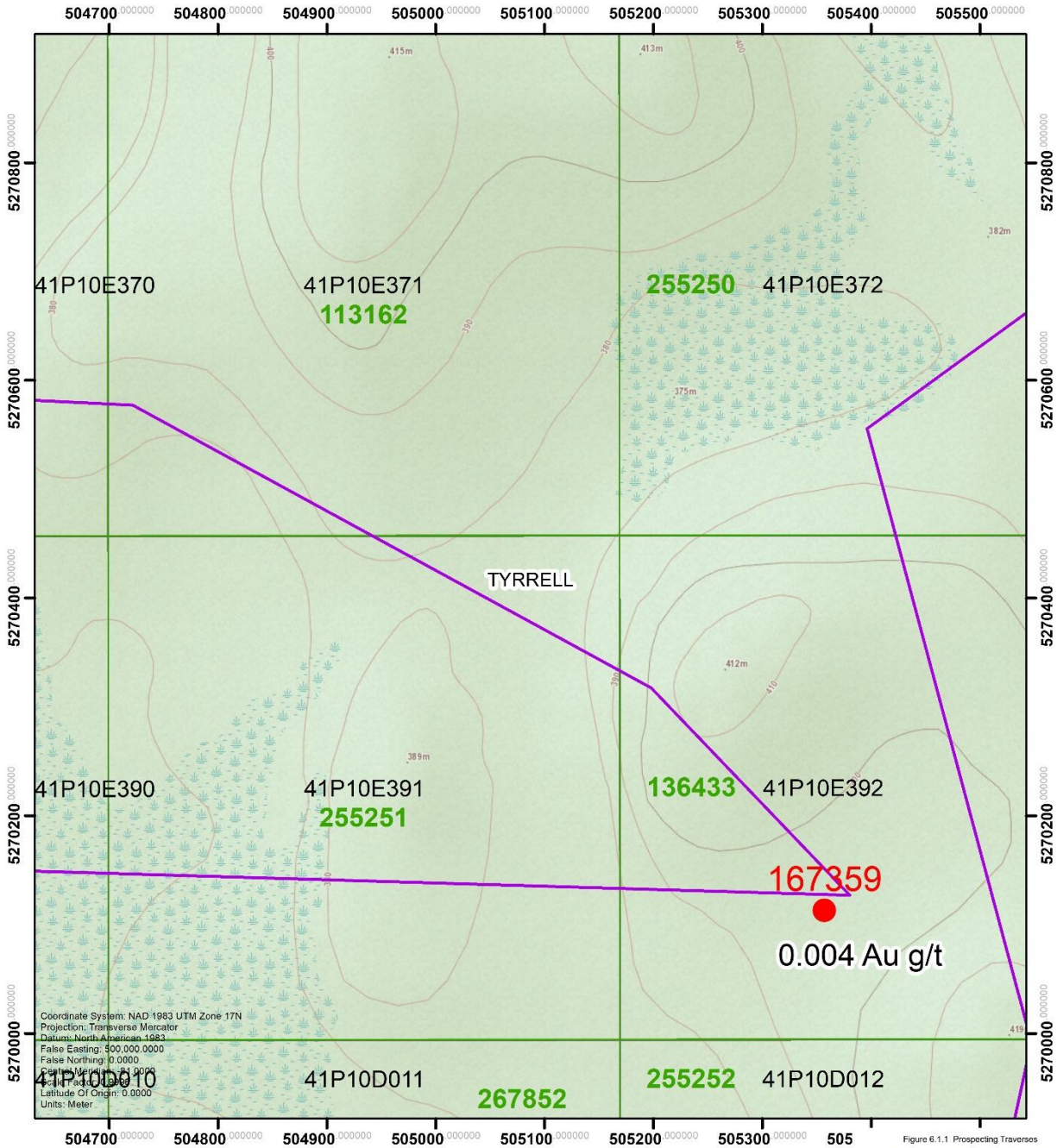


### Legend

- Traverses
- Propsecting Grab sample Locations
- Gowganda West Property Boundary
- Mining Claim
- Provincial Cells
- TOWNSHIP

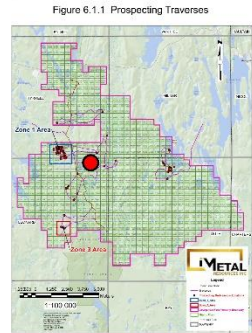


# Figure 6.1.14 Propsecting Grab Samples



### Legend

- Traverses
- Prospecting Grab sample Locations
- Gowganda West Property Boundary
- Mining Claim
- Provincial Cells
- TOWNSHIP



## 7.0 Conclusions and Recommendations

The 2021 Phase one field program proved to achieve the planned objective. The prospecting was successful in both following-up with favorable grab sampling conducted in the 2020 prospecting activities and previous diamond drilling, further assisting in delineation four areas of interest for the second phase mechanical stripping and channel sampling. Zone 1 and Zone 3 grab samples, both returned very favorable and encouraging anomalous to high grade results between 0.114 to 67 .8 Au g/t. The remaining areas investigated only returned background to low anomalous assays, are for now identified as lower priority targets for follow-up.

This latest completed work further validates the mineralization potential of IMetals Gowganda West Property, thus warranting proceeding with Phase two program consisting of stripping 5 areas covering Zone 1 and Zone 3 with subsequent mapping and channel sampling conducted.

Secondary focus should also be given in the area of Zone 3 by means of further geophysical methods such as IP and ground mag surveys which potentially could identify targets not readily detectable by previous surface observation to date. This approach should also be considered with potentially diamond drilling in the area of Elkhorn Lake.

# References

## Reports

McIlwaine, W.H. 1971 Ontario Department of Mines and Northern Affairs Geological Report 89, Geology of Leith, Charters and Corkhill Townships, District of Timiskaming

Putman, J.S. 1971 GR # 152 – Report

Carter, M.W. 1977 Ontario Division of Mines, Geoscience Report 146, Geology of Fawcett and Leonard Townships, Districts of Sudbury, and Timiskaming

Carter, M.W. 1977 Ontario Division of Mines, Geoscience Report 152, Geology of Macmurchy and Tyrrell Townships, Districts of Sudbury, and Timiskaming

McIlwaine, W.H. 1978 OGS Report 175 Geology of the Gowganda Lake-Miller Lake Silver Area, District of Timiskaming

## Maps

OGS Geology Map 2348 for Van Hise and Milner Townships

OGS 1990 Geological Data Inventory 508 Folio Map #2365

Putman, J.S. 1971 GR # 152 – Map #2365  
OGS Map P.280 and Map 2359.

# Appendix

## Appendix A– Statement of Qualifications

### Statement of Qualifications

I, Brian Madill, of 142 Carter Ave. Kirkland Lake, Ontario, do hereby certify that:

1. I am a Prospector/Geological/Geophysical Technician and have been practicing my profession for the past 43 years.
2. I am a graduate of Cambrian College, Sudbury, Ontario having received a Geological Engineering Technician diploma in 1979.
3. My knowledge of the property described herein was obtained by fieldwork and documentation.
4. I do not have or expect to receive any interest in the properties that form the basis of this report.
5. I am qualified to author this report.

Respectfully,



Brian H. Madill

## Statement of Qualifications

I, Mark Rochefort, of 3014 Bancroft Dr., Sudbury, Ontario, do hereby certify that:

1. I am a graduate of Cambrian College, Sudbury, Ontario having received my Geological Engineering Technician Diploma in 1989
2. I have been practicing my profession for over 30 years with extensive experience throughout the complete exploration and mining cycle. Including mine closure and reclamation. With professional registration in progress.
3. My knowledge of the property described herein was obtained from public publications and personal involvement in all facets of fieldwork documentation collected.
4. I do not have or expect to receive any interest in the properties that forms the basis of this report.
5. I am qualified to author this report.

Respectfully,

*Mark Rochefort*

Mark B. Rochefort























## Appendix C– Grab Sample List

Sample ID	Easting	Northing	Sampler	Cell#	Claim	Twp	Description	Au (g/t)
167001	510603	5269314	A Pleson	41O10C023	536566	Leith	from cgl/volcanic contact area, mafic volcanic with 5 mm cabonate veinlet	0
167002	510603	5269314	A Pleson	41O10C023	536566	Leith	from weakly oxidized section of jasper IF	0
167003	502797	5270089	A Pleson	41O10C023	536566	Leith	from weakly oxidized section of jasper IF	2.11
167004	502797	5270091	A Pleson	41O10C023	536566	Leith	from weakly oxidized section of jasper IF	0.004
167005	510591	5269303	A Pleson	41O10C023	536566	Leith	from weakly oxidized section of jasper IF	0.615
167006	510654	5269236	A Pleson	41O10C023	536566	Leith	mafic volcanic/chert/jasper weakly brecciated with minor PY	0.001
167007	510704	5269167	A Pleson	41O10C023	536566	Leith	mafic volcanic/chert/jasper weakly brecciated with minor PY	0.008
167008	502788	5264155	A Pleson	41P10D246	686479	Leonard	grey vein, not magnetic within conglomerate, high graded sample, all grey vein material	4.02
167009	502796	5264156	A Pleson	41P10D246	686479	Leonard	grey vein, not magnetic within conglomerate, high graded sample, all grey vein material	2.27
167010	502796	5264156	A Pleson	41P10D246	686479	Leonard	grey vein, not magnetic within conglomerate, high graded sample, all grey vein material	1.91
167011	502796	5264156	A Pleson	41P10D246	686479	Leonard	grey vein, not magnetic within conglomerate, high graded sample, all grey vein material	0.865
167012	502796	5264156	A Pleson	41P10D246	686479	Leonard	grey vein, not magnetic within conglomerate, high graded sample, all grey vein material	0.9
167013	502796	5264156	A Pleson	41P10D246	686479	Leonard	grey vein, not magnetic within conglomerate, high graded sample, all grey vein material	0.011
167014	502796	5264156	A Pleson	41P10D246	686479	Leonard	grey vein, not magnetic within conglomerate, high graded sample, all grey vein material	1.1
167015	502796	5264156	A Pleson	41P10D246	686479	Leonard	grey vein, not magnetic within conglomerate, high graded sample, all grey vein material	11.3
167016	502796	5264156	A Pleson	41P10D246	686479	Leonard	grey vein, not magnetic within conglomerate, high graded sample, all grey vein material	0.552
167251	503799	5268458	Crew B	41P10069	282784	Leonard	angular boulder in area of road work, qtz carb veining with trace CP, PY	0.002
167252	502785	5264151	Crew B	41P10D246	686479	Leonard	angular boulder in area of road work, qtz carb veining with trace CP, PY	29.6
167253	502664	5565117	Crew B	41P10D246	686479	Leonard	angular boulder in area of road work, qtz carb veining with trace CP, PY	0.024
167254	502933	5269764	Crew B	41P10D007	686372	Tyrrell	moderately ankerite altered arenite metased bleached with trace PY	0.004

Sample ID	Easting	Northing	Sampler	Cell#	Claim	Twp	Description	Au (g/t)
167255	502895	5269774	Crew B	41P10D007	686372	Tyrrell	moderately ankerite altered arenite metased bleached with trace PY	0.003
167256	502899	5269669	Crew B	41P10D007	686372	Leonard	moderately ankerite altered arenite metased bleached with trace PY	0.011
167257	502787	5269727	Crew B	41P10D006	686372	Tyrrell	moderately ankerite altered arenite metased bleached with trace PY	0.025
167258	502675	5269834	Crew B	41P10D006	686372	Tyrrell	moderately ankerite altered arenite metased bleached with trace PY	0.015
167259	502843	5269902	Crew B	41P10D007	686372	Tyrrell	moderately ankerite altered arenite metased bleached with trace PY	0.167
167260	502793	5269907	Crew B	41P10D006	686372	Tyrrell	moderately ankerite altered arenite metased bleached with trace PY	0.061
167261	502750	5269894	Crew B	41P10D006	686372	Tyrrell	moderately ankerite altered arenite metased bleached with trace PY	0.004
167262	511036	5268709	Crew B	41P10C044	536572	Leith	beautiful rock, host debatable probably mafic volcanic, strong bleached, silicified, brecciated 4% diss PY	0.001
167263	511034	5268709	Crew B	41P10C044	536572	Leith	beautiful rock, host debatable probably mafic volcanic, strong bleached, silicified, brecciated 4% diss PY	0.009
167264	511088	5268960	Crew B	41P10C044	536572	Leith	beautiful rock, host debatable probably mafic volcanic, strong bleached, silicified, brecciated 4% diss PY	0.005
167265	511089	5268975	Crew B	41P10C044	536572	Leith	beautiful rock, host debatable probably mafic volcanic, strong bleached, silicified, brecciated 4% diss PY	0.007
167266	505939	5269058	Crew B	41P10D053	145573	Leonard	silver showing by Wapus Creek, sample from talus	0.809
167301	502537	5264244	Crew A	41P10D246	686479	Leonard	silver showing by Wapus Creek, sample from talus	0.99
167302	502537	5264244	Crew A	41P10D246	686479	Leonard	silver showing by Wapus Creek, sample from talus	0.006
167303	502815	5264177	Crew A	41P10D246	686479	Leonard	silver showing by Wapus Creek, sample from talus	67.9
167304	502687	5270236	Crew A	41P10E386	686372	Tyrrell	weakly brecciated moderately carb filled fractures in metased with trace PY	0.058
167305	502639	5270272	Crew A	41P10E386	686372	Tyrrell	weakly brecciated moderately carb filled fractures in metased with trace PY	0.017
167306	502664	5270245	Crew A	41P10E386	686372	Tyrrell	weakly brecciated moderately carb filled fractures in metased with trace PY	0.065
167307	502594	5270336	Crew A	41P10E386	686372	Tyrrell	weakly brecciated moderately carb filled fractures in metased with trace PY	0.007

167308	502593	5270587	Crew A	41P10E366	230365	Tyrrell	weakly brecciated moderately ankerite altered metased with trace PY	0.031
Sample ID	Easting	Northing	Sampler	Cell#	Claim	Twp	Description	Au (g/t)
167309	502434	5270590	Crew A	41P10E366	230365	Tyrrell	weak shear? in conglomerate with moderate ankerite alteration trace PY	0.013
167310	502352	5270543	Crew A	41P10E365	230365	Tyrrell	weak shear? in conglomerate with moderate ankerite alteration trace PY	0.007
167311	502311	5270550	Crew A	41P10E365	157016	Tyrrell	strong ankerite alteration in arenite with trace PY	0.004
167312	502263	5270548	Crew A	41P10E365	157016	Tyrrell	strong ankerite alteration in arenite with trace PY	3.76
167313	502158	5270596	Crew A	41P10E365	157016	Tyrrell	strong ankerite alteration in arenite with trace PY	0.015
167314	502158	5270507	Crew A	41P10E365	157016	Tyrrell	strong ankerite alteration in arenite with trace PY	0.027
167315	502200	5272473	Crew A	41P10E285	341139	Tyrrell	weak shear? in conglomerate with moderate ankerite alteration trace PY	0.023
167316	502482	5270482	Crew A	41P10E366	230365	Tyrrell	weak shear? in conglomerate with moderate ankerite alteration trace PY	0.005
167317	502609	5270510	Crew A	41P10E366	230365	Tyrrell	weakly brecciated moderately ankerite altered metased with trace PY	0.04
167318	502524	5270233	Crew A	41P10E386	686372	Tyrrell	weakly brecciated moderately ankerite altered metased with trace PY	0.023
167319	502435	5270396	Crew A	41P10E386	686372	Tyrrell	conglomerate in area of trenching, looking for anomalous gold	0.02
167320	502349	5270394	Crew A	41P10E385	686372	Tyrrell	conglomerate in area of trenching, looking for anomalous gold	0.036
167321	502191	5270425	Crew A	41P10E385	686372	Tyrrell	conglomerate in area of trenching, looking for anomalous gold	0.047
167322	502182	5270399	Crew A	41P10E385	686372	Tyrrell	conglomerate in area of trenching, looking for anomalous gold	0.034
167323	501946	5270407	Crew A	41P10E385	686372	Tyrrell	conglomerate in area of trenching, looking for anomalous gold	0.049
167324	501946	5270407	Crew A	41P10E385	686372	Tyrrell	conglomerate in area of trenching, looking for anomalous gold	0.006
167325	501941	5270341	Crew A	41P10E385	686372	Tyrrell	conglomerate in area of trenching, looking for anomalous gold	0.003
167326	502225	5270285	Crew A	41P10E385	686372	Tyrrell	conglomerate in area of trenching, looking for anomalous gold	0.001
167327	502236	5270284	Crew A	41P10E385	686372	Tyrrell	conglomerate in area of trenching, looking for anomalous gold	0.011
167328	511214	5268893	Crew A	41P10C044	536572	Leith	PY infused 4% mafic volcanic, weakly sil	0.001
167329	511068	5268893	Crew A	41P10C044	536572	Leith	PY infused 4% mafic volcanic, weakly sil	0.001
167330	511072	5268709	Crew A	41P10C044	536572	Leith	mafic volcanic host in weakly sheared zone with 15% carb veining and pockets of carb and frg diss PY	0.019

Sample ID	Easting	Northing	Sampler	Cell#	Claim	Twp	Description	Au (g/t)
167331	511072	5268709	Crew A	41P10C044	536572	Leith	mafic volcanic host in weakly sheared zone with 15% carb veining and pockets of carb and frg diss PY	0.003
167332	511072	5268709	Crew A	41P10C044	536572	Leith	mafic volcanic host in weakly sheared zone with 15% carb veining and pockets of carb and frg diss PY	0
167333	510934	5268052	Crew A	41P10C044	536572	Leith	mafic volcanic host in weakly sheared zone with 15% carb veining and pockets of carb and frg diss PY	0
167334	505924	5269052	Crew A	41P10D053	145573	Leonard	silver showing by Wapus Creek, sample from talus	0.009
167335	505929	5269050	Crew A	41P10D053	145573	Leonard	silver showing by Wapus Creek, sample from talus	0.005
167351	502718	5270135	A. Pleson	41P10E386	686372	Tyrrell	angular boulder in area of road work, qtz carb veining with trace CP, PY	0.646
167352	502703	5270317	A. Pleson	41P10E386	686372	Tyrrell	angular boulder in area of road work, qtz carb veining with trace CP, PY	0.214
167353	502797	5264157	A. Pleson	41P10D246	686479	Leonard	strongly ankerite altered conglomerate, minor diss PY	0.001
167354	502790	5264157	A. Pleson	41P10D246	686479	Leonard	strongly ankerite altered conglomerate, minor diss PY	1.06
167355	502794	5265168	A. Pleson	41P10D246	686479	Leonard	strongly ankerite altered conglomerate, minor diss PY	0.002
167356	502746	5265186	A. Pleson	41P10D006	686479	Leonard	strongly ankerite altered conglomerate, minor diss PY	0.003
167357	502445	5270113	A. Pleson	41P10E386	686372	Tyrrell	weakly brecciated moderately ankerite altered metased with carb veining trace PY	0.002
167358	502411	5270112	A. Pleson	41P10E386	686372	Tyrrell	weakly brecciated moderately ankerite altered metased with carb veining trace PY	0.678
167359	505357	5270113	A. Pleson	41P10E386	686372	Tyrrell	sample of cgr gabbro/diabase for reference, Pt analysis	0.004
167361	502273	5270120	A. Pleson	41P10E385	686372	Tyrrell	weakly brecciated moderately ankerite altered metased with carb veining trace PY	0.017
167362	502254	5270131	A. Pleson	41P10E385	686372	Tyrrell	weakly brecciated moderately ankerite altered metased with carb veining trace PY	0.114
167363	502185	5270136	A. Pleson	41P10E385	686372	Tyrrell	weakly brecciated moderately ankerite altered metased with carb veining trace PY	0.006
167364	502155	5270034	A. Pleson	41P10E385	686372	Tyrrell	weakly brecciated moderately ankerite altered metased with carb veining trace PY	0.884
167365	502155	5270034	A. Pleson	41P10E385	686372	Tyrrell	weakly brecciated moderately ankerite altered metased with carb veining trace PY	0.33
167366	502505	5269795	A. Pleson	41P10E385	686372	Tyrrell	weakly brecciated moderately ankerite altered metased with carb veining trace PY	0.007
167367	502504	5269615	A. Pleson	41P10D006	686372	Leonard	meta sed with 1-2% dis PY	0.003
167368	502504	5269615	A. Pleson	41P10D006	686372	Leonard	meta sed with 1-2% dis PY	0.021

Sample ID	Easting	Northing	Sampler	Cell#	Claim	Twp	Description	Au (g/t)
167369	503105	5267467	A. Pleson	41P10D107	149884	Leonard	strongly ankerite altered arenite with minor diss PY, pronounced alteration along a small ridge	0.005
167370	503049	5267379	A. Pleson	41P10D107	149884	Leonard	strongly ankerite altered arenite with minor diss PY, pronounced alteration along a small ridge	0.006
167371	503046	5267363	A. Pleson	41P10D107	149884	Leonard	strongly ankerite altered arenite with minor diss PY, pronounced alteration along a small ridge	0.001
167372	502909	5267296	A. Pleson	41P10D107	149884	Leonard	strongly ankerite altered arenite with minor diss PY, pronounced alteration along a small ridge	0.004
167373	502909	5267296	A. Pleson	41P10D107	149884	Leonard	strongly ankerite altered arenite with minor diss PY, pronounced alteration along a small ridge	0.008
167374	502909	5267296	A. Pleson	41P10D107	149884	Leonard	strongly ankerite altered arenite with minor diss PY, pronounced alteration along a small ridge	0.005
167375	503514	5266370	A. Pleson	41P10D148	772060	Leonard	gossanous patch of conglomerate, poor exposure	0.006
167376	503514	5266370	A. Pleson	41P10D148	772060	Leonard	427-429 from road side oc of conglomerate, weak shear? Locally gossanous with up to 6% PY	0.002
167377	503565	5266407	A. Pleson	41P10D148	772060	Leonard	small quartz vein within a gossanous patch of conglomerate along a poorly developed shear	0.019
167378	503565	5266407	A. Pleson	41P10D148	772060	Leonard	gossanous patch of conglomerate, poor exposure	0.006
167379	503565	5266407	A. Pleson	41P10D148	772060	Leonard	gossanous patch of conglomerate, poor exposure	0.002
167380	503790	5266891	A. Pleson	41P10D129	167178	Leonard	gossanous patch of conglomerate, poor exposure	0.001
167381	511214	5268702	A. Pleson	41P10C044	536572	Leith	weakly sil and bx mafic volcanics with infilling carb and irr patches of PY agg	0.001
167382	511034	5268706	A. Pleson	41P10C044	536572	Leith	weakly sil and bx mafic volcanics with infilling carb and irr patches of PY agg	0.002
167383	511058	5268748	A. Pleson	41P10C044	536572	Leith	weakly sil and bx mafic volcanics with infilling carb and irr patches of PY agg	0.006
167384	511058	5268748	A. Pleson	41P10C044	536572	Leith	weakly sil and bx mafic volcanics with infilling carb and irr patches of PY agg	0.002
167385	511058	5268748	A. Pleson	41P10C044	536572	Leith	bleached silicified cherty IF with 10% diss mgr PY throughout	0.002
167386	511058	5268748	A. Pleson	41P10C044	536572	Leith	bleached silicified cherty IF with 10% diss mgr PY throughout	0.008
167387	511474	5269008	A. Pleson	41P10C045	53673	Leith	bleached silicified cherty IF with 10% diss mgr PY throughout	0.002
167388	505925	5269066	A. Pleson	41P10D053	145573	Leonard	silver showing by Wapus Creek, sample from talus	0.036
167389	505925	5269066	A. Pleson	41P10D053	145573	Leonard	silver showing by Wapus Creek, sample from talus	0.971
167390	505925	5269066	A. Pleson	41P10D053	145573	Leonard	silver showing by Wapus Creek, sample from talus	0.026

Sample ID	Easting	Northing	Sampler	Cell#	Claim	Twp	Description	Au (g/t)
167391	506854	5269479	A. Pleson	41P10D035	220802	Leith	weakly sil and bx mafic volcanics with infilling carb and irr patches of PY agg	0.002
167392	506160	5271496	A. Pleson	41P10E334	337709	Tyrrell	weakly sil and bx mafic volcanics with infilling carb and irr patches of PY agg	0.001
167393	505803	5273367	A. Pleson	41p10e253	208556	Tyrrell	weakly sil and bx mafic volcanics with infilling carb and irr patches of PY agg	0.006
167394	510961	5268573	A. Pleson	41P10C064	536581	Leith	weakly sil and bx mafic volcanics with infilling carb and irr patches of PY agg	0.003
167395	510961	5268573	A. Pleson	41P10C064	536581	Leith	weakly sil and bx mafic volcanics with infilling carb and irr patches of PY agg	0.001
167396	510961	5268573	A. Pleson	41P10C064	536581	Leith	weakly sil and bx mafic volcanics with infilling carb and irr patches of PY agg	0.021
167397	502793	5270090	A. Pleson	41P10E386	686372	Tyrrell	meta sed with 1-2% dis PY	27.2
167398	502788	5270090	A. Pleson	41P10E386	686372	Tyrrell	meta sed with 1-2% dis PY	16.35
167399	502788	5270090	A. Pleson	41P10E386	686372	Tyrrell	meta sed with 1-2% dis PY	0.07
167400	502788	5270090	A. Pleson	41P10E386	686372	Tyrrell	meta sed with 1-2% dis PY	0.021
39247	511035	5270383	F. Smith	41P10F384	536610	Milner	meta sed with 1-2% dis PY	0.003
39248	511082	5270320	F. Smith	41P10F384	536610	Milner	meta sed with 1-2% dis PY	0.004
39249	511081	5270319	F. Smith	41P10F384	536610	Milner	meta sed with 1-2% dis PY	<0.001
39250	502769	5269997	F. Smith	41P10E386	686372	Tyrrell	meta sed with 1-2% dis PY	0.005

# Appendix D- Grab Sample Assay Certifications



ALS Canada Ltd.  
 2103 Dollarton Hwy  
 North Vancouver BC V7H 0A7  
 Phone: +1 604 984 0221 Fax: +1 604 984 0218  
 www.alsglobal.com/geochemistry

TO: **IMETAL RESOURCES INC.**  
**580 HORNBY STREET**  
**VANCOUVER BC V6C 3B6**

Page: 1  
 Total # Pages: 4 (A - D)  
 Plus Appendix Pages  
 Finalized Date: 26-MAY-2021  
 This copy reported on 3-JUN-2021  
 Account: RESMETH

**CERTIFICATE TB21117682**

Project: **Gowganda**

This report is for 93 samples of Rock submitted to our lab in Thunder Bay, ON, Canada on 11-MAY-2021.  
 The following have access to data associated with this certificate:  
 TIM HENNERBERRY ALEX PLESON

**SAMPLE PREPARATION**

ALS CODE	DESCRIPTION
WEI-21	Received Sample Weight
LOG-22	Sample log/in - Rcd w/o BarCode
CRU-QC	Crushing QC Test
PUL-QC	Pulverizing QC Test
CRU-31	Fine crushing - 70% < 2mm
SPR-21	Split sample - riffle splitter
PUL-31	Pulverize up to 250g 85% < 75 um

**ANALYTICAL PROCEDURES**

ALS CODE	DESCRIPTION	INSTRUMENT
ME-OC46	Ore Grade Elements - AquaRegia	ICP-AES
Cu-OC46	Ore Grade Cu - Aqua Regia	
Au-CRA21	Au 30g FA-CRAV finish	WST-SIM
AUME-TL43	25g Trace Au + Multi Element PKG	

This is the Final Report and supersedes any preliminary report with this certificate number. Results apply to samples as submitted. All pages of this report have been checked and approved for release.  
 \*\*\*\*\* See Appendix Page for comments regarding this certificate \*\*\*\*\*

**Signature:**   
 Saa Traxler, General Manager, North Vancouver







ALS Canada Ltd.  
2103 Dollarton Hwy  
North Vancouver BC V7H 0A7  
Phone: +1 604 984 0221 Fax: +1 604 984 0218  
www.alsglobal.com/geochemistry

TO: METAL RESOURCES INC.  
580 HORNBY STREET  
VANCOUVER BC V6C 3B6

Page: 2 - A  
Total # Pages: 4 (A - D)  
Plus Appendix Pages  
Finalized Date: 26-MAY-2021  
Account: RESMETI

Project: Cowganda

**CERTIFICATE OF ANALYSIS TB21117682**

Sample Description	Method Analyte LOD	WE-21	Record Wt. kg	Au ppm	Ag ppm	Al %	As ppm	B ppm	Ba ppm	Be ppm	Bi ppm	C %	Cd ppm	Ce ppm	Co ppm	Cr ppm	Cs ppm
167301		1.10	0.990	<10	0.20	1.44	0.8	<10	500	0.22	0.17	1.54	0.03	17.10	24.9	47	0.16
167302		1.94	0.006	0.05	0.57	1.1	1.1	<10	30	0.17	0.10	2.36	0.04	18.25	16.5	20	0.09
167303		1.57	>1.00	10.40	0.11	1.5	<10	<10	10	<0.05	0.92	0.01	0.03	3.61	15.4	11	0.05
167304		0.72	0.098	0.06	2.79	1.2	<10	<10	30	0.20	0.06	1.00	0.03	18.25	30.2	12	0.32
167305		1.34	0.017	0.03	0.58	4.4	<10	<10	180	0.35	0.10	4.03	0.04	18.20	16.2	35	0.19
167306		1.02	0.065	0.06	2.03	8.3	<10	<10	170	0.43	0.28	4.72	0.03	31.5	28.1	53	0.29
167307		1.09	0.007	0.02	3.08	17.0	<10	<10	50	0.54	0.10	1.98	0.04	12.70	28.5	99	0.28
167308		1.10	0.031	<10	2.54	17.3	<10	<10	110	0.45	0.09	2.12	0.04	15.60	27.4	152	0.25
167309		0.88	0.013	<10	0.27	0.8	<10	<10	40	0.27	0.08	0.83	0.03	10.05	1.6	6	0.33
167310		1.30	0.007	0.02	0.52	3.1	<10	<10	60	0.31	0.19	0.83	0.02	14.65	7.9	10	0.19
167311		1.02	0.004	0.04	0.29	16.8	<10	<10	90	0.23	0.20	0.80	0.04	17.60	5.4	7	0.32
167312		1.55	>1.00	0.38	0.17	1.7	<10	<10	60	0.07	0.11	1.02	0.04	11.15	5.2	14	0.07
167313		0.34	0.015	0.13	0.88	3.8	<10	<10	40	0.31	0.53	2.28	0.04	13.75	9.0	10	0.34
167314		1.67	0.027	0.08	2.09	14.5	<10	<10	230	0.59	0.24	2.46	0.04	17.40	20.1	86	0.16
167315		0.94	0.023	0.09	1.54	27.1	<10	<10	130	0.29	0.29	1.27	0.04	24.4	26.4	109	0.45
167316		0.92	0.005	0.08	2.04	6.3	<10	<10	50	0.30	0.04	1.10	0.14	26.0	31.9	12	1.05
167317		2.38	0.040	0.11	2.36	12.4	<10	<10	170	0.40	0.13	5.15	0.09	18.55	22.1	122	0.30
167389		0.78	0.971	0.43	1.48	1.0	<10	<10	20	0.40	0.52	0.16	<0.01	24.2	13.5	69	0.29
167390		0.79	0.026	0.05	2.19	1.3	<10	<10	20	0.90	0.22	0.27	<0.01	66.3	21.1	96	0.42
167391		0.79	0.002	0.01	0.85	2.0	<10	<10	10	0.18	0.08	0.39	0.01	25.9	5.4	49	<0.05
167392		1.30	0.001	0.04	2.00	3.3	<10	<10	10	0.59	0.29	0.16	0.01	17.75	23.4	90	0.20
167393		0.75	0.006	0.10	2.33	5.4	<10	<10	10	0.40	0.17	1.90	0.03	18.75	27.2	208	0.30
167394		0.36	0.003	0.01	5.54	0.9	<10	<10	20	0.24	0.02	0.26	0.03	2.93	45.4	114	0.23
167395		4.07	0.001	0.01	0.06	0.2	<10	<10	<10	<0.05	0.02	0.15	0.20	0.60	0.9	20	<0.05
167396		0.33	0.021	0.02	3.43	0.9	<10	<10	20	0.14	0.03	0.50	0.06	4.03	31.3	39	0.22
167397		0.73	>1.00	8.84	0.18	1.3	<10	<10	110	0.10	1.69	1.47	0.04	4.20	7.2	58	0.07
167398		0.68	>1.00	11.15	0.16	4.3	<10	<10	70	0.12	1.18	1.57	0.04	4.21	18.6	46	0.08
167399		0.66	0.070	0.06	0.96	2.6	<10	<10	80	0.48	0.12	6.07	0.06	15.55	28.6	91	0.34
167400		0.37	0.021	0.03	1.17	3.0	<10	<10	70	0.50	0.02	6.28	0.07	17.40	31.5	138	0.44
167318		0.80	0.023	0.08	1.55	5.2	<10	<10	40	0.23	0.28	2.47	0.02	21.5	12.9	54	0.27
167319		1.28	0.020	0.06	0.53	49.2	<10	<10	140	0.38	0.18	2.74	0.09	17.2	31	31	0.25
167320		1.00	0.036	0.06	0.99	15.1	<10	<10	80	0.39	0.16	1.55	0.07	22.2	18.4	29	0.33
167321		0.77	0.047	0.07	0.37	1.1	<10	<10	70	0.23	0.10	1.08	0.04	12.95	6.5	6	0.29
167322		1.10	0.034	0.08	0.92	3.2	<10	<10	150	0.25	0.33	0.99	0.04	17.90	14.4	19	0.21
167323		1.17	0.049	0.03	0.77	0.7	<10	<10	230	0.13	0.09	1.15	0.02	12.50	9.5	14	0.11
167324		1.03	0.006	0.04	1.26	1.4	<10	<10	40	0.40	0.11	0.23	0.03	18.30	13.2	13	0.42
167325		0.55	0.003	0.04	2.15	1.8	<10	<10	40	0.51	0.16	0.18	0.03	23.0	23.8	28	0.36
167326		1.01	0.001	0.10	0.97	15.1	<10	<10	60	0.42	0.10	0.45	0.03	14.45	19.6	8	0.18
167327		1.00	0.011	0.30	1.43	103.0	<10	<10	40	0.45	0.13	0.69	0.07	11.90	16.6	42	0.26
167328		1.43	0.001	0.13	2.71	1.7	<10	<10	40	0.20	0.03	2.95	0.04	6.85	40.3	88	0.16

\*\*\*\*\* See Appendix Page for comments regarding this certificate \*\*\*\*\*



ALS Canada Ltd.  
 2103 Dollarton Hwy  
 North Vancouver BC V7H 0A7  
 Phone: +1 604 984 0221 Fax: +1 604 984 0218  
 www.alsglobal.com/geochemistry

T.O: METAL RESOURCES INC.  
 580 HORNBY STREET  
 VANCOUVER BC V6C 3R6

Page: 2 - B  
 Total # Pages: 4 (A - D)  
 Plus Appendix Pages  
 Finalized Date: 26-MAY-2021  
 Account: RESMETT

Project: Cowganda

**CERTIFICATE OF ANALYSIS TB21117682**

Sample Description	Method Analyte Units LOD	CU	FE	CA	CR	HR	HG	IN	K	LA	LI	MG	NI	MO	NA	NB
167301	AMUE-T143	62.6	3.58	6.58	0.06	0.16	<0.01	0.021	0.04	8.4	19.3	0.86	807	1.72	0.03	<0.05
167302	AMUE-T143	52.1	2.16	2.66	<0.05	0.40	<0.01	0.011	0.07	8.0	7.0	0.29	909	0.72	0.05	0.17
167303	AMUE-T143	6480	3.40	0.39	<0.05	0.10	0.10	0.217	0.01	1.8	0.6	0.02	35	0.74	0.02	<0.05
167304	AMUE-T143	90.5	4.47	9.89	0.09	0.22	<0.01	0.008	0.07	8.5	32.0	2.05	365	0.32	0.16	0.05
167305	AMUE-T143	138.0	5.04	2.28	0.06	0.08	<0.01	0.018	0.10	8.4	6.0	1.01	1070	0.50	0.03	<0.05
167306	AMUE-T143	45.4	5.05	4.70	0.07	0.04	0.01	0.029	0.14	14.9	16.4	1.09	812	1.56	0.02	<0.05
167307	AMUE-T143	19.0	8.88	10.65	0.10	0.11	<0.01	0.014	0.09	5.7	32.4	1.55	715	1.11	0.02	<0.05
167308	AMUE-T143	31.8	6.10	9.42	0.07	0.12	<0.01	0.014	0.10	7.0	27.5	1.54	736	0.82	0.02	<0.05
167309	AMUE-T143	2.8	0.53	1.27	<0.05	0.12	<0.01	<0.005	0.10	5.2	2.0	0.04	185	0.21	0.05	<0.05
167310	AMUE-T143	23.7	1.72	2.66	<0.05	0.19	<0.01	0.010	0.11	7.0	7.8	0.33	389	0.89	0.04	<0.05
167311	AMUE-T143	14.6	1.24	1.10	<0.05	0.33	<0.01	0.009	0.11	8.4	2.9	0.16	400	1.21	0.04	<0.05
167312	AMUE-T143	2.9	1.80	0.83	<0.05	0.30	<0.01	0.010	0.01	5.2	2.1	0.20	312	0.65	0.07	<0.05
167313	AMUE-T143	22.5	1.94	4.55	<0.05	0.17	0.01	0.008	0.11	6.7	17.4	0.39	588	0.47	0.03	<0.05
167314	AMUE-T143	86.3	6.89	9.10	0.10	0.20	0.01	0.018	0.07	8.3	31.3	1.42	725	0.90	0.03	<0.05
167315	AMUE-T143	47.9	5.07	8.39	0.07	0.14	<0.01	0.019	0.11	11.8	25.5	1.40	751	1.21	0.04	<0.05
167316	AMUE-T143	159.0	6.95	12.20	0.18	0.51	<0.01	0.020	0.09	10.8	19.0	1.43	633	0.82	0.05	0.18
167317	AMUE-T143	30.2	5.46	9.38	0.06	0.16	0.02	0.019	0.08	8.7	30.8	1.42	1260	0.87	0.02	<0.05
167318	AMUE-T143	>10000	5.06	9.03	0.09	0.54	0.01	0.207	0.03	10.3	29.3	1.08	250	0.91	0.03	<0.05
167319	AMUE-T143	2300	4.35	12.95	0.12	0.41	<0.01	0.041	0.08	33.3	46.6	1.75	383	1.08	0.03	<0.05
167391	AMUE-T143	14.9	1.58	5.99	0.13	0.24	<0.01	0.009	0.03	12.2	14.1	0.53	214	0.40	0.05	0.26
167392	AMUE-T143	52.6	3.81	13.30	0.11	0.30	0.01	0.021	0.05	7.7	43.0	1.74	212	1.04	0.05	<0.05
167393	AMUE-T143	116.5	4.04	10.45	0.17	0.18	<0.01	0.013	0.02	9.1	33.9	2.38	626	0.42	0.03	<0.05
167394	AMUE-T143	100.5	9.13	14.00	0.11	0.04	<0.01	0.018	0.06	1.2	101.5	3.65	901	1.09	0.01	<0.05
167395	AMUE-T143	9.4	0.33	0.20	<0.05	<0.02	<0.01	<0.005	0.01	0.2	1.1	0.03	50	0.51	0.01	<0.05
167396	AMUE-T143	124.5	5.90	8.88	0.07	0.06	<0.01	0.016	0.08	1.5	62.8	2.25	797	1.88	0.01	<0.05
167397	AMUE-T143	31.0	1.15	0.63	<0.05	<0.02	0.18	0.008	0.03	1.9	2.3	0.55	475	0.52	0.01	<0.05
167398	AMUE-T143	40.8	1.55	0.51	<0.05	0.02	0.21	0.007	0.03	2.0	2.0	0.56	594	13.45	0.01	<0.05
167399	AMUE-T143	33.0	3.68	2.42	0.05	0.05	0.02	0.018	0.18	7.1	11.7	2.43	1280	0.18	0.01	<0.05
167400	AMUE-T143	48.4	4.50	2.48	0.06	0.09	<0.01	0.022	0.16	8.0	13.1	2.99	1470	0.32	0.01	<0.05
167318	AMUE-T143	15.6	4.02	7.16	0.06	0.20	<0.01	0.013	0.05	10.6	23.2	0.79	521	2.93	0.03	<0.05
167319	AMUE-T143	13.3	4.53	2.83	0.07	0.12	0.01	0.027	0.15	11.0	8.6	0.93	1320	0.92	0.02	<0.05
167320	AMUE-T143	28.7	3.85	3.85	0.06	0.23	<0.01	0.012	0.14	10.3	14.0	0.65	925	0.80	0.02	<0.05
167321	AMUE-T143	62.4	2.52	1.30	<0.05	0.23	<0.01	0.016	0.13	5.9	3.7	0.42	535	0.82	0.04	<0.05
167322	AMUE-T143	21.9	3.01	4.70	0.05	0.30	0.01	0.017	0.10	8.7	16.0	0.51	496	9.84	0.04	<0.05
167323	AMUE-T143	17.4	2.91	4.54	<0.05	0.33	<0.01	0.020	0.06	5.4	10.0	0.55	527	0.85	0.05	<0.05
167324	AMUE-T143	22.8	3.63	5.37	0.05	0.19	<0.01	0.008	0.14	8.8	14.9	0.58	467	0.40	0.03	<0.05
167325	AMUE-T143	34.9	4.72	8.11	0.08	0.13	<0.01	0.013	0.10	9.2	36.8	0.96	452	0.46	0.02	<0.05
167326	AMUE-T143	17.6	3.18	3.85	0.06	0.07	0.01	0.008	0.17	6.8	12.6	0.47	592	0.44	0.02	<0.05
167327	AMUE-T143	33.9	5.35	6.87	0.08	0.32	0.03	0.015	0.10	5.5	23.9	0.78	1100	1.37	0.03	<0.05
167328	AMUE-T143	63.2	5.72	8.61	0.09	0.09	0.02	0.015	0.10	2.5	47.0	1.89	1040	0.30	0.02	0.06

\*\*\*\*\* See Appendix Page for comments regarding this certificate \*\*\*\*\*



ALS Canada Ltd.  
 2103 Dollarton Hwy  
 North Vancouver BC V7H 0A7  
 Phone: +1 604 984 0221 Fax: +1 604 984 0218  
 www.alsglobal.com/geochemistry

TO: METAL RESOURCES INC.  
 580 HORNBY STREET  
 VANCOUVER BC V6C 3B6

Page: 2 - C  
 Total # Pages: 4 (A - D)  
 Plus Appendix Pages  
 Finalized Date: 26-MAY-2021  
 Account: RESMETT

Project: Cowganda

CERTIFICATE OF ANALYSIS TB21117682

Sample Description	Method	Analyte	Units	LOD	AUME-T143																
					Ni	P	Pb	Rb	Re	S	SD	Sc	Se	Sn	Sr	Ta	Tb	Ti	Th	Tl	
167301	44.9	240	1.2	2.3	<0.001	0.10	0.09	10.7	<0.2	<0.2	<0.2	24.8	<0.01	0.03	1.4	0.007					
167302	27.0	300	1.7	2.2	<0.001	0.20	0.11	4.1	<0.2	<0.2	<0.2	21.9	<0.01	0.02	4.7	0.011					
167303	60.6	30	3.8	0.5	<0.001	1.73	0.14	0.7	<0.01	2.0	<0.2	2.3	<0.01	0.02	0.4	<0.005					
167304	82.7	450	15.1	3.4	<0.001	0.04	<0.05	4.3	0.2	0.3	<0.2	28.7	<0.01	<0.01	1.9	0.203					
167305	53.0	850	2.0	3.6	<0.001	0.23	0.64	5.2	<0.2	<0.2	<0.2	133.5	<0.01	0.02	1.7	<0.005					
167306	71.0	1320	3.5	5.1	<0.001	0.33	0.29	7.6	0.4	<0.2	<0.2	57.2	<0.01	0.05	2.0	<0.005					
167307	101.0	590	1.5	3.8	0.001	0.25	0.18	7.0	0.3	<0.2	<0.2	22.9	<0.01	0.03	1.0	<0.005					
167308	125.0	600	1.9	4.9	0.001	0.32	0.22	5.8	0.2	<0.2	<0.2	51.1	<0.01	0.04	1.0	<0.005					
167309	1.7	170	0.9	4.0	<0.001	0.04	0.08	0.5	<0.2	<0.2	<0.2	13.6	<0.01	0.01	1.2	<0.005					
167310	10.2	210	0.8	3.8	<0.001	0.10	0.09	2.0	0.2	<0.2	<0.2	15.3	<0.01	0.02	1.7	<0.005					
167311	7.1	180	1.7	3.5	<0.001	0.09	0.17	2.0	<0.2	<0.2	<0.2	16.7	<0.01	0.01	3.4	<0.005					
167312	10.2	340	1.7	0.6	<0.001	0.35	0.11	4.7	<0.2	<0.2	<0.2	28.4	<0.01	0.07	0.9	<0.005					
167313	11.5	210	2.8	4.5	<0.001	0.19	0.22	1.6	<0.01	<0.2	<0.2	29.9	<0.01	0.02	1.7	<0.005					
167314	58.9	720	1.9	3.3	<0.001	0.20	0.59	6.0	<0.2	<0.2	<0.2	123.5	<0.01	0.01	1.3	<0.005					
167315	56.5	1010	3.9	7.2	<0.001	0.40	0.50	6.4	<0.2	<0.2	<0.2	36.6	<0.01	0.04	2.3	<0.005					
167316	27.7	1000	6.5	11.7	0.002	0.09	0.17	6.2	0.5	0.8	0.8	19.4	<0.01	0.03	1.7	0.474					
167317	97.3	550	3.6	4.1	<0.001	0.32	0.31	5.6	0.4	<0.2	<0.2	187.0	<0.01	0.05	1.3	<0.005					
167389	42.0	470	2.0	4.3	<0.001	1.39	0.11	3.3	4.5	0.2	2.7	5.6	<0.01	0.03	7.4	0.007					
167390	62.0	620	1.1	5.1	<0.001	0.20	0.06	4.9	0.5	0.3	0.3	5.1	<0.01	0.01	10.1	0.009					
167391	23.6	440	1.3	0.8	<0.001	0.01	0.07	3.9	<0.2	<0.2	0.4	54.3	<0.01	<0.01	3.6	0.081					
167392	51.9	630	2.5	2.9	<0.001	0.03	0.06	7.2	0.3	0.5	0.5	3.4	<0.01	0.03	10.9	0.031					
167393	147.0	440	21.9	1.3	<0.001	0.11	5.7	5.7	0.2	0.3	41.9	187.0	<0.01	0.03	1.4	0.172					
167394	195.5	1120	0.8	2.5	<0.001	<0.01	<0.05	8.8	<0.2	2.7	4.0	4.0	<0.01	<0.01	0.2	<0.005					
167395	3.5	50	0.3	0.3	<0.001	0.01	<0.05	0.2	<0.2	0.9	3.7	3.7	<0.01	<0.01	<0.2	<0.005					
167396	59.5	750	1.0	3.1	<0.001	0.06	<0.05	3.8	<0.2	1.5	6.1	6.1	<0.01	0.01	0.3	<0.005					
167397	42.5	60	11.7	1.0	<0.001	0.03	0.19	2.6	0.5	0.2	80.2	<0.01	10.00	<0.2	<0.005						
167398	62.1	130	14.8	1.3	<0.001	0.09	0.23	2.9	0.4	<0.2	<0.2	43.6	<0.01	15.80	0.2	<0.005					
167399	21.7	1180	4.0	5.6	<0.001	0.03	0.18	13.6	0.2	<0.2	<0.2	223	<0.01	0.27	1.1	<0.005					
167400	22.5	970	3.5	5.8	<0.001	<0.01	0.27	17.0	0.3	<0.2	<0.2	338	<0.01	0.09	1.0	<0.005					
167318	44.7	390	2.3	4.6	<0.001	0.35	0.22	4.2	<0.2	<0.2	<0.2	27.0	<0.01	0.09	1.7	<0.005					
167319	46.0	780	2.7	6.3	<0.001	0.26	0.34	5.9	0.2	<0.2	<0.2	71.2	<0.01	0.05	2.2	<0.005					
167320	44.8	590	1.9	6.7	<0.001	0.21	0.24	3.5	0.2	<0.2	<0.2	28.8	<0.01	0.03	2.1	<0.005					
167321	13.8	450	1.5	4.1	<0.001	0.26	0.17	3.1	<0.01	<0.2	<0.2	22.5	<0.01	0.11	2.8	<0.005					
167322	22.3	280	1.8	3.4	0.003	0.33	0.15	4.6	0.2	<0.2	<0.2	32.5	<0.01	0.12	2.3	<0.005					
167323	13.1	460	1.1	2.1	<0.001	0.17	0.13	4.9	<0.2	<0.2	<0.2	23.8	<0.01	0.04	1.7	0.007					
167324	24.9	360	1.2	5.9	<0.001	0.07	0.21	2.7	<0.2	<0.2	<0.2	5.2	<0.01	0.01	2.6	0.008					
167325	38.4	420	1.1	3.5	<0.001	0.07	0.15	5.9	0.3	<0.2	<0.2	4.1	<0.01	0.01	2.0	<0.005					
167326	14.3	550	1.8	5.3	<0.001	0.66	0.14	2.1	0.2	<0.2	<0.2	9.1	<0.01	0.05	1.1	<0.005					
167327	53.9	380	4.4	5.1	<0.001	0.38	0.42	5.6	0.5	<0.2	<0.2	12.9	<0.01	0.02	1.4	0.014					
167328	115.0	720	1.3	3.2	0.001	0.63	<0.05	6.0	1.0	0.2	23.7	<0.01	0.09	<0.2	0.218						

\*\*\*\*\* See Appendix Page for comments regarding this certificate \*\*\*\*\*



ALS Canada Ltd.  
 2103 Dollarton Hwy  
 North Vancouver BC V7H 0A7  
 Phone: +1 604 984 0221 Fax: +1 604 984 0218  
 www.alsglobal.com/geochemistry

To: **IMETAL RESOURCES INC.**  
**580 HORNBY STREET**  
**VANCOUVER BC V6C 3B6**

Page: 2 - D  
 Total # Pages: 4 (A - D)  
 Plus Appendix Pages  
 Finalized Date: 26-MAY-2021  
 Account: RESMETI

Project: Gowganda

**CERTIFICATE OF ANALYSIS TB21117682**

Sample Description	Method Analyte Units LOD	AuME-TL43		AuME-TL43		AuME-TL43		AuME-TL43		AuME-TL43		Cu-OC46		Au-CRA21	
		Tl ppm	U ppm	V ppm	W ppm	Y ppm	Zn ppm	Zr ppm	Cu %	Au ppm					
167301		0.02	0.16	49	0.36	3.13	62	6.3							
167302		0.03	1.12	22	0.19	5.37	21	11.3							
167303		<0.02	0.11	2	0.08	0.60	3	3.5						67.9	
167304		0.02	0.40	88	0.13	9.79	78	12.0							
167305		0.03	0.40	13	1.56	5.67	29	4.8							
167306		0.05	0.44	28	0.09	9.52	34	2.2							
167307		0.03	0.17	44	0.06	5.33	65	5.7							
167308		0.04	0.17	57	0.38	4.89	73	6.6							
167309		0.02	0.17	1	0.05	1.16	9	4.9							
167310		0.02	0.27	6	0.05	3.32	16	7.8							
167311		0.02	0.52	3	0.05	4.73	11	12.1							
167312		<0.02	0.17	4	0.18	2.41	16	13.5						3.76	
167313		0.03	0.26	9	0.26	3.35	30	7.1							
167314		0.03	0.26	48	1.60	5.82	69	10.6					1.475		
167315		0.05	0.42	46	0.05	7.29	51	7.5							
167316		0.16	0.37	212	0.15	21.0	105	28.5							
167317		0.05	0.25	48	0.15	7.08	72	8.8							
167389		0.03	2.36	45	0.06	5.32	30	21.8							
167390		0.03	3.31	62	0.06	8.63	49	19.1							
167391		<0.02	0.77	27	0.12	4.18	22	8.5							
167392		<0.02	3.22	64	0.06	7.88	36	13.4							
167393		0.02	0.37	78	0.35	5.71	82	7.0							
167394		<0.02	<0.05	86	<0.05	4.32	128	0.9							
167395		<0.02	<0.05	1	<0.05	0.27	2	<0.5							
167396		0.02	<0.05	48	<0.05	2.85	80	3.1							
167397		<0.02	<0.05	8	<0.05	1.37	10	0.7						27.2	
167398		0.03	<0.05	9	0.13	1.73	9	1.3						16.35	
167399		0.05	0.21	18	0.12	5.74	24	2.3							
167400		0.04	0.18	20	0.07	6.49	26	4.3							
167318		0.02	0.37	36	0.13	5.23	28	9.5							
167319		0.06	0.33	13	0.08	6.26	37	7.1							
167320		0.04	0.40	11	0.05	6.23	43	11.3							
167321		0.02	0.38	4	0.11	4.74	30	12.0							
167322		0.03	0.30	17	0.25	4.92	44	12.8							
167323		<0.02	0.21	27	0.71	3.84	32	12.2							
167324		0.03	0.27	18	0.20	3.51	51	6.5							
167325		0.02	0.19	45	<0.05	4.52	83	6.0							
167326		0.05	0.17	11	<0.05	3.32	47	2.7							
167327		0.08	0.25	36	0.43	4.21	70	14.7							
167328		0.02	<0.05	73	<0.05	6.60	72	2.5							

\*\*\*\*\* See Appendix Page for comments regarding this certificate \*\*\*\*\*



ALS Canada Ltd.  
 2103 Dollarton Hwy  
 North Vancouver BC V7H 0A7  
 Phone: +1 604 984 0221 Fax: +1 604 984 0218  
 www.alsglobal.com/geochemistry

TO: METAL RESOURCES INC.  
 580 HORNBY STREET  
 VANCOUVER BC V6C 3B6

Page: 3 - A  
 Total # Pages: 4 (A - D)  
 Plus Appendix Pages  
 Finalized Date: 26-MAY-2021  
 Account: RESMETT

Project: Gowganda

**CERTIFICATE OF ANALYSIS TB21117682**

Sample Description	Method Analyte Units LOD	Au		Ag		Al		As		Ba		Be		Bi		Ca		Cd		Co		Cr		Cs	
		WEI-21 Record Wt. kg	AMNE-TL43 ppm	AMNE-TL43 ppm	AMNE-TL43 %	AMNE-TL43 ppm	AMNE-TL43 ppm	AMNE-TL43 %	AMNE-TL43 ppm	AMNE-TL43 ppm	AMNE-TL43 ppm	AMNE-TL43 ppm	AMNE-TL43 %	AMNE-TL43 ppm	AMNE-TL43 ppm	AMNE-TL43 ppm	AMNE-TL43 %	AMNE-TL43 ppm	AMNE-TL43 ppm	AMNE-TL43 ppm	AMNE-TL43 ppm	AMNE-TL43 ppm	AMNE-TL43 ppm	AMNE-TL43 ppm	AMNE-TL43 ppm
167329		1.50	0.001	0.09	3.88	2.4	<10	20	0.25	0.04	0.69	0.01	4.74	35.2	98	0.15									
167330		1.38	0.019	0.19	0.04	19.2	<10	10	0.12	0.11	2.67	0.02	3.80	2.0	8	<0.05									
167331		0.67	0.003	0.21	2.31	4.4	<10	40	0.81	0.27	0.95	0.02	54.0	22.7	84	0.57									
167332		0.52	<0.001	0.01	0.40	0.4	<10	10	<0.05	<0.01	0.72	0.03	1.01	3.5	13	<0.05									
167333		2.17	<0.001	0.08	0.15	0.4	<10	10	<0.05	0.01	0.57	0.03	1.57	1.5	19	0.07									
167334		1.79	0.005	0.06	1.25	2.6	<10	10	0.71	0.20	1.27	0.01	49.7	12.2	67	0.27									
167335		2.01	0.005	0.04	1.67	1.8	<10	10	0.77	0.17	0.38	0.01	70.8	17.1	86	0.31									
167363		0.65	0.006	0.01	1.35	0.9	<10	30	0.42	0.04	0.61	0.03	16.25	12.1	11	0.32									
167364		1.45	0.884	0.41	1.63	27.6	<10	40	1.07	0.35	1.07	0.28	2.40	21.9	29	0.31									
167365		0.99	0.330	0.09	0.93	13.2	<10	40	0.25	0.45	0.73	0.02	4.05	11.7	21	0.30									
167366		0.52	0.007	0.13	3.11	15.7	<10	20	0.80	0.06	0.93	0.04	28.8	45.2	45	1.50									
167367		0.73	0.003	0.01	2.20	1.1	<10	30	0.38	0.03	0.13	0.03	4.49	19.0	71	0.33									
167368		0.78	0.021	0.41	1.56	21.2	<10	30	0.43	0.13	2.17	0.05	14.00	27.8	40	0.24									
167369		0.63	0.005	0.06	1.01	1.3	<10	40	0.28	0.05	0.86	0.05	16.45	18.8	62	0.11									
167370		0.46	0.006	0.13	1.69	2.7	<10	20	0.12	0.07	0.75	0.05	15.55	34.4	5	0.31									
167371		0.52	0.001	0.01	2.50	1.8	<10	30	0.67	0.04	0.31	0.01	17.00	25.3	102	0.75									
167372		0.30	0.004	0.04	2.23	3.3	<10	20	0.57	0.06	1.92	0.03	31.0	17.9	138	0.57									
167373		1.33	0.008	0.06	2.86	5.8	<10	20	0.86	0.09	2.01	0.01	28.0	22.7	143	0.52									
167374		0.37	0.005	0.07	3.24	4.5	<10	20	1.20	0.09	4.30	0.05	51.9	26.1	197	0.42									
167375		1.04	0.006	0.34	4.25	15.2	<10	30	0.30	0.10	1.89	0.11	7.83	43.8	69	0.11									
39247		0.96	0.003	0.07	2.59	5.3	<10	60	0.98	0.39	1.10	0.05	56.6	24.7	82	0.79									
39248		0.93	0.004	0.09	2.55	4.9	<10	60	1.01	0.35	0.74	0.03	62.6	23.1	80	0.94									
39249		3.48	<0.001	0.02	2.99	8.6	80	20	0.07	0.01	0.97	0.11	4.19	36.0	46	0.35									
39250		1.22	0.005	0.06	1.74	24.6	<10	200	0.38	0.09	2.65	0.08	32.6	21.7	109	0.28									
167376		0.22	0.002	0.05	0.07	5.8	<10	50	0.09	0.08	7.60	0.32	8.93	6.9	8	<0.05									
167377		0.67	0.019	1.26	3.72	56.2	<10	10	0.17	0.07	0.08	0.13	3.37	19.0	92	0.23									
167378		0.79	0.006	0.24	0.22	13.2	<10	<10	<0.05	0.01	1.94	0.08	0.84	3.6	20	<0.05									
167379		0.94	0.002	0.05	2.22	1.4	<10	20	0.14	0.02	0.52	0.02	17.35	9.0	8	0.21									
167380		1.01	0.001	0.02	1.73	1.2	<10	50	0.22	0.03	1.54	0.08	26.4	16.0	46	0.48									
167381		0.73	0.001	0.07	4.61	2.2	<10	40	0.31	0.02	1.97	0.03	6.98	42.1	147	0.27									
167382		0.89	0.002	0.03	3.02	2.7	<10	<10	0.21	0.03	11.00	0.04	8.44	12.8	55	0.05									
167383		1.51	0.006	0.46	0.23	15.2	<10	<10	0.29	0.10	2.05	0.08	1.65	6.1	8	0.05									
167384		0.98	0.002	0.14	4.85	3.7	<10	10	0.33	0.14	8.13	0.14	5.09	26.2	52	0.09									
167385		0.87	0.002	0.11	2.33	12.5	<10	20	0.33	0.86	5.60	0.06	3.46	11.8	6	0.39									
167386		0.49	0.008	0.30	4.44	3.5	<10	20	1.05	1.70	0.21	0.03	8.43	20.4	87	0.47									
167387		0.35	0.002	0.08	1.87	2.6	<10	50	0.74	0.37	0.33	0.04	51.0	17.7	88	0.40									
167388		0.94	0.036	0.03	0.22	0.5	<10	10	0.12	0.14	0.17	0.01	3.45	1.9	27	0.07									
167251		1.08	0.002	0.02	2.02	6.4	<10	50	0.29	0.03	0.53	0.03	25.1	19.9	55	0.64									
167252		1.35	>1.00	6.49	0.31	8.8	<10	40	<0.05	0.46	0.10	0.01	12.15	4.2	31	<0.05									
167253		2.64	0.024	0.05	2.93	3.8	<10	10	0.06	0.01	0.96	0.04	1.96	40.0	122	0.23									

\*\*\*\*\* See Appendix Page for comments regarding this certificate \*\*\*\*\*



ALS Canada Ltd.  
 2103 Dolartion Hwy  
 North Vancouver BC V7H 0A7  
 Phone: +1 604 984 0221 Fax: +1 604 984 0218  
 www.alsglobal.com/geochemistry

To: METAL RESOURCES INC.  
 580 HORNERBY STREET  
 VANCOUVER BC V6C 3B6

Page: 3 - B  
 Total # Pages: 4 (A - D)  
 Plus Appendix Pages  
 Finalized Date: 26-MAY-2021  
 Account: RESMETT

Project: Cowganda

**CERTIFICATE OF ANALYSIS TB21117682**

Sample Description	Method Analyte Units LOD	AuME-TL43 Cu ppm 0.2	AuME-TL43 Fe % 0.01	AuME-TL43 Ca ppm 0.05	AuME-TL43 Co ppm 0.05	AuME-TL43 Hf ppm 0.02	AuME-TL43 Hg ppm 0.01	AuME-TL43 In ppm 0.005	AuME-TL43 K % 0.01	AuME-TL43 La ppm 0.2	AuME-TL43 Li ppm 0.1	AuME-TL43 Mg % 0.01	AuME-TL43 Mn ppm 5	AuME-TL43 Mo % 0.05	AuME-TL43 Na % 0.01	AuME-TL43 Nb ppm 0.05
167329	76.7	9.75	11.40	0.21	0.14	0.04	0.007	0.02	1.8	30.1	3.26	1340	0.28	0.02	0.09	
167330	50.1	9.95	0.44	0.29	<0.02	0.07	0.009	<0.01	1.7	34.7	0.01	180	34.7	0.01	<0.05	
167331	413	4.88	9.53	0.15	0.34	0.02	0.021	0.09	27.2	40.6	1.47	441	1.52	0.03	0.11	
167332	3.0	0.91	1.24	<0.05	<0.02	<0.01	<0.005	<0.01	0.5	5.8	0.32	227	0.10	0.01	<0.05	
167333	42.5	0.48	0.45	<0.05	<0.02	<0.01	<0.005	0.02	0.7	2.3	0.09	117	0.10	0.01	<0.05	
167334	1880	2.58	7.22	0.08	0.31	<0.01	0.043	0.07	24.4	24.2	1.06	371	0.50	0.04	<0.05	
167335	1010	3.31	9.94	0.13	0.28	<0.01	0.031	0.07	36.2	33.5	1.31	322	0.75	0.04	<0.05	
167336	8.7	3.50	4.93	0.06	0.20	<0.01	0.012	0.11	7.1	15.8	0.52	384	0.22	0.04	<0.05	
167364	1090	4.11	5.05	0.07	0.20	0.01	0.021	0.06	1.1	21.0	0.98	141	0.90	0.01	<0.05	
167365	130.5	2.53	3.04	0.05	0.18	<0.01	0.029	0.07	1.5	10.7	0.56	330	0.59	0.01	<0.05	
167366	190.0	10.25	17.30	0.30	0.47	0.01	0.065	0.02	12.0	27.4	3.19	842	0.39	0.03	0.09	
167367	19.5	4.21	11.15	0.12	0.12	<0.01	0.016	0.02	1.9	30.5	1.80	308	0.11	0.04	<0.05	
167368	31.7	6.89	4.51	0.07	0.37	<0.01	0.011	0.15	6.5	13.5	0.93	1940	3.24	0.01	<0.05	
167369	169.0	3.20	5.79	0.14	0.20	<0.01	0.018	0.02	8.1	8.5	1.06	590	0.30	0.05	<0.05	
167370	169.0	5.74	8.49	0.14	0.24	<0.01	0.007	0.10	7.7	16.2	1.23	480	0.44	0.05	0.05	
167371	3.5	5.47	13.25	0.13	0.10	<0.01	0.041	0.08	7.5	39.5	2.58	522	0.34	0.05	<0.05	
167372	167372	6.29	10.90	0.14	0.22	<0.01	0.031	0.03	14.9	21.8	1.57	690	0.67	0.03	<0.05	
167373	41.5	7.01	12.35	0.15	0.20	<0.01	0.035	0.04	13.4	30.4	1.99	818	0.80	0.03	<0.05	
167374	125.0	8.09	15.65	0.24	0.26	<0.01	0.044	0.02	24.2	28.3	2.19	1080	0.47	0.03	0.12	
167375	68.4	10.50	10.85	0.12	0.09	0.01	0.026	0.07	3.2	57.6	1.68	3330	0.39	0.02	<0.05	
39247	68.2	4.83	10.65	0.16	0.42	0.01	0.029	0.14	28.5	51.6	1.66	609	1.26	0.03	0.14	
39248	143.5	4.63	9.60	0.17	0.40	<0.01	0.031	0.15	32.7	47.9	1.57	550	1.42	0.03	0.16	
39249	69.4	6.55	9.01	0.20	0.19	0.01	0.009	0.01	1.5	7.5	2.14	607	0.40	0.01	0.06	
39250	59.3	4.82	7.26	0.10	0.03	0.01	0.017	0.10	15.6	19.6	1.23	1000	0.76	0.03	<0.05	
167376	4.8	3.99	0.49	0.06	0.07	<0.01	0.046	0.01	3.8	1.1	1.19	4880	0.64	0.02	<0.05	
167377	65.5	25.7	11.15	0.39	0.11	0.05	0.035	0.04	1.5	24.1	0.71	9020	1.39	<0.01	0.06	
167378	34.7	2.39	0.73	<0.05	<0.02	0.02	0.005	<0.01	0.4	1.9	0.07	1520	0.58	<0.01	<0.05	
167379	6.0	5.07	7.32	0.09	0.19	<0.01	0.012	0.06	8.1	25.0	0.62	690	0.38	0.03	0.05	
167380	24.7	3.46	4.79	0.07	0.07	<0.01	0.008	0.15	12.9	12.5	1.06	689	0.26	0.02	<0.05	
167381	60.9	9.71	15.65	0.23	0.14	0.01	0.033	0.02	2.4	67.7	3.34	1570	0.17	0.03	0.09	
167382	39.5	22.7	8.35	0.41	0.05	0.01	0.052	<0.01	3.5	17.2	0.50	1000	1.12	0.01	0.09	
167383	65.5	23.4	1.26	0.40	<0.02	0.01	0.065	<0.01	0.8	0.8	1.17	748	0.35	0.01	<0.05	
167384	39.8	11.65	13.70	0.37	0.02	0.01	0.031	2.0	95.0	95.0	1.59	543	2.85	<0.01	<0.05	
167385	73.2	8.52	14.80	0.13	<0.02	0.01	0.014	<0.01	1.5	39.1	1.24	778	4.81	<0.01	<0.05	
167386	7.3	10.35	17.10	0.10	0.18	0.03	0.021	0.02	3.1	67.9	2.53	672	22.6	0.01	<0.05	
167387	64.9	3.80	12.65	0.12	0.20	0.01	0.016	0.06	25.5	44.5	1.49	478	1.24	0.03	0.12	
167388	1550	0.81	1.18	<0.05	0.07	0.01	0.018	0.02	1.7	4.9	0.14	82	0.24	0.02	<0.05	
167251	22.6	4.14	8.43	0.09	0.33	<0.01	0.012	0.10	11.4	23.5	1.24	855	0.34	0.03	0.10	
167252	1040	2.38	1.95	<0.05	0.09	<0.01	0.027	0.01	6.2	2.6	0.19	99	2.24	0.03	0.07	
167253	80.4	5.47	7.04	0.11	0.16	<0.01	0.007	0.01	0.7	33.4	2.56	824	0.20	0.03	<0.05	

\*\*\*\*\* See Appendix Page for comments regarding this certificate \*\*\*\*\*



ALS Canada Ltd.  
 2103 Dollarton Hwy  
 North Vancouver BC V7H 0A7  
 Phone: +1 604 984 0221 Fax: +1 604 984 0218  
 www.alsglobal.com/geochemistry

TO: METAL RESOURCES INC.  
 580 HORNBY STREET  
 VANCOUVER BC V6C 3B6

Page: 3 - C  
 Total # Pages: 4 (A - D)  
 Plus Appendix Pages  
 Finalized Date: 26-MAY-2021  
 Account: RESMET1

CERTIFICATE OF ANALYSIS TB21117682

Project: Gowganda

Sample Description	Method Analyte Units LOD	AU-ME-T143		AU-ME-T143		AU-ME-T143		AU-ME-T143		AU-ME-T143		AU-ME-T143		AU-ME-T143		AU-ME-T143		AU-ME-T143		AU-ME-T143		AU-ME-T143	
		NI ppm	P ppm	Pb ppm	Rb ppm	Re ppm	S %	SD ppm	Sc ppm	Se ppm	Sn ppm	Sr ppm	Ta ppm	Tb ppm	Ti ppm	Th ppm	Tl %						
167329		70.1	750	2.0	2.0	1.5	0.004	0.07	1.69	0.05	3.5	3.4	0.5	0.2	19.4	<0.01	0.06	<0.2	<0.005				
167330		2.1	170	7.6	0.1	0.004	0.07	0.79	0.13	0.2	0.2	0.5	0.6	6.2	<0.01	0.54	<0.2	<0.005					
167331		60.8	520	4.6	5.8	0.001	0.11	0.13	0.11	7.3	0.5	0.5	0.6	12.6	<0.01	0.03	8.4	0.163					
167332		9.8	190	0.4	0.2	<0.001	<0.01	<0.05	<0.01	0.7	<0.2	<0.2	<0.2	11.4	<0.01	<0.01	<0.2	<0.005					
167333		4.6	40	2.0	2.0	0.6	<0.001	<0.05	<0.01	0.3	<0.2	<0.2	<0.2	5.7	<0.01	<0.01	<0.2	<0.005					
167334		35.5	450	1.1	1.1	4.5	0.001	0.06	0.16	4.0	0.7	0.7	0.2	9.7	<0.01	0.03	6.6	0.006					
167335		46.3	580	1.2	4.5	4.5	<0.001	0.11	0.08	4.4	0.4	0.2	0.2	6.4	<0.01	0.02	8.4	0.009					
167363		19.7	400	1.0	4.0	4.0	<0.001	0.09	0.03	3.8	0.2	0.2	<0.2	8.3	<0.01	0.02	2.3	<0.005					
167364		40.8	800	3.3	2.3	2.3	<0.001	0.33	0.43	2.6	0.6	0.6	<0.2	13.9	<0.01	0.26	1.0	<0.005					
167365		23.0	450	2.4	3.5	3.5	<0.001	0.10	0.10	4.0	0.3	0.3	<0.2	14.8	<0.01	0.11	1.0	<0.005					
167366		32.8	1110	6.2	2.9	2.9	0.002	0.15	0.25	19.7	0.9	0.9	0.8	10.5	0.01	0.04	1.8	0.422					
167367		46.2	390	2.5	5.4	5.4	<0.001	<0.01	<0.01	12.7	<0.2	<0.2	0.3	3.7	<0.01	0.01	0.5	0.006					
167368		34.0	700	7.4	5.0	5.0	0.001	1.74	1.15	3.2	0.4	0.4	<0.2	107.5	<0.01	0.15	1.5	<0.005					
167369		45.9	430	5.0	1.0	1.0	<0.001	0.14	0.12	7.8	0.4	0.4	<0.2	21.6	<0.01	0.01	1.5	0.003					
167370		24.3	490	6.3	5.2	5.2	0.001	0.09	<0.05	3.5	0.4	0.4	0.3	13.8	<0.01	0.03	2.3	0.240					
167371		68.8	740	1.7	5.7	5.7	0.001	0.04	0.05	11.8	0.3	0.3	0.3	5.7	<0.01	<0.01	1.6	0.127					
167372		66.2	960	1.3	2.4	2.4	0.001	0.09	0.17	7.4	0.3	0.3	0.4	36.9	<0.01	0.02	1.7	0.089					
167373		73.4	910	1.9	2.9	2.9	<0.001	0.14	0.21	10.7	0.3	0.3	0.6	29.2	<0.01	0.04	1.6	0.118					
167374		72.1	1860	2.2	2.6	2.6	0.001	0.10	0.22	19.5	0.6	0.6	0.7	58.8	<0.01	0.02	1.8	0.258					
167375		74.2	580	3.8	2.1	2.1	0.001	0.72	0.24	13.2	0.5	0.5	<0.2	31.1	<0.01	0.02	0.5	<0.005					
39247		67.2	620	5.8	8.6	8.6	0.001	0.03	0.26	11.0	0.4	0.4	1.0	74.9	<0.01	0.04	12.1	0.227					
39248		61.3	640	11.4	9.3	9.3	0.001	0.04	0.33	11.2	0.3	0.3	0.9	98.9	<0.01	0.05	11.9	0.244					
39249		37.1	440	0.4	8.1	8.1	0.001	0.09	0.06	5.5	0.5	0.5	0.2	24.5	<0.01	0.01	<0.2	0.431					
39250		51.3	1310	2.2	6.5	6.5	0.001	0.25	0.70	5.9	0.2	0.2	<0.2	78.6	<0.01	0.02	2.2	0.005					
167376		8.7	60	2.6	0.5	0.5	<0.001	0.54	0.13	6.7	0.3	0.3	<0.2	170.0	<0.01	0.01	0.3	<0.005					
167377		43.4	220	30.5	3.0	3.0	0.001	2.47	1.71	19.1	1.1	1.1	<0.2	9.9	0.01	0.04	0.3	0.006					
167378		4.7	10	5.1	0.1	0.1	<0.001	1.48	0.48	0.8	0.4	0.4	<0.2	27.2	<0.01	0.01	<0.2	<0.005					
167379		9.4	530	1.3	1.9	1.9	<0.001	0.07	0.07	3.7	0.3	0.3	<0.2	9.3	<0.01	<0.01	0.9	<0.005					
167380		167380	550	4.4	7.8	7.8	<0.001	0.03	0.03	2.8	<0.2	<0.2	<0.2	61.4	<0.01	<0.01	2.7	<0.005					
167381		139.0	830	1.3	7.9	7.9	<0.001	0.36	0.05	15.4	0.4	0.4	0.4	16.6	<0.01	0.03	<0.2	0.426					
167382		30.2	790	0.7	0.2	0.2	<0.001	0.41	0.08	11.3	1.2	1.2	<0.2	74.3	<0.01	0.06	<0.2	0.017					
167383		6.3	320	0.5	0.1	0.1	0.001	0.13	0.05	0.9	0.9	0.9	0.2	9.5	<0.01	0.51	<0.2	<0.005					
167384		42.3	400	9.2	0.3	0.3	0.001	0.06	<0.05	15.7	0.2	0.2	0.2	38.2	<0.01	0.05	<0.2	0.004					
167385		25.0	340	3.5	1.9	1.9	0.004	<0.01	0.09	2.2	0.2	0.2	<0.2	27.9	<0.01	0.04	<0.2	<0.005					
167386		60.2	450	3.8	1.9	1.9	<0.001	0.11	0.07	9.7	0.2	0.2	0.6	4.6	<0.01	0.05	4.4	0.053					
167387		53.9	640	5.5	5.9	5.9	0.001	0.06	0.10	6.8	0.3	0.3	0.8	8.0	<0.01	0.04	11.1	0.117					
167388		6.3	80	0.4	1.0	1.0	<0.001	0.10	0.05	5.1	0.4	0.4	0.2	5.1	<0.01	0.01	0.8	<0.005					
167251		42.3	630	1.3	18.3	18.3	<0.001	0.04	0.11	5.8	<0.2	<0.2	0.4	22.4	<0.01	0.01	2.0	0.168					
167252		25.8	100	1.0	0.3	0.3	<0.001	0.13	0.13	0.8	0.7	0.7	0.2	10.9	<0.01	0.02	1.6	0.029					
167253		96.0	210	0.8	1.2	1.2	0.001	0.19	<0.05	3.8	0.7	0.7	<0.2	9.5	<0.01	0.01	<0.2	0.195					

\*\*\*\*\* See Appendix Page for comments regarding this certificate \*\*\*\*\*



ALS Canada Ltd.  
 2103 Doolittle Hwy  
 North Vancouver BC V7H 0A7  
 Phone: +1 604 984 0221 Fax: +1 604 984 0218  
 www.alsglobal.com/geochemistry

To: **IMETAL RESOURCES INC.**  
**580 HORNBY STREET**  
**VANCOUVER BC V6C 3B6**

Project: Gowganda

**CERTIFICATE OF ANALYSIS TB21117682**

Page: 3 - D  
 Total # Pages: 4 (A - D)  
 Plus Appendix Pages  
 Finalized Date: 26-MAY-2021  
 Account: RESMETI

Sample Description	Method Analyte Units LOD	AUME-TL43		AUME-TL43		AUME-TL43		AUME-TL43		AUME-TL43		AUME-TL43		Cu-OC46		Au-CRA21	
		TI	U	V	W	Y	Zn	Zr	Cu	%	Au	ppm	ppm	ppm	ppm	ppm	ppm
167329		<0.02	<0.05	94	<0.05	5.89	94	4.0									
167330		0.03	<0.05	2	4.09	1.90	3	<0.5									
167331		0.04	2.47	50	0.29	10.60	63	17.6									
167332		<0.02	<0.05	12	<0.05	0.34	12	<0.5									
167333		<0.02	<0.05	3	<0.05	0.53	4	<0.5									
167334		0.03	2.60	38	0.05	10.00	28	15.0									
167335		0.04	2.77	52	0.06	9.36	39	13.2									
167363		0.02	0.29	20	0.07	4.53	34	9.0									
167364		0.02	0.23	25	0.05	2.88	22	9.9									
167365		0.02	0.23	16	0.05	5.64	14	9.4									
167366		0.25	0.34	260	0.78	23.8	140	20.3									
167367		<0.02	0.18	149	0.06	4.15	41	6.2									
167368		0.30	0.32	21	<0.05	7.10	48	18.0									
167369		<0.02	0.32	69	0.54	5.31	60	8.4									
167370		0.03	0.52	196	0.12	8.36	85	13.0									
167371		0.02	0.34	107	0.91	7.76	79	4.8									
167372		<0.02	0.34	77	0.45	6.73	74	11.5									
167373		0.02	0.29	104	0.63	7.59	89	10.0									
167374		0.02	0.38	206	1.29	16.45	111	14.1									
167375		0.11	0.08	101	<0.05	4.33	106	4.4									
39247		0.06	3.07	57	0.59	12.30	96	21.0									
39248		0.05	3.35	57	0.75	12.70	90	19.9									
39249		<0.02	<0.05	113	0.07	8.49	75	4.7									
39250		0.14	0.46	48	0.07	7.78	60	2.4									
167376		0.02	0.12	8	<0.05	10.10	16	1.9									
167377		0.37	0.09	129	0.15	2.70	76	5.6									
167378		0.04	<0.05	6	<0.05	1.14	5	0.5									
167379		0.02	0.09	15	<0.05	3.70	52	6.8									
167380		0.03	0.24	28	<0.05	5.28	58	3.5									
167381		<0.02	<0.05	166	0.07	9.97	120	4.9									
167382		<0.02	<0.05	68	0.14	9.94	69	1.7									
167383		<0.02	<0.05	9	2.69	3.36	39	0.6									
167384		<0.02	0.08	117	0.38	4.16	116	1.7									
167385		0.02	0.06	40	1.13	2.70	63	<0.5									
167386		0.03	1.32	116	0.23	4.48	96	7.2									
167387		0.05	3.29	58	0.29	9.08	78	9.1									
167388		<0.02	0.43	7	<0.05	1.11	5	2.3									
167251		0.02	0.25	69	0.37	7.55	57	10.3									
167252		<0.02	0.13	30	0.76	1.06	7	2.4									
167253		<0.02	<0.05	94	<0.05	4.10	75	5.4									

\*\*\*\*\* See Appendix Page for comments regarding this certificate \*\*\*\*\*





ALS Canada Ltd.  
 2103 Dollarton Hwy.  
 North Vancouver BC V7H 0A7  
 Phone: +1 604 984 0221 Fax: +1 604 984 0218  
 www.alsglobal.com/geochemistry

To: **METAL RESOURCES INC.**  
**580 HORNBY STREET**  
**VANCOUVER BC V6C 3B6**

Page: 4 - A  
 Total # Pages: 4 (A - D)  
 Plus Appendix Pages  
 Finalized Date: 26-MAY-2021  
 Account: RESMETI

Project: Cowganda

**CERTIFICATE OF ANALYSIS TB21117682**

Sample Description	Method Analyte Units LOD	Au		Ag		Al		As		B		Ba		Be		Bi		Ca		Cd		Ce		Co		Cr		Cs		
		Rec'd Wt. kg	ppm	ppm	ppm	%	ppm	ppm	ppm	ppm	ppm	ppm	ppm	ppm	ppm	ppm	ppm	ppm	%	ppm	ppm	ppm	ppm	ppm	ppm	ppm	ppm	ppm	ppm	ppm
167254	1.48	0.004	0.02	2.35	0.7	<10	80	1.02	0.05	3.47	0.03	59.1	33.9	254	0.51															
167255	1.40	0.003	0.08	1.62	3.6	<10	40	0.36	0.09	0.82	0.05	34.7	32.9	3	1.33															
167256	0.97	0.011	0.03	2.11	3.0	<10	10	0.52	0.07	1.41	0.03	30.9	31.9	381	0.54															
167257	1.30	0.025	0.19	0.23	10.7	<10	30	0.24	0.19	1.29	0.06	11.75	13.6	8	0.16															
167258	1.13	0.015	0.02	2.28	3.4	<10	60	0.46	0.11	1.09	0.03	23.3	20.8	128	0.20															
167259	1.50	0.167	0.35	2.43	11.0	<10	20	0.38	0.79	2.85	0.03	14.80	30.2	21	0.25															
167260	1.47	0.061	0.07	2.68	4.3	<10	30	0.85	0.30	0.69	0.02	38.4	24.3	101	0.95															
167261	2.88	0.004	0.03	1.73	81.1	<10	20	0.21	0.02	5.49	0.05	0.81	83.6	898	0.38															
167262	0.97	0.001	0.07	0.18	9.1	<10	10	0.36	0.03	3.74	0.07	6.18	6.3	6	0.05															
167263	1.33	0.009	0.12	2.48	6.5	<10	10	0.19	0.05	2.96	0.03	5.98	19.7	45	<0.05															
167264	1.50	0.005	0.14	0.05	10.7	<10	10	<0.05	0.09	1.24	0.01	0.68	11.5	9	<0.05															
167265	1.15	0.007	0.12	5.63	2.1	<10	20	0.27	0.84	0.31	0.04	11.65	23.6	119	0.08															
167266	1.80	0.809	0.33	1.64	0.9	<10	10	0.51	0.39	0.20	<0.01	37.2	14.9	77	0.35															

\*\*\*\*\* See Appendix Page for comments regarding this certificate \*\*\*\*\*



ALS Canada Ltd.  
 2103 Dollarton Hwy  
 North Vancouver BC V7H 0A7  
 Phone: +1 604 984 0221 Fax: +1 604 984 0218  
 www.alsglobal.com/geochemistry

To: **METAL RESOURCES INC.**  
**580 HORNBY STREET**  
**VANCOUVER BC V6C 3R6**

Page: 4 - B  
 Total # Pages: 4 (A - D)  
 Plus Appendix Pages  
 Finalized Date: 26-MAY-2021  
 Account: RESMETI

Project: Gowganda  
**CERTIFICATE OF ANALYSIS TB21117682**

Sample Description	Method Analyte Units LOD	AU/ME-T143	AU/ME-T143	AU/ME-T143	AU/ME-T143	AU/ME-T143	AU/ME-T143	AU/ME-T143	AU/ME-T143	AU/ME-T143	AU/ME-T143	AU/ME-T143	AU/ME-T143	AU/ME-T143	AU/ME-T143	AU/ME-T143	AU/ME-T143	AU/ME-T143	AU/ME-T143	AU/ME-T143
		Cu	Fe	Ca	Co	Hf	Hg	In	K	La	Li	Mg	Mn	Mo	Na	Nb				
		ppm	%	ppm	ppm	ppm	ppm	ppm	%	ppm	ppm	%	ppm	ppm	%	ppm				
167254		70.1	6.46	8.90	0.11	0.02	<0.01	0.034	0.23	27.9	29.2	1.38	603	0.48	0.02	<0.05				
167255		118.5	7.67	12.60	0.19	0.41	<0.01	0.037	0.08	15.5	15.8	1.18	728	0.66	0.06	0.17				
167256		46.1	4.20	11.60	0.14	0.25	<0.01	0.014	0.02	13.9	26.1	2.34	689	0.56	0.04	0.05				
167257		22.8	3.64	0.84	<0.05	0.46	0.02	0.010	0.13	5.7	1.0	0.27	747	2.20	0.03	<0.05				
167258		56.0	6.32	9.95	0.07	0.10	0.01	0.015	0.09	11.0	20.6	1.59	512	0.46	0.02	<0.05				
167259		40.0	7.96	7.93	0.06	0.44	0.04	0.024	0.09	7.2	29.6	1.03	897	1.79	0.02	<0.05				
167260		58.2	7.20	14.30	0.11	0.33	<0.01	0.030	0.04	18.7	25.5	1.79	759	1.23	0.03	0.07				
167261		43.0	5.99	3.82	0.05	<0.02	<0.01	0.018	<0.01	0.4	46.6	7.41	920	0.06	0.01	<0.05				
167262		51.7	15.60	0.66	0.30	<0.02	0.02	0.031	<0.01	3.2	1.0	0.06	504	1.30	0.07	<0.05				
167263		13.0	15.90	10.65	0.24	0.03	0.07	0.040	<0.01	3.2	7.8	1.12	459	0.76	<0.01	0.06				
167264		69.0	4.52	0.31	<0.05	<0.02	0.02	0.018	<0.01	0.3	0.1	0.02	293	0.99	<0.01	<0.05				
167265		32.8	10.05	18.00	0.21	0.05	0.03	0.061	0.01	4.9	80.2	4.30	1080	2.96	0.01	0.06				
167266		>10000	5.47	8.74	0.08	0.61	0.01	0.217	0.07	16.9	31.7	1.30	295	0.85	0.03	<0.05				

\*\*\*\*\* See Appendix Page for comments regarding this certificate \*\*\*\*\*



ALS Canada Ltd.  
 2103 Dollarton Hwy  
 North Vancouver BC V7H 0A7  
 Phone: +1 604 984 0221 Fax: +1 604 984 0218  
 www.alsglobal.com/geochemistry

TO: **IMETAL RESOURCES INC.**  
**580 HORNBY STREET**  
**VANCOUVER BC V6C 3B6**

Page: 4 - C  
 Total # Pages: 4 (A - D)  
 Plus Appendix Pages  
 Finalized Date: 26-MAY-2021  
 Account: RESMETI

Project: Gowganda

**CERTIFICATE OF ANALYSIS TB21117682**

Sample Description	Method Analyte Units LOD	AU/ME-T143 Ni ppm	AU/ME-T143 P ppm	AU/ME-T143 Pb ppm	AU/ME-T143 Bi ppm	AU/ME-T143 Mn ppm	AU/ME-T143 S %	AU/ME-T143 Sb ppm	AU/ME-T143 Sc ppm	AU/ME-T143 Se ppm	AU/ME-T143 Sn ppm	AU/ME-T143 Sr ppm	AU/ME-T143 Ta ppm	AU/ME-T143 Te ppm	AU/ME-T143 Th ppm	AU/ME-T143 Ti %
167254		105.0	2810	1.7	18.5	0.001	<0.01	0.22	9.2	<0.2	<0.2	131.5	<0.01	<0.01	1.7	<0.005
167255		17.9	740	9.4	8.5	0.001	0.07	0.26	8.4	0.3	0.8	20.2	0.01	0.01	3.2	0.398
167256		185.5	940	3.5	1.1	0.001	0.05	0.12	5.0	<0.2	0.3	40.5	<0.01	0.03	2.1	0.192
167257		24.2	450	4.6	4.7	0.002	1.47	0.38	2.4	0.2	<0.2	38.0	<0.01	0.48	1.9	<0.005
167258		78.4	800	1.9	6.8	<0.001	0.08	0.16	6.0	0.2	<0.2	36.6	<0.01	0.02	2.0	<0.005
167259		29.6	440	7.9	3.4	<0.001	1.62	0.33	4.2	0.4	<0.2	52.3	<0.01	0.11	2.0	<0.005
167260		52.3	680	4.1	2.7	0.001	0.51	0.43	8.4	0.4	0.5	15.1	<0.01	0.10	2.5	0.130
167261		11.40	60	0.6	0.4	<0.001	0.34	0.69	16.3	0.7	<0.2	141.5	<0.01	0.02	<0.2	<0.005
167262		8.9	520	1.4	0.7	<0.001	0.19	0.81	0.7	0.2	0.2	22.9	<0.01	0.02	<0.2	<0.005
167263		33.8	480	2.6	0.8	0.001	1.07	0.12	8.4	0.8	<0.2	18.6	<0.01	0.14	<0.2	0.007
167264		13.0	100	5.9	0.1	<0.001	1.51	0.33	0.5	0.4	<0.2	5.2	<0.01	0.79	<0.2	<0.005
167265		87.3	970	3.7	0.4	0.001	0.10	0.07	19.8	0.3	<0.2	12.5	<0.01	0.48	0.2	0.007
167266		45.5	470	1.4	4.6	<0.001	1.44	0.08	3.5	5.1	0.3	4.7	<0.01	0.03	7.6	0.007

\*\*\*\*\* See Appendix Page for comments regarding this certificate \*\*\*\*\*



ALS Canada Ltd.  
 2103 Dollarton Hwy  
 North Vancouver BC V7H 0A7  
 Phone: +1 604 984 0221 Fax: +1 604 984 0218  
 www.alsglobal.com/geochemistry

To: **IMETAL RESOURCES INC.**  
**580 HORNBY STREET**  
**VANCOUVER BC V6C 3B6**

Page: 4 - D  
 Total # Pages: 4 (A - D)  
 Plus Appendix Pages  
 Finalized Date: 26-MAY-2021  
 Account: RESMETI

Project: Gowganda

**CERTIFICATE OF ANALYSIS TB21117682**

Sample Description	Method Analyte Units LOD	AUME-TL43		AUME-TL43		AUME-TL43		AUME-TL43		AUME-TL43		AUME-TL43		Cu-OC46		Au-CRA21	
		TI	U	V	W	Y	Zn	Zr	Cu	Au	%	Au					
167254	0.07	0.30	73	<0.05	10.05	62	0.7										
167255	0.06	0.66	251	0.13	18.45	97	19.6										
167256	<0.02	0.39	81	0.54	6.76	80	9.2										
167257	0.05	0.39	4	0.05	4.71	26	17.3										
167258	0.03	0.44	63	0.34	5.68	76	4.1										
167259	0.11	0.38	32	3.04	8.31	70	17.5										
167260	0.02	0.40	79	1.17	8.60	65	13.5										
167261	<0.02	<0.05	63	<0.05	3.39	50	<0.5										
167262	<0.02	<0.05	2	3.15	8.18	4	<0.5										
167263	0.02	<0.05	56	0.10	4.88	41	0.7										
167264	<0.02	<0.05	2	<0.05	0.73	2	<0.5										
167265	<0.02	<0.05	133	<0.05	3.89	95	1.7										
167266	0.03	2.60	48	0.07	6.74	36	19.9							2.15			

\*\*\*\*\* See Appendix Page for comments regarding this certificate \*\*\*\*\*





ALS Canada Ltd.  
 2103 Dollarton Hwy  
 North Vancouver BC V7H 0A7  
 Phone: +1 604 984 0221 Fax: +1 604 984 0218  
 www.alsglobal.com/geochemistry

To: **IMETAL RESOURCES INC.**  
**580 HORNBY STREET**  
**VANCOUVER BC V6C 3R6**

Page: Appendix 1  
 Total # Appendix Pages: 1  
 Finalized Date: 26-MAY-2021  
 Account: RESMETI

Project: Gowganda

**CERTIFICATE OF ANALYSIS TB21117682**

**CERTIFICATE COMMENTS**

**LABORATORY ADDRESSES**

Applies to Method:	Processed at ALS Thunder Bay located at 645 Norah Crescent, Thunder Bay, ON, Canada	PUL-31
	CRU-31	LOG-22
	PUL-QC	WEI-21
	SPL-21	
Applies to Method:	Processed at ALS Vancouver located at 2103 Dollarton Hwy, North Vancouver, BC, Canada.	ME-OC46
	AU-GRA21	Cu-OC46
	AUME-TL43	

--	--



ALS Canada Ltd.  
 2103 Dollarton Hwy  
 North Vancouver BC V7H 0A7  
 Phone: +1 604 984 0221 Fax: +1 604 984 0218  
 www.alsglobal.com/geochemistry

To: **METAL RESOURCES INC.**  
**580 HORNBY STREET**  
**VANCOUVER BC V6C 3R6**

Page: 1  
 Total # Pages: 2 (A - D)  
 Plus Appendix Pages  
 Finalized Date: 26-MAY-2021  
 This copy reported on 3-JUN-2021  
 Account: RESMETI

**CERTIFICATE TB21117686**

Project: Cowganda

This report is for 28 samples of Rock submitted to our lab in Thunder Bay, ON, Canada on 11-MAY-2021.  
 The following have access to data associated with this certificate:  
 TIM HENNEBERRY  
 ALEX PLESSON

**SAMPLE PREPARATION**

ALS CODE	DESCRIPTION
WEI-21	Received Sample Weight
LOG-22	Sample log/in - Rcd w/o BarCode
CRU-QC	Crushing QC Test
PUL-QC	Pulverizing QC Test
CRU-31	Fine crushing - 70% <2mm
SPL-21	Split sample - riffle splitter
PUL-31	Pulverize up to 250g 85% <75 um

**ANALYTICAL PROCEDURES**

ALS CODE	DESCRIPTION	INSTRUMENT
Au-GRA21	Au 30g FA-GRAV finish	WST-SIM
AUME-TL43	25g Trace Au + Multi Element PKG	

This is the Final Report and supersedes any preliminary report with this certificate number. Results apply to samples as submitted. All pages of this report have been checked and approved for release.  
 \*\*\*\*\* See Appendix Page for comments regarding this certificate \*\*\*\*\*

Signature:

Saa Traxler, General Manager, North Vancouver



ALS Canada Ltd.  
 2103 Dollarton Hwy  
 North Vancouver BC V7H 0A7  
 Phone: +1 604 984 0221 Fax: +1 604 984 0218  
 www.alsglobal.com/geochemistry

TO: **IMETAL RESOURCES INC.**  
**580 HORNBY STREET**  
**VANCOUVER BC V6C 3B6**

Page: 2 - A  
 Total # Pages: 2 (A - D)  
 Plus Appendix Pages  
 Finalized Date: 26-MAY-2021  
 Account: RESMETI

Project: Gowganda

**CERTIFICATE OF ANALYSIS TB21117686**

Sample Description	Method	Analyte	Units	LOD	Au		Ag		Al		As		B		Ba		Be		Bi		Ca		Cd		Ce		Co		Cr		Cs		
					g	ppm	g	ppm	%	ppm	g	ppm	g	ppm	g	ppm	g	ppm	g	ppm	g	ppm	g	ppm	g	ppm	g	ppm	g	ppm	g	ppm	g
167351	WEI-21	Au	g	0.02	0.646	0.20	0.55	13.6	<10	30	0.24	0.19	1.95	0.05	9.51	14.9	25	0.20															
167352	1.40	0.214	0.12	0.12	0.49	2.6	2.6	<10	300	0.33	0.18	2.75	0.05	31.6	16.4	37	0.17																
167353	0.79	0.001	0.11	4.70	2.4	10	10	<10	30	0.72	0.03	2.10	0.04	14.25	45.3	114	2.44																
167354	1.99	>1.00	0.29	0.12	0.6	0.6	<10	210	210	<0.05	0.03	0.14	<0.01	1.54	1.4	25	<0.05																
167355	2.61	0.002	0.05	1.13	5.6	5.6	<10	10	10	0.19	0.05	0.92	0.05	17.15	7.8	27	0.22																
167356	1.44	0.003	0.02	0.25	0.5	4.3	<10	250	40	0.16	0.06	1.20	0.05	20.5	7.2	7	0.17																
167357	0.56	0.002	0.01	3.02	4.3	67.2	<10	20	20	0.34	0.07	0.37	0.02	22.3	15.5	60	0.26																
167358	1.35	0.678	0.34	0.02	3.10	3.2	<10	50	50	0.40	0.10	2.13	0.07	7.13	43.4	123	0.31																
167359	1.07	0.004	0.02	1.11	3.2	3.2	<10	50	50	0.27	0.15	1.11	0.03	30.1	11.4	19	0.37																
167360	Not Record																																
167361	0.72	0.017	0.06	1.05	5.3	5.3	<10	60	60	0.59	0.26	0.50	0.03	28.8	16.9	27	0.31																
167362	0.95	0.114	0.06	0.28	8.6	8.6	<10	110	110	0.16	0.38	2.11	0.06	8.18	17.8	19	0.09																
167001	0.60	<0.001	<0.01	3.45	0.3	0.3	<10	20	20	0.19	0.01	1.75	0.04	15.00	30.7	54	0.20																
167002	1.92	<0.001	0.02	0.78	1.2	1.2	<10	10	10	0.16	0.06	1.20	0.03	1.92	5.2	6	0.12																
167003	1.76	>1.00	2.38	0.10	1.3	1.3	<10	570	570	0.10	0.17	1.73	0.02	5.14	5.2	29	0.07																
167004	1.90	0.004	0.01	1.22	1.2	1.2	<10	70	70	0.54	0.02	7.10	0.10	30.8	24.1	125	0.37																
167005	1.68	0.615	0.24	1.20	69.6	69.6	<10	80	80	0.20	0.05	0.55	0.04	3.83	7.5	20	0.20																
167006	0.66	0.001	0.01	0.04	4.8	4.8	<10	<10	<10	0.21	0.01	0.89	0.02	1.68	1.8	12	<0.05																
167007	0.67	0.008	0.01	1.19	0.5	0.5	<10	20	20	0.34	0.02	0.78	0.03	19.50	18.7	44	0.20																
167008	0.84	>1.00	0.78	0.06	0.9	0.9	<10	170	170	<0.05	0.06	0.04	0.01	1.16	1.0	23	<0.05																
167009	0.55	>1.00	0.51	0.05	0.7	0.7	<10	130	130	<0.05	0.02	0.08	<0.01	0.95	0.6	20	<0.05																
167010	0.47	>1.00	0.36	0.03	0.3	0.3	<10	80	80	<0.05	0.01	0.01	<0.01	0.44	0.3	18	<0.05																
167011	0.30	0.865	0.21	0.05	0.3	0.3	<10	130	130	<0.05	0.01	0.05	<0.01	0.58	0.5	19	<0.05																
167012	0.28	>1.00	0.25	0.05	0.3	0.3	<10	200	200	<0.05	0.01	0.05	<0.01	0.53	0.5	18	<0.05																
167013	0.83	0.011	0.01	1.25	0.4	0.4	<10	30	30	0.32	0.02	0.73	0.02	22.2	20.0	41	0.23																
167014	0.40	>1.00	0.31	0.44	0.9	0.9	<10	30	30	0.09	0.02	0.16	0.01	10.10	5.0	45	<0.05																
167015	0.38	>1.00	2.07	0.06	0.3	0.3	<10	180	180	<0.05	0.04	0.02	0.01	1.07	0.8	18	<0.05																
167016	0.73	0.552	0.11	0.70	0.9	0.9	<10	30	30	0.16	0.04	0.22	0.01	13.35	10.4	47	0.10																

\*\*\*\*\* See Appendix Page for comments regarding this certificate \*\*\*\*\*





ALS Canada Ltd.  
 2103 Dollarton Hwy.  
 North Vancouver BC V7H 0A7  
 Phone: +1 604 984 0221 Fax: +1 604 984 0218  
 www.alsglobal.com/geochemistry

To: METAL RESOURCES INC.  
 580 HORNBY STREET  
 VANCOUVER BC V6C 3B6

Page: 2 - B  
 Total # Pages: 2 (A - D)  
 Plus Appendix Pages  
 Finalized Date: 26-MAY-2021  
 Account: RESMETT

Project: Cowganda

CERTIFICATE OF ANALYSIS TB21117686

Sample Description	Method Analyse Units LOD	AuME-TL43	AgME-TL43	CaME-TL43	CeME-TL43	HfME-TL43	HgME-TL43	InME-TL43	KME-TL43	LaME-TL43	LiME-TL43	MgME-TL43	MnME-TL43	MoME-TL43	NaME-TL43	NbME-TL43
167351	Cu	33.8	3.79	2.00	<0.05	0.40	0.02	0.016	0.06	4.3	5.4	0.58	717	2.06	0.04	<0.05
167352	Fa	108.5	2.40	1.16	0.06	0.03	0.01	0.016	0.13	13.3	4.9	1.00	735	4.52	0.01	<0.05
167353	%	272	11.65	16.80	0.16	0.23	<0.01	0.041	0.01	6.2	48.1	4.88	1560	0.13	0.01	0.07
167354	ppm	288	0.57	0.56	<0.05	0.03	<0.01	<0.005	<0.01	0.7	1.4	0.09	64	1.63	0.01	<0.05
167355	ppm	17.4	2.56	5.69	0.08	0.38	<0.01	0.010	0.05	7.6	9.8	0.57	435	0.28	0.03	0.15
167356	ppm	22.0	1.07	0.88	<0.05	0.16	<0.01	<0.005	0.10	10.6	1.7	0.12	544	0.42	0.02	<0.05
167357	ppm	14.4	9.32	11.50	0.14	0.20	<0.01	0.015	0.03	10.8	28.1	1.98	667	0.82	0.02	<0.05
167358	ppm	51.8	8.54	16.95	0.15	0.16	0.02	0.041	0.03	3.2	28.7	2.72	971	1.98	0.03	<0.05
167359	ppm	41.6	2.68	4.08	0.05	0.17	<0.01	0.014	0.10	14.9	10.2	0.56	341	0.41	0.03	0.05
167360	ppm															
167361	ppm	11.0	2.74	3.67	0.06	0.09	0.01	0.008	0.14	12.4	13.2	0.47	317	1.12	0.02	<0.05
167362	ppm	8.9	2.69	1.21	<0.05	0.20	0.01	0.018	0.03	3.1	3.3	0.51	832	2.54	0.04	<0.05
167001	ppm	51.7	6.50	7.93	0.07	0.07	<0.01	0.020	0.09	5.3	61.5	1.75	774	0.14	0.02	0.06
167002	ppm	154.0	17.30	5.85	0.40	<0.02	0.01	0.019	0.01	0.6	8.0	0.31	384	0.76	<0.01	<0.05
167003	ppm	68.2	0.79	0.32	<0.05	<0.02	0.05	0.008	0.02	2.4	1.5	0.43	408	0.19	0.01	<0.05
167004	ppm	4.7	4.02	3.29	0.06	0.03	0.01	0.033	0.15	14.0	18.7	3.10	1180	0.12	0.01	<0.05
167005	ppm	71.2	18.40	4.07	0.24	<0.02	0.03	0.027	0.01	1.5	15.5	0.56	419	2.45	<0.01	<0.05
167006	ppm	3.7	16.50	0.40	0.55	<0.02	<0.01	0.012	<0.01	0.7	0.2	0.02	170	0.23	<0.01	<0.05
167007	ppm	14.8	3.98	6.90	0.06	0.26	<0.01	0.014	0.05	8.6	11.4	0.87	399	0.31	0.04	0.11
167008	ppm	1345	0.71	0.35	<0.05	0.02	0.01	0.006	<0.01	0.6	0.6	0.04	45	0.70	0.01	<0.05
167009	ppm	154.5	0.37	0.28	<0.05	0.02	<0.01	<0.005	<0.01	0.5	0.6	0.03	43	0.54	0.01	<0.05
167010	ppm	10.9	0.29	0.15	<0.05	<0.02	<0.01	<0.005	<0.01	0.2	0.3	0.02	33	0.16	0.01	<0.05
167011	ppm	63.3	0.34	0.26	<0.05	0.02	<0.01	<0.005	<0.01	0.3	0.5	0.03	42	0.44	0.01	<0.05
167012	ppm	123.0	0.35	0.23	<0.05	<0.02	<0.01	<0.005	<0.01	0.3	0.4	0.03	44	0.28	0.01	<0.05
167013	ppm	6.8	3.85	7.07	0.06	0.28	<0.01	0.013	0.05	9.9	12.5	0.94	418	0.33	0.04	0.07
167014	ppm	106.0	1.49	1.99	<0.05	0.09	<0.01	0.006	<0.01	4.5	4.2	0.32	162	0.40	0.03	0.05
167015	ppm	630	0.48	0.31	<0.05	0.02	0.01	0.007	<0.01	0.5	0.6	0.04	41	0.43	0.01	<0.05
167016	ppm	39.3	2.01	3.65	<0.05	0.14	<0.01	0.008	0.02	6.3	6.6	0.53	233	0.35	0.03	0.10

\*\*\*\*\* See Appendix Page for comments regarding this certificate \*\*\*\*\*





ALS Canada Ltd.  
 2103 Dollarton Hwy  
 North Vancouver BC V7H 0A7  
 Phone: +1 604 984 0221 Fax: +1 604 984 0218  
 www.alsglobal.com/geochemistry

TO: **IMETAL RESOURCES INC.**  
**580 HORNBY STREET**  
**VANCOUVER BC V6C 3B6**

Page: 2 - C  
 Total # Pages: 2 (A - D)  
 Plus Appendix Pages  
 Finalized Date: 26-MAY-2021  
 Account: RESMETI

Project: Gowganda

**CERTIFICATE OF ANALYSIS TB21117686**

Sample Description	Method Analyte Units LOD	AU/ME-T143															
		As	Co	Cr	Cu	Fe	Mn	Ni	Pb	Sb	Se	Si	Sr	Ta	Ti	Zn	
167351	36.0	460	4.2	2.1	<0.001	1.01	0.49	4.9	0.4	<0.2	<0.2	35.4	<0.01	0.17	1.4	<0.005	
167352	73.9	920	2.6	4.3	<0.001	0.12	0.22	2.9	0.2	<0.2	<0.2	87.5	<0.01	0.16	1.7	<0.005	
167353	97.7	360	8.3	1.5	<0.001	0.06	0.06	19.8	0.3	0.5	11.4	11.4	0.01	0.03	0.5	0.304	
167354	3.6	30	0.2	0.1	<0.001	0.02	<0.05	0.3	<0.2	<0.2	<0.2	7.3	<0.01	<0.01	0.3	0.005	
167355	11.8	370	3.2	2.0	<0.001	0.41	0.20	3.0	<0.2	0.4	0.4	12.9	<0.01	<0.01	1.1	0.104	
167356	7.5	180	1.2	3.0	<0.001	0.12	0.06	0.9	<0.2	<0.2	<0.2	25.4	<0.01	0.01	2.6	<0.005	
167357	43.6	510	1.3	2.8	<0.001	0.06	0.10	6.4	<0.2	0.2	0.2	11.7	<0.01	0.02	1.7	0.019	
167358	94.8	510	6.3	2.5	0.001	1.60	0.41	25.0	1.1	<0.2	<0.2	66.8	<0.01	0.58	0.6	0.020	
167359	21.8	390	1.3	8.6	<0.001	0.07	0.10	2.7	<0.2	<0.2	<0.2	13.7	<0.01	0.01	2.4	<0.005	
167360	44.6	520	2.1	6.4	<0.001	0.22	0.21	2.5	<0.2	<0.2	<0.2	7.9	<0.01	0.04	3.1	<0.005	
167362	28.1	440	3.2	1.5	<0.001	0.38	0.14	5.8	<0.2	<0.2	<0.2	27.0	<0.01	0.19	1.3	<0.005	
167001	57.3	540	0.2	3.6	<0.001	<0.01	<0.05	6.4	<0.2	0.7	0.2	15.7	0.01	<0.01	0.7	<0.005	
167002	4.2	390	0.5	1.5	<0.001	0.11	0.10	0.2	0.7	0.2	0.2	11.0	<0.01	0.03	<0.2	<0.005	
167003	18.1	170	3.5	0.9	<0.001	0.05	0.24	1.4	<0.2	<0.2	<0.2	99.6	<0.01	2.17	<0.2	<0.005	
167004	152.0	1150	3.5	5.9	<0.001	<0.01	0.17	13.7	<0.2	<0.2	<0.2	65.5	<0.01	0.01	1.3	<0.005	
167005	10.6	490	1.3	1.9	<0.001	0.49	0.74	3.3	0.2	0.2	0.2	7.7	<0.01	0.05	<0.2	0.016	
167006	1.5	400	0.3	0.3	<0.001	<0.01	0.33	0.2	<0.2	<0.2	<0.2	4.6	<0.01	<0.01	<0.2	<0.005	
167007	43.3	400	1.0	2.1	<0.001	<0.01	0.08	8.3	<0.2	0.5	0.5	8.8	<0.01	<0.01	1.8	0.159	
167008	2.5	20	0.2	0.1	<0.001	0.13	<0.05	0.2	0.2	<0.2	<0.2	6.3	<0.01	<0.01	0.2	0.005	
167009	2.4	20	<0.2	<0.1	<0.001	<0.01	<0.05	0.2	<0.2	<0.2	<0.2	4.5	<0.01	0.01	<0.2	<0.005	
167010	1.2	10	0.2	<0.1	<0.001	<0.01	<0.05	0.1	<0.2	<0.2	<0.2	3.3	<0.01	<0.01	<0.2	<0.005	
167011	1.8	10	<0.2	<0.1	<0.001	<0.01	<0.05	0.2	<0.2	<0.2	<0.2	4.0	<0.01	<0.01	<0.2	<0.005	
167012	1.6	10	<0.2	<0.1	<0.001	<0.01	<0.05	0.2	<0.2	<0.2	<0.2	5.3	<0.01	<0.01	<0.2	<0.005	
167013	41.9	430	0.7	2.0	<0.001	<0.01	0.07	6.9	<0.2	0.5	0.4	9.4	<0.01	0.01	2.1	0.134	
167014	16.2	50	0.4	0.1	<0.001	<0.01	<0.05	2.4	<0.2	0.2	0.2	8.5	<0.01	<0.01	1.0	0.038	
167015	2.1	10	0.2	<0.1	<0.001	0.05	<0.05	0.2	<0.2	<0.2	<0.2	6.3	<0.01	<0.01	<0.2	<0.005	
167016	23.8	130	0.7	0.7	<0.001	0.01	0.05	4.1	<0.2	0.3	0.3	10.8	<0.01	<0.01	1.6	0.071	

\*\*\*\*\* See Appendix Page for comments regarding this certificate \*\*\*\*\*



ALS Canada Ltd.  
 2103 Dollarton Hwy  
 North Vancouver BC V7H 0A7  
 Phone: +1 604 984 0221 Fax: +1 604 984 0218  
 www.alsglobal.com/geochemistry

To: **IMETAL RESOURCES INC.**  
**580 HORNBY STREET**  
**VANCOUVER BC V6C 3B6**

Project: Cowganda

**CERTIFICATE OF ANALYSIS TB21117686**

Page: 2 - D  
 Total # Pages: 2 (A - D)  
 Plus Appendix Pages  
 Finalized Date: 26-MAY-2021  
 Account: RESMIETI

Sample Description	Method	Units	LOD	TI	U	V	W	Y	Zn	Zr	Au
	AIUME-TL43	AIUME-TL43	AIUME-TL43	AIUME-TL43	AIUME-TL43	AIUME-TL43	AIUME-TL43	AIUME-TL43	AIUME-TL43	AU-CR421	
167351	0.05	0.27	15	0.32	4.60	30	14.4				
167352	0.10	0.31	8	0.09	5.11	20	1.7				
167353	<0.02	0.16	209	0.81	12.60	169	7.1				
167354	<0.02	<0.05	6	0.10	0.43	4	0.9			1.06	
167355	0.11	0.17	38	0.14	4.10	45	10.0				
167356	0.02	0.28	2	<0.05	3.01	14	5.3				
167357	<0.02	0.29	46	0.09	5.39	65	7.8				
167358	0.04	0.14	157	0.60	5.88	100	6.3				
167359	0.04	0.31	15	<0.05	5.71	26	7.2				
167360											
167361	0.05	0.41	13	0.06	5.35	26	3.5				
167362	0.02	0.20	12	0.19	3.73	18	7.1				
167001	0.02	<0.05	56	<0.05	6.21	87	2.7				
167002	<0.02	<0.05	8	0.13	2.11	17	<0.5				
167003	<0.02	<0.05	4	<0.05	1.67	5	0.8			2.11	
167004	0.03	0.18	25	<0.05	9.12	30	1.1				
167005	0.11	<0.05	38	1.29	2.95	29	0.5				
167006	<0.02	<0.05	1	1.30	2.65	2	<0.5				
167007	<0.02	0.26	76	1.10	8.73	33	7.4				
167008	<0.02	<0.05	7	0.14	0.30	2	0.7			4.02	
167009	<0.02	<0.05	2	<0.05	0.26	<2	0.5			2.27	
167010	<0.02	<0.05	1	<0.05	0.08	<2	<0.5			1.91	
167011	<0.02	<0.05	1	<0.05	0.20	<2	<0.5				
167012	<0.02	<0.05	2	<0.05	0.19	2	<0.5			0.90	
167013	<0.02	0.25	72	0.91	8.50	34	7.5				
167014	<0.02	0.11	21	0.40	1.94	12	2.7			1.10	
167015	<0.02	<0.05	3	0.07	0.24	2	0.5			11.30	
167016	<0.02	0.17	35	0.67	3.43	20	3.8				

\*\*\*\*\* See Appendix Page for comments regarding this certificate \*\*\*\*\*



ALS Canada Ltd.  
 2103 Dollarton Hwy  
 North Vancouver BC V7H 0A7  
 Phone: +1 604 984 0221 Fax: +1 604 984 0218  
 www.alsglobal.com/geochemistry

To: **IMETAL RESOURCES INC.**  
**580 HORNBY STREET**  
**VANCOUVER BC V6C 3B6**

Project: Gowganda

**CERTIFICATE OF ANALYSIS TB21117686**

Page: Appendix 1  
 Total # Appendix Pages: 1  
 Finalized Date: 26-MAY-2021  
 Account: RESMETT

**CERTIFICATE COMMENTS**

**LABORATORY ADDRESSES**

Applies to Method:	Processed at ALS Thunder Bay located at 645 Norah Crescent, Thunder Bay, ON, Canada	CRU-31	CRU-QC	LOG-22	PUL-31
		PUL-QC	SPL-21	WEI-21	
Applies to Method:	Processed at ALS Vancouver located at 2103 Dollarton Hwy, North Vancouver, BC, Canada.	AU-GRAZ1	AUME-TL43		

**Daily Logs for Gowganda Phase 1 Prospecting Program.**

DATE	CREW	HOURS	TASKS
20-Apr-21	Geo: Freeman Smith, Geo A.Pleason Geotechnicians: Bradly, kyle, Tristan	12	Traveled from Nipigon to Gowganda.
21-Apr-21	Geo: Freeman Smith, Geo A.Pleason Geotechnicians: Bradly, kyle, Tristan	8	Field Prep
22-Apr-21	Geo: Freeman Smith, Geo A.Pleason Geotechnicians: Bradly, kyle, Tristan	8	Prospecting, Elkhorn Lake Area
23-Apr-21	Geo: Freeman Smith, Geo A.Pleason Geotechnicians: Bradly, kyle, Tristan	8	Prospecting, Elkhorn Lake Area
24-Apr-21	Geo: Freeman Smith, Geo A.Pleason Geotechnicians: Bradly, kyle, Tristan	8	Prospecting, Elkhorn Lake Area
25-Apr-21	Geo: Freeman Smith, Geo A.Pleason Geotechnicians: Bradly, kyle, Tristan	8	Prospecting, Zone 3
26-Apr-21	Geo: Freeman Smith, Geo A.Pleason Geotechnicians: Bradly, kyle, Tristan	8	Prospecting, Zone 3
27-Apr-21	Geo: Freeman Smith, Geo A.Pleason Geotechnicians: Bradly, kyle, Tristan	8	Prospecting, Zone 3
28-Apr-21	Geo: Freeman Smith, Geo A.Pleason Geotechnicians: Bradly, kyle, Tristan	8	Prospecting, Zone 3
29-Apr-21	Geo: Freeman Smith, Geo A.Pleason Geotechnicians: Bradly, kyle, Tristan	8	Prospecting, Zone 3
30-Apr-21	Geo: Freeman Smith, Geo A.Pleason Geotechnicians: Bradly, kyle, Tristan	8	Prospecting, Zone 3
01-May-21	Geo: Freeman Smith, Geo A.Pleason Geotechnicians: Bradly, kyle, Tristan	8	Prospecting, Zone 1 2 and 3
02-May-21	Geo: Freeman Smith, Geo A.Pleason Geotechnicians: Bradly, kyle, Tristan	8	Prospecting, Zone 1 2 and 3
03-May-21	Geo: Freeman Smith, Geo A.Pleason Geotechnicians: Bradly, kyle, Tristan	8	Prospecting, Zone 1 2 and 3
04-May-21	Geo: Freeman Smith, Geo A.Pleason Geotechnicians: Bradly, kyle, Tristan	6	Prospecting, Zone 1 2 and 3
05-May-21	Geo: Freeman Smith, Geo A.Pleason Geotechnicians: Bradly, kyle, Tristan	8	Prospecting, Zone 1 2 and 3
06-May-21	Geo: Freeman Smith, Geo A.Pleason Geotechnicians: Bradly, kyle, Tristan	8	Prospecting, Zone 1 2 and 3
07-May-21	Geo: Freeman Smith, Geo A.Pleason Geotechnicians: Bradly, kyle, Tristan	8	Prospecting, Zone 1 2 and 3
08-May-21	Geo: Freeman Smith, Geo A.Pleason Geotechnicians: Bradly, kyle, Tristan	8	Prospecting, Zone 1 2 and 3
09-May-21	Geo: Freeman Smith, Geo A.Pleason Geotechnicians: Bradly, kyle, Tristan	8	Prospecting, Zone 1 2 and 3
10-May-21	Geo: Freeman Smith, Geo A.Pleason Geotechnicians: Bradly, kyle, Tristan	8	Prospecting, Zone 1 2 and 3
11-May-21	Geo: Freeman Smith, Geo A.Pleason Geotechnicians: Bradly, kyle, Tristan	8	Prospecting 12 km Vein Area
12-May-21	Geo: Freeman Smith, Geo A.Pleason Geotechnicians: Bradly, kyle, Tristan	8	Prospecting 12 km Vein Area
13-May-21	Geo: Freeman Smith, Geo A.Pleason Geotechnicians: Bradly, kyle, Tristan	8	Prospecting 12 km Vein Area
14-May-21	Geo: Freeman Smith, Geo A.Pleason Geotechnicians: Bradly, kyle, Tristan	8	Prospecting 12 km Vein Area
15-May-21	Geo: Freeman Smith, Geo A.Pleason Geotechnicians: Bradly, kyle, Tristan	8	Prospecting 12 km Vein Area
16-May-21	Geo: Freeman Smith, Geo A.Pleason Geotechnicians: Bradly, kyle, Tristan	8	Prospecting 12 km Vein Area
17-May-21	Geo: Freeman Smith, Geo A.Pleason Geotechnicians: Bradly, kyle, Tristan	8	Prospecting 12 km Vein Area
18-May-21	Geo: Freeman Smith, Geo A.Pleason Geotechnicians: Bradly, kyle, Tristan	8	Prospecting 12 km Vein Area
19-May-21	Geo: Freeman Smith, Geo A.Pleason Geotechnicians: Bradly, kyle, Tristan	8	Prospecting 12 km Vein Area
20-May-21	Geo: Freeman Smith, Geo A.Pleason Geotechnicians: Bradly, kyle, Tristan	8	Prospecting 12 km Vein Area
21-May-21	Geo: Freeman Smith, Geo A.Pleason Geotechnicians: Bradly, kyle, Tristan	8	Prospecting 12 km Vein Area
22-May-21	Geo: Freeman Smith, Geo A.Pleason Geotechnicians: Bradly, kyle, Tristan	12	Travel Gowganda to Nipigon
		<b>TOTAL</b>	<b>270</b>