



31C11NW0016 50 MADOC

010

DIAMOND DRILLING

TOWNSHIP: MADOC

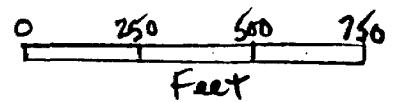
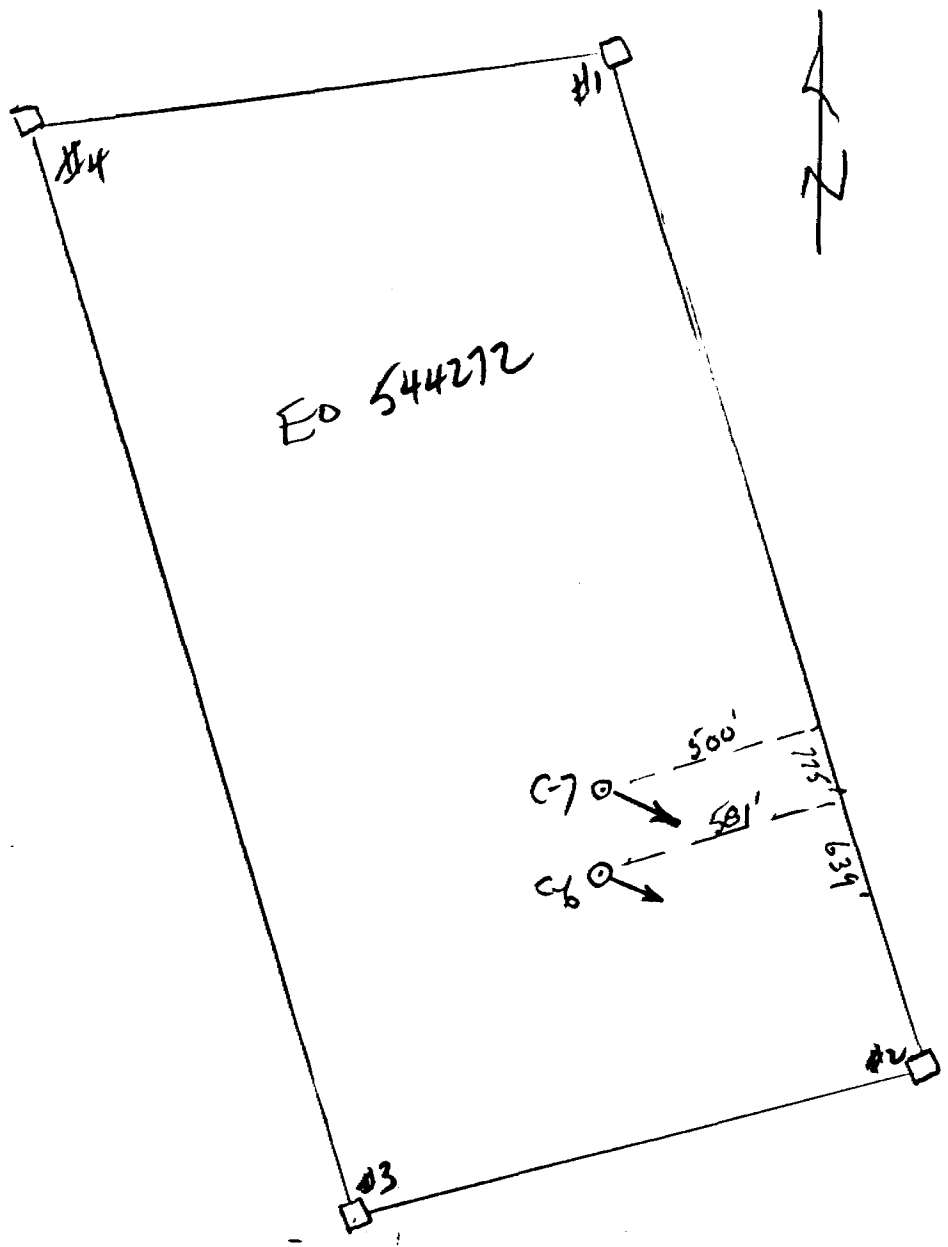
REPORT NO: 50

WORK PERFORMED FOR: Gateford Resources Inc.

RECORDED HOLDER: Same as Above [xx]
: Other []

<u>Claim No.</u>	<u>Hole No.</u>	<u>Footage</u>	<u>Date</u>	<u>Note</u>
EO 544272	88C-6	403.6'	Feb/88	(1)
	88C-7	387'	Feb/88	(1)
		<u>790.6</u>		

Notes: (1) #W8809.041, filed in Oct/88



GATEFORD RESOURCES INC
 COOPER PROPERTY
 MADOC TWP. ONTARIO

LOCATION MAP
 DDH'S BBC-6 AND
 BBC-7
 MINERAL CLAIM
 Eo 544 272

DIAMOND DRILL RECORD

NAME OF PROPERTY COOPER
 HOLE NO. 88c-6 LENGTH 403.6 FT
 LOCATION MADOC TOWNSHIP
 LATITUDE 2+78m N DEPARTURE 0 to 1m E
 ELEVATION _____ AZIMUTH 115° TRUE DIP -60°
 STARTED FEB. 13, 1988 FINISHED FEB. 15, 1988

FOOTAGE	DIP	AZIMUTH	FOOTAGE	DIP	AZIMUTH
200	-54.5				
400	-56.0				

HOLE NO. 88c-6 SHEET NO. 1
 REMARKS 80 CORE
 LOGGED BY T.J. SEEDLEY

FOOTAGE		DESCRIPTION	SAMPLE				ASSAYS				
FROM	TO		NO.	% SULPHIDES	FOOTAGE						
					FROM	TO	TOTAL	%	%	OZ/TON	OZ/TON
0	6.0	CASING									
6.0	147.6	Talc Chlorite Schist Medium to dark grey to grey green fine-grained schistose ultramafic metavolcanic; streaked and mottled with dolomite, speckled with magnetite throughout. 22.0-25.5: - Contorted, crenulated schistosity parallel to C.A.; minor scattered fine-grained pyrite. 32.4-44.0: - Fine pyrite scattered; dolomite stringers and wisps 70° C.A.; several 1 cm dolomite veins 20° C.A. 46.7, 50.0-50.3: - 5 cm white dolomite veins parallel to schistosity. 80.9-82.0: - Micaceous schist; contacts 70° C.A. 77.6: - 2 cm shear zone 30° C.A. 112.0, 113.2, 114.1, 114.6: - Fault gouges: Light green, clayey, parallel to schistosity 60° C.A. 125.6-126.6: - Grey mottled silica band 127.4-129.0: - Bronze mica bands, scattered euhedral pyrite to 5mm.									

ONTARIO GEOLOGICAL SURVEY
 ASSESSMENT FILES
 OFFICE
 MAY 6 1988
 RECEIVED

[Handwritten signature]

DIAMOND DRILL RECORD

NAME OF PROPERTY COOPER

HOLE NO. ggc-6 SHEET NO. 2

FOOTAGE		DESCRIPTION	SAMPLE			ASSAYS					
FROM	TO		NO.	SULPHIDES	FOOTAGE			%	%	OZ TON	OZ TON
					FROM	TO	TOTAL				
147.6	166.9	<p><u>Chlorite Schist</u> Dark grey to green, very fine-grained mafic meta volcanic, Moderately siliceous. Scattered white calcite veinlets 20° C.A.</p> <p>159.1-160.3: - 10cm white calcite vein; blebs quartz, pyrite.</p> <p>Contacts sharp upper 20° lower 10° C.A.</p>									
166.9	176.9	<p><u>Talc Chlorite Schist</u> As above 6.0-147.6. Schistosity 60° C.A. Occasional dolomite veins to 5mm 45° C.A.</p>									
176.9	180.1	<p><u>Chlorite Schist</u>. Medium to dark green to grey fine-grained schistose mafic meta volcanic; locally talcose.</p> <p>179.0-179.5: - Brown to black fine-grained micaceous band.</p>									
180.1	187.0	<p><u>Talc Chlorite Schist</u> As above 6.0-147.6 Schistosity 60°-70° C.A.; several 4mm pyrite blebs scattered</p>									
187.0	224.6	<p><u>Chlorite Schist</u> medium to dark green to grey-green mafic meta volcanic. Speckled dark brown mica flakes, calcite blebs parallel to schistosity 60°-70° C.A. throughout.</p> <p>188.3-188.5: - Deep red-brown iron carbonate with calcite + milky quartz</p>									

DIAMOND DRILL RECORD

NAME OF PROPERTY COOPER
 HOLE NO. 88C-6 SHEET NO. 3

FOOTAGE		DESCRIPTION	SAMPLE			ASSAYS				
FROM	TO		NO.	% SULPHIDES	FOOTAGE		%	%	OZ TON	OZ TON
					FROM	TO				
		192.7-193.7:- Red-brown amorphous silica vein; contacts sharp 80° C.A.; scattered chlorite flecks; 3mm band blue-green chlorite in centre; minor quartz-dolomite, scattered fine pyrite								
		196.3-198.0:- Light grey silica vein, contacts sharp 70° C.A.; pyrite on fractures 45° C.A.								
		196.3-196.5:- Milky quartz vein 20° C.A.								
		201.7-202.6:- Red-brown silica vein as above 192.7-193.7; sharp upper and lower contacts 70° C.A.								
		212.2-212.8:- Irregular milky quartz bleb with 20% dolomite; deep red-brown iron carbonate streaks and blebs.								
		222.5-229.6:- 3mm white dolomite and quartz veinlets parallel schistosity 60° C.A.								
229.6	242.8	Mica Schist Dark brown, schistosity 70° C.A.; pyrite scattered irregularly, dolomite streaks 10% throughout.								
		229.8-233.6:- Irregular dolomite veining, milky quartz blebs, pyrite 1% in blebs; crystals parallel schistosity 70° C.A.								

DIAMOND DRILL RECORD

NAME OF PROPERTY COOPER
 HOLE NO. 28c-6 SHEET NO. 4

FOOTAGE		DESCRIPTION	SAMPLE			ASSAYS					
FROM	TO		NO.	SULPHIDES	FOOTAGE			%	%	OZ TON	OZ TON
					FROM	TO	TOTAL				
		233.6 - 234.0: - Milky quartz vein, contacts sharp parallel schistosity 70° C.A.; minor dolomite, chlorite schist in centre, scattered pyrite.									
		236.0 - 238.1: - Milky quartz vein, cream dolomite near contacts; pyrite in fractures 236.0 - 236.3 with dolomite and chlorite schist fragments. Upper contact sharp 70° C.A., lower irregular veins in wall rock.									
		238.1 - 240.5: - Grey blue to milky quartz in blebs and lenses decreasing down core parallel to schistosity.									
242.8	254.0	<u>Chlorite Schist</u> Medium to dark grey to grey-green, micaceous; bronze mica in flecks and bands parallel to schistosity 70° C.A. Milky to grey quartz lenses and eyes lightly scattered throughout; fine pyrite lightly scattered along schistosity.									
		243.9 - 244.2: - Medium red-brown silica vein sharp contacts parallel to schistosity 70° C.A.; fine pyrite in fractures 20° C.A.									
		253.3 - 254.0: - Red brown silica vein as above 243.9 - 244.2; 2cm quartz vein 10° C.A.									

DIAMOND DRILL RECORD

NAME OF PROPERTY COOPER
 HOLE NO. 88 C-6 SHEET NO. 5

FOOTAGE		DESCRIPTION	SAMPLE			ASSAYS				
FROM	TO		NO.	% SULPHIDES	FOOTAGE		%	%	OZ TON	OZ TON
				FROM	TO	TOTAL				
254.0	260.8	<p><u>Granite</u> Medium-grained equigranular dark grey to blue quartz - feldspar - biotite intrusive; moderately developed foliation 70°-75° C.A.</p> <p>259.0-259.3: - Two 3cm mottled pink to milky quartz veins.</p>								
260.8	284.2	<p><u>Chlorite Schist</u> As above 242.8-254.0</p> <p>272.0-275.8: - Silicified schist; grey brown to milky quartz blebs 50% parallel to schistosity.</p> <p>273.1-274.6: - Milky quartz vein 20° C.A., 5% black tourmaline; minor pyrite along vein boundaries</p>								
284.2	403.6	<p><u>Gneissic Granite</u> Dark grey medium-grained gneissic granite alternating with lenses of <u>Chlorite schist</u>.</p> <p>290.5-293.9, 294.4-299.1, 301.4-316.5, 325.8-331.1, 337.9-344.0, 350.1-350.7, 352.3-353.6, 354.6-372.0, 380.1-392.4: - Chlorite Schist</p> <p>309.4-327.0 <u>Deformation Zone</u> Schistosity developed 20° C.A., core fractured and broken</p>								

LANGRIDGE TORONTO - 366-1168

DIAMOND DRILL RECORD

NAME OF PROPERTY CROPER
 HOLE NO. 88C-6 SHEET NO. 6

FOOTAGE		DESCRIPTION	SAMPLE			ASSAYS					
FROM	TO		NO.	% SULPHIDES	FOOTAGE			%	%	OZ TON	OZ TON
					FROM	TO	TOTAL				
		1-4cm milky quartz vein with open space vugs and chalcidony parallels core axis; fine pyrite scattered common									
		337.9-338.3, 390.6-391.2: - Gray-pink to red-brown silica veins 70°C.A.									
		385.0-385.5 4cm milky quartz vein 20°C.A. with 10% white dolomite.									
		387.0-388.0: - Several milky quartz veins to 4cm with dolomite to 4cm									
403.6		End of Hole.									

DIAMOND DRILL RECORD

NAME OF PROPERTY COOPER
 HOLE NO. 88c-7 LENGTH 387.0 Ft.
 LOCATION MADoc. TOWNSHIP
 LATITUDE 3+32m N DEPARTURE 0+30m W
 ELEVATION _____ AZIMUTH 115° TRUE DIP -45°
 STARTED FEB. 15, 1988 FINISHED FEB. 16, 1988

FOOTAGE	DIP	AZIMUTH	FOOTAGE	DIP	AZIMUTH
190	-46.5°				
380	-42°				

HOLE NO. 88c-7 SHEET NO. 1

REMARKS DR CORE

LOGGED BY T. J. BEESLEY

FOOTAGE		DESCRIPTION	SAMPLE				ASSAYS				
FROM	TO		NO.	% SULPHIDES	FOOTAGE		%	%	OZ/TON	OZ/TON	
					FROM	TO	TOTAL				
0	14.0	CASING									
14.0	42.1	<u>Talc Chlorite Schist</u> Medium to dark grey to grey green fine-grained Schistose ultramafic metavolcanic; streaked and mottled with dolomite, speckled with magnetite throughout. 14.0-16.7:- poorly developed schistosity 80° core axis (C.A.) 14.7-15.3:- hematite streaks parallel to Schistosity 16.7-22.3:- Heavy hematite staining parallel to Schistosity 80° C.A. 24.5-42.1:- 1cm dolomite veins 50°-80° C.A.; Schistosity 60° C.A. 27.0-27.8:- Schistosity wavy. 45° C.A.									
42.1	43.0	<u>Chlorite Schist</u> Dark green, fine-grained schistose mafic metavolcanic. Schistosity 60° C.A. Upper and lower contacts sharp parallel to schistosity.									

ONTARIO GEOLOGICAL SURVEY
 ASSESSMENT FILES
 OFFICE
 MAY 6 1988
 RECEIVED

T. J. Beesley

DIAMOND DRILL RECORD

NAME OF PROPERTY COOPER
 HOLE NO. 88C-7 SHEET NO. 2

FOOTAGE		DESCRIPTION	SAMPLE			ASSAYS					
FROM	TO		NO.	% SULPHIDES	FOOTAGE			%	%	OZ. TON	OZ. TON
					FROM	TO	TOTAL				
43.0	57.0	<p><u>Talc Chlorite Schist</u> As above 14.0-42.1</p> <p>45.5-47.0: Irregular fine dolomite stringers.</p> <p>47.0-48.2: - Dolomite mottling 70° C.A.</p> <p>48.2 - 54.0: - Schistosity 50° C.A.</p> <p>51.2 :- 7 cm dolomite vein; sharp contacts 70° C.A.</p>									
57.0	96.7	<p><u>Chlorite Schist</u> As above 42.1-43.0.</p> <p>58.7: - 1.5 cm dolomite vein 45° C.A.</p> <p>62.0: - 1.5 cm dolomite vein 60° C.A.</p> <p>68.1-69.3, 71.0-73.3, 80.7-82.8: - <u>Talcosse</u> sections.</p> <p>69.3: - 3 cm dolomite vein 45° C.A.; several schist fragments included; two 0.5 cm chalcopyrite blebs.</p> <p>70.0: - 3 cm dolomite vein; schist inclusion.</p> <p>75.3: - 3 cm dolomite vein, talc borders.</p> <p>75.7: - light grey dolomite wedge</p> <p>77.6: - 3.5 cm dolomite vein; schist inclusions</p> <p>82.1: - 1.5 cm dolomite vein 70° C.A.</p>									
96.7	139.4	<p><u>Talc Chlorite Schist</u> As above 14.0-42.1</p> <p>Schistosity 70°-80° C.A.</p> <p>98.0: - Dolomite vein 5 cm. 45° C.A.</p> <p>100.5-101.0, 117.6-117.8, 128.7-129.1: - Dark green chlorite-rich sections</p>									

DIAMOND DRILL RECORD

NAME OF PROPERTY COOPER
 HOLE NO. 88c-7 SHEET NO. 3

FOOTAGE		DESCRIPTION	SAMPLE			ASSAYS					
FROM	TO		NO.	% SULPHIDES	FOOTAGE			%	%	OZ. TON	OZ. TON
					FROM	TO	TOTAL				
139.4	159.9	106.2-107.0, 107.9-109.8:- Dolomite - mottled 117.0-117.5, 123.0:- 4cm dolomite veins, minor talc. <u>Chlorite Schist</u> As above 42.1-43.0 139.4-142.3:- Narrow dolomite veinlets parallel to schistosity. 143.6-143.8:- Rounded blue grey quartz blebs with dolomite blebs. 147.2-150.3:- 146.0-152.0:- Scattered pink to white quartz eyes (< 0.5 cm) 155.5-159.9:- Deformed, crenulated schistosity 45°C.A. 158.6:- 1cm dolomite vein 45°C.A.									
159.9	219.2	<u>Talc Chlorite Schist</u> As above 14.0-42.1 172.0-184.1:- Pyrite cubes/blebs to 2mm scattered through folie. 181.5-182.0:- 5% pyrite cubes/blebs to 1cm. 184.1-185.4:- Calcite streaks 70°C.A. 192.0-194.1:- 10-15% pink calcite, 50% milky quartz in blebs to 4cm.; sub-parallel to schistosity 60°C.A. 197.0-198.0:- 40% pink calcite in milky quartz vein. 198.0-199.0:- 20% pink calcite in irregular blebs; limonite streaks parallel schistosity 40°C.A. 199.0-202.6:- <u>FAULT ZONE</u> Dark red hematitic, calcite-rich slickensides 20, 40°C.A.									

DIAMOND DRILL RECORD

NAME OF PROPERTY COOPER
 HOLE NO. 88c-7 SHEET NO. 4

FOOTAGE		DESCRIPTION	SAMPLE			ASSAYS					
FROM	TO		NO.	% SULPHIDES	FOOTAGE			%	%	OZ TON	OZ TON
					FROM	TO	TOTAL				
		200.0 - 201.2 :- clay gouge; chlorite, calcite streaks, fragments. Upper and lower contacts fault zone 70° and 80° C.A. 216.3 - 217.5; Reddish-grey silicified; sharp contacts 70° C.A.									
219.2	380.1	Chlorite Schist As above 42.1 - 43.0 Schistosity 70° C.A. 219.2 - 245.0 :- 5% calcite with milky quartz ^{as} blebs and veinlets at variable angles C.A. 226.4 - 226.7 :- Grey mottled pink silica band parallel to schistosity 230.5 - 232.7 :- Pink to grey-green silica band; sharp contacts parallel to schistosity. 232.7 - 237.0 :- Speckled bronze mica 241.0 - 265.0 :- 1-2 mm pyrite cubes in bands parallel to schistosity and in fine fractures. 285.6 - 286.0 :- Medium to dark grey silica vein; sharp contacts 70° C.A. 286.7 :- 10cm dark grey silica vein with calcite, quartz; 70° C.A.									

DIAMOND DRILL RECORD

NAME OF PROPERTY COOPER
 HOLE NO. BB C-7 SHEET NO. 5

FOOTAGE		DESCRIPTION	SAMPLE			ASSAYS					
FROM	TO		NO.	% SULPHIDES	FOOTAGE			%	%	OZ TON	OZ TON
				FROM	TO	TOTAL					
		288.0-291.8:- Grey silica vein, contacts 70°C.A.; contains 5cm mica schist band.									
		291.6-295.9:- Host rock chlorite schist dark blue-grey silicified.									
		295.9-298.0:- Blue grey mottled silica vein; sharp contacts 70°C.A.; minor very fine pyrite in fractures parallel to schistosity 70°C.A.									
		336.0-347.0:- Crenulated schistosity 30°C.A.; small shears at low angle to C.A.									
		348.0, 357.7, 358.0, 359.0-359.3:- 3cm pink silica veins, sharp contacts 70°C.A.									
		367.6-371.1:- Narrow white dolomite veins grey mottled with quartz; irregular contacts sub-parallel to schistosity.									
		380.1-387.0 Granite Dark grey medium to fine grained, foliated to gneissic quartz - Feldspar - biotite intrusive. Several narrow calcite veins 70° to 30° C.A.									
		383.1:- 2cm carb. - quartz vein scattered pyrite									
		380.6-381.1, 381.7-384.7:- Inclusions chlorite schist									
		387.0 End of Hole									

LANGRIDGE TORONTO - 366-1168



Ontario MADOC TWA (G.1269) Mining

Name and Postal Address of Recorded Holder: GATEFORD RESOURCES INC. SUITE 5840, 1 FIRST CANADIAN PLACE TORONTO, ONTARIO M5X 1E1

Summary of Work Performance and Distribution of Credits

Table with columns: Total Work Days Cr. claimed (567.0), Mining Claim Prefix (E0), Mining Claim Number, Work Days Cr. (24, 23, 200, 160, 160), and checkboxes for work types (Manual Work, Shaft Sinking, etc.).

All the work was performed on Mining Claim(s): E0 544272

Required Information eg: type of equipment, Names, Addresses, etc. (See Table Below)

EASTERN ONTARIO DIAMOND DRILLING LTD P.O. BOX 33 SHARBOT LAKE, ONTARIO WORK FEB. 13-16, 1988 BQ CORE

HOLE 88 C-6 403.6 HOLE 88 C-7 387.0 TOTAL 790.6

RECORDED MAY - 4 1988 Receipt # [Signature]

SOUTHERN ONTARIO MINING DIV RECEIVED MAY - 3 1988 PM 7 3, 9, 10, 11, 12, 1, 2, 3, 4, 5, 6

ONTARIO GEOLOGICAL SURVEY ASSESSMENT FILES OFFICE MAY 6 1988 RECEIVED

DAYS RECORDED ON THIS REPORT 567 BALANCE 223.6

Date of Report: MAY 3/88 Recorded Holder or Agent (Signature): [Signature]

Certification Verifying Report of Work

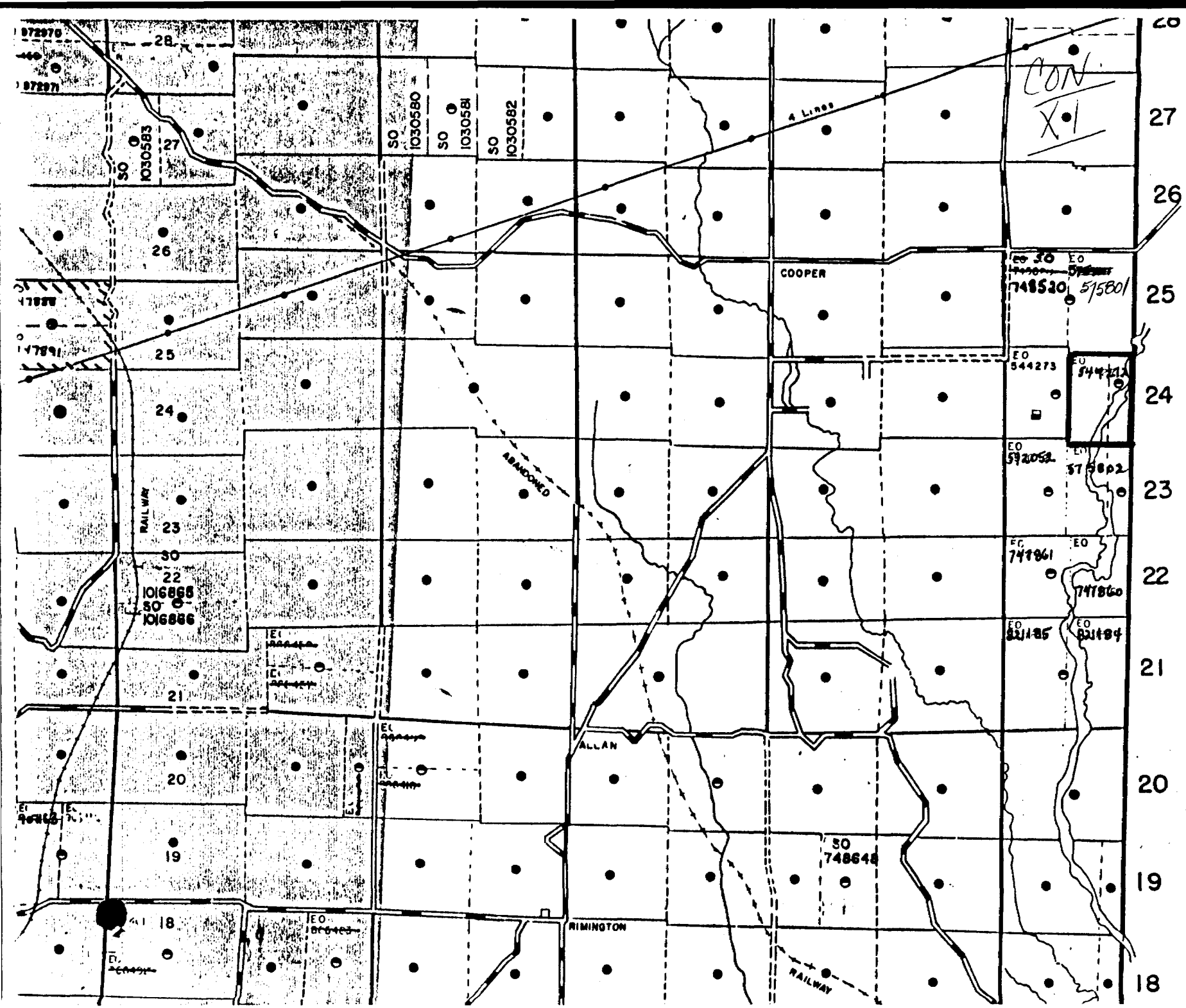
I hereby certify that I have a personal and intimate knowledge of the facts set forth in the Report of Work annexed hereto, having performed the work or witnessed same during and/or after its completion and the annexed report is true.

Name and Postal Address of Person Certifying: T.J. BEESLEY 24 LOTHIAN AVE. TORONTO, ONTARIO M8Z 4J8

Date Certified: May 3/88 Certified by (Signature): [Signature]

Table of Information/Attachments Required by the Mining Recorder

Table with 4 columns: Type of Work, Specific information per type, Other information (Common to 2 or more types), Attachments. Rows include Manual Work, Shaft Sinking, Compressed air, Power Stripping, Diamond or other core drilling, and Land Survey.



MADOC TU
(G1269)

CON
X1

EO 748530
515801

EO 544273

EO 592052

EO 744861

EO 821185

EO 821185

EO 821185

EO 821185

EO 821185

EO 821185

EO 821185

EO 821185

EO 821185

EO 821185

EO 821185

EO 821185

EO 821185

EO 821185

EO 821185

EO 821185

EO 821185

EO 821185

EO 821185

EO 821185

EO 821185

EO 821185

EO 821185

EO 821185

EO 821185

EO 821185

EO 821185

EO 821185

EO 821185

EO 821185

EO 821185

EO 821185

EO 821185

EO 821185

EO 821185

EO 821185

EO 821185

EO 821185

EO 821185

EO 821185

EO 821185

EO 821185

EO 821185

EO 821185

EO 821185

EO 821185

EO 821185

EO 821185

EO 821185

EO 821185

EO 821185

EO 821185

EO 821185

EO 821185

EO 821185

EO 821185

EO 821185

EO 821185

EO 821185

EO 821185

EO 821185

EO 821185

EO 821185

EO 821185

EO 821185

EO 821185

EO 821185

EO 821185

EO 821185

EO 821185

EO 821185

EO 821185

EO 821185

EO 821185

EO 821185

EO 821185

EO 821185

EO 821185

EO 821185

EO 821185

EO 821185

EO 821185

EO 821185

EO 821185

EO 821185

EO 821185

EO 821185

EO 821185

EO 821185

EO 821185

EO 821185

EO 821185

EO 821185

EO 821185

EO 821185

EO 821185

EO 821185

EO 821185

EO 821185

EO 821185

EO 821185

EO 821185

EO 821185

EO 821185

EO 821185

EO 821185

EO 821185

EO 821185

EO 821185

EO 821185

EO 821185

EO 821185

EO 821185

EO 821185

EO 821185

EO 821185

EO 821185

EO 821185