

DIAMOND D



31C11SW0012 14 ELZEVR

010

TOWNSHIP: Elzevir

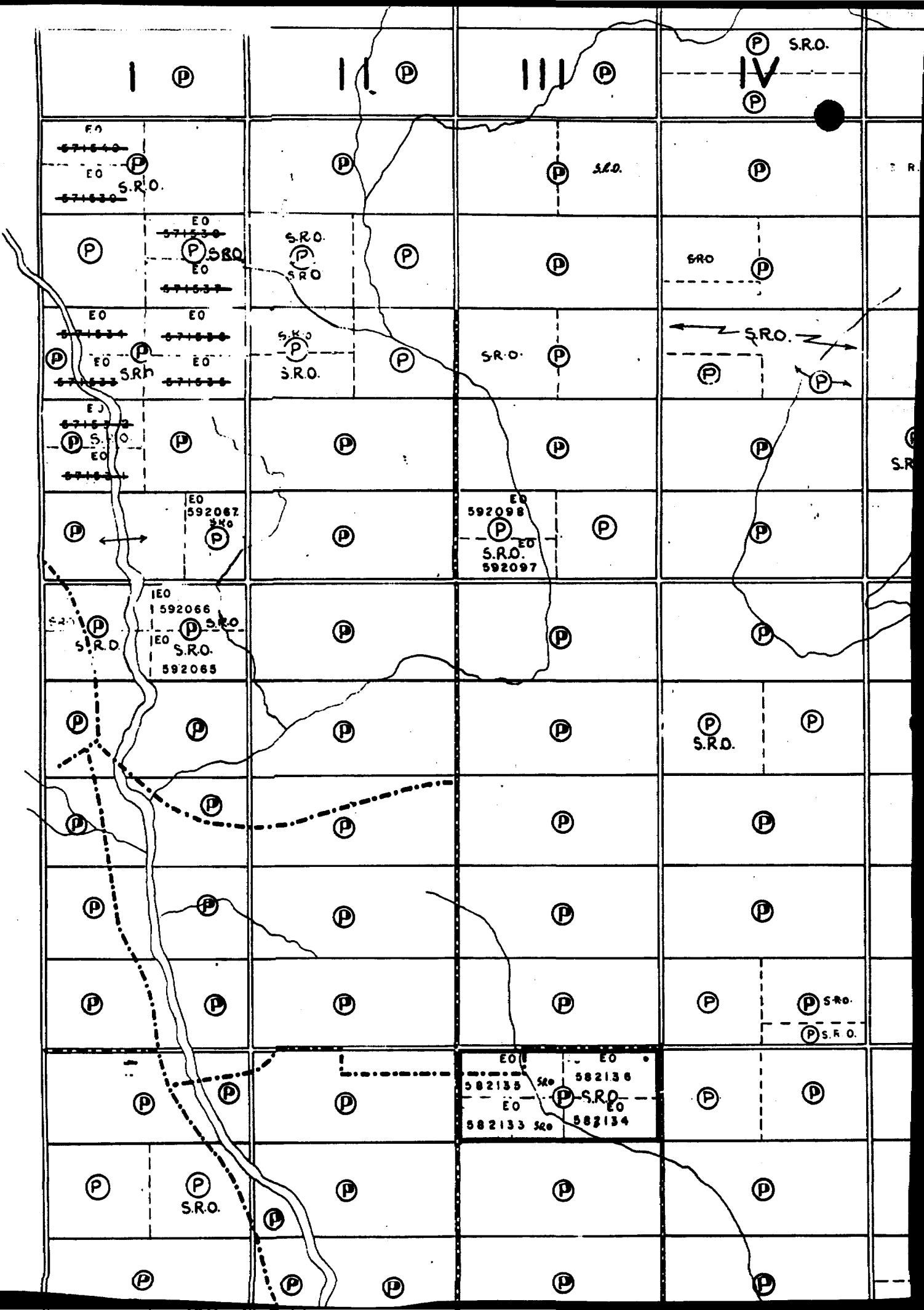
REPORT No.: 14

WORK PERFORMED BY: James Leon Byer

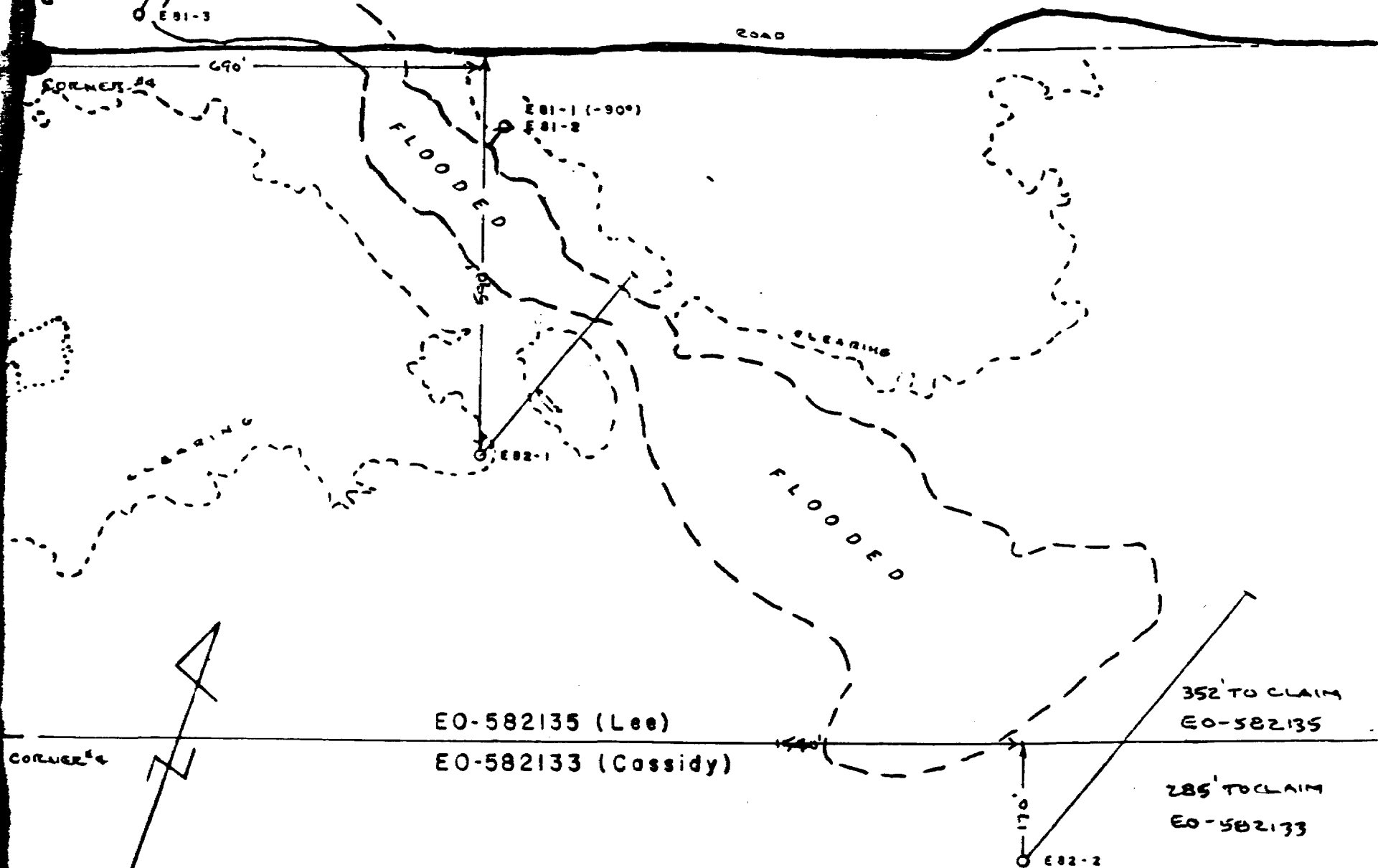
<u>CLAIM No.</u>	<u>HOLE No.</u>	<u>FOOTAGE</u>	<u>DATE</u>	<u>NOTE</u>
EO 582135	E82-1	450.0	May/82	(1)
EO 582133	E82-2	637.0	June/82	(1)
		<u>1087.0</u>		

NOTES: (1) #30-82

NADOC



PROGRESS SKETCH



EO-582135 (Lee)

EO-582133 (Cossidy)

352' TO CLAIM  
EO-582135

285' TO CLAIM  
EO-582133

STEEP ROCK IRON MINES LTD.

**ELZEVIR TALC PROJECT**

SCALE 1" = 200'

# DIAMOND DRILL LOG

Steep Rock Iron Mines Ltd.

Elzevir Twp., Ontario

**Hole No.** - E82-1                      **Elevation** -  
**Started** - May 17, 1982            **Dip - Collar** - -40°  
**Completed** - May 27, 1982  
**Bearing** - N 20° E  
**Length** - 450'  
**Purpose** - To test talcose zone

**Claim** - NW¼ Lot 10,  
 Conc. III  
 - EO-582135  
**Location** - (Byer Option)  
**Latitude** - 590' S  
**Departure** - 690' E of NW corn  
**Logged by** - D. Marek & C. Fox  
**Drill Co.** - Eastern Ontario  
 D.D. Company

CORE - AX - 1 3/4" D.

DEPTH FEET	DESCRIPTION	SAMPLE No.	ASSAYS	FOOTAGE	WIDTH
0-6.3	CASING (Overburden)				
6.3-48.0	MAFIC VOLCANICS - massive, fine grained, low schisting with quartz stringers @ 65° CA, dark green				
48.0-143.3	TUFFACEOUS MAFIC VOLCANICS - medium schisting, dark green, fine grained with micaceous banding and disseminated pyrite - quartz and carbonate stringers @ 65° CA to almost parallel to core 50-50½ Quartz @ 75° CA				
143.3-145.6	SILICEOUS VOLCANICS - low schist. light grey, fine grained with disseminated pyrite				
145.6-217.4	TUFFACEOUS MAFIC VOLCANICS - medium schisting, dark green with micaceous banding @ 80° CA quartz and carbonate stringers few fine sulphide stringers; all @ 80° CA 205.0-205.9 Quartz Vein @ 80CA				
217.4-220.6	CHLORITIZED MAFIC VOLCANICS - medium schisting, soft, light green with few dark mafic bands				

DEPTH FEET	DESCRIPTION	SAMPLE No.	ASSAYS	FOOTAGE	WIDTH
220.6-231.3	MAFIC VOLCANICS - dioritic, dark grey to green 225' 3" Chlorite seam	4514		216.3-231.3	15.0
231.5-235.0	TRANSITION ZONE, MAFIC TO SERP- ENTINIZED VOLCANICS - dark to light green and softer, deformed carbonate bands 233-234 FAULT or SHEAR ZONE	4515		231.3-235.0	3.7
235.0-293.5	SERPENTINIZED MAFIC VOLCANICS - light green to grey, soft (scratches easily with knife, not fingernail) irregular carbonate bands with few talc veinlets and some quartz stringers	4516		235.0-255.0	20.0
		4517		255.0-275.0	20.0
		4518		275.0-293.5	18.5
293.5-303.9	SERPENTINIZED MAFIC VOLCANICS - dark green, hard, carbonate stringers parallel to schist. @ 80° CA	4519		293.5-303.9	10.4
303.9-353.4	SERPENTINIZED MAFIC VOLCANICS - light grey, softer with some small talc seam with numerous carbonate bands (dolomite?) and some quartz also, general schisting @ 85° CA 348-353½ Medium grained Mag.	4520		303.9-320.0	16.1
		4521		320.0-335.0	15.0
		4522		335.0-353.4	18.4
353.4-370.7	TRANSITION ZONE, SERPENTINIZED TO MAFIC VOLCANICS 353.4-363.2 SHEAR ZONE, dark green, chloritic (360.9-361.6 brown cherty with fine pyrite and micaceous) 363.2-368.8 SILICEOUS VOLCS. with medium schisting @ 75° CA fine, disseminated pyrite 368.0-369.6 SERPENTINIZED SEAM @ 70° CA 369.6-370.7 QUARTZ VEIN with prominent tourmaline crystals (up to 1" long)				
		4523		353.4-363.2	9.8
		4524		363.2-370.7	7.5

DEPTH FOOT	DESCRIPTION	SAMPLE No.	ASSAYS	FOOTAGE	WIDTH
370.7-450.0	TUFFACEOUS MAFIC VOLCANICS - hard, silicified, dark grey -green, carbonate stringers Quartz Vein @ 411.8' & 413' Low schisting @ 75° CA Partly massive	4525		370.7-385.7	15.0
450.0	End of Hole E82-1		<i>G. Fox, P. Eng.</i>		

MINING RECORDS OFFICE TORONTO

**R E C E I V E D**

AUG - 4 1982

AM 7 8 9 10 11 12 1 2 3 4 5 6 PM

▲

# DIAMOND DRILL LOG

Steep Rock Iron Mines Ltd.

Elzevir Twp., Ontario

Hole No. - E82-2  
 Started - June 1, 1982  
 Completed - June 17, 1982  
 Bearing - N 20° E  
 Length - 637'  
 Purpose - To test talcose zone

Elevation -  
 Dip - Collar - -40°

Claim - SW¼ Lot 10,  
 Conc. III  
 - EO-582133  
 Location - (Byer Option)  
 Latitude - 170' S  
 Departure - 1540' E of NW corn.  
 Logged by - D. Marek & C. Fox  
 Drill Co. - Eastern Ontario  
 D.D. Company

CORE - AX - 1 3/16" Ø.

DEPTH FEET	DESCRIPTION	SAMPLE No.	ASSAYS	FOOTAGE	WIDTH
0-29.0	CASING (Overburden)				
29.0-32.4	MAFIC VOLCANICS - cherty, dark red				
32.4-59.7	MAFIC VOLCANICS - massive grading to tuffaceous, dark green, fine grained, low schisting @ 75° CA	4526		44.7-59.7	15.0
	LOST CORE -36.8-38.9, 40.4-43.5 & 50.6-53.0				
59.7-98.3	TALCOSE SERPENTINIZED MAFIC VOLCANICS - quartz and carbonate stringers parallel to schisting @ 75° CA - light grey-green	4527		59.7-62.2	2.5
	Talcose @ 60.9' & 62.1'	4528		62.2-82.3	20.1
	Open Seam @ 81.3-82.1	4529		82.3-98.3	16.0
98.3-107.4	SERPENTINIZED MAFIC VOLCANICS - light grey-green, mottled with irregular carbonate stringers 103.1' Carbonate stringer with some talc @ 40° CA	4530		98.3-107.4	9.1
107.4-157.4	SERPENTINIZED MAFIC VOLCANICS - dark green with irregular carbonate stringers	4531		107.4-132.4	25.0
	149' Some carbonate with assoc. talc @ 25° CA	4532		132.4-157.4	25.0
	150.1' 3" Carbonate @ 65° CA				

DEPTH FEET	DESCRIPTION	SAMPLE No.	ASSAYS	FOOTAGE	WIDTH
157.4-183.7	SERPENTINIZED MAFIC VOLCANICS - Siliceous, dark green, fine grained with schisting @ 80° CA LOST CORE 158.8-159.8 & 167.3 -168.4	4533		157.4-183.7	26.3
183.7-195.8	SERPENTINIZED MAFIC VOLCANICS - dark green with irregular carbonate stringers, associated talcose schisting @ 80° CA 195.1-195.5 Talc-carbonate band @ 35° CA	4534		183.7-195.8	12.1
195.8-236.8	SERPENTINIZED MAFIC VOLCANICS - same as above with increase in carbonate stringers 216.2-218.0 Talc-carbonate @ 65° CA 235.1-336.3 Talc-carbonate band @ 70° CA	4535 4536 4537 4538		195.8-215.0 215.0-218.0 218.0-234.0 234.0-236.8	19.2 3.0 16.0 2.8
236.8-285.2	SERPENTINIZED MAFIC VOLCANICS - dark green, fine grain with irregular carbonate stringers 256.4-257.1 Carbonate @ 35° CA 266.3' 2" Carbonate-talc @ 30° CA -progressively increasing associated talc	4539 4540		236.8-266.3 266.3-285.2	29.5 18.9
285.2-288.8	TALCOSE SERPENTINIZED MAFIC VOLCS. light grey, soft	4541		285.2-288.8	3.6
288.8-308.5	MAFIC VOLCANICS - hard, fine grain 294.7-300.4 Cherty, dark red 300.4-303.0 Micaceous 303.0-308.5 Siliceous & micaceous @ 65° CA	No Sample		→	19.7
308.5-325.3	SERPENTINIZED MAFIC VOLCANICS - dark green with carbonate stringers parallel to schist- ing @ 75° CA	4542		308.5-310.5	2.0



DEPTH FEET	DESCRIPTION	SAMPLE No.	ASSAYS	FOOTAGE	WIDTH
308.5-325.3	Cont'd. ---				
	309.0-310.5 Talcoese, soft	4543		310.5-322.0	11.5
	322.0-324.0 Talcoese with some coarse grain magnetite	4544		322.0-325.3	3.3
325.3-355.7	SERPENTINIZED MAFIC VOLCANICS - (or chloritic) dark green, fine grained with schisting @ 85° CA, tuffaceous  LOST CORE 336.2-336.9	4545		325.3-355.7	30.4
355.7-384.9	SERPENTINIZED MAFIC VOLCANICS - light green with irregular carbonate veining and talcoese schisting @ 70° CA	4546		355.7-384.9	29.2
384.9-389.0	TALCOSE MAFIC VOLCANICS - light green, soft with fine grained magnetite	4547		384.9-389.0	4.1
389.0-445.0	SERPENTINIZED MAFIC VOLCANICS - dark green with numerous irregular carbonate stringers cross-cutting the schisting @ 70° CA (general)	4548		389.0-396.7	7.7
	396.7-397.1 Carbonate-talc	4549		396.7-399.3	2.6
	399.1-399.3 Talc @ 65° CA				
	400.4-400.7 Carbonate-talc				
	404.0-404.4 Talc @ 65° CA	4550		399.3-404.4	5.1
	429.4-429.6 Carbonate @ 45° CA	4481		404.4-435.5	31.1
	435.5-435.7 Carbonate-talc				
	443.6-444.3 Carbonate-talc	4482		435.5-445.0	9.5
445.0-459.7	TALCOSE SERPENTINIZED MAFIC VOLCANICS light grey, soft with carbonate parallel to schisting	4483		445.0-459.7	14.7
459.7-517.3	TALCOSE SERPENTINIZED MAFIC VOLCANICS soft, mottled, light grey with carbonate stringers medium schisting near end @ 65° CA - disseminated fine grained magnetite				
	459.7-461.5 Micaceous & chloritic	4484		459.7-489.7	30.0
		4485		489.7-517.3	27.6

DEPTH FEET	DESCRIPTION	SAMPLE No.	ASSAYS	FOOTAGE	WIDTH
517.3-519.5	FAULT ZONE - Talcose, very soft light grey with schisting @ 30° CA	4486		517.3-519.5	2.2
519.5-525.5	TALCOSE SERPENTINIZED MAFIC VOLCANICS - Light grey, soft, with schist @ 70° CA  519.5-522.3 Chloritic, dark green, micaceous  LOST CORE 521.1-521.9	4487		519.5-525.5	6.0
525.5-637.0	TUFFACEOUS MAFIC VOLCANICS - Dark grey to black, fine grain, irregular quartz stringers and schisting @ 75° CA (LOST CORE 550.8-551.7)  563.5-563.8 Quartz	4488		525.5-540.5	15.0
637.0	End of Hole E82-2		<i>E. J. P. Eng</i>		

MINING RECORDS OFFICE TORONTO  
**R E C E I V E D**  
 AUG - 4 1982  
 AM 7 8 9 10 11 12 1 2 3 4 5 6 PM