



31C12NE0043 2.9048 MADOC

010

ASSESSMENT REPORT
ON A GEOCHEMICAL SURVEY
OF CLAIMS EO 572483, EO 592199, EO 740470 AND EO 740472
ON THE BANNOCKBURN PROPERTY
OF MONO GOLD MINES INC.

Submitted by:

M. Kenneth Kryklywy P. Eng.
Beavon Consulting Limited
Richmond, British Columbia

December 31, 1985



31C12NE0043 2.9048 MADOC

TABLE OF

010C

	PAGE
INTRODUCTION	1.
LOCATION AND ACCESS	1.
PHYSIOGRAPHY AND VEGETATION	1.
PREVIOUS WORK	1. & 4.
LINECUTTING	4.
GEOCHEMISTRY	4.
CONCLUSIONS AND RECOMMENDATIONS	5.
CERTIFICATE OF QUALIFICATION	6.

APPENDICES

1 PROJECT PERSONNEL	7.
11 ANALYTICAL RESULTS	8.

LIST OF ILLUSTRATIONS

Fig. 1	General Location Map	2.
Fig. 2	Claim Location Map	3.
Fig. 3	Geochemical Survey - Sample Locations	
Fig. 4	Geochemical Survey - Analytical Results	

INTRODUCTION

Claims E0572483, E0592199, E0740470 and E0740472 were acquired by Mono Gold Mines of Vancouver, British Columbia as part of a gold exploration program near the village of Bannockburn in Madoc Township, Hastings County, Ontario. Linecutting and a geochemical survey were carried out by Beavon Consulting Limited of Richmond, British Columbia from October 28th to December 1, 1985. This report details the work performed during this period.

LOCATION AND ACCESS

The claims occupy the eastern half of Lot 27, Concession V; the southern quarter (east of the railway right of way) of the western half of Lot 28, Concession VI; and a narrow strip of the western quarter of the northern half of Lot 27, Concession VI in Madoc Township, Hastings County, Ontario (NTS Ref. 13 C/12). The claims occur along the southern outskirts of the village of Bannockburn.

Access to the property is via Highway 62, north 18 kilometers from Madoc to Bannockburn. Highway 62 passes through the centre of the claims. The eastern portion of the claims can also be accessed by automobile along an old railway right of way which passes through Bannockburn.

PHYSIOGRAPHY AND VEGETATION

The topography of the claims is relatively flat with moderate outcrop exposure and numerous small swamps.

The overburden is fairly thin with well developed podzol soils in the better drained areas and organic rich soils in the poorly drained areas.

The vegetation is mixed consisting mostly of poplar, maple, spruce, cedar and fir. Some of the claims have been selectively lumbered.

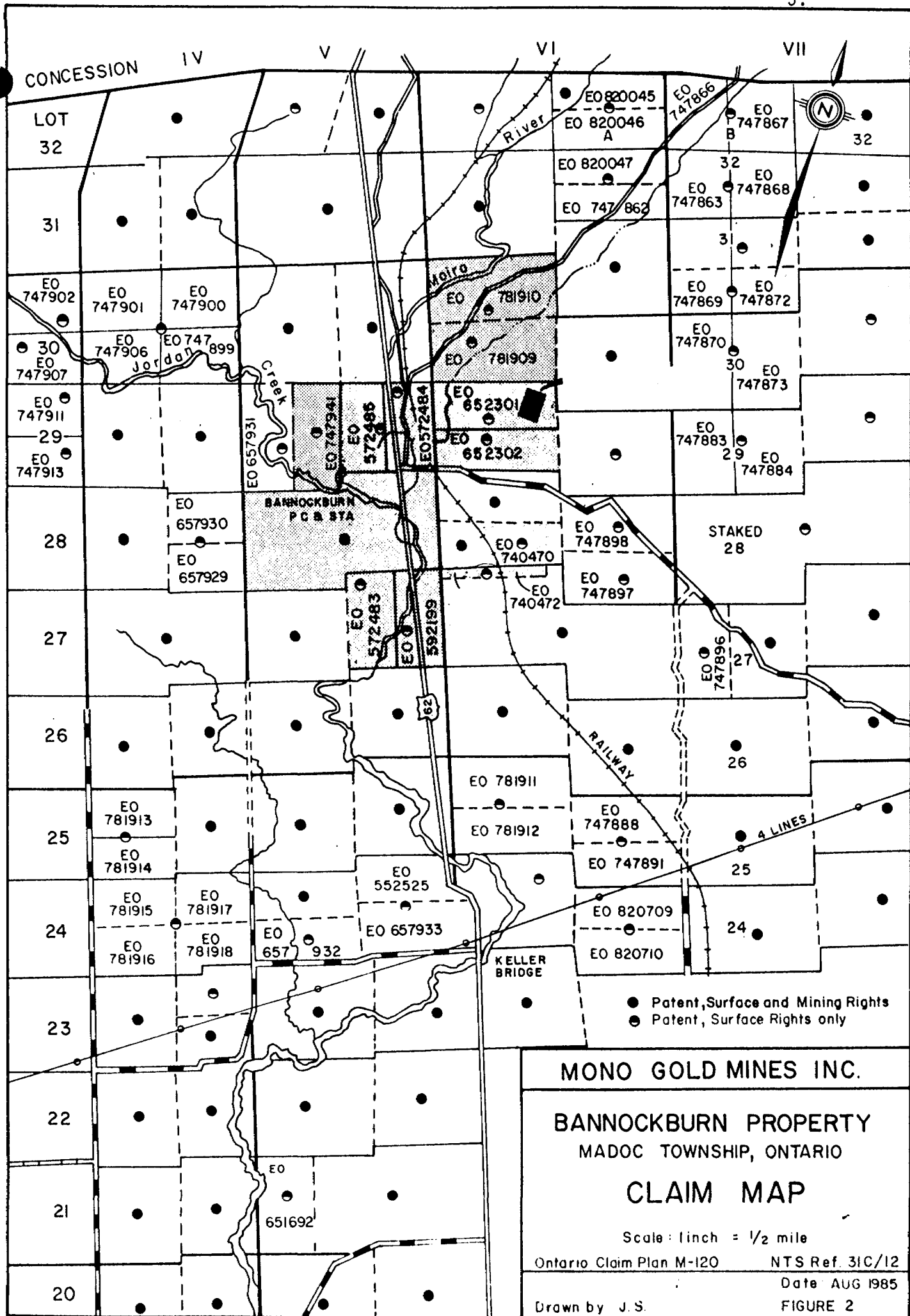
PREVIOUS WORK

Geological mapping, max.min. electromagnetic and magnetic surveys were carried out over claims E0522483 and E0592199 west of the Moira River by



MONO GOLD MINES INC.
BANNOCKBURN PROPERTY
MADOC TOWNSHIP
EASTERN ONTARIO MINING DIVISION
GENERAL LOCATION MAP

FIGURE 1



Mono Gold Mines in 1984. Two diamond drill holes have also been drilled by Mono Gold Mines in 1981 and 1985 on claim E0 572483 as part of a larger gold exploration program around the old Bannockburn Mine. The old mine is located in lot 28 of Concession V. Gold assays in these two holes were negligible.

LINECUTTING

In total, 37,650 feet of line were cut and chained on the claims. Three linecutters were employed for a period of 6 days between the dates of October 28 and November 28, 1985 to complete this work. Three grids were cut with separate baselines to cover each part of the claims. West of the Moira River, the baseline is oriented at 345° (astronomic). East of the Moira River, the baseline was cut parallel to Highway 62 at 334° (astronomic). On claim E0 740470, the baseline was established at 070° astronomic. Lines were cut at 200 foot spacings and stations were chained at 100 foot intervals on all the grids.

GEOCHEMISTRY

In total, 401 B-horizon soil samples were collected on November 1 and from November 27 to December 1, 1985. Samples were taken at 50 foot intervals on a line spacing of 200 feet at an average depth of 16" using a soil auger. (Fig. 3)

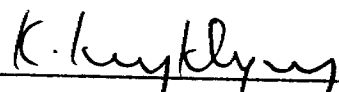
All samples were submitted for geochemical analysis for bismuth to Chemex Labs in Mississauga, Ontario. Analysis procedures included drying, sieving to -80 mesh and then digesting a 2 gram sample in HCl and $KClO_3$. A TOPO-MIBK extraction was used and then the sample was analyzed using Atomic Absorption with a background correction. (Fig. 4)

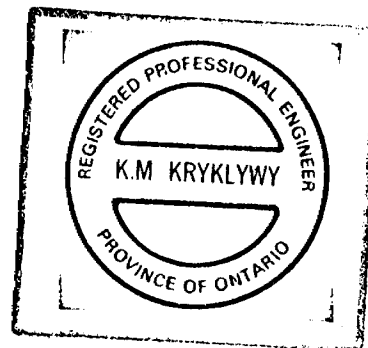
The results of the survey were generally low with most of the results varying from 0.1 to 0.8 ppm bismuth. Two spot highs of 1.0 ppm bismuth were found through the soil geochemistry survey. (Fig. 4)

CONCLUSIONS AND RECOMMENDATIONS

The soil geochemistry survey of the claims yielded low results. No further work is recommended at the present time.

Submitted by


M. Kenneth Kryklywy, P. Eng.



CERTIFICATE OF QUALIFICATION

I, Kenneth Kryklywy, hereby certify that:

I am a Geological Engineer working for Beavon Consulting Limited of Richmond, British Columbia.

1. I have a B.A.Sc. (1979) from the University of Toronto.
2. I am a Registered Professional Engineer (1983) with the Association of Professional Engineers of Ontario.
3. The work undertaken for this report was under my supervision.

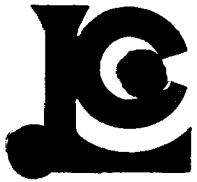

M. Kenneth Kryklywy, P. Eng.



APPENDIX 1 - PROJECT PERSONNEL

Roy Beavon - Project Manager
Kenneth Kryklywy - Geological Engineer
Katherine Kryklywy - Geologist

APPENDIX 11 - ANALYTICAL RESULTS



Chemex Labs Ltd.

Analytical Chemists • Geochemists • Registered Assayers

212 Brooksbank Ave.
North Vancouver, B.C.
Canada V7J 2C1

Telephone: (604) 984-0221
Telex: 043-52597

CERTIFICATE OF ANALYSIS

TO : MOND GOLD MINES INC.
C/O BEAVON CONSULTING LTD.
8720 MILLMORE RD.
RICHMOND, B.C.
V7C 1S9

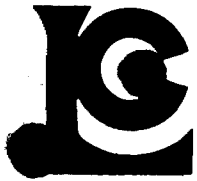
** CERT. # : A8518074-001-A
INVOICE # : 18518074
DATE : 8-NOV-85
P.O. # :
MADOC

✓ VCC: BEAVON CONSULTING, MADOC, ONT.

Sample description	Prep code	Bi ppm						
882	201	2.9	--	--	--	--	--	--
883	201	5.6	--	--	--	--	--	--
884	201	0.3	--	--	--	--	--	--
885	201	6.5	--	--	--	--	--	--
886	201	9.6	--	--	--	--	--	--
887	201	0.5	--	--	--	--	--	--
888	201	0.4	--	--	--	--	--	--
889	201	0.5	--	--	--	--	--	--
890	201	0.1	--	--	--	--	--	--
891	201	0.4	--	--	--	--	--	--
892	201	6.1	--	--	--	--	--	--
893	201	0.1	--	--	--	--	--	--
894	201	0.5	--	--	--	--	--	--
895	201	0.1	--	--	--	--	--	--
896	201	0.1	--	--	--	--	--	--
897	201	0.1	--	--	--	--	--	--
898	201	0.2	--	--	--	--	--	--
899	201	0.1	--	--	--	--	--	--
900	201	0.1	--	--	--	--	--	--
901	201	0.1	--	--	--	--	--	--
902	201	0.1	--	--	--	--	--	--
903	201	0.1	--	--	--	--	--	--
904	201	0.1	--	--	--	--	--	--
905	201	0.1	--	--	--	--	--	--
906	201	0.1	--	--	--	--	--	--
907	201	0.5	--	--	--	--	--	--
908	201	0.1	--	--	--	--	--	--
909	201	0.1	--	--	--	--	--	--
910	201	0.1	--	--	--	--	--	--
911	201	0.1	--	--	--	--	--	--
912	201	0.1	--	--	--	--	--	--
913	201	0.1	--	--	--	--	--	--
914	201	0.1	--	--	--	--	--	--
915	201	0.1	--	--	--	--	--	--
916	201	0.1	--	--	--	--	--	--
917	201	0.6	--	--	--	--	--	--
918	201	0.2	--	--	--	--	--	--
919	201	0.1	--	--	--	--	--	--
920	201	0.1	--	--	--	--	--	--
921	201	0.1	--	--	--	--	--	--



Certified by Hart Bichler



Chemex Labs Ltd.

Analytical Chemists • Geochemists • Registered Assayers

212 Brooksbank Ave.
North Vancouver, B.C.
Canada V7J 2C1

Telephone: (604) 984-0221
Telex: 043-52597

CERTIFICATE OF ANALYSIS

TO : MOND GOLD MINES INC.
C/O BEAVON CONSULTING LTD.
8720 MILLMORE RD.
RICHMOND, B.C.
V7C 1S9

** CERT. # : A8518074-002-A
INVOICE # : 18518074
DATE : 8-NOV-85
P.O. # :
MADOC

CC: BEAVON CONSULTING, MADOC, ONT.

Sample description	Prep code	Bi ppm						
922	201	0.1	--	--	--	--	--	--
923	201	0.2	--	--	--	--	--	--
924	201	0.2	--	--	--	--	--	--
925	201	1.1	--	--	--	--	--	--
926	201	0.1	--	--	--	--	--	--
927	201	0.1	--	--	--	--	--	--
928	201	0.1	--	--	--	--	--	--
929	201	0.5	--	--	--	--	--	--
930	201	0.7	--	--	--	--	--	--
931	201	0.1	--	--	--	--	--	--
932	201	0.1	--	--	--	--	--	--
933	201	0.1	--	--	--	--	--	--
934	201	0.2	--	--	--	--	--	--
935	201	0.2	--	--	--	--	--	--
936	201	0.2	--	--	--	--	--	--
937	201	0.1	--	--	--	--	--	--
938	201	0.1	--	--	--	--	--	--
939	201	0.1	--	--	--	--	--	--
940	201	0.1	--	--	--	--	--	--
941	201	0.1	--	--	--	--	--	--
942	201	0.2	--	--	--	--	--	--
943	201	0.1	--	--	--	--	--	--
944	201	0.1	--	--	--	--	--	--
945	201	0.1	--	--	--	--	--	--
946	201	0.1	--	--	--	--	--	--
947	201	0.1	--	--	--	--	--	--
948	201	0.1	--	--	--	--	--	--
949	201	0.2	--	--	--	--	--	--
950	201	0.6	--	--	--	--	--	--
951	201	0.2	--	--	--	--	--	--
952	201	0.2	--	--	--	--	--	--
953	201	0.1	--	--	--	--	--	--
954	201	0.2	--	--	--	--	--	--
1135	201	0.1	--	--	--	--	--	--
1136	201	0.3	--	--	--	--	--	--
1137	201	0.2	--	--	--	--	--	--
1138	201	0.1	--	--	--	--	--	--
1139	201	0.4	--	--	--	--	--	--
1140	201	0.1	--	--	--	--	--	--
1141	201	0.1	--	--	--	--	--	--

Certified by *Hart Buchler*





Chemex Labs Ltd.

Analytical Chemists • Geochemists • Registered Assayers

212 Brooksbank Ave.
North Vancouver, B.C.
Canada V7J 2C1
Telephone: (604) 984-0221
Telex: 043-52597

CERTIFICATE OF ANALYSIS

TO : MOND GOLD MINES INC.
C/O BEAVON CONSULTING LTD.
8720 MILLMORE RD.
RICHMOND, B.C.
V7C 1S9

** CERT. # : A8518074-003-A
INVOICE # : 18518074
DATE : 8-NOV-85
P.O. # :
MADOC

CC: BEAVON CONSULTING, MADOC, ONT.

Sample description	Prep code	Bi ppm						
1142	201	0.1	--	--	--	--	--	--
1143	201	0.7	--	--	--	--	--	--
1144	201	2.3	--	--	--	--	--	--
1145	201	3.4	--	--	--	--	--	--
1146	201	1.1	--	--	--	--	--	--
1147	201	0.2	--	--	--	--	--	--
1148	201	0.5	--	--	--	--	--	--
1149	201	20.0	--	--	--	--	--	--
1150	201	0.7	--	--	--	--	--	--
1151	201	0.3	--	--	--	--	--	--
1152	201	0.9	--	--	--	--	--	--
1153	201	0.2	--	--	--	--	--	--
1154	201	0.3	--	--	--	--	--	--
1155	201	0.3	--	--	--	--	--	--
1156	201	0.3	--	--	--	--	--	--
1157	201	0.1	--	--	--	--	--	--
1158	201	0.1	--	--	--	--	--	--
1159	201	0.2	--	--	--	--	--	--
1160	201	0.1	--	--	--	--	--	--
1161	201	0.1	--	--	--	--	--	--
1162	201	0.1	--	--	--	--	--	--
1163	201	0.1	--	--	--	--	--	--
1164	201	0.1	--	--	--	--	--	--
1165	201	0.1	--	--	--	--	--	--
1166	201	0.2	--	--	--	--	--	--
1167	201	0.1	--	--	--	--	--	--
1168	201	13.0	--	--	--	--	--	--
1169	201	0.2	--	--	--	--	--	--
1170	201	0.1	--	--	--	--	--	--
1171	201	0.2	--	--	--	--	--	--
1172	201	0.2	--	--	--	--	--	--
1173	201	0.2	--	--	--	--	--	--
1174	201	0.1	--	--	--	--	--	--
1175	201	0.1	--	--	--	--	--	--
1176	201	0.1	--	--	--	--	--	--
1177	201	0.1	--	--	--	--	--	--
1178	201	0.1	--	--	--	--	--	--
1179	201	0.1	--	--	--	--	--	--
1180	201	0.1	--	--	--	--	--	--
1181	201	0.1	--	--	--	--	--	--

Hart Buchler

Certified by





Chemex Labs Ltd.

Analytical Chemists • Geochemists • Registered Assayers

212 Brooksbank Ave.
North Vancouver, B.C.
Canada V7J 2C1
Telephone: (604) 984-0221
Telex: 043-52597

CERTIFICATE OF ANALYSIS

TO : MOND GOLD MINES INC.
C/O BEAVON CONSULTING LTD.
8720 MILLMORE RD.
RICHMOND, B.C.
V7C 1S9

** CERT. # : A8518074-004-A
INVOICE # : 18518074
DATE : 8-NOV-85
P.O. # :
MADOC

CC: BEAVON CONSULTING, MADOC, ONT.

Sample description	Prep code	Bi ppm						
✓ 1182	201	1.0	--	--	--	--	--	--
1183	201	0.1	--	--	--	--	--	--
✓ 1184	201	0.1	--	--	--	--	--	--
1185	201	0.1	--	--	--	--	--	--
1186	201	0.2	--	--	--	--	--	--
1187	201	0.1	--	--	--	--	--	--
1188	201	0.5	--	--	--	--	--	--
1189	201	1.8	--	--	--	--	--	--
1190	201	0.2	--	--	--	--	--	--
1191	201	0.1	--	--	--	--	--	--
1192	201	0.1	--	--	--	--	--	--
1193	201	0.7	--	--	--	--	--	--
1194	201	0.1	--	--	--	--	--	--
1195	201	0.1	--	--	--	--	--	--
1196	201	0.1	--	--	--	--	--	--
1197	201	0.2	--	--	--	--	--	--
1198	201	0.1	--	--	--	--	--	--
1199	201	0.7	--	--	--	--	--	--
1200	201	0.2	--	--	--	--	--	--
1201	201	0.2	--	--	--	--	--	--
✓ 1202	201	0.2	--	--	--	--	--	--
1203	201	1.7	--	--	--	--	--	--
1204	201	0.6	--	--	--	--	--	--
1205	201	0.4	--	--	--	--	--	--
1206	201	0.1	--	--	--	--	--	--
1207	201	0.1	--	--	--	--	--	--
1208	201	0.1	--	--	--	--	--	--
1209	201	0.1	--	--	--	--	--	--
1210	201	0.1	--	--	--	--	--	--
1211	201	0.1	--	--	--	--	--	--
1212	201	0.4	--	--	--	--	--	--
1213	201	0.1	--	--	--	--	--	--
1214	201	0.1	--	--	--	--	--	--
✓ 1215	201	0.1	--	--	--	--	--	--
1216	201	0.1	--	--	--	--	--	--
1217	201	0.1	--	--	--	--	--	--
1218	201	0.1	--	--	--	--	--	--
1219	201	0.1	--	--	--	--	--	--
1220	201	0.2	--	--	--	--	--	--
1221	201	0.6	--	--	--	--	--	--

Certified by *Hart Bichler*





Chemex Labs Ltd.

Analytical Chemists • Geochemists • Registered Assayers

212 Brooksbank Ave.
North Vancouver, B.C.
Canada V7J 2C1

Telephone: (604) 984-0221
Telex: 043-52597

CERTIFICATE OF ANALYSIS

TO : MOND GOLD MINES INC.
C/O BEAVON CONSULTING LTD.
8720 MILLMORE RD.
RICHMOND, B.C.
V7C 1S9

** CERT. # : A8518074-005-A
INVOICE # : 18518074
DATE : 8-NOV-85
P.O. # :
MADOC

CC: BEAVON CONSULTING, MADOC, ONT.

Sample description	Prep code	Bi ppm					
1222	201	0.2	--	--	--	--	--
1223	201	0.2	--	--	--	--	--
1224	201	2.3	--	--	--	--	--
1225	201	0.2	--	--	--	--	--
1226	201	0.1	--	--	--	--	--
1227	201	0.1	--	--	--	--	--
1228	201	0.1	--	--	--	--	--
1229	201	0.1	--	--	--	--	--
1230	201	0.4	--	--	--	--	--
1231	201	0.1	--	--	--	--	--
1232	201	0.1	--	--	--	--	--
1233	201	0.4	--	--	--	--	--
1234	201	0.7	--	--	--	--	--
1235	201	0.6	--	--	--	--	--
1236	201	0.5	--	--	--	--	--
1237	201	1.0	--	--	--	--	--
1238	201	0.4	--	--	--	--	--
1239	201	0.1	--	--	--	--	--
1240	201	0.1	--	--	--	--	--
1241	201	0.1	--	--	--	--	--
1242	201	0.1	--	--	--	--	--
1243	201	0.1	--	--	--	--	--
1244	201	1.0	--	--	--	--	--
1245	201	0.2	--	--	--	--	--
1246	201	0.1	--	--	--	--	--
1247	201	0.4	--	--	--	--	--
1248	201	0.3	--	--	--	--	--
1249	201	1.0	--	--	--	--	--
1250	201	0.5	--	--	--	--	--
1251	201	2.6	--	--	--	--	--
1252	201	0.3	--	--	--	--	--
1253	201	0.2	--	--	--	--	--
1254	201	0.1	--	--	--	--	--
1255	201	0.1	--	--	--	--	--
1256	201	0.2	--	--	--	--	--
1257	201	0.1	--	--	--	--	--
1258	201	0.2	--	--	--	--	--
1259	201	0.1	--	--	--	--	--
1260	201	0.1	--	--	--	--	--
1261	201	0.1	--	--	--	--	--

Certified by *Hart Bichler*





Chemex Labs Ltd.

Analytical Chemists • Geochemists • Registered Assayers

212 Brooksbank Ave.
North Vancouver, B.C.
Canada V7J 2C1

Telephone: (604) 984-0221
Telex: 043-52597

CERTIFICATE OF ANALYSIS

TO : MOND GOLD MINES INC.
C/O BEAVON CONSULTING LTD.
8720 MILLMORE RD.
RICHMOND, B.C.
V7C 1S9

** CERT. # : A8518074-006-A
INVOICE # : 18518074
DATE : 8-NOV-85
P.O. # :
MADOC

CC: BEAVON CONSULTING, MADOC, ONT.

Sample description	Prep code	Bi ppm						
1262	201	0.1	--	--	--	--	--	--
1263	201	0.2	--	--	--	--	--	--
1264	201	0.1	--	--	--	--	--	--
1265	201	0.1	--	--	--	--	--	--
1266	201	0.5	--	--	--	--	--	--
1267	201	0.3	--	--	--	--	--	--
1268	201	0.1	--	--	--	--	--	--
1269	201	0.4	--	--	--	--	--	--
1270	201	0.4	--	--	--	--	--	--
1271	201	0.4	--	--	--	--	--	--
1272	201	0.4	--	--	--	--	--	--
1273	201	0.5	--	--	--	--	--	--
1274	201	0.7	--	--	--	--	--	--
1275	201	0.1	--	--	--	--	--	--
1276	201	0.1	--	--	--	--	--	--
1277	201	0.1	--	--	--	--	--	--
1278	201	0.2	--	--	--	--	--	--
1279	201	0.1	--	--	--	--	--	--
1280	201	0.1	--	--	--	--	--	--
1281	201	0.1	--	--	--	--	--	--
1282	201	0.2	--	--	--	--	--	--
1283	201	0.1	--	--	--	--	--	--
1284	201	0.1	--	--	--	--	--	--
1285	201	0.1	--	--	--	--	--	--
1286	201	0.1	--	--	--	--	--	--
1287	201	0.1	--	--	--	--	--	--
1288	201	0.2	--	--	--	--	--	--
1289	201	0.1	--	--	--	--	--	--
1290	201	0.1	--	--	--	--	--	--
1291	201	0.1	--	--	--	--	--	--
1292	201	0.4	--	--	--	--	--	--
1293	201	0.3	--	--	--	--	--	--
1294	201	0.2	--	--	--	--	--	--
1295	201	0.1	--	--	--	--	--	--
1296	201	0.1	--	--	--	--	--	--
1297	201	0.2	--	--	--	--	--	--
1298	201	0.2	--	--	--	--	--	--
1299	201	0.2	--	--	--	--	--	--
1300	201	0.3	--	--	--	--	--	--
1301	201	0.1	--	--	--	--	--	--

Certified by *Hart Bichler*





Chemex Labs Ltd.

Analytical Chemists • Geochemists • Registered Assayers

212 Brooksbank Ave.
North Vancouver, B.C.
Canada V7J 2C1

Telephone: (604) 984-0221
Telex: 043-52597

CERTIFICATE OF ANALYSIS

TO : MOND GOLD MINES INC.
C/O BEAVON CONSULTING LTD.
8720 MILLMORE RD.
RICHMOND, B.C.
V7C 1S9

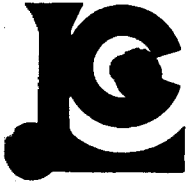
** CERT. # : A8518076-001-A
INVOICE # : 18518076
DATE : 8-NOV-85
P.O. # :
MADOC

CC: BEAVON CONSULTING, MADOC, ONT.

Sample description	Prep code	Bi ppm						
1302	201	0.1	--	--	--	--	--	--
1303	201	0.1	--	--	--	--	--	--
1304	201	0.1	--	--	--	--	--	--
1305	201	0.2	--	--	--	--	--	--
1306	201	0.2	--	--	--	--	--	--
1307	201	0.1	--	--	--	--	--	--
1308	201	0.1	--	--	--	--	--	--
1309	201	0.2	--	--	--	--	--	--
1310	201	0.1	--	--	--	--	--	--
1311	201	0.1	--	--	--	--	--	--
1312	201	0.1	--	--	--	--	--	--
1313	201	0.1	--	--	--	--	--	--
1314	201	0.2	--	--	--	--	--	--
1315	201	0.1	--	--	--	--	--	--
1316	201	0.2	--	--	--	--	--	--
1317	201	0.2	--	--	--	--	--	--
1318	201	0.3	--	--	--	--	--	--
1319	201	0.1	--	--	--	--	--	--
1320	201	0.2	--	--	--	--	--	--
1321	201	0.1	--	--	--	--	--	--
1322	201	0.2	--	--	--	--	--	--
1323	201	0.2	--	--	--	--	--	--
1324	201	0.2	--	--	--	--	--	--
1325	201	0.2	--	--	--	--	--	--
1326	201	0.2	--	--	--	--	--	--
1327	201	0.3	--	--	--	--	--	--
1328	201	0.2	--	--	--	--	--	--
1329	201	0.1	--	--	--	--	--	--
1330	201	0.1	--	--	--	--	--	--
1331	201	0.1	--	--	--	--	--	--
1332	201	0.2	--	--	--	--	--	--
1333	201	1.0	--	--	--	--	--	--
1334	201	0.1	--	--	--	--	--	--
1335	201	0.1	--	--	--	--	--	--
1336	201	0.1	--	--	--	--	--	--
1337	201	0.5	--	--	--	--	--	--
1338	201	0.1	--	--	--	--	--	--
1339	201	1.0	--	--	--	--	--	--
1340	201	0.5	--	--	--	--	--	--
1341	201	0.1	--	--	--	--	--	--



Certified by *Hart Buchler*



Chemex Labs Ltd.

Analytical Chemists • Geochemists • Registered Assayers

212 Brooksbank Ave.
North Vancouver, B.C.
Canada V7J 2C1
Telephone: (604) 984-0221
Telex: 043-52597

CERTIFICATE OF ANALYSIS

TO : MONO GOLD MINES INC.
C/O BEAVON CONSULTING LTD.
8720 MILLMORE RD.
RICHMOND, B.C.
V7C 1S9

** CERT. # : A8518076-002-A
INVOICE # : 18518076
DATE : 8-NOV-85
P.O. # :
MADOC

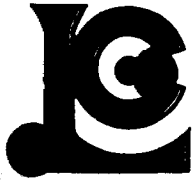
CC: BEAVON CONSULTING, MADOC, ONT.

Sample description	Prep code	Bi ppm						
1342	201	0.1	--	--	--	--	--	--
1343	201	0.1	--	--	--	--	--	--
1344	201	0.1	--	--	--	--	--	--
1345	201	0.2	--	--	--	--	--	--
1346	201	0.2	--	--	--	--	--	--
1347	201	0.6	--	--	--	--	--	--
1348	201	0.2	--	--	--	--	--	--
1349	201	0.1	--	--	--	--	--	--
1350	201	0.1	--	--	--	--	--	--
1351	201	0.2	--	--	--	--	--	--
1352	201	0.2	--	--	--	--	--	--
1353	201	0.3	--	--	--	--	--	--
1354	201	0.2	--	--	--	--	--	--
1355	201	0.1	--	--	--	--	--	--
1356	201	0.1	--	--	--	--	--	--
1357	201	0.1	--	--	--	--	--	--
1358	201	0.2	--	--	--	--	--	--
1359	201	0.1	--	--	--	--	--	--
1360	201	0.1	--	--	--	--	--	--
1361	201	0.1	--	--	--	--	--	--
1362	201	0.1	--	--	--	--	--	--
1363	201	0.1	--	--	--	--	--	--
1364	201	0.1	--	--	--	--	--	--
1365	201	0.1	--	--	--	--	--	--
1366	201	0.2	--	--	--	--	--	--
1367	201	0.2	--	--	--	--	--	--
1368	201	0.1	--	--	--	--	--	--
1369	201	0.1	--	--	--	--	--	--
1370	201	0.1	--	--	--	--	--	--
1371	201	0.6	--	--	--	--	--	--
1372	201	0.2	--	--	--	--	--	--
1373	201	0.2	--	--	--	--	--	--
1374	201	0.1	--	--	--	--	--	--
1375	201	0.1	--	--	--	--	--	--
1376	201	0.2	--	--	--	--	--	--
1377	201	0.1	--	--	--	--	--	--
1378	201	0.3	--	--	--	--	--	--
1379	201	0.1	--	--	--	--	--	--
1380	201	0.2	--	--	--	--	--	--
1381	201	0.1	--	--	--	--	--	--

Hart Buchler

Certified by





Chemex Labs Ltd.

Analytical Chemists • Geochemists • Registered Assayers

212 Brooksbank Ave.
North Vancouver, B.C.
Canada V7J 2C1
Telephone: (604) 984-0221
Telex: 043-52597

CERTIFICATE OF ANALYSIS

TO : MOND GOLD MINES INC.
C/O BEAVON CONSULTING LTD.
8720 MILLMORE RD.
RICHMOND, B.C.
V7C 1S9

** CERT. # : A8518076-003-A
INVOICE # : 18518076
DATE : 8-NOV-85
P.O. # :
MADOC

CC: BEAVON CONSULTING, MADOC, ONT.

Sample description	Prep code	Bi ppm						
1382	201	0.3	--	--	--	--	--	--
1383	201	0.2	--	--	--	--	--	--
1384	201	4.6	--	--	--	--	--	--
1385	201	0.2	--	--	--	--	--	--
1386	201	0.3	--	--	--	--	--	--
1387	201	1.3	--	--	--	--	--	--
1388	201	0.2	--	--	--	--	--	--
1389	201	0.4	--	--	--	--	--	--
1390	201	0.2	--	--	--	--	--	--
1391	201	0.4	--	--	--	--	--	--
1392	201	0.1	--	--	--	--	--	--
1393	201	0.2	--	--	--	--	--	--
1394	201	0.1	--	--	--	--	--	--
1395	201	0.2	--	--	--	--	--	--
1396	201	0.2	--	--	--	--	--	--
1397	201	0.2	--	--	--	--	--	--
1398	201	0.1	--	--	--	--	--	--
1399	201	0.2	--	--	--	--	--	--
1400	201	1.0	--	--	--	--	--	--
1401	201	0.1	--	--	--	--	--	--
1402	201	0.2	--	--	--	--	--	--
1403	201	0.2	--	--	--	--	--	--
1404	201	1.2	--	--	--	--	--	--
1405	201	1.0	--	--	--	--	--	--
1406	201	2.4	--	--	--	--	--	--
1407	201	0.2	--	--	--	--	--	--
1408	201	0.5	--	--	--	--	--	--
1409	201	0.6	--	--	--	--	--	--
1410	201	0.2	--	--	--	--	--	--
1411	201	0.1	--	--	--	--	--	--
1412	201	0.2	--	--	--	--	--	--
1413	201	0.4	--	--	--	--	--	--
1414	201	0.6	--	--	--	--	--	--
1415	201	0.1	--	--	--	--	--	--
1416	201	0.2	--	--	--	--	--	--
1417	201	0.2	--	--	--	--	--	--
1418	201	0.2	--	--	--	--	--	--
1419	201	0.1	--	--	--	--	--	--
1420	201	0.2	--	--	--	--	--	--
1421	201	0.1	--	--	--	--	--	--

Certified by *Hart Buchler*





Chemex Labs Ltd.

Analytical Chemists • Geochemists • Registered Assayers

212 Brooksbank Ave.
North Vancouver, B.C.
Canada V7J 2C1

Telephone: (604) 984-0221
Telex: 043-52597

CERTIFICATE OF ANALYSIS

TO : MOND GOLD MINES INC.
C/O BEAVON CONSULTING LTD.
8720 MILLMORE RD.
RICHMOND, B.C.
V7C 1S9

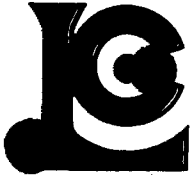
** CERT. # : A8518076-004-A
INVOICE # : 18518076
DATE : 8-NOV-85
P.O. # :
MADOC

CC: BEAVON CONSULTING, MADOC, ONT.

Sample description	Prep code	Bi ppm						
1422	201	0.1	--	--	--	--	--	--
1423	201	0.2	--	--	--	--	--	--
1424	201	0.1	--	--	--	--	--	--
1425	201	0.2	--	--	--	--	--	--
1426	201	0.2	--	--	--	--	--	--
1427	201	0.1	--	--	--	--	--	--
1428	201	0.1	--	--	--	--	--	--
1429	201	0.1	--	--	--	--	--	--
1430	201	0.1	--	--	--	--	--	--
1431	201	0.2	--	--	--	--	--	--
1432	201	0.1	--	--	--	--	--	--
1433	201	0.7	--	--	--	--	--	--
1434	201	1.0	--	--	--	--	--	--
1435	201	0.2	--	--	--	--	--	--
1436	201	0.3	--	--	--	--	--	--
1437	201	0.1	--	--	--	--	--	--
1438	201	0.1	--	--	--	--	--	--
1439	201	0.2	--	--	--	--	--	--
1440	201	0.1	--	--	--	--	--	--
1441	201	1.0	--	--	--	--	--	--
1442	201	0.1	--	--	--	--	--	--
1443	201	0.1	--	--	--	--	--	--
1445	201	0.1	--	--	--	--	--	--
1446	201	0.1	--	--	--	--	--	--
1447	201	0.2	--	--	--	--	--	--
1448	201	0.1	--	--	--	--	--	--
1449	201	0.2	--	--	--	--	--	--
1450	201	0.1	--	--	--	--	--	--
1451	201	0.2	--	--	--	--	--	--
1501	201	0.2	--	--	--	--	--	--
1502	201	0.2	--	--	--	--	--	--
1503	201	0.2	--	--	--	--	--	--
1504	201	0.1	--	--	--	--	--	--
1505	201	0.2	--	--	--	--	--	--
1506	201	0.2	--	--	--	--	--	--
1507	201	0.1	--	--	--	--	--	--
1508	201	0.2	--	--	--	--	--	--
1509	201	0.1	--	--	--	--	--	--
1510	201	0.2	--	--	--	--	--	--
1511	201	0.2	--	--	--	--	--	--



Certified by *Hart Bichler*



Chemex Labs Ltd.

Analytical Chemists • Geochemists • Registered Assayers

212 Brooksbank Ave.
North Vancouver, B.C.
Canada V7J 2C1

Telephone: (604) 984-0221
Telex: 043-52597

CERTIFICATE OF ANALYSIS

TO : MONO GOLD MINES INC.
C/O BEAVON CONSULTING LTD.
8720 MILLMORE RD.
RICHMOND, B.C.
V7C 1S9

** CERT. # : A8518076-005-A
INVOICE # : 18518076
DATE : 8-NOV-85
P.O. # :
MADOC

CC: BEAVON CONSULTING, MADOC, ONT.

Sample description	Prep code	Bi ppm						
1512	201	0.1	--	--	--	--	--	--
1513	201	0.2	--	--	--	--	--	--
1514	201	0.2	--	--	--	--	--	--



Certified by *Hart Bickler*



Chemex Labs Ltd.

Analytical Chemists • Geochemists • Registered Assayers

212 Brooksbank Ave.
North Vancouver, B.C.
Canada V7J 2C1
Phone: (604) 984-0221
Telex: 043-52597

CERTIFICATE OF ANALYSIS

TO : MOND GOLD MINES INC.
C/O BEAVON CONSULTING LTD.
8720 MILLMORE RD.
RICHMOND, B.C.
V7C 1S9

CERT. # : A8518641-001-A
INVOICE # : 18518641
DATE : 6-DEC-85
P.O. # :
MADOC

CC: BEAVON CONSULTING, MADOC, ONT.

Sample description	Prep code	Bi ppm	Te ppm					
4157	201	0.1	--	--	--	--	--	--
4158	201	0.1	--	--	--	--	--	--
4159	201	0.1	--	--	--	--	--	--
4160	201	1.1	--	--	--	--	--	--
4161	201	0.3	--	--	--	--	--	--
4162	201	0.2	--	--	--	--	--	--
4163	201	0.3	--	--	--	--	--	--
4164	201	0.2	--	--	--	--	--	--
4165	201	0.1	--	--	--	--	--	--
4166	201	0.1	--	--	--	--	--	--
4167	201	0.1	--	--	--	--	--	--
4168	201	0.1	--	--	--	--	--	--
4169	201	0.1	--	--	--	--	--	--
4170	201	0.1	--	--	--	--	--	--
4171	201	0.1	--	--	--	--	--	--
4172	201	0.4	--	--	--	--	--	--
4173	201	0.1	--	--	--	--	--	--
4174	201	0.1	--	--	--	--	--	--
4175	201	0.1	--	--	--	--	--	--
4176	201	0.2	--	--	--	--	--	--
4177	201	0.1	--	--	--	--	--	--
4178	201	0.1	--	--	--	--	--	--
4179	201	0.2	--	--	--	--	--	--
4180	201	0.2	--	--	--	--	--	--
4181	201	0.2	--	--	--	--	--	--
4182	201	0.3	--	--	--	--	--	--
4183	201	0.2	--	--	--	--	--	--
4184	201	0.2	--	--	--	--	--	--
4185	201	0.2	--	--	--	--	--	--
4186	201	0.2	--	--	--	--	--	--
4187	201	0.1	--	--	--	--	--	--
4188	201	0.1	--	--	--	--	--	--
4189	201	0.1	--	--	--	--	--	--
4190	201	0.1	--	--	--	--	--	--
4191	201	0.2	--	--	--	--	--	--
4192	201	0.1	--	--	--	--	--	--
4193	201	0.2	--	--	--	--	--	--
4194	201	0.1	--	--	--	--	--	--
4195	201	0.1	--	--	--	--	--	--
4196	201	0.1	--	--	--	--	--	--

Certified by Hart Bichler



Chemex Labs Ltd.

Analytical Chemists • Geochemists • Registered Assayers

212 Brooksbank Ave.
North Vancouver, B.C.
Canada V7J 2C1
Phone: (604) 984-0221
Telex: 043-52597

CERTIFICATE OF ANALYSIS

TO : MOND GOLD MINES INC.
C/O BEAVON CONSULTING LTD.
8720 MILLMORE RD.
RICHMOND, B.C.
V7C 1S9

CERT. # : A8518641-002-A
INVOICE # : 18518641
DATE : 6-DEC-85
P.O. # :
MADOC

CC: BEAVON CONSULTING, MADOC, ONT.

Sample description	Prep code	Bi ppm	Te ppm					
4197	201	0.1	--	--	--	--	--	--
4198	201	0.1	--	--	--	--	--	--
4199	201	0.1	--	--	--	--	--	--
4200	201	0.1	--	--	--	--	--	--
4201	201	0.1	--	--	--	--	--	--
4202	201	0.1	--	--	--	--	--	--
4203	201	0.1	--	--	--	--	--	--
4204	201	0.1	--	--	--	--	--	--
4205	201	0.1	--	--	--	--	--	--
4206	201	0.1	--	--	--	--	--	--
4207	201	0.1	--	--	--	--	--	--
4208	201	0.1	--	--	--	--	--	--
4209	201	0.1	--	--	--	--	--	--
4210	201	0.2	--	--	--	--	--	--
4211	201	0.1	--	--	--	--	--	--
4212	201	0.2	--	--	--	--	--	--
4213	201	0.2	--	--	--	--	--	--
4214	201	0.2	--	--	--	--	--	--
4215	201	0.1	--	--	--	--	--	--
4216	201	0.2	--	--	--	--	--	--
4217	201	0.5	--	--	--	--	--	--
4218	201	0.2	--	--	--	--	--	--
4219	201	0.2	--	--	--	--	--	--
4220	201	0.9	--	--	--	--	--	--
4221	201	0.2	--	--	--	--	--	--
4222	201	0.1	--	--	--	--	--	--
4223	201	0.1	--	--	--	--	--	--
4224	201	0.2	--	--	--	--	--	--
4225	201	0.1	--	--	--	--	--	--
4226	201	0.2	--	--	--	--	--	--
4227	201	0.1	--	--	--	--	--	--
4228	201	0.2	--	--	--	--	--	--
4229	201	0.4	--	--	--	--	--	--
4230	201	0.2	--	--	--	--	--	--
4231	201	0.1	--	--	--	--	--	--
4232	201	0.1	--	--	--	--	--	--
4233	201	0.1	--	--	--	--	--	--
4234	201	0.1	--	--	--	--	--	--
4235	201	0.1	--	--	--	--	--	--
4236	201	0.1	--	--	--	--	--	--

VOI rev. 4/85

Certified by *H. B. Schler*



Chemex Labs Ltd.

Analytical Chemists • Geochemists • Registered Assayers

212 Brooksbank Ave.
North Vancouver, B.C.
Canada V7J 2C1

Phone: (604) 984-0221
Telex: 043-52597

CERTIFICATE OF ANALYSIS

TO : MOND GOLD MINES INC.
C/O BEAVON CONSULTING LTD.
8720 MILLMORE RD.
RICHMOND, B.C.
V7C 1S9

CERT. # : A8518641-003-A
INVOICE # : 18518641
DATE : 6-DEC-85
P.O. # :
MADOC

CC: BEAVON CONSULTING, MADOC, ONT.

Sample description	Prep code	Bi ppm	Te ppm				
4237	201	0.3	--	--	--	--	--
4238	201	0.1	--	--	--	--	--
4239	201	0.1	--	--	--	--	--
4240	201	0.2	--	--	--	--	--
4241	201	0.1	--	--	--	--	--
4242	201	0.1	--	--	--	--	--
4243	201	0.1	--	--	--	--	--
4244	201	0.1	--	--	--	--	--
4245	201	0.2	--	--	--	--	--
4246	201	0.1	--	--	--	--	--
4247	201	0.1	--	--	--	--	--
4248	201	0.1	--	--	--	--	--
4249	201	0.1	--	--	--	--	--
4250	201	0.1	--	--	--	--	--
4251	201	0.1	--	--	--	--	--
4252	201	0.2	--	--	--	--	--
4253	201	0.1	--	--	--	--	--
4254	201	0.2	--	--	--	--	--
4255	201	0.3	--	--	--	--	--
4256	201	0.3	--	--	--	--	--
4257	201	0.4	--	--	--	--	--
4258	201	0.2	--	--	--	--	--
4259	201	0.1	--	--	--	--	--
4260	201	0.1	--	--	--	--	--
4261	201	0.1	--	--	--	--	--
4262	201	0.4	--	--	--	--	--
4263	201	0.1	--	--	--	--	--
4264	201	0.1	--	--	--	--	--
4265	201	0.3	--	--	--	--	--
4266	201	0.3	--	--	--	--	--
4267	201	1.1	--	--	--	--	--
4268	201	1.2	--	--	--	--	--
4269	201	1.0	--	--	--	--	--
4270	201	0.2	--	--	--	--	--
4271	201	1.5	--	--	--	--	--
4272	201	0.7	--	--	--	--	--
4273	201	0.3	--	--	--	--	--
4274	201	0.1	--	--	--	--	--
4275	201	6.2	<0.05	--	--	--	--
4276	201	0.1	<0.05	--	--	--	--

VOI rev. 4/85

Certified by Hart Bichler



Chemex Labs Ltd.

Analytical Chemists • Geochemists • Registered Assayers

212 Brooksbank Ave.
North Vancouver, B.C.
Canada V7J 2C1

Phone: (604) 984-0221

Telex: 043-52597

CERTIFICATE OF ANALYSIS

TO : MOND GOLD MINES INC.
C/O BEAVON CONSULTING LTD.
8720 MILLMORE RD.
RICHMOND, B.C.
V7C 1S9

CERT. # : A8518641-004-A
INVOICE # : 18518641
DATE : 6-DEC-85
P.O. # :
MADOC

CC: BEAVON CONSULTING, MADOC, ONT.

Sample description	Prep code	Bi ppm	Te ppm				
4277	201	0.1	0.10	--	--	--	--
4278	201	0.1	--	--	--	--	--
4279	201	0.1	--	--	--	--	--
4280	201	0.1	--	--	--	--	--
4281	201	0.1	--	--	--	--	--
4282	201	0.1	--	--	--	--	--
4283	201	0.1	--	--	--	--	--
4284	201	0.1	--	--	--	--	--
4285	201	0.1	--	--	--	--	--
4286	201	0.1	--	--	--	--	--
4287	201	0.3	--	--	--	--	--
4288	201	0.1	--	--	--	--	--
4289	201	0.1	--	--	--	--	--
4290	201	0.1	--	--	--	--	--
4291	201	1.0	--	--	--	--	--
4292	201	0.4	--	--	--	--	--
4293	201	0.2	--	--	--	--	--
4294	201	0.2	--	--	--	--	--
4295	201	0.3	--	--	--	--	--
4296	201	0.1	--	--	--	--	--
4297	201	2.5	--	--	--	--	--
4298	201	0.1	--	--	--	--	--
4299	201	0.1	--	--	--	--	--
4300	201	0.1	--	--	--	--	--
4301	201	0.1	--	--	--	--	--
4302	201	0.1	--	--	--	--	--
4303	201	0.1	--	--	--	--	--
4304	201	0.1	--	--	--	--	--
4305	201	0.1	--	--	--	--	--
4306	201	0.1	--	--	--	--	--
4307	201	0.2	--	--	--	--	--
4308	201	0.1	--	--	--	--	--
4309	201	2.0	--	--	--	--	--
4310	201	0.1	<0.05	--	--	--	--
4311	201	0.1	<0.05	--	--	--	--
4312	201	0.1	<0.05	--	--	--	--
4313	201	0.1	<0.05	--	--	--	--
4314	201	0.1	<0.05	--	--	--	--
4315	201	1.0	<0.05	--	--	--	--
4316	201	0.2	<0.05	--	--	--	--

VOI rev. 4/85

Certified by *Hart Bichler*



Chemex Labs Ltd.

Analytical Chemists • Geochemists • Registered Assayers

212 Brooksbank Ave.
North Vancouver, B.C.
Canada V7J 2C1
Phone: (604) 984-0221
Telex: 043-52597

CERTIFICATE OF ANALYSIS

TO : MOND GOLD MINES INC.
C/O BEAVON CONSULTING LTD.
8720 MILLMORE RD.
RICHMOND, B.C.
V7C 1S9

CERT. # : A8518641-005-A
INVOICE # : I8518641
DATE : 6-DEC-85
P.O. # :
MADOC

CC: BEAVON CONSULTING, MADOC, ONT.

Sample description	Prep code	Bi ppm	Te ppm				
4317	201	0.3	<0.05	--	--	--	--
4318	201	0.1	<0.05	--	--	--	--
4319	201	0.3	0.05	--	--	--	--
4320	201	0.2	<0.05	--	--	--	--
4321	201	0.1	<0.05	--	--	--	--
4322	201	0.1	--	--	--	--	--
4323	201	0.1	--	--	--	--	--
4324	201	0.2	--	--	--	--	--
4325	201	0.1	--	--	--	--	--
4326	201	0.1	--	--	--	--	--
4327	201	0.1	--	--	--	--	--
4328	201	0.1	--	--	--	--	--
4329	201	0.1	--	--	--	--	--
4330	201	0.1	--	--	--	--	--
4331	201	0.1	--	--	--	--	--
4332	201	0.4	--	--	--	--	--
4333	201	0.1	--	--	--	--	--
4334	201	0.1	--	--	--	--	--
4335	201	0.2	--	--	--	--	--
4336	201	0.1	--	--	--	--	--
4337	201	0.2	--	--	--	--	--
4338	201	0.1	--	--	--	--	--
4339	201	0.1	--	--	--	--	--
4340	201	0.2	--	--	--	--	--
4341	201	0.1	--	--	--	--	--
4342	201	0.1	--	--	--	--	--
4343	201	0.1	--	--	--	--	--
4344	201	0.2	--	--	--	--	--
4345	201	0.1	--	--	--	--	--
4346	201	0.2	--	--	--	--	--
4347	201	0.2	--	--	--	--	--
4348	201	0.3	--	--	--	--	--
4349	201	0.5	--	--	--	--	--
4350	201	0.4	--	--	--	--	--
4351	201	0.1	--	--	--	--	--
4352	201	0.1	--	--	--	--	--
4353	201	0.2	--	--	--	--	--
4354	201	0.2	--	--	--	--	--
4355	201	0.1	--	--	--	--	--
4356	201	0.3	--	--	--	--	--

VOI rev. 4/85

Certified by Hart Bichler



Chemex Labs Ltd.

Analytical Chemists • Geochemists • Registered Assayers

212 Brooksbank Ave.
North Vancouver, B.C.
Canada V7J 2C1

Phone: (604) 984-0221
Telex: 043-52597

CERTIFICATE OF ANALYSIS

TO : MOND GOLD MINES INC.
C/O BEAVON CONSULTING LTD.
8720 MILLMORE RD.
RICHMOND, B.C.
V7C 1S9

CERT. # : A8518641-006-A
INVOICE # : 18518641
DATE : 6-DEC-85
P.O. # :
MADOC :

CC: BEAVON CONSULTING, MADOC, ONT.

Sample description	Prep code	Bi ppm	Te ppm					
4357	201	0.9	--	--	--	--	--	--
4358	201	0.3	--	--	--	--	--	--
4359	201	0.9	--	--	--	--	--	--
4360	201	27.0	--	--	--	--	--	--
4361	201	0.4	--	--	--	--	--	--
4362	201	0.5	--	--	--	--	--	--
4363	201	0.7	--	--	--	--	--	--
4364	201	0.5	--	--	--	--	--	--
4365	201	0.6	--	--	--	--	--	--
4366	201	0.8	--	--	--	--	--	--
4367	201	0.1	--	--	--	--	--	--
4368	201	0.3	--	--	--	--	--	--
4369	201	0.2	--	--	--	--	--	--
4370	201	0.1	--	--	--	--	--	--
4371	201	0.2	--	--	--	--	--	--
4372	201	0.2	--	--	--	--	--	--
4373	201	0.2	--	--	--	--	--	--
4374	201	0.1	--	--	--	--	--	--
4375	201	0.2	--	--	--	--	--	--
4376	201	0.3	--	--	--	--	--	--
4377	201	0.1	--	--	--	--	--	--
4378	201	0.1	--	--	--	--	--	--
4379	201	0.1	--	--	--	--	--	--
4380	201	0.2	--	--	--	--	--	--
4381	201	10.0	--	--	--	--	--	--
4382	201	0.1	--	--	--	--	--	--
4383	201	1.7	--	--	--	--	--	--
4384	201	0.2	--	--	--	--	--	--
4385	201	0.1	--	--	--	--	--	--
4386	201	0.1	--	--	--	--	--	--
4387	201	0.2	--	--	--	--	--	--
4388	201	0.1	--	--	--	--	--	--
4389	201	0.2	--	--	--	--	--	--
4390	201	0.3	--	--	--	--	--	--
4391	201	0.2	--	--	--	--	--	--
4392	201	0.5	--	--	--	--	--	--
4393	201	0.4	--	--	--	--	--	--
4394	201	0.1	--	--	--	--	--	--
4395	201	0.1	--	--	--	--	--	--
4396	201	0.1	--	--	--	--	--	--

VOI rev. 4/85

Certified by *Hart Bichler*



Chemex Labs Ltd.

Analytical Chemists • Geochemists • Registered Assayers

212 Brooksbank Ave.
North Vancouver, B.C.
Canada V7J 2C1
Phone: (604) 984-0221
Telex: 043-52597

CERTIFICATE OF ANALYSIS

TO : MOND GOLD MINES INC.
C/O BEAVON CONSULTING LTD.
8720 MILLMORE RD.
RICHMOND, B.C.
V7C 1S9

CERT. # : A8518641-007-A
INVOICE # : I8518641
DATE : 6-DEC-85
P.O. # :
MADOC

CC: BEAVON CONSULTING, MADOC, ONT.

Sample description	Prep code	Bi ppm	Te ppm				
4397	201	0.1	--	--	--	--	--
4398	201	0.1	--	--	--	--	--
4399	201	0.2	--	--	--	--	--
4400	201	0.1	--	--	--	--	--
4401	201	0.1	--	--	--	--	--
4402	201	0.1	--	--	--	--	--
4403	201	0.1	--	--	--	--	--
4404	201	0.1	--	--	--	--	--
4405	201	0.2	--	--	--	--	--
4406	201	0.4	--	--	--	--	--
4407	201	0.1	--	--	--	--	--
4408	201	0.2	--	--	--	--	--
4409	201	0.2	--	--	--	--	--
4410	201	0.3	--	--	--	--	--
4411	201	0.1	--	--	--	--	--
4412	201	0.1	--	--	--	--	--
4413	201	0.2	--	--	--	--	--
4414	201	0.7	--	--	--	--	--
4415	201	0.2	--	--	--	--	--
4416	201	0.1	--	--	--	--	--
4417	201	0.2	--	--	--	--	--
4418	201	0.2	--	--	--	--	--
4419	201	0.2	--	--	--	--	--
4420	201	0.2	--	--	--	--	--
4421	201	0.2	--	--	--	--	--
4422	201	0.1	--	--	--	--	--
4423	201	0.4	--	--	--	--	--
4424	201	0.2	--	--	--	--	--
4425	201	0.1	--	--	--	--	--
4426	201	0.1	--	--	--	--	--
4427	201	0.1	--	--	--	--	--
4428	201	0.1	--	--	--	--	--
4429	201	0.4	--	--	--	--	--
4430	201	0.1	--	--	--	--	--
4431	201	0.1	--	--	--	--	--
4432	201	0.1	--	--	--	--	--
4433	201	0.2	--	--	--	--	--
4434	201	0.2	--	--	--	--	--
4435	201	0.2	--	--	--	--	--
4436	201	0.1	--	--	--	--	--

Hart Buchler

Certified by



Chemex Labs Ltd.

Analytical Chemists • Geochemists • Registered Assayers

212 Brooksbank Ave.
North Vancouver, B.C.
Canada V7J 2C1

Phone: (604) 984-0221
Telex: 043-52597

CERTIFICATE OF ANALYSIS

TO : MOND GOLD MINES INC.
C/O BEAVON CONSULTING LTD.
8720 MILLMORE RD.
RICHMOND, B.C.
V7C 1S9

CERT. # : A8518641-008-A
INVOICE # : I8518641
DATE : 6-DEC-85
P.O. # :
MADOC

CC: BEAVON CONSULTING, MADOC, ONT.

Sample description	Prep code	Bi ppm	Te ppm				
4437	201	0.2	--	--	--	--	--
4438	201	0.2	--	--	--	--	--
4439	201	0.1	--	--	--	--	--
4440	201	0.1	--	--	--	--	--
4441	201	0.1	--	--	--	--	--
4442	201	0.1	--	--	--	--	--
4443	201	0.1	--	--	--	--	--
4444	201	0.1	--	--	--	--	--
4501	201	0.7	--	--	--	--	--
4502	201	0.1	--	--	--	--	--
4503	201	0.6	--	--	--	--	--
4504	201	0.2	--	--	--	--	--
4505	201	0.1	--	--	--	--	--
4506	201	1.0	--	--	--	--	--
4507	201	1.2	0.05	--	--	--	--
4509	201	0.3	<0.05	--	--	--	--
4510	201	3.1	<0.05	--	--	--	--
4511	201	3.6	0.05	--	--	--	--
4512	201	27.0	0.05	--	--	--	--
4513	201	0.4	<0.05	--	--	--	--
4514	201	0.6	--	--	--	--	--
4515	201	1.2	--	--	--	--	--
4516	201	0.7	--	--	--	--	--
4517	201	0.2	--	--	--	--	--
4518	201	0.1	--	--	--	--	--
4519	201	0.2	--	--	--	--	--
4520	201	0.4	--	--	--	--	--
4521	201	0.3	--	--	--	--	--
4522	201	0.1	--	--	--	--	--
4523	201	0.2	--	--	--	--	--
4524	201	0.1	--	--	--	--	--
4525	201	0.2	--	--	--	--	--
4526	201	0.2	--	--	--	--	--
4527	201	0.1	--	--	--	--	--
4528	201	0.9	--	--	--	--	--
4529	201	0.1	--	--	--	--	--
4530	201	0.2	--	--	--	--	--
4531	201	0.3	--	--	--	--	--
4532	201	0.3	--	--	--	--	--
4533	201	0.9	--	--	--	--	--

VOI rev. 4/85

Certified by Hart Bichler



Chemex Labs Ltd.

Analytical Chemists • Geochemists • Registered Assayers

212 Brooksbank Ave.
North Vancouver, B.C.
Canada V7J 2C1

Phone: (604) 984-0221
Telex: 043-52597

CERTIFICATE OF ANALYSIS

TO : MOND GOLD MINES INC.
C/O BEAVON CONSULTING LTD.
8720 MILLMORE RD.
RICHMOND, B.C.
V7C 1S9

CERT. # : A8518641-009-A
INVOICE # : 18518641
DATE : 6-DEC-85
P.O. # :
MADOC

CC: BEAVON CONSULTING, MADOC, ONT.

Sample description	Prep code	Bi ppm	Te ppm					
4534	201	0.5	--	--	--	--	--	--
4535	201	0.2	--	--	--	--	--	--
4536	201	0.1	--	--	--	--	--	--

Certified by *Heath Richler*



Chemex Labs Ltd.

Analytical Chemists • Geochemists • Registered Assayers

212 Brooksbank Ave.
North Vancouver, B.C.
Canada V7J 2C1

Telephone: (604) 984-0221
Telex: 043-52597

CERTIFICATE OF ANALYSIS

TO : MOND GOLD MINES INC.
C/O BEAVON CONSULTING LTD.
8720 MILLMORE RD.
RICHMOND, B.C.
V7C 1S9

CERT. # : A8518764-001-A
INVOICE # : I8518764
DATE : 11-DEC-85
P.O. # :
MADUC

CC: BEAVON CONSULTING, MADUC, UNT.

Sample description	Prep code	Bi ppm						
4721	201	0.1	--	--	--	--	--	--
4722	201	0.1	--	--	--	--	--	--
4723	201	0.1	--	--	--	--	--	--
4724	201	0.1	--	--	--	--	--	--
4725	201	0.1	--	--	--	--	--	--
4726	201	0.1	--	--	--	--	--	--
4727	201	0.1	--	--	--	--	--	--
4728	201	0.1	--	--	--	--	--	--
4729	201	0.1	--	--	--	--	--	--
4730	201	0.1	--	--	--	--	--	--
4731	201	0.1	--	--	--	--	--	--
4732	201	0.1	--	--	--	--	--	--
4733	201	0.2	--	--	--	--	--	--
4734	201	0.2	--	--	--	--	--	--
4735	201	0.1	--	--	--	--	--	--
4736	201	0.1	--	--	--	--	--	--
4737	201	0.1	--	--	--	--	--	--
4738	201	0.1	--	--	--	--	--	--
4739	201	0.1	--	--	--	--	--	--
4740	201	0.1	--	--	--	--	--	--
4741	201	0.3	--	--	--	--	--	--
4742	201	0.2	--	--	--	--	--	--
4743	201	0.2	--	--	--	--	--	--
4744	201	0.1	--	--	--	--	--	--
4745	201	0.1	--	--	--	--	--	--
4746	201	0.1	--	--	--	--	--	--
4747	201	0.1	--	--	--	--	--	--
4748	201	0.1	--	--	--	--	--	--
4749	201	0.2	--	--	--	--	--	--
4750	201	0.1	--	--	--	--	--	--
4751	201	0.1	--	--	--	--	--	--
4752	201	0.1	--	--	--	--	--	--
4753	201	0.1	--	--	--	--	--	--
4754	201	0.1	--	--	--	--	--	--
4755	201	0.2	--	--	--	--	--	--
4756	201	0.1	--	--	--	--	--	--
4757	201	0.2	--	--	--	--	--	--
4758	201	0.1	--	--	--	--	--	--
4759	201	0.1	--	--	--	--	--	--
4760	201	0.1	--	--	--	--	--	--

Certified by *Hart Buchler*





Chemex Labs Ltd.

Analytical Chemists • Geochemists • Registered Assayers

212 Brooksbank Ave.
North Vancouver, B.C.
Canada V7J 2C1
Telephone: (604) 984-0221
Telex: 043-52597

CERTIFICATE OF ANALYSIS

TO : MOND GOLD MINES INC.
C/O BEAVON CONSULTING LTD.
8720 MILLMORE RD.
RICHMOND, B.C.
V7C 1S9

CERT. # : A8518764-002-A
INVOICE # : I8518764
DATE : 11-DEC-85
P.O. # :
MADOC

CC: BEAVON CONSULTING, MADOC, DNT.

Sample description	Prep code	Bi ppm						
4761	201	0.1	--	--	--	--	--	--
4762	201	0.3	--	--	--	--	--	--
4763	201	0.1	--	--	--	--	--	--
4764	201	0.1	--	--	--	--	--	--
4765	201	0.2	--	--	--	--	--	--
4766	201	0.1	--	--	--	--	--	--
4767	201	0.1	--	--	--	--	--	--
4768	201	0.1	--	--	--	--	--	--
4769	201	0.1	--	--	--	--	--	--
4770	201	0.1	--	--	--	--	--	--
4771	201	0.1	--	--	--	--	--	--
4772	201	0.1	--	--	--	--	--	--
4773	201	0.2	--	--	--	--	--	--
4774	201	0.1	--	--	--	--	--	--
4775	201	0.1	--	--	--	--	--	--
4776	201	0.1	--	--	--	--	--	--
4777	201	0.2	--	--	--	--	--	--
4778	201	0.1	--	--	--	--	--	--
4779	201	0.3	--	--	--	--	--	--
4780	201	0.6	--	--	--	--	--	--
4781	201	0.1	--	--	--	--	--	--
4782	201	0.2	--	--	--	--	--	--
4783	201	0.2	--	--	--	--	--	--
4784	201	0.2	--	--	--	--	--	--
4785	201	0.1	--	--	--	--	--	--
4786	201	0.1	--	--	--	--	--	--
4787	201	0.2	--	--	--	--	--	--
4788	201	0.2	--	--	--	--	--	--
4789	201	0.3	--	--	--	--	--	--
4790	201	0.2	--	--	--	--	--	--
4791	201	0.2	--	--	--	--	--	--
4792	201	0.2	--	--	--	--	--	--
4793	201	0.1	--	--	--	--	--	--
4794	201	0.4	--	--	--	--	--	--
4795	201	0.1	--	--	--	--	--	--
4796	201	0.2	--	--	--	--	--	--
4797	201	0.2	--	--	--	--	--	--
4798	201	0.2	--	--	--	--	--	--
4799	201	0.1	--	--	--	--	--	--
4800	201	0.2	--	--	--	--	--	--

Certified by *Hart Buchler*





Chemex Labs Ltd.

Analytical Chemists • Geochemists • Registered Assayers

212 Brooksbank Ave.
North Vancouver, B.C.
Canada V7J 2C1

Telephone: (604) 984-0221
Telex: 043-52597

CERTIFICATE OF ANALYSIS

TO : MOND GOLD MINES INC.
C/O BEAVON CONSULTING LTD.
8720 MILLMORE RD.
RICHMOND, B.C.
V7C 1S9

CERT. # : A8518764-003-A
INVOICE # : I8518764
DATE : 11-DEC-85
P.O. # :
MADOC

CC: BEAVON CONSULTING, MADOC, UNT.

Sample description	Prep code	Bi ppm						
4801	201	0.1	--	--	--	--	--	--
4802	201	0.1	--	--	--	--	--	--
4803	201	0.2	--	--	--	--	--	--
4804	201	0.1	--	--	--	--	--	--
4805	201	0.1	--	--	--	--	--	--
4806	201	0.1	--	--	--	--	--	--
4807	201	0.1	--	--	--	--	--	--
4808	201	0.2	--	--	--	--	--	--
4809	201	0.3	--	--	--	--	--	--
4810	201	0.1	--	--	--	--	--	--
4811	201	0.1	--	--	--	--	--	--
4812	201	0.2	--	--	--	--	--	--
4813	201	0.1	--	--	--	--	--	--
4814	201	0.1	--	--	--	--	--	--
4815	201	0.1	--	--	--	--	--	--
4816	201	1.0	--	--	--	--	--	--
4817	201	0.5	--	--	--	--	--	--
4818	201	0.1	--	--	--	--	--	--
4819	201	0.1	--	--	--	--	--	--
4820	201	0.1	--	--	--	--	--	--
4821	201	0.1	--	--	--	--	--	--
4822	201	0.1	--	--	--	--	--	--
4823	201	0.1	--	--	--	--	--	--
4824	201	0.1	--	--	--	--	--	--
4825	201	0.1	--	--	--	--	--	--
4826	201	0.1	--	--	--	--	--	--
4827	201	0.1	--	--	--	--	--	--
4828	201	0.1	--	--	--	--	--	--
4829	201	0.1	--	--	--	--	--	--
4830	201	0.2	--	--	--	--	--	--
4831	201	0.5	--	--	--	--	--	--
4832	201	0.1	--	--	--	--	--	--
4833	201	0.3	--	--	--	--	--	--
4834	201	0.2	--	--	--	--	--	--
4835	201	0.1	--	--	--	--	--	--
4836	201	0.1	--	--	--	--	--	--
4837	201	0.1	--	--	--	--	--	--
4838	201	0.2	--	--	--	--	--	--
4839	201	0.1	--	--	--	--	--	--
4840	201	0.1	--	--	--	--	--	--

Certified by *Hart Bichler*.....





Chemex Labs Ltd.

Analytical Chemists • Geochemists • Registered Assayers

212 Brooksbank Ave.
North Vancouver, B.C.
Canada V7J 2C1
Telephone: (604) 984-0221
Telex: 043-52597

CERTIFICATE OF ANALYSTS

TO : MOND GOLD MINES INC.
C/O BEAVON CONSULTING LTD.
8720 MILLMORE RD.
RICHMOND, B.C.
V7C 1S9

CERT. # : A8518764-004-A
INVOICE # : I8518764
DATE : 11-DEC-85
P.O. # :
MADOC

CC: BEAVON CONSULTING, MADOC, ONT.

Sample description	Prep code	Bi ppm					
4841	201	0.2	--	--	--	--	--
4842	201	0.1	--	--	--	--	--
4843	201	0.2	--	--	--	--	--
4844	201	0.2	--	--	--	--	--
4845	201	0.1	--	--	--	--	--
4846	201	0.1	--	--	--	--	--
4847	201	0.1	--	--	--	--	--
4848	201	0.1	--	--	--	--	--
4849	201	0.1	--	--	--	--	--
4850	201	0.1	--	--	--	--	--
4851	201	0.2	--	--	--	--	--
4852	201	0.1	--	--	--	--	--
4853	201	0.1	--	--	--	--	--
4854	201	0.1	--	--	--	--	--
4855	201	0.1	--	--	--	--	--
4856	201	0.1	--	--	--	--	--
4857	201	0.3	--	--	--	--	--
4858	201	0.2	--	--	--	--	--
4859	201	0.2	--	--	--	--	--
4860	201	0.1	--	--	--	--	--
4861	201	0.1	--	--	--	--	--
4862	201	0.2	--	--	--	--	--
4863	201	0.1	--	--	--	--	--
4864	201	0.1	--	--	--	--	--
4865	201	0.2	--	--	--	--	--
4866	201	0.1	--	--	--	--	--
4867	201	0.1	--	--	--	--	--
4868	201	0.1	--	--	--	--	--
4869	201	0.1	--	--	--	--	--
4870	201	0.1	--	--	--	--	--
4871	201	0.1	--	--	--	--	--
4872	201	0.1	--	--	--	--	--
4873	201	0.1	--	--	--	--	--
4874	201	0.1	--	--	--	--	--
4875	201	0.1	--	--	--	--	--
4876	201	0.1	--	--	--	--	--
4877	201	0.1	--	--	--	--	--
4878	201	0.1	--	--	--	--	--
4879	201	0.1	--	--	--	--	--
4880	201	0.2	--	--	--	--	--

Certified by Hart Bichler.....





Chemex Labs Ltd.

Analytical Chemists • Geochemists • Registered Assayers

212 Brooksbank Ave.
North Vancouver, B.C.
Canada V7J 2C1

Telephone: (604) 984-0221
Telex: 043-52597

CERTIFICATE OF ANALYSIS

TO : MOND GOLD MINES INC.
C/O BEAVON CONSULTING LTD.
8720 MILLMORE RD.
RICHMOND, B.C.
V7C 1S9

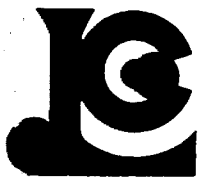
CERT. # : A8518764-005-A
INVOICE # : I8518764
DATE : 11-DEC-85
P.O. # :
MADOC

CC: BEAVON CONSULTING, MADOC, ONT.

Sample description	Prep code	Bi ppm						
4881	201	0.1	--	--	--	--	--	--
4882	201	0.1	--	--	--	--	--	--
4883	201	0.1	--	--	--	--	--	--
4884	201	0.1	--	--	--	--	--	--
4885	201	0.1	--	--	--	--	--	--
4886	201	0.1	--	--	--	--	--	--
4887	201	0.1	--	--	--	--	--	--
4888	201	0.1	--	--	--	--	--	--
4889	201	0.1	--	--	--	--	--	--
4890	201	0.4	--	--	--	--	--	--
4891	201	0.2	--	--	--	--	--	--
4892	201	0.1	--	--	--	--	--	--
4893	201	0.1	--	--	--	--	--	--
4894	201	0.1	--	--	--	--	--	--
4895	201	0.1	--	--	--	--	--	--
4896	201	0.1	--	--	--	--	--	--
4897	201	0.1	--	--	--	--	--	--
4898	201	0.1	--	--	--	--	--	--
4899	201	0.1	--	--	--	--	--	--
4900	201	0.1	--	--	--	--	--	--
4901	201	0.1	--	--	--	--	--	--
4902	201	0.1	--	--	--	--	--	--
4903	201	0.1	--	--	--	--	--	--
4904	201	0.1	--	--	--	--	--	--
4905	201	0.1	--	--	--	--	--	--
4906	201	0.1	--	--	--	--	--	--
4907	201	0.1	--	--	--	--	--	--
4908	201	0.1	--	--	--	--	--	--
4909	201	0.1	--	--	--	--	--	--
4910	201	0.3	--	--	--	--	--	--
4911	201	0.1	--	--	--	--	--	--
4912	201	0.1	--	--	--	--	--	--
4913	201	0.1	--	--	--	--	--	--
4914	201	0.2	--	--	--	--	--	--
4915	201	0.1	--	--	--	--	--	--
4916	201	0.1	--	--	--	--	--	--
4917	201	0.1	--	--	--	--	--	--
4918	201	0.1	--	--	--	--	--	--
4919	201	0.1	--	--	--	--	--	--
4920	201	0.1	--	--	--	--	--	--

Certified by *Hart Buchler*





Chemex Labs Ltd.

Analytical Chemists • Geochemists • Registered Assayers

212 Brooksbank Ave.
North Vancouver, B.C.
Canada V7J 2C1

Telephone: (604) 984-0221
Telex: 043-52597

CERTIFICATE OF ANALYSIS

TO : MOND GOLD MINES INC.
C/O BEAVON CONSULTING LTD.
8720 MILLMORE RD.
RICHMOND, B.C.
V7C 1S9

CERT. # : A8518764-006-A
INVOICE # : I8518764
DATE : 11-DEC-85
P.O. # :
MADOC

CC: BEAVON CONSULTING, MADOC, UNT.

Sample description	Prep code	Bi ppm						
4921	201	0.1	--	--	--	--	--	--
4922	201	0.1	--	--	--	--	--	--
4923	201	0.1	--	--	--	--	--	--
4924	201	0.1	--	--	--	--	--	--
4925	201	0.1	--	--	--	--	--	--
4926	201	0.1	--	--	--	--	--	--
4927	201	0.1	--	--	--	--	--	--
4928	201	0.1	--	--	--	--	--	--
4929	201	0.4	--	--	--	--	--	--
4930	201	0.2	--	--	--	--	--	--
4931	201	0.1	--	--	--	--	--	--
4932	201	0.1	--	--	--	--	--	--
4933	201	0.2	--	--	--	--	--	--
4934	201	0.1	--	--	--	--	--	--
4935	201	0.1	--	--	--	--	--	--
4936	201	0.1	--	--	--	--	--	--
4937	201	0.1	--	--	--	--	--	--
4938	201	0.1	--	--	--	--	--	--
4939	201	0.1	--	--	--	--	--	--
4940	201	0.1	--	--	--	--	--	--
4941	201	0.2	--	--	--	--	--	--
4942	201	0.1	--	--	--	--	--	--
4943	201	0.2	--	--	--	--	--	--
4944	201	0.3	--	--	--	--	--	--
4945	201	0.2	--	--	--	--	--	--
4946	201	0.1	--	--	--	--	--	--
4947	201	0.1	--	--	--	--	--	--
4948	201	0.2	--	--	--	--	--	--
4949	201	0.1	--	--	--	--	--	--
4950	201	0.2	--	--	--	--	--	--
4951	201	0.1	--	--	--	--	--	--
4952	201	0.3	--	--	--	--	--	--
4953	201	0.2	--	--	--	--	--	--
4954	201	0.1	--	--	--	--	--	--
4955	201	1.1	--	--	--	--	--	--
4956	201	1.2	--	--	--	--	--	--
4957	201	0.2	--	--	--	--	--	--

Certified by Hart Buchler





TO BE ATTACHED AS AN APPENDIX TO TECHNICAL REPORT
FACTS SHOWN HERE NEED NOT BE REPEATED IN REPORT
TECHNICAL REPORT MUST CONTAIN INTERPRETATION, CONCLUSIONS ETC.

Type of Survey(s) GEOCHEMICAL
Township or Area MADOC TOWNSHIP
Claim Holder(s) MOND GOLD MINES INC.
Survey Company BEADON CONSULTING LTD.
Author of Report M. KENNETH KRYKLYWY
Address of Author 8 BRAMPTON RD., WESTON, ONT. M9R3J1
Covering Dates of Survey NOV. 1 - DEC. 19, 1985
Total Miles of Line Cut 7.1 MILES

MINING CLAIMS TRAVERSED
List numerically
Table with columns for prefix and number, containing entries: EO 572483, EO 740470, EO 740472, EO 592199. Total Claims 3.

SPECIAL PROVISIONS CREDITS REQUESTED
Table with columns for Geophysical, Geological, Geochemical and DAYS per claim. Values: 40 days for Geophysical and Geochemical.

AIRBORNE CREDITS (Special provision credits do not apply to airborne surveys)
Magnetometer _____ Electromagnetic _____ Radiometric _____
DATE: 23.12.85 SIGNATURE: K. Kryklywy

Res. Geol. _____ Qualifications 2.8920

Previous Surveys
Table with columns: File No., Type, Date, Claim Holder

OFFICE USE ONLY

If space insufficient, attach list

GEOPHYSICAL TECHNICAL DATA

GROUND SURVEYS – If more than one survey, specify data for each type of survey

Number of Stations _____ Number of Readings _____
Station interval _____ Line spacing _____
Profile scale _____
Contour interval _____

MAGNETIC

Instrument _____
Accuracy – Scale constant _____
Diurnal correction method _____
Base Station check-in interval (hours) _____
Base Station location and value _____

ELECTROMAGNETIC

Instrument _____
Coil configuration _____
Coil separation _____
Accuracy _____
Method: Fixed transmitter Shoot back In line Parallel line
Frequency _____
(specify V.L.F. station)
Parameters measured _____

GRAVITY

Instrument _____
Scale constant _____
Corrections made _____

Base station value and location _____

Elevation accuracy _____

INDUCED POLARIZATION RESISTIVITY

Instrument _____
Method Time Domain Frequency Domain
Parameters – On time _____ Frequency _____
– Off time _____ Range _____
– Delay time _____
– Integration time _____
Power _____
Electrode array _____
Electrode spacing _____
Type of electrode _____

SELF POTENTIAL.

Instrument _____ Range _____

Survey Method _____

Corrections made _____

RADIOMETRIC

Instrument _____

Values measured _____

Energy windows (levels) _____

Height of instrument _____ Background Count _____

Size of detector _____

Overburden _____
(type, depth – include outcrop map)

OTHERS (SEISMIC, DRILL WELL LOGGING ETC.)

Type of survey _____

Instrument _____

Accuracy _____

Parameters measured _____

Additional information (for understanding results) _____

AIRBORNE SURVEYS

Type of survey(s) _____

Instrument(s) _____
(specify for each type of survey)

Accuracy _____
(specify for each type of survey)

Aircraft used _____

Sensor altitude _____

Navigation and flight path recovery method _____

Aircraft altitude _____ Line Spacing _____

Miles flown over total area _____ Over claims only _____

GEOCHEMICAL SURVEY - PROCEDURE RECORD

Numbers of claims from which samples taken 2

Total Number of Samples 401

Type of Sample SOIL
(Nature of Material)

Average Sample Weight 0.25 LBS.

Method of Collection SOIL AUGER

Soil Horizon Sampled B-HORIZON

Horizon Development A-B-C

Sample Depth 16 INCHES

Terrain ROLLING TO SWAMPY

Drainage Development POOR TO MODERATE

Estimated Range of Overburden Thickness 0-30 FEET

SAMPLE PREPARATION

(Includes drying, screening, crushing, ashing)

Mesh size of fraction used for analysis _____

-80 MESH

General _____

DRY, SEIVE TO -80 MESH

ANALYTICAL METHODS

Values expressed in: per cent
p. p. m.
p. p. b.

Cu, Pb, Zn, Ni, Co, Ag, Mo, As, -(circle)

Others Bi

Field Analysis (_____ tests)

Extraction Method _____

Analytical Method _____

Reagents Used _____

Field Laboratory Analysis _____

No. (_____ tests)

Extraction Method _____

Analytical Method _____

Reagents Used _____

Commercial Laboratory (401 tests)

Name of Laboratory CHEMEX LABS

Extraction Method TOPO-MIBK

Analytical Method AA

Reagents Used _____

General _____

DIGEST 2 GRAM SAMPLE IN HCL
AND KClO₃; TOPO-MIBK
EXTRACTION; ANALYZE WITH AA

Mining Lands Section

File No 2.9048

Control Sheet

TYPE OF SURVEY _____ GEOMYS. 277

_____ GEOLOGICAL

GEOCHEMICAL

EXPENDITURE

MINING LANDS COMMENTS:

L.D

lpl

J. Hurst
Signature of Assessor

April 23/86
Date

May 22, 1986

Your File: 86-34
Our File: 2.9048

Mining Recorder
Ministry of Northern Development and Mines
Whitney Block, Room 2548
99 Wellesley Street West
Queen's Park
Toronto, Ontario
M7A 1W3

Dear Madam:

RE: Notice of Intent dated April 30, 1986
Geochemical Survey and Data for Assaying
on Mining Claims EO 572483, et al, in
Madoc Township

The assessment work credits, as listed with the
above-mentioned Notice of Intent, have been approved
as of the above date.

Please inform the recorded holder of these mining
claims and so indicate on your records.

Yours sincerely,

J.C. Smith, Supervisor
Mining Lands Section

Whitney Block, 6th Floor
Queen's Park
Toronto, Ontario
M7A 1W3

Telephone: (416) 965-4888

SH/mc

cc: Mono Gold Mines Inc
Suite 709
837 West Hastings Street
Vancouver, B.C.
V6C 1B6

Resident Geologist
Tweed, Ontario

Encl.

M. Kenneth Kryklywy
8 Brampton Road
Weston, Ontario
M9R 3J1

Mr. G.H. Ferguson
Mining & Lands Commissioner
Toronto, Ontario



Recorded Holder
MONO GOLD MINES INC

Township or Area
MADOC TOWNSHIP

Type of survey and number of Assessment days credit per claim	Mining Claims Assessed
Geophysical Electromagnetic _____ days Magnetometer _____ days Radiometric _____ days Induced polarization _____ days Other _____ days Section 77 (19) See "Mining Claims Assessed" column Geological _____ days Geochemical <u>40</u> days Man days <input type="checkbox"/> Airborne <input type="checkbox"/> Special provision <input checked="" type="checkbox"/> Ground <input checked="" type="checkbox"/> <input type="checkbox"/> Credits have been reduced because of partial coverage of claims. <input type="checkbox"/> Credits have been reduced because of corrections to work dates and figures of applicant.	EO 572483 740470 592199

Special credits under section 77 (16) for the following mining claims

[Empty box for special credits]

No credits have been allowed for the following mining claims

not sufficiently covered by the survey insufficient technical data filed

EO 740472

The Mining Recorder may reduce the above credits if necessary in order that the total number of approved assessment days recorded on each claim does not exceed the maximum allowed as follows: Geophysical - 80; Geological - 40; Geochemical - 40; Section 77(19) - 60.



Recorded Holder
MONO GOLD MINES INC

Township or Area
MADOC TOWNSHIP

Type of survey and number of Assessment days credit per claim	Mining Claims Assessed
<p>Geophysical</p> <p>Electromagnetic _____ days</p> <p>Magnetometer _____ days</p> <p>Radiometric _____ days</p> <p>Induced polarization _____ days</p> <p>Other _____ days</p>	<p>\$1784.45 SPENT ON ASSAYING SAMPLES TAKEN FROM MINING CLAIMS:</p> <p>EO 572483 740470 592199</p>
<p>Section 77 (19) See "Mining Claims Assessed" column</p>	
<p>Geological _____ days</p>	
<p>Geochemical _____ days</p>	
<p>Man days <input type="checkbox"/> Airborne <input type="checkbox"/></p> <p>Special provision <input type="checkbox"/> Ground <input type="checkbox"/></p> <p><input type="checkbox"/> Credits have been reduced because of partial coverage of claims.</p> <p><input type="checkbox"/> Credits have been reduced because of corrections to work dates and figures of applicant.</p>	

118 DAYS CREDIT ALLOWED WHICH MAY BE GROUPED IN ACCORDANCE WITH SECTION 76(6) OF THE MINING ACT R.S.O. 1980.

Special credits under section 77 (16) for the following mining claims

No credits have been allowed for the following mining claims

not sufficiently covered by the survey insufficient technical data filed

The Mining Recorder may reduce the above credits if necessary in order that the total number of approved assessment days recorded on each claim does not exceed the maximum allowed as follows: Geophysical - 80; Geological - 40; Geochemical - 40; Section 77(19) - 60.



Ontario

May 15/86

Ministry of
Northern Development
and Mines

April 30, 1986

Your File: 86-34
Our File: 2.9048

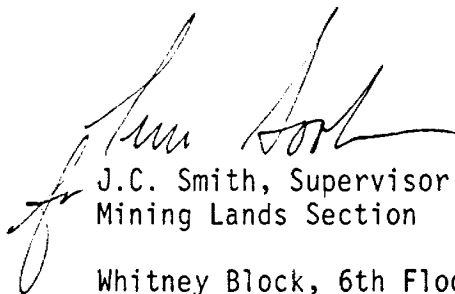
Mining Recorder
Ministry of Northern Affairs and Mines
Whitney Block, Room 2548
99 Wellesley Street West
Queen's Park
Toronto, Ontario
M7A 1W3

Dear Madam:

Enclosed are two copies of a Notice of Intent with statements listing a reduced rate of assessment work credits to be allowed for a technical survey. Please forward one copy to the recorded holder of the claims and retain the other. In approximately fifteen days from the above date, a final letter of approval of these credits will be sent to you. On receipt of the approval letter, you may then change the work entries on the claim record sheets.

For further information, if required, please contact Mr. R.J. Pichette at (416) 965-4888.

Yours sincerely,



J.C. Smith, Supervisor
Mining Lands Section

Whitney Block, 6th Floor
Queen's Park
Toronto, Ontario
M7A 1W3

R.D. SH/mc

Encl.

cc: Mono Gold Mines Inc
Suite 709
837 West Hastings Street
Vancouver, B.C.
V6C 1B6

M. Kenneth Kryklywy
8 Brampton Road
Weston, Ontario
M9R 3J1

Mr. G.H. Ferguson
Mining & Lands Commissioner
Toronto, Ontario



Ministry of
Northern Development
and Mines

Notice of Intent
for Technical Reports

April 30, 1986

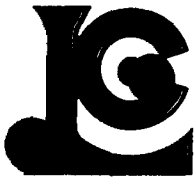
2.9048/86-34

An examination of your survey report indicates that the requirements of The Ontario Mining Act have not been fully met to warrant maximum assessment work credits. This notice is merely a warning that you will not be allowed the number of assessment work days credits that you expected and also that in approximately 15 days from the above date, the mining recorder will be authorized to change the entries on the record sheets to agree with the enclosed statement. Please note that until such time as the recorder actually changes the entry on the record sheet, the status of the claim remains unchanged.

If you are of the opinion that these changes by the mining recorder will jeopardize your claims, you may during the next fifteen days apply to the Mining and Lands Commissioner for an extension of time. Abstracts should be sent with your application.

If the reduced rate of credits does not jeopardize the status of the claims then you need not seek relief from the Mining and Lands Commissioner and this Notice of Intent may be disregarded.

If your survey was submitted and assessed under the "Special Provision-Performance and Coverage" method and you are of the opinion that a re-appraisal under the "Man-days" method would result in the approval of a greater number of days credit per claim, you may, within the said fifteen day period, submit assessment work breakdowns listing the employees names, addresses and the dates and hours they worked. The new work breakdowns should be submitted directly to the Land Management Branch, Toronto. The report will be re-assessed and a new statement of credits based on actual days worked will be issued.



Chemex Labs Ltd.

Analytical Chemists • Geochemists • Registered Assayers

212 Brooksbank Ave.
North Vancouver, B.C.
Canada V7J 2C1
Telephone: (604) 984-0221
Telex: 043-52597

*** INVOICE ***

To : MOND GOLD MINES INC.
C/O BEAVON CONSULTING LTD.
8720 MILLMORE RD.
RICHMOND, B.C.
V7C 1S9

** Invoice # : 18518074
Date : 8-NOV-85
P.O. # :
Project MADOC

Invoice for analytical work reported on certificate(s) A8518074-001 to -006

Quantity	Analysed for code description	unit price	amount
240	023 - Bi ppm	3.75	900.00
Sample preparation and other charges :			
240	201 - Soil + sediment -80 mesh	0.70	168.00

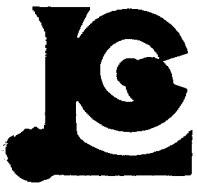
TOTAL \$ 1068.00

Please pay this amount ----> \$ 1068.00
=====

TERMS -- NET 30 DAYS

1.5 % per month (18 % per annum) charged on overdue accounts





Chemex Labs Ltd.

Analytical Chemists • Geochemists • Registered Assayers

212 Brooksbank Ave.
North Vancouver, B.C.
Canada V7J 2C1
Telephone: (604) 984-0221
Telex: 043-52597

*** INVOICE ***

To : MOND GOLD MINES INC.
C/O BEAVON CONSULTING LTD.
8720 MILLMORE RD.
RICHMOND, B.C.
V7C 1S9

** Invoice # : 18518076
Date : 8-NOV-85
P.O. # :
Project MADOC

Invoice for analytical work reported on certificate(s) A8518076-001 to -005

Quantity	Analysed for code description	unit price	amount
163	023 - Bi ppm	3.75	611.25

Sample preparation and other charges :

163	201 - Soil + sediment -80 mesh	0.70	114.10
-----	--------------------------------	------	--------

TOTAL \$ 725.35

Please pay this amount ----> \$ 725.35
=====

TERMS -- NET 30 DAYS

1.5 % per month (18 % per annum) charged on overdue accounts





Chemex Labs Ltd.

Analytical Chemists • Geochemists • Registered Assayers

212 Brooksbank Ave.
North Vancouver, B.C.
Canada V7J 2C1
Telephone: (604) 984-0221
Telex: 043-52597

*** INVOICE ***

To : MOND GOLD MINES INC.
C/O BEAVON CONSULTING LTD.
8720 MILLMORE RD.
RICHMOND, B.C.
V7C 1S9

Invoice # : 18518764 ✓
Date : 11-DEC-85
P.O. # :
Project MADOC

Invoice for analytical work reported on certificate(s) A8518764-001 to -006

Quantity	Analysed for code description	unit price	amount
237	023 - Bi ppm	3.75	888.75

Sample preparation and other charges :

237	201 - Soil + sediment -80 mesh	0.70	165.90
-----	--------------------------------	------	--------

TOTAL \$ 1054.65

Please pay this amount ----> \$ 1054.65
=====

TERMS -- NET 30 DAYS
1.5 % per month (18 % per annum) charged on overdue accounts

Dec 16 1985

Dec. 17/85

Chemex Labs Ltd.

212 Brooksbank
North Vancouver,
Canada V7

Phone: (604) 984

Telex: 043

Analytical Chemists • Geochemists • Registered Assayers

*** INVOICE ***

To : MOND GOLD MINES INC.
C/O BEAVON CONSULTING LTD.
8720 MILLMORE RD.
RICHMOND, B.C.
V7C 1S9

Invoice # : 18518641

Date : 6-DEC-85

P.O. # :

Project MADOC

Invoice for analytical work reported on certificate(s) A8518641-001 to -009

Quantity	Analysed for code description	unit	price	amount
302	023 - Bi	ppm	3.75	1132.50
21	023 - Bi	ppm		
	024 - Te	ppm	9.25	194.25

Sample preparation and other charges :

323	201 - Soil + sediment -80 mesh		0.70	226.10
-----	--------------------------------	--	------	--------

TOTAL \$ 1552.85

Please pay this amount ----> \$ 1552.85

TERMS -- NET 30 DAYS

1.5 % per month (18 % per annum) charged on overdue accounts

approved by
RW Sean
Dec 11 '85

Maitland & Company
Barristers and Solicitors

FACSIMILE 10041 681 3107
TELEPHONE 10041 681 7474
TELEX 04-54262
AURORA PAC 1CR

ROBERT R MAITLAND (1976)

ROSS C MCGUTCHEON

MICHAEL L SEIFERT

CHRISTOPHER C BIRD

THOMAS M LEWIN

BRIAN A MASON

RONALD O FLASSEN

WM ARTHUR LUNEY

700 STANDARD LIFE BLDG

625 HOWE STREET

P O BOX 54

VANCOUVER, B. C.

CANADA V6C 2T6

PLEASE REFER TO OUR

December 11, 1985

Chemex Labs Ltd.
212 Brooksbank Avenue
North Vancouver, B.C.
V7J 2C1

Dear Sirs:

Re: Mono Gold Mines Inc.

Pursuant to the request of our client, Mono Gold Mines Inc., we enclose herewith our trust cheque of even-date for \$8,551.15 which is in payment of the following invoices:

- (a) I8517824 for \$1,401.75;
- (b) I8518076 for \$725.35;
- (c) I8518072 for \$512.50;
- (d) I8518303 for \$60.50;
- (e) I8518224 for \$275.00;
- (f) I8518370 for \$1,068.00;
- (g) I8518437 for \$379.50;
- (h) I8518408 for \$1,842.05;
- (i) I8518438 for \$764.50;
- (j) I8518440 for \$454.00; and
- (k) I8518074 for \$1,068.00.

For your convenience, we have enclosed copies of the aforementioned invoices.

Yours truly

MAITLAND & COMPANY

Per:

Wm. Arthur Luney

WAL/law
Enclosures

Maitland & Company

Brokers and Solicitors

901 - 470 Granville Street
Vancouver, B.C. V6C 1V6

T 5187

PAY *Eight thousand five hundred and fifty-one* _____ ¹⁵/_{XX} DOLLAR

DATE	TO THE ORDER OF	RE:
<i>Dec 11 85</i>	<i>Chemex Auto Stcl.</i>	<i>Mono 85098-2</i>

CHEQUE AMOUNT
<i>855115</i>

MAITLAND & COMPANY

TRUST ACCOUNT

PER *Lynne Hanson*
PER *[Signature]*

THE ROYAL BANK OF CANADA, Hastings & Granville
685 W. Hastings St., Vancouver, B.C.

⑈005187⑈ ⑆06550⑈003⑆ 115⑈130⑈7⑈



Chemex Labs Ltd.

Analytical Chemists • Geochemists • Registered Assayers

212 Brooksbank Avenue
North Vancouver, B.C.
Canada V7J 2C1
Phone (604) 984-0221
Telex 043-52597



MONO GOLD MINES INC.
C/O BEAVON CONSULTING LTD.
8720 MILLMORE RD.
RICHMOND, B.C.
V7C 1S9

DAY	MO.	YR.
31	DEC	85
CODE	PAGE	
CVG	1	

MAKE CHECK
Chemex Labs
212 Brooksbank
North Vancouver,
Canada,

STATEMENT OF ACCOUNT

DAY	MO.	YR.	TRANSACTION	INVOICE NUMBER	DEBIT	CREDIT	BALANCE
01	DEC	85	BALANCE FWRD				8901.97
02	DEC	85	INVOICE	18518477	1593.00		10494.97
02	DEC	85	INVOICE	18518566	38.50		10533.47
05	DEC	85	INVOICE	18518676	814.00		11347.47
05	DEC	85	INVOICE	18518709	703.50		12050.97
06	DEC	85	INVOICE	18518734	938.00		12988.97
06	DEC	85	INVOICE	18518641	1552.85		14541.82
06	DEC	85	INVOICE	18518639	252.00		14793.82
09	DEC	85	INVOICE	18518758	418.75		15212.57
09	DEC	85	INVOICE	18518790	519.25		15731.82
10	DEC	85	INVOICE	18581455	9.35		15741.17
10	DEC	85	INVOICE	18518735	78.75		15819.92
10	DEC	85	INVOICE	18518828	132.00		15951.92
11	DEC	85	INVOICE	18518764	1054.65		17006.57
12	DEC	85	INVOICE	18581473	46.75		17053.32
13	DEC	85	INVOICE	18518761	1292.80		18346.12
16	DEC	85	INVOICE	18518888	132.00		18478.12
16	DEC	85	INVOICE	18518971	720.25		19198.37
20	DEC	85	INVOICE	18519076	256.25		19454.62
29	DEC	85	PAYMENT			46.75	19407.87
29	DEC	85	PAYMENT			8551.15	10856.72
31	DEC	85	INTEREST	18670126	.18		10856.90
PAYMENTS RECEIVED AFTER DEC.31 WILL APPEAR ON NEXT STATEMENT							
CURRENT		31-60 DAYS		61-90 DAYS		OVER 90 DAYS	
10506.08		338.82		12.00		.00	
BALANCE DUE						\$10856.90	

CHECK

DAY	MO.
01	DEC
02	DEC
02	DEC
02	DEC
05	DEC
05	DEC
05	DEC
06	DEC
06	DEC
06	DEC
06	DEC
09	DEC
09	DEC
09	DEC
10	DEC
10	DEC
10	DEC
10	DEC
11	DEC
11	DEC
12	DEC
12	DEC
13	DEC
13	DEC
16	DEC
16	DEC
16	DEC
20	DEC
31	DEC

BALANCE

TERMS
1.5

18.0

Approved by

PL

Maitland & Company
Barristers and Solicitors

COPY

TELEPHONE (604) 681-7474
FACSIMILE (604) 681-2896
TELEX: 04-54262
AURORA PAC VCR

ROBERT R. MAITLAND (1978)

ROSS C. McCUTCHEON
MICHAEL L. SEIFERT
GORDON C. BIRD
EDWARD M. LEWIN

BRIAN A. MASON
RONALD O. KLASSEN
WM. ARTHUR LUNEY

700 STANDARD LIFE BLDG.

625 HOWE STREET
P.O. BOX 54

VANCOUVER, B. C.

CANADA V6C 2T6

PLEASE REFER TO OUR

FILE _____

January 21, 1986

Chemex Labs Ltd.
212 Brooksbank Avenue
North Vancouver, B.C.
V7J 2C1

Dear Sirs:

Re: Mono Gold Mines Inc.

Pursuant to the request of our client, Mono Gold Mines Inc., we enclose herewith our trust cheque of even-date for \$10,856.90 in payment of your Statement to the Company dated December 31, 1985.

Yours truly

MAITLAND & COMPANY

Per:

Wm. Arthur Luney

WAL/law
Enclosure

Maitland & Company

Barristers and Solicitors
P.O. BOX 54
700 - 625 HOWE STREET
VANCOUVER, B.C. V6C 2T6

T 5399

PAY Ten thousand Eight hundred and Fifty-six 90 DOLLAR XX

DATE	TO THE ORDER OF	RE:
	Jan 21/86 Chemex Labs Ltd.	Mono 85098-2

CHEQUE AMOUNT	
10	856.90

TRUST ACCOUNT

MAITLAND & COMPANY

PER [Signature]
PER _____

THE ROYAL BANK OF CANADA, Hastings & Granville
685 W. Hastings St., Vancouver, B.C.

⑈005399⑈ ⑆06550⑈003⑆ 115⑈130⑈7⑈

766814 . ✓

15 . ✓

16 . ✓

17 . ✓

18 . ✓

19 . ✓

20 .

21 .

22 .

23 ✓

768307 . ✓

5 . ✓

6 . ✓

768313 . ✓

14 . ✓

15 . ✓

768324 . ✓

25 . ✓

26 . ✓

Tudor Twp. (M.156)

Grimsthorpe Twp. (M.97)

THE TOWNSHIP
OF

MADOC

COUNTY OF
HASTINGS

EASTERN ONTARIO
MINING DIVISION

SCALE: 1-INCH = 40 CHAINS

DISPOSITION OF CROWN LANDS

- PATENT SURFACE AND MINING RIGHTS
- SURFACE RIGHTS ONLY
- MINING RIGHTS ONLY
- LEASE SURFACE AND MINING RIGHTS
- SURFACE RIGHTS ONLY
- MINING RIGHTS ONLY
- LICENCE OF OCCUPATION
- ROADS
- IMPROVED ROADS
- KINGS HIGHWAYS
- RAILWAYS
- POWER LINES
- MARSH & MUSKOG
- MINES

NOTES

This Map is Not To Be Used
FOR SURVEY PURPOSES

400' SURFACE RIGHTS RESERVATION ALONG
THE SHORES OF ALL LAKES AND RIVERS

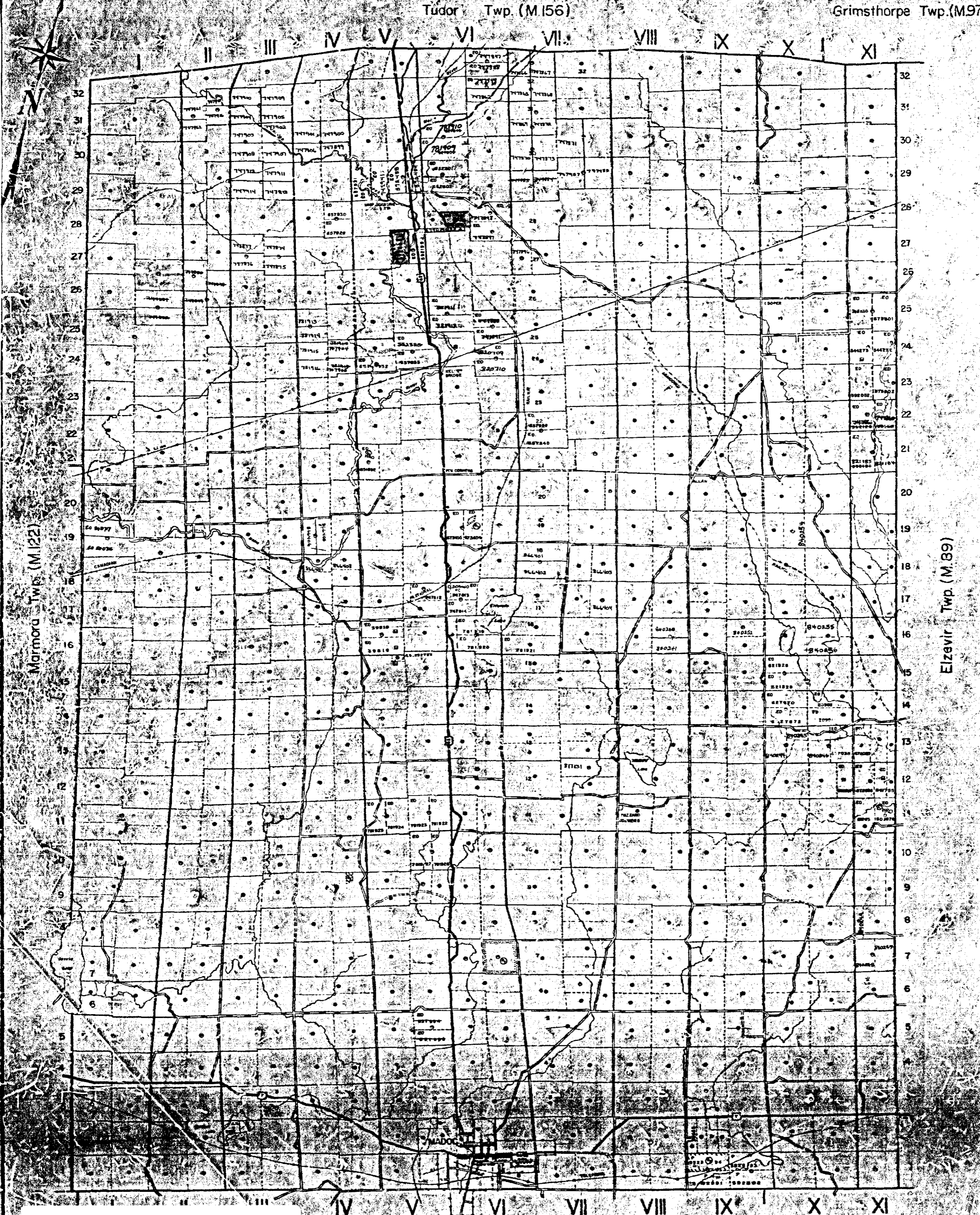
Areas withdrawn from Mining under Section
45 of the Mining Act (R.S.O. 1920)

Order No. 136 Date Disposition

W2/76 56373 Jan 16 '76 M.R.

SAND & GRAVEL

- Gravel, File 747442
- Marble, File 141974
- Quarry - File



Marmora Twp. (M.122)

Elzevir Twp. (M.89)

Huntingdon Twp. (M.106)

Hungerford Twp. (M.105)

PLAN NO. M.120

ONTARIO
MINISTRY OF NATURAL RESOURCES
SURVEYS AND MAPPING BRANCH



31C12NE0043 2.9048 MADOC



29048

- 0.1 BISMUTH ppm
- NS NO SAMPLE
- CLAIM BOUNDARY
- SWAMP
- BUSH ROAD



K. Kryklywy

MONO GOLD MINES INC.

BANNOCKBURN PROPERTY

MADOC TOWNSHIP, HASTINGS COUNTY, EASTERN ONT. MD.

CLAIMS E0572483, E0592199
E0740470 & E0740472

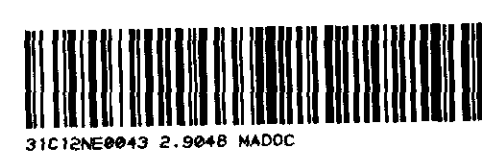
E Lot 27 Conc V, Part Lot 27 and Part Lot 28 Conc VI

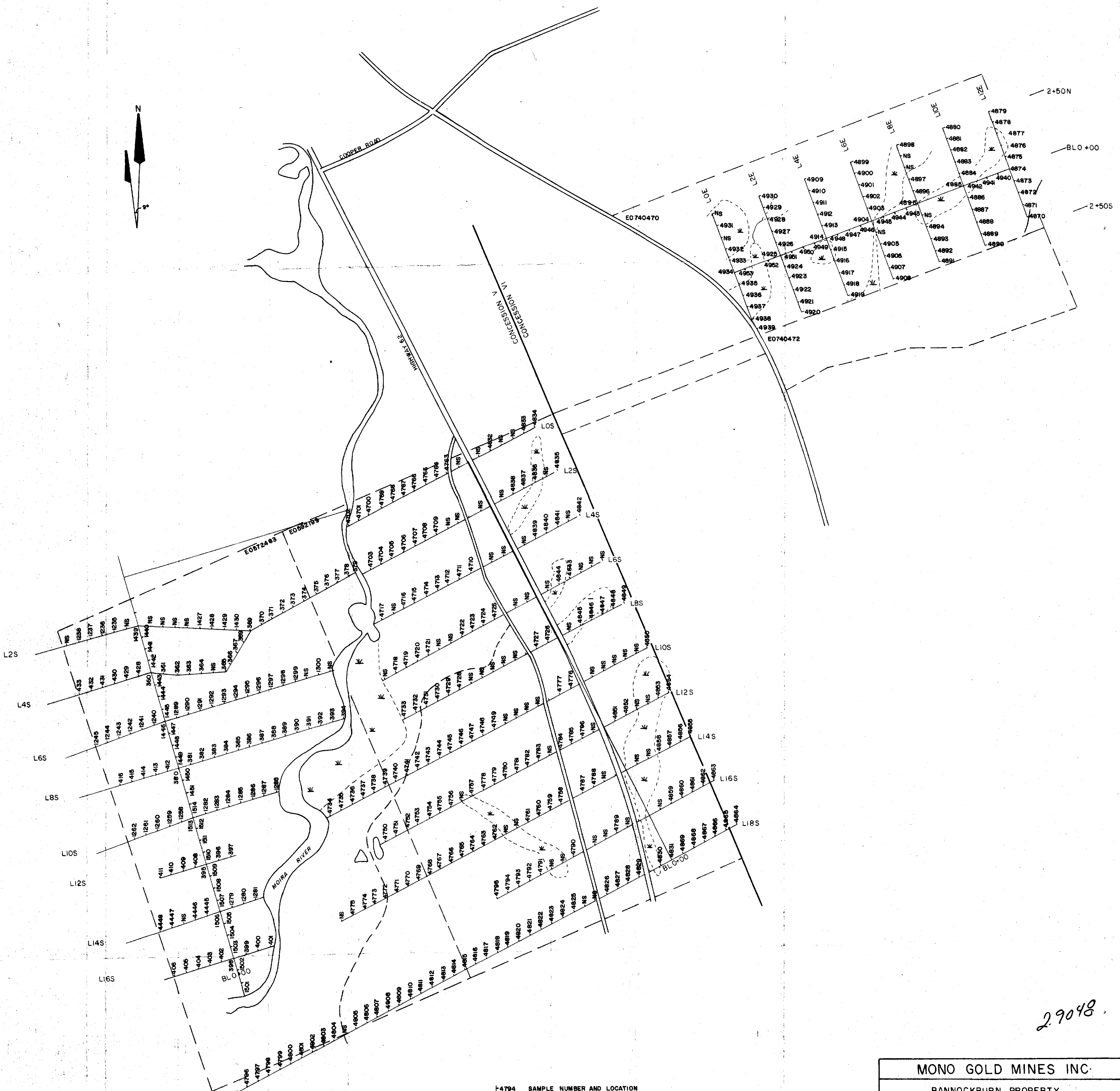
GEOCHEMICAL MAP

0 200 400 600 feet

BEAVON CONSULTING LIMITED
 SCALE: 1" = 200'
 DRAWN BY: KA: KRYKLYWY

DEC 1985
 FIGURE NO. 4





F4794 SAMPLE NUMBER AND LOCATION
 NS NO SAMPLE
 CLAIM BOUNDARY
 SWAMP
 BUSH ROAD



K.M. Kryklywy

29048

MONO GOLD MINES INC.
 BANNOCKBURN PROPERTY
 MADOC TOWNSHIP, HASTINGS COUNTY, EASTERN ONT. MD
 CLAIMS EO 572483, EO 592199
 EO 740470 & EO 740472
 E Lot 27 Conc V, Part Lot 27 and Part Lot 28 Conc VI

GEOCHEMICAL MAP

0 200 400 600 feet

BEAVON CONSULTING LIMITED
 SCALE 1" = 200'
 DRAWN BY: KA. KRYKLYWY

DEC 1985
 FIGURE NO. 3

