



31C12NE0050 32 MADOC

010

TOWNSHIP: Madoc

REPORT No.: 32

WORK PERFORMED BY: Mono Gold Mines Inc.

<u>CLAIM No.</u>	<u>HOLE No.</u>	<u>FOOTAGE</u>	<u>DATE</u>	<u>NOTE</u>
EO 572483	104.0	103.0	oct/81	(1)

NOTES: (1) #14-82

Diamond Drill Record

SAWYER CONSULTANTS INC.



COLLAR: 0-3 1/2 (=BL)		HOLE SURVEY		
0+00E		METHOD:		
ELEVATION		FOOTAGE	AZIMUTH	DIP
CORE SIZE BX		COLLAR	095° Mag	-45°
LOGGED BY J.B.P. Sawyer				
DATE LOGGED 5/12/81				
MAP REFERENCE No. 31C/12				

COMPANY NAME Mono Gold Mines Inc.
 PROPERTY NAME Bannockburn, Madoc Twp., Ontario
 DRILLING CONTRACTOR Eastern Ontario Diamond Drilling Ltd.
 ASSAYER Bondar-Clegg & Company Ltd., Ottawa, Ontario
 PURPOSE OF HOLE _____

HOLE No.	104 ²⁷
CLAIM NAME/No.	Lot 28, Concession 5.
COMMENCED	15/10/81 Madoc Twp.
FINISHED	20/10/81
FINAL DEPTH	100'
PROJECT No.	103

FROM	TO	RECOVY	DESCRIPTION	SAMPLE				ASSAYS					
				FROM	TO	WIDTH	No.						
0'	11'		Overburden. 11' of casing in hole.										
11'	24.5'		Pink felsic intrusive - different from the normal syenite in having a fairly fine grained, siliceous, pink coloured groundmass with small laths of dark minerals rather than the usual equigranular texture. Towards the end of the section, around 22', the phenocrysts of dark minerals become coarser.										
24.5'	39'		At about 24.5' the rock grades into a Hybrid Syenite/Diorite. The rock is now coarser grained and more equigranular, and has more dark minerals. Feldspars are about 50/50 pink K-spar and white plagioclase.										
			29.3' - a 1" quartz vein with large bleb of pyrite.										
			At 30.5' - 1/2" quartz vein at 50° to core axis; 31.8' - 1/2" quartz										

Diamond Drill Record

SAWYER CONSULTANTS INC.



DATE LOGGED 5/12/81
 COMPANY NAME Mono Gold Mines Inc.
 PROPERTY NAME Bannockburn

HOLE No. 104

FROM	TO	RECOVY	DESCRIPTION	SAMPLE				ASSAYS									
				FROM	TO	WIDTH	No.										
24.5'	39'	(cont.)	vein at 50° to core axis but in opposite direction. At 34.6' - 1/4" quart vein at 80° to core axis. Section 34.8'-36.0' has several fragments of white quartz. Minor disseminated pyrite, and possible chalcopyrite.														
39'	45.5'	98%	Biotite Hornblende Diorite - dark grey, fairly coarse grained rock with disseminated sulphides - pyrite and possible chalcopyrite - in small amount. 43.6'-44' - a local increase in pink feldspar content.														
45.5'	48.5'	99%	Siliceous Brecciated Zone - a banding/foliation at about 50° to core axis with much brecciation and associated quartz matrix, and some included fragments of pinkish material. In general there is an increase in sulphides in this section and the sulphides are slightly finer grained.														
48.5'	80'	99%	Quartzite - banded, very siliceous metasediment. Banding is variable at generally fairly high angle to core axis (55°-75°).														

Diamond Drill Record

SAWYER CONSULTANTS INC.



DATE LOGGED 5/12/81
 COMPANY NAME Mono Gold Mines Inc.
 PROPERTY NAME Bannockburn

HOLE No. 104

FROM	TO	RECOVY	DESCRIPTION	SAMPLE				ASSAYS							
				FROM	TO	WIDTH	No.								
48.5'	80' (cont.)		At 49' - a 6" quartz vein along core forming about half of the core.												
			Section 49'-53' varies from dark grey to grey-green in colour, with some pink, possibly hematitic streaks, and some more greenish, chloritic bands.												
			53' approx. - 8" brecciated zone with white quartz having included fragments of pink feldspars, some very coarse.												
			This is essentially an intrusive, syenite band.												
			At 54.2' - a similar 6" brecciated zone at about 15° to core axis.												
			54.7'-60.4' - the rock becomes even more siliceous and includes considerably more white quartz as veinlets, irregular bands, and as large "eyes" within the generally schistose siliceous matrix.												
			At 60' - a 1" brecciated band with included pink feldspar fragments.												
			At 61.5' - a 1½" brecciated zone with slightly increased sulphide content.												

Diamond Drill Record

SAWYER CONSULTANTS INC.



DATE LOGGED 5/12/81
 COMPANY NAME Mono Gold Mines Inc.
 PROPERTY NAME Bannockburn

HOLE No. 104

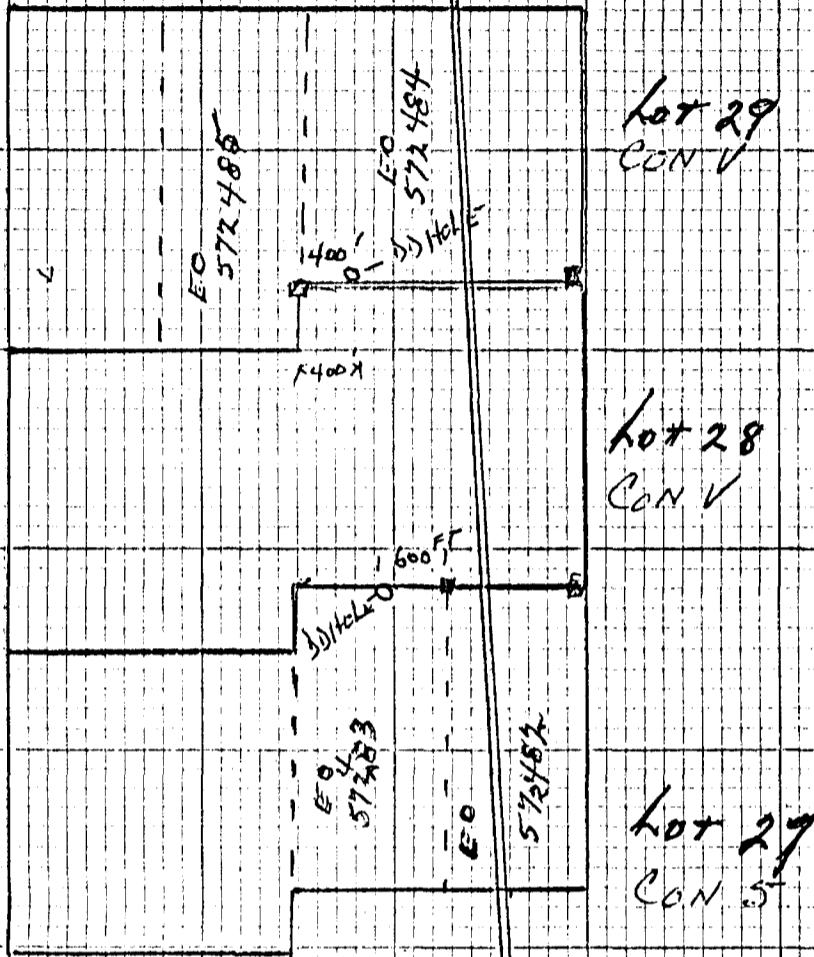
FROM	TO	RECOVERY	DESCRIPTION	SAMPLE				ASSAYS							
				FROM	TO	WIDTH	No.								
48.5'	80'(cont.)		Section 61.5'-63.5' is less banded, more chloritic and has sulphides throughout. At 64' - a local increase in sulphides. 64'-80' - generally, all very siliceous, banded metasediments. Some sections, e.g. 69'-70.5'; 74'-75.3', are more chloritic with green bands, and carry sulphides throughout.												
80'	84'	70%	Brecciated Zone - increased quartz content as veinlets, etc. in a groundmass of siliceous metasediments with some bands of pink, syenitic material. At 82.5' - 6" ground core; and at 83.5' - 6" ground core.												
84'	100'		Quartzite - Banded Siliceous Metasediment, as earlier section 48.5'-80'. 84.7' - 1' ground core. Section 87.5'-90.5' approx. is slightly more chloritic. 93'-94' - 1' ground core. Section 94.5'-95.5' - has more green, chloritic bands. 98.5'-100' - 18" ground core.												



100' - 103' End of hole. No recovery

(MADON CORK) MINES INC.)
ROBERT DAVID HOUSTON
MADON TOWNSHIP

DRILL HOLE LOCATIONS



SKETCH - NOT TO SCALE



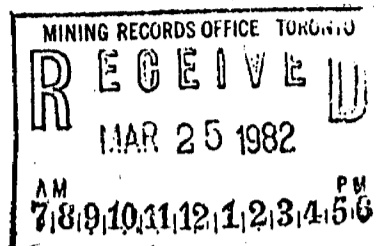
31C12NE0050 32 MADOC

900

Colborne, Ontario

March 19, 1982

Ministry of Natural Resources,
Mining Recorder,
99 Wellesley Street West,
Queen's Park,
Toronto, Ontario
M7A 1W3



Attention: Mrs. R. M. Charnesky

Dear Sirs:

RE: REPORT OF WORK
Mining Claims EO 572482/83
Township of Madoc

This letter will certify that Hole No. 104, Lot 27, Concession 5, in the Township of Madoc was drilled and lost at a depth of 103 feet due to a cave in.

Yours truly,

Dr. C. L. Emery, P. ENG.

CLE/11

MADOC TWP. # 14-82

Tudor Twp. M. 156

