

DIAMOND DRILLING



31C12NE0051 33 MADOC

010

TOWNSHIP: Madoc

REPORT No.: 33

WORK PERFORMED BY: Robert J. Ross

<u>CLAIM No.</u>	<u>HOLE No.</u>	<u>FOOTAGE</u>	<u>DATE</u>	<u>NOTE</u>
EO 552525	81-1	150.0	Nov/81	(1)

NOTES: (1) #25-82

COLLAR:	HOLE SURVEY		
	METHOD:		
	FOOTAGE	AZIMUTH	DIP
ELEVATION	COLLAR		-45°
CORE SIZE AX			
LOGGED BY J.B.P. Sawyer			
DATE LOGGED 5/12/81			
MAP REFERENCE No. 31C/12			

# Diamond Drill Record

SAWYER CONSULTANTS INC.

*ALBERT DAVID HOUSTON*

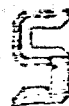
COMPANY NAME Houston Management Corporation Ltd.  
 PROPERTY NAME St. Joe Mine  
 DRILLING CONTRACTOR Eastern Ontario Diamond Drilling Ltd.  
 ASSAYER BONDAR CHECK - OTTAWA ONT  
 PURPOSE OF HOLE To test area in vicinity of old shaft.

HOLE No.	81-1
CLAIM NAME/No.	552525
COMMENCED	Nov 30/81
FINISHED	Dec 4/81
FINAL DEPTH	150'
PROJECT No.	

FROM	TO	RECOVY	DESCRIPTION	SAMPLE				ASSAYS					
				FROM	TO	WIDTH	No.						
0'	6'		Overburden. 6' casing in hole. Some pieces of core - probably from boulders or loose rock.										
6'	71.5'	99.5%	Siliceous Metasediment - a light grey to grey-brown, fairly siliceous metasediment, banded at 50° to core axis. Numerous white quartz stringers up to 1/2" wide but predominantly about 1/8" wide, and numerous random hairline fractures. Sections 9.5'-10' and 20.4'-22.4' are slightly more brecciated. At 26' - 1/2" white quartz vein at 50° to core axis. Section 40'-50.5' is much more finely banded and carries more numerous hairline fractures. From 51.2'-71.5' the rock assumes a lighter grey colour due to an increase in the number of quartz veinlets, and the rock generally becomes more quartzose. Numerous white quartz veins up to 3/4" wide, e.g. at 63', and at 63.8'.										

# Diamond Drill Record

SAWYER CONSULTANTS INC.



DATE LOGGED 5/12/81 ROBERT DAVID HOUSTON  
 COMPANY NAME Houston Management Corporation Ltd.  
 PROPERTY NAME St. Joe Mine

HOLE No. 81-1

FROM	TO	RECOVY	DESCRIPTION	SAMPLE				ASSAYS											
				FROM	TO	WIDTH	No.												
71.5'	150'	99.5%	At 71.5'-150' - brecciated zone composed largely of white quartz - i.e., white quartz veins and matrix with included greenish chloritic material.																
			Within this section, zones composed predominantly of white quartz are: 83'-94'; 97.5'-107.5'; 121'-127.4'; 138'-139.5'.																
			At 149' - 1' ground core.																
	150'		End of hole.																
			Note: The hole is drilled entirely within a silicified meta-sedimentary sequence, with much quartz veining and quartz injection.																

MINING

MINING RECORDER

FROM

ALBERT DAVID HOUSTON  
 BOX 190 WARRWORTH  
 ONT K0K 5K0

SKETCH

SUBJECT

ASSESSMENT WORK

REFERENCE

DATE

July 5/82

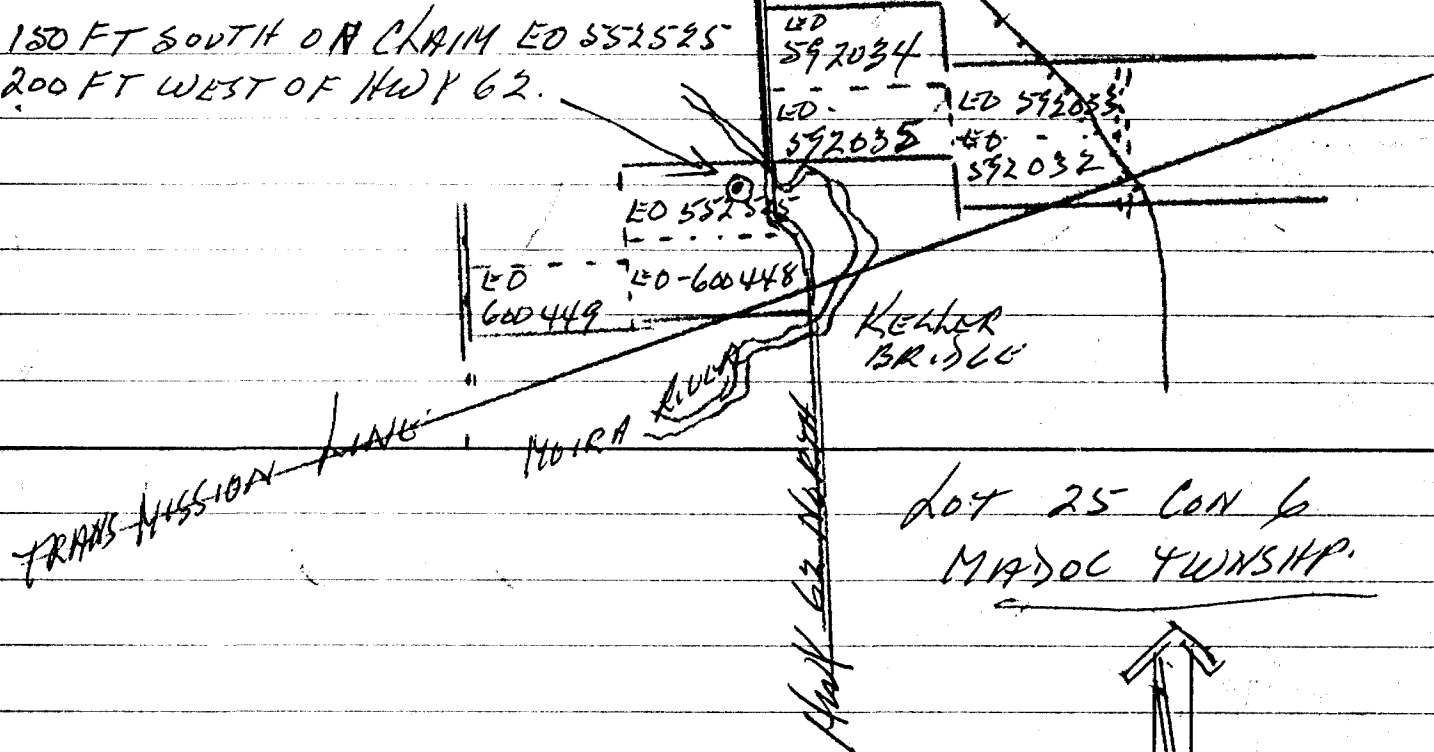
MESSAGE

MINING CLAIMS - 592032 - 592034 E.O. 510.

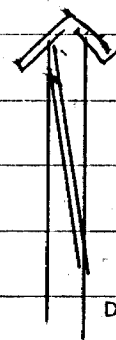
DIAMOND DRILL HOLE 150 FT CLAIM # 552525

DIAMOND DRILL HOLE # 81-1

150 FT SOUTH ON CLAIM E.O. 552525  
 200 FT WEST OF HWY 62.



LOT 25 CON 6  
 MADOC TOWNSHIP.



REPLY FROM

DATE