



31C12NW0023 30 METHUEN

010

DIAMOND DRILLING

TOWNSHIP: METHUEN

REPORT No.: 30

WORK PERFORMED BY: Preussag Canada Limited (C.Roger Young)

<u>CLAIM No.</u>	<u>HOLE No.</u>	<u>FOOTAGE</u>	<u>DATE</u>	<u>NOTE</u>
EO 449379	PR-80-10	198.0	Feb/80	(1)
	PR-80-11	202.0	Feb/80	(1)
EO 449311	PR-80-12	257.0	Feb/80	(1)

NOTES: (1) #48-80



31C12NW0023 30 METHUEN

020

PREUSSAG CANADA LIMITED

WORK ASSESSMENT REPORT

VANSICKLE AREA, METHEUN TOWNSHIP

R. T. CHATAWAY  
FREDERICTON, N. B.

LOCATION

The claims lie in Concessions I and II, Lots 3 to 6 inclusive in Metheun Township in the area of Vansickle which is 5 miles north of Cordova Mines. A seasonal road traverses the claims.

GENERAL GEOLOGY

Narrow units of dolomite and limestone of the Grenville series of the Precambrian Shield outcrop between volcanics and gneisses. The regional strike is NE-SW and dips are generally 45-50° SE.

DIAMOND DRILLING

Three holes were completed on the claims. Hole PR-80-10 and PR-80-11 are located on claim EO 449379 and hole PR-80-12 is located on claim EO 449311.

<u>HOLE</u>	<u>DIP</u>	<u>DEPTH</u>	<u>DAYS</u>
PR-80-10	-52°	198'	198
PR-80-11	-52°	202'	202
PR-80-12	-52°	257'	257
	TOTAL:	657 days	

The contiguous claims are 497152, 449379, 449380, 449311, 449210, 454680, and 463064. The work is to be applied as follows:

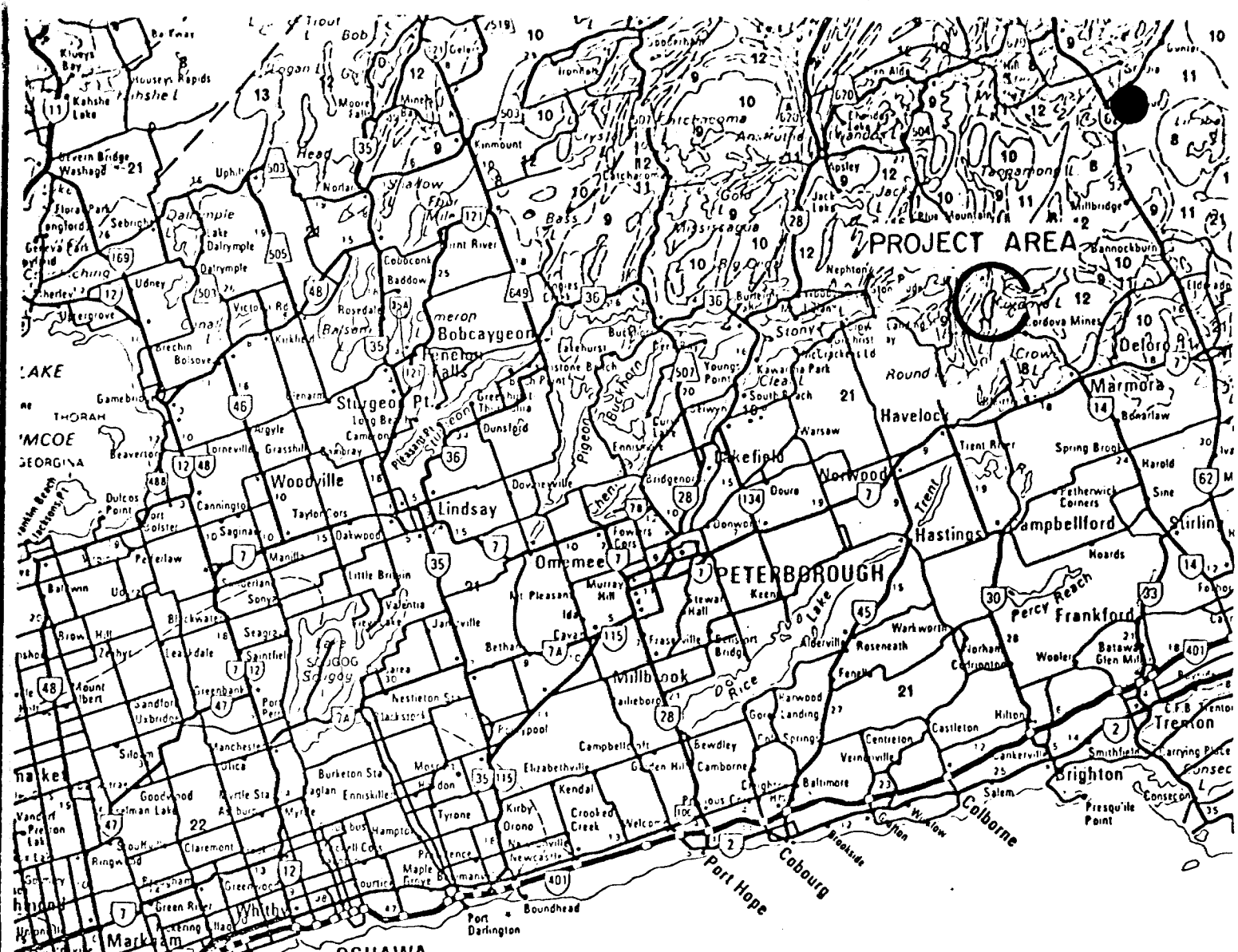
EO 497152	175 days
EO 449379	120 days
EO 449380	120 days
EO 449311	58 days
EO 449310	58 days
EO 454680	58 days
EO 463064	58 days

---

647 days

## INTRODUCTION

Preussag Canada Limited has 3 claims under option from Northumberland Mines Ltd and 4 claims under lease from Roger Young, all located in Metheun Township, approximately 13 miles NE of Havelock, Ontario. During February 1980 3 drill holes were completed on the claims. The following report is a request for assessment credit for the drilling program completed.



PROJECT AREA

# Map 2418

## Ontario Geological Survey

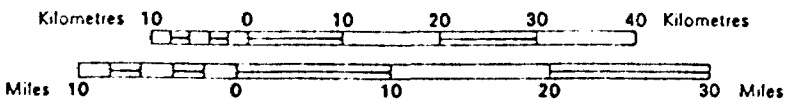
### LEGEND

- |                            |                 |                    |                    |
|----------------------------|-----------------|--------------------|--------------------|
|                            | Grenville Front |                    | Fault or Lineament |
| <b>PROVINCIAL HIGHWAYS</b> |                 | <b>OTHER ROADS</b> |                    |
|                            | Multilane       |                    | Paved multilane    |
|                            | Paved/Gravel    |                    | Paved or gravel    |

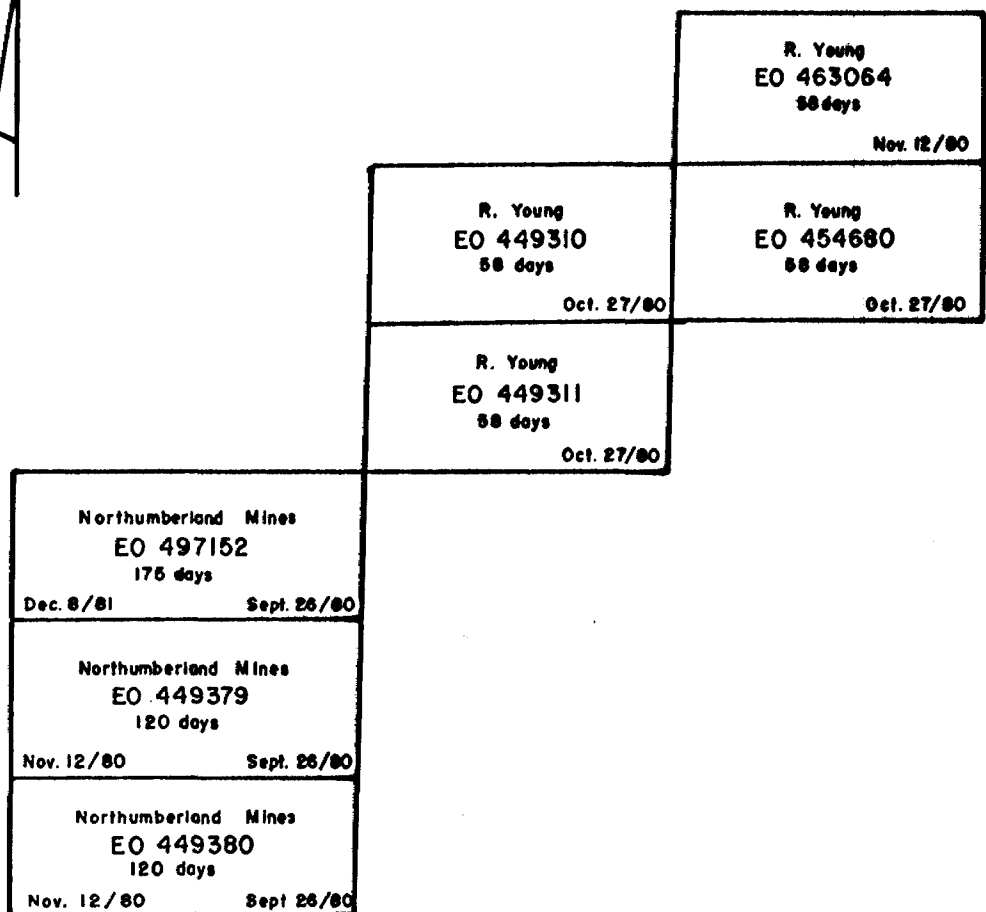
For additional information refer to Ontario/Canada Official Road Map

**BELMONT PROJECT**  
Location Map

Scale 1:800 000



TORONTO  
SAUGA

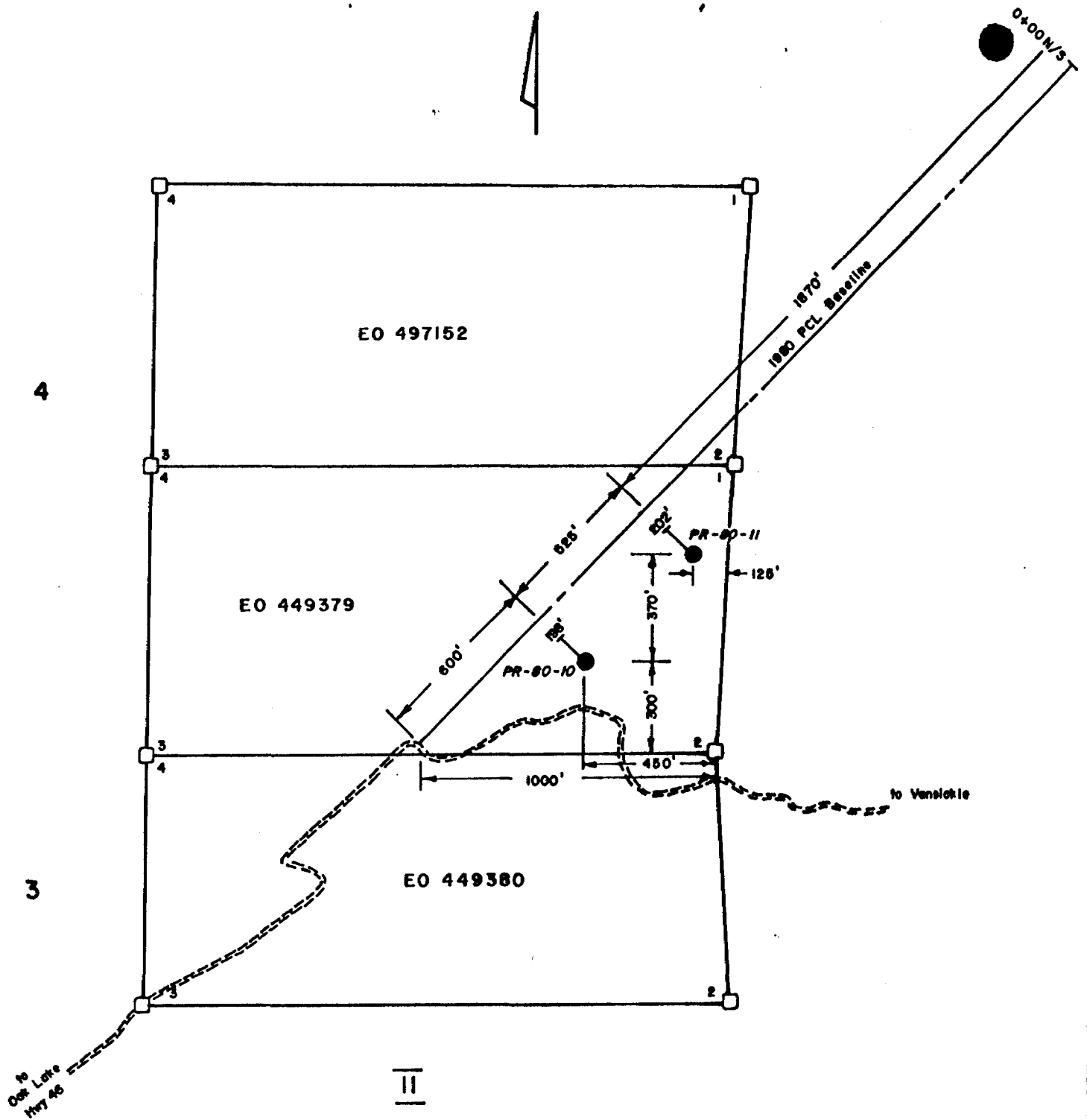


II

I

**PREUSSAG CANADA LIMITED**  
**VANSICKLE AREA**  
**METHUEN TWP.**  
**ONTARIO**  
**Claims**  
Feb. '80

N



PREUSSAG CANADA LIMITED  
VANSICKLE AREA  
METHUEN TWP.  
ONTARIO  
Diamond Drill Hole Plan for  
PR-80-10 & PR-80-11  
Feb. '80



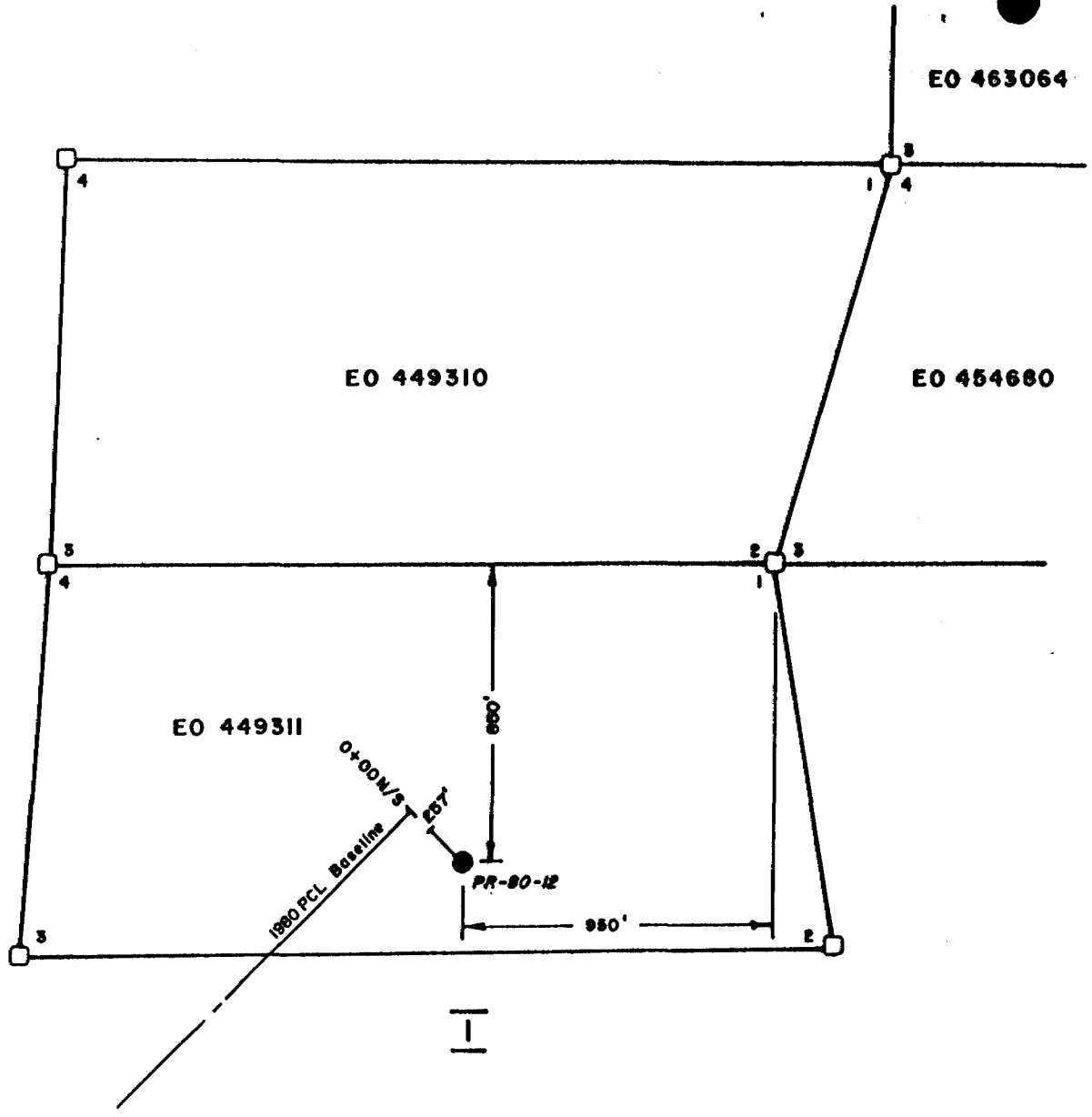
EO 463064

EO 449310

EO 454680

5

EO 449311



PREUSSAG CANADA LIMITED  
VANSICKLE AREA  
METHUEN TWP.  
ONTARIO

Diamond Drill Hole Plan for  
PR-80-12  
Feb. '80





# PREUSSAG

PROPERTY BELMONT CALCITE - VANSICKLE

## DIAMOND DRILL RECORD

HOLE N° PR-80-10SHEET N° 1 OF 2LATITUDE L 7 + 30 SSECTION L 7 + 30 SSTARTED FEB. 8, 1980DEPARTURE STN 0 + 70 E (meters)DATUM VANSICKLE BASELINE (1980)COMPLETED FEB. 8, 1980DIP - 52°ULTIMATE DEPTH 60.4 mELEVATION SURFACEBEARING 292° TRUEPROPOSED DEPTH 90.0 m

ACID TESTS	
Footage	Corrected Dip
Collar	-52°

DEPTH			FORMATION	SAMPLE N°	FROM	TO	LENGTH	%CaCO <sub>3</sub>	%MgCO <sub>3</sub>	%SiO <sub>2</sub>	%Fe <sub>2</sub> O <sub>3</sub>	BRIGHTNESS INDEX
From	To	Length										
0.0	3.7	3.7	Overburden									
3.7	17.7	14.0	Dolomite A whitish-brown fractured and altered banded dolomite to dolomitic gneiss. Strong iron oxidation from 11.3 - 16.5.									
17.7	20.7	3.0	Amphibolite Dyke A fine-grained dark green dyke rock with minor calcite in fractures.									
20.7	23.8	3.1	Dolomite A greyish-white fine-grained crystalline (sugary) rock with a siliceous matrix.	12554	20.7	23.8	3.1					

Drilled By HEATH & SHERWOOD DRILLINGDate FEBRUARY 10, 1980Logged By R.T. CHATAWAY



PREUSSAG

DIAMOND DRILL RECORD

PROPERTY BELMONT CALCITE - VANSICKLE

HOLE N° PR-80-10

SHEET N° 2 OF 2

DEPTH			FORMATION	SAMPLE N°	FROM	TO	LENGTH	%CaCO <sub>3</sub>	%MgCO <sub>3</sub>	%SiO <sub>2</sub>	%Fe <sub>2</sub> O <sub>3</sub>	BRIGHTNESS INDEX
From	To	Length										
23.8	60.4	36.6	Marble	12555	23.8	26.8	3.0					
			A dolomitic-rich limestone,	12556	26.8	29.9	3.1					
			greyish-white to bluish-white	12557	29.9	32.9	3.0					
			in colour with a siliceous	12558	32.9	36.3	3.4					
			matrix	12559	36.3	39.9	3.6					
			29.9 - 31.4 strong iron oxide alteration.	12560	39.9	44.8	4.9					
			31.4 - 36.3 medium grained marble with dolomite									
			and quartzite.									
			36.3 - 39.0 iron oxide zone.									
			39.0 - 44.8 medium grained marble with dolo-									
			mite and quartzite.									
			44.8 - 47.5 iron oxide zone.									
			44.8 - 60.4 7.6 m of lost core in fault zone,									
			oxidized and altered rock.									
			50.0 - 58.2 iron oxide zone.									
60.4			End of Hole									
198'			Casing pulled.									

Date FEBRUARY 10, 1980

Logged By R.T. CHATAWAY



# PREUSSAG

## DIAMOND DRILL RECORD

PROPERTY BELMONT CALCITE - VANSICKLEHOLE N° PR-80-11SHEET N° 1 OF 2LATITUDE L 5 + 70 SSECTION L 5 + 70 SSTARTED FEB. 7, 1980DEPARTURE STN 0 + 70 E (meters)DATUM VANSICKLE BASELINE (1980) COMPLETED FEB. 7, 1980DIP - 52°ULTIMATE DEPTH 61.6 mELEVATION SURFACEBEARING 292° TRUEPROPOSED DEPTH 90.0 m

ACID TESTS	
Footage	Corrected Dip
Collar	-52°

DEPTH			FORMATION	SAMPLE N°	FROM	TO	LENGTH	%CaCO <sub>3</sub>	%MgCO <sub>3</sub>	%Si O <sub>2</sub>	%Fe <sub>2</sub> O <sub>3</sub>	BRIGHTNESS INDEX
From	To	Length										
0.0	3.7	3.7	Overburden									
3.7	6.7	3.0	Dolomite									
			A calcitic dolomite fine to medium grained white to beige in colour.	12549	4.0	6.7	2.7					
6.7	12.2	5.5	Marble									
			A bluish-grey medium grained crystalline rock.	12550	6.7	9.8	3.1					
				12551	9.8	12.2	2.4					
12.2	39.6	27.4	Dolomite									
			A bluish-grey to light brownish-white fine to medium grained crystalline rock with a siliceous matrix in part and minor crystalline calcite sections.	12552	12.2	15.2	3.0					
				12553	15.2	18.3	3.1					

Drilled By HEATH & SHERWOOD DRILLINGDate FEBRUARY 9, 1980Logged By R. T. CHATAWAY





PREUSSAG

DIAMOND DRILL RECORD

PROPERTY BELMONT CALCITE - VANSICKLE

HOLE N° PR-80-12

SHEET N° 1 OF 2

LATITUDE L 0 + 00 S

SECTION L 0 + 00 S

STARTED FEB. 10th, 1980

DEPARTURE STN. 0 + 60 E (meters)

DATUM VANSICKLE BASELINE (1980) COMPLETED FEB. 11TH, 1980

DIP -52°

ULTIMATE DEPTH 78.3 m

ELEVATION SURFACE

BEARING 292° TRUE

PROPOSED DEPTH 90.0 m

ACID TESTS	
Footage	Corrected Dip
Collar	-52°

DEPTH			FORMATION	SAMPLE N°	FROM	TO	LENGTH	%CaCO <sub>3</sub>	%MgCO <sub>3</sub>	%Si O <sub>2</sub>	%Fe <sub>2</sub> O <sub>3</sub>	BRIGHTNESS INDEX
From	To	Length										
0.0	2.1	2.1	Overburden									
2.1	9.1	7.0	Marble									
			A blue grey fine-grained very hard crystalline rock with a siliceous matrix and some narrow quartzite bands and minor mica throughout.									
			2.1 - 3.0 dolomite section.									
			Core angles generally 90° to c.a.									
9.1	11.9	2.8	Dolomite									
			A light brownish white fine-grained crystalline rock. Core angles at 90° to the c.a.									
11.9	21.3	9.4	Mafic Dyke									
			A dark green hornblende-biotite dyke. Contacts at 65° to c.a. Core angles at 70° to c.a.									

Drilled By HEATH & SHERWOOD DRILLING

Date FEBRUARY 12, 1980

Logged By R. T. CHATAWAY



PREUSSAG

HOLE N° PR-80-12

PROPERTY BELMONT CALCITE - VANSICKLE

DIAMOND DRILL RECORD

SHEET N° 2 OF 2

DEPTH			FORMATION	SAMPLE N°	FROM	TO	LENGTH	%CaCO <sub>3</sub>	%MgCO <sub>3</sub>	%SiO <sub>2</sub>	%Fe <sub>2</sub> O <sub>3</sub>	BRIGHTNESS INDEX
From	To	Length										
21.3	25.9	4.6	Dolomite									
			As in section 9.1 - 11.9 m.									
25.9	42.7	16.8	Marble									
			A greyish-white fine to medium	12561	25.9	30.5	4.6					
			grained siliceous crystalline	12562	30.5	35.1	4.6					
			(calcite) rock.	12563	35.1	39.6	4.5					
			32.0 - 38.7 less siliceous	12564	39.6	42.7	3.1					
42.7	67.1	24.4	Dolomite									
			A greyish-white fine grained siliceous	12565	42.7	45.7	3.0					
			crystalline rock. In part very siliceous									
			(quartzite) Minor marble sections.									
67.1	78.3	11.2	Skam									
			A blue grey crystalline silicified limestone									
			3.0 m of ground core between 69.2 - 78.3									
78.3			End of Hole									
			Casing pulled.									
251'												

Date FEBRUARY 12, 1980

Logged By R. T. CHATAWAY