



31C12SE0061 12 MARMORA

010

# Diamond Drilling

Township *of Marmora*

Report N<sup>o</sup>: 12

Work performed by: *William A. Beninger*

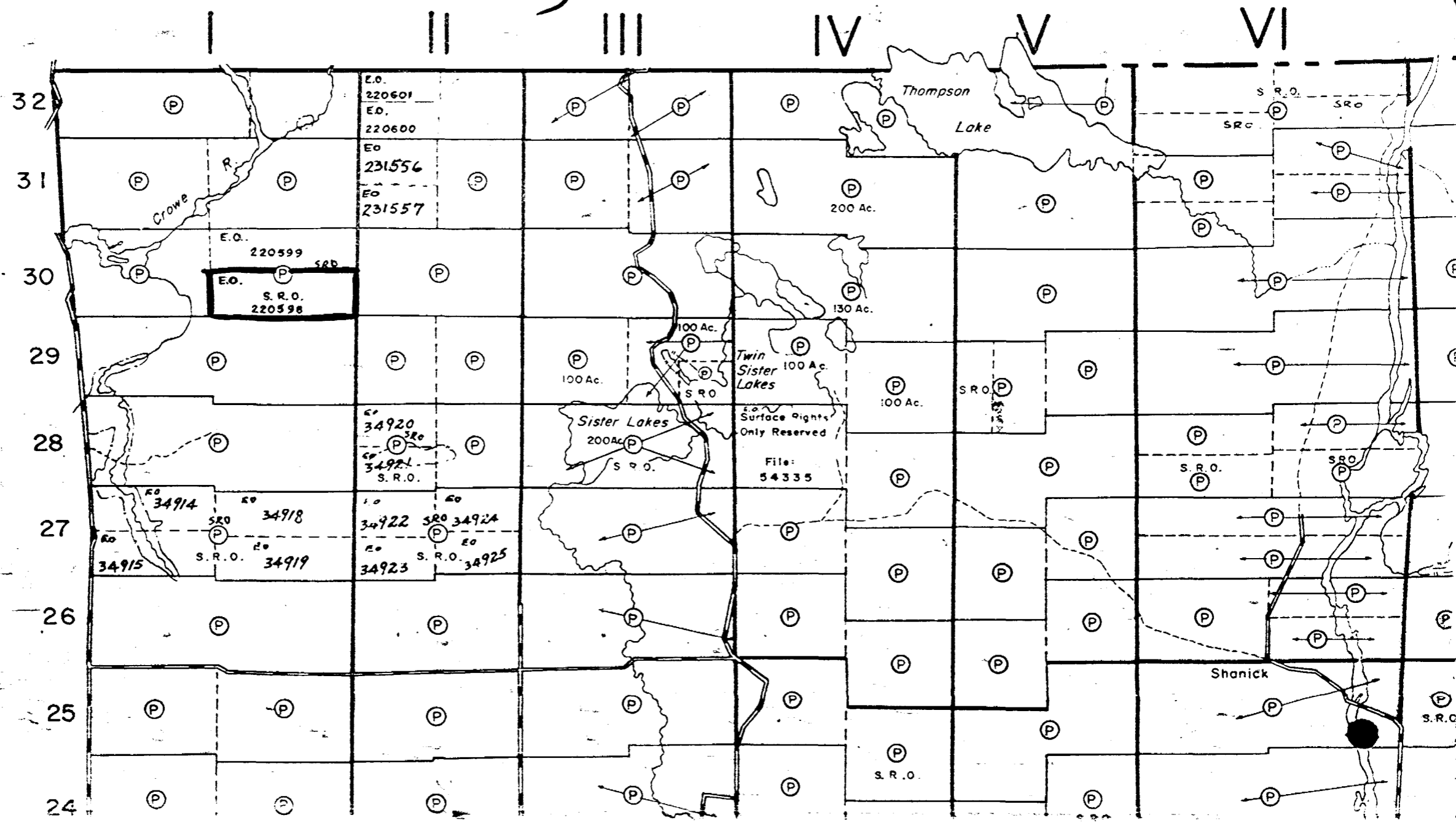
Claim N <sup>o</sup>	Hole N <sup>o</sup>	Footage	Date	Note
<i>EO 220598</i>	<i>1</i>	<i>204'</i>	<i>May/70</i>	<i>(1)</i>

## Notes:

*(1) 54/70*

# MARMORA TWP (M. 122)

# Lake Twp. (M. 110)



32

31

30

29

28

27

26

25

24

I

II

III

IV

V

VI

Crowe R.

Thompson Lake

Twin Sister Lakes

Sister Lakes

Shanick

E.O.  
220601  
E.O.  
220600  
E.O.  
231556  
E.O.  
231557

E.O.  
220599  
S.R.O.  
E.O.  
S.R.O.  
220598

E.O.  
34920  
S.R.O.  
E.O.  
34921  
S.R.O.  
E.O.  
34922  
S.R.O.  
E.O.  
34923  
S.R.O.  
E.O.  
34924  
S.R.O.  
E.O.  
34925  
S.R.O.

E.O.  
34914  
S.R.O.  
E.O.  
34915  
S.R.O.  
E.O.  
34918  
S.R.O.  
E.O.  
34919  
S.R.O.

E.O.  
Surface Rights  
Only Reserved  
File:  
54335

200 Ac.

130 Ac.

100 Ac.  
100 Ac.  
100 Ac.  
100 Ac.

S.R.O.

S.R.O. S.R.O.

Lake

S.R.O.

S.R.O.

S.R.O.

S.R.O.



THE MINING ACT - DEPARTMENT OF MINES  
**DIAMOND DRILLING LOG**

Start a new page for every new hole, but fill in top portion of form only on first page for each hole.

FILL IN ON EVERY PAGE

HOLE NO. 1 PAGE NO. 1

DRILLING COMPANY <i>Eastern Ontario Diamond Drillers</i>		COLLAR ELEVATION <i>20'</i>	BEARING OF HOLE FROM TRUE NORTH <i>West</i>	TOTAL FOOTAGE <i>204'</i>	DIP OF HOLE AT collar <i>35°</i>	LOCATION OF HOLE IN RELATION TO A FIXED POINT ON THE CLAIM 	MAP REFERENCE NO.	CLAIM NO. <i>E.O. 220598</i>
DATE HOLE STARTED <i>May 27th/70</i>	DATE COMPLETED <i>June 5th/70</i>	DATE LOGGED <i>June 5th/70</i>	LOGGED BY <i>C. Roger Young</i>				LOCATION (Tp., Lot, Con. of Lot and Range) <i>S.E. 1/4 LOT 30 CON. 1, MARMORA TWP.</i>	PROPERTY NAME <i>Beninger Claim</i>
EXPLORATION CO., OWNER OR OPTIONEE <i>Wm. A. Beninger</i>		DATE SUBMITTED <i>July 15th/70</i>	SUBMITTED BY (Signature) <i>C. Roger Young</i>					

FOOTAGE FROM	TO	ROCK TYPE	DESCRIPTION <small>Colour, grain size, texture, minerals, alteration, etc.</small>	PLANAR FEATURE ANGLE *	CORE SPECIMEN FOOTAGE +	YOUR SAMPLE NUMBER	SAMPLE FOOTAGE		SAMPLE LENGTH	ASSAYS +	
							FROM	TO			
0	175'	<i>Slaty Schist</i>	<i>Greyish black, Medium grain, Pyritized Pyrrhotite</i>	<i>8'</i>	<i>5'</i>	<i>1028</i>	<i>92'</i>	<i>97'</i>	<i>5'</i>	<i>Zinc 0.39%</i>	
			<i>(Sample representative of 0-175')</i>							<i>Copper 0.05%</i>	
										<i>Iron (Fe) 17.3%</i>	
										<i>Sulphur 13.7%</i>	
175'	204'	<i>Quartzite Schist</i>	<i>Pyritized</i>								

\* For features such as foliation, bedding, schistosity, measured from the long axis of the core.

+ Additional credit available. See Assessment Work Regulations.

CON. I MARMORA

CON. II

E.O. 2205-99

E.O. 2205-98

001  
3 300 300

1  
2