



31C12SW0011 12 METHUEN

010

Diamond Drilling

Township OF METHUEN

Report NO: 12

Work performed by: C. ROGER YOUNG & B. C. ROBSON

Claim NO	Hole NO	Footage	Date	Note
EO 29926 SW $\frac{1}{4}$ 5/I	1	209'	Dec/62	(1)
EO 30909 NW $\frac{1}{4}$ 5/I	2	249'	Apr/64	(2)
EO 30908 NE $\frac{1}{4}$ 5/I	3	102'	Apr/64	(2)
EO 31139 NE $\frac{1}{4}$ 4/II	4	104'	May/64	(2)

Notes:

- (1) work recorded by C. Roger Young, December 10, 1962; claim later held jointly
- (2) claim held jointly

12 CON. I METHUEN TWP.



LAKE TWP.

E.O. 30132

E.O. 30133

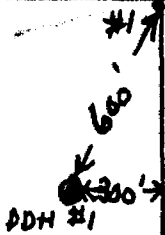
POWER LINE

N.W. 1/4 LOT 5
E.O. 30129

E.O. 30130

#4

S.W. 1/4 LOT 5
E.O. 29926



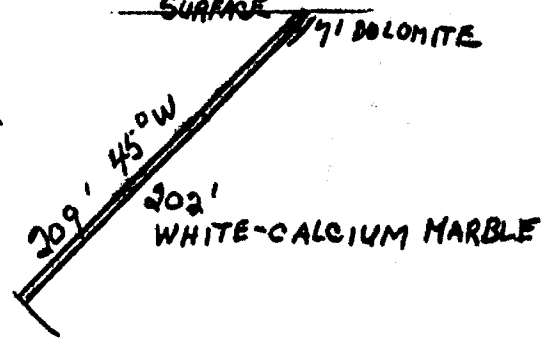
E.O. 30131

#3

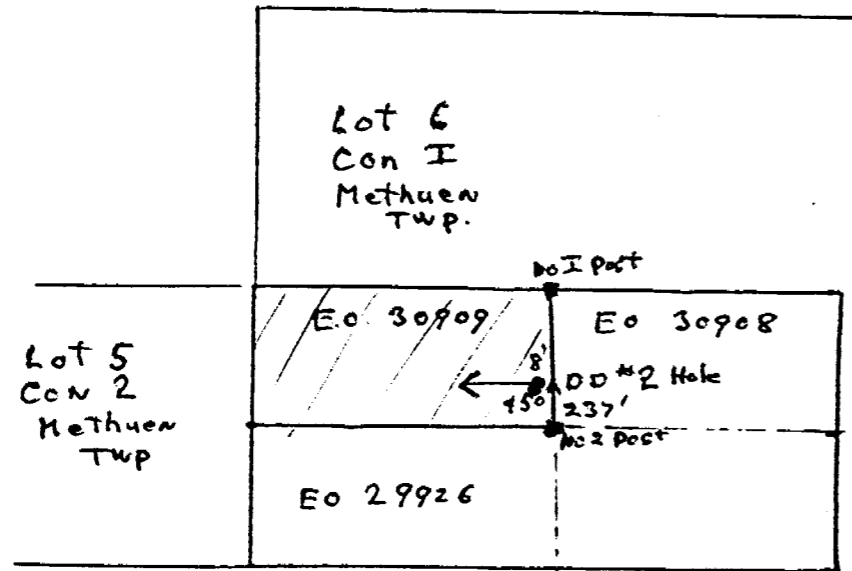
#2

DDH #1 ON E.O. 29926
SURFACE
71 DOLOMITE

DRILL LOG



Location Diamond Drill Hole #2
Claim E.O. 30909 Methuen Twp
Scale 1" = 1320 feet



DIAMOND DRILL RECORD

PROPERTY VANSICKLE

Claim E.O. 30909

HOLE NO. 2

SHEET NUMBER 1

SECTION FROM 0° TO 185°

STARTED April 15/64

LATITUDE 237' north and 8' west

DATUM _____

COMPLETED April 28/64

DEPARTURE from the number 2 post
of claim E0 30909

BEARING due west

ULTIMATE DEPTH 249'

ELEVATION _____

DIP 45 degrees

PROPOSED DEPTH 300'

DEPTH FEET	FORMATION	SAMPLE NO.	WIDTH OF SAMPLE	GOLD \$	SLUDGE GOLD \$
0' - 18'	Casing				
18' - 36'8"	Basal beds				
36'8"- 39'6"	Lost core				
39'6"- 50'3"	Basal beds				
50'3"- 52'8"	Ground and lost core				
52'8"- 56'	Basal beds				
56' - 56'7"	Dolomite grey and siliceous				
56'7"- 61'	Highly altered clayey material with sulphides				
61' - 61'6"	Dolomite grey siliceous				
61'6"- 62'	Highly altered clayey material				
62' - 64'2"	Lost core				
64'2"- 93'	Dolomite grey and siliceous badly broken				
93' - 125'	Crystalline limestone varying from grey to white				
125' - 135'	Crystalline limestone fine grained and white				
135' - 136'	Lost core				
136' - 137'7"	Crystalline limestone fine grained white				
137'7"-138'3"	Amphibolite band				
138'3"-146'2"	Crystalline limestone fine grained white				
146'2"-153'	Dolomite fine grained discoloured				
153' -171'	Crystalline Limestone fine grained white				
171' -185'	Crystalline limestone grey coloured				

N.M.P. TORONTO-STOCK FORM NO. 301 REV. 12/51

DRILLED BY George Downing Estate Drilling Ltd

SIGNED _____

R. Robson

DIAMOND DRILL RECORD

PROPERTY VANSICKLE Claim E.O. 30909 **HOLE NO.** 2

SHEET NUMBER 2 SECTION FROM 185' TO 249' STARTED April 15/64
 LATITUDE 237' north and 8' west DATUM _____ COMPLETED April 28/64
 DEPARTURE from the number 2 post BEARING due west ULTIMATE DEPTH 249'
of claim EO 30909 DIP 45 degrees PROPOSED DEPTH 300'
 ELEVATION _____

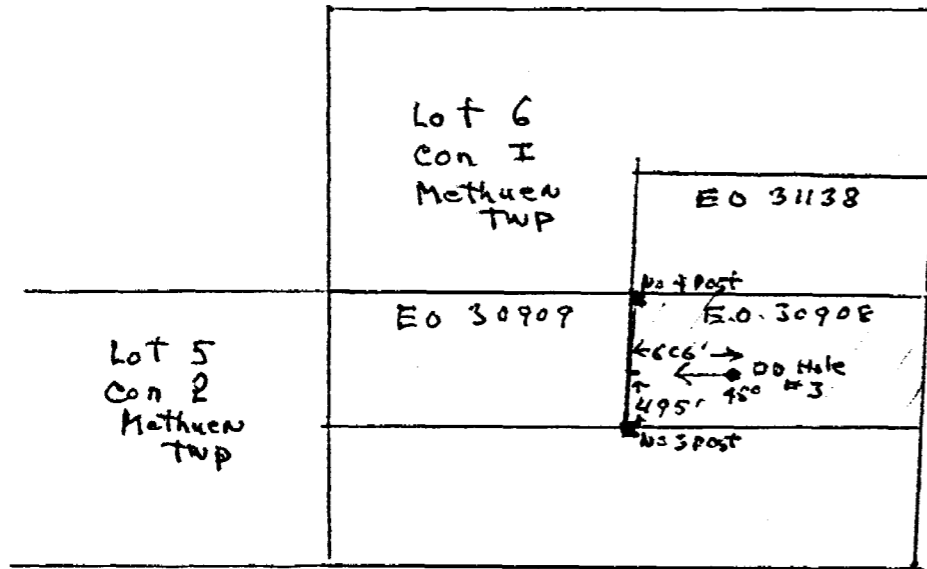
DEPTH FEET	FORMATION	SAMPLE NO.	WIDTH OF SAMPLE	GOLD \$	SLUDGE GOLD \$
185' - 198'4"	Crystalline Limestone fine grained white a few greyish sections of very light colour				
198'4" - 227'	Crystalline limestone grey coloured				
227' - 240'2"	Crystalline limestone fine grained very white				
240'2" - 244'	Crystalline limestone grey coloured				
244' - 249'	Crystalline limestone fine white colour				
249'	END OF HOLE				

N.M.P. TORONTO—STOCK FORM NO. 501 REV. 12/51
 George Downing Estate Drilling Ltd.

DRILLED BY _____ SIGNED RO Nelson

Location Diamond Drill Hole #3
claim E.O. 30908 Methuen TWP

Scale 1" = 1320ft.



DIAMOND DRILL RECORD

PROPERTY VANSICKLE Claim E.O. 30908 HOLE NO. 3

SHEET NUMBER 1 SECTION FROM 0' TO 102' STARTED April 29/64
 LATITUDE 495' north and 606' DATUM _____ COMPLETED May 5/64
 DEPARTURE east from NO 3 post of BEARING Due west ULTIMATE DEPTH 102'
claim E.O. 30908 DIP 45 degrees PROPOSED DEPTH 100'
 ELEVATION _____

DEPTH FEET	FORMATION	SAMPLE NO.	WIDTH OF SAMPLE	GOLD \$	SLUDGE GOLD \$		
0 - 5'	Casing						
5' - 44'3"	Dolomite impure of varying shades of grey siliceous in places with very narrow schist bands throughout.						
44'3" - 50'	Amphibolite schist with a few specks pyrite						
50' - 54'8"	Lost core						
54'8" - 102'	Amphibolite schist siliceous in places and a few specks of pyrite throughout.						
102'	END OF HOLE						

Location Diamond Drill Hole #4
Claim E0 31139 Methuen Twp

Scale 1" = 1320 ft

