



31C15NW0065 14 PALMERSTON

010

Diamond Drilling

Township OF PALMERSTON

Report N^o: 14 (page 1)

Work performed by: REXDALE MINES LTD.

Claim N ^o	Hole N ^o	Footage	Date	Note
EO 36375	A- 1	94'	June/69	(1)
	A- 2	119'	July/69	(1)
	A- 3	104'	July/69	(1)
	A- 4	101'	July/69	(1)
	A- 5	101.6'	July/69	(1)
	A- 6	120'	July/69	(1)
	A- 7	107.1'	July/69	(1)
	A- 8	40'	July/69	(1)
	A- 9	102.8'	July/69	(1)
	W- 3	33.8'	Apr/69	(1)
	W- 4	29.6'	Apr/69	(1)
	W- 5	27.2'	May/69	(1)
W- 6	88.4'	May/69	(1)	
EO 36373	F- 1	102'	May/69	(1)
	F- 2	165'	May/69	(1)
	F- 3	154'	May/69	(1)
	F- 4	107'	May/69	(1)
	F- 5	113'	May/69	(1)
	F- 6	128.2'	June/69	(1)
	F- 7	433'	June/69	(1)
	F- 8	162.3'	June/69	(1)
	F- 9	163.7'	June/69	(1)
	F- 10	150'	July/69	(1)
	F- 11	112'	July/69	(1)
	F- 12	118.5'	July/69	(1)
EO 36373	B- 1	84'	Apr/69	
	B- 2	101'	Apr/69	

Notes: (1) 86/69



Diamond Drilling

Township OF PALMERSTON

Report NO: 14 (page 2)

Work performed by: REXDALE MINES LTD.

Claim NO	Hole NO	Footage	Date	Note
EO 36372	B- 3	102'	May/69	
	B- 4	107'	May/69	
	B- 5	118'	May/69	
	B- 7	126'	May/69	
EO 36371	B- 6	119'	May/69	
	B- 8	55'	May/69	
	B- 9	84'	June/69	
	B- 10	51'	June/69	
	B- 11	85'	June/69	
	B- 12	142'	June/69	
	B- 13	139'	June/69	
	B- 14	163'	June/69	
		<u>4352.2'</u>		
	39			

Notes:

REXDALE MINES LIMITED

(NO PERSONAL LIABILITY)

12 RICHMOND STREET EAST
SUITE 101 - 550 - TORONTO, ONTARIO

368-3120
368-7367
PHONES - 368-4615
368-4616

October 31, 1969

Department of Mines,
Parliament Buildings,
Toronto, Ontario

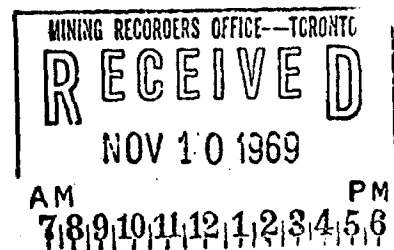
Dear Sirs:

The diamond drill core for the enclosed assessment work forms and plans is stored at the main camp on claim EO-36372 in an open faced core shed, plus arrangement adjacent to this. Ends of the boxes are marked as to drill number and footage.

Drill hole collars on the property are marked with 6 ft. by 3 by 3 inch posts which carry the hole number and footage and where applicable the dip and bearing. In many instances these are painted bright orange.

Yours truly,

J. C. Baker
J. C. Baker



A-ZONE
REXDALE MINES LTD.
PALMERSTON TWP.
DIAMOND DRILL HOLE LOCATIONS

CLAIM EO 36375

NO 4
POST

LINE 20N00

517.0

LINE 18N50
15

14W00

16W00

CLAIM LINE
AT 17W15

SCALE: 1" = 30'

A-ZONE
REXDALE MINES LTD.
PALMERSTON TWP.
DIAMOND DRILL HOLE LOCATIONS

CLAIM EO 36375

Q NO 4
POST

LINE 20N00

517.0'

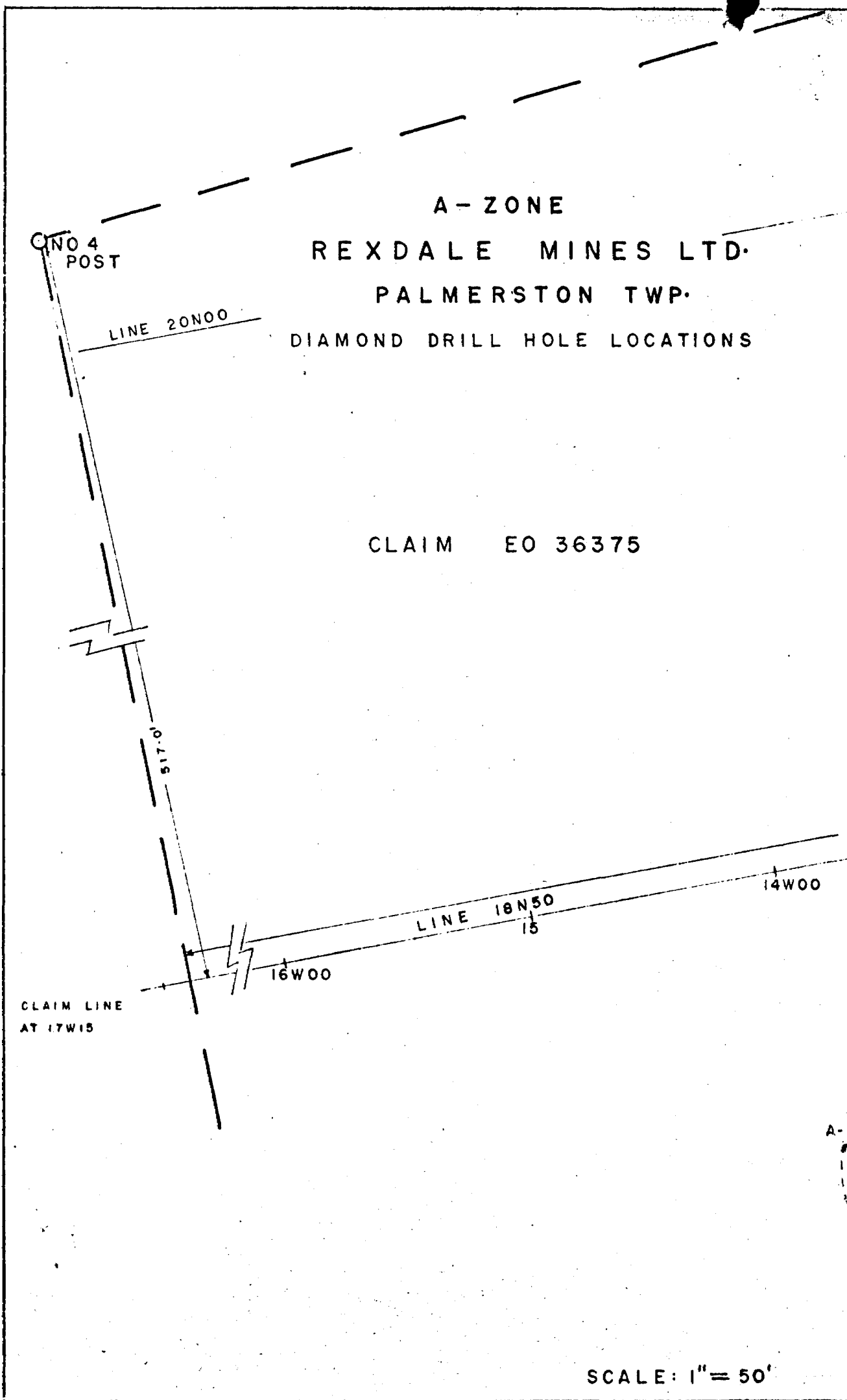
LINE 18N50
15

14W00

16W00

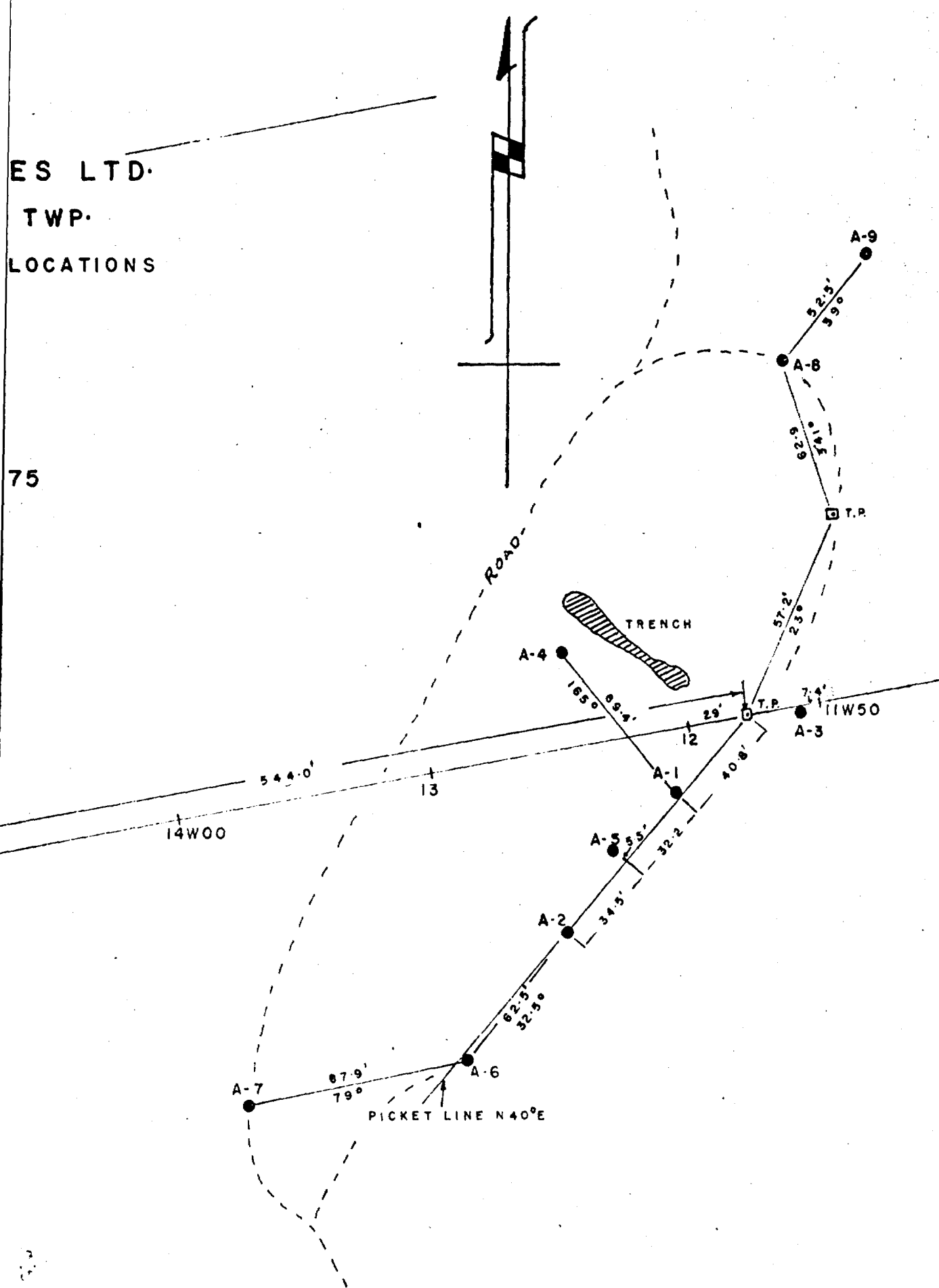
CLAIM LINE
AT 17W15

SCALE: 1" = 50'



ES LTD.
TWP.
LOCATIONS

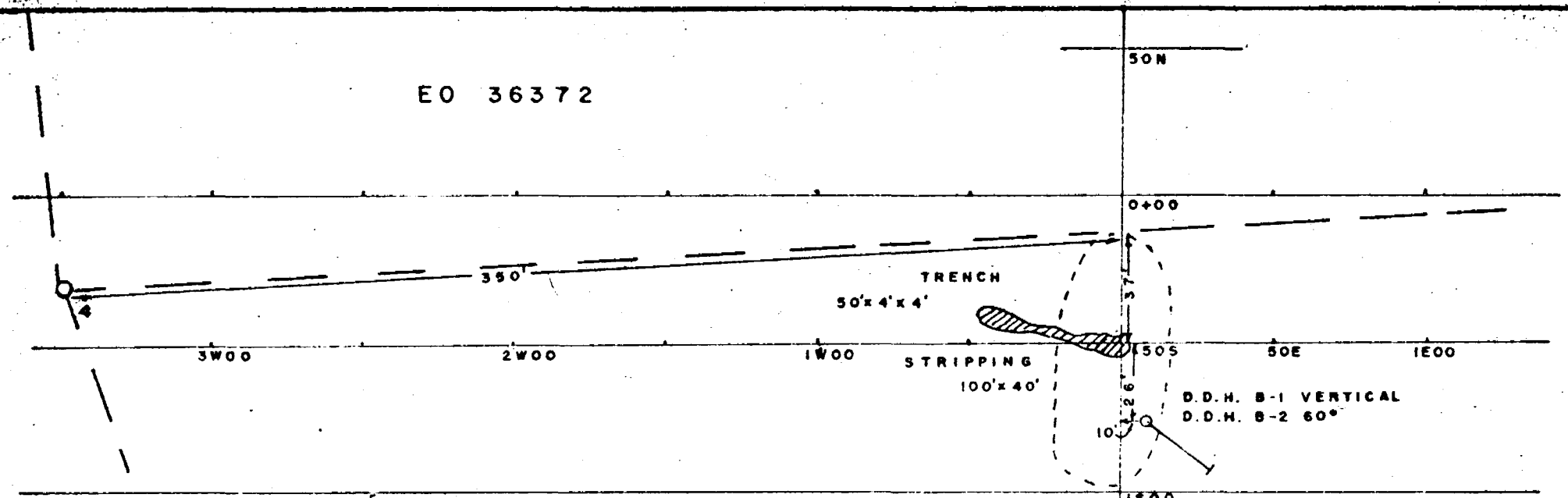
75



SCALE: 1" = 50'

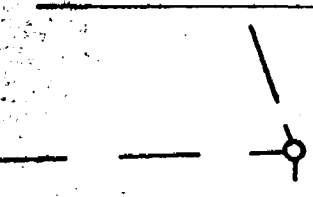
J. C. Baker
JULY 1969

EO 36372



EO 36373

36377



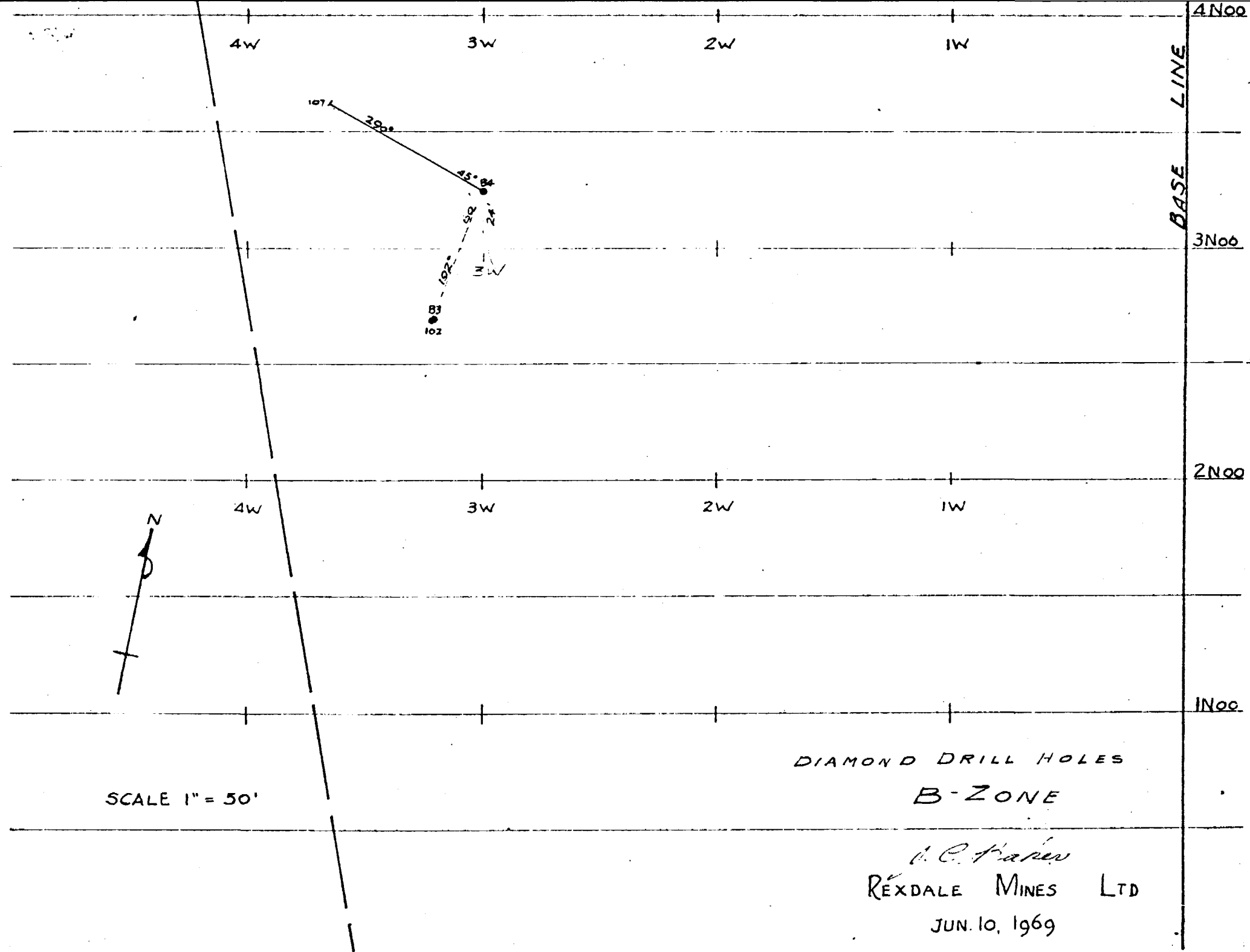
36378

REXDALE MINES LTD.
 PALMERSTON TWP.
 LOWER B-ZONE
 STRIPPING TRENCHING
 DIAMOND DRILLING

SCALE: 1" = 50'

BASE LINE N-110°W

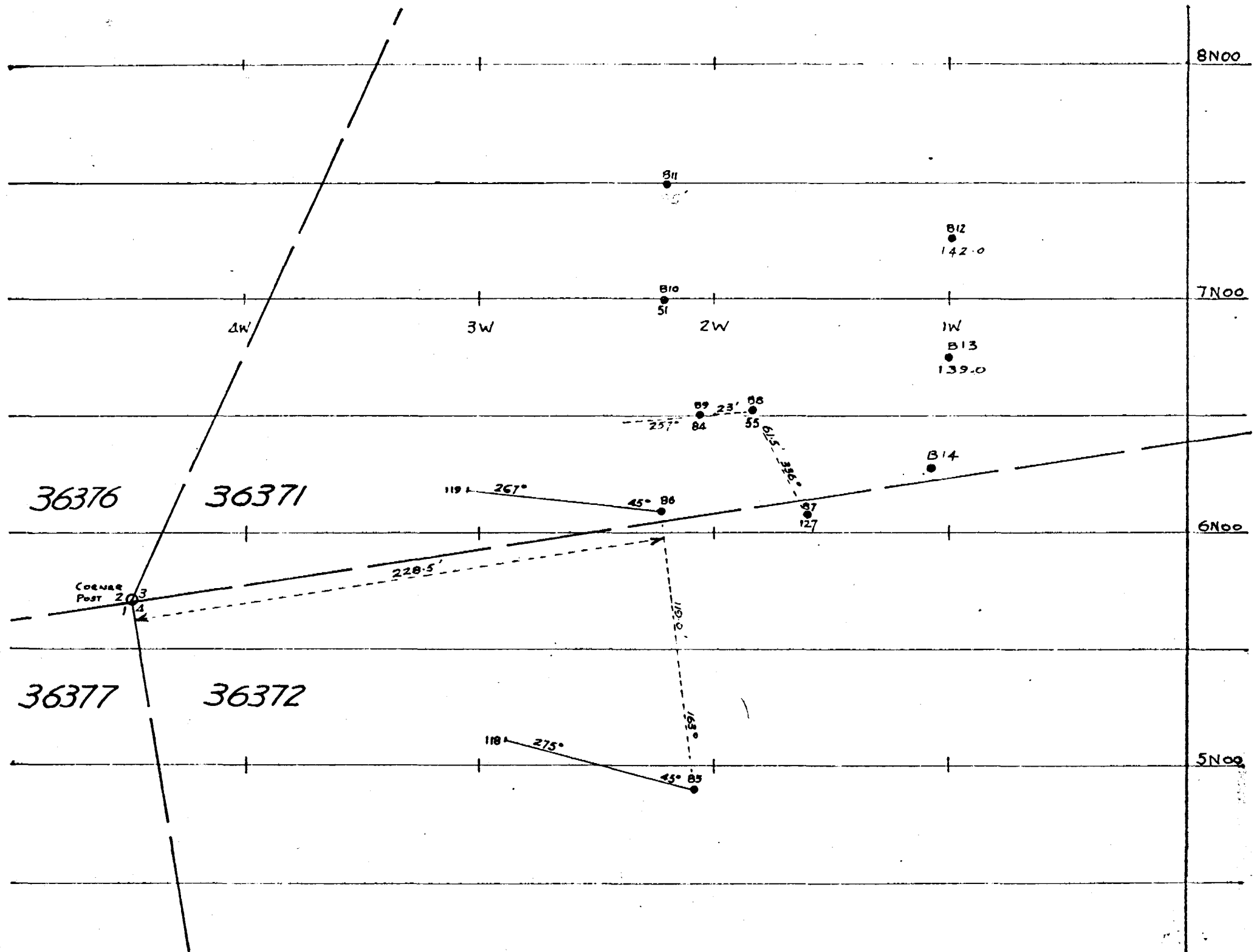
J.C. Baker
 MAY 1969



SCALE 1" = 50'

DIAMOND DRILL HOLES
B-ZONE

A. C. Parker
REXDALE MINES LTD
JUN. 10, 1969



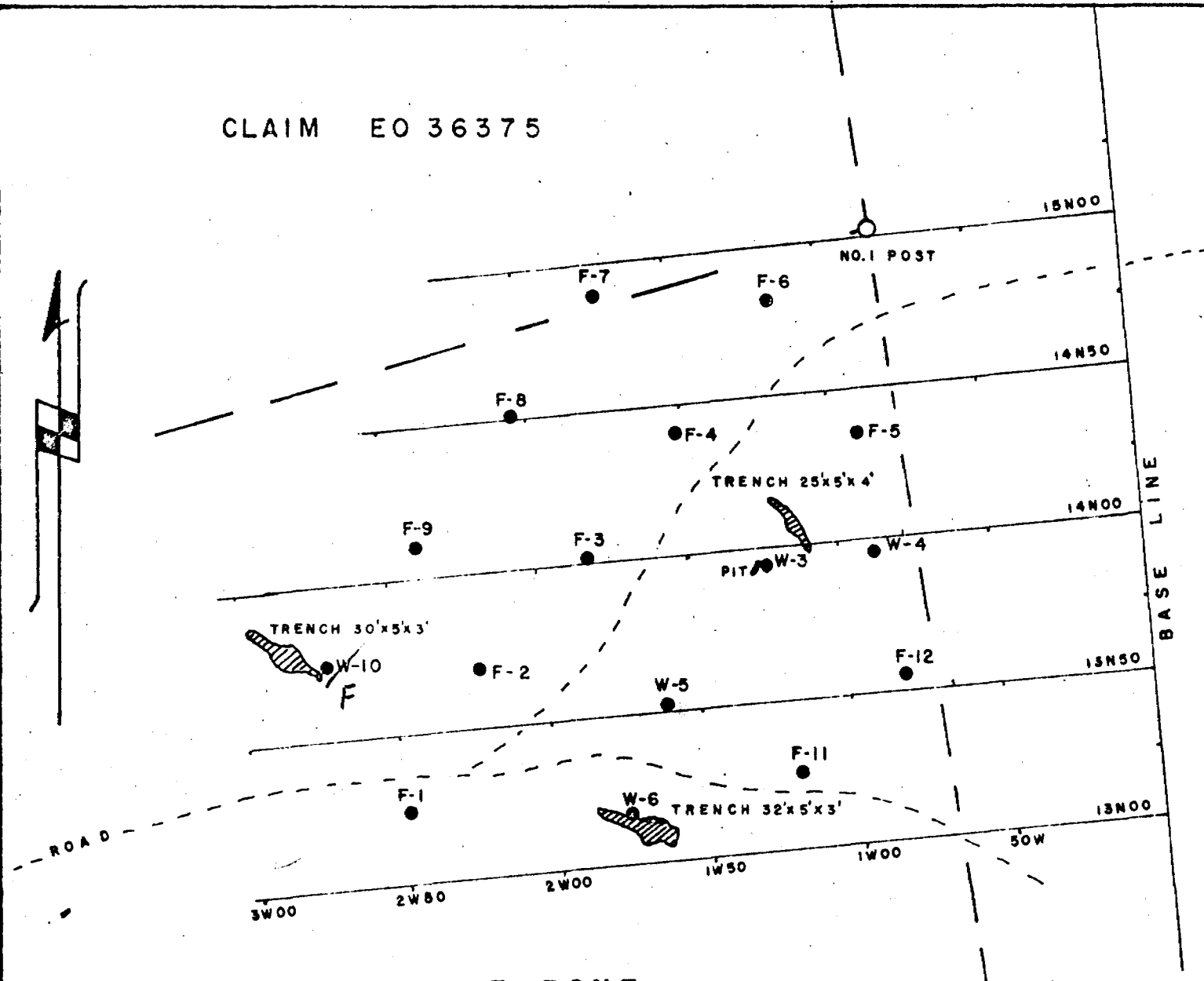
REXDALE MINES LIMITED
PALMERSTON TOWNSHIP.

DIAMOND DRILL HOLES

<u>A ZONE</u> E O 36375		<u>B ZONE</u>		<u>D ZONE</u> E O 36370		<u>F ZONE</u> E O 36375	
A-1	94'	W-2	6.0'	D-1	252.0' ✓	W-3	33.8' ✓
A-2	119'	B-1	84.0' ✓ 36372	D-2	124.0' ✓	W-4	29.6' ✓
A-3	104'	B-2	101.0' ✓	D-3	93.0' ✓	W-5	27.2' ✓
A-4	101'	B-3	102.0' ✓	D-4	164.0' ✓	W-6	88.4' ✓
A-5	101.6' ✓	B-4	107.0' ✓ 36372	W-1	68.5' ✓	F-1	102.0' ✓
A-6	120'	B-5	118.0' ✓			F-2	165.0' ✓
A-7	107.1' ✓	B-6	119.0' ✓ 36371			F-3	154.0' ✓
A-8	40'	B-7	126.0' ✓ 36372			F-4	107.0' ✓
A-9	102.8' ✓	B-8	55.0' ✓			F-5	113.0' ✓
		B-9	84.0' ✓			F-6	128.2' ✓
		B-10	51.0' ✓			F-7	433.0' ✓
		B-11	85.0' ✓ 36371			F-8	162.3' ✓
		B-12	142.0' ✓			F-9	163.7' ✓
		B-13	139.0' ✓			F-10	150.0' ✓
		B-14	163.0' ✓			F-11	112.0' ✓
						F-12	118.5' ✓

J. E. Baker

CLAIM EO 36375



F-ZONE
 REXDALE MINES LTD.
 PALMERSTON TWP.
 DIAMOND DRILL HOLE LOCATIONS
 TRENCHING

CLAIM EO 36376

*# 86/69 Palmerston Coy.
 Rexdale mine bed*

SCALE: 1" = 50'

J. C. Baker
 MAY - JULY 1997

DIAMOND DRILL RECORD

NAME OF PROPERTY Rexdale Mines Ltd. Palmerston Township
 HOLE A-2 LENGTH 119.0'
 LOCATION Claim 36375 - See Sketch
 LATITUDE _____ DEPARTURE _____
 ELEVATION _____ AZIMUTH _____ DIP Vertical
 STARTED July 4, 1969 FINISHED July 8, 1969

FOOTAGE	DIP	AZIMUTH	FOOTAGE	DIP	AZIMUTH

HOLE NO. A-2 SHEET NO. 1

REMARKS B-X Core

LOGGED BY J. C. BAKER

FOOTAGE		DESCRIPTION	SAMPLE				ASSAYS				
FROM	TO		NO.	SULPHIDES	FOOTAGE			%	%	OZ/TON	OZ/TON
					FROM	TO	TOTAL				
0.0	4.0	Casing									
4.0	10.0	Pegmatite. Coarse, light grey coloured. Scattered molybdenite flakes. Small cubic crystals, possible uraninite. Moderately radioactive to 5 times background.	10371		4.7	10.0	5.3				
			10372		12.5	15.5	3.0				
			10373		15.5	20.0	4.5				
10.0	12.5	Quartz biotite, phlogopite gneiss.	10374		20.0	25.0	5.0				
12.5	48.9	Pegmatite as previous. Colour changes to tan and brown. All radioactive with spot highs to plus 5 times background.	10375		25.0	30.0	5.0				
			10376		30.0	35.0	5.0				
48.9	51.0	Hornblende with scattered feldspar and quartz. Fine textured and gneissic.	10377		35.0	40.0	5.0				
51.0	59.5	Pegmatite, tan to brown colour. Still radioactive, slightly.									
59.5	94.5	Hornblende gneiss.									
94.5	112.0	Pegmatite. Coarse, red to pink. Slightly radioactive.									
112.0	119.0	Hornblende gneiss.									
END											

DIAMOND DRILL RECORD

NAME OF PROPERTY Rexdale Mines Ltd. Palmerston Township
 HOLE NO. A-3 LENGTH 104.0'
 LOCATION Claim 36375 - See Sketch.
 LATITUDE _____ DEPARTURE _____
 ELEVATION _____ AZIMUTH _____ DIP Vertical
 STARTED July 7, 1969 FINISHED July 10, 1969

FOOTAGE	DIP	AZIMUTH	FOOTAGE	DIP	AZIMUTH

HOLE NO. A-3 SHEET NO. 1

REMARKS B-X Core

LOGGED BY J. C. BAKER

FOOTAGE		DESCRIPTION	SAMPLE				ASSAYS				
FROM	TO		NO.	SULPHIDES	FOOTAGE			%	%	OZ/TON	OZ/TON
					FROM	TO	TOTAL				
0.0	5.8	Casing									
5.8	12.5	Quartz biotite gneiss. Fine quartzite.									
12.5	25.0	Pegmatite. White to grey with abundant biotite. Slightly radioactive.									
25.0	30.5	Quartz, biotite, hornblende gneiss.									
30.5	35.2	Crystalline limestone.									
35.2	40.0	White pegmatite with massive fine biotite. Some sections slightly radioactive.	10378		40.0	45.0	5.0				
40.0	59.5	Same as above with the exception of lenticular masses of biotite, that are radioactive to plus 4 times background.	10379		45.0	50.0	5.0				
59.5	104.0	Biotite gneiss grading to hornblende biotite gneiss. Latter mafic decreasing at depth. A few small pegmatite stringers.	10380		50.0	55.0	5.0				
END											

DIAMOND DRILL RECORD

NAME OF PROPERTY Rexdale Mines Limited Palmerston Township
 HOLE NO. A-5 LENGTH 101.6
 LOCATION Claim 36375 - See Sketch
 LATITUDE _____ DEPARTURE _____
 ELEVATION _____ AZIMUTH _____ DIP Vertical
 STARTED July 15, 1969 FINISHED July 19, 1969

FOOTAGE	DIP	AZIMUTH	FOOTAGE	DIP	AZIMUTH

HOLE NO. A-5 SHEET NO. 1

REMARKS B-X Core

LOGGED BY J. C. BAKER

FOOTAGE		DESCRIPTION	SAMPLE			ASSAYS			
FROM	TO		NO.	% SULPHIDES	FOOTAGE FROM TO TOTAL	%	%	OZ/TON	OZ/TON
0.0	48.1	Pegmatite. Light grey green to tan colour. All radioactive to plus 6 times background in first 5 feet. Small cubic uraninite crystals observed here; plus small brown elongated crystals. Unidentified. Footage 10 to 15 only slightly radioactive.	10383		0.0 5.0 5.0				
			10384		5.0 10.0 5.0				
			10385		15.0 20.0 5.0				
			10386		20.0 25.0 5.0				
			10387		25.0 30.0 5.0				
48.1	50.8	Hornblende, biotite gneiss with minute feldspar granules.	10388		30.0 35.0 5.0				
			10389		35.0 40.0 5.0				
50.8	55.7	Pegmatite. Coarse tan to red colour.							
55.7	56.7	Hornblende gneiss.							
56.7	57.3	Pegmatite. Coarse texture.							
57.3	91.0	Hornblende gneiss.							
91.0	101.6	Pegmatite - Coarse pink.							
		END							

DIAMOND DRILL RECORD

NAME OF PROPERTY Rexdale Mines Limited Palmerston Township
 HOLE NO. A-7 LENGTH 107.1'
 LOCATION Claim 36375 See Sketch
 LATITUDE _____ DEPARTURE _____
 ELEVATION _____ AZIMUTH _____ DIP Vertical
 STARTED July 24, 1969 FINISHED July 26, 1969

FOOTAGE	DIP	AZIMUTH	FOOTAGE	DIP	AZIMUTH

HOLE NO. A-7 SHEET NO. 1

REMARKS A-X Core

LOGGED BY J. C. BAKER

FOOTAGE		DESCRIPTION	SAMPLE			ASSAYS				
FROM	TO		NO.	SULPHIDES	FOOTAGE		%	%	OZ/TON	OZ/TON
					FROM	TO				
0.0	1.5	Casing.								
1.5	8.0	Pegmatite. White to grey-green. Small uraninite crystals in first one foot section. Radioactive to plus 8 times background.	10400		1.5	5.0	3.5			
8.0	8.7	Fine biotite section.	10401		5.0	11.8	6.8			
8.7	16.8	Pegmatite. Grey to pink and red. Slightly radioactive.								
16.8	17.5	Lost core.								
17.5	22.0	Hornblende gneiss. Coring at 70 degrees to core axis.								
22.0	26.2	Pegmatite. Coarse pink.								
26.2	35.1	Hornblende gneiss.								
35.1	38.2	Pegmatite.								
38.2	49.2	Hornblende gneiss.								
49.2	64.7	Pegmatite. Red. Medium coarse.								
64.7	107.1	Hornblende gneiss, with minor biotite and quartz granules.								
		END								

EM. 9-109

LANCASHIRE LIMITED

DIAMOND DRILL RECORD

NAME OF PROPERTY Rexdale Mines Limited Palmerston Township
 HOLE NO. A-8 LENGTH 40.0'
 LOCATION Claim 36375 See Sketch
 LATITUDE _____ DEPARTURE _____
 ELEVATION _____ AZIMUTH _____ DIP Vertical
 STARTED July 27, 1969 FINISHED July 29, 1969

FOOTAGE	DIP	AZIMUTH	FOOTAGE	DIP	AZIMUTH

HOLE NO. A-8 SHEET NO. 1

REMARKS B-X Core

LOGGED BY J. C. BAKER

FOOTAGE		DESCRIPTION	SAMPLE				ASSAYS				
FROM	TO		NO.	% SULPHIDES	FOOTAGE			%	%	OZ/TON	OZ/TON
					FROM	TO	TOTAL				
0.0	8.0	Casing.									
8.0	22.7	Crystalline limestone. White to grey-green. Coarse and fine sections with abundant phlogopite, sericite and coarse tremolite. Brecciation here. Possible fault zone.									
22.7	23.5	Lost core.									
23.5	27.7	Quartz, biotite, phlogopite gneiss.									
27.7	32.8	Pegmatite. Very coarse. Badly ground core.									
32.8	34.3	Sand seam									
34.3	35.6	Pegmatite. Coarse pink coloured.									
35.6	37.0	Seam									
37.0	40.0	Pegmatite; badly shattered and ground core. Some slightly radioactive sections.									
		END									
		Abandon hole.									

EM. 9-1106

LANRIDGE LIMITED,

DIAMOND DRILL RECORD

NAME OF PROPERTY Rexdale Mines Limited Palmerston Township
 HOLE NO. A-9 LENGTH 102.8'
 LOCATION Claim 36375 See Sketch
 LATITUDE _____ DEPARTURE _____
 ELEVATION _____ AZIMUTH _____ DIP Vertical
 STARTED July 30, 1969 FINISHED August 2, 1969

FOOTAGE	DIP	AZMUTH	FOOTAGE	DIP	AZMUTH

HOLE NO. A-9 SHEET NO. 1

REMARKS B-X Core

LOGGED BY J. C. BAKER

FOOTAGE		DESCRIPTION	SAMPLE			ASSAYS				
FROM	TO		NO.	% SULPHIDES	FOOTAGE		%	%	OZ/TON	OZ/TON
					FROM	TO				
0.0	10.6	Pegmatite; coarse white to green colour. Considerable ground core.								
10.6	16.1	Crystalline limestone; white with fine contacts.								
16.1	21.7	Admixture of crystalline limestone with tremolite and augite. Some fine quartz plus phlogopite.								
21.7	22.7	Ground core, lost.								
22.7	26.5	Ditto as footage 16 to 27 feet, but finer,								
26.5	40.2	Pegmatite. Exteme biotite, phlogopite content.								
40.2	41.2	Biotite, phlogopite gneiss.								
41.2	42.1	Lost core.								
42.1	48.3	Biotite phlogopite gneiss. Fine pyrite granules and stringers near end.								
48.3	49.4	Lost core.								
49.4	64.1	Pegmatite coarse.								
64.1	68.8	Quartz biotite, phlogopite gneiss; fine dense and contains some very fine feldspars.								
68.8	73.3	Pegmatite.								
73.3	85.0	Quartz biotite, phlogopite gneiss. Scattered fine hornblende near end.								
85.0	89.7	Pegmatite.								
89.7	102.8	Hornblende, biotite gneiss with biotite decreasing at depth. Two small pegmatite. stringers.								
END										

EM. 9-108

LAWSON & LIMITED

DIAMOND DRILL RECORD

NAME OF PROPERTY Rexdale Mines Limited Palmerston Township
 HOLE NO. B-1 LENGTH 84.0
 LOCATION See Sketch
 LATITUDE _____ DEPARTURE _____
 ELEVATION _____ AZIMUTH _____ DIP Vertical
 STARTED April 15, 1969 FINISHED April 17, 1969

FOOTAGE	DIP	AZIMUTH	FOOTAGE	DIP	AZIMUTH

HOLE NO. B-1 SHEET NO. 1

REMARKS B-X Core

LOGGED BY J. C. BAKER

J. C. Baker

FOOTAGE		DESCRIPTION	SAMPLE				U3O8% ASSAYS				
FROM	TO		NO.	% SULPHIDES	FOOTAGE			%	%	OZ/TON	OZ/TON
					FROM	TO	TOTAL				
0.0	9.0	Casing									
7.5	15.2	Fine gneissic quartzite contains minor pyrite, pyrrhotite and phlogopite. Coring at 55 degrees.									
15.2	22.8	Very coarse pegmatite with biotite and minor pyrite. Coarse garnets at 17.0 to 17.6.	3890		21.1	22.10	1.9	0.05			
22.8	49.8	Gneissic pegmatite. Wide zones; 1 to 2 inches of coarse biotite containing very large garnets, some sericite and minor splashes of pyrite. Coring at 40 to 50 degrees to axis.									
49.8	55.0	Medium to coarse pegmatite. Abundant biotite.									
55.0	57.6	Gneissic pegmatite with 25 percent biotite. Minor garnet and specks of pyrite.									
57.6	61.8	Metamorphic contact. Quartz, biotite, garnet, minor feldspar. Gradational to fine dark quartz and hornblende. Latter constitutes 50 percent. Possible old meta volcanic remnant. Schleiaren at 50 degrees to core axis.									
61.8	69.0	Medium to coarse white-grey crystalline limestone with small flakes of phlogopite. Coring at 45 to 50 degrees to core axis.									
69.0	71.2	Very coarse white feldspar and quartz.									
71.2	71.9	Crystalline limestone.									
71.9	73.4	Coarse white feldspar and quartz.									
73.4	74.8	Crystalline limestone.									
74.8	75.0	Fine gneissic contact of quartz, biotite, phlogopite and minor pyrite.									
75.0	84.0	Coarse - white to grey pegmatite grades to gneiss with bands of biotite and phlogopite containing thin pyrite plates.									

EM. B-118

LANARKIDGE LIMITED

DIAMOND DRILL RECORD

NO. OF PROPERTY Rexdale Mines Limited Palmerston Township
 HOLE NO. B-2 LENGTH 101.0'
 LOCATION See Sketch
 LATITUDE _____ DEPARTURE _____
 ELEVATION _____ AZIMUTH 120° DIP 60°
 STARTED April 17, 1969 FINISHED April 21, 1969

FOOTAGE	DIP	AZIMUTH	FOOTAGE	DIP	AZIMUTH

HOLE NO. B-2 SHEET NO. 1
 REMARKS B-X Core
 LOGGED BY J. C. BAKER

FOOTAGE		DESCRIPTION	SAMPLE				U3O8% ASSAYS			
FROM	TO		NO.	% SULPHIDES	FOOTAGE		%	%	OZ/TON	OZ/TON
					FROM	TO				
0.0	12.0	Casing.								
12.0	30.3	Fine grey quartzite, minor specks pyrite, pyrrhotite and small flakes biotite. Coring at 25 to 40 degrees.								
30.3	32.0	Contact metamorphic zone. Quartz chlorite material intermixed with minor hornblende and blebs of pyrite. White to purple flourite bands.								
32.0	33.0	Coarse grey pegmatite with specks pyrite. Contact 15 degrees to core axis.	3891		31.11	33.0	1.1	Trace		
33.0	41.2	Altered gneissic light grey pegmatite banded with 30 % biotite and phlogopite, containing abundant altered garnet. Odd small stringer calcite. Coring at 40 to 50 degrees.								
41.2	57.0	Highly altered pink pegmatite. Banded biotite, sericite and phlogopite containing massive altered garnets up to 4 inches in diameter. Coring at an average of 35 degrees.								
57.0	60.9	Schisted biotite and sericite with odd narrow stringer of feldspar and minor garnets. Coring at 15 to 20 degrees.								
60.9	72.4	Highly altered pegmatite grey to pink minor plagioclase. Wide bands of coarse biotite and sericite containing large garnets to 1½ inches. Coring at 25 to 45 degrees.	3892		66.0	68.0	2.0	0.01		
72.4	87.5	Hornblende, biotite schists, some fine quartz, phlogopite and sericite. Coring at 30 to 45 degrees.								
87.5	101.0	White to cream crystalline limestone with small flakes of phlogopite, odd narrow stringer of quartz and finely selicious at end. Coring at 30 to 45 degrees. Odd narrow ground sections.								
		Core recovery 100%								

EM, 9-1108

LANTORIDGE LIMITED

DIAMONDED DRILL RECORD

NAME OF PROPERTY Rexdale Mines Limited Palmerston Township
 HOLE NO. B-4 LENGTH 107.0'
 LOCATION See Sketch
 LATITUDE _____ DEPARTURE _____
 ELEVATION _____ AZIMUTH 290° DIP 45°
 STARTED May 10, 1969 FINISHED May 15, 1969

FOOTAGE	DIP	AZIMUTH	FOOTAGE	DIP	AZIMUTH

HOLE NO. B-4 SHEET NO. 1

REMARKS B-X Core

LOGGED BY J. C. BAKER

FOOTAGE	DESCRIPTION	SAMPLE				ASSAYS				
		NO.	% SULPHIDES	FOOTAGE FROM	FOOTAGE TO	FOOTAGE TOTAL	%	%	OZ/TON	OZ/TON
0.0	12.0									
12.0	30.7									
30.7	34.2									
34.2	36.5									
36.5	37.0									
37.0	38.5									
38.5	38.7									
38.7	64.8									
64.8	99.0									
99.0	107.0									

EM. 6-1168

LANGRIDGE LIMITED,

END

DIAMOND DRILL RECORD

NAME OF PROPERTY Rexdale Mines Limited Palmerston Township
 HOLE NO. B-5 LENGTH 118.0'
 LOCATION See sketch
 LATITUDE _____ DEPARTURE _____
 ELEVATION _____ AZIMUTH 275° DIP 45°
 STARTED May 16, 1969 FINISHED May 21, 1969

FOOTAGE	DIP	AZIMUTH	FOOTAGE	DIP	AZIMUTH

HOLE NO. B-5 SHEET NO. 1

REMARKS B-X Core

LOGGED BY J. C. BAKER

FOOTAGE		DESCRIPTION	SAMPLE				ASSAYS			
FROM	TO		NO.	% SULPHIDES	FOOTAGE		%	%	OZ/TON	OZ/TON
					FROM	TO				
0.0	15.0	Casing.								
15.0	19.3	Pegmatite. Coarse, light grey green with limited biotite. Radioactivity one count per second above background.								
19.3	30.4	Biotite schist containing garnets to bean size. Very small pegmatite bands widely dispersed.								
30.4	31.8	Calcite; coarse, cream coloured.								
31.8	36.0	Biotite schist with garnets, and small intermittent bands of pegmatite.								
36.0	37.6	Lost core.								
37.6	38.3	Biotite schist as previous two sections.								
38.3	39.3	Lost core.								
39.3	118.0	Biotite, sericite schist, with very small and widely scattered pegmatite stringers. One larger band at 85.7' to 87.0' and 116.2 to 116.9. Very fine aphanitic grey quartz at 107.0' to 108.6' and 112.0' to 113.0'. Varied bedding. Acute angles 30 to 40 degrees at pegmatite intrusives. Generally 70 degrees to core axis. Flattening at end of hole. End - 3 feet of lost core. Recovery - 97%.								

EM. 6-1168

LANGRIDGE LIMITED,

DIAMOND DRILL RECORD

NAME OF PROPERTY Rexdale Mines Limited Palmerston Township
 HOLE NO. B-6 LENGTH 119.0'
 LOCATION See Sketch
 LATITUDE _____ DEPARTURE _____
 ELEVATION _____ AZIMUTH 267° DIP 45°
 STARTED May 22, 1969 FINISHED May 26, 1969

FOOTAGE	DIP	AZIMUTH	FOOTAGE	DIP	AZIMUTH

HOLE NO. B-6 SHEET NO. 1

REMARKS B-X Core

LOGGED BY J. C. BAKER

J. C. Baker

FOOTAGE	DESCRIPTION	SAMPLE			ASSAYS					
		NO.	% SULPHIDES	FOOTAGE	FOOTAGE	%	%	OZ/TON	OZ/TON	
FROM	TO			FROM	TO	TOTAL				
0.0	14.0									
14.0	81.0	0417		32.1	35.0	2.9				
		0418		35.0	37.5	2.5				
		0419		37.5	40.0	2.5				
		0420		40.0	42.6	2.6				
31.0	32.1									
32.1	42.6									
42.6	104.6									
104.6	119.0									

End - Core recovery good.

EM. 6-1168

LANGRIDGE LIMITED.

DIAMOND DRILL RECORD

NAME OF PROPERTY Rexdale Mines Limited Palmerston Township
 HOLE NO. B-7 LENGTH 126.0
 LOCATION See Sketch
 LATITUDE _____ DEPARTURE _____
 ELEVATION _____ AZIMUTH _____ DIP Vertical
 STARTED May 27, 1969 FINISHED June 2, 1969.

FOOTAGE	DIP	AZIMUTH	FOOTAGE	DIP	AZIMUTH

HOLE NO. B-7 SHEET NO. 1

REMARKS B-X Core

LOGGED BY J. C. BAKER

EM. 8-1168

LANGRIDGE LIMITED,

FOOTAGE		DESCRIPTION	SAMPLE				ASSAYS				
FROM	TO		NO.	% SULPHIDES	FOOTAGE			%	%	OZ/TON	OZ/TON
					FROM	TO	TOTAL				
0.0	4.0	Casing.									
4.0	12.8	Pegmatite. Coarse grey. Slightly radioactive.									
12.8	16.8	Quartz biotite schist with small pegmatite stringers.									
16.8	17.6	Ground lost core.									
17.6	18.7	Pegmatite with biotite schist.									
18.7	19.2	Lost core.									
19.2	21.7	Quartz biotite schist with small pegmatite stringers. Coring at 70 degrees to core axis.									
21.7	22.3	Lost core.									
22.3	24.5	Quartz biotite schist with pegmatite stringers.									
24.5	26.6	Pegmatite grey.									
26.6	28.0	Fine quartz biotite schist. Coring at 70 degrees.									
28.0	33.0	Pegmatite grey to pink									
33.0	35.2	Quartz biotite schist.									
35.2	36.2	Pegmatite.									
36.2	48.8	Quartz biotite schist. Coring at 60 degrees.									
48.8	52.0	Pegmatite, coarse, white to grey coloured.									
52.0	56.7	Quartz biotite schist.									
56.7	58.3	Pegmatite, white.									
58.3	84.2	Quartz biotite schist coring at 60 degrees.									
84.2	86.3	White crystalline limestone.	0438		86.3	90.0	3.7				
86.3	95.8	Pegmatite with banded biotite and garnet sections. Radioactive to 6 times background.	0439		90.0	92.7	2.7				
			0440		92.7	95.8	3.1				
95.8	97.2	White crystalline limestone.									
97.2	126.0	Biotite sericite schist with small pegmatite stringers. Biotite content increases with depth pegmatite decreasing.									

END Very blocky with seams.

DIAMOND DRILL RECORD

NAME OF PROPERTY Rexdale Mines Limited Palmerston Township
 HOLE NO. B-8 LENGTH 55.0
 LOCATION See Sketch
 LATITUDE _____ DEPARTURE _____
 ELEVATION _____ AZIMUTH _____ DIP Vertical
 STARTED May 30, 1969 FINISHED June 2, 1969

FOOTAGE	DIP	AZIMUTH	FOOTAGE	DIP	AZIMUTH

MOLE NO. B-8 SHEET NO. 1

REMARKS B-X Core
Hole abandoned. Too blocky with caves etc.

LOGGED BY J. C. BAKER

FOOTAGE		DESCRIPTION	SAMPLE				ASSAYS				
FROM	TO		NO.	% SULPHIDES	FOOTAGE			%	%	OZ/TON	OZ/TON
					FROM	TO	TOTAL				
0.0	3.0	Casing.									
3.0	7.0	Quartz biotite schist. 2 feet lost core here at small intervals.									
7.0	16.3	Pegmatite with bands of quartz biotite schist.									
16.3	18.0	Quartz biotite schist. Lost core 17.3 to 18.0.									
18.0	19.6	Pegmatite - grey.									
19.6	20.9	Quartz biotite schist.									
20.9	26.1	Pegmatite. Medium coarse and light coloured.									
26.1	26.7	Quartz biotite schist.									
26.7	27.6	Lost core.									
27.6	28.5	Pegmatite.									
28.5	30.0	Quartz biotite schist.									
30.0	33.0	Ground core.									
33.0	41.0	Quartz biotite schist. One pegmatite stringer.									
41.0	43.0	Pegmatite, grey.									
43.0	52.6	Quartz biotite schist.									
52.6	54.0	Lost core.									
54.0	55.0	Quartz biotite schist.									
		END.									

EM. 6-1168

LANGRIDGE LIMITED.

DIAMOND DRILL RECORD

NAME OF PROPERTY Rexdale Mines Limited Palmerston Township
 HOLE NO. B-9 LENGTH 84.0
 LOCATION See Sketch
 LATITUDE _____ DEPARTURE _____
 ELEVATION _____ AZIMUTH _____ DIP Vertical
 STARTED June 3, 1969 FINISHED June 5, 1969

FOOTAGE	DIP	AZIMUTH	FOOTAGE	DIP	AZIMUTH

HOLE NO. B-9 SHEET NO. 1

REMARKS B-X Core

LOGGED BY J. C. BAKER

FOOTAGE		DESCRIPTION	SAMPLE			ASSAYS					
FROM	TO		NO.	% SULPHIDES	FOOTAGE			%	%	OZ/TON	OZ/TON
					FROM	TO	TOTAL				
0.0	5.0	Casing.									
5.0	8.1	Pegmatite, Coarse grey to tan.									
8.1	8.8	Quartz biotite gneiss and schist with small graphite flakes throughout. Coring at 65 degrees to core axis.									
8.8	11.8	Pegmatite. Coarse, grey to tan coloured.									
11.8	18.3	Quartz biotite gneiss to schist, with small graphite flakes throughout. Lost core - 13.5 to 14.3 16.2 to 17.0									
18.3	20.9	Pegmatite. White to grey.									
20.9	21.5	Quartz biotite as previous.									
21.5	22.5	Lost core									
22.5	25.8	Quartz biotite as previous. These are impure quartzites with varying amounts of biotite.									
25.8	27.8	Pegmatite. White to pink and coarse.									
27.8	63.1	Quartz biotite gneiss to schist exactly as previous sections. Extremely fine at end.									
63.1	65.2	Crystalline limestone. White altering to grey-green with altered feldspars at end.									
65.2	72.2	Pegmatite. White to grey green with coarse biotite and muscovite Radioactive to 4 times background.	10301		65.0	70.0	5.0				
72.2	84.0	Coarse biotite muscovite, garnet gneiss with decreasing pegmatite dikelets and stringers.	10302		70.0	72.5	2.5				
		END. Blocky ground.									

EM. 6-1168

LANGRIDGE LIMITED,

DIAMOND DRILL RECORD

NAME OF PROPERTY Rexdale Mines Limited Palmerston Township
 HOLE NO. B-10 LENGTH 51.0
 LOCATION See Sketch
 LATITUDE _____ DEPARTURE _____
 ELEVATION _____ AZIMUTH _____ DIP Vertical
 STARTED June 5, 1969 FINISHED June 8, 1969

FOOTAGE	DIP	AZIMUTH	FOOTAGE	DIP	AZIMUTH

HOLE NO. B-10 SHEET NO. 1

REMARKS B-X Core

LOGGED BY J. C. BAKER

FOOTAGE		DESCRIPTION	SAMPLE				ASSAYS				
FROM	TO		NO.	% SULPHIDES	FOOTAGE		%	%	OZ/TON	OZ/TON	
				FROM	TO	TOTAL					
0.0	9.0	Casing									
9.0	23.0	Quartzite impure. Coring at 45 degrees to core axis.									
23.0	24.2	Crystalline limestone.									
24.2	36.0	Pegmatite. Banded at start. Slightly radioactive.									
36.0	51.0	Biotite, sericite gneiss with pegmatite stringers.									
		END									

B.M. 9-1108

LAURENCE LIMITED,

DIAMOND DRILL RECORD

NAME OF PROPERTY Rexdale Mines Limited-Palmerston Township
 HOLE NO. B-11 LENGTH 85.0'
 LOCATION See Sketch
 LATITUDE _____ DEPARTURE _____
 ELEVATION _____ AZIMUTH _____ DIP Vertical
 STARTED June 9, 1969 FINISHED June 11, 1969.

FOOTAGE	DIP	AZIMUTH	FOOTAGE	DIP	AZIMUTH

HOLE NO. B-11 SHEET NO. 1
 REMARKS B-X Core
 LOGGED BY J. C. BAKER

FOOTAGE		DESCRIPTION	SAMPLE				ASSAYS				
FROM	TO		NO.	% SULPHIDES	FOOTAGE		%	%	OZ/TON	OZ/TON	
					FROM	TO	TOTAL				
0.0	15.0	Casing.									
15.0	20.0	Quartzite plus few small sections of crystalline limestone.									
20.0	26.6	Biotite garnet gneiss with small pegmatite dikes.									
26.6	35.0	Pegmatite with garnet and small gneiss sections. Slightly radioactive.									
35.	85.0	Biotite sericite gneiss with small pegmatite stringers. Coring varies 40 to 60 degrees.									
		END									

EM. 8-1198

LANSHIRE LIMITED

DIAMOND DRILL RECORD

NAME OF PROPERTY Rexdale Mines Limited Palmerston Township
 HOLE NO. B-12 LENGTH 142.0'
 LOCATION See Sketch
 LATITUDE _____ DEPARTURE _____
 ELEVATION _____ AZIMUTH _____ DIP Vertical
 STARTED June 12, 1969 FINISHED June 15, 1969

FOOTAGE	DIP	AZMUTH	FOOTAGE	DIP	AZMUTH

HOLE NO. B-12 SHEET NO. 1
 REMARKS B-X Core
 LOGGED BY J. C. BAKER

FOOTAGE		DESCRIPTION	SAMPLE			ASSAYS					
FROM	TO		NO.	% SULPHIDES	FOOTAGE		%	%	OZ/TON	OZ/TON	
					FROM	TO	TOTAL				
0.0	7.0	Casing.									
7.0	8.4	Crystalline limestone.									
8.4	12.0	Pegmatite. Pale coloured, coarse.									
12.0	22.5	Crystalline limestone, white with impurities.									
22.5	24.5	Quartz biotite schist to gneiss with graphite scattered throughout.									
24.5	40.6	Pegmatite. Tan to grey-green. Small section of biotite gneiss at 39.0 to 39.7. Very weakly radioactive with odd spot recording plus 1 above background.									
40.6	61.7	Quartz-biotite schist containing fine pyrite and graphite flakes. Small pegmatite dikes to 6 inches wide. Coring at 70 degrees.									
61.7	104.6	Quartzite as above with a few very small crystalline limestone sections.									
104.6	106.3	Crystalline limestone									
106.3	115.0	Pegmatite; medium coarse with muscovite; increasing biotite and a few garnets. Radioactive to plus 3 times background for uranium, thorium at one spot.	10318		106.5	110.0	3.5				
			10319		110.0	115.0	5.0				
115.0	120.0	Gneissic pegmatite with excessive biotite and garnet concentrations to bean size. Very weakly radioactive to 1 count per second above background at scattered spots.									
120.0	142.0	Biotite, muscovite and sericite gneiss with very small bands of pegmatite. Coring at 70 to 80 degrees to core axis.									
END											

EM. 8-1198

LAWRENCE LIMITED

DIAMOND DRILL RECORD

NAME OF PROPERTY _____
 HOLE NO. B-13 LENGTH _____
 LOCATION _____
 LATITUDE _____ DEPARTURE _____
 ELEVATION _____ AZIMUTH _____ DIP _____
 STARTED _____ FINISHED _____

FOOTAGE	DIP	AZIMUTH	FOOTAGE	DIP	AZIMUTH

HOLE NO. B-13 SHEET NO. 2

REMARKS _____

LOGGED BY J. E. Pappas

FOOTAGE		DESCRIPTION	SAMPLE			ASSAYS					
FROM	TO		NO.	SULPHIDES	FOOTAGE			%	%	OZ/TON	OZ/TON
					FROM	TO	TOTAL				
112.5	128.6	Pegmatite with increasing biotite, muscovite and scattered garnets. Slightly radioactive from 112.0 to 120.0. Biotite muscovite gneiss with pegmatite stringers.	10329		112.5	115.0	2.5				
128.6	139.0		10330		117.8	122.2	4.4				
		END									

DIAMOND DRILL RECORD

NAME OF PROPERTY Rexdale Mines Limited Palmerston Township
 HOLE NO. W-3 LENGTH 33.8'
 LOCATION See Sketch
 LATITUDE _____ DEPARTURE _____
 ELEVATION _____ AZIMUTH _____ DIP Vertical
 STARTED April 21, 1969 FINISHED April 23, 1969

FOOTAGE	DIP	AZIMUTH	FOOTAGE	DIP	AZIMUTH

HOLE NO. W-3 SHEET NO. 1

REMARKS B-X Core
 Logged in feet and inches.

LOGGED BY J. C. BAKER

FOOTAGE		DESCRIPTION	SAMPLE			ASSAYS					
FROM	TO		NO.	% SULPHIDES	FOOTAGE		%	%	OZ/TON	OZ/TON	
					FROM	TO	TOTAL				
0.0	17.2	Fairly coarse grey - green to pink pegmatite containing coarse biotite flakes, minor hornblende, sparse plagioclase and rare specks of pyrite. Uranium oxides and a few tiny uraninite crystals at 1.6' and at 5.4'. Thorium count very low. 1 to 2 C. P. S. average.	3899		0.0	2.6	2.6				
			3900		2.6	5.6	3.0				
			0051		5.6	10.0	4.6				
			0052		10.0	13.0	3.0				
			0053		13.0	15.0	2.0				
			0054		15.0	17.3	2.3				
17.2	22.7	Quartz - biotite phlogopite gneiss and schist with quartz stringer small, and erratic pyrite blebs. Contact at 42 degrees. General coring at 75 to 80 degrees to core axis.									
22.7	27.3	Medium textured grey - green pegmatite with biotite flakes - zonal and narrow. Extremely siliceous. Abundant pyrite in stringers and blebs.									
27.3	33.8	Quartz phlogopite; minor biotite schist. Very fine. Quartz as small as grains with odd coarse stringer. Abundant small stringers of pyrite and pyrrhotite. Impure quartzite. Coring at 75 to 80 degrees to core axis. Odd zone at 45°. Core recovery at 98%.									

L.M.S. 11115

LANARQUE LIMITED

DIAMOND DRILL RECORD

NAME OF PROPERTY Rexdale Mines Limited Palmerston Township.

NO. W-4 LENGTH 29.6

LOCATION Line 14NOO at 85' west & 2'. 6 South - See Sketch

LATITUDE _____ DEPARTURE _____

ELEVATION _____ AZIMUTH _____ DIP Vertical

STARTED April 24/69 FINISHED April 30/69

FOOTAGE	DIP	AZIMUTH	FOOTAGE	DIP	AZIMUTH

HOLE NO. W-4 SHEET NO. 1

REMARKS B-X Core. Logged in feet and inches.

LOGGED BY J. C. BAKER

FOOTAGE		DESCRIPTION	SAMPLE			ASSAYS				
FROM	TO		NO.	% SULPHIDES	FOOTAGE		U ₃ O ₈			
				FROM	TO	TOTAL	%	%	OZ/TON	OZ/TON
0.0	13.9	Coarse pegmatite grey-green to pin. Abundant biotite in large flakes. First two feet rusty. Minor sericite. Minor yellow uranium oxides at 1.0' to 2'. 3 and 6.6 feet. These in the close proximity to the biotite.	0057		0.0	3'.0	3'.0	0.04		
			0058		3.0	6.0	3.0	Trace		
			0059		6.0	10.0	4.0	Trace		
			0060		10.0	12.0	2.0	Trace		
			0061		12.0	13.10	1.10	0.02		
13.9	15.2	Quartz-biotite, phlogopite schist. Abundant pyrite stringers and blebs. Impure quartzite. Coring at 80 degrees.								
15.2	26.6	Medium to coarse textured grey-green to pink pegmatite with scattered biotite concentrations. A few fine pyrite stringers and tiny specks of magnetite. Sericite as small flakes.	0062		15.6	20.0	4.6	Trace		
26.6	29.6	Quartz biotite phlogopite schist contains pyrite in specks and small stringers.	0068		25.0	26.3	1.3	0.03		
		End Core recovery 98%. Minor grinding.								

EM. 6-1188

LANGRIDGE LIMITED.

DIAMOND DRILL RECORD

NO. OF PROPERTY Rexdale Mines Ltd. Palmerston Township
 HOLE NO. W-5 LENGTH 27.2
 LOCATION Line 13N50 - 3 feet south STN. 1W60 See Sketch
 LATITUDE _____ DEPARTURE _____
 ELEVATION _____ AZIMUTH _____ DIP Vertical
 STARTED May 2/69 FINISHED May 6/69

FOOTAGE	DIP	AZIMUTH	FOOTAGE	DIP	AZIMUTH

HOLE NO. W-5 SHEET NO. 1
 REMARKS B-X Core to 4'. 3
A-X Core to end.
Logged in tenths.
 LOGGED BY J. C. BAKER

FOOTAGE		DESCRIPTION	SAMPLE				ASSAYS				
FROM	TO		NO.	SULPHIDES	FOOTAGE		U ₃ O ₈	ThO ₂	oz/TON	oz/TON	
					FROM	TO	TOTAL	%	%		
0.0	14.8	Pegmatite - Medium to coarse textured at start gradually becoming finer. Grey-green to pink and brown coloured. Biotite decreasing to nil at 14'. 0. White plagioclase content minor. Abundant small stringers of pyrite throughout. Tiny, limited uraninite cubes in vicinity. 9'. 0.	0069		0.0	2.5	2'. 5	0.08			
			0070		2.5	4.3	1'. 7	0.03			
			0071		4.3	7.5	3'. 2	0.02			
			0072		7.5	10.0	2'. 5	0.22	<i>c.c2</i>		
			0073		10.0	12.5	2'. 5	0.13	<i>0.02</i>		
14.8	18.2	Fine granular quartz, phlogpite schist. Minor sericite. Very abundant; fine pyrite. Coring at 80 degrees to core axis.									
18.2	23.8		Admixture of calcite and acmite in long fibrous masses and bright green striated crystals. Small sections of coarse white calcite at 19.0 feet and 22.5 feet. Minor pyrite and pyrrhotite. Few flakes of molybdenite at 22.5.								
23.8	27.2	Very fine granular quartz - phlogpite schist scattered pyrite throughout.									
		End. Core recovery 96 percent. Minor grinding.									

EM. 6-1168

LANGRIDGE LIMITED.

DIAMOND DRILL RECORD

NAME OF PROPERTY Rexdale Mines Limited Palmerston Township
 HOLE NO. W-6 LENGTH 88.4'
 LOCATION See Sketch
 LATITUDE _____ DEPARTURE _____
 ELEVATION _____ AZIMUTH _____ DIP Vertical
 STARTED May 6, 1969 FINISHED May 12-1969.

FOOTAGE	DIP	AZIMUTH	FOOTAGE	DIP	AZIMUTH

HOLE NO. W-6 SHEET NO. 1

REMARKS A-X Core

LOGGED BY J. C. BAKER

FOOTAGE		DESCRIPTION	SAMPLE				ASSAYS				
FROM	TO		NO.	% SULPHIDES	FOOTAGE			%	%	OZ/TON	OZ/TON
					FROM	TO	TOTAL				
0.0	63.6	Pegmatite. Medium to coarse textured. Grey-green through pink to red in colour. Orthoclase and plagioclase feldspars. Excessive biotite as large flakes and masses of fine flakes to 7 inches wide. Minor scattered blebs of pyrite, rare pyrrhotite and the odd flake of molybdenite. Scattered small garnets at 5, 8 feet to 6.0 feet. All moderately radioactive with small zonal spot highs. Thorium very low to nil. A few angular blebs of uraninite at 31.5 feet. Ground core at 27.3 to 28.0 feet. Cave and lost core at 42.0 to 43.5 feet.	0079		0.0	2.0	2.0				
			0086		2.0	3.4	1.4				
			0078		3.4	5.0	1.6				
			0087		5.0	10.0	5.0				
			0088		10.0	15.0	5.0				
			0075		15.0	17.5	2.5				
			0076		17.5	19.7	2.2				
			0089		20.0	25.0	5.0				
			0090		25.0	30.0	5.0				
			0077		31.1	32.7	1.6				
63.6	70.7	Biotite schists with parallel bands of pink pegmatite. Biotite increasing with depth.	0091		32.7	35.0	2.3				
70.7	76.0		0092		35.0	40.0	5.0				
		Banded biotite schists with abundant sericite. Thin pegmatite bands at 20 degrees to core axis.	0080		40.0	42.0	2.0				
76.0	88.4		0093		43.5	45.0	1.5				
		Pegmatite, pink to red. Biotite content decreasing.	0081		45.0	48.4	3.4				
			0094		48.4	52.0	3.6				
			0095		52.0	55.0	3.0				
			0082		55.0	57.4	2.4				
			0096		57.4	60.0	2.6				
			0097		60.0	65.0	5.0				
			0098		65.0	70.7	5.7				
			0099		76.0	80.0	4.0				
			0100		80.0	85.0	5.0				
			0401		85.0	88.4	3.4				
		END									

EM. 6-1188

LANGRIDGE LIMITED,

DIAMOND DRILL RECORD

NAME OF PROPERTY Rexdale Mines Limited Palmerston Township
 HOLE NO. F-1 LENGTH 102.0'
 LOCATION See Sketch
 LATITUDE _____ DEPARTURE _____
 ELEVATION _____ AZIMUTH _____ DIP Vertical
 STARTED May 12, 1969 FINISHED May 14, 1969

FOOTAGE	DIP	AZIMUTH	FOOTAGE	DIP	AZIMUTH

HOLE NO. F-1 SHEET NO. 1

REMARKS B-X Core

LOGGED BY J. C. BAKER

FOOTAGE		DESCRIPTION	SAMPLE			ASSAYS			
FROM	TO		NO.	% SULPHIDES	FOOTAGE FROM TO TOTAL	%	%	OZ/TON	OZ/TON
0.0	2.5	Casing.							
2.5	45.0	Pegmatite. Medium to coarse textured. Grey to pink and tan coloured. Very abundant biotite. Low radioactivity at 1 to 2 counts per second above a background of 2 C. P. S. . Small localized spot highs of 2 to 4 C. P. S. above background.	0084		16.3 18.3 2.0				
			0083		31.3 34.4 3.1				
			0085		80.0 82.5 2.5				
45.0	51.8	Biotite schists. Small stringers and bands of quartz and pegmatite at 80 degrees to core axis.							
51.8	102.0	Pegmatite. Medium to coarse textured. Light grey to pink coloured. Biotite content decreasing with depth. Ground Core 62.8 to 63.6 Lost core 82.5 to 83.7 86.6 to 87.6 97.4 to 98.1 3.7 feet of lost core. Hole in close proximity to a cliff and major fault. END (96 percent core recovery.)							

EM. 9-1108

LAWRENCE LIMITED

DIAMOND DRILL RECORD

NAME OF PROPERTY Rexdale Mines Ltd. Palmerston Township
 HOLE NO. F-2 LENGTH 165.0'
 LOCATION See Sketch
 LATITUDE _____ DEPARTURE _____
 ELEVATION _____ AZIMUTH _____ DIP Vertical
 STARTED May 15, 1969 FINISHED May 21, 1969

FOOTAGE	DIP	AZIMUTH	FOOTAGE	DIP	AZIMUTH

HOLE NO. F-2 SHEET NO. 1

REMARKS B-X Core

LOGGED BY J. C. BAKER

FOOTAGE		DESCRIPTION	SAMPLE				ASSAYS				
FROM	TO		NO.	% SULPHIDES	FOOTAGE			%	%	OZ/TON	OZ/TON
					FROM	TO	TOTAL				
0.0	3.0	Casing.	0402		3.0	5.0	2.0				
3.0	50.9	Pegmatite. Medium coarse textured. White to grey-green and tan coloured. High silica content with limited biotite, minor pyrite in blebs and stringers. Odd molybdenite flake. Plagioclase white to green. All mildly radioactive for uranium-thorium. Latter extremely low. Finer pegmatite from 3.0 to 13.0' slightly above double back ground count.	0403		5.0	10.0	5.0				
			0404		10.0	13.5	3.5				
			0405		20.0	25.0	5.0				
			0406		30.0	32.5	2.5				
			0407		32.5	35.0	2.5				
			0408		35.5	38.0	2.5				
			0410		38.0	42.1	4.1				
			0411		42.1	46.0	3.9				
			0412		46.0	50.9	4.9				
50.9	52.6	Quartz phlogopite schist. Extremely fine white feldspars. Coring at 60 to 65 degrees.									
52.6	53.8	Dense cream coloured mixture aphanitic quartz and carbonate.									
53.8	58.3	Quartz phlogopite schist. Metamorphosed. Small calcite bands and minor altered hornblende.									
58.3	59.0	Calcite, coarse.									
59.0	59.7	Biotite garnet schist.									
59.7	60.5	Pegmatite. Coarse grey-green and lacking in biotite. Not radioactive.									
60.5	66.9	Biotite garnet schist with small bands pegmatite. Garnets to bean size. Biotite constitutes 40 to 50 percent. Coring at 80 degrees to core axis.									
66.9	71.2	Pegmatite, grey-green with bands of coarse biotite -- slightly radioactive.	0413		66.9	71.2	4.3				
			0414		80.0	82.5	2.5				
			0415		82.5	86.2	3.7				

EM. 6-1168

LANGRIDGE LIMITED.

DIAMOND DRILL RECORD

NAME OF PROPERTY Rexdale Mines Limited Palmerston Township
 HOLE NO. F-2 LENGTH 165.0'
 LOCATION _____
 LATITUDE _____ DEPARTURE _____
 ELEVATION _____ AZIMUTH _____ DIP _____
 STARTED _____ FINISHED _____

FOOTAGE	DIP	AZIMUTH	FOOTAGE	DIP	AZIMUTH

HOLE NO. F-2 SHEET NO. 2

REMARKS B-X Core

LOGGED BY [Signature]

EM. 6-1188

LANGRIDGE LIMITED,

FOOTAGE		DESCRIPTION	SAMPLE				ASSAYS				
FROM	TO		NO.	% SULPHIDES	FOOTAGE			%	%	OZ/TON	OZ/TON
					FROM	TO	TOTAL				
71.2	86.2	Intermittently banded biotite and grey-green pegmatite. Radioactivity builds up slowly from 80.0 feet to triple back ground. Brown feldspars 80.1 to 86.2 with excessive biotite. Biotite schist; compact and dense. Red feldspar particles and small bands of same near end. Pegmatite. Coarse grey-green to tan coloured. Biotite minor constituent. Last four feet slightly radioactive. Hornblende biotite schist, latter sparse. Fine quartz particles and very fine feldspar. Small bands or stringers of pegmatite from 119.0 to 124.0 feet. Coring at 65 to 80 degrees. Texture - gradational fine to medium, to fine at end. Admixture of fine cream coloured quartz and carbonate with numerous vugs containing calcite or quartz crystals, minor pyrite crystals and fine founded quartz particles. Hornblende schist as previous section at 108.0 to 147. Pegmatitic material last 8 inches. End Core recovery 99 percent. Ground core at 35.0 - 35.8.	0416								
86.2	99.7										
99.7	108.9										
108.9	147.8				105.0	108.9	3.9				
147.8	156.5										
156.5	165.0										

DIAMOND DRILL RECORD

NAME OF PROPERTY Rexdale Mines Limited Palmerston Township
 HOLE NO. F-3 LENGTH 154.0'
 LOCATION See Sketch
 LATITUDE _____ DEPARTURE _____
 ELEVATION _____ AZIMUTH _____ DIP Vertical
 STARTED May 22, 1969 FINISHED May 27, 1969

FOOTAGE	DIP	AZIMUTH	FOOTAGE	DIP	AZIMUTH

HOLE NO. F-3 SHEET NO. 1

REMARKS B-X Core


 LOGGED BY J. C. BAKER

FOOTAGE		DESCRIPTION	SAMPLE				ASSAYS				
FROM	TO		NO.	% SULPHIDES	FOOTAGE			%	%	OZ/TON	OZ/TON
					FROM	TO	TOTAL				
0.0	2.5	Casing - Started at bedrock. Only 1.1 feet of core barrel material	0421		2.5	5.0	2.5				
2.5	54.7	Pegmatite medium coarse. Grey-green to pink and tan. Biotite content low. Silica medium high. Scattered pyrite throughout. All radioactive. Double to spot highs of four times background for uranium, thorium combined. Latter nil.	0422		5.0	10.0	5.0				
			0423		10.0	15.0	5.0				
			0424		15.0	17.5	2.5				
			0425		17.5	20.0	2.5				
			0426		20.0	25.0	5.0				
			0427		25.0	28.4	3.4				
54.7	60.0	Extra fine quartz biotite - phlogopite schist. Pyrite and pyrrhotite specks throughout. Bedding at 80 to 85 degrees to core axis.	0428		35.8	38.7	2.9				
			0429		38.7	41.2	2.5				
60.0	61.0	Pegmatite.									
61.0	62.7	Hornblende schist and last 3 tenths fine quartz biotite schist.									
62.7	82.0	Pegmatite. Grey green through cream and tan scattered biotite in flakes and concentrations. Thin platy pyrite. Radioactive to highs of 10 times background at 72.0 to 75.0. Distinct increase in C. P. S. from 72.0. Previous pegmatite grey green and siliceous. High count material tan to brown.	0430		62.7	65.0	2.3				
			0431		65.0	70.0	5.0				
			0432		70.0	72.0	2.0				
			0433		72.0	75.0	3.0				
75.0	82.0	Pegmatite. One count above background.									
82.0	84.4	White crystalline limestone.									
84.4	86.5	Pegmatite.									
86.5	88.0	Crystalline limestone.									
88.0	92.4	Admixture of quartz biotite schist with small limestone, quartz and pegmatite stringers.									
92.4	112.1	Pegmatite grey to tan with excessive biotite, garnet sections. Faintly radioactive.									
112.1	113.4	Ground core.									

B.M. B-3106

Laminated Limestone

DIAMOND DRILL RECORD

NAME OF PROPERTY Rexdale Mines Ltd. Palmerston Township
 HOLE NO. F-3 LENGTH 154.0'
 LOCATION See sketch
 LATITUDE _____ DEPARTURE _____
 ELEVATION _____ AZIMUTH _____ DIP Vertical
 STARTED May 22/69 FINISHED May 27/69

FOOTAGE	DIP	AZIMUTH	FOOTAGE	DIP	AZIMUTH

HOLE NO. F-3 SHEET NO. 2

REMARKS See sketch

LOGGED BY [Signature]

FOOTAGE		DESCRIPTION	SAMPLE			ASSAYS	
FROM	TO		NO.	SULPHIDES	FOOTAGE FROM TO TOTAL		
113.4	127.0	Biotite, garnet schist with very small pegmatite stringers.					
127.0	135.4	Pegmatite. Coarse fresh pink with very rare biotite.					
135.4	154.0	Biotite schist with few tiny quartz and pegmatite stringers.					
		End. Core recovery good; end of hole very blocky.					

EM. 6-1168

LANGRIDGE LIMITED

DIAMOND DRILL RECORD

NAME OF PROPERTY Rexdale Mines Limited Palmerston Township
 HOLE F-4 LENGTH 107.0 feet
 LOCATION See Sketch
 LATITUDE _____ DEPARTURE _____
 ELEVATION _____ AZIMUTH _____ DIP Vertical
 STARTED May 27, 1969 FINISHED May 29, 1969

FOOTAGE	DIP	AZIMUTH	FOOTAGE	DIP	AZIMUTH

HOLE NO. F-4 SHEET NO. 1

REMARKS B-X Core

LOGGED BY J. C. BAKER

FOOTAGE		DESCRIPTION	SAMPLE				ASSAYS				
FROM	TO		NO.	SULPHIDES	FOOTAGE			%	%	OZ/TON	OZ/TON
					FROM	TO	TOTAL				
0.0	3.0	Casing.	0435		3.0	8.0	5.0				
3.0	18.0	Pegmatite. Medium to coarse. Grey-green to pink. Radioactive 3 to 10 times background.	0436		8.0	12.0	4.0				
18.0	18.6	Lost Core.	0437		12.0	15.8	3.8				
18.6	42.9	Pegmatite. grey-green to pink. Biotite lean.									
42.9	43.5	Crystalline limestone.									
43.5	45.0	Pegmatite.									
45.0	48.0	Crystalline limestone with small apatite crystals.									
48.0	58.5	Pegmatite. Coarse, grey-green to tan. Slightly radioactive.									
58.5	62.2	Quartz biotite gneiss to schist. Coring at 70 to 80 degrees.									
62.2	84.5	Pegmatite, grey to green. Coarse biotite.									
84.5	92.0	Very fine light grey quartzite. A little sericite and fine pyrite.									
92.0	101.3	Medium to coarse interbanded crystalline limestone and biotite, altered hornblende sections.									
101.3	104.5	Light grey quartzite as previous.									
104.5	107.0	Admixture quartz, biotite, and sericite. Abundant stringers and blebs of pyrite a sparce pyrrhotite.									
		END									

DIAMOND DRILL RECORD

NAME OF PROPERTY _____
 HOLE NO. F-6 LENGTH _____
 LOCATION _____
 LATITUDE _____ DEPARTURE _____
 ELEVATION _____ AZIMUTH _____ DIP _____
 STARTED _____ FINISHED _____

FOOTAGE	DIP	AZIMUTH	FOOTAGE	DIP	AZIMUTH

HOLE NO. F-6 SHEET NO. 2

REMARKS _____

LOGGED BY _____

FOOTAGE		DESCRIPTION	SAMPLE			ASSAYS					
FROM	TO		NO.	% SULPHIDES	FOOTAGE			%	%	OZ/TON	OZ/TON
					FROM	TO	TOTAL				
125.2	128.2	Crystalline limestone with feldspar inclusions; central section. END Good core recovery.									

EM. 6-1188

LANGRIDGE LIMITED,

DIAMOND DRILL RECORD

NAME OF PROPERTY Rexdale Mines Limited Palmerston Township
 HOLE NO. F-7 LENGTH 433.0
 LOCATION See Sketch
 LATITUDE _____ DEPARTURE _____
 ELEVATION _____ AZIMUTH _____ DIP Vertical
 STARTED June 6, 1969 FINISHED June 19, 1969

FOOTAGE	DIP	AZIMUTH	FOOTAGE	DIP	AZIMUTH

HOLE NO. F-7 SHEET NO. 1

REMARKS A-X Core


 LOGGED BY J. C. BAKER

FOOTAGE		DESCRIPTION	SAMPLE			ASSAYS					
FROM	TO		NO.	% SULPHIDES	FOOTAGE		%	%	OZ/TON	OZ/TON	
					FROM	TO	TOTAL				
0.0	1.5	Casing.									
1.5	5.7	Pegmatite. Medium textured, light tan.									
5.7	6.3	Lost Core.									
6.3	7.1	Pegmatite as previous. Slightly radioactive.									
7.1	7.9	Lost Core.									
7.9	16.1	Pegmatite. Tan.									
16.1	17.1	Lost Core.									
17.1	18.8	Quartz, biotite, phlogopite gneiss. Coring at 40 to 60 degrees to core axis.									
18.8	24.5	Crystalline limestone with impurities.									
24.5	29.0	Pegmatite. Cream coloured, lacking in biotite.									
29.0	31.4	Crystalline limestone.									
31.4	32.6	Pegmatite. Grey.									
32.6	35.5	Crystalline limestone.									
35.5	44.0	Pegmatite, tan coloured with large biotite flakes.									
44.0	49.4	Biotite gneiss to schist with small pegmatite stringers.									
49.4	67.2	Pegmatite. Grey-green to tan with biotite concentrations.									
67.2	77.0	Biotite gneiss with limited garnet, quartz and pegmatite stringers.									
77.0	89.0	Pegmatite. Grey-green to tan.									
89.0	92.6	Crystalline limestone.									
92.6	96.0	Biotite, quartz gneiss with small pegmatite stringers.									
96.0	102.0	Pegmatite. Grey to tan with biotite concentrations.									
102.0	107.7	Grey quartzite. Fine with small specks of pyrite and pyrrhotite. Slightly radioactive.	10313		113.7	116.8	3.1				
107.7	139.8	Pegmatite. White to grey with excessive silica to 80% from footage 128.0 to 137.0.	10314		120.0	125.0	5.0				
			10315		125.0	127.5	2.5				

DIAMOND DRILL RECORD

NAME OF PROPERTY _____
 HOLE **F-7** LENGTH _____
 LOCATION _____
 LATITUDE _____ DEPARTURE _____
 ELEVATION _____ AZIMUTH _____ DIP Vertical
 STARTED _____ FINISHED _____

FOOTAGE	DIP	AZIMUTH	FOOTAGE	DIP	AZIMUTH

HOLE NO. F-7 SHEET NO. 2

REMARKS _____

LOGGED BY S. C. Baker

FOOTAGE		DESCRIPTION	SAMPLE				ASSAYS				
FROM	TO		NO.	% SULPHIDES	FOOTAGE			%	%	OZ/TON	OZ/TON
					FROM	TO	TOTAL				
139.8	147.0	Crystalline limestone with mica and altered hornblende. Pegmatite with high garnet, biotite sericite content. Coring at 40 to 50 degrees at high biotite sections. Slightly radioactive at scattered sections.									
147.0	232.5										
232.5	237.5	Quartz biotite schist with small bands crystalline limestone. Coring at 45 degrees.	10328		274.5	279.0	4.5				
237.5	289.0	Pegmatite. White to grey-green, coarse with increase in biotite and garnet in last 2 feet. Slightly radioactive at 275 to 283.									
289.0	340.0	Biotite garnet gneiss with scattered pegmatite stringers. Coring at 70 to 80 degrees.									
340.0	365.0	Biotite, sericite gneiss with small pegmatite stringers. Coring at widely varied angles 20 to 45 degrees.									
365.0	371.0	Pegmatite with abundant biotite.									
371.0	376.0	Biotite, sericite garnet gneiss.									
376.0	385.0	Pegmatite with excessive biotite. Very faintly radioactive.									
385.0	395.0	Biotite, sericite gneiss with small pegmatite stringers.									
395.0	430.4	Biotite gneiss to schist.									
430.4	433.0	Admixture quartz and limestone. Calcite crystals in small vugs.									
END											

DIAMOND DRILL RECORD

NAME OF PROPERTY Rexdale Mines Limited Palmerston Township
 HOLE F-8 LENGTH 162.3
 LOCATION See Sketch
 LATITUDE _____ DEPARTURE _____
 ELEVATION _____ AZIMUTH _____ DIP Vertical
 STARTED June 20, 1969 FINISHED June 24, 1969

FOOTAGE	DIP	AZIMUTH	FOOTAGE	DIP	AZIMUTH

HOLE NO. F-8 SHEET NO. 1

REMARKS A-X CORE

LOGGED BY J. C. BAKER

FOOTAGE		DESCRIPTION	SAMPLE			ASSAYS					
FROM	TO		NO.	% SULPHIDES	FOOTAGE		%	%	OZ/TON	OZ/TON	
					FROM	TO	TOTAL				
0.0	8.6	Casing.									
8.6	11.3	Crystalline limestone.									
11.3	16.6	Pegmatite, white to grey.									
16.6	26.0	Crystalline limestone with specks pyrite, pyrrhotite and small graphite flakes.									
26.0	27.4	Quartz fine granular with sericite.									
27.4	36.0	Crystalline limestone with specks pyrite and pyrrhotite. Biotite in last two feet. Coring at 60 to 80 degrees to core axis.									
36.0	49.3	Pegmatite, white to tan. Faintly radioactive.									
49.3	62.3	Crystalline limestone with specks pyrite and pyrrhotite. Biotite section from 59.0 to 60.5.									
62.3	70.6	Pegmatite. Ground core 70 to 71. Very faintly radioactive.									
70.6	73.4	Biotite, phlogopite gneiss with small quartz stringers. Abundant pyrite and chalcopyrite.									
73.4	75.0	Pegmatite.									
75.0	89.1	Impure quartzite with biotite, phlogopite flakes. Specks pyrite and pyrrhotite. Coring at 60 to 80 degrees.									
89.1	111.6	Pegmatite, grey green to tan and brown colour. Radioactive to 3 times background for uranium, thorium.	10331		89.1	93.0	3.9				
			10332		93.0	98.0	5.0				
111.6	117.6	Crystalline limestone with scattered biotite sections.	10333		98.0	103.0	5.0				
117.6	137.0	Biotite, sericite gneiss with pegmatite stringers and garnet. Massive garnet at 127.5 to 129.4.	10334		103.0	108.0	5.0				
			10335		108.0	111.7	3.7				
137.0	145.5	Pegmatite grey to tan.									
145.5	149.1	Biotite, gneiss with minor sericite and small pegmatite stringers.									
149.1	162.3	Pegmatite, grey to green.									
END											

DIAMOND DRILL RECORD

NAME OF PROPERTY Rexdale Mines Limited Palmerston Township
 HOLE NO. F-9 LENGTH 163.7 150.0 Feet
 LOCATION See Sketch
 LATITUDE _____ DEPARTURE _____
 ELEVATION _____ AZIMUTH _____ DIP Vertical
 STARTED June 29, 1969 FINISHED July 2, 1969

FOOTAGE	DIP	AZIMUTH	FOOTAGE	DIP	AZIMUTH

HOLE NO. F-9 SHEET NO. 1

REMARKS A-X Core

LOGGED BY J. C. BAKER

FOOTAGE		DESCRIPTION	SAMPLE			ASSAYS					
FROM	TO		NO.	% SULPHIDES	FOOTAGE		%	%	OZ/TON	OZ/TON	
					FROM	TO	TOTAL				
0.0	5.0	Casing.									
5.0	8.2	Pegmatite. White to grey-green. Very mildly radioactive.									
8.2	9.0	Biotite gneiss, quartz content light.									
9.0	10.0	Pegmatite, coarse and pale coloured.									
10.0	13.0	Biotite gneiss as previous.									
13.0	24.2	Pegmatite, coarse and pale.									
24.2	28.5	Admixture of quartz and fine limestone with numerous vugs containing clear calcite crystals.									
23.5	33.3	Pegmatite, coarse white with two small bands fine biotite gneiss.									
38.3	41.2	Quartzite, fine grey with specks of pyrite and pyrrhotite.									
41.2	46.7	Pegmatite, grey, coarse and lacking in mica. Very weakly radioactive.									
46.7	49.0	Grey quartzite as previous. Coring at 70 degrees to core axis.									
49.0	54.0	Pegmatite grey green. Two small bands of fine quartzite.									
54.0	62.4	Quartzite fine with two small biotite, phlogopite sections.									
62.4	71.6	Admixture crystalline limestone, with biotite, phlogopite and a little hornblende.									
71.6	72.3	Pegmatite.									
72.3	91.2	Admixture of small bands crystalline limestone and pegmatite stringers.									
91.2	152.5	Pegmatite and pegmatite gneiss with excessive biotite and sericite. Weakly radioactive at different intervals.									
152.5	163.7	Quartz biotite gneiss.									

END

DIAMOND DRILL RECORD

NAME PROPERTY Rexdale Mines Limited Palmerston Township
 HOLE NO. F-10 LENGTH 150.0
 LOCATION See Sketch
 LATITUDE _____ DEPARTURE _____
 ELEVATION _____ AZIMUTH _____ DIP Vertical
 STARTED July 3, 1969 FINISHED July 7, 1969

FOOTAGE	DIP	AZMUTH	FOOTAGE	DIP	AZMUTH

HOLE NO. F-10 SHEET NO. 1

REMARKS A-X Core

LOGGED BY J. C. BAKER

FOOTAGE		DESCRIPTION	SAMPLE				ASSAYS				
FROM	TO		NO.	% SULPH IDES	FOOTAGE		%	%	OZ/TON	OZ/TON	
					FROM	TO	TOTAL				
0.0	4.0	Casing.									
4.0	19.5	Pegmatite, tan to white. Slightly radioactive.									
19.5	20.5	Fine quartzite with gradational contacts.									
20.5	64.0	Pegmatite, mostly white and coarse.									
64.0	66.5	Admixture fine quartz and crystalline limestone. Some fine hornblende sections.									
66.5	75.6	Pegmatite grey.									
75.6	77.6	Ground core.									
77.6	86.3	Biotite sericite gneiss with small pegmatite stringers.									
86.3	98.0	Pegmatite, tan to pink with increasing biotite.									
98.0	110.0	Fine hornblende granitic gneiss with slight biotite. Coring at 70 degrees.									
110.0	111.2	Pegmatite with high hornblende content.									
111.2	124.7	Hornblende biotite gneiss.									
124.7	127.2	Pegmatite, pink to red.									
127.2	150.0	Biotite gneiss fine feldspar content. Few very small pegmatite stringers and minor hornblende. Coring at 60 to 80 degrees to core axis.									
END											

DIAMOND DRILL RECORD

NAME PROPERTY Rexdale Mines Limited Palmerston Township
 HOLE F-12 LENGTH 118.5
 LOCATION _____
 LATITUDE _____ DEPARTURE _____
 ELEVATION _____ AZIMUTH _____ DIP Vertical
 STARTED July 10, 1969 FINISHED July 12, 1969

FOOTAGE	DIP	AZIMUTH	FOOTAGE	DIP	AZIMUTH

HOLE NO. F-12 SHEET NO. 1

REMARKS A-X Core

LOGGED BY J. C. BAKER

FOOTAGE		DESCRIPTION	SAMPLE				ASSAYS				
FROM	TO		NO.	% SULPHIDES	FOOTAGE			%	%	OZ/TON	OZ/TON
					FROM	TO	TOTAL				
0.0	9.0	Casing.									
9.0	57.0	Intermittent bands of biotite garnet gneiss, crystalline limestone, quartz biotite gneiss and quartzite. Too small and repetitive to separate.									
57.0	61.0	Garnet biotite pegmatic gneiss.									
61.0	81.3	Pegmatite with excessive biotite, sericite and minor garnet.									
81.3	87.5	Pegmatite pale pink, little or no garnet.									
87.5	110.0	Biotite, sericite with small pegmatite injections.									
110.0	112.2	Pegmatite tan. Small amount biotite.									
112.2	115.0	Biotite sericite gneiss.									
115.0	116.6	Pegmatite, large biotite flakes.									
116.6	118.5	Biotite, sericite gneiss.									
END.											