



ON

PROPERTY OF H. G. GREENE, CAVENDISH TOWNSHIP

OPTIONED TO LOUVICOURT GOLDFIELD CORPORATION

FOREWARD

A magnetometer survey and a scintillometer survey was conducted by Louvivourt Goldfield Corporation on the following mining claims in Cavendish Township, Ontario.

EO 35871	EO 36899	EO39670
EO 35872	EO 36900	EO39671
EO 35874	EO 36901	EO39672
EO 36893	EO 36902	EO39673
EO 36894	EO 39368	EO39674
EO 36895	EO 39369	EO39675
EO 36896	EO 39370	EO39676
EO 36897	EO 39375	EO39677
EO 36898		

The claims were owned by Mr. H. G. Greene, 835 Nicholls Street, Peterborough, Ontario.

The work was done between May 8 and May 15, 1969.

Magnetometer readings were taken by G. C. Campbell, 1403 Ballyclare Drive, Mississauga, Ontario. The instrument used was an M - 700 Fluxgate Magnetometer with a sensitivity of 10 gammas.

Scintillometer readings were taken by Wayne Windover of Buckhorn, Ontario. The instrument used was a 3 channel TV-3 Scintillometer manufactured by McPhar Geophysics.

Line cutting was under the direction of Wayne Windover of Buckhorn, Ontario.

MINING RECORDERS OFFICE—TORONTO

RECEIVED

JUL 14 1969

AM PM

7 8 9 10 11 12 1 2 3 4 5 6

COPY TO BE MADE BY THE RECORDS SECTION

LOCATION AND ACCESS

The claims are located in the south-west part of Cavendish Township approximately 10 miles north of the village of Buckhorn. A Department of Lands and Forests Access Road traverses some the the claims about 2 miles north-west of Highway 507.

GEOLOGY

The predominant rock in the area is a paragneiss which has been intruded by granite. A pegmatite which is probably associated with the granite intrusion is a host rock for uranium mineralization.

PREVIOUS EXPLORATION

Some diamond drilling has been done on the south part of the claim group. All claims have been covered by prospecting.

RECENT PROGRAM

Approximately 24.3 miles of line were cut on the claims and something like 690 stations were established on which magnetometer and scintillometer readings were taken.

RESULTS

No scintillometer readings of any consequence were noted.

Several areas of high magnetics were found. These are probably the the result of high pressure and compression of the country rock and reflect regional stresses.

No connection between high magnetics and the location of uranium mineralization has been established.



G. C. Campbell, BSc., P.Eng.

July 6, 1969
Mississauga, Ontario.

LEGEND

- PATENTED LAND ⊙
- CROWN LAND SALE C.S.
- LEASE Ⓛ
- LOCATED LAND Loc.
- LICENSE OF OCCUPATION L.O.
- MINING RIGHTS ONLY M.R.O.
- SURFACE RIGHTS ONLY S.R.O.
- ROADS —
- IMPROVED ROADS —
- KING'S HIGHWAYS —
- RAILWAYS —
- POWER LINES —
- MARSH OR MUSKEG —
- MINES X
- CANCELLED C.

NOTES

This Map Is Not To Be Used
FOR SURVEY PURPOSES

400' Surface Rights Reservation around all
lakes and rivers.

For status of summer resort locations & islands
please contact Dept. of Lands & Forests.

Original shoreline shown thus: —

F.R.I. shoreline shown thus: —

Patents Map shoreline shown thus: —

Area shown thus: [hatched] reserved for proposed
Provincial Park - Withdrawn from staking
Sec 34(d) of the Mining Act File 16070P.

Mining claims staked in this Twp. subject
to Sec 110 of the Mining Act

Galway Twp. (M-94)

Anstruther Twp. (M-45)

Harvey Twp. (M-101)

Burleigh Twp. (M-62)



PLAN NO. - M-72

DEPARTMENT OF MINES
- ONTARIO -

DATE OF ISSUE
NOV 21 1989
ONTARIO DEPT. OF MINES

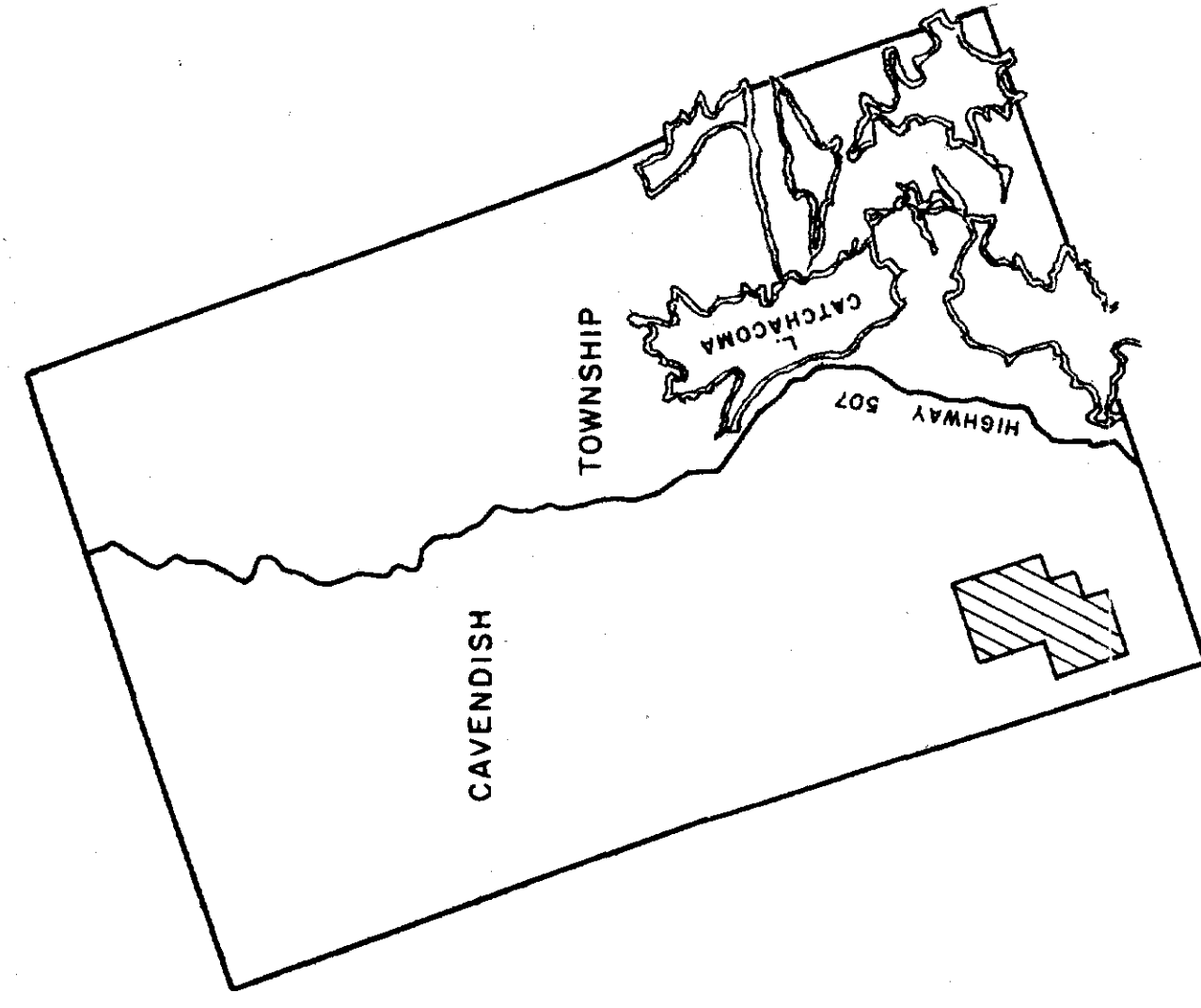


SCANTILLOMETER READING
MAGNETOMETER READING
GAMMAS PER MINUTE

CLAIM POST I EO 35872

RECEIVED
 JUL 14 1989
 7:30 P.M. 11/23/89
 11/23/89

SCINTILLOMETER READING MAGNETOMETER READING



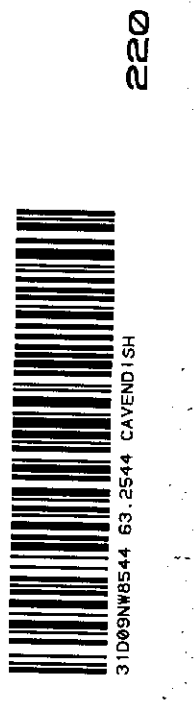
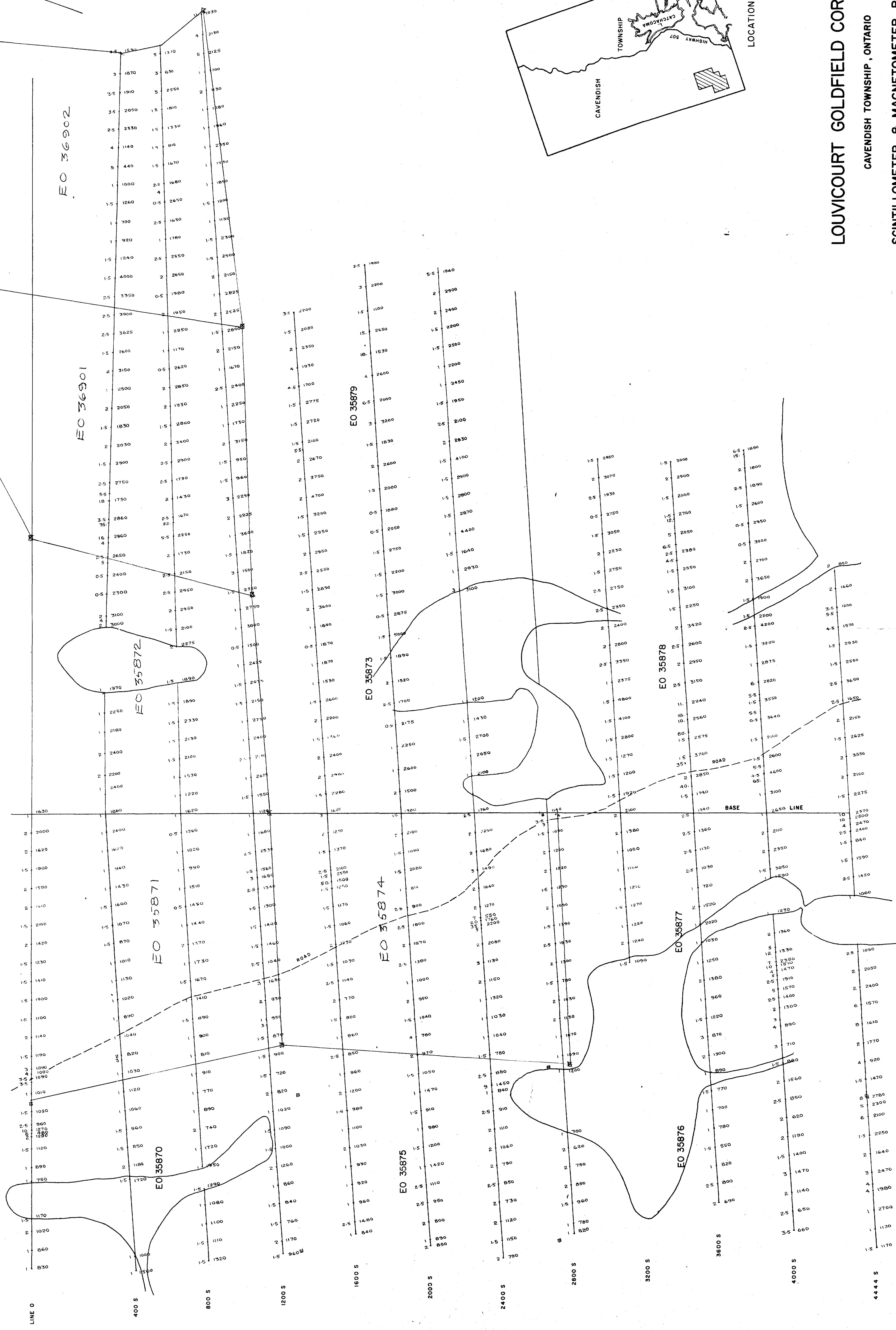
LOCATION MAP

LOUVICOURT GOLDFIELD CORPORATION
 CAVENDISH TOWNSHIP, ONTARIO
SCINTILLOMETER & MAGNETOMETER READINGS

NOVEMBER 1988

SCALE 1 IN. = 200 FT.

63-2544

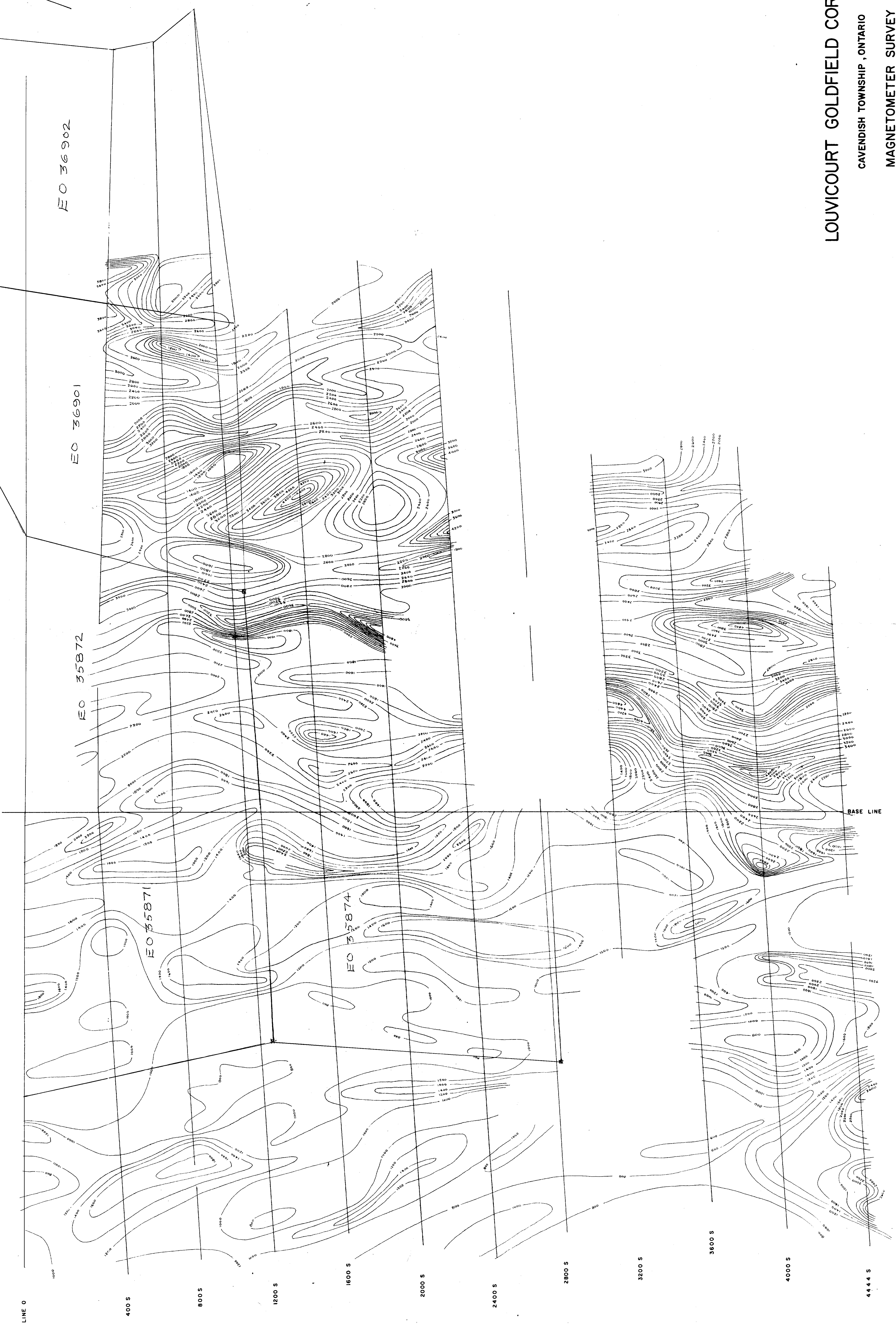




- UNDER 1200 GAMMAS
- 1200 - 2400
- 2400 - 3600
- OVER 3600



RECEIVED
JUL 14 1969
78910/11/2/3/4/5/6/7/8/9/10/11/12



LOUVICOURT GOLDFIELD CORPORATION
CAVENDISH TOWNSHIP, ONTARIO
MAGNETOMETER SURVEY

NOVEMBER 1968

SCALE 1 IN. = 200 FT.

[Handwritten signature]
63-2544



E-40

RECEIVED
JUL 14 1989

CLAIM POST I EO 39886



SCINTILLOMETER READING
COUNTS PER MINUTE

MAGNETOMETER READING
GAMMAS

LOUVCOURT GOLDFIELD CORP.

CAVENDISH TOWNSHIP, ONTARIO
NORTH PORTION OF CLAIM GROUP

SCINTILLOMETER & MAGNETOMETER READINGS

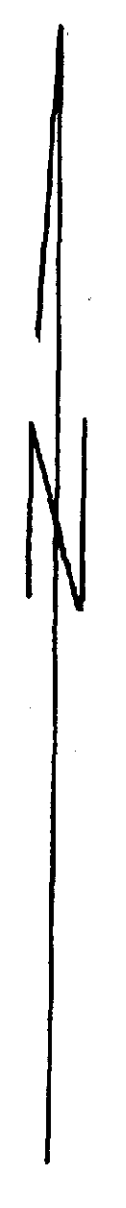
SCALE 1 IN. = 200 FT.

JUNE 2, 1989

63-2544

[Handwritten signature]

PROCESSED
BY
JUL 14 1969
AT
TERRACON CONSULTANTS



LOUVICOURT GOLDFIELD CORP.

CAVENDISH TOWNSHIP, ONTARIO
NORTH PORTION OF CLAIM GROUP

MAGNETOMETER SURVEY

SCALE 1 IN. = 200 FT.

JUNE 2, 1969

63-2544 ✓ *[Signature]* G.C.C.