



31D09NW8555 28 CAVENDISH

010

Diamond Drilling

Township of Cavendish

Report No: 28

Work performed by: H. G. Greene & Louvicourt Goldfields Corp.

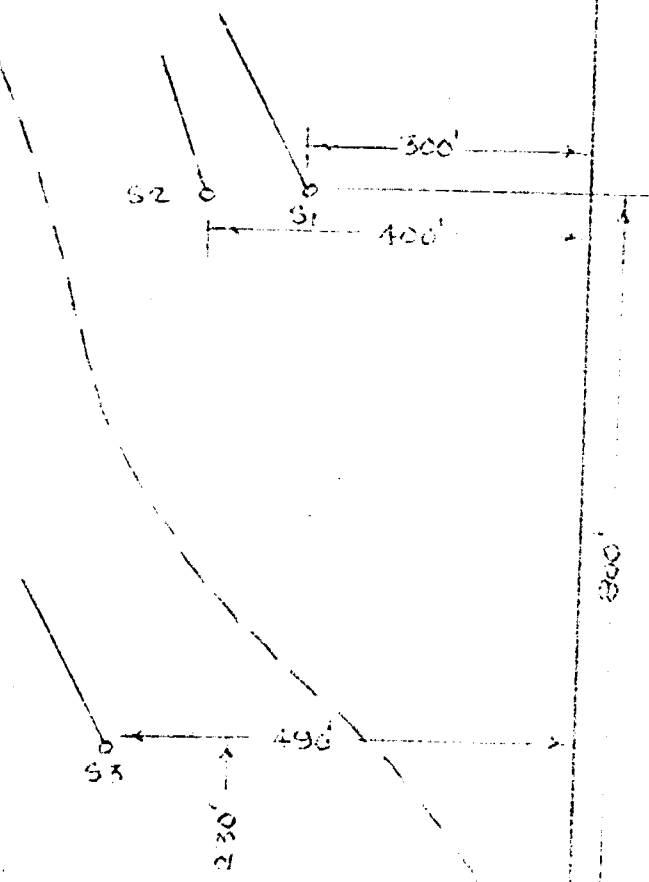
Claim No	Hole No	Footage	Date	Note
E.O. 35874	S-1	287'	Jan/69	
	S-2	206'	Jan/69	
	S-3	259'	Feb/69	
E.O. 35878	S-4	200'	Feb/69	
	S-5	200'	Feb/69	
	S-6	190'	Feb/69	
E.O. 35872	C-1	200'	Nov/69	
	C-2	201'	Nov/69	
E.O. 36894	C-3	183'	Nov/69	
	C-4	201'	Nov/69	
	C-5	203'	Dec/69	
	C-6	204'	Dec/69	

N 1/2 Lot 4
Cor 2
N 1/2 Lot 4
Cor 3
 ↓

Notes: 4/70

EO 35874

EO 35873



D.D.H. No. S-2
 LOCATION _____
 SECTION _____

PROPERTY ICHIKAWA GOLDMINE COL. QUARRY Coverdale Township

LADDER _____ STRIKE 20°/9

HEADING 240 DEPTH 200

DIVISION _____ COMPLETION DATE 21/29

DIA 45

REMARKS _____ V.C. _____ H.H. _____

GENERAL GEOLOGY	ANALY		FOCALITY	ECONOMIC GEOLOGY
	VALUE	PERY		
Gravel			0 - 5	
Greenish-grey sandstone			6 - 8	
Dark shale			8 - 30	
Sandstone with high iron oxide content Granite in places			30 - 51	
Reddish granite - high iron oxide content			51 - 175	
Sandstone			175 - 189	
Granite			189 - 193	
Sandstone			193 - 206	

D.D.H. No. 51
 LOCATION _____
 SECTION _____

PROPERTY ICEBERG COBALT LTD. CORPORATION Cavendish Township

LATITUDE _____ STATION January 23/69 DEPTH 309
 DEPTH _____ CORRECTION January 28/69 DEPTH 267
 ELEVATION _____ V.D. _____ D.D. _____

GENERAL CHARACTER	ASSET		SAMPLE		FOOTAGE	ECONOMIC GEOLOGY
	VALUE	FEET	NUMBER			
Conifer					0 - 9	
Paragneiss					9 - 28	
Paragneiss with fragments of dark iron ore					28 - 58	
Paragneiss with Pyroxenite					58 - 61	
Paragneiss					61 - 104	
Light coloured Pyroxenite					104 - 106	
Paragneiss					106 - 151	
Light coloured Pyroxenite					151 - 152	
Paragneiss					152 - 155	
Light coloured fine grained Gneiss					155 - 159	
Paragneiss					159 - 168	
Light coloured fine grained Gneiss					168 - 173	
Paragneiss					173 - 212	
Pyroxenite - light coloured					212 - 212.5	
Paragneiss with the old Pyroxenite clasts					212.5 - 259	
Light coloured Pyroxenite					259 - 262	
Paragneiss (bedrock)					262 - 263	

file
35874

GCs phd

D.D.H. No. S-4
LOCATION _____
SECTION _____

PROPERTY JAMISCHET GOLDFIELD CONCESSION Cayendish Township

LATITUDE _____ STATION February 2/69 DRAINING 550 DEPTH 200
DEVIATION _____ COMPLETED February 1/69 DIB 1/65
ELEVATION _____ V.A. _____ D.D. _____

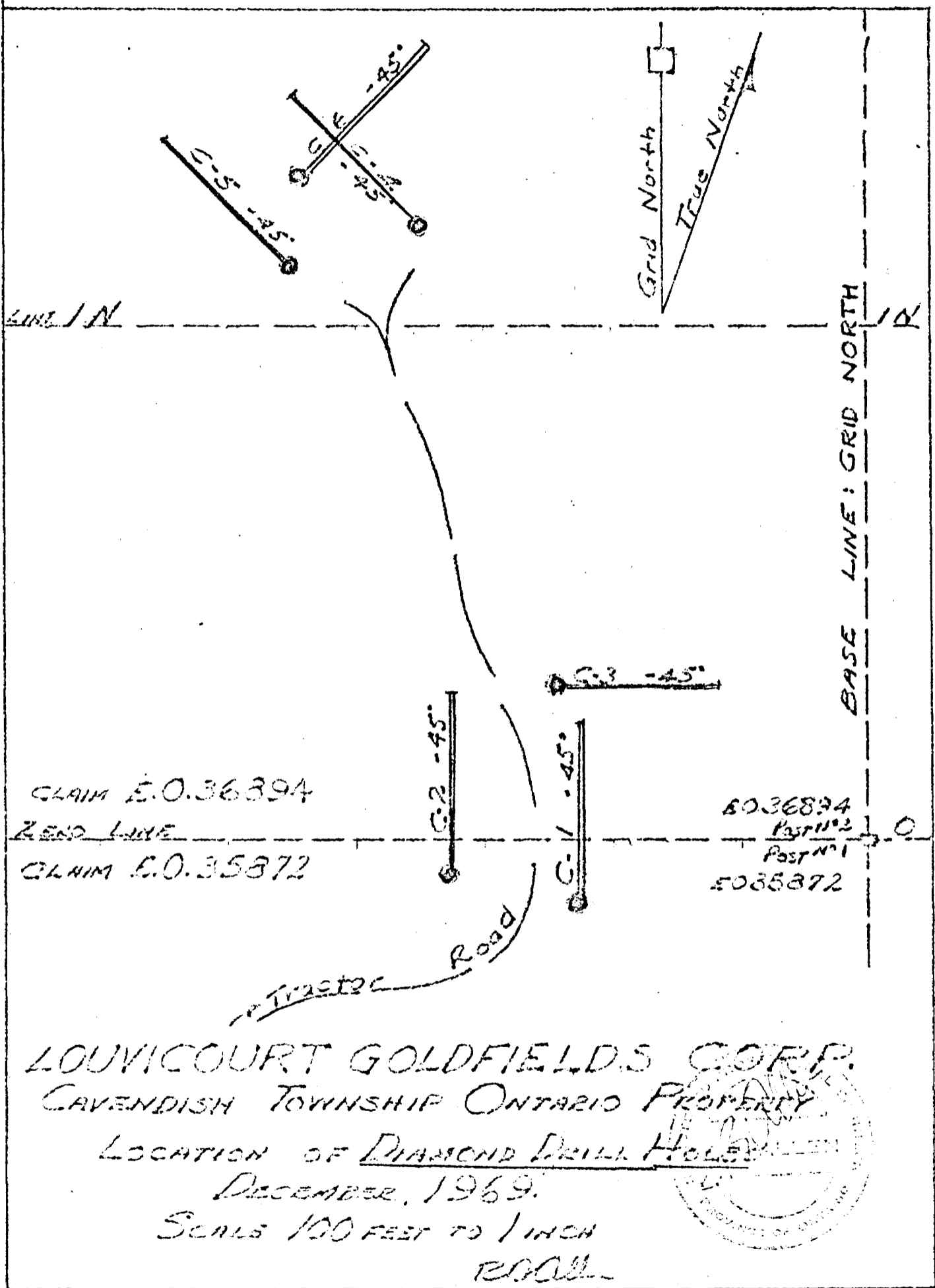
GENERAL OBSERVATIONS	ASSAY		SAMPLE		THICKNESS	ECONOMIC GEOLOGY
	GRAV.	VALU.	TYPE	NUMBER		
Gravel					0-6	
10-200					6-200	

*file
35078*

*# 42/69 Cayendish Tp
H. G. GREENE*

H.G. Greene





4/70 awarded by
H.B. Greene

DIAMOND DRILL RECORD

PROPERTY Louvicourt Goldfields Corporation

HOLE No. C-1

LOCATION Claim E035872

Started: November 13, 1969

Bearing: Grid North

Cavendish Township, Ontario

Latitude)

Completed: November 16, 1969

Dip: 45°

Departure }

Line Zero 225 West

50 South

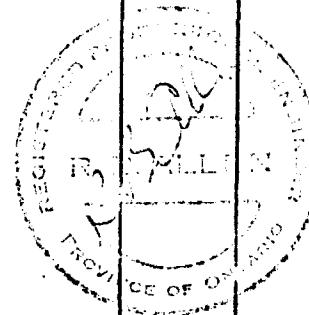
Length: 200'

Elevation N.A.

Dip tests: Nil

Logged by: R.B. Allen

Footage	Description	Sample	Footage	Width	Assays
0 - 5	Casing.				
5 - 105	Paragneiss: Granite 70%. Local Pegmatite Stringers; cross core at right angles. Core solid. No radioactivity	Nil			
105 - 111	Pegmatite: Alkali Feldspar (Orthoclase) plus Quartz. 10% Biotite, 10% Magnetite irregularly disseminated. Moderate radioactivity throughout. Assayed Uranium.	C-11	105-107	2.0	.06% U3 O8
		C-12	107-109	2.0	.07% " "
		C-13	109-111	2.0	.05% " "
111 - 123	Granite, Locally Gneissic	Nil			
123 - 147	Pegmatite: As 105 - 111, but radioactive only 123 - 125, and little Magnetite.	C-14	123 - 125	2.0	.06% U3 O8
147 - 200	Granite. Local Pegmatite 20%, no radioactivity. Hole ended 200 feet.	Nil			



DIAMOND DRILL RECORD

PROPERTY Louvicourt Goldfields Corporation

HOLE No. C-2

LOCATION Claim E035872

Started: November 18, 1969

Bearing: Grid North

Latitude } Cavendish Township, Ontario.

Departure) Line Zero 325 West

Completed: November 20, 1969

Dip: 45°

Departure) 25 South

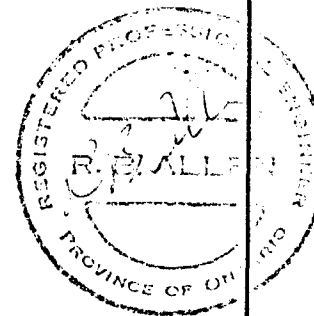
Length: 201 feet

Elevation N.A.

Dip tests: Nil

Logged by: R.B. Allen

Footage	Description	Sample	Footage	Width	Assays
0 - 6	Casing.				
6 - 201	Granite. 80%. Locally Gneissic, Local Stringers Pegmatite, no radioactivity.	Nil			
	Hole ended 201 feet.				



DIAMOND DRILL RECORD

Sheet No. 1 of 2 sheets.

PROPERTY Louvicourt Goldfields Corporation

HOLE No. C-3

LOCATION Claim EO 36894
Cavendish Township, Ontario.

Started: November 24, 1969

Bearing: Grid East

Latitude)
Departure) Line Zero 240 West
 120 North

Completed: November 25, 1969

Dip: 45°

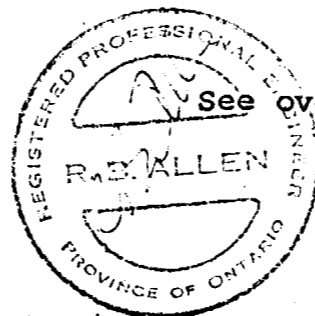
Elevation N.A.

Dip tests: Nil

Length: 183 feet

Logged by: R.B. Allen

Footage	Description	Sample	Footage	Width	Assays
0 - 5	Casing.				
5 - 40	Granite 80%. Locally Gneissic.				
40 - 46	Pegmatite: Orthoclase 75% Quartz 5% Biotite 10% Magnetite 10% Low to moderate radioactivity throughout. Structures trend at 50° to core axis - assays for Uranium only.	C-31	40-42	2.0	.06% U ₃ O ₈
		C-32	42-44	2.0	.01 " "
		C-33	44-46	2.0	.15 " "
46 - 55	Paragneiss: 40% Granite trends 45° to core	Nil			
55 - 81	Granite 80%. Local patchy Pegmatite	Nil			
81 - 111	Paragneiss 50% Granite. Trends 50° to core	Nil			



DIAMOND DRILL RECORD

Sheet No. 2 of 2 sheets.

PROPERTY Louvicourt Goldfields Corporation

HOLE No. C-3

LOCATION Claim EO 36894
Cavendish Township, Ontario.

Started:

Bearing: Cont'd.

Latitude

Completed:

Dip:

Departure

Dip tests:

Length:

Elevation

Logged by:

Footage	Description	Sample	Footage	Width	Assays
111 - 115	Pegmatite: As 40 - 46. Trends 45° to core.	C-34	111 - 113	2.0	.05% U ₃ O ₈
		C-35	113 - 115	2.0	.09 " "
115 - 183	Paragneiss: 25% Granite: Banding at right angles to core, regular.	Nil			
Hole ended at 183 feet.					



DIAMOND DRILL RECORD

PROPERTY Louvicourt Goldfields Corporation

HOLE No. C-4

LOCATION claim E036894

Started: November 27, 1969

Bearing: Grid N-W

Latitude } Cavendish Township, Ontario.

Departure } Line 1 North 350 West

80 North

Completed: November 29, 1969

Dip: 45°

Elevation N.A.

Dip tests: Nil

Length: 201 feet

Logged by: R.B. Allen

Footage	Description	Sample	Footage	Width	Assays
0 - 7	Casing.				
7 - 118	Granite 40% Pegmatite 60%. Local traces Magnetite. Faint local radioactivity.	C-41 C-42 C-43 C-44 C-45 C-46	7.0-9.5 9.5-12.0 17.0-19.5 19.5-22.0 62.0-64.5 64.5-67.0	2.5 2.5 2.5 2.5 2.5 2.5	% U ₃ O ₈ Nil Trace Nil Nil Trace Trace
118 - 172	Paragneiss 40% Granite. Structures 45° to core Axis.	Nil			
172 - 201	Granite, locally Gneissic at 30° to core Axis - Local Pegmatite Stringers.	Nil			
	Hole ended at 201 feet.				



DIAMOND DRILL RECORD

Sheet No. 1 of 2 sheets.

PROPERTY Louvicourt Goldfields Corporation

HOLE No. C-5

LOCATION Claim E036894
Cavendish Township, Ontario.

Started: December 3, 1969.

Bearing: Grid N-W

Latitude)
Departure) Line 1 North 450 West
50 North

Completed: December 7, 1969.

Dip: 45°

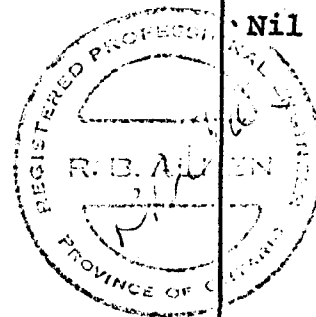
Elevation N.A.

Dip tests: Nil

Length: 203 feet

Logged by: R.B. Allen

Footage	Description	Sample	Footage	Width	Assays
0 - 8	Casing				
8 - 28	Pegmatite. 80% Feldspar 10% Quartz Traces Magnetite. Faint local radioactivity.	C-51 C-52	20 - 22 22 - 24	2.0 2.0	% U ₃ O ₈ .02 .01
28 - 55	Granite. Locally Gneissic at 45° to Core Axis.	Nil			
55 - 72	Pegmatite as 8 - 28	C-53 C-54 C-55	57 - 59 67 - 69 69 - 71	2.0 2.0 2.0	Nil Trace Trace
72 - 85	Granite as 28 - 55	Nil			
85 - 102	Paragneiss 40% Granite. Bands 40° to core.	Nil			
102 - 128	Granite as 28 - 55	Nil			



DIAMOND DRILL RECORD

Sheet No. 2 of 2 sheets.

PROPERTY Louvicourt Goldfields Corporation

HOLE No. C-5

LOCATION Claim E036894
Cavendish Township, Ontario.

Started:

Bearing: Cont'd.

Latitude

Completed:

Dip:

Departure

Length:

Elevation

Dip tests:

Logged by: % U₃ O₈

Footage	Description	Sample	Footage	Width	Assays
128 - 139	Pegmatite as 8 - 28.	C-56	128 - 130	2.0	Nil
		C-57	130 - 132	2.0	Trace
		C-58	137 - 139	2.0	.02
139 - 197	Granite as 28 - 55.	Nil			
197 - 201	Pegmatite as 8 - 28.	C-59	197 - 199	2.0	.04
		C-510	199 - 201	2.0	.01
201 - 203	Granite.	C-511	201 - 203	2.0	Trace
	Hole ended at 203 feet.				



DIAMOND DRILL RECORD

Sheet No. 1 of 2 sheets.

PROPERTY Louvicourt Goldfields Corporation

HOLE No. C-6

LOCATION Claim E036894

Started: December 14, 1969.

Bearing: Grid N-E

Cavendish Township, Ontario.

Latitude)

Line 1 North 440 West

Completed: December 16, 1969.

Dip: 45°

Departure)

120 North

Length: 204 feet

Elevation N.A.

Dip tests: Nil

Logged by: R.B. Allen

Footage	Description	Sample	Footage	Width	Assays
0 - 6	Casing				% U ₃ O ₈
6 - 22	Paragneiss 40% Granite	Nil			
22 - 29	Pegmatite: 70% Feldspar, 20% Quartz, 10% Biotite. Faint radioactivity near 29.	C-61	27 - 29	2.0	.02
29 - 36	Granite, locally Gneissic.				
36 - 38	Pegmatite as 22 - 29. Faint radioactivity.	C-62	36 - 38	2.0	.12
38 - 41	Granite, Gneissic.				
41 - 43	Pegmatite as 22 - 39.	C-63	41 - 43	2.0	.01
43 - 57	Paragneiss 40% Granite. Banding 45° to core axis.				



DIAMOND DRILL RECORD

Sheet No. 2 of 2 sheets.

PROPERTY Louvicourt Goldfields Corporation

HOLE No. C-6

LOCATION Claim E036894

Started:

Bearing: Cont'd.

Latitude

Cavendish Township, Ontario.

Completed:

Dip:

Departure

Length:

Elevation

Dip tests:

Logged by: R.B. Allen

Footage	Description	Sample	Footage	Width	Assays
57 - 92	Granite. Locally Gneissic				
92 - 98	Pegmatite: Orthoclase 70%, Quartz 25%, Chlorite 5%. No radioactivity	None			
98 - 204	Paragneiss, locally 60% Granite. Banding at 60% to core axis. All core solid, little lost. Hole ended at 204 feet.				

