



31D155W0006 13 SNOWDON

010

**Diamond Drilling**

Township of SNOWDON

**Report NO 13**

**Work performed by:** St. Joseph Explorations Limited

<b>Claim NO</b>	<b>Hole NO</b>	<b>Footage</b>	<b>Date</b>	<b>Note</b>
E0503754-5	S-71	156M	Feb/79	(1)
	S-72	186M	Feb/79	(1)

**Notes:** (1) #32-79

*Ironstone Sup*

#32-79

VII

VI

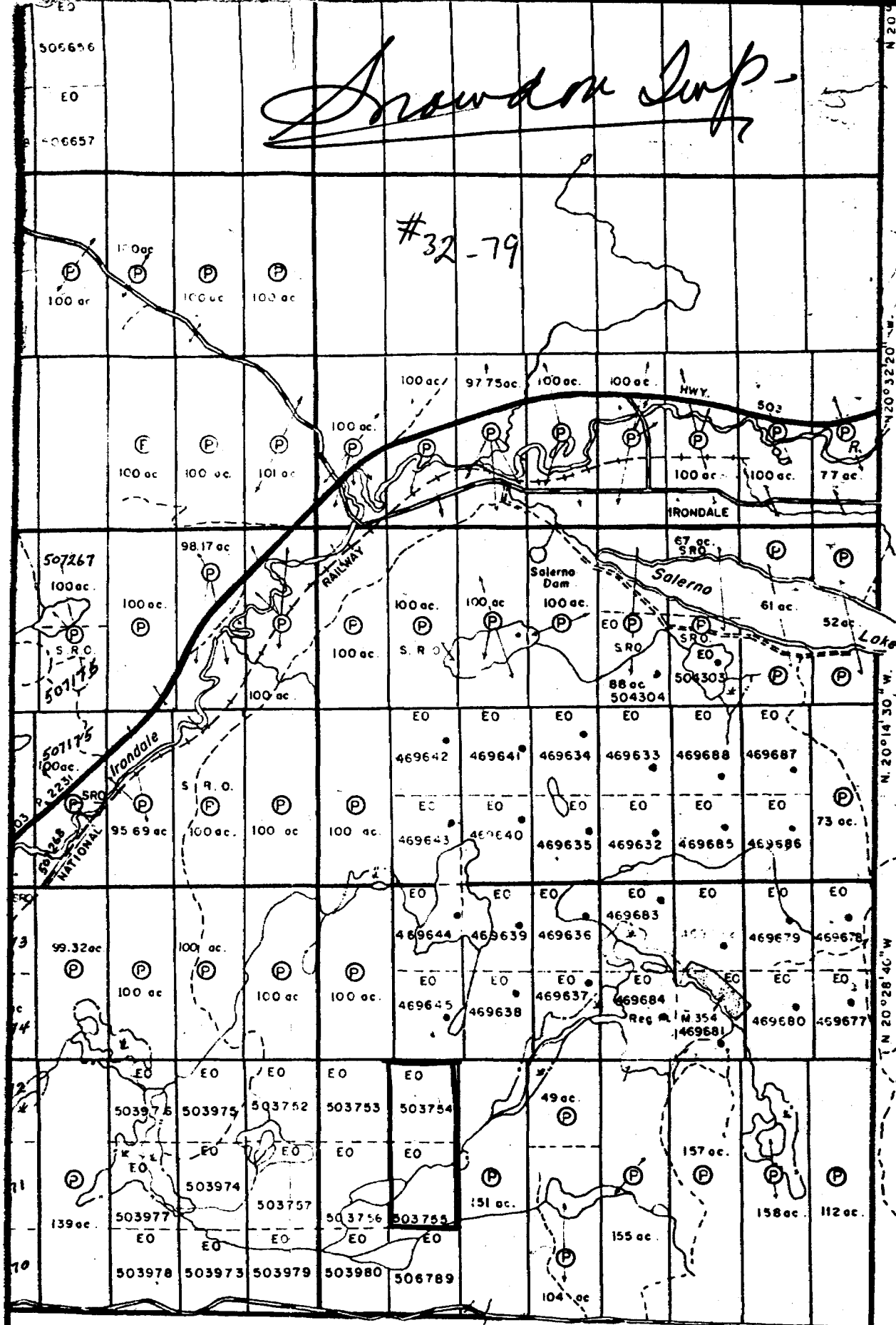
V

IV

III

II

I



22 23 24 25 26 27 28 29 30 31 32 33





METRES		SECTION " =	DESCRIPTION	SAMPLE NO.	FROM	TO	LENGTH	ASSAYS					
FROM	TO												
31.2	31.9		Grey Dolomitic Marble - med. grey, m. gr.; faint banding. Minor streaks of calcite. Trace disseminations of py + po (2%). Minor oxidized phlog.										
31.9	32.2		Dolomitic Marble - off-white, m. gr., py + po 2% finely dissem. Traces of calcite. Minor phlog. 31.9 - very minor flecks of sphalerite.										
32.2	39.7		Grey to Grey Banded Dolomitic Marble - med. to steel grey, f. to m. gr. Faint to weak banding in short sections. C.A. 86° - 90°. Minor phlogopite (10%). Minor calcite as fine stringers and matrix. Occasional serp. patches assoc. w/phlog. Py + po finely disseminated 1-2%. Locally find minor diop. Random v. fine black lamellae of calc. silicate and graphite (i.e. 38.9 to 39.2). Gradational into next unit.										
39.7	41.1		Interlayered Grey Dolomitic Marble and Diopside, Quartz and Calc. Silicate Lt. to dark grey, f. gr., fair banding though irregular. mm scale irregular bands of: 1) calc. silicate & graphite, w/minor diop - quartz. 2) diopside - quartz 3) evaporite - diopside and quartz. Minor serp. and phlog. in association. 40.9 - get what appears to be a chert pebble with oxidized section. 40.9-41.1 - get incr. of irregular bands of evaporite or Mg carbonate. Assoc. with a black-green serp. Gradational into next unit.										
41.1	72.8		Grey to Grey Banded Dolomitic Marble - lt. to med. grey, f. to m. gr., faint to fair banding. C.A. variable 40°-85°. Minor calcite, evaporite, and diopside stringy bands and patches. Locally get more graphitic sections. Traces of phlog. Py + po as dissem. grains and spots.										

(cont'd)







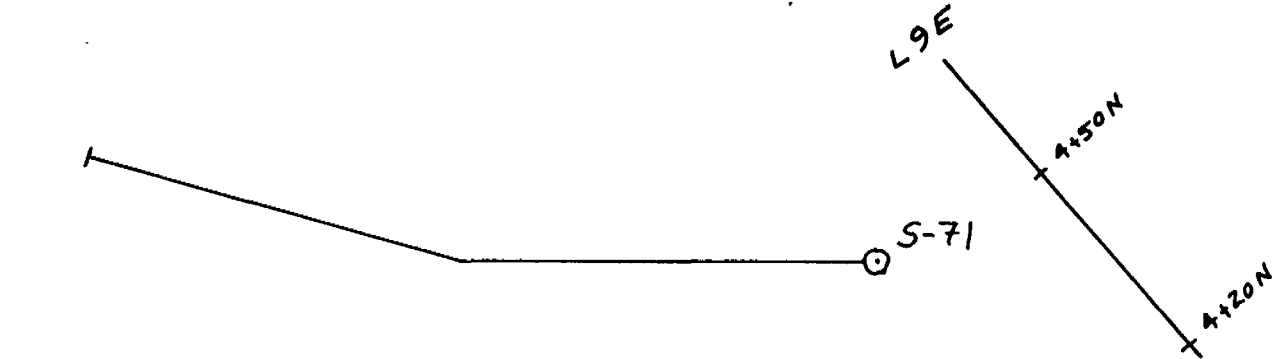






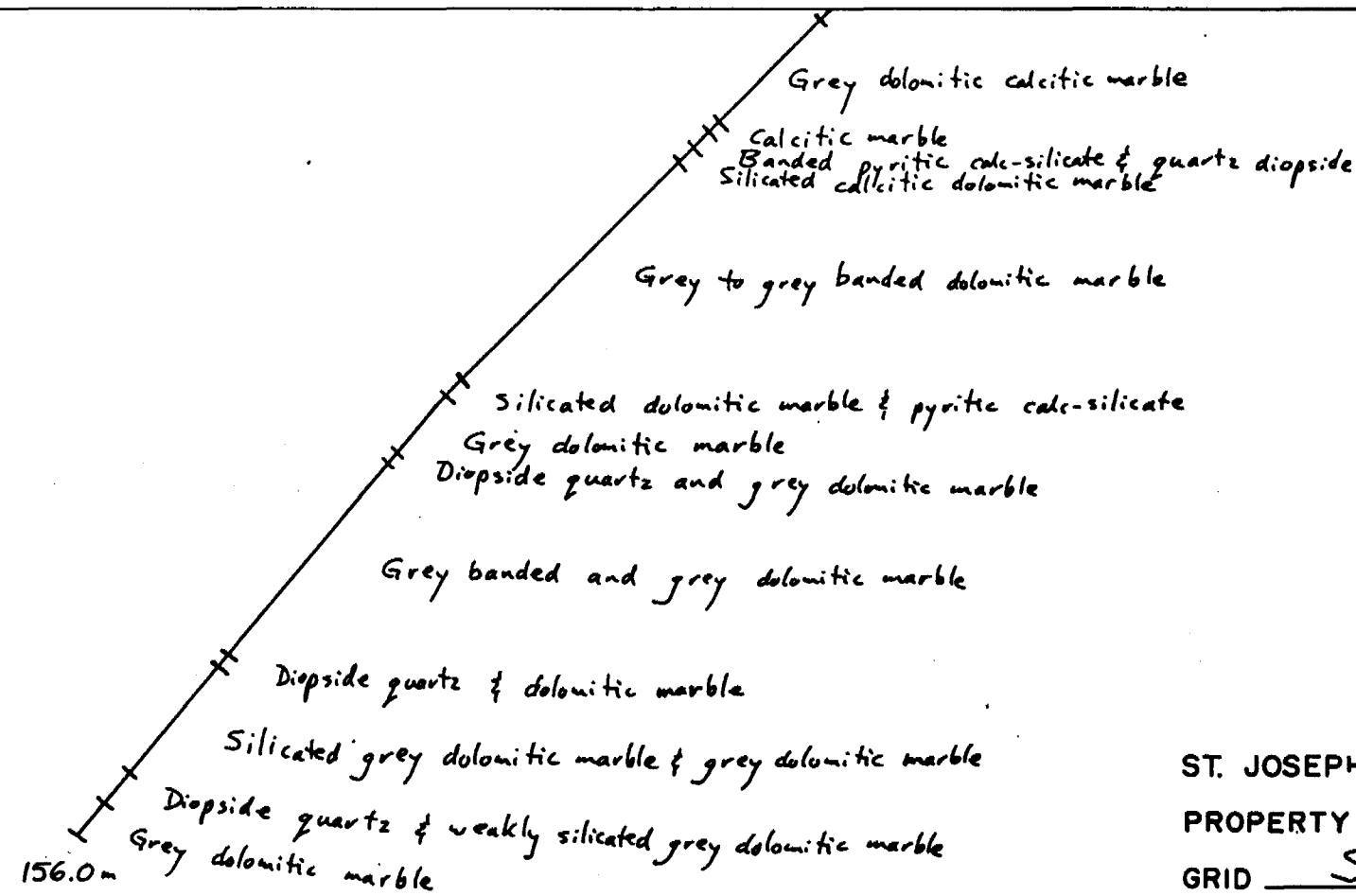
HOLE NO. S-71

SECTION Plane of hole



S-71

Elev. 961 m



ST. JOSEPH EXPLORATIONS LIMITED

PROPERTY Salerno Lake

GRID Southwest Grid

CO-ORD. 4+55 N 8+7 E

SCALE 1:1000











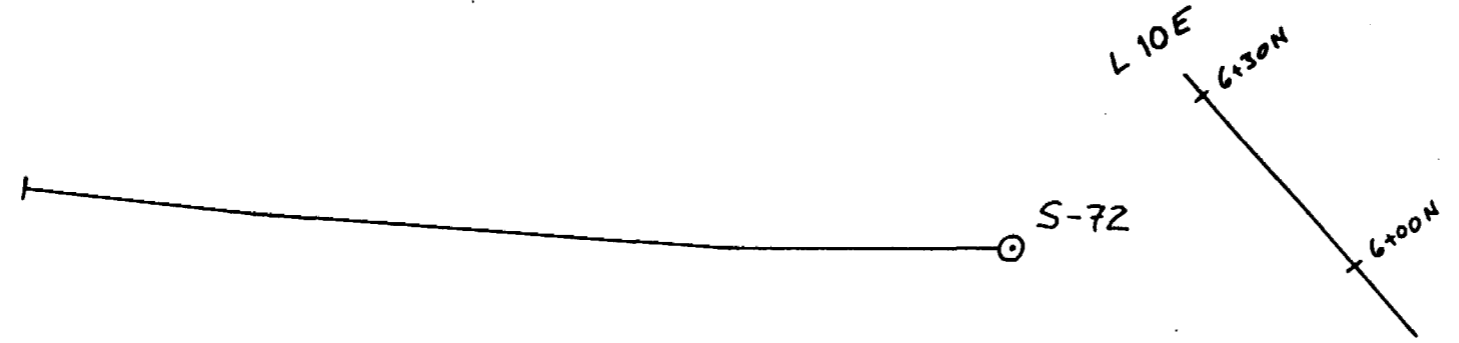






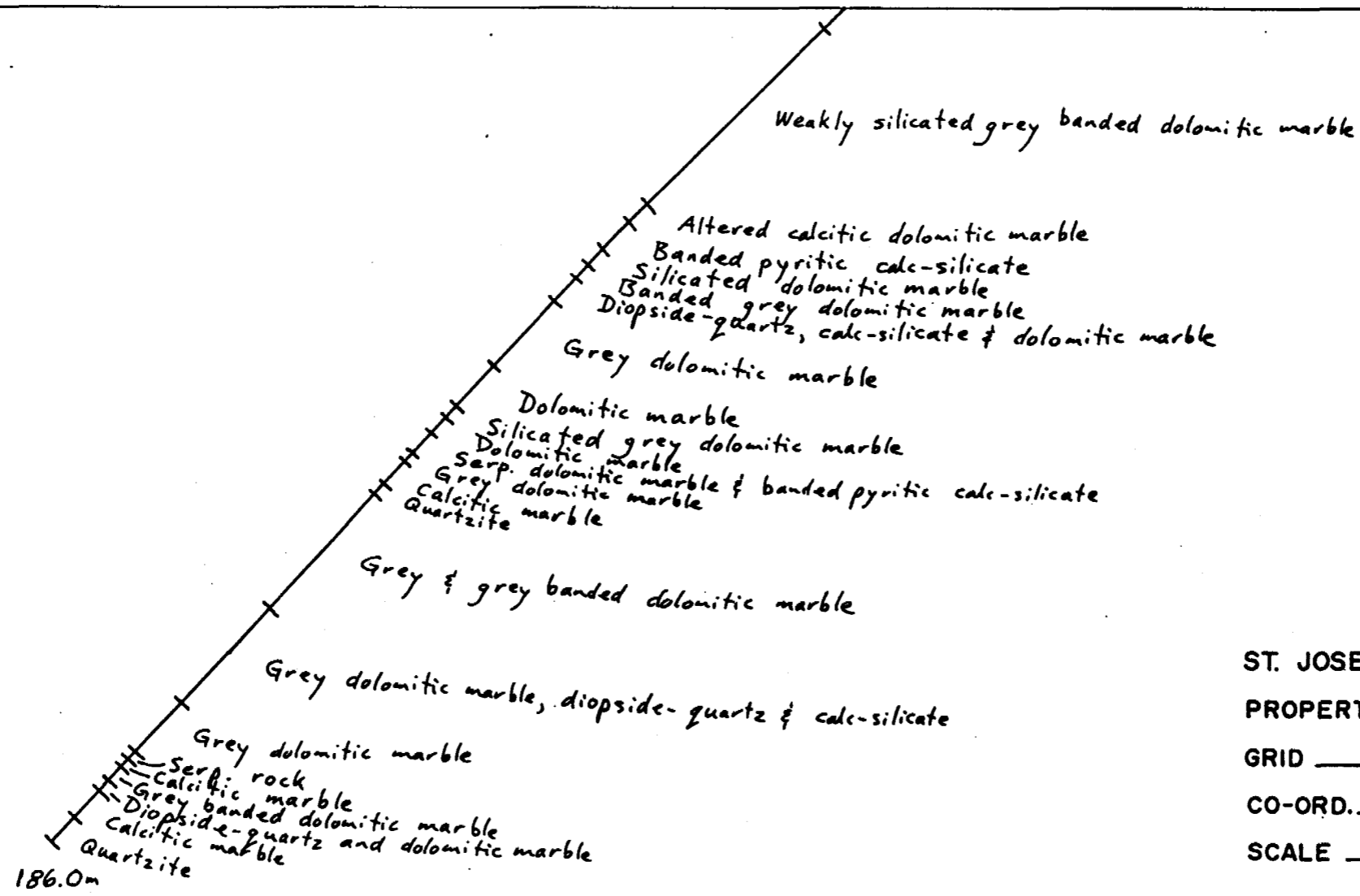


HOLE NO. S-72  
 SECTION Plane of hole



S-72

Ely. 958m



ST. JOSEPH EXPLORATIONS LIMITED  
 PROPERTY Salerno Lake  
 GRID Southwest Grid  
 CO-ORD. 6+31 N 9+68  
 SCALE 1:1000