

2.1481



31D16NE0042 2.1481 MONMOUTH

010

RECEIVED

MAY 14 1974

PROJECTS UNIT

REPORT ON THE GEOLOGY OF MONMOUTH TOWNSHIP CLAIMS

TORY HILL AREA

EASTERN ONTARIO MINING DIVISION

BY

R.T. GARVEY

IMPERIAL OIL LIMITED

TORONTO

FEBRUARY, 1974

INTRODUCTION

In May, June and July, 1973, Imperial Oil Limited staked three separate claim groups, totalling 26 claims in the Tory Hill area of southeastern Ontario. Two of the claim groups are accessible by Hwy. 121 and the Hadlington Lake road; the third by Hwy. 503 and the Bear (Glamor.) Lake road.

Geological mapping and prospecting was carried out on the claims during August and September, 1973.

GEOLOGICAL MAPPING AND PROSPECTING

Geological mapping and prospecting was done by R. Garvey from August 16th to September 13, 1973. Traverses were taken on and between claim lines and along existing roads. Outcrop maps of the claim groups made on airphoto mosaics are presented in Figs. 1, 2 and 3.

The oldest rocks in the area are the marble, paragneiss, quartzite, and amphibolite of the Grenville series. These rocks were laid down as limestones, sandy and shaly limestones, and sandstones in early Precambrian seas. The sediments were highly metamorphosed; the limestone became marble, the shaly and sandy limestones became impure silicated marble, the limy shales became amphibolites, the sandy shales became paragneiss, and the sandstone became quartzite.

The Grenville sediments were intruded by a series of plutonic rocks, the oldest of which are gabbro, diorite, and ultrabasic rocks. After this period of basic intrusion, the syenites and granites were emplaced during regional metamorphism. Cutting relations among the granites and syenites of the area indicate that more than one age of granite and syenite is present. Dikes of granite and syenite pegmatite are the youngest Precambrian rocks in the area.

RTG:rn
Feb. 28/74

Ray Harvey



TECHNICAL ASSESSMENT WORK CREDITS

Recorder Holder Imperial Oil Limited

Township or Area Monmouth Township

Type of Survey and number of
Assessment Days Credits per claim

Mining Claims

E.O. 369423 to 30 inclusive

GEOPHYSICAL

Electromagneticdays

Magnetometerdays

Radiometricdays

Induced Polarizationdays

GEOLOGICAL.....10.5.....days

GEOCHEMICAL.....days

Man days Airborne

Special Provision Ground

NOTICE OF INTENT TO BE ISSUED

- Credits have been reduced because of partial coverage of claims.
- Credits have been reduced because of corrections to work dates and figures of applicant.
- NO CREDITS have been allowed for the following mining claims as they were not sufficiently covered by the survey:

The Mining Recorder may reduce the above credits if necessary in order that the total number of approved assessment days recorded on each claim does not exceed the maximum allowed as follows: Geophysical - 80; Geological - 40; Geochemical - 40;



TECHNICAL ASSESSMENT WORK CREDITS

Recorder Holder Imperial Oil Limited

Township or Area Monmouth Township

Type of Survey and number of Assessment Days Credits per claim

Mining Claims

E.O. 370247 to 64 inclusive

GEOPHYSICAL

- Electromagneticdays
- Magnetometerdays
- Radiometricdays
- Induced Polarizationdays

.....
GEOLOGICAL..... 8.2days

GEOCHEMICAL.....days

- Man days Airborne
- Special Provision Ground

NOTICE OF INTENT TO BE ISSUED

- Credits have been reduced because of partial coverage of claims.
- Credits have been reduced because of corrections to work dates and figures of applicant.
- NO CREDITS have been allowed for the following mining claims as they were not sufficiently covered by the survey:

The Mining Recorder may reduce the above credits if necessary in order that the total number of approved assessment days recorded on each claim does not exceed the maximum allowed as follows: Geophysical - 80; Geological - 40; Geochemical - 40;

25 26 27 28 29 30 31 32 33 34 35

6 7 8 9 10 11 12 13 14 15 16 17 18 19 20

XVII

XVI

XV

XIV

XIII

XII

XI

X

IX

VIII

VII

VI

V

IV

III

II

I

Cardiff Twp. (M-59)

Glastonbury Twp. (M-95)

Anstruther Twp. (M-45)

FIG 3

FIG 1

FIG 2

XVI

21 22 23 24

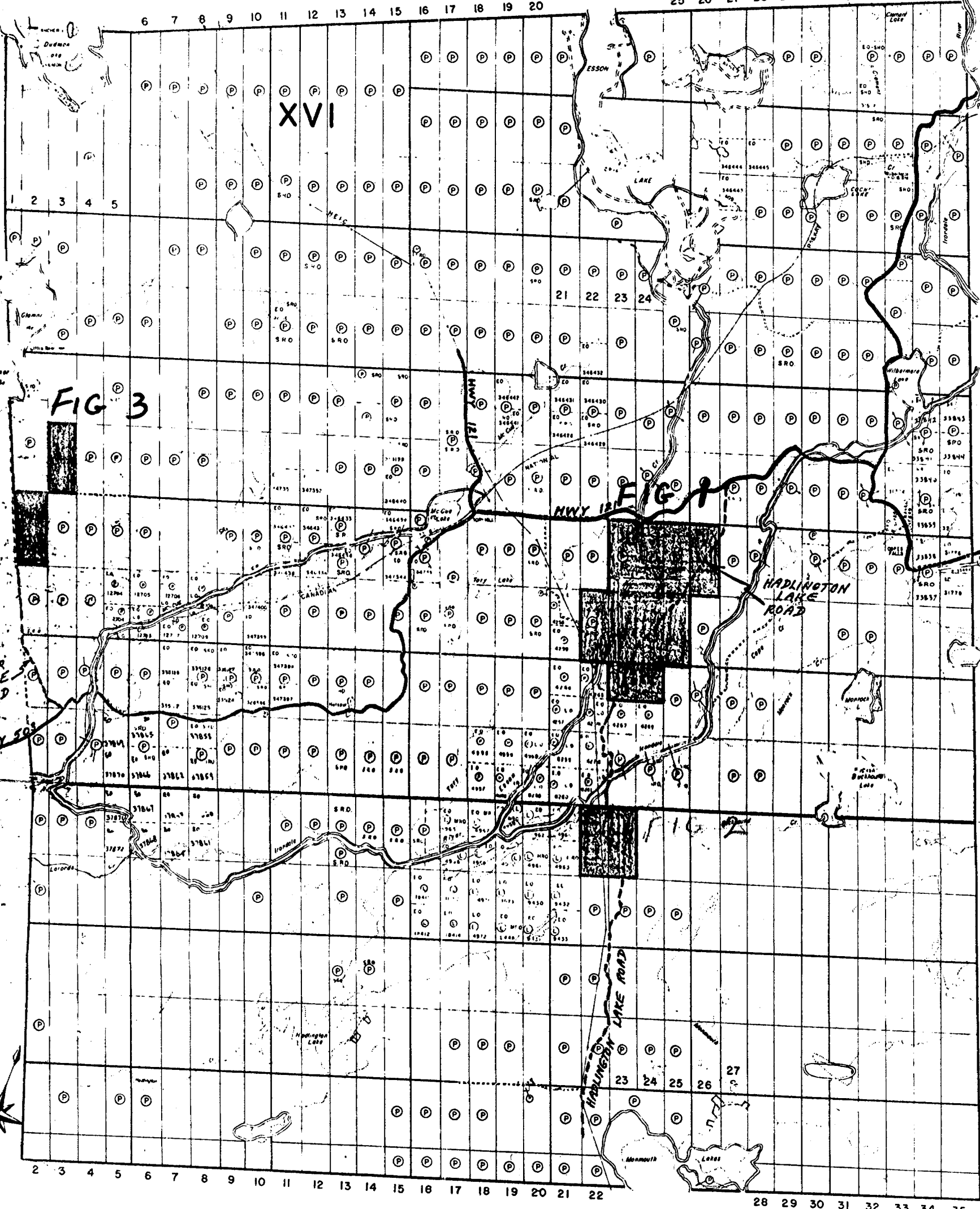
HWY 121

HADLINGTON LAKE ROAD

BEAR LAKE ROAD

HWY 50

HADLINGTON LAKE ROAD



Dudley Twp. (M-84)

LOCATION MAP

THE TOWNSHIP OF
OF

MONMOUTH

COUNTY OF
HALIBURTON

EASTERN ONTARIO
MINING DIVISION

SCALE: 1-INCH = 80 CHAINS

LEGEND

- PATENTED LAND (P)
- TOWN LAND SALE (CS)
- LEASES (L)
- LOCATED LAND (L.C.)
- LICENS OF OCCUPATION (L.O.)
- MINING RIGHTS ONLY (M.R.)
- SURFACE RIGHTS ONLY (S.R.O.)
- ROADS
- IMPROVED ROADS
- KINGS HIGHWAYS
- RAILWAYS
- POWER LINES
- MARSH OR MUSKEG
- MINES

NOTES

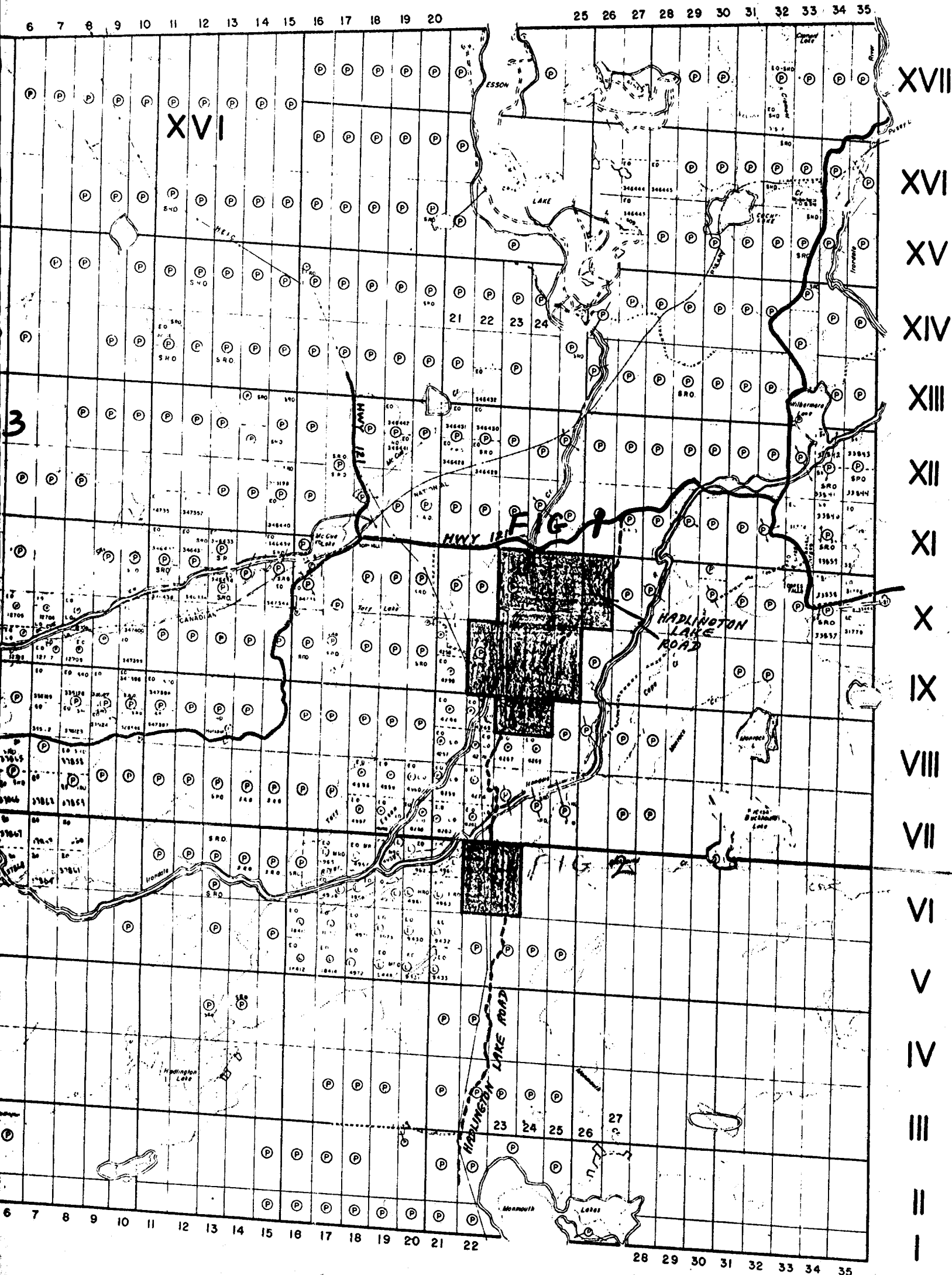
This Map is Not To Be Used
FOR SURVEY PURPOSES

400' Surface rights reservation around all lakes and rivers.

Original shoreline shown thus
F.R.I. shoreline shown thus
Patent Map shoreline shown thus

For status of summer report locations shown thus
Please contact Dept. of Lands & Forests.

Cardiff Twp. (M-59)



Anstruther Twp. (M-45)

PLAN NO.-M.164

MINISTRY OF NATURAL RESOURCES

Dudley Twp. M.84

THE TOWNSHIP OF
MONMOUTH
COUNTY OF HALIBURTON

EASTERN ONTARIO
MINING DIVISION

SCALE: 1-INCH = 40 CHAINS

LEGEND

- PATENTED LAND (P)
- CROWN LAND SALE (C.S.)
- LEASES (L)
- LOCATED LAND (Loc.)
- LICENSE OF OCCUPATION (L.O.)
- MINING RIGHTS ONLY (M.R.O.)
- SURFACE RIGHTS ONLY (S.R.O.)
- ROADS (—)
- IMPROVED ROADS (—)
- KINGS HIGHWAYS (—)
- RAILWAYS (—)
- POWER LINES (—)
- MARSH OR MUSKEG (—)
- MINES (X)

NOTES

This Map Is Not To Be Used
FOR SURVEY PURPOSES—

400' Surface rights reservation along the shores of all lakes and rivers.

Original shoreline shown thus: (wavy line)
F.R.I. shoreline shown thus: (dashed line)
Patents Map shoreline shown thus: (dotted line)

For status of summer resort locations shown thus: (circle with X)
Please contact Ministry of Natural Resources.

MINING LANDS
DATE OF ISSUE
MAY 14 1974
MINISTRY OF NATURAL RESOURCES

file - 2.1481

PLAN NO.-M.164

ONTARIO
MINISTRY OF NATURAL RESOURCES
SURVEYS AND MAPPING BRANCH

Glamorgan Twp. M.95

Cardiff Twp. M.69

XVII
XVI
XV
XIV
XIII
XII
XI
X
IX
VIII
VII
VI
V
IV
III
II
I

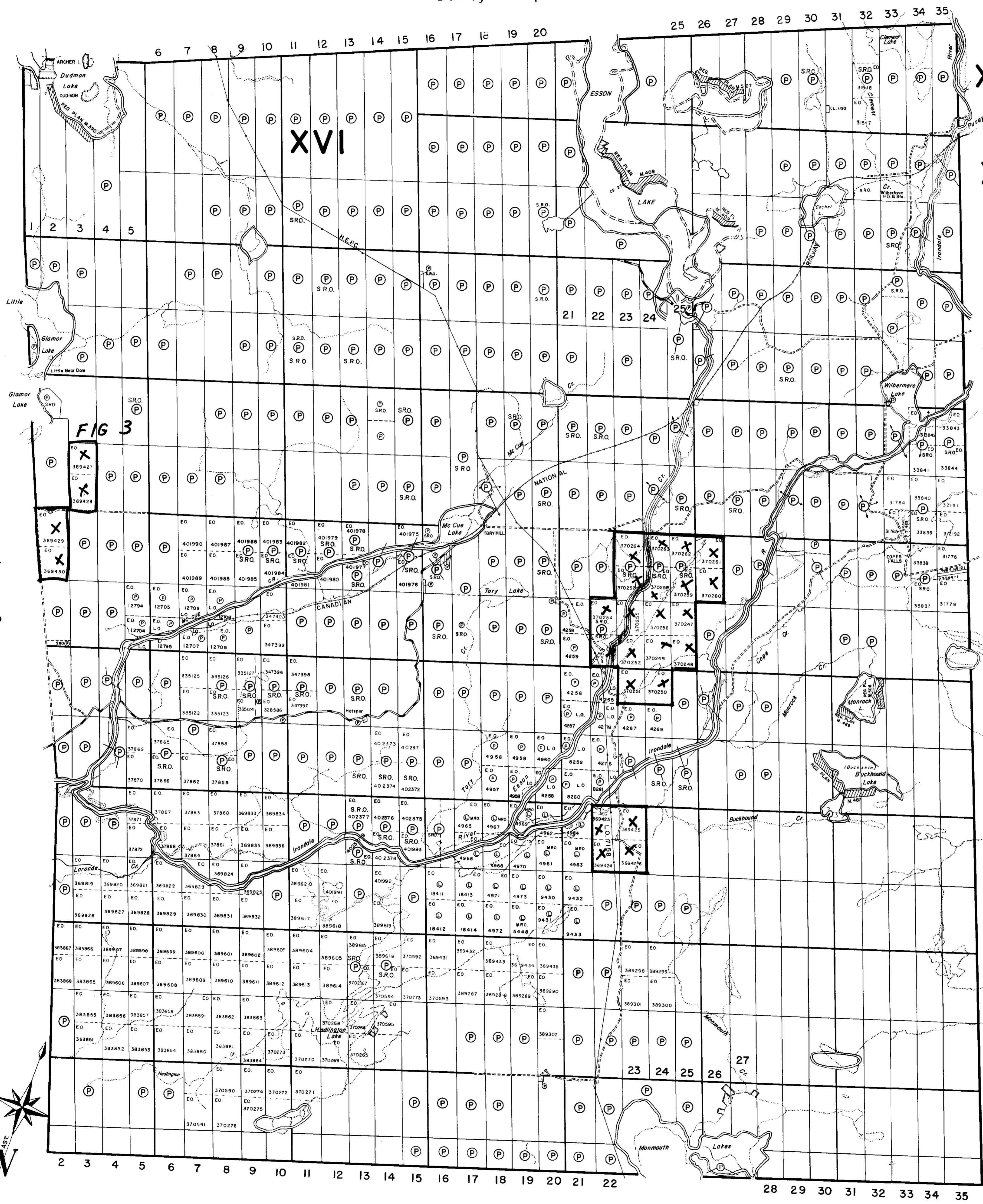
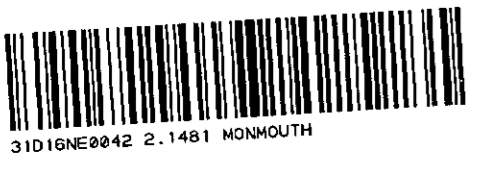


FIG 3

Anstruther Twp. M.45



200

CONC IX

HWY 121

CONC IX

CONC IX

CONC IX

SYMBOLS

- AREA OF SEARCH OUTSIDE
- BOUNDARY (CONTOURED, WRITTEN)
- GEOLOGICAL BOUNDARY OBSERVED
- GEOLOGICAL BOUNDARY POSITION INTERPRETED
- STRIKE BOUNDARY AND CORNER POST IN SECTION LINE
- ROCK TRENCH OR PIT
- PRODUCTIVE ZONE - 5% - 10% TO 100% OF AREA
- SWAMP
- STRATA OVERLAIN

LEGEND

- CEANOZOIC**
- PLEISTOCENE AND RECENT
- SAND GRAVEL AND CLAY
- UNCONFORMITY
- PRECAMBRIAN**
- PLUTONIC ROCKS**
- GRANITE GNEISS
- 6 QUAZAR WHITE GRANITE; GRANITE GNEISS
- 6B QUARTZ GRANITE; BIFURC GRANITE GNEISS
- 6R HORNBLAND GRANITE; HORNBLAND GRANITE GNEISS
- 6P GRANITE PORPHYRY; GRANITE GNEISS
- SYENITE ROCKS**
- 5 TIT AND WHITE GRANITE; SYENITE GNEISS
- 5B BIFURC SYENITE; BIFURC SYENITE GNEISS
- 5H HORNBLAND SYENITE; HORNBLAND SYENITE GNEISS
- 5P SYENITE PORPHYRY
- ULTRAMAFIC ROCKS**
- 4 PEARLSTONE
- 4B PEARLSTONE
- METASEDIMENTES**
- CARBONIFEROUS METASEDIMENTES**
- 3 CARBONIFEROUS Limestone, MARBLE
- 3B DIAPYCN MARBLE
- 3C GRANITE MARBLE
- 3D FINEGRANITE MARBLE
- 3E GARNET-SYENITE ROCK
- 3F SYENITE GARNET-DIAPYCN-CALCITE ROCK
- ORIGINOUS-AMPHIBOLITE GROUP**
- 2 HORNBLAND-AMPHIBOLITE; HORNBLAND-RICH GNEISS
- 2B HORNBLAND-AMPHIBOLITE GNEISS
- 2F PARAGNEISS; QUARTZ-PHOSPHATIC PARAGNEISS



FIG. 1

IMPERIAL OIL LIMITED
 MONMOUTH TWP
 GEOLOGICAL MAP OF
 NORTH BUCKSKIN CLAIM
 GROUP, TONY HILL PROSPECT

SCALE 1" = 100'
 DATE FEB 1974
 DRAWN BY R. BARVE

69-4440
 46-46

2.14.11



T
N

CONT. SHE.

SYMBOLS

- AREA OF INTEREST - OUTCROP
- DISSOCIITY (INCLINED, VERTICAL)
- GEOMETRICAL BOUNDARY, OBSERVED
- LOGICAL BOUNDARY, POTENTIAL INTERPRETED
- CLAIM BOUNDARY AND CORNER POINTS (AREA TRAPPEL)
- INFERRED ZONE - 5% - 10% TO BACKGROUND (BACKGROUND Hatched Area)
- OVERLAP

LEGEND

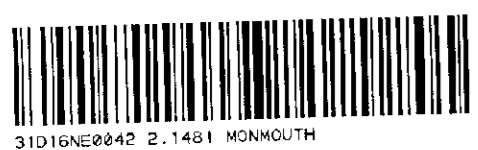
- 5 5 GARY TO BAY STONED GRANITE
- 3 3 BAY TO BAY GRANITE
- 3 3 PALMISTON GRANITE
- 2 2 SHALE
- 1 1 MARBLE
- Q QUARTZ
- V VEINS

FIG 2

IMPERIAL OIL LIMITED
 MONMOUTH TWP.
 GEOLOGICAL MAP OF
 SOUTH BUCKSKIN CLAIM
 GROUP, TORY HILL PROSPECT

SCALE: 1" = 400'
 DATE: FEB. 1974.
 DRAWN BY: R. GARY

R. G. Gary





SYMBOLS

- AREA OF BEDROCK OUTCROP.
- GNEISSOSITY (INCLINED, VERTICAL).
- GEOLOGICAL BOUNDARY, OBSERVED.
- GEOLOGICAL BOUNDARY, POSITION INTERPRETED.
- CLAIM BOUNDARY AND CORNER POST AND TRAVERSE LINE.
- RADIACTIVE ZONE, +5% RATIO TO BACKGROUND RADIOACTIVITY (BACKGROUND RADIOACTIVITY - 100 CPS).
- SWATH.
- GLACIAL OVERBURDEN.

LEGEND

- 5 GREY TO PINK SYENITE PEGMATITE.
- 5g GREY TO PINK GRANITE PEGMATITE.
- 4 INTRUSIVE SYENITE.
- 3 FELDSPATHIC PARAGNEISS.
3a FINABLE PARAGNEISS.
- 2 SCORRE.
- 1 MARBLE.

FIG. 3

IMPERIAL OIL LIMITED
 GEOLOGICAL MAP OF
 GLAMOR LAKE CLAIM
 GROUP, TORY HILL PROSPECT.
 SCALE 1" = 400'
 DATE: FEBRUARY 1974
 DRAWN BY: R. CARVEY

