



31D16NE0430 37 CARDIFF

010

Diamond Drilling

Township of CARDIFF

Report NO 37

Work performed by: Kemp Uranium Mines Limited

A

Claim NO	Hole NO	Footage	Date	Note
EO 5915	1	312.0'	Unknown, 1955	
	2	577.0'	Feb/55	
EO 5917	3	375.0'	Feb/55	
	4	450.0'	Feb/55	
	5	564.0'	Feb/55	
	6	197.0'	Unknown, 1955	
	7	407.0'	Unknown, 1955	

Notes:

DIAMOND DRILL RECORD

PROPERTY Kemp Uranium Mines Ltd. **HOLE NO.** 2

SHEET NUMBER 1 SECTION FROM _____ TO _____ STARTED _____
 LATITUDE 215 N. DATUM _____ COMPLETED Feb. 12, 1955
 DEPARTURE 1300 W. BEARING 90 to 3 N. ULTIMATE DEPTH 577'
 ELEVATION 1002.5' DIP 45 N. PROPOSED DEPTH _____

DEPTH FEET	FORMATION	SAMPLE No.	WIDTH OF SAMPLE	GOLD †	SLUDGE GOLD †
0-12	Casing				
12-25	Micaceous cryst. limestone,				
25-42	Do. Do. Do.				
42-50	Grey cryst. limestone.				
50-75	Do. Do.				
75-76.4	Do. Do.				
76.4-77.4	Paragneiss, 400 to 8000 C.P.M.	11226	2.4'	.26 U	308
77.4-80	Saidic granite dyke.				
80-86	Do. Do.				
86-88	Pink calcite				
88-100	Granite dyke.				
100-120.7	Do. Do.				
120.7-125	Grey paragneiss				
125-147	Do.				
147-150	Paragneiss with pink calcite. 2-3 x B.G.				
150-155	Do. Do. 2 x B.G.				
155-160	Grey paragneiss. 2-5 x B.G.	11227	5.0	.03	
160-165	Do. 5-7 x B.G.	11228	5.0	.01	
165-168	Do.				
168.70	White pink cryst. limestone				
170-174	Do. Do.				

N.M.P., TORONTO—STOCK FORM NO. 501 REV. 12/51

DRILLED BY

SIGNED

DIAMOND DRILL RECORD

PROPERTY Kemp Uranium Mines Ltd. HOLE NO. 2

SHEET NUMBER 2 SECTION FROM _____ TO _____ STARTED _____
 LATITUDE 215 N. DATUM _____ COMPLETED Feb 12, 1955
 DEPARTURE 1300 W. BEARING 90 to 3 N. ULTIMATE DEPTH 577'
 ELEVATION 1002.5' DIP 45 N. PROPOSED DEPTH _____

DEPTH FEET	FORMATION	SAMPLE NO.	WIDTH OF SAMPLE	GOLD \$	SLUDGE GOLD \$
174-175	Paragneiss.				
175-200	Pink grey cryst. limestone				
200-225	White grey Do.				
225-250	Do. Do.				
250-264.4	Do. Do.				
264.4-275	Fine red syenite				
275-280.5	Do. Do.				
280.5-300	Whitish grey dyke				
300-323	Do. Do. (Limey)				
323-325	Grey cryst. limestone				
325-350	Do. Do.				
350-375	Do. Do. Micaceous in places.				
375-400	Do. Do. Do.				
400-425	Grey pink cryst. limestone				
425-426.3	Crystalline limestone				
426.3-429	Paragneiss.				
429-450	Cryst. limestone, paragneiss inclusions				
450-475	Cryst. limestone.				
475-480	Do.				
480-485	Do.				
485-490	n Do.				

DRILLED BY

SIGNED

DIAMOND DRILL RECORD

PROPERTY Kemp Uranium Mines Ltd. HOLE NO. 3

SHEET NUMBER 1 SECTION FROM _____ TO _____ STARTED _____
 LATITUDE 213.7 N. DATUM _____ COMPLETED Feb. 14, 1955.
 DEPARTURE 1000W. BEARING North ULTIMATE DEPTH 375'
 ELEVATION 976.60' DIP 45 N. PROPOSED DEPTH _____

DEPTH FEET	FORMATION	SAMPLE No.	WIDTH OF SAMPLE	GOLD \$	SLUDGE GOLD \$
0-18	Casing.				
18-25	Grey micaceous cryst. limestone				
25-49	Do. Do.				
49-75	Granite dyke				
75-100	Do.				
100-120	Syenite dyke. 1-2 x B.G.				
120-150	Cryst. limestone complex.				
150-155	Paragneiss.				
155-160	Do. Up to 3 x B.G.				
160-165	Do. Up to 5 x B.G.				
165-185	Do.				
185-190	Do. At 187.5' (2" - 2000 C.P.M.)	11230	5.0'	.05	
190-200	Cryst. limestone.				
200-204	Do.				
204-205	Red syenite 3 x B.G.	11231	1.5'	.01	
205-207.6	Cryst. limestone.				
207.6-209	Red syenite 2-3 x B.G.				
209-210	Cryst. limestone				
210-214.5	Do.				
214.5-218	Red syenite.				
218-225	Cryst. limestone.				

DIAMOND DRILL RECORD

PROPERTY Kemp Uranium Mines Ltd. HOLE NO. 4

SHEET NUMBER 1 SECTION FROM _____ TO _____ STARTED Feb. 19, 1955.
 LATITUDE 305 N. DATUM _____ COMPLETED _____
 DEPARTURE 978 W. BEARING Parralell to 3 N. ULTIMATE DEPTH 450'
 ELEVATION 958.4' DIP 35 W. PROPOSED DEPTH _____

DEPTH FEET	FORMATION	SAMPLE NO.	WIDTH OF SAMPLE	GOLD \$	SLUDGE GOLD \$
0-9	Casing.				
9-25	Grey Cryst. limestone. 1-2 x B.G.				
25-40	Do. Do.				
40-49.4	Do. Do. Slight R. A.				
49.4-50	Syenite dyke Do.				
50-75	Do. Do.				
75-81	Do. Do.				
81-100	Green and grey paragneiss, some syenite inclusions Slight R. A.				
100-123.3	Grey paragneiss. Do.				
123.3-125	Pink calcite and pyroxenite. 5-15 x B.G.				
125-131.7	Do. Do. 5-7 x B.G.	11232	8.4	.04	
131.7-135	Grey paragneiss. Slight R. A.				
135-140	Do. Do. Do.				
140-145	Do. Do. Limey 3-5 x B.G.	11233	5.0'	Trace	
145-150	Do. Do.				
150-155	Paragneiss, pyroxenite. 4-10 x B.G.	11234	5.0	.01	
155-160	Limey complex, paragneiss, pyroxenite	11235	5.0'	.051	
160-165	Paragneiss, pyroxenite. 4-5 x B.G.	11236	5.0	Trace	
165-168	Do. Do. Limey 3-5 x B.G.	11237	3.0'	Trace	
168-175	Syenite dyke 3-5 x B.G.	11238	8.0'	.01	

N.M.P. TORONTO-STOCK FORM NO. 501 REV. 12/51

DRILLED BY

SIGNED

DIAMOND DRILL RECORD

PROPERTY Kemp Uranium Mines Ltd. HOLE NO. 4

SHEET NUMBER 2 SECTION FROM _____ TO _____ STARTED Feb. 19, 1955
 LATITUDE 305 N. DATUM _____ COMPLETED _____
 DEPARTURE 978 W. BEARING Parallel to 3 N. ULTIMATE DEPTH 450'
 ELEVATION 958.4' DIP 35 W. PROPOSED DEPTH _____

DEPTH FEET	FORMATION	SAMPLE NO.	WIDTH OF SAMPLE	GOLD \$	SLUDGE GOLD \$
175-2000	Grey paragneiss. Slight R.A.				
200-225	Do. Do.				
225-250	Do. Do.				
250-258.5	Do. Do.				
258.5-260	Cryst. limestone complex. 5-15 x B.G.				
260-265	Pink Do. mostly calcite 2-4 x B.G.	11239	7.5'	Trace	
265-268.5	Do. Do. 1-2 x B.G.				
268.5-274	Red syenite. 4-5 x B.G.	11240	6.5'	.014	
274-275	Pink cryst limestone 2 x B.G.				
275-280	Do. Do. Do.				
280-286.8	Do. Do. Do.				
286.8-287.8	Cryst. limestone. 287-290' 5 x B.G.	11241	3.0'	.025	
287.8-300	Red syenite 3-5 x B.G.	11242,	11243.	.007	
300-303	Do. 3-5 x B.G.	11244	3.0'	.026	
303-307.5	Pink calcite				
307.5-321.6	Red syenite, broken up core. 2-3 x B.G.				
321.6-324.5	Pink calcite Do.				
324.5-325	Red syenite 3 x B.G.				
325-325.8	Syenite.				
325 -350	Pink calcite with fine mica. Slight R.A.				
350-355	Calcite and pyroxenite Do.				

DIAMOND DRILL RECORD

PROPERTY Kemp Uranium Mines Ltd. HOLE NO. 5

SHEET NUMBER 1 SECTION FROM _____ TO _____ STARTED Feb. 27, 1955.
 LATITUDE 312 N. DATUM _____ COMPLETED _____
 DEPARTURE _____ BEARING Parallel tp 3 N. ULTIMATE DEPTH 564'
 ELEVATION 957.50' DIP 45 E. PROPOSED DEPTH _____

DEPTH FEET	FORMATION	SAMPLE NO.	WIDTH OF SAMPLE	GOLD \$	SLUDGE GOLD \$
0-10	Casing.				
10-25	Grey cryst. limestone				
25-65	Do. Do. 2 x B.G.				
65-70	Do. Do. 5-15 x B.G.	101	5.0'	.04	
70-75	Do. Do. Complex 5-8 x B.G.	102	5.0'	.02	
75-83	Limestone complex. 3-5 x B.G.	103	8.0'	.02	
83-100	Do. Do.				
100-105	Limestone, pyroxenite complex. 5-15 x B.G.	104	5.0'	.02	
105-110	Do. Do. 3-5 x B.G.	105	5.0'	.03	
110-115	Do. Do. Do.	106	5.0'	Trace	
115-120	Do. Do. 3-15 x B.G.	107	5.0'	Trace	
120-170	Limestone, paragneiss complex. Slight R.A.				
170-175	Limestone, paragneiss, pyroxenite 5-15 x B.G.	108	5.0'	.05	
175-181	Do. Do. Do. 5-15 x B.G.	109	6.0'	Trace	
181-195	Do. Do. Do. Slight R.A.				
195-337.5	Limey grey paragneiss. Do.				
337.5-450	Grey pinkish cryst. limestone. Do.				
450-564	Grey limestone, paragneiss inclusions.				
	End of hole.				

DIAMOND DRILL RECORD

PROPERTY Kemp Uranium Mines Ltd. HOLE NO. 6

SHEET NUMBER 1 SECTION FROM _____ TO _____ STARTED _____

LATITUDE 308 N. DATUM _____ COMPLETED _____

DEPARTURE 973 W. BEARING N. 45 E to 3 N, ULTIMATE DEPTH 197'

ELEVATION 957.50' DIP 45 N. E. PROPOSED DEPTH _____

DEPTH FEET	FORMATION	SAMPLE NO.	WIDTH OF SAMPLE	GOLD \$	SLUDGE GOLD \$		
0-11	Casing.						
11-25	Cryst. limestone 3 x B.G. at contact						
25-41	Paragneiss						
41-47	Cryst. limestone & pyroxene. 1-2 x B.G.						
m 47-50	Paragneiss						
50-51	Calcite						
51-56	Paragneiss.						
56-59	Cryst. limestone 2 x B.G.						
59-67	Paragneiss Do.						
67-70	Cryst. limestone Do.						
70-72	Paragneiss.						
72-73	Calcite with pyroxenite. 2 x B.G.						
73-75	Paragneiss						
75-80	Grey granite	11246	5.0'	.007			
80-85	Do.						
85-90	Do. with 1.0' red granite 6 x B.G.	11247	5.0'	.017			
90-105	Paragneiss.						
105-132	Cryst. limestone						
132-133	Paragneiss						
33 35	Cryst. limestone						
135-136	Paragneiss.						

DIAMOND DRILL RECORD

PROPERTY Kemp Uranium Mines Ltd. HOLE NO. 7

SHEET NUMBER 1 SECTION FROM _____ TO _____ STARTED _____

LATITUDE 200 N. DATUM _____ COMPLETED _____

DEPARTURE 100 W. BEARING Parallel to boundary N. 21 W. ULTIMATE DEPTH 407'

ELEVATION 979.0' DIP 50 S. PROPOSED DEPTH _____

DEPTH FEET	FORMATION	SAMPLE NO.	WIDTH OF SAMPLE	GOLD \$	SLUDGE GOLD \$		
0-15	Casing						
15-65	Cryst. limestone						
65-66	Paragneiss						
66-90	Cryst. limestone						
90-91	Do. and mica 2 x B.G.						
91-125	Do.						
125-127	Paragneiss						
127-129	Cryst. limestone						
129-133	Paragneiss						
133-150	Cryst. limestone, syenite at 147' 2 x B.G.						
150-158	Do.						
158-161	Paragneiss						
161-170	Cryst. limestone						
170-183	Paragneiss with pyroxene						
173-178	White calcite						
178-180	Pink syenite with pyroxene						
180-181	White calcite						
181-187	Syenite. 2 x B.G.						
187-188	White calcite						
188- 0	Paragneiss with pyroxene.						
200-211	Do.						

N.M.P., TORONTO--STOCK FORM NO. 501 REV. 12/51

DRILLED BY _____ SIGNED _____

DIAMOND DRILL RECORD

PROPERTY Kemp Uranium Mines Ltd. HOLE NO. 7

SHEET NUMBER 2 SECTION FROM _____ TO _____ STARTED _____
 LATITUDE 200 N. DATUM _____ COMPLETED _____
 DEPARTURE 100 W. BEARING Parallel to boundary N.21 W. ULTIMATE DEPTH 407
 ELEVATION 979.0' DIP 50 S. PROPOSED DEPTH _____

DEPTH FEET	FORMATION	SAMPLE NO.	WIDTH OF SAMPLE	GOLD \$	SLUDGE GOLD \$
211-227	Syenite with pyroxenite. 2-4 x B.G.				
227-232	Pyroxenite				
232-235	Syenite. Slight R.A. 2 x B.G.				
235-236	Pyroxenite Do. Do.				
236-250	Cryst. limestone Do.				
250-297	Do. Do.				
297-303	Paragneiss.				
303-324	Cryst. limestone 1-2 x B.G.				
324-330	Paragneiss.				
330-332	Syenite 2-3 x B.G.				
332-375	Cryst. limestone 1-2 x B.G.				
375-377	Paragneiss				
377-396	Cryst. limestone				
396-399	Paragneiss				
399-402	Cryst. limestone				
402-403	Paragneiss.				
403-407	Cryst. limestone.				
	End of hole.				

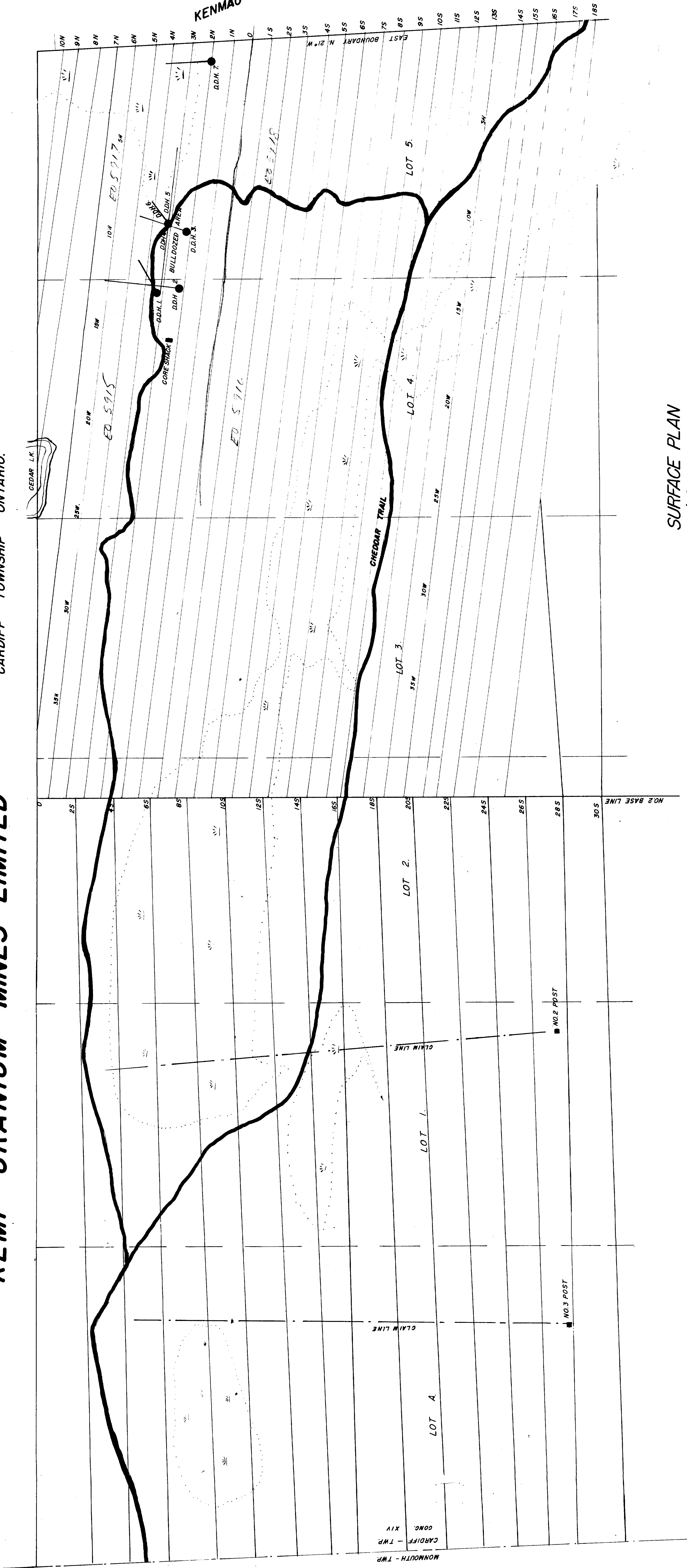
DRILLED BY

SIGNED

KEMP URANIUM MINES LIMITED

CARDIFF TOWNSHIP ONTARIO.

KENMAC CHIBOUGAMAU MINES LTD.



SURFACE PLAN
200' = 1" JULY 1955
H.F. BENGRIE

