



31D16NE0506 73 CARDIFF

010

Diamond Drilling

Township of CARDIFF

Report NO: 73 - 6

Work performed by: E.T. Hogan

| Claim NO  | Hole NO | Footage | Date    | Note   |
|-----------|---------|---------|---------|--------|
| E0 369901 | 51521-0 | 124'    | Sept/75 | (1)(2) |

Notes:

(1) #63-75

(2) Report replaced, June 22/90 - material from Cancelled claims

DATE PROCESSED OCT 22, 1975  
 CHK'D.....

BOREHOLE RECORD  
 \*\*\*\*\*  
 GRID

BOREHOLE# 51521-0 HOGAN  
 PROPERTY HOGAN  
 NTS# 31DICE  
 SH# ANDM# DEPTH AZIMUTH GRAFING DIP ELEVATION LATITUDE DEPARTURE  
 00124 340 00 360 00 -45 00 N000050 E000300  
 LOGGED BY...FPECKELTON  
 STARTED...SPT 23, 1975 COMPLETED...SPT 29, 1975  
 INCLINATION AND TPOARI TESTS

DEPTH AZIMUTH DIP DEPTH AZIMUTH DIP DEPTH AZIMUTH DIP  
 \*\*\*\*\*

COMMENTS  
 DRILLED IEX BY CANICO WINKIE BY L KEARNEY ON CLAIM EO 369901  
 650 FEET SOUTH AND 300 FEET EAST OF POST 4 ALL CASING REMOVED  
 SAMPLE ENTRIES  
 \*\*\*\*\*

| DEPTH  | LENGTH | MNZN ROCK | DESCRIPTION   | ANG |
|--------|--------|-----------|---|-----|
| 0000.0 | 0.0    |           | COLLAR  |     |
| 0007.2 | 7.2    | GR        | OVERBURDEN  |     |
| 0007.9 | 0.7    | GR        | MG DK MASS WITH MINOR MT CORE HLY<br>BRCKEN AND GRND 30-40 CPS  |     |
| 0009.5 | 1.6    | GR        | MG BRICK RED WITH MINOR PIOT AND<br>PRXN RARE CALC AND MT HLY BRKN AND<br>GRND 40-50 CPS  |     |
| 0011.5 | 2.0    | GR        | MG PK MASS WITH MINOR PRXN AND MT<br>LAST 0.6 FEET HLY BRKN MG TO CG WITH<br>BRICK RED FSP 30 TO 40 CPS   |     |
| 0015.6 | 4.1    | LC        | CORE LOSS   |     |
| 0020.0 | 4.4    | GR        | MG LOCL CG BUFF TO RED MINOR PRXN IN<br>5MM RNDG GRNS IN LOCL ACCUMULATIONS<br>UP TO 20 PCNT 30 TO 40 CPS   |     |
| 0021.0 | 1.0    | LC        | CORE LOSS   |     |
| 0022.5 | 1.5    | PEG       | CG TO MG BRICK RED SYNT PEG MASS<br>WITH CALC FRCT FLG UP TO 2CM LCT<br>GRNLX TO MG CORE HLY BRKN 30 TO 40<br>CPS   |     |
| 0023.2 | 0.7    | GR        | MG BRICK RED MASS MNOR PRXN AND MT<br>UPPR CT GRNLX FROM SYNT LCT INDC AT<br>15 DEG 30 TO 40 CPS  |     |
| 0024.8 | 1.6    | GR        | MG BUFF TO PK WITH UP TO 25 PCNT<br>PRXN SLLY MTC LOWER 0.4 FT GRNLX 27<br>TO CG 30 TO 40 CPS SHR   |     |
| 0029.5 | 4.7    | GR        | MG BRICK RED MASS MNOR PRXN AND PARE 40<br>SPKS MT AND PY MT IS IN ADRL GRNS<br>AND MASSES UP TO 5CM MG BUFF COLORED<br>ZONE 27.1 TO 27.7 SHR<br>30 TO 40 CPS |     |
| 0030.9 | 1.4    | PEG       | CG WHT TO DK RED WITH COARSE CALC<br>AND PYXN INCUS LOWR 0.4 FT QTZ VEIN<br>LCT SHARP 20 DEG 30 TO 40 CPS WITH<br>SPOT 60 CPS                                 |     |
| 0033.4 | 2.5    | GR        | MG TO CG BUFF TO BRICK RED MASS WITH 15<br>MNCR PRXN AND MT CG ZONE LOWER 0.85 55<br>FT LCT SHAPP BUT GRND 30 TO<br>40 CPS SHRS                               |     |

ONTARIO GEOLOGICAL SURVEY  
 ASSESSMENT FILES  
 OFFICE  
 APR 23 1990  
 RECEIVED

MINING RECORDS OFFICE - TORONTO  
 RECEIVED  
 OCT 23 1975 PM  
 7 18 10 AM 11 12 11 2 3 4 5 6

DEPTH LENGTH

MNZN ROCK

DESCRIPTION

ANG

0036.5

3.1

MRBL DIOP MED TO CG WHT WITH GRN DIOP IN IREG MASSES AND GRNS 1 TO 10 MM UCT SHARP @ 90DG LCT IDSC CORE LOSS 34.2 TO 36.1 30 TO 40 CPS

0037.9

1.4

SKRN FG GPLR GRN GY MAINLY QTZ AND DIOP WITH MNOR GAR BIOT AND PY SLLY CALC LCT SHARP AT 22 DEG 30 TO 40 CPS SHPS

0041.5

3.6

MRBL DIOP AS 36.5 DIOP IS LT GRN IN URDL XTLS AND AROL MASSES UP TO 2 CM CALC COARSELY CRYSTALLINE RARE SPECKS PY 30 TO 40 CPS

0049.6

8.1

MRBL DIOP MG DITTO 30 TO 40 CPS SHRS

0050.6

1.0

MRBL DIOP CG DITTO 40 TO 90 CPS

0052.7

2.1

MRBL DIOP CG MOTTLED WHT AND GRN DIOP IN URDL LT GRN GRNS UP TO 50 PCNT OF RK MNOR SPKS PY CALC LOCL PK 30 TO 40 CPS

0053.4

0.7

MRBL SLFD FG GY GLR WKLY TO MODY CALC WITH RARE SPKS PY AND MNOR GAR UPPER AND LCT IDSC 30 TO 40 CPS

0054.9

1.5

MRBL DIOP CG MLD GRN AND WHT XTLS CALC WITH IREG MASSES DIOP AND IREG BLR CP PD PY 3 CM LONG AT 54.5 30 TO 40 CPS

0056.0

1.1

MRBL SLCS FG BUFF GLR MCDY CALC AND SLLY GRZO WITH MNOR PRXN GT AND MVVM SPKS PY TRGT 30 TO 40 CPS

0061.0

5.0

MRBL DIOP CG WHT CALC XTLS WITH GRN DIOP XTLS AND MASSES UP TO ICM- ASSR PY AND MT AND SLFD PATCHES TRGT RCMG DIOP RICH TOWARDS GRNLX LCT CPE LOSS 58.3 TO 59.4 30 TO 40 CPS FN TO MG GY GLR CMPD OF QTZ AND CALC WITH MNOR BIOT DIOP AND GY MVVM 25

0066.0

5.0

SKN PY TRGT UCT GRNLX 30 TO 40 CPS SHRS AS AT 66.0 BUT WKLY FOTD 30 TO 40 CPS

0071.6

5.6

SKN MG GY WKLY TO STGL FOTD CMPD OF QTZ WITH MNOR DIOP GT AND BIOT WKLY CALC LOCAL FOTN FROM BIOT MVVM PY TRGT LOCL MVW 5 TO 10 PCNT PY 30 TO 40 CPS FOTM

0076.0

4.4

SKN MG DITTO LCT FAIRLY SHARP AT 075 DEG 30 TO 40 CPS

0080.7

4.7

MRBL BNDS SLFD FN TO MG GY TO BUFF SLFD AND GRZO MRBL WKLY CALC WITH DISS PY OR MT TRGT AND RARE LABRADORITE BIOT AND GT ALR WITH BNDS CG MRBL WITH GRN XTLS AND MASSES DIOP UP TO ICM AND GRNS QTZ AND SPKS PY PO 30 TO 40 CPS

0085.3

4.6

SKN DIOP FN TO MG GRP TO VERY WKLY FOTD WHT TO GRN HNGS CPSN PREL DIOP CALC AND QTZ WITH MNOR GT AND MVVM PY

0086.6

1.3

SKN DIOP FN TO MG GRP TO VERY WKLY FOTD WHT TO GRN HNGS CPSN PREL DIOP CALC AND QTZ WITH MNOR GT AND MVVM PY

| DEPTH            | LENGTH | MNZN ROCK | DESCRIPTION   | ANG |
|------------------|--------|-----------|---|-----|
| 0089.3           | 2.7    | MVW MRBL  | TRGT DIOP IN GPNS AND MASSES IMM TO 3CM LOWR 0.2 FT MG GR INJC WITH IDSC CT 30 TO 40 CPS SHE  |     |
| 0091.9           | 2.6    | SKN       | DIOP CG AS AT 52.7 PUT PY PD CP LOCL 15 PCNT 1 HEM BLEB AFTER PY 15 MM UPPER 0.3 FT 100 TO 300 CPS WITH 3MM URANTHORITE XTLS LESS THAN 1 PCNT 30 TO 300 CPS OVER TOTAL LENGTH |     |
| 0093.0           | 1.1    | MRBL      | DIOP AS AT 88.6 EXCEPT MINOR BIOT 30 TO 40 CPS  |     |
| 0094.5           | 1.5    | SKN       | DIOP CG AS 61.0 30 TO 40 CPS  |     |
| 0095.7           | 1.2    | MRBL      | DIOP BIOT AS 91.9 30 TO 40 CPS  |     |
| 0101.0           | 5.3    | SKN       | DIOP BIOT VCG WITH RANDOMLY ORIENTED BIOT FLAKES UP TO 2CM DIOP MASSES UP TO 3CM AND MINOR QTZ UPPER AND LCT IDSC 30 TO 40 CPS  |     |
| 0103.5           | 2.5    | SKN       | DIOP BIOT AS 94.5 PUT WITH CALC PY INCL 2CM WIDE 30 TO 40 CPS   |     |
| 0104.2           | 0.7    | SKN       | DIOP MED TO CG DIOP 40 TO 80 PCNT OF PK WITH THE REMAINDER MNLV CALC WITH MNOR GT AND QTZ WITH OCC SPKS PY 40 TO 70 CPS   |     |
| 0108.9           | 4.7    | SKN       | DIOP CG DITTO WITH RARE HEM GRATNS LOCL BRICK PED HEM STAIN ON CALC NO VISIBLE RDCV MIN 140 TO 700 CPS  |     |
| 0109.6           | 0.7    | LC        | DIOP AS 88.6 BUT VERY CALC LOCL 40 TO 50 CPS  |     |
| 0110.0           | 0.4    | MRBL      | CORE LOSS   |     |
| 0110.7           | 0.7    | LC        | SICS TO GY GRLR PRDL QTZ WITH MNOR DIOP AND GT SLLY CLCR CORE HLY BRKN 30 TO 40 CPS   |     |
| 0111.0           | 0.3    | GR        | COPE LOSS   |     |
| 0114.4           | 3.4    | SKN       | MG PK MASS RARE PY AND PRXN CORE HLY BRKN 40 CPS  |     |
| 0117.0           | 2.6    | GR        | DIOP AS 88.6 40 CPS   |     |
| 0124.0           | 7.0    | SKN       | PK MASS IREG PRXN MASSES UP TO 2CM AND RARE PY UPPER AND LCT SHARP AT 60 AND 70 DEG RESP 40 CPS   |     |
|                  |        |           | DIOP AS 88.6 HLY TO STGL FOTD SHRS 60 40 CPS FOH 30   |     |
| BOREHOLE SUMMARY |        |           |   |     |
| *****            |        |           |   |     |
| FOOTAGE          | MNZN   | ROCK      |   |     |
| 0007.2           |        | GR        |   |     |
| 0011.5           |        | LC        |   |     |
| 0015.6           |        | GR        |   |     |
| 0020.0           |        |           |   |     |

0021.0 LC  
0022.5 PEG  
0029.5 GR  
0030.9 PEG  
0033.4 GR  
0036.5 MRBL  
0037.9 SKRN  
0061.0 MPRL  
0080.7 SKN  
0085.3 MRBL  
0086.6 SKN  
0093.3 MVH  
0093.3 MRBL  
0091.9 SKN  
0093.0 MRBL  
0094.5 SKN  
0095.7 MRBL  
0108.9 SKN  
0109.6 LC  
0110.0 MRBL  
0110.7 LC  
0111.0 GR  
0114.4 SKN  
0117.0 GR  
0124.0 SKN

EO 3-206

Lot 3  
Lot 4

EO 3904

(P)

Lot 4  
Lot 5

EO 12798

(L)

M.R.O.

EO 369902

1600'

200'

650'

BH. S1521-0

CLAIM  
EO. 369901

1320' ±

1600' ±

Conc. XV  
Conc. XIV

(P)

1320' ±

EO 402525

EO 402526

LOCATION SKETCH  
BOREHOLE : S1521-0  
Located on EO 369901  
N 1/2 Lot 4, Conc. XIV  
CARROLL TWP  
EASTERN ONTARIO M.D.  
Scale : 1 inch = 400 ft.

#63

EO 369901



31D16NE0506 73 CARDIFF

900

THE MINING ACT REPORT OF WORK

type of work to be recorded.

To the Recorder of Eastern Ontario Mining Division

I, E. T. Hogan name of Recorded Holder A 36296 Miner's Licence

Box 32, Wilberforce, Ontario Post Office Address

do hereby report the performance of 124 days of Diamond Drilling type of work

not before reported to be applied on the following contiguous claims

| Claim No. | Days | Claim No. | Days | Claim No. | Days |
|-----------|------|-----------|------|-----------|------|
| EO 369901 | 62   |           |      |           |      |
| EO 369902 | 62   |           |      |           |      |
|           |      |           |      |           |      |
|           |      |           |      |           |      |
|           |      |           |      |           |      |
|           |      |           |      |           |      |

Cardiff Twp.

MINING RECORDER'S OFFICE RECORDED OCT 23 1975 TORONTO

All the work was performed on Mining Claim (s) EO 369901 (In the case of geological and/or geophysical survey (s) where more than 18 days were involved attach a schedule)

READ CAREFULLY: THE FOLLOWING INFORMATION IS REQUIRED BY THE MINING RECORDER.

- For Manual Work, Stripping or Opening up of Mines, Sinking Shafts or Other Actual Mining Operations - Names and addresses of the men who performed the work and the dates and hours of their employment.
- For Diamond and other Core Drilling - Footage, No. and angle of holes and diameter of core. Name and address of owner or operator of drill. Dates when drilling was done. Signed core log and sketch in duplicate.
- For Compressed Air or Other Power Driven or Mechanical Equipment Type of drill or equipment. Names and addresses of men engaged in operating equipment and the dates and hours of their employment.
- For Power Stripping - Type of equipment. Name and address of owner or operator. Amount expended. Dates on which work was done. Proof of actual cost must be submitted within 30 days of recording.
- With each of the above types of work sketches are required to show the location and extent of the work in relation to the nearest claim post. In the case of diamond or other core drilling the sketch must be submitted in duplicate.
- For Geophysical, Geological, Geochemical Surveys and Expenditure Credits - the name of author of report. Covering dates of survey (linecutting & office). Type of instrument used. Total amount of expenditure. Technical reports, maps, expenditure breakdown, receipts must be filed in duplicate with the Minister within 60 days of recording.
- For Land Survey - the name and address of Ontario Land surveyor.

The Required Information is as Follows: (Attach a list if this space is insufficient)

IEX d.d. hole 51521-0, located on EO 369901, Angle -45°N, 124 feet - 124 days  
 Work recorded as above - 124 days  
 Credits remaining - Nil

ASSESSMENT FILES OFFICE APR 23 1990 RECEIVED

Drilling dates for BH 51521-0 : September 23-29, 1975 By: Canadian Nickel Company Limited (Winkie Drill) Copper Cliff, Ontario

Date October 20, 1975 Signature of Recorded Holder or Agent W.V. Rodney

The Mining Act Certificate Verifying Report of Work

I, W.V. Rodney 5 Cobalt Street, Copper Cliff, Ontario (Post Office Address)

- hereby certify:
- That I have a personal and intimate knowledge of the facts set forth in the report of work annexed hereto, having performed the work or witnessed same during and/or after its completion.
  - That the annexed report is true.

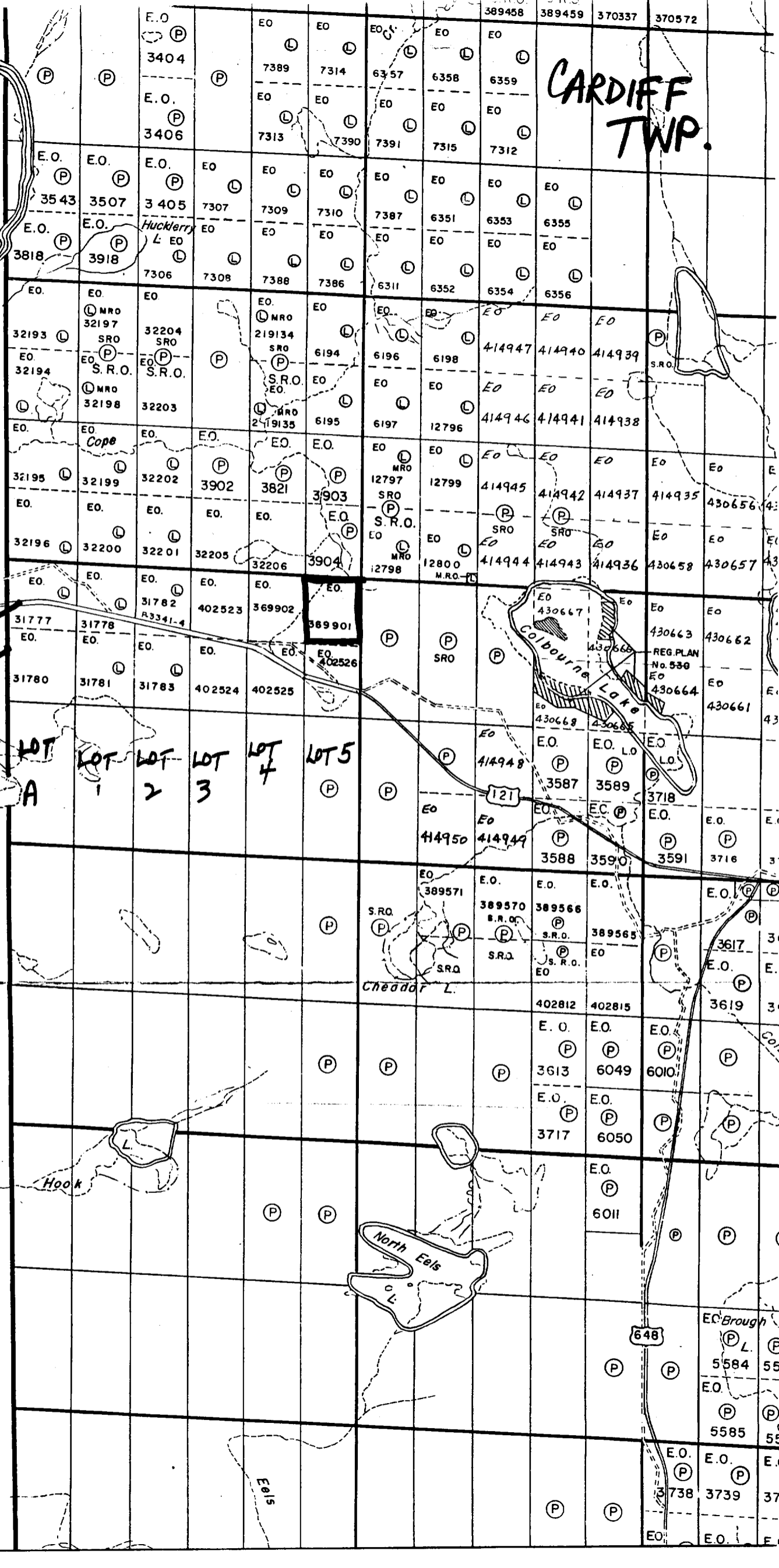
Dated October 20 19 75 Signature W.V. Rodney

THE PENALTY FOR MAKING A FALSE STATEMENT IN THIS REPORT AND/OR CERTIFICATE IS \$500. OR SIX MONTHS IMPRISONMENT OR BOTH

Monmouth Twp. M.164

CON  
XIV

CARDIFF  
TWP.



LOT A  
LOT 1  
LOT 2  
LOT 3  
LOT 4  
LOT 5

Hook

North Eels

Colbourne Lake

Cheador L.

648

Brough

Eels